

1/2 p! PAYS SINGLE RATE
NICOSIA
TO
G. R. RURAL SERVICE (TYPE 28)
STAVROKONO

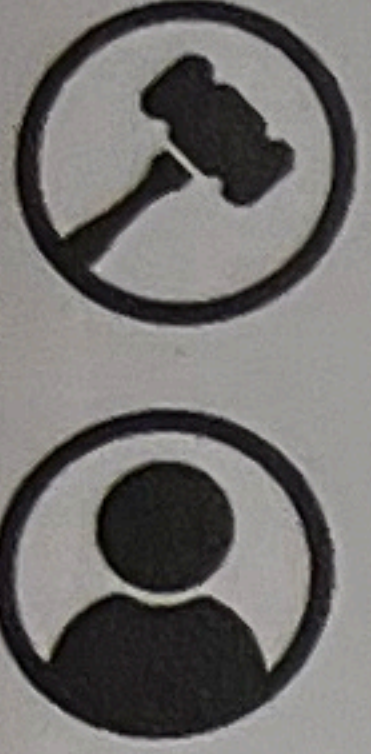
CANCEL



g. de choli
Kon Paraskevi 680: 98me



David Feldman
INTERNATIONAL



BASSETT'S FAMOUS
LIQUORICE ALLSORTS
SWEETS



REGD TRADE MARK

Sole Agent and Importer:
CHAS. S. KTORIDES
Eleftheria Street No. 8 - P. O. Box 578
NICOSIA - CYPRUS.



The Bank of Cyprus Ltd

Nicosia

PRINTED MATTER

03

1-02

3-13

RED CROSS ACTIVITIES

3-15

3-16

4-01

ΕΤΑΙ ΤΟ
Ε ΤΗΝ Χ
ΕΔΟΝ ΚΑΙ Τ
ΕΥΘΥΝΕΙ Τ
ΤΗΝ ΟΠΟΙΑ
ΕΙΣ ΤΗΝ Δ
ΟΙΝ» (Ι
ΤΟ ΔΕΙΟΤ
ΦΩΝΕΥ



PRINTED MATTER INLAND

PRINTED MATTER RATE - INLAND
 Effective as of: Per 4 oz. Per 2 oz.
 12th May, 1938 .5 Piastre
 1st January, 1941 .5 Piastre

GREETING CARD

FAMAGUSTA
 1 NOV 40 (TYPE 19) TO
KYRENIA
 1/2 pi PAYS SINGLE RATE

MOURNING COVER

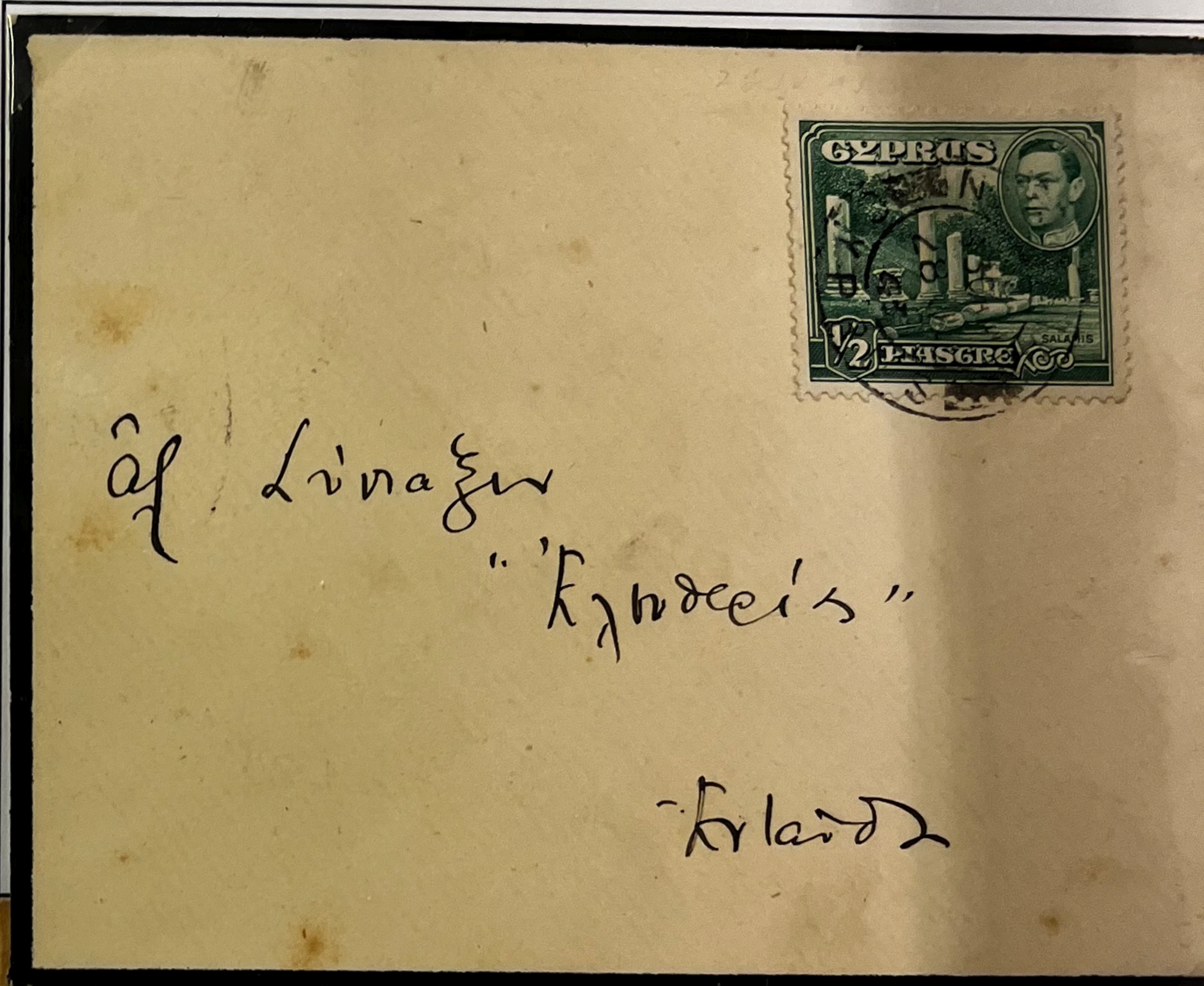
EARLY USE OF
 TYPE 19B CANCEL

NICOSIA

28 JU 43
 (TYPE 19B) TO

NICOSIA

1/2 pi PAYS SINGLE RATE



GREETING CARD
 RURAL SERVICE
 CANCEL

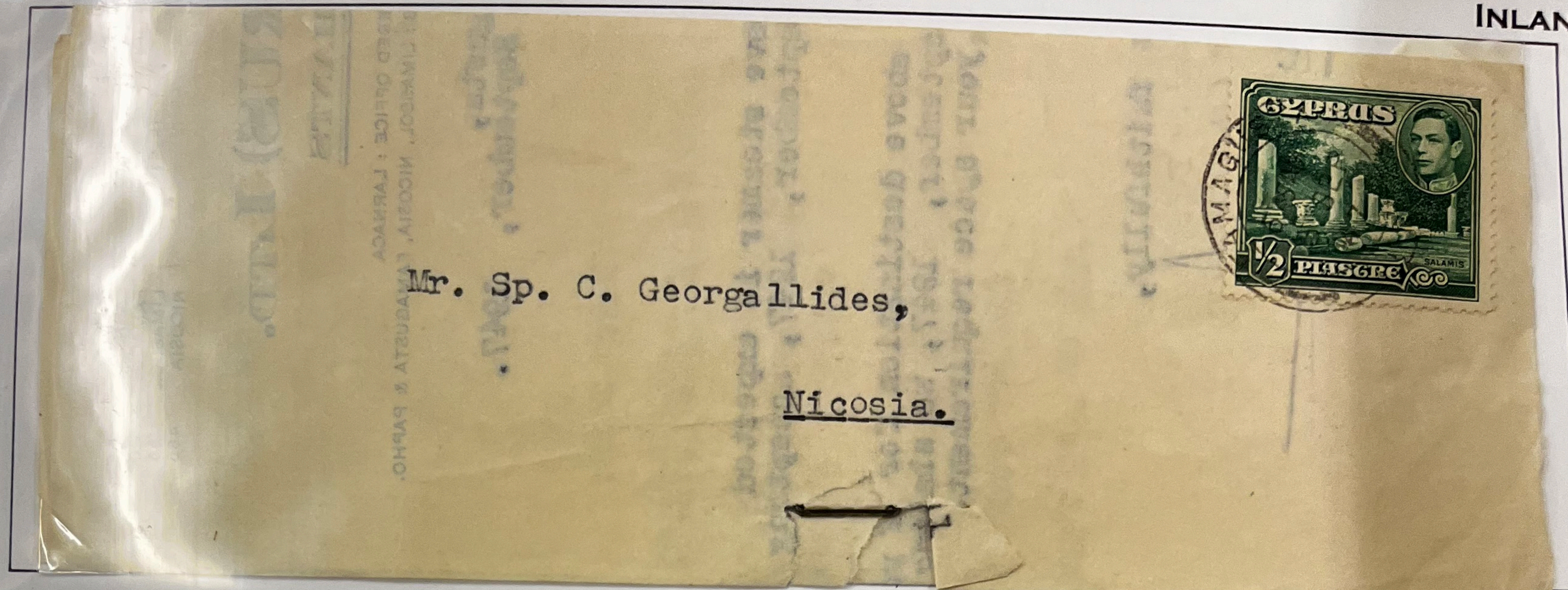
STAVROKONO

G. R. RURAL SERVICE (TYPE 2)
 TO
NICOSIA

1/2 pi PAYS SINGLE RATE

NOTE
 PAPHOS 24 AU 45
 (TYPE 5) TRANSIT
 AND
 NICOSIA 25 AU 45
 (TYPE 5) RECEIVER
 ON REVERSE





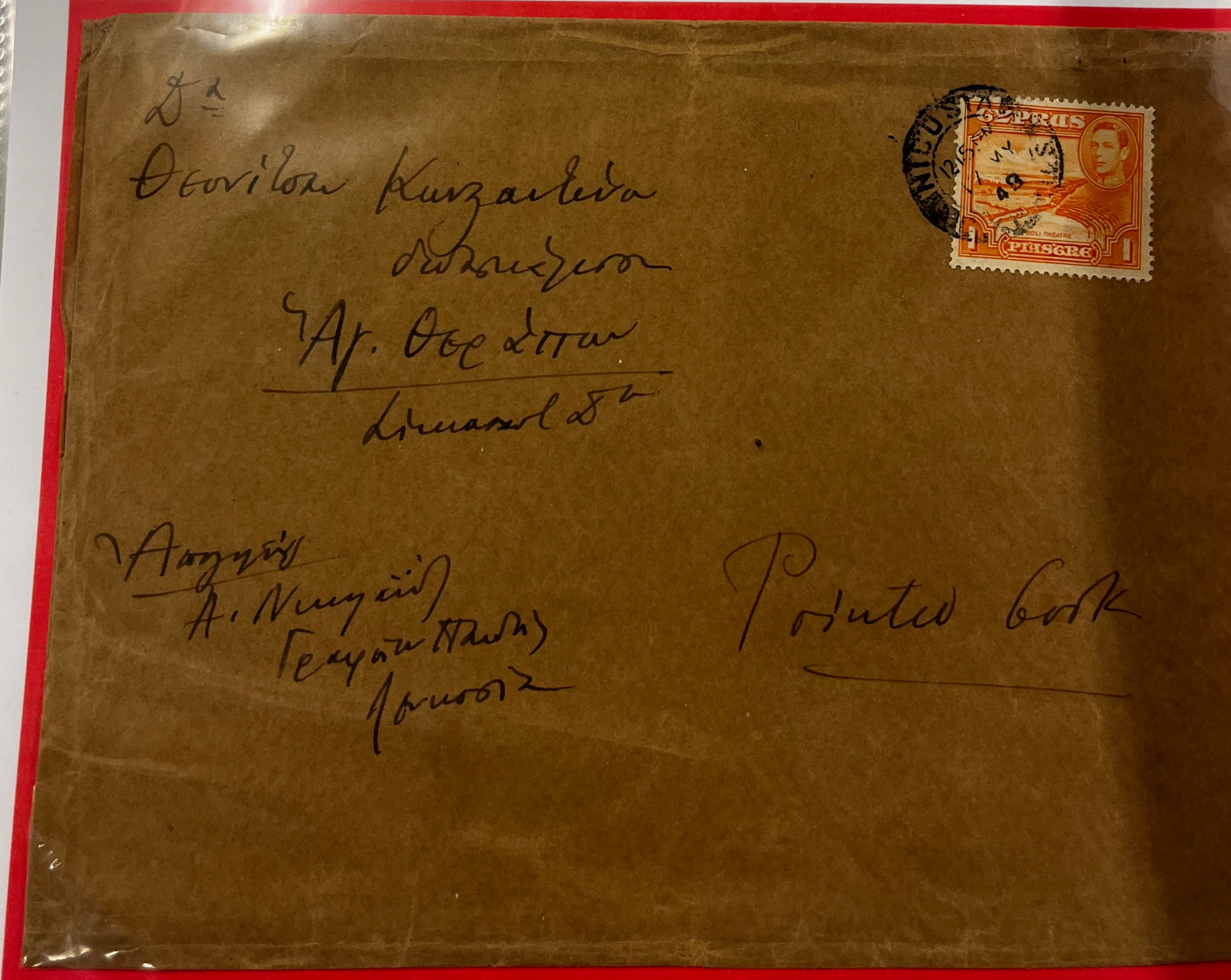
Mr. Sp. C. Georgallides,

Nicosia.

FAMAGUSTA 5 SP 47 (TYPE 19) TO NICOSIA 1/2 pi PAYS SINGLE RATE—BACK-STAMPED NICOSIA 5 SP 47 (TYPE 5)

BOOK WRAPPER

NICOSIA 17 MY 48 (TYPE 19B) TO LIMASSOL 1 pi PAYS DOUBLE RATE



Αγαπών
Οδοντολόγος Κωνσταντίνος
Παπαδόπουλος
Αρ. Οδοντολόγου
Ποσειδών 56

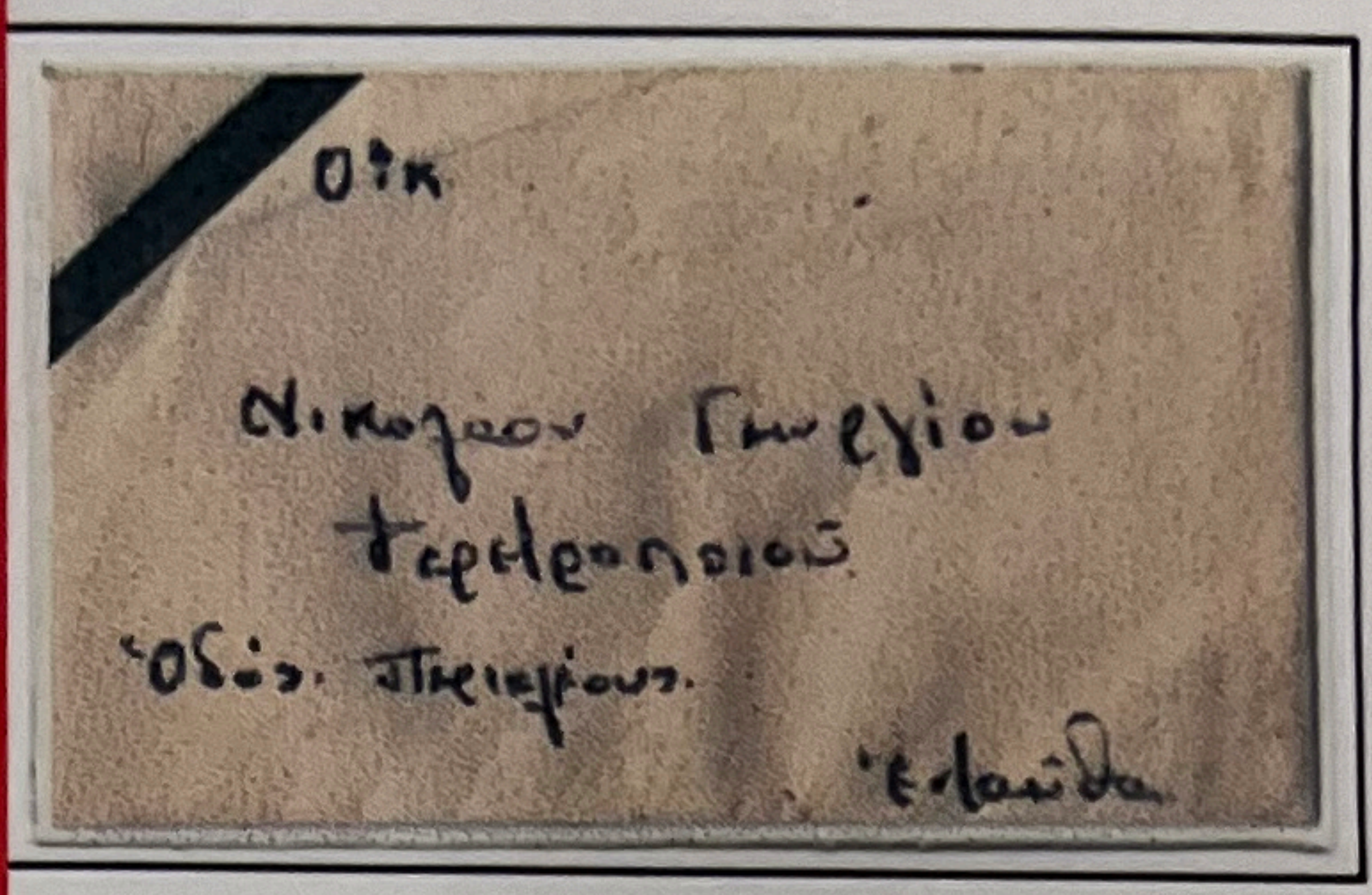
Αγαπών
Α. Νικησίου
Γεωργίου Παπαδόπουλου
Ποσειδών

Ποσειδών



MOURNING COVER

PRINTED MATTER
INLAND

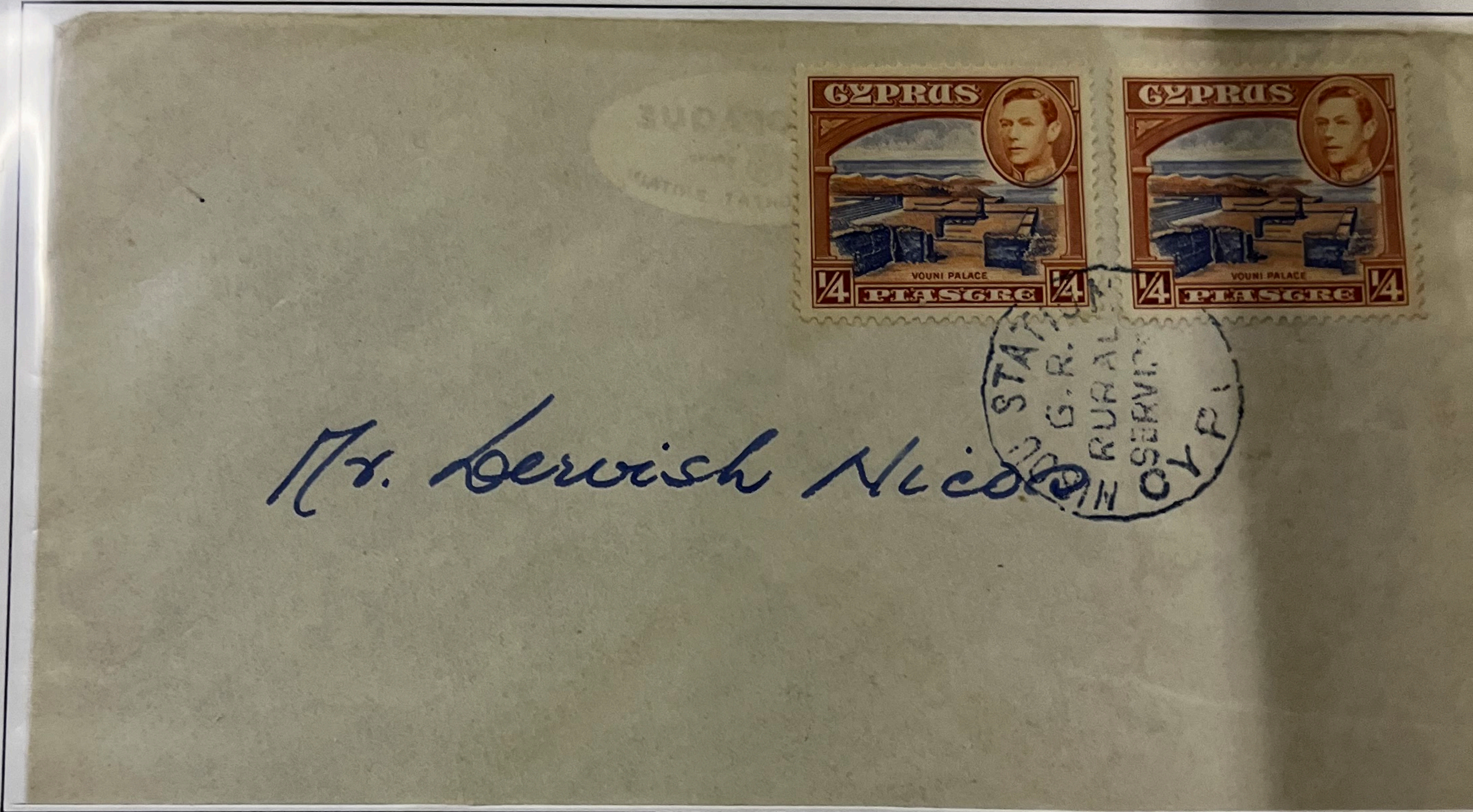


NICOSIA
20 OC 48 (TYPE 5) TO
NICOSIA ADDRESS
1/2 pi PAYS SINGLE RATE
VERY SCARCE EXAMPLE IN
THIS STYLE AND SIZE

GREETING
CARD

NISOU
STATION
G. R.
RURAL
SERVICES
(TYPE 28)
TO
NICOSIA
ADDRESS

2 X 1/4 pi PAY
SINGLE RATE

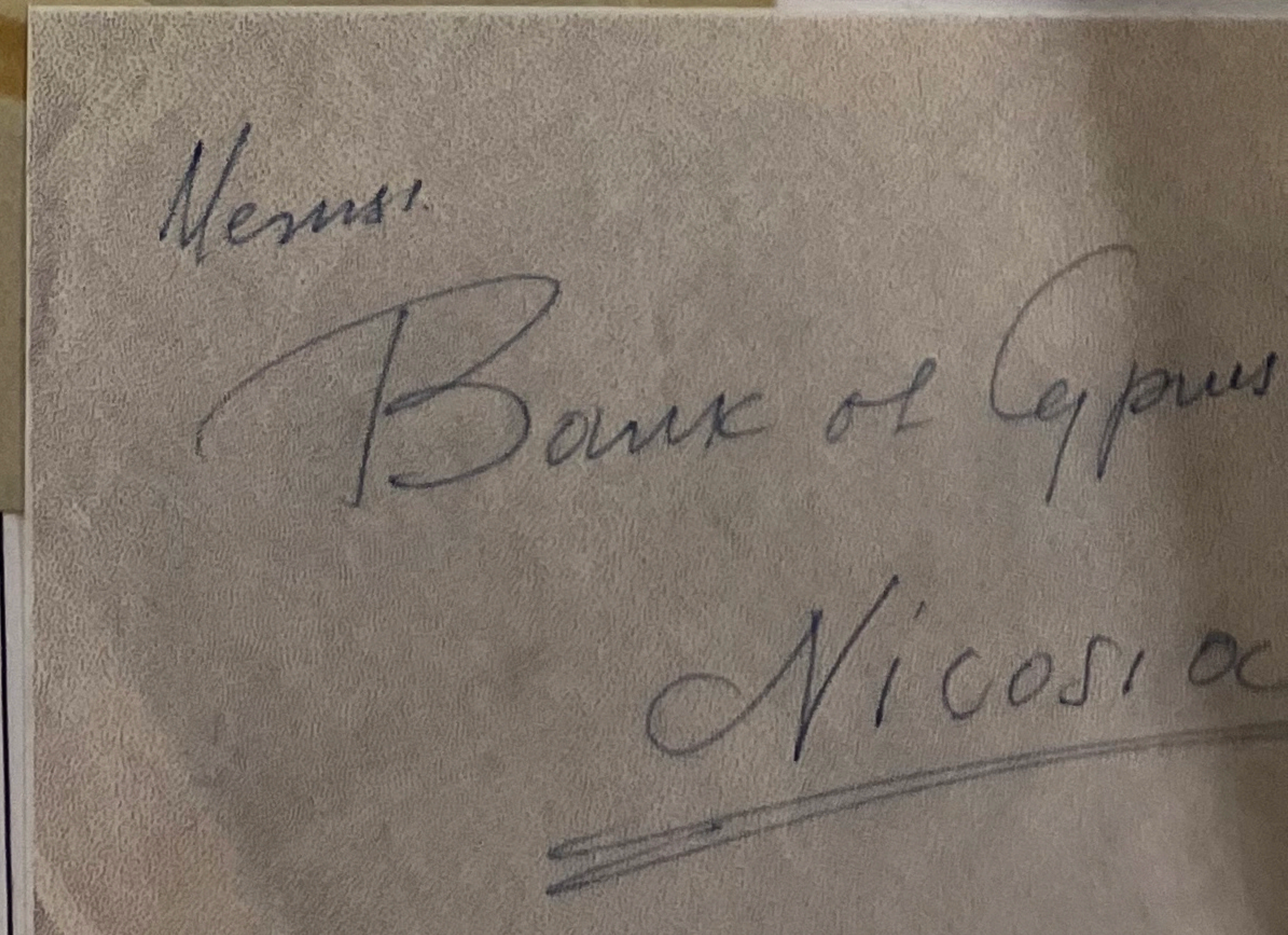


Mr. Berish Nicosia



UNSEALED
COMMERCIAL
MAIL

LIMASSOL 3 JUL 51 (TYPE 19B) TO NICOSIA
1/2 pi PAYS SINGLE RATE
NOTE NICOSIA 4 JY 51 (TYPE 5) RECEIVER



STAPLES

CALLING CARD COVER

PRINTED MATTER
INLAND

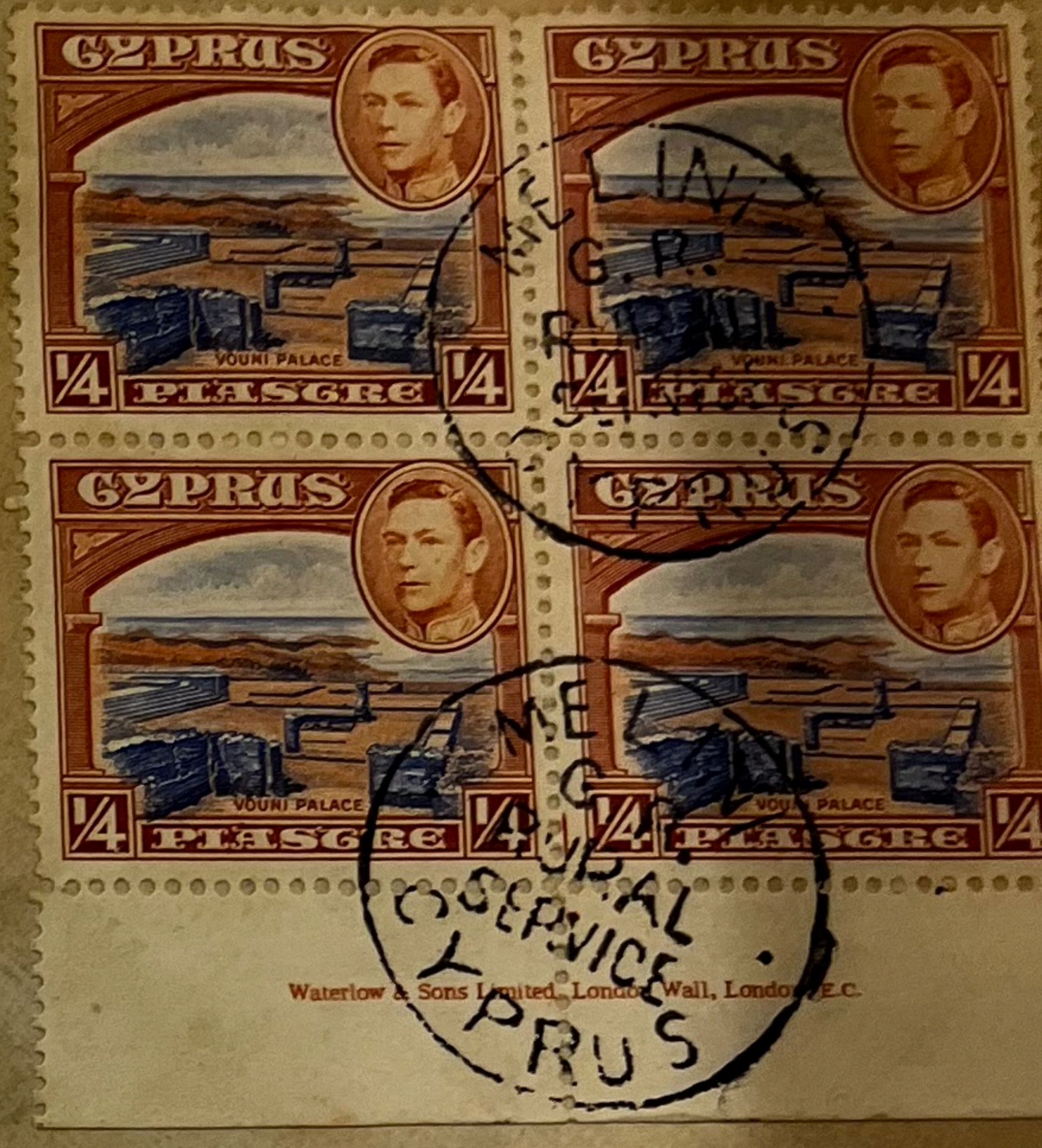


*Αφιέρωμα
οι υποψήφιοι
α. Δουκιάδη Γεωργιάδη
Γραφείο Συγκοινωνίας
ως Φλάγον.*

POLIS
24 DE 53 (TYPE 19) TO
NICOSIA ADDRESS
1/2 pi PAYS SINGLE RATE
SCARCE EXAMPLE

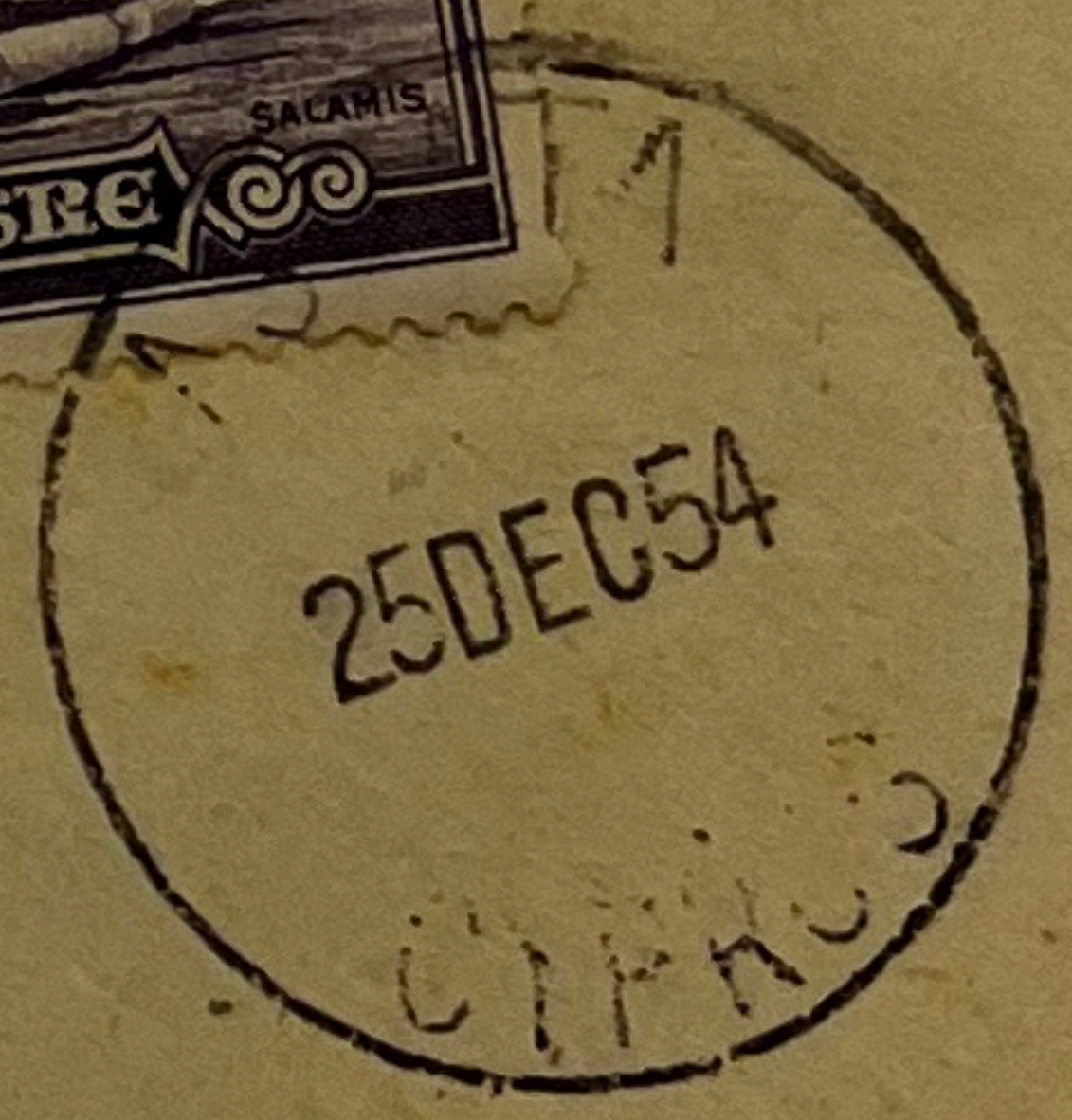
DOUBLE WEIGHT
UNSEALED
COMMERCIAL
MAIL

MELINI
G. R. RURAL SERVICE (TYPE
28) TO
FAMAGUSTA
BLOCK OF 4 x 1/4 pi PAYS
DOUBLE RATE
NOTE FAMAGUSTA
15 NO 53 (TYPE 5)
RECEIVER ON REVERSE



Waterlow & Sons Limited, London, Wall, London, E.C.

022



Ανδρεία Γ. Λιαχχέζου.

Ὁδὸς Βασιλείου Λιαχχέζου Ν° 24.

Λεμεσό.

I. K. HATJIDIMITRIO
P.O.B. 88
FAMAGUSTA - CYPRUS

CHRISTMAS D
CANCEL

AGATA
25 DEC 54 (TYPE
NICOSIA

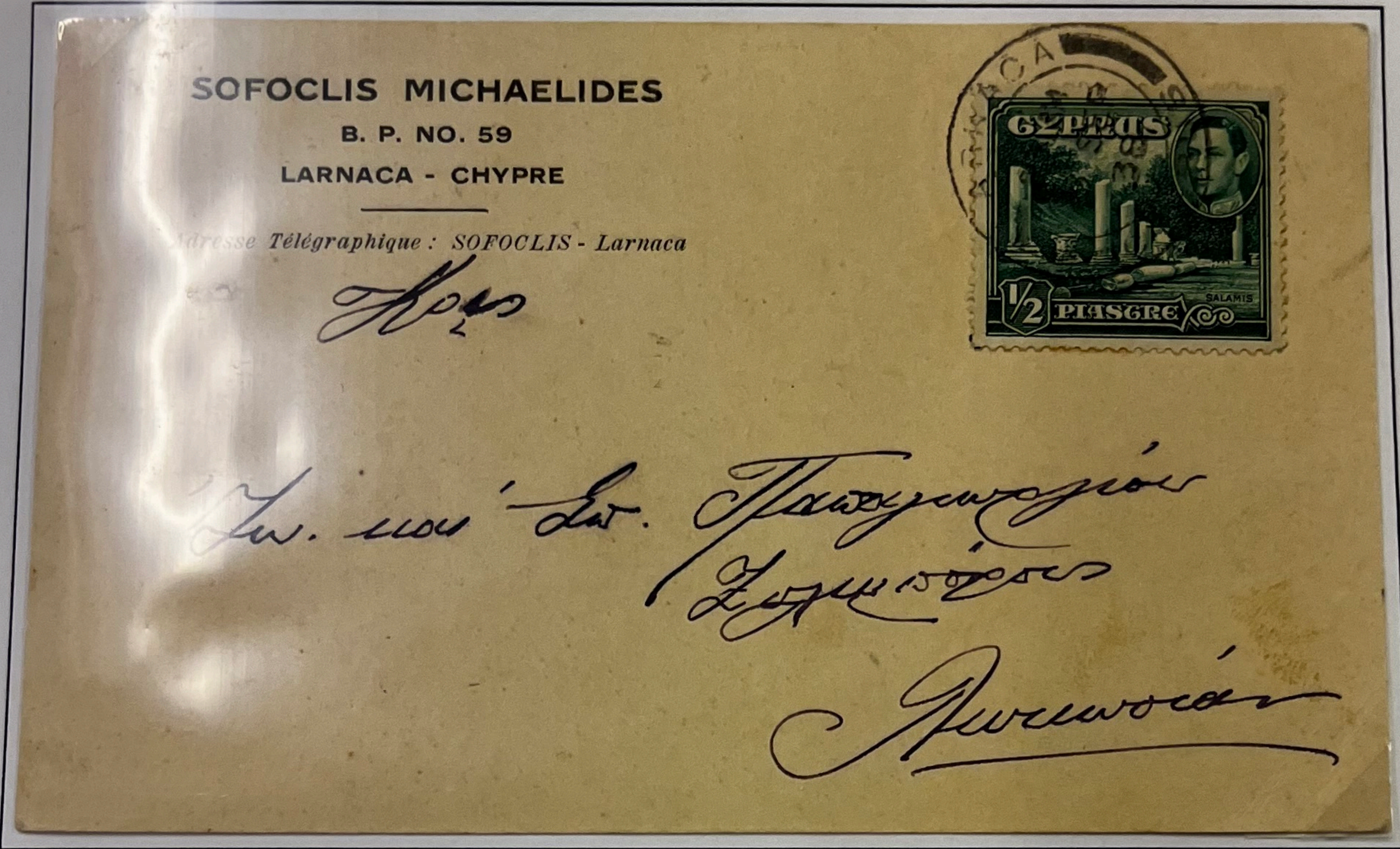
1/2 pi PAYS
SINGLE RATE

STAPLES®

POST CARD RATE - INLAND

Effective as of:
12th May, 1938 .5 Piastre

POST CARD INLAND



LARNACA

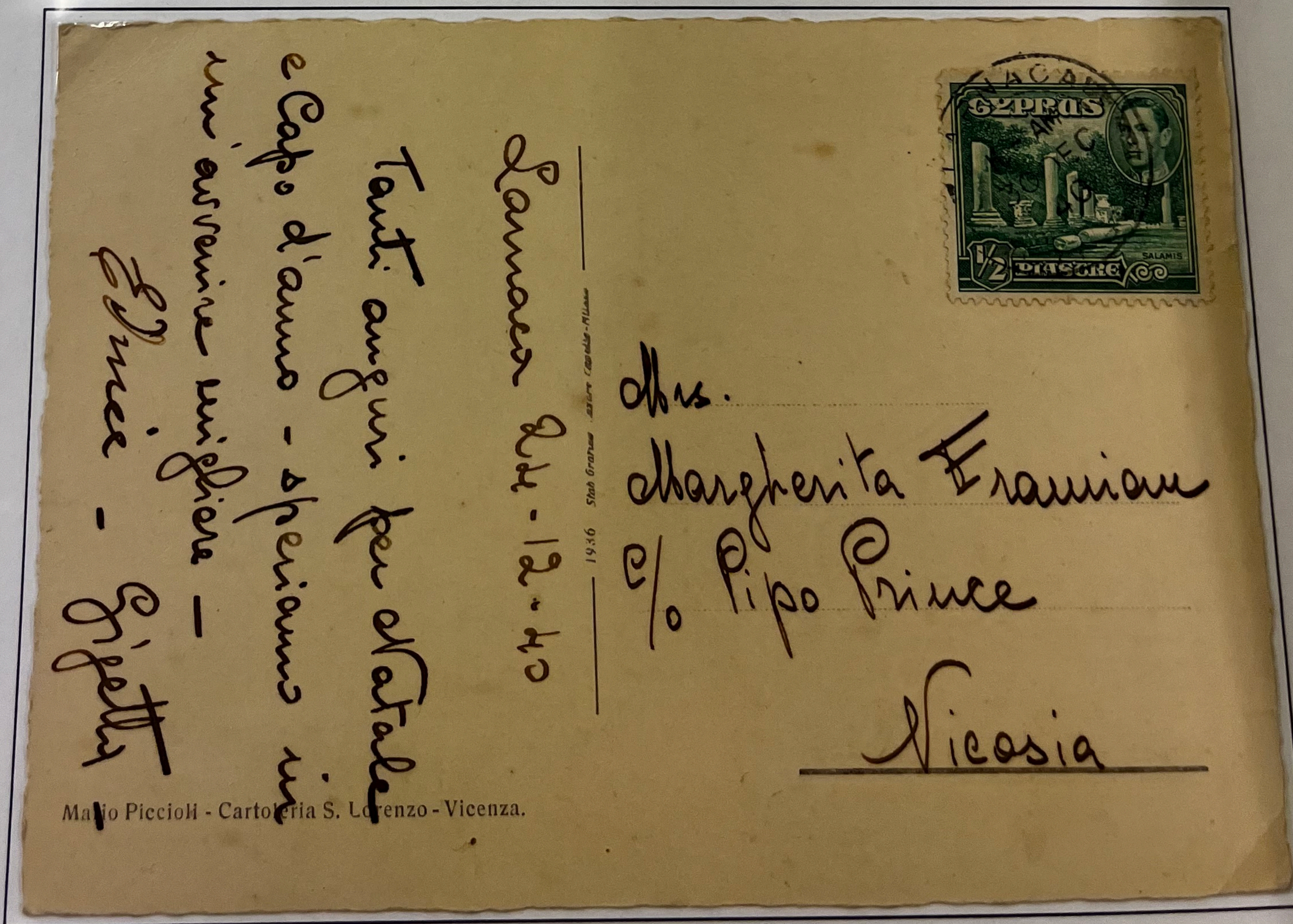
8 SEP 38 (TYPE 19) TO

NICOSIA

1/2 pi PAYS LOCAL
POST CARD RATE.

NOTE THE CROSSED
GUIDE LINES AT THE
LOWER LEFT OF THE
STAMP.

ITALIAN PICTURE POST CARD USED IN CYPRUS



LARNACA 30 DEC 40 (TYPE 19) TO NICOSIA

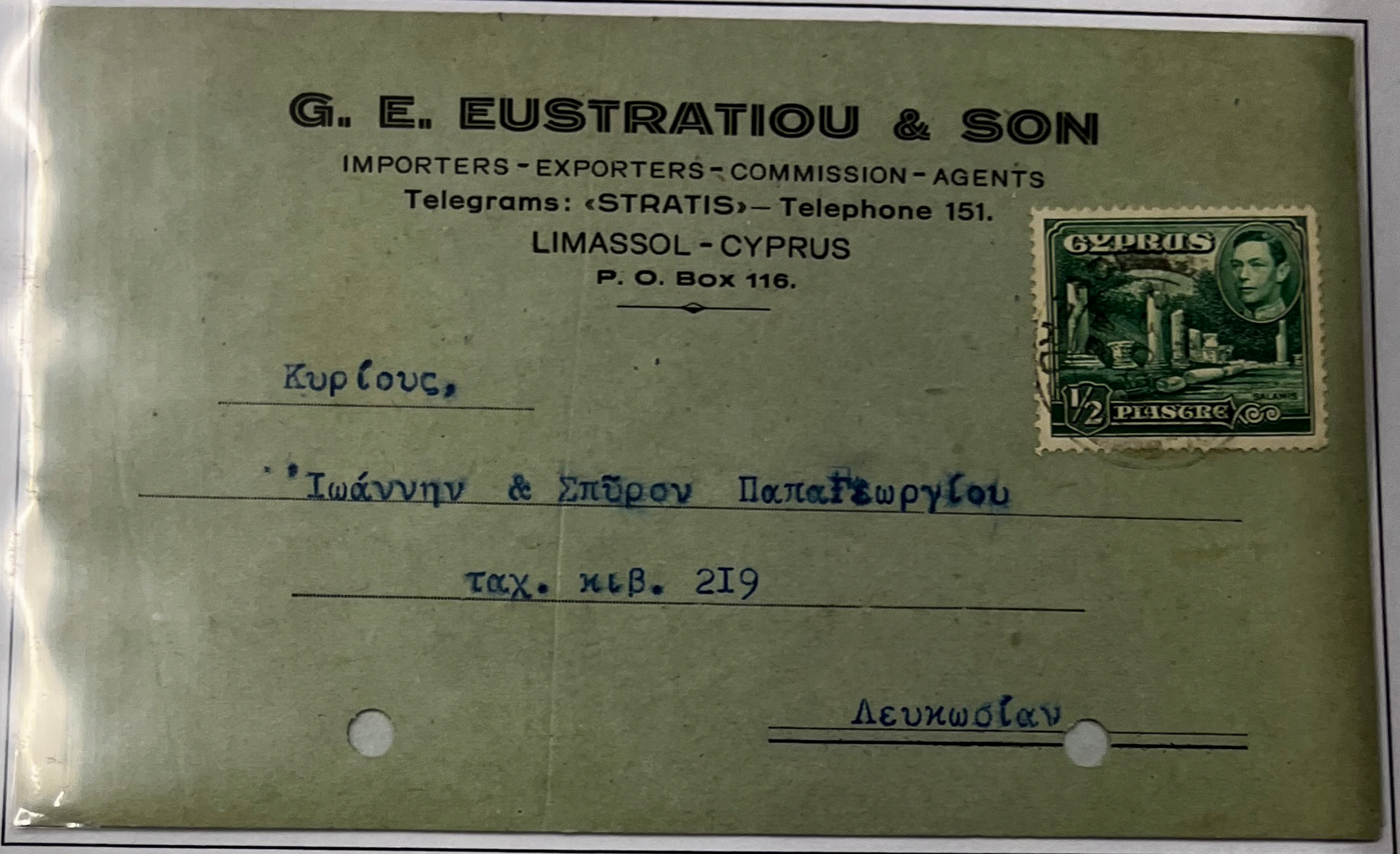
1/2 pi PAYS LOCAL POST CARD RATE.

APPARENTLY WRITTEN 6 DAYS BEFORE BEING MAILED

STAPLES

BUSINESS CORRESPONDENCE

POST CARD LOCAL

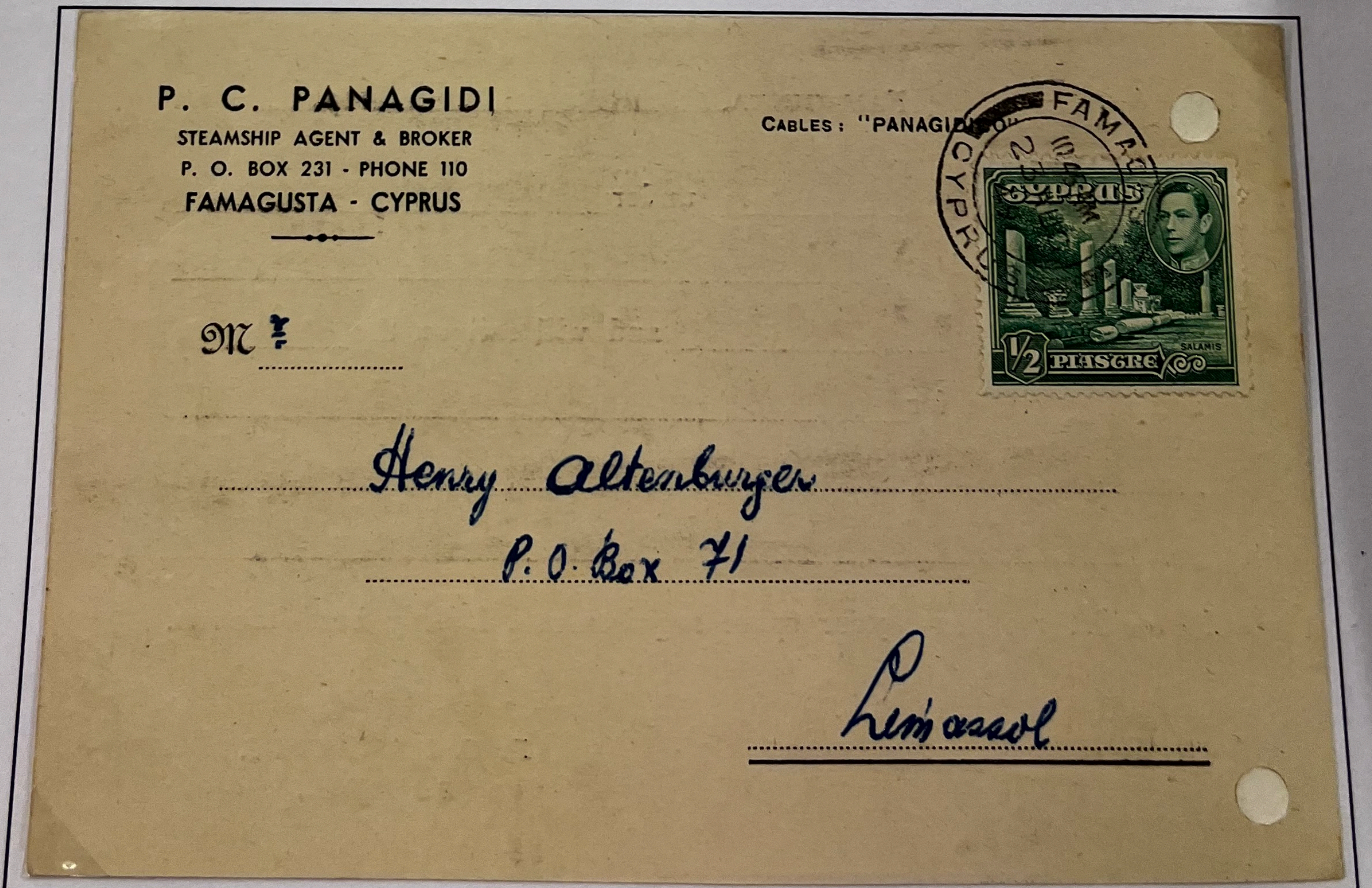


LIMASSOL 23 OC 46 (TYPE 19) TO NICOSIA

1/2 pi PAYS THE LOCAL POST CARD RATE.

NOTE THE STAMP'S LIGHTER SHADE IN THE LATER PRINTING.

SHIPPING AGENT INFORMATION RE SHIP'S ARRIVAL



FAMAGUSTA 23 AUG 49 (TYPE 19) TO LIMASSOL

1/2 pi PAYS THE LOCAL POST CARD RATE.

STEAMSHIP AGENT ADVISING OF THE EXPECTED ARRIVAL OF THE S/S TOKAR

STAPLES

FIRST CLASS RATE - INLAND
 Effective as of: First oz. Add'l oz.
 12th May, 1938 1 Piastre .5 Piastre
 17th July, 1944 1.5 Piastres 1 Piastre

**SURFACE MAIL
 INLAND**

FIRST DAY
 COVER

LIMASSOL

12 MAY 38
 (TYPE 19)
 TO

LIMASSOL

¼ pi + ½ pi PAY
 THE SINGLE RATE



FIRST DAY COVER.
 CYPRUS K. G. VI.

S. P. STAVRINIDES
 P. O. BOX 140.
 LIMASSOL / CYPRUS.

FORWARDED MAIL MILITARY RATE



Mr.

Mohd Muntaz Hussain

No 11 (Gen) M.

~~L.D. Clerk~~

W/Sheriff Coy

~~A.D.O.S. (R) Office~~

I.A.O.C.

~~Middle East Force.~~

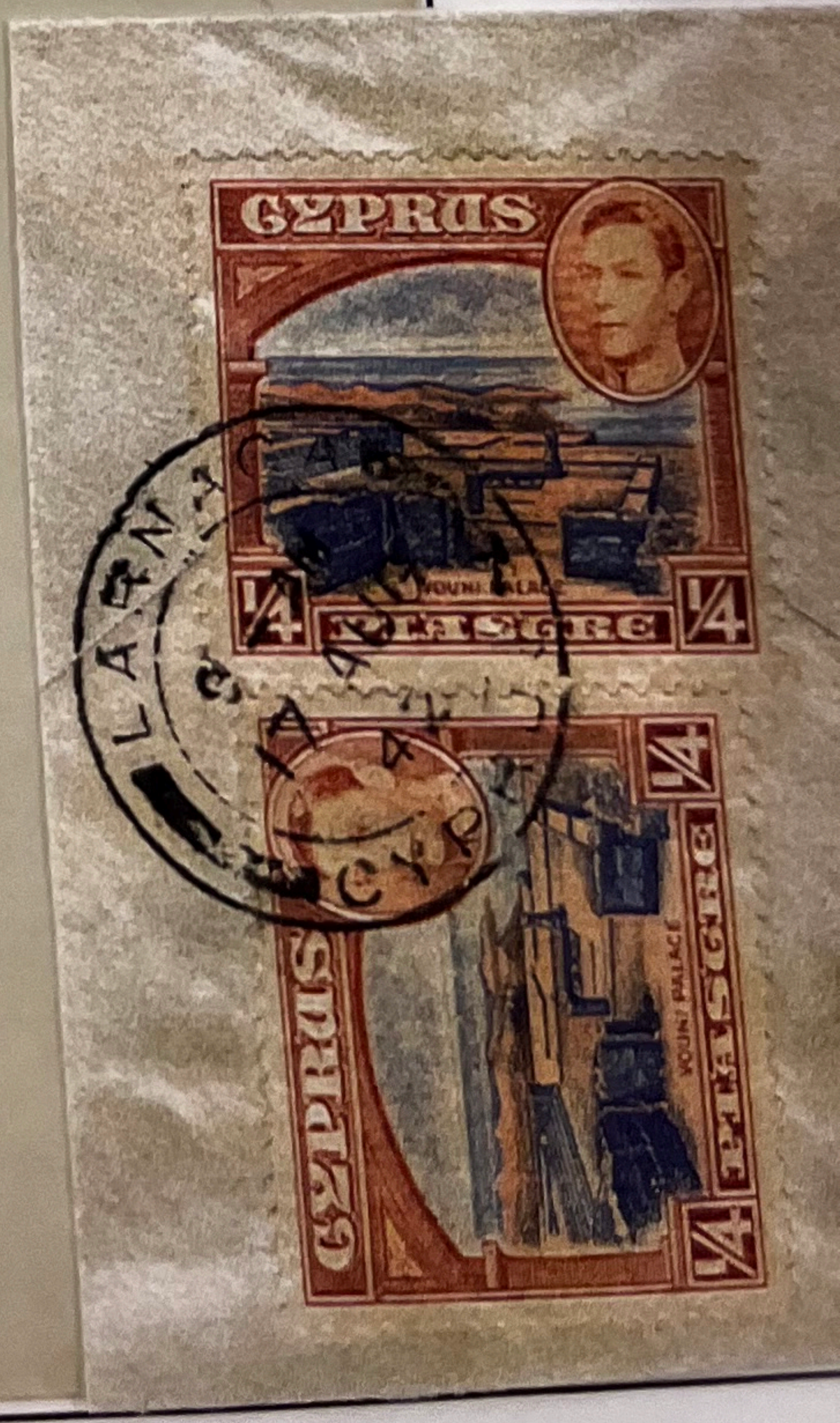
LARNACA

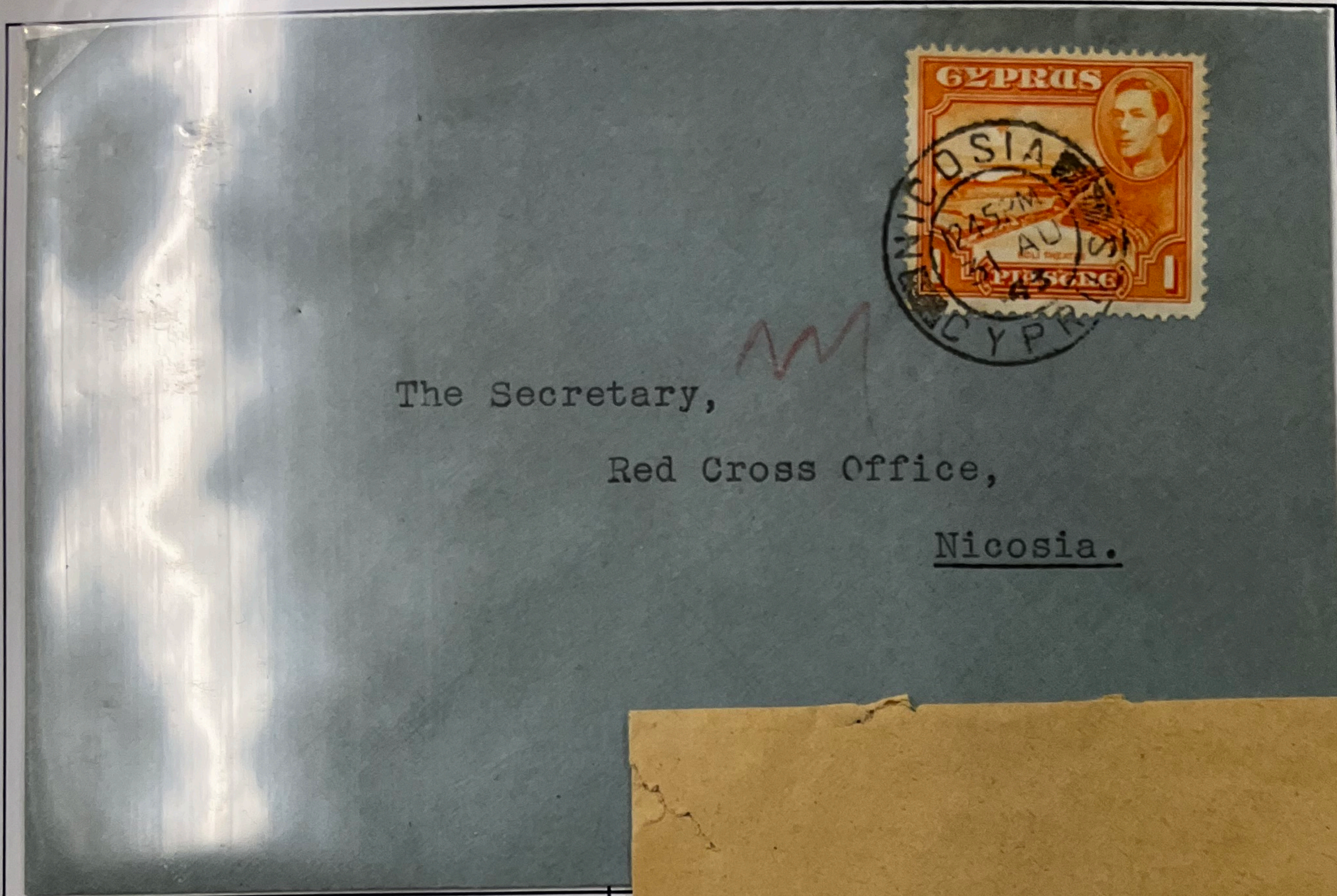
17 AU 42 (TYPE 19)

**MIDDLE EAST
 FORCE**

4 x ¼ pi (2 ON 1)
 PAY THE SPECIAL
 RATE.

**MILITARY MAIL
 WAS DEEMED
 LOCAL RATE**





The Secretary,
Red Cross Office,
Nicosia.

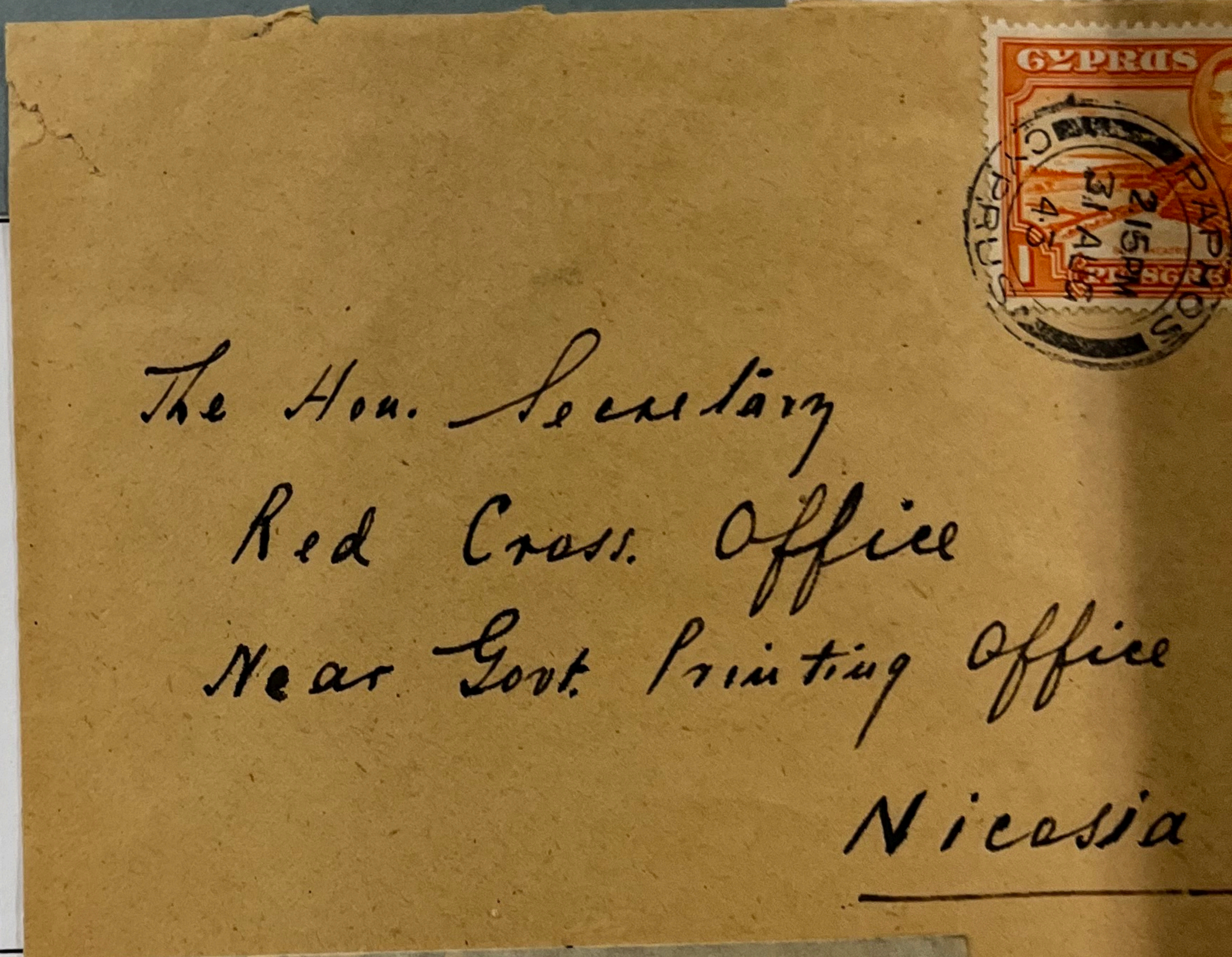
DURING WORLD WAR II THE
WAS CONSIDERABLE ACTIVITY
THE PART OF THE RED CROSS
SOCIETY IN CYPRUS. THE
MAINTAINED AN OFFICE IN
NICOSIA, AND A GREAT DEAL
MAIL WAS RECEIVED AT THIS
LOCATION. EXAMPLES ARE
FOUND ON THIS PAGE

NICOSIA

31 AU 43 (TYPE 19B) T

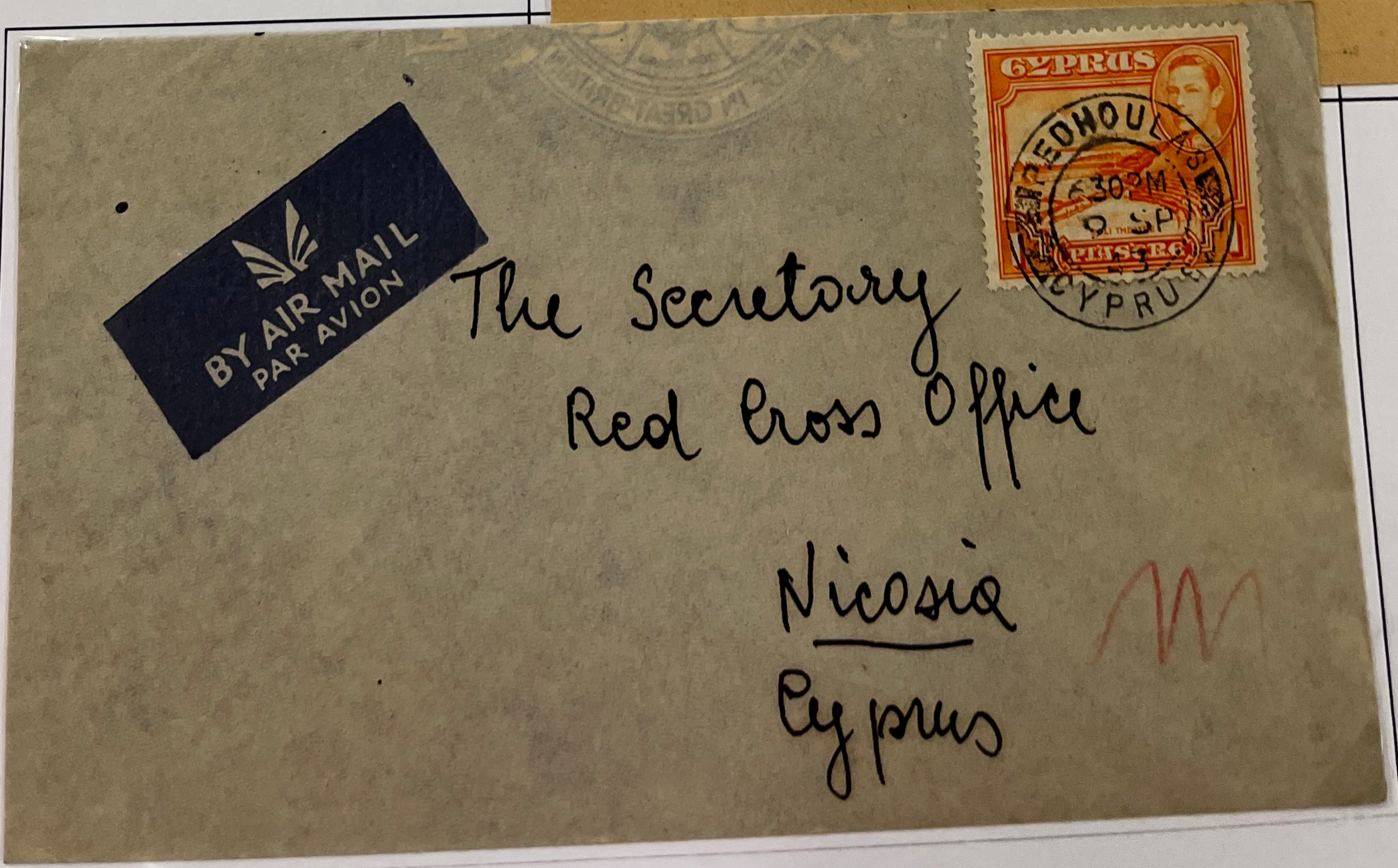
NICOSIA

1 pi PAYS SINGLE RATE



The Hon. Secretary
Red Cross Office
Near Govt. Printing Office
Nicosia

PAPHOS
31 AUG 43 (TYPE 19) TO
NICOSIA
1 pi PAYS SINGLE RATE
THE REVERSE SHOWS A
NICOSIA 1 SP 43
(TYPE 5)



The Secretary
Red Cross Office
Nicosia
Cyprus

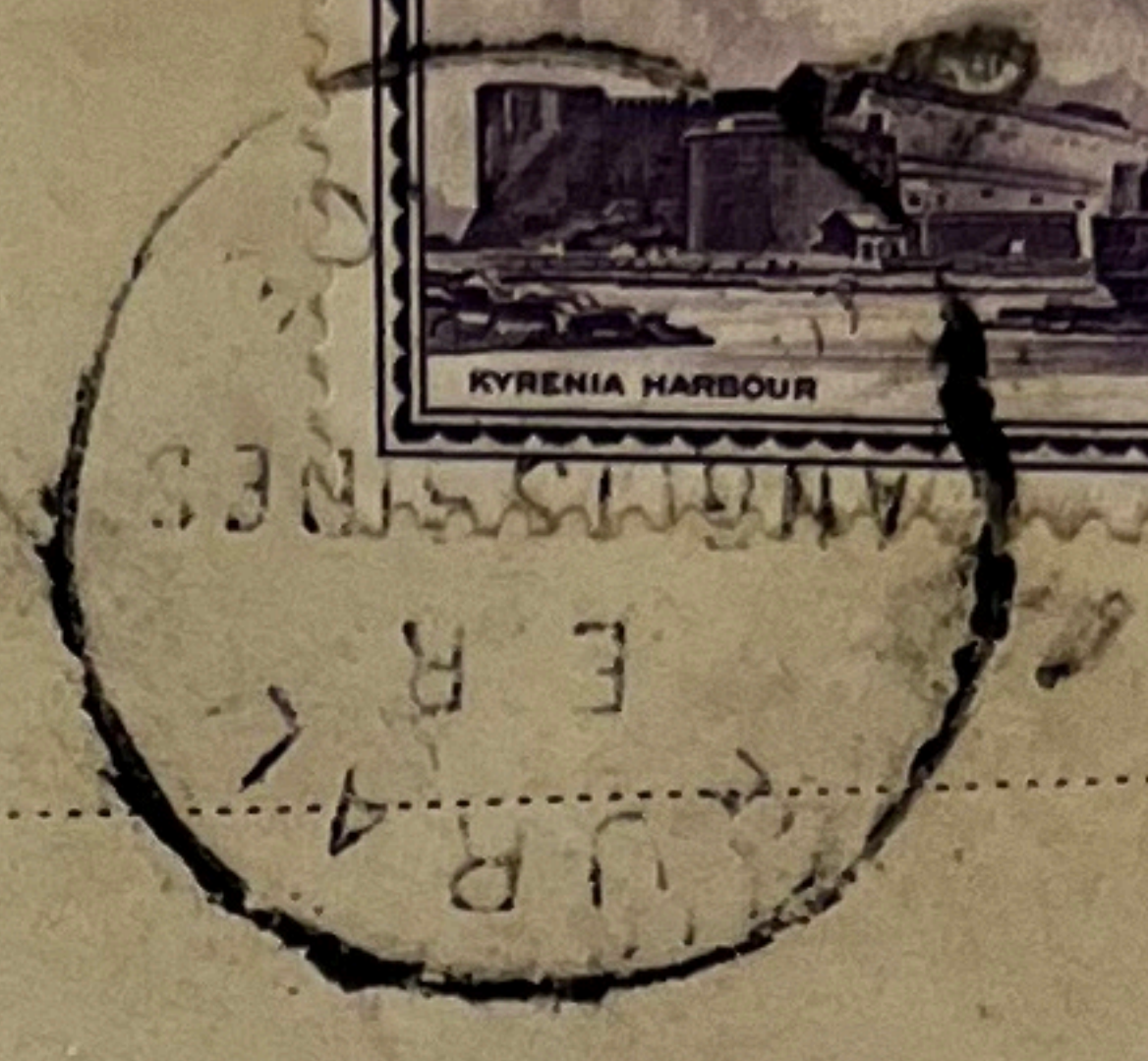
PED
9 SEP 43
N
1 pi PAYS
THE RE
NIC
C.I.
THE A
HAS M
IN T

STAPLES

NEW RATE - RURAL SERVICE CANCELS

SURFACE MAIL
INLAND

ANGLISIDHES CO-OPERATIVE CREDIT SOCIETY
ΣΥΝΕΡΓΑΤΙΚΗ ΠΙΣΤΩΤ. ΕΤΑΙΡΕΙΑ ΑΓΓΛΙΣΙΔΩΝ



Αγγλισιδες Ηπειρωτες

Ταχυδ. Συνεργατικης Ταχυδ.

Νικωσια

BASIC RATE
RISES TO 1½ pi

E.R.
ANGLISIDHES
RURAL SERVICE
(TYPE 23)
TO
NICOSIA

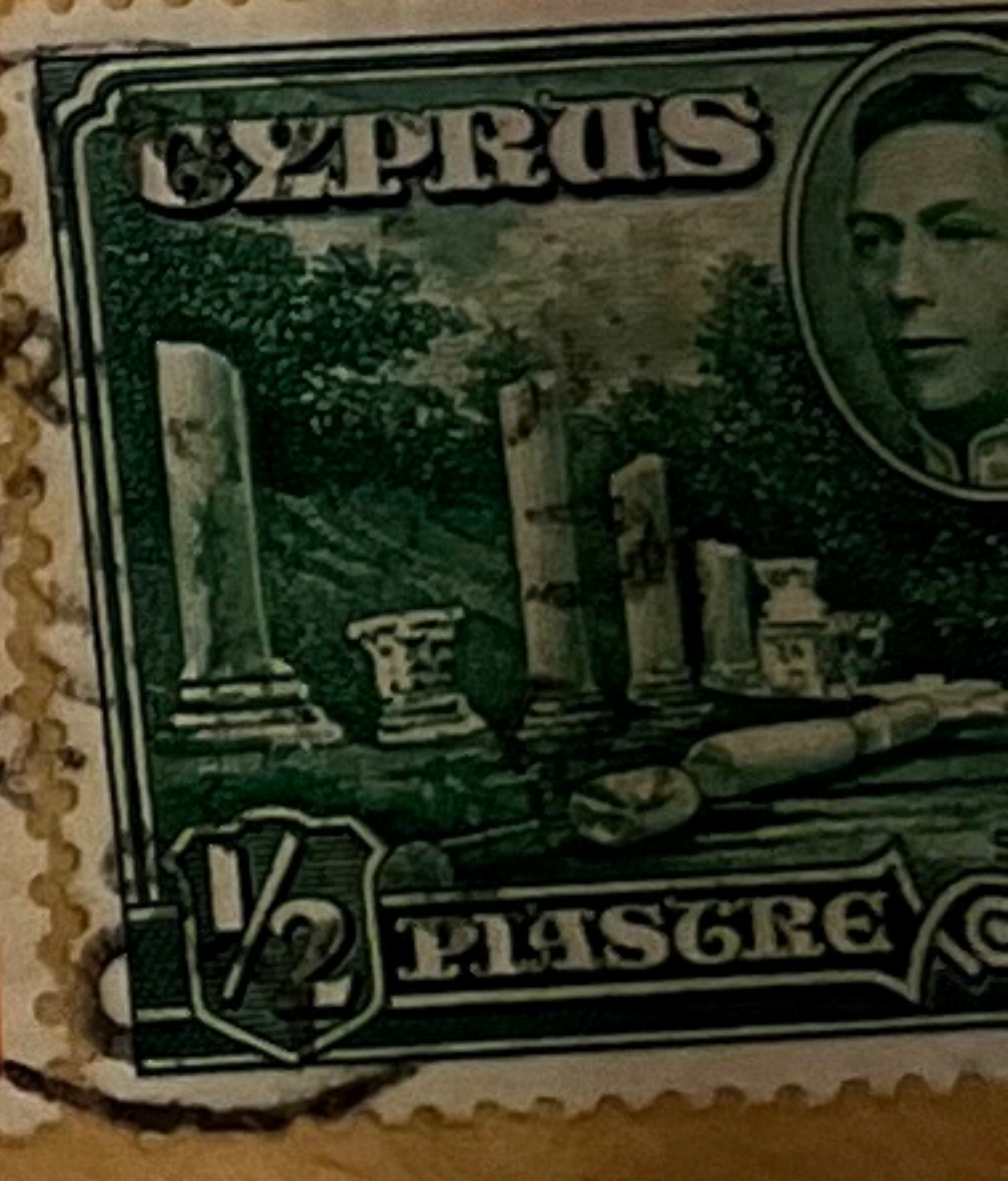
1½ pi PAYS
SINGLE RATE

NOTE THE PRE-
PRINTED
CO-OPERATIVE
CREDIT SOCIETY
ENVELOPE - THE
SOURCE OF MANY
RURAL CANCELS

G.R.
TRIMIKLINI
RURAL SERVICE
(TYPE 28)
TO
NICOSIA

½ pi + 1 pi PAY
SINGLE RATE

BACK-STAMPED
LIMASSOL (AM)
TRANSIT MARK
AND
NICOSIA (PM)
RECEIVER MARK
BOTH
5 JU 45



Κέρσιον

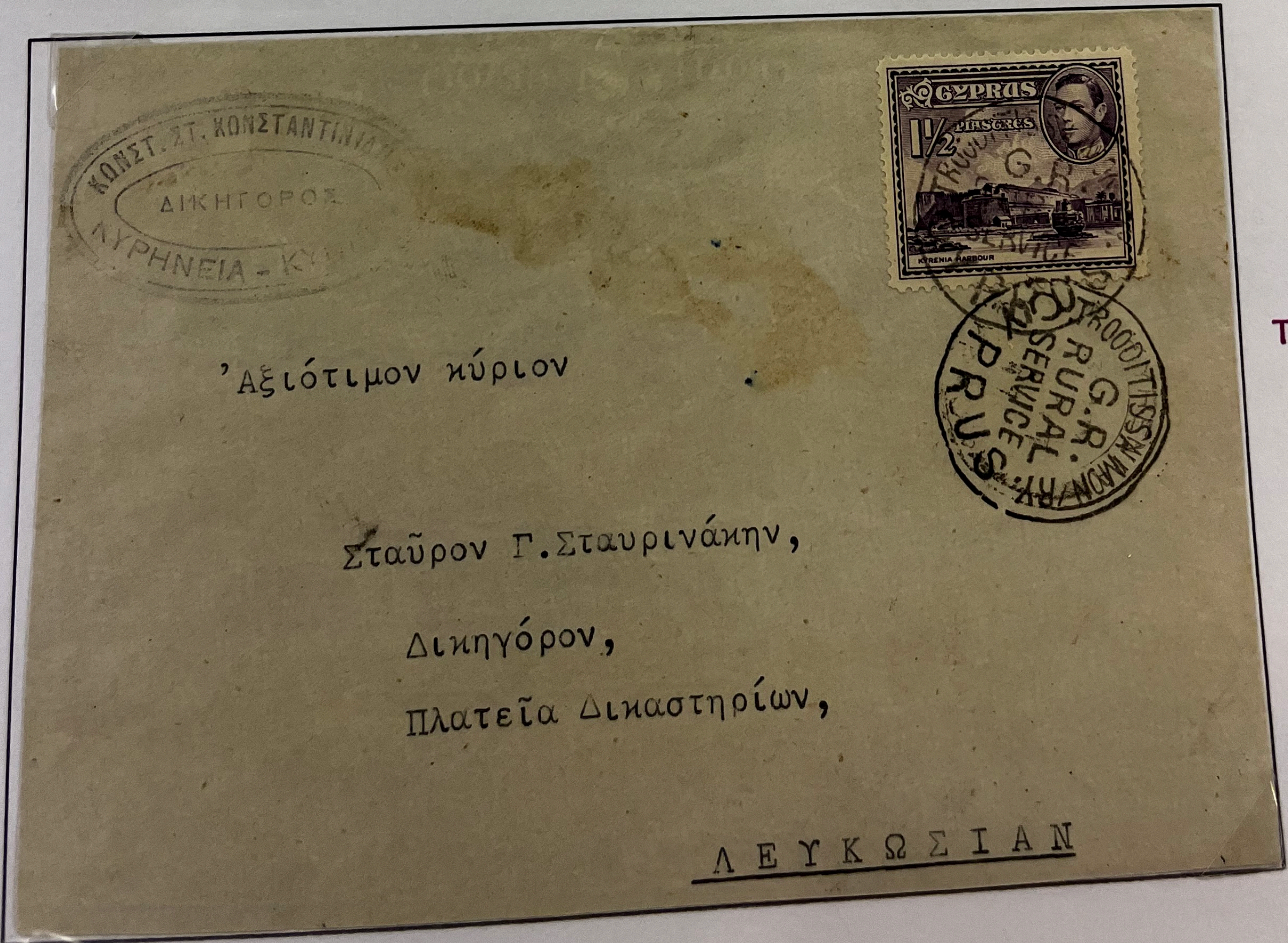
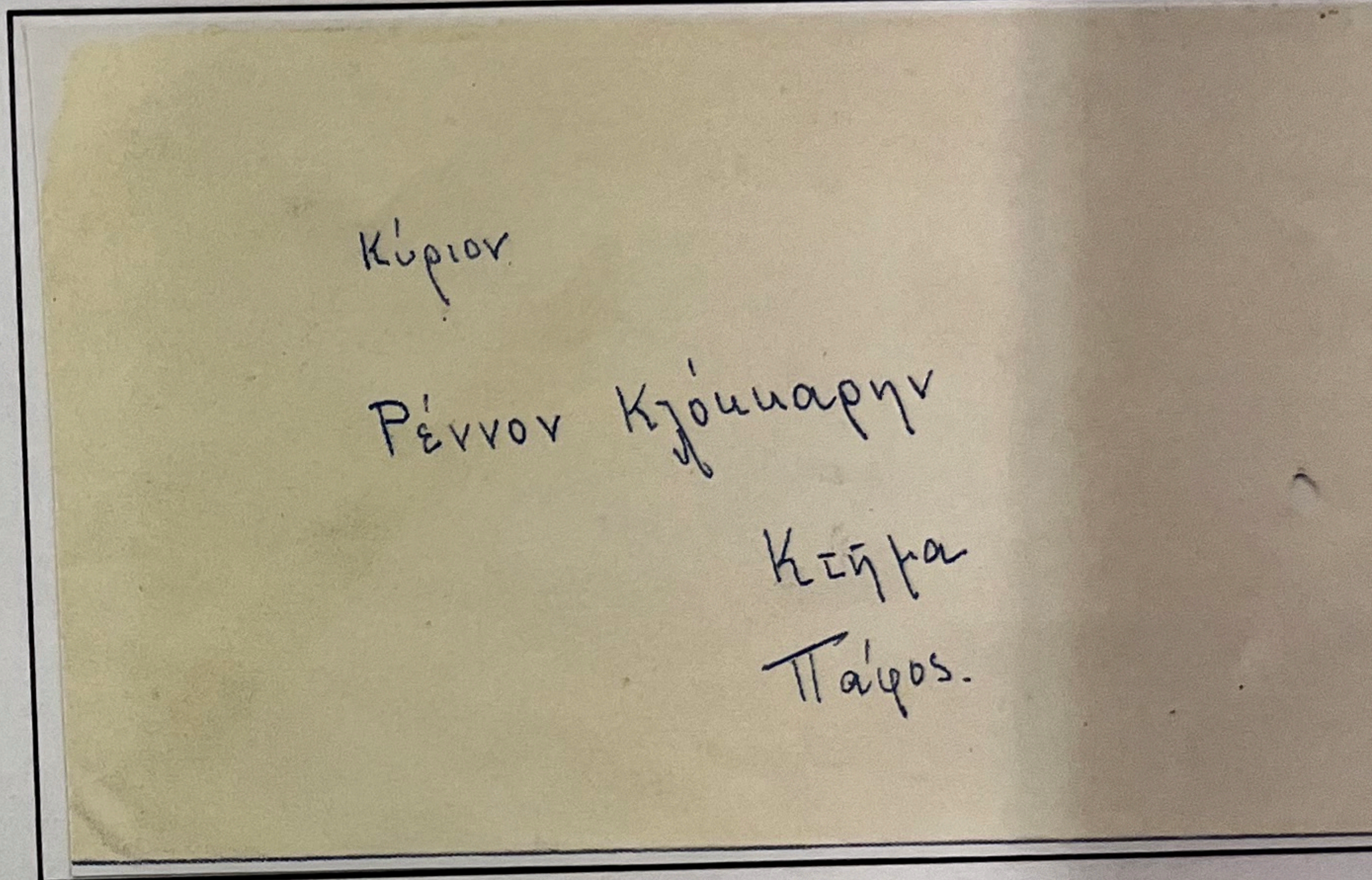
Χριστοδουλος Γ. Δεματρης

C. J. D.

Nicosia



NICOSIA 23 FE 46 (TYPE 19A) TO PAPHOS
 UPPER LEFT CORNER VERTICAL STRIP OF 3 x 1/2 pi
 PAYS THE SINGLE RATE
 ALSO, PAPHOS 25 SEP 46 (TYPE 5) RECEIVER MARK



RURAL SERVICE
TROODITISSA MO
 G. R. RURAL SERV
 (TYPE 28) TO
 NICOSIA
 1/2 pi PAYS
 THE SINGLE RA

Αξιότιμον κύριον
 Σταῦρον Γ. Σταυρινάκη,
 Δικηγόρον,
 Πλατεῖα Δικαστηρίων,

ΛΕΥΚΩΣΙΑΝ

MILIA (FAMAGUSTA DT.) CO-OPERATIVE CREDIT SOCIETY
ΣΥΝΕΡΓΑΤ. ΠΙΣΤΩΤΙΚΗ ΕΤΑΙΡΕΙΑ ΜΗΛΙΑΣ (ΑΜΜΟΧΩΣΤΟΥ)

Προς τις



Κυρία Κωνσταντίνη

Γραμμάτιο 1780

Λευκωσία.

THESE ORGANIZATIONS
STATIONERY PRINTED
EACH OF THEIR LOGOS
AND THUS PROVIDING
EXCELLENT OPPORTUNITIES
TO IDENTIFY CAMPAIGNS
SINCE MANY OF THEM
OPERATED IN RURAL
AREAS, SOME OF THEIR
CANCELS TEND TO BE

MILLIA
G.R. RURAL SERVICE
TO NICOSIA

1/2 pi + 1 pi
SINGLE RATE

NICOSIA 12 MY 48
RECEIVER MARK C

XYLOTYMBΟΥ LAND LEASING CO-OPERATIVE SOCIETY L
ΣΥΝΕΡΓΑΤΙΚΗ ΕΤΑΙΡΕΙΑ ΕΝΟΙΚΙΑΣΕΩΣ ΓΑΙΩΝ ΞΥΛΟΤΥΜΠΟΥΣ Λ

G.R.
XYLOTYMBΟΥ
RURAL SERVICE
(TYPE 28)
TO
NICOSIA

1 1/2 pi PAYS
SINGLE RATE

LARNACA (AM)
TRANSIT MARK
AND
NICOSIA (PM)
RECEIVER MARK
BOTH
11 MY 48 (TYPE 5)

118
Ενυμωσ Κ=α



Εξοφλησ Εταιρείων

Λευκωσία

PRASTIO (MORPHOU) CO-OPERATIVE CREDIT SOCIETY
ΥΝΕΡΓΑΤ. ΠΙΣΤΩΤΙΚΗ ΕΤΑΙΡΕΙΑ ΠΡΑΣΤΕΙΟΥ (ΜΟΡΦΟΥ)

Τίσις νιν

Λογ. Κερ. Τράπεζα Α.Τ.Α



Ση Νεωνίας

SURFACE MAIL
INLAND

A VARIETY OF
ORIGINATING OFFICES

PRASTIO (MORPHOU)
G. R.
RURAL SERVICE
(TYPE 28) TO
NICOSIA

1 pi + 1/2 pi PAY THE SINGLE RATE

NICOSIA 26 AU 48 (TYPE 5)
RECEIVER ON THE REVERSE

MORA

G. R. RURAL SERVICE
(TYPE 26) TO
LARNACA

1 1/2 pi PAYS SINGLE RATE



Commissioner's Office

Nicosia

5

3



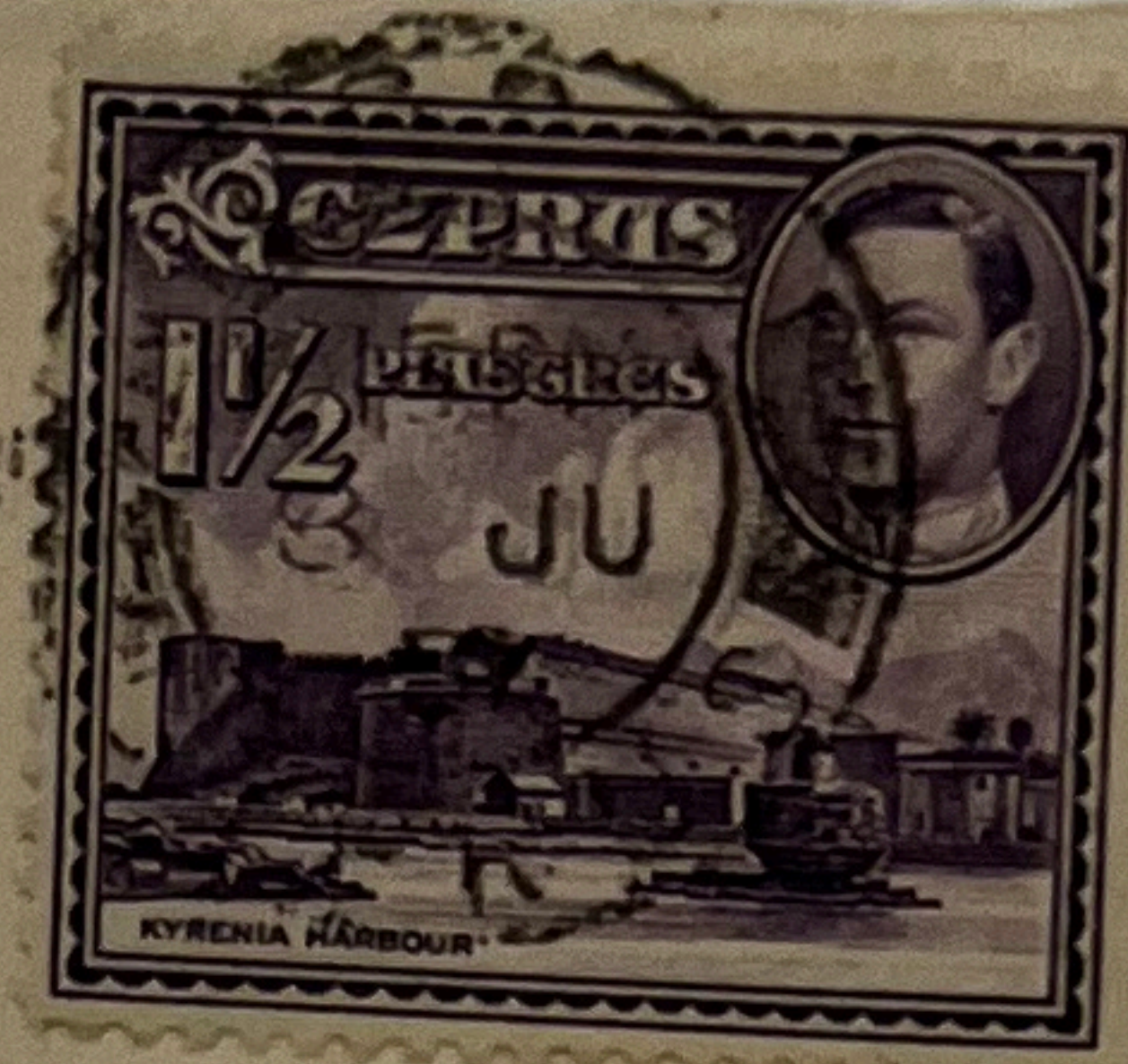
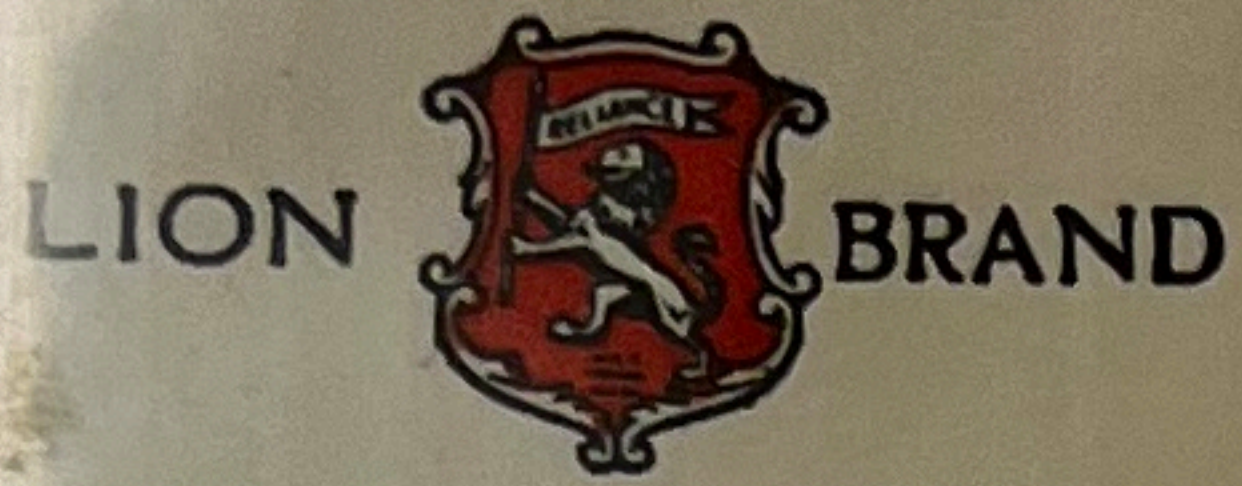
*Paul - S. Tometri
Bekir Pasha Sh
Larnaca*

LIMASSOL 7 JU 49 (TYPE 19A) TO L
LOWER RIGHT CORNER BLOCK OF
PAYS SINGLE RATE
LARNACA 7 JU 49 (TYPE 5) RECEI

STAPLES

INTER-CITY ADVERTISING COVERS

SURF



Manager,
Bank of Cyprus Limited,
NICOSIA.

USE OF A COLO
ENSIGNIA ON
BUSINESS ENVE
HADN'T BEE
POPULAR WI
CYPRUS COMPA
UP TO THIS PO
IN TIME

NICOSIA

8 JU 54
(TYPE 19B) T

NICOSIA

1 1/2 pi PAYS
SINGLE RATE

AN UNUSUALLY
DECORATIVE
ENVELOPE FOR
CYPRUS IN
THIS PERIOD

NICOSIA

7 JY 54
(TYPE 19A) TO

NICOSIA

1 1/2 pi PAYS
SINGLE RATE

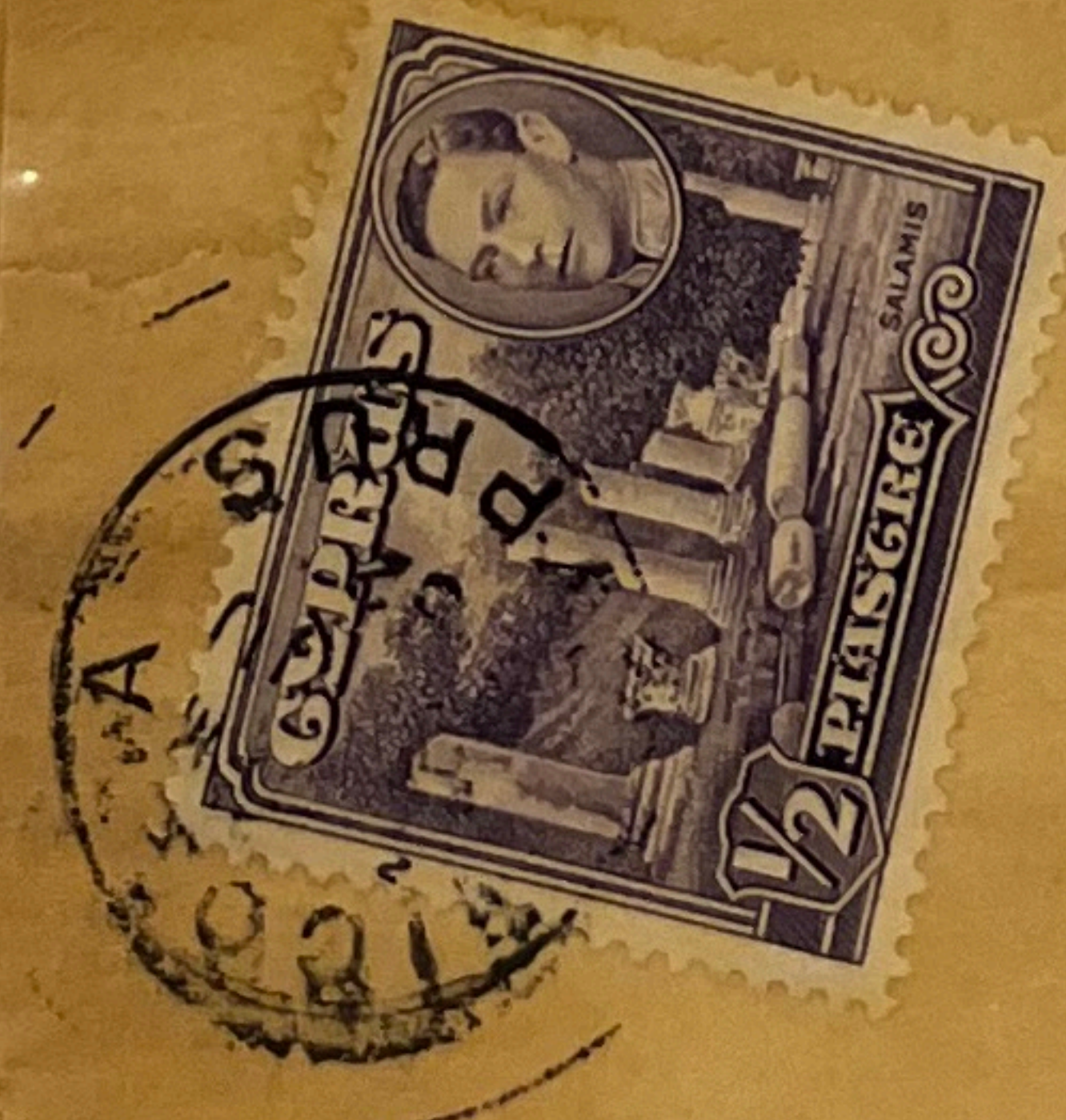
STAPLES®

NEWSPAPER

NICOSIA 5 JUN 52 (TYPE 5) TO NICOSIA
1/2 pi PAYS THE LOCAL NEWSPAPER RATE
FOR UP TO 4 oz.

THE

"Τὰ ρήματα,
ἃ ἐγὼ λαλῶ ὑμῖν,
ἀνευδήματα
καὶ ἰσὴ ἔσται."
(Ἰωάν. 7' 63)



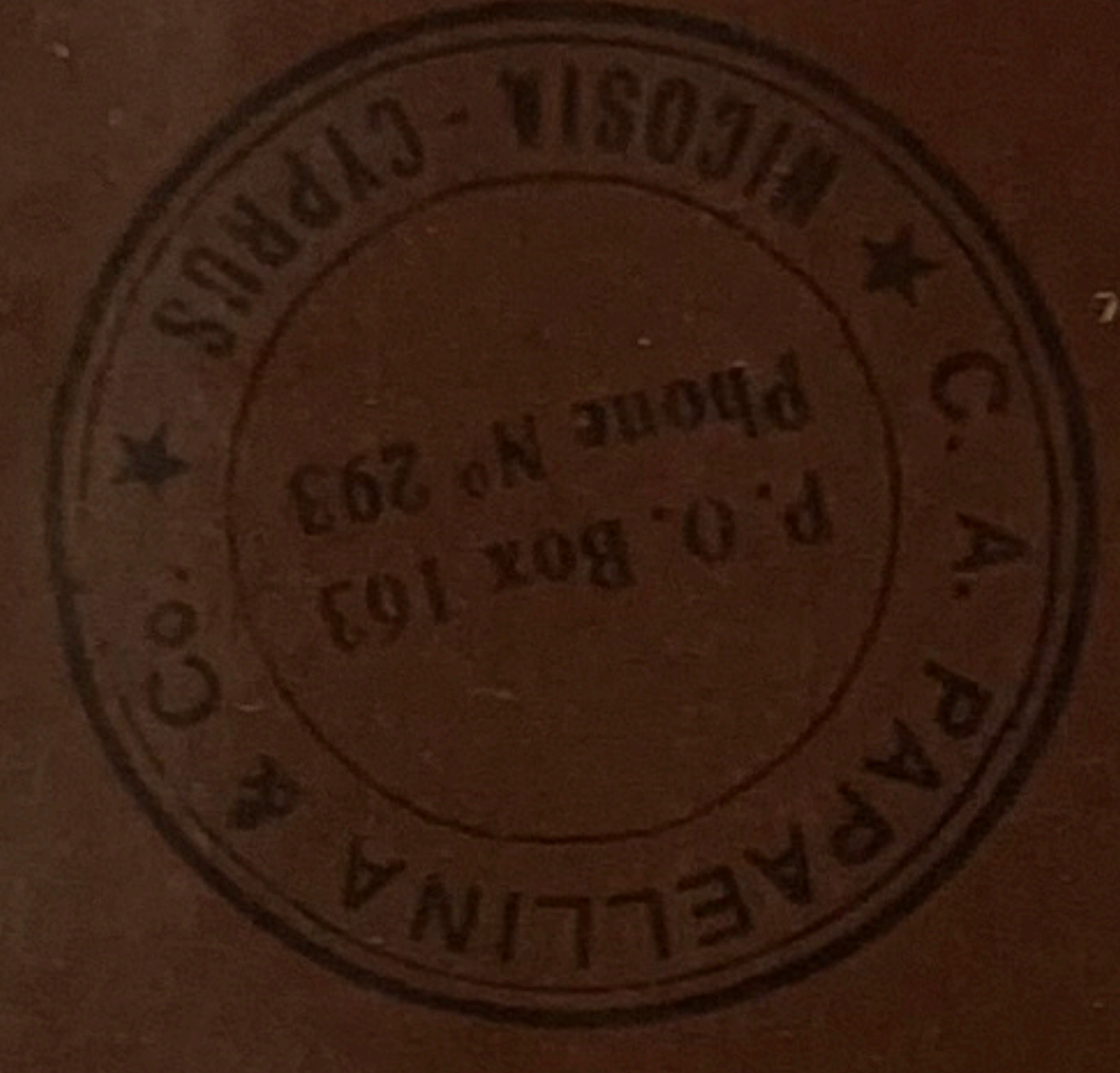
...α εργάζεται το μέγα ἔργον τῆς ἐνότητος
...ώπων. Μὲ τὴν χάριν τοῦ συνδέει τοὺς ἀνθρώ-
...ος τὸν Θεὸν καὶ πρὸς ἀλλήλους. Μὲ τὸν τρόπον
...οὶς κατευθύνει τὰς γενεὰς τῶν πιστῶν πρὸς
...ητα, διὰ τὴν ὁποίαν μὲ τὴν θερμότητα προση-
... Κύριος εἰς τὴν ἀρχιερατικὴν τοῦ προσευχῆν,
...τες ἔν ὧσιν» (Ἰωάν. 15' 21). "Ὅταν τὸ "Ἄγι-
...ἔδω εἶναι τὸ ἀξιοπρόσεκτον. "Ὅταν τὸ "Ἄγι-
...εἰσφάνει εἰς τὸ μυστηριώδες καὶ ἀνεξή-

καὶ ἡ ἰσὴ,
(Ἰωάν. 18' 6)

ΚΑΝ ΜΑΡΙΑΝ ΚΥΡΙΑ
ΚΑΤΗΜΑΚΛΙ ΛΕΥΚΩΣΙΑΣ

NEWSPAPERS
INLAND

THE AUREOMYCIN DIGEST



Dr. P. N. STASSIOS GARYRIEIDES

NICOSIA 25 SP 52 (TYPE 19A) TO NICOSIA
1 pi PAYS THE NEWSPAPER RATE FOR UP TO 8 oz.

