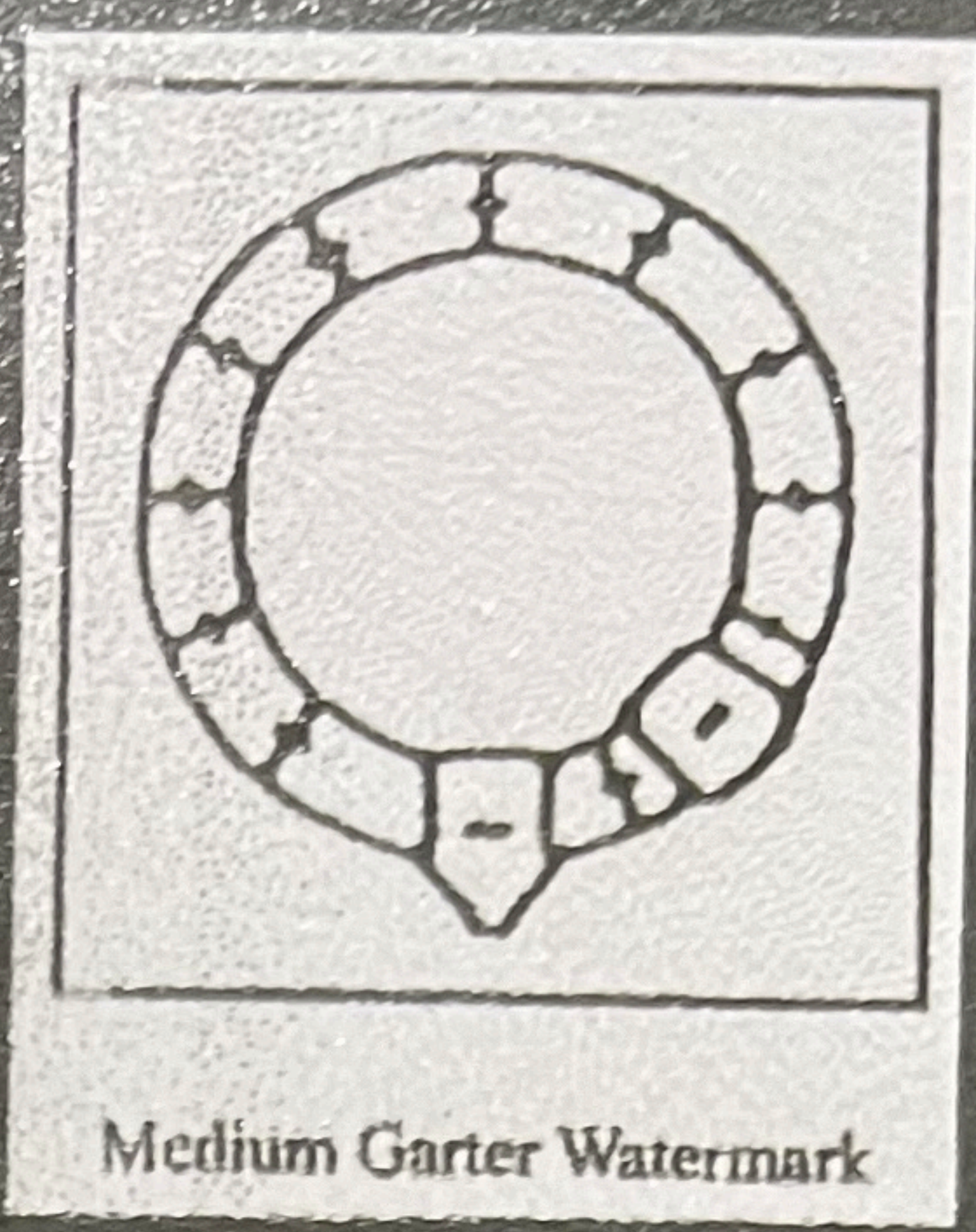
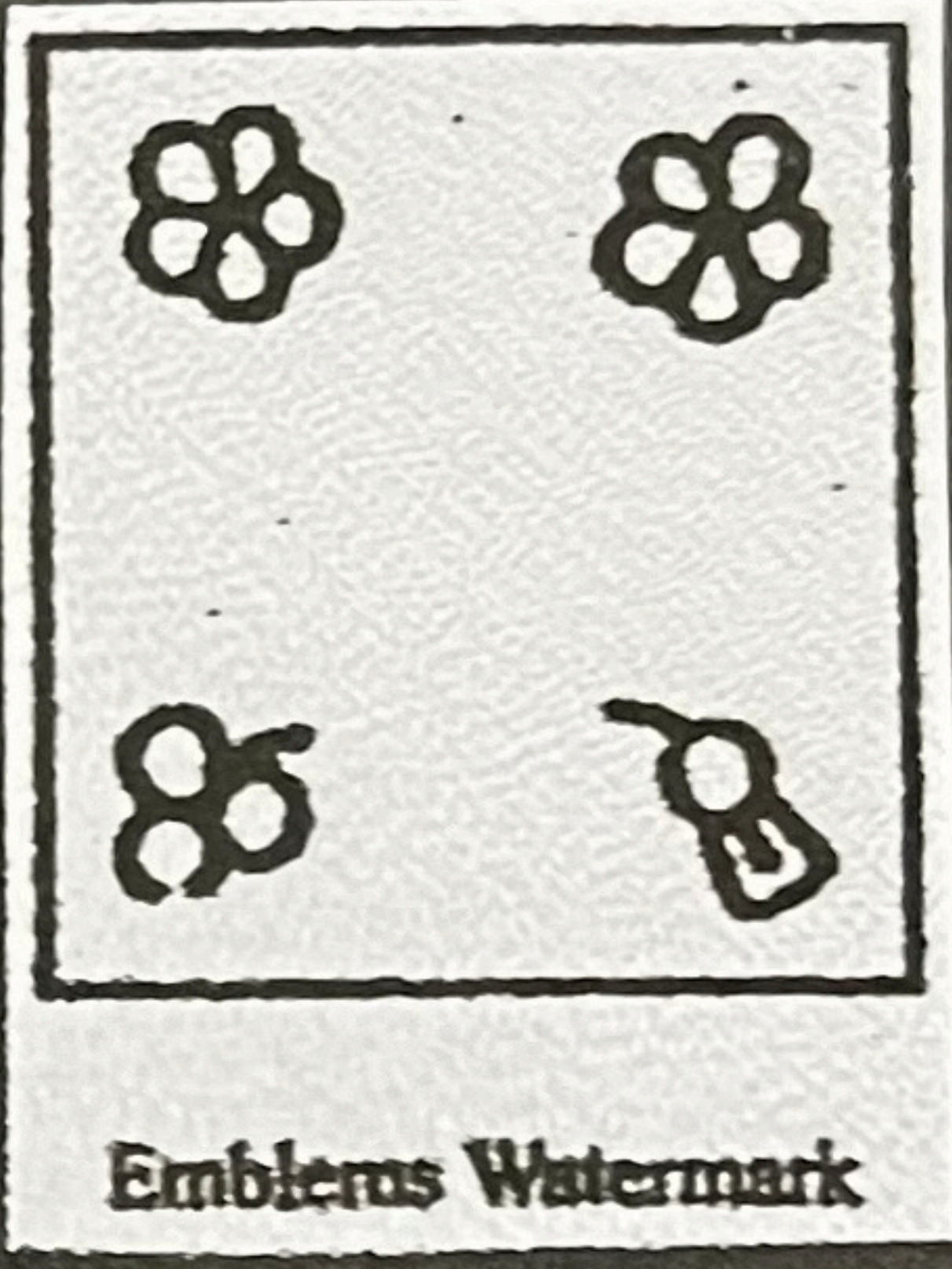


SG-104 broken leaf  
Six-pence 21-00



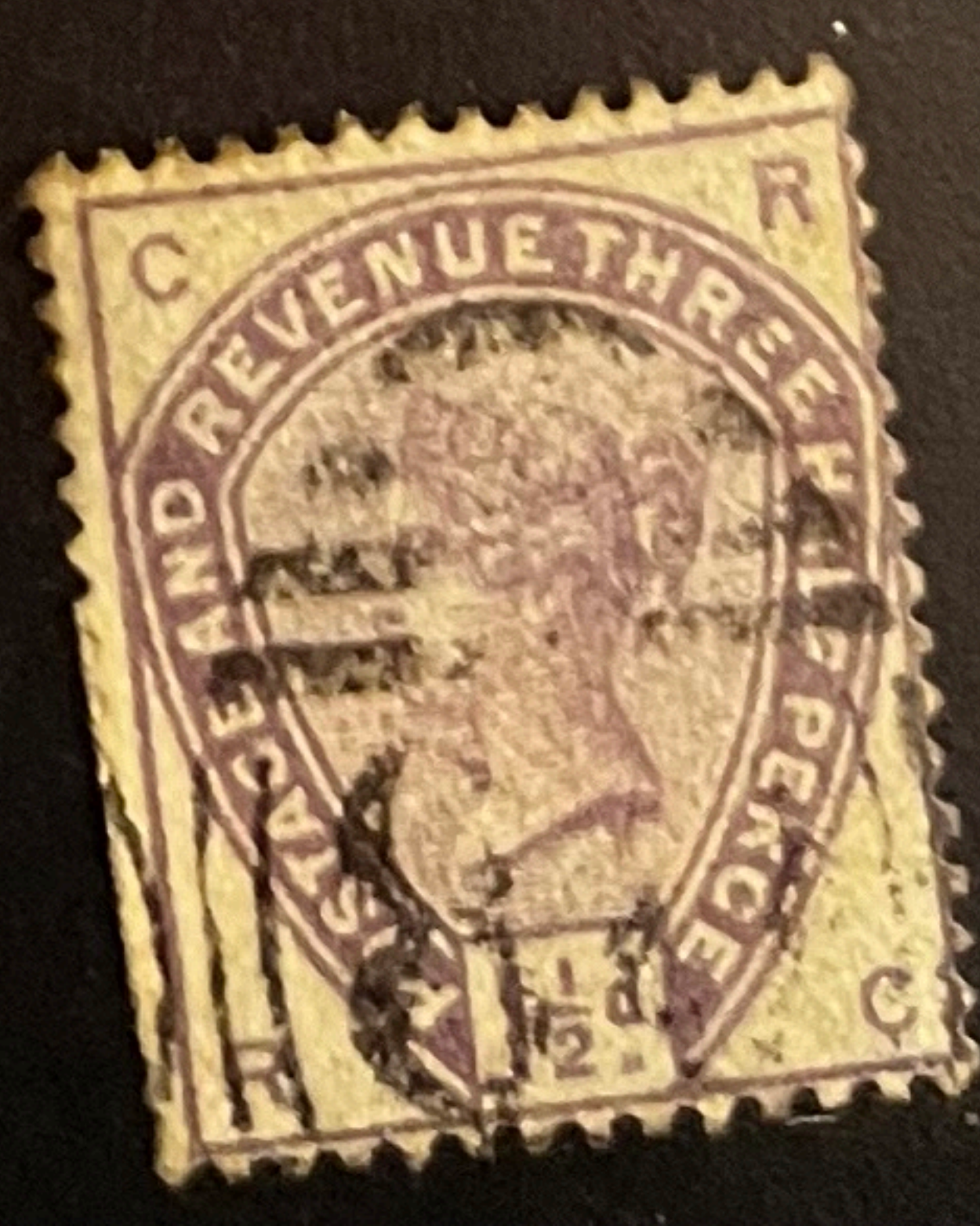
Medium Garter Watermark

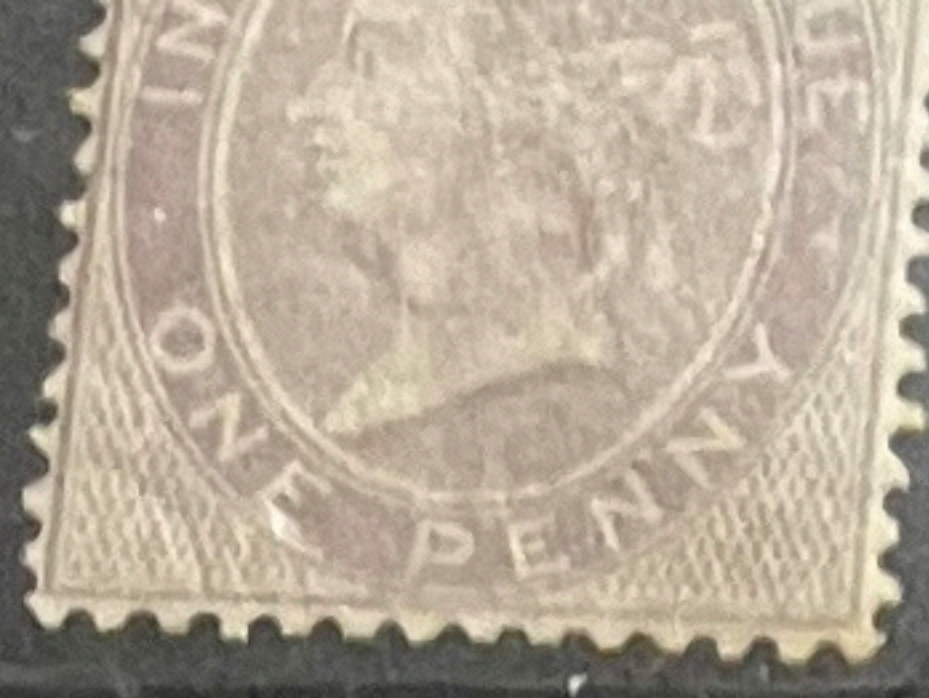


Emblems Watermark

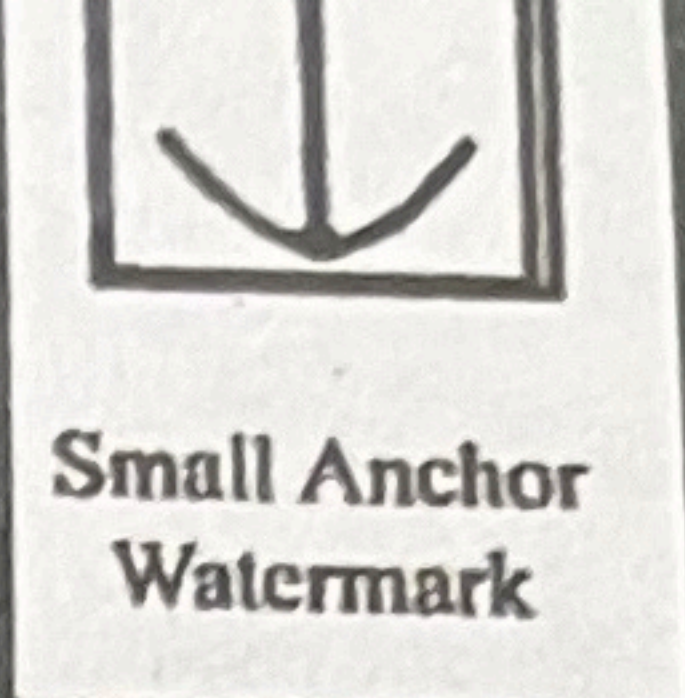


1 Oct), 6d, SG 70,  
lac, CDS Edinburgh  
Fine Used





QV 1867 (01 Sept), 1d, Postal Fiscal, SG F18, Type L19, Purple, o.g., UMM



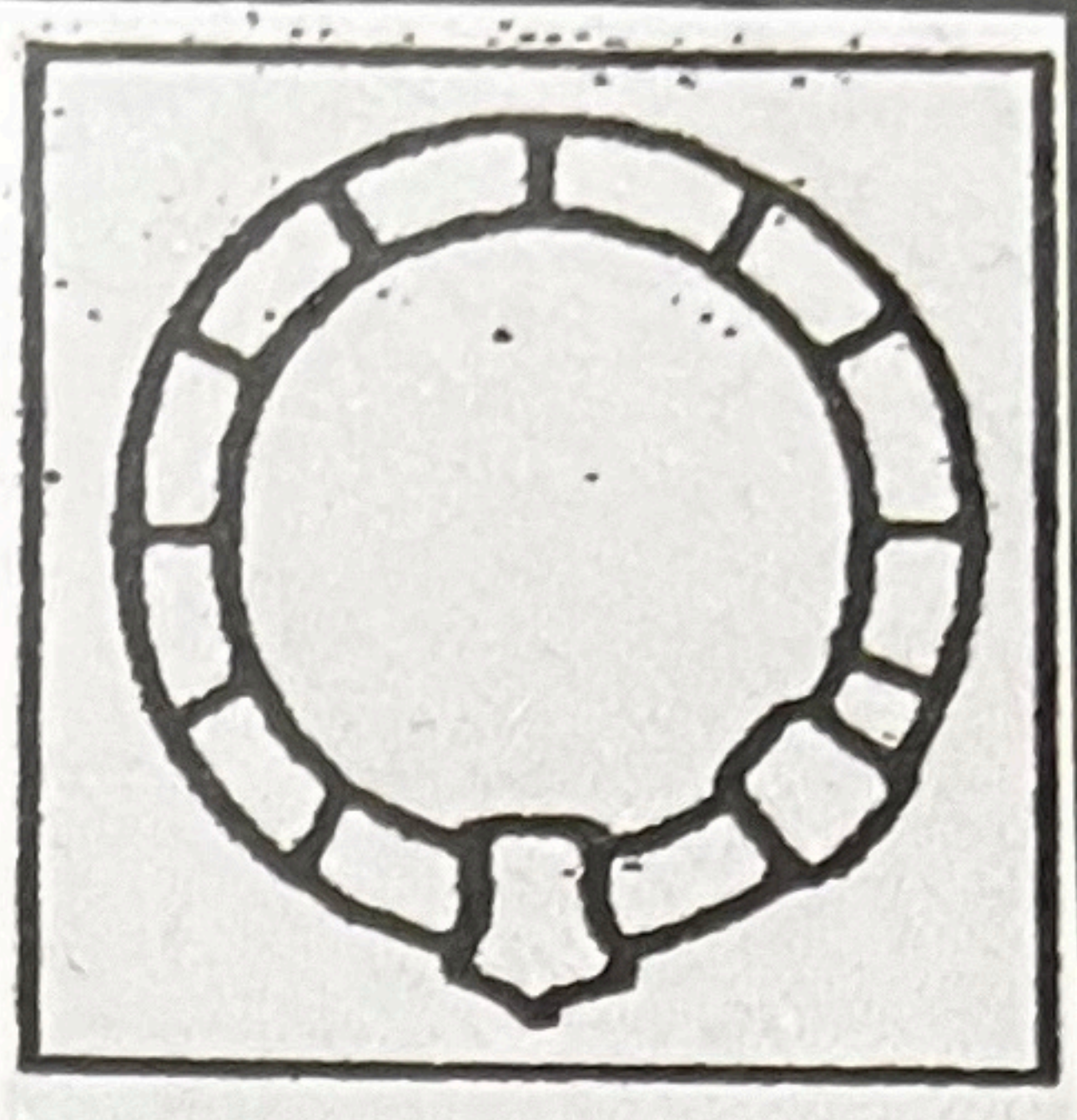
Small Anchor Watermark



Spray Watermark



QV 1867 (12 Jul), 3d, EF, SG 103, J34, Plate 9, Rose, Used



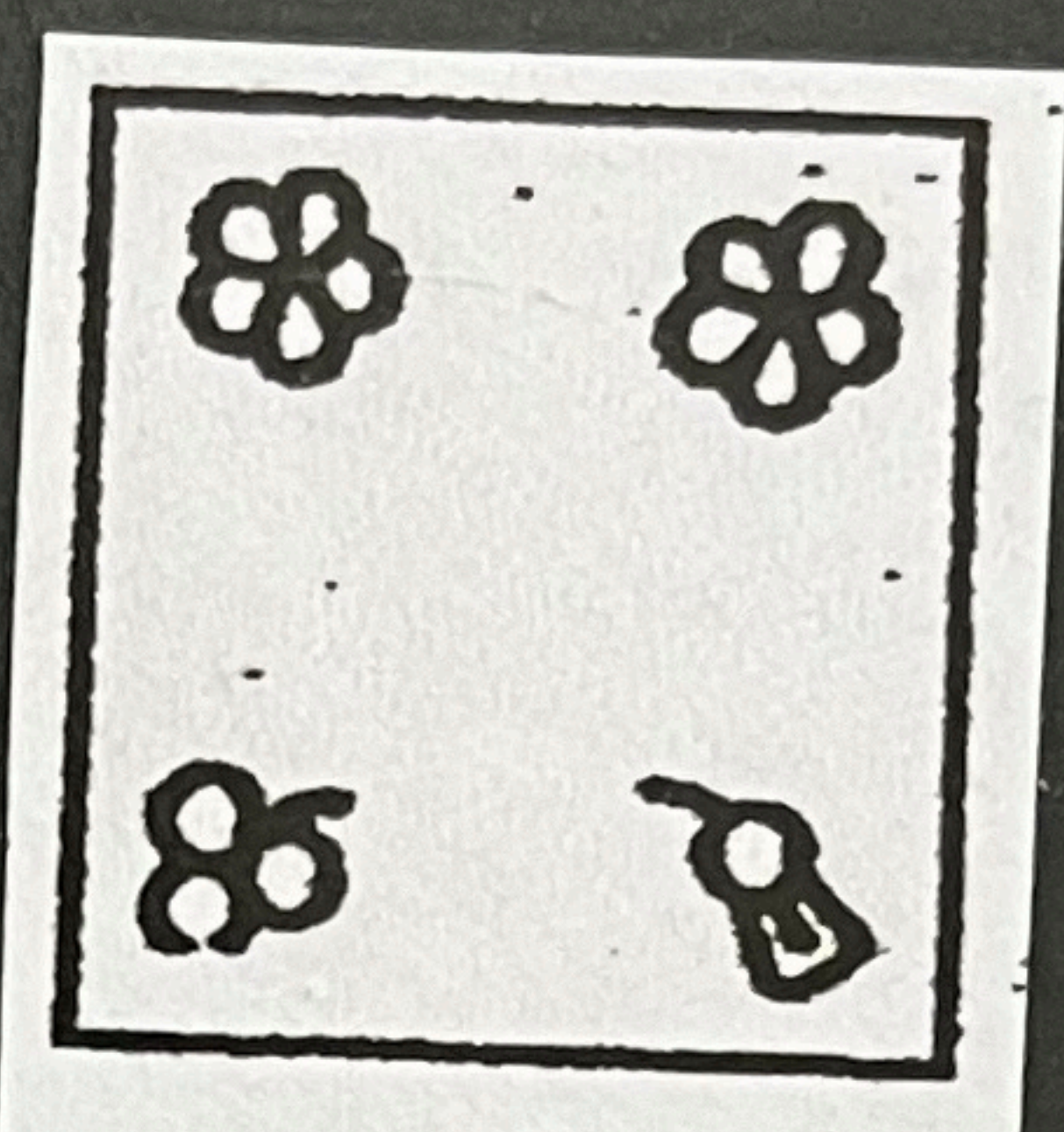
Large Garter Watermark



QV 1865 (04 Jul), 3d, J93, J54, Plate 7, D, Used



QV 1865 (07 Mar), 6d CA, SG 96/97, J74, Plate 6, Lilac, Used, Six-pence with Hyphen



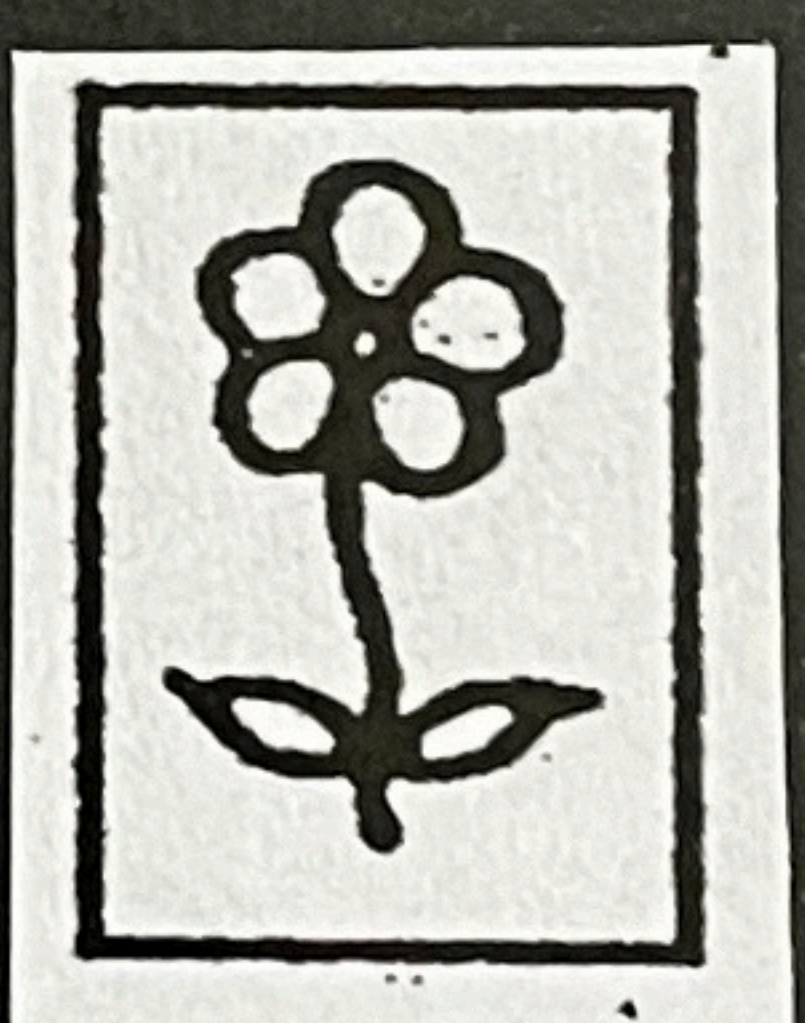
Emblems Watermark



QV 1865 (07 Mar), 6d JA, SG 96/97, J73, Plate 5, Lilac, Used, Six-pence with Hyphen



QV 1869 (08 Mar), 6d QF, SG 108/109, J76, Plate 8, Lilac, Used, No Hyphen in Six Pence



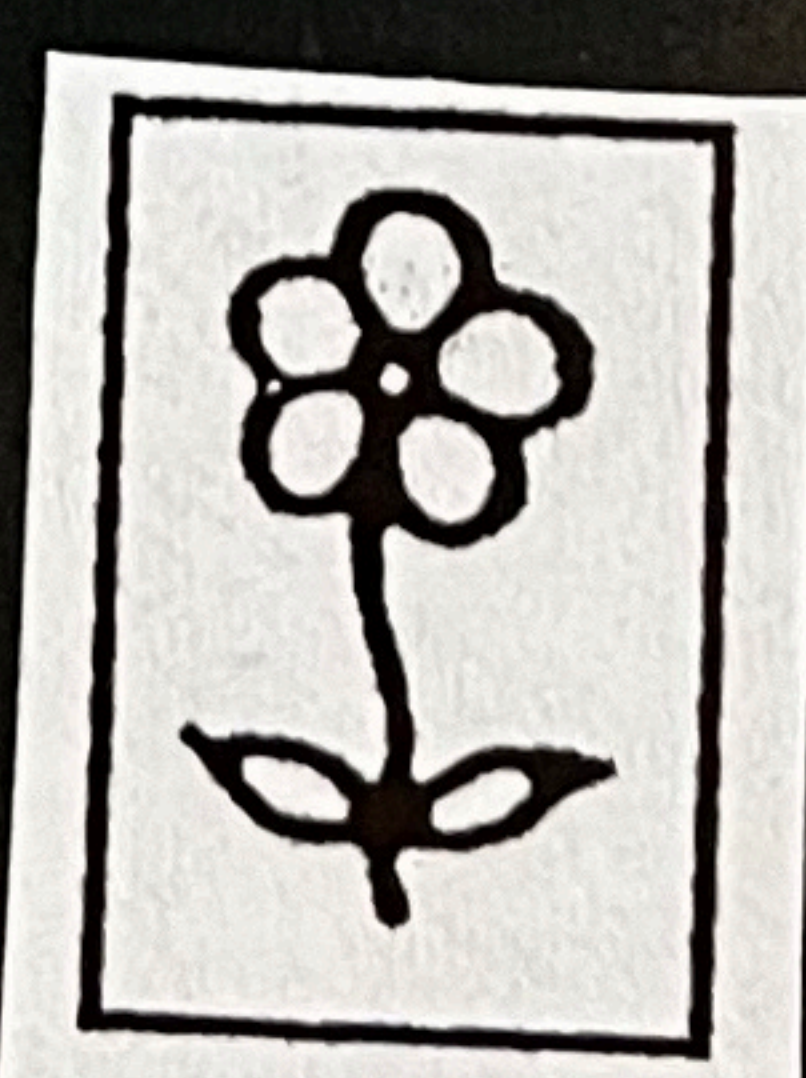
Spray Watermark



QV 1869 (08 Mar), 6d JI, SG 109, J77, Plate 8, Lilac, Used, No Hyphen in Six Pence



QV 1867 (13 Jul), 1/- GI, SG 115/117, J104, Plate 4, Deep Green, Used



Spray Watermark



QV 1867 (13 Jul), 1/- PE, SG 115/117, J106, Plate 6, Deep green, Used



QV 1867 (01 Jul), 2/- EH, SG 118, J118/1, Plate 1, Dull Blue, Used



Spray Watermark



QV 1867 (01 Jul), 2/-, J120, Used, Space Filler



QV 1871 (16 Jan), 1d, G, SG 43/44, G1, Plate 145. Rose-red, Fine Used with Spoon Cancel



Large Crown Watermark (modified and introduced in March 1861)



QV 1871 (04 Feb), 1d, DD, SG43/44, G1, Plate 147, Rose-red, Die II Alphabet II, Fine Used



Large Crown Watermark (modified and introduced in March 1861)



QV 1877 (19 May), 1d, PI, SG 43/44, G1, Perf 14, Plate 203, Rose-red, Top Right Letter Missing, o.g, UMM

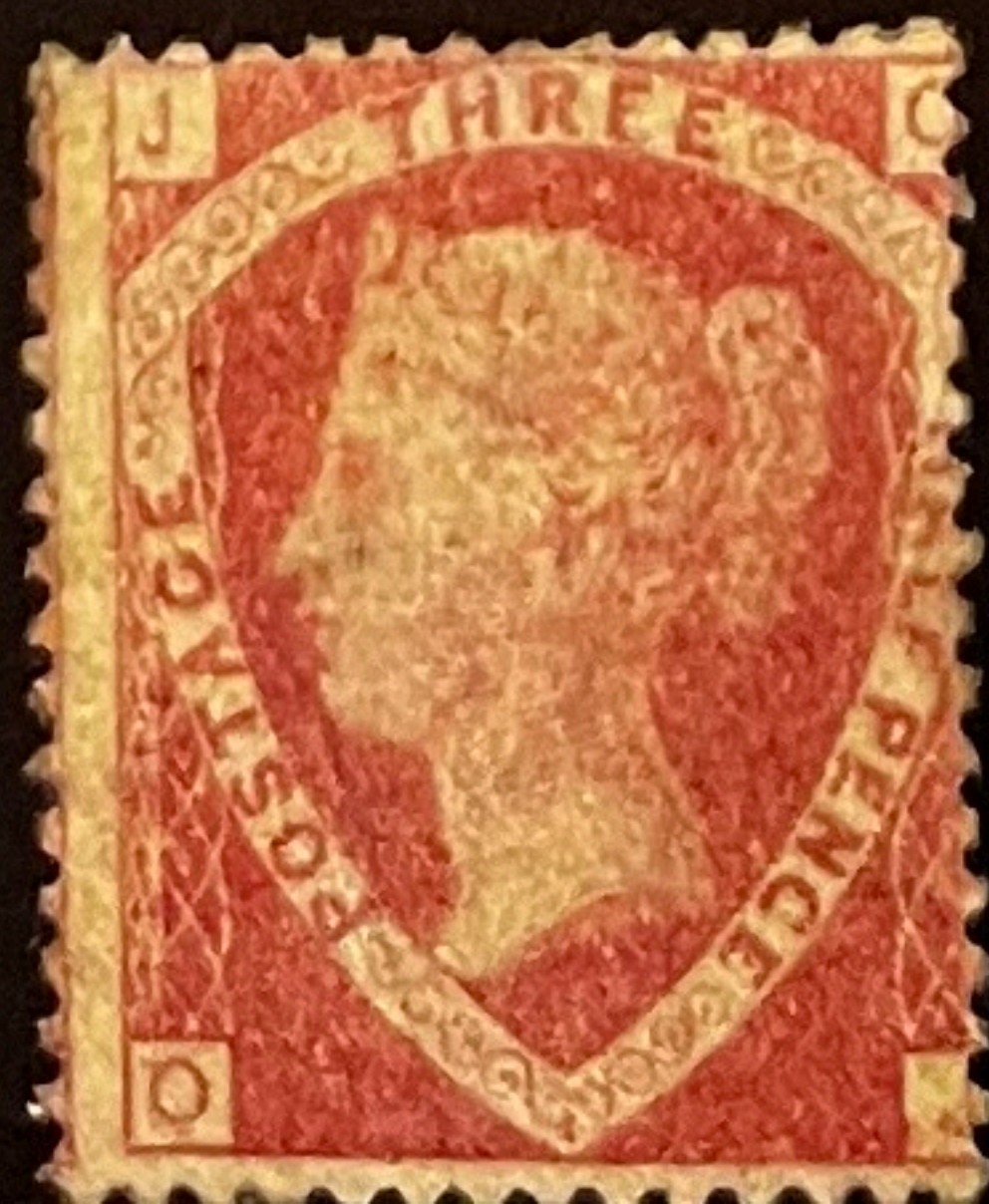


Large Crown Watermark (modified and introduced in March 1861)



QV 1870 (01 Oct), 1/2d, G-N, SG 48/49, G4, Plate 4, Rose, W3 Half penny, o.g., UMM

*W3 Half penny*



QV 1870 (01 Oct), 1 1/2d, OJ, SG51, G6, Plate 1, Rose-red, o.g., UMM



Large Crown Watermark (modified and introduced in March 1861)

129

1<sup>st</sup> Per Label. 1/2 Per Row of 12.

11..... Per Sheet.

Place the Labels above the Address and towards

Be Back be careful not to remove the

QV 1841 - 1862 Selvidge from R hand side side showing instructions how to use Labels.

60 PER LABEL 1/2 PER ROW OF 12 11..... PER SHEET Place the Labels above the Address and towards the



P1109



P178



P1107



P1123



P199



P116?



P1190



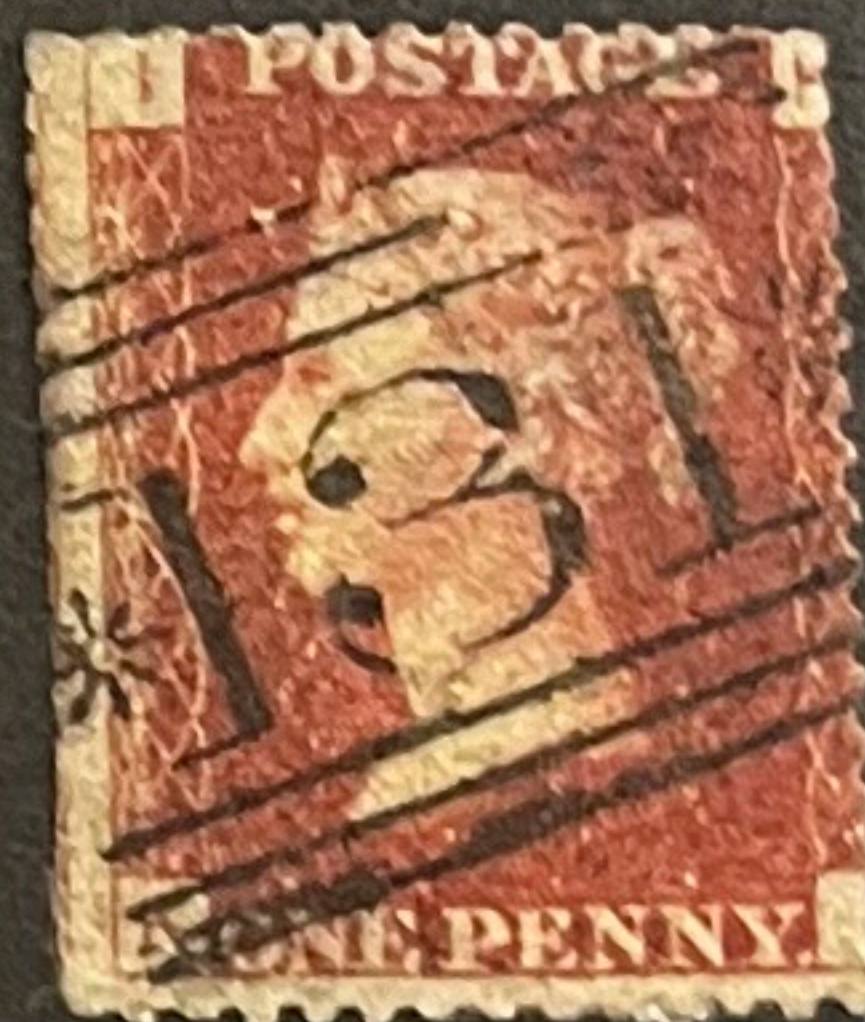
P1113



P173



P192



P1447



P1169



P1132



P1170



P1101



P113?



P1129



P119



P113



# QUEEN VICTORIA

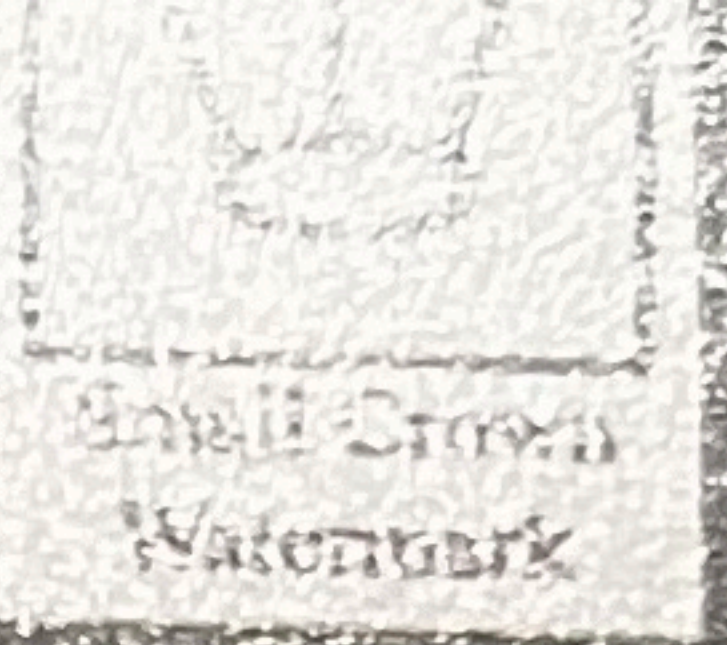


06 May 1840 Centenary of 1d Black.  
Reproductions of 1d Black and 1d Black mit  
VR in various colours. Was due to be  
shewn at Centenary Exhibition, in London,  
but cancelled due to war. The RPS had a  
smaller show but these labels were never  
sold.  
Printed by Waterlow and Sons.  
Should have left hand label to each 'stamp'.

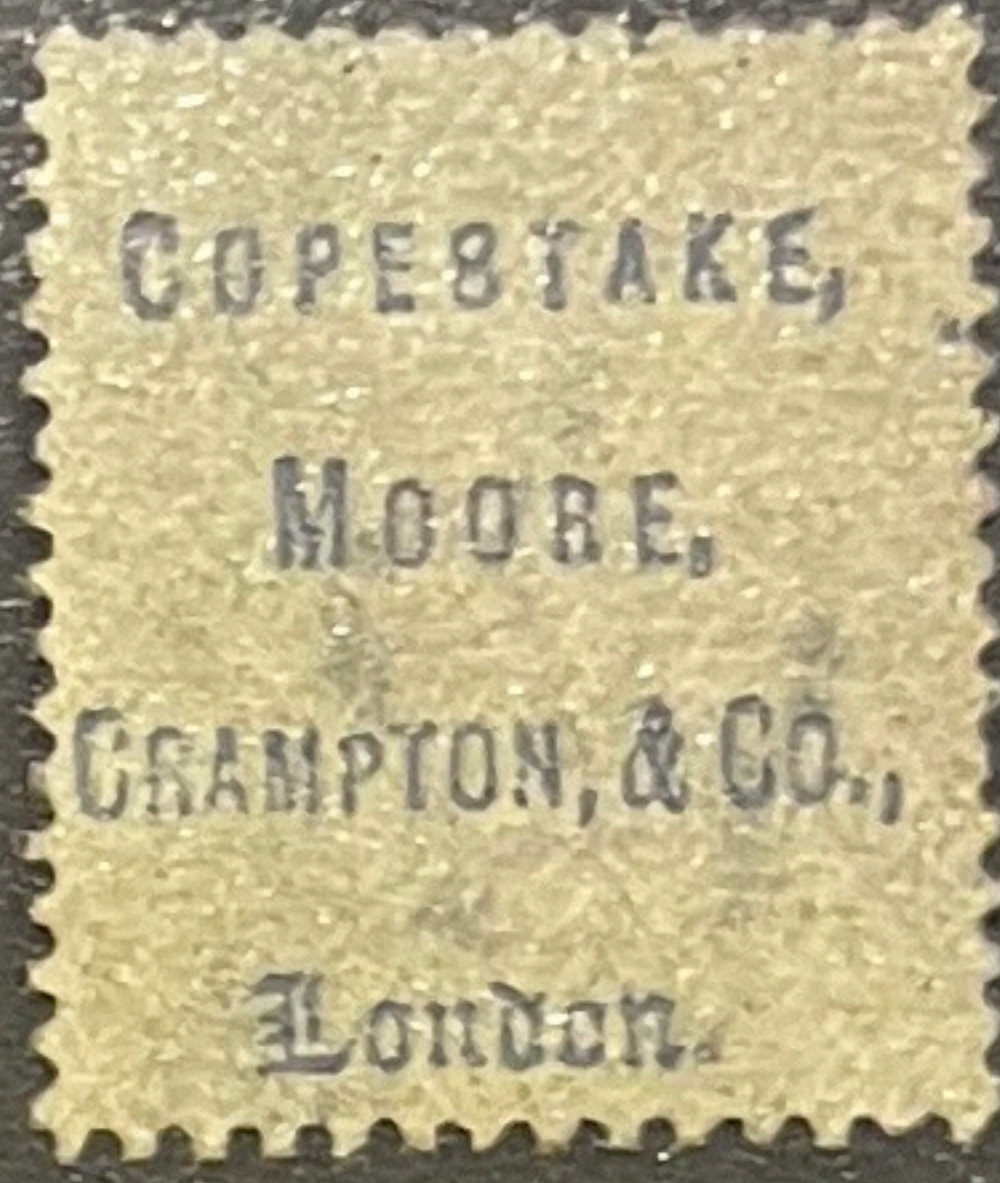


This is 1876 Plate 212, where the fault now  
lies at the side of the stamp, with a bit of  
the stamp to the right now appearing.

QV 1840 (22 Apr), 1d, CJ, SG 1/3, Plate 2, Black, Small Crown, Perkins Bacon, In excellent used condition with four good margins, Maltese Cross Cancel in Red



QV 1840 (18 Aug), 2d, II, Die I, SG 4/6, Type DS8, Imperf, Plate 2, Blue, Used



QV 1871 (16 Sept), 46, Type G3, Plate Blue, Small Crown Bacon, Used with Moore in Blue on ba



QV 1866 (16 Apr), 1d, SG 43/44, Type II, Plate 102, Red, o.g. V UMM



Large Crown Watermark (modified and introduced in March 1861)



QV 1874 (02 Apr), 1d, PH SG 43/44, G1, Type II, Perf 14, Plate 173, Red, Large Crown, Perkins Bacon, o.g. Wrinkled, LMM



QV 1869 (07 Jul), 2d, KG, 46/47, G3, Thin White Line Die II, Perf 14, Blue, Used



QV 1841, 1d, FF, SG 8/12, B1, Imperf, Die I, Alphabet I, Plate ?, Red, Small Crown, Perkins Bacon, No gum, Used, With "Ivory Head" caused by Prussiate of Potash causing Bleute paper. The head shows white on reverse of stamp. Stamp has two good margins and partial Maltese Cross in black.



Small Crown Watermark



QV 1841, 2d, KC, SG 13/15aa, E1, Imperf on Blued paper, Die I, Alphabet I, Plate ?, Blue, Small Crown, Perkins Bacon, No gum, Used, With "Ivory Head" caused by Prussiate of Potash causing Bleute paper. The head shows white on reverse of stamp.



SPECIMEN

5493/11s

1902-05 80pa on 5d, 4pi on  
10d, 12pi on 2s6d, opt  
'SPECIMEN' (type GB17) for  
UPU distribution, part to large  
part o.g. Small faults (gum  
creases, 4pi with thin spot),  
still fine appearance with fresh  
colours. (cat £150).



MANCHESTER  
1844



Messrs Bayshaw & Stevenson

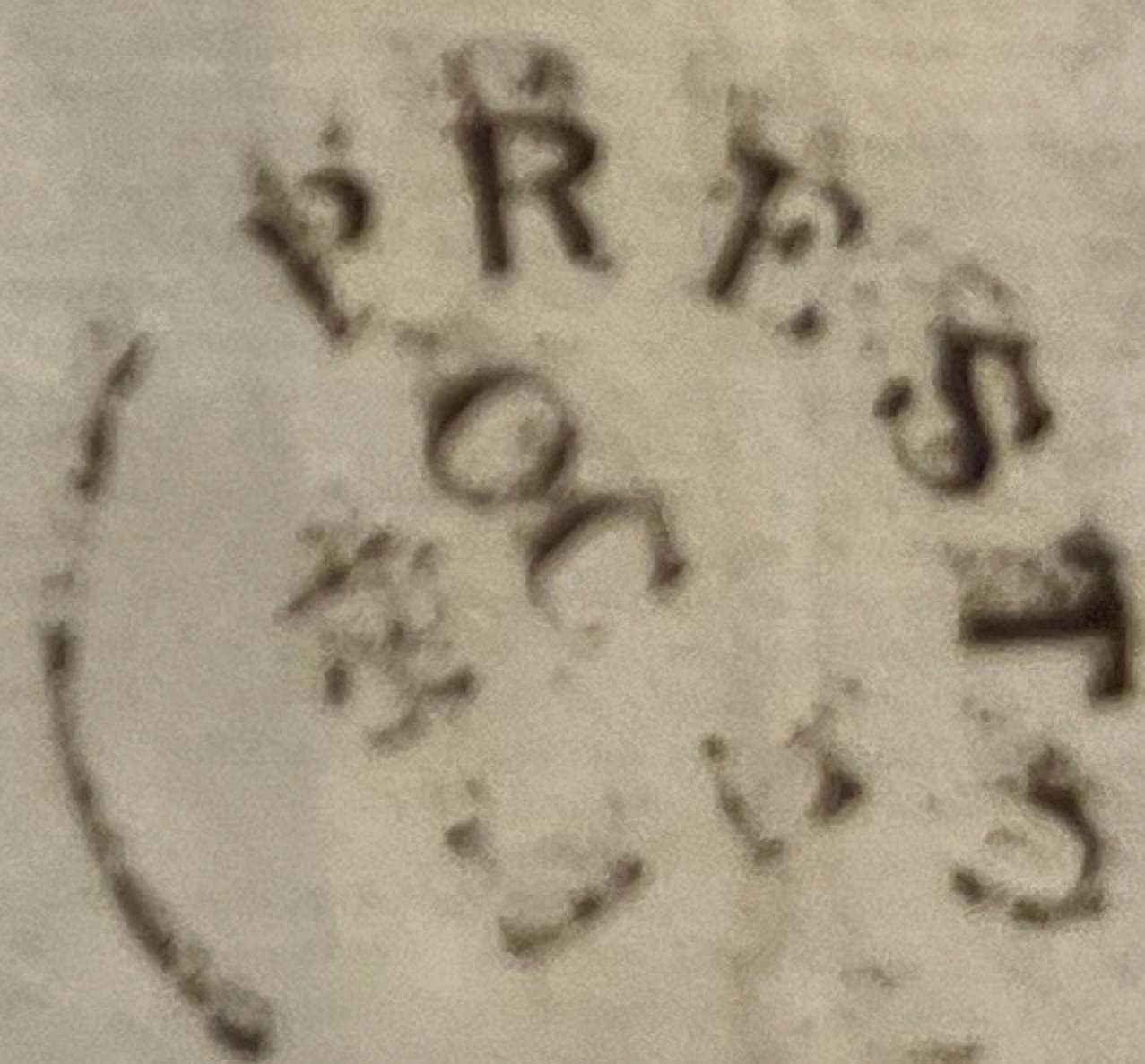
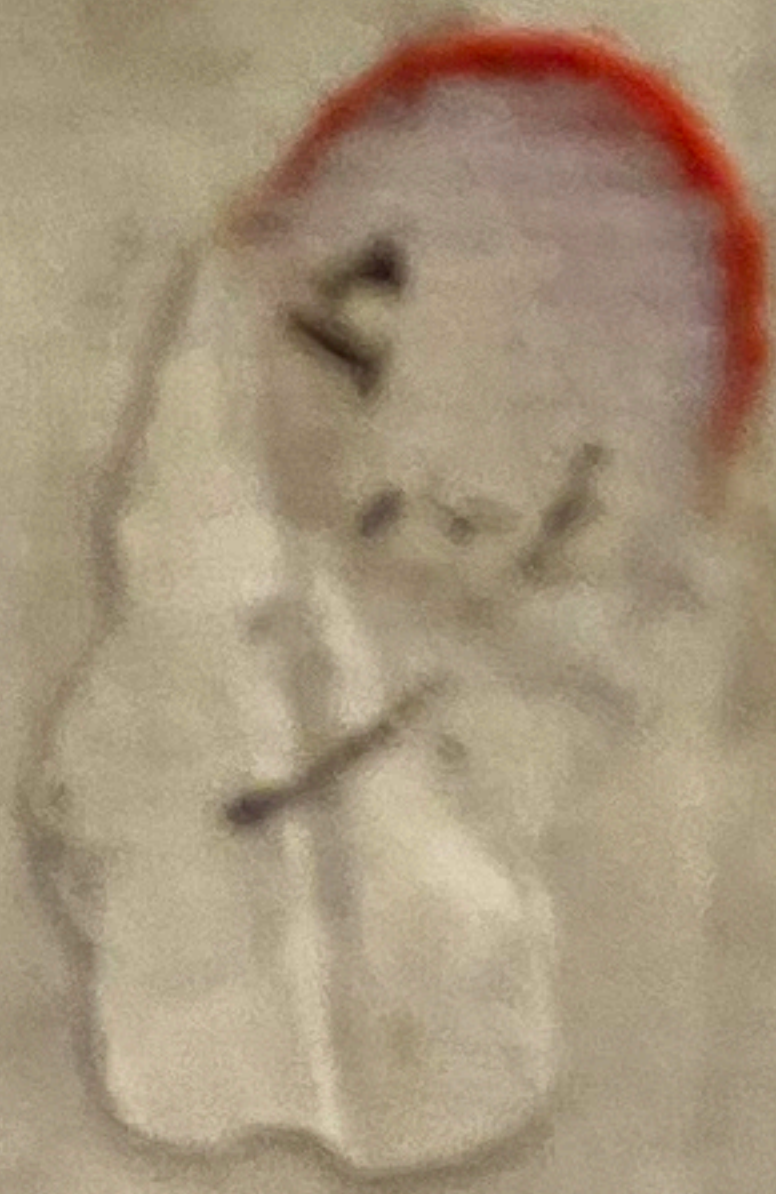
Solrs

Manchester

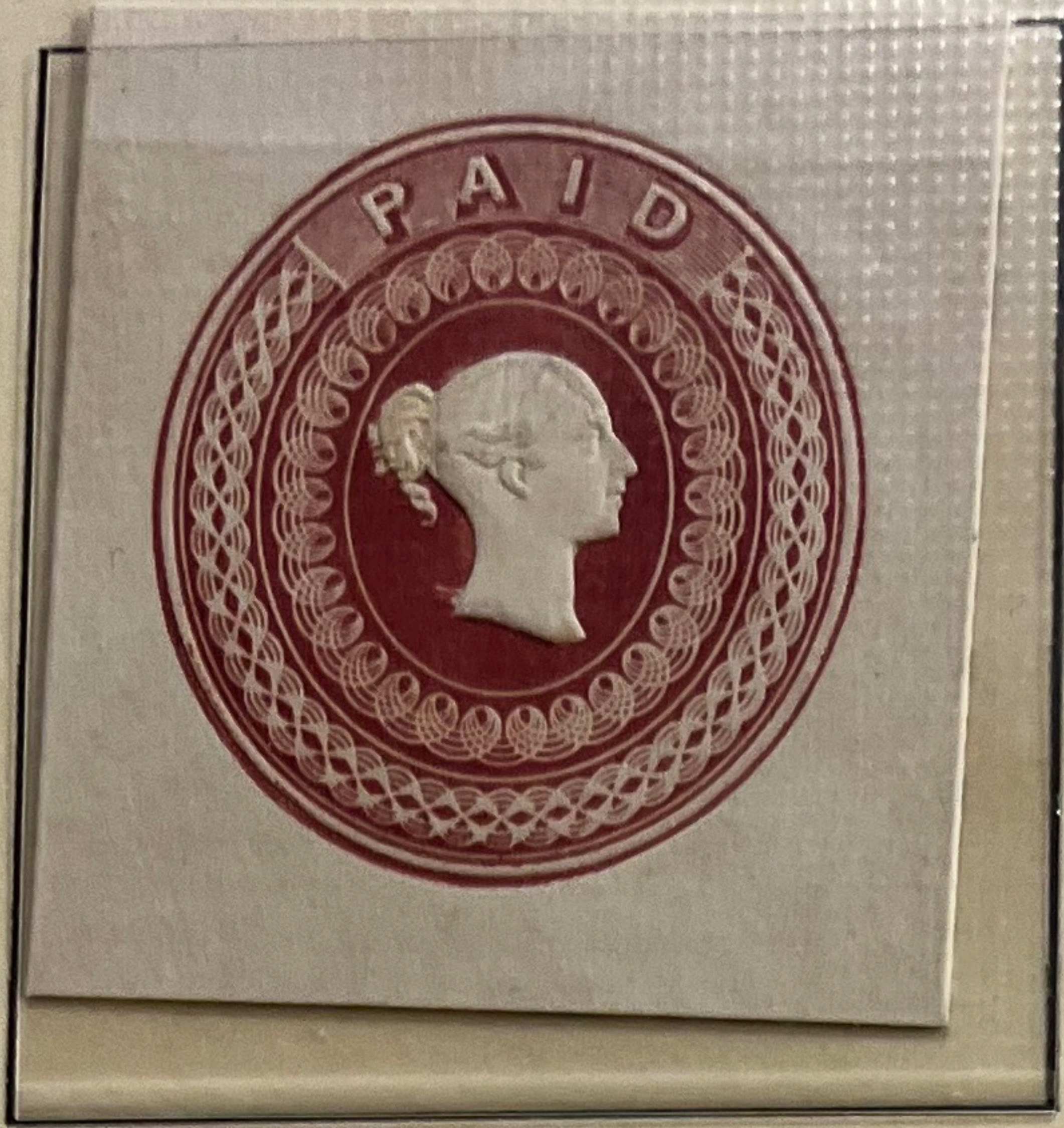
Manchester

Preston 1844

ESTD  
E. W.



Treasury 1859 Competition Essay  
An Essay is a proposed stamp submitted for consideration as part of a tender for a contract.



1848

Charles Whiting Essay

Reprinted in Art Union Journal

Embossed Paper Design in Pink



1848

Charles Whiting Essay

Reprinted in Art Union Journal

Embossed Paper Design in Deep Blue and Red



1940 1d Grey-Black

Proof



1860 's De La Rue 'Head Trial'

Essay Plate Proof in Purple



1940 2d

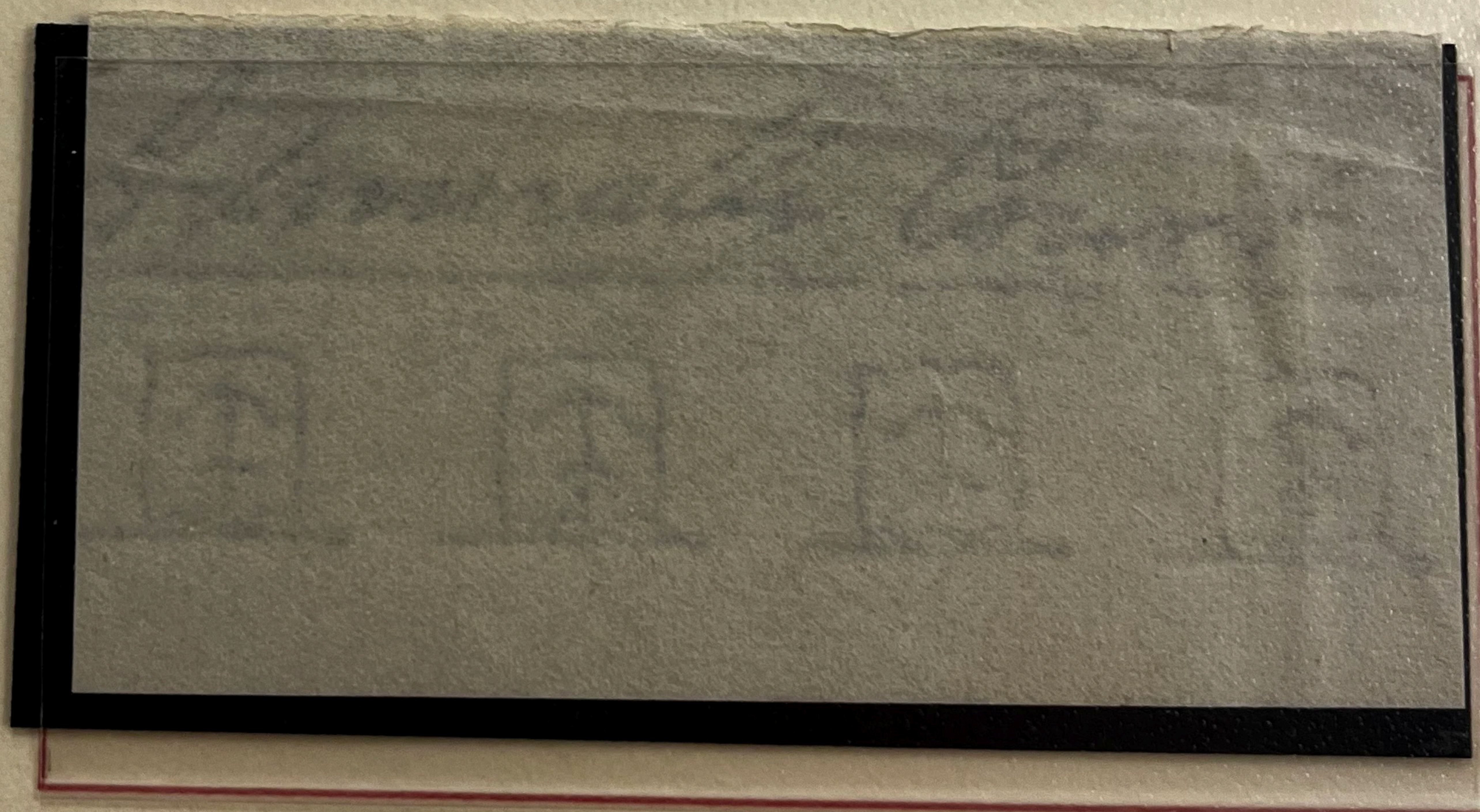
Proof





9 5 1884

Sample part sheet of Watermarked paper  
Six of Watermark Scales of Justice



1855

Admiralty Court  
Admiralty Court and 4 x Anchor in a box Watermarks



PERKINS BACON LTD LONDON, E.C. 4



PERKINS BACON LTD LONDON, E.C. 4

Labels in Black and Blue printed by Perkins Bacon for the cancelled 1940 Centenary Show.

## GEORGE V



On the left is 1911 1d Scarlet, Downey head design. This stamp is missing the tip of the crown.

On the right is 1922 1d Scarlet with Irish OP Type 1, printed OP in Ireland by Dollard and the sheet must have been added upside down for the OP to be added.

W  
35

116

335479



SG 441 Flaw in Neck  
VMM Cyl 116 R19/1



1911 1d Pale-rose Carmine Perf 15 x 14,  
with missing Perf hole on left middle due to  
missing pin on perf machine. The top of  
crown is also missing on top stamp.

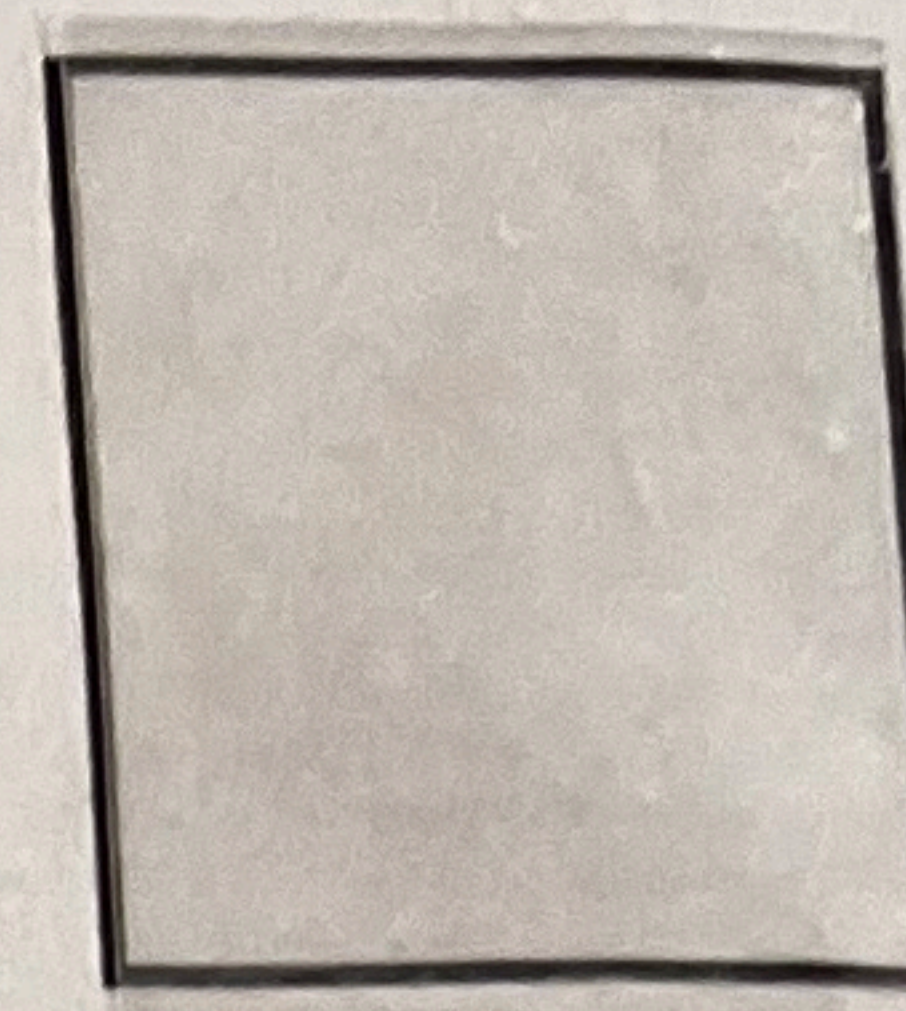
MISPRINTINGS. This section covers a variety of errors from spelling mistakes through colour errors to missing colours.



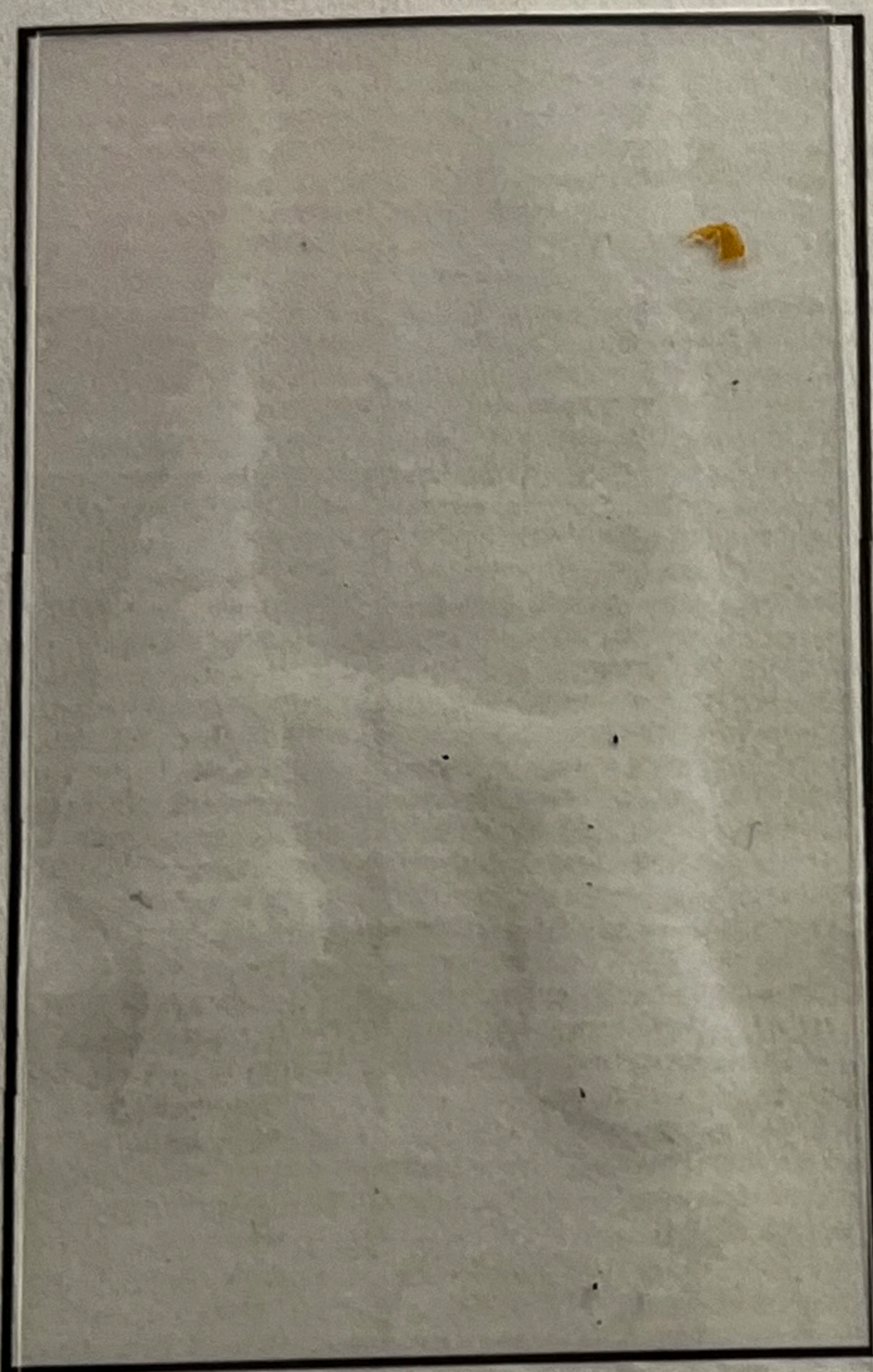
QV 1881 1d with missing dots bottom left probably caused by some detritus on the printing plate.



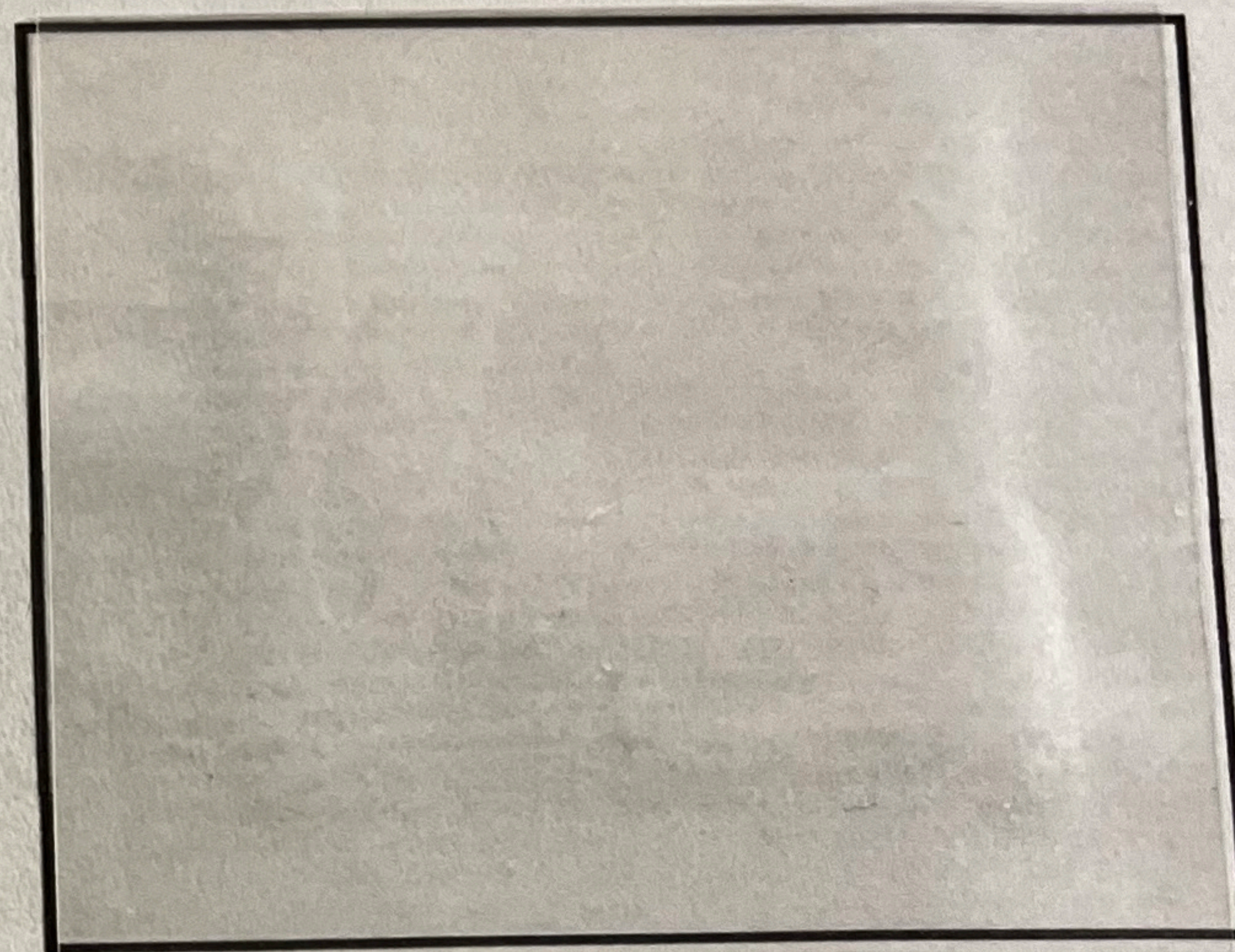
QV 1896 1/2d ARMY OFFICIAL but misspelt OFFICIAL.



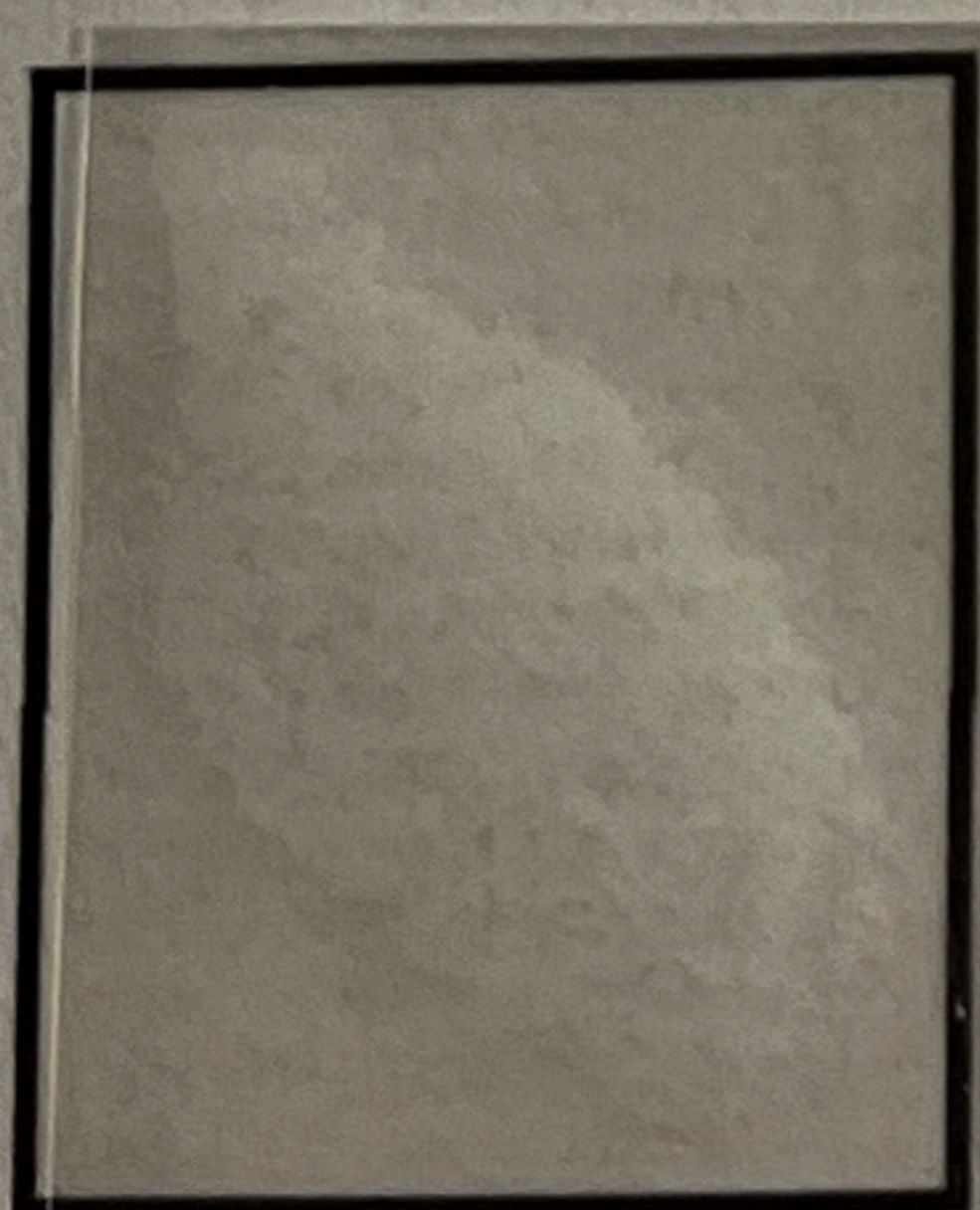
QV 1896 1d ARMY OFFICIAL but misspelt OFFICIAL.



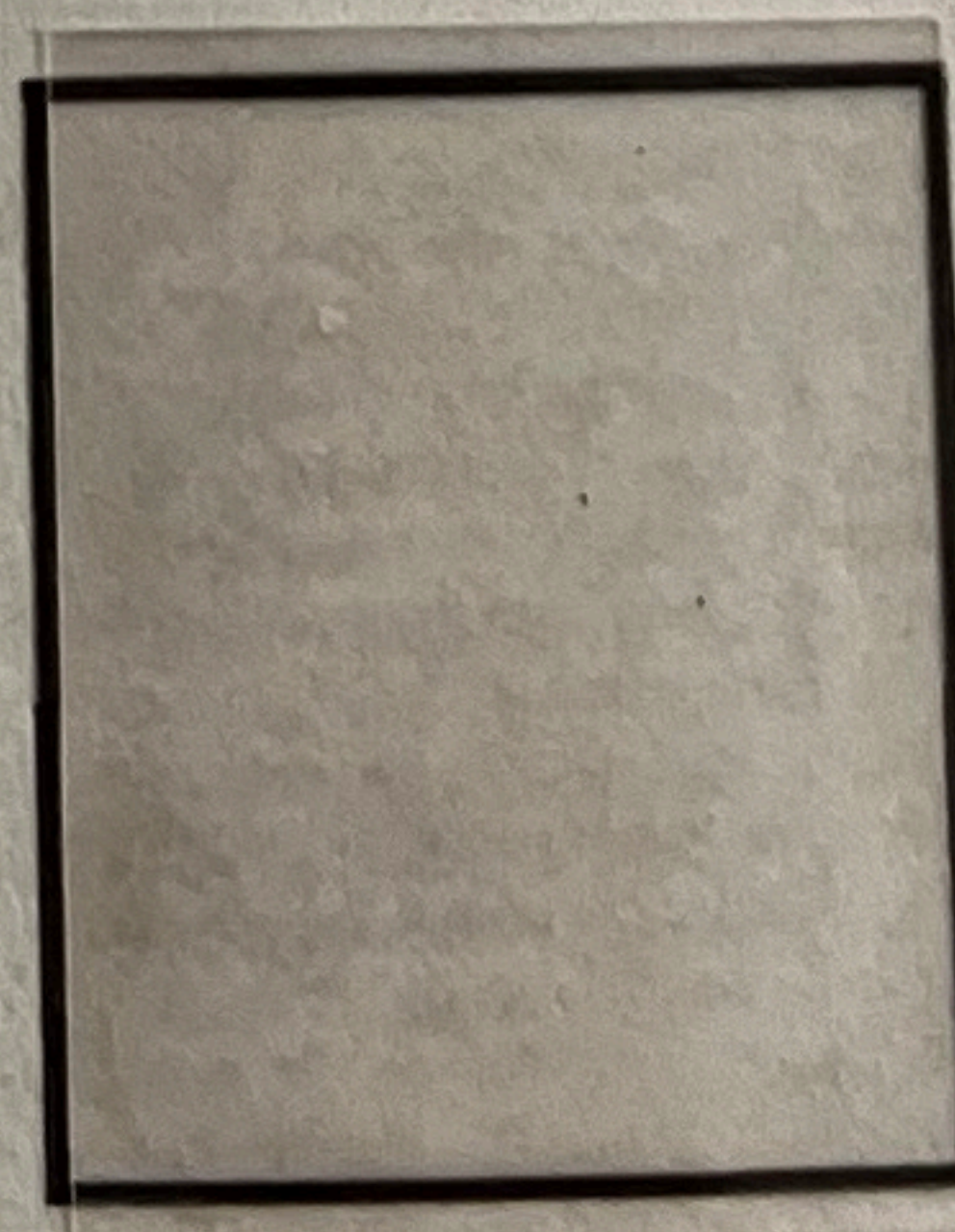
GV 1912 1d. This shows a plate flaw top right stamp where the 'O' of ONE is an 'Q'



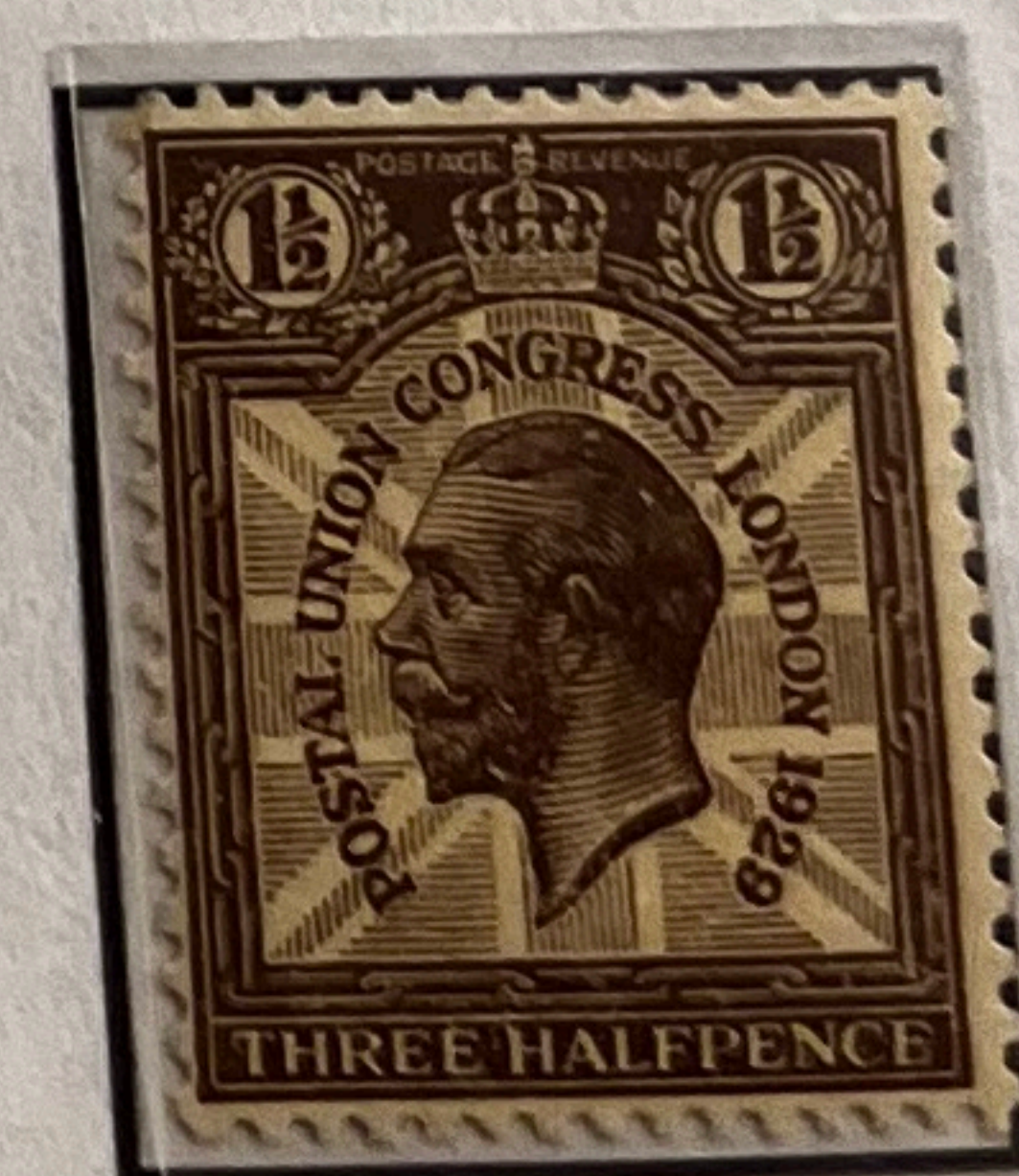
GV 1912 1 1/2d. This shows a plate flaw in the top right stamp where the 'E' of PENCE is an 'F'.



1929 1d Postal Union Congress. This shows a plate flaw in the stamp where the date 1929 says 1829.



1929 1 1/2d Postal Union Congress. This shows a plate flaw in the stamp where the 'O' of UNION is an 'Q'



1929 1 1/2d Postal Union Congress. This shows a plate flaw in the stamp where the 'L' of POSTAL has a gap



NORMAL  
UM/MINT



VARIETY  
EXTRA MARGINAL  
M/MINT

1911  
MATCHED PAIR  
SOMERSET HOUSE A. 11 CONTROLS  
FROM PH 9A PERFTYPE 2  
ONE SHOWING SCARCE VARIETY EXTRA MARGINAL  
THOUGHT TO HAVE BEEN USED TO PREVENT THE  
FRAUDULENT USE OF UNWATERMARKED PAPER

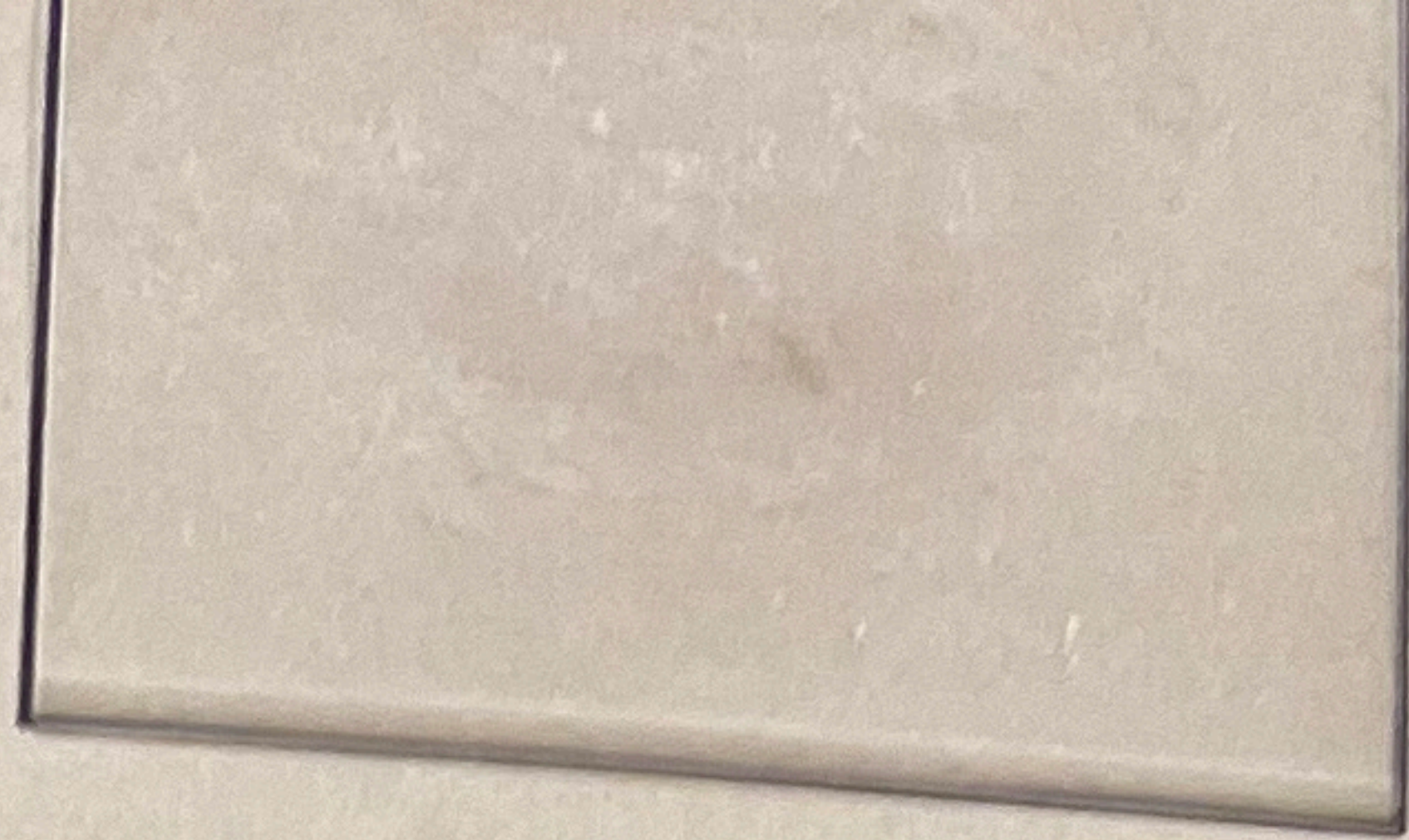
54125

SCHEME  
SHOWING THE  
DESIGNS AND COLOURS OF THE STAMPS  
THAT WILL BE IN USE AFTER  
APRIL THE 1st, 1884.





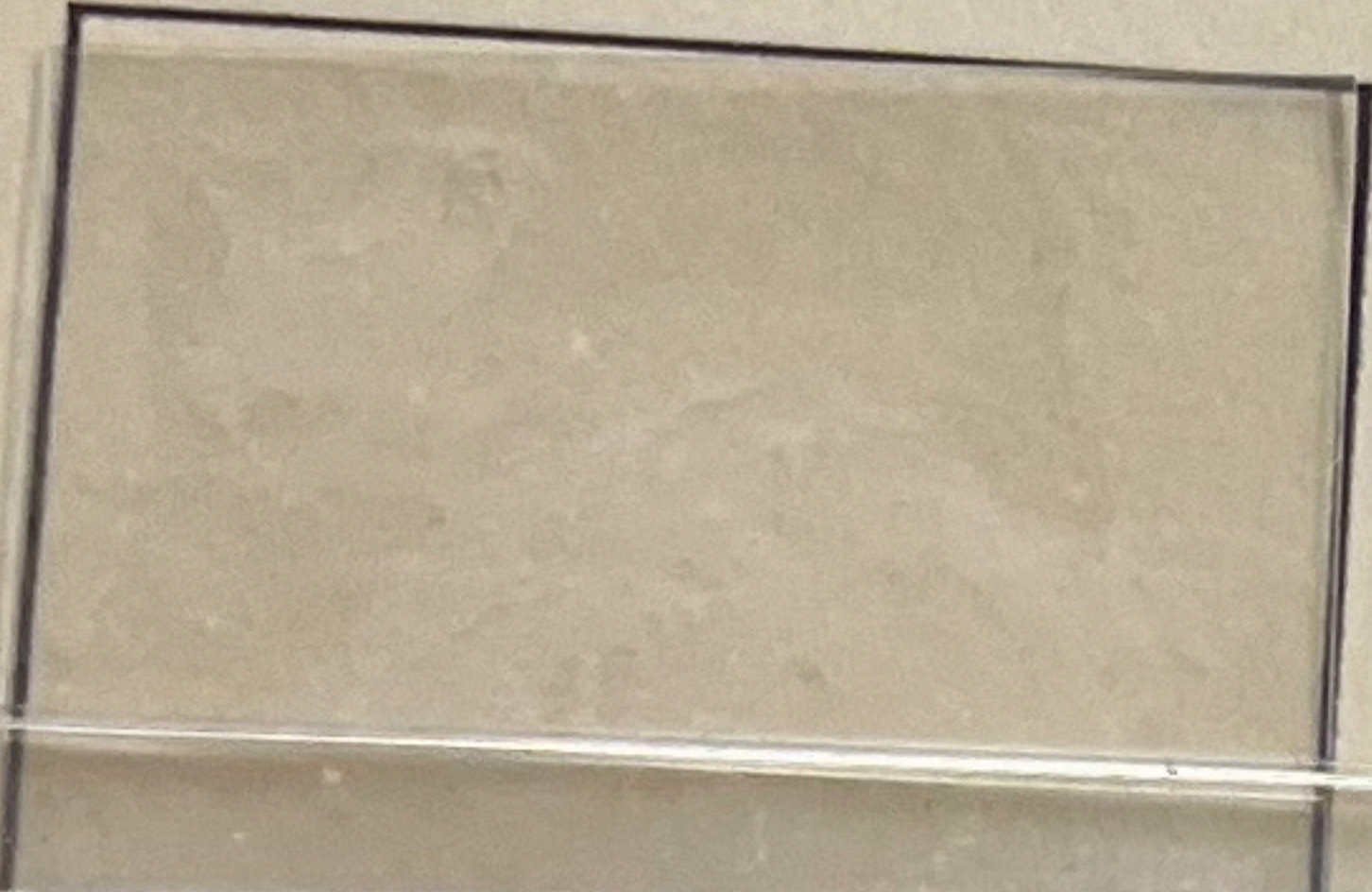
1846 1/- Green  
OP in Red  
Embossed  
Silk Thread  
WWW1



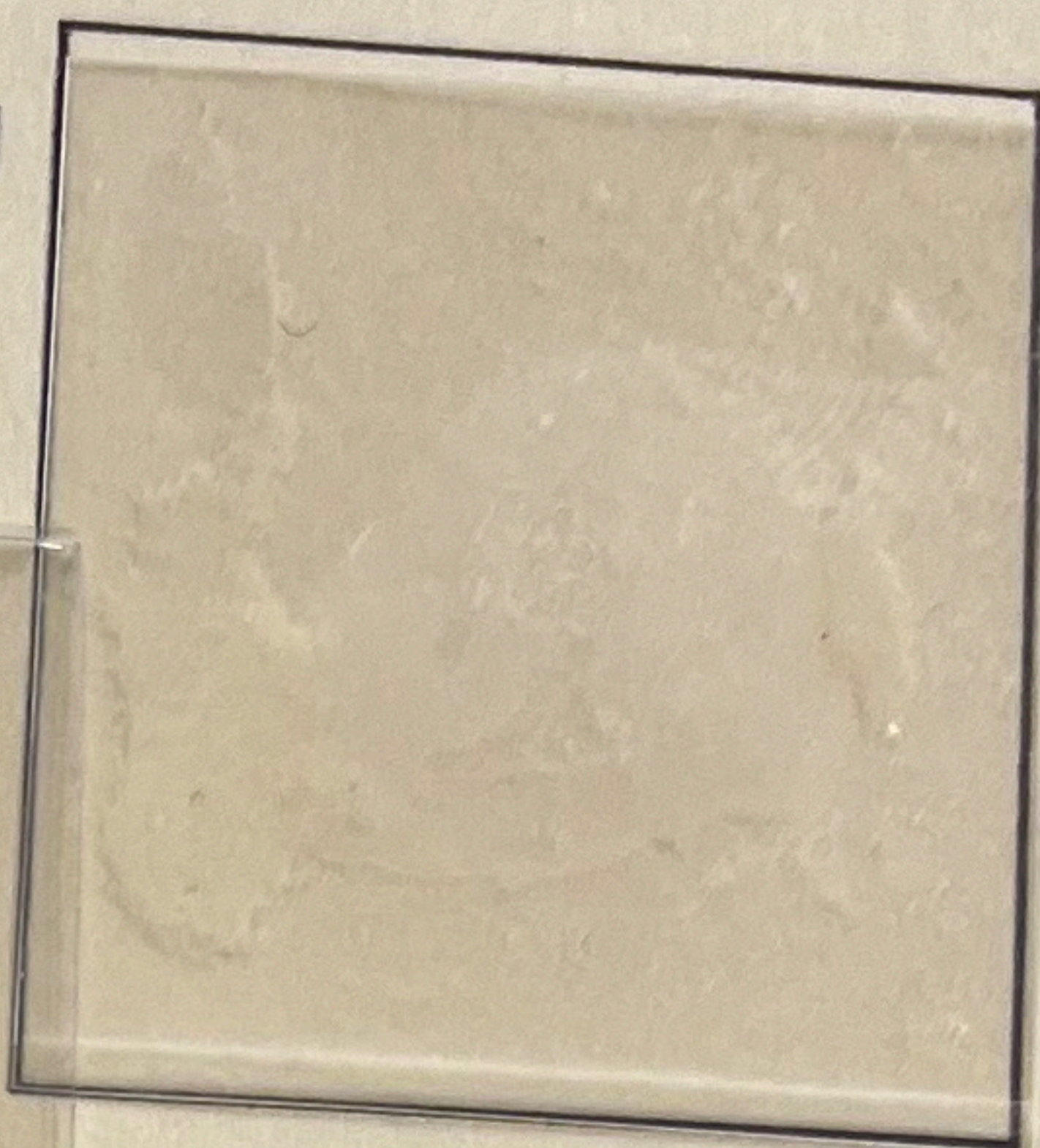
1846 1/- Green  
OP in Black  
Embossed  
Silk Thread  
WWW1

PT

Type 1



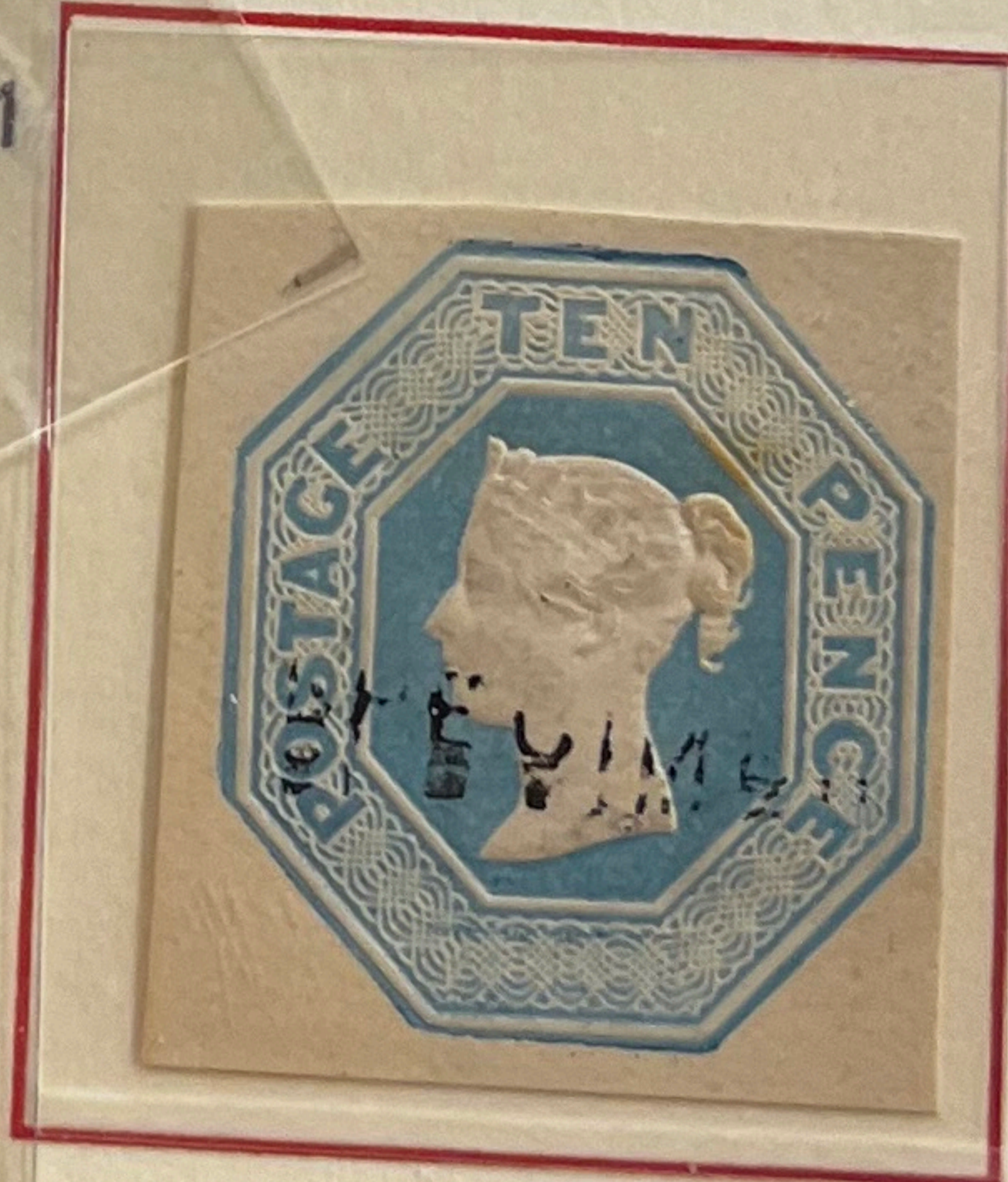
Type 1



1854 6d Mauve  
Embossed  
VR



Type 11



1890 Telegraph  
10d Blue Die 5  
Embossed  
Buff Paper in Booklets  
Huggins TP56b

TYPE 10