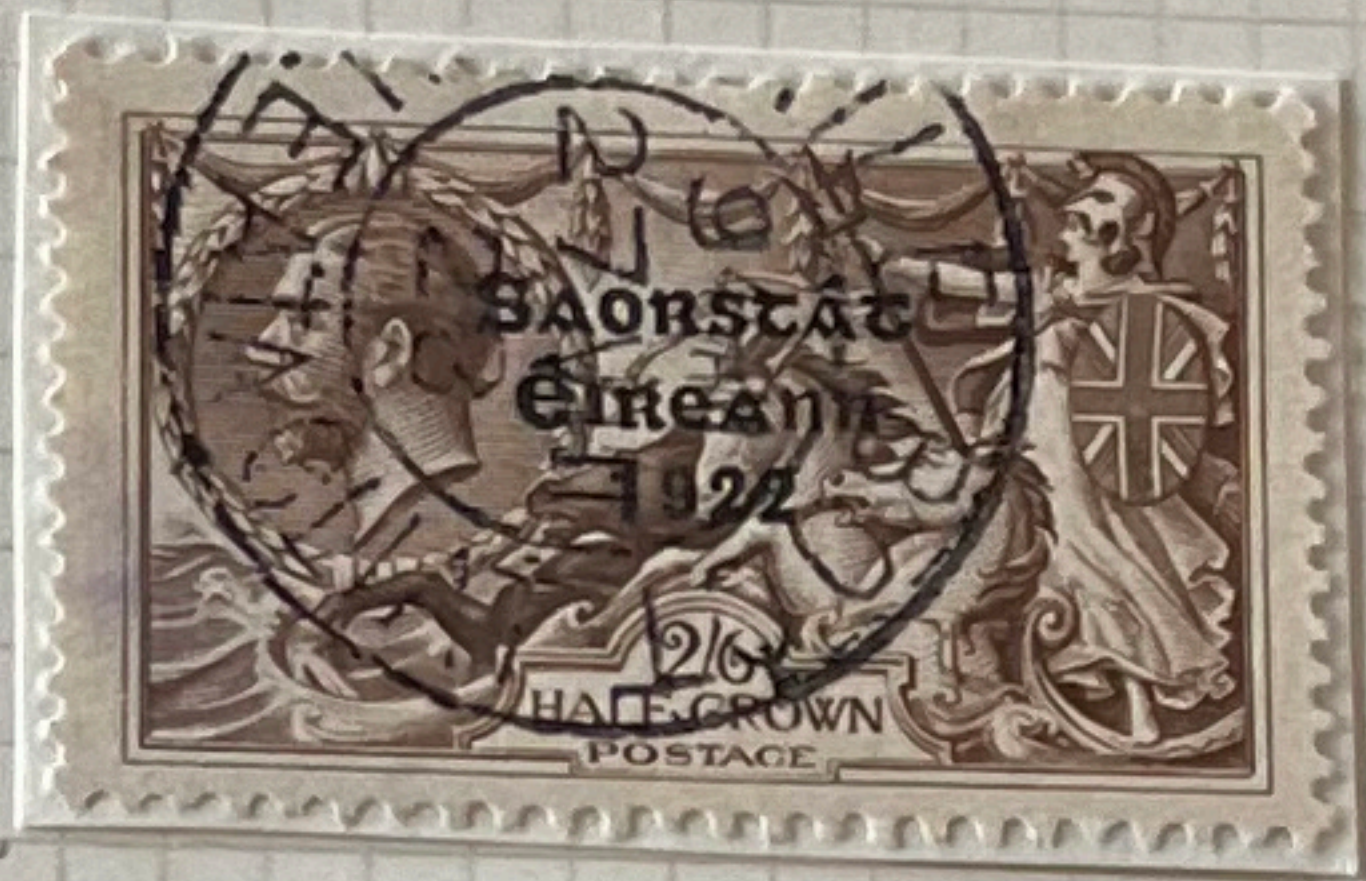


EVRE

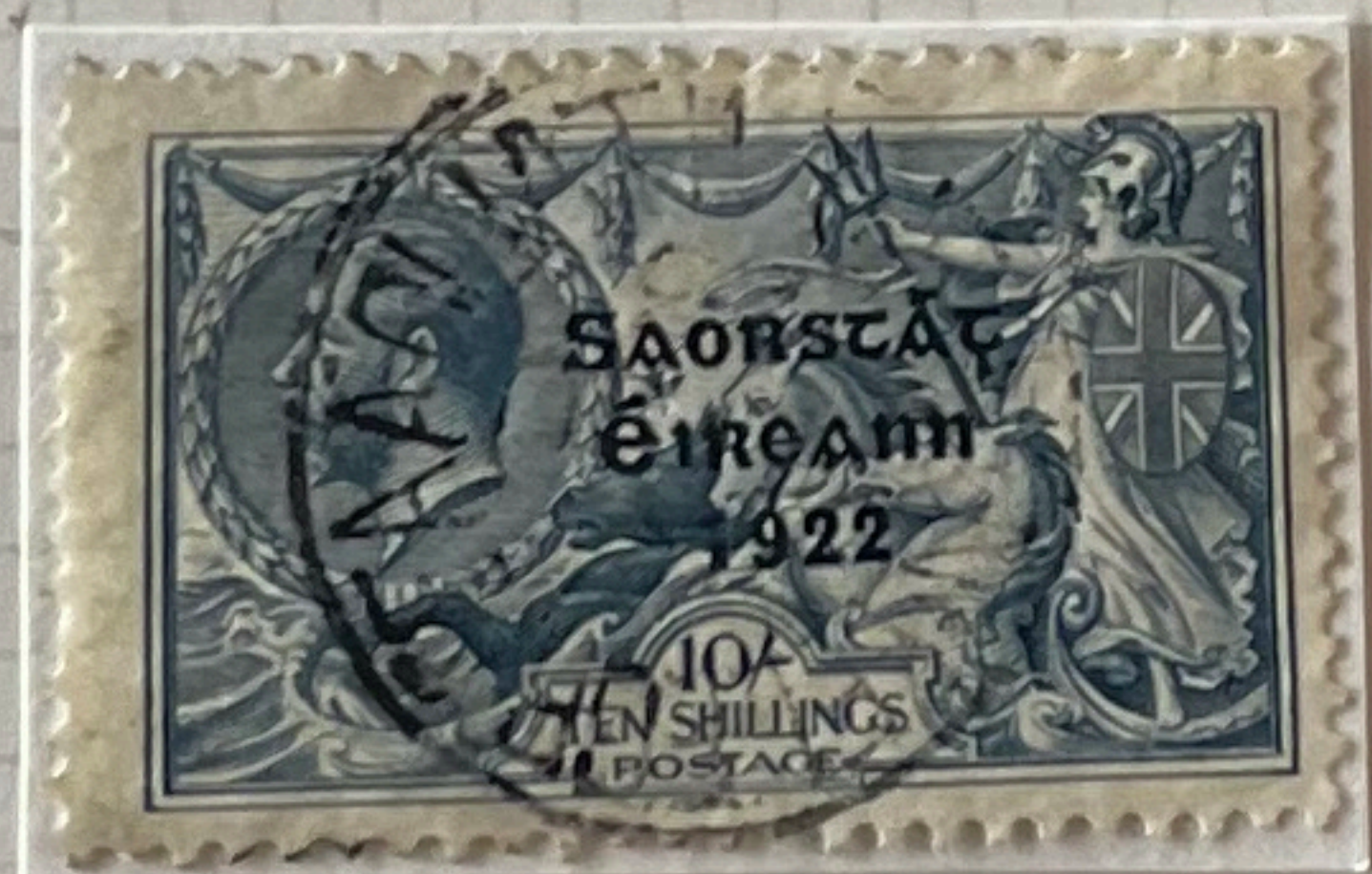
PCS-1



77b
DOT BETWEEN
S.O.A



57



58

Dull Black Acquisit WIDE

ÉIRE

PC5-2

IRISH FREE STATE
THOM THREE LINE OVERPRINT
DECEMBER 1922 - JANUARY 1923
HALF CROWN



HIBERNIAN T59
BOTTOM RIGHT

EVRE

PC5-3



ACCENT REVERSED

T 567

T 591

*accent
reversed*

EVRE

PC5-4

HOLLOW ACCENT
A & T BROKEN



RE ENTRY BOTTOM RIGHT
CORNER R 8/2

SA #776
JOINED
&
HAMMERED 9
V-42



#776 V-42
HAMMERED 9

#776 HAMMERED 9
V-42



FAINT ACCENT
NEEDLE EYE

1. A & T Broken, accent almost missing
2. Re-entry - missing line in cross
- 3, 4, 5, 6. Defective 9
- A5 Broken 9, Broken 7 - accent almost missing

ÉIRE

PCS-5

IRISH FREE STATE
THOM THREE LINE OVERPRINT
DECEMBER 1922 - JANUARY 1923
FIVE SHILLINGS



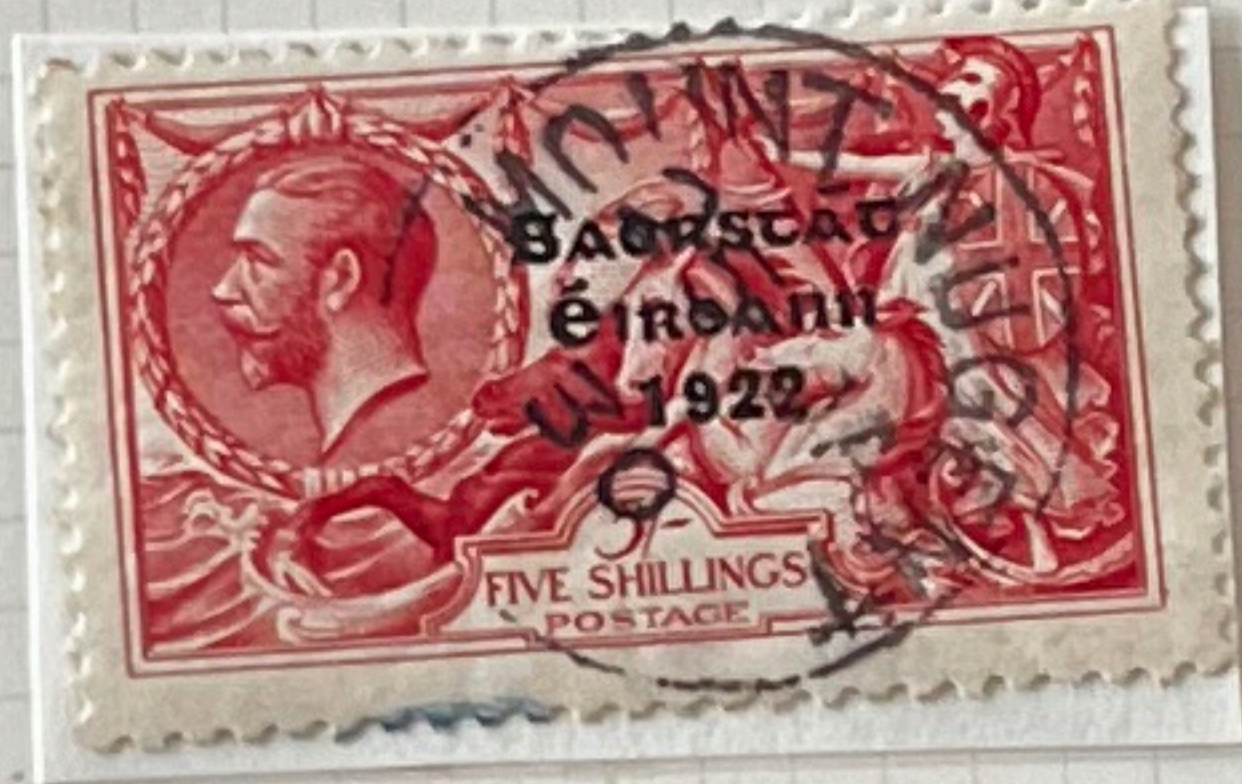
786
JOINED SA



EVRE

PC5-6

SPLIT HELMET
LINE ↓



ACCENT
REVERSED
T601

Accent
Reversed

EVRE

PL5-9

BROKEN HELMUT LINE

SPLIT HELMET LINE

HAMMERED 9



BROKEN HELMUT LINE

HAMMERED 9

T60g, T69, T70, T73



CIRCUMFLEX ACCENT

T73c

T73c

- 1. Broken 9 } HAMMERED 9
- 2. Broken 9, Broken E }
- 3. Accent on Top Left Stamp

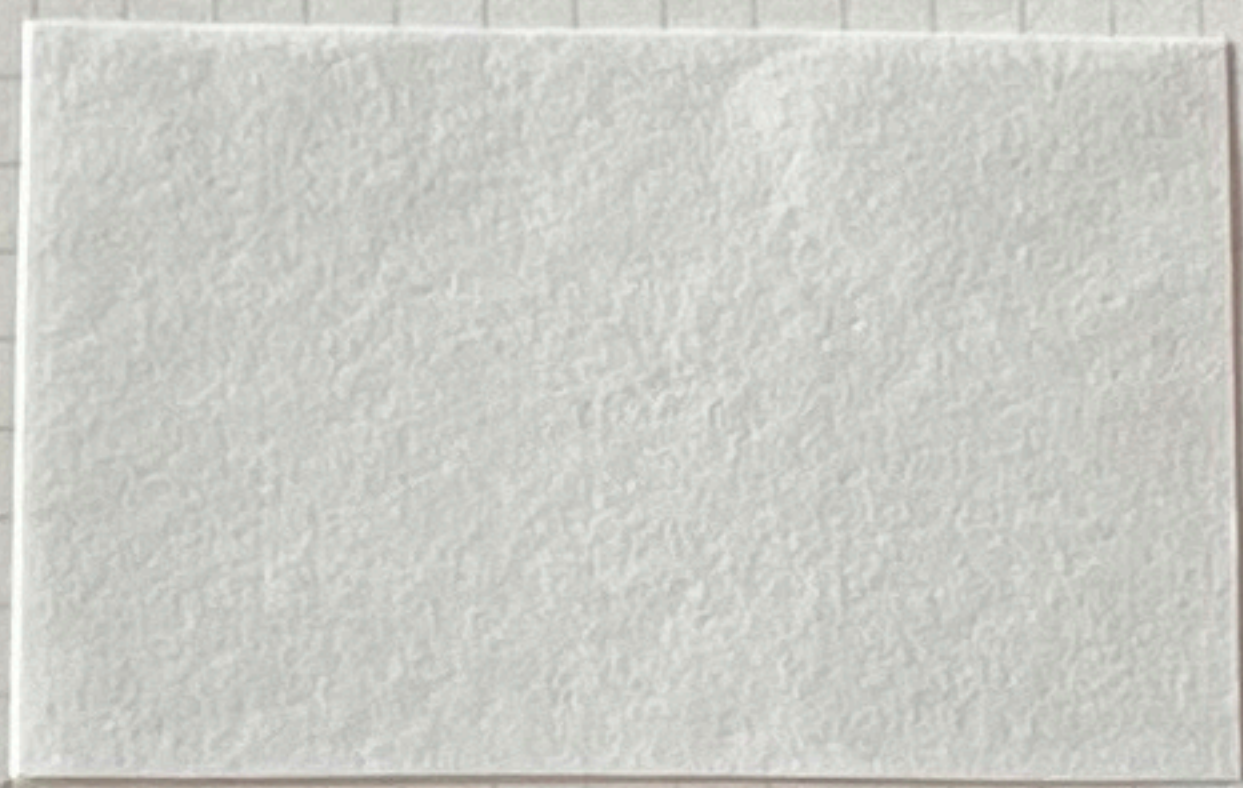
CIRCUMFLEX ACCENT #786

SCOTT'S #787 #786 SMALL DOT BETWEEN S.A

ÉIRE

PL5-8

IRISH FREE STATE
THOM THREE LINE OVERPRINT
DECEMBER 1922 - JANUARY 1923
TEN SHILLINGS



EVRE

P25-9

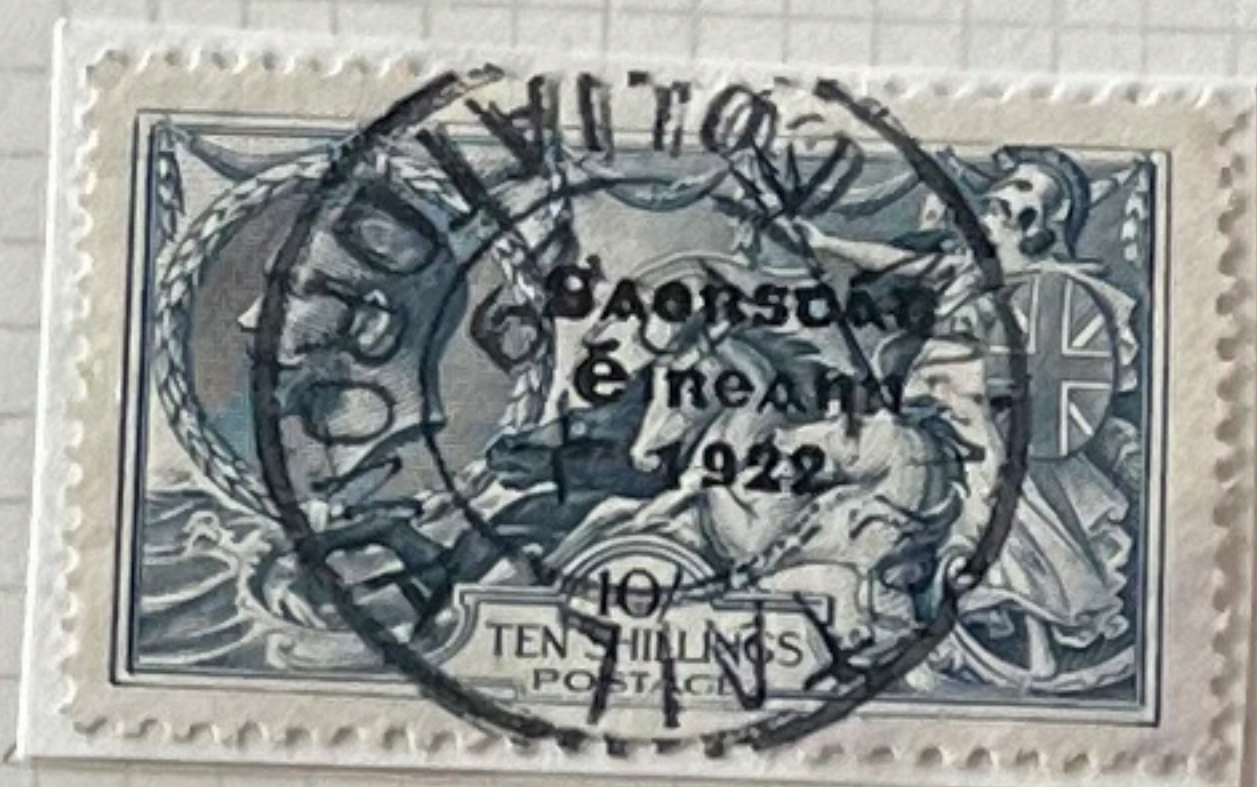


ACCENT REVERSED
OR Flat
T74b.

Accent
Revered E 4500 = \$ 6435.-

EVRE

PC5-10



79 &
HAMMERED 9
T74c?



58
← BLOTTED A
& ACCENT
TOUCHING A

HOLLOW
ACCENT →
NEEDLE
EYE



HOLLOW
← ACCENT
NEEDLE EYE

1. BEICON FRAME TOP LEFT
2. RE-ENTRY RIGHT + ACCENT VARIETY
3. 11 BEICON ACCENT

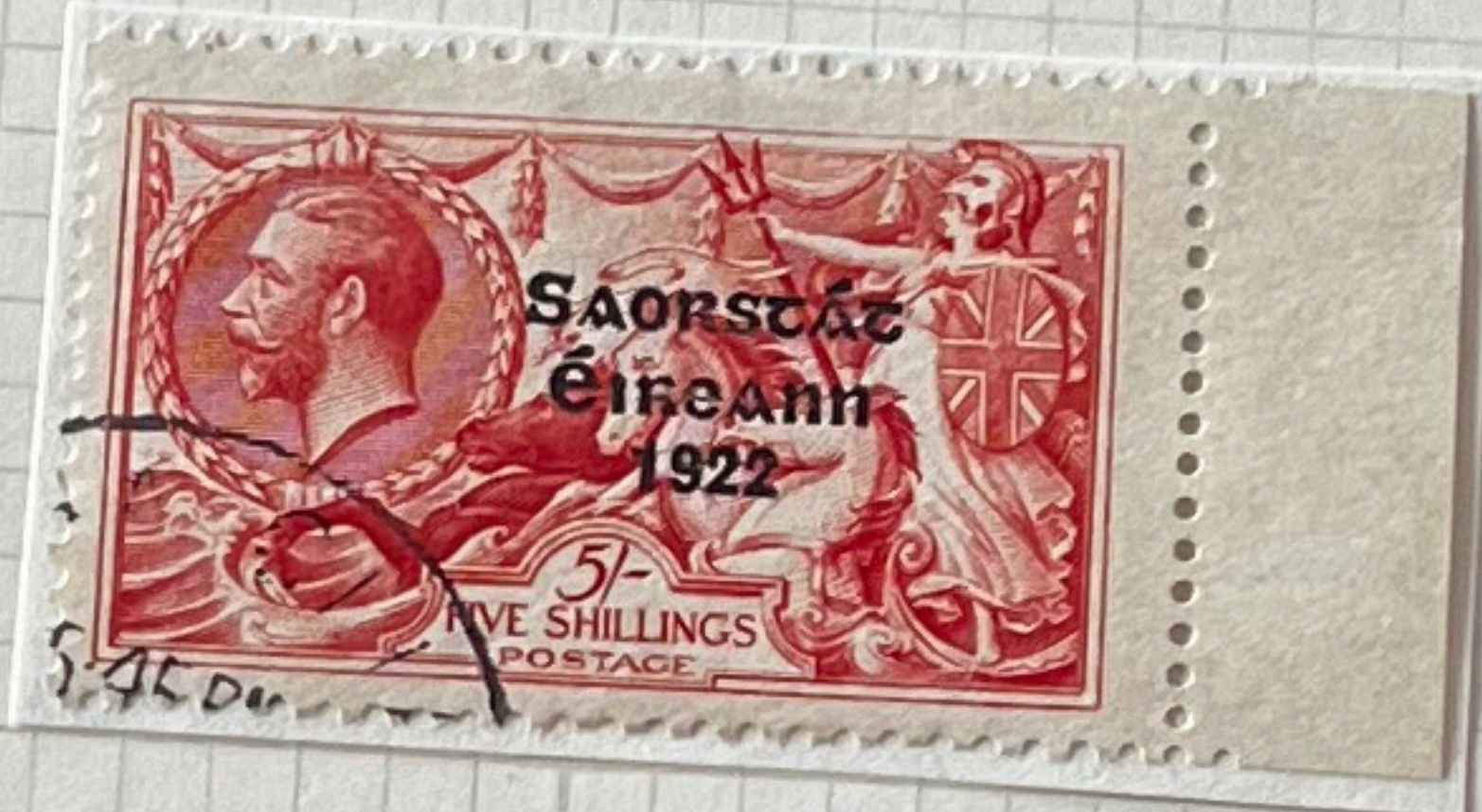
EVRE

PC5-25

IRISH FREE STATE
DUBLIN CASTLE THREE LINE OVERPRINT
NARROW SETTING OF DATE
AUGUST 1925

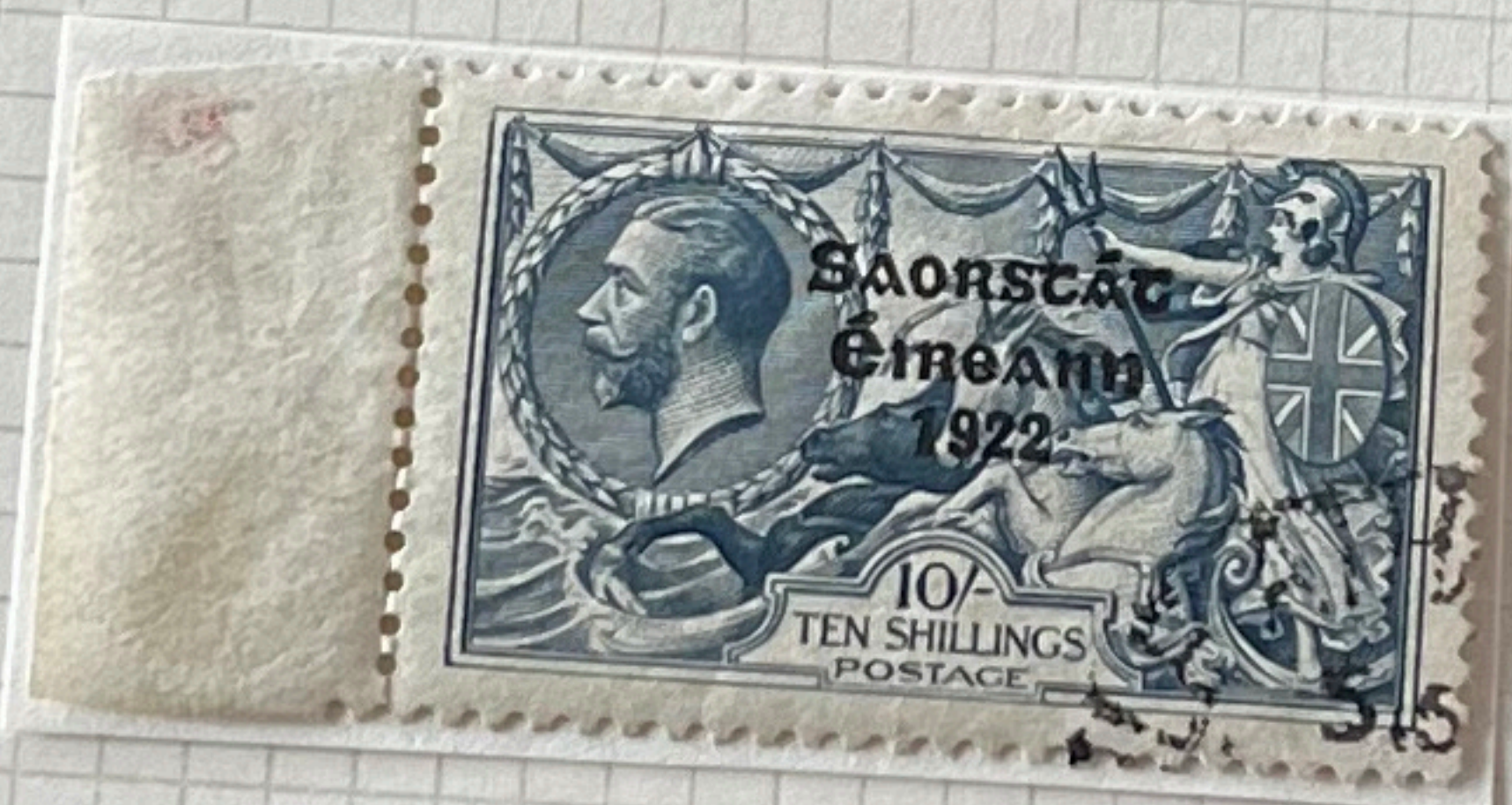


NEEDLE EYE
HOLLOW ACCENT
T59?



2 BROKEN 'R'
JOINED 92
T60?

HOLLOW NEEDLE EYE
ACCENT IN
FIRST e



T61
BROKEN 'S'

EVRE

PC5-26

IRISH FREE STATE
DUBLIN CASTLE THREE LINE OVERPRINT
NARROW SETTING OF DATE
AUGUST 1925
HALF CROWN

NEEDLE EYE ACCENT
& HOLLOW FINAL T



HOLLOW ACCENT
R 6/4 NEEDLE EYE

EVRE

PC5-27

IRISH FREE STATE
DUBLIN CASTLE THREE LINE OVERPRINT
NARROW SETTING OF DATE
AUGUST 1925
FIVE SHILLINGS



EVRE

PC5-28

IRISH FREE STATE
DUBLIN CASTLE THREE LINE OVERPRINT
NARROW SETTING OF DATE
AUGUST 1925
TEN SHILLINGS

BROKEN 'S' →
IN POSTAGE



JOINED 22

ACCENT DOUBLE ?
↑ REVERSED

T68

enre

PC5-29

IRISH FREE STATE
DUBLIN CASTLE THREE LINE OVERPRINT
WIDE AND NARROW SETTING
MAY/JUNE 1927

HOLLOW ACCENT →



← COMPOSITE PAIRS

N

W

Row 1/2



Row 1/3

← HOLLOW ACCENT NEEDLE EYE

W

N

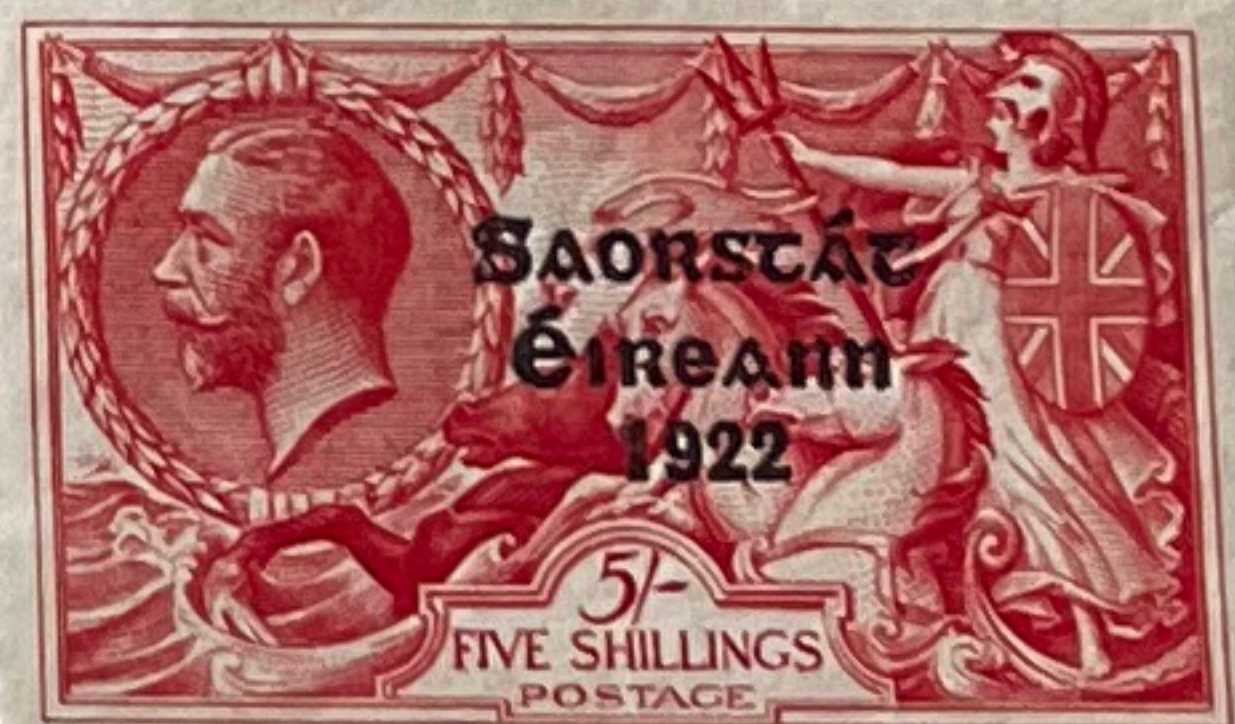
Row 6/1

N

INVERTED
T
OUTER FRAME

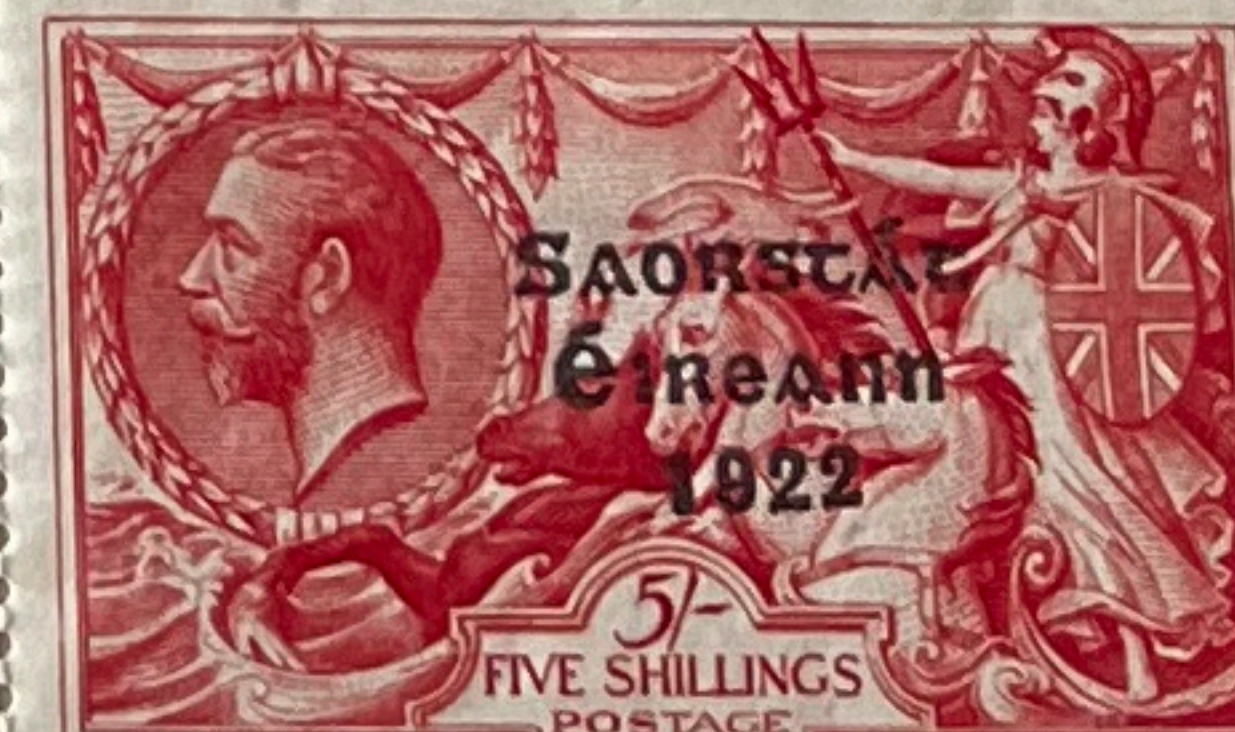
Row 7/1

W



N

Row 6/1



W

Row 7/1

← COMPOSITE PAIRS

ÉIRE

PCS-30

IRISH FREE STATE
DUBLIN CASTLE THREE LINE OVERPRINT
WIDE SETTING OF DATE
1927 - 1928



#93 WATERLOW REENGRAVED
1935
DOT BETWEEN S-A
T75



BROKEN S PLATE
overprint

PERFECT S PLATE
overprint

ÉIRE

PC5-31



WIDE DATE
 +
 BROKEN R
 PLATE

EVRE

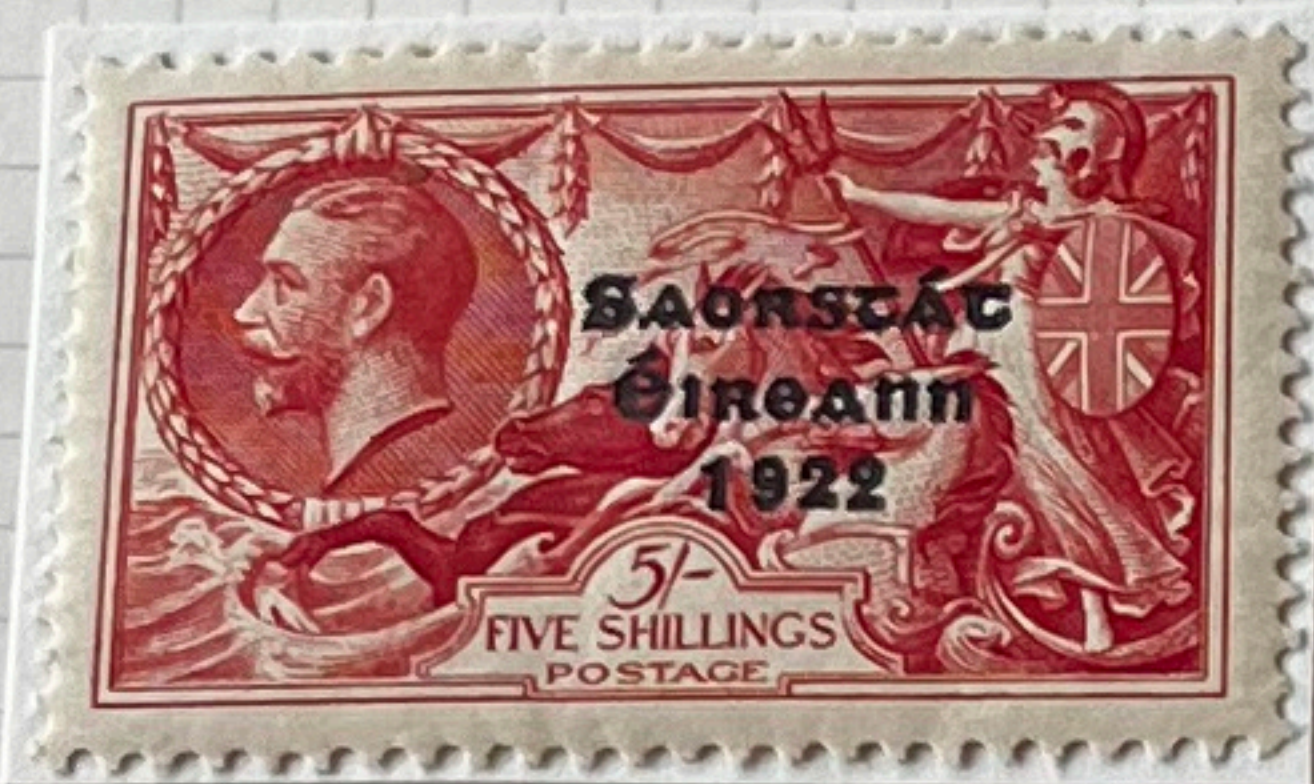
PC5-32

WATERLOW
REENGRAVED



ACCENT
REVERSED
T75 a or b

DOT BETWEEN
SA



JOINED SA



JOINED SA

Cancelled
and
Uncancelled SA