

PRINTED MATTER  
BRITISH EMPIRE

TO CANADA

NICOSIA  
26 JA 45 (TYPE 19) TO  
TORONTO, ONT.  
CANADA

1/2 pi PAYS

Printed Paper Rate.



IF UNDELIVERED PLEASE RETURN TO :-  
KEGHAM S. BIZDIKIAN  
P.O. BOX NO. 220  
NICOSIA, CYPRUS.

Messrs. Templetons Limited,

56

SPINNEY'S LIMITED, NICOSIA, CYPRUS.



( America. )

NICOSIA  
21 NO 48 (TYPE 19A) TO  
LONDON, N.2,  
ENGLAND

1/2 pi PAYS  
SINGLE RATE

Mrs. N.M. Gent,  
18, Widecombe Way,  
Hampstead Garden,  
Suburb,  
LONDON, N.2.

PRINTED MATTER



Mr.  
F. Pearson  
Albion House  
6 ALBION TERRACE  
RIPON  
England Yorkshire

INCREASED  
RATE  
TO ENGLAND

FAMAGUSTA  
1 AUG 49 (TYPE 19) TO  
RIPON,  
YORKSHIRE,  
ENGLAND

4 x 1/4 pi PAY  
THE INCREASED  
SINGLE RATE

**NEWSPAPERS  
EMPIRE**

**NEWSPAPER RATE - EMPIRE**

Effective as of:	Per 4 oz.	Per 2 oz.
12th May, 1938	.5 Piastre	
1st January, 1941		.5 Piastre
18th June, 1949		1 Piastre

**UNUSUAL DESTINATION  
— KENYA**

**PAPHOS** 28 NO 40 (TYPE 19) TO **NAIROBI, KENYA**

½ pi PAYS EMPIRE NEWSPAPER RATE FOR 2 oz..

NOTE THE "PASSED CENSOR CYPRUS/25"

**DIFFERENT TREATMENTS FOR  
SIMILAR ITEMS IN THE SAME PERIOD**

**CENSORED EGYPT NOT CYPRUS**

**NICOSIA** 23 SP 44 (TYPE 19B)

TO **CAIRO, EGYPT**

½ pi PAYS FOREIGN NEWSPAPER RATE FOR 2 oz.

NOTE THE ENCIRCLED EGYPTIAN CENSORSHIP MARK IN BLACK ON THE BACK



**CENSORED EGYPT AND CYPRUS  
THIRD STAGE OF CENSORSHIP**

**NICOSIA** OC 5 44 (TYPE 19B)

TO **CAIRO, EGYPT**

½ pi PAYS FOREIGN NEWSPAPER RATE FOR 2 oz.

**NOTE THE THIRD STAGE OCTAGONAL CROWN M/4 CYPRUS CENSOR MARK (TYPE C-3)**

THE ENCIRCLED IBIS EGYPTIAN CENSOR MARKS



# POST CARD

CARTE POSTALE

Communication—Correspondance

Address—Adresse



29 Jan. 1938  
Handwritten message in Greek script, partially obscured by the stamp and address.

Madame  
H. Der Mikaelian  
66 Rue Ramses  
Heliopolis  
Le Caire  
Egypte

## POST CARD BRITISH EMPIRE

### POST CARD RATE - EMPIRE

Effective as of:  
12th May, 1938                      1 Piastre  
1st January 1941                    1.5 Piastres

**PEDHOULAS**  
30 JY 38 (TYPE 19) TO  
**LE CAIRE (CAIRO)**  
**EGYPT**

1 pi PAYS THE EMPIRE  
POST CARD RATE.

THE REVERSE SHOWS  
"VIEW OF PEDHOULAS"

RATE RISES TO 1½ pi.

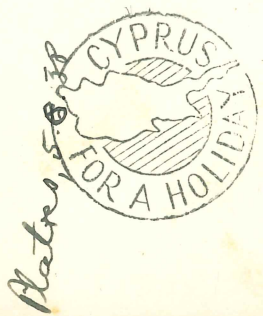
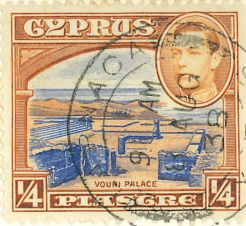
**LARNACA**  
8 AUG 38 (TYPE 19) TO  
**TEL AVIV, PALESTINE**

¾ pi + ½ pi + ¼ pi PAY THE NEW  
EMPIRE POST CARD RATE.

NOTE:  
"CYPRUS FOR A HOLIDAY"  
PUBLICITY HANDSTAMP  
(TYPE H-2)

THE REVERSE SHOWS A MOUNTAIN  
RESORT SCENE FROM THE  
PLATRES AREA

Viele herzliche Grüsse  
von  
Heinrich



Mr.  
A. U. Meller  
% Anglo Palestine Bank  
TEL-AVIV  
PALESTINE

# POST CARD

Printed in Germany  
Copyright by Mangolian Press, Nicosia (Cyprus).



Handwritten message in German script, partially obscured by the stamp and address.

Mr.  
Moktar  
Ministry of Education  
Dep. of Phys. Education  
Le Caire  
EGYPT

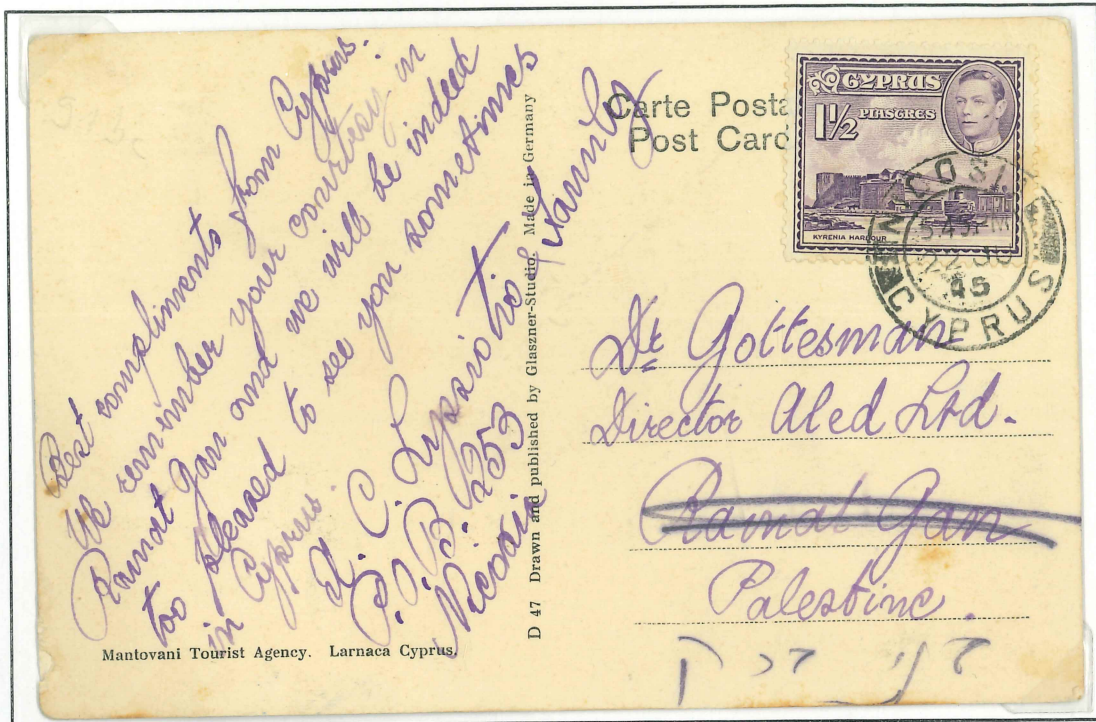
**NICOSIA**  
20 FEB 39 (TYPE 19) TO  
**LE CAIRE (CAIRO)**  
**EGYPT**

1 ½ pi PAYS THE  
EMPIRE POST CARD RATE.

NOTE:  
CARD IS SIGNED BY  
THE HUNGARIAN  
UNIVERSITY TEAM

THE REVERSE SHOWS  
"KYRENIA HARBOUR (CYPRUS)"

PICTURE POST CARDS – CYPRUS SCENES



**NICOSIA** 22 JU 45 (TYPE 19B) TO **RAMAT GAN, PALESTINE**

1½ pi PAYS THE EMPIRE POST CARD RATE

NOTE: RE-DIRECTED FROM ORIGINAL DESTINATION BY  
HAND-WRITTEN NOTATION, IN HEBREW

THE REVERSE SHOWS A COLOUR REPRODUCTION OF THE ENTRANCE TO PLATRES



**PLATRES** 27 JY 46 (TYPE 19A) TO **PALESTINE**

½ pi + 1 pi PAY THE EMPIRE POST CARD RATE

(TYPE 19A IS NOT LISTED AS BEING USED AT PLATRES, IN CASTLE)

THE REVERSE IS A BLACK AND WHITE PHOTO-STYLE PICTURE OF CALEDONIA FALLS, PLATRES

Prodromos Berengaria Hotel  
14-8-47 **CYPRUS POST CARD**

CORRESPONDENCE

ADDRESS



Chers Amis

Nous sommes sur les montagnes embaumées de Chypre. Le pays est féerique et nous pensons tous les trois à vous tous affectueusement  
George & Marica Moazzo.

M<sup>rs</sup> M<sup>me</sup> St. Maurer  
Santa Clara Avenue  
Royal Oak R.R.  
Elk Lake  
Vancouver Island  
British Columbia  
Canada

Visit Cyprus through "LOUIS TOURIST AGENCY"  
Head Office: Limassol, Cyprus

Copyright Photo by EDWARDS STUDIO, Limassol, Cyprus

POST CARD  
BRITISH EMPIRE

TWO COLOURS OF  
THE 1/2 PIASTRES

**PRODHROMOS**  
17 AUG 47 (TYPE 7) TO  
**ELK LAKE, B. C.  
CANADA**

1/2 pi PAYS THE EMPIRE POST  
CARD RATE  
THE REVERSE SHOWS "BELLA-  
PAISE ABBEY, KYRENIA, CY-  
PRUS"

**KYRENIA**  
6 SEP 51 (TYPE 19) TO  
**ROCHDALE, LANCS.,  
ENGLAND**  
1/2 pi PAYS THE EMPIRE  
POST CARD RATE  
THE REVERSE SHOWS  
"KYRENIA CASTLE - CY-  
PRUS"

**DOME HOTEL  
KYRENIA  
CYPRUS  
14-9-51.**

Dear Vera & John - Silena & I came just  
shocked our 14 days holiday here arriving  
yesterday in a terribly quiet &  
peaceful after Cairo & having a bit of  
getting used to. Hoping to return to  
start our tour of the island. We were  
getting a Maria 10hp. car. At the weekend  
we are being entertained by some friend  
of Silena who lives here & apparently  
some of the British navy who are  
arriving on Saturday. So hoping to have  
a good time. Food & Hotel excellent &  
swimming in the Mediterranean just  
marvellous. Yours or ever  
Silena



**MR & MRS J. HENEGHAN**  
30 COLD WALK STREET  
**ROCHDALE  
LANCS.  
ENGLAND**

Raphael Tuck & Sons Ltd.  
FINE ART PUBLISHERS BY APPOINTMENT TO THE LATE KING GEORGE VI,  
H.M. QUEEN ELIZABETH THE QUEEN MOTHER AND H.M. QUEEN MARY



**TUCK'S POST CAR**

CARTE

POSTALE



FOR ADDRESS

**Ms C. V. J. Darguhanson,**  
62 Cromwell Rd.,  
Aberdeen,  
Scotland  
24/5/54

On my way to the...  
I am at 62, St. Paul's  
its great name...  
I am at 62, St. Paul's  
its great name...  
I am at 62, St. Paul's  
its great name...

**NICOSIA S. B. O.**  
25 MAY 54 (TYPE 19C) TO  
**ABERDEEN,  
SCOTLAND**

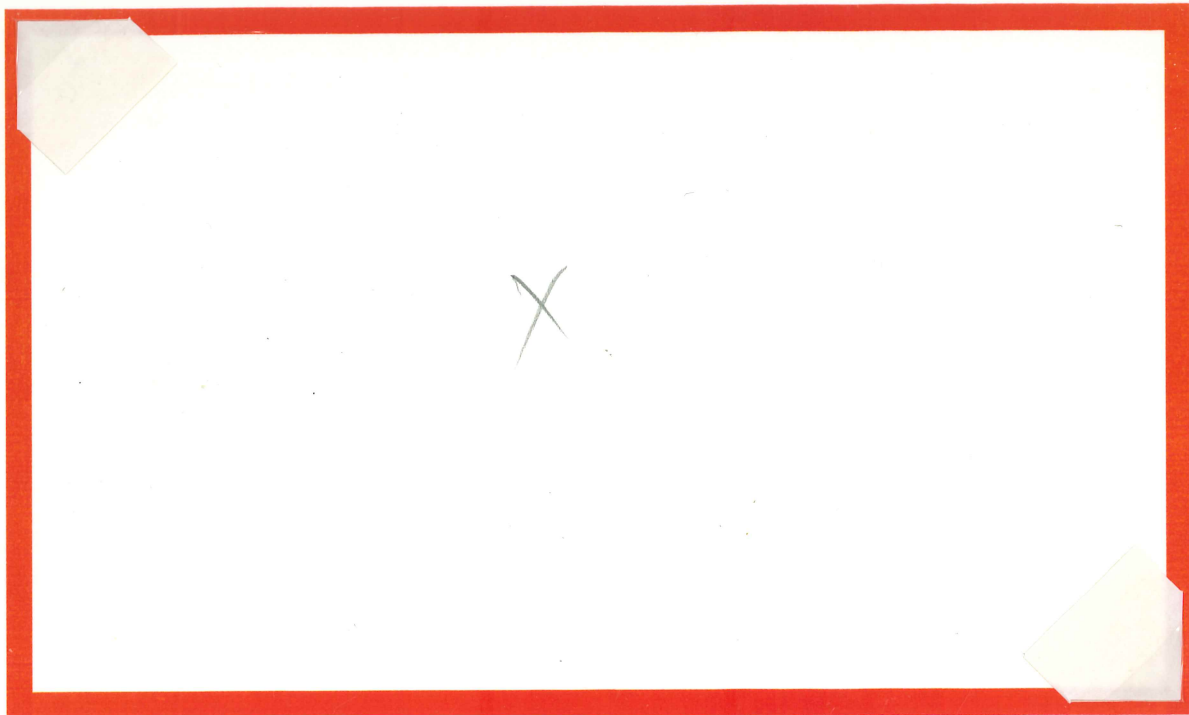
1/2 pi PAYS THE EMPIRE  
POST CARD RATE  
THE REVERSE SHOWS  
"LEDRA PALACE HOTEL -  
NICOSIA CYPRUS"

PRIVATE FIRST DAY OF ISSUE MAIL  
TO EXOTIC DESTINATION

FIRST CLASS RATE - EMPIRE		
Effective as of:	First oz.	Add'l oz.
12th May, 1938	1.5 Piastre	1 Piastre
1st January, 1941	2 Piastres	1.5 Piastre

**SURFACE MAIL  
BRITISH EMPIRE**

DOUBLE WEIGHT TO FIJI



**LIMASSOL** 12 MAY 38 (TYPE 19) TO **SUVA, FIJI**

1 pi + 3/4 pi + 1/2 pi + 1/4 pi PAY THE DOUBLE RATE

THE REVERSE SHOWS A 15 MA 38 PORT SAID TRAFFIC CANCEL AS A TRANSIT MARK  
NOTE THE PARTIAL "CYPRUS FOR A HOLIDAY" PUBLICITY HANDSTAMP



REGULAR SERVICE  
TO PALESTINE

**NICOSIA**  
18 JUN 38  
(TYPE 19)  
TO

**BENEI BERAK,  
(BNEI BRAK)  
PALESTINE**

1 1/2 pi PAYS  
SINGLE EMPIRE RATE

NOTE THE PUBLICITY  
HANDSTAMP  
"CYPRUS FOR A HOLIDAY"  
TYPE H-1

THE REVERSE SHOWS A  
BNEI BRAK  
12 JU 38 C. D. S.  
AS RECEIVER

## EARLY MAIL TO ENGLAND

SURFACE MAIL  
BRITISH EMPIRE**TROODOS**27 AU 38  
(TYPE 19) TO**LONDON, N. 16  
ENGLAND**½ pi + 1 pi PAY  
SINGLE EMPIRE RATE

## SCARCE DESTINATION—WEST AUSTRALIA

**NICOSIA**  
14 JAN 39 (TYPE 19) TO  
**TREOSVILLE,  
WEST AUSTRALIA**1½ pi PAYS  
THE SINGLE EMPIRE RATENOTE STRIKE OF  
"CYPRUS ORANGES"  
PUBLICITY HANDSTAMP  
(TYPE O-1)15 JAN 39 PORT SAID  
MACHINE CANCEL  
TRANSIT MARK  
ON THE REVERSE

4-11  
SURFACE MAIL  
BRITISH EMPIRE

THREE DAYS  
PRIOR TO  
START OF  
CENSORSHIP

PLATRES

27 AU 39  
(TYPE 19) TO

TEL AVIV  
PALESTINE

1 pi + 2 x ¼ pi PAY THE  
SINGLE EMPIRE RATE

CENSORSHIP CAME  
INTO EFFECT ON  
AUGUST 30, 1939

M<sup>rs</sup>  
Martha Goldschmidt

Tel-Aviv

Mr. Gordon Fo

Palastine



### CENSORED MAIL - EARLY TYPE MARKINGS

EARLY USE OF TYPE C-1  
CENSOR MARK ON  
OUT-GOING MAIL  
(1st RECORDED DATE  
AUGUST 30, 1939)

NICOSIA

8 SEP 39 (TYPE 19) TO

LONDON,  
ENGLAND

1½ pi PAYS  
SINGLE EMPIRE RATE

NOTE "PASSED CENSOR"  
MARK (TYPE C-1 LARGE)  
AND PUBLICITY  
HANDSTAMP  
"CYPRUS FOR A HOLIDAY"  
(TYPE H-1)

PASSED  
CENSOR



Mr. & Mrs. S. A. Karachian

167, Westbourne Park Road,

Bayswater

London W 11.

England

# EARLIEST RECORDED SECOND STAGE CENSOR MARK (TYPE C-2)

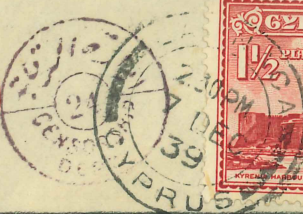
**SURFACE MAIL  
BRITISH EMPIRE**

FOUR DAYS EARLIER  
THAN PREVIOUS  
"EARLIEST OUTBOUND  
DATE". MORE CON-  
TROL WAS ACHIEVED BY  
USING NUMBERED  
HANDSTAMPS ASSIGNED  
TO  
SPECIFIC CENSORS

**OTTOMAN BANK**

P. O. Box No 108  
Teleph. No 22  
LARNACA (CYPRUS)

WRITTEN IN ENGLISH.  
                   FRENCH.



**LARNACA**  
7 DEC 39  
(TYPE 19) TO  
**CAIRO, EGYPT**

1 1/2 pi PAYS  
SINGLE EMPIRE RATE

NOTE  
"PASSED CENSOR  
CYPRUS/7" MARK  
(TYPE C-2)  
AND EGYPTIAN  
CENSOR MARK

THE REVERSE SHOWS  
CAIRO DEC 12  
MACHINE CANCEL  
AS RECEIVER

# EARLY USE OF CENSOR NUMBER 8

**EARLIEST  
RECORDED  
USE OF TYPE C-2  
CENSOR MARK #8 ON  
OUT-GOING MAIL**

**NICOSIA**  
8 DEC 39  
(TYPE 19) TO  
**PRESTON,  
ENGLAND**

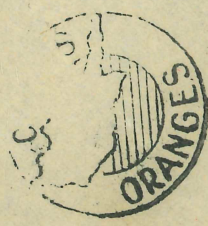
1 1/2 pi PAYS  
SINGLE EMPIRE RATE

NOTE  
"PASSED CENSOR  
CYPRUS/8" MARK  
(TYPE C-2)  
AND PUBLICITY  
HANDSTAMP  
"CYPRUS ORANGES"  
(TYPE O-1)



**LYSSIOTIS FRERES**  
CYPRUS

LETTER IN ENGLISH.



Messrs:

VERNON & CO. LTD.

Penwortham Mills,

PRESTON, England.

VERY EARLY USE OF SECOND STAGE NUMBERED MARK

**SURFACE MAIL  
BRITISH EMPIRE**

**CENSOR  
NUMBER 10**

**WITHIN FOUR  
DAYS OF EARLIEST  
USE OF NUMBER 10**

**NICOSIA**

13 DEC 39  
(TYPE 19)  
TO

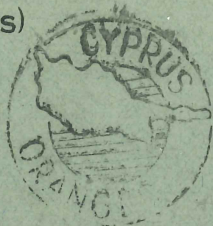
**LONDON,  
ENGLAND**

2½ pi PAYS  
DOUBLE EMPIRE RATE  
(1½ pi FOR 1st OUNCE,  
1 pi FOR SECOND.)

NOTE  
"PASSED CENSOR  
CYPRUS/10"  
MARK (TYPE C-2)  
AND PUBLICITY HAND-  
STAMP  
"CYPRUS ORANGES"  
(TYPE O-1)

**OTTOMAN BANK**

P. O. Box No. 83  
**NICOSIA (CYPRUS)**



**NICOSIA**

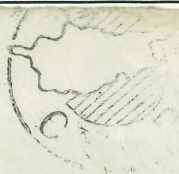
26 APR 40  
(TYPE 19)  
TO

**MADRAS,  
INDIA**

1½ pi PAYS  
SINGLE EMPIRE RATE

NOTE  
"PASSED CENSOR  
CYPRUS/7"  
MARK (TYPE C-2)  
AND PUBLICITY  
HANDSTAMP  
"VISIT CYPRUS"  
(TYPE V-2)

*English.*



*The Anupura Coffee Works Ltd.,  
Coimbatore,*

*(Madras),*

*India.*



STAPLES®

AIR MAIL

Weight  
Over  
.02.  
Insufficiently prepaid for  
transmission by Air Mail.  
Insufficiency attributable  
to insufficient transmission.



Mrs. W. Harris,

44 Orchard Ave.

Parkstone, Dorset

ENGLAND

OCT 6 51 OVER-SIZED ENVELOPE TO **DORSET, ENGLAND**. PAIR OF 1/2 p! PAYS DOUBLE RATE. NOTE BILINGUAL HANDSTAMP "INSUFFICIENTLY PREPAID FOR TRANSMISSION BY AIR MAIL."

NOT APPROVED FOR AIR MAIL SERVICE

SURFACE  
BRITISH EM