

SICILY  
1859

$\frac{1}{2}$  grano

Plate 1 - left pane - top right corner rounded



orange-yellow



orange



Plate 2 - small dot at lower right corner



orange

1 grano

Plate 2 - dash under chin



olive-brown



olive-green



Plate 3 - no dash - even print



olive-green



deep olive-green



SICILY

1859

An outer lettersheet sent from Messina to Termini (Palermo) in Sicily in March 1859. It is franked with a pair of ½ grano olive green stamps (plate 3).



SICILY

1859

2 grano

Plate 1 - upper right group - dot above nose

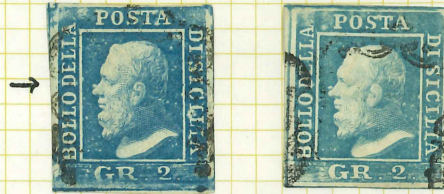


Plate 1 - lower groups - dot at forehead



Plate 3



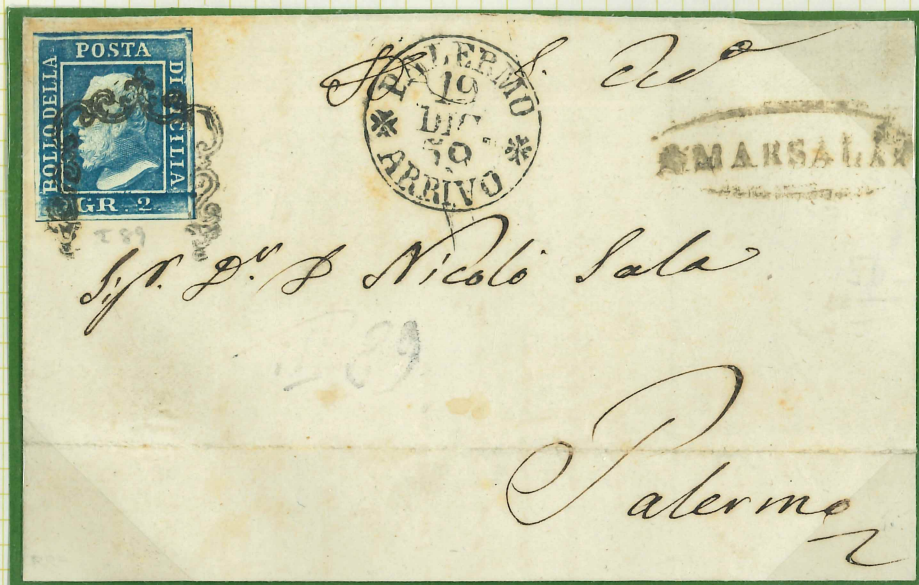
deep blue

SICILY

2 grano plate I (UR) stamps on entire

1859

Pale blue



1860

Dull blue



SICILY

2 grano plate III stamps on entire

1859

Pale blue



1860

Dull blue



SICILY  
1859

5 grano

Plate 1- dent in top right corner and spot above nose



rose-red

Plate 2- no dots or white spots - very even printing



orange-red

10 grano - one plate - indigo (shades)



worn plate

SICILY

1859

20 grano - one plate



slate-grey



slate

50 grano - one plate



chocolate

*only part*

# Italy.

1860.

SICILIA.



FROM LICATA (ON SOUTH COAST) TO PALERMO.

SENT 23RD. APRIL, RECEIVED PALERMO 25TH. APRIL

FRANKED 2 GRANI.

*R. Diena s.n.c.*  
*Crescentino 19, Roma*

2

11 dicembre 2003

Esaminato il francobollo di Sicilia, 1859, 1/2 grano, posizione  
della prima tavola, carta di Palermo, arancio (Cat.Sassone, N.  
, annullato, di cui è qui unita una riproduzione fotografica. A  
o parere, l'esemplare ha annullamento originale ed è perfetto:  
ho firmato "R.Diena". \* \* \* \* \*



*R. Diena*



*Fig. Don. Ryolo & C.*  
*Milazzo*

ITALIAN STATES  
Sperati Reproductions

Sicily



A



B



C



A



B



C



1



2



4



5

SICILY

A 50g brown-lake stamp "used" on a letter sheet in 1860.



It is unfortunately a fake as although the 50g stamp and the letter sheet are genuine, they do not belong together!

SICILY

Forgeries



SICILY

Reprints of an 1858 essay by Barone

