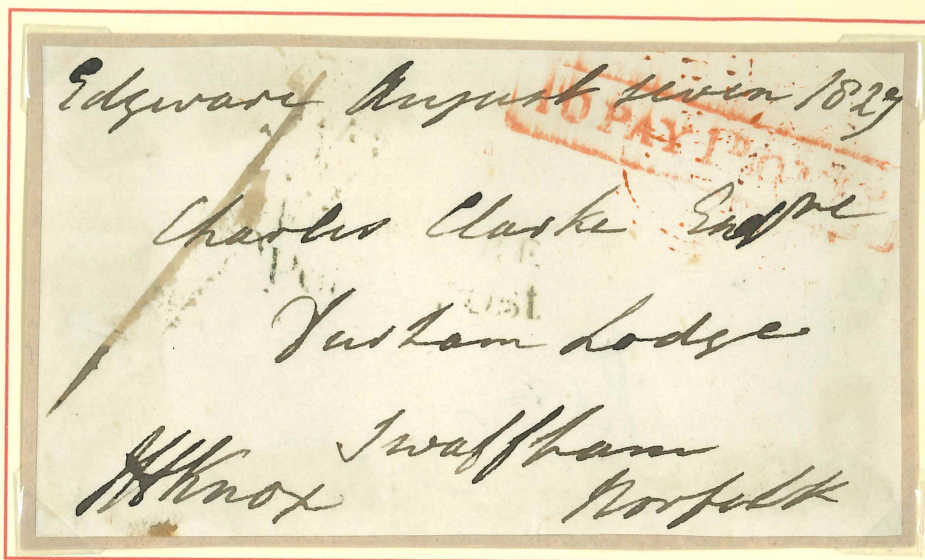


PERIOD PRIOR TO POSTAGE DUE STAMPS

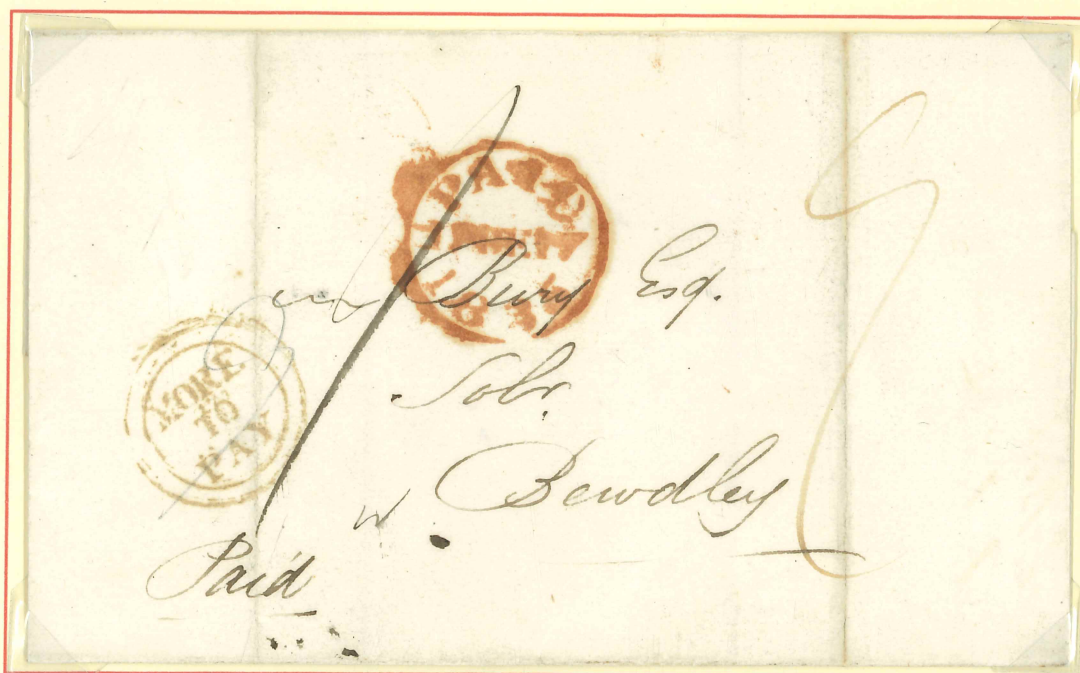
Even though prior to 1840 most letters were sent with postage paid by receiver, some had extra to pay.
These seem to be ones which were mispriced at point of origin.



* August Seven 1829 *.

Front only, Red Boxed Hand stamp "TO PAY POSTAGE".

This may have been attempt from Edgware to Swaffham to get a Free Frank as there is a signature bottom left.



17/11/1835

Wrapper to Bewdley with Brown Paid circle and a Black 1, indicating 1d Paid by sender.

However, the wrapper must of contained items as a "9" has been added.

This indicates 9d to pay with double ring light brown hand stamp "MORE TO PAY".

Infield Street Nov 4/29

Mrs Holloway

TO PAY
2d
ONLY

Regency Square
Brighton

Malton

Front of envelope dated
1829 to Brighton with
large "2" and large box
with "TO PAY 2d ONLY"

Not to be found

RECORDED
EXHIBIT
1845

L. L. Wells, Esq

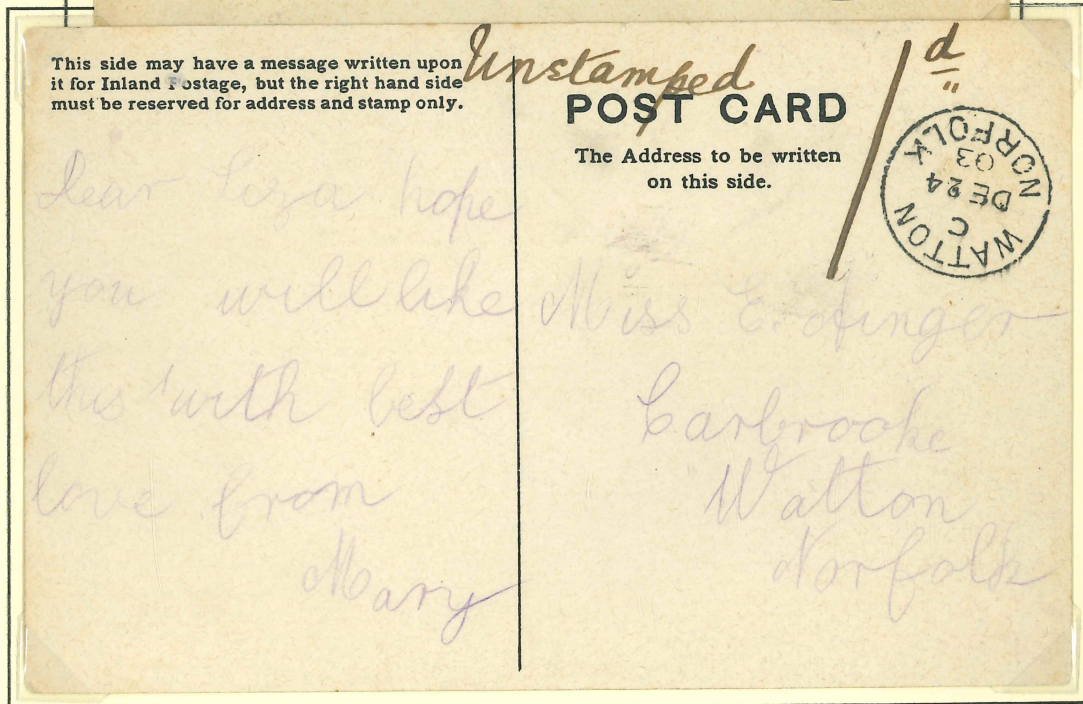
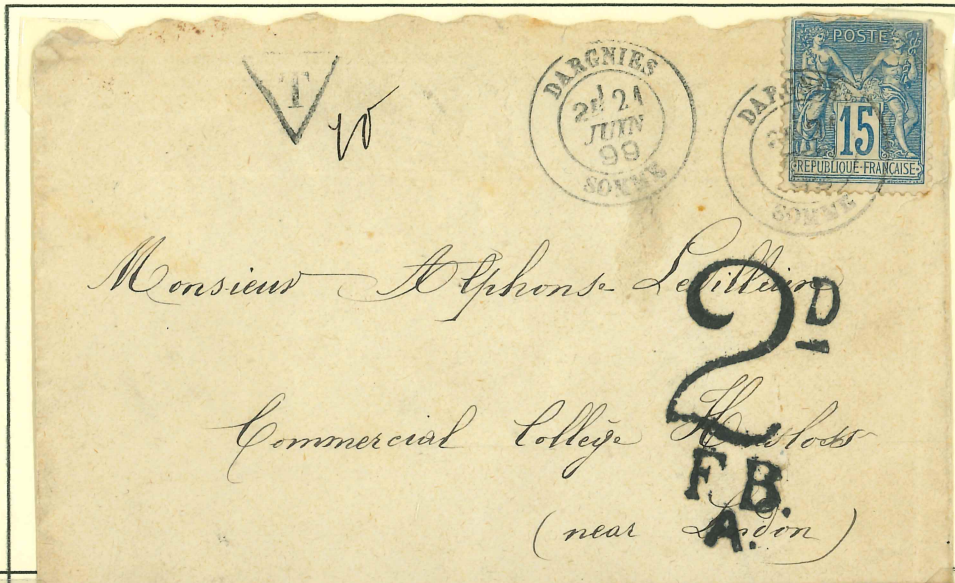
Cambridge

Paid

PERIOD PRIOR TO POSTAGE DUE STAMPS

After 10th January 1840 senders were expected to pay to send mail.

Insufficient Postage from France and Post card with no stamp.



TOP 21.6.1899

Cover from Dargnies, Somme to Nr London. Black Hand stamps "2d F. B." (Foreign Branch) to pay. Circular Back stamps in Red London 22.6.1899 and in Black Hounslow 22.6.1899.

BOTTOM 24.12.1903

Postcard Watton to Carbrook with Black ink "Unstamped 1d"
Christmas Card.

PERIOD PRIOR TO POSTAGE DUE STAMPS

After 10th January 1840 senders were expected to pay to send mail.
 These seem to be ones which the sender mispriced when they posted.



25.8.1855

Mourning Cover to London 1d Red posted at 761.

May have been overweight as "2" (2d) and Black circle "MORE TO PAY" to pay double the missed payment.



26.5.1857

Cover to Clithero with 1d Red posted at 79?. Probably overweight.

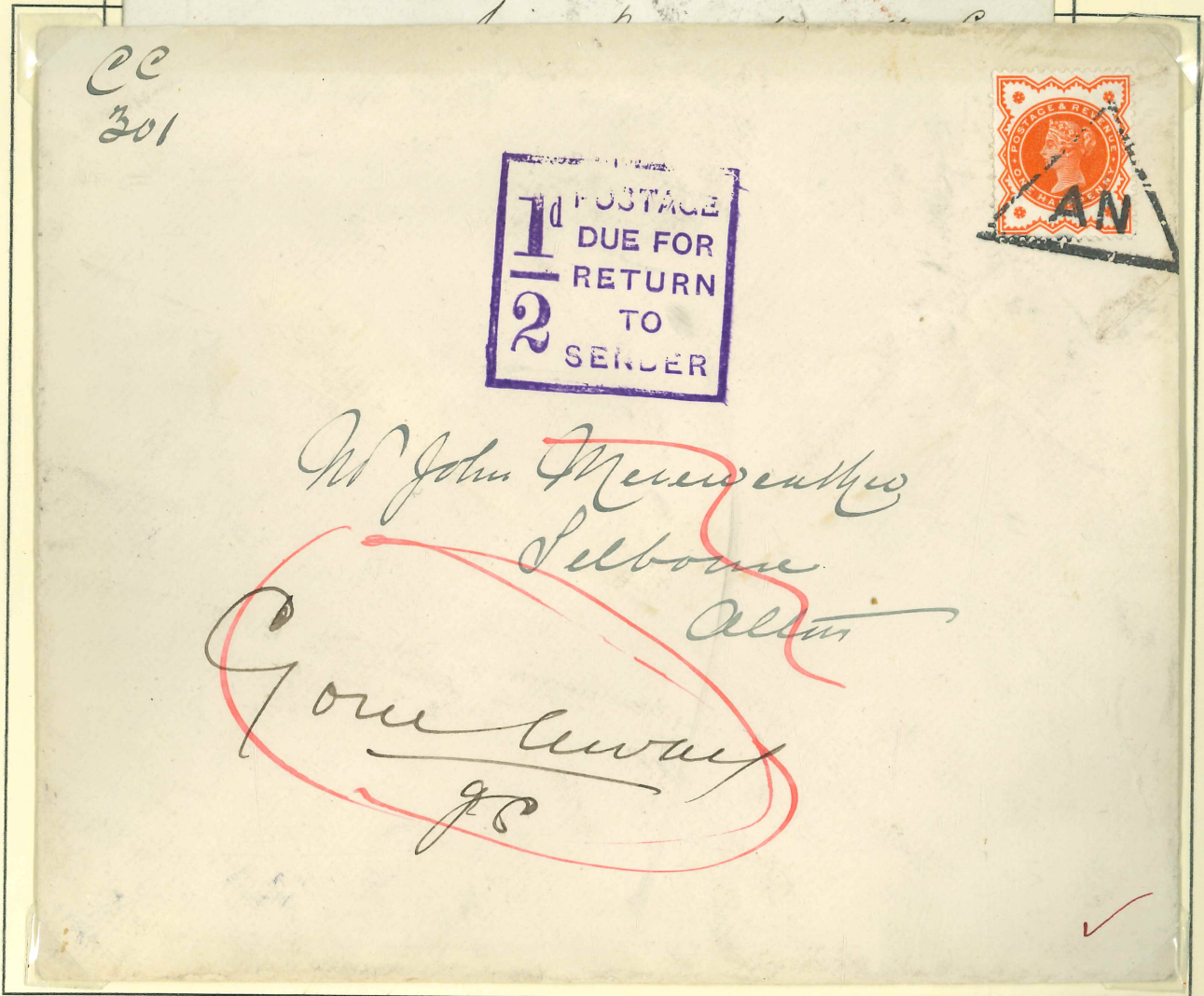
"2" (2d) in Black and Red Circle "MORE TO PAY" added to pay the extra owed.

Wotton
 Norfolk.

PERIOD PRIOR TO POSTAGE DUE STAMPS

After 10th January 1840 senders were expected to pay to send mail.

These seem to be ones which the sender mispriced when they posted and a payment for "Return to Sender".



TOP 11.7.1857

Cover to Kings Cross 1d Red posted in W1 Black "2" (2d) and Black straight line "MORE TO PAY" Back stamp E5

BOTTOM Undated

Commercial Cover with Jubilee 1/2d with Black Triangle "AN". Maybe Andover.

Handwritten "Gone Away" Purple Hand stamp "1/2d POSTAGE DUE FOR RETURN TO SENDER".

APRIL 1914 TO 1994 POSTAGE DUE Labels

On 20 April 1914 Postage Due Labels finally appeared.

Postcard 13 April 1914 and First Day Cover.



TOP 13.4.1914

Postcard from Exeter to Keyham. Has Black Hand stamp "1d TO PAY LIABLE TO LETTER RATE 285".

It appears that the "The Pocket Novelty Card" had a moving part on the front, a Motor Car.

BOTTOM 20.4.1914

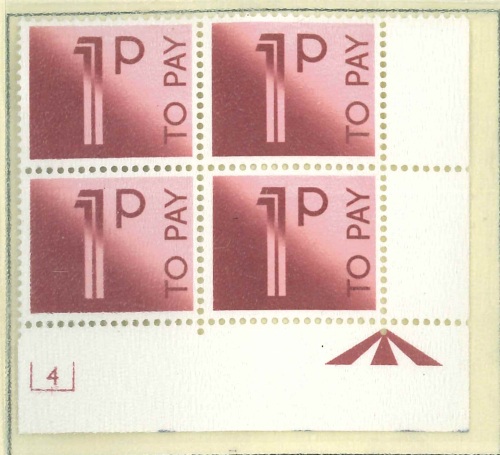
Cover Warwick to Warwick with no stamp. Has a Black 2d Hand stamp.

2d Postage Due added with Circular Warwick cancel, no obvious date.

POSTAGE DUE STAMPS —1982 —1994 BLOCKS OF FOUR

After 12 years another new design. No Watermark. Change of colours for several of the values.

1/2p has gone and 25p and £2 have come in for a set of 12.



1982 1p Crimson



1982 2p Bright Blue



1982 3p Purple



1982 4p Blue



1982 5p Brown



1982 10p Light Brown

POSTAGE DUE STAMPS — 1982 — 1994 BLOCKS OF FOUR

No watermark. Change of colours for several of the values.

1/2p has gone and 25p and £2 have come in for a set of 12.



1982 20p Sage-green



1982 25p Blue-grey



1982 50p Charcoal



1982 £1 Red



1982 £2 Turquoise



1982 £5 Dull Orange

POSTAGE DUE STAMPS 1994 — 1994

Issued on 15th February, but withdrawn later in the year. First Postage dues in multi colours.

After 12 years another new design printed by the House of Questa in Lithography. No watermark. Set of nine.



1994

1p Yellow, Orange-red and Black



1994

2p Magenta, Purple and Black



1994

5p Yellow, Brown and Black



1994

10p Yellow, Green and Black

POSTAGE DUE STAMPS —1994 —1994

Higher Values from 20p to £5.00



1994 20p Violet, Emerald-green and Black



1994 25p Magenta, Claret and Black



1994 £1 Reddish-pink, Violet and Black



1994 £5 Green, Charcoal and Black



1994 £1.20 Green, New Blue and Black



POSTAGE DUE
HANDLING FEE 20p
TOTAL TO PAY

Mr. Michael Stewart
Camp Hill
Emery Down
Lyndhurst, Hants.
ENGLAND SO43 7DZ





23/9



Miss Shirley Caroline Hope
 235 LADYKIRK RD.
 Newcastle upon Tyne
 NE 4 8AL.



POSTAGE DUE
 HANDLING FEE 20p
 TOTAL TO PAY



Mr Michael Stewart
 Camp Hill
 Southampton
 ENGLAND

A 1998 Postage Due set
 up in Southampton with a
 Handling Fee of 20p and
 Postage Due of 19p. Late
 usage of Postage Dues.

4⁰ / 6⁰⁰ / 10



Lady Bird.

Ellerslie

Newport Rd.

Cardiff

S. Wales.



England.

1D TO PAY POSTED IN T.P.O. LATE FEE NOT PAID. 17-2

N/A
244.
NA
200



Mr. A. M. Hosking,
26 Clifton Road,
Rugby,
Warwickshire





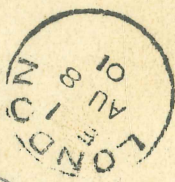
P. C. Bartlett, Esq.,

27, Southampton Street,

LONDON, W.C.2.

A letter with no stamp
from Durham University
in 1938 and with note and
Postage Due for 3d.

UNIVERSITY OFFICES,
46, NORTH BAILEY,
DURHAM.



Postkarte

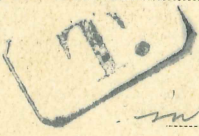


11D
12

Paul Maria Komport

L.S.
D.

post-restante



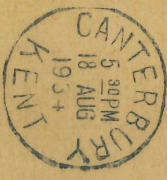
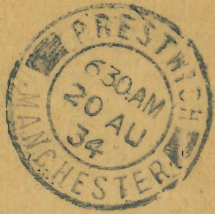
in Felixstowe by Harwich
England

IF UNDELIVERED PLEASE RETURN TO
F. H. B. SMITH, F.C.I.A., N.R.P.,
PHILATELIC INSURANCE SERVICE,
29, OLD DOVER ROAD, CANTERBURY

89.0



J. Brindleybottom Esq.,
Meaton School Lane,
Prestwich
Manchester



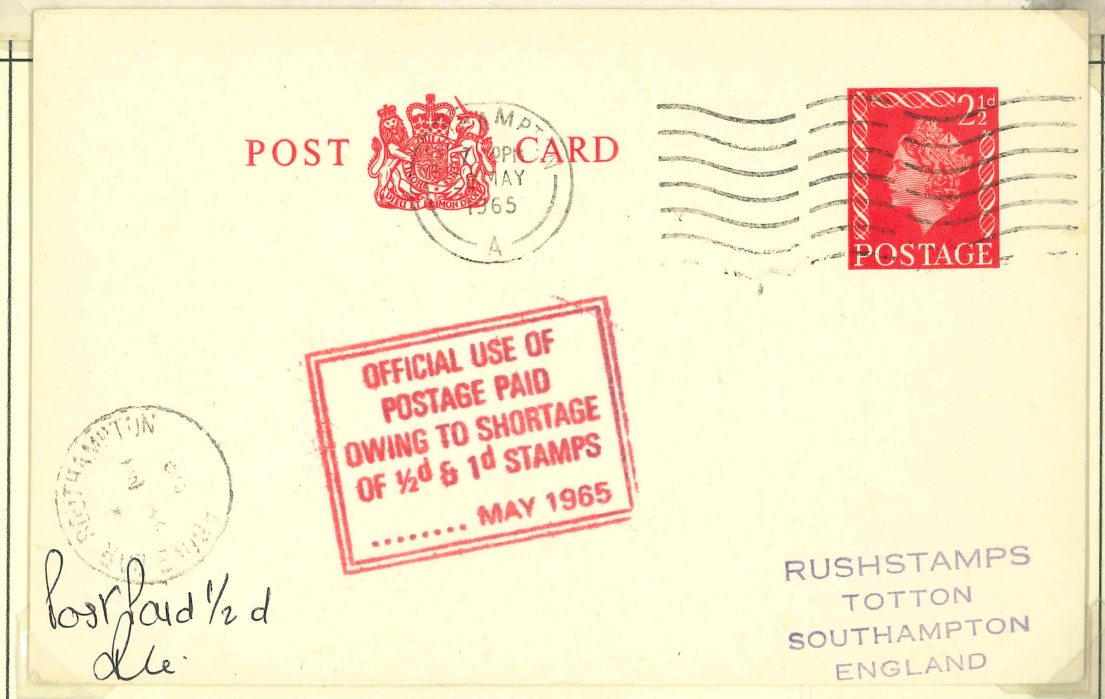
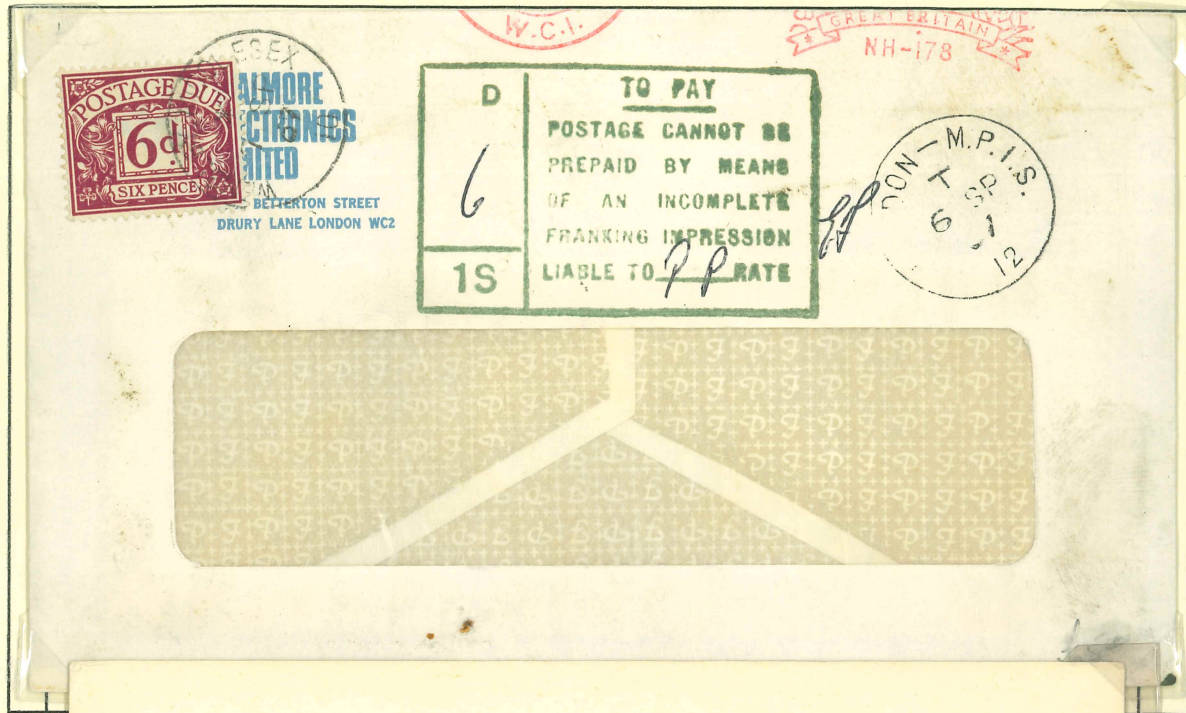
UNDELIVERED FOR REASON STATED
RETURN TO SENDER



APRIL 1914 TO 1994 POSTAGE DUE LABELS

On 20 April 1914 Postage Due Labels finally appeared.

Poor Franking and Unacceptable printed Postcard



TOP 6.9.1957

Cover London. Dark Green Box with "6d TO PAY POSTAGE CANNOT BE PREPAID BY MEANS OF AN INCOMPLETE FRANKING IMPRESSION LIABLE TO PP RATE." 6d Postage due Label with CDS.

BOTTOM 8.5.1965

Postcard Southampton to Totton with QEII printed 2½d stamp. Red box with "OFFICIAL USE OF POSTAGE PAID OWING TO SHORTAGE OF ½d AND 1d STAMPS.....MAY 1965. Written "Post Paid ½d" Southampton CDS.

APRIL 1914 TO 1994 POSTAGE DUE LABELS

On 20 April 1914 Postage Due Labels finally appeared.
Bisect stamps were not allowed and carried a penalty.



TOP 10.2.1965

Cover Dundee Angus to Dundee. Bisect QEII 6d stamp. 6d Postage Due Label with Dundee CDS.
Green box "CONTRARY TO ? 5.30" and "6d TO PAY POSTED UNPAID."

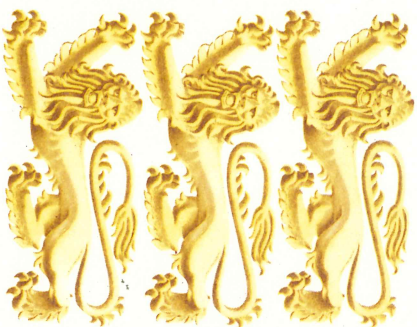
BOTTOM 8.7.1966

Cover Urmston Manchester to Mobberley, Bisect QEII 8d stamp. Two 4d Postage Due Labels with Knutsford Cancel.
Black written 8 and Black Handstamp "D TO PAY". On back note from Postmaster Knutsford.

1994 TO 1994 POSTAGE DUE LABELS

On 20 April 1914 Postage Due Labels finally appeared.

This is the end of Postage Due Labels introduced and withdrawn same year.



ROYAL MAIL FIRST DAY COVER
NEW DEFINITIVE STAMPS



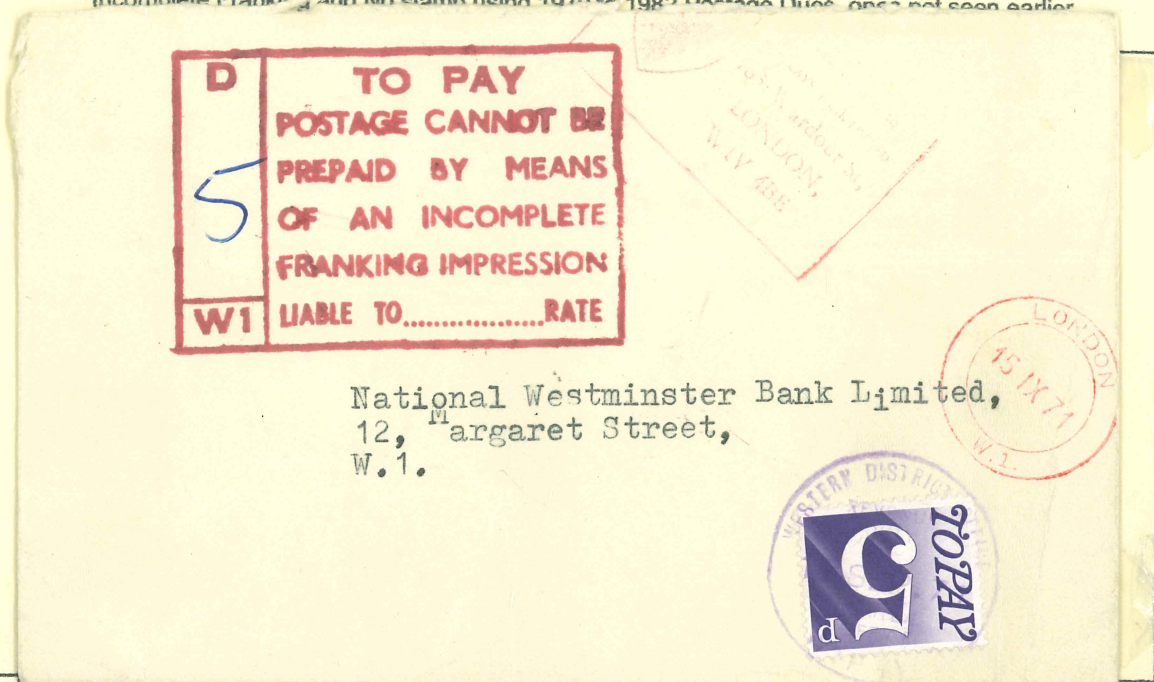
15.2.1994

First Day Cover unused cover of First Day of issue of Final Postage Due issue.

APRIL 1914 TO 1994 POSTAGE DUE LABELS

On 20 April 1914 Postage Due Labels finally appeared.

Incomplete Franking and No stamp using 1970 to 1982 Postage Due Labels not seen earlier



TOP 15.9.1974

Cover London to London. Dark Red Box with "5DTO PAY POSTAGE CANNOT BE PREPAID BY MEANS OF AN INCOMPLETE FRANKING IMPRESSION LIABLE TO.....RATE." 5p Postage due Label with Lilac Western District CDS.

BOTTOM 30.1.1978

Cover Southall to Sheffield with no stamp. Black Box "14p TO PAY POSTED UNPAID."

10p and 4p Postage Due Labels with Sheffield single circle CDS 3.2.1978

APRIL 1914 TO 1994 POSTAGE DUE LABELS

On 20 April 1914 Postage Due Labels finally appeared.

Postcard 13 April 1914 and First Day Cover.



TOP 18.8.1919

Cover Aberdeen to Cambs and Redirected to Ticehurst, No stamp. Black Hand stamp "1½d TO PAY 641".

George V 1½d Stamp. Postage Labels ½d and 1d added at Aberdeen with Circular Cancels.

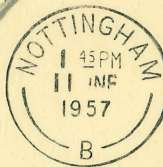
BOTTOM 31.5.1949

Cover to Slough with Derby to Bristol TPO Cancels. Black box "Posted without late fee 1d to pay"

George VI ½d and 2d stamps. 1d Postage Due added with Circular Slough Bucks.

JUNE
DAIRY
FESTIVAL

Lore Amy



285



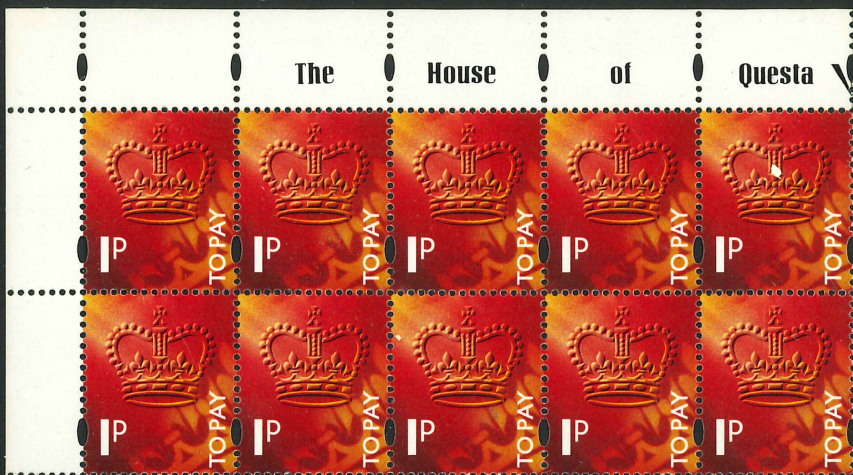
JUNE
DAIRY
FESTIVAL

UNDELIVERED FOR
REASON STATED
11 1/2
POSTAGE DUE
FOR RETURN
TO
SENDER
285

16 10 20806 H 12 6 47
MASTER MALCOLM SELDON.
33 LOWER WEAR RD.
COUNTRESS WEAR EXETER

If undelivered return to
Raleigh Industries Ltd
177, Lenton Boulevard
NOTTINGHAM

Two envelopes from
Raleigh Bikes in
Nottingham both same
date in June 1957 but
with different return costs
of 1 1/2d and 2d.



15-02-94
D102.

POSTAGE DUES 1982



EDINBURGH POSTAL TRAINING SCHOOL



SURCHARGED	
AMOUNT UNDERPAID	
SURCHARGE FEE	
TO PAY	

LIABLE TO SECOND CLASS RATE	
POSTED UNPAID	
OVER G	
NON POP	
TO PAY INSUFFICIENTLY PREPAID	



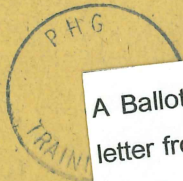
Two envelopes from the Edinburgh School for Post Office staff in 2009? with various boxes.

EDINBURGH POSTAL TRAINING SCHOOL



SURCHARGED	
AMOUNT UNDERPAID	
SURCHARGE FEE	
TO PAY	

LIABLE TO SECOND CLASS RATE	
POSTED UNPAID	
OVER G	
NON POP	
TO PAY INSUFFICIENTLY PREPAID	



A Ballot Paper no stamp letter from 1979 with note and Postage Dues of 14p to pay.







GE GVI 1951 (JUNE 06) COLOUR CHANGE
D35 YELLOW ORANGE

FVI 1951 (JUNE 06) COLOUR CHANGE
D35a BRIGHT ORANGE.



18.09.51.
No work
1/2d orange
D35.

D35-39 1/2d 18.09.51
1d 06.06.51 1 1/2d 11.02.52
4d 14.08.51 1/- 06.12.51.

1968/a
D69-76.
Umm



1959 (24 MARCH)



1968 (03 OCT) 8d

GV 1914 (20 April) Postage
Dues D1/2/4/7. Simple Cypher
Wmk, Somerset House
1/2d Emerald, 1d Carmine,
2d Agate, 5d Bistre Brown

GV 1923, Postage Due, 1 1/2d,
Chestnut. Simple Cypher Wmk
Harrison



1936 - 37 E VII WMK SIDEWAYS

1924 (JULY) GEO II



GV 1924, Postage Due, 1d,
Carmine, Chalky Paper, Simple
Cypher Wmk. Somerset House

1982 (09 JUNE)

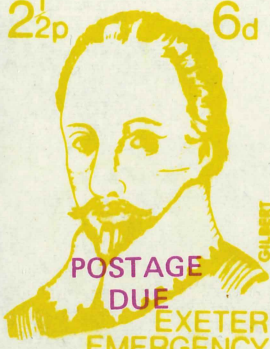




S. G. D34
1937/38 2/6
Control Block
Mini X 24 S46
Cat 60
Used £17.50

1971 POSTAL STRIKE EXETER

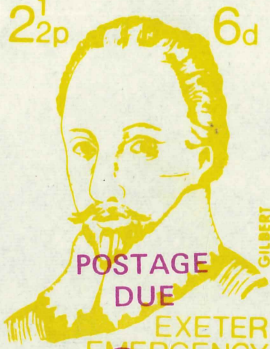
2¹/₂p 6d



POSTAGE DUE
EXETER
EMERGENCY
DELIVERY SERVICE

1p

2¹/₂p 6d



POSTAGE DUE
EXETER
EMERGENCY
DELIVERY SERVICE

2p

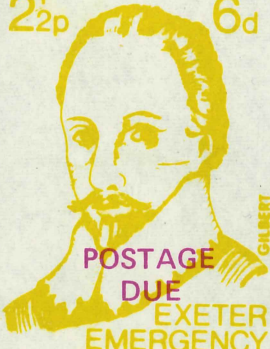
2¹/₂p 6d



POSTAGE DUE
EXETER
EMERGENCY
DELIVERY SERVICE

5p

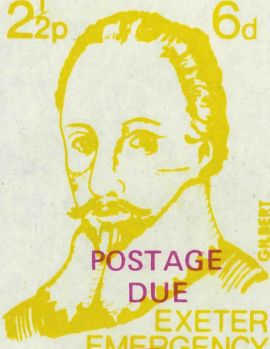
2¹/₂p 6d



POSTAGE DUE
EXETER
EMERGENCY
DELIVERY SERVICE

10p

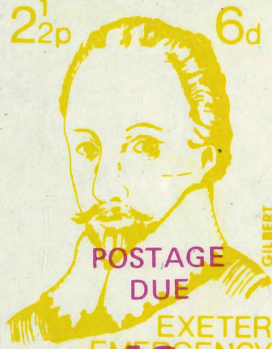
2¹/₂p 6d



POSTAGE DUE
EXETER
EMERGENCY
DELIVERY SERVICE

15p

2¹/₂p 6d



POSTAGE DUE
EXETER
EMERGENCY
DELIVERY SERVICE

40p

2¹/₂p 6d



EXETER
EMERGENCY
DELIVERY SERVICE

2¹/₂p 6d



EXETER
EMERGENCY
DELIVERY SERVICE

2¹/₂p 6d



EXETER
EMERGENCY
DELIVERY SERVICE



1937-38 B37. 3P

DECIMAL TRAINING



POSTAGE DUE STAMPS —1926 —1932 Pt 28

BECUANALAND PROTECTORATE

Used January 1926 to 12 December 1932

1/2d Orange was Block GvR Cypher watermark sideways

1d Red was Script GvR Cypher and Chalky paper watermark sideways

2d Black Block GvR Cypher watermark sideways



1932
1/2d Orange



1932
1d Red



1932
2d Black
Note Black OP
lettering

POSTAGE DUE STAMPS —1948 —1950 Pt 29

British Military Administration 27 May 1948.

British Administration (civilian) 06 February 1950

The watermark on Postage Dues always appears sideways.



1948
5 Cents Green



1948
10 Cents Red



1948
1/- Blue



1950
5 Cents Green



1950
10 Cents Red



1950
20 Cents Black



1950
30 Cents Purple



1950
1/- Blue

POSTAGE DUE STAMPS —1951 —1963 Pt 32

SOUTHERN RHODESIA

Southern Rhodesia 01 October 1951 to 1963

New colours in 1951 but only 1d affected in this set.

The 4d Dull Grey-green was rapidly withdrawn when it was realised the new 4d Blue had been OP.

The watermark on Postage Dues always appears sideways.



1951
1/2d Green



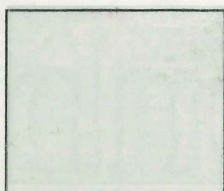
1951
1d Violet-blue



1951
2d Black



1951
3d Purple



1951
4d Dull Grey-green



1951
4d Blue



1951
1/- Blue

POSTAGE DUE STAMPS —1948 —1950 Pt 30

B.M.A & B.A. TRIPOLITANIA

British Military Administration 01 July 1948.

British Administration (civilian) 06 February 1950

MAL is Military Authority Lira—a political move

The watermark on Postage Dues always appears sideways.



1948
5 Cents Green



1948
10 Cents Red



1948
20 Cents Black



1948
30 Cents Purple



1948
1/- Blue



1950
5 Cents Green



1950
10 Cents Red



1950
20 Cents Black



1950
30 Cents Purple



1950
1/- Blue

POSTAGE DUE STAMPS —1942 —1950 Pt 31

M.E.F.— MIDDLE EAST FORCES

Eritrea March 1942 — Italian Somaliland 13 April 1942

Cyrenaica 1943 —Tripolitania 1943

Dodecanese Islands 1945

The watermark on Postage Dues always appears sideways.



1942
1/2d Green



1942
1d Red



1942
2d Black



1942
3d Purple



1942
3d Purple
Control K 42



1948
1/- Blue

1970 (12 JUNE)

ERROR 1970





TRAINING STAMPS
 CASTLES QEI
 1988 (18 OCT)
 1977 (02 FEB) £1.50

SG 451 'P.O. TRAINING BARS' on
nint r/h marginal copy on re-engraved.

1924-26 G V

EVII 1905 (07 Oct), 2/6, SG 261
Type M15, Pale Dull Purple,
Chalky Paper, Training Stamp,
Wmk Imperial Crown, De La
Rue, o.g., Used M.



S.G.
£10 Britannia
Mint 12
Used -

1993 (02 MARCH) QE II.



1970 (17 JUNE) QE II.



Post Office Training

Stamps are either given
two black lines or OP
SCHOOL SPECIMEN

in order to demonetise

them.



1982 TRAINING



POST OFFICE TRAINING POSTAGE DUE STAMPS 1970 —1982

These stamps used in training are rendered valueless by the printed lines on them. 11p is missing.

After 56 years a new design of Postage Due stamps and 'd' becomes 'p'. No Watermark.



1971
1/2p Light Turquoise Blue
Coated paper



1971
1p Crimson
Coated paper



1971
2p Green
Coated paper



1971
3p Bright Blue
Coated paper



1971
4p Light Sepia
Coated paper



1971
5p Pale Violet
Coated paper



1974
7p Red Brown
Florescent paper



1970
10p Cerise
Coated paper



1970
20p Olive Green
Coated paper



1970
50p Blue
Coated Paper



1970
£1 Black
Coated Paper



1973
£5 Black and Orange
Florescent paper