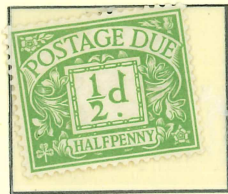


POSTAGE DUE STAMPS 1914 —1924

France was the first country to introduce Postage Dues in 1859.

Postage Due Labels were introduced 20 April 1914 and withdrawn 1994. Set of eight printed by Harrison & Sons .



1/2d Emerald
Royal Cypher
Watermark



1d Carmine
Royal Cypher
Watermark



1 1/2d Chestnut
Royal Cypher
Watermark



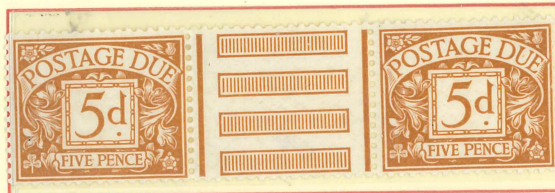
2d Agate
Royal Cypher
Watermark



3d Violet
Royal Cypher
Watermark



1921
4d Dull Grey-green
Royal Cypher
Watermark



5d Brownish-cinnamon
Pairs with Columns in the middle are rare
Royal Cypher
Watermark



1915
1/- Bright Blue
Royal Cypher
Watermark

POSTAGE DUE STAMPS COLOUR TRIALS SPECIMEN 1914

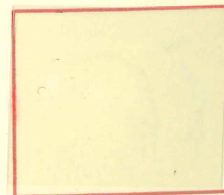
Type 23



2d Carmine
Trial Number 1
Colour Standard
Royal Cypher
Watermark



2d Red-brown
Trial number 5
Royal Cypher
Watermark



2d Faience Green
Trial number 11
Royal Cypher
Watermark

POSTAGE DUE STAMPS — SPECIMEN 1914 – 1924

The Postage Stamp Dept of the Inland Revenue controlled the production of stamps until 1915.

Type 23 tended to be used for colour standards. This is the full set of eight.

Type 23



1/2d Emerald
Royal Cypher
Watermark

Type 23



1d Carmine
Royal Cypher
Watermark

Type 23



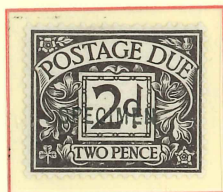
1 1/2d Chestnut
Royal Cypher
Watermark

Type 26



3d Violet
Royal Cypher
Watermark

Type 26



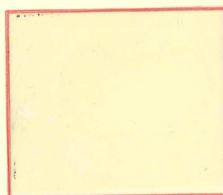
2d Agate
Royal Cypher
Watermark

Type 23



1921
4d Dull Grey-green
Royal Cypher
Watermark

Type 23



5d Brownish-cinnamon
Royal Cypher
Watermark

Type 23



1915
1/- Bright Blue
Royal Cypher
Watermark

POSTAGE DUE STAMPS — 1924 — 1936

. From 1924 — 1934 it was Waterlow & Sons. From 1934 it was Harrison & Sons.

Watermark Block Cypher Sideways. SPECIMEN on 2/6.



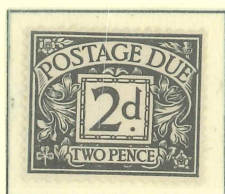
1925
1/2d Emerald



1925
1d Carmine



1924
1 1/2d Chestnut



1924
2d Agate



1924
3d Dull Violet



1924
4d Dull Grey-green



1931
5d Brownish Cinnamon

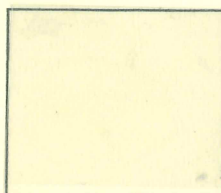


1924
1/- Deep Blue

Type 23



1924
2/6 Purple on Yellow



1924
3d Dull Violet
Printed on gum side

POSTAGE DUE STAMPS —1936

.Watermark E 8 R. The watermark on Postage Dues always appears sideways.

Note that it took until November 1936 to issue the first Postage Dues. They were issued until June 1937.



June 1937
1/2d Emerald



May 1937
1d Carmine



May 1937
2d Agate



March 1937
3d Dull Violet



December 1936
4d Dull Grey-green



November 1936
5d Brownish Cinnamon



December 1936
1/- Bright Blue



May 1937
2/6 Purple on Yellow



May 1937
1d Carmine
Control A 37

POSTAGE DUE STAMPS —1937—1951

The printer from 1934 it was Harrison & Sons.

Watermark Gvir The watermark on Postage Dues always appears sideways.



1938
1/2d Emerald



1938
1d Carmine



1938
2d Agate



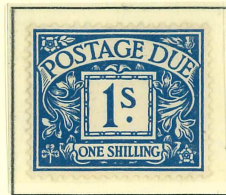
1937
3d Violet



1937
4d Dull Grey-green



1938
5d Yellow-brown



1937
1/- Deep Blue



1938
2/6 Purple on Yellow



1937
3d Violet
Control B 37

POSTAGE DUE STAMPS GVI AND EII 1951—1955

New colours in 1951. Watermarks GVI and Tudor Crown EII.

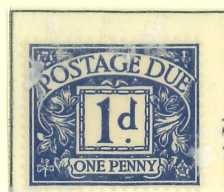
The watermark on Postage Dues always appears sideways.



1951
1/2d Yellow Orange



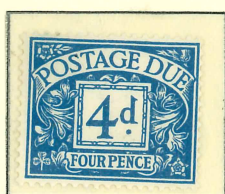
1954
1/2d Bright Orange



1951
1d Violet-blue



1952 1
1/2d Green



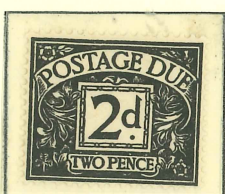
1951
4d Blue



1951
1/- Ochre



1955
1/2d Orange



1955
2d Agate



1955
3d Violet



1955
4d Blue



1955
5d Yellow-brown



1954
2/6 Purple on Yellow

References:-

Della Thompson et al, *Oxford Shorter English Dictionary* Oxford University Press 1996

Samuel Marcus and Huggins Alan, *Specimen stamps and Stationery of Great Britain* 1980 GBPS.

Barefoot John *GB Revenue Compendium* 1981 . UK.

Tanner Michael J. A. *Great Britain Medicine Stamp Duty* Revenue Society 2013.

Usage:- SPECIMEN and CANCELLED appeared on most issued stamps, unissued ones, colour trails colour standards, experiments such as Dr Perkins, stamps for Official use, Telegraph and Postal Stationery. Inevitably there were some errors in the production e.g. SPECIMEN OP upside down or two OP's together.

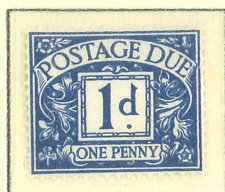
POSTAGE DUE STAMPS —1955 —1958

Watermark St Edward 's Crown E2R

The watermark on Postage Dues always appears sideways.



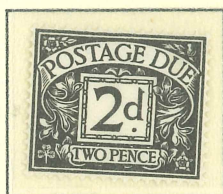
1956
1/2d Orange



1956
1d Violet Blue



1956
1 1/2d Green



1956
2d Agate



1956
3d Violet



1956
4d Blue



1956
5d Yellow-brown



1955
1/- Ochre



1957
2/6 Purple on Yellow



1955
5/- Scarlet

POSTAGE DUE STAMPS 1959 — 1971

From 1934 the printer was Harrison & Sons. There was no change in design but some label colour changes and some shades. 6d, 8d and High Values had by now been added. The watermark on Postage Dues always appears sideways. Set of 14 Labels.



1961
1/2d Orange
Multiple Crown
Watermark



1960
1d Violet Blue
Multiple Crown
Watermark



1960
1 1/2d Green
Multiple Crown
Watermark



1959
2d Agate
Multiple Crown
Watermark



1959
2d Dark Agate
Multiple Crown
Watermark



1959
3d Violet
Multiple Crown
Watermark



1959
4d Blue
Multiple Crown
Watermark



1959
4d Dark Blue
Multiple Crown
Watermark



1961
5d Yellow-brown
Multiple Crown
Watermark



1962
6d Purple
Multiple Crown
Watermark



1968
8d Red
Multiple Crown
Watermark



1960
1/- Ochre
Multiple Crown
Watermark



1961
2/6 Purple on Yellow
Multiple Crown
Watermark



1961
5/- Scarlet on Yellow
Multiple Crown
Watermark



1963
10/- Blue on Yellow
Multiple Crown
Watermark



1963
£1 Black
Multiple Crown
Watermark

DISS 1826



Dated 20 April 1826

Sent from Diss to Windham, (note early spelling of Wymondham), by ? Taylor. Cost Receiver 7d.

The letter refers to the considerable sums of £1,700 and £500 in 1817. Note Diss Circular Postmark.

POSTAGE DUE STAMPS 1970 — 1982

After 56 years a new design of Postage Due stamps and 'd' becomes 'p'.

There is now no watermark. There is now a top value of £5. Set of 13.



1971
1/2p Light Turquoise Blue
Coated paper



1971
1p Crimson
Coated paper



1971
2p Green
Coated paper



1971
3p Bright Blue
Coated paper



1971
4p Light Sepia
Coated paper



1971
5p Pale Violet
Coated paper



1974
7p Red Brown
Florescent paper



1970
10p Cerise
Coated paper



1975
11p Brunswick Green
Florescent paper



1970
20p Olive Green
Coated paper



1970
50p Blue
Coated Paper



1970
£1 Black
Coated Paper



1973
£5 Black and Orange
Florescent paper

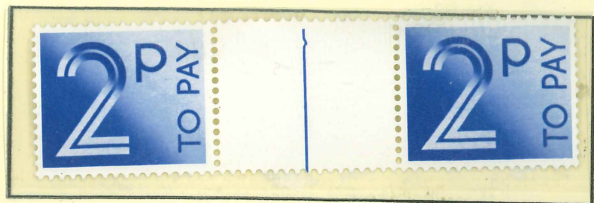
POSTAGE DUE STAMPS — 1982 — 1994 GUTTER PAIRS

After 12 years another new design. No watermark. All introduced in 1982.

Change of colours for several of the values. 1/2p has gone and 25p and £2 have come in for a set of 12.



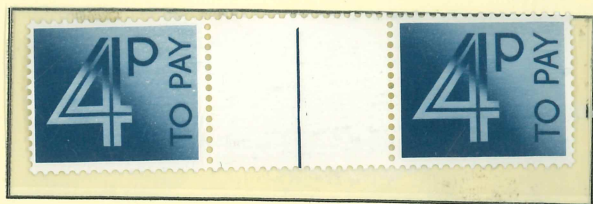
1p Crimson



2p Bright Blue



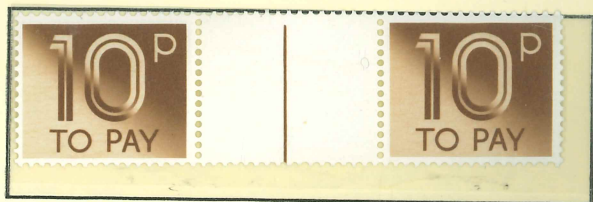
3p Purple



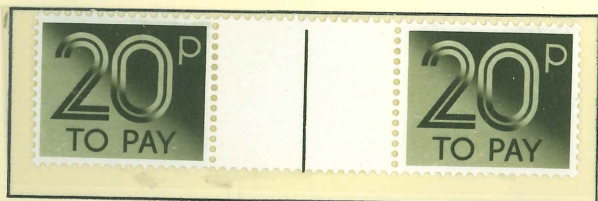
4p Blue



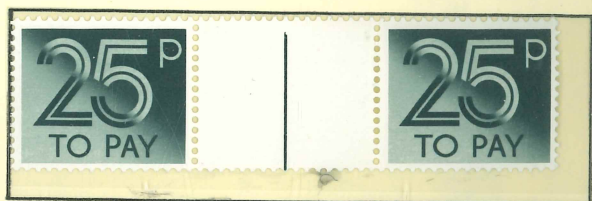
5p Brown



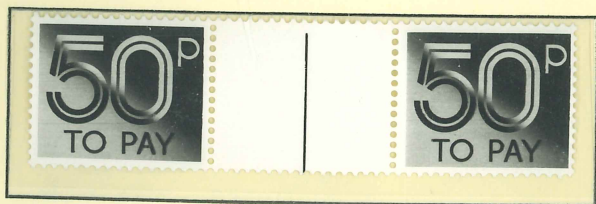
10p Light Brown



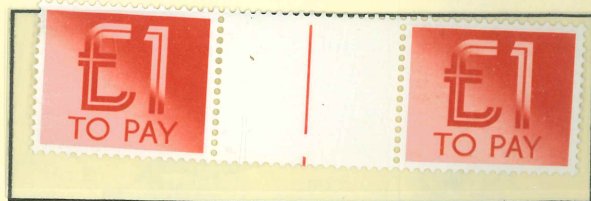
20p Sage-green



25p Blue-grey



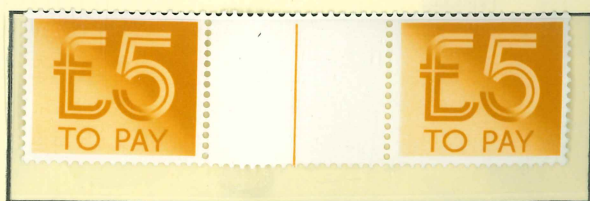
50p Charcoal



£1 Red

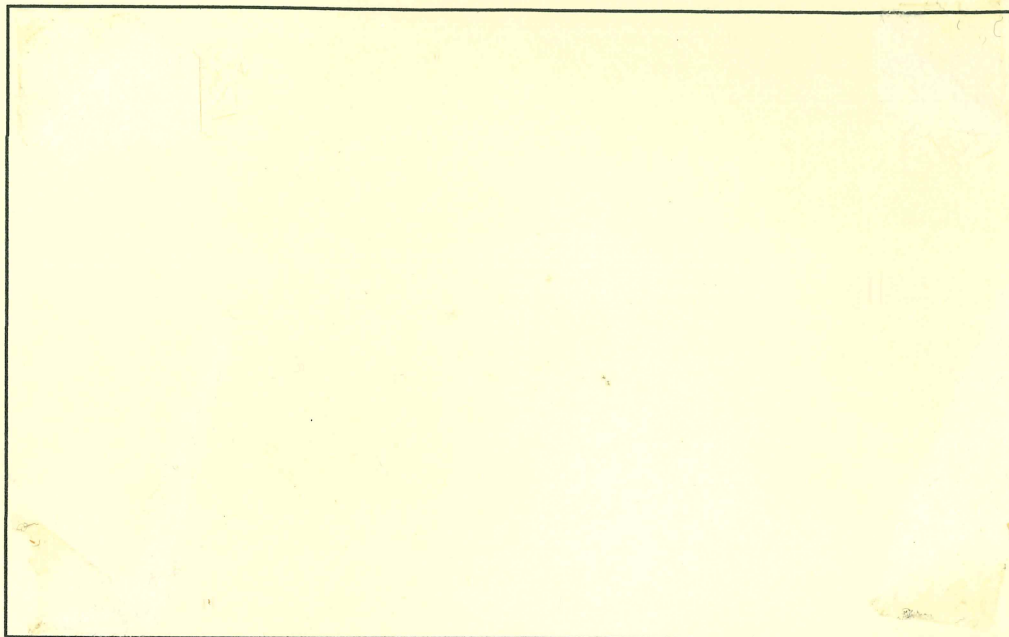


£2 Turquoise



£5 Dull Orange

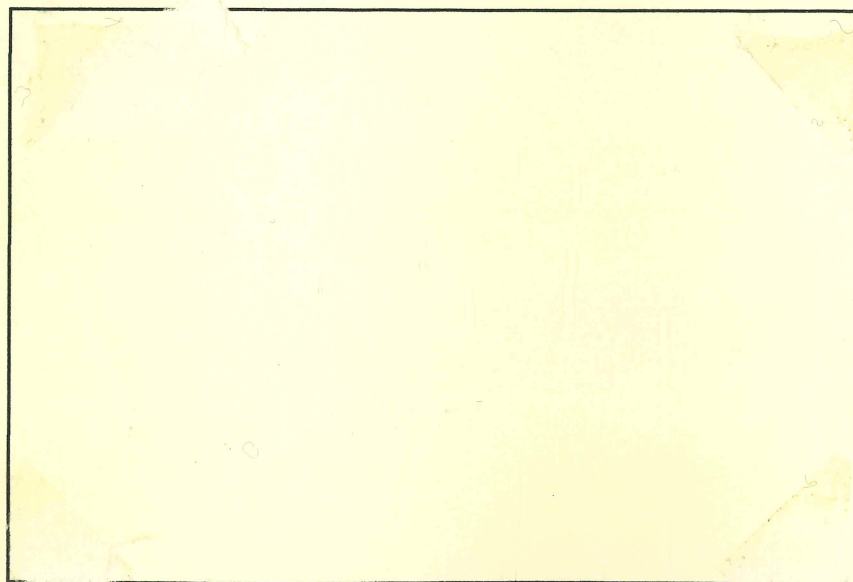
WELLS TO DEREHAM 1841 and HINGHAM TO WYMONDHAM 1847



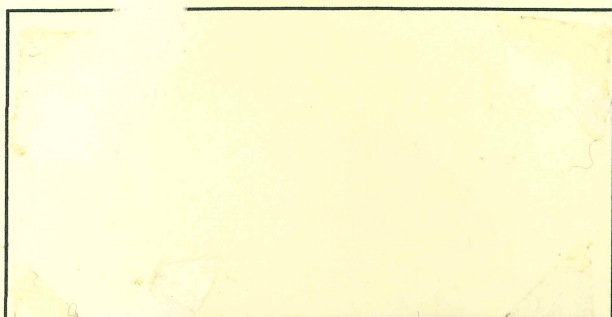
Letter Wells to Dereham 30 December 1841 1d Red with Wells Maltese Cross.

Double Circle CDS for Wells and Dereham.

Solicitor records arrival date same day but Dereham CDS seems to indicate 31st.



Hingham to Wymondham 16 October 1847. Late use of 1d in Red
with "Paid" bottom left hand corner.



Reverse of Letter showing Double Ring CDS for

POSTAGE DUES FINAL ISSUE 1994-1994

Issued and withdrawn same year despite new striking design

Only 9 values were issued. No watermark



1994
1p Yellow, Orange-red
and Black



1994
2p Magenta, Purple
and Black



1994
5p Yellow, Brown
and Black



1994
10p Yellow, Green and
Black



1994
20p Violet, Emerald-green
and Black



1994
25p Magenta, Claret and
Black



1994
£1 Reddish-pink, Violet
and Black



1994
£1.20 Green, New Blue
and Black



1994
£5 Green, Charcoal and
Black

POSTAGE DUE STAMPS — 1/2d CONTROLS — 1914 — 1924

.Controls were used by the printers, Harrison & Sons and Somerset House for accountancy purposes.

Control A 11 was for 1911, so A.14 is for 1914.



1914

1/2d Emerald

Control D.14

Somerset House



1916

1/2d Emerald

Control I 16

Harrison & Sons

POSTAGE DUE STAMPS — 1d CONTROLS — 1914 — 1924

They are all Harrison and Sons printings. Watermarks Block Cypher sideways.
Controls tended after 1914 to change twice yearly.



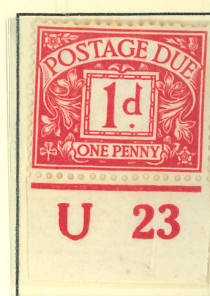
1921
1d Carmine
Control R 21



1922
1d Carmine
Control S 22



1922
1d Carmine
Control T 22



1923
1d Carmine
Control U 23

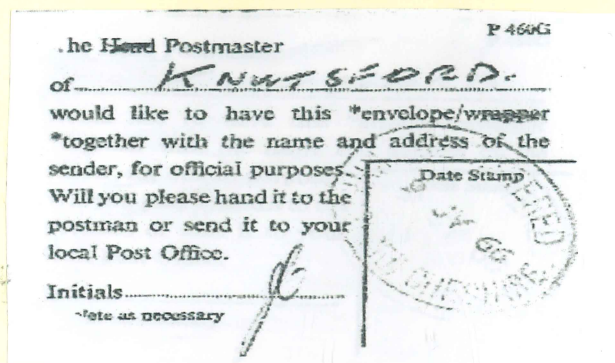
GREAT BRITAIN POSTAGE DUES GEORGE III TO ELIZABETH II

INTRODUCTION

This exhibit starts at George III as that is the earliest cover on display. Postage Dues go previous to that date when insufficient postage has been indicated. "While the problem of what to do about letters not paying the full correct fee had existed since the creation of regular postal systems, it was greatly heightened by the advent of postage stamps, since customers were now making their own decisions about the right amount to pay, without the assistance of a presumably knowledgeable postal clerk." Wikipedia.

In Great Britain, up to the introduction of the 1d Black and 2d stamps in May 1840, the cost of the letter or package was simply written on the front and the Postman collected the amount due. However, as can be seen from the 1829 letter sometimes the sending clerk did not put on the correct amount and excess (Postage Due) had to be collected. There were concerns that sometimes a Postal Clerk would put an extra amount and pocket that amount. This problem was solved by the French in 1859 when they issued Official Postage Dues. In Great Britain Postage Dues were not introduced until 1914. The design stayed basically the same with only changes of Watermark until 1970. There were changes of Design in 1970, 1982 and 1994 with the Labels being withdrawn in 1994.

There is the conundrum of what to call Postage Dues. Are they "Stamps" or "Labels?" In this exhibit they will be called "Labels" as they are not for postage but to collect excess revenue and that they have no postage value on their own.. Some items have a "T" for Tax hand stamp in black



An example of a note affixed to the back of an envelope in 1966 as the stamp on the front was a Bisect.

- 1 Covers 2—5
- 2 Labels 1914-1924 6—7
- 3 Labels 1936 8
- 4 Labels 1937 —1951 9
- 5 Labels 1959-1970 10
- Labels 1970-1982 11
- 6 Labels 1982-1994 12
- 7 Covers 13-16

References:-
Wikipedia

Stoneham GB Catalogue 16th Edition 2014

POSTAGE DUE STAMPS — 1d CONTROLS — 1914 — 1924

Somerset House has a dot between the letter and number to distinguish its printings.

Controls tended after 1914 to change twice yearly.



1914

1d Carmine Control D 14 Harrison & Sons



1914

1d Carmine Control E 14 Harrison & Sons



1916

1d Carmine Control I 16 Harrison & Sons

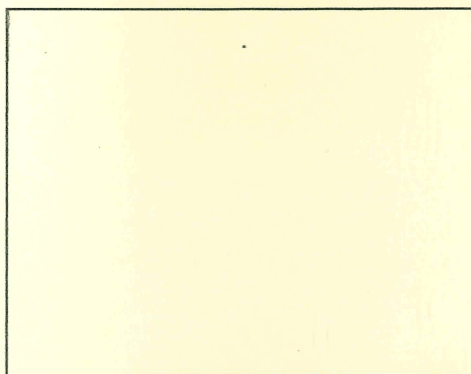
GREAT BRITAIN POSTAGE DUES GEORGE III TO ELIZABETH II

INTRODUCTION

This exhibit starts at George III as that is the earliest cover on display. Postage Dues go previous to that date when insufficient postage has been indicated. "While the problem of what to do about letters not paying the full correct fee had existed since the creation of regular postal systems, it was greatly heightened by the advent of postage stamps, since customers were now making their own decisions about the right amount to pay, without the assistance of a presumably knowledgeable postal clerk." Wikipedia.

In Great Britain, up to the introduction of the 1d Black and 2d stamps in May 1840, the cost of the letter or package was simply written on the front and the Postman collected the amount due. However, as can be seen from the 1829 letter sometimes the sending clerk did not put on the correct amount and excess (Postage Due) had to be collected. There were concerns that sometimes a Postal Clerk would put an extra amount and pocket that amount. This problem was solved by the French in 1859 when they issued Official Postage Dues. In Great Britain Postage Dues were not introduced until 1914. The design stayed basically the same with only changes of Watermark until 1970. There were changes of Design in 1970, 1982 and 1994 with the Labels being withdrawn in 1994.

There is the conundrum of what to call Postage Dues. Are they "Stamps" or "Labels?" In this exhibit they will be called "Labels" as they are not for postage but to collect excess revenue and that they have no postage value on their own.. Some items have a "T" for Tax hand stamp in black



An example of a note affixed to the back of an envelope in 1966
as the stamp on the front was a Bisect. Copy 75%.

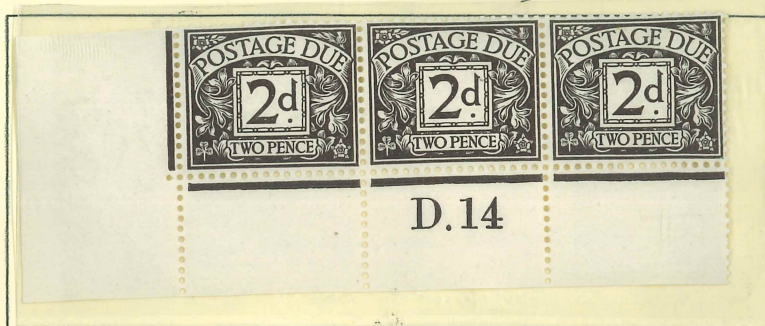
1. Introduction
- 2 Covers 2—3
- 3 Labels 1914-1924 4-5
- 4 Labels 1959-1970 6
- 5 Covers 7-9

References:-
Wikipedia

Stoneham GB Catalogue 16th Edition 2014

POSTAGE DUE STAMPS — 2d CONTROLS — 1914 — 1924

Somerset House has a dot between the letter and number to distinguish its printings
Controls tended after 1914 to change twice yearly number to distinguish its printings.



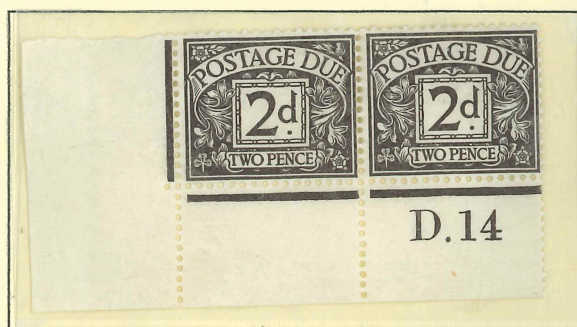
1914

2d Agate

Control D.14

Somerset House

Watermark Sideways and Inverted

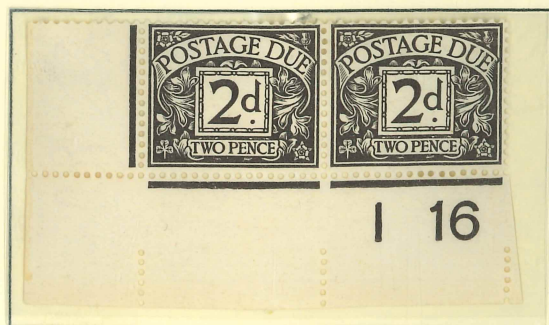


1914

2d Agate

Control D.14

Somerset House



1916

2d Agate

Control I 16

Harrison & Sons



POSTAGE DUE STAMPS — 3d CONTROLS — 1914 — 1932

Somerset House has a dot between the letter and number to distinguish its printings.

Controls tended after 1914 to change twice yearly.

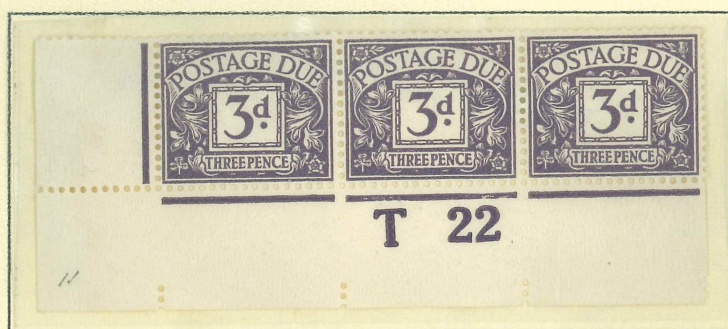


1918

3d Violet — year of issue

Control L 18

Harrison & Sons



1922

3d Violet

Control T 22

Harrison & Sons



1925

3d Violet

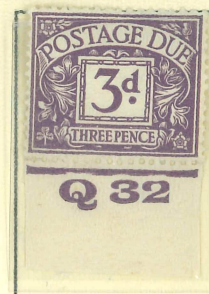
Control D25 Harrison & Sons
Experimental Paper Watermark



1928

3d Violet

Control T 22
Harrison & Sons



1932

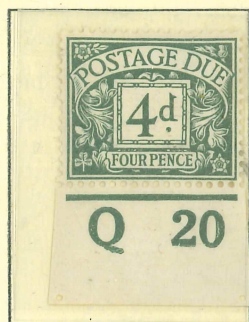
3d Violet

Control T 22
Harrison & Sons

POSTAGE DUE STAMPS — 4d, 5d AND 1/- CONTROLS — 1914 — 1935

Controls were used by the printers, Harrison & Sons and Somerset House for accountancy purposes.

Watermark Block Cypher sideways



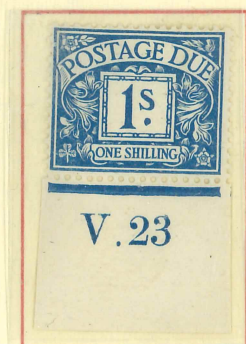
1920
4d Dull Grey-green
Control Q 20
Harrison & Sons



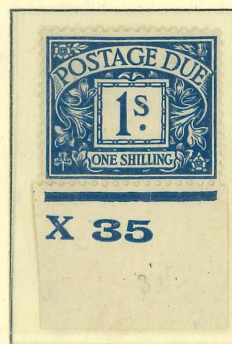
1914
5d Brownish Cinnamon
Control D.14
Somerset House



1914
5d Brownish Cinnamon
Control D 14
Harrison & Sons



1923
1/- Deep Blue
Control V.23
Somerset House



1935
1/- Deep Blue
Control X 35
Harrison & Sons