



POSTAGE STAMPS OF

# IRELAND

(ÉIRE)

MADE IN U.S.A.

**STAMPAÍ**

31-2      6d 2<sup>p</sup>      2/-  
9d 1<sup>p</sup> 6d 1<sup>p</sup> 2

**THE STAMP OF QUALITY**

MOTOR MEX SPIRIT.  
MOTOR SILENSOL OILS.  
LAMP DAISY OIL.

**McMULLAN BROS., LTD.**

ESTABLISHED IN ALL PRINCIPAL CITIES  
AND TOWNS IN IRELAND.

## DEAF EARS

hear again with the Guaranteed NEW NATURELLE (Ear-skin-shade) "ARDENTE" WHISTBUTTON—Entirely different and ONLY individual method. Hearing is TRUE-TO-TONE for conversation, church, wireless, music, 'Talkies', etc., from various angles. Chosen for hearing by Prof. Sir Ambrose Fleming, Kt., M.A., B.Sc., F.R.S., the eminent scientist whose invention of the thermionic valve made wireless possible, by deaf doctors, and thousands of the deaf public—men, women and children, hard-of-hearing or very deaf. **CALL FOR FREE TEST**, or write for "Medical Reports."

**FREE HOME TESTS ARRANGED.**

**97 GRAFTON ST., DUBLIN.**  
(Over Kelly's—Tailors),  
Phone No. 33385.

**30 WELLINGTON PL., BELFAST.**  
Phone No. 1953. And Branches.

**ARDENTE**  
FOR DEAF EARS

### POSTAL RATES.

INLAND.  
(Including N. Ireland & Gt. Britain.)

LETTERS—Not exceeding 3 oz.	2d.
Each additional oz.	½d.
POST CARDS Each	1d.
<b>PRINTED PAPERS—</b>	
Not exceeding 1 oz.	½d.
2 oz.	1d.
Each additional 2 oz. up to 2 lb.	½d.
<b>NEWSPAPERS—Rate per copy—</b>	
Not exceeding 6 oz.	1d.
Each additional 6 oz. up to 2 lb.	½d.
<b>PARCELS—Not exceeding 2 lb.</b>	
Each additional 3 lb. up to 11 lb.	3d.
Registration—Minimum Fee	3d.

PLEASE POST EARLY.

leac pinsin

1 pinsin 1

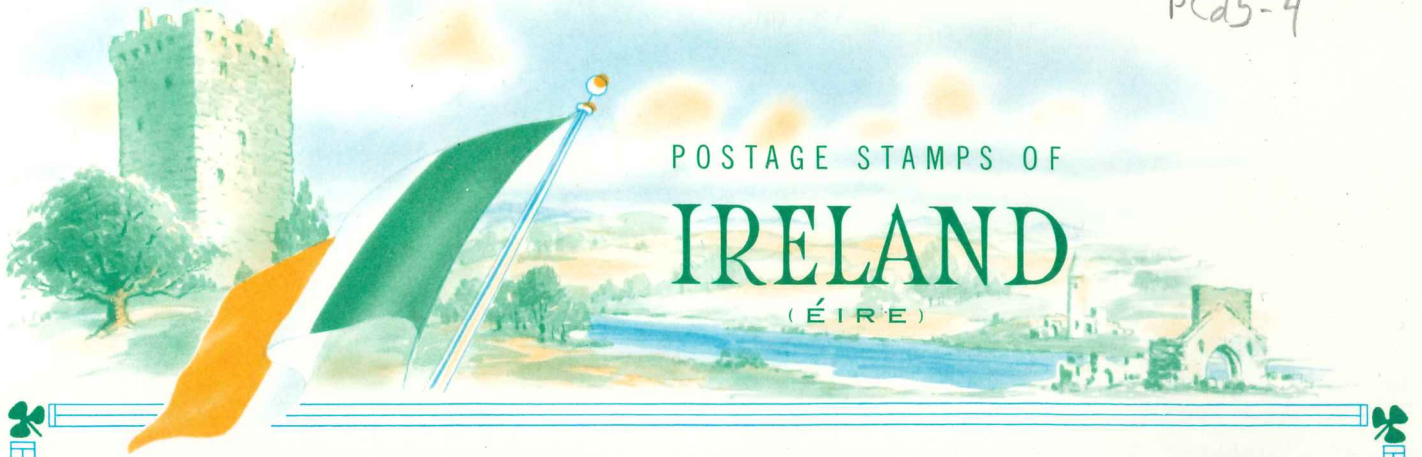
Get a Telephone

Buy Savings Certificates

Learn Irish



PC25-4



POSTAGE STAMPS OF

# IRELAND

(ÉIRE)



*Have you got your  
Tickets yet?*

**IRISH HOSPITALS'  
SWEEP**

**MUNSTER & LEINSTER BANK  
LIMITED.**

**Head Office: CORK.**

Capital Paid Up - - - £750,000  
Reserve Fund - - - £1,000,000  
Deposits, etc. 31st. December 1930 £24,934,614

208 Branches and Sub-Branches in the Free State  
and Northern Ireland.

Thrift Deposits received and Home Safes supplied  
at all offices

Executor and Trustee and Income Tax Departments.

**PLACE YOUR LIFE ASSURANCE**

WITH

**THE  
CITY OF DUBLIN  
ASSURANCE COMPANY, LTD.,**

**THE PIONEER IRISH OFFICE.**

HEAD OFFICE:  
4, UPPER O'CONNELL STREET,  
DUBLIN.

C. W. GUEST, P.C., F.F.I.  
MANAGING DIRECTOR.



551