

January 1866?

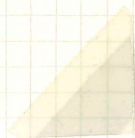
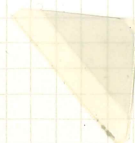
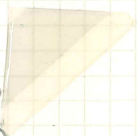
1 Anna Blue

Native Paper

The earliest cover known. - a very distinctive colour.

Samvat
1913
Magh 29
(= January 11/12 1857)

Hijra
1282
(between May 27 1865
and April 16 1866)



2 1/2 anna
Rate

of Jones

Samvat year is clearly incorrect (1913 = 1857).

08.12.1282H ~ 23.04.1866 AD

RS 01-17-96

April 1866 - 1867

JK6

SG. 5

1 Anna Ultramarine

→ verkaufen



"1 Anna" in English
& Persian manuscript (meaning?)
written on back.

14/04/02 → SG

φ24

14/04/02 → SG

Used in Kashmir with red Seal

→ verkaufen

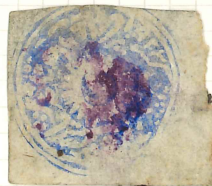


ISC (x/92)



"papers" Laid

Used in Jammu with purple Seal



Used by March 14th 1867 cover in combination India 1 Anna stamp to Amritsar (outside the State)



Double print seen on cover at Christies

7600

Warwick F. G. Series by Frank Godden Ltd. Made in England.

4 Annas Ultramarine

JK7

SG. 6

incomplete strike

complete strike, but cut round

" $\frac{1}{4}$ " (rupee) written
in Native manuscript
heavy pencil on back



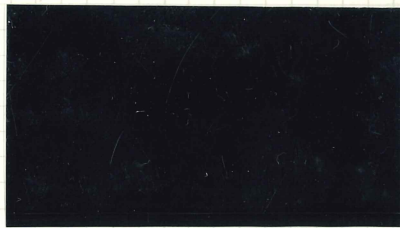
"4 annas" in English
manuscript ink and " $\frac{1}{4}$ "
in Native manuscript heavy
pencil written on back

4A → $\frac{1}{4}$ r
↘ "4"

"pspet"
Seen used in Kashmir
("wooden")

9/ → (2)

Used in Jammu with purple seal



check type

OK

φ23 10/10

For Use in Jammu and Kashmir:

1866 (grey-black) (ultramarine)

Watercolour on native paper

591

ISC 18714

cent. Royal



red Srinagar seal 0



Royal Blue 2

pen-cancelled (M. K. P. O.)



red 0

Strawbe colours (Reprints)
on native

bright purple



chestnut

as early

Kashmir reprints

1A

not listed by S+M

For use in Jammu only: CIRCULARS

1867-1874: 4A only (supplementing the small Jammu plate) - see the Rectangulars

1874-76 SPECIAL PRINTINGS in RED (shades)

(ex-Eaton) "orange-vermillion"
really "Indian Red"
ISC '97/1

ORANGE-RED

SG 11-13

same shade as

under reprints →

all
to be
in
1874.

(R?)



1/2A

ISC

Boyal

1A
RPSL

ISC
89/1



4A

ISC
97/7



RED

SG 8-10

OR (?)



1/2A

ISC
89/7



1A

ISC
89/1



4A
RPSL

ISC
97/1



JAMMU SG 6.
for comparison

1877 (July) OIL COLOUR in RED (shades)

(RED?)



from my reprints!

BROWN-RED



1/2A



1A

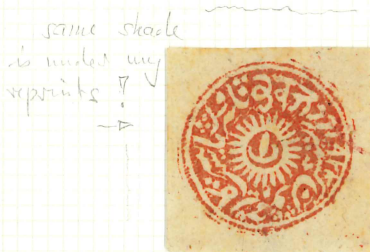


4A

on laid paper



ISC
92/1



same shade
is under my
reprints →



for comp?

REPRINTS

on wove paper

for
comparison



on
NATIVE
paper



For use in Jammu only:

CIRCULARS

1874-76 Old Colours (black, blue)

DEEP BLACK

SG 14, (15), (16)



1/2



1/2A



1/2A

1 & 4A

not known used

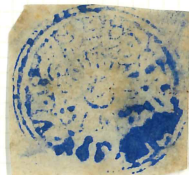
OIL
(?)

BRIGHT BLUE

SG 17, 18, (19)

blue

1/2



1A

4A
not known
used

1A E
with
faint
black
stamps
on
back?
SG 18



1877 (July/August) OILCOLOURS (black, blue)

BLACK

SG 29, -, -



1/2



R. (?)

SLATE BLUE

SG 32, 34 (nr 4A)

1/2A
V



1A

ISC
89/4

on European laid paper

BLACK

SG 41, -, -



1/2A

SLATE BLUE

SG 44, 45, 46

1/2A

V

V

V

1A

V

V

4A

V

V



1A

R. (?)

REPRINTS on native paper



4A (N)
Reprint?
(too badly
printed?)



1/2A



1A



1A



4A

REPRINTS

on wove paper



1/2



4

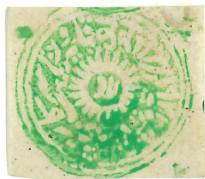


4

For use in Jammu only CIRCULARS

1874-76 New Colours (green, yellow)

EMERALD



1/2A



1A

1/4A



duplicate 1/2A

YELLOW (6 1/2 ph)

1/2A

1A

1/4A

yellow

compare Kashmir. 97

1877 (July) OIL COLOURS (green, yellow)

SAGE GREEN



1/2A



1A



4A (reprint, probably)

on European laid paper

SAGE GREEN

4A only

DULL YELLOW



1/2A only

REPRINTS

on wove paper



1/2A



1A

on
native
paper



4A

For use in Jammu only:

SG 52, 53; 3

1867 (Sept.?) 1/2 A + 1 A grey-black

(+ 4 A circular?)



1/2 A [4] 0

ISC 89/11



1/2 A [1] jet-black
SG 69a

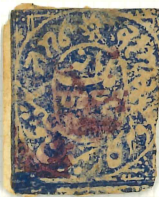
1867 (Sept.) 1/2 A + 1 A indigo (deep ultramarine,
deep violet blue)

+ 4 A circular (indigo)

SG 54-59; 7



1/2 A [2] 0



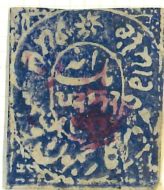
1 A 0

0

1 A 0
BPA



1/2 A [1] 0



1 A 0
BPA

DAN '18
1868 (June) 1/2 A + 1 A red (orange-red, orange,
carmine-red)

DAN '18 + 4 A circular (red, orange, carmine-red)
SG 60-65; 10, 13a, 13b



1/2 A [1]

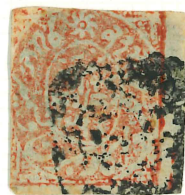
RED



1 A [3]



4 A [early protg.] [1-2]



1/2 A [4]
ISC 80/1
ORANGE
-RED

SHEET
1/2 1/2
1 1/2



1/2 A [1]
ISC 89/11
ORANGE



1/2 A [4]
ISC 80/1
1872
(AUGUST)



[3]

[2-4]

CARMINE
-RED



shades
of RED

[1]

1877 (July) Oilcolour 1/2 A + 1 A red (brown-red)

SG 70-73



1/2 A [2]
ISC 92/11



1 A [3]
ISC 80/1



1/2 A [4]

0
phi 7 1/2 1/2



72 [1]



72 [4]

For Use in Kashmir



1/2 A (simple die)

sg 87



1/2 A sg 88



1 A sg 87

Plate I 1/2 A and 1 A in black
198 proof

1 A blue
sg 98

Plates I and II and single dies in different colours



1/4 A sg 90



1/2 A sg 91/92



1 A sg 94/96



2 As sg 97



4 As
sg 99



8 As
sg 100



1/4 A PROOF SHEET (on laid paper)
(no rivets!)

For Use in Kashmir

Plate I: 1/2 A (20) and 1 A (5 stamps)



1/2 A violet blue (sheet of 20)

(from Evans Collection)



1 A orange (sheet of 5)



1 A REPRINT (on native paper)



1/4 A black (sheet of five)



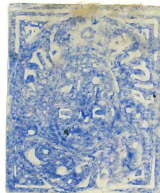
2 A REPRINT (on thin laid)
(RIVETS?)

1/2 Anna plated

1



3



5



7



9

10



14



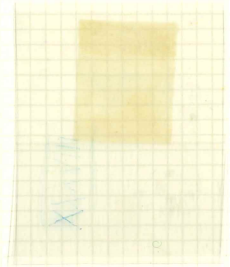
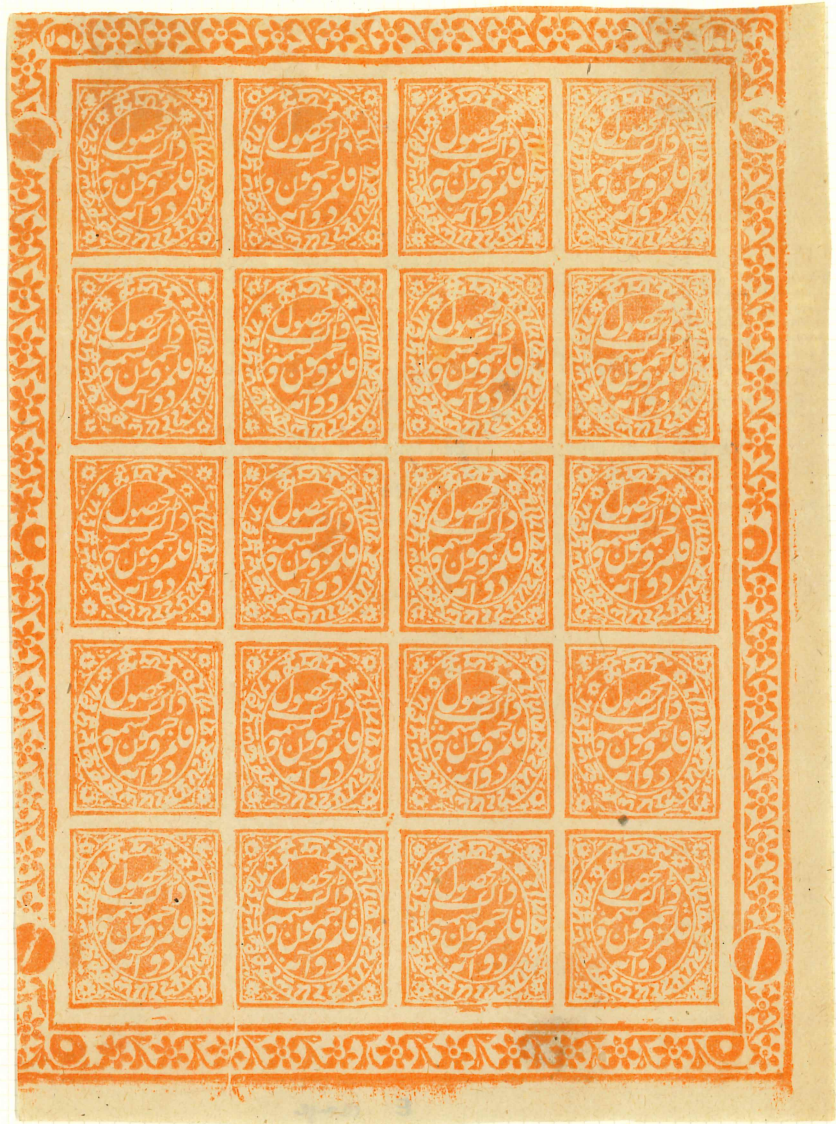
16

17



20

10 13C ()



130 a



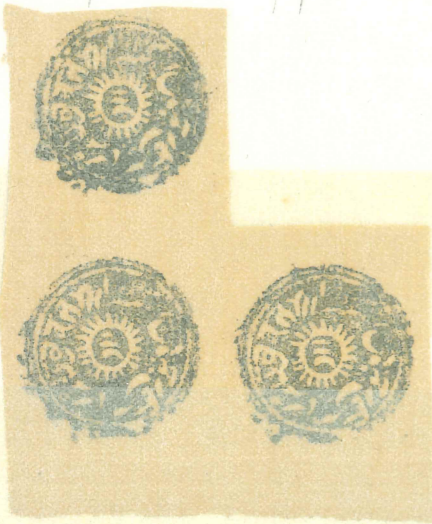
LEH

Jumma "missin" di "forgeries"

native
or 6 leid



European laid paper



White wood paper



Toned wood paper



Telegraph Stamps



1882



1896



1879



1865

+ 1908



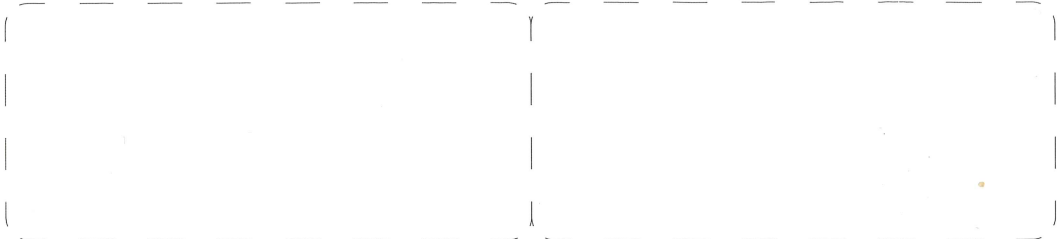
"missief die" on native laid paper

2A. Skete II □





David Feldman
INTERNATIONAL AUCTIONEERS



deep
violet-
blue

Price

No. 63,725

B. P. A. Expertising Limited
London - England

EXPERT COMMITTEE

13th September, 2004

The Committee is of the opinion that the

*INDIAN FEUDATORY STATES - Jammu: 1867 rectangular.
in deep ultramarine, water-colour on native paper.
(SG57), used, with magenta seal, is genuine. ✓*



P.P. Harris

Neither the Company nor the members of the Expert Committee can accept any liability, either collective or individual, for any opinion expressed.

No. 71,124

B. P. A. Expertising Limited
London - England

EXPERT COMMITTEE

.....31st March, 2008.....

The Committee is of the opinion that the

INDIAN FEUDATORY STATES - Jammu: Native envelope, franked on reverse with 1867 rectangular. In deep violet-blue, water-colour on native paper (SG59), cancelled by magenta seals, used on fragment, with magenta seal cancel, is genuine. ✓



P.P. Harris

Neither the Company nor the members of the Expert Committee can accept any liability, either collective or individual, for any opinion expressed.