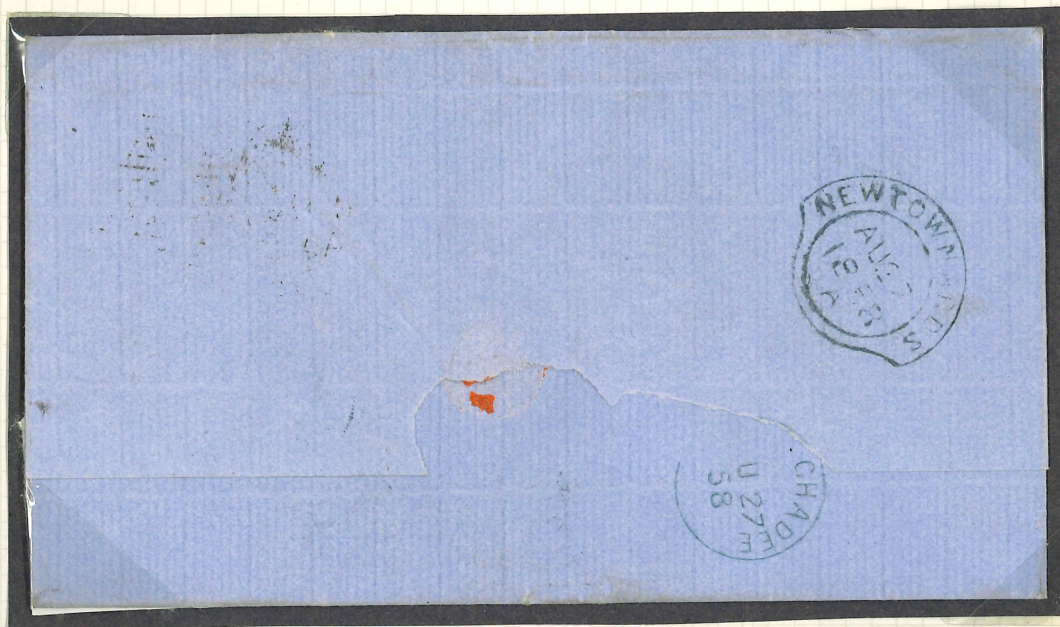


1858 Entire, Glasgow to Donaghadee, franked by 1d red,  
reverse with small "Donaghadee" cds and signet ring  
type "Newtownards" datestamp in blue.



1858 (17 FE) Entire, Letterkenny to Newtownards, manual  
"missent to" with cds of Newtownstewart and signet ring  
cdsof Newtownards. Note this is code B.

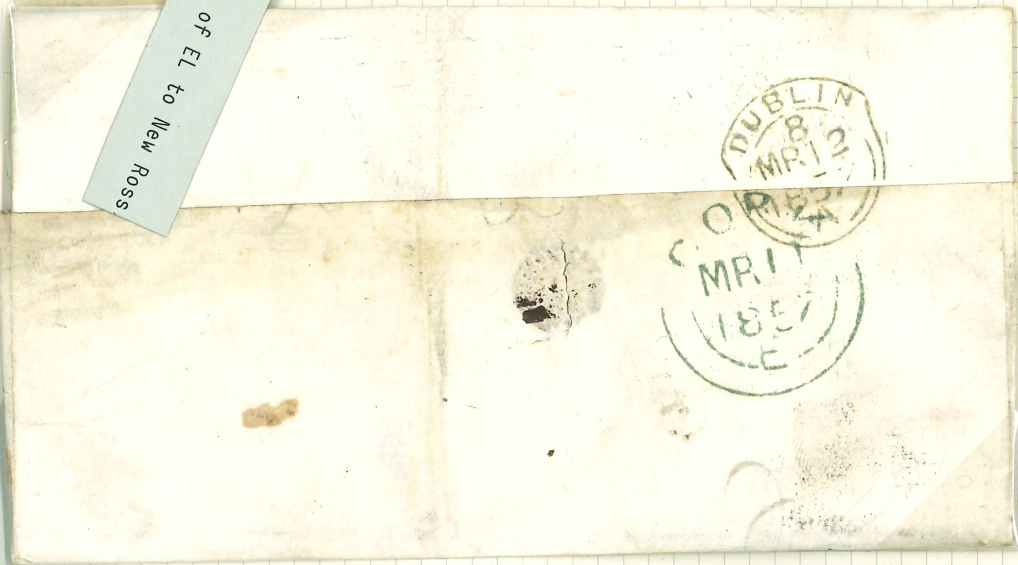






41-5-3

Flap of E1 to New Ross









16R  
Southampton  
Patrick Garvey  
Jerez de la frontera  
Calle de San Juan de los Rios  
Cadiz

PAID  
1858  
JUN 6  
PAID AT  
JUN 5  
1858

Via France **LR**  
Patrick Garvey Esq  
Jerez de la Frontera  
Spain

PAID AT  
DUBLIN  
9 JULY 1858

ANTIL  
9  
JULY  
1858  
AMB. CALAIS



**LR** Via Southampton  
Patrick Garvey Esq  
Jerez de la Frontera  
Care of Messrs de la Cueva  
Cadix

PAID AT  
JULY 25  
1858  
DUBLIN

PAID AT  
JULY 25  
1858



Doctor Jacob  
Maryborough

121  
\*\*\* F

KINGSTON  
F  
AU 2-  
60

POSTAGE  
289  
ONE PENNY H

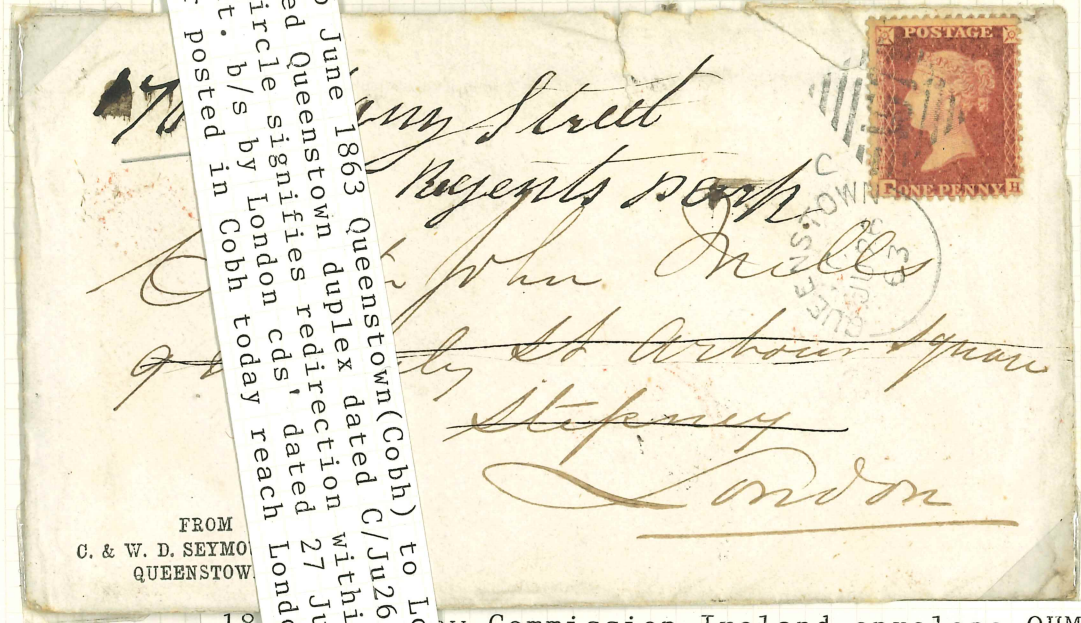
Patrick King Esq  
(Sobr)  
35 Upper Dorset St  
Dublin

P85

T. Hall Esq  
P.M.  
William King Esq  
Monkstown House  
Monkstown

KINGSTON  
F  
AU 2-  
60

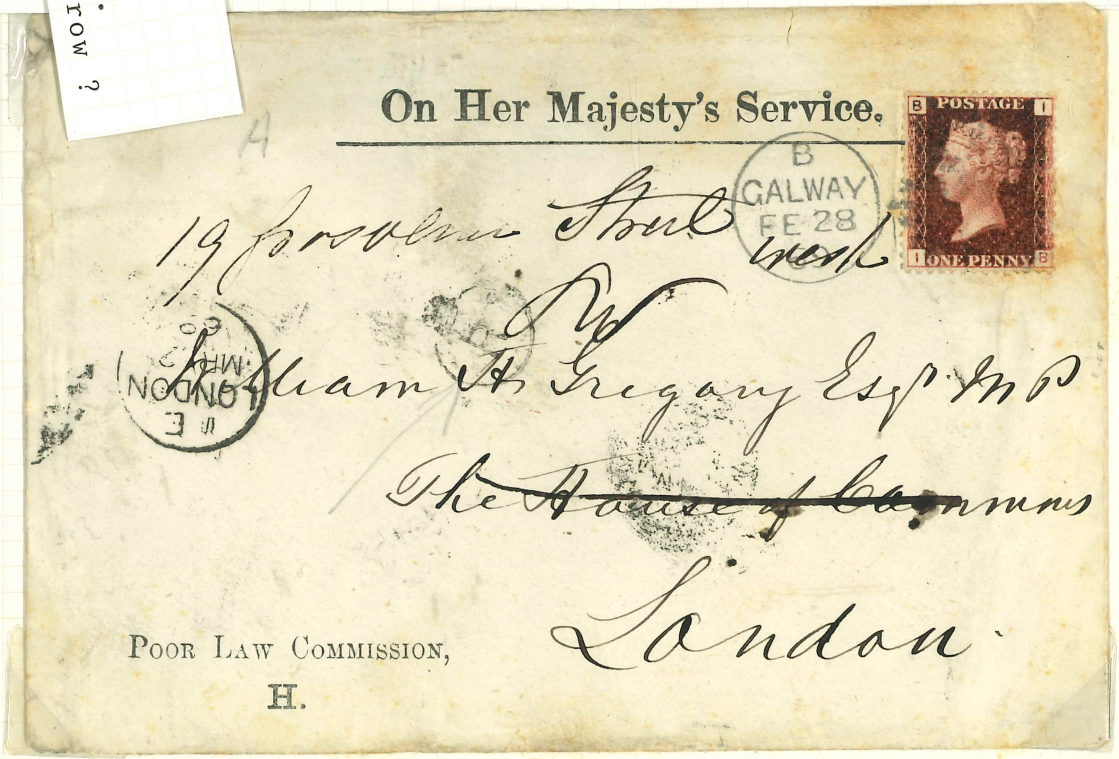
POSTAGE  
289  
ONE PENNY H



d 26 June 1863 Queenstown (Cobh) to London.  
 marked Queenstown duplex dated C/Ju26/63  
 d circle signifies redirection within the  
 rict. b/s by London cds' dated 27 Ju & 29 Ju.  
 ter posted in Cobh today reach London tomorrow ?

FROM  
 C. & W. D. SEYMOUR  
 QUEENSTOWN

18. Poor Law Commission Ireland envelope OHMS, but stamped,  
 fr to London 1d red/brown stamp, plate 119 cancelled  
 by duplex dated B/FE28/69 London receiver for 29 FE  
 and ion mark also on front. b/s 'London S.W/MP/MR1/69  
 and W/AS/MR2/69.



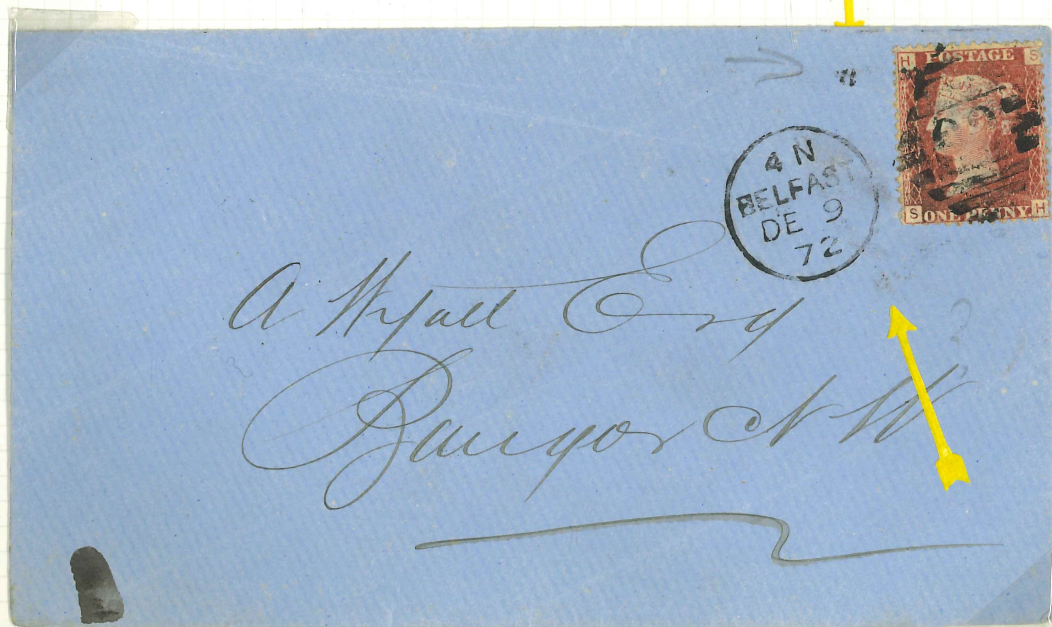
On Her Majesty's Service.

POOR LAW COMMISSION,  
 H.

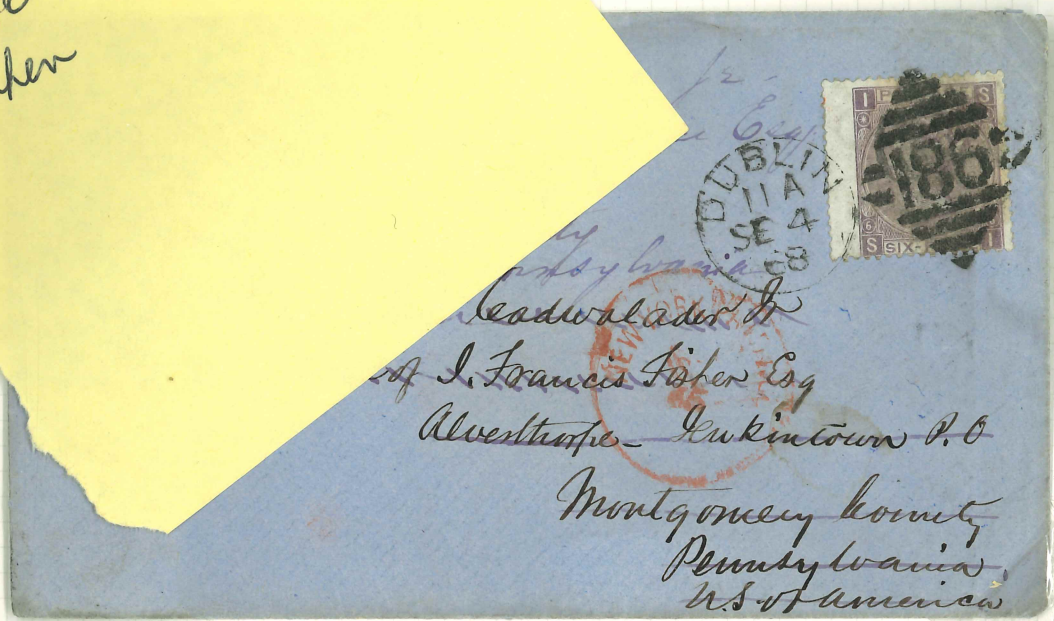
1d red ,plate 99 tied to cover by a Dublin 'Pivot',  
Pearson Hill machine cancellation. Note the screw  
marks



1d red tied to cover by the scarce Belfast 'Pivot'  
machine duplex. Again the "tell tale" screw marks.



1867-80 b<sup>7</sup> lilac with  
byphen



281

41-5-13



281



281

41-5-15