

T47d \*  
20,-  
T47\*/\*\*  
1,-

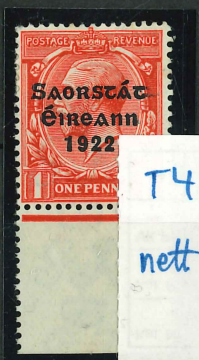
Thom Saorstát Overprint on ½d pair with broken letters



Thom Saorstát Overprint on ½d strip of 3, centre stamp with "S over é" from R.7/10.



T47e\*\*  
20,- + 100%  
40,-  
T47\*\*  
1,-



T48 \*  
nett 20,-



Thom Saorstát Overprint on ½d horizontal pair with gutter, right stamp with "S over é" from R.10/10

Thom Saorstát Overprint on 1d red with "kiss-print": slight doubling of Overprint

Thom Saorstát Overprint on 1 ½d pair, left stamp with variety "dropped 2"



T48g analog  
positional  
block  
nett 60,-

Thom Saorstát Overprint on 1d corner block of 4, bottom left stamp with "guide block"



Thom Saorstát Overprint on 1d strip of 4, second stamp with "S over é" from R.10/10

T48k\*\*  
25,-+100%  
50,-  
T48x3\*\*  
2.40



Thom Saorstát Overprint on 1d combined on piece with GB 1/2d without Overprint, probably from legal use on a "Paquebot" franking

48 in a  
Paquebot  
red franking  
# 40,-

Thom Saorstát Overprint on 2 1/2d, strip of 4 with red Offset on the gum

T51\*\*  
X4  
3x  
72,-



Thom Saorstát Overprint on 2d block of 4, bottom left stamp with "chipped 2"

T50 in a  
plate-able  
block. RR.  
nett 30,-

Thom Saorstát Overprint on 2 1/2d marginal block of 4, top right stamp with error MISSING ACCENT R.15/12

T51a\*\*  
150,-+100%  
300,-  
T51x3\*\*  
@6,- 18,-



T53  
positional  
variety  
nett 20,-



T55\*\*  
x2  
3x  
30,-



T58\*\*  
2x 60,-  
T58\*\*  
30,-

Thom Saorstát Overprint on 4d bottom marginal with variety "short 1" R.20/5

Thom Saorstát Overprint on 6d vertical pair with superb Overprint offset on the gum

Thom Saorstát Overprint on 1/- vertical pair, top stamp variety "dropped 2"

Thom Saorstát Overprint in dull black (issued Proof) on 1½d with variety :922 instead of 1922



T53c\*\*  
80,- \*1000  
160,-  
T53\*/\*\*  
93,-

Σ 253,-  
++

Thom Saorstát Overprint on 4d marginal block of 20, lower right stamp with error MISSING ACCENT R.15/12 ex T.E. Field collection

Thom Saorstát Overprint on 6d with watermark error inverted and reversed



T55wc\*\*  
75,- + 5070  
112.50

T58x2 \*\*

Thom Saorstát Overprint on 6d shades dull purple and reddish purple



Thom Saorstát Overprint on 9d shades pale green and deep dull green



Thom Saorstát Overprint on 1/- shades pale bistre and deep golden bistre



Thom Saorstát Overprint on 9d with displaced variety "S over e" from R.10/10



T56e \*\*  
70,- + 10090  
140,-



T58 \*\*  
70,- x2  
50,-

Thom Saorstát Overprint on 1/- bottom left with variety "raised 2" from Plate 2

Thom Saorstát Overprint on 1/2d marginal block of 4, lower right stamp with Overprint error "Missing Accent inserted by hand" from R.15/12 (B.P.A. Certificate 1968)

T47b \*\*  
105,- + 10090  
210,-  
T47x3 \*\*  
210

Harrison Saorstát Overprint  
for stamps in rolls (coils),  
complete 4 values in pairs  
joined horizontally

TJ 9  
100.-



10Ta\*  
175.-

Harrison Saorstát Overprint  
for stamps in rolls (coils),  
complete 4 values with the  
clichée error "Long 1" in date

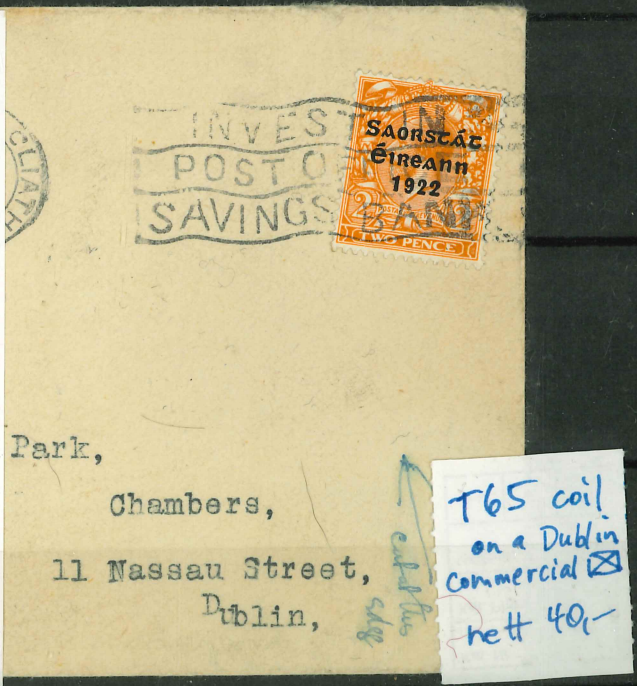


Saorstát Overprint Controls:  
The actual Control consists of the letter of the Warrant combined with the year the actual printing was done



Harrison Saorstát Overprint for stamps in rolls (coils), 2d used on local Dublin cover in period (up to 1925)

CL 122 *	£ 1.50	156 *	10.50
126 *	£ 1.00	161 *	4.50
135 *	8.50	165 *	25.00
137 *	7.00		
123 **	4.00		
143 *	12.00		
145 **	12.00		
150 ** + Var.	52.00		
149 *	8.00		
152 **	14.00		
151 *	5.00		
		Σ	
		£ 205.50	



T65 coil on a Dublin Commercial net 40-