



David Feldman
INTERNATIONAL AUCTIONEERS

The TOMASINI COLLECTIONS

of Classic
Great Britain
& Sicily



Classic Sicily (Part I)

Thursday, March 26, 2026 at 17:00 CET
Everness Hotel & Resort – Chavannes-de-Bogis, Vaud, Switzerland







David Feldman
INTERNATIONAL AUCTIONEERS

The TOMASINI COLLECTIONS

of Classic
Great Britain
& Sicily

Classic Sicily (Part I)

Thursday, March 26, 2026 at 17:00 CET

Everness Hotel & Resort
Chavannes-de-Bogis, Vaud, Switzerland



© 2026 David Feldman SA

All rights reserved

All content of this catalogue, such as text, images and their arrangement, is the property of David Feldman SA, and is protected by international copyright laws.

Acknowledgement:

Catalogue numbers and most images of details of retouched stamps in this catalogue are referenced from *Sassone, Antichi Stati Italiani Regno d'Italia 1850-1900* (85a edizione, 2026).

Printed in the UK by Parly & Son Printers Ltd.

Cover images: front, lot 30093; back, lot 30202

Colour and size disclaimer. We strive to present the lots in this catalogue as accurately as possible. Nevertheless, due to limitations of digital scanners, digital photography, and unintentional variations on the offset printing presses, we cannot guarantee that the colours you see printed are an exact reproduction of the actual item. Although variations are minimal, the images presented herein are intended as a guide only and should not be regarded as absolutely correct. All colours are approximations of actual colours. Images sizes may also be different from the actual sizes of the items.



David Feldman
INTERNATIONAL AUCTIONEERS



We strive for excellence

and we go the extra mile for our consignors

Contact us to discuss your consignment
to our auctions at info@davidfeldman.com



The TOM COLLEO



1



2



3



Address and towards the RIGHT HAND SIDE



4



5



6

(1) 1859 2 Gr. plate II, porous paper (NA), ultramarine in mint horizontal pair. **An extremely rare showpiece.** (2) 1859 1/2 Gr. plate I, porous paper (NA), deep orange, horizontal pair, position 93-94, **showing fresh original brownish gum.** (3) 1859 1 Gr. plate I, rust brown (bruno ruggine), mint pair, positions 24-25. **Exhibition showpiece.** (4) 2Gr. plate I, porous paper (NA), bright blue (azzurro vivo), unused bottom left corner sheet marginal block of seventeen, **a rare and impressive unrecorded multiple.** (5) 1859 1Gr plate I, state II, grayish olive green (verde oliva grigastro). (6) 1/2Gr. plate I, porous paper (NA) olive yellow (giallo oliva) in very fine large margined single from the bottom of the sheet; **extremely important unused shade.** (7) 1840 VR Official 1d Black

MASINI CTIONS

of Classic Great Britain & Sicily



7



8



9



10



11

(TF-TL) phenomenal lower right corner marginal inscription strip of seven, mint, plate number "A"; the unique largest known multiple with a plate letter. (8) The Famous Ferry Mint Block of Six from Plate Eleven: 1840 1d Black, Plate 11 (AH-CI), a marvellous upper sheet marginal block of six, bearing the rare and highly desirable inscription "AND SIDE of the Letter. In Wettin"; a superb and exceptionally rare multiple. (9) 1867-80 2s Brown Spray Fresh Mint Pair (NF-NG); exceptionally rare. (10) 1847-54 10d Brown, die 2 marginal block of four, mint, showing a full sheet margin at right. (11) 1840 2d Blue, Plate 1 (SI-TL) exceptional block of eight, used on fragment, with deep, rich shade and excellent overall quality.

Auction Bidding Options

There are several ways to bid in our auctions (if you cannot attend in person). Bids can be made by email, telephone, and through our Web site.

Written Bid Form

You are invited to bid before the auction, using the bid forms enclosed with the catalogue.

- Write down the lot numbers of interest to you and your bids on them
- Complete your personal information
- Sign the form on the last page of this catalogue and send it either:
 - by email: info@davidfeldman.com
 - by post: David Feldman SA,
PO Box 29, Chemin du Pavillon 2
1218 Le Grand-Saconnex, Geneva, Switzerland

Bids initially made by telephone must be supported by written confirmation by post prior to the sale.

Phone Bids During the Auction

If you wish to bid by phone, you should confirm in writing 48 hours before the auction indicating the lot numbers you wish to bid on and phone number(s) where you can be reached during the auction. Due to the availability of multiple other bidding options, telephone bidding is accepted at the discretion of David Feldman SA. One of our philatelists will call you a few lots in advance of your first lot of interest, and bid for you directly during the auction.

Online Bidding

Participate in any David Feldman auction from the comfort of your home, office, or while travelling.

New Clients

If you are a new client, please follow these steps to save your pre-auction bids and/or create a live bidding account.

- Select "My Account" on www.davidfeldman.com and follow the steps to create your personal account
- During the account creation process you will be sent a request to complete a new client registration form, where you will be asked to confirm your contact details and provide credit references and proof of identity.

Pre-Auction Bidding

Once your details have been confirmed, you will then be able to enter any bids in advance of the auction via our web site.

- Log-in to your account
- Browse the auction lots to find those items that interest you
- Enter the maximum amount you want to bid for any lot
- Click the "Bid" button
- Repeat for each desired lot
- Monitor your bids to see if you have been outbid

Live Auction Bidding

You may also bid live in any of our auctions via the Internet. Follow your targeted lots on screen and enter your bids with the confidence that you will be bidding as if you were in the auction room itself.

- Click on the "Live Auction" button on the home page
- Log-in to the auction
- Follow the auction and click the "Bid" button to register your bid with the auction
- Defend your bid(s) as needed

Reminder – These are the instructions for existing clients who have already made auction bids with us using existing credentials. If you are a new client, or an existing client who has not bid via the internet before, please ensure that you create your account **at least 48 hours before the auction** and ensure that you provide us with the information requested during this process without delay.



Auction Agenda

Switzerland Specialised Auction

+

The
TOMASINI COLLECTIONS

of Classic
Great Britain
& Sicily

DATE	TIME (CET)	CATALOGUE	CURRENCY
Wednesday, March 25	14:00	Switzerland	CHF
Tuesday, March 26	14:00	The Tomasini Collection of Classic Great Britain (Part I)	GBP
	17:00	The Tomasini Collection of Classic Sicily (Part I)	CHF

The auction will take place at the **Everness Hotel & Resort**
Les Champs-Blancs 70b, 1279 Chavannes-de-Bogis, Vaud, Switzerland

Auction Bidding Agents

Commissionnaires / Kommissionäre

David Feldman SA is pleased to handle your bids, representing you as if you were present in the auction room.

However, if you would like to be represented by a professional bidding agent, we list below a number of persons who regularly bid at our sales on behalf of clients.

David Feldman SA prend soin de vos offres lui parvenant directement et vous représente au mieux de vos intérêts comme si vous étiez dans la salle des ventes.

Dans le cas où vous préféreriez néanmoins passer par un commissionnaire, nous listons ci-après certaines personnes prenant régulièrement part à nos ventes en représentant des acheteurs.

David Feldman SA ist gerne bereit, Ihre Gebote so zu vertreten, als wären Sie selbst im Auktionssaal anwesend.

Wenn Sie jedoch von einem professionellen Bietagenten repräsentiert werden möchten, finden Sie unten eine Liste von Personen, die regelmäßig bei unseren Auktionen im Namen von Kunden mitbieten.

Germany

Jochen Heddergott **Tel** +49 89 272 1683
Mobile +49 151 4040 9090
Email jh@philagent.com

Lorenz Kirchheim **Tel** +49 40 645 32 545
Email lorenz.kirchheim@t-online.de

Great Britain

Trevor Chinery **Tel** +44 7527444825
Auction Agency **Email** trevortrilogy@aol.com
Website philatelic-auction-agent.co.uk

Nick Martin **Mobile** +44 770 376 6477
Email nick@martinlincs.uk
Website loveauctions.co.uk

Italy

Giacomo Bottacchi **Mobile** +39 347 -922 0225
Email gbstamps@iol.it

USA

Mark Cwiakala **Tel** +1 464 204-2058
Email mark@cwiakala.co

Purser & Associates **Tel** +1 857 928 5140
Email info@pursers.com



David Feldman
International Auctioneers

Chemin du Pavillon 2
1218 Le Grand-Saconnex
Geneva, Switzerland

Phone & WhatsApp +41 22 727 0777
Email info@davidfeldman.com



Payment Instructions

Instructions de Paiement / Zahlungsanweisungen

Bank Transfer / Transfert Bancaire / Banküberweisung

UBS - Bahnhofstrasse 45, 8001 Zurich, Switzerland

Swiss Francs (CHF)

Account 0215-251810.01Q
IBAN CH200021521525181001Q
Swift / BIC UBSWCHZH80A
Beneficiary David Feldman SA

US Dollars (USD)

Account 0215-251810.61E
Iban CH430021521525181061E
Swift / BIC UBSWCHZH80A
Beneficiary David Feldman SA

Euros (EUR)

Account 0215-251810.60B
IBAN CH110021521525181060B
Swift / BIC UBSWCHZH80A
Beneficiary David Feldman SA

British Pounds (GBP)

Account 0215-251810.62M
Iban CH370021521525181062M
Swift / BIC UBSWCHZH80A
Beneficiary David Feldman SA



Many clients have found the option of paying by Wise Payments (www.wise.com) both cost efficient and timely. We highly recommend this option for those clients unable to pay by bank transfer.

Credit card / Carte de crédit / Kreditkarte

Accepted credit cards

For invoices of less than CHF / EUR / USD / GBP 2'000

- Visa
- MasterCard
- American Express (charges made in CHF only)

Please note that all credit card payment will incur an additional charge of 3% plus possible other fees, such as £10 standard fees on GBP payments. Please also note that credit card payments usually take 10-20 working days to be credited to our account and if you pay in this manner, we kindly request your patience.

Please note that we are unable to accept payment by cheque. We kindly ask clients to use one of our other accepted payment methods. Thank you for your understanding.



Our Team

DIRECTION



Joel Feldman
Managing Director



David Feldman,
RDP(I), FRPSL
Founder &
Director Emeritus



Nalis Feldman
Head of Administration
and Human Resources

PHILATELY

Geneva



Ricky Verra, FRPSL
Director of Philately
(Great Britain, British
Empire, Asia, Olympics)



Allan Westphall, PhD
Senior Philatelist
(Europe Classics, Dutch
Colonies, Scandinavia)

Ireland



Marcus Orsi
Director Emeritus
(Middle East, Ireland,
Europe, Americas)

United Kingdom



Guy Croton
Senior Philatelist & Rep. UK
(Great Britain, British
Empire)



Robert Murray
Rep. Scotland
(All World stamps &
collections)



Tony Banwell
Rep. UK
(China, Great Britain, Asian
Stamps & Postal History)

Portugal



Antonio Guerreiro
Rep. Portugal, Spain &
Latin America
(Portugal & Colonies)

France



Jean-Roger Bardeau
Senior Philatelist
(France & Colonies, All
World Collections)



Jean-Luc Klein
Senior Philatelist
(France, Germany &
Possessions)



Andrea Diano
Rep. Paris Region
(France & Colonies)



Derrick Mitchel
Rep. Caribbean
(West Indies)

Caribbean

United States



Dr. Vivek Chopra
Head of USA
(India & Indian States)



Bruce Weinman
Rep. East Coast
(United States)



W. Danforth Walker
Ambassador USA
(Indian States)



CONSULTANTS

Gary Dubro	USA
Tim Francis	UK
David MacDonnell	Ireland
Philip Newby	UK
Michael Tseriotis	Greece
Michael Vojta	Austria

AGENTS

Jorge Del Mazo	Argentine
Carlos Hernández Rocha	Uruguay
Bill Schultz	Canada & USA
Jean-Jacques Tillard	International
Pierre Wertheimer	International

LOGISTICS + CLIENT SERVICE



Steve Bodenne
Head of Logistics



Rodolfo Nascimento
Logistics Assistant



Ratsamee Feldman
Special Projects



Nida Delplanque
Administration &
Client Service

CREATIVE HUB (MARKETING + IT)



Alex Porter
Head of Marketing &
Senior Graphic Designer



Eva Mondehard
Marketing Coordinator



Francesco Baita
Head of IT & Senior
Multimedia Creator



David Feldman
International Auctioneers

Chemin du Pavillon 2
1218 Le Grand-Saconnex
Geneva, Switzerland

Phone & WhatsApp +41 22 727 0777
Email info@davidfeldman.com



www.davidfeldman.com

Entrust us with your

SMALL OBJECTS of GREAT VALUE

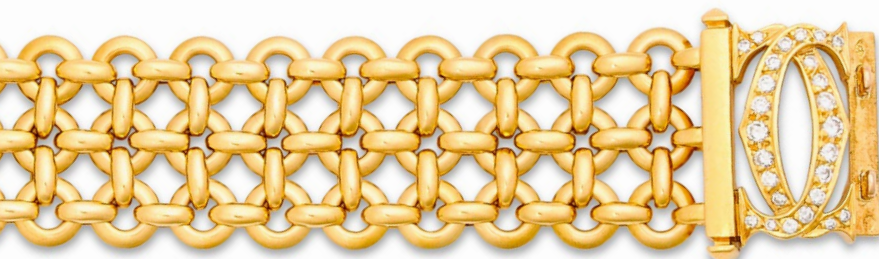
COINS & BANKNOTES – WATCHES – JEWELLERY – PAINTINGS – OBJETS D'ART, etc.

Whether they have financial or sentimental value, we cherish your treasures as much as you do!



Gupta Empire – Kumaragupta, c. 415–455, AV dinar, 7.77 g. (18 mm), only 17 examples known, with 11 in museums.

Sold for CHF 107'625, Silk Road I Auction, December 2024





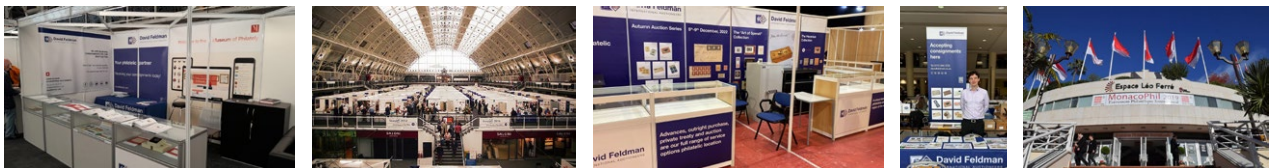
Meet our Philatelists!

We will be present at the following shows:

- February 4-8 – Dubai World Stamp Exhibition, Dubai, UAE
- April 23-25 – Salon Philatélique de Printemps, Calais, France
- April 24-26 – Westpex 2026, San Francisco, USA
- May 23-30 – Boston 2026 World Expo, Boston, USA
- June 26 - July 1 – Macao 2026, Macao, China
- July 17-18 – York Stamp & Coin Fair, York UK
- August 27-31 – Asian International Stamp Exhibition, Bandung, Indonesia
- August 28-30 – Napex 2026, USA
- October 22-24 – Internationale Briefmarken-Börse, Ulm, Germany
- October 28-31 – Stampex 2026, London, UK
- November 20-25 – Philataipei 2026, Taipei, Taiwan
- December 3-5 – Monacophil, Montecarlo, Monaco

On dates to confirm:

- Salon Philatélique d’Automne, France



In addition to personally meeting our multilingual, expert philatelists and chatting with them, at our stand at any exhibition, you can benefit from:

- Getting an appraisal of your stamps without any commitment on your part
- Advice on buying and selling your collection or any philatelic item
- Getting to know the terms and conditions of our auctions and Private Treaty options
- General information about the hobby of stamp collecting or a particular collecting interest
- Viewing and taking home catalogues of our upcoming auctions
- Potential viewing of lots of our upcoming auctions



Viewing

Before March 25 (by appointment)

**David Feldman
International Auctioneers**

Chemin du Pavillon 2
1218 Le Grand-Saconnex
Geneva, Switzerland

Book an appointment:
+41 (0) 22 727 0777
info@davidfeldman.com

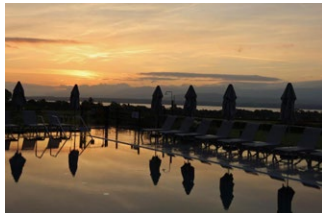
March 25 & 26

Everness Hotel & Resort

Les Champs-Blancs 70b
1279 Chavannes-de-Bogis
Vaud, Switzerland

Just a 10-minute drive from
our headquarters in Geneva.

From 10:00 to 14:00



Your first night at the Everness is on us!

When you come to Switzerland for viewing,
your first night's stay at the Everness Hotel
& Resort will be paid by us.

Please, contact us before booking.



**David Feldman
International Auctioneers**

Chemin du Pavillon 2
1218 Le Grand-Saconnex
Geneva, Switzerland

Phone & WhatsApp +41 22 727 0777
Email info@davidfeldman.com



www.davidfeldman.com

Introduction

Dear Friends and Fellow-Collectors,

The introduction and presentation of the Tomasini collections motivates me to devote this preface appropriately to **QUALITY** — we might even say, “**TOMASINI QUALITY.**” The Italian philatelic community for almost a century has surpassed all other countries in its emphasis on the condition of a classic stamp, especially its colour and, more particularly, the size of its imperforate margins. A stamp with huge margins can sometimes be considered more valuable than a block or other multiple in less fine condition, by a factor of five or even ten. This philosophy was introduced and promoted by great Italian dealers and experts such as Emilio, Alberto and Enzo Diena, Giulio and Alberto Bolaffi, Renato Mondolfo, Luigi and Maurizio Raybaudi and Giangiacoamo Orlandini, to mention only a few of the many great proponents, now unfortunately no longer with us.

Standing like a tower above these traditional Italian connoisseurs was Mario Tomasini. His collecting interest was not only in refinement but also in scope: a vast assemblage of extraordinary collections, each bearing his trademark standard of excellence. They covered mostly European countries, some being the finest ever formed, alongside a passion for great rarities in outstanding state of preservation. It was a great surprise to me to learn that he had already passed away in 1965 at the age of only 59. What a philatelic empire he would have built had he lived another few decades, to rival those of Ferrary, Caspary and Burrus. In terms of overall calibre, he had already surpassed those philatelic luminaries.

I recall the first viewing visit by Marcus Orsi and myself, when we had the greatest pleasure turning each album page and being mesmerized by the sheer beauty, freshness and, of course, the extraordinary condition of items such as we had not encountered in decades. David Feldman SA had the honour to present Tomasini’s Grand Prix Romania in 2006. It was one of the company’s milestone auctions, realizing world-record prices, hardly a surprise considering the combination of great rarity and exceptional quality.

Once again, we have the great privilege to present, this time, Tomasini’s Great Britain, with some of the greatest rarities, which were an invited exhibit at the Court of Honour in London in 1960 and his Grand Prix Sicily, which won that top prize in Palermo in 1959. Perhaps after these auctions the philatelic world will refer to a new qualification in its descriptions, a new standard: “**Tomasini Quality.**”

David Feldman, RDP(I), FRPSL
Founder & Director Emeritus

Geneva, January 2026



The TOMASINI COLLECTIONS

of Classic
Great Britain
& Sicily



Mario Tomasini (image provided by the Tomasini family and digitally restored)



Acknowledgement:

Catalogue numbers and most images of details of retouched stamps in this catalogue are referenced from *Sassone, Antichi Stati Italiani Regno d'Italia 1850-1900* (85a edizione, 2026).

SASSONE

ANTICHI STATI ITALIANI
REGNO D'ITALIA
1850 - 1900

2026
85ª EDIZIONE

PHILATELIC JEWELS RESURFACE AFTER 60 YEARS IN HIDING

For decades, they were spoken of in hushed tones, legendary pieces assumed lost to time, locked away beyond the reach of the most serious collectors. Now, after more than sixty years in the shadows, these masterpieces return. This is not a rediscovery driven by nostalgia or sentiment. It is the re-emergence of absolute quality at a level modern philately rarely sees.

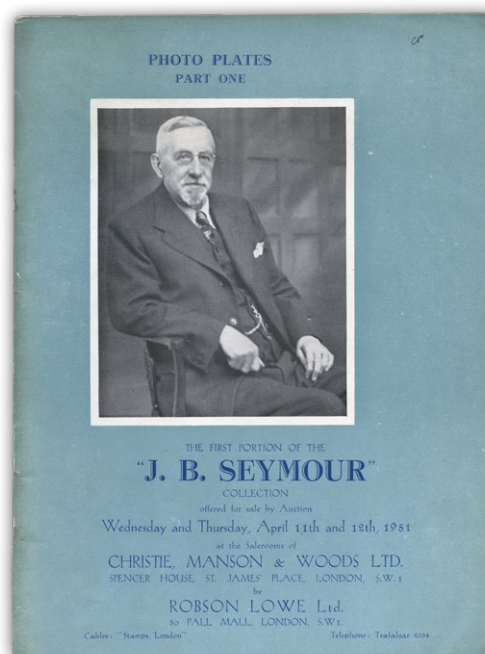
The David Feldman Company has long been inseparably linked to the name Mario Tomasini, most famously through the sale of his extraordinary Romania collection. Offered during Monaco Phil 2006, that auction did more than attract attention, it smashed world records, many of which remain unchallenged today. The Newspaper alone continues to stand as an unassailable reference point. Yet the true force of the Tomasini collection was never measured in prices, but in an uncompromising standard of quality.



December 3, 2006: David Feldman's Classic Romania auction, featuring the Tomasini/Künzi Grand Prix Collection Lot 20027, estimated €500'000-700'000, sold for €829,500. It holds to date the record of the most expensive Romanian philatelic item.

Mario Tomasini emerged in the period immediately following the Second World War as one of the most intelligent and formidable figures of a new generation of collectors. Supported by legendary Italian dealers such as Renato Mondolfo and Giulio Bolaffi, he assembled collections built exclusively on what later became known as "Italian Quality." Nothing average was tolerated; nothing questionable survived his scrutiny.

His early focus lay with the stamps of Italy and its colonies, a field he approached with genuine passion



Robson Lowe's J. B. Seymour Collection auction of 1951 was the source of some of the GB treasures acquired by Mario Tomasini.

and relentless discipline. Tomasini studied printings, varieties, and quantities with a rigour that reshaped collective knowledge. For a time, he maintained a regular column in *Italia Filatelica*, devoted entirely to the "Varieties of Italy and Colonies." In many cases, it is thanks to his work that we know today exactly how many stamps were printed—and how many were deliberately destroyed.

While continuing to lead major industrial enterprises, particularly in construction, Tomasini expanded his focus into classic philately. He began with the Old Italian States, applying the precision of an engineer and the eye of an aesthete. His intelligence, extraordinary memory, and ability to synthesise vast amounts of data allowed him to dominate every field he entered. Plate characteristics, surviving quantities, rarity of cancellations, colour classifications, nothing escaped his command.

Expert's Statement:

The vast majority of Mario Tomasini's Sicily collection in the present catalogue, has been carefully examined by Mr Giacomo Bottacchi, AIEP and signed by him in pencil with a special signature exclusive to this collection.

After thorough inspection, he has concluded that the descriptions, attributions and technical details provided are, to the best of his knowledge and belief, correct and prepared in accordance with accepted professional standards.





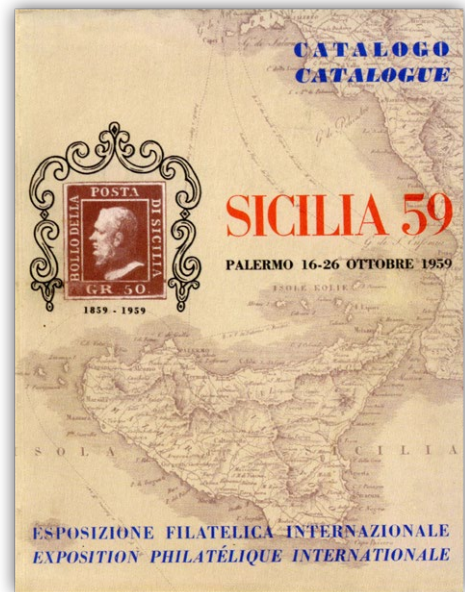
One Penny Black block of 24 from plate seven: The largest known multiple of the Penny Black in private hands. One of the supreme rarities of world philately and one of Mario Tomasini's crown jewels.

Tomasini was not content to merely absorb existing literature. He studied stamps directly and relentlessly, often reaching conclusions that advanced or corrected the accepted canon. His definitive work on the imitations created to defraud the Italian post with the 15-centesimi issues of 1863 remains a standard reference. Equally influential was his research into the tête-bêche pairs of the Papal States ½ bajocco, which he identified in all known positional relationships.

From the Old Italian States, his reach expanded naturally to the classics of Europe. At the great "Sicilia 59" exhibition, he presented major rarities from Austria, France, Switzerland, the German States, and Romania, an exhibit that earned the International Grand Prix. Between 1959 and 1965, he continued to strengthen and expand his holdings, capitalising on the exceptional material then available on the market.

His dominance was reaffirmed repeatedly. In London in 1960, he exhibited some of the most important rarities ever shown, the legendary 1840 One Penny

Black block of twenty-four, mint. In 1969, his collections earned another Grand Prix, this time in Bulgaria, cementing his reputation as a collector operating on a level few could approach.



Tomasini presented his Classic Sicily collection and won the Grand Prix in Palermo, at the International Philatelic Exhibition Sicilia 59.

Then, the collection vanished from public view. The silence only sharpened the legend. Today, its reappearance is not an event for casual observers or trend-driven buyers. The first of a series of international public auctions will take place in Switzerland on March 26, 2026 offering these unparalleled collections of Great Britain and Sicily. This will be philately at its most exacting and unforgiving, where method, scholarship, rarity and aesthetics converge without compromise. For those who truly understand what Italian Quality represents, one truth remains unavoidable:

Opportunities of this magnitude do not repeat. They surface only once in a lifetime.



A Spectacular rarity from Mario Tomasini's Sicily collection: The most important franking of the 5 Grana value and one of the only two listed 64 Grana rated covers listed in Sassone. Arguably the greatest cover of the five Grana

DAVID FELDMAN'S CERTIFICATE OF PROVENANCE

Every lot originating from the Tomasini sales will be accompanied by a Certificate of Provenance. This certificate will include the item's description, its identification, unique reference number, auction date, the chronological ownership history when available, a statement confirming that the item forms part of the Tomasini Collection and the signatures of the David Feldman Experts Committee.

Chemin du Pavillon 2
1218 Le Grand-Saconnex
Geneva, Switzerland
+ 41 (0) 22 727 07 77
info@davidfeldman.com



David Feldman
INTERNATIONAL AUCTIONEERS

The David Feldman International Auctioneers Expert Committee

certifies that the philatelic item herewith described and pictured originated from the
MARIO TOMASINI COLLECTIONS auctions with the lot number and on the date stated below.

1859 5 Gr. plate II, vermilio (vermiglio), mint with original white gum on right-hand sheet marginal block of six, positions 28-30/38-40, fresh, very fine and a rare mint multiple.

Expertise: Signed "AD" Alberto Diena, Cert. Giacomo Bottacchi, AIEP. (2026).

David Feldman
FOUNDER _____

Ricardo Verra
DIRECTOR OF PHILATELY _____

Gregor Gaetjens
PHILATELIC EXPERT _____

Ref.:	
Lot Nr.:	
Date:	



The
TOMASINI COLLECTIONS

of Classic
Great Britain
& Sicily



Classic Sicily



1859 Issue	30000-30202
Essays and Proofs	30000-30003
1/2 Grana, Plate I	30004-30024
1/2 Grana, Plate II	30025-30030
1 Grana, Plate I	30031-30057
1 Grana, Plate II	30058-30075
1 Grana, Plate III	30076-30084
2 Grana, Plate I	30085-30120
2 Grana, Plate II	30121-30137
2 Grana, Plate III	30138-30146
5 Grana, Plate I	30147-30162
5 Grana, Plate II	30163-30169
10 Grana	30170-30184
20 Grana	30185-30197
50 Grana	30198-30202
Cancellations (ordered by towns alphabetically)	30203-30246
Maritime Mail	30247-30252

1859 Sicily Issue – Shades

The 1859 Sicily issue of postage stamps, produced in the final year of the Bourbon administration, is distinguished not only by its historical significance but by the remarkable complexity of its printing. The wide range of shades encountered reflects variations in ink mixtures, inking intensity and production conditions over the life of the issue.

These pages bring together, in systematic sequence, the full spectrum of shades as recognised by long-established Italian specialists listed in the Sassone catalogue, allowing direct comparison between closely related shades. Beyond their aesthetic interest, these shades are fundamental to the correct classification, interpretation and valuation of the issue.

½ Grana



1 Grana



2 Grana



5 Grana



10 Grana



20 Grana



50 Grana



The Tomasini Collection of Classic Sicily

Essays and Proofs



30000 E

12'000 - 15'000

1858 Barone eleven essays on coloured papers of yellow, blue, lilac and rose, two colourless impressions on white paper and fifteen in various shades on white paper, almost all appear to have full original gum, **an extremely rare assembly in this superlative quality (28), a unique assembly** all neatly mounted and written up on album page (Sassone €84'000+).



30001

E

15'000 - 20'000

1858 Tommaso Aloisio Juvara complete set of seven unused imperf colour essays from ½ Gr. to 50 Gr. on large archival document fragment, plus 20Gr 'used', also additional 50Gr bright vermilion used single, an extremely rare assembly in superlative quality (9), a unique assembly.



30002 E

25'000 - 30'000

1858 E. Lesaché of Parigi proofs with **GR.** grey-blue on very thin paper with gum, a remarkable presentation piece with proof tied by framed cancel with proof of cancel alongside, plus medium paper blue and brown gummed proofs, an extremely rare assembly in superlative quality (4), a unique assembly.

Expertise: Signed E.Diena and A.Diena



30003

E

10'000 - 15'000

1859 E. Lesaché of Parigi proofs 2 Gr. violet and 10 Gr. blue unused, plus two black **GR.** working unused proofs, two C Pampillonia black artists' essays without values, an extremely rare assembly in superlative quality (6), a unique assembly.

Expertise: Signed E.Diena and A.Diena

½ Grana, Plate I

Stamps

PARTIAL UNUSED RECONSTRUCTION OF THE ½ GRANA PLATE ONE



30004 (*) / 1

5'000 - 7'000

1859 ½ Gr. plate I (reconstruction) unused, with 7 positions missing, and 7 positions in duplicate examples; 100 unused mint stamps in total, mostly with full or large part original gum. Stamps showing some of the retouches that are catalogued in Sassone for this plate. Generally full-margined examples, with a few cut close in places. Mostly very attractive stamps with good, fresh colours generally and most with dealers' or experts' signatures or handstamps, e.g. "ED" and "AD" of Emilio and Alberto Diena. A very impressive plating consisting of scarce stamps in uniformly very fine condition (100).



30005

© / 1a

100 - 150

1859 1/2 Gr. plate I, porous paper (NA) orange (*arancio*), fine four-margined single used, very fine and scarce in this quality.

Expertise: Signed "AD" of Alberto Diena



30006

© 田 / 1aa

3'000 - 4'000

1859 1/2 Gr. plate I, porous paper (NA), light yellow-orange (*giallo arancio chiaro*) in a right-hand sheet marginal **block of six**, margins touched at top and more so at base, but not in anyway detracting from this very rare and desirable used multiple.

This block was originally part of the most important cover of the Half Grana value (see Aquila, page 226). An extraordinary multiple of the utmost rarity.

Expertise: Signed A.Diena, Cert. Giacomo Bottacchi, AIEP (2026).

Expert's Statement:

The vast majority of Mario Tomasini's Sicily collection in the present catalogue has been carefully examined by Mr Giacomo Bottacchi, AIEP and signed by him in pencil with a special signature exclusive to this collection.

After thorough inspection, he has concluded that the descriptions, attributions and technical details provided are, to the best of his knowledge and belief, correct and prepared in accordance with accepted professional standards.





30007 * / 1b

12'000 - 16'000

1859 ½ Gr. plate I, porous paper (NA) olive yellow (*giallo oliva*) in very fine large margined single from the bottom of the sheet, showing original brownish gum, fresh and very fine.

Extremely important unused shade and unpriced in Sassone.

Expertise: Signed E. Diena and A. Diena, Cert. Emilio Diena in French (1925), Cert. Alberto Diena (1960), Cert. Giacomo Bottacchi, AIEP. (2026).



30008 © / 1b

7'000 - 10'000

1859 ½ Gr. plate I, porous paper (NA) olive yellow (*giallo oliva*), horizontal pair, positions 55-56, with good to touched margins at bottom right, nevertheless fine used.

Apparently, the unique used pair.

Expertise: Signed A.Diena, E.Diena, Cert. Alberto Diena (1957), Cert. Giacomo Bottacchi, AIEP. (2026).



30009 * / 1d

1'800 - 2'400

1859 ½ Gr. plate I, light yellow (*giallo chiaro*), showing good to large margins with original brownish gum, fresh, ironed out corner crease, still very fine and rare mint single.

Expertise: Signed A.Diena, E.Diena, Cert. A.Diena (1967).



30010



30012

30010 © / 1d

400 - 600

1859 ½ Gr. plate I, light yellow (*giallo chiaro*) in horizontal pair, four good to large margins, fine fresh used with parts of two, slightly misplaced frame cancels, extremely fine.

Expertise: Signed Asinelli (handstamp), A.Diena, E.Diena, Cert. A Diena (1960).



30011 * / 1e

2'000 - 2'600

1859 ½ Gr. plate I, porous paper (NA), deep orange (*arancio scuro*), **horizontal pair**, position 93-94, four large even margins, a fine example showing fresh original brownish gum.

A superb mint pair of the highest quality.

Expertise: Cert. Giacomo Bottacchi, AIEP. (2026).

30012 © / 1e

800 - 1'200

1859 ½ Gr. plate I, porous paper, deep orange (*arancio scuro*), used **horizontal pair** showing four large margins all round, an extremely fine and rare used multiple.

Expertise: Signed A.Diena, Cert. Alberto Diena (1967).



30013 *** 田 / 1e

4'000 - 6'000

1859 ½ Gr. plate I, white paper (PA) orange (*arancio*), left-hand unused sheet marginal block of twenty-five (5 x 5), showing very large to close margins all round, some natural ink flaws by centre, a couple of slight gum tones, remaining highly attractive.

An outstanding mint multiple, one of the largest recorded and an important exhibition showpiece.

Expertise: Signed "AD" pencil initials of Alberto Diena and Enzo Diena, Cert. Giacomo Bottacchi, AIEP. (2026).



30014 © / 1f

4'000 - 5'000

1859 ½ Gr. plate I, deep reddish orange (*arancio carico (rossastro)*) very large, even-margined, used single, a superb example of this very rare stamp.

One of the finest known examples.

Expertise: Signed A.Diena, "ED" Enzo Diena, Cert. A.Diena (1960), Cert. Giacomo Bottacchi, AIEP. (2026).

Covers



30015 ☒ / 1

20'000 - 30'000

1859 ½ Gr. plate I, orange (*arancio*), twelve examples composing of two pairs on obverse plus single 10 Gr., and on reverse a further pair and strip of six, the stamps on reverse are from positions 11-12 and 13-18, one of the pairs on front 19-20 and as such **very rare to have a complete row on any cover**, the pair at bottom slight paper fault, other reinforcements to entire itself, all on 1859 (21 Mag) large part entire from Messina to Vittoria, paying the 1-ounce domestic registered rate.

A unique franking and a major rarity.

Expertise: Signed A. Diena and Russo, Cert. Giacomo Bottacchi, AIEP. (2026).



30016  / 1

4'000 - 5'000

1859 ½ Gr. plate I, pair, bright orange (*arancio vivo*) position 31-32 (retouch on 31), and four singles from plate II 1 Gr. grayish olive green (*verde oliva grigiastro*), positions 16, 17, 65 and 70, mostly good to fine margins, on 1859 (28 Aug) outer letter sheet Messina to Napoli, the name of the addressee re-inserted on piece of paper, a fine and unlisted 5 Grana franking in Sassone, paying the domestic letter rate for two and a half sheets. **An important rarity.**

Expertise: Signed A.Diena, Cert. Giacomo Bottacchi, AIEP. (2026).



30017  / 1aa, 9b

3'000 - 4'000

1859 ½ Gr. plate I, light yellow-orange (*giallo arancio chiaro*) pair and single 5Gr. plate I, dark carmine (*carminio scuro*), all on 1859 outer letter sheet from Palermo to Girgenti, first stamp with small tear at top, fine and fresh, a wonderful and attractive usage of the 6 Grana franking paying the uncommon ¾ ounce domestic rate.

Expertise: Signed Russo, Cert. Giacomo Bottacchi, AIEP (2026).



30018

✉ / 1c

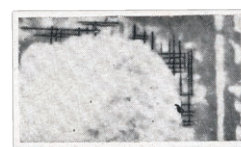
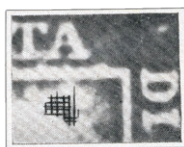
7'000 - 10'000

1859 ½ Gr. plate I, four well-margined singles, the second being the rare yellowish brown (*giallo brunastro*) and a single 2Gr., on 1859 (17 Ott) Assicurata entire to Cefalu, the name of the addressee enhanced. An outstanding usage showing four Half Grana stamps in three different shades from four different sheets.

A striking cover, this 4 Grana franking is unpriced in Sassone, the ½ Gr. shade is listed at €160,000.

Expertise: Signed A.Diena, Cert. Giacomo Bottacchi, AIEP (2026).

Retouches (ordered by plate position)



30019



30020



30021

30019 ☉ / 1a **180 - 240**

1859 ½ Gr. plate I, porous paper (NA) orange (*arancio*), **position 19** retouch (above head at top right), four good even margins fresh used with cancel clear of retouch which remains clearly visible, showpiece.

Expertise: Signed E.Diena

30020 * / 1a **150 - 200**

1859 ½ Gr. plate I, orange (*arancio*), white paper left-hand mint marginal with original gum, showing **position 31** retouch (line above 'A' of 'Della'), fine good to large margins example.

Expertise: Signed 'ED' and 'AD' of Emilio and Alberto Diena.

30021 * / 1a **80 - 120**

1859 ½ Gr. plate I, porous paper (NA), orange (*arancio*), **position 69** retouch, four close to large margins, original brownish gum, fine and scarce.

Expertise: Signed "AD" and "ED" of Alberto and Emilio Diena

Bidding Steps

50-100	→ 5	500-1000	→ 50	10'000-20'000	→ 1'000
100-200	→ 10	1'000-2'000	→ 100	20'000-50'000	→ 2'000
200-500	→ 20	2'000-5'000	→ 200	50'000-100'000	→ 5'000
		5'000-10'000	→ 500	100'000-200'000	→ 10'000

Bids between these steps will be adjusted accordingly to the next higher bid step.



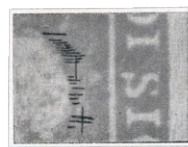
30022

✉ / 1a

1'800 - 2'200

1859 1/2 Gr. plate I, four singles from positions 74, 11, 69 and an 80 right-hand marginal single, with **position 69** showing retouch above and to the right of the head, on 1859 (2.22) entire from Girgrnti to Palermo, fine and attractive, a rare usage of the retouch on cover.

Expertise: Signed "AD" Alberto Diena, Cert. Giacomo Bottacchi, AIEP. (2026).



30023



30024

30023

* / 1

150 - 200

1859 1/2 Gr plate I, stout paper (PA) orange (*arancio*), mint with four good to large margins, **position 79** retouch, fresh with original gum, fine and scarce.

Expertise: Signed "AD" and "ED" of Alberto and Emilio Diena.

30024

* / 1a

100 - 150

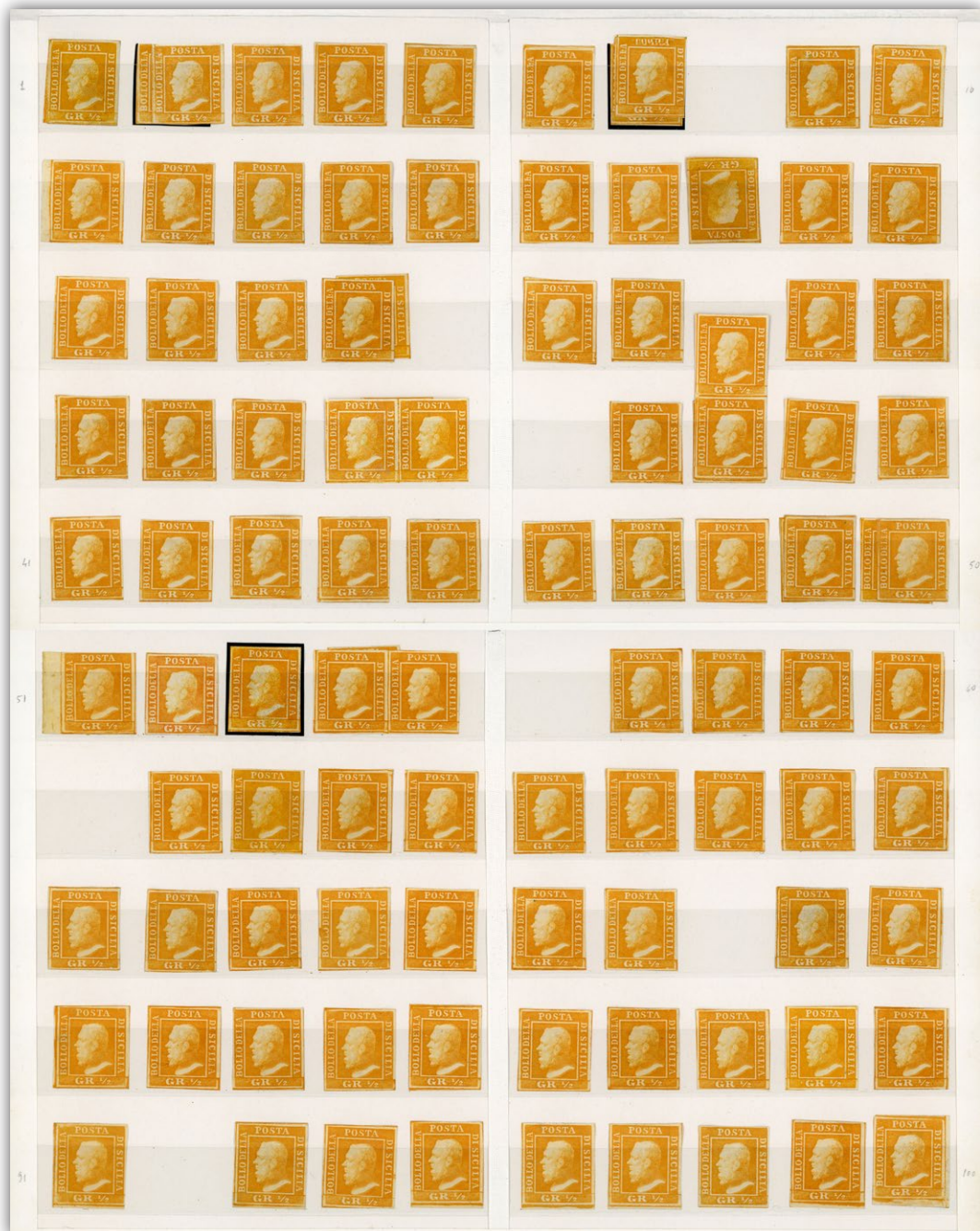
1859 1/2 Gr. plate I, stout white paper (PA) orange (*arancio*), **position 99** retouch, four good to large margins, fresh mint with original gum, fine and scarce.

Expertise: Signed "AD" and "ED" of Alberto and Emilio Diena.

½ Grana, Plate II

Stamps

PARTIAL UNUSED RECONSTRUCTION OF THE ½ GRANA PLATE TWO



30025 * (*) / 2

4'000 - 6'000

1859 ½ Gr. plate II unused, (reconstruction), with 8 positions missing, and 9 positions showing duplicate examples; 102 unused mint stamps in total, mostly with full original hinged gum, but also some unused without gum. Positions 34-35, 28-38, 45-55 are in very attractive pairs. Generally full-margined examples, with a few cut close in places. Mostly very attractive stamps with good, fresh colours generally and most with dealers' or experts' signatures or handstamps, e.g. Alberto Diena or Asinelli. A very impressive plating consisting of scarce stamps in uniformly very fine condition (102).



30026



30028



30029

30026

** * 田 / 2

700 - 1'000

1859 ½ Gr. plate II, white paper (PA), orange (*arancio*) in vertical **mint block of six**, position 11-12, 21-22 and 31-32, good to large margins all round, very fresh lightly hinged at top and base, central pair mint never hinged, an attractive showpiece. **Expertise:** Signed "AD" Alberto Diena, Cert. G. Oliva (1950)



30027

◎ / 2a

1'000 - 1'500

1859 ½ Gr. plate II, porous paper, orange (*arancio*) bottom sheet marginal **strip of four**, margins touched at top and at right, right stamps with central tear, neatly cancelled and still a very fine and a very attractive used multiple. **Expertise:** Signed E.Diena, A.Diena, Cert. Giacomo Bottacchi, AIEP (2026).

30028

* / 2b

80 - 100

1859 ½ Gr. plate II, white paper (PA) bright orange (*arancio vivo*), mint with original gum showing four good to large margins, fresh and very fine. **Expertise:** Signed "AD" and "ED" of Alberto and Emilio Diena.

30029

◎ / 2c

300 - 400

1859 ½ Gr. plate II, porous paper, dark orange (*arancio scuro*), close to good margins, used with an **inverted cancel**, unusual and scarce. **Expertise:** Signed "AD" and "ED" of Alberto and Emilio Diena, Cert. Giacomo Bottacchi, AIEP (2026).

Covers

30030  / 2b, 5

4'000 - 6'000

1859 ½ Gr. plate II, bright orange (*arancio vivo*) in a pair and a 1Gr. plate III single, close to good margins, despatch cancel 5/5 with inverted 5 (month) overstruck by arrival cancel of 7/5.

Only five letters with this combination recorded in Sassone.

Expertise: Signed Russo, Cert. Giacomo Bottacchi, AIEP. (2026).

The
TOMASINI COLLECTIONS

of Classic
Great Britain
& Sicily



Be sure to participate in the auction of
CLASSIC GB (PART I)

March 26, 14:00 CET

1 Grana, Plate I

Stamps

PARTIAL USED RECONSTRUCTION OF THE 1 GRANA PLATE ONE



30031

© / 3

3'000 - 4'000

1859 1 Gr. plate I used (reconstruction), with 12 positions missing, and 22 positions in duplicate or triplicate examples; pos. 11-12 in pair and pos. 78-80 in an attractive strip of three. 112 used stamps in total. Stamps showing many of the retouches that are catalogued in Sassone for this plate, such as the notable pos. 27 and 34. Generally full-margined examples, with a few cut close in places. Mostly attractive used stamps with good, fresh colours generally and most with dealers' or experts' signatures or handstamps, e.g. Diena or Asinelli. A very impressive attempt at reconstructing this difficult plate with stamps in mostly very good condition (112).



30032 * / 3

7'000 - 10'000

1859 1 Gr. plate I, rust brown (*bruno ruggine*), mint pair, positions 24-25, good to large even margins, usual brownish gum, very fine and an extremely rare mint multiple.

Exhibition showpiece.

Expertise: Signed E.Diena, Cert. Giacomo Bottacchi, AIEP (2026).



30033 ☉ / 3

180 - 240

1859 1 Gr. plate I, state I, brown rust (*bruno ruggine*), showing four large even margins, a very fine used example.

Expertise: Handstamped Asinelli, pencil signature "AD" Alberto Diena.



30034 * / 3c

15'000 - 20'000

1859 1 Gr. plate I, state II, grayish olive green (*verde oliva grigastro*), mint showing four good to large margins, usual original brownish gum., very fine and extremely rare, unpriced in Sassone.

The unique example with original gum.

An important rarity of the Italian States and an exhibition showpiece.

Expertise: Signed A.Diena, Cert. Giacomo Bottacchi, AIEP (2026).

PARTIAL USED RECONSTRUCTION OF THE 1 GRANA PLATE ONE, STATE II



30035

(*) © / 3d

2'000 - 3'000

1859 1 Gr. plate I, state II, used (reconstruction), with 59 positions of used stamps, some positions in duplicate examples and, pos. 39-40, 49-50, 73-74, and 91-92 in very attractive pairs. 67 stamps in total. Pos. 61-62, 78-79 and 83-84 in attractive used pairs. Stamps showing some of the retouches that are catalogued in Sassone for this plate. Generally full-margined examples and some with margin, with a few cut close in places. Mostly attractive used stamps with good, fresh colours generally and most with dealers' or experts' signatures or handstamps, e.g. Diena. A heroic attempt at reconstructing this very difficult plate of rare stamps (67).



30036 * / 3d

7'000 - 10'000

1859 1 Gr. plate I, state II, brown-olive (*bruno olivastro*), horizontal pair, large even margins, original brownish gum, slight gum crease. **A very rare and important mint multiple. Showpiece.**

Expertise: Signed E.Diena, Cert. Giacomo Bottacchi, AIEP (2026).



30037 © / 3d

600 - 800

1859 1 Gr. plate I, state II, brown olive (*bruno olivastro*), horizontal pair showing four good to large even margins, positions 76-77, very fine used. **Expertise:** Signed E.Diena, Cert. Giacomo Bottacchi, AIEP (2026).

Covers



30038 ☒ / 3, 6

1'500 - 2'000

1859 1 Gr. plate I, rust brown (*bruno ruggine*) and 2Gr., the latter with one touched margin, the 1Gr. a right-hand marginal with large margins, all on 1860 (9 Mar) underfranked outer letter sheet to Palermo, oval-framed **LEONFORTE** handstamp at right plus two Palermo arrival cds, bottom left with an extremely fine strike of rare straight-line **Insufficiente** handstamp. **Expertise:** Signed Russo, E.Diena, A.Diena, Cert. Giacomo Bottacchi, AIEP (2026).



30039

✉ / 3a

1'500 - 2'000

1859 (22.6) Outer letter sheet from Trapani to Palermo franked 1 Gr. plate I, state I, dark rust brown (*bruno ruggine intenso*), four good even margins and a 2 Gr. plate III, red despatch date stamp at right, Palermo arrival cds to left.

A fine example of the 3 Grana franking paying the 1 ½ sheet domestic rate.

Expertise: Signed Russo, E.Diena, "AD" Alverto Diena, Cert. Giacomo Bottacchi, AIEP (2026).



30040

✉ / 3d

4'000 - 6'000

1859 1 Gr. plate I, state II, dark olive brown (*bruno olivastro scuro*) in horizontal pair with very large margins all round, on 1860 (6 Feb) entire from Modica to Palermo.

This entire is most likely the finest extant example with this dark olive brown shade.

Expertise: Signed Russo, A.Diena, Cert. Giacomo Bottacchi, AIEP (2026).

ONE OF THE MOST IMPORTANT ONE GRANA COVERS



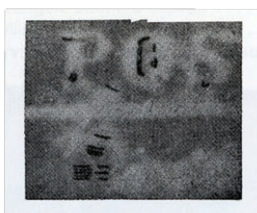
30041 ✉ / 3d

18'000 - 24'000

1859 1 Gr. plate I, state II, olive brown (*bruno olivastro*), six single examples including **position 89** with retouch, all with four good margins, individually cancelled on entire from Mesaina to Girgenti; fine and most unusual.

The second most important item of the One Grana plate I, state II.

Expertise: Signed Russo, Cert. Giacomo Bottacchi, AIEP (2026).





30042 ☒ / 3d, 5a

1'500 - 2'000

1859 1 Gr. plate I, state II, olive brown (*bruno olivastro*) and plate III 1 Gr. olive green (*verde oliva*) each with four good margins, tied on 1850 cover, a little heavily cancelled, Palermo despatch to left, a fine and rare 2 grana franking.

Expertise: Signed Russo, Cert. Giacomo Bottacchi, AIEP (2026).

Retouches (ordered by plate position)



30043



30044

30043 ☉ / 3

180 - 240

1859 1 Gr. plate I, showing retouch below 'O' of 'Posta' from **position 7**, used with good to large even margins, very fine and scarce.

Expertise: Signed E.Diena

30044 ☉ / 3

180 - 240

1859 1 Gr. plate I, rust brown (*bruno ruggine*), showing retouch at top left of head from **position 14**, used, good to large margins, very fine

THE FERRARY RETOUCH



30045 * / 3

18'000 - 24'000

1859 1 Gr. plate I, rust brown (*bruno ruggine*), retouch **position 16** showing extensive facial repair, mint with original brownish gum, currently unpriced unused in Sassone.

An important Italian States rarity. Showpiece.

Expertise: Cert. Alberto Diena (1950), Cert. Giacomo Bottacchi, AIEP. (2026).

Provenance: Ex Ferrary, Arthur Hind.





30046 ☒ / 3

2'000 - 2'800

1859 1 Gr. plate I, rust brown (*bruno ruggine*), two large margined singles, positions 18 and 19, on 1859 (23 Mar) cover to Palermo, the former with large retouch under chin, oval framed **GIRENTI** despatch and arrival cds, fine and very rare

Expertise: Signed A.Diena, Cert. Giacomo Bottacchi, AIEP (2026).



30047 ☒ / 3d

30'000 - 40'000

1859 1 Gr. plate I, state II, right-hand horizontal sheet marginal **strip of three** on cover, showing positions 18-20, with **position 18** retouched in its second state, with much work on the background and face.

An outstanding showpiece. Probably the most important retouch cover.

Expertise: Signed E.Diena, Cert. Giacomo Bottacchi, AIEP (2026).



30048



30050



30051

30048

⊙ / 3

200 - 280

1859 1 Gr. plate I, rust brown (*bruno ruggine*), **position 24** retouched by lips, four margined used example, very fine and scarce. **Expertise:** Signed "AD" Alberto Diena



30049

(✉) / 3d, 9, 13c

1'500 - 2'000

1859 Large part folded letter sheet to Messina, endorsed "Col Vapore "Archimede" and franked 1 Gr. plate I, olive brown (*bruno olivastro*), 5Gr. rose carmine (*rosa carminio*)(light crease) and 20Gr. dark slate (*ardesia scuro*), the 1 Gr. from **position 27** with retouch; attractive and rare 26 Grana rate with the retouch.

Expertise: Signed Russo, A.Diena, Cert. Giacomo Bottacchi, AIEP (2026).

30050

⊙ / 3d

300 - 400

1859 1 Gr. plate I, 2nd state, olive-brown (*bruno olivastro*), **position 34** retouch 'ciuffo refatto', used with four margins, fine and scarce. **Expertise:** Signed 'ED' Emilio Diena.

30051

⊙ / 3

1'200 - 1'600

1859 1 Gr. plate I, state II, grayish olive green (*verde oliva grigastro*), **position 51** retouch (nose), used with four good to large margins, very fine and scarce in this shade.

Expertise: Signed E.Diena



30052



30053



30054

30052 ☉ / 3a **180 - 240**

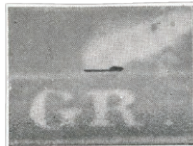
1859 1 Gr. plate I, intense rusty brown (*bruno ruggine intenso*), **position 53** retouch on the nose, used with four good to large margins, very fine and scarce. **Expertise:** Signed "AD" Alberto Diena, Cert. Giacomo Bottacchi, AIEP. (2026).

30053 ☉ / 3d **200 - 280**

1859 1Gr. plate I, state II, olive brown (*bruno olivastro*), **position 55** retouch under the chin, four even margins used with horizontal crease at top, fine and scarce. **Expertise:** Signed "ED" Enzo Diena, Cert. Giacomo Bottacchi, AIEP. (2026).

30054 ☉ / 3d **600 - 800**

1859 1 Gr. plate I, state II, olive brown (*bruno olivastro*), retouch **position 57** within horizontal pair, good to large margins, fine and a rare retouch in a multiple.



30055



30056

30055 ☉ / 3 **300 - 400**

1859 1 Gr. plate I, state I, rust brown (*bruno ruggine*), **position 59** retouch showing line under bust, used with four large even margins, very fine and scarce.

30056 ☉ / 3 (78) **360 - 500**

1859 1 Gr. plate I, state I, rust brown (*bruno ruggine*), **position 78** showing retouch on the nose, four margins used single, very fine and scarce. **Expertise:** Signed A.Diena, E.Diena



30057 © / 3

600 - 800

1851 1 Gr. plate I, state I, rust brown (*bruno ruggine*), position 87 retouch used within a pair, four good to large margins, single central cancel, fine and rare.

Expertise: Signed E.Diena

1 Grana, Plate II

Stamps

THE LARGEST RECORDED MULTIPLE OF PLATE TWO



30058 *** 田 / 4

15'000 - 20'000

1851 1 Gr. plate II, white paper (PA), greyish olive green (*verde oliva grigastro*), mint with original gum, left-hand marginal block of 32 (8 x 4), folded horizontally between stamps and vertically between each pair, some other sometimes heavy creasing, hinge reinforcements, fresh appearance. An impressive unused multiple and an exhibition showpiece.

Expertise: A.Diena, Cert. Giacomo Bottacchi, AIEP (2026).

You can view our catalogues and bid during the auction
via our website at www.davidfeldman.com



30059



30060



30061

30059

☉ / 4a

60 - 80

1859 1 Gr. plate II, dark olive brown (*bruno oliva scuro*), position 77, used with four even margins, fresh and very fine. **Expertise:** "ED" Emilio Diena, "AD" Alberto Diena.

30060

* / 4b

500 - 600

1859 1 Gr. plate II, porous paper (NA) olive brown (*bruno oliva*), mint showing usual original brownish gum, four good to large margins, very fine and scarce. **Expertise:** Signed "AD" Alberto Diena.

30061

☉ / 4b

80 - 120

1859 1 Gr. plate II, olive brown (*bruno oliva*), used horizontal pair with good to large margins, fresh, very fine and scarce. **Expertise:** "AD" Alberto Diena

**30062**

* / 4c

1'500 - 2'000

1859 1 Gr. plate II, porous paper (NA), light olive brown (*bruno oliva chiaro*), mint with usual brownish original gum, left sheet marginal vertical strip of three, good to large margins on all other sides, light creases on two, fresh and with a wonderful appearance. **A very rare mint multiple. Showpiece. Expertise:** Cert. Giacomo Bottacchi, AIEP (2026).



30063



30066

30063

⊙ / 4c

60 - 80

1859 1 Gr. plate II, olive brown (*bruno oliva*), used horizontal pair, good margins, fresh and very fine.



30064

△ / 4f

150 - 200

1859 1 Gr. plate II, olive (*oliva*), position 35 showing clear **double impression (doppie incisioni)**, used with four margins, in combination on fragment with 10 Gr., very fine and scarce usage of the variety.

Expertise: Signed Russo, A.Diena.



30065

* / 4g

200 - 280

1859 1 Gr. plate II, porous paper (NA) greyish olive green (*verde oliva grigiastro*), mint with usual brownish original gum, **position 32** showing **double engraving**, very fine and scarce.

Expertise: Handstamped Asinelli, Signed "AD" Alberto Diena

30066

⊙ / 4g

80 - 120

1859 1 Gr. plate II, greyish olive green (*verde oliva grigiastro*), used, position 32 showing **double engraving**, four good even margins, very fine and scarce.

Expertise: Signed Russo, E.Diena, A.Diena.

Find a bid form on the **last page** of this catalogue.

THE UNIQUE PAIR WITH DOUBLE PRINT



30067

* / 4h

6'000 - 8'000

1859 1 Gr. plate II, porous paper (NA), olive brown (*bruno oliva*) in mint bottom sheet marginal vertical pair, both showing dramatic **double print**, with usual original brownish gum.

An outstanding showpiece.

Expertise: A.Diena, E.Diena, Cert. Giacomo Bottacchi, AIEP. (2026).



30068

© / 4h

1'000 - 1'500

1859 1 Gr. plate II, dark brown (*bruno oliva scuro*), used showing vertical **double print**, four even margins, very fine and rare.

Expertise: Signed A.Diena, Cert. A.Diena (1960), Cert. Giacomo Bottacchi, AIEP. (2026).

Covers



30069 ☒ / 4b

240 - 300

1859 (16.5) Cover from Leonforte to Palermo, franked **1 Gr. plate II**, horizontal right sheet marginal pair, good other margins, the brownish gum showing through on the margin, horizontal cover crease ironed out, showing oval **LEONFORTE** in black alongside, attractive and rare.

Expertise: Signed, Russo pencil signature and "AD" initials.



30070 ☒ / 4c

240 - 300

1859 1 Gr. plate II, dark olive brown (*bruno oliva scuro*), horizontal strip of three, positions 87-89, good to clear margins all around, on 1860 (4.2) cover Girgenti to Palermo, light corner crease on one, very fine and a scarce usage paying the 1 ½ sheet domestic letter rate.

Expertise: Signed "AD" Alberto Diena.



30071

✉ / 4f

200 - 280

1859 1 Gr. plate II, greyish olive (*oliva grigiastro*), position 35, tied by double strike together with 2Gr., both with four margins, on 1859 cover, Messina to Napoli, fresh and very fine paying the 1½ sheet domestic letter rate.

Expertise: Signed "AD" pencil initials of Alberto Diena.



30072

✉ / 4g

400 - 600

1859 (7.12) Folded letter sheet from Catania to Messina, franked 1 Gr. Plate II, pair (pos 33-34) and single position 32, showing **double engraving** variety, all with four good margins, fresh, very fine and rare in this condition, paying the 1½ sheet domestic letter rate.

Expertise: Signed "AD" Alberto Diena.

Retouches (ordered by plate position)



30073

* / 4b

400 - 600

1859 1 Gr. plate II, olive brown (*bruno oliva*), mint with original gum, showing **position 59** retouch above 'A' of 'Posta', four even margins, fresh, very fine and rare in mint condition.

Expertise: Cert. Giacomo Bottacchi, AIEP. (2026).



30074

✉ / 4c

240 - 300

1859 1 Gr. plate II, dark rusty brown (*bruno ruggine scuro*), **position 69** retouch, four good margins, manuscript "Insuficiente" at top and manuscript "1" at bottom centre, on 1859 thick entire underfranked, fine and unusual, rare usage of the retouch on cover.

Expertise: Signed Russo, Cert. Giacomo Bottacchi, AIEP. (2026).

30075

* / 4b

150 - 200

1859 1 Gr. plate II, olive brown (*bruno oliva*), mint with original gum, **position 82** showing retouch above head, under 'T' of 'Posta', with four good even margins, very fine and scarce.

Expertise: Signed "ED" Emilion Diena, "AD" Alberto Diena.

1 Grana, Plate III

Stamps

COMPLETE UNUSED RECONSTRUCTION OF THE 1 GRANA PLATE THREE

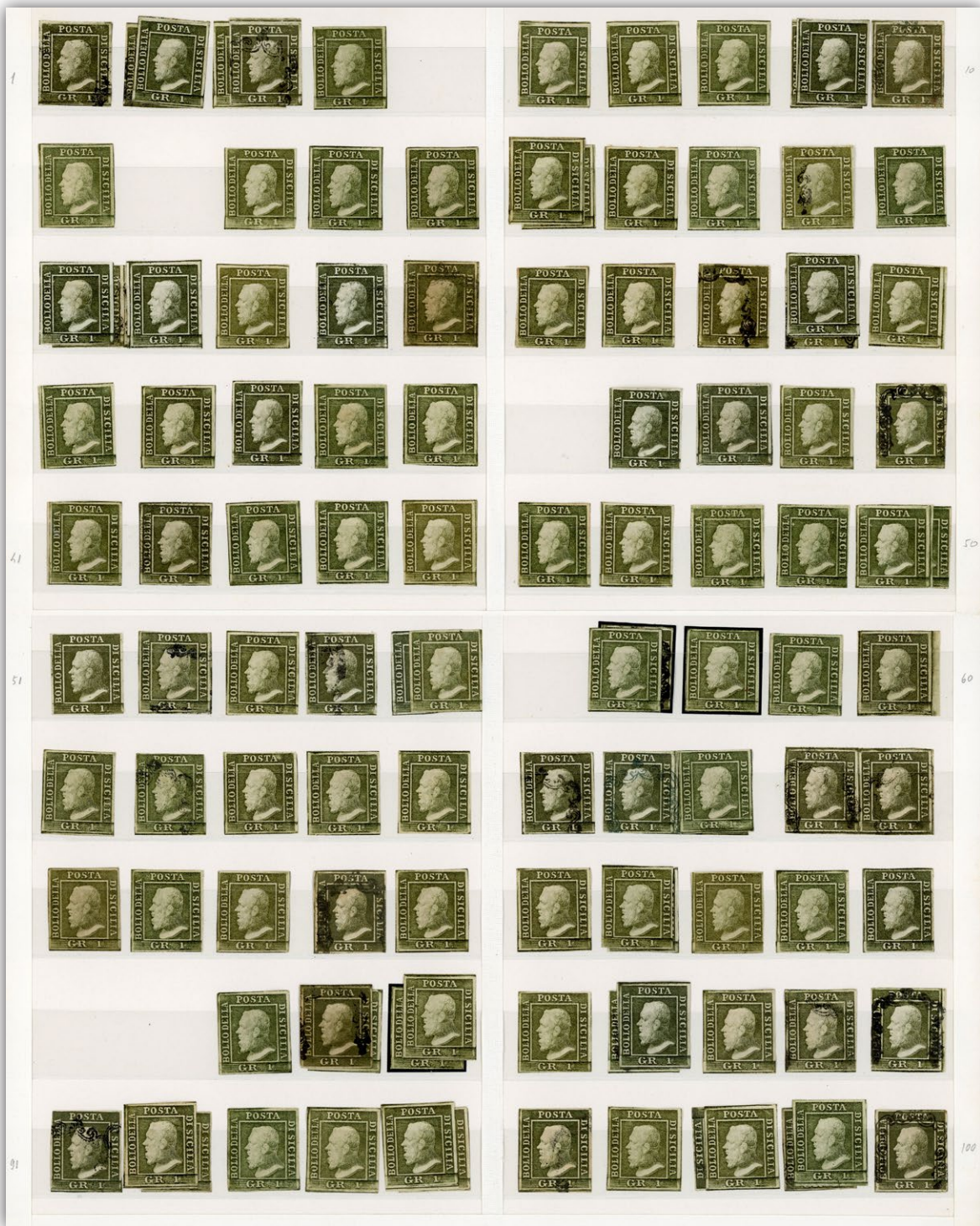


30076 * (*) / 5

2'000 - 3'000

1859 1 Gr. plate III (reconstruction), mint stamps with original gum, a few without gum, mostly full-margined examples with a few cut close in places. Stamps hinged to two exhibition pages and most with dealers' or experts' signatures or handstamps, mostly "ED" and "AD" Emilio and Alberto Diena. A most impressive complete plate reconstruction of one hundred singles with uniformly attractive stamps in superb condition (100).

PARTIAL UNUSED AND USED RECONSTRUCTION OF THE 1 GRANA PLATE THREE



30077 * (*) © / 5

1'500 - 2'000

1859 1 Gr. bright olive plate III, used and unused (reconstruction), with 6 positions missing and 17 positions present in duplicate copies. 111 stamps in total, mostly unused mint with full or large part original gum, and some used.. Pos. 21-22 and 67-68 in attractive used pairs. Generally full-margined examples, with a few cut close and some showing margin. Mostly attractive stamps with strong, fresh colours overall and most with dealers' or experts' signatures or handstamps, e.g. Diena (111).



30078

*** / 5

80 - 120

1859 1 Gr. plate III, PA paper, bright olive green (*verde oliva chiaro*), mint original gum, vertical pair hinged at top with slight stain on face, the bottom stamp with tear but is mint never hinged, fresh and very fine.

Expertise: Signed "AD" Alberto Diena.



30079

◎ 田 / 5

1'500 - 2'000

1859 1 Gr. plate III, bright olive green (*verde oliva chiaro*), reconstructed used **block of four**, former by two horizontal pairs, good to large margins, fine used, a rare multiple even if formed by two pairs, showpiece.

Expertise: Signed "AD" Alberto Diena, Certs. Alberto Diena (1964) and (1967).

Expert's Statement:

The vast majority of Mario Tomasini's Sicily collection in the present catalogue, has been carefully examined by Mr Giacomo Bottacchi, AIEP and signed by him in pencil with a special signature exclusive to this collection.

After thorough inspection, he has concluded that the descriptions, attributions and technical details provided are, to the best of his knowledge and belief, correct and prepared in accordance with accepted professional standards.



IMPORTANT BLOCK OF TWENTY-FIVE



30080 *** 田 / 5b

20'000 - 30'000

1859 1Gr. plate III, dark olive green (*verde oliva cupo*), mint right-hand corner sheet marginal block of twenty-five (5x5), bottom three stamps cut into at base, otherwise good to large margins showing usual original brownish gum.

A spectacular showpiece.

Expertise: Signed E.Diena, Cert. A Diena (1958), Cert. Giacomo Bottacchi, AIEP. (2026).



30081

© / 5b

300 - 400

1859 1 Gr. plate III, dark olive green (*verde oliva scuro*), used horizontal **strip of three**, positions 34-36, showing unusual inverted cancellations, good to large margins, very fine and a scarce used multiple.

Expertise: Signed "ED" Emilio Diena, "AD" Alberto Diena.



30082

* 田 / 5d

1'500 - 2'000

1859 1 Gr. plate III, olive green (*verde oliva*), mint **block of four**, position 45-46/55-56, close to good margins with original gum, light wrinkle on lower pair, fresh, very fine and a very rare mint block.

Expertise: Signed "ED", "AD" of Enzo and Alberto Diena, Cert. Giacomo Bottacchi, AIEP. (2026).

Bidding Steps

50-100	→	5	500-1000	→	50	10'000-20'000	→	1'000
100-200	→	10	1'000-2'000	→	100	20'000-50'000	→	2'000
200-500	→	20	2'000-5'000	→	200	50'000-100'000	→	5'000
			5'000-10'000	→	500	100'000-200'000	→	10'000

Bids between these steps will be adjusted accordingly to the next higher bid step.

All bids in Swiss francs (CHF)

Covers



30083 ☒ / 5,8

400 - 600

1859 (7.9) Folded letter sheet to Palermo franked horizontal pair **1Gr. plate III, dark olive green** (*verde oliva scuro*), showing oval **Barcelona/Pozzo di Gotto** handstamp in black plus arrival, both alongside, very fine and scarce.

Expertise: Signed "AD" Alberto Diena.



30084 ☒ / 5,8

300 - 400

1859 Folded letter sheet to Girgenti franked horizontal strip of three **1 Gr. plate III, olive green** (*verde oliva*) (PA), positions 55-57, showing framed **CASTELTERMINI** handstamp in dull red alongside, above this manuscript "Insufficiente" and manuscript one charge raised bottom left; fine and an attractive usage paying the two sheets domestic rate, insufficient and taxed "1" for the missing grana.

Expertise: Signed "AD" Alberto Diena, "ED" Emilio Diena.

2 Grana, Plate I

Stamps

PARTIAL USED RECONSTRUCTION OF THE 2 GRANA PLATE ONE



30085

© / 6

1'000 - 1'500

1859 2 Gr. plate I, used, (reconstruction), with positions 4 and 9 missing and 16 positions present in duplicate or triplicate copies. 118 used stamps in total. With all of the better retouches of this plate that are catalogued in Sassone. Pos. 77-78 in an attractive pair. Generally, full-margined examples, with a few cut close and some showing sheet margins. Mostly attractive stamps with strong, fresh colours overall and most with dealers' or experts' signatures or handstamps, mostly Diena. An impressive, nearly complete plate reconstruction with stamps in superb quality (118)



30086

⊙ / 6

150 - 200

1859 2 Gr. plate I, white paper (PA), blue (*azzurro*), position 91, used with close to good margins, showing **blurred print (stampe smosse)**, fine and scarce.

Expertise: Signed "ED" Emilio Diena, "AD" Alberto Diena



30087

* / 6a

600 - 800

1859 2 Gr. plate I, porous paper (NA) blue (*azzurro*), position 41, mint, good to large margins, usual original brownish gum, fresh, very fine and scarce.

Expertise: Signed "AD" Alberto Diena, Cert. Giacomo Bottacchi, AIEP. (2026).

THE LARGEST KNOWN MINT MULTIPLE OF THIS STAMP



30088

* / 6b

7'000 - 10'000

1859 2 Gr. plate I, cobalt (*cobalto*), in a mint **horizontal strip of eight**, positions 11-18, good to close margins all around, usual original brownish gum. **An outstanding showpiece.**

Expertise: Signed A. Diena, Cert. Giacomo Bottacchi, AIEP. (2026).



30089



30090

30089 ☉ / 6c **60 - 80**

1859 2 Gr. plate I, dark cobalt (*cobalto scuro*), position 14, used with four good margins, very fine.

Expertise: Signed "AD" Alberto Diena.

30090 ☉ / 6c **100 - 150**

1859 2 Gr. plate I, dark cobalt (*cobalto scuro*), position 1, used, four good to large margins, very fine and a scarce shade.

Expertise: Signed "AD" Alberto Diena, "ED" Enzo Diena.



30091 * / 6d **4'000 - 6'000**

1859 2 Gr. plate I, ultramarine (*azzurro oltremare*), position 69, four clear margins, fresh, original brownish gum, extremely rare.

Expertise: Asinelli handstamp and "AD" Alberto Diena pencil initials, Cert. Giacomo Bottacchi, AIEP. (2026).



30092 Δ / 6d **800 - 1'200**

1859 2 Gr. plate I, ultramarine (*azzurro oltremare*), pair used, position 47-48, close margins, used on a small fragment, fine and rare

Expertise: Signed "AD" Alberto Diena, Cert. Giacomo Bottacchi, AIEP. (2026).

The currency of the auction is the Swiss franc.

CHF

THE UNRECORDED BLOCK OF SEVENTEEN



30093 *** 田 / 6da

50'000 - 80'000

1859 2 Gr. plate I, porous paper (NA), light ultramarine blue (*azzurro oltremare chiaro*), mint bottom left corner sheet **marginal block of seventeen**, showing full original brownish gum, with **retouches** on positions 71, 81, 82, 84, 91, 92, 94, a wonderfully fresh block with vibrant colours.

An extremely rare and impressive multiple. Exhibition showpiece.

Expertise: Signed E.Diena, A.Diena and Giulio Bolaffi, Cert. Giacomo Bottacchi, AIEP. (2026).



30094

© / 6f

700 - 1'000

1859 2 Gr. plate I, bright blue (*azzurro vivo*), position 85, used with close to good margins, showing on the reverse **a dramatic offset**; there is an Assinelli handstamp on the front of the stamp, a striking showpiece item.

Expertise: Cert. Giacomo Bottacchi, AIEP. (2026).



30095

* (*) 田 / 6h

800 - 1'200

1859 2 Gr. plate I, porous paper (NA), bright blue (*azzurro chiaro*), **block of 9** (3 x 3), position 48-50/58-60/68-70, original gum, horizontal crease through the middle row and wrinkles on upper row, an attractive and rare mint multiple with a very high catalogue value.

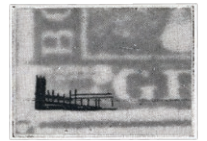
Expertise: Signed "AD" Alberto Diena, Cert. Giacomo Bottacchi, AIEP. (2026).

Please ensure your bids arrive on time!

In the case of equal bids, the first bid received will take precedence.



Covers



30096 ☒ / 6a

300 - 400

1859 (18.6) Folded letter sheet to Messina, franked two single of the 1859 2 Gr. plate I, porous paper (NA), blue (azzurro), right-hand stamp with **position 36** retouch, blue oval-framed **BRONTE** despatch handstamp at left, stamps a little rubbed and name added in address, attractive and scarce.

Expertise: Signed "AD" Alberto Diena.



30097 ☒ / 6b

150 - 200

1859 (30.1) Folded letter sheet to Catania, bearing single franking of the 1859 2 Gr. plate I, cobalt (cobalto), position 40, a right-hand sheet marginal with close but clear other margins, showing oval framed **MODICA** despatch in blue alongside, very fine and scarce.



30098

✉ / 6c

300 - 500

1859 (15.1) Folded letter sheet to Palermo, bearing single franking of the very rare shade **1859 2 Gr. plate I, dark cobalt (cobalto scuro)**, with oval framed **GIRENTI** despatch at right and arrival cds at centre, one close and three large margins, a wonderful item.

Expertise: Signed "AD" Alberto Diena.



30099

✉ / 6c

80 - 120

1859 Folded letter sheet to Catania, franked **1859 2 Gr. plate I, dark cobalt (cobalto scuro)**, tied frame cancel, to right fine strike of oval-framed **LEONFORTE** despatch handstamp, the name and address re-inked, fine and scarce.

Expertise: Signed "ED" Emilio Diena, "AD" Alberto Diena



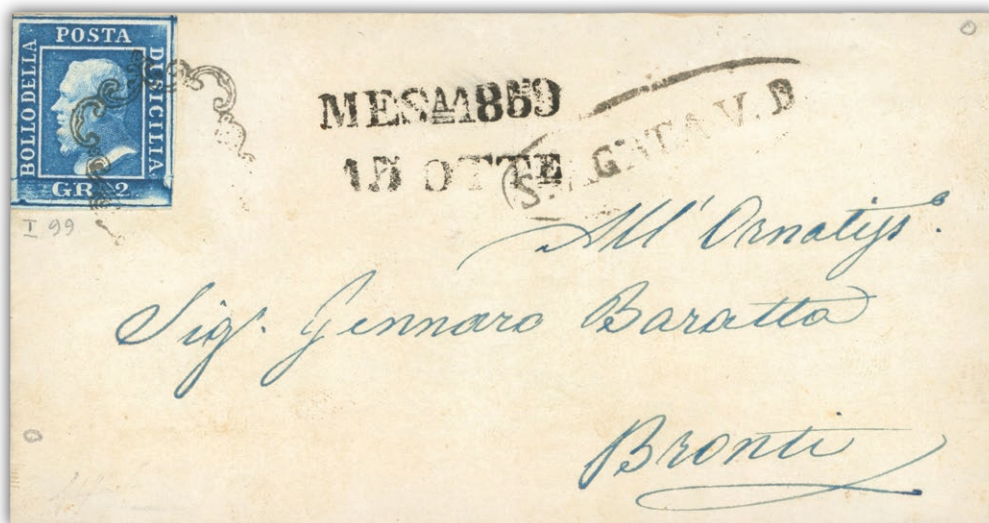
30100

✉ / 6d+7a

1'200 - 1'600

1859 (18.3) Registered folded letter sheet to Messina, franked with three 1859 2 Gr., from different plates, the middle example plate I position 99 in ultramarine, the left-hand stamp plate II position 75 and that on the right position 74, oval-framed **SIRACUSA** handstamped at right (Ocf - R1), arrival backstamp; some margins touched, not unduly detracting from a scarce mixed plate franking paying the 1 ½ sheet domestic registered letter rate and additionally important with the added rare postmark.

Expertise: Signed "AD" Alberto Diena, Cert. Giacomo Bottacchi, AIEP. (2026).



30101

✉ / 6f

80 - 100

1859 Cover front to Bronti, bearing single franking of the **1859 2 Gr. plate I**, bright blue (*azzurro vivo*), with oval-framed **S. AGATA V.D.** deparch and Messina transit alongside, fine and scarce.

You can view our catalogues and bid during the auction
via our website at www.davidfeldman.com



30102

✉ / 6g

2'000 - 3'000

1860 (17.1) Folded registered entire to Vittoria, franked **1859 2 Gr. plate I**, white Palermo paper light blue (azzurro chiaro), horizontal strip of four and a pair, positions 43-46 and 41-42, good to fine margins, the pair only cancelled by single frame handstamp, manuscript and oval-framed Assicurata top right with Palermo despatch below, exhibition showpiece paying the 3/4 ounce domestic registered letter rate.

Expertise: Signed "AD" Alberto Diena, Cert. Giacomo Bottacchi, AIEP. (2026).



30103

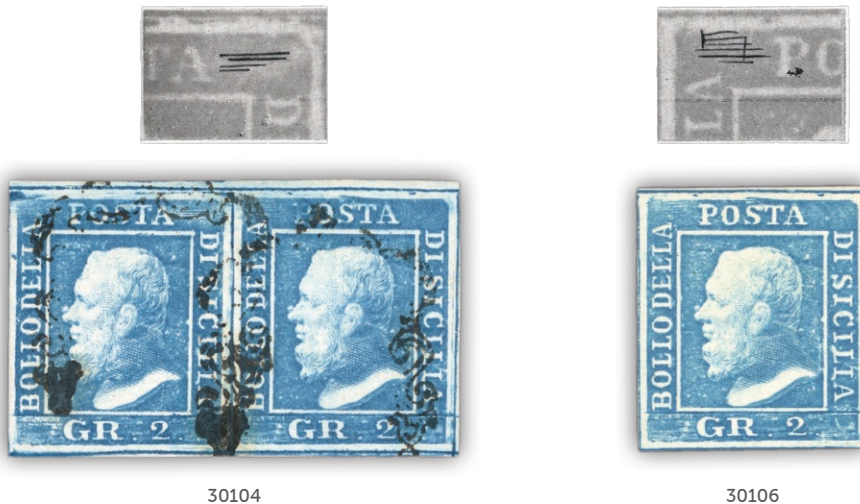
✉ / 7b

3'000 - 4'000

1859 2 Gr. plate I, cobalt (cobalto), two horizontal right marginal pairs, positions 99-100 and 89-90, on 1859 cover from Messina to Napoli, cancelled only by red framed 'Pacchetto a vapore Sicilia/ fuori valigia' and further small red maritime handstamp, showpiece. **Note:** See Aquila book, page 54, photo 46.

Expertise: Signed A.Diena, E.Diena, Colla, Cert. Alberto Diena (1957), G.Colla (2017), Giacomo Bottacchi, AIEP. (2026).

Retouches (ordered by plate position)



30104

30106

30104 ☉ / 6

80 - 120

1859 2 Gr. plate I, blue (*azzurro*), horizontal pair, position 7-8, the left-hand stamp shows retouch on **position 7**, good to large margins, very fine and scarce.

Expertise: "ED" Emilio Diena, "AD" Alberto Diena.



30105 ☉ / 6f

400 - 600

1859 2 Gr. plate I, bright blue (*azzurro vivo*), used top sheet marginal horizontal strip of four, positions 7-10, good to large margins, showing **position 7** retouch, very fine and a rare used multiple with the retouch.

Expertise: Signed "AD" Alberto Diena.

30106 * / 6

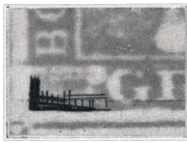
50 - 80

1859 2 Gr. plate I, white paper (PA) blue (*azzurro*), mint with original white gum, **position 8** retouch, scratch mark on surface at right, four good margins, fine and scarce.

Expertise: Signed "AD" Alberto Diena.

The currency of the auction is the Swiss franc.

CHF



30107



30108

30107

* / 6

60 - 80

1859 2 Gr. plate I, blue (azzurro), mint with original white gum, **position 36** retouch (recut bottom left corner), fresh and very fine.

Expertise: Signed "AD" Alberto Diena.

30108

© / 6h

70 - 100

1859 2 Gr. plate I, light blue (azzurro chiaro), used horizontal pair, position 36-37, good margins, the left-hand stamp **position 36** retouched, very fine and scarce.



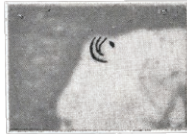
30109

✉ / 6

240 - 300

1859 (26.4) Folded letter sheet to Melazzo, bearing single franking left-hand sheet marginal 1859 2 Gr. plate I, showing **position 41** retouch with frame cancel at an angle, light blue **SCIACCA** despatch at right and Palermo transit at centre, very fine and scarce.

Expertise: Handstamped Fulpius



30110



30111



30113

30110

* / 6

40 - 60

1859 2 Gr. plate I, blue (*azzurro*), mint with original white gum, showing **position 51** retouch in hair, fresh, fine and scarce, showing uncommon partial offset on reverse.

30111

* / 6g

40 - 60

1859 2Gr plate I, blue (*azzurro*), mint with original white gum, four good margins, showing **position 55** retouch, very fine and scarce.



30112

✉ / 6g

150 - 200

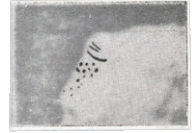
1859 2 Gr. plate I, bright blue (*azzurro chiaro*), four good margins, showing **position 55** retouch, single on 1859 (27.7) cover from Catania via Messina to Viotri, very fine and scarce

30113

△ ◎ / 6

80 - 120

1859 2 Gr. plate I, blue (*azzurro*), used horizontal pair on fragment with single cancel, position 71-72, retouch **position 71**, very fine and scarce.



30114

✉ / 6g

120 - 160

1859 2 Gr. plate I, bright blue (*azzurro chiaro*), four good margins, showing **position 78** retouch, single on 1859 cover from Messina to Girgenti, very fine and scarce.



30115

✉ / 6f

240 - 300

1859 2 Gr. plate I, used single, close to large margins, small cnr crease top left, showing **position 82** retouch, tied on 1859 (16 Apr) entire to Trapani, with red oval-framed **CASTELVETRANO** alongside, fine and scarce.

Expertise: Cert. Giacomo Bottacchi, AIEP. (2026).



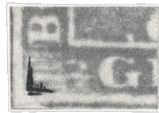
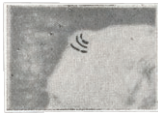
30116

✉ / 6b

700 - 1'000

1859 2 Gr. plate I, cobalt (*cobalto*), horizontal pair, **position 84-85**, the left-hand stamp showing **position 84** retouch, together with 10Gr., on 1859 (26 Feb) part entire to Genova, Palermo despatch cds, rating handstamp and red three-line Via/ Di Mare/ (E) handstamp, reverse with arrival cancels, the name and part of address re-written, fine and very scarce usage paying the 1 sheet letter rate to Genoa carried by commercial steamship.

Expertise: Signed Russo, Cert. Giacomo Bottacchi, AIEP. (2026).



30117

30118

30119

30120

30117

* / 6

40 - 60

1859 2 Gr. plate I, blue (*azzurro*), mint with original white gum, showing retouch **position 88**, very fine and scarce.

30118

* / 6

40 - 60

1859 2 Gr. plate I, blue (*azzurro*), mint with original white gum, showing **position 91** retouch, four good margins, fine and scarce.

Expertise: Signed "ED" Emilio Diena.

30119

© / 6b

70 - 100

1859 2 Gr. plate I, cobalt (*cobalto*), used bottom sheet marginal single, showing **position 91** retouch, small corner crease fine and scarce.

Expertise: Signed "ED" Emilio Diena, "AD" Alberto Diena.

30120

△ / 6b

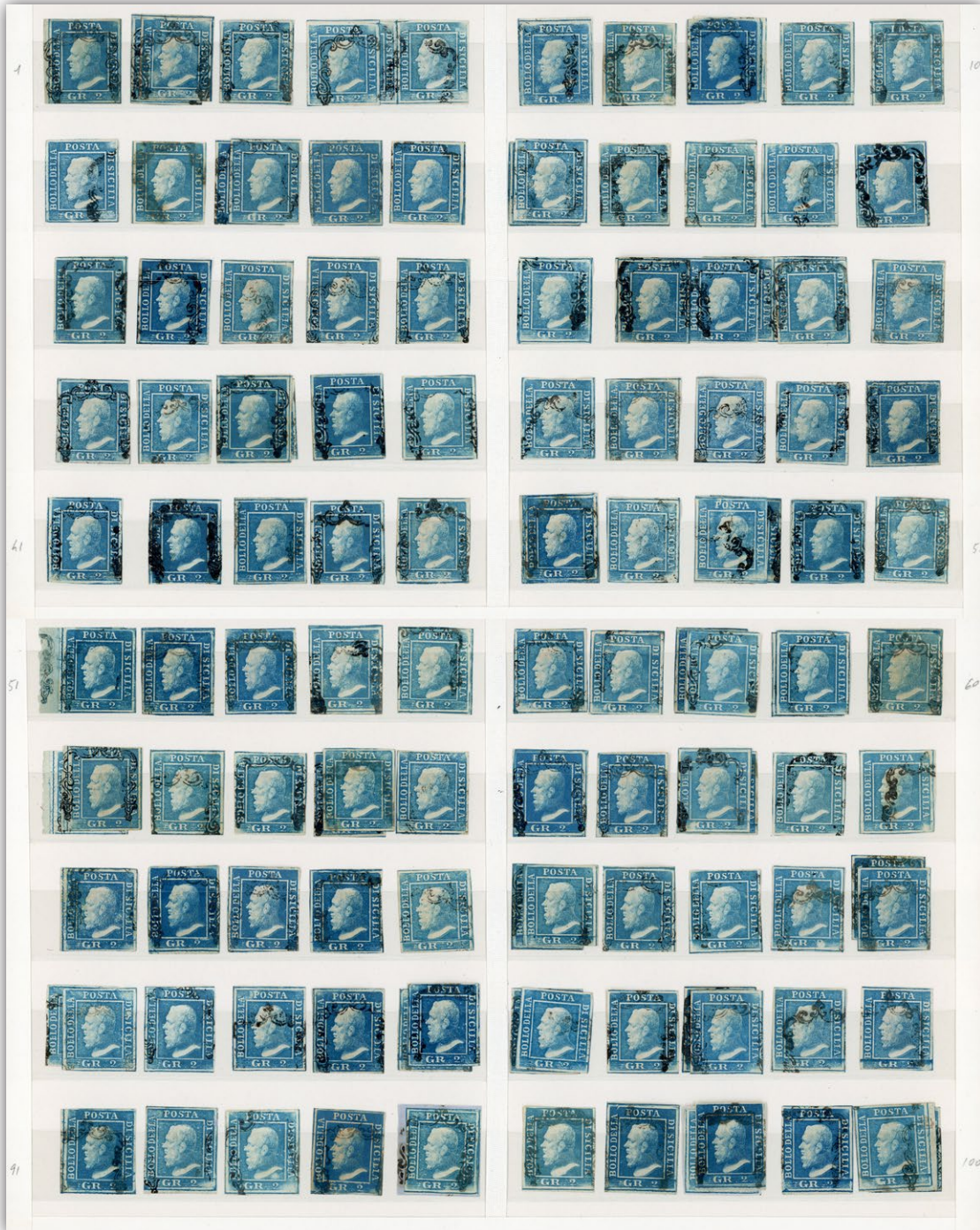
40 - 60

1859 2 Gr. plate I, cobalt (*cobalto*), used on fragment with framed cancel, showing **position 94** retouch, four good margins, fine and scarce.

2 Grana, Plate II

Stamps

COMPLETE USED RECONSTRUCTION OF THE 2 GRANA PLATE TWO



30121

© / 7

1'000 - 1'500

1859 2 Gr. blue plate II, used (reconstruction), with 23 positions present in duplicate copies. 123 used stamp in total. With all of the better retouches of this plate catalogued in Sassone, notably positions 45 and 83. Pos. 27-28 and 28-29 in attractive pairs. Generally full-margined examples, showing a few with sheet margins, some cut close. Mostly attractive stamps with fresh colours overall and most with dealers' or experts' signatures or handstamps, e.g. Diena. An impressive complete plate reconstruction in a very fine state of preservation (123).



30122



30124

30122

⊙ / 7b

80 - 120

1859 2 Gr. plate II, cobalt (*cobalto*), used in left-hand sheet marginal single, very fine.



30123



30126

30123

* / 7d

3'000 - 5'000

1859 2 Gr. plate II, porous paper (NA), ultramarine (*azzurro oltremare*) in mint **horizontal pair** with original brownish gum, light crease through both stamps, four close to large margins, very fine.

An extremely rare showpiece.

Expertise: Signed "AD" Alberto Diena, Cert. Giacomo Bottacchi, AIEP. (2026).

30124

⊙ / 7da

400 - 600

1859 2 Gr. plate II, bright ultramarine (*azzurro oltremare vivo*), position 35, used with good margins, very fine for this extremely rare shade. **Expertise:** Signed "ED" Emilio Diena, "AD" Alberto Diena.



30125

⊙ / 7da

2'400 - 3'000

1859 2 Gr. plate II, bright ultramarine (*azzurro oltremare vivo*), used **horizontal strip of three**, positions 8-10 with good margins, slightly discoloured top right corner, very fine for this extremely rare shade in this used multiple.

30126

⊙ 田 / 7da

2'000 - 3'000

1859 2 Gr. plate II, bright ultramarine (*azzurro oltremare vivo*), reconstructed **block of four** in two pairs, positions 1-2/11-12, the bottom left stamp cut into, a fine-looking item.

Exhibition showpiece.

Expertise: Signed "AD" Alberto Diena, Cert. Giacomo Bottacchi, AIEP. (2026).



30127

⊙ / 7e

180 - 240

1859 2 Gr. plate II, pale blue (*azzurro smorto*), used horizontal **strip of three**, positions 2-4, with four margins, very fine and a scarce used multiple.

Expertise: Signed "AD" Alberto Diena.

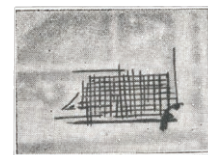
A UNIQUE SHOWPIECE



Front of the stamp



Back of the stamp



Retouch

30128

△ ⊙ / 7k

12'000 - 16'000

1859 2 Gr. plate II, ultramarine (*azzurro oltremare*), position 45 retouch, **printed both sides**, the reverse showing positions 35-36, 45-46, on a small fragment with blue frame cancel and oval-framed **SANTA CATERINA** handstamp also in blue.

Expertise: Cert. Giacomo Bottacchi, AIEP. (2026); Alberto Diena (1942), which shows a black printed mourning line due to passing of Emilio Diena.

Covers



30129 ☒ / 7g

1'500 - 2'000

1859 2 Gr. plate II, light blue (*azzurro chiaro*) (PA) in horizontal strip of four, positions 57-60, good four margined strip, showing **position 57 a retouch**, good four margined strip, on 1860 (5.5) cover from Messina to Catania, a very fine and a rare usage of the multiple showing the retouch error.

Expertise: Signed "AD" Alberto Diena, Cert. Giacomo Bottacchi, AIEP. (2026).



30130 ☒ / 7d

2'000 - 3'000

1859 2 Gr. plate II, ultramarine (*azzurro oltremare*) horizontal pair, good margins lightly cancelled, on 1859 cover to Napoli, Palermo despatch at right, removal of wax seal has caused light damage, still a very rare usage of this rare shade on cover.

Expertise: Signed E. Diena, "AD" Alberto Diena, Cert. Giacomo Bottacchi, AIEP. (2026).

Please ensure your bids arrive on time!

In the case of equal bids, the first bid received will take precedence.

VERY IMPORTANT EARLY USAGE



30131

✉ / 7d

4'000 - 6'000

1859 2 Gr. plate II, ultramarine (azzurro oltremare), two singles, on 1859 registered envelope to Mazzara, red oval framed Assicurata plus red oval framed SAMBUCA despatch, which is partly overstruck by Palermo arrival cds, this arrival dated 3rd January.

Probably posted on the first or second day of issue.

Expertise: Cert. Giacomo Bottacchi, AIEP. (2026).

FIRST DAY USAGE JANUARY 1ST, 1859



30132

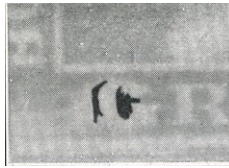
✉ / 7d

8'000 - 12'000

1859 (1 Gen) 2Gr. ultramarine (azzurro oltremare), very "dry" print, cover front from Palermo to Bisacquino tied by both frame handstamp and despatch cds, a fine legible date of **first day of issue**.

One of the finest of all the Sicilian First Day Usages. Only four covers and one front with 2Gr. franking recorded.

Expertise: Signed A.Diena, Russo, Cert. Alberto Diena (1969), Giacomo Bottacchi, AIEP. (2026).



30133

田 (☒) / 7g

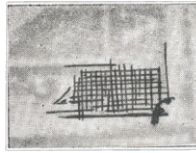
7'000 - 10'000

1859 2 Gr. plate II, light blue (azzurro chiaro), two horizontal strips of four, positions 51-54 and 55-58, **position 57 showing retouch**, on a large part 1860 (19.1) folded letter sheet from Messina, with departure circular datestamp alongside.

Spectacular and very rare exhibition showpiece.

Expertise: Signed Russo, E.Diena, A.Diena, Cert. Giacomo Bottacchi, AIEP. (2026).

Retouches (ordered by plate position)

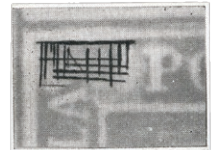
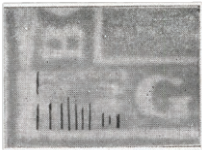


30134 * / 7g

600 - 800

1859 2 Gr. plate II, light blue (*azzurro chiaro*), mint with original white gum, four good margins, showing position 45 retouch, very fine and rare.

Expertise: Signed "ED" Emilio Diena.



30135



30136



30137

30135 ☉ / 7

80 - 120

1859 2 Gr. plate II, blue (*azzurro*), used left sheet marginal single with good margins on other sides, showing retouch position 71, very fine and scarce.

30136 ☉ / 7

180 - 240

1859 2 Gr. plate II, bright blue (*azzurro vivo*), four margined horizontal pair positions 81-82, showing position 81 with retouch, very fine and scarce.

30137 ☉ / 7d

180 - 240

1859 2 Gr. plate II, ultramarine (*azzurro oltremare*), used single with four good margins, showing position 83 retouch, very fine and scarce.

2 Grana, Plate III

Stamps

COMPLETE USED RECONSTRUCTION OF THE 2 GRANA PLATE THREE



30138

© / 8

800 - 1'000

1859 2 Gr. plate III, used (reconstruction), with 8 positions present in duplicate copies. 108 used stamp in total. Pos. 77-78 and 79-80 in attractive pairs. Generally full-margined examples, with a few cut close in places. Mostly attractive stamps with fresh colours overall and most with dealers' or experts' signatures or handstamps, e.g. Diena. An impressive complete plate reconstruction in a very fine state of preservation (108).

OUTSTANDING MINT BLOCK OF TWENTY-FIVE



30139 *** 田 / 8

800 - 1'200

1859 2 Gr. plate III, light blue (*azzurro chiaro*), mint with original white gum, a right-hand sheet marginal block of twenty-five (5 x 5), positions 36-40/46-50/56-60/66-70/76-80, horizontal crease through second row with hinge strengthening. **Very fresh, extremely fine and a wonderful exhibition showpiece.** Expertise: Signed E.Diena, Cert. Giacomo Bottacchi, AIEP. (2026).

LARGEST RECORDED USED MULTIPLE



30140 © / 8a

2'400 - 3'000

1859 2 Gr. plate III, very dark blue (*azzurro scurissimo*), a horizontal **strip of six**, positions 15-20, close to good margins, two with thin spots, very fine used, believed to be the largest recorded multiple for this shade. Expertise: Signed A.Diena, Russo, Cert. Giacomo Bottacchi, AIEP. (2026).



30141 * 田 / 8b

2'000 - 3'000

1859 2 Gr. plate III, greenish blue (*azzurro verdastro*), mint **block of four** with original gum, position 39-40/49-50, good to large margins, fresh, very fine and an extremely rare mint multiple.

Expertise: Signed A.Diena, E.Diena, Cert. Giacomo Bottacchi, AIEP. (2026).



30142 ◎ / 8c

80 - 120

1859 2 Gr. plate III, bright blue (*azzurro vivo*), used right-hand sheet marginal, very fine and scarce.



30143 ◎ / 8e

8'000 - 12'000

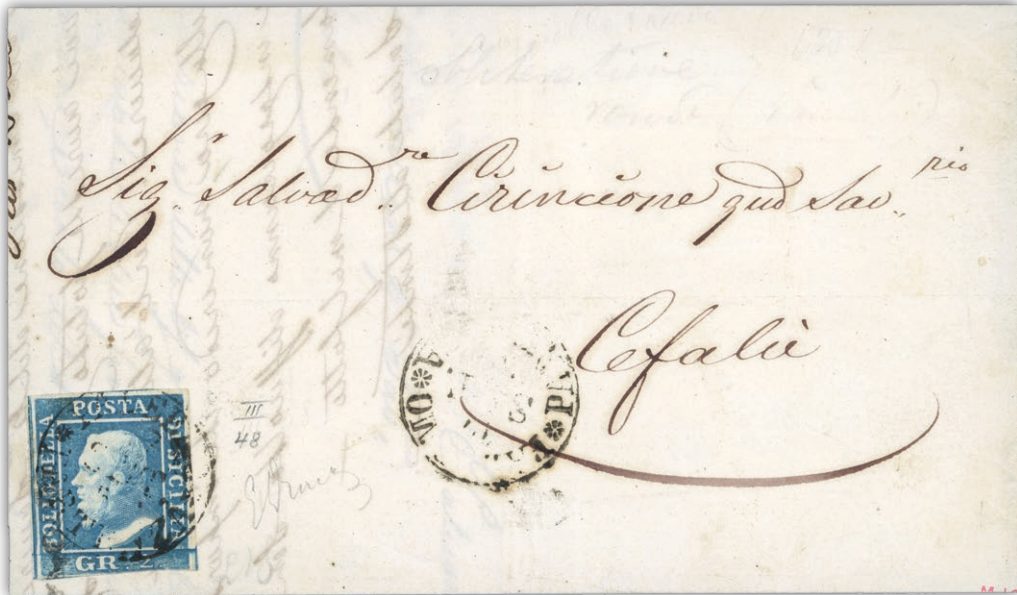
1859 2 Gr. plate III, greenish blue (*azzurro verdastro*), used with four even margins, showing a variety **printed on both sides**.

An important error and rarity of classic Sicilian philately.

Expertise: Signed A.Diena, Cert. A.Diena (1958), Giacomo Bottacchi, AIEP. (2026).

Find a bid form on the **last page** of this catalogue.

Covers



30144

✉ / 8

400 - 600

1859 2 Gr. plate III, blue (azzurro), single from position 48, touched to good margins, on 1859 (17.9) entire to Cefalu bearing single franking tied only by Palermo Partenza cds and unusual like this, very scarce.

Expertise: Signed E.Diena, Cert. Giacomo Bottacchi, AIEP. (2026).



30145

✉ / 8, 12a

7'000 - 10'000

1859 2 Gr. plate III, light blue (azzurro chiaro), very rare horizontal strip of six, positions 11-16, plus a horizontal pair of the 10Gr. black indigo (indaco nero) (position 11 retouch), on 1860 (9.7) cover to Genova, carried by French packet, variable margins with slight defects, remaining are fine, attractive and desirable 32 Grana rate.

Expertise: Signed A.Diena, E.Diena, Cert. Alberto Diena (1942), Giacomo Bottacchi, AIEP. (2026).



30146

✉ / 8b, 4b

4'000 - 6'000

1859 (17.8) Folded registered entire to Palermo franked **2 Gr. plate III**, greenish blue (*azzurro verdastro*), horizontal strip of five plus 1Gr. plate II, olive brown (*bruno oliva*) pair, oval-framed **BARCELLONA/POZZO DI GOTTO** despatch handstamp, unframed straight-line **Assicurata** at centre, Palermo arrival cds to left, an outstanding 12 grana franking paying the 3/4 ounce domestic registered rate.

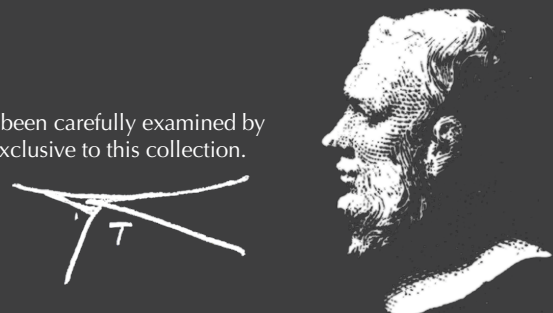
The largest recorded multiple of this very rare shade. Showpiece.

Expertise: Signed Russo, A.Diena

Expert's Statement:

The vast majority of Mario Tomasini's Sicily collection in the present catalogue, has been carefully examined by Mr Giacomo Bottacchi, AIEP and signed by him in pencil with a special signature exclusive to this collection.

After thorough inspection, he has concluded that the descriptions, attributions and technical details provided are, to the best of his knowledge and belief, correct and prepared in accordance with accepted professional standards.



5 Grana, Plate I

Stamps

PARTIAL USED RECONSTRUCTION OF THE 5 GRANA UNUSED AND PLATE ONE



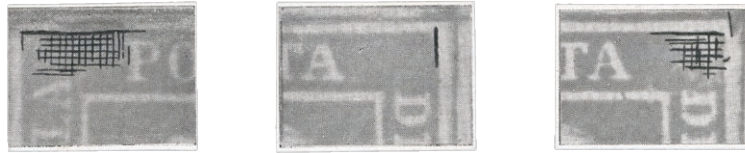
30147

*** © 田 F / 9

4'000 - 6'000

1859 5 Gr. plate I, unused and used (reconstruction). 13 positions missing and 21 positions present in duplicate or triplicate copies. **116 stamps** in total of which the majority are used, but with many unused or mint, mostly with original gum, and some without gum. With all of the better retouches of this plate catalogued in Sassone. Pos. 46-48 in attractive mint strip of three. Generally full-margined examples, with a few cut close or into in places. Attractive stamps with fresh colours overall and most with dealers' or experts' signatures or handstamps, e.g. Diena (116).

OUTSTANDING MINT BLOCK OF TWENTY-FIVE



30148 *** 田 / 9

3'600 - 4'600

1859 5 Gr. plate I, carmine pink (*rosa carminio*), mint top right-hand corner sheet marginal **block of 25** (5 x 5), positions 6-10 to 46-50, showing retouches in positions 9, 10, 19 and 46, with full original light brownish gum, a fine mint multiple.

Exhibition showpiece.

Expertise: Cert. Giacomo Bottacchi, AIEP. (2026).



30149



30150

30149

* / 9

150 - 200

1859 5 Gr. plate I, carmine pink (*rosa carminio*), mint single with usual brownish original gum, good even margins, very fine and scarce. **Expertise:** Signed "ED" Emilion Diena, "AD" Alberto Diena

30150

* / 9a

120 - 160

1859 5 Gr. plate I, carmine (*carminio*), mint with usual brownish original gum, four good even margins, small staining on cheek, very fine and scarce. **Expertise:** "AD" Alberto Diena.



30151



30152

30151

* / 9c

600 - 800

1859 5 Gr. plate I, blood red (*rosso sangue*), position 6, mint with usual original brownish gum, four good margins, fresh, very fine and a rare mint shade. **Expertise:** Signed A.Diena, Cert. A.Diena (1957)

30152

© / 9d

400 - 600

1859 5 Gr. plate I, brownish red (*rosso brunastro*), position 70, right sheet marginal single, used framed cancel, very fine and an extremely rare shade. **Expertise:** Signed "AD" Alberto Diena, Cert. A.Diena (1959).



30153

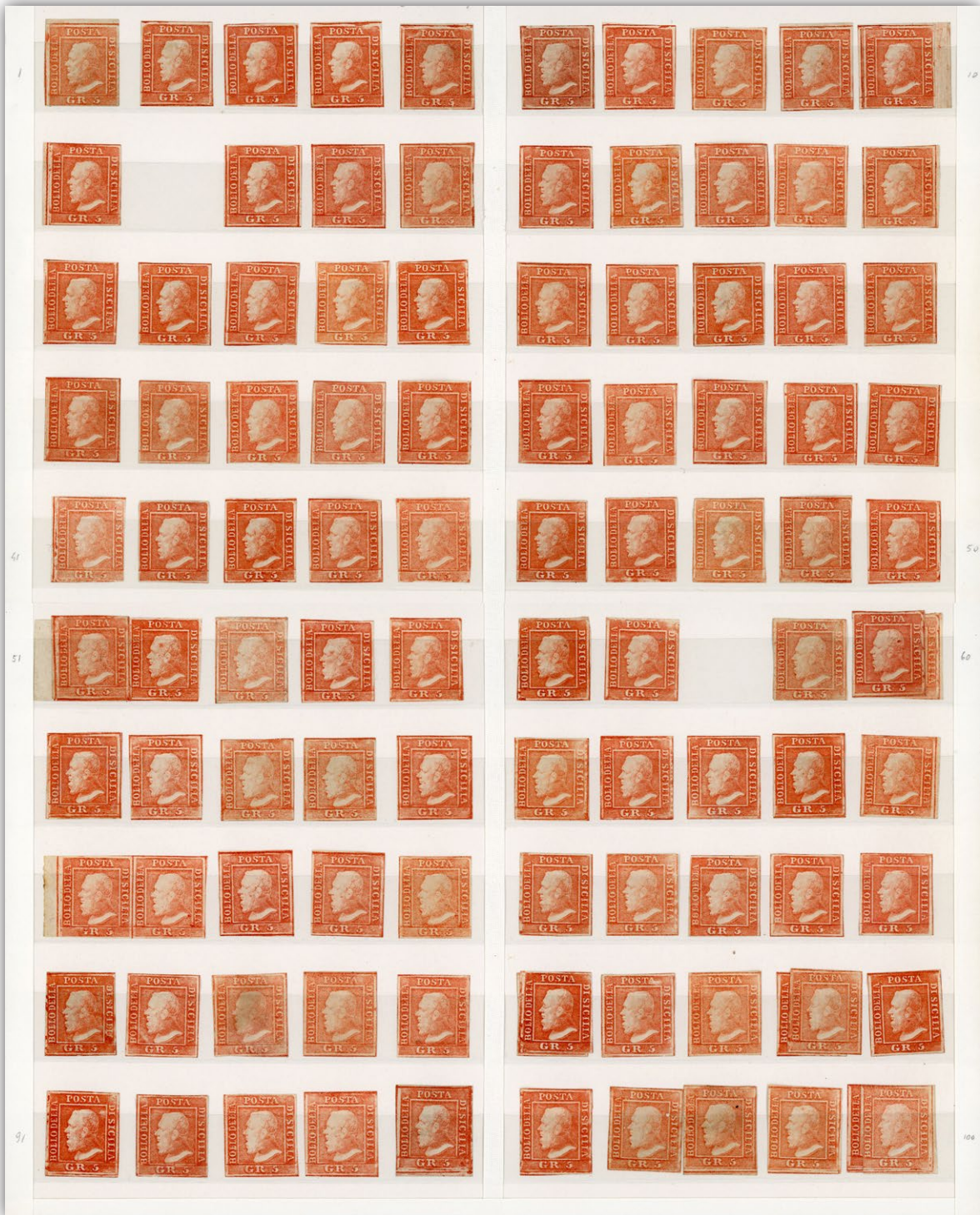
* / 9d

1'200 - 1'600

1859 5 Gr. plate I, reddish brown (*rosso brunastro*), mint with usual original brownish gum, close to large bottom margins, small part marginal at base, very fine and an extremely rare shade.

Expertise: Signed A.Diena, Cert. A.Diena (1964)

PARTIAL UNUSED RECONSTRUCTION OF THE 5 GRANA PLATE ONE



30154

** * / 10

4'000 - 6'000

1859 5 Gr. plate I, unused (reconstruction). Positions 12 and 58 missing and 6 positions present in duplicate copies. **104 stamps** in total of which the majority are unused mint, most with original gum, also some without gum. With all of the better retouches of this plate catalogued in Sassone. Pos. 51-52 and 71-72 in very attractive pairs. Generally full-margined examples, with a few cut close or into in places. Attractive stamps with fresh colours overall and most with dealers' or experts' signatures or handstamps, like Diena. An exceptional and almost complete plate reconstruction of only mint/unused stamps (104).

OUTSTANDING POSITIONAL MINT BLOCK OF NINE



30155

** * 田 / 10

3'600 - 4'600

1859 5 Gr. plate I, vermilion (*vermiglio*), mint top left corner sheet marginal **block of nine** (3 x 3), showing original gum, the bottom row folded, an extremely fresh and a very fine mint multiple.

Expertise: Signed G.Bolaffi, "AD" Alberto Diena, Cert. Giacomo Bottacchi, AIEP. (2026).



30156

◎ / 10

900 - 1'200

1859 5 Gr. plate I, vermilion (*vermiglio*), used horizontal pair, positions 13-14, four margins, fresh and very fine, a rare shade in pair.

Expertise: Signed Asinelli handstamp, E.Diena pencil initials, Cert. Giacomo Bottacchi, AIEP. (2026).

Covers

THE GREATEST COVER OF THE FIVE GRANA



30157 ✉ / 9

40'000 - 60'000

1859 5 Gr. plate I, carmine rose (*rosa carminio*), **two horizontal strips of four** and pairs of 10 Gr. and 2 Gr., each stamp with fine frame cancel, light vertical creases in both strips, mounted onto paper for better presentation, all on 1859 (25.6) large folded registered (**Assicurata**) cover from Cefalu to Palermo.

Undoubtedly, the most important franking of the 5 Grana value and the first time it has been shown as a complete cover.

A spectacular franking and one of the only two listed 64 Grana rated covers listed in Sassone.

Expertise: Signed A.Diena, Russo, Cert. Giacomo Bottacchi, AIEP. (2026).



A UNIQUE UNRECORDED FRANKING



30158

✉ / 9a, 6b, 12

800 - 1'200

1860 (2.1) Folded letter sheet from Messina to Genova, franked 10 Gr. dark blue (*azzurro cupo*), 5 Gr. **horizontal strip of four**, plate I, carmine (*carminio*) and bottom marginal 2 Gr. plate I blue (*azzurro*), French maritime three-line red handstamp, arrival backstamp, the bottom margin of the 5 Gr. strip is repaired, an attractive-looking cover, an unrecorded franking in Sassone, paying the 1 ½ sheet letter

Expertise: Signed Russo, Cert. Giacomo Bottacchi, AIEP. (2026).

Bidding Steps

50-100	→	5	500-1000	→	50	10'000-20'000	→	1'000
100-200	→	10	1'000-2'000	→	100	20'000-50'000	→	2'000
200-500	→	20	2'000-5'000	→	200	50'000-100'000	→	5'000
			5'000-10'000	→	500	100'000-200'000	→	10'000

Bids between these steps will be adjusted accordingly to the next higher bid step.

AN OUTSTANDING AND UNIQUE TWENTY-TWO GRANA FRANKING



30159

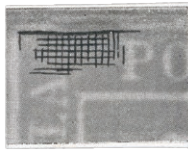
✉ / 10

12'000 - 16'000

1859 (9.7) Folded letter sheet from Messina to Torino, franked with four singles of the **1859 5 Gr. plate I**, vermilion (*vermiglio*) and a 2 Gr., tied three-line red French maritime handstamp, Genova transit and arrival date stamp; fine and clean condition, an unlisted combination in Sassone, paying the 1 sheet letter rate with French packet to the Kingdom of Sardinia.

Expertise: Signed Russo, Cert. Giacomo Bottacchi, AIEP. (2026).

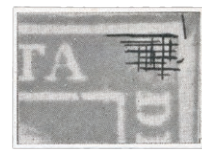
Retouches (ordered by plate position)



30160



30161



30162

30160 * / 10

70 - 90

1859 5 Gr. plate I, vermilio (*vermiglio*), mint single with original white gum, showing **position 10** retouch with reinforcing lines top left, close to good margins, slight yellowing on face, very fine and scarce.

Expertise: Signed E.Diena

30161 * / 10

180 - 240

1859 5 Gr. plate I, vermilion (*vermiglio*), mint with original thin white gum, close to good margins, showing **position 46** with retouch vertical line top right corner, very fine and scarce.

Expertise: Signed "ED" Emilio Diena.

30162 * / 10

70 - 90

1859 5 Gr. plate I, vermilion (*vermiglio*), mint with original white gum, close to good margins, showing **position 46** with retouch, very fine and scarce.

The
TOMASINI COLLECTIONS

Be sure to participate in the auction of
CLASSIC GB (PART I)

of Classic
Great Britain
& Sicily

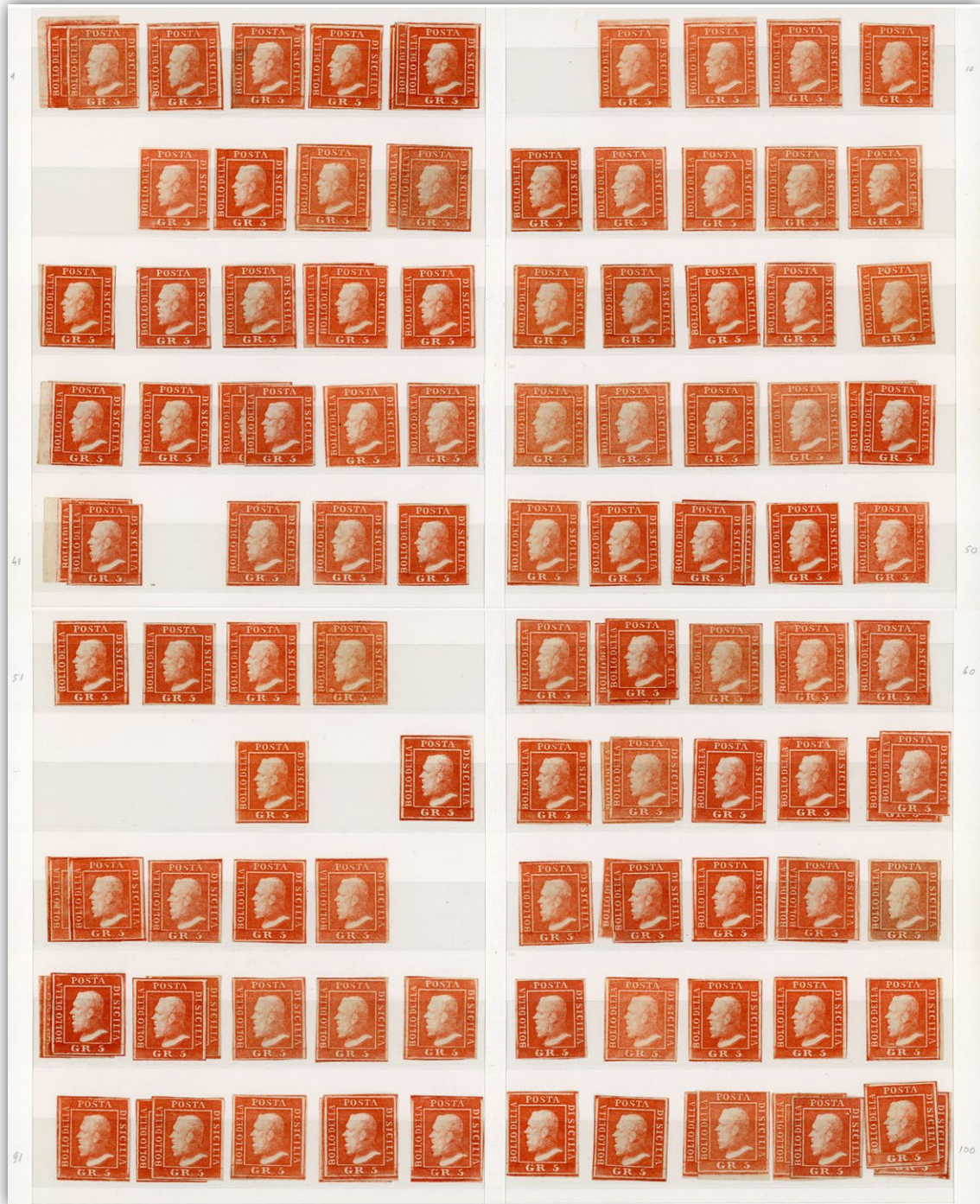


March 26, 14:00 CET

5 Grana, Plate II

Stamps

PARTIAL UNUSED RECONSTRUCTION OF THE 5 GRANA PLATE TWO



30163

*** (*) / 11

4'000 - 6'000

1859 5 Gr. plate II, unused (reconstruction), 8 positions missing and 21 positions present in duplicate or triplicate copies. **116 stamps** in total of which the majority are unused mint, with original gum and some without gum. With the retouch in pos. 90 catalogued in Sassone. Generally full-margined examples, including a couple with sheet margins, a few cut close or slightly into in places. Attractive stamps with very fresh colours overall and most with dealers' or experts' signatures or handstamps, like Emilio or Alberto Diena (116)



30164 * 田 / 11

800 - 1'200

1859 5 Gr. plate II, vermilio (*vermiglio*), mint with original white gum on right-hand sheet marginal **block of six**, positions 28-30/38-40, fresh, very fine and a rare mint multiple.

Expertise: Signed "AD" Alberto Diena, Cert. Giacomo Bottacchi, AIEP. (2026).

THE UNIQUE DOUBLE PRINT ERROR



30165 © / 11

3'000 - 5'000

1859 5 Gr. plate II, vermilion (*vermiglio*), used with four close to good margins, showing clear **double impression**, thin, very fine and the only known example from plate II, unlisted.

Expertise: Cert. Giacomo Bottacchi, AIEP. (2026).

Expert's Statement:

The vast majority of Mario Tomasini's Sicily collection in the present catalogue, has been carefully examined by Mr Giacomo Bottacchi, AIEP and signed by him in pencil with a special signature exclusive to this collection.

After thorough inspection, he has concluded that the descriptions, attributions and technical details provided are, to the best of his knowledge and belief, correct and prepared in accordance with accepted professional standards.



OUTSTANDING CORNER SHEET MARGINAL BLOCK OF TWENTY FIVE



30166 *** 田 / 11a

4'000 - 6'000

1859 5 Gr. plate II, bright vermilion (*vermiglio vivo*), mint top right corner sheet marginal **block of 25** with original white gum, positions 6-10 to 50-56, close to large margins, fresh, and an extremely fine exhibition showpiece.

Expertise: Cert. Giacomo Bottacchi, AIEP. (2026).



30167

30167 * 田 / 11a

900 - 1'200

1859 5 Gr. plate II, bright vermilion (*vermiglio vivo*), mint bottom sheet margin **block of four**, positions 86-86/96-97, fresh, very fine and a rare mint multiple.

Expertise: Signed "AD" Alberto Diena, Cert. Giacomo Bottacchi, AIEP. (2026).

30168 © / 11a

3'000 - 4'000

1859 5 Gr. plate II, bright vermilion (*vermiglio vivo*), used horizontal **strip of three**, showing clear framed cancels and close to good margins, very fine and an extremely rare used multiple, unpiced in Sassone.

Expertise: Signed E.Diena, A.Diena, Cert. Giacomo Bottacchi, AIEP. (2026).

Covers



30169 ☒ / 11

400 - 600

1860 (18.6) Folded entire to Torino, franked four single 5 Gr. plate II and a 2 Gr, the first 5 Gr. which is actually plate I, appears to have been added. Still, a very rare usage during the Messina siege, paying the 1 sheet letter rate by French packet to Sardinia.

Expertise: Signed E.Diena, A.Diena, Cert. Giacomo Bottacchi, AIEP. (2026).

10 Grana

Stamps

PARTIAL UNUSED AND USED RECONSTRUCTION OF THE 10 GRANA



30170

** * © (*) / 12

3'000 - 4'000

1859 10 Gr. unused and used (reconstruction). 6 positions missing and 8 positions present in duplicate or triplicate copies. **105 stamps** in total of which the majority are unused mint, most with original gum, a few without gum, also a few used stamps on piece. With most of the better retouches catalogued in Sassone. Generally full-margined examples, with a few cut close or into in places; a few stamps noted with minor thin spots. Attractive stamps with very intense and fresh colours overall and most with experts' signatures or handstamps (105).



30171

*** 田 / 12

6'000 - 8'000

1859 10 Gr. dark blue (*azzurro cupo*), mint with original brownish gum, bottom left-hand corner sheet marginal block of twenty-five (5 x 5), position 51/95, showing **retouches 53, 61 and 91**, pre-printing paper fold through four stamps in second row, right to left, hinged at top and base only, small natural paper surface imperfection on 62, very fine.

An outstanding exhibition showpiece.

Expertise: Signed "AD" Alberto Diena, Cert. Giacomo Bottacchi, AIEP. (2026).



30172

△ ◎ / 12, 4c

4'000 - 6'000

1859 10Gr. dark blue (*azzurro cupo*), two singles and **two horizontal strips of three**, plus 1 Gr. light olive brown (*bruno oliva chiaro*), plate II, in two pairs, one of these pairs with touched margins, all tied on fragment. **Note:** Illustrated on page 234 of Aquila

An outstanding combination usage, which was paying the very high 88 Grana rate, a known franking, but not in this combination. A striking exhibition showpiece.

Expertise: Cert. Giacomo Bottacchi, AIEP. (2026).

THE UNIQUE FULL AND COMPLETE DOUBLE IMPRESSION



30173

◎ / 12c

8'000 - 12'000

1859 10Gr. dark blue (*azzurro cupo*), used with close to clear margins all round, showing a full double print variety, small thin spot.

Exhibition Showpiece.

Note: Sassone states that only partial doubling is recorded, hence possibly unique. small thin spot in paper on back at top of head where Diana has pen initialed, Alberto Diana Cert (1952).

Expertise: Signed "AD" Alberto Diana, Cert. Alberto Diana (1952), Giacomo Bottacchi, AIEP. (2026).

Covers



30174 ☒ / 12, 5b

6'000 - 8'000

1859 (15.8) Folded entire Messina to Genova by French packet, franked 10 Gr. in two horizontal pairs, top right corner of top pair with margin fault plus two pairs of 1 Gr., each with framed cancels, red three-line Piroscafi/ Postali/ Francesi, an unrecorded combination paying the two sheet letter rate to Sardinia by French Steamer.

A striking entire paying the stunning 84 Grana rate.

Expertise: Signed A.Diena, Cert. Giacomo Bottacchi, AIEP. (2026).



30175 ✉ / 12b, 9, 6a

4'000 - 6'000

1859 (4.4) Folded entire to Trieste, carried by commercial steamship, charged "8" Austrian soldi to the addressee, endorsed "col Vapore di commercio" and franked 1859 10 Gr. pair close to just touched margin at top, 5 Gr. and pair 2 Gr. plate I positions 71-72, with **position 71 showing a retouch**, all making up the fine 29 grana rate, cancelled with framed handstamps, oval-framed Marsala despatch, Palermo transit and various manuscript rate markings, arrival backstamp, fine and attractive appearance.

Expertise: Signed "AD" Alberto Diena, Cert. Giacomo Bottacchi, AIEP. (2026).



30176 ✉ / 12b

3'600 - 4'600

1859 (1.10) Registered 'Assicurata' cover from Messina to Girgenti, franked 10 Gr. showing **position 67 retouch** ('R' of 'GR') plus 2 Gr. and two 1 Gr. good close to large margins, fine appearance, an unlisted combination paying the 3/4 ounce registered domestic letter rate.

Expertise: Signed "AD" Alberto Diena, Cert. Giacomo Bottacchi, AIEP. (2026).

Retouches (ordered by plate position)



30177 * 田 / 12b

700 - 1'000

1859 10 Gr. indigo (*indaco*), mint with usual original brownish gum, top left corner sheet marginal **block of four**, positions 1-2/11-12, **positions 1 and 11** with retouches, good to large margins, very fine and a rare marginal multiple.

Expertise: Cert. Alberto Diena (1967), Giacomo Bottacchi, AIEP. (2026).



30178

30179

30178 * / 12a

400 - 600

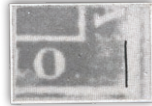
1859 10 Gr. black indigo (*indaco nero*), mint with usual original brownish gum, showing **position 8** retouch (top line above 'POSTA' completely re-cut), good to large margins, extremely rare and possibly **unique** with the retouch in this shade.

Expertise: Signed A. Diena and Giulio Bolaffi, Cert. Giacomo Bottacchi, AIEP. (2026).

30179 * / 12b

180 - 240

1859 10 Gr. indigo (*indaco*), mint with original brownish gum, **position 9** retouch (top right frame line), four good margins, fresh and very fine.



30180



30181



30182

30180 ☉ / 12b **40 - 60**

1859 10 Gr. indigo (*indaco*), used single with close margin bottom left corner to good margins, showing **position 58** retouch (two lines under 'TA' of 'POSTA'), fine and scarce.

Expertise: Signed "AD" Alberto Diena.

30181 (*) / 12b **80 - 120**

1859 10 Gr. indigo (*indaco*), unused without gum, right-hand sheet marginal, showing **position 60** retouch (bottom right corner), good margins on other sides, extremely fine and scarce.

Expertise: Signed "ED" Emilio Diena, "AD" Alberto Diena.

30182 ☉ / 12b **120 - 160**

1859 10 Gr. indigo (*indaco*), used with four even margins, showing **position 67** retouch ('R' of 'Gr'), fresh, very fine and scarce.

Expertise: Signed "ED" Emilio Diena, "AD" Alberto Diena.

Bidding Steps

50-100	→	5	500-1000	→	50	10'000-20'000	→	1'000
100-200	→	10	1'000-2'000	→	100	20'000-50'000	→	2'000
200-500	→	20	2'000-5'000	→	200	50'000-100'000	→	5'000
			5'000-10'000	→	500	100'000-200'000	→	10'000

All bids in Swiss francs (CHF)

Bids between these steps will be adjusted accordingly to the next higher bid step.



30183 * / 12

700 - 1'000

1859 10 Gr. dark blue (*azzurro cupo*), mint with original gum, lower left corner sheet marginal showing position 91 retouch, very large margin at base, extremely fine and very rare in this quality.

An exhibition showpiece.

Expertise: Signed "AD" Alberto Diena, Cert. Giacomo Bottacchi, AIEP. (2026).



30184 ☒ / 12b

600 - 800

1859 (24.5) Folded registered letter sheet Palermo to Catania with oval framed **Assicurata** handstamp, franked 10 Gr. *indaco* showing **position 91** retouch and a 2Gr. plate II, stamps fine and fresh with good margins, some small repairs to the outer letter sheet including filled punch filing hole, an attractive 12 grana franking paying the three-sheet domestic registered letter rate.

Expertise: Signed "AD" Alberto Diena, Cert. Giacomo Bottacchi, AIEP. (2026).

20 Grana
Stamps

PARTIAL UNUSED RECONSTRUCTION OF THE 20 GRANA PLATE ONE



30185

** * © (*) / 13

5'000 - 7'000

1859 20 Gr. (reconstruction), unused and used (x 15). 4 positions missing and 3 positions present in duplicate copies, pos. 6 and 16 in attractive vertical mint pair and 44 and 45 in mint pair. Many with original gum and some without gum. With the better retouch in pos. 72 catalogued in Sassone. Generally full-margined examples, with a few cut close or slightly into in places, some showing sheet margins; one stamp noted with minor thin spots. In all **100** very attractive stamps with fresh colours overall and many with experts' signatures or handstamps (100).



30186

*** 田 / 13

3'000 - 4'000

1859 20 Gr. slate grey (*grigio ardesia*), mint with usual original brownish gum, top right corner sheet marginal block of 16, positions 7-10/17-20/27-30/37-40, small cut between positions 39 and 40, somewhat restored upper margin, does not detract from the exceptionally attractive and fresh mint multiple.

Expertise: Signed E.Diena, "AD" Alberto Diena, Cert. Giacomo Bottacchi, AIEP. (2026).



30187



30188



30189

30187 ☉ / 13 **150 - 200**

1859 20 Gr. slate grey (*grigio ardesia*), used right-hand sheet marginal single used, fine and scarce.

Expertise: Signed E. Diena, A. Diena and Giulio Bolaffi.

30188 * / 13a **800 - 1'200**

1859 20 Gr. black slate (*nero ardesia*), mint with usual original brownish gum, left-hand sheet marginal with good other margins, fresh, extremely fine and rare.

Expertise: Signed "ED" Emilio Diena, "AD" Alberto Diena, Cert. Giacomo Bottacchi, AIEP. (2026).

30189 ☉ / 13a **240 - 300**

1859 20 Gr. black slate (*nero ardesia*), used single with four good even margins, very fine and rare.

Expertise: Signed "AD" Alberto Diena, Cert. Giacomo Bottacchi, AIEP. (2026).



30190 * / 13c **800 - 1'200**

1859 20 Gr. dark slate (*ardesia scuro*), mint with original whitish gum, top right corner sheet marginal with very large uncut top margin, fresh, exceptionally fine exhibition showpiece, unusual in this state.

Expertise: Signed "AD" Alberto Diena, Cert. Giacomo Bottacchi, AIEP. (2026).



30191



30192

30191 ☉ / 13c **360 - 460**

1859 20 Gr. dark slate (*ardesia scuro*), used horizontal pair, close to good margins, fine and scarce.

Expertise: Signed E.Diena, "AD" Alberto Diena, Cert. Giacomo Bottacchi, AIEP. (2026).

30192 * / 13d **360 - 460**

1859 20 Gr. violet slate (*ardesia violaceo*), mint with usual original brownish gum, left-hand sheet marginal vertical pair, positions 51/61, good to large margins on other sides, fresh, exceptionally fine and rare as a marginal multiple.

Expertise: Signed "AD" Alberto Diena

Covers



30193 ✉ / 13 **4'000 - 6'000**

1859 (15.1) Registered cover Palermo to Grigenti, franked 20 Gr. slate grey (*grigio ardesia*), pair 5Gr. carmine red (*rosa carminio*) and 2 Gr., manuscript and oval handstamped **Assicurata**, bottom margin of 2 Gr. touched otherwise good margins; some reinforcing inside top of outer letter sheet, an attractive and colourful 32 grana franking paying the 2 ounce domestic registered letter rate.

Note: Illustrated in Aquila, page 239, photo 231.

Expertise: Signed Russo, Cert. Giacomo Bottacchi, AIEP. (2026).



30194 ☒ / 13, 12b, 11, 6

4'000 - 5'000

1860 (28.5) Folded letter sheet Messina to Napoli, franked 20Gr., 10Gr., 5Gr. and two 2Gr. each with frame cancel, Messina cds at base, arrival backstamp, 10Gr. with just touched margin at top, otherwise all are good to clear, small repair to front of item and name re-written, a fine looking four colour franking, 1Gr. overfranked, the combination unpriced in Sassone, the 39 grana rate pays the double sheet rate and shipped by commercial steamship.

Expertise: Signed E.Diena, Cert. Giacomo Bottacchi, AIEP. (2026).



30195 ☒ / 13c, 4

700 - 1'000

1859 (21.7) Large part folded entire franked 20 Gr. and 1 Gr. with unclear frame cancels, black oval PATTI handstamp at left, Messina transit at right, reverse with Cascina and blue Livorno date stamps, imperfections but still an appealing 21 grana franking the 19 grana rate to Tuscany plus 2 grana internal rate.

Expertise: Signed "AD" Alberto Diena, Cert. Giacomo Bottacchi, AIEP (2026).



30196 ☒ / 13c, 9b, 4

8'000 - 12'000

1859 (14.10) Folded letter sheet to Genova, franked 20 Gr. dark slate (*ardesia scuro*), 5 Gr. dark carmine (*carminio scuro*)(3) and 1 Gr. plate II, each with frame cancel, endorsed "postali francesi", Catania despatch and Messina transit datestamps, red three-line French maritime handstamp, arrival backstamp, reverse with slight faults on opening not detracting from the very fine and colourful appearance of an unrecorded 36 grana franking in Sassone, paying the 1 ½ sheet letter rate made up of 30 grana + 3 grana domestic routing rate.

Expertise: Signed Russo, Cert. Giacomo Bottacchi, AIEP. (2026).

Retouches (ordered by plate position)



30197 (*) / 13c

80 - 120

1859 20 Gr. dark slate (*ardesia scuro*), unused without gum, showing **position 72** retouch, four even margins, very fine and scarce.

Expertise: Signed "AD" Alberto Diena, Cert. Giacomo Bottacchi, AIEP. (2026).

Find a bid form on the **last page** of this catalogue.

50 Grana

Stamps

PARTIAL UNUSED RECONSTRUCTION OF THE 50 GRANA



30198

** * (*) / 14

6'000 - 9'000

1859 50 Gr. unused (reconstruction). 5 positions missing and 12 positions present in duplicate copies, pos. 84 and 85 in an attractive mint pair. Nearly all with full or large part original gum, a few without gum. With the better retouches in pos. 67 and 93 catalogued in Sassone. Generally full-margined examples, with a few cut close or into in places, many showing margins; one stamp noted with minor thin spots. In all **110** very attractive stamps with fresh colours overall and most with experts' signatures or handstamps (110).



30199 *** 田 / 14

4'000 - 6'000

1859 50 Gr. brown lake (*lacca bruno*), mint with original brownish gum, top right corner sheet marginal block of 25 (5 x 5), small imperfection in bottom left corner and some browning in margin at top right, otherwise a very fine and attractive multiple.

Exhibition showpiece.

Expertise: Cert. Giacomo Bottacchi, AIEP. (2026).



London 1960

Many of the items from the Tomasini Collection of Classic Sicily were exhibited in the 1960 London International Stamp Exhibition, including the wonderful 50 Gr. block of 25 shown on the previous page.





30200 ☉ / 14

800 - 1'200

1859 50 Gr. brown lake (*lacca bruno*), used showing a dry printing, with four even margins, very fine and rare.

Expertise: Cert. Alberto Diena (1960), Cert. Giacomo Bottacchi, AIEP. (2026).



30201 *** * 田 / 14b/d

1'800 - 2'400

1859 50 Gr. dark lake brown-violet (*lacca bruno scuro violaceo*), mint with usual original brownish gum, right-hand sheet marginal **block of six (3 x 2)**, positions 58-60/68-70, position 70 with variety double engraving, good margins on other sides.

Exhibition showpiece.

Expertise: E.Asinsali handstamp and signed "AD" pencil by Alberto Diena, Cert. Giacomo Bottacchi, AIEP. (2026).

The
TOMASINI COLLECTIONS

Be sure to participate in the auction of
CLASSIC GB (PART I)

of Classic
Great Britain
& Sicily



March 26, 14:00 CET

Covers



30202 ☒ / 14, 11a

24'000 - 30'000

1860 (5.3) Folded letter sheet from Messina to Genova, franked 50 Gr. brown lake (*lacca bruno*) and 5 Gr. plate II, bright vermilion (*vermiglio vivo*), tied framed cancels, each fresh with four margins, endorsed to travel by French ship with three-line red handstamp PIROSCAFI POSTALI FRANCESI, arrival backstamp.

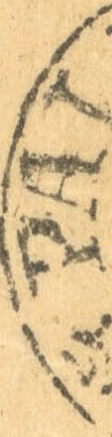
A wonderful Fifty Grana usage paying the ship letter rate, two and a half sheets to Sardinia by French Packet, charged "4" on arrival, Sardinian 2nd step weight letter.

Expertise: Signed Russo, G.Bolaffi, A.Diena, Cert. Giacomo Bottacchi, AIEP. (2026).



III

77



[Handwritten flourish]

[Handwritten signature]

Classic Sicily

Cancellations* (ordered by towns alphabetically)	30203-30246
Acireale	30203
Augusta	30204
Barrafranca	30205
Barcellona/Pozzo di Gotto	(30083, 30146)
Bivona	30206
Brolo	30207
Bronte	(30096)
Caltavuturo	30208
Canicatti	30209
Castelbuovo	30210
Castelvetrano	(30115)
Casteltermini	(30084), 30211
Catania	30212
Cefalu	30213
Centorbi	30214
Corleone	30215
Francofonte	30216
Girenti	(30046, 30098)
Leonforte	(30038, 30069, 30099), 30217
Licata	30218
Lipari	30219
Modica	(30097), 30220
Montemaggiore	30221
Naro	30222-30223
Palagonia	30224
Palazzolo	30225
Palermo Partenza	30226
Partinico	30227
Patti	(30195), 30228
Polizzi	30229
Pet. Soprana	30230
Piedimonte	30231
Pietraperzia	30232
Regalbuto	30233
Riposto	30234
Roccapalumba	30235
Sambuca	(30131)
Santa Caterina	(30128)
S. Agata V.D.	(30101)
S. Caterina Villarmosa	30236
Salemi	30237
Sciacca	(30109)
Scicli	30238
Siculiana	30239
Siracusa	(30100), 30240
Spaccafurno	30241
Spadafora	30242
Terranova	30243
Valllunga	30244
Vizzini	30245-30246
Maritime Mail	(30103), 30247-30252

* Lot numbers in brackets are in the 1859 Issue section

Cancellations (ordered by towns alphabetically)



30203



700 - 900

ACIREALE: 1859 (8.4) Folded letter sheet to Palermo, franked 2 Gr. plate I, NA paper (Sass. 6f), position 79, showing oval ACIREALE in grey-black alongside (Ocf - P.12), very fine and scarce.



30204



150 - 200

AUGUSTA: 1859 (25.1) Folded letter sheet to Catania, franked 2 Gr. plate I, NA paper (Sass. 6a), position 26, showing oval AUGUSTA in black alongside (Ocf - P.11), very fine.



30205



700 - 900

BARRAFRANCA: 1861 (6.7) Folded letter sheet to Palermo, franked Sardinia 10c light olive green (Sass. 14Caa), tied by oval BARRAFRANCA in grey-black (Ocf - P.13), very fine and scarce, paying the Sicilian domestic rate.
Expertise: Signed E.Diena, Cert. Giacomo Bottacchi, AIEP. (2026).



30206



500 - 800

BIVONA: 1859 (29.5) Folded letter sheet sent within Palermo, franked 2 Gr. plate II, NA paper (Sass. 6a), position 96, showing oval BIVONA in black alongside (Ocf - P.13), very fine and rare.
Expertise: Cert. Giacomo Bottacchi, AIEP. (2026).



30207



800 - 1'200

BROLO: 1861 (3.6) Folded letter sheet to Palermo, franked Sardinia 10c light bistre-brown (Sass. 14Cc), tied by oval BROLO in grey-black (Ocf - P.R1), with similar alongside, very fine and scarce, paying the Sicilian domestic rate.

Expertise: Signed A.Diena, Russo, Cert. Giacomo Bottacchi, AIEP. (2026).



30208



500 - 800

CALTAVUTURO: 1859 (3.8) Folded letter sheet sent to Palermo, franked Sardinia 10c light grey bistre (Sass. 14Cc), tied oval CALTAVUTURO in black (Ocf - P.13) with similar alongside, extremely fine and rare. **Expertise:** Cert. Giacomo Bottacchi, AIEP. (2026).



30209



1'500 - 2'000

CANICATTI: 1859 (29.5) Folded registered letter sheet sent within Palermo, franked 2 Gr. plate I, PA paper (Sass. 6g), three singles from positions 62, 67, 68, showing red oval CANICATTI and similar coloured ASSICURATA alongside (Ocf unlisted in Sassone), very fine double rated registered usage. **Note:** The oval cancellations are in red and not brownish red as stated in the Sassone, and oval Assicurata is unlisted in this colour.



30210



200 - 250

CASTELBUOVO: Sardinia 10c olive bistre (Sass. 14D) on fragment partly tied by manuscript "Castelbuovo" with Cefalu cds alongside, dated 11 of April 1862, unusual and very rare. **Expertise:** Signed A.Diena, Cert. Giacomo Bottacchi, AIEP. (2026).

Please ensure your bids arrive on time!

In the case of equal bids, the first bid received will take precedence.





30211



150 - 200

CASTELTERMINI: 1859 (11.5) Folded letter sheet, missing lower backflap, to Palermo, franked 2 Gr. plate I, NA paper (Sass. 6a), position 95, showing clear red boxed CASTELTERMINI alongside (Boxed, red, P.6), very fine.



30212



150 - 200

CATANIA: 1861 (6.3) Folded stampless entire routed through Switzerland to Vicenza, the only possible way to send the letter with the prepaid method, showing the Sassone unlisted double framed fancy oval FRANCA, array of transit bs including one date 17th of March, 1861, being the date of the proclamation of the Kingdom of Italy, very rare and an attractive item.

The currency of the auction is the Swiss franc.

CHF



30213



500 - 800

CEFALU: 1859 (12.3) Folded registered letter sheet to Palermo, franked 2 Gr. plate I, NA paper (Sass. 6a), position 62 and 64, with fancy oval CEFALU in grey-black (Ocf - P.12) with oval ASSIURATA in black alongside, very fine and scarce. **Expertise:** Cert. Giacomo Bottacchi, AIEP. (2026).



30214



700 - 1'000

CENTORBI: 1862 Folded entire to Nicosia, franked Italy 1862 10c, neatly canceled by two strike of the superb circular fancy "F.C.", with CENTORBI/14.DIC.62 cds alongside, plus arrival, a very fine and attractive usage of this very rare cancel. **Expertise:** Signed A.Diena, Russo, Cert. Alberto Diena (1962), Giacomo Bottacchi, AIEP. (2026).



30215



100 - 150

CORLEONE: 1859 (8.11) Folded letter sheet to Salemio, franked 2 Gr. plate I, PA paper (Sass. 6), position 762, showing fancy red oval * CORLEONE * alongside (Ocf, red - P.10), very fine and scarce.



30216



700 - 1'000

FRANCOFONTE: 1861 Sardinia 10c olive bistro (*bistro oliva*) (Sassone 14D), touched to large margined vertical pair cancelled by black dotted oval COMUNE DI/FRANCOFONTE mkg (Oval bs dots black - P.13) with similar alongside, on 1862 folded letter sheet to Sirausa, arrival bs, an extremely neat strike of this rare rural postmark. **Expertise:** Cert. Giacomo Bottacchi, AIEP. (2026).



30217



2'000 - 3'000

LEONFORTE: 1859 (11.1) Folded lettersheet to Palermo, franked 2 Gr. dark cobalt blue (*cobalto scuro*) (Sassone 6c), plate I, NA paper, with oval red LEONFORTE (Osf. red - P R3) and arrival cds alongside, a fine and extremely rare usage. One of only two covers recorded with this red oval marking.

Expertise: Cert. Giacomo Bottacchi, AIEP. (2026).



30218



1'000 - 1'500

LICATA: Sardinia 10c grey + 20c blue + 40c red (Sass. 14Cd, 15Dc, 16D), all cancelled on a small fragment by an extremely rare oval LICATA in black (Ocf, black - P.R3), minor faults on two, possibly unique 3-colour franking, showpiece.

Expert's Statement:

The vast majority of Mario Tomasini's Sicily collection in the present catalogue, has been carefully examined by Mr Giacomo Bottacchi, AIEP and signed by him in pencil with a special signature exclusive to this collection.

After thorough inspection, he has concluded that the descriptions, attributions and technical details provided are, to the best of his knowledge and belief, correct and prepared in accordance with accepted professional standards.





30219



500 - 800

LIPARI: 1863 (16.9) Folded letter sheet to Milazzo, franked Sardinia 5c green (light vertical crease) and 10c bistre brown, tied LIPARI cds (Osf. cds - P.12) with similar alongside, a very rare cancellation.

Expertise: Cert. Giacomo Bottacchi, AIEP. (2026).



30220



500 - 800

MODICA: 1861 (19.5) Folded letter sheet Scicli to Palermo, franked Sardinia 10c grey with good to very rare large margins (Sass. 14Cf), tied FRANCA straight-line hs in black with oval MODICA hs alongside (Osf. - P.12), very fine and scarce.

Expertise: Cert. Giacomo Bottacchi, AIEP. (2026).

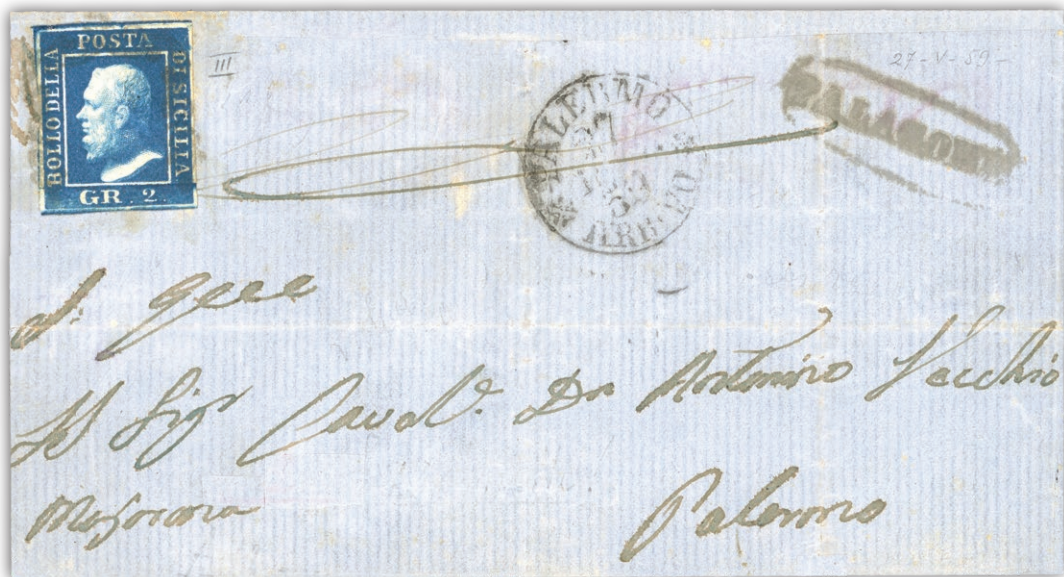


30223



150 - 200

NARO: 1860 Folded letter sheet sent to Messina, franked 2 Gr. plate III, PA paper (Sass. 8), close to good margins, showing black oval fancy NARO alongside (Ocf - black P.11), plus unusual manuscript "francobollo", very fine.



30224



300 - 400

PALAGONIA: 1859 (27.5) Folded lettersheet to Palermo, franked 2 Gr. very dark blue (azzurro scurissimo), Plate III, NA paper (Sassone 8a), with oval black PALAGONIA (Osf. - P.12) and arrival cds alongside, a fine and scarce usage.



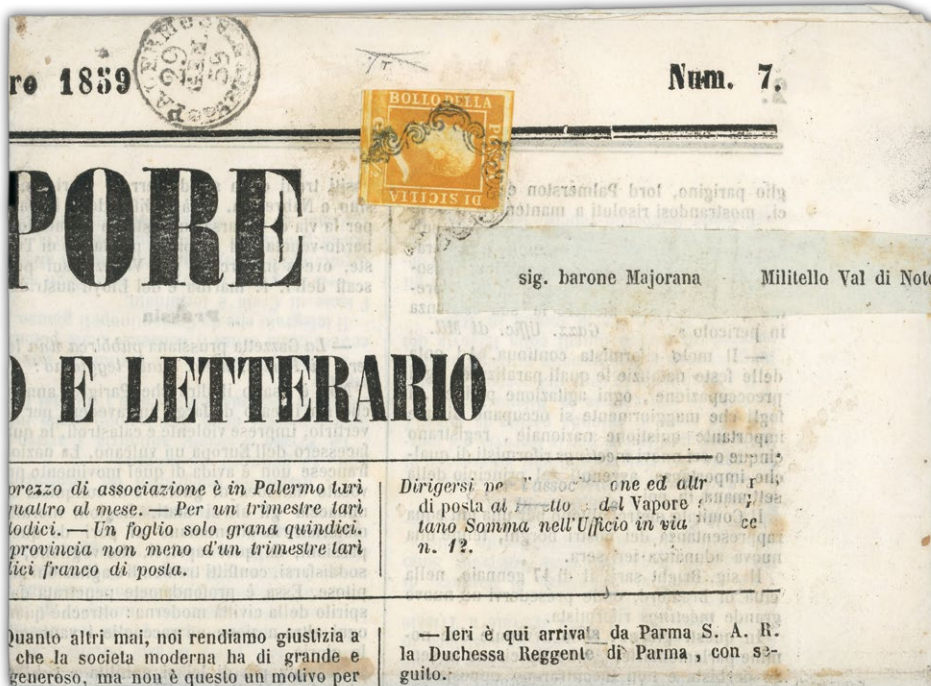
30225



700 - 1'000

PALAZZOLO: Folded letter sheet sent to Noto, franked 2 Gr. plate III, NA paper (Sass. 8c), close to good margins, previously use (postal fraud), showing black oval PALAZZOLO alongside (Ocf - black P.13), a very neat cancellation of this scarce cachet.

Expertise: Cert. Giacomo Bottacchi, AIEP. (2026).



30226



700 - 1'000

PALERMO PARTENZA: 1859 (29.1) Folded newspaper sent to Militello, franked ½ Gr. dark orange, plate I, NA paper (Sass. 1e), touched to large margins, showing very late usage of the PALERMO PARTENZA cds, apparently the last recorded usage of the small circular datestamp of Palermo.

Expertise: Cert. Giacomo Bottacchi, AIEP. (2026).



30227



700 - 1'000

PARTINICO: Sardinia 1861 10c light bistre grey (Sass. 14Cc), just touched to large margined single, tied oval red FRANCA on 1861 folded letter sheet to Palermo, with PARTINICO oval also in red alongside (Franca red OSf + Partinico OSf - P.R1), a very rare usage.

Expertise: Cert. Giacomo Bottacchi, AIEP. (2026).



30228



150 - 200

PATTI: 1859 (15.5) Folded lettersheet to Messina, franked 2 Gr. blue (azzurro) (Sassone 6a), plate I, NA paper, with fancy oval black PATTI (Osf. - P 10) alongside, arrival bs, fine and scarce.



30229



400 - 500

POLIZZI: 1861 (11.7) Registered folded lettersheet to Palermo, franked Sardinia 5c + 10c + 20c (Sassone 13C + 14Cg + 15Dc), all neatly tied by POLIZZI cds, with oval ASSICURATA alongside, a fine colourful franking paying the single rate domestic registered rate, unlisted use of this combination of cancels.

Expertise: Cert. Giacomo Bottacchi, AIEP. (2026).

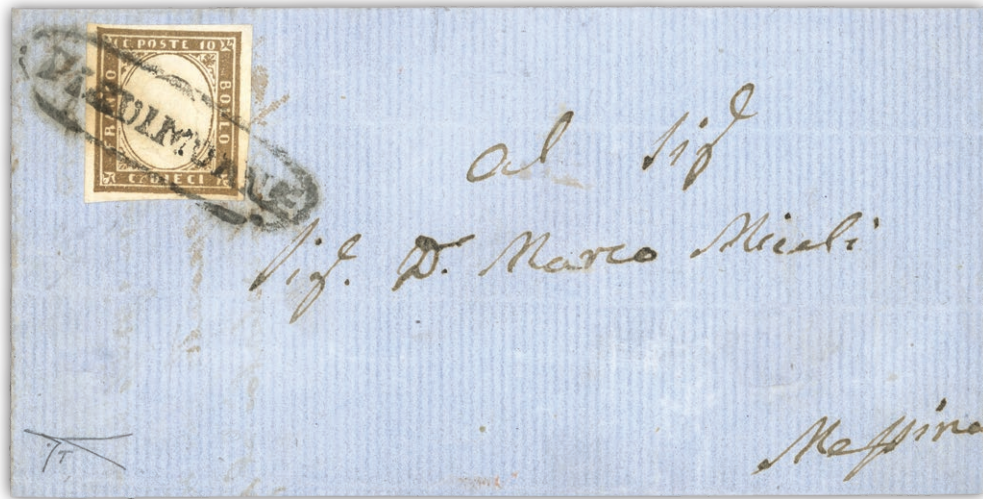


30230



200 - 300

PET. SOPRANA: 1859 (27.7) Cover front to Palermo, franked 1 Gr. light olive brown (*bruno oliva chiaro*) (Sassone 4c), horizontal pair, position 35-36, one showing double engraving, plate II, NA paper, with oval black PET. SOPRANA (Osf. - P 12) and Palermo arrival cds alongside, fine and scarce.



30231



700 - 1'000

PIEDIMONTE: 1861 Sardinia 10c dark brown (Sassone 14Cm), large even margined single tied by black oval PIEDIMONTE mkg (Osf. black - P.12), on 1861 large part folded letter sheet (missing lower backflap) to Messina, a particularly fine strike of the rarely legible postmark.

Expertise: Cert. Giacomo Bottacchi, AIEP. (2026).



30232



500 - 800

PIETRAPERZIA: 1861 Sardinia 10c dark grey bistre (*grigio bistro scuro*) (Sassone 14Cf), large even margined single tied by horseshoe cancel with red oval PIETRAPERZIA mkg alongside (Osf. red - P.12), on 1861 (13.6) folded letter sheet to Palermo, a particularly fine strike of the rarely legible postmark.

Expertise: Signed Russo, Cert. Giacomo Bottacchi, AIEP. (2026).



30233

☒

500 - 800

REGALBUTO: 1861 Sardinia 10c grey (*grigio*) and 20c ultramarine (*azzurro oltremare*) (Sassone 14Cd, 15Dc), touched to large margined singles both neatly tied by superb oval REGALBUTO mkg in black with similar alongside (Osf. - P.R3), on a cover front to Grammichele, paying a domestic triple rate franking, very fine and rare.

Expertise: Signed E.Diena, Cert. Giacomo Bottacchi, AIEP. (2026).



30234

☒

200 - 300

RIPOSTO: 1861 Sardinia Newspaper Stamp 1c light grey (*grigio chiaro*) (Sassone 19d), good to large margined single, strip of four and strip of five, tied by clear black RIPOSTO cds (Cds - P.7), on 1862 (29.11) folded letter sheet to Messina, paying the double rate, two minor faults not detracting from this interesting and attractive franking.



30235



3'000 - 4'000

ROCCAPALUMBA: 1860(23.4) Folded letter sheet to Palermo, franked 2 Gr. light blue, plate III, PA paper (Sass. 8), showing oval ROCCAPALUMBA (Ocf. red - P.R3) in black alongside, and Palermo arrival alongside, internal strengthening of folds, extremely rare. **One of only two recorded to date.**

Expertise: Cert. Giacomo Bottacchi, AIEP. (2026).



30236



400 - 500

S.CATERINA VILLARMOSA: 1861 Sardinia 10c orange ochre (*arancio ocra*) (Sassone 14De), good to large margined strip of three, positions 48-50, tied by clean blue S.CATERINA VILLARMOSA cds, on 1863 (18.11) front cover to Palermo, paying the double rate, a very rare cancel on an uncommon franking.

Expertise: Cert. Giacomo Bottacchi, AIEP. (2026).



30237



700 - 1'000

SALEMI: 1859 (23.5) Folded letter sheet sent to Palermo, franked 2 Gr. plate I, NA paper (Sass. 6d), four margined single, position 89, showing oval blue red SALEMI (Ocf. red - P.8) and Palermo arrival alongside, a very attractive usage.

Expertise: Cert. Giacomo Bottacchi, AIEP. (2026).



30238



500 - 800

SCICLI: 1861 Sardinia 10c dark olive grey (*grigio olivastro scuro*) (Sassone 14Ca), good to large margined single neatly tied by superb straight-line SCICLI mkg in black with similar alongside (SL - P.12), on a 1861 (22.7) folded letter sheet to Palermo, extremely fine and scarce.

Expertise: Signed A.Diena, Russo, Cert. Giacomo Bottacchi, AIEP. (2026).



30239



200 - 300

SICULIANA: 1859 (15.4) Folded letter sheet sent to Palermo, franked 2 Gr. plate II, NA paper (Sass. 7e), left sheet marginal single with pre-printing horizontal paper fold, position 51, showing oval blue fancy SICULIANA alongside (Ocf. - P.6), a very attractive usage.

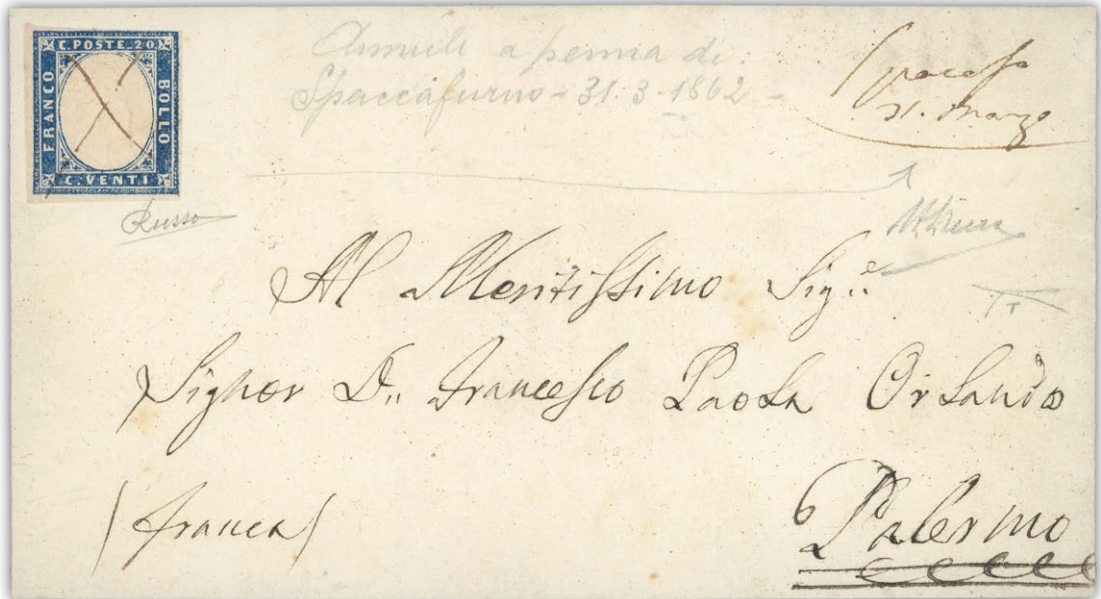


30240



300 - 400

SIRACUSA: 1861 Sardinia 10c dark olive grey (*grigio olivastro scuro*) (Sassone 14Ca), franked six good to large margined singles, all neatly tied by SIRACUSA/12.SET.61 cds with similar alongside, on a 1861 folded letter sheet to Palermo, a rare sixth weight rate in wonderful condition.



30241



2'000 - 3'000

SPACCAFURNO: 1861 (31.3) Folded letter sheet to Palermo, franked Sardinia 1860 20c ultramarine (azzurro oltremare) (Sassone 15Dc), cancelled by pen cross with manuscript "Spacafo 31 marzo" alongside. **A wonderful example of one of the rarest and well-known Sardo-Italian provisional cancellations of Sicily.**

Expertise: Signed A.Diena, Russo, Cert. Giacomo Bottacchi, AIEP. (2026).



30242



4'000 - 5'000

SPADAFORA: 1859 Folded letter sheet sent to Palermo, franked 2 Gr. bright blue (azzurro vivo), plate I, NA paper (Sass. 6f), full left sheet marginal single, position 11, showing oval SPADAFORA in black alongside (Ocf. - P.R3), address re-written, still an important showpiece. **One of the two recorded to date.**

Expertise: Cert. Giacomo Bottacchi, AIEP. (2026).



30243



800 - 1'200

TERRANOVA: 1861 Sardinia 10c light brown (*bruno tenue*) (Sassone 14Ch) large margined single on wrapper, neatly tied by oval TERRANOVA in black (Osf. P.R1), with Savoy coat of arms cachet alongside, a rare emblematic item of the Italian transition period.

Expertise: Cert. Giacomo Bottacchi, AIEP. (2026).



30244



600 - 800

VALLELUNGA: 1860 (17.2) Large part folded letter sheet (missing one sideflap and lower flap) sent to Palermo, franked 2 Gr., plate III, PA paper (Sass. 8), right sheet marginal horizontal pair, position 49-50, showing oval VALLELUNGA and ASSICURATA both in black alongside (Ocf. & Assicurata - P.R1), strengthened folds internally, attractive and rare.

Expertise: Cert. Giacomo Bottacchi, AIEP. (2026).



30245



100 - 150

VIZZINI: 1861 Sardinia 5c greyish olive green (Sassone 13Cb), tied on a small fragment by a neat oval fancy VIZZINI cancel in black (Ocf. - P.R2), defective, still extremely rare usage especially on this stamp.



30246



300 - 400

VIZZINI: 1860 (7.2) Folded letter sheet sent to Palermo, franked 2 Gr. plate II, PA paper (Sass. 7g), position 55, small scissor cut top left, showing oval VIZZINI in black alongside (Ocf - P.13), very fine and rare.

Bidding Steps

50-100	→	5	500-1000	→	50	10'000-20'000	→	1'000
100-200	→	10	1'000-2'000	→	100	20'000-50'000	→	2'000
200-500	→	20	2'000-5'000	→	200	50'000-100'000	→	5'000
			5'000-10'000	→	500	100'000-200'000	→	10'000

Bids between these steps will be adjusted accordingly to the next higher bid step.

All bids in Swiss francs (CHF)

Maritime Mail



30247



400 - 600

MESSINA: "Vapore Comierciale - Posta di Messina" (P.R2) circular cachet in black tying 1861 Neapolitan Provinces 5 Gr. carmine rose, on folded letter sheet to Messina, address restored, a rare strike in its best possible condition.

Expertise: Cert. Giacomo Bottacchi, AIEP. (2026).



30248



1'000 - 1'500

NAPOLI: "Pachetto a Vap di Sicilia Fuori Vagigi (Boxed, red - P.R3) red boxed cachet tying 2 Gr. light blue, plate I, (Sass. 6a) horizontal pair, position 49-50, to folded letter sheet addressed to Naples, an attractive and extremely rare Steamship usage.

Expertise: Signed Russo, Cert. Giacomo Bottacchi, AIEP. (2026).



30249

✉ (✉)

300 - 500

NAPOLI: "Pachetto a Vap di Sicilia Fuori Vagigi (Boxed, red - P.R3) red boxed cachet, alongside 2 Gr. cobalt blue, plate I, (Sass. 6b), two examples on cover and cover front, array of tax mkg's etc, an attractive pair of Steamship usage.

You can view our catalogues and bid during the auction via our website at www.davidfeldman.com



30250



1'000 - 1'500

PALERMO: Naples 2 Gr. brownish pink, plate I (Sass. 6c), tied horseshoe cancels in black on cover and in black on fragment, with red and black Palermo arrivals, cover insufficiently franked with manuscript "2".

Expertise: Cert. Giacomo Bottacchi, AIEP. (2026).



30251



300 - 400

PALERMO: Naples 2 Gr. light rose, plate III (Sass. 7b), horizontal pair, tied by two strikes of the horseshoe cancel in black on 1859 cover to Vittoria, with black PALERMO/PARTENZA arrival alongside, a very fine double rate letter.



30252



300 - 500

PALERMO: Naples 10 Gr. carmine rose, plate II, (Sass. 9), large margined single, insignificant crease, tied by PALERMO/ARRIVO cds, with similar alongside, on 1861 (16.6) folded letter sheet to Palermo, a rare usage during the Kingdom of Italy period, unlisted in the finest condition.

Expertise: Signed "AD" Alberto Diena, Russo, Cert. Giacomo Bottacchi, AIEP. (2026).

Symbols and Condition

Symboles et Condition / Symbole und Erhaltung

Symbols / Symboles / Symbole

*	mint with original gum <i>neuf avec gomme / ungebraucht mit Falz</i>
**	mint never hinged <i>neuf avec gomme intacte / postfrisch</i>
(*)	unused, un gummed or regummed <i>neuf sans gomme ou regommé / ungebraucht ohne Gummi oder nachgummiert</i>
⊙	used <i>oblitéré / gebraucht</i>
⊞	block of four or larger <i>multiple / Viererblock</i>
∩	tête-bêche pair <i>paire tête-bêche / Kehdruckpaar</i>
⊗	fiscal cancel <i>oblitération fiscale / fiskalische Entwertung</i>
△	piece or fragment of a cover or document <i>fragment / Briefstück</i>
✉	cover or postcard incl. postal stationery <i>lettre, carte postale ou entier / Brief, Postkarte oder Ganzsache</i>
E	essay <i>essai / Entwurf</i>
P	proof (incl. die, plate or trial colour) <i>épreuve / Probedruck</i>
R	revenue or fiscal <i>timbre fiscal / Gebührenmarken</i>
S	specimen <i>spécimen / Specimen</i>
F	forgery <i>faux / Fälschung</i>

Condition of Covers / Condition des lettres et entiers / Erhaltung von Briefen

Extremely fine / Superbe / Prachterhaltung

Outstanding, the envelope with only slight wear, fresh stamp and cancel.
/ Qualité irréprochable, l'enveloppe ne présente que de très légères traces d'usure, le timbre est frais et l'oblitération est propre. / Herausragende Qualität, Brief mit minimalen Gebrauchsspuren (Archivqualität), frische Marken und sehr klarer Stempel.

Very fine / Très beau / Sehr schön

Choice condition, the envelope shows typical slight soiling or wear from usage.
/ Qualité premier choix, l'enveloppe peu néanmoins présenter quelques légères salissures et usures. / 1.Wahl, Brief zeigt nur typische leichte Gebrauchsspuren.

Fine to very fine / Beau à très beau / Schön bis sehr schön

Normal condition, the envelope shows a bit heavier wear or soiling.
/ Qualité standard, les traces d'usures sont un peu plus prononcées. / Gewöhnliche aber noch einwandfreie Erhaltung mit etwas stärkeren Gebrauchsspuren (leicht fleckig oder andere leichtere Abnützungen).

Fine / Beau / Schön

Evident wear or other factors (see description and photo), still a presentable example.
/ Evidentes traces d'usures ainsi que d'autres facteurs (voir photo et description) mais exemplaire très présentable. / Offensichtliche Gebrauchsspuren oder andere Mängel (siehe Beschreibung und/oder photo bzw. scan) aber noch immer herzeigbare und sammelwürdige Qualität bzw. Erhaltung.

Please note: Light edge wear, top backflap faults, slight reductions at one side, and file folds are normal for 19th Century covers. Also normal are light cleaning or minor stains and small mends along the edges. They are to be expected and are not always described, and are not grounds for return, nor are factors visible in the illustrations. We will gladly provide full-size scans on request.

Prrière de noter : De légères traces d'usures, défauts au rabat, de légères réductions sur un côté et des plis d'archives sont des caractéristiques normales pour des lettres du 19^{ème} siècle. De légères améliorations au niveau de la propreté ainsi qu'un éventuel ajout de quelques renforts sont également acceptables et ne figurent pas nécessairement dans les descriptions. Ces points ainsi que tous les éléments visibles au niveau de l'illustration ne peuvent par conséquent pas être sujets à réclamation. Des scans supplémentaires d'une pièce peuvent être envoyés sur simple demande.

Bitte beachten: Leichte Eckabnützungen, Mängel der Absenderklappe, leichte Reduktionen an einer Seite und Archivierungsbügel sind als normal für Briefe des 19.Jhdts. anzusehen, ebenso gelten als «normal» leichte Reinigung, kleine (minimale) Stockflecken oder Risschen und Bügel entlang der Briefkanten - diese sind zu erwarten, zu akzeptieren und nicht immer beschrieben (zumeist aber am photo und/oder scan ersichtlich) - diese stellen daher keine Grundlage für Retournierungen dar, ebenso wie auf den photos resp. scans klar ersichtliche Faktoren - Fotos und scans sind immer auch Teil der Beschreibung Im Zweifel können Sie von uns VOR DER Auktion jederzeit Photokopien oder besser auflösende scans verlangen und werden wir Ihnen diese gerne zusenden bzw. mailen.



Consign your collectibles with a reliable partner

Valuations are free and non-binding



1. Contact our specialists

Contact our specialists by phone or email to discuss your needs and to request an estimate of your collectibles.



2. Send us your collectibles

We organise express, tracked, and secure shipping from your home directly to us. Your items are fully insured.



3. Follow the process

Your collectibles are lotted, described, and estimated by our specialists. We promote your treasures to our worldwide client list.



4. Get paid quickly

You are usually paid within 6 weeks after the auction in the method most convenient to you.



David Feldman
International Auctioneers

Chemin du Pavillon 2
1218 Le Grand-Saconnex
Geneva, Switzerland

Phone & WhatsApp +41 22 727 0777
Email info@davidfeldman.com

Contact our specialists today
to make an appointment by
phone or email



www.davidfeldman.com

Conditions of Sale

1. By participating, registering, or obtaining a bidder number in one of David Feldman S.A.'s auctions, one agrees to be bound by the terms and conditions set out below and by the rights and obligations arising therefrom. These same terms and conditions apply to all transactions relating to lots forming part of the auction or concluded outside the auction. DAVID FELDMAN S.A., organiser of this auction, acts exclusively as agent and therefore assumes no liability whatsoever in the event of default(s) by buyers and/or sellers. **The auction is conducted in the name and on behalf of third-party sellers who are directly responsible to the exclusion of DAVID FELDMAN S.A.**

1.1 Lots are offered for sale based on their presentation in the catalogue and/or on the website: Lots are described with the utmost care but without engaging the responsibility of DAVID FELDMAN S.A. Photographs form an integral part of the descriptions.

1.2 There is no responsibility as to the condition of lots with a value of less than CHF 1'500 or its equivalent in other currencies. The catalogue may mention damage to the lots sold but does not draw up an exhaustive list. Bidders may consult the lot condition report, where available, either on the Internet or on request. Lots marked with a square next to the lot number are subject to federal control of precious metals (CMP), whose report is available on request.

1.3 DAVID FELDMAN SA organises one or more lot presentation days at a location in the Canton of Geneva or elsewhere, prior to the sale, where buyers or their agents may examine all lots at the times indicated in the sale catalogue or on our website.

1.4 Buyers have had the opportunity to examine the lots prior to the sale and are deemed to have examined all the lots purchased and to accept them in the condition in which they are found at the time of the auction, irrespective of the description given in the catalogue. This description is given as an opinion only and does not constitute any guarantee as to the authenticity of the items sold. **Except in the case of a prior agreement with David Feldman SA, no claims will be accepted; lots are sold as is.** However, in the context of the sale of philatelic items, clause 3.10 applies.

2. Auction bids

2.1 Each bid must be higher than the previous bid according to at least the following scale: (the currency may change depending on the auction). Unless otherwise indicated in the catalogue and on the website, the Swiss franc is presumed to be the currency of the sale.

50 - 100:	5	10'000 – 20'000:	1'000
100 - 200:	10	20'000 – 50'000:	2'000
200 - 500:	20	50'000 – 100'000:	5'000
500 – 1,000:	50	100'000 – 200'000:	10'000
1'000 – 2'000:	100	200'000 – 500'000:	20'000
2'000 – 5'000:	200	500'000 – 1'000'000:	50'000
5,000 - 10'000:	500	1'000'000 or more:	100'000

Bids between these amounts will be rounded up to the next higher bid.

2.2 Every bid constitutes a binding and irrevocable offer; the bidder remains committed to his/her offer until it is expressly overbid or declined by the auctioneer.

2.3 Double bids are notified immediately, and the bidding process is restarted; if no higher bid is made, the auction is decided by a draw; for equivalent bids from bidders present and absent, priority is given to the written bidder or to the bidder personally present in the case of a telephone bid.

2.4 The hammer price may, exceptionally, be reduced to the lowest winning bid if it is established that the same bidder has inadvertently increased the price by using more than one bidding method.

2.5 Telephone bids are only accepted if the bidders have registered in advance to bid in this way and are known to DAVID FELDMAN S.A. who has

been able to check their solvency. Buyers are charged an administrative fee.

2.6 Only buyers registered with DAVID FELDMAN S.A. who have obtained a bidder number may participate in the auction. Upon request, they must provide proof of identity, address, and bank account details. Upon request, DAVID FELDMAN S.A. reserves the right to limit the maximum bidding amount to certain buyers depending on their financial capacity. For certain buyers, DAVID FELDMAN S.A. may even require the prior deposit of a financial guarantee by credit card or bank transfer.

2.7 Written bids received by DAVID FELDMAN S.A. or on the website prior to the sale take precedence in all cases over bids made in the auction room. They are firm and final. Bidders giving a written bidding order may make alternative bids and/or limit the total amount of their bids. Bids given "to buy" may not exceed more than 10 times the value of the high estimate printed in the catalogue.

2.8 For auctions without an auctioneer, online bids are received by DAVID FELDMAN S.A. on its website. At the end of the auction, at the precise time and minute, the lot is awarded to the highest bidder, at one step above the next highest bid. If the last bidder has bid in the last fifteen seconds of the sale, the auction for this lot is extended by fifteen seconds from the time the last bid was received.

2.9 All written bids are considered binding for 60 days after the auction date. DAVID FELDMAN S.A. is therefore entitled to invoice the bidder for the goods until the expiry of this period. Any invoice received by the bidder is therefore valid and must be paid immediately.

2.10 DAVID FELDMAN S.A. has the right to refuse bids, to separate, join or withdraw any lot at its sole discretion. The sale will be conducted in English or French, but bids may be repeated in any other language. DAVID FELDMAN S.A. is also authorised to bid on behalf of sellers where reserve prices have been set. If the seller sets reserve prices for some of his/her lots, s/he will be deemed to be the buyer and DAVID FELDMAN S.A. will bid on his/her behalf up to the reserve prices set. If the price set by the seller is not reached, the next lot will be auctioned.

3 The auction sale

3.1 Auction Representatives and Agents: The bidder assumes personal responsibility for his/her bid and cannot claim that the purchase was made in the name or on behalf of a third party. The representative is jointly liable for the person s/he represents for compliance with the obligations.

This responsibility extends particularly to checking the quality of the lots purchased and to the subsequent payment of the invoice for the lots purchased.

Bidders who are personally present as representatives of third parties must communicate this unequivocally to the auction management at the latest at the time of the auction.

3.2 Winning bids: Each lot is awarded to the highest bidder on behalf of its respective seller. In addition to the hammer price, **the buyer is charged a 24.5% buyer's commission, plus VAT where applicable.**

VAT of 8.1% is payable by the buyer on the hammer price. For lots marked with a circle next to the lot number, VAT of 8.1% is payable on the buyer's commission only.

3.3 VAT paid may be refunded upon presentation of proof of export. DAVID FELDMAN S.A. will charge an administration fee of CHF 75.00.

Shipping costs will be invoiced separately.

Before the auction, buyers must obtain information on the administrative procedures for the export of lots and their legality. Buyers are solely responsible for any such formalities after the auction. DAVID FELDMAN S.A. can take care of this for a fee.

3.4 When the hammer falls, the profits and risks of the lots thus auctioned pass to the bidder whose bid has been accepted. However, the goods will



not be handed over to the buyer until the purchase price (hammer price plus costs and VAT, if applicable) has been paid in full. Thus, the risks are transferred at the time of the auction. Ownership passes to the buyer once the invoice has been paid in full and possession has been transferred.

3.5 At DAVID FELDMAN S.A.'s request, sales must be officially acknowledged by signature.

3.6 Payment: Successful bidders are obliged to pay the purchase price, plus VAT if applicable, and the commission in cash in the currency of the auction, against surrender of the goods purchased, within a maximum of 5 days of the auction.

Fees charged to DAVID FELDMAN S.A. for credit card payments will be invoiced to the buyer. These vary from 1.5% to 5% depending on the credit card company.

Cash payments are only accepted up to CHF 100'000.

3.7 Payment arrangements: Upon prior request at least 10 days before the sale, DAVID FELDMAN S.A. may, at its own discretion, grant payment arrangements to buyers. The buyer benefiting from such arrangements will pay a minimum amount of 25% of the total invoice within a maximum of 5 days from the date of the sale and will then pay the balance in equal monthly instalments over a maximum period of 4 months. Monthly interest plus costs incurred **at the rate of 1%** is charged by and on behalf of DAVID FELDMAN SA from the date of the sale. Interest is debited monthly to the customer's account. In general, **no lot is delivered without full payment of the hammer price, the sales commission and, if applicable, VAT.**

3.8 Late payment: Payment must be made in cash as soon as the lot is sold. Any buyer who has not paid the hammer price and the commission due in full within a maximum of 5 days of the sale is already in default of payment. In the event of default by the buyer, DAVID FELDMAN S.A. reserves the right (1) to cancel the sale and dispose of the lot(s) concerned and to take legal action against the buyer in order to obtain payment of an indemnity of 24.5% of the hammer price and full payment of the commission due plus interest of at least 1% per month or (2) to enforce the seller's lien in accordance with the above provisions. In addition, expenses incurred by DAVID FELDMAN S.A. in the performance of its obligations hereunder shall be levied in addition on all sums due from the buyer. In addition, the defaulting debtor loses all rights of complaint.

3.9 Right of lien: Until full payment of the amounts due, the buyer grants DAVID FELDMAN S.A., acting on behalf of the Seller, a right of lien on all lots sold but not delivered. This lien guarantees the payment of any amount due past and present, such as the hammer price, the purchase commission, possible VAT, interest, and possible costs. After notice from the buyer, DAVID FELDMAN S.A. is authorised, but not obliged, to realise the pledges without further formalities and without notice if the buyer is in default for the payment of his/her debt or the fulfilment of any obligation. DAVID FELDMAN S.A. may in all cases realise the liens by mutual agreement.

To this end, DAVID FELDMAN S.A. is not obliged to comply with the procedures specified in the Federal Debt Collection and Bankruptcy Act; DAVID FELDMAN S.A. is also free to initiate or continue ordinary debt collection proceedings without first realising the liens and without thereby waiving them.

If the realisation of the lien does not cover the amounts owed by the Buyer, DAVID FELDMAN S.A. is entitled to sue the Buyer for the difference.

3.10 Appraisal or counter-appraisal in the context of the sale of philatelic items only: DAVID FELDMAN S.A. may attach an appraisal to the description of philatelic items, the report of which forms an integral part of the description of the lots, which may be obtained on request. When the authenticity of a lot of philatelic objects is contested, the buyer must produce a certificate of expertise or counter-expertise from

a qualified expert justifying his/her claim, within 30 days of the date of the auction. If the recognised expert, who assumes all responsibility in the event of error, deems that the item has been falsified, s/he may mark it accordingly; the signs "FAKE" or "FORGED" do not then constitute an alteration to the batch of philatelic items.

In the event of such a claim, DAVID FELDMAN S.A. reserves the right to request, at its discretion, one or more subsequent expert appraisals, the costs of which will be borne by the seller if the buyer's claim is well-founded. If the buyer's claim is unfounded, the buyer will bear all the costs incurred. If the claim is well-founded, the lot of philatelic objects will be taken back, and the auction price and commission will be reimbursed in full to the buyer. In the event of delayed payment due to an appraisal approved by David Feldman S.A., interest is payable at 50% of the usual rate for any lot of philatelic objects whose authenticity is confirmed. If David Feldman S.A. does not agree, all interest will be due.

Buyers may request an extension for certification at the time of the adjudication only. For lots with a hammer price of 5'000 or more in the currency of the auction, DFSA will charge a flat handling fee of CHF 100 per item, plus the cost of the certificate. For all other lots DFSA will charge a flat handling fee of CHF 200 per item, plus the cost of the certificate.

3.11 Limits of the guarantee: Batch items described as collections, selections, or groups, those consisting of duplicates and accumulations, cannot be the subject of any claim whatsoever. Claims concerning lots of items described as sets or groups of sets containing more than one stamp will only be considered within the limits of the above article if they relate to more than one third of the total acquisition value of the lot. Lots of items which have been examined by the purchaser or his/her agent, as well as lots of philatelic items which are described as having defects, may not be the subject of any claim in respect thereof. No claim may be made in respect of perforation, centring, margins, or any other feature visible in the illustration of any illustrated batch of items.

3.12 All lots awarded must be removed after the auction by the purchasers within 5 days, at the purchasers' cost and expense. No lot may be picked up during the auction. Lots not picked up will be stored at the buyers' expense for a maximum of 6 months. After this period, the lots will become the property of DAVID FELDMAN S.A., without eliminating the buyers' financial obligations hereunder.

Upon request, DAVID FELDMAN S.A. directly or through a third party, can arrange transport or delivery against payment of this service in advance. Under no circumstances will DAVID FELDMAN S.A. or the third party be liable for any damage to or loss of the items during transport or delivery.

4 Applicable law and jurisdiction

The present auction and all legal relationships arising from it shall be subject exclusively to Swiss law. Any legal action or proceedings relating to the auction and the legal relationships arising therefrom shall be subject to the exclusive jurisdiction of the courts of Geneva, subject to appeal to the Swiss Federal Court in Lausanne. In any case, DAVID FELDMAN S.A. reserves the right to sue any defaulting buyer at his/her place of residence, in which case Swiss Law remains applicable.

5 Miscellaneous

These General Terms and Conditions of Sale apply to all purchases and sales transactions with David Feldman SA with participating bidders, even outside of auctions.

These Terms and Conditions of Sale have been drawn up in French and are accompanied by an English translation. In the event of any discrepancy between the English and French versions, the French text shall prevail.

Our Offices



Please note: Due to current roadworks on the street directly in front of our building, access conditions and public transport routes may be temporarily affected. We therefore recommend consulting the official Geneva public transport website www.tpg.ch for the most up-to-date routes and travel information before your visit.



**David Feldman
International Auctioneers**

Chemin du Pavillon 2
1218 Le Grand-Saconnex
Geneva, Switzerland

Phone & WhatsApp +41 22 727 0777
Email info@davidfeldman.com

www.davidfeldman.com



Download the **SBB Mobile** app on your mobile device to help you with tickets and transport options.

Step 1. Fold along this line, from edge to edge.

Step 2. Fold along this line, from edge to edge.

From:



David Feldman SA
Chemin du Pavillon 2
1218 Le Grand-Saconnex
Geneva, Switzerland

Step 2. Fold along this line, from edge to edge.

Step 1. Fold along this line, from edge to edge.

