

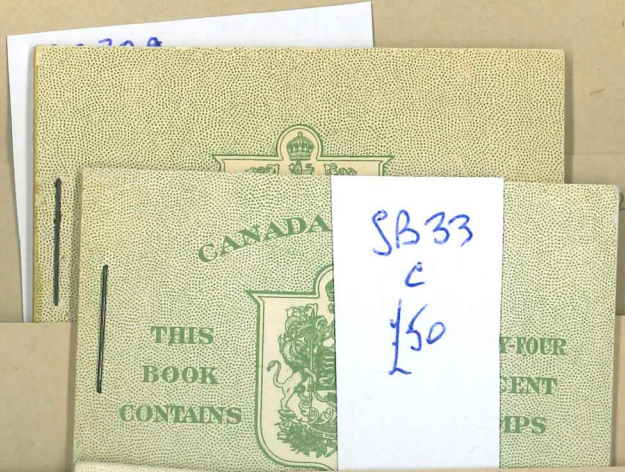
Manufactured by  
ERRINGTON & MARTIN  
SOUTH HACKNEY, LONDON, E.9,  
ENGLAND Established 1880

ERRIMAR STOCK SHEET  
REFERENCE No. 3141

SB28  
c  
185

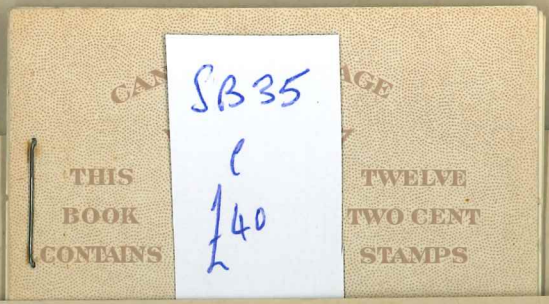


SB31B  
c  
180



SB33  
c  
150

33



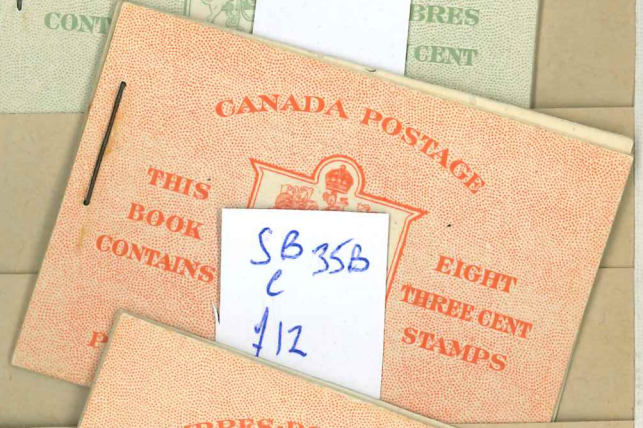
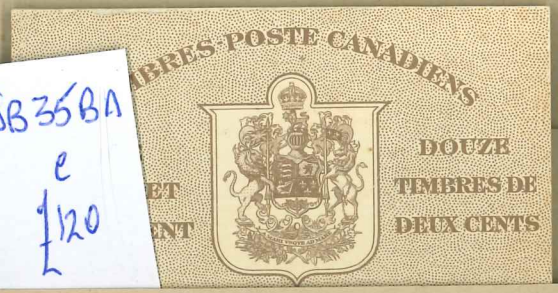
SB35  
c  
140



SB33A  
c  
150

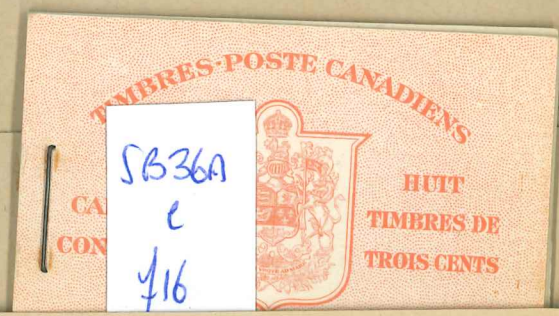
776

SB35BA  
c  
120

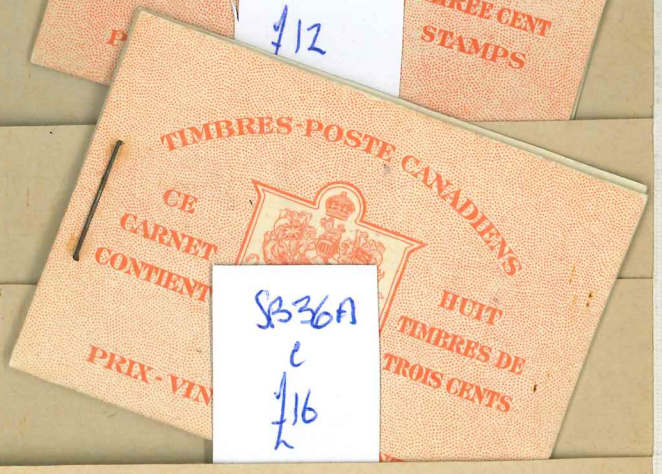


SB35B  
c  
112

36a  
(2)



SB36A  
c  
116



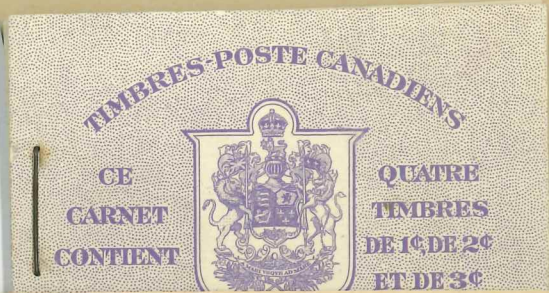
SB36A  
c  
116

37



SB37  
c  
150

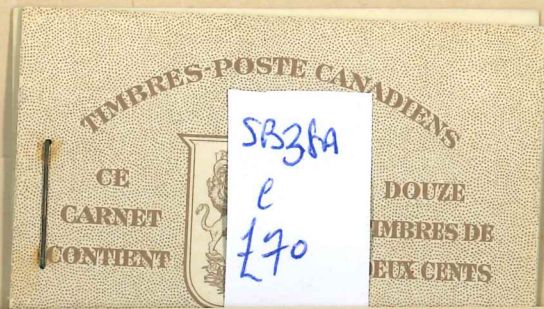
SB37A  
c  
190



38



SB38  
c  
155



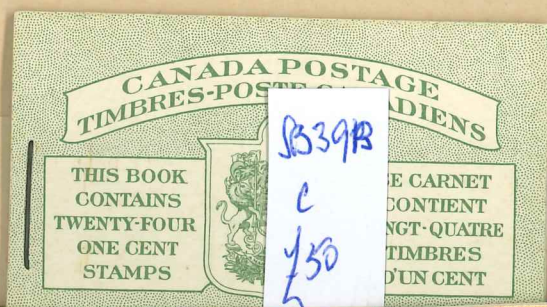
SB38A  
c  
170

38a

39



SB39  
c  
118



SB39B  
c  
150

39b

40



SB40  
c  
110



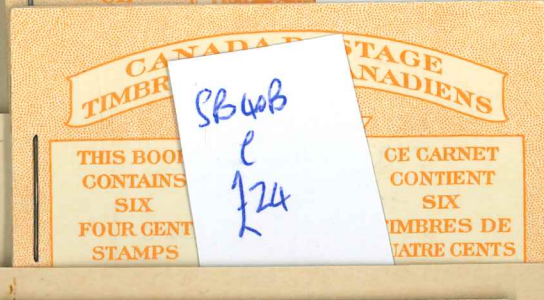
SB40A  
c  
120

40a

40b



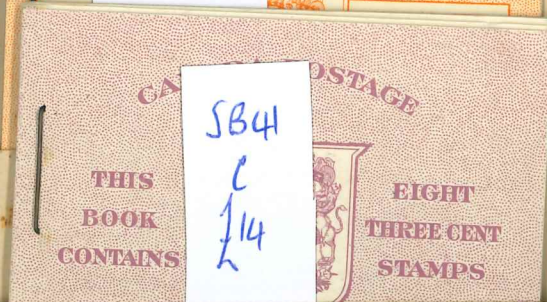
SB40B  
c  
124



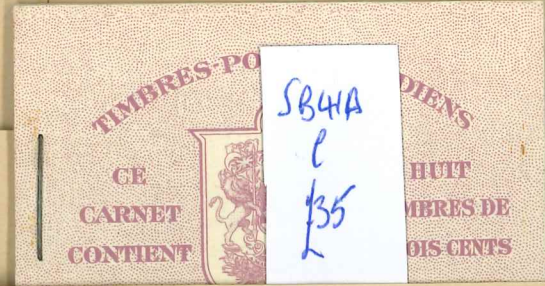
SB40B  
c  
124

40b

41



SB41  
c  
114

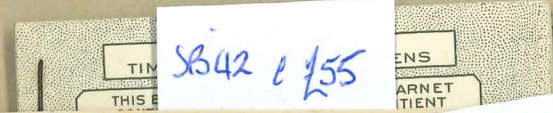
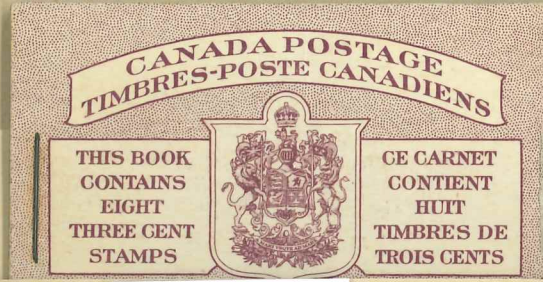


SB41A  
c  
135

41a

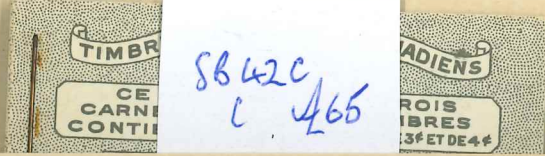
Manufactured by  
ERRINGTON & MARTIN  
SOUTH HACKNEY, LONDON, E.9.  
ENGLAND, Established 1880

ERRIMAR STOCK SHEET  
REFERENCE No. 3141

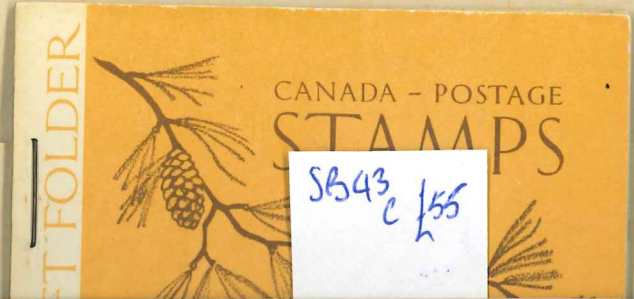


SB42 c 155

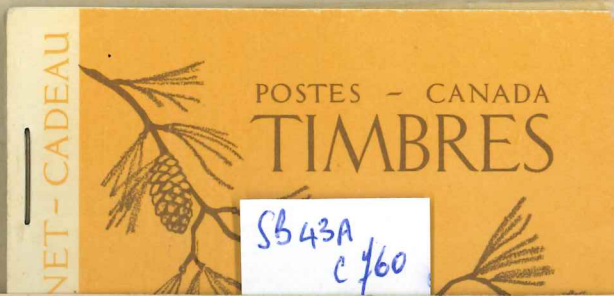
42A c 170



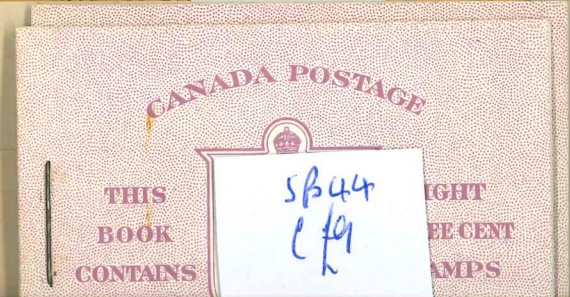
SB42C  
c 165



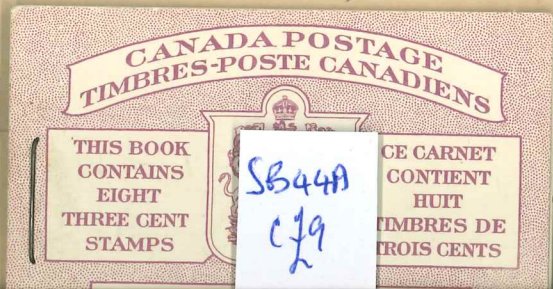
SB43  
c 155



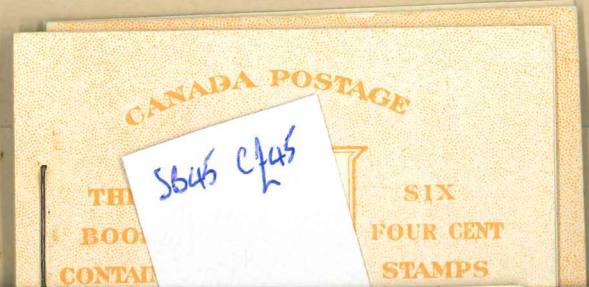
SB43A  
c 160



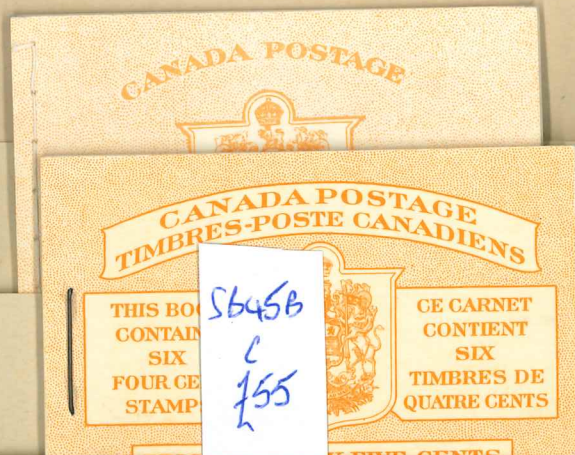
SB44  
c 151



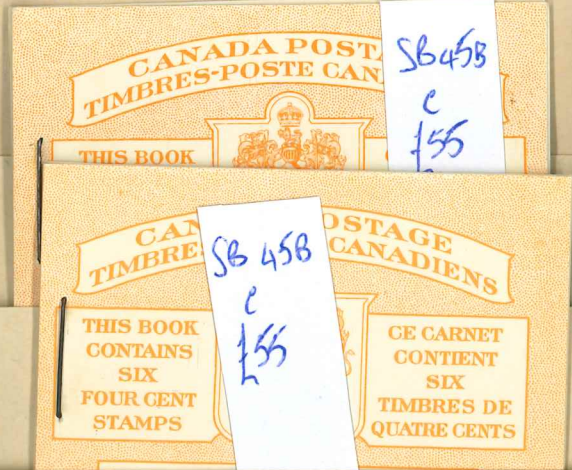
SB44A  
c 159



SB45  
c 145



SB45B  
c 155



SB45B  
c 155

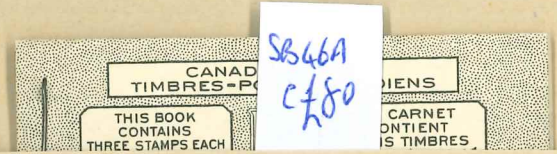
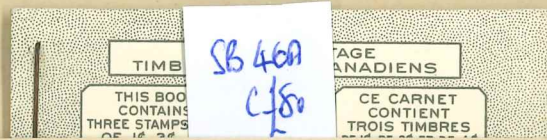
Manufactured by  
ERRINGTON & MARTIN  
SOUTH HACKNEY, LONDON, E.9.  
ENGLAND Established 1880

ERRIMAR STOCK SHEET  
REFERENCE No. 3141

46a  
(2)



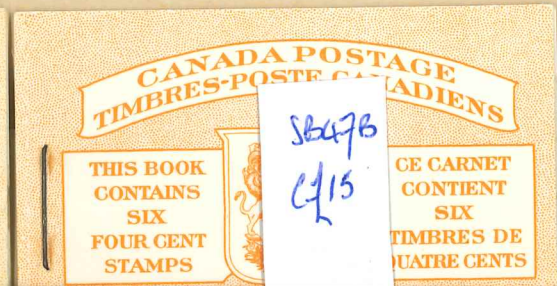
46a  
(2)



47



a



6