



SG 233  
 Sm 26e \$200  
 M. U.



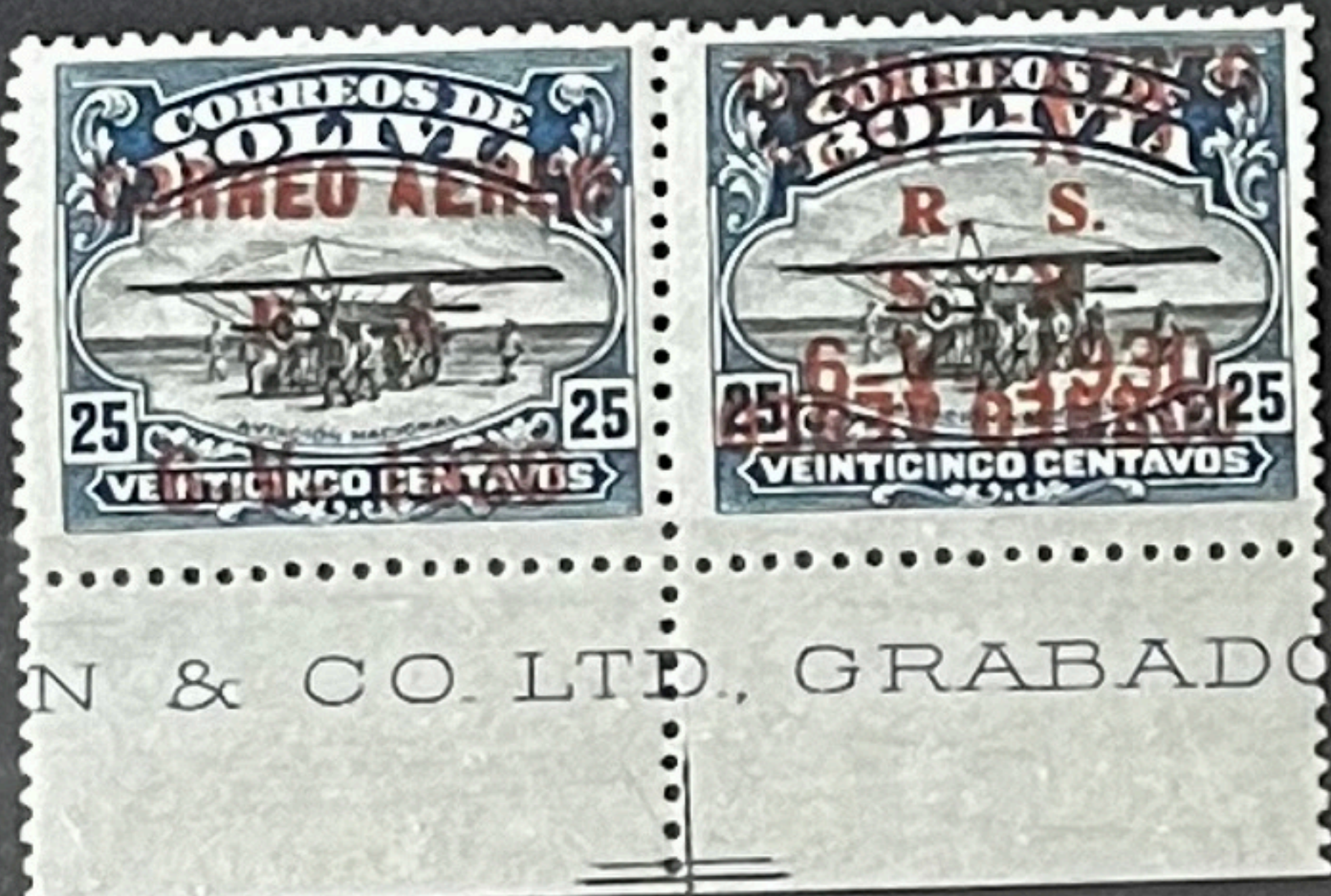
SG 232 Sc.  
 Sm 25d \$200  
 HOW WAMMICE  
 M. U. Price 35.0



SG 233  
 Sm 26a +  
 RSM  
 M. U.



SG 232 Sc.  
 Sm 25e \$200  
 HOW WAMMICE  
 M. U. Price 25.0



SG 232 Sc.  
 Sm 25 + 25c  
 M. U.



SG 228 Sc.  
 HOW WAMMICE  
 M. U. Price 30.0



SG 232 Sc.  
 Sm 26g \$200  
 BSM  
 M. U.



SG 231 Sc.  
 Sm 26f \$200 BSM WAMMICE  
 M. U. Price 30.0



SG 228 Sc.  
 SANABRIA + orig  
 M. U.



SG 229 Sc.  
 Sm 23c \$200  
 HOW WAMMICE  
 M. U. Price 25.0



SG 228 Sc.  
 Sm 22e \$200  
 M. U.



SG 229 Sc.  
 Sm 23e \$200  
 BSM WAMMICE  
 M. U. Price 30.0



SG	228a	Sc.	C11
Birman Surch			
M.	U.	Price 10.0	



SG	229a	Sc.	
Birman opt. cmr. E400			
M.	U.	Price 25.0	

SG	233a	Sc.	
Two opt. cmr. E400			
M.	U.	Price 26.0	

239 (C22) 1930 25c with air  
opt in metallic ink (copper)  
lower marginal blk x4 fine  
mint \*\* Scarce multiple 120



SG	228	Sc.	
San 22d \$100			
M.	U.	Price 25.0	



SG		Sc.	
San 22d \$100 Kessner Warrant			

\$250

DALLAS

IVY  
SHREVE  
MAYDER

NEW YORK

Philatelic Auctions, Inc.

Heritage Plaza • 100 Highland Park Village • Dallas, Texas 75205-2788 • WATSON 800/STAMPS-1 (782-6771) • In Texa



PLEASE DO NOT REMOVE FROM MOUNT

Lot  
Sa  
Co  
Ca  
Ca  
Va  
(P)

We have examined the enclosed Bolivia  
1930, 50c, black & orange, 50c, surcharge  
double, both inverted, unused, o.g.  
submitted by H. R. Harmer, Ltd.  
of which a photograph is attached and are of the opinion  
that it is genuine Sanabria 26d, with a  
horizontal crease



SG 237	Sc. c20	
Aeroneo inv. Sm 84a		
M. #	U.	Price 7.5



SG 228	Sc. c11	
Inv. Sm 22a		
M.	U.	Price 2.0



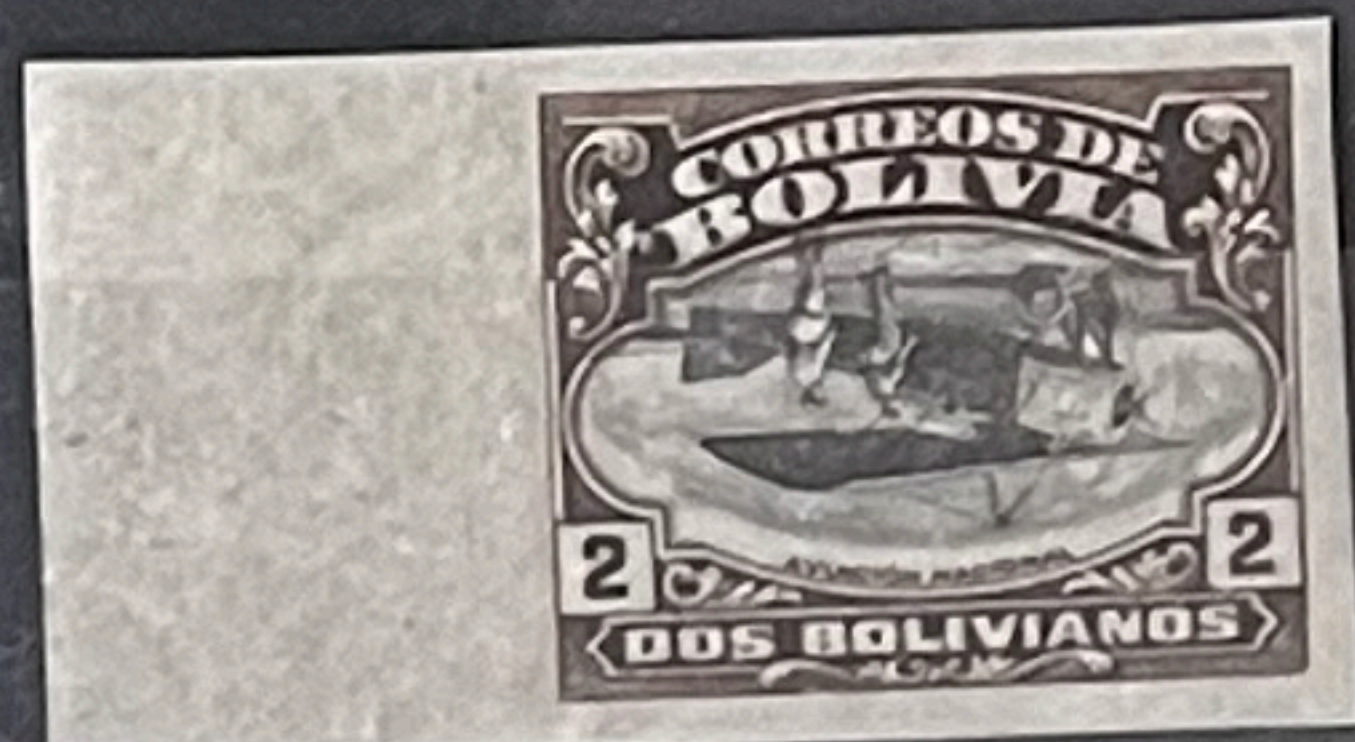
SG 238	Sc. c21	
Aeroneo inv. Sm 85a		
M. #	U.	Price 7.5

SG 239	Sc.	
Aeroneo inv.		
M. #	U.	Price

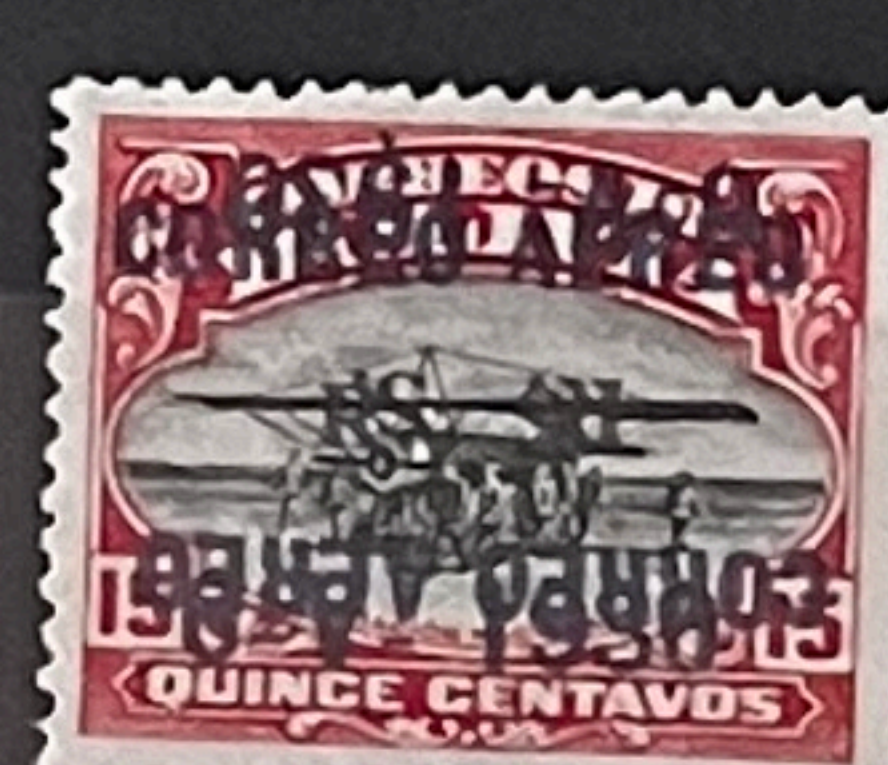


SG 229	Sc. c12	
Inv. Sm 23a		
M.	U.	Price 2.5

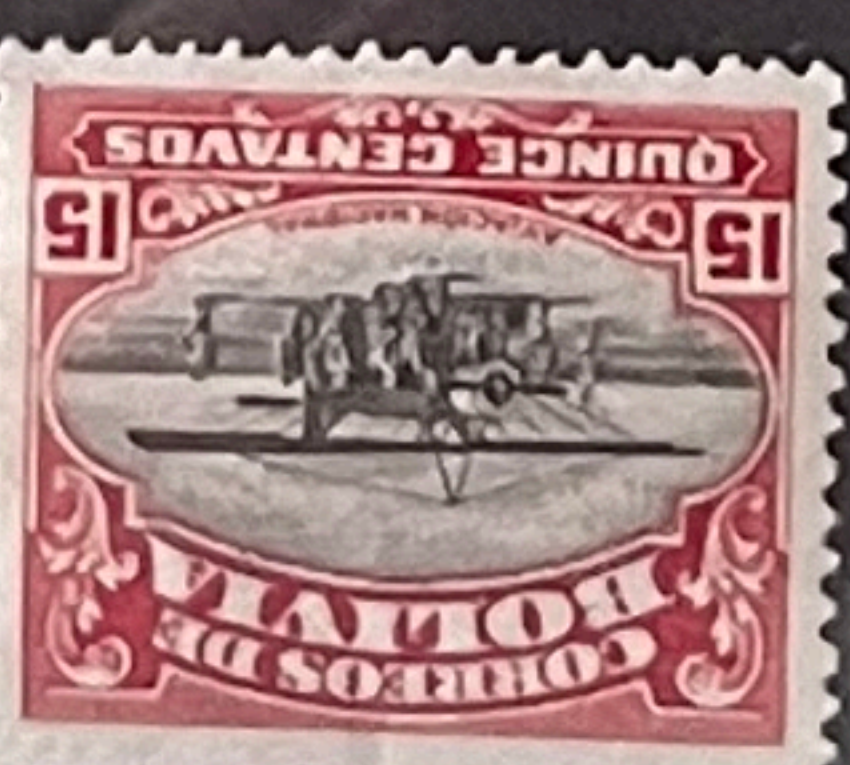
SG 233	Sc. c17	
Inv. Sm 26a		
M.	U.	Price 3.0



SG	Sc.	
Inv. Comme		
M.	U.	Price



SG 228/33	Sc.	
(5) Au Double, one inv. Sm 30		
M.	U.	Price 15.0



£  
\$

BOLIVIA

1924 National Aviation School. 5Bs. Plate proof. Block of nine with frame in unissued green. Sanabria PP10.



BOLIVIA

£  
\$



1924 National Aviation School. 25cts. Black and blue Pair. Imperforated. Unmounted mint. SG172var. Scott C3.var. Sanabria 13.

BOLIVIA

£  
\$

SG 170var  
SCOTT Clvar  
SANABRIA II

238.



1924 NATIONAL AVIATION SCHOOL. 10 centavos. Pair. Imperforated with original gum. Fine and fresh.

BOLIVIA

£  
\$

1924 National Aviation School.



10cts. Black Carmine. Pair Imperforated. Unmounted mint. SG170var. Scott Clvar. Sanabria 12.

BOLIVIA

£  
\$

1924 National Aviation School. 10cts. Pair. Imperforated. Unmounted mint but with gum bend, not noticeable on front. Fresh. SG170var. Scott Clvar. Sanabria 11.

Black + vermilion



CORREO AEREO R. S. 6-V-1930	CORREO AEREO R. S. 6-V-1930	CORREO AEREO R. S. 6-V-1930	CORREO AEREO R. S. 6-V-1930	CORREO AEREO R. S. 6-V-1930
CORREO AEREO R. S. 6-V-1930	CORREO AEREO R. S. 6-V-1930	CORREO AEREO R. S. 6-V-1930	CORREO AEREO R. S. 6-V-1930	CORREO AEREO R. S. 6-V-1930
CORREO AEREO R. S.	CORREO AEREO R. S.	CORREO AEREO R. S.	CORREO AEREO R. S.	CORREO AEREO R. S.

TO THE EDITOR, BEING THE  
 OFFICIALS AND NEARLY ALL THE  
 THE POSTMASTER GENERAL (COP)  
 1930 THE AIRMAIL AND OTHER



229a (C13) 1930 airmail opt in b pair fine mint \* multiple (Rendon)



231 (C14) 1930 15c with air opt in violet double, one invtd (San 24c) fine hinged mint. Scarce 5.0



233a (C17) 1930 50c with air opt in red fine mint \*\* Scarce 25.0



240 (C23) air opt ink invtd mint \*\*



245 (C15) 1930 25c with opt in red double (5b) fine mint \*\* 5.0



228 (C11) 1930 5c on 10c surcharge horiz pair with surcharge omit other with surcharge invtd. Fine mint \*\*



229 (C12) 1930 10c with airmail opt in blue horizontal pair, one stamp with opt invtd (San 23c) fine mint \*\* Rare



228 (C11) 1930 5c on 10c airmail surcharge double (San 22f) fine mint \*\*\* Scarce 6.0



229 (C12) 1930 10c with airmail opt in blue invtd (San 23a) fine mint \*\*



174 (C5) 1924 Aviation School 1b imperf marginal single fine mint \*\*\* 4.5



\$680

DALLAS  
READING DOWN

**IVY  
SHREVE  
MADER**  
Philatelic Auctions, Inc.

Heritage Plaza • 100 Highland Park Village • Dallas, Texas 75205-2788 • WATS: 1-800-5



PLEASE DO NOT REMOVE FROM

**F. I. C.**

**FRIEDL EXPERT COMMITTEE**

FOUNDED BY OTTO W. FRIEDL

HERBERT J. BLOCH  
EDWIN MUELLER, DECADE

10 EAST 40TH STREET  
NEW YORK, N. Y. 10016

January 25, 1984

CERTIFICATE NO. 15726

BOLIVIA Air Post 1932 "Platanillos" Provisional 30c in red on 5c green, used, pictured below, is in my opinion genuine in every respect. It is a very rare stamp of which I know of less than 10 copies. I have signed it

*Almeri*

CHERRYSTONE STAMP CENTER INC.

119 WEST 57th STREET, NEW YORK, N.Y. 10019

LOT NO.

285



CAT. NO. 47

READING WP

CAT. VAL. \$

PLEASE BE CAREFUL WHEN HANDLING STAMPS AND TURNING PAGES

OCT 29 1994 *Stampazine*

119 West 57th Street  
New York, N.Y. 10019

LOT # 4098

SCOTT NO. *b c*



CONDITION *vt*

*Impair pair tied to small piece*

*720*

CA VAL

OCT 29 1994 *Stampazine*

119 West 57th Street  
New York, N.Y. 10019

(212) 262-0100  
Fax (212) 541-7336

LOT # 4097

SCOTT NO. *C100a*



CONDITION *vt*

*Impair pair*

*820*

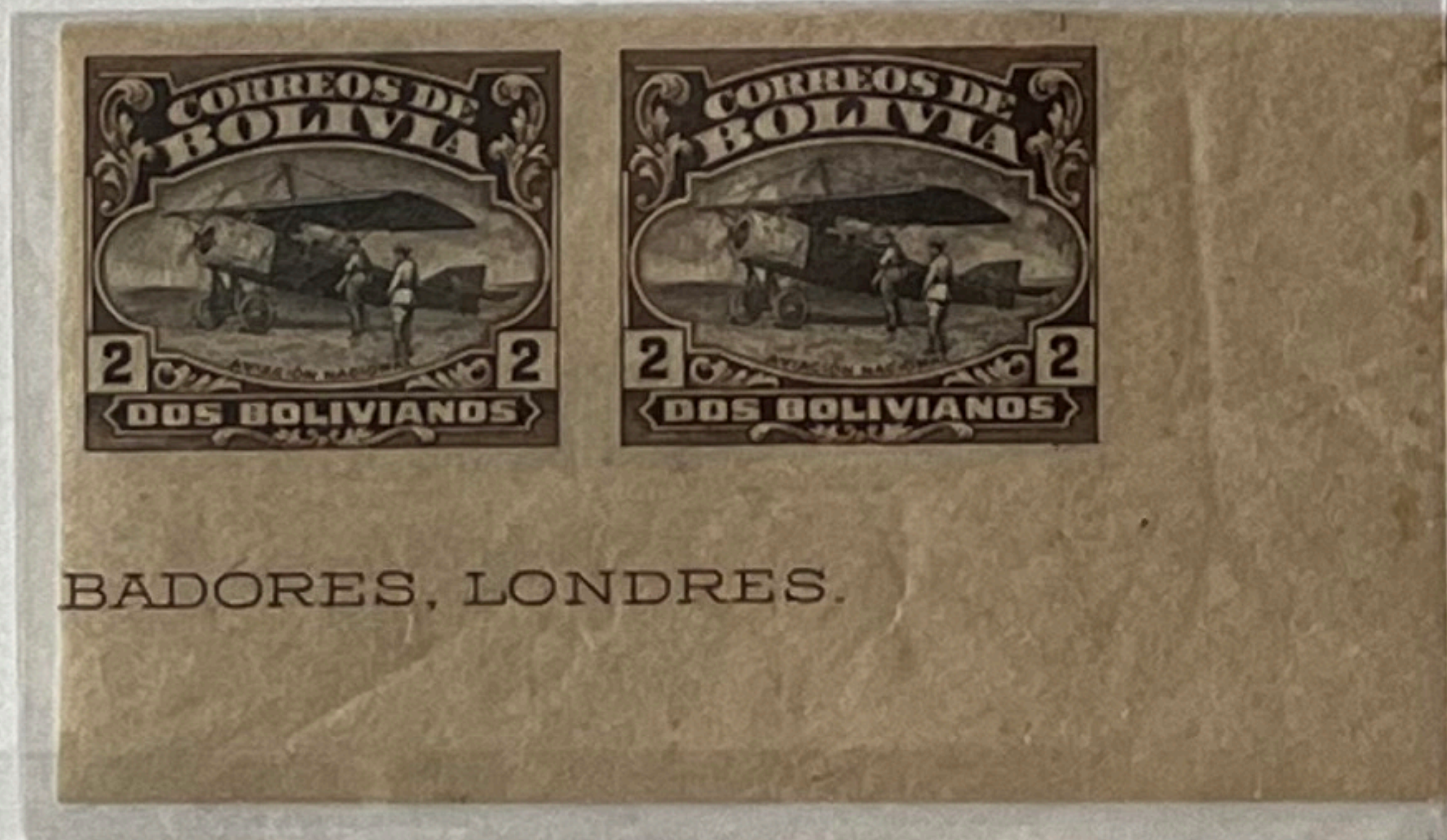
CAT. VALUE 12.50

*Signed "Sanabria"*

BOLIVIA

£  
\$

60



BADORES, LONDRES.

1924 National Aviation School. 2Bs. Corner marginal horizontal pair from lower-right of sheet. Shows partial imprint. Imperforated with original gum. SG175var. Scott C6var. Sanabria 15.

**ACHTUNG**  
Diese Karte wurde zum Schutz der Marken verschlossen.  
Das Öffnen zwingt zur Abnahme, wobei der Auktionszuschlag  
in Rechnung gestellt wird.



IMPRESIÓN ORIGINAL

1ª. TIRADA

TIRADA NO OFICIAL (FANTASIAS)

RESELLO BRONCE

C19 C22 C23

TIRADAS Ó IMPRESIONES POSTERIORES

COUNTERFEIT

R. BRONCE

FALSOS TIPO (A)

FALSOS TIPO (B)

C12 C14

C12 C14

shades of more. usually darker

shades of copper. darker. on needles

Bolivien

Dezember 1924

Gründung der Nationalen Flugschule

"MUESTRA"



# AEROPHILATELIE JOHANNES PALMER

Konstanzer Straße 7 · D - 89233 Neu Ulm  
Telefon 07 31 / 71 23 21 · Fax 71 19 73




Briefmarkenteil                      Einzellose  
Bolivien  
Datum:                                      Katalog Nr. Mi. 191  
Luftpostmarke mit Aufdruck BRAUN (nicht  
im Michel !) "CORREO AEREO..."

**6324**

Einlieferer Nr.: 404                      Einzellos



GRABADORES, LONI

Mi. Nr. 188a   
Bogenrand \*\*  
MM 140,-



CORREO AEREO  
R. S.  
6-V-1930

CORREO AEREO  
R. S.  
6-V-1930

CORREO AEREO  
R. S.  
6-V-1930

CORREO AEREO  
R. S.  
6-V-1930



1924.- SPECIMENS.

Overprinted "MUESTRA" in magenta



BOLIVIA

1924 National Aviation School. Set of seven values 10cts-5Bs with "MUESTRA" (Specimen) overprint. All with part gum. 2Bs with corner bend but in margin only. Sanabria As4-10. Ex Herschkowitz.

£  
\$

25.0

BOLIVIA 1930 : 25c black and blue with airmail opt (red) in left half sheet x25 (5 x 5) fine mint o.g. Scarce multiple (BO/2393/L)



25.0



ACON & CO. LTD.

GRABADORES, LONDRES.



GRABADORES, LONDRES.

BOLIVIA 1930 : 15c black and lake with airmail opt (violet) in right half sheet x25 (5 x 5) fine mint o.g. Scarce multiple (BO/2394/L)

25.0

BOLIVIA 1930 : 10c black and orange-red with airmail opt (blue) in right half sheet x25 (5 x 5) fine mint o.g. Scarce multiple (BO/2366/L)



25.0



PERKINS, BACON & CO LTD

BOLIVIA 1930 : 5c on 10c black and orange-red airmail surcharge (green) in left half sheet x25 (5 x 5) fine mint o.g. Scarce multiple (BO/2367/L)



SG	Sc.
SM 82 5c on 35c Inv. Brazil	
M. *	U.
Price 5.0	



SG	319	Sc.	c61
Inv. Mus. San Pa			
M. *	U.	Price 3.0	



SG	326	Sc.	c
SM 80a			
M. *	U.	Price 3.0	



SG	320	Sc.	c62
SM 83. Rura dt			
M.	U.	Price 3.0	

SG	243a	Sc.	
Inv. P. P. '65. 6.-' only from top of sheet			
M. *	U.	Price 10.0	



320 (C62) 1937 10b on 5b  
sepia air surcharge in  
black (San 83) f.u. 3.0



320 (C62) 1937 10b on 5b  
sepia air surcharge in  
black (San 83) fine mint  
\*\*\* 3.0



320 (C62) 1937 10b on  
5b sepia air surcharge  
invtd fine mint \*\*  
3.0



SG	Sc.
Inv. P. P. 1937	
M.	U.
Price 15.0	



326 (C57a) 1937 12b on  
10c black and red air  
surcharge invtd fine  
mint \*\* 3.0

1990

Fr. 5' 885

8 47

8

OCT 29 1994 *Stampazine*

119 West 57th Street  
New York, N.Y. 10019

(212) 262-0100  
Fax (212) 541-7336

LOT # 4099

SCOTT NO. *C101a*



<sup>KF</sup>  
CONDITION

*Impul pair*  
*signal "Sanabria"*

CAT. VALUE 20.00