

UNIVERSAL PHILATELIC AUCTIONS

CODE: P LOTNO:

351,588 9456



UNIVERSAL PHILATELIC AUCTIONS

CODE: LOTNO:

1102190 14911





UNIVERSAL PHILATELIC AUCTION

CODE : LOTNO :

908142 2P52



Send Back

CODE: (P)

LOTNO:

460,028

9419

HONG KONG
SG SI MINT
2C RED



CODE:

LOTNO:

909,306

4303

1886-90
SG 20-25







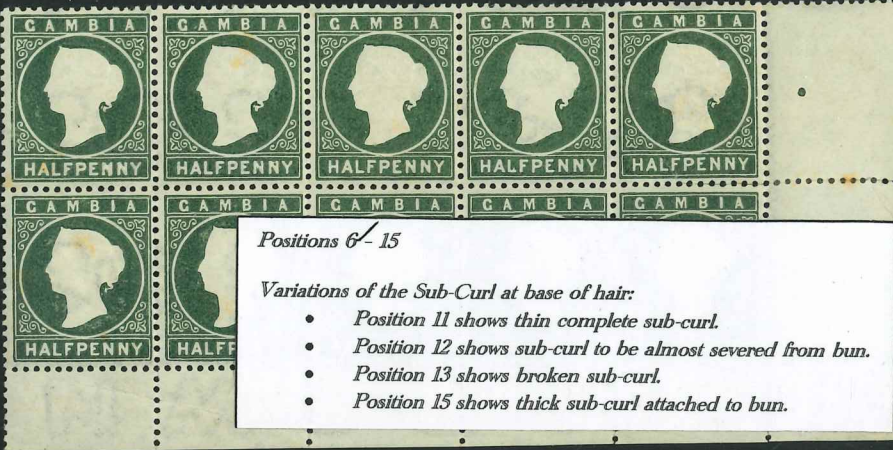






Pos
6





Positions 6-15

Variations of the Sub-Curl at base of hair:

- Position 11 shows thin complete sub-curl.
- Position 12 shows sub-curl to be almost severed from bun.
- Position 13 shows broken sub-curl.
- Position 15 shows thick sub-curl attached to bun.

6/7
11/12



4/5



2/3
7/8

1



2



3



4



5



6



b? 14
Damage to
bottom value
tablet from
line



7



March
1867 printing
"Small dot"



8



Dot above 'i'
→ (DOT in line)
No dot above
's'
(No dot in line)



9



10



flaw repaired!
1897 printing?



11



12

13



14

15



EXAMILES
OF "BLOED
NOSE" →



11



12



9/10



13



BAHAMAS

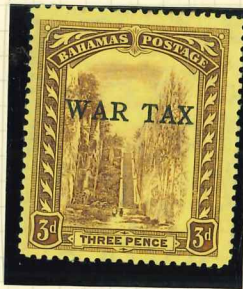
1917

Overprinted



1918

Overprinted



BAHAMAS

1918
Overprinted



1919
Overprinted



73

BAHAMAS

1919

Optd.





VARIETIES OF THE KGV DEFINITIVES

Varieties of the 1/2d



Paper: De La Rue
Issued: 30-07-1915
Perf: 14 x 15
Wmk: W7



Paper: Jones paper
Issued: 10-1924
Perf: 14 x 15
Wmk: W7



Paper:
Issued: 04-1925
Perf: 14 x 15
Wmk: unwatermarked,
lithographed blue W7



Paper:
Issued: 04-1925
Perf: 14 x 15
Wmk: unwatermarked,
lithographed yellow W7



Paper: Cowan reversed paper
Issued: 1926
Perf: 14 x 15
Wmk: W7 (reversed)



Paper: Cowan paper
Issued: 08-1925
Perf: 14 x 15
Wmk: W7



P14
C









1949



335-8
um



337-1
um



um



339-52



m



353-7





1961
373-88
um



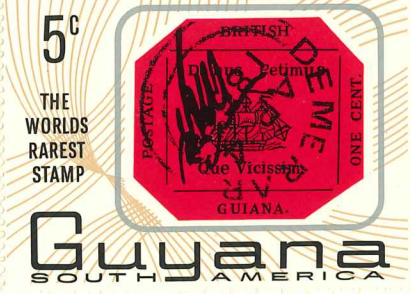
1963
390-3
m

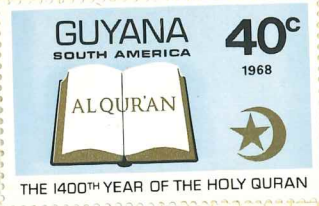
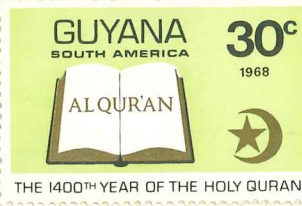
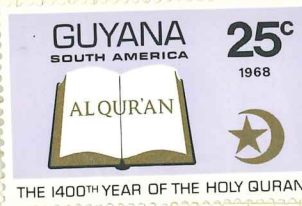
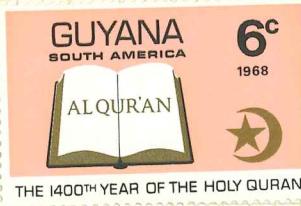
Ind. 1963. Part of Tanzania 1964



DE LA RUE









6

10



19

1953.
SG 144-5.



1953.
SG 146-8.

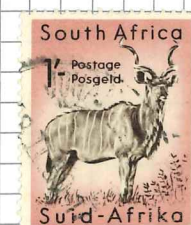
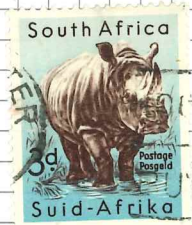


1954.
SG 149-50.



1954
SG 151-64.

Wmk SPRINGBOK HEAD.



ulm

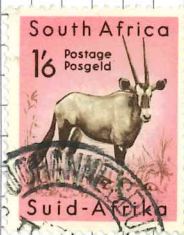


144A

146A

very foul! n/c





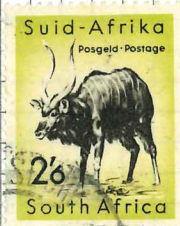
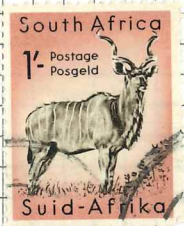
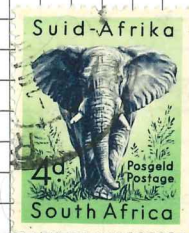
1955
SB 165-6



1955
SG 167



1959-60 WMK UNION COAT OF ARMS.
SG 170-77.



1958
SG 168



1959
SG 169



1959
SG 178



1960
SG 179-82



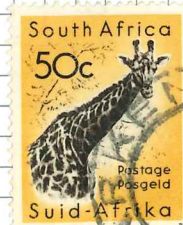
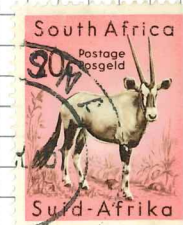
1960
SG 183



1960
SG 184



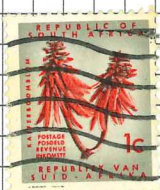
1961
SG 185-97



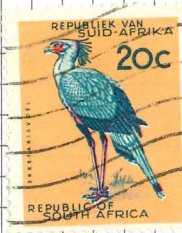
1961-63 WMK UNION COAT OF ARMS.
SG 198-210.



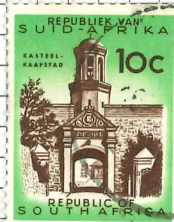
1961-63 WITHOUT WMK.
SG 211-19.



1961-63 CONT
SG 211-19.



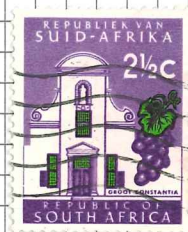
1963-67. WMK RSA IN TRIANGLE.
SG 227-36



1964-72 DESIGNS REDRAWN. WMK RSA IN TRIANGLE.
SG 238-51



1964-72 CONT.
SG 238-51



1961.
SG 220



1962.
SG 221.



1962.
SG 222-3



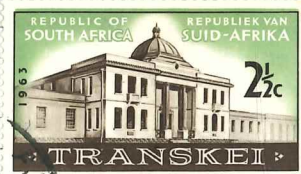
1963.
SG 224.



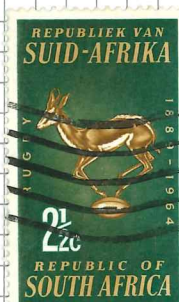
1963.
SG 225-6.



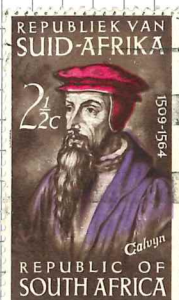
1963.
SG 237.



1964.
SG 252-3



1964
SG 254



1964.
SG 255-7



1965
SG 258-9



1965
SG 260-1



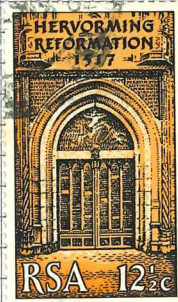
1966
SG 262-5



1966
SG 266-8



1967
SG 269-70



1968
SG 271-2



1968
SG 273-5

1969
SG 276-7



1969
SG 278-9.



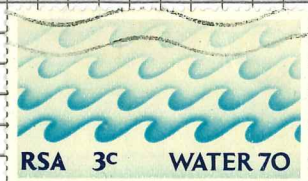
1969
SG 280-1.



1969
SG 297-8.



1970
SG 299-300.



1970
SG 301-2.



100

CAT £1-00

1-00



1-00



1-00

1-00



1-00

1-00



1-00

1-00



16-00



1-00

C. 2-75



NEW COLOURS PERF 11

C-275



C. 2-75



C-2-75



C-2-75



↓
CAT 4.50 OR 75.00?

PERF 11x12



P.11. C. 8.00



C. 3.75



C. 3.75



C. 3.75



C. 8.00



C. 8.00



C. 8.00



C. 75P.



PERF II



C. 20.00

PERF IIx12



c. 1-50



c. 1-50



c. 1-50



c. 4-75



c. 4-75



c. 4-75



P. 10XII.

VALUES PRINTED IN WRONG COLOUR

c. 1-50



c. 1-50



c. 1-50



c. 2-00



NEW COLOURS PER P II

c. 2-00



c. 2-00



c. 2-00



c. 2-00



c. 2-00







Chalky paper



Chalky paper





ISSUE 8.

JUNE, 1872.

ST. VINCENT.

Watermarked. Small star sideways.

SG 17. 1st rose-red, Perf B, 11-13.

PML page 40.

SG 17.



ST. VINCENT.

ISSUE 9.

NOVEMBER, 1872.

SG 18.

Watermark. Small star.

1d black. Perf G. 15x15.

P.M.L. page 41.

SG 18



No gum. MH £5
12.4.05. 25157.

SG 18.



MH. 263.81 Wmk s/ways - second printing.
£10 Kingstown. (full upright/abbreviated)
AP 22 76.

SG 18



Cut throat.
MH £18.
12.4.05. 21100

SG 18.



Wmk. Small star upright - first printing.

ex-Messenger (P.M.L. Plate 1 (colour).)
Bought by Michael Herdman 2 Feb 1984 £35.

SG 18.



Upright star wmk.
MH. 22.1.2000 ~~£18~~
Lot 493. £18

SG 18.



SG 18



Without gum

The gift of David Mantag, Encinas, S. Cal
August 1957

ST. VINCENT.

ISSUE 10.

AUGUST, 1873.

Pr 12 p 42.

SG 19.

Watermark. Small star.
(normally sideways).

6d dull blue-green, shades, Perf C-15x15.

Watermark. Small Star.

SG 20

(Sideways).

1/- lilac-rose. Perf B. 11-13 x C. 15x15.

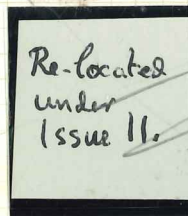
(a) Perf B 11-13?



SG 19.



SG 19b



Bought MH 9.6.00
"Very fine" £20.

ex-Messenger.
used as an illustration on page 42
of P.M.L.
Printer's guide-line, top left corner, identifies
as being from Sheet Position N°6.
MA.10.3.83 £50



SG 19b



"CR" DE 25 76

Bought MH
17 Dec 2006 £18
Stock N°6903
For Invoice SEE SG 12,
Stock N°7636.

SG 20. see next page.