



243a



254b

SCARCE
UPRIGHT with
upn. couple creas.
£35



231b



233b



242a



236a



238a

219a

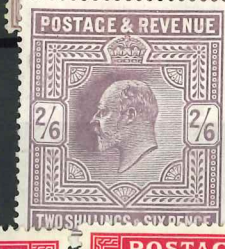
10902-10



249a



255



261/262

251a



253/4

1910



274

Harrison P15x14 ion P14

1911



1911-13



307



295-300 (check)



2548

3638



310



311

309



310



1912-24



278

1911-12



321-6



333

327-333

1912



Booklet

334-7



338-343



A. 11

328

344-5



346-350



check



307-8

1912-24



1/2-1 1/2 inv w/m



364a

1913



401



21

3914a



392b



393a



402



1018-10



1024-26



1924-25



1929



1934-36



1934



1935



1903-04



1936



CANDLISH £395 10/18
 RARE
 P/P perf
 SUPERB U/M
 cat £400

1914-23



1920-32



1936-37



X
35



15

Y
36



11

A
36



4

A
36



12.



K 29

L 29



L 29



M 30

J 28

K 29



1896-1901



0170



1901



1882-1901



05

1896



017

018



1902



2/100

1901-1902



1853-57



1860-67



1867-81



1903-04



6594



INTERMEDIATE
 PORTAT
 cat 2203



Cable
 via **IMPERIAL**
 to
 CANADA
 AUSTRALIA
 NEW ZEALAND
 AIR MAILS
 enquire
 at any
 HEAD P.O.



The New Label
 ATLANTIC TRANSPORT
 CO., LTD.
 38 Leadenhall St.
 London, E.C.3
 For full particulars of
 SS. MINNEKAIDA
 and
 SS. MINNESOTA
 VIRGINIA
 CIGARETTES
 5/- per 100.
 Ask Tobaccoists
 or send 1/3 for 25.
DESTI LTD.
 QUADRANT ARCHWAY,
 REGENT STREET, W.1.