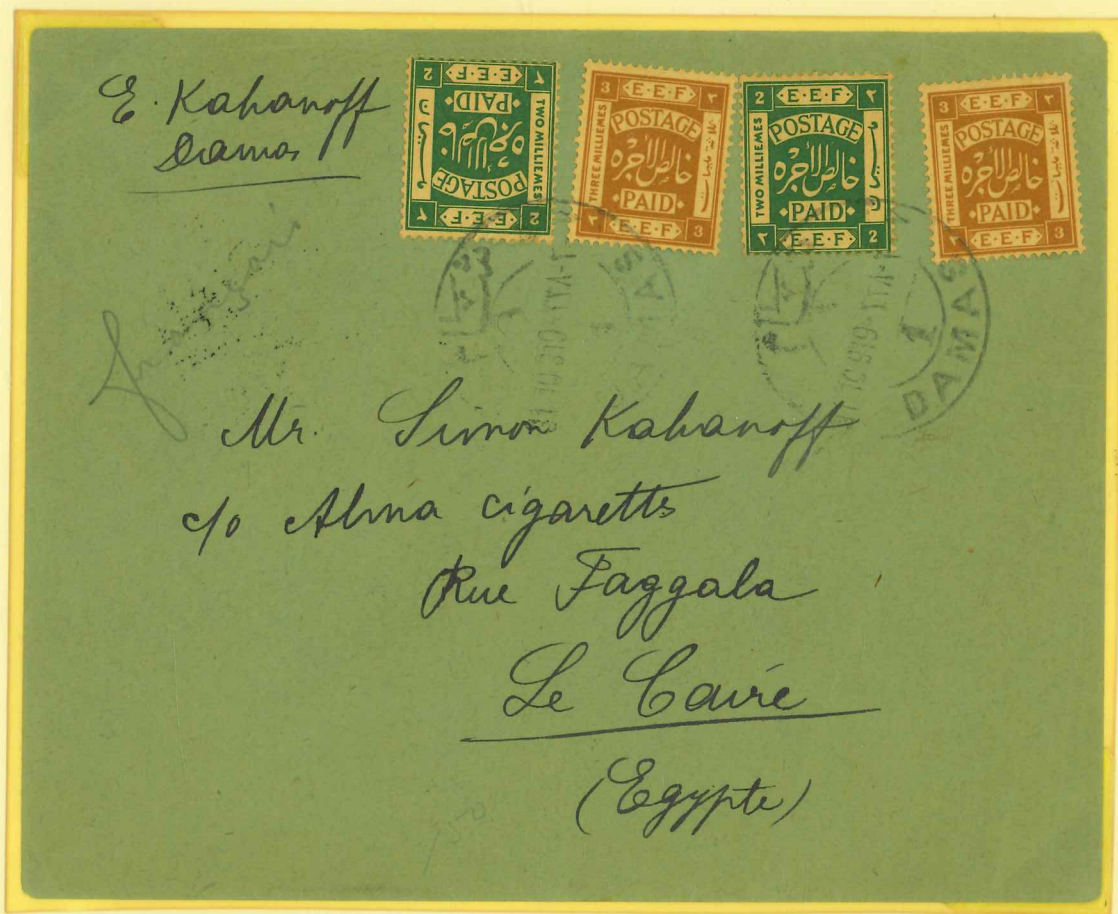


1-E.E.F stamps and Arab kingdom

1.1-E.E.F stamps period from 1918-1922

The Ottoman administration abandoned Damascus on October 1st and Aleppo on October 25th. The E.E.F forces reached Jerablus, a Syrian town on the Euphrates at the modern Turkish frontier. During the third week of November 1918 E.E.F stamps became available in Syria and were used in all E.E.F post offices in Grand Syria from Nov 1918 to February 1922.



A mailed letter in October 1919 from Damascus to Cairo franked by two 3 mills and two 2 mills E.E.F stamps which reflects the correct postage rate at the time.

1-E.E.F stamps and Arab kingdom

1.1-E.E.F stamps period from 1918-1922

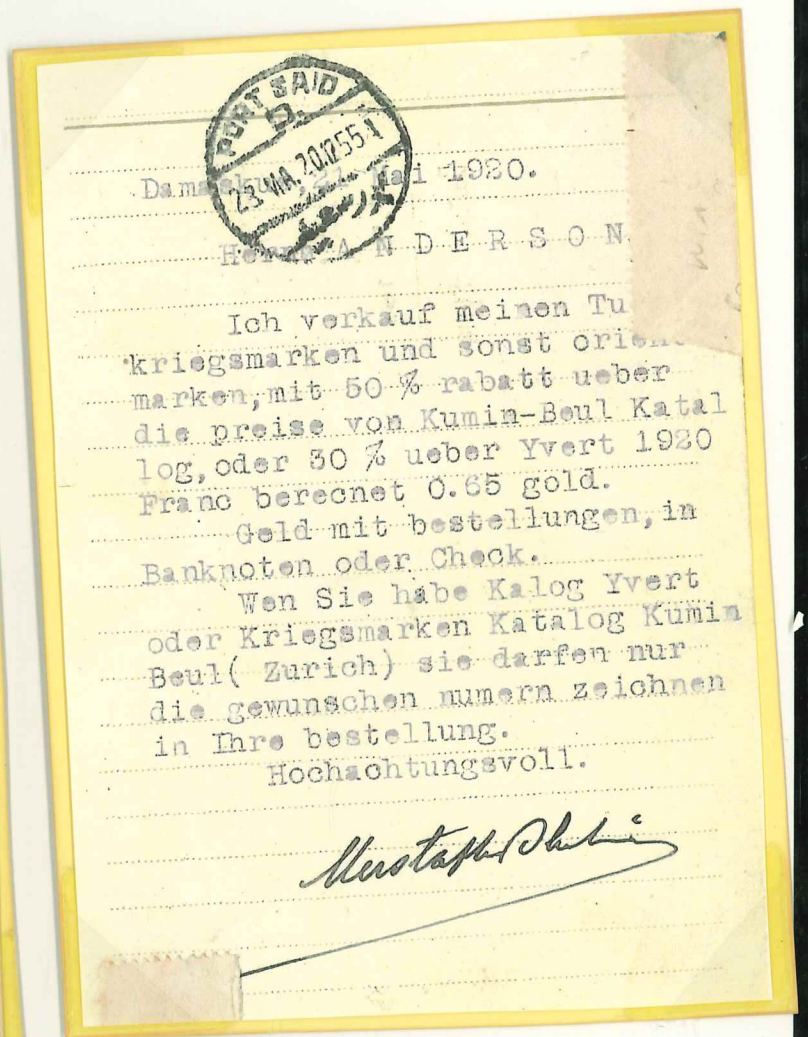


A mailed letter in June 1919 from Aleppo to Ohio USA, franked by two 3 mills and one 4 mills E.E.F stamps tied by the Aleppo (Halep) military censor on the back side.

1-E.E.F stamps and Arab kingdom

1.2-Arab kingdom 1920-1921

All mails from Syria to outside the original O.E.T.A area till the end of May 1920 required to be franked by 6ml for post cards and 13ml for letters

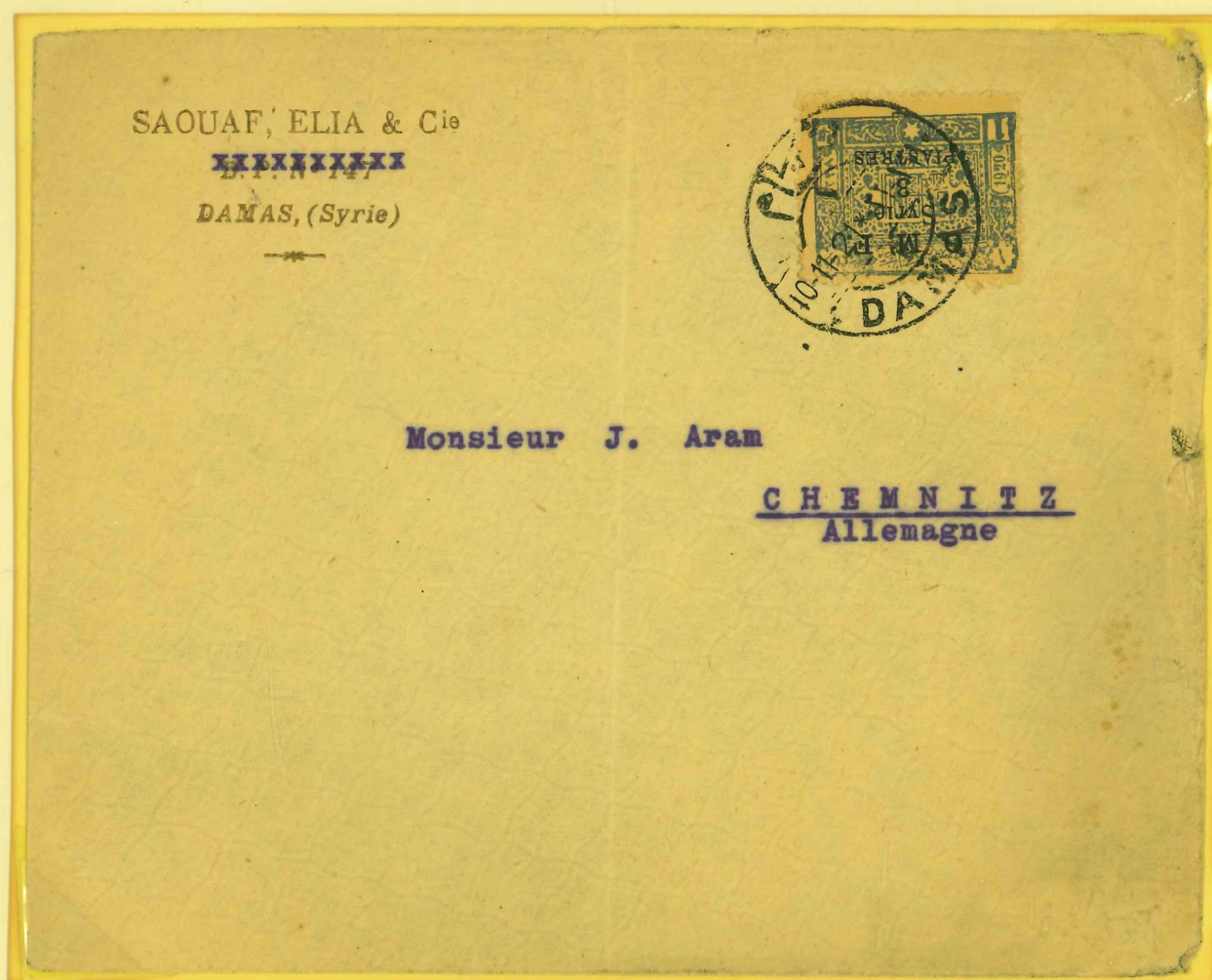


A mailed universal postal union post card from Damascus to Sweden franked by Arab kingdom 5ml stamp and 5 Para Fiscal ottoman stamp surcharged with 1ml and triangle seal of Syrian Arab Government, with Port Said cancel on the back side.

1-E.E.F stamps and Arab kingdom

1.3-Arab kingdom surcharged OMF -1921

After the French troops entered Damascus on 20th July 1920 , the French authorities surcharged the Arab Kingdome stamps with OMF (Occupation Militaire Franaise) and with new currency and new values as Piastre and Milliemes. Each Piastre equals 10 Milliemes and each Syrian Pound equals 100 Piastres.



The new rate for ordinary letter to Europe was 3 Piastres, as shown on the above mailed letter from Damascus to Germany in November 1921

2-Syria under French mandate

2.4-French stamps surcharged Syria 1924 - 1925

From 1st January 1924 separate issues of stamps were made for Syria and others for Grand Lebanon.



The Bilingual T cancel was applied on the above letter to remind the French postal authorities that the mailed letter from Yabroud town of Syria with 2 Piastres stamps only does not reflect the correct postal rate of 3 Piastres. Therefore three 25 Centimes French stamps were applied in Paris instead.

2-Syria under French mandate

2.1-French stamps surcharged TEO 1919

Before entering Damascus in July 1920, the French troops occupied the coastal line of Syria in 1919 and issued in Beirut, stamps of France overprinted T.E.O (Territories Ennemis Occupes). These were issued to coincide with the arrival of the French High Commissioner for Syria Gen. Gouraud, and are sometimes called the **Gouraud** issue.



A registered letter from Beirut to Alexandrite Egypt, franked by five stamps for the total correct value of 9 Piastres (8 Piastres and 10 Milliemmes)

2-Syria under French mandate

2.2-French stamps surcharged OMF 1920 - 1922



In February 1920 the French changed the overprint from **T.E.O** to **O.M.F** (Occupation Militaire Française) as shown on the above postal stationery card sent by ordinary mail from Beirut to Damascus surcharged with 1 Piastre, which was the postal rate for internal mail

2-Syria under French mandate

2.2-French stamps surcharged OMF 1920-1922



A registered cover from Beyrouth Syria to Alexandria Egypt mailed on 20th of April 1920, and arrived in Alexandria on the 26th of April. The charges of 3 Piastres and 2 Milliemes reflects the correct registration charges from Beyrouth to Alexandria at that time.

2-Syria under French mandate

2.2-French stamps surcharged OMF 1920 - 1922



The O.M.F overprint on French stamps remained in Usage till September 1923. The rate for ordinary letter from Syria to U.S.A was 3 Piaster, which is the frank on the above letter that was sent in November 1921 from Aleppo to Boston, USA.

2-Syria under French mandate

2.2-French stamps surcharged OMF 1920 - 1922

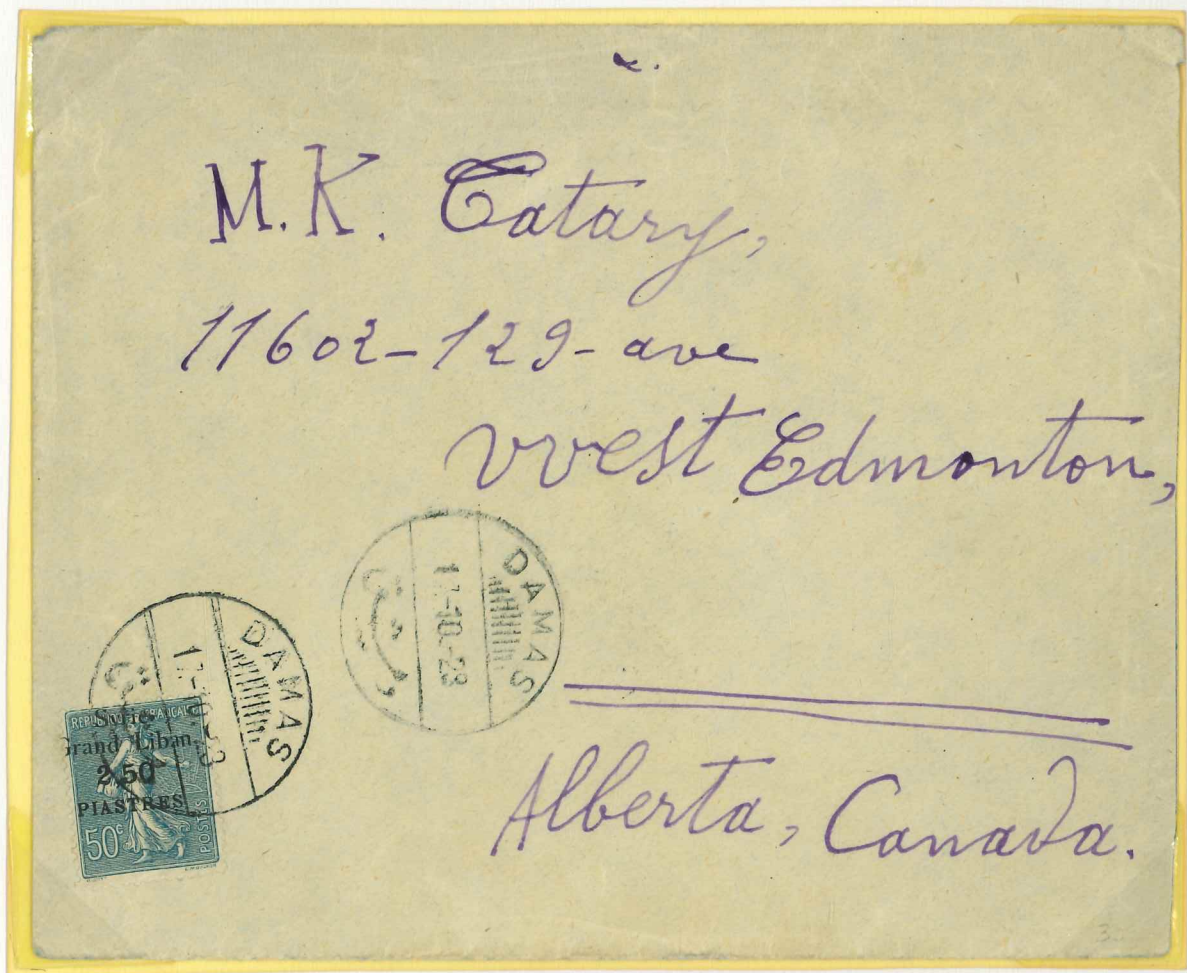


While the franking rate for Postal card between the internal cities of Syria was one Piaster as shown on page number 7, the rate for ordinary letters was 2 Piastres as shown on the above mail from Homs to Beirut.

2-Syria under French mandate

2.3-French stamps surcharged Syria & Grand Liban 1922 - 1923

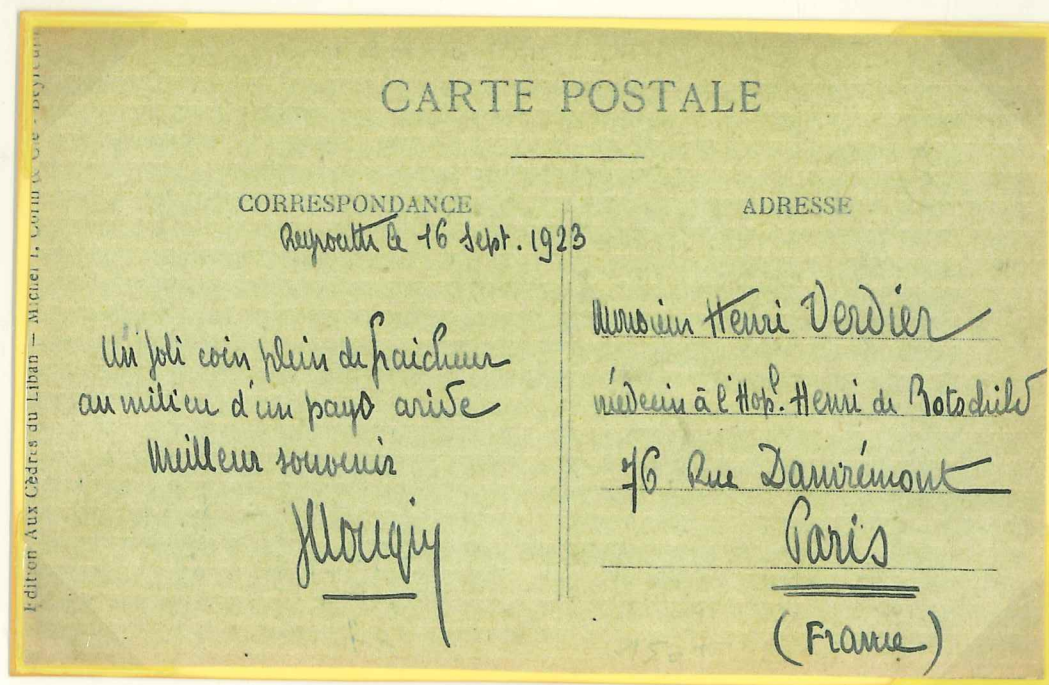
The League of Nations approved the French Mandate on 24th July 1922 and became effective in September 1923, where the O.M.F overprint were replaced by **Syrie and Grand Liban**.



An ordinary mail from Damascus to Canada on 12 October 1923 franked by the overprint 2.5 Piaster Syrie and Grand Liban on French stamp 50C

2-Syria under French mandate

2.3-French stamps surcharged Syria & Grand Liban 1922 - 1923



A mailed Post card from Damascus to Paris on 16th September 1923 franked by the overprint 1 piastre Syrie and Grand Liban on the French 20c stamp.

2-Syria under French mandate

2.4-French stamps surcharged Syria 1924 - 1925



A mailed letter in April 1924 from Alexandrette -which remained a Syrian city till 1939 before given to Turkey- to Boston USA franked by the correct value of 3 Piastres.

2-Syria under French mandate

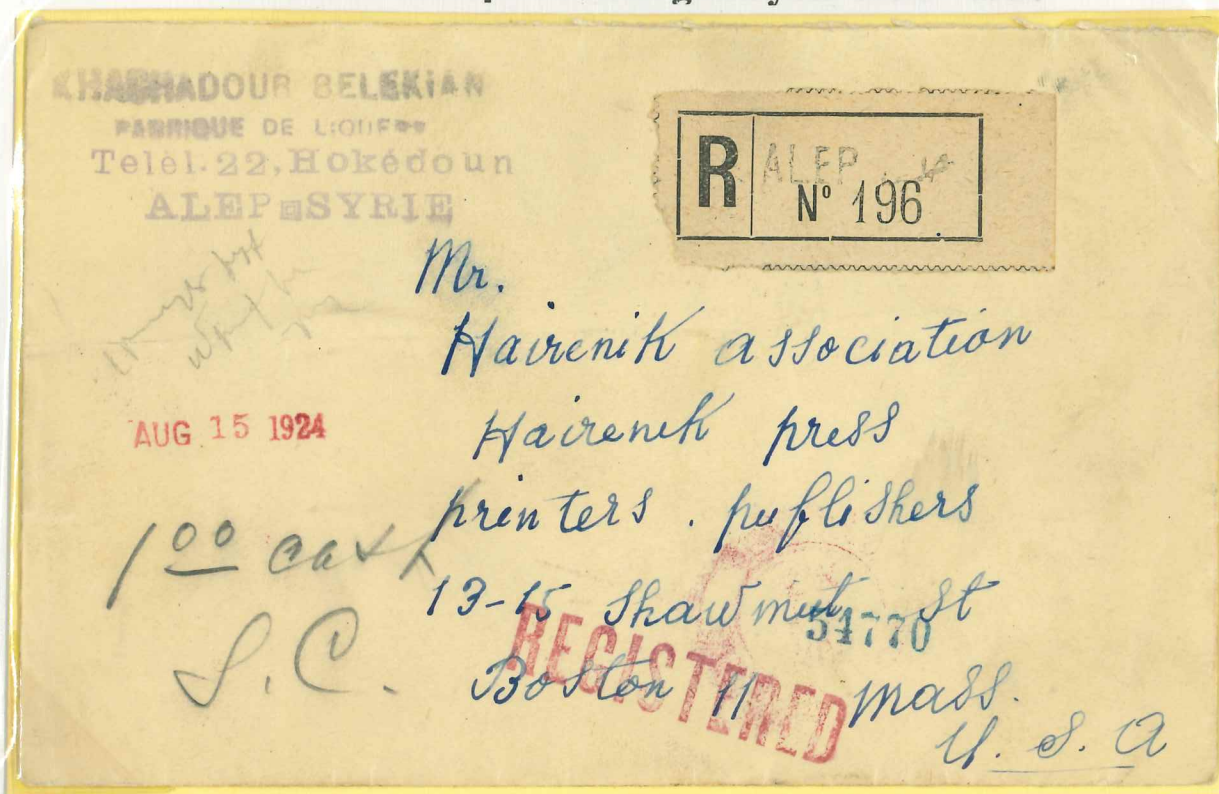
2.4-French stamps surcharged Syria 1924 - 1925



A mailed letter in August 1924 from Damascus to France franked with 50 Centiemes which is half Piastre only, but carry the Red Cross Express letter cancel from Geneve which apparently allow special lower postal mail rates

2-Syria under French mandate

2.4-French stamps surcharged Syria 1924 - 1925

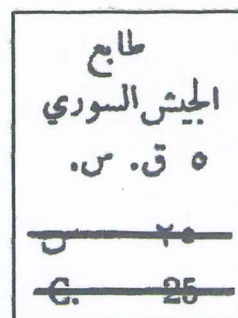


A registered letter on 15th August 1924 from Aleppo to Boston USA franked by the correct value of 5 Piastres , with Aleppo, Boston, and New York cancels on the back side.

1.1 Deep Rose Stamp with Type I Overprint



40 C Fiscal Stamp showing a peasant women at harvest available in many shades of pink and salmon with Type I Overprint. This stamp is listed in the International catalogs under the following numbers. In SG T421, in MI Z1 & in YV 293.



Type I Overprint

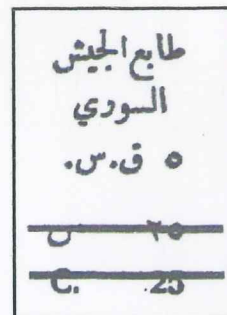


A controlled letter sent from Damascus, Syria in 1945 to New York, USA with French censor mark bearing a Fiscal stamp with Type I Overprint.

1.2 Deep Rose Stamp with Type II Overprint



40 C Fiscal Stamp showing a peasant women at harvest available in many shades of pink and salmon with Type II Overprint. This stamp is listed in the International catalogs under the following numbers. In SG T419, in MI Z2 & in YV 294.




Type II Overprint

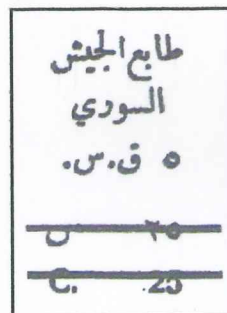


A controlled registered letter from Aleppo, Syria with French censor mark sent in 1945 to Algeria bearing a Fiscal stamp with Type II Overprint.

1.3 Deep Rose Stamp with Type II Overprint +



40 C Fiscal Stamp showing a peasant women at harvest available in many shades of pink and salmon with Type II Overprint +  . This stamp is listed in the International catalogs under the following numbers. In SG T420, in MI Z1A & in YV 294a.



Type II Overprint

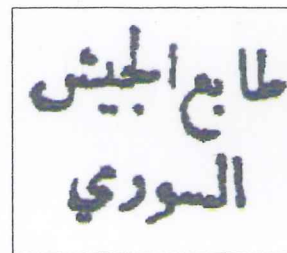


A controlled registered letter from Damascus, Syria with British censor mark sent in 1945 to Jerusalem bearing a Fiscal stamp with Type II Overprint +  .

2.1 Blue Stamp with Type III Overprint Alone in Red



A 5 Piaster Fiscal Stamp available in many shades of blue showing Aleppo Citadel Entrance with Type III Overprint alone in red. This stamp is listed in the International catalogs under the following numbers. In SG T423, in MI Z3 & in YV 296.



Type III Overprint

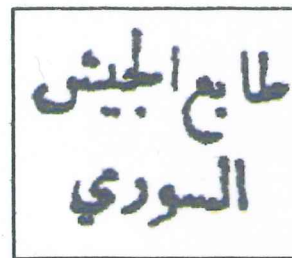


A registered letter from Damascus to Alexandria in Egypt having an Egyptian censor mark sent in 1945 bearing a Fiscal stamp with Type III Overprint.

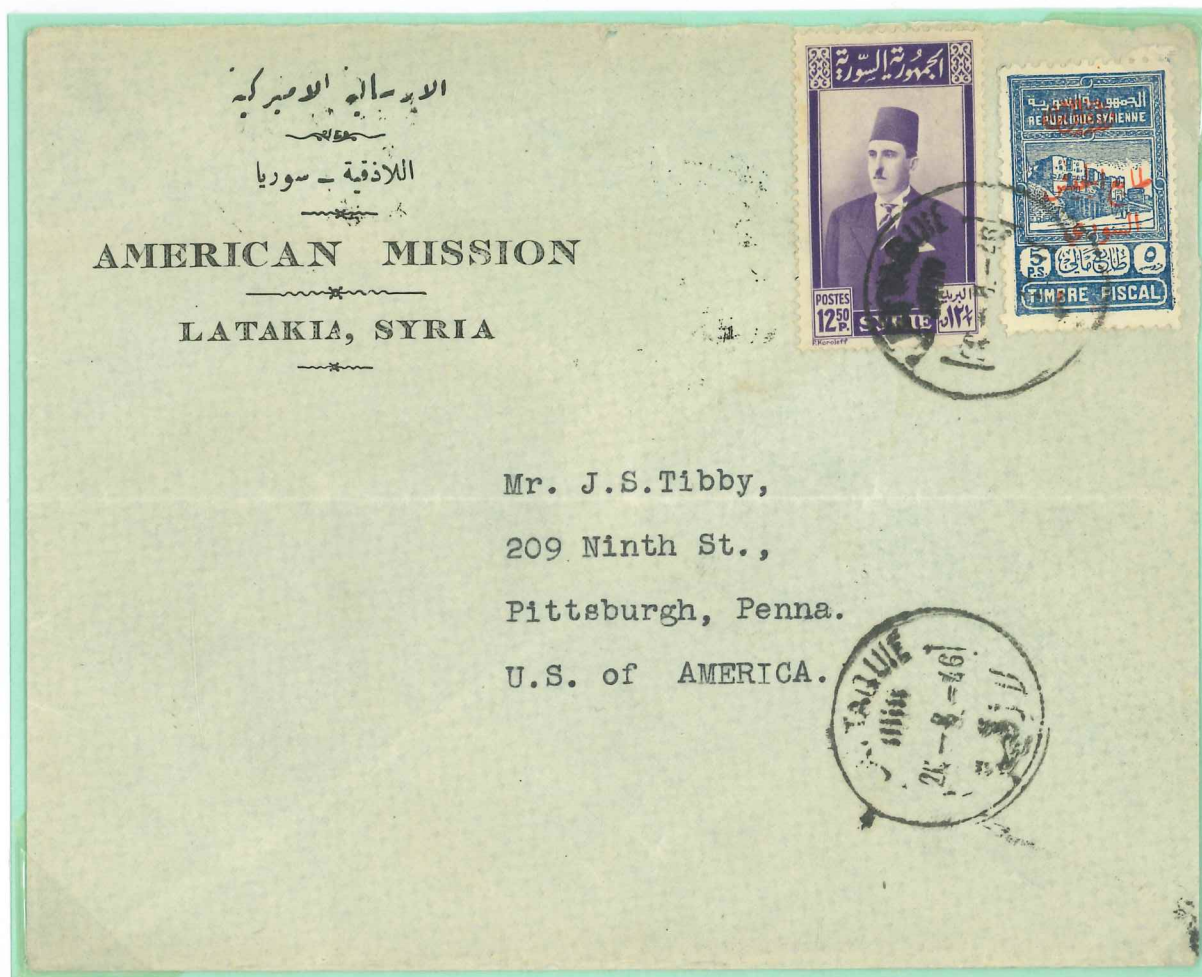
2.2 Blue Stamp with Type III Overprint +  both in Red



A 5 Piaster Fiscal Stamp available in many shades of blue showing Aleppo Citadel Entrance with Type III Overprint +  both in red. This stamp is listed in the International catalogs under the following numbers. In SG T424, in MI Z4 & in YV 296a.




Type III Overprint



An ordinary mail from Latakia, Syria sent in 1946 to Pittsburgh, USA bearing a Fiscal stamp with Type III Overprint +  both in Red.

2.3 Blue Stamp with Type III Overprint + both in Red



A 5 Piaster Fiscal Stamp available in many shades of blue showing Aleppo Citadel Entrance with Type III Overprint +  both in red. Not listed in any catalog.

طابع الجيش
السوري


Type III Overprint

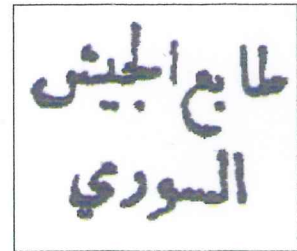


A controlled letter from Aleppo, Syria in 1945 bearing a Fiscal stamp with Type III Overprint +  both in Red.

2.4 Blue Stamp with Type III Overprint + in Red & Black



A 5 Piaster Fiscal Stamp available in many shades of blue showing Aleppo Citadel Entrance with Type III Overprint +  in red & black. This stamp is listed in the International catalogs under the following numbers. In SG T424b, in MI Z7B & in YV 296d.



Type III Overprint

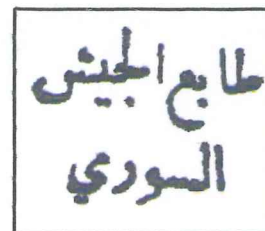


An air mail letter sent in 1945 from Aleppo, Syria to Lille in France 1945 bearing a Fiscal stamp with Type III Overprint +  in Black and Red.

2.5 Blue Stamp with Type III Overprint + in Red & Black




A 5 Piaster Fiscal Stamp available in many shades of blue showing Aleppo Citadel Entrance with Type III Overprint +  in red & black. This stamp is listed in the International catalogs under the following numbers. In SG T426, in MI Z2A & in YV 294a.



Type III Overprint



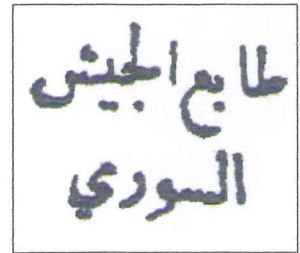
An air mail letter sent in 1945 from Damascus, Syria bearing a Fiscal stamp with Type III Overprint +  in Black and Red.



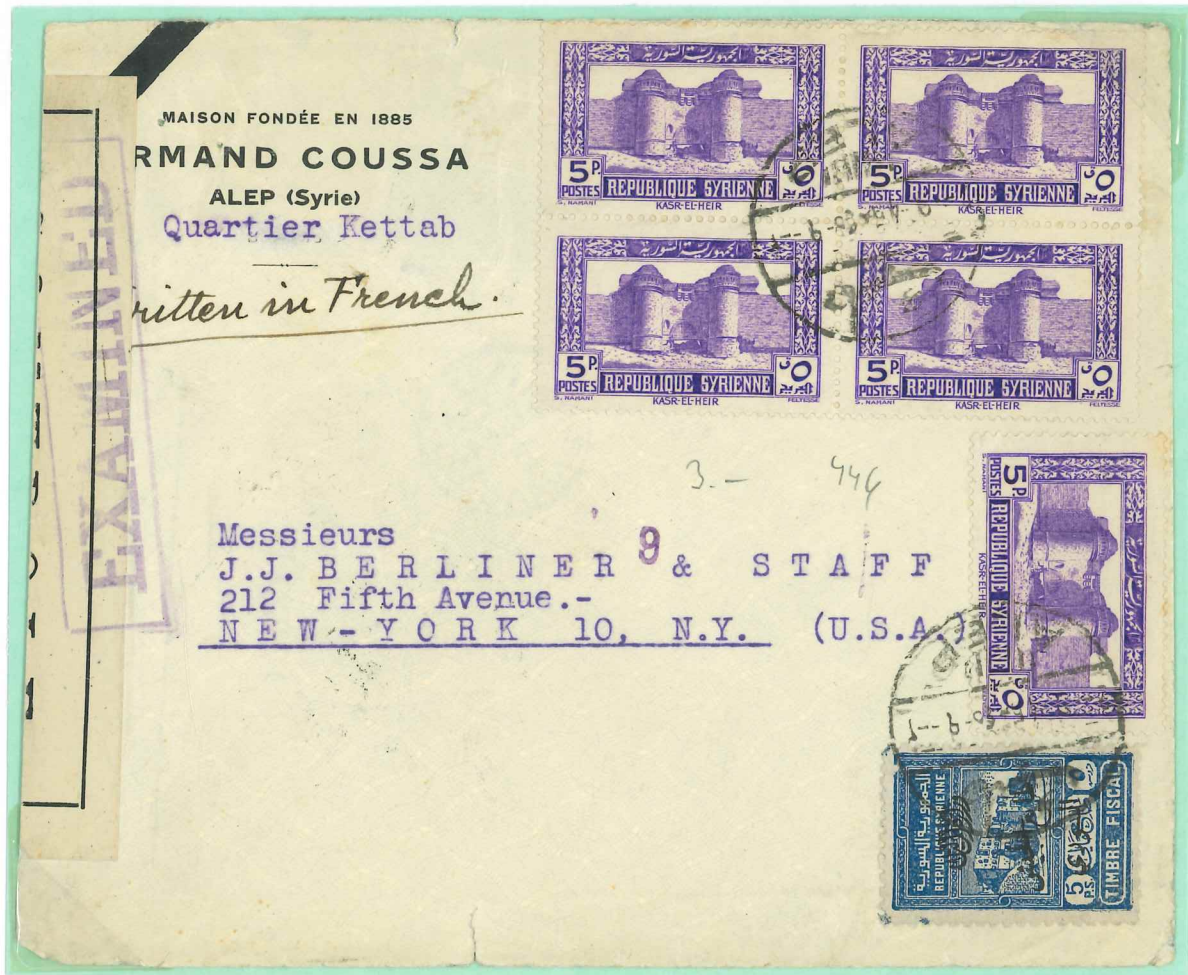
2.6 Blue Stamp with Type III Overprint +  both in Black



A 5 Piaster Fiscal Stamp available in many shades of blue showing Aleppo Citadel Entrance with Type III Overprint +  both in black. This stamp is listed in the International catalogs under the following numbers. In SG T424a, in MI Z7 & in YV 296b.



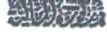
Type III Overprint

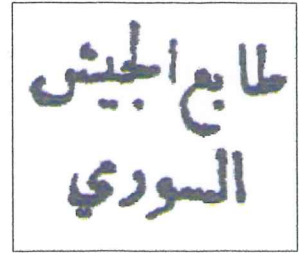


A controlled examined letter sent from Aleppo, Syria to New York, USA bearing a Fiscal stamp with Type III Overprint +  both in Black.

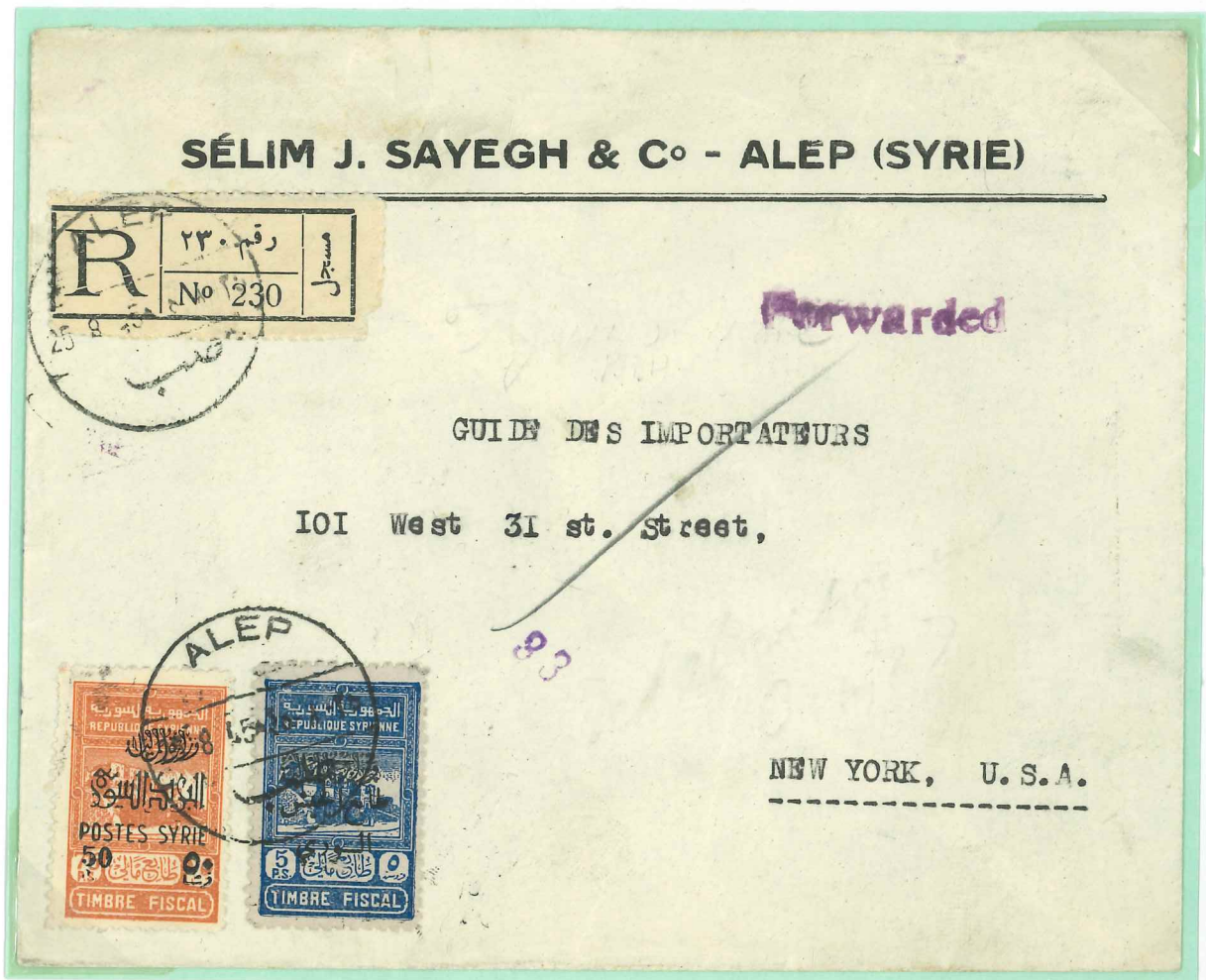
2.7 Blue Stamp with Type III Overprint +  both in Black



A 5 Piaster Fiscal Stamp available in many shades of blue showing Aleppo Citadel Entrance with Type III Overprint +  both in black. This stamp is listed in the International catalogs under the following numbers. In SG T426a, in MI Z6 & in YV 296c.




Type III Overprint

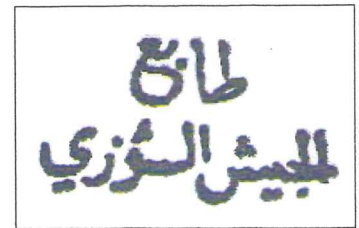


A registered letter from Aleppo, Syria sent in 1945 to New York, USA bearing a Fiscal stamp with Type III Overprint +  both in Black.

2.8 Blue Stamp with Type IV Overprint +  both in Red

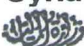


A 5 Piaster Fiscal Stamp available in many shades of blue showing Aleppo Citadel Entrance with Type IV Overprint +  both in red. This stamp is listed in the International catalogs under the following numbers. In SG T422, in MI Z8 & in YV 295.




Type IV Overprint

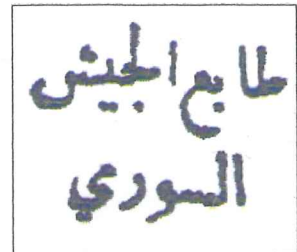


A controlled examined letter was sent from Damascus, Syria in 1947 to Germany bearing a Fiscal stamp with Type IV Overprint +  both in Red.

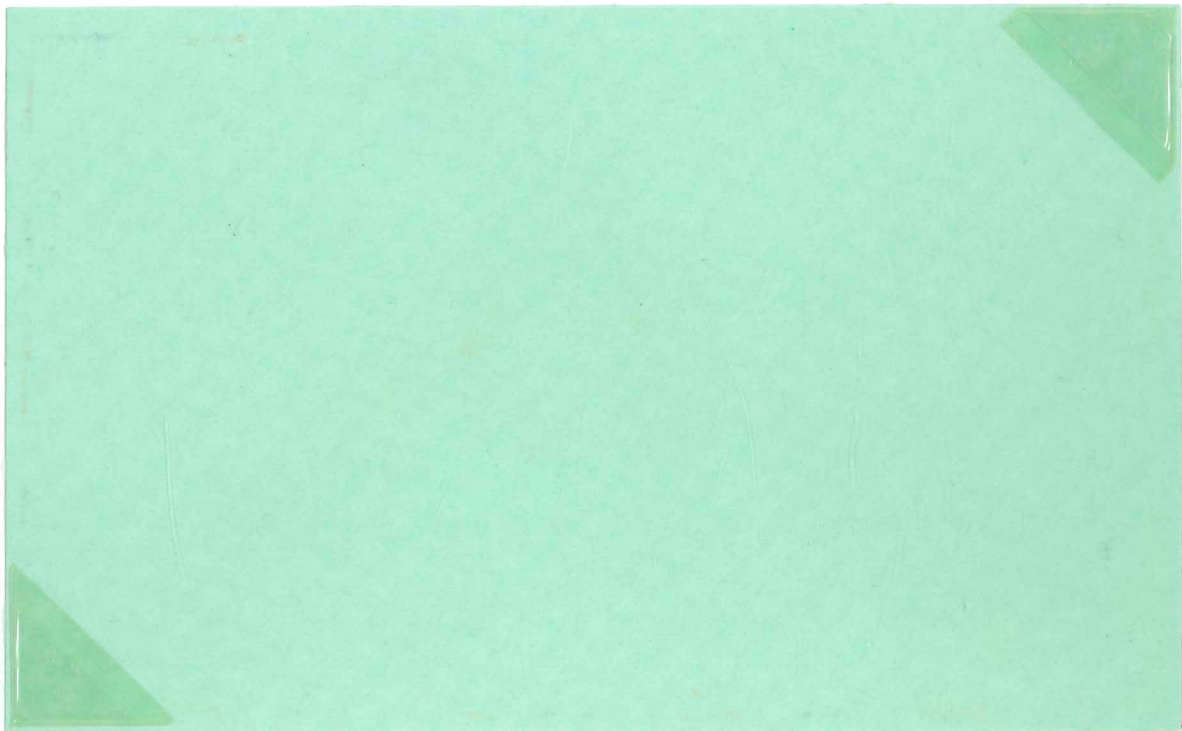
2.9 Blue Stamp with Type IV Overprint + both in Red



A 5 Piaster Fiscal Stamp available in many shades of blue showing Aleppo Citadel Entrance with Type IV Overprint +  both in red. This stamp is listed in the International catalogs under the following numbers. In SG T425, in MI Z9 & in YV 295a.



Type IV Overprint



An air mail letter from Damascus, Syria to St. Gall, Switzerland in 1948 bearing a Fiscal stamp with Type IV Overprint +  both in Red.

3.1 (5) Pia Fiscal Stamp Showing Aleppo Citadel Entrance in Blue



A 5 Piaster Fiscal Stamp available in many shades of blue showing Aleppo Citadel Entrance.



A controlled air mail letter having Syrian censor number 14 was sent from Aleppo, Syria to New York, USA in 1948 bearing a 5 Piaster Blue Fiscal stamp.

3.2 (2 ½) Pia Fiscal Stamp Showing Aleppo Citadel Entrance in Green.



A 2 ½ Piaster Fiscal Stamp available in many shades of green showing Aleppo Citadel Entrance.



A controlled air mail letter having Syrian censor number 16 was sent from Homs, Syria to New York, USA in 1948 bearing two Green Fiscal stamps each 2 ½ Piaster .

3.3 (2) Pia + (1/2) Pia Fiscal Stamps Showing the Syrian Eagle.



A 2 Piaster in green + 1/2 Piaster in light brown Fiscal Stamps available in many shades showing the Syrian Eagle.



An air mail letter from Damascus, Syria to Middlesex, England was sent in 1949 bearing a two Green and two Light Brown Fiscal stamps for the total value of 5 Piaster.