

THE GERMAN COLONY

A Samoan redout during the recent rebellion. Mata'afa was appointed "sub King under the Kaiser".
 German stamps were used from 1st January 1900



No. 180. Lauenburger graph. Kienastadt, Fz Schmitt, Lauenburg, 1899.

A mia 11/07 June 1900
 Cher Esprit
 Samoa-Inseln.
 Je vous envoie
 avec ce
 postale en
 votre honneur
 C'est notre
 maison
 et devant
 et une fortification
 Samoane
 qui n'y est
 plus en l'air
 fait pendant
 la guerre
 1899.



*Fort. von Tanuleuten errichtet.
 les Cocotier devant nous appartiennent nous avons
 toujours beaucoup a boire et il n'y a pas seulement
 a faire mais a manger aussi. — Grand honneur
 a vous mes amis Ca leur. Votre tres affectueux
 P. H.*

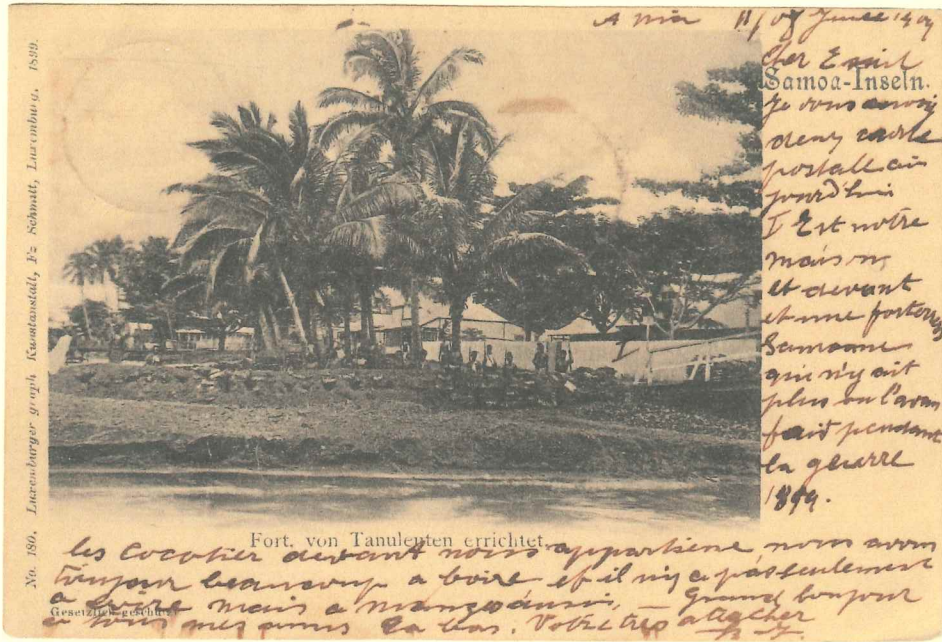
used the current German stamps diagonally overprinted "SAMOA", cancelled with the previous Consulate Agency date stamp.



1906 The historically important German Court House on Beach Road. An eclectic mix of styles of Art Deco & Black Forest, it served for over 100 years, firstly as the German Administrative offices and court house, then as both the New Zealand Administration and the Independent Prime minister's office. By 2014 it was threatened with demolition to be replaced by a modern Chinese office block.

SAMOA - "Yacht Type"

1904 Post Card 10pf rate to France with short personal message on picture side



180 "Rebel fort in recent conflict"

c/850

THE GERMAN COLONY

Ottmar Zeiher Philatelic Card No. 100 in a series depicting the new stamp issue, with the uniform Kaiser's Royal Yacht "HOHENZOLLERN" series for German colonies, which made its appearance in Samoa on January 1 1901.

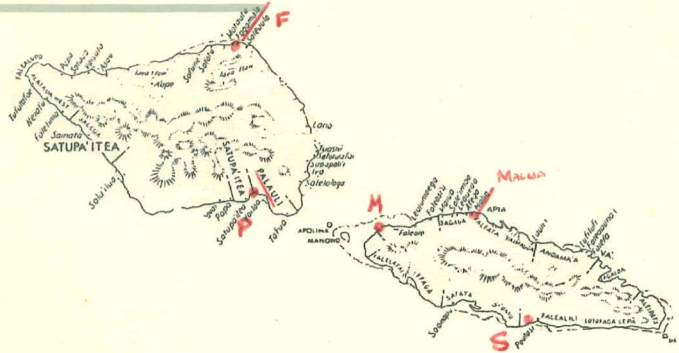
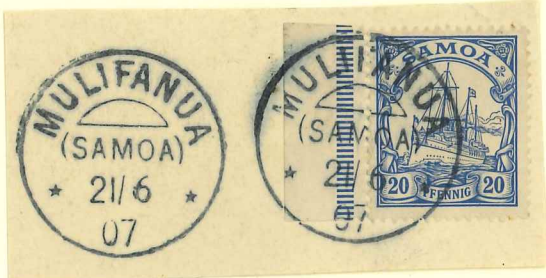


The instruction was to cancel the larger stamps twice to prevent "cut and shut" fraudulent halves being reused.



SAMOA - VILLAGE P.O.

cy 1150



MULIFANUA P.O.
(opened 1 .7.1904)

At the west end of Upolu with the shortest crossing point to Savaii



FAGAMOALO at the northmost tip of Savaii
(Opened 6 11 1903)

PALAU LI district & bay SE Savaii
(Opened 13 1 1905)



MALUA Theolo
(Opened 24 4 1909)



L. R. Wagner
S. de P. Arcora
Apia - Samoa

C/400

SAMOA - VILLAGE P.O.



SALELAVALU P.O.

(opened 4 . 11. 1903)

At the east end of Savaii near Salelologa Wharf with the shortest crossing point to Upolu



0400

SAMOA - APIA Cancels

A bridge type date stamp with sans serif "APIA (SAMOA)" related the earlier POSTAGENTUR canceller, and was used from 10.12.1900 to 30.5.1907



A new canceller with serif Antiqua script "APIA (SAMOA)" was used from 1.6.1907



1889-1900 Gunboat Diplomacy

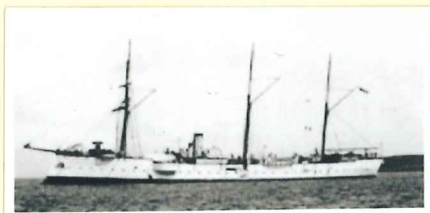
1889 The "Adler" wreck after the Hurricane



7th July 1893, the German **SMS Falke (Falcon) & Bussard (Buzzard)** assisted in the suppression of the revolt led by **Mata'afa Iosefo**. With the British corvette **HMS Curacao**, they bombarded the rebel positions, forcing their surrender. Mata'afa was exiled to the German Karoline Is. Stevenson sympathised and supported his rebel Chiefs in prison.

10.8.1898
 "KAIS. DEUTSCHE
 MARINE
 SCHIFFSPOST
 No 3"

SMS Falke
 while on station in Apia



A further revolt occurred in 1899 when the Malietoa died. **SMS Falke** was back in Apia. As **HMS Porpoise** and **Royalist** and **USS Philadelphia** again shelled Samoan rebels, Falke was hit by "friendly fire"! Mata'afa returned from exile to become Paramount Chief of a German Colony under the Kaiser.

Thomas Trood

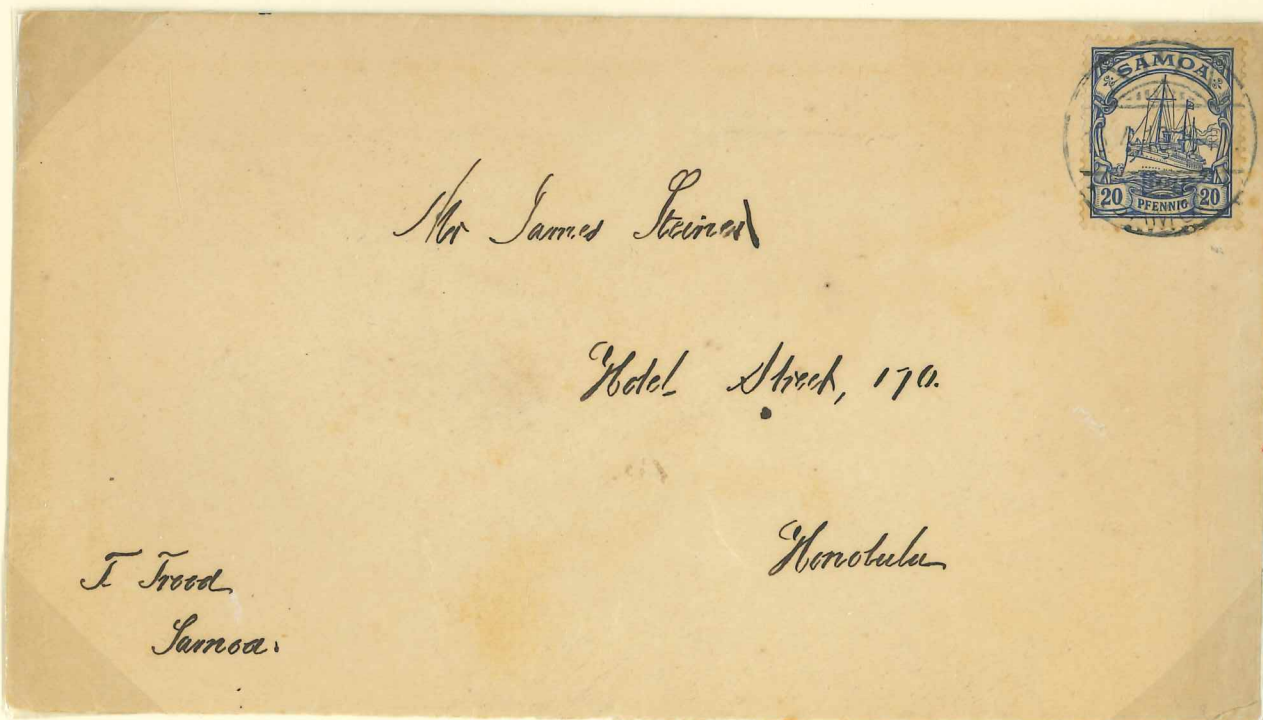
Thomas Trood, "Grand Old Man of Samoa" 1833-1916, an English entrepreneur, bookkeeper, secretary, a respected Apia citizen became Acting Vice Consul in the German Colonial period and Assistant Native Judge in the NZ Military Administration. His death was marked by a procession of 1400 citizens including Samoa Head of State, British Military Administration and many German residents.

When it was realised that R.L. Stevenson's tomb on Mt Vaea was in fact on Trood's land, he made a gift of the land to the Widow.

One of 4 respected early European citizens of Samoa chosen for the 6th year of independence 1968 Trood appears on the 2s.



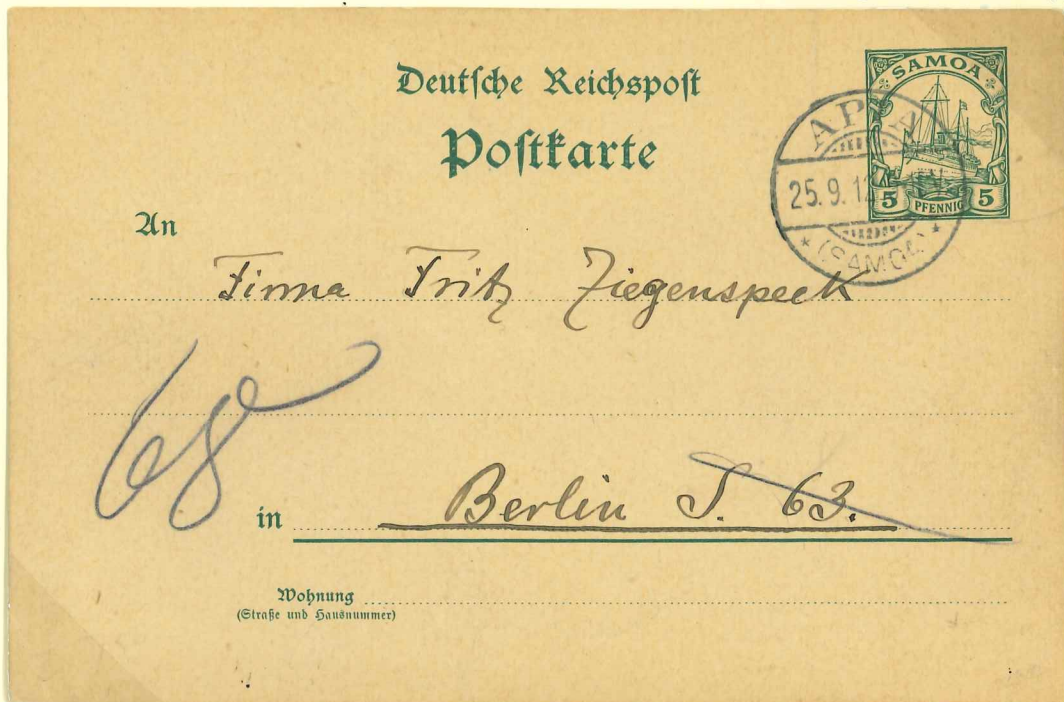
1910 from T. Trood to James Steiner of Pilsen, a prominent Hawaiian businessman and property developer.



(Vice Consul)

SAMOA - LETTER RATE

25.9.1912 Postcard rate to Berlin (Commercial from the Apia Meteorological Observatory)

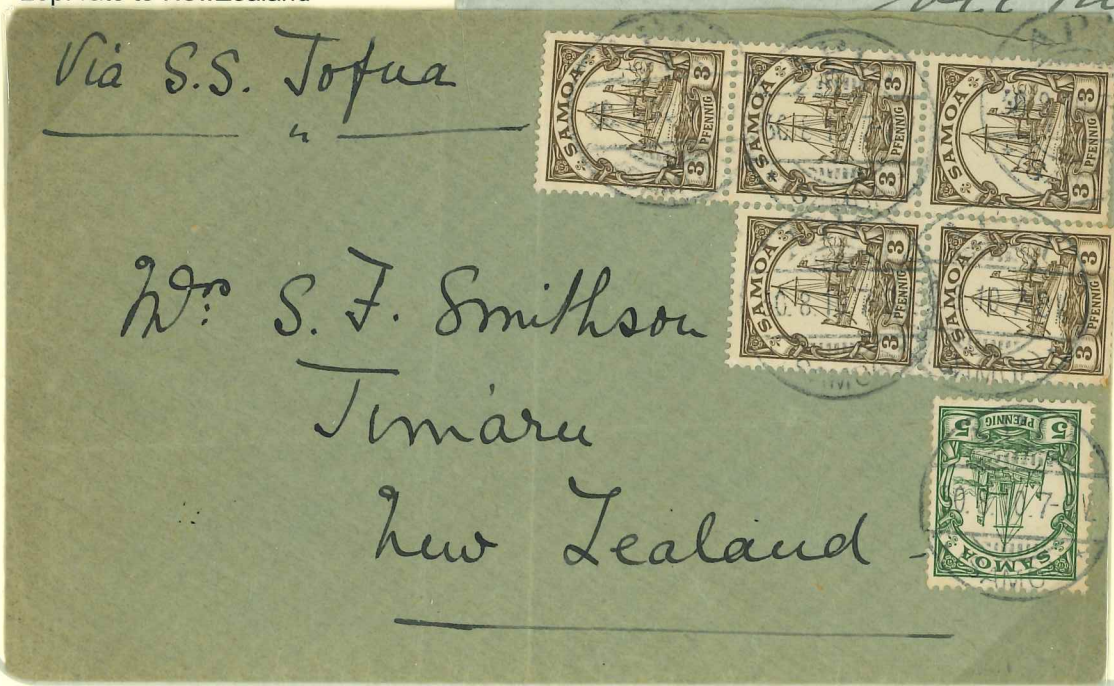


1908 Inland letter rate
10pf to Germany -



30 8 1910

20pf rate to NewZealand



Unusually made up
5x3pf +5pf