

side in TL corner 3650
J0809 Peter Marshall



Bridger & Kay Limited
 British Commonwealth Stamps
 Bought and Sold
 Telephone: 01934 863656
 Email: BridgerKay@aol.com Website: www.bridgerkay.com



603
SG 117sc
c.n. £65
E £20



County Philatelic Auctions, Oakley, Basingstoke, RG23 7JZ
 6m0291 sa. gwmk 242 **4727**
Turks & Caicos
 1909 ¼d - 2s sg115-25
 ovpt Specimen incl both
 ¼d (1x 2s) vf mint ~c£250
 (j) (w)
 1 4472
 www.stampauctions.co.uk county@stampauctions.co.uk



Turks & Caicos Is

Ref: 15332
SG 16-40
T
x 2
£34



Shades
or
4 shades



5 copy
washed
+
1 more
1/- shades
Brecht



u
note

+ yel
green?



SG170y
1922/26 5d sage-
green left marginal
copy wmk invtd &
reversed
FM £55

SG130ax
1913/21 1d red
copy wmk
reversed
FM £45

575



DWTV7
1922 6d mint, wmk reversed,
unobtrusive short perf top rt, attractive
fine SG171xc cat. £80 E£25



New Z

-

E90

shades
3 shades
m. 169

87



654
The contour
HILLS cancel
SG132 is con-
fused by some
compramise view



BLUE HILLS

32
head line
shade
head
m & u
x 2

404

2 x line u
1 x comb



1 x
line u

head m



head
shade
arc in
mark in



head line
comb
u



T5TU 7



head line
13-7
14
m & u



(ALWAYS)
head
down ch
(LINE)
m & u
shade



adverts 2d



head
m & u
comb
shades

need m & u
line shade
CA
need u
comb



need 3
(comb)
u shades
138



M62
816
818



825
820



need
line
on
shade
180

8842
261-69

655
Marshall
75



3970



script
m.u.
shades



UNIVERSAL PHILATELIC AUCTIONS

CODE : LOTNO :

797,157 21367

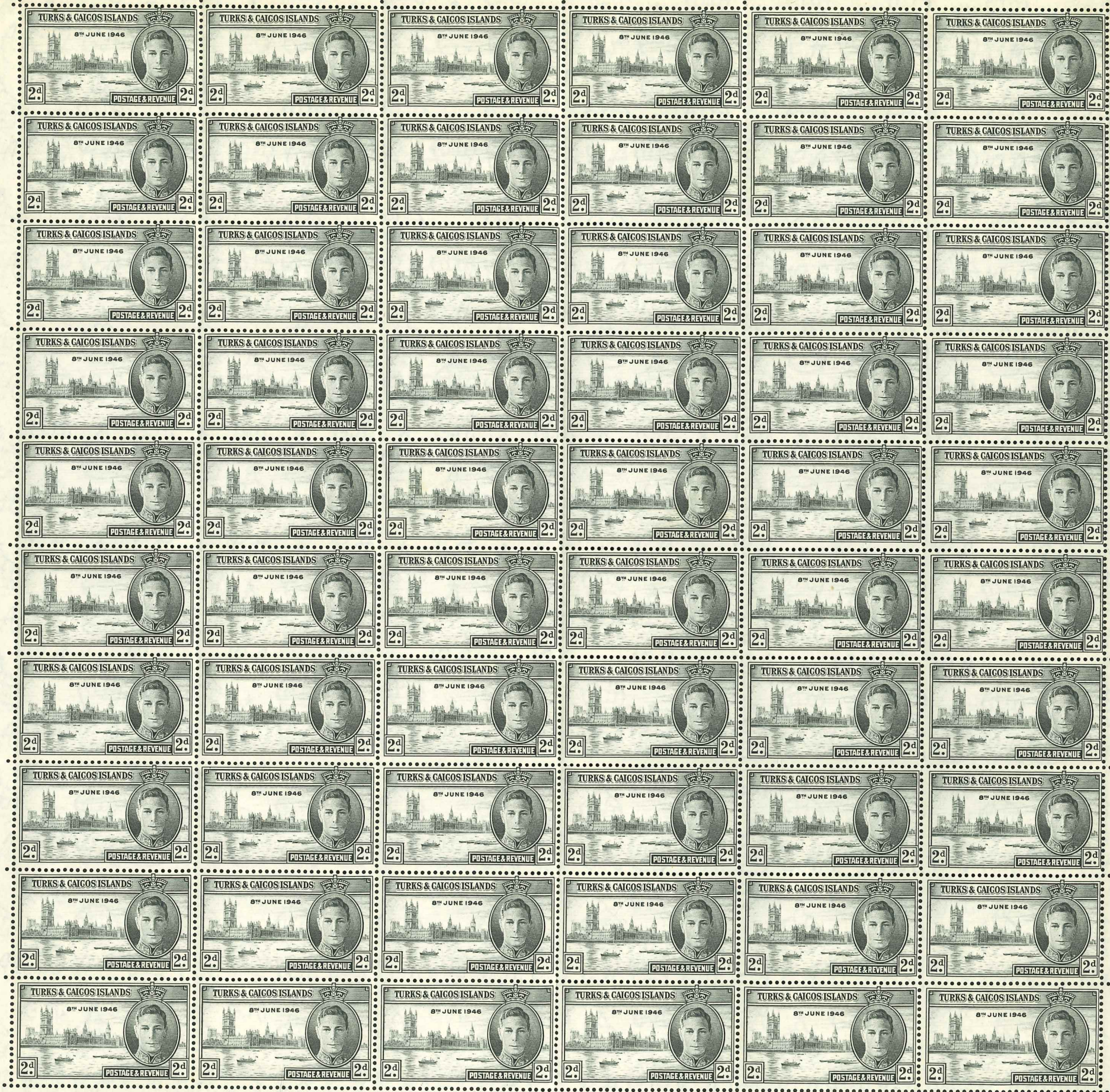


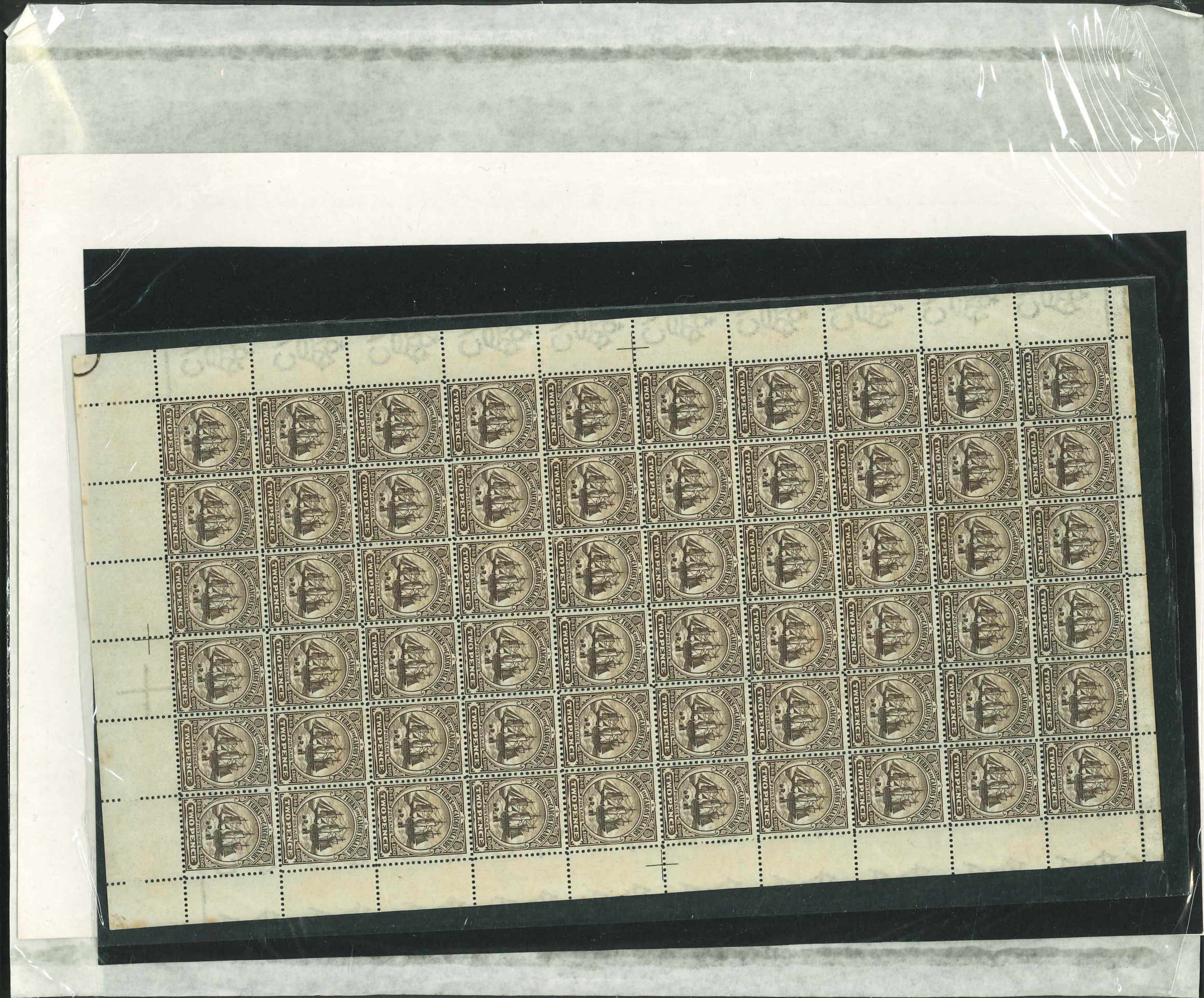


TURKS &
1946 3d
block of
hinged
3cos6

CW S5a
corner block of
461
1/2







Grand Turk

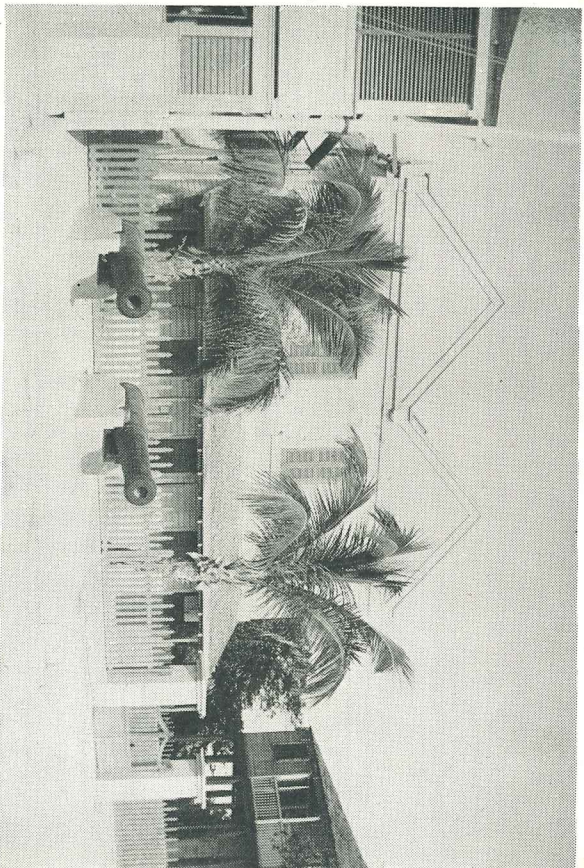


Photo by John R. Wood]

The General Post Office at Grand Turk.
Note the cannon—a relic of bygone days

[By courtesy of "Stamps", New York

The Turks Islands were discovered in 1512, but were not occupied till 1678, when their value for the production of salt was recognized by the colonists of Bermuda.

The population of Grand Turk is about 1700; the main system of mail delivery is by private boxes, or by personal collection from the G. P. O., although any mail which is not collected by 3.0 p.m. each day is delivered by postman.

153 page 49p

1867?

NO WMM

P13-13½!



Forgeries

1882-4



1887

CROWN CA

P14



JPSO TV 28 A collection on 13 pages starting with the 1887 set of 3 m. (5658-60) also 5661 & 5670-72 Royal set m., 1900 Belg set of 9 m., 1909 set to 15 m., 1913 set m. (no 1 or 2); 1922 set to 2s, 1928 set to 1s; 55 set made in 1938 set to 5s 6d 1 common m. and 1950 set m. cat # CCOA #170

1889



1889-93

CROWN CA

P14



1894-5

CROWN CA

P14



1900

CROWN CA (CC 25, 35) P14



1905-8



1909-10

MULT CROWN CA

P14



1913-18

MULT CROWN CA

P14



1917 JAN



1917 OCT



1918



1919



1919



1919 DEC



1921

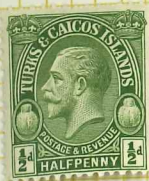
MULTI SCRIPT CA



1922-6



1928



ALBUM LEAF No. 276 W.A. PRANGNELL LTD. 47 SOUTHAMPTON WAY, LONDON, SE5.

Made and Printed in England

1935



1937



1939-45



ALBUM LEAF No. 276 W.A. PRANGNELL LTD. 47 SOUTHAMPTON WAY, LONDON, S.E.5.

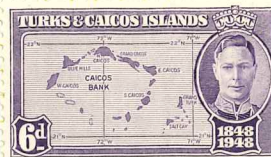
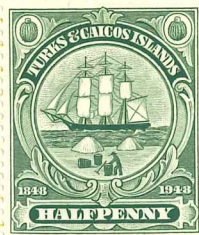
Made and Printed in England

ALBUM LEAF No. 276 W.A. PRANGNELL LTD. 47 SOUTHAMPTON WAY, LONDON, SE5.

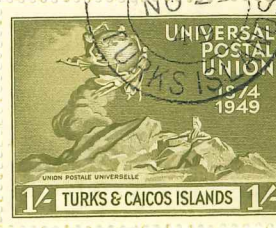
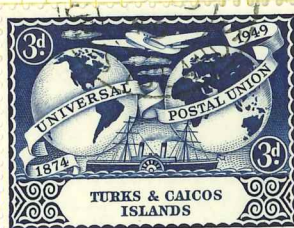
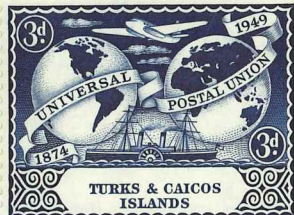
Made and Printed in England



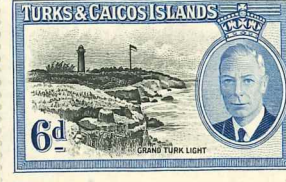
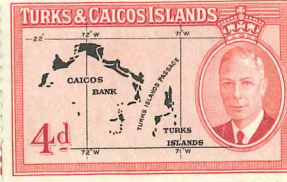
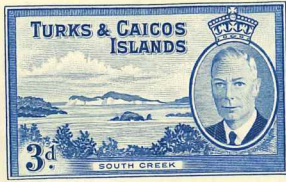
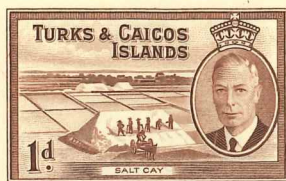
1948



1949



1950



ALBUM LEAF No. 276 W.A. PRANGNELL LTD. 47 SOUTHAMPTON WAY, LONDON, SE5.

Made and Printed in England

1953



1955

