

AIR MAIL
PERTH WEST AUSTRALIA
27 SEP 1935
YOUR HANDS

AIR MAIL.

If not delivered within 7 days return to [illegible], Adelaide

EXAM
DENVER - COLORADO -
E. E. U. N. A. -

Official Post Office Cover
PRIME MINISTERS 1913-1929
ANDREW FISHER
EDWIN COOK
Australia

AIR MAIL
MELBOURNE
AUSTRALIA
9c

AUSTRALIA
POSTAGE
1935

PERTH WA
SEP 1935
POST EARLY

U. S. POSTAGE
charge to collect 8 cents
San Pedro, California
GEO. W. OLINGER Esq
2600. 16th Street
DENVER. II. COLO., U.S.A.

TRAGEDY
28475

ROYAL MAIL MINT STAMPS

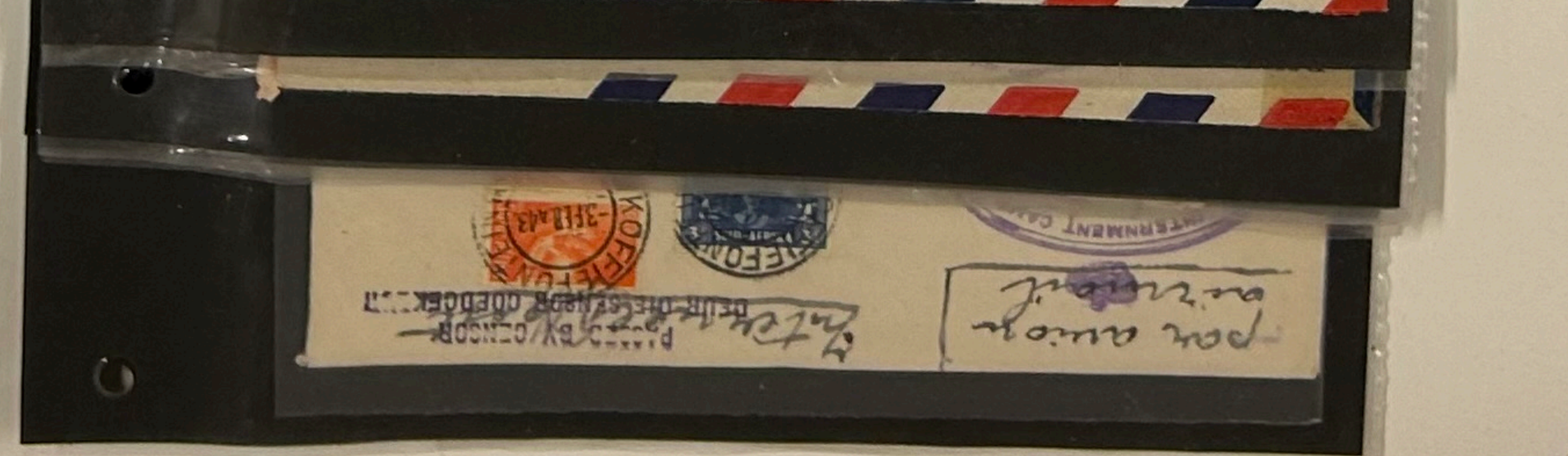
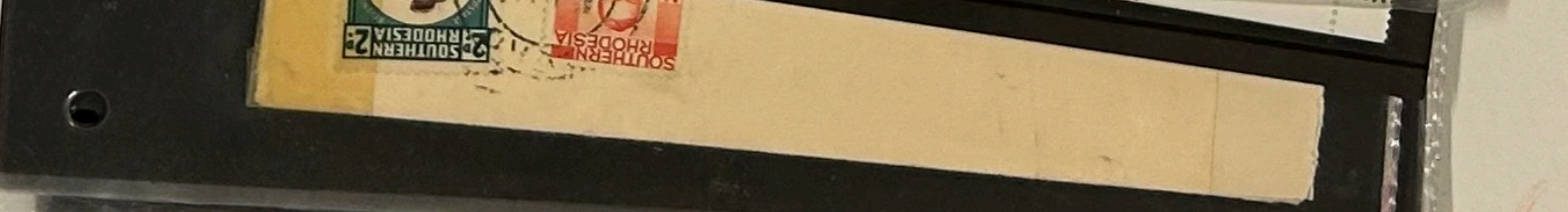
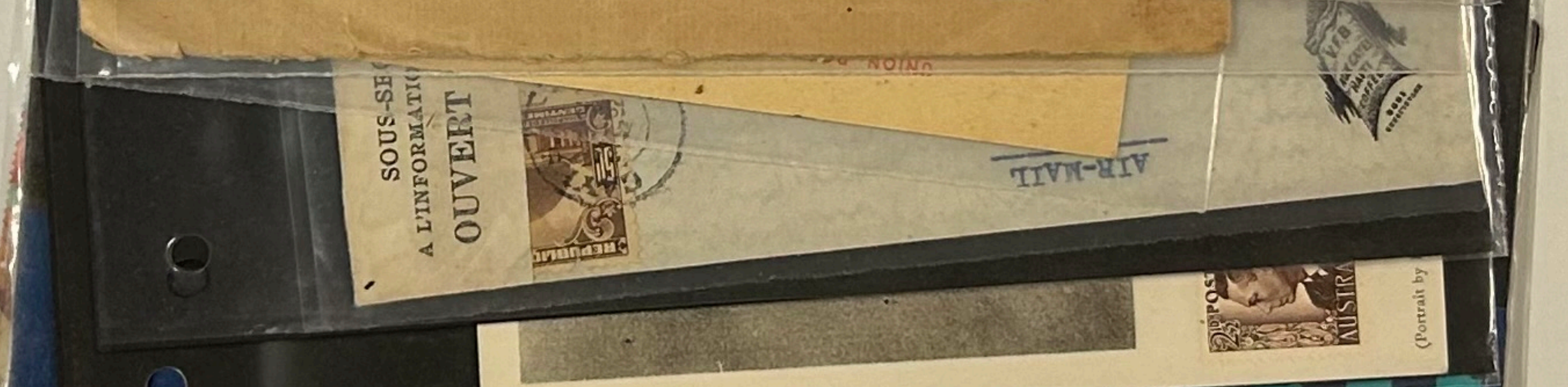
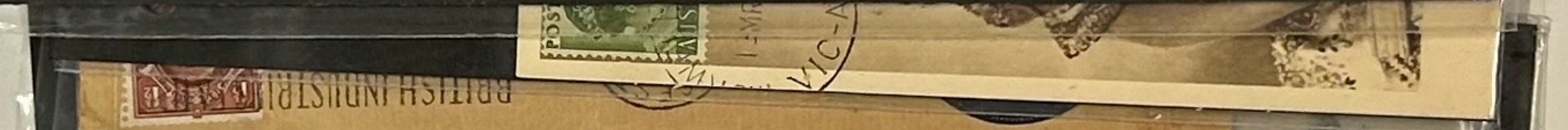
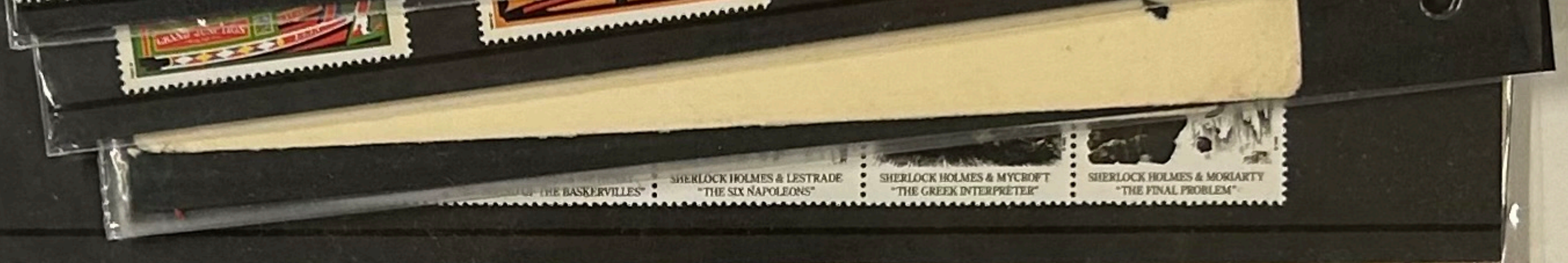
246 (6.3.1993)

ORCHIDS



CYMRU
Low value definitive stamps
WALES

Stampiau Myn
British Post Office



CHRISTMAS ISLAND

This Polynesian island was discovered and named by Captain Cook on December 25, 1777. It is a coral atoll of 400,000 acres that is planted with some 500,000 coconut palm trees, and is operated by Central Pacific Coconut Plantations, Ltd. under a 99 year lease obtained from the British Government in 1914.



There is no mail service except that provided by the company which, about 1915, issued stamps serving to reimburse the company for expenses involved with delivering mail to official ports, such as Papeete, Tahiti or the Hawaiian Islands, each some 1,000 miles distant. The stamp was cancelled by the company's agent, and the letter affixed with proper postage at the port of arrival, thus insuring that the letter would be carried on to its final destination.

These stamps are from the Commonwealth of Australia,
Department of Territories presentation booklet.



Printed in the U.S.A.

SAF-HOBBY PRODUCTS • 2721 16th Ave. • Allentown, PA •

SAF No. 08-00001

CHRISTMAS ISLAND

Unwatermarked
1965



1968



CHRISTMAS ISLAND

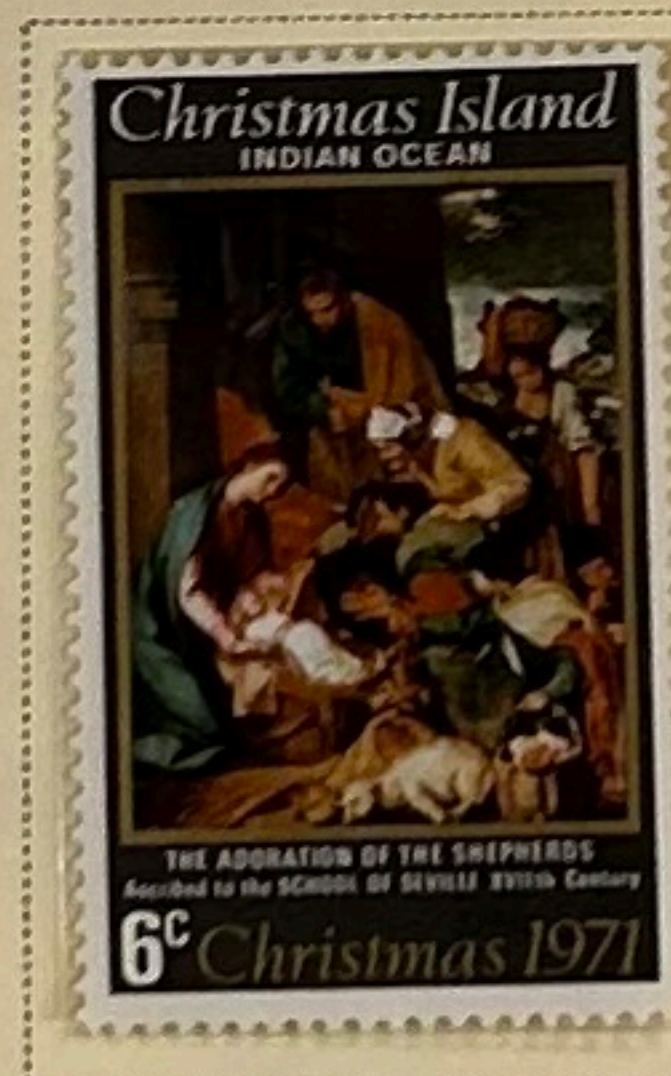
Unwatermarked
1969



1970



1971



1972



CHRISTMAS ISLAND

Unwatermarked
1972-1973



1973



CHRISTMAS ISLAND

Unwatermarked
1974



1975



1976



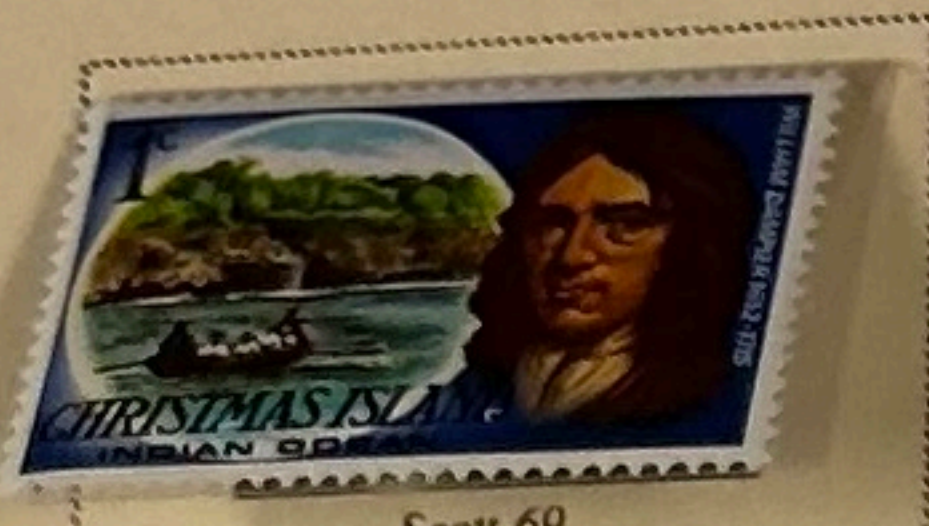
1977



Australia #31-4
AN OFFICIAL **SCOTT** ALBUM PAGE

CHRISTMAS ISLAND

1977-78



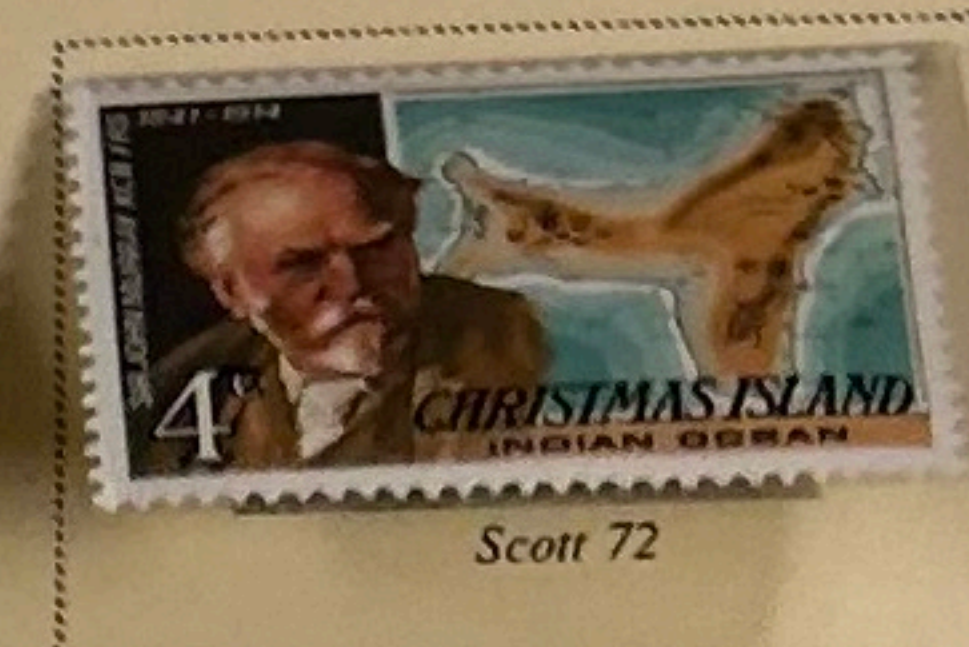
Scott 69



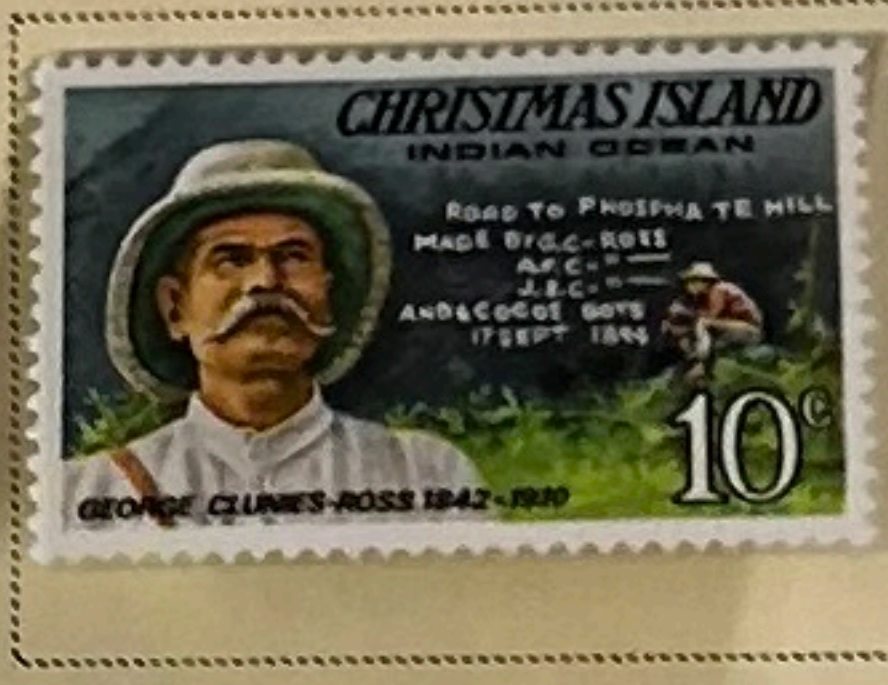
Scott 70



Scott 71



Scott 72



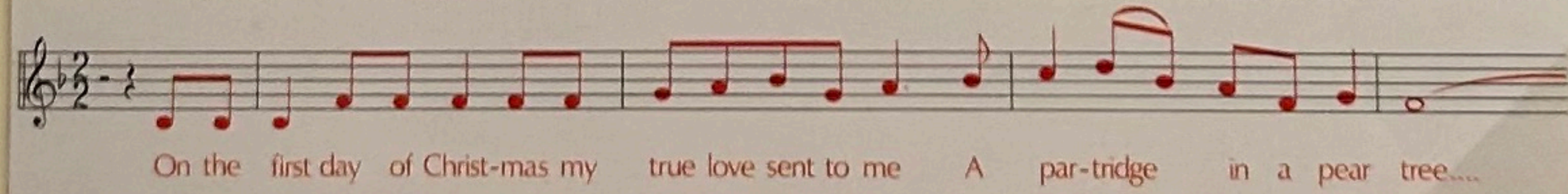
Australia & Dep. -4
AN OFFICIAL **SCOTT** ALBUM PAGE

CHRISTMAS ISLAND

Watermarked St. Edward's Crown and C A Multiple, in Spiral or Unwatermarked
1977

Christmas 1977

THE TWELVE DAYS OF CHRISTMAS












Australia #31-6
AN OFFICIAL **SCOTT** ALBUM PAGE

CHRISTMAS ISLAND

1978

The Song of Christmas

 <p>CHRISTMAS ISLAND CHRISTMAS 1978 CHRIST CHILD 10c</p>	 <p>CHRISTMAS ISLAND CHRISTMAS 1978 HERALD ANGELS 10c</p>	 <p>CHRISTMAS ISLAND CHRISTMAS 1978 REDEEMER 10c</p>
 <p>CHRISTMAS ISLAND CHRISTMAS 1978 ISRAEL 10c</p>	 <p>CHRISTMAS ISLAND CHRISTMAS 1978 STAR 10c</p>	 <p>CHRISTMAS ISLAND CHRISTMAS 1978 THREE WISE MEN 10c</p>
 <p>CHRISTMAS ISLAND CHRISTMAS 1978 MANGER 10c</p>	 <p>CHRISTMAS ISLAND CHRISTMAS 1978 ALL HE STANDS FOR 10c</p>	 <p>CHRISTMAS ISLAND CHRISTMAS 1978 SHEPHERDS CAME 10c</p>

C is for the CHRIST child, BORN up-on this DAY,
H for he-rald an-gels in the night. — R means our re-dec-orer,
I means Is-ra-el, S is for the star that shone so BRIGHT.
T is for three wise men, they who tra-velled far; M is for the
man-ger where he lay — A's for all he stands for, S means shep-herds
came: and that's why there's a CHRIST-mas DAY.

Australia & Dep.-6
AN OFFICIAL SCOTT ALBUM PAGE

CHRISTMAS ISLAND

1979



Australia-6
AN OFFICIAL SCOTT ALBUM PAGE

CHRISTMAS ISLAND
1980-81



Australia & Dep. #34-5
AN OFFICIAL **SCOTT** ALBUM PAGE

CHRISTMAS ISLAND

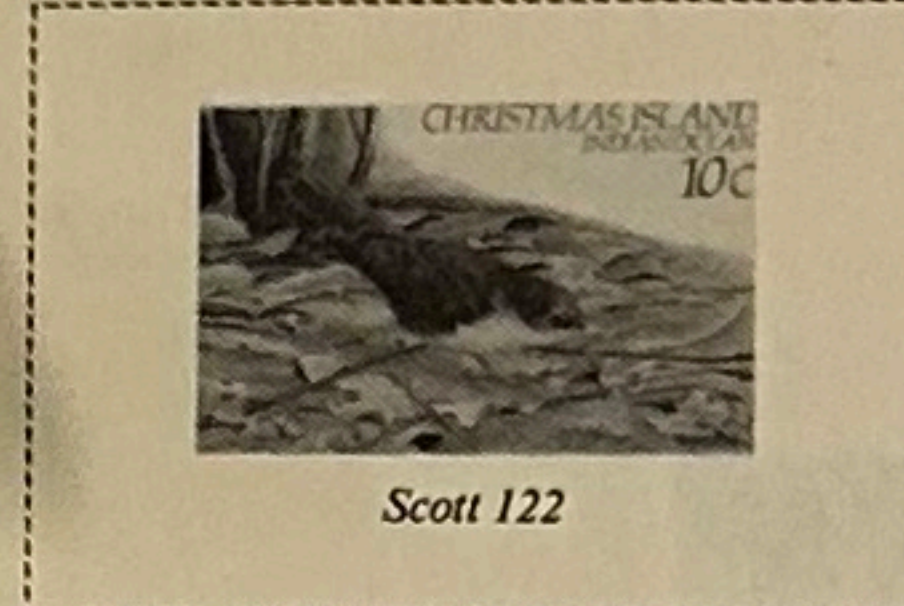
1980



Australia & Dep. #34-6
AN OFFICIAL **SCOTT** ALBUM PAGE

CHRISTMAS ISLAND

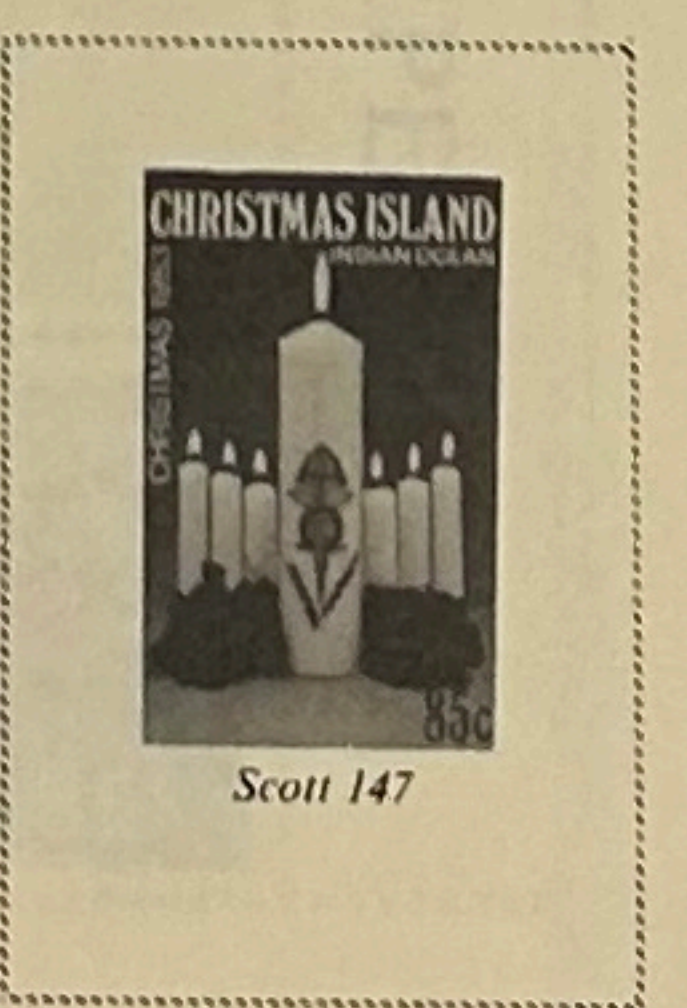
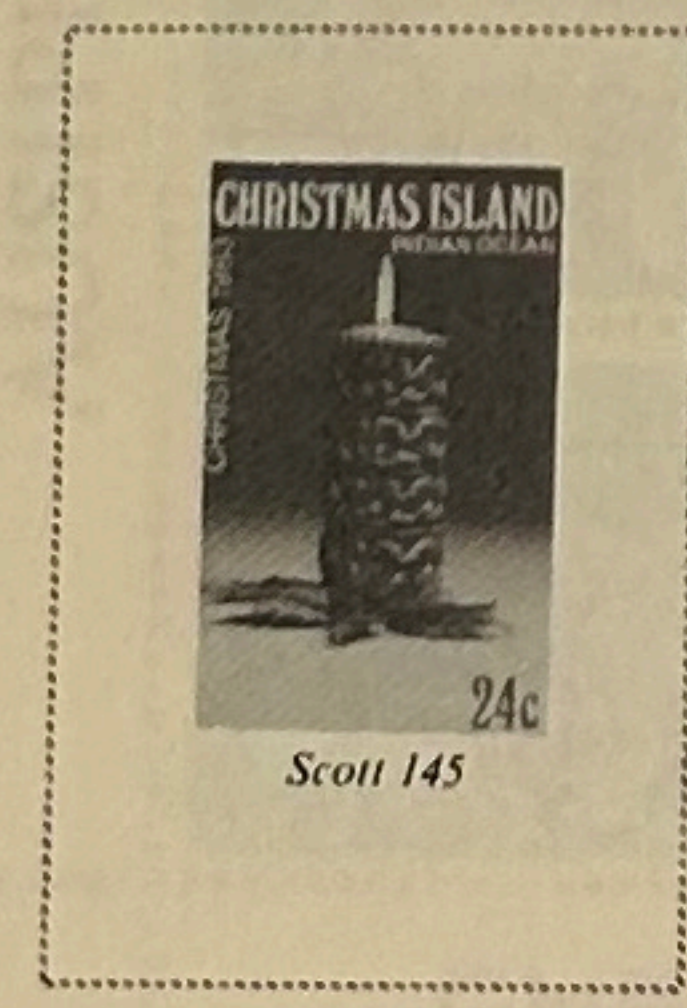
1982



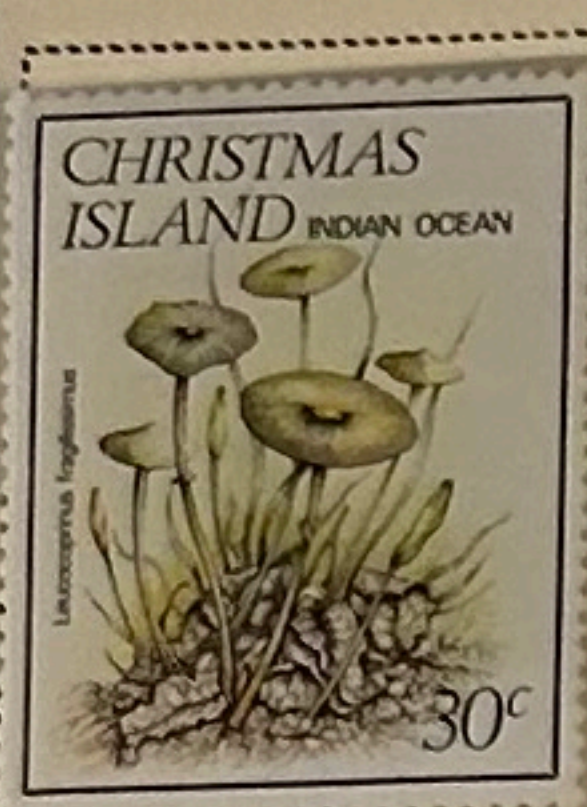
Australia and Dependencies #39 5 of 12
AN OFFICIAL **SCOTT** ALBUM PAGE

Australia & Dependencies #37.4 of 9
AN OFFICIAL **SCOTT** ALBUM PAGE

CHRISTMAS ISLAND



CHRISTMAS ISLAND
1984

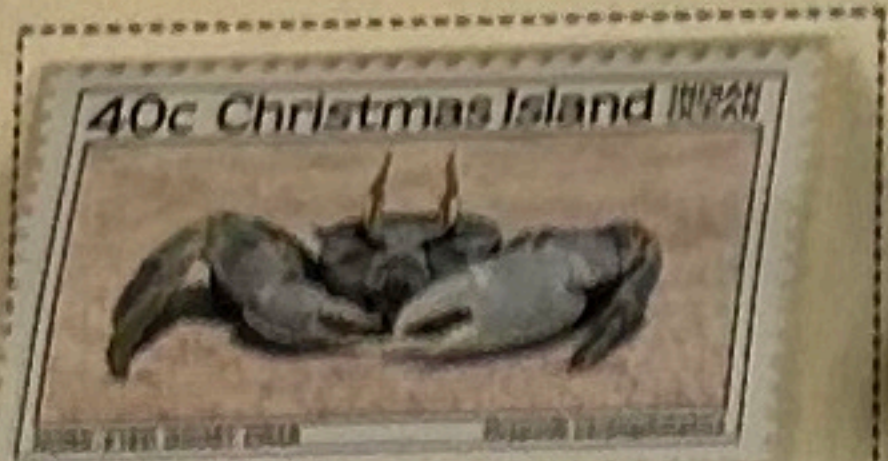


Australia and Dependencies #38 6 of 11
AN OFFICIAL **SCOTT** ALBUM PAGE

CHRISTMAS ISLAND
1985



Scott 162



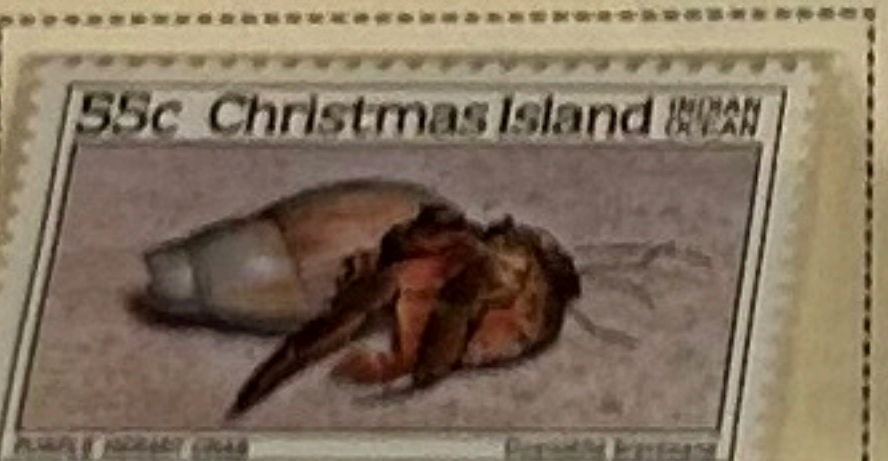
Scott 165



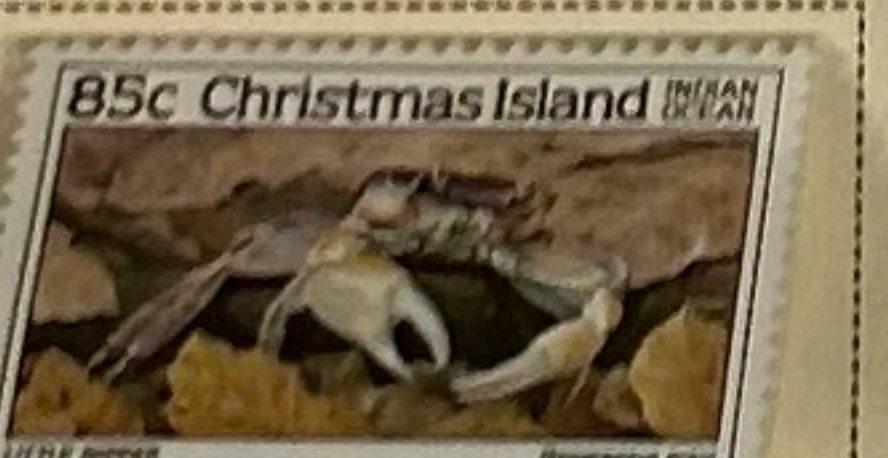
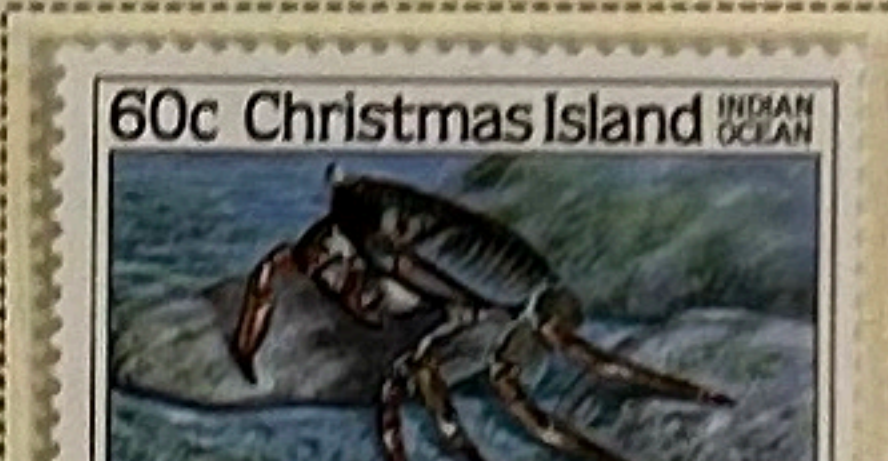
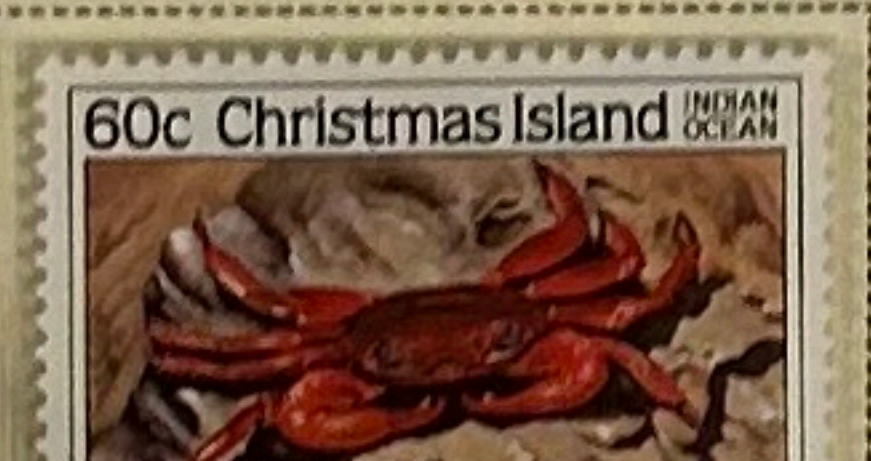
Scott 166



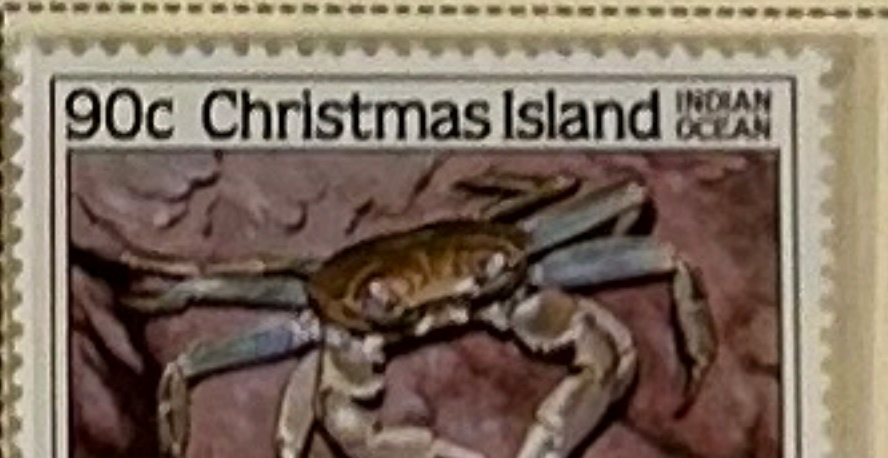
Scott 167



Scott 168

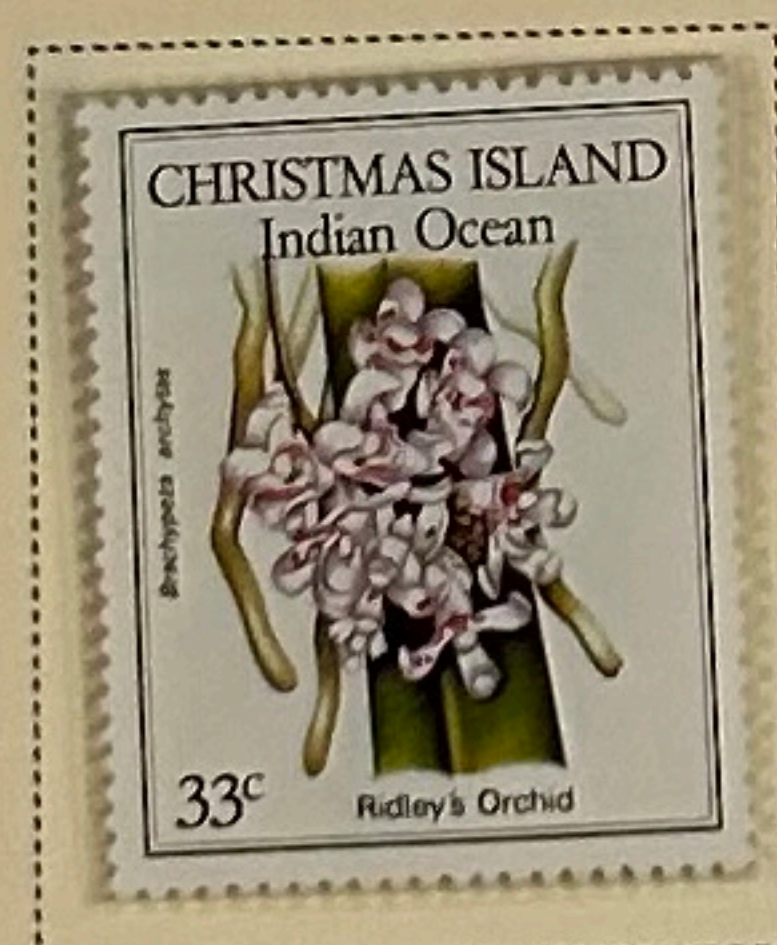
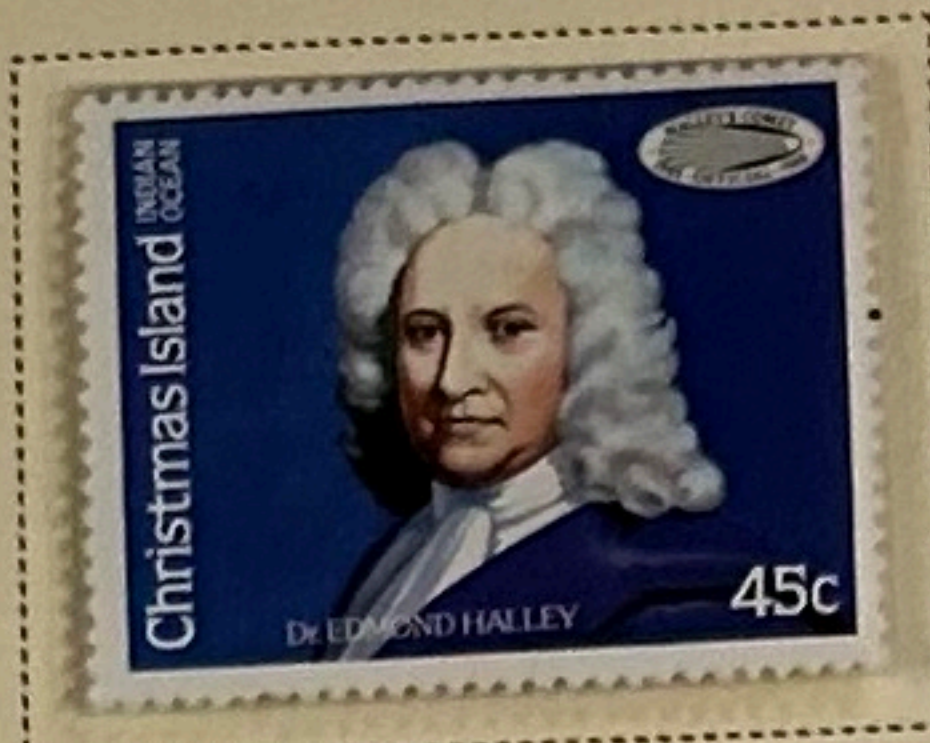


Scott 171



Australia and Dependencies #29 6 of 12
AN OFFICIAL **SCOTT** ALBUM PAGE

CHRISTMAS ISLAND
1985-86





3271

SB 80
296a

3/2
SB4a

SB
78a

3207 267

011
267
Peters

WIV

45
425

TS dot left

294c-267
SB59a

SB90



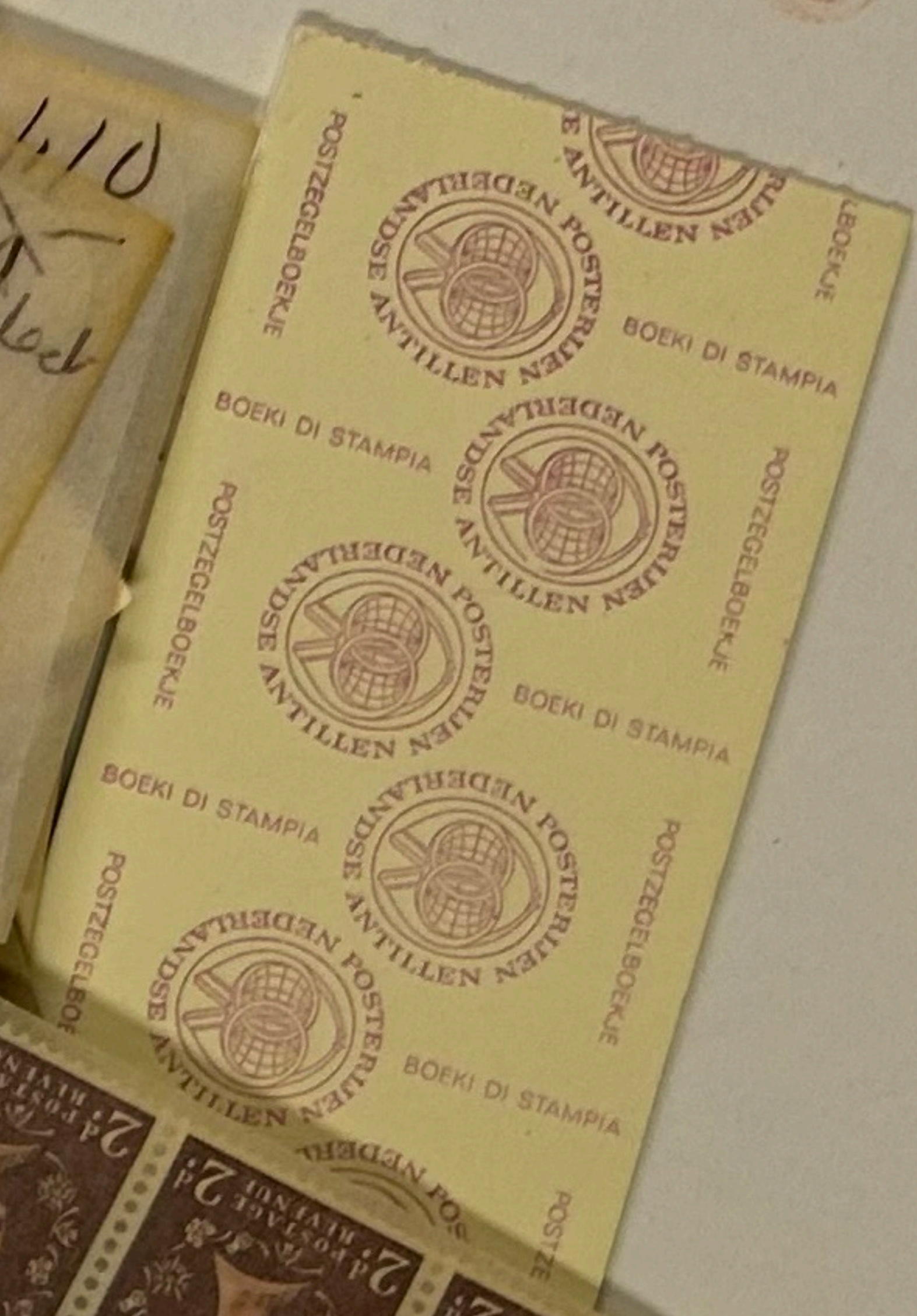
SB59

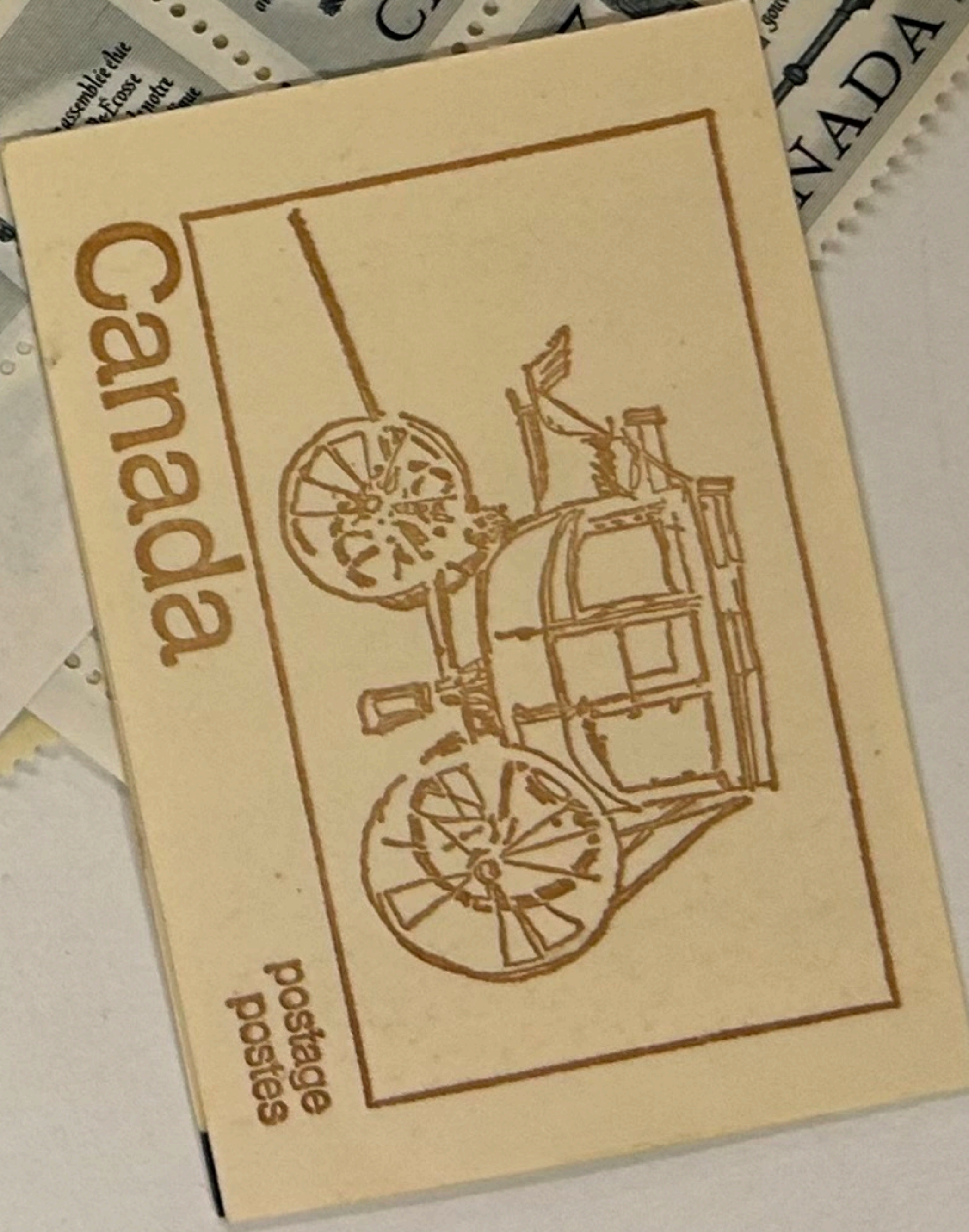
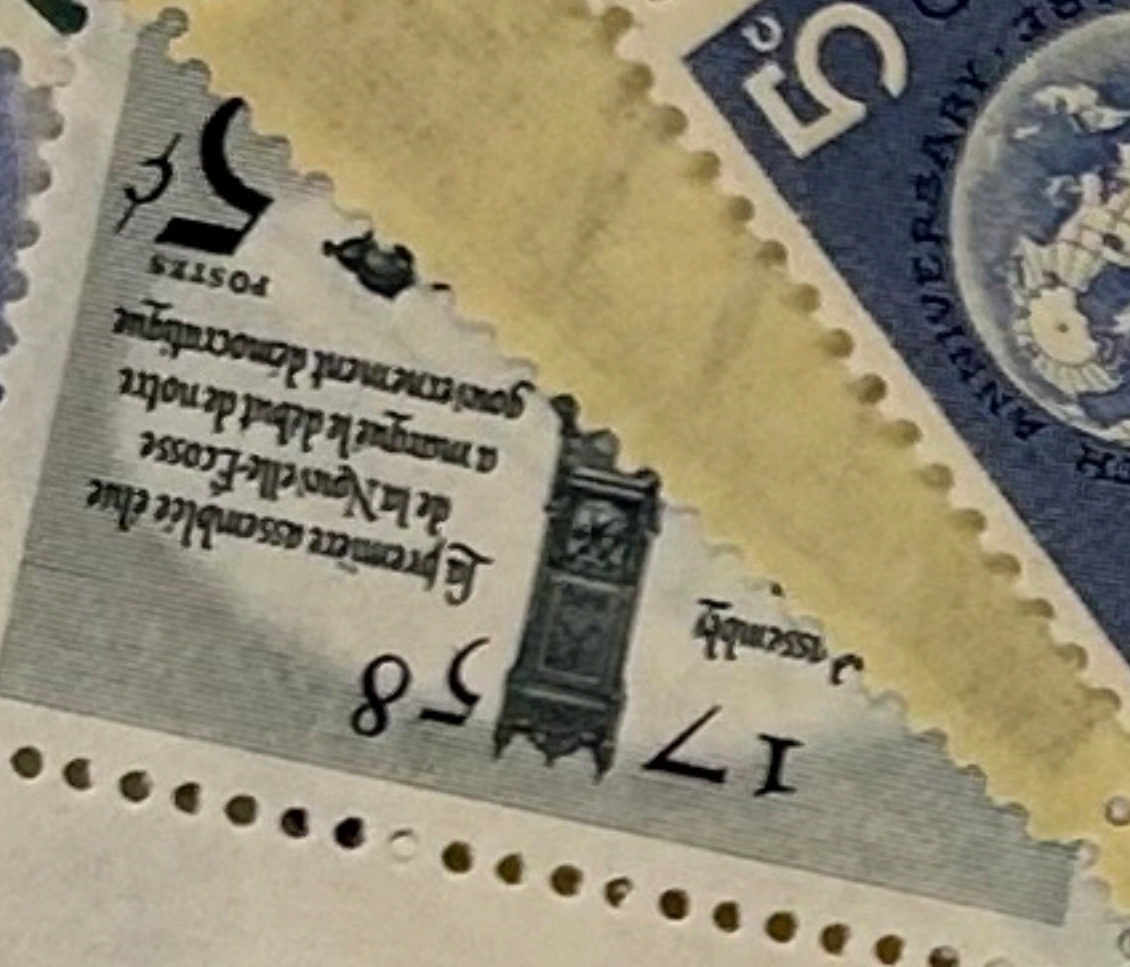
294c-267

CTL G2

COTTINGHOLM
THEATRE

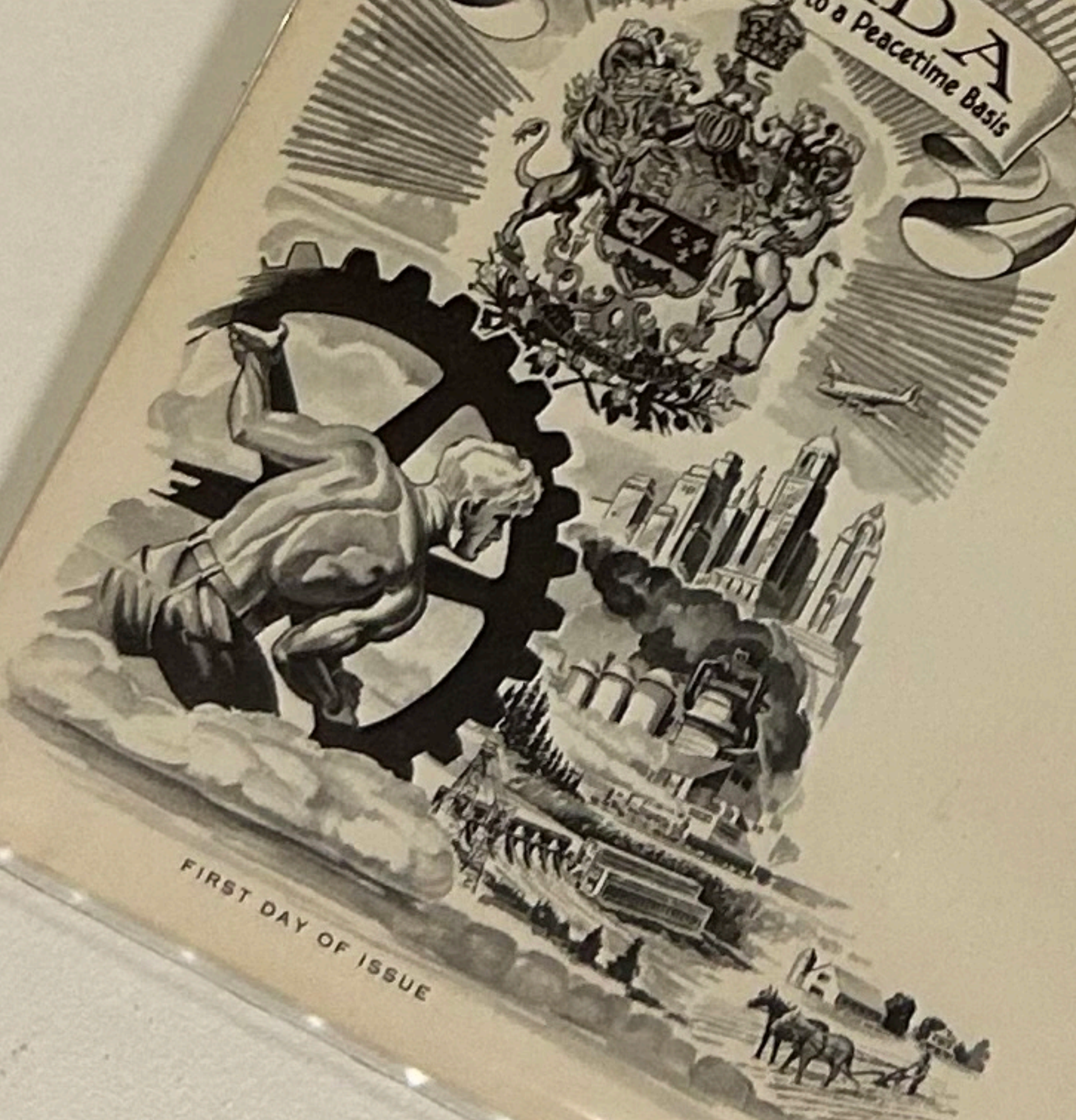
295a-267







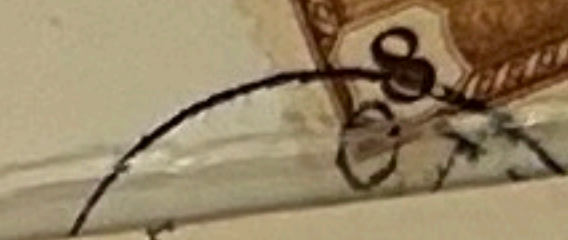
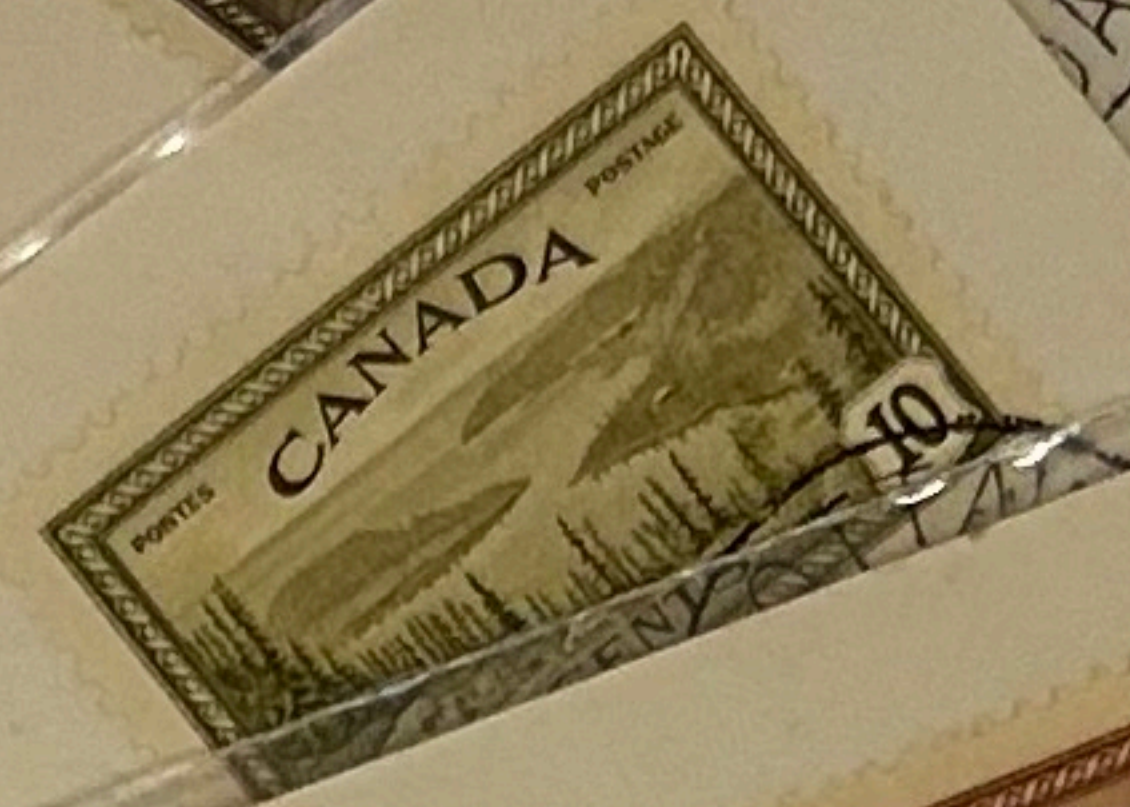
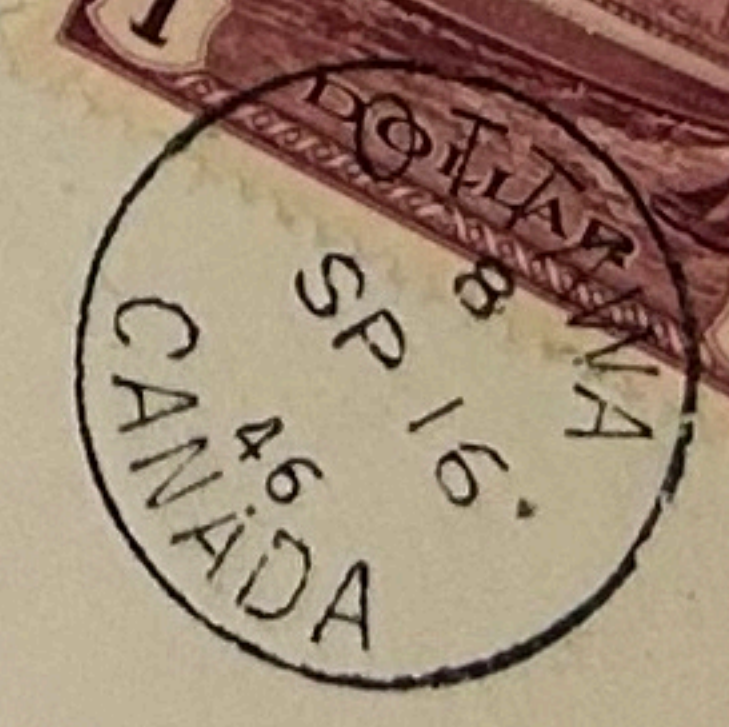
CANADA
Reconverts Industrially to a Peacetime Basis



FIRST DAY OF ISSUE

Artmaster

Chas. D. Forney
4705 Vine Str
Denver 16 Colorado



27

900

300

4500



4 SECOND CLASS STAMPS

Royal Mail

10x 37c STAMPS

Australia Post

\$3.70

10x 39c STAMPS

Australia Post

\$3.90



UNION ISLAND, SUNSET

ADMIRALTY BAY, BEQUIA ISLAND



