

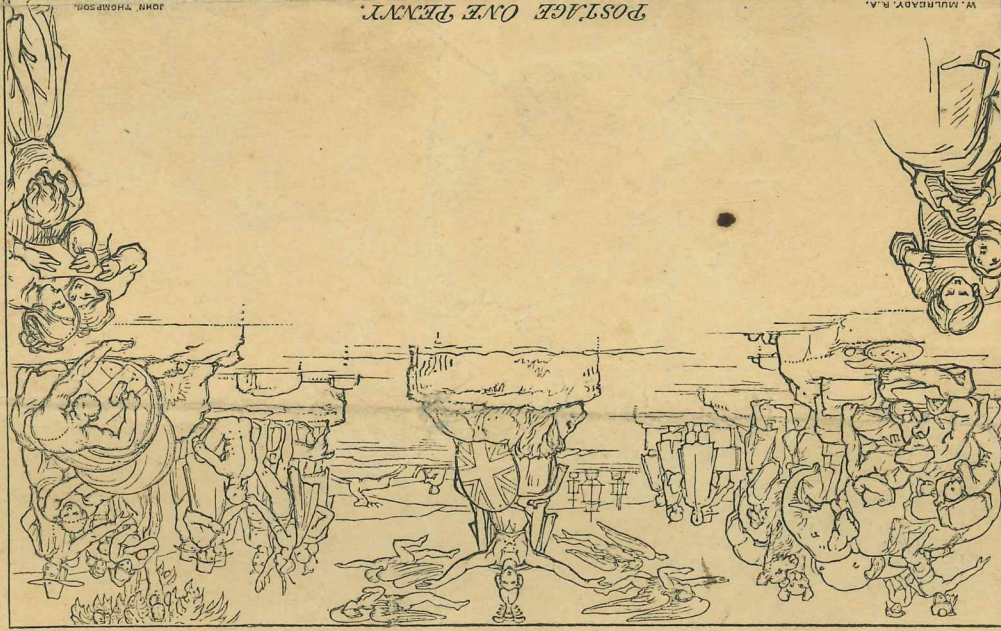
RATES OF POSTAGE.—INLAND LETTERS not exceeding half an ounce, are charged one penny.

Exceeding half an ounce, but not exceeding 1 ounce, twopence.
" " 1 ounce 3 ounces, fourpence.
" " 2 ounces 3 ounces, sixpence.

And so on an additional twopence for every additional ounce. With but few exceptions the weight is limited to 16 ounces. Unstamped Letters are charged double postage on delivery. These, insignificantly stamped, double the amount of such insufficiency.

COLONIAL LETTERS. If sent by packet, twelve times, if by private ship, eight times, the preceding rates. **FOREIGN LETTERS.** The packet rates are too various to be enumerated here. The ship rates are the same for Foreign as for Colonial Letters. As regards both Foreign and Colonial Letters, there is no limitation as to weight. All sent outwards, with few exceptions, must be prepaid by money, or by stamps; and those going by private ship must be marked "Ship Letter,"

It is **REQUESTED** that all Letters may be fully and legibly addressed, and posted as early as convenient. Also that whatever kind of stamp may be used, it may invariably stand above the address, and towards the right hand side of the Letter.



POSTAGE ONE PENNY.

A 238

PRICES OF STAMPS.

At a **POST OFFICE**.—Labels, 1d. and 2d. each. Covers, 1½d. and 2½d. each.
At a **STAMP DISTRIBUTOR**, as above, or as follows:—
Half-ream, or 240 Penny Covers, L1. 2. 4.—Penny Envelopes, L1. 1. 9.
Quarter-ream, or 120 Twopenny Covers, L1. 1. 4.—Twopenny Envelopes, L1. 1. 1.

At the **STAMP OFFICES** in London, Dublin, and Edinburgh, as above, or as follows:—
2 Reams, or 960 Penny Covers, L4. 7. 0.—Penny Envelopes, L4. 5. 0.
1 Ream, or 480 Twopenny Covers, L4. 3. 6.—Twopenny Envelopes, L4. 2. 6.

Covers may be had at these Prices, either in Sheets, or cut ready for use. Envelopes in Sheets only, and consequently not made up. No one, unless duly licensed, is authorized to **SELL** Postage Stamps.

The Penny Stamp carries half an ounce (Inland), the Twopenny Stamp one ounce. For weights **EXCEEDING ONE OUNCE**, use the proper number of Labels, either alone, or in combination with the Stamps of the Covers or Envelopes.

MONEY. Coin, if enclosed in Letters at all, should be folded in paper, sealed, and then fastened to the inside of the Letter; but, to avoid risk, a money order should be used whenever practicable.

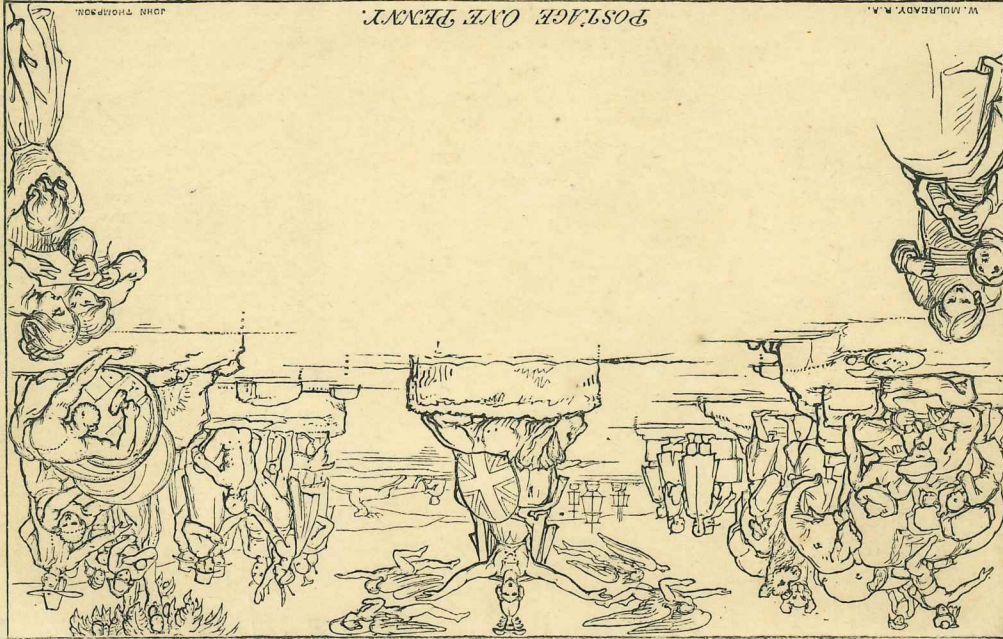
RATES OF POSTAGE.—INLAND LETTERS not exceeding half an ounce, are charged one penny.

Exceeding half an ounce, but not exceeding 1 ounce, twopence.
 " " " 2 ounces, fourpence.
 " " " 3 ounces, sixpence.

And so on an additional twopence for every additional ounce. With but few exceptions the weight is limited to 16 ounces. Unstamped Letters are charged double postage on delivery. Those insufficiently stamped, double the amount of such insufficiency.

COLONIAL LETTERS. If sent by packet, twelve times; if by private ship, eight times; the preceding rates, **FOREIGN LETTERS.** The packet rates are too various to be enumerated here. The ship rates are the same for Foreign as for Colonial Letters. As regards both Foreign and Colonial Letters, there is no limitation as to weight. All sent outwards, with few exceptions, must be prepaid by money, or by stamps; and those going by private ship must be marked "Ship Letter."

It is **REQUESTED** that all Letters may be fully and legibly addressed, and posted as early as convenient. Also that whatever kind of stamp may be used, it may invariably stand above the address, and towards the right hand side of the Letter.



POSTAGE

A 10

PRICES OF STAMPS.

At a **POST OFFICE.**—Labels, 1d. and 2d. each. Covers, 1d. and 2d. each.

At a **STAMP DISTRIBUTOR'S,** as above, or as follows:—

Half-ream, or 240 Penny Covers, L1. 2. 4.—Penny Envelopes, L1. 1. 9.

Quarter-ream, or 120 Twopenny Covers, L1. 1. 4.—Twopenny Envelopes, L1. 1. 1.

At the **STAMP OFFICES** in London, Dublin, and Edinburgh, as above, or as follows:—

2 Reams, or 960 Penny Covers, L4. 7. 0.—Penny Envelopes, L4. 5. 0.

1 Ream, or 480 Twopenny Covers, L4. 3. 6.—Twopenny Envelopes, L4. 2. 6.

Covers may be had at these Prices, either in Sheets, or out ready for use. Envelopes in Sheets only, and consequently not made up. No one, unless duly licensed, is authorized to **SELL** Postage Stamps.

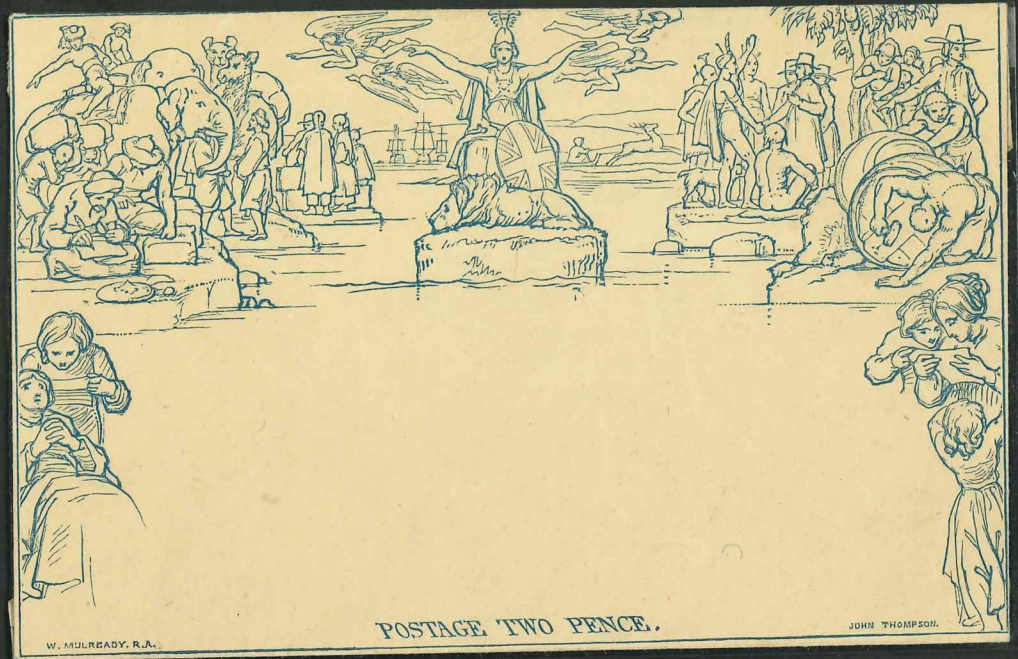
The Penny Stamp carries half an ounce (Inland), the Twopenny Stamp one ounce. For weights **EXCEEDING ONE OUNCE,** use the proper number of Labels, either alone, or in combination with the Stamps of the Covers or Envelopes.

MONEY. Coin, if enclosed in Letters at all, should be folded in paper, sealed, and then fastened to the inside of the Letter; but, to avoid risk, a money order should be used whenever practicable.

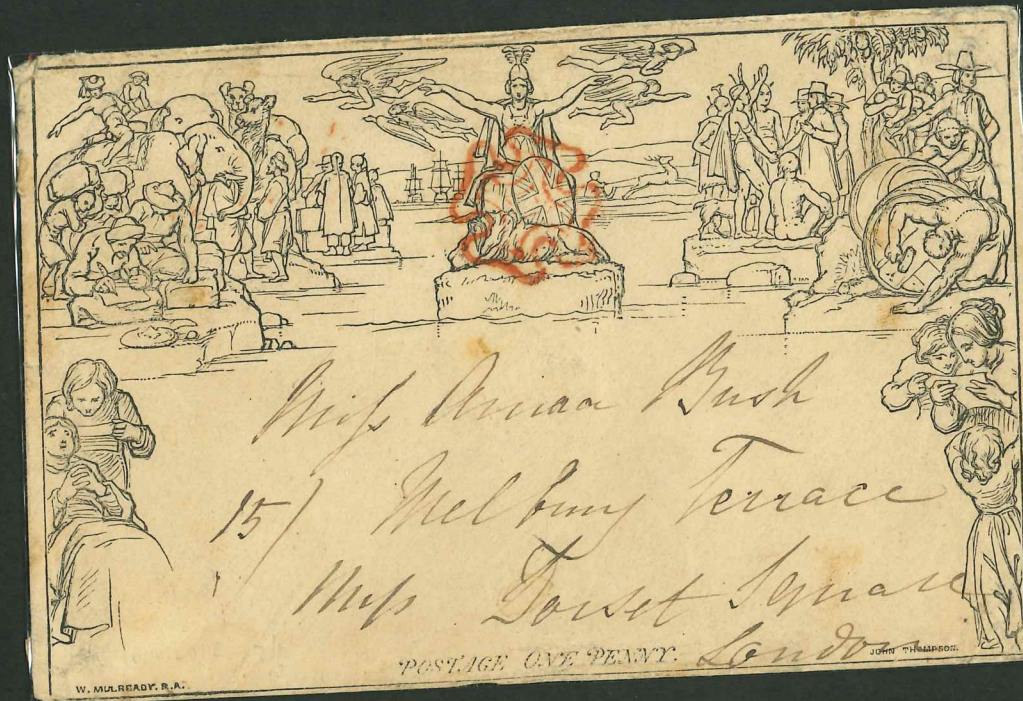


*S. C. Sharp Esq
Leeds
Friedland Street
Southampton*

POSTAGE ONE PENNY.



POSTAGE TWO PENCE.



*Miss Anna Bush
15/ Melbury Terrace
Miss Dorset Square
London*

POSTAGE ONE PENNY.



*Water Court
Miss Kathman
4 Greenway Lodge
Chatham Place
Rushmore Hill, York*

POSTAGE ONE PENNY.

Return in 5 Days
E. A. HOLTON,
FOREIGN POSTAGE STAMPS,
8 Summer Street, Boston, Mass.



E. A. HOLTON, Stamp Dealer,
8 Summer Street, Boston, Mass.

*Mr Harry L. Walker,
14 East Seneca St.
Buffalo, N. Y.*



