

St. Vincent

7 June 1889, 24th issue, (first invoicing)

Recess-printed by De La Rue

Watermarked 'Crown CA', perf. 14 line

6d milky blue overprinted '2 1/2 PENCE' and the original value obliterated by black bar, on sheets of 60 (10 x 6)

2 1/2d (49, 55, 55a) [36] black on milky blue
black on grey-blue
black on blue

15th consignment from DLR: 30.480 (508 sheets), 7 June 1889
17th consignment from DLR: 61.200 (1.020 sheets), 29 August 1890
22nd consignment from DLR: 30.420 (507 sheets), 2 June 1892
23rd consignment from DLR: 60.960 (1.016 sheets), 13 October 1893
24th consignment from DLR: 61.500 (1.025 sheets), 14 August 1894
25th consignment from DLR: 60.000 (1.000 sheets), 28 March 1895
28th consignment from DLR: 60.600 (1.100 sheets), 9 July 1896



2 1/2d black on milky blue (SG 49), grey-blue (SG 55) and blue (SG 55a)



28 October 1889, to Milwaukee (Wis., USA). A registered envelope, rated 8 pence, franked with a strip of three of the 2 1/2d milky blue (SG 49) of the very first issue of June 1889, and a single 1/2d green (SG 47). The letter was in transit at Trinidad on 4 November.

St. Vincent

7 June 1889, 24th issue, (first invoicing)

Recess-printed by De La Rue

Watermarked 'Crown CA', perf. 14 line

6d milky blue overprinted '2 1/2 PENCE' and the original value obliterated by black bar, on sheets of 60 (10 x 6)

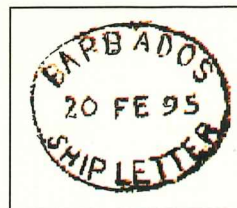
2 1/2d (49, 55, 55a) [36] black on milky blue
 black on grey-blue
 black on blue

15th consignment from DLR: 30.480 (508 sheets), 7 June 1889
 17th consignment from DLR: 61.200 (1.020 sheets), 29 August 1890
 22nd consignment from DLR: 30.420 (507 sheets), 2 June 1892
 23rd consignment from DLR: 60.960 (1.016 sheets), 13 October 1893
 24th consignment from DLR: 61.500 (1.025 sheets), 14 August 1894
 25th consignment from DLR: 60.000 (1.000 sheets), 28 March 1895
 28th consignment from DLR: 60.600 (1.100 sheets), 9 July 1896

**THE CONSIGNMENT OF OCTOBER 1893
 WAS THE FIRST CONTAINING BLUE STAMPS**



2 1/2d black on blue (SG 55a)



Handstamped at the back



18 February 1895, to Barbados, delivered the 20th. Rated 5 pence and franked with a pair of the 2 1/2d blue (SG 55a) of the August 1898 issue. Backstamped with the oval 'BARBADOS / SHIP LETTER'.

St. Vincent

7 June 1889, 24th issue, (first invoicing)

Recess-printed by De La Rue

Watermarked 'Crown CA', perf. 14 line

6d milky blue overprinted '2 1/2 PENCE' and the original value obliterated by black bar, on sheets of 60 (10 x 6)

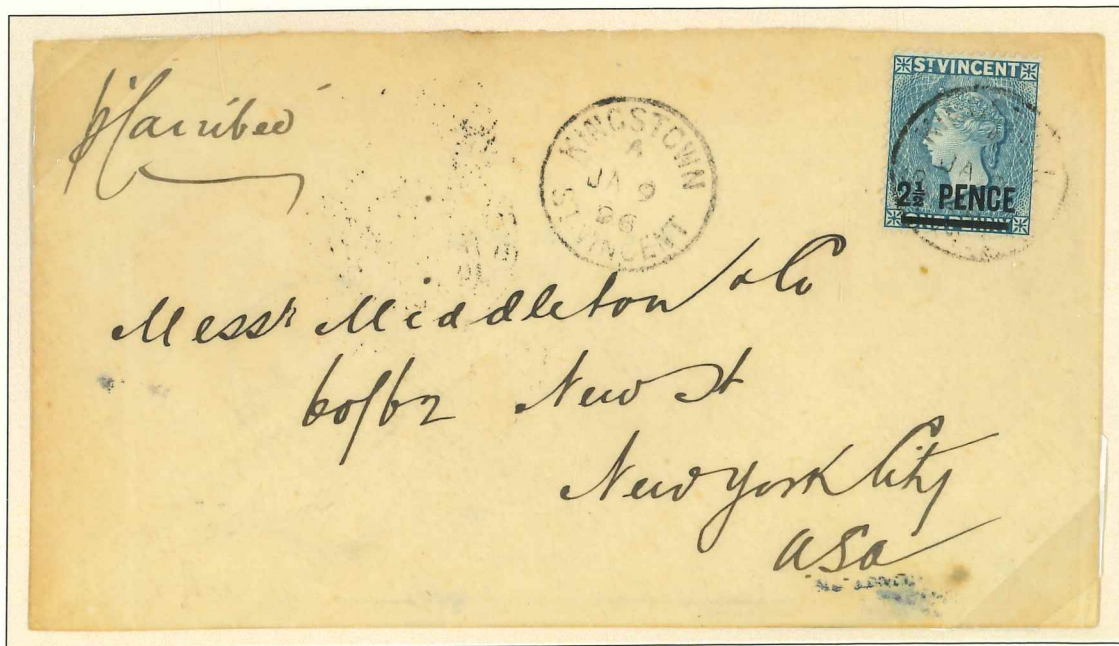
2 1/2d (49, 55, 55a) [36] black on milky blue
black on grey-blue
black on blue

15th consignment from DLR: 30.480 (508 sheets), 7 June 1889
17th consignment from DLR: 61.200 (1.020 sheets), 29 August 1890
22nd consignment from DLR: 30.420 (507 sheets), 2 June 1892
23rd consignment from DLR: 60.960 (1.016 sheets), 13 October 1893
24th consignment from DLR: 61.500 (1.025 sheets), 14 August 1894
25th consignment from DLR: 60.000 (1.000 sheets), 28 March 1895
28th consignment from DLR: 60.600 (1.100 sheets), 9 July 1896

This stamp, although surcharged is not a provisional like the 18th issue of January 1883



9 October 1894, to Paris, France. The 2 1/2d UPU rate was introduced in 1891 and lasted until 1898.



9 January 1896, to New York, USA, delivered the 25th.

St. Vincent

August 1890, 25th issue, 6th Provisional issue, (printed)

4d chocolate (SG 51a) surcharged locally '2 1/2d' and the original value obliterated by one bar
Pending the arrival of the 2 1/2d black on milky blue, 17th DLR consignment, invoiced on 29 August 1890

2 ½d (54) [37] chocolate 1.500 stamps overprinted (50 sheets)



2 ½d overprinted on 4d chocolate (SG 54)



9 July 1892, addressed locally, cancelled with Kingstown datestamp, with alongside a further St Vincent strike in red. Ex Seybold.

St. Vincent

23 June 1891, 26th issue, (first invoicing)

Recess-printed by De La Rue
Watermarked 'Crown CA', perf. 14 line
1s on sheets of 30 (10x3)

1s (58) [38] orange
red-orange

19th consignment from DLR: 1.560 (52 sheets), 23 June 1891
20th consignment from DLR: 3.000 (100 sheets), 2 June 1892
24th consignment from DLR: 1.500 (50 sheets), 14 August 1894
25th consignment from DLR: 6.000 (200 sheets), 28 March 1895
27th consignment from DLR: 12.000 (400 sheets), 25 December 1895
28th consignment from DLR: 6.000 (200 sheets), 9 July 1896
29th consignment from DLR: 15.150 (505 sheets), 16 November 1896



1s orange or red-orange (SG 58)



7 December 1895, to Baden Baden (Germany). A philatelic and expensive registered cover rated 5 shillings and frankend with two pairs and a single of the 5s orange (SG 58). Endorsed 'E. Conhuan (?) Louis, Colonial Postmaster of St. Vincent'.

St. Vincent

11 March 1893, 28th issue, (first invoicing)

Recess-printed by De La Rue

Watermarked 'Crown CA', perf. 14 line

4d on sheets of 30 (10x3), 6d carmine lake overprinted 'FIVE PENCE' in black, on sheets of 60 (10 x 6)

4d (56) [40] yellow

21st consignment from DLR: 3.000 (100 sheets), 11 March 1893
 22nd consignment from DLR: 6.000 (200 sheets), 17 August 1893
 23rd consignment from DLR: 4.000 (134 sheets), 13 October 1893
 24th consignment from DLR: 6.000 (200 sheets), 14 August 1894
 25th consignment from DLR: 6.000 (200 sheets), 28 March 1895
 27th consignment from DLR: 6.000 (200 sheets), 9 July 1896

5d (60) [41] black on carmine lake

21st consignment from DLR: 11.700 (195 sheets), 11 March 1893
 22nd consignment from DLR: 12.240 (204 sheets), 17 August 1893
 23rd consignment from DLR: 6.000 (100 sheets), 13 October 1893
 24th consignment from DLR: 6.000 (100 sheets), 14 August 1894
 25th consignment from DLR: 6.000 (100 sheets), 28 March 1895
 28th consignment from DLR: 12.000 (200 sheets), 9 July 1896



4d yellow (SG 56), 5d black on carmine lake (SG 60)



11 February 1899, to Leipzig (Germany). A philatelic registered envelope, rated 12 pence, franked with a single 4d yellow (SG 56), a single 3d mauve (SG 63), and a single 5d (SG 60).

St. Vincent

13 July 1897, 29th issue, (put in use at post office)

Recess-printed by De La Rue
Watermarked 'Crown CA', perf. 14 line
2 ½d and 4d, new steel plates of 60 (10 x 6)

2 ½d	(61)	[42]	blue	30th consignment from DLR: 121.200 (2.200 sheets), invoiced 25 June 1897
5d	(62)	[43]	sepia	30th consignment from DLR: 116.520 (1.942 sheets), invoiced 25 June 1897

For fifteen years, De La Rue had continued to use Perkins & Bacon plates. With this issue, for the first and last time, De La Rue was to make entirely new rollers, printing plates and steel dies. No subsequent printings of this issue were made.



2 ½d blue (SG 61), 5d sepia (SG 62)



14 December 1899, to Leicester (UK). A philatelic registered envelope, rated 15 pence, franked with a pair of the 2 ½d blue (SG 61) and a pair of the 5d sepia (SG 62).

St. Vincent

21 September 1897, 30th issue, (invoiced)

Recess-printed by De La Rue

Watermarked 'Crown CA', perf. 14 line

1d mauve overprinted 'THREE PENCE' over the original value, on sheets of 60 (10 x 6)

3d (63) [44] black on mauve 31st consignment from DLR: 120.000 (2.000 sheets), 21 September 1897

This issue provides to close the period of the Perkins & Bacon classical 'Queen' design, as well as rollers and plates



3d black on mauve (SG 63)



6 January 1898, to Croydon (U.K.). A philatelic registered cover rated 6 pence, and franked with two 3d black on mauve (SG 63), endorsed 'E. Conhuan (?) Louis, Colonial Postmaster', G.P.O. St. Vincent.

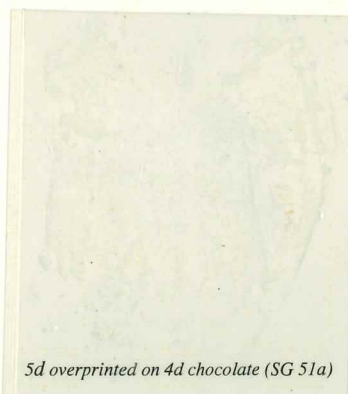
St. Vincent

November 1892, 27th issue, 7th Provisional issue, (printed)

4d chocolate (SG 51a) surcharged locally in purple '5 PENCE' and the original value obliterated by single bar
Pending the arrival of the new 5d denomination, black on carmine lake, 21st DLR consignment, invoiced on 11 March 1893

5d (59) [39] chocolate number of stamps overprinted not known

This Provisional has been done overcharging the 4d brown of the printing invoiced in June 1889, with a rather similar ink. This stamps was suspect from the start, most probably this issue having been done only for philatelists.



5d overprinted on 4d chocolate (SG 51a)



6 October 1893, to Birmingham. A registered envelope, rated 9 pence, franked with a single 4d yellow (SG 56) and a single 5d Provisional (SG 59).