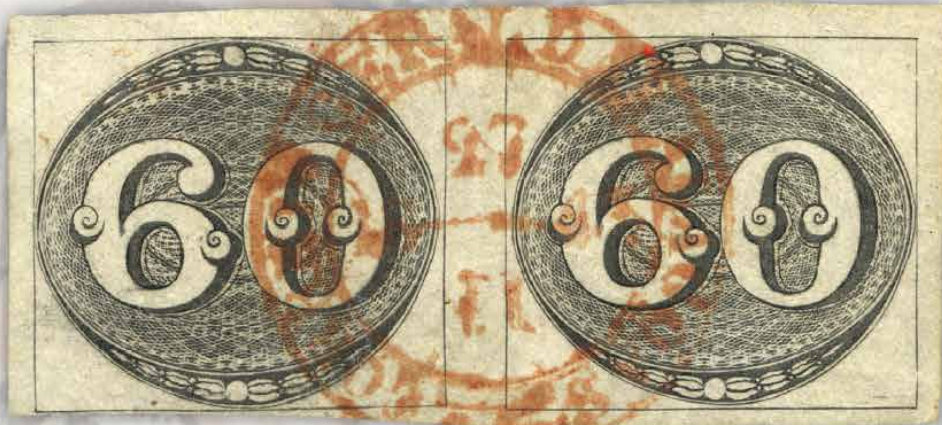




David Feldman
INTERNATIONAL AUCTIONEERS



Brazil

The Silvio Canani Collection of Cancellations on Bull's Eyes

Wednesday, May 28, 2025 at 17:00 CET



Brazil

The Silvio Canani Collection of Cancellations on Bull's Eyes

May 28, 2025 at 17:00 CET

Everness Hotel & Resort
Chavannes-de-Bogis, Vaud, Switzerland



David Feldman
INTERNATIONAL AUCTIONEERS

© 2025 David Feldman SA
All rights reserved

All content of this catalogue, such as text, images and their arrangement, is the property of David Feldman SA, and is protected by international copyright laws.

Printed in the UK by Pardy & Son Printers Ltd.

Cover images: front, lot 60014; back, lots 60235, 60155 & 60053

Colour and size disclaimer. We strive to present the lots in this catalogue as accurately as possible. Nevertheless, due to limitations of digital scanners, digital photography, and unintentional variations on the offset printing presses, we cannot guarantee that the colours you see printed are an exact reproduction of the actual item. Although variations are minimal, the images presented herein are intended as a guide only and should not be regarded as absolutely correct. All colours are approximations of actual colours. Images sizes may also be different from the actual sizes of the items.



David Feldman
INTERNATIONAL AUCTIONEERS



We strive for excellence

and we go the extra mile for our consignors

Contact us to discuss your consignment
to our auctions at info@davidfeldman.com



Spring Auction Series

May 26-June 1, 2025



David Feldman
International Auctioneers

Chemin du Pavillon 2
1218 Le Grand-Saconnex
Geneva, Switzerland

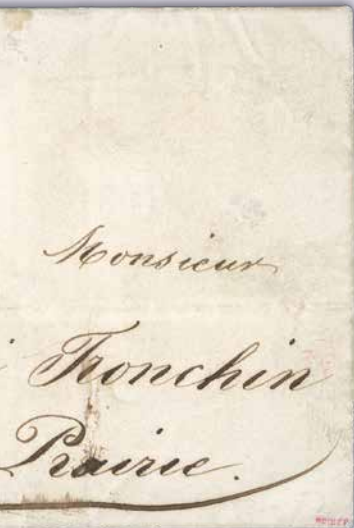
Phone & WhatsApp +41 22 727 0777
Email info@davidfeldman.com

Discover a carefully curated selection of world-class philately, broad in geography, rich in material and high in philatelic value!

From seasoned collectors to new enthusiasts, this auction series offers something for every level of interest and ambition.



www.davidfeldman.com



- **Austria**, the “Ing. Karl Korn Collections of mint Austria 1850-1938”.
- **Brazil**, the “Silvio Canani Collection of Bull’s Eyes”.
- **British Empire**, including Ireland, with the “Bokhara Collection of Postal History, Stamps, Revenues, etc.” (Part I) and the “Cousins Collection of Overprints” (Part IV); South West Africa, Turks & Caicos, St Vincent and Niger Coast.
- **Egypt**, including Stampless Mail and Postal History, First, Second and Third Issues, Kings Fouad & Farouk, Commemoratives and other issues.
- **Europe, Overseas and All World Collections**, including rarities from across the globe.
- **France and Colonies**, with an impressive selection of covers and stamps.
- **Great Britain**, from Mulreadys and Penny Blacks to QEII Machin and modern errors.
- **India & Indian States**, featuring the “Röver Collection of Indian States”.
- **Switzerland**, with a great selection of covers and stamps, from cantonals to modern.

Auction Bidding Options

There are several ways to bid in our auctions (if you cannot attend in person). Bids can be made by email, telephone, and through our Web site.

Written Bid Form

You are invited to bid before the auction, using the bid forms enclosed with the catalogue.

- Write down the lot numbers of interest to you and your bids on them
- Complete your personal information
- Sign the form on the last page of this catalogue and send it either:
 - by email: info@davidfeldman.com
 - by post: David Feldman SA,
PO Box 29, Chemin du Pavillon 2
1218 Le Grand-Saconnex, Geneva, Switzerland

Bids initially made by telephone must be supported by written confirmation by post prior to the sale.

Phone Bids During the Auction

If you wish to bid by phone, you should confirm in writing 48 hours before the auction indicating the lot numbers you wish to bid on and phone number(s) where you can be reached during the auction. Due to the availability of multiple other bidding options, telephone bidding is accepted at the discretion of David Feldman SA. One of our philatelists will call you a few lots in advance of your first lot of interest, and bid for you directly during the auction.

Online Bidding

Participate in any David Feldman auction from the comfort of your home, office, or while travelling.

New Clients

If you are a new client, please follow these steps to save your pre-auction bids and/or create a live bidding account.

- Select "My Account" on www.davidfeldman.com and follow the steps to create your personal account
- During the account creation process you will be sent a request to complete a new client registration form, where you will be asked to confirm your contact details and provide credit references and proof of identity.

Pre-Auction Bidding

Once your details have been confirmed, you will then be able to enter any bids in advance of the auction via our web site.

- Log-in to your account
- Browse the auction lots to find those items that interest you
- Enter the maximum amount you want to bid for any lot
- Click the "Bid" button
- Repeat for each desired lot
- Monitor your bids to see if you have been outbid

Live Auction Bidding

You may also bid live in any of our auctions via the Internet. Follow your targeted lots on screen and enter your bids with the confidence that you will be bidding as if you were in the auction room itself.

- Click on the "Live Auction" button on the home page
- Log-in to the auction
- Follow the auction and click the "Bid" button to register your bid with the auction
- Defend your bid(s) as needed

Reminder. These are the instructions for existing clients who have already made auction bids with us using existing credentials. If you are a new client, or an existing client who has not bid via the internet before, please ensure that you create your account **at least 48 hours before the auction** and ensure that you provide us with the information requested during this process without delay.



Auction Agenda

Spring Auction Series – May 26-June 1

DATE	TIME (CET)	CATALOGUE	CURRENCY
Monday, May 26	10:00	Austria	CHF
	14:00	Europe* (I - Austria-Portugal)	CHF
Tuesday, May 27	9:00	Europe (II - Romania-Yugoslavia) & All World Collections*	CHF
	14:00	France	EUR
Wednesday, May 28	9:00	French Colonies	EUR
	14:00	Switzerland	CHF
	17:00	Brazil	CHF
Thursday, May 29	10:00	British Empire	GBP
Friday, May 30	10:00	Great Britain	GBP
	15:00	India & Indian States	GBP
Saturday, May 31	10:00	Greece & Ionian Islands*	CHF
	14:00	Egypt	CHF
Sunday, June 1	10:00	Overseas & Thematics*	CHF

* These sections are part of the Europe, Overseas & All World collections catalogue.

The auction will take place at the **Everness Hotel & Resort**
Les Champs-Blancs 70b, 1279 Chavannes-de-Bogis, Vaud, Switzerland

Auction Bidding Agents

Commissionnaires / Kommissionäre

David Feldman SA is pleased to handle your bids, representing you as if you were present in the auction room.

However, if you would like to be represented by a professional bidding agent, we list below a number of persons who regularly bid at our sales on behalf of clients.

David Feldman SA prend soin de vos offres lui parvenant directement et vous représente au mieux de vos intérêts comme si vous étiez dans la salle des ventes.

Dans le cas où vous préféreriez néanmoins passer par un commissionnaire, nous listons ci-après certaines personnes prenant régulièrement part à nos ventes en représentant des acheteurs.

David Feldman SA ist gerne bereit, Ihre Gebote so zu vertreten, als wären Sie selbst im Auktionssaal anwesend.

Wenn Sie jedoch von einem professionellen Bietagenten repräsentiert werden möchten, finden Sie unten eine Liste von Personen, die regelmäßig bei unseren Auktionen im Namen von Kunden mitbieten.

Germany

Jochen Heddergott **Tel** +49 89 272 1683
Mobile +49 151 4040 9090
Email jh@philagent.com

Lorenz Kirchheim **Tel** +49 40 645 32 545
Email lorenz.kirchheim@t-online.de

Great Britain

Trevor Chinery **Tel** +44 7527444825
Auction Agency **Email** trevortrilo@aol.com
Website philatelic-auction-agent.co.uk

Nick Martin **Mobile** +44 770 376 6477
Email nick@martinlincs.uk
Website loveauctions.co.uk

Italy

Giacomo Bottacchi **Mobile** +39 347 -922 0225
Email gbstamps@iol.it

USA

Charles E. Cwiakala **Tel** +1 847 823 8747
Email cecwiakala@aol.com

Purser & Associates **Tel** +1 857 928 5140
Email info@pursers.com

Frank Mandel **Mobile** +1 718 873 5702
Email earlybird1@me.com



David Feldman
International Auctioneers

Chemin du Pavillon 2
1218 Le Grand-Saconnex
Geneva, Switzerland

Phone & WhatsApp +41 22 727 0777
Email info@davidfeldman.com



Payment Instructions

Instructions de Paiement / Zahlungsanweisungen

Bank Transfer / Transfert Bancaire / Banküberweisung

Credit Suisse - 8 Paradeplatz, Zürich 8070, Switzerland

Swiss Francs (CHF)

Account 0316-398878-81
IBAN CH02 0483 5039 8878 8100 0
Swift / BIC CRESCHZZ80A
Beneficiary David Feldman SA

US Dollars (USD)

Account 0316-398878-82
Iban CH65 0483 5039 8878 8200 0
Swift / BIC CRESCHZZ80A
Beneficiary David Feldman SA

Euros (EUR)

Account 0316-398878-82-3
IBAN CH81 0483 5039 8878 8200 3
Swift / BIC CRESCHZZ80A
Beneficiary David Feldman SA

British Pounds (GBP)

Account 0316-398878-82-4
Iban CH54 0483 5039 8878 8200 4
Swift / BIC CRESCHZZ80A
Beneficiary David Feldman SA



Many clients have found the option of paying by Wise Payments (www.wise.com) both cost efficient and timely. We highly recommend this option for those clients unable to pay by bank transfer.

Credit card / Carte de crédit / Kreditkarte

Accepted credit cards

For invoices of less than CHF / EUR / USD / GBP 2'000

- Visa
- MasterCard
- American Express (charges made in CHF only)

Please note that all credit card payment will incur an additional charge of 3% plus possible other fees, such as £10 standard fees on GBP payments. Please also note that credit card payments usually take 10-20 working days to be credited to our account and if you pay in this manner, we kindly request your patience.

Please note that we are unable to accept payment by cheque. We kindly ask clients to use one of our other accepted payment methods. Thank you for your understanding.



Our Team

DIRECTION



Joel Feldman
Managing Director



David Feldman
Founder &
Director Emeritus



Nalis Feldman
Head of Administration
and Human Resources

PHILATELY

Geneva



Ricky Verra
Director of Philately
(Great Britain, British
Empire, Asia, Olympics)



Allan Westphall, PhD
Senior Philatelist
(Europe Classics, Dutch
Colonies, Scandinavia)

Ireland



Marcus Orsi
Director Emeritus
(Middle East, Ireland,
Europe, Americas)

United Kingdom



Guy Croton
Senior Philatelist & Rep. UK
(Great Britain, British
Empire)



Robert Murray
Rep. Scotland
(All World stamps &
collections)



Tony Banwell
Rep. UK
(China, Great Britain, Asian
Stamps & Postal History)

Portugal



Antonio Guerreiro
Rep. Portugal, Spain &
Latin America
(Portugal & Colonies)

France



Andrea Diano
Senior Philatelist &
Head of France
(France & Colonies)



Jean-Roger Bardeau
Senior Philatelist
(France & Colonies, All
World Collections)



François Roullier
Senior Philatelist
(France & Colonies)



Jean-Luc Klein
Senior Philatelist
(France, Germany &
Possessions)



Derrick Mitchel
Rep. Caribbean
(West Indies)

Caribbean

India



Markand Dave
Rep. India
(India, Airmails)

United States



Dr. Vivek Chopra
Head of USA
(India & Indian States)



Bruce Weinman
Rep. East Coast
(United States)



W. Danforth Walker
Ambassador USA
(Indian States)



CONSULTANTS

Gary Dubro	USA
Tim Francis	UK
David MacDonnell	Ireland
Philip Newby	UK
Michael Tseriotis	Greece
Michael Vojta	Austria

AGENTS

Jorge Del Mazo	Argentine
Carlos Hernández Rocha	Uruguay
Bill Schultz	Canada & USA
Jean-Jacques Tillard	International
Pierre Wertheimer	International

LOGISTICS + CLIENT SERVICE



Steve Bodenne
Head of Logistics



Rodolfo Nascimento
Logistics Assistant



Ratsamee Feldman
Special Projects



Riccardo Bassi
Administration &
Client Service



Nida Delplanque
Administration &
Client Service

CREATIVE HUB (MARKETING + IT)



Alex Porter
Head of Marketing &
Senior Graphic Designer



Eva Mondehard
Marketing Coordinator



Francesco Baita
Head of IT & Senior
Multimedia Creator



David Feldman
International Auctioneers

Chemin du Pavillon 2
1218 Le Grand-Saconnex
Geneva, Switzerland

Phone & WhatsApp +41 22 727 0777
Email info@davidfeldman.com



www.davidfeldman.com

Feldman

INTERNATIONAL AUCTIONS SINCE 1967

PRESENTS

Vikramm Chand's

The Silk Road Collection II



Resuming our
numismatic
journey along
the ancient
Euro-Asian
trading routes

June 18, 2025



www.feldmanauctions.com

A project by:





Meet our Philatelists!

We will be present at the following shows in 2025:

- 7-11 May – Europhilex, Birmingham, United Kingdom
- 14-17 May – Bernaba, Bern, Switzerland
- 6-8 June – Napex, McLean, VA, United States
- 6-9 June – Phila-France Colmar 2025, Colmar, France
- 18-19 July – York Stamp & Coin Fair, York, United Kingdom
- 8-12 August – Thailand 2025, Bangkok, Thailand
- 14-17 August – GASS, Schaumburg, IL, United States
- 17-21 September – Philakorea 2025, Seoul, South Korea
- 22-25 October – Stampex, London, United Kingdom
- 23-25 October – Internationale Briefmarken-Börse, Ulm, Germany
- 23-30 May, 2026, Boston 2026 World Expo, United States



In addition to personally meeting our multilingual, expert philatelists and chatting with them, at our stand at any exhibition, you can benefit from:

- Getting an appraisal of your stamps without any commitment on your part
- Advice on buying and selling your collection or any philatelic item
- Getting to know the terms and conditions of our auctions and Private Treaty options
- General information about the hobby of stamp collecting or a particular collecting interest
- Viewing and taking home catalogues of our upcoming auctions
- Potential viewing of lots of our upcoming auctions



Viewing

Before May 25, 2025
(by appointment)

**David Feldman
International Auctioneers**

Chemin du Pavillon 2
1218 Le Grand-Saconnex
Geneva, Switzerland

Book an appointment:
+41 (0) 22 727 0777
info@davidfeldman.com

May 26-June 1, 2025

Everness Hotel & Resort

Les Champs-Blancs 70b
1279 Chavannes-de-Bogis
Vaud, Switzerland

Just a 10-minute drive from
our headquarters in Geneva.

From 9am to 7pm daily.
Viewing of lots on weekends
or evenings can be arranged.



**Your first night at the
Everness is on us!**

When you come to Switzerland for viewing,
your first night's stay at the Everness Hotel
& Resort will be paid by us.

Please, contact us before booking.



**David Feldman
International Auctioneers**

Chemin du Pavillon 2
1218 Le Grand-Saconnex
Geneva, Switzerland

Phone & WhatsApp +41 22 727 0777
Email info@davidfeldman.com



www.davidfeldman.com

Introduction

Dear Collector and Client,

It gives us enormous pleasure to bring to the market the The Silvio Canani Collection of Cancellations on Bull's Eyes, which has been carefully curated over a lifetime with many of the examples not seen in decades. It features nearly 300 lots and includes some of the rarest cancellations recorded on the Bull's Eyes.

We start with a very rare 60r used on the first day of issue, and after some regular stamps, we commence with the cancellations ordered alphabetically from Airuoca to Ytu. There are cancels from over 160 post offices, including manuscript cancels, straight-line cancels, circular cancels, ornate cancels, and a few rare coloured cancels including the stunning Villa de Lorena in vivid apple-green.

I'd like to thank those involved in producing this catalogue, including Antonio Guerriero, our regional agent for Portugal, Spain and South America and Philip Newby.

This work also wouldn't have been possible without Henrique Bunselmeyer Ferreira's *Catálogo ilustrado dos carimbos sobre os olhos-de-boi*, which is a must-have reference for a Bull's Eye collector. We hope this catalogue will be an important companion with his catalogue for collectors for many years to come.

The David Feldman team strives for excellence in the lotting and promotion of every property entrusted to us, and to present them in a catalogue worthy of our clients' philatelic treasures. We wish you success with your bids and satisfaction with your purchases.

Ricky Verra
Director of Philately

Geneva, April 2025





Brazil

The Silvio Canani Collection of Cancellations on Bull's Eyes



Silvio Canani (born in 1946 in São Francisco de Paula) is one of the most important philatelists in Brazil. A retired judge and attorney at law, he began collecting stamps at the age of 14.

For the last decades he has devoted himself to rare and unusual cancellations from Brazil's Empire period (particularly Bull's Eyes), which he has researched with great attention to detail and meticulously collected over the years.

Mr. Canani is also an environmentalist and the founder of one of the oldest NGOs in the State of Rio Grande do Sul, having advised the government of his native state on new legislation for the conservation of forests.

Note: All the illustrations of cancellations in this catalogue are taken from *Catálogo ilustrado dos carimbos sobre os olhos-de-boi*, by Henrique Bunselmeyer Ferreira.



Brazil May 28, 2025 at 17:00 CET

1843 Bull's Eyes



60000



7'500 - 15'000

1843 60r, four close to large margins showing large part unframed Corte (Correio Geral Da) date stamp (Ayres 1185) with clear date of 1/8 1843, the **first day of issue**, some inconsequential paper staining.



60001



500 - 600

1843 30r. black, early impression, thick white paper, a vertical corner marginal pair used with central unclear cancel, fine deep colour, large to huge margins, signed A. Diena.

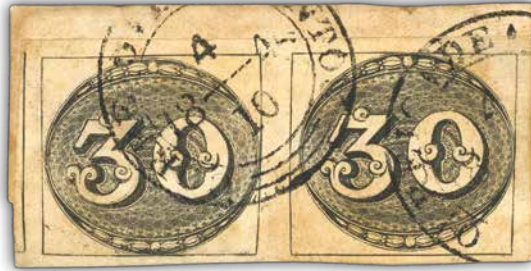


60002



500 - 600

1843 30r. black, four good even margins showing bold pre printing paper fold, fresh used with part double oval cancellation, Georg Bühler handstamp on reverse.



60003

△ ⊙

400 - 500

1843 30r. early impression horizontal pair on piece, close to large margins tied part cancels with toning to stamps and piece.



60004

⊙

400 - 600

1843 60r. black, early impression showing pre-printing paper fold across the stamp at top, four good to large margins with full dividing line at right, used with part double-ring date stamp, Brutus and Schmidt handstamps on reverse.



60005



60006

60005

⊙

200 - 300

1843 60r. black worn impression, thick paper with good to large margins showing top portion of stamp below, cancelled with part of two double-ring date stamps.

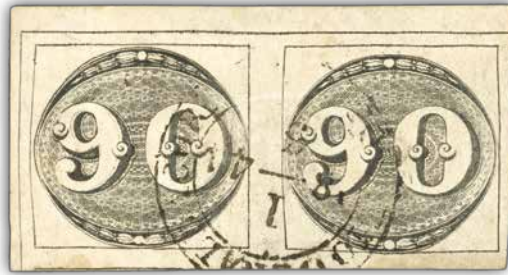
60006

⊙

150 - 200

1843 60r. black early impression on thick yellowish paper, four good margins, complete dividing line at left, black postmark ink in bottom right corner otherwise good, used with large part double-ring cancel.

You can view our catalogues and bid during the auction
via our website at www.davidfeldman.com



60007

⊙

900 - 1'000

1843 90r. intermediate printing, thick white paper in horizontal pair from top left of sheet showing outer frame line at top and at left used with single double-ring date stamp, ironed-out vertical crease through left-hand stamp and some slight paper tones.



60008

⊙

600 - 1'000

1843 90r. black showing parallel paper fold flaws at top of stamp, four close to good margins, some slight ageing, unusual on this value.



60009

⊙

500 - 600

1843 90r. black left-hand marginal with good to large margins and with significant part of adjoining stamp at right, fresh used with part Correio Geral Da (Corte) date stamp (Ayres 1608), fine condition.



60010

⊙

400 - 500

1843 90r. black used with good even margins cancelled large part framed horizontal handstamp, some slight paper toning on reverse.

Cancellations (ordered alphabetically)



60011



1'000 - 1'500

Manuscript: an accumulation with pen cross on 60r, a dated example of 1845 illustrated in Ferreira page 235, 90r. with four good margins and dividing line at bottom with part Caetete handstamp and manuscript date, 60r. without much margins large part Pera manuscript, 30r. with rare Goaratingueta, 30r. with part Maroim and further 30r. with part Pouzo, some slightly mixed condition.



60012



60013

60012



600 - 800

Airuoca (MG). 1843 30r. black, four close to good margins, used with part black manuscript, small stain at top left, fine and rare, the illustrated example in H. Ferreira (page 215).

60013



1'500 - 2'000

Airuoca (MG). 30r. black early impression vertical pair, good to large margins, with dividing line at base used with full handstamp running from top to bottom (Ayres 1126), fine and rare, the illustrated example in H.Ferreira (page 4).



60014



1'000 - 1'200

Alagoas (AL): 60r. black, good to close margins (at bottom left) horizontal pair showing virtually full vermilion date stamp, fine and fresh, Ayres 1604, illustrated H. Ferreira (page 6).



60015



600 - 800

Alagoas (AL): 90r. black, worn impression, four good to large margins with full dividing line at base, used with part Correio Geral Das Alagoas date stamp of 7/3 1845, Ayres 1604.



60016



1'000 - 1'200

Alcantara (MA) 30r. black, worn impression four close to good margins cancelled by part red Correio De Alcantara date stamp, Richter and R.R.Engel backstamps, unlisted in Ayres, unpriced RHM.



60017



2'600 - 5'000

Aldeia Da Pedro (RJ): 1840s outer letter sheet franked on reverse with horizontal pair worn impression 30r. tied and cancelled by full single handstamp. The right hand stamp badly damaged at base on opening and left hand stamp vertical filing crease, also some toning. Ayres 1192. A unique item not listed Bernt Juchert (2015).



60018

⊙

700 - 900

Aldeia De S. Pedro (RJ) 1843 60r. black early impression, four good even margins used with very large part three-line framed handstamp in dark brown to maroon, very fine, Ayres 1193.



60019

⊙

120 - 200

Alegre: 1843 60r. black intermediate impression, thin paper with four even margins cancelled part double-ring Alegre date stamp.



60020



60021

60020

⊙

400 - 600

Angra Dos Reis (RJ): 60r. black early impression with four even margins showing outer frame line at left and base cancelled by part brownish handstamp, fine and fresh with Bopp and pencil signature, Ayres 1200.

60021

⊙

400 - 500

Angra dos Reis (RJ): 1843 60r. black, worn impression, four even margins used large part red oval handstamp, A Diena and Bolaffi handstamps, Ayres 1200.

ANGRA DOS REIS
DAS ILHAS



60022

⊙

2'600 - 5'000

Angra Dos Reis / Das lhas (RJ): 1843 60r. black, early impression, four even margins used part two-line handstamp at right edge, some re-inking, unlisted in Ayres, believed to be the only example, ex Alemany (2013), lot 228 (unique).

AOL



60023



1'000 - 2'000

AOL: 1843 30r. black with close to touched margins cancelled by a full bluish green framed central handstamp, a very rare colour for Bulls Eyes, illustrated Ferreira page 11.

ARACATI



60024



600 - 900

Aracati (Ceara): 1843 60r. black, four good to large margins with full dividing line visible at top, cancelled by complete dark brown/maroon straight-line handstamp, various pencil initials on reverse, illustrated Ferreira page 11.



60025

ARARA



60026

60025



400 - 600

Arara (PI): 1843 early impression 30r. black, close to good margins, bearing very large part unframed black handstamp reading upwards, some slight toning not unduly distracting, unlisted in Ayres or RHM, but in Ferreira who suggests it is possibly a very worn handstamp that lost the outer frame, illustrated by him on page 13.

60026



260 - 400

Arara (PI) 1843 60r. black four even margins used with very large part dark brown/maroon handstamp, small rust spot at bottom left with small 2mm tear there, Ayres 1204, unpriced RHM for 60r.

ARARUAMA



60027



60 - 100

Araruama (RJ): 1843 60r. black worn impression, four close margins with faults at top and base used with large part framed handstamp, a very rare cancel, Ayres 1204.



60028

⊙

400 - 600

Va. De Areias (SP): 90r. black with four good to large margins with full dividing line at base used with part blue ornate framed handstamp, some staining at top on front, Calves backstamp, Ayres 1523.



60029

△ ⊙

60 - 100

Correio Da Villa De Areias (SP): 60r. black used on piece with full vermilion cancel with date 30/8/1845 added in manuscript, a very rare cancel in poor condition with no margin at base and tear at lower left, Ayres 1593.



60030



60031

60030

⊙

260 - 400

Arrozal (RJ): 30r. black, four good to large margins showing full dividing line at right, used with part framed manuscript, overall toning, paper thins and small cut at bottom centre, the only recorded example on this value, illustrated page 216 of Ferreira.

60031

⊙

260 - 400

Arrozal (RJ): 60r. black, four good even margins cancelled by part framed handstamp, upside down, small paper thinning at top and heavy inking to both 'R', scarce.

Please ensure your bids arrive on time!

In the case of equal bids, the first bid received will take precedence.

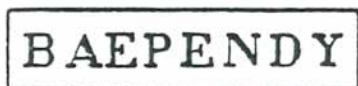


60032



500 - 600

Atibaia (SP) 30r. black, worn impression, good to large margins used with large part handstamp bottom left and a further different date stamp at right in transit or arrival, slight thinning at top right in margin, Ayres 1214.



60033



500 - 600

Baependy (MG): 60r. black clear to touched margin at left used with part bold vermilion handstamp, part of unclear black cancel at top right, small thin in top margin, unique in this colour, as illustrated in Ferreira page 22.



60034



600 - 1'000

Bagé (RS): 60r. black early impression, four good margins showing large part straight-line unframed handstamp, unlisted in Ayres or RHM and listed and illustrated in Ferreira as unique, page 23.

BAHIA.



60035



600 - 800

Bahia: 60r. early impression horizontal, left-hand marginal pair, margin close at bottom right otherwise good to huge with single straight line handstamp at centre (Ayres 1129), some slight toning at top not unduly detracting.



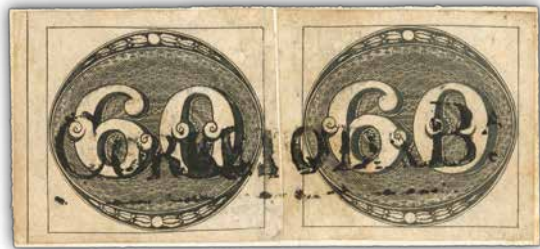
60036



600 - 800

Bahia: 60r. black early impression vertical pair, good to large margins with full dividing line at top used with two strikes of **Correio Gral Da Bahia** without dates (Ayres 1556), some slight ageing.

CORREIO DA B.^A



60037



500 - 600

Bahia (Correio Da Ba): 60r. black, early impression, two single stamps, good to large margins, full dividing line at left, showing complete framed handstamp (Ayres 1130), some slight ageing not detracting from rare example of a complete cancel.



60038



60039

60038



400 - 500

Bahia: 60r., four good to large margins, a fine intense colour with about half of a further example to left cancelled by full **Correio Da Bahia** date stamp (Ayres 1605), Schiffer handstamp on back.

60039



260 - 400

Bahia: 60r. early impression re-joined vertical pair, four margins cancelled by large part **Correio Da Bahia** double-ring date stamp (Ayres 1605). The pair roughly separated and rejoined.



60040



400 - 600

Bahia: 60r. black, four close to large margins showing complete manuscript *Bahia 11 de maio de 1844* and with part framed SERGIPE handstamp in transit, as illustrated in Ferreira page 216.



60041



60042

60041



700 - 1'000

Bananal (SP): 30r. greyish-black, four margins used very large part framed handstamp reading upwards (Ayres 1227), slight ageing and small top right corner crease, **only two recorded examples.**

60042



600 - 800

Bananal (SP): 60r. black with four good even margins used large part framed handstamp across centre of stamp (Ayres 1227).



60043



600 - 800

Barbacena (MG): 60r. early impression, four good margins with full dividing line above used with part unframed handstamp, illustrated in Ferreira page 27 where suggested lack of frame could be due to wear, unlisted in Ayres, seven examples recorded with the framed handstamp.

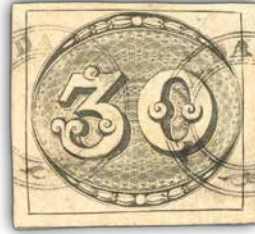


60044



260 - 400

Barbacena (MG): 30r. black early impression, four good even margins used with right-hand part of oval handstamp (Ayres 1228), fine appearance.



60045



1'000 - 1'200

Barra, Villa Da (SP): 30r. grey-black four good even margins used with parts of two small undated double ringed handstamps, slight thinning at top and ink stain at bottom on reverse, unlisted in Ayres or RHM, illustrated in Ferreira page 28, only two Bulls Eyes recorded, this being the only 30r. known.



60046



60047

60046



1'300 - 1'500

Barra De S. Joao (RJ): 90r. black, four close even margins used part handstamp in red (Ayres 1232) in its first state showing frame line as a series of small vertical lines, this example illustrated in Ferreira, page 28, some very slight paper thinning at base of little consequence, a very rare colour cancel on this value.

60047



600 - 800

Barra De S. Joao (RJ): 60r. grey-black worn impression, four good even margins used with good part oval framed blue handstamp (Ayres 1232) in its first state showing outer oval in a series of separate lines, small spot on front otherwise fine, a rare colour cancel on a Bulls Eye, one of eight recorded examples on the 60r.



60048



60049

60048



600 - 800

Barra Manca (RJ): 30r. greyish black worn impression, four good to close margins used with part framed brownish handstamp reading upwards (Ayres 1230).

60049



260 - 400

Barra Manca (RJ): 30r. black early impression, four good to close margins cancelled by brownish framed handstamp running vertically downwards (Ayres 1230), tiny pin hole at top of '3'.

The currency of the auction is the Swiss franc.

CHF

BARREIRO



60050



260 - 400

Barreiro (SP): 60r. black early impression, four good to close margins cancelled with part framed upside down handstamp (Ayes 1233), small repair of top margin.

BRAGANSA



60051



1'300 - 1'500

Bragansa (SP): 30r. black vertical pair with close to large margins, with parts of dividing line visible at base, cancelled with full brown handstamp reading up and partial 'ANSA' horizontally (Ayes 1244), illustrated Ferreira page 32. Fine and desirable example.



60052



60053

CABO
FRIO



60054

60052



1'500 - 2'000

Cabo Frio (RJ): 90r. black, four large even margins cancelled by large part brown handstamp reading up (Ayes 1248), a fine desirable example on this value.

60053



1'500 - 2'000

Cabo Frio (RJ): 90r. black, thick paper, four good even margins, used with large part framed cancel in blue (Ayes 1248), as illustrated in Ferreira page 34, fine and extremely rare.

60054



400 - 500

Cabo Frio (RJ): 60r. grey-black, four good even margins cancelled part bold framed handstamp (Ayes 1248) plus an indistinct cds, fine clean condition.



60055

CACHOEIRA



60056

60055



400 - 600

Cachoeira (BA) 60r. black worn impression, four even margins used with part brownish handstamp at base (Ayres 1131), this example illustrated in Ferreira page 55, some ink lines at top otherwise sound.

60056



260 - 400

Cachoeira (BA): 90r. grey-black, four good even margins used with part two horizontal brown handstamps (Ayres 1131), the status of these cancels are in some doubt, as discussed in Ferreira.



60057



120 - 200

Cachoeira (BA, CE or RS): 60r. black large part manuscript cancel. Of uncertain origin as there were agencies with the same name in provinces Bahia, Ceara and San Pedro. The stamp badly damaged at bottom left and crudely repaired, an important reference piece.



60058



120 - 200

Cachoeira do Marajo (PA): 60r. black early impression, four even margins used with abbreviated manuscript, some pen marks at top and central horizontal fold.



60059



600 - 1000

Caera: 60r. four good even margins used with large part red handstamp (Ayres 1274) and at bottom left two letters of a straight-line handstamp, a striking colour handstamp.



60060



1'000 - 1'200

Caetete, Villa De (BA): 90r. grey-black worn impression, four close to large margins used with large part two handstamps without any dates, unlisted Ayres or RHM, listed and illustrated Ferreira page 36, probably unique on a 90r.

V.D.CAETHE



60061



260 - 400

V.D.Caethe (MG): 60r. black early impression, four good to close margins used with part straight-line handstamp, stamp repaired with new top across whole design, the cancel unrecorded in Ayres or RHM, but this example illustrated in Ferreira, probably unique.

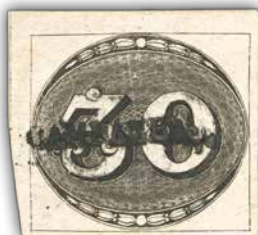


60062



1'500 - 2'000

Campanha (MG): 90r. black early impression, top right corner marginal with full dividing lines at top and right cancelled with two strikes of small brown straight-line handstamp, unlisted in Ayres, the only known example of a 90r.



60063



400 - 500

Campanha (MG): 30r. black early impression, four clear to large margins with part dividing line at left before the margin slopes in close to corner, complete strike, small tear at bottom right, this example illustrated in Ferreira.



60064



260 - 400

Campinas (SP): 60r. black four even margins with full dividing line at top cancelled with large part handstamp (Ayres 1565), small repaired tear at base, otherwise fine and attractive.



60065



120 - 200

Campinas (SP): 60r. grey-black, four close margins used with large part handstamp in brown (Ayres 1565), heavy central vertical crease creating breaks in paper, still of fine appearance.

CAMPO MAIOR



60066



1'000 - 1'500

Campo Maior: 60r. grey-black, four even margins used with part upside-down handstamp 'CAMPO M', other manuscript at base of stamp similarly inverted, not in Ayres or RHM, Ferreira states that only three examples are recorded on Bulls Eyes, this the only 60r.



60067



600 - 800

Campos, Cidade DE(RJ): 60r. black, four good large even margins cancelled by both ornate oval (Ayres 1256) and Correrio Geral Da Corte date stamp, small fault at bottom right well clear of frame lines, a fine double cancel example.



60068

△ ⊙

500 - 600

Campos, Cidade De (RJ): 1843 60r. grey-black, worn impression, four good margins on piece with complete ornate handstamp, XF and scarce as complete strike on piece. (Ayres 1256).



60069

⊙

400 - 500

Campos S.I.De (RJ): 60r. black early impression, four good margins used with part red-brown handstamp 'S+I+DECA', fine condition.



60070

⊙

400 - 500

Campos S+I+De (RJ): 1943 30r. early impression, four good margins cancelled by part handstamp 'DECAM'.



60071

⊙

260 - 400

Campos (RJ): 1843 30r. black early impression, four even margins used with large part handstamp across top (Ayres 1135), ink erosion has caused a split along top of left-hand leg of 'M'.



60072

⊙

4'000 - 6'000

Cananea (SP): 60r. back, four close to good margins used with large part framed handstamp (Ayes 1257), some manuscript above this, stamp with fault at left side at start of the cancel probably from ink erosion but still clear of design, this stamp illustrated in Ferreira, RHM cat US\$ 10,000.

CANTAGALO



60073

⊙

400 - 500

Cantagalo (RJ): 60r. black early impression, four good margins used large part straight-line framed handstamp (Ayes 1258).

CAPIVARY



60074

⊙

500 - 600

Capivari (RJ): 30r. black early impression, four even margins used with large part framed handstamp (Ayes 1261), fine and fresh.



60075

⊙

600 - 1'000

Capivari (RJ): 30r. grey-black intermediate impression, four good to large margins with whole of diving line at top cancelled by a part bluish white handstamp, not a colour recognised by Napier, Ayres or Massen, though a brown and white mix appeared in 2012, this stamp illustrated in Ferreira page 47.



60076



1'300 - 1'500

Capivary (RJ): 60r. black, four good margins used with large part red framed date stamp reading down, not in Ayres, RHM list at \$5000, this stamp illustrated in Ferreira's 2017 catalogue. A unique cancel.



S.I. DE CARINHANHA

60077



500 - 600

Carinhanha S.I. De (BA): 60r. black intermediate impression, four close to good margins tied to small piece by two green handstamps, diagonal crease running through stamp and piece causing some surface abrasion, illustrated in Ferreira page 48.



60078



1'500 - 2'000

Carolina (GO): 60r. black early impression, four good to large margins with complete dividing line at left cancelled with large part handstamp in reddish brown (Ayres 1266), only known on this value, believed to be unique.



60079



260 - 400

Castro (SP): Two 60r. black early impressions, both with framed straight-line handstamp, one with close to touched margins that maybe shows rounded edge to postmark frame, some splitting due to ink erosion, second example with good margins, reddish cancel with heavy horizontal creasing (Ayres 1267).



CATALA O



60080



600 - 800

Catalao (GO): 60r. grey-black, four large to close margins used with part two straight-line framed handstamps together with part double ring cds (Ayes 1268).



60081



500 - 600

Caza Branca (SP): 30r. four good to large margins with full dividing line at right used with part red-brown handstamp reading upwards (Ayes 1271).



60082



CEARA



60083



60084

60082



700 - 1'000

Ceara: 60r. black early impression, four good to large margins used with virtually full black handstamp (Ayes 1274) plus a full manuscript date above, some tones mainly at the edges of the stamp, a very rare near complete combination of cancels, Paris expert's handstamp.

60083



400 - 500

Ceara: 60r. black, four good to close margins used with large part framed handstamp runiing from top to bottom (Ayes 1274), some slight stains of little consequence, L.E. and G.T. violet backstamps.

60084



400 - 500

Ceara: 60r. black early impression, four good margins with central handstamp and above this a manuscript date (Ayes 1274), scarce cancel combination.



60085



400 - 500

Cidade de Campos: 60r. early impression on thin greyish blue paper fresh used with part double oval date stamp of Cidade De Campos in black (Ayres 1256).



60086

COCAES



60087

60086



600 - 1'200

Cocaes (MG): 60r. black early impression, four margins used with virtually complete handstamp (Ayres 1137), three small wormholes and creasing at top left, the stamp re-backed, rare, RHM cat \$6,500.

60087



600 - 1000

Cocaes (MG): 30r. grey-black, four good to large margins used with large part handstamp (Ayres 1137) reading up at left plus double-ring cds, split in bottom arm of 'E' due to ink erosion, otherwise a fine example, RHM cat \$8,000.



60088



1'000 - 1'200

Conceicao (GO): 60r. grey-black, four good even margins used bearing two-lined manuscript, slight toning and creasing, Ex Goeggel.

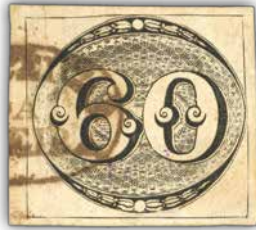


60089



600 - 800

Conceicao (GO): 60r. black, four even margins with two line, slightly unclear manuscript cancel. This stamp illustrated in Ferreira page 219, some slight toning.



60090

⊙

500 - 600

Conceicao Da Ribeira (RJ): 60r. grey-black worn impression, four margins used with about half of the three-line oval handstamp (Ayres 1280), some slight overall paper toning.



60091

⊙

1'000 - 1'500

Constituicao (SP): 60r. black early impression, four close to large margins used with good part of this very rare large cancel (RHM 10.000 USD), on reverse a small thin has been filled in, otherwise fine. (Ayres 1569).



60092

△ ⊙

60 - 80

Contagem (MG): 60r. black early impression, four even margins tied to small piece by almost full straight-line manuscript, the stamp has had its lower section broken by a crease, this stamp is illustrated in Ferreira page 220.

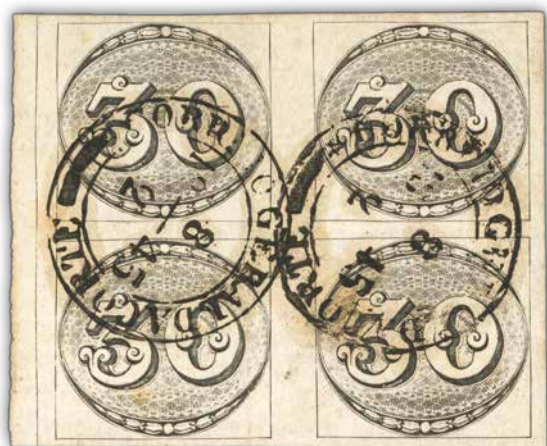


60093

△ ⊙

120 - 200

Corte: 30r. black, early impression, close to good margins used on piece with virtually full Correio Geralda Corte date stamp of 16 3 1844 (Ayres 1608), some slight toning.



60094



60095

60094

☉ ☒

Corte (Correio Geral Da) (RJ): 30r. grey-black, worn impression block of four, good to large margins with full dividing line at left cancelled by two complete date stamps of 8/2 1845 (Ayres 1608), ironed-out horizontal crease through bottom pair and vertical crease through left-hand pair, still a rare and attractive multiple not recorded in the Juchert census. RHM 26000 USD

2'600 - 4'000

60095

☉

Corte (Correio Geral Da): 60r. black early impression vertical strip of three, good to large margins used with framed date stamp (Ayres 1608), ironed-out light vertical crease through strip not detracting from a striking, rare vertical multiple.

1'000 - 1'200



60096

△ ⊙

260 - 400

Corte (Correio Geral Da) (RJ): 60r. black early impression, close to good margins tied to small piece by double circle date stamp of 1/8 1844 (Ayres 1608), some slight toning, first anniversary of day of issue.



60097

⊙

1'000 - 1'500

Corte (Correio Geral Da) (RJ): 60r. black early impression, horizontal strip of three, close to good margins with complet dividing line at left cancelled by double circle date stamps (Ayres 1608), vertical crease in margin between second and third stamps otherwise fine clean condition.



60098

⊙

60 - 100

Corte (Correio Geral Da) (RJ): 60r., four even margins cancelled by both unframed and framed date stamps (Ayres 1608 and 1185), vertical splitting in design through zero, unusual.

Bidding Steps

50-100	→ 5	500-1000	→ 50	10'000-20'000	→ 1'000
100-200	→ 10	1'000-2'000	→ 100	20'000-50'000	→ 2'000
200-500	→ 20	2'000-5'000	→ 200	50'000-100'000	→ 5'000
		5'000-10'000	→ 500	100'000-200'000	→ 10'000

All bids in Swiss francs

Bids between these steps will be adjusted accordingly to the next higher bid step.
The bidder is bound by his/her offer until a higher bid has been validly accepted.



60099



1'300 - 1'500

Corte (Correio Geral Da) (RJ): 60r. worn impression vertical strip of four, good to close margins except at base where cut into, used with two almost complete date stamps (Ayres 1185), horizontal crease through centre margin and horizontal crease through top of lower stamp, toning front and back.



60100



60101



60102

60100



120 - 200

Corte (Correio Geral Da) (RJ): 60r. early impression, four even margins cancelled by large part unframed date stamp (Ayres 1185), fine condition.

60101



120 - 200

Corte (Correio Geral Da) (RJ): 60r., grey black, four even margins cancelled by large part unframed date stamp (Ayres 1185) of 27/4 1844, good condition.

60102



200 - 260

Corte (Correio Geral Da) (RJ): 30r. black, four good to close margins cancelled by part unframed date stamp (Ayres 1185) of 14/1 1844, good condition.



60103

⊙

600 - 1'000

Corte (Correio Geral Da) (RJ): 60r. black, four good to close margins with full dividing line at right cancelled by part unframed **rare red date stamp** (Ayes 1185), fine and fresh condition, this example illustrated in Ferreira page 58.



60104

⊙

1'000 - 1'500

Corte (Correio Geral Da) Brazil (RJ): 90r. black, four good even margins used with part black framed date stamp (Ayes 1609) plus part manuscript *Rio de/ Jan.....*, fine and scarce.



60105

△ ⊙

500 - 800

Corte (Correio Geral Da Brazil) (RJ): 60r. black early impression, close to good margins tied to small piece by the scarce double circle date stamp of 25/4 1843 (**wrong year !** Ayres 1610), the stamp has been lifted from the piece and hinged back into position. RHM 3000 USD



60106

⊙

260 - 400

Corytiba (SP): 30r. black, good to large margins, cancelled by 'Correio De Corytiba' double circle (Ayres 1570), good condition.



60107



60108

60107



Cuiaba (Correio Geral De) (MT): 60r. black, early impression, four good margins used with virtually complete cancel that clearly shows '18' followed by dash at left, as illustrated on page 65 of Ferreira (Ayres 1139 var), small nick in top left corner well clear of design.

500 - 600

60108



Cuiaba (Correio Geral Da) (MT): 60r. black, four good even margins used with part black unframed date stamp (Ayres 1139 var) in black showing printed '18--' for year and small manuscript "2" for month, light vertical ironed-out crease.

400 - 600



60109



Cuiaba (Correio Geral De) (MT): 60r. black, four good to large margins with complete dividing lines at right and base cancelled in purple with full manuscript date in black pen (Ayres 1139) overall ageing and small pin hole at top of '6'.

260 - 400



60110



Cuiaba (Correio Geral De) (MT): 60r. black bisected or cut affixed to small piece with full violet-purple unframed cancel with manuscript date "3/10 1853", the piece affixed to backing papers, scarce legible strike.

120 - 200

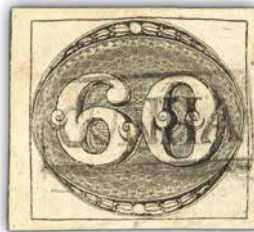


60111

⊙

60 - 100

Cuiaba (Correio Geral De) (MT): 30r. black, three margins used small part violet-purple unframed cancel (Ayres 1139).



60112

⊙

500 - 800

Cunha (SP): 60r. black, good to large margins bearing full framed handstamp (Ayres 1284), some very slight paper thinning, a rare complete strike with only about 5 examples recorded on any denomination.

CUTIA



60113

⊙

400 - 600

Cutia (SP): 60r. black, four close to good margins bearing part of two strikes (Ayres 1287) with 'IA' at left and 'CUT' at right, a little worn with one tone towards top left.



60114

⊙

260 - 400

Cutia (SP): 60r. black, four good to large margins with full dividing line at right showing large part manuscript cancel "(Cu)tia 30 de jun(ho)", illustrated on page 222 of Ferreira, small central thinning with resultant tiny hole.

The currency of the auction is the Swiss franc.

CHF

DESTERRO



60115



600 - 1'000

Desterro (SC): 60r. worn impression close to large margins showing part of dividing line at right with straight-line reddish brown largely complete handstamp (Ayes 1141), also showing part black date stamp of Correio Geral de Santa Catharina, small thinning towards bottom right, this stamp illustrated in Ferreira page 69, **unique**.



60116



60117

60116



500 - 600

Diamantina V. (MG): 60r. black, four good to large margins, showing full dividing line at left used with very large part wide oval framed handstamp (Ayes 1524), some manuscript at top, fine used.

60117



400 - 500

Diamantina V. (MG): 60r. black, four good margins used with very large part wide oval framed handstamp (Ayes 1524) some general paper toning.



60118



500 - 600

Formiga (Villa Nova DA) (MG) 60r. black, four margins fresh used with small part cancel at top (Ayes 1600), only a couple of Bulls Eyes recorded with the circular handstamp.



60119



500 - 600

Formigas (V.DE) (MG): 60r. black, four good even margins used with large part double oval handstamp (Ayes 1525), handstamp upside down, fine and scarce.



60120



260 - 400

Franca (SP): 60r. black with margin touched down right side used with large part brownish handstamp (Ayres 1526), small surface abrasion bottom right and paper thinning to the left of this.



60121



400 - 500

Goyaz (Correio Geral De): 60r. grey-black, four good even margins used with part cds (Ayres 1613) small tone spot lower left other fresh sharp appearance.



60122



60123

60122



1'300 - 1'500

Grampara (Para): 90r. grey-black worn impression, four large margins with just full dividing line at left that extends up above the complete dividing line at top used part handstamp (Ayres 1311), very rare with only five recorded on this value.

60123



400 - 600

Grampara (Para): 60r. black in horizontal pair with half a 60r., showing complete dividing line at left and at top used with large part violet framed handstamp (Ayres 1311), the cancel upside down, fine condition.



60124



700 - 1'000

Granja (CE): 90r. black, four good even margins showing part of two handstamps with smaller size letters, not listed by Ayres or Maassen, identified in Ferreira where this stamp illustrated on page 81.



60125



60126

60125



500 - 600

Granja (CE): 90r. black, four close margins showing part handstamp with large 'G', not listed in Ayres.

60126



400 - 500

Granja (CE): 60r. black, four good even margins showing large part handstamp with level letters, not listed in Ayres, illustrated in Ferreira page 81.



60127



400 - 600

Guarapary (ES): 60r. black, four good even margins used with large part manuscript cancel, some paper thinning visible at bottom right, scarce.



60128



400 - 500

Guaratingueta V.De (SP): 60r. good to large margins with complete dividing line down left side used with part ornate framed black handstamp (Ayres 1528).



60129



600 - 1'000

Guaratuba (SP): 60r. black, four good even margins used with very large part framed handstamp, some ink staining on reverse not detracting from a rare cancel.



60130



260 - 400

Gurupa (PA): 60r. black used with good to large margins with three-line manuscript including at date on bottom line, one of two examples, fine.

IGUAPE



60131



400 - 500

Iguape (SP): 60r. black, early impression, touched margin along base, close at top and good at sides bearing complete framed handstamp (Ayes 1315).

IGUASSU.



60132



500 - 600

Iguassu (RJ): 60r. grey-black, four good even margins used with full framed handstamp (Ayes 1316) reading from bottom left to top right, about a dozen examples recorded, A.D. pencil on reverse.



60133



60134

60133



600 - 800

Imperatriz (CE): 30r. grey-black, four good even margins used at base with part framed handstamp (Ayes 1318), a fine example with **only five recorded**.

60134



400 - 500

Imperatriz (CE): 60r. black with four good even margins used with part handstamp at base (Ayes 1318) and showing additional manuscript date at the top, about five examples recorded.



60135



500 - 600

Inhambupe (BA): 60r. early impression, four even margins with complete dividing line at top showing part of straight-line handstamp at top (Ayres 1142), fine and very rare.



60136



500 - 800

Inutiliz. (SP): 60r. black, early impression four good margins cancelled with virtually complete handstamp, slight thinning at top and some paper adhesion at centre, rare.



60137



60138



60139

60137



700 - 1'000

Itabira (MG): 90r. greyish black, four margins used with large part brownish straight-line handstamp (Ayres 1143) reading diagonally down from left to right, very rare with **only a few recorded on this value.**

60138



500 - 600

Itabira (MG): 60r. black, four good margins fresh used with reddish brown straight-line handstamp (Ayres 1144) slight doubling of handstamp, this stamp illustrated in Ferreira page 91.

60139



500 - 600

Itabira (MG): 60r. black, four good to large margins with full dividing line at top used with small manuscript cancel top left overstruck with large part oval V. Diamantina handstamp. There is a difference of opinion as to whether this small Itabira is a handstamp or manuscript, this stamp is illustrated in Ferreira page 91.

Please ensure your bids arrive on time!

In the case of equal bids, the first bid received will take precedence.



60140

⊙

400 - 500

Itaboray (RJ): 60r. black early impression, four good to close margins used with very large part ornate framed handstamp (Ayres 1324), ironed-out vertical crease.



60141

⊙

400 - 500

Itapecuru (correio do MA): 60r. black, four good to large margins used with part undated handstamp (Ayres 1576) without indication of manuscript date as illustrated in RHM, small paper thinning at top left.



60142

⊙

500 - 600

Itapemerim (ES): 90r. black, four good even margins on thin paper with part handstamp 'ITAPEM', slight overall ageing not detracting, unlisted in Ayres.



60143

⊙

400 - 500

Itapeva (SP): 60r. black, four good even margins used with virtually full handstamp (Ayres 1328), small tear at base running into design, rare with only two recorded, both on this value.



60144



260 - 400

Jacarehy (SP): 60r. grey-black worn impression, four even margins with part of two handstamps (Ayres 1146) both running horizontally, the top one upside down, some ink erosion from cancel, most noticeable in 'H' at bottom right causing 2mm paper loss, this example illustrated in Ferreira page 96.



60145



500 - 600

Jacobina, Villa Da (BA): 60r. grey-black, four good margins used with part two double-ring framed handstamps, only a few recorded.

JACOBINA



60146

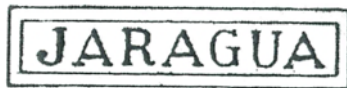


400 - 500

Jacobina (BA): 30r. black early impression, four good margins used with large part straight-line brownish red horizontal handstamp (Ayres 1147), very fresh, fine used, only five examples recorded on Bull's Eyes.



60147



60148

60147



500 - 600

Jaragua (GO): 60r. black close to large margins with large part dividing line at right cancelled at base with six of the seven letters visible.

60148



500 - 600

Jaragua (GO): 60r. black close to good margins cancelled across centre in red with six of the seven letters visible, horizontal crease across stamp at bottom.



60149

⊙

500 - 600

Jaragua (GO): 60r. black good to large margins with full dividing line at top, cancelled across base in brown with very large part handstamp, small nick in margin bottom right, very slight thinning towards top left, this stamp illustrated in Ferreira page 99.



60150

⊙

600 - 800

Jundiahy (SP): 30r. black early impression, four even margins showing paper fold variety at base used with small part handstamp in brownish red, this handstamp shows a straight edge at left side as opposed to the rounded end in Ayres (1336) and RHM.



60151

⊙

400 - 500

Laguna (SC): 30r. black, close to good margins used with virtually complete handstamp (Ayres 1149) reading upwards, small thin under first letter of cancel.



60152

⊙

400 - 500

Lavras V de (MG): 60r. black, four good to huge margins, with full dividing lines at both left and top, cancelled part framed handstamp (Ayres 1529), the handstamp upside down with slight ink erosion on 'A' causing tiny hole. **Only ten examples recorded**, this one a corner marginal.



60153

LIMEIRA



60154



60153



500 - 600

Limeira (SP): 60r. grey-black, four good to close margins showing complete dividing line at left used with very large part handstamp (Ayres 1340) good clean example, **only five recorded examples**, all on this value.

60154



400 - 500

Limeira (SP): 30r. and 60r. both used framed straight-line handstamp (Ayres 1340 var) showing frame as a series of tiny dashes, the 30r. extensively repaired at right with brownish red handstamp and a fine four margined 60r. with black handstamp.



60155



2'600 - 4'000

Lorena, Villa De (SP): 60r. worn impression, close to good margins used by ideal full strike of bright green handstamp (Ayres 1578) fine and fresh, **very rare in this colour and certainly one of the most spectacular Bull Eye cancel in existence.**



60156



600 - 1'000

Lorena (SP): 60r. worn impression, four good to close margins with two full manuscript cancels crossing each other, one reading up and one down, both from left side, fine and unusual, ex Alemany lot 355 (Corinphila, 2012).



60157



400 - 500

Lorena, Villa De (SP): 60r. grey-black with good even margins used with virtually full circular handstamp (Ayres 1578), tiny pin hole from ink erosion on 'D' of 'De', still a fine looking example. Also with a poor example that seems to show some manuscript dating.

MACAHÉ



60158



400 - 500

Macahe (RJ): 30r. black in part horizontal pair, close to good margins, the stamp at left cut into leaving a complete brownish framed handstamp.



60159



600 - 800

Maceio (AL): 90r. black worn impression, four good even margins used with large part manuscript *Macaio* cancel. Illustrated page 228 in Ferreira.



60160



400 - 500

Maceio (AL): 60r. black, four good to large margins used with large part framed handstamp with rounded edges, fine and fresh.



60161



400 - 600

Magé, agencia do correio da villa (RJ): 30r. early impression, good to large margins with bottom left part of the large four-line handstamp, as illustrated in Ferreira page 109, fine item, one other example known on 30r.



60162



260 - 400

Mambocaba (RJ): 30r. black, close to large margins used with end of framed handstamp (Ayres 1350), some slight staining and a pin hole at right of '0'.



60163



400 - 600

Mangaratiba (RJ): 30r. worn impression, close margins used with good part circula framed three-line handstamp, some slight ageing, violet handstamps on reverse.



60164

△ ⊙

600 - 1000

Maranhao, Correo Do: 90r. black good even margins affixed to piece tied by complete red double-ring cds (Ayres 1615) dated Abril 9 1845, fine condition.



60165

⊙

600 - 1000

Mariana, Correo De (MG): 60r. grey-black, four margins used with large part two brown-red circular handstamps, some slight overall ageing not unduly detracting.



60166

⊙

400 - 600

Marianna (MG): 60r. close to good margins fresh used with part straight-line handstamp (Ayres 1153) plus a further example on aged paper, handstamp reading up, ink erosion causing small hole on leg of 'N'.



60167

△ ⊙

300 - 600

Marica (RJ): 90r. black, four even margins tied to piece by full framed handstamp (Ayres 1356), ink erosion has caused some holes and a split along the length of top of cancel, very rare, still with a pleasing appearance.



MATTO GROSSO

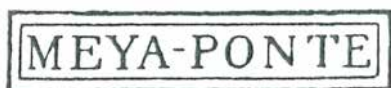


60168

⊙

600 - 1'000

Matto Grosso: 60r. black four good to huge margins with full dividing line at left used with part brownish red handstamp (Ayres 1358) plus part magenta Cuiaba cancel with manuscript date, fine and clean condition, this example illustrated in Ferreira page 118.



MEYA-PONTE



60169

⊙

600 - 1'000

Meya-Ponte (GO): 60r. black on browned paper, four good even margins used large part handstamp (Ayres 1360), only six recorded examples on Bull's Eyes.



60170

⊙

260 - 400

Minas Novas (MG): 30r. black four good to huge margins with full dividing line at base, used with part straight-line handstamp (Ayres 1154), vertical crease at right side.



60171

△ ⊙

500 - 800

Mogy Das Cruzes (SP): 60r. black, close to large margins showing full dividing line at top, tied to piece with large part straight-line handstamp, less clear handstamp below, rare.



60172



700 - 1'000

Mogy Mirim, Correio De (SP): 30r. black bottom left corner marginal, good to huge margins used with both Mogy Mirim (Ayres 1155) and Caminas (Ayres 1565), both cancels virtually complete, some slight toning on minor importance.

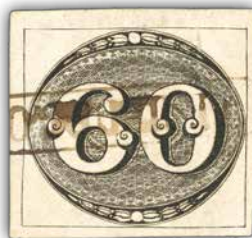


60173



260 - 400

Morretes (SP): 60r. worn impression on brownish paper, four close to good margins used with part handstamp at bottom of stamp.



60174



400 - 500

N.Friburgo (RJ): 60r. early impression, four margins fresh used with large part handstamp (Ayres 1365), a very fine example albeit upside down.

Bidding Steps

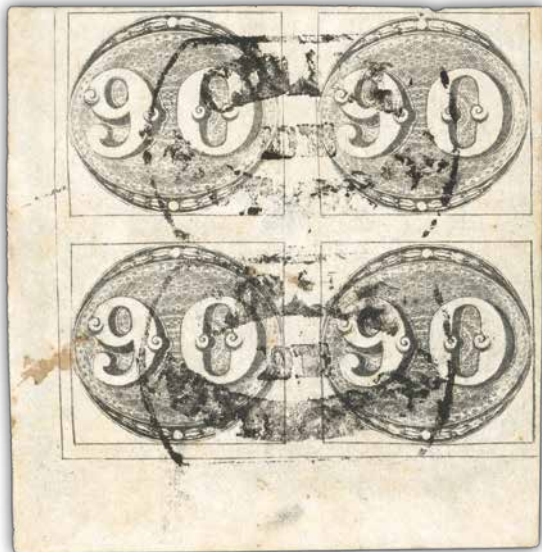
50-100 → 5
 100-200 → 10
 200-500 → 20

500-1000 → 50
 1'000-2'000 → 100
 2'000-5'000 → 200
 5'000-10'000 → 500

All bids in Swiss francs

10'000-20'000 → 1'000
 20'000-50'000 → 2'000
 50'000-100'000 → 5'000
 100'000-200'000 → 10'000

Bids between these steps will be adjusted accordingly to the next higher bid step.
 The bidder is bound by his/her offer until a higher bid has been validly accepted.



60175



60176

60175

⊙ ⊞

2'600 - 4'000

Nictheroy, cidade de (RJ): 90r. grey-black bottom left corner marginal block of four, close to huge margins used two complete strikes of framed three-line handstamp (Ayres 1371), small fault at top middle of top right stamp, small central thinning. Not mentioned in the Bernd Juchert census.

60176

⊙

260 - 400

Nictheroy, Cidade De (RJ): 60r. early impression, four good even margins used with bold very large part handstamp (Ayres 1371), a fine example.

**OEIRAS
DOPIAUHY**



60177

⊙

600 - 1'000

Oeiras Dopiauhy (PL): 30r. black horizontal pair, close to good margins, on browned paper with each stamp cancelled vertically by two-line handstamp, the cancel seemingly faded out leaving just a white impression, illustrated in Ferreira page 124.

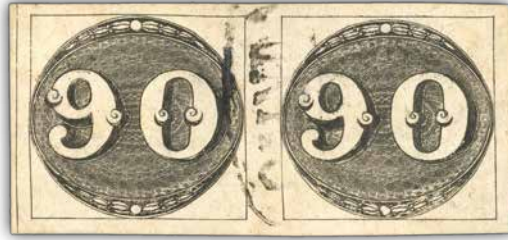


60178

⊙

500 - 600

Oeiras Dopiauhy (PL): 60r. black, four good even margins used with large part red two-line handstamp, small hole in 'R' of 'Oeir' from ink erosion, fine appearance.



60179

⊙

2'600 - 4'000

Olinda (PE): 90r. deep black, early impression on yellowish paper, horizontal pair from First Composite plate, State A, positions 7-8, with vertical dividing line at left, cancelled by oval framed handstamp at centre in black, a fine multiple, each stamp signed Calves.



60180

△ ⊙

1'500 - 2'000

Oliveira Va (MG): 30r. black, four margins tied to small piece by complete ornate oval handstamp (Ayres 1376), some inconsequential stains, as illustrated in Ferreira page 125, two stamps of this value recorded.

Feldman
INTERNATIONAL AUCTIONS SINCE 1967

SMALL OBJECTS OF GREAT VALUE

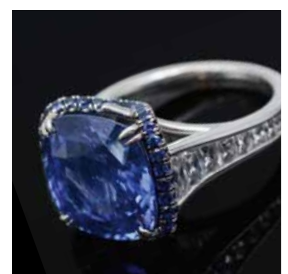
Whether they have financial or sentimental significance, we care for your treasures as much as you do.

David Feldman SA is proud to partner with its sister company, Feldman International Auctions (FIA), to combine fresh innovation with decades of experience in the auctions business.

We are excited to announce FIA's 2nd Grand Auction of watches, jewellery and objets d'art at the Ritz-Carlton Hotel de la Paix on June 18, 2025.

Contact us!

www.feldmanauctions.com





60181



1'300 - 1'500

Oliveira: 60r. black, early impression in left hand marginal, vertical strip of three, good to large margins with dividing line down left, as illustrated in Ferreira page 229, very fine and most unusual example of a complete single manuscript across a multiple.



60182



500 - 600

Oliveira Ce (MG): 60r. black, four good to close margins cancelled by large part oval handstamp (Ayres 1375), slight paper thinning at top.



60183



260 - 400

Ouro Preto, I.C. Do (MG): 60r. worn impression, left-hand marginal with good to huge margins cancelled by large part double-ring cds of 1845/ MAYO/ 15 (Ayres 1617), some slight ageing not detracting.

PALMEIRA

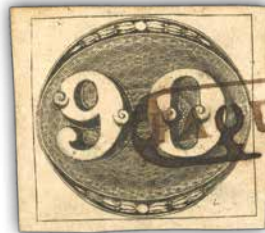


60184



500 - 600

Palmeira: 60r. dark black, three margins bearing virtually complete strike of straight-line framed handstamp, not listed by Ayres, Maassen or Koester, the sides of the frame are not visible, so possibly missing an 'S', illustrated in Ferreira on page 127, some ink erosion at right causing a pin hole and small split.



60185



600 - 1'000

Paqueta (RJ): 90r. black, four good margins showing first four letter of framed straight line handstamp, illustrated in Ferreira page 127 where stated it is uncertain if this is the correct name.



60186



500 - 600

Parahiba do Norte, C.G.Da: 60r. black, four margins used with large part double-ring date stamp from 1847, bottom corners rounded.



60187



60188



60187



600 - 1'000

Parahiba Do Sul (RJ): 60r. grey-black touched margins used with large part vivid vermilion handstamp (Ayres 1583), a fine striking item, such vivid cancels seldom seen.

60188



400 - 600

Parahiba Do Sul (RJ): 30r. and 60r. both with four margins and both with part cancels (Ayres 1583), the 30r. with slight paper thinning at top and scuffs bottom left, 60r. slight ageing.



60189



400 - 500

Parahibuna (SP): 60r. black, four even margins showing large part manuscript "27/ 1846/ 1 Parahib(una)", a fine rare dated manuscript, so full on one adhesive.



60190



400 - 600

Paranagua (SP): 60r. black four close to good margins used with an almost complete strike of framed handstamp (Ayres 1384), some slight ageing at edges, rare to find so complete and as such a premium example.



60191

PARATI



60192

60191



400 - 500

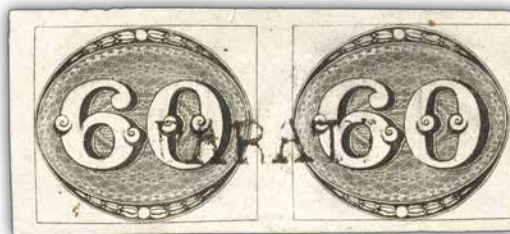
Paraty (RJ): 60r. grey black, four even margins used with virtually complete unframed straight-line handstamp in brownish-red (Ayres 1160), central vertical crease, violet dealers hs on reverse.

60192



260 - 400

Paraty (RJ): 60r. black, early impression, four even margins used with part straight-line handstamp (Ayres 1160) and part Pernambuco 'shield' (Ayres 1548), repaired tear at right side.



60193



500 - 600

Paraty (RJ): 60r. black horizontal pair, good to very close margins used with complete central strike (Ayres 1160), ironed-out vertical crease in right-hand stamp.



60194

⊙

400 - 600

Parnaíba (SP): 60r. black, four good even margins used with last six letters of handstamp in dark brown (Ayres 1159), repaired closed tear from centre of bottom margin, Müller Basel handstamp on reverse.



60195



60196

60195

⊙

600 - 1'000

Paty Do Alferes (RJ): 30r. black, four good to close margins with part straight-line handstamp 'Y DO ALFERE' (Ayres 1161) in vermillion, also showing some, maybe random manuscript, very rare.

60196

⊙

500 - 600

Paty Do Alferes (RJ): 60r. grey black worn impression close (at top) to good margins with part straight-line handstamp 'Y DO ALFE' (Ayres 1161), three tiny pin holes from ink erosion.



60197

⊙

1'000 - 1'200

Pelotas (RS): 60r. black, four good margins used with large part handstamp in red (Ayres 1162), fine and very rare.



60198

△ ⊙

120 - 200

Pelotas (RS): two 60r. black with poor margins, the left-hand stamp on piece with the other affixed alongside to show full straight-line cancel (Ayres 1162), tear at lower right of left-hand stamp, less than ten examples currently recorded.



60199 ☉

1'000 - 1'200

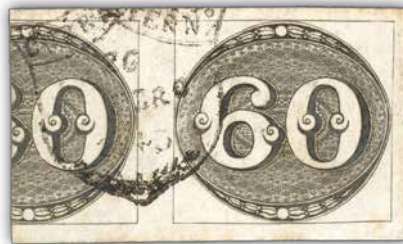
Penedo (AL): 90r. black, four close to good margins, cancelled by oval-framed handstamp (Ayes 1393), the cancel upside down, only two examples on a 90r. recorded.



60200 ☉

500 - 600

Pernambuco: 60r. black in bottom right marginal pair used with complete central ornate 'Shield' date stamp of 29 Janr 1844 (Ayes 1548), some slight paper ageing, pencil initials BOPP on reverse.



60201 ☉

400 - 500

Pernambuco: 60r. black, early impression, a partial pair with over half of adjoining stamp at left, good margins on the three remaining sides cancelled with large part Pernambuco 'Shield' date stamp (Ayes 1548), fine and fresh.



60202 ☉

400 - 500

Pernambuco: 90r. black early impression with four margins (just clear at right side) and full dividing line at bottom, used with part Pernambuco 'Shield' date stamp, the stamp showing a weak printing of black at right side, some slight paper toning.



60203

⊙

500 - 600

Pernambuco: 90r. black, four good margins used with complete abbreviated manuscript cancel, three tiny holes from ink erosion on vertical stroke of “n”, an attractive example.



60204

⊙

400 - 500

Pindamhangaba (SP): 60r. black four mostly good margins used with virtually complete three-line framed handstamp (Ayres 1402), one tiny pin hole from ink erosion, small tear at bottom right just into frame line, still a very worthwhile example, upright and nearly complete.

Bidding Steps

50-100	→	5	500-1000	→	50	10'000-20'000	→	1'000
100-200	→	10	1'000-2'000	→	100	20'000-50'000	→	2'000
200-500	→	20	2'000-5'000	→	200	50'000-100'000	→	5'000
			5'000-10'000	→	500	100'000-200'000	→	10'000

All bids in Swiss francs

Bids between these steps will be adjusted accordingly to the next higher bid step.
The bidder is bound by his/her offer until a higher bid has been validly accepted.

**A UNIQUE CANCELLATION AND
AN EXTRAORDINARY “SEMI-XIPHOPAGUS” USAGE ON COVER**



60205



RHM 2 40'000 - 50'000

Pindaminhangaba (SP): 60r. black, late impression, position 18 from the First Composite Plate, a key positional piece from the lower left corner of the pane, large to enormous margins on two sides clearly displaying the corner plus an additional interpanneau rule at base, a magnificent “semi-xiphopagus” example used on reverse of 1st April 1844 entire letter from Jacarey via Pindaminhangaba to Rio de Janeiro, with the stamp cancelled in transit by framed “PINDAMI/NHAN/GABA” hs in brown (Ayles 1402). A manuscript note by Saoul Newbury above the stamp has been erased and central file fold clear of the franking. **The only “Bull’s Eye” cover recorded from this locality, as well as an extremely rare letter exhibiting a “semi-xiphopagus” which additionally represents a key positional piece.** Cert. Holcombe (photocopy, 1994), Moorhouse (2013) and Juchert (2018).

Property of another vendor

Provenance: Saoul Newbury, Reinhold Koester and Hugo Goeggel.

PIRANGA



60206



700 - 1'000

Piranga (MG): 60r. black, four good even margins used with part straight-line handstamp, AD pencil on reverse, very fine and fresh.



60207



400 - 500

Pitangui, Va DE (MG): 60r. black, good margins bearing good legible part of this long straight-line handstamp, fine used.

POMBA



60208



260 - 400

Pomba (MG): 60r. black with just one margin at top, brown-red cancel of first four letters, repaired top right corner. A rare cancellation.

PONTA GROSSA



60209



500 - 600

Ponta Grossa (SP): 60r. black, four close to good margins bearing part handstamp across centre of stamp (Ayres 1408), Calves handstamp on reverse.

Find a bid form on the **last page** of this catalogue.



60210



600 - 800

Porto Ale (RS): 30r. black, four good to large margins, used with part cds of 1843, scarce on this value.



60211



400 - 600

Porto Ale (RS): 60r. black, four even margins used with large part cds of 10 Jul 1844, repaired tear at top left just running into design.



60212



60213

60212



600 - 800

Porto Allegre, Sul (RS): 60r. black, good to large margin vertical pair cancelled with central handstamp and partial strike at base (Ayres 1586), small scissor cut in margin between pair at right, bottom stamp with light horizontal crease, an attractive pair.

60213



900 - 1'300

Porto Sul Allegre (RS): 90r. worn impression, four good margins with part despatch handstamp (Ayres 1586) and also cancelled on arrival in France with very large part **blue Paris cds of 20 Sept 44**, small tear at top just running into design not unduly detracting from this **unique item showing a French postmark in blue.**

The currency of the auction is the Swiss franc.

CHF



60214



60215

60214

⊙

500 - 600

Porto Feliz (SP): 60r. black, close to good margins cancelled by part framed straight-line handstamp (Ayres 1415), good fresh condition, fewer than 10 examples have been recorded.

60215

⊙

400 - 500

Porto Feliz (SP): 60r. black, four good margins cancelled by large part framed straight-line handstamp (Ayres 1415), reading upside down, horizontal crease at top of numerals, **fewer than 10 examples have been recorded.**



60216

⊙

500 - 600

Pouzo Alegre (MG): 30r. worn impression, four good to close margins cancelled with large part straight-line handstamp (Ayres 1157 var) showing full stop after initial 'P', also with part framed handstamp.



60217

⊙

400 - 600

Pouzo Alegre (MG): 60r. three good margins, touched down right side showing complete manuscript "Pouzo/ Ale", light central vertical crease, illustrated in Ferreira page 230.



60218

⊙

600 - 1'000

Pouzo Secco (RJ): 60r. black, mostly close margins used with large part brownish framed handstamp, reading up at an angle resulting in a nearly complete strike, very rare.



60219



400 - 800

Villa de Prezidio (MG): (nowadays Rio Branco) 60r. black early impression, four close to good margins with only tiny imperfections, with good part of circular framed handstamp (Ayres 1601), **fewer than five recorded**, this example is recorded in Ferreira page 146.

PRINCIPE



60220



600 - 1'000

Principe (SP): 30r. black, good even margins used with part framed handstamp (Ayres 1165), slight overall ageing, not listed in RHM on this value.



60221

PRINCIPE



60222

60221



600 - 1'000

Principe (SP): 60r. black, four good to close margins cancelled by bold large type framed handstamp, good condition, this stamp illustrated in Ferreira page 148.

60222



400 - 600

Principe (SP): 60r. intense black early impression, four good even margins used with good part of red framed handstamp reading down from top left, very fine appearance and extremely rare, but with crease running horizontally through stamp, the left half split.

V.D.QUELUZ



60223



700 - 1'000

Queluz, V.D. (MG) 30r. black four good even margins with complete dividing lines at right and at bottom cancelled by both brown straight-line despatch and black Correio Geral de Corte date stamp, as illustrated in Ferreira page 150.



60224

⊙

500 - 600

Queluz, V.D. (MG): 60r. black, four good to large margins showing part of dividing line at left and all at base, cancelled part brown straight-line handstamp, at the bottom between the frame line and dividing line there is a pre-printing paper fold that creates a jump in the dividing line at right, under ten 60r. recorded.



REZENDE

60225

⊙

2'600 - 4'000

Rezende (RJ): 60r. black four good to huge margins cancelled yellowish framed straight-line handstamp (Ayres 1430), a virtually complete example. The stamp has a large bottom margin that not only shows the dividing line but also the inter-panneau line below this, a fine example of the very scarce semi-xiphopagus 30r. pencilled BOPP on back.



60226

⊙

500 - 600

Rezende (RJ): 60r. black, four good even margins with part framed handstamp (Ayres 1430 var) that in this case must show straight edges and not rounded, fine and fresh.

REZENDE



60227

⊙

500 - 600

Rezende (RJ): 60r. black four good even margins showing part unframed straight-line handstamp with large letters, fine used with BOPP pencil on back.



60228

⊙

400 - 600

Rezende (RJ): 60r. black four good to large margins, small part of dividing line at left, showing framed straight-line handstamp with large first letter "R", fine used with BOPP pencil on back.



60229

△ ⊙

7'000 - 10'000

Villa do Rio de Contas: 60r. very wide-margined example showing dividing lines at top, on small piece tied by small circular red "VILLA DO RIO DE CONTAS" in Bahia, a superb strike with manuscript date inserted in black ink. This rare postmark is probably unique with manuscript date.

Property of another vendor



60230



1'000 - 1'200

Rio de Contas (BA): 90r. black, a bottom marginal with good other margins cancelled by part straight-line framed handstamp, light vertical creasing otherwise fine and rare, as illustrated in Ferreira, page 154.



60231

60232

60231



900 - 1'000

Rio de Contas, villa do (BA): 60r. black in right-hand marginal with good even other margins cancelled at left by part and at right by brown-violet double ring small handstamp, some slight paper ageing and very slight thins. As illustrated in Ferreira page 155.

60232



500 - 600

Rio de Contas, villa do (BA): 30r. black, four even margins cancelled at right part brown-violet double ring small handstamp, fine.



60233



500 - 600

Rio Gde Do Norte, Cor. Ger. do: 60r. black, four good even margins, cancelled by brown purple large date stamp showing two dividing lines in outer ring, the stamp illustrated in Ferreira page 159, as complete a strike as is possible on a single stamp.



60234



900 - 1'000

Rio Grande (RS) 30r. black horizontal pair, four good margins showing part of dividing line at base cancelled by one part and one full cds of 21 Out 1843, a fine pair, illustrated in Ferreira page 157.

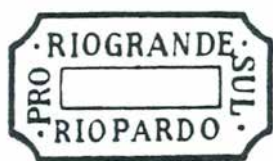


60235

⊙

1'000 - 1'200

Rio Grande do Norte: 30r. intense black, four good to close margins used part oval date stamp in purple brown (Ayres 1434), very rare, a striking example of very fine colour.



60236

⊙

1'000 - 1'200

Rio Pardo (RS): 60r. black, four good margins used with a virtually complete ornate framed handstamp 'Pro. Rio Grande Sul/É Rio Pardo' (Ayres 1549), the stamp only has a light crease and a small thinning and is otherwise in perfect condition. **Certainly the finest known strike of this rare postmark of which fewer than ten examples recorded.**

RIOPARDO

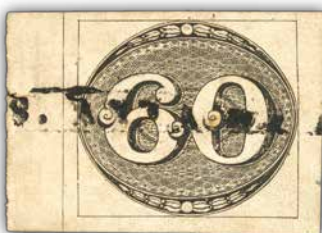


60237

⊙

700 - 1'000

Rio Pardo (MG): 60r. black, four good to large margins with full dividing line at base and large part at left cancelled by straight-line handstamp.



60238

⊙

400 - 500

S. Anna De Pirahy (RJ): 60r. black, left-hand marginal with good to large other margins with only a very light vertical crease cancelled by the framed handstamp.



60239

SABARÁ



60240

60239



400 - 500

Sabara (MG): 60r. black early impression, four good even margins used large part handstamp (Ayres 1176), fine used with handstamp across centre of stamp, pencil initials on reverse including Bopp.

60240



400 - 500

Sabara (MG): 60r. black early impression, four even margins used large part handstamp in brown-purple (Ayres 1176), slight thinning by top margin, a rare shade of cancel.



60241



400 - 500

Sacco da Mangaratiba (RJ): 60r. grey black, close to huge margin at left with dividing line, used with large part oval-framed handstamp, Schiffer backstamp.



60242



60243

60242



500 - 600

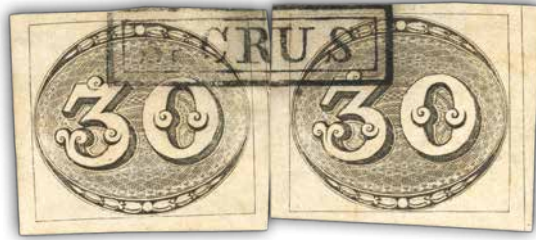
Santa Catharina, Correio Geral De (RJ): 60r. intermediate impression, thin yellowish paper, horizontal pair, good to large margins with full dividing lines at right and base used with virtually full Correio Geral De S. Catharina datestamp, small repaired thin at bottom of right-hand stamp, an attractive pair.

60243



500 - 600

Santa Catharina, Correio Geral De (RJ): 60r. early impression, good margins used by part double-ring cds of December 1843 (Ayres 1626), not manuscript as shown in RHM, but part of handstamp as shown in Ferreira.



60244



1'500 - 2'600

Santa Crus (GO): two single 30r. black formerly used together on the same letter cancelled by full strike of **very rare framed handstamp S.CRUS**, both with four good to large margins, right-hand example with full dividing line at right, the first stamp with slight thinning top right corner, the two stamps illustrated in Ferreira page 167. This postmark is priced in RHM at 7000 USD



60245



600 - 800

Santa Luzia (GO): 60r. black, four even margins used with part double-framed straight-line handstamp in brown, a couple of tiny pinholes from ink erosion, illustrated in Ferreira page 168.



60246



2'000 - 4'000

Santo Antonio (RS): 60r. black, good to large margined example with full dividing line at base cancelled by complete handstamp, running top left to bottom right, extremely fine and **very rare with only five recorded** and this one belonging to the two finest. Priced in RHM at 12000 USD.



60247



700 - 1'000

Santos, Correio De (SP): 90r. worn impression, four good margins used with part date stamp (Ayes 1633) in a strong blue colour, as illustrated in Ferreira page 171.



60248



60249

60248



600 - 800

Santos, Correio De (SP): 30r. black early impression in vertical pair, good to close margins (at right), cancelled by central double ring date stamp (Ayres 1633), good condition with an almost complete example of the cancel.

60249



500 - 600

Sao Bernardo (CE): 60r. black, four good even margins, used part stright-line handstamp, some slight ageing, a good example of this rare cancellation, illustrated in Ferreira page 172.

S. FIDELLIS.



60250



1'000 - 1'200

Sao Fidellis (RJ): 90r. grey black, good to huge margins with full dividing line at base cancelled by part 'S.FIDE..' handstamp (Ayres 1456), a tiny paper thin top left of little importance to this rare cancellation.

S FRANCISCO



60251



600 - 1'000

Sao Francisco (SC): 30r. grey-black, four close to good margins used with part two examples of straight-line handstamp (Ayres 1169), some slight paper thinning, only five examples recorded, this one illustrated in Ferreira page 173.

S GABRIEL



60252



600 - 1'000

Sao Gabriel (RS): 60r. grey-black, four margins used with part two stright-line handstamps, some faults with holes caused by ink erosion and small tear at top to right of 'S', very rare.



60253



600 - 800

Sao Goncalo (RJ): 60r. black four close, clear margins cancelled by very large part oval-framed handstamp (Ayres 190), slight paper thinning in top corners, rare cancel. RHM 10000 USD



60254



60255

60254



500 - 600

Sao Joao del-Rei (MG): 60r. black, four good even margins fresh used with part sraight-line unframed handstamp (Ayres 1170), reverse Georg Bühler handstamp.

60255



500 - 600

Sao Joao do Principe (RJ): 60r. grey-black, four close to good margins used with good part of framed straight-line handstamp at top, ironed-out vertical crease at right, Bopp pencil on reverse.



60256



1'000 - 1'200

Sao Joze (MG): 90r. grey black, four close to good margins used with first part framed straight-line handstamp in reddish brown, very rare.



60257

⊙

500 - 600

Sao Joze (GO): 60r. black very close to large margins with complete dividing line at right, used with complete rectangular-framed handstamp at centre with manuscript below, as illustrated in Ferreira page 177, the stamp with ink staining top left and suffering ink erosion around frame of handstamp.



60258

⊙

600 - 800

Sao Joze do Norte (RS): 60r. black, good to large margins cancelled part undated double-ring handstamp.

VILLADE S. LUIZ



60259

⊙

500 - 600

Sao Luiz, Villa de (SP): 30r. worn impression, four close to good margins bearing good part straight-line handstamp (Ayres 1184), some overall ageing.



60260

⊙

600 - 1'000

Sao Matheuz (ES): 60r. black, four good margins used with complete straight-line handstamp (Ayres 1184) that runs diagonally from bottom left, a very fine example.



60261



60262

60261



Sao Paulo, Correo Geral de: 60r. black, four even margins used with good part framed date stamp in blue; stamp torn diagonally across and repaired.

120 - 200

60262



Sao Paulo, Correo Geral de: 60r. black, four good to large margins used with parts of two framed date stamps in blue, a fine example.

600 - 1'000

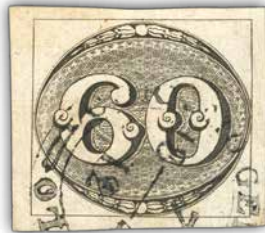


60263



Sao Paulo, Correo Geral de: 60r. black, good even margins used with large part date stamp (Ayes 1188) that shows small parts only of outer frame line and none of inner, fine used.

500 - 600



60264



Sao Paulo, Correo Geral de: 60r. black, good to large margins used with part date stamp (Ayes 1188) that clearly shows the inner and outer framed lines.

400 - 500



60265



Sao Paulo, Correo Geral de: 60r. black, four close to good margins used with large part clear blue date stamp of 12/ 11 1843, this example illustrated in Ferreira page 180.

600 - 1'000



60266



2'600 - 5'000

Sao Paulo, Correo Geral de: 1844 (18.6) fragile entire to Rio de Janeiro franked 60r. black with margin just touched and smaller faults, tied by large date stamp, repeated at right, the letter was originally written at Campinas. A heavy vertical crease splitting down from top and some discolouration bottom left. **Only one other cover showing this date stamp cancelling the stamps is recorded by Bernd Juchert**, this one is a new discovery and **unique with the 60 reis**.



60267



1'000 - 1'200

Sao Roque (SP): 60r. black, four good to large margins fresh used with brownish-red framed S.ROQUE handstamp, this stamp illustrated in Ferreira page 183, very fine and rare.



60268



60269

SERGIPE

60268



Sergipe: 60r. black, horizontal pair with good to large margins cancelled by central framed handstamp (Ayes 1499), both with Senf handstamps, signed A Diena, the stamp at left has small surface abrasion, the right is in very fine condition. An impressive example from the Agathon Faberge collection (bought in 1911 from Kirchner).

600 - 1'200

60269



Sergipe: 60r. black, two singles, both good to large margins, one with full dividing line at top, showing a largely complete single brown-red handstamp across the two (Ayes 1499), the right-hand stamp with paper thin at top right.

600 - 800



60270



Sergipe: 30r. black, four good to large margins showing complete dividing line at top used part italic handstamp (Ayes 1498) on toned paper.

260 - 400



60271



Serro, c. do (MG): 60r. black, four even margins used with large part single ring handstamp (Ayes 1562 var).

260 - 400

You can view our catalogues and bid during the auction via our website at www.davidfeldman.com



60272

⊙

1'000 - 1'200

Sete Lagoas (MG): 90r. black, close to good margins showing two strikes of straight-line handstamp, illustrated in Ferreira page 187, extremely rare.



60273

SILVEIRAS



60274

60273

⊙

700 - 1'200

Silveiras (SP): 60r. black, four good even margins used with bold strike of framed, straight-line handstamp in reddish brown (Ayres 1502), a choice example. RHM 6000 USD

60274

⊙

700 - 1'000

Silveiras (SP): 60r. black, four good to large margins with full dividing line at top used with bold strike of framed, straight-line handstamp in reddish brown (Ayres 1502), red Stolorow handstamp on reverse together with pencil initials.



60275

⊙

600 - 1'000

Silveiras, Villa do (SP): 60r. black, four margins used with good part reddish brown handstamp, good fresh condition.

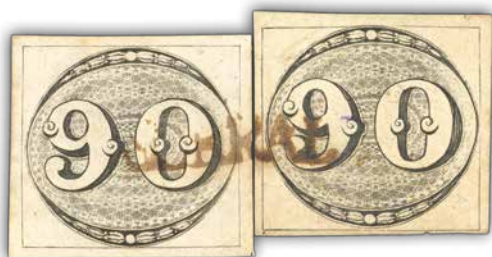


60276

⊙

500 - 600

Silveiras (SP): 60r. black, four good to close margins used with part small framed handstamp reading upwards, pencil initials on reverse, as illustrated in Ferraria page 188.



60277



60278

SOBRAL

60277



600 - 1'000

Sobral (CE): 90r. black, two examples close to good margins that show the straight-line handstamp complete (Ayres 1177), some slight ageing.

60278



120 - 200

Sobral (CE): 30r. black, good to large margins with full dividing line at base used with part straight-line handstamp at top (Ayres 1177) and part manuscript date at base, some heavy ink erosion causing holes within stamp.



60279

SOROCABA



60280

60279



600 - 800

Sorocaba (SP): 60r. black, four good to large margins with large part dividing line at top cancelled by type I framed handstamp (Ayres 1505 var) that runs upwards from bottom left to top right, some slight ageing and small paper thin.

60280



600 - 800

Sorocaba (SP): 60r. grey black, four good to large margins with large part dividing line at top, cancelled by type II framed handstamp (Ayres 1505) in vermillion, good condition.



60281



600 - 800

Sorocaba (SP): 30r. black, four good to large margins cancelled by two type I framed handstamp (Ayres 1505 var) running downwards in opposite corners, forming an 'X', two tiny pinholes from ink erosion.

The currency of the auction is the Swiss franc.

CHF



60282



400 - 500

Sumidouro (RJ): 30r. black, three margins, touched along base used with part oval handstamp (Ayes 1507), a scarce cancel.



60283



260 - 400

Tacoahy (RJ): 30r. black, four clear but very close margins with part of handstamp reading upwards, some slight paper thinning towards top. Spelt Tacoahy but accepted as from Itagoahy.

TAMANDVA



60284



500 - 600

Tamandva (MG): 60r. black, four good even margins cancelled by prt straight-line handstamp (Ayes 1178), a good fresh example.



60285



600 - 1'000

Tatuhy (SP): 30r. grey black, four good margins cancelled by part upside down straight-line handstamp, fresh condition, scarce.

UBATUBA



60286 ☉

400 - 500

Ubatuba (SP): 60r. grey black, four good margins used with part and large part straight-line handstamps, less than ten examples believed to exist.



60287

VALENÇA.



60288

60287 ☉

1'000 - 1'200

Valenca (RJ): 30r. grey-black, worn impression in horizontal pair with good even margins cancelled by single red octagonal red handstamp, a very fine pair with various signatures including A Diena and Calves.

60288 ☉

260 - 500

Valenca (RJ): 60r. black, four close to large margins with complete dividing line at bottom used on small piece with virtually complete octagonal handstamp, suffering from some heavy ink erosion but still of good appearance.

VALENÇA



60289 ☉

500 - 600

Valenca: 90r. black, close to good margins cancelled by very large part framed, oval ended handstamp (Ayes 1531), one tiny ink erosion hole and a paper thin at base of '9', five examples on this value recorded.

V^A DE VASSOURAS



60290 ☉

1'000 - 1'200

Vassouras, Va de (RJ): 60r. grey-black used with large part bluish-green handstamp (Ayes 1530), some thinning at right and a diagonal crease, a rare colour with less than 10 recorded and rare on any Bull's Eyes.



60291



500 - 600

Vassouras, Va de (RJ): 30r. and 60r. worn impressions, close to good margins which together show a complete ornate framed handstamp (Ayres 1530), a fine display item.

U

VICTORIA



60292



400 - 500

Victoria (ES): 60r. black, good to large margins used with part straight-line handstamp reading upwards (Ayres 1183), fine fresh used example.

YTU



60293



400 - 500

Ytu (SP): 60r. black, four good margins used with largely complete framed handstamp (Ayres 1542), fine condition, seven 60r. known with this cancel.

Symbols and Condition

Symboles et Condition / Symbole und Erhaltung

Symbols / Symboles / Symbole

*	mint with original gum <i>neuf avec gomme / ungebraucht mit Falz</i>
**	mint never hinged <i>neuf avec gomme intacte / postfrisch</i>
(*)	unused, un gummed or regummed <i>neuf sans gomme ou regommé / ungebraucht ohne Gummi oder nachgummiert</i>
⊙	used <i>oblitéré / gebraucht</i>
⊞	block of four or larger <i>multiple / Viererblock</i>
∩	tête-bêche pair <i>paire tête-bêche / Kehdruckpaar</i>
⊗	fiscal cancel <i>oblitération fiscale / fiskalische Entwertung</i>
△	piece or fragment of a cover or document <i>fragment / Briefstück</i>
✉	cover or postcard incl. postal stationery <i>lettre, carte postale ou entier / Brief, Postkarte oder Ganzsache</i>
E	essay <i>essai / Entwurf</i>
P	proof (incl. die, plate or trial colour) <i>épreuve / Probedruck</i>
R	revenue or fiscal <i>timbre fiscal / Gebührenmarken</i>
S	specimen <i>spécimen / Specimen</i>
F	forgery <i>faux / Fälschung</i>

Condition of Covers / Condition des lettres et entiers / Erhaltung von Briefen

Extremely fine / Superbe / Prachterhaltung

Outstanding, the envelope with only slight wear, fresh stamp and cancel.
/ Qualité irréprochable, l'enveloppe ne présente que de très légères traces d'usure, le timbre est frais et l'oblitération est propre. / Herausragende Qualität, Brief mit minimalen Gebrauchsspuren (Archivqualität), frische Marken und sehr klarer Stempel.

Very fine / Très beau / Sehr schön

Choice condition, the envelope shows typical slight soiling or wear from usage.
/ Qualité premier choix, l'enveloppe peu néanmoins présenter quelques légères salissures et usures. / 1.Wahl, Brief zeigt nur typische leichte Gebrauchsspuren.

Fine to very fine / Beau à très beau / Schön bis sehr schön

Normal condition, the envelope shows a bit heavier wear or soiling.
/ Qualité standard, les traces d'usures sont un peu plus prononcées. / Gewöhnliche aber noch einwandfreie Erhaltung mit etwas stärkeren Gebrauchsspuren (leicht fleckig oder andere leichtere Abnützungen).

Fine / Beau / Schön

Evident wear or other factors (see description and photo), still a presentable example.
/ Evidentes traces d'usures ainsi que d'autres facteurs (voir photo et description) mais exemplaire très présentable. / Offensichtliche Gebrauchsspuren oder andere Mängel (siehe Beschreibung und/oder photo bzw. scan) aber noch immer herzeigbare und sammelwürdige Qualität bzw. Erhaltung.

Please note: Light edge wear, top backflap faults, slight reductions at one side, and file folds are normal for 19th Century covers. Also normal are light cleaning or minor stains and small mends along the edges. They are to be expected and are not always described, and are not grounds for return, nor are factors visible in the illustrations. We will gladly provide full-size scans on request.

Prrière de noter : De légères traces d'usures, défauts au rabat, de légères réductions sur un côté et des plis d'archives sont des caractéristiques normales pour des lettres du 19^{ème} siècle. De légères améliorations au niveau de la propreté ainsi qu'un éventuel ajout de quelques renforts sont également acceptables et ne figurent pas nécessairement dans les descriptions. Ces points ainsi que tous les éléments visibles au niveau de l'illustration ne peuvent par conséquent pas être sujets à réclamation. Des scans supplémentaires d'une pièce peuvent être envoyés sur simple demande.

Bitte beachten: Leichte Eckabnützungen, Mängel der Absenderklappe, leichte Reduktionen an einer Seite und Archivierungsbügel sind als normal für Briefe des 19.Jhdts. anzusehen, ebenso gelten als «normal» leichte Reinigung, kleine (minimale) Stockflecken oder Risschen und Bügel entlang der Briefkanten - diese sind zu erwarten, zu akzeptieren und nicht immer beschrieben (zumeist aber am photo und/oder scan ersichtlich) - diese stellen daher keine Grundlage für Retournierungen dar, ebenso wie auf den photos resp. scans klar ersichtliche Faktoren - Fotos und scans sind immer auch Teil der Beschreibung Im Zweifel können Sie von uns VOR DER Auktion jederzeit Photokopien oder besser auflösende scans verlangen und werden wir Ihnen diese gerne zusenden bzw. mailen.



Consign your collectibles with a reliable partner

Valuations are free and non-binding



1. Contact our specialists

Contact our specialists by phone or email to discuss your needs and to request an estimate of your collectibles.



2. Send us your collectibles

We organise express, tracked, and secure shipping from your home directly to us. Your items are fully insured.



3. Follow the process

Your collectibles are lotted, described, and estimated by our specialists. We promote your treasures to our worldwide client list.



4. Get paid quickly

You are usually paid within 6 weeks after the auction in the method most convenient to you.



David Feldman
International Auctioneers

Chemin du Pavillon 2
1218 Le Grand-Saconnex
Geneva, Switzerland

Phone & WhatsApp +41 22 727 0777
Email info@davidfeldman.com

Contact our specialists today
to make an appointment by
phone or email



www.davidfeldman.com

Conditions of Sale

1. By participating, registering, or obtaining a bidder number in one of David Feldman S.A.'s auctions, one agrees to be bound by the terms and conditions set out below and by the rights and obligations arising therefrom. These same terms and conditions apply to all transactions relating to lots forming part of the auction or concluded outside the auction. DAVID FELDMAN S.A., organiser of this auction, acts exclusively as agent and therefore assumes no liability whatsoever in the event of default(s) by buyers and/or sellers. **The auction is conducted in the name and on behalf of third-party sellers who are directly responsible to the exclusion of DAVID FELDMAN S.A.**

1.1 Lots are offered for sale based on their presentation in the catalogue and/or on the website: Lots are described with the utmost care but without engaging the responsibility of DAVID FELDMAN S.A. Photographs form an integral part of the descriptions.

1.2 There is no responsibility as to the condition of lots with a value of less than CHF 1'500 or its equivalent in other currencies. The catalogue may mention damage to the lots sold but does not draw up an exhaustive list. Bidders may consult the lot condition report, where available, either on the Internet or on request. Lots marked with a square next to the lot number are subject to federal control of precious metals (CMP), whose report is available on request.

1.3 DAVID FELDMAN SA organises one or more lot presentation days at a location in the Canton of Geneva or elsewhere, prior to the sale, where buyers or their agents may examine all lots at the times indicated in the sale catalogue or on our website.

1.4 Buyers have had the opportunity to examine the lots prior to the sale and are deemed to have examined all the lots purchased and to accept them in the condition in which they are found at the time of the auction, irrespective of the description given in the catalogue. This description is given as an opinion only and does not constitute any guarantee as to the authenticity of the items sold. **Except in the case of a prior agreement with David Feldman SA, no claims will be accepted; lots are sold as is.** However, in the context of the sale of philatelic items, clause 3.10 applies.

2. Auction bids

2.1 Each bid must be higher than the previous bid according to at least the following scale: (the currency may change depending on the auction). Unless otherwise indicated in the catalogue and on the website, the Swiss franc is presumed to be the currency of the sale.

50 - 100:	5	10'000 – 20'000:	1'000
100 - 200:	10	20'000 – 50'000:	2'000
200 - 500:	20	50'000 – 100'000:	5'000
500 – 1,000:	50	100'000 – 200'000:	10'000
1'000 – 2'000:	100	200'000 – 500'000:	20'000
2'000 – 5'000:	200	500'000 – 1'000'000:	50'000
5,000 - 10'000:	500	1'000'000 or more:	100'000

Bids between these amounts will be rounded up to the next higher bid.

2.2 Every bid constitutes a binding and irrevocable offer; the bidder remains committed to his/her offer until it is expressly overbid or declined by the auctioneer.

2.3 Double bids are notified immediately, and the bidding process is restarted; if no higher bid is made, the auction is decided by a draw; for equivalent bids from bidders present and absent, priority is given to the written bidder or to the bidder personally present in the case of a telephone bid.

2.4 The hammer price may, exceptionally, be reduced to the lowest winning bid if it is established that the same bidder has inadvertently increased the price by using more than one bidding method.

2.5 Telephone bids are only accepted if the bidders have registered in advance to bid in this way and are known to DAVID FELDMAN S.A. who has

been able to check their solvency. Buyers are charged an administrative fee.

2.6 Only buyers registered with DAVID FELDMAN S.A. who have obtained a bidder number may participate in the auction. Upon request, they must provide proof of identity, address, and bank account details. Upon request, DAVID FELDMAN S.A. reserves the right to limit the maximum bidding amount to certain buyers depending on their financial capacity. For certain buyers, DAVID FELDMAN S.A. may even require the prior deposit of a financial guarantee by credit card or bank transfer.

2.7 Written bids received by DAVID FELDMAN S.A. or on the website prior to the sale take precedence in all cases over bids made in the auction room. They are firm and final. Bidders giving a written bidding order may make alternative bids and/or limit the total amount of their bids. Bids given "to buy" may not exceed more than 10 times the value of the high estimate printed in the catalogue.

2.8 For auctions without an auctioneer, online bids are received by DAVID FELDMAN S.A. on its website. At the end of the auction, at the precise time and minute, the lot is awarded to the highest bidder, at one step above the next highest bid. If the last bidder has bid in the last fifteen seconds of the sale, the auction for this lot is extended by fifteen seconds from the time the last bid was received.

2.9 All written bids are considered binding for 60 days after the auction date. DAVID FELDMAN S.A. is therefore entitled to invoice the bidder for the goods until the expiry of this period. Any invoice received by the bidder is therefore valid and must be paid immediately.

2.10 DAVID FELDMAN S.A. has the right to refuse bids, to separate, join or withdraw any lot at its sole discretion. The sale will be conducted in English or French, but bids may be repeated in any other language. DAVID FELDMAN S.A. is also authorised to bid on behalf of sellers where reserve prices have been set. If the seller sets reserve prices for some of his/her lots, s/he will be deemed to be the buyer and DAVID FELDMAN S.A. will bid on his/her behalf up to the reserve prices set. If the price set by the seller is not reached, the next lot will be auctioned.

3 The auction sale

3.1 Auction Representatives and Agents: The bidder assumes personal responsibility for his/her bid and cannot claim that the purchase was made in the name or on behalf of a third party. The representative is jointly liable for the person s/he represents for compliance with the obligations.

This responsibility extends particularly to checking the quality of the lots purchased and to the subsequent payment of the invoice for the lots purchased.

Bidders who are personally present as representatives of third parties must communicate this unequivocally to the auction management at the latest at the time of the auction.

3.2 Winning bids: Each lot is awarded to the highest bidder on behalf of its respective seller. In addition to the hammer price, **the buyer is charged a 23% buyer's commission, plus VAT where applicable.**

VAT of 8.1% is payable by the buyer on the hammer price. For lots marked with a circle next to the lot number, VAT of 8.1% is payable on the buyer's commission only.

3.3 VAT paid may be refunded upon presentation of proof of export. DAVID FELDMAN S.A. will charge an administration fee of CHF 75.00.

Shipping costs will be invoiced separately.

Before the auction, buyers must obtain information on the administrative procedures for the export of lots and their legality. Buyers are solely responsible for any such formalities after the auction. DAVID FELDMAN S.A. can take care of this for a fee.

3.4 When the hammer falls, the profits and risks of the lots thus auctioned pass to the bidder whose bid has been accepted. However, the goods will



not be handed over to the buyer until the purchase price (hammer price plus costs and VAT, if applicable) has been paid in full. Thus, the risks are transferred at the time of the auction. Ownership passes to the buyer once the invoice has been paid in full and possession has been transferred.

3.5 At DAVID FELDMAN S.A.'s request, sales must be officially acknowledged by signature.

3.6 Payment: Successful bidders are obliged to pay the purchase price, plus VAT if applicable, and the commission in cash in the currency of the auction, against surrender of the goods purchased, within a maximum of 5 days of the auction.

Fees charged to DAVID FELDMAN S.A. for credit card payments will be invoiced to the buyer. These vary from 1.5% to 5% depending on the credit card company.

Cash payments are only accepted up to CHF 100'000.

3.7 Payment arrangements: Upon prior request at least 10 days before the sale, DAVID FELDMAN S.A. may, at its own discretion, grant payment arrangements to buyers. The buyer benefiting from such arrangements will pay a minimum amount of 25% of the total invoice within a maximum of 5 days from the date of the sale and will then pay the balance in equal monthly instalments over a maximum period of 4 months. Monthly interest plus costs incurred **at the rate of 1%** is charged by and on behalf of DAVID FELDMAN SA from the date of the sale. Interest is debited monthly to the customer's account. In general, **no lot is delivered without full payment of the hammer price, the sales commission and, if applicable, VAT.**

3.8 Late payment: Payment must be made in cash as soon as the lot is sold. Any buyer who has not paid the hammer price and the commission due in full within a maximum of 5 days of the sale is already in default of payment. In the event of default by the buyer, DAVID FELDMAN S.A. reserves the right (1) to cancel the sale and dispose of the lot(s) concerned and to take legal action against the buyer in order to obtain payment of an indemnity of 23% of the hammer price and full payment of the commission due plus interest of at least 1% per month or (2) to enforce the seller's lien in accordance with the above provisions. In addition, expenses incurred by DAVID FELDMAN S.A. in the performance of its obligations hereunder shall be levied in addition on all sums due from the buyer. In addition, the defaulting debtor loses all rights of complaint.

3.9 Right of lien: Until full payment of the amounts due, the buyer grants DAVID FELDMAN S.A., acting on behalf of the Seller, a right of lien on all lots sold but not delivered. This lien guarantees the payment of any amount due past and present, such as the hammer price, the purchase commission, possible VAT, interest, and possible costs. After notice from the buyer, DAVID FELDMAN S.A. is authorised, but not obliged, to realise the pledges without further formalities and without notice if the buyer is in default for the payment of his/her debt or the fulfilment of any obligation. DAVID FELDMAN S.A. may in all cases realise the liens by mutual agreement.

To this end, DAVID FELDMAN S.A. is not obliged to comply with the procedures specified in the Federal Debt Collection and Bankruptcy Act; DAVID FELDMAN S.A. is also free to initiate or continue ordinary debt collection proceedings without first realising the liens and without thereby waiving them.

If the realisation of the lien does not cover the amounts owed by the Buyer, DAVID FELDMAN S.A. is entitled to sue the Buyer for the difference.

3.10 Appraisal or counter-appraisal in the context of the sale of philatelic items only: DAVID FELDMAN S.A. may attach an appraisal to the description of philatelic items, the report of which forms an integral part of the description of the lots, which may be obtained on request. When the authenticity of a lot of philatelic objects is contested, the buyer must produce a certificate of expertise or counter-expertise from

a qualified expert justifying his/her claim, within 30 days of the date of the auction. If the recognised expert, who assumes all responsibility in the event of error, deems that the item has been falsified, s/he may mark it accordingly; the signs "FAKE" or "FORGED" do not then constitute an alteration to the batch of philatelic items.

In the event of such a claim, DAVID FELDMAN S.A. reserves the right to request, at its discretion, one or more subsequent expert appraisals, the costs of which will be borne by the seller if the buyer's claim is well-founded. If the buyer's claim is unfounded, the buyer will bear all the costs incurred. If the claim is well-founded, the lot of philatelic objects will be taken back, and the auction price and commission will be reimbursed in full to the buyer. In the event of delayed payment due to an appraisal approved by David Feldman S.A., interest is payable at 50% of the usual rate for any lot of philatelic objects whose authenticity is confirmed. If David Feldman S.A. does not agree, all interest will be due.

Buyers may request an extension for certification at the time of the adjudication only. For lots with a hammer price of 5'000 or more in the currency of the auction, DFSA will charge a flat handling fee of CHF 100 per item, plus the cost of the certificate. For all other lots DFSA will charge a flat handling fee of CHF 200 per item, plus the cost of the certificate.

3.11 Limits of the guarantee: Batch items described as collections, selections, or groups, those consisting of duplicates and accumulations, cannot be the subject of any claim whatsoever. Claims concerning lots of items described as sets or groups of sets containing more than one stamp will only be considered within the limits of the above article if they relate to more than one third of the total acquisition value of the lot. Lots of items which have been examined by the purchaser or his/her agent, as well as lots of philatelic items which are described as having defects, may not be the subject of any claim in respect thereof. No claim may be made in respect of perforation, centring, margins, or any other feature visible in the illustration of any illustrated batch of items.

3.12 All lots awarded must be removed after the auction by the purchasers within 5 days, at the purchasers' cost and expense. No lot may be picked up during the auction. Lots not picked up will be stored at the buyers' expense for a maximum of 6 months. After this period, the lots will become the property of DAVID FELDMAN S.A., without eliminating the buyers' financial obligations hereunder.

Upon request, DAVID FELDMAN S.A. directly or through a third party, can arrange transport or delivery against payment of this service in advance. Under no circumstances will DAVID FELDMAN S.A. or the third party be liable for any damage to or loss of the items during transport or delivery.

4 Applicable law and jurisdiction

The present auction and all legal relationships arising from it shall be subject exclusively to Swiss law. Any legal action or proceedings relating to the auction and the legal relationships arising therefrom shall be subject to the exclusive jurisdiction of the courts of Geneva, subject to appeal to the Swiss Federal Court in Lausanne. In any case, DAVID FELDMAN S.A. reserves the right to sue any defaulting buyer at his/her place of residence, in which case Swiss Law remains applicable.

5 Miscellaneous

These General Terms and Conditions of Sale apply to all purchases and sales transactions with David Feldman SA with participating bidders, even outside of auctions.

These Terms and Conditions of Sale have been drawn up in French and are accompanied by an English translation. In the event of any discrepancy between the English and French versions, the French text shall prevail.

At David Feldman International Auctioneers, we are not just about auctions; we are about elevating your philatelic experience to new heights!



Introducing our exclusive Creative Hub
– your gateway to unparalleled marketing excellence through:

- Creative Brilliance
- Strategic Marketing
- Trusted Expertise
- Attention to Detail

Experience the difference that expert marketing can make. Your stamps deserve nothing less than the best, and we are here to deliver.

David Feldman's **CREATIVE HUB**

DIGITAL MARKETING • PUBLISHING • CONTENT CREATION • ARTIFICIAL INTELLIGENCE • SOCIAL MEDIA • DESIGN • CREATIVITY • ADVERTISING & MERCHANDISING • INFORMATION TECHNOLOGY

Contact us today and let's embark on a journey to showcase your collection like never before!



**David Feldman
International Auctioneers**

Chemin du Pavillon 2
1218 Le Grand-Saconnex
Geneva, Switzerland

Phone & WhatsApp +41 22 727 0777
Email info@davidfeldman.com



www.davidfeldman.com

2nd Grand Auction

WATCHES • JEWELLERY
COINS • *OBJETS D'ART*
FURNITURE • PAINTINGS

Feldman
INTERNATIONAL AUCTIONS SINCE 1967

June 15, 2025
Ritz-Carlton Hotel de la Paix, Geneva

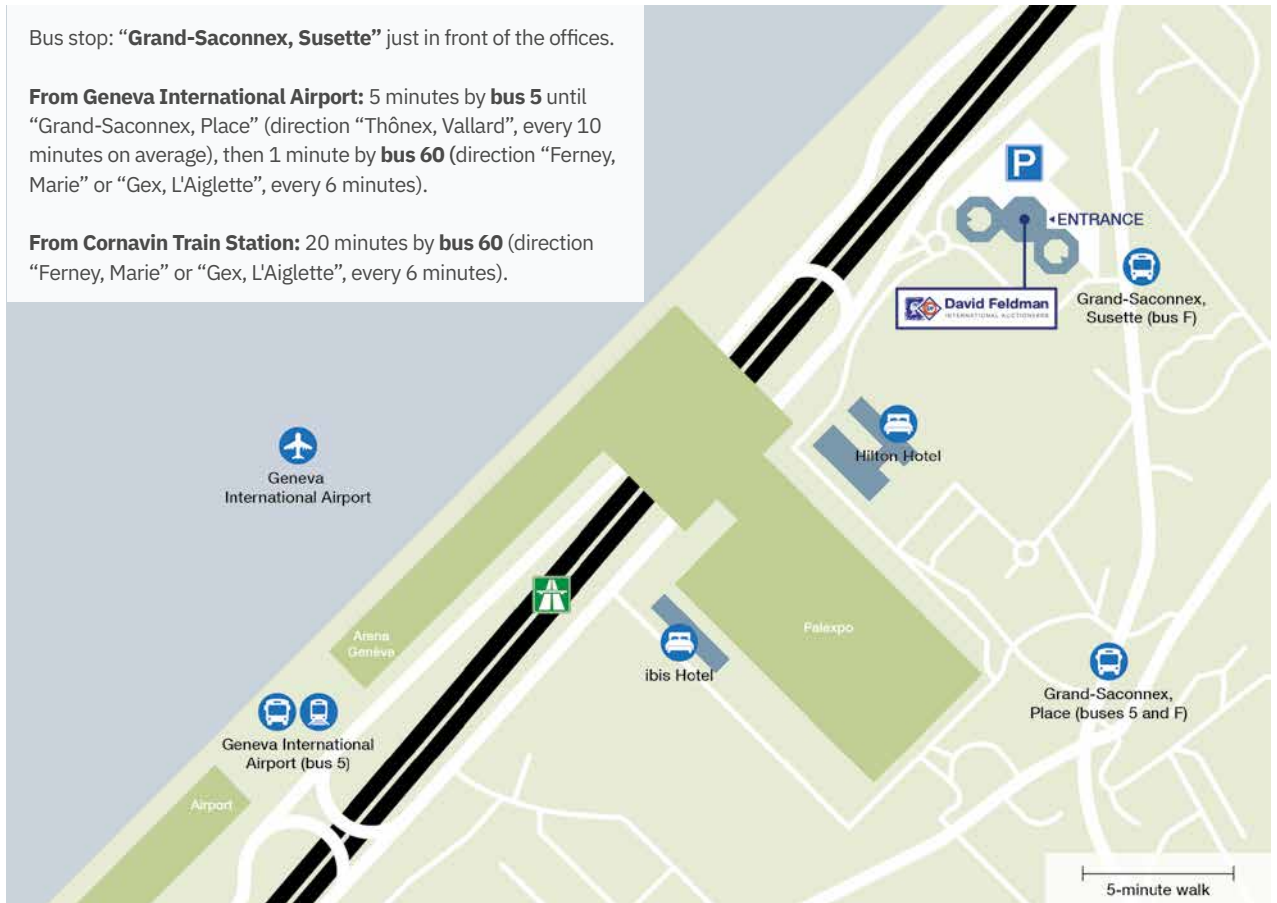
www.feldmanauctions.com

OUR OFFICES

Bus stop: “**Grand-Saconnex, Susette**” just in front of the offices.

From Geneva International Airport: 5 minutes by **bus 5** until “Grand-Saconnex, Place” (direction “Thônex, Vallard”, every 10 minutes on average), then 1 minute by **bus 60** (direction “Ferney, Marie” or “Gex, L'Aiglette”, every 6 minutes).

From Cornavin Train Station: 20 minutes by **bus 60** (direction “Ferney, Marie” or “Gex, L'Aiglette”, every 6 minutes).



**David Feldman
International Auctioneers**

Chemin du Pavillon 2
1218 Le Grand-Saconnex
Geneva, Switzerland

Phone & WhatsApp +41 22 727 0777

Email info@davidfeldman.com

www.davidfeldman.com

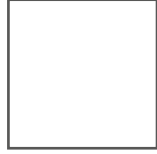


Download the **SBB Mobile** app on your mobile device to help you with tickets and transport options.

Step 1. Fold along this line, from edge to edge.

Step 2. Fold along this line, from edge to edge.

From:



David Feldman SA
Chemin du Pavillon 2
1218 Le Grand-Saconnex
Geneva, Switzerland

Step 2. Fold along this line, from edge to edge.

Step 1. Fold along this line, from edge to edge.

