

Tasmania



Tasmania's Coat of Arms was granted by King George V on 21 May 1917. The shield represents Tasmanian industry: apples, a sheaf of wheat, a branch of hops, plus a ram. It is supported by two Tasmanian tigers, now extinct. Above the shield are a red lion with a front paw resting on a spade and pickaxe.

The motto, "Ubertas et Fidelitas", means "Fertility and Faithfulness".

Floral emblem: Tasmanian Blue Gum

Animal emblem: Tasmanian Tiger (unofficial)

Bird emblem: Green Rosella Parrot

[FORM D.-3.]

Letter Bill, No. 229

Mail for Green bonds

- Prepaid Letters.....
- Prepaid Packets
- Insufficiently paid Letters and Packets
- Prepaid Letters and Packets, Postage in cash.....
- Prepaid Mis-sent Letters and Packets.....
- Country (or forward) Prepaid Letters
- Country (or forward) Prepaid Packets
- Franked Letters and Packets
- Ship Letters Outwards.....
- Ship Packets Outwards.....
- Newspapers

Johnston
POSTMASTER FORWARDING.

CANTON
111 27

Post Office, 1870
187

Column for Postmaster forwarding.		Column for Postmaster receiving.	
No. of Letters.	£ s. d.	No. of Letters.	£ s. d.
1		1	

POSTMASTER RECEIVING

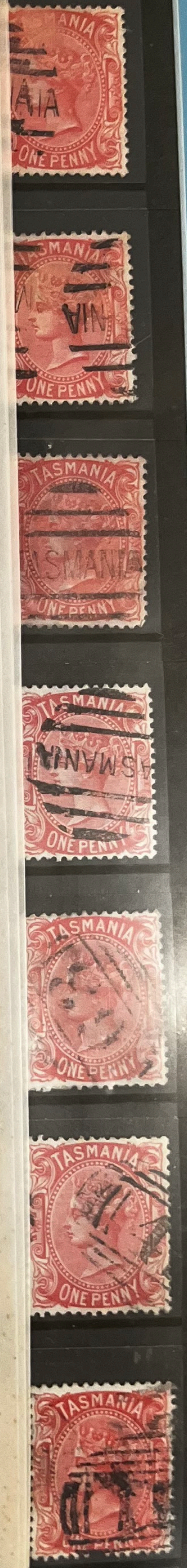
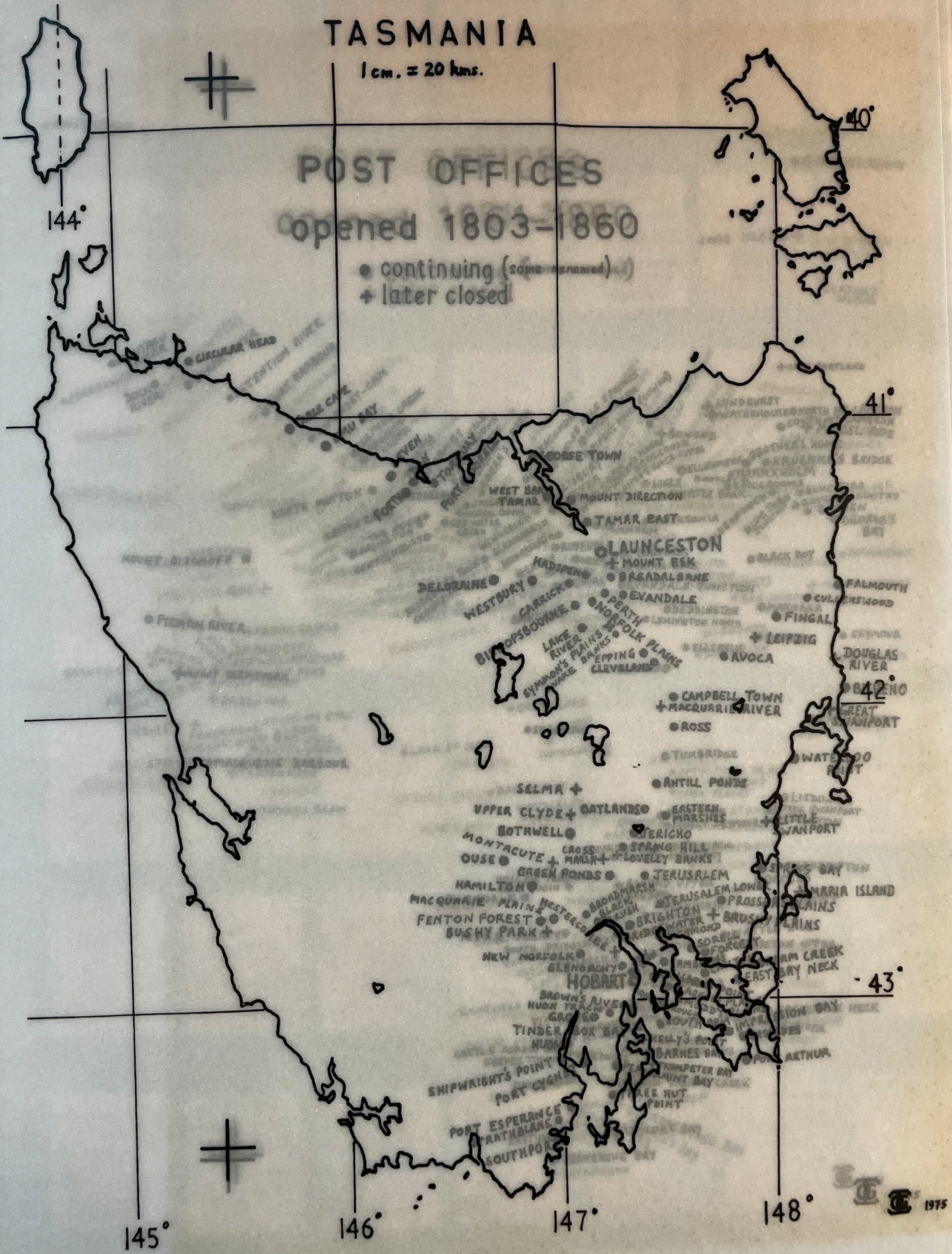
DATE OF RECEIPT. *22 July*

LETTERS FRANKED AND REGISTERED.

No. To whom addressed.

PREPAID REGISTERED LETTERS.

No. To whom addressed.







Wmk
"2"
Reversed



EARLIEST KNOWN
CANCELLATION
December 13, 1899
703-549-7404
www.icsc.org













Retouched sky

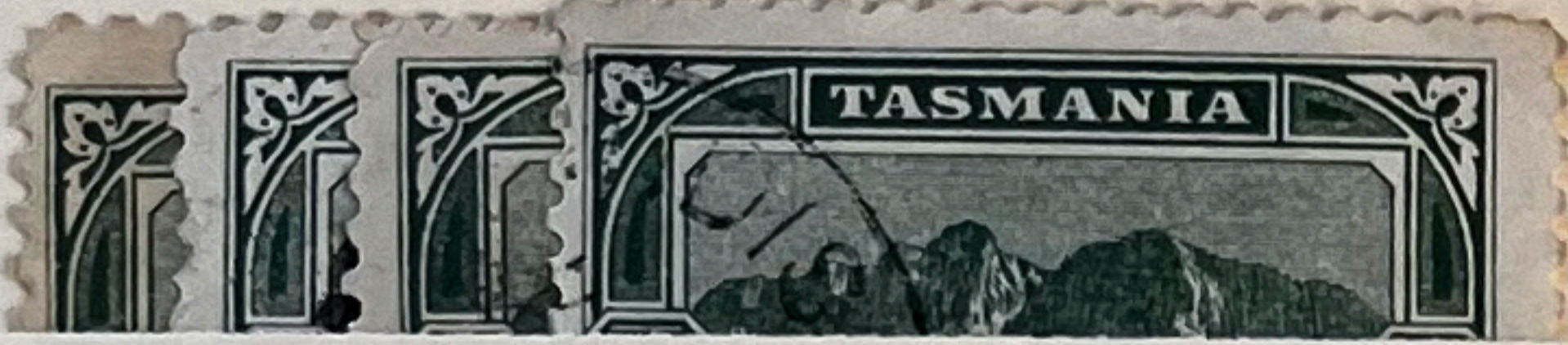


wmk
TAS



re-entry
RV

wmk v/crown
left p. 11



wmk v/crown
right p. 11



wmk v/crown
left p. 12 1/2



wmk v/crown
right p. 12 1/2



dots in lake
far shore



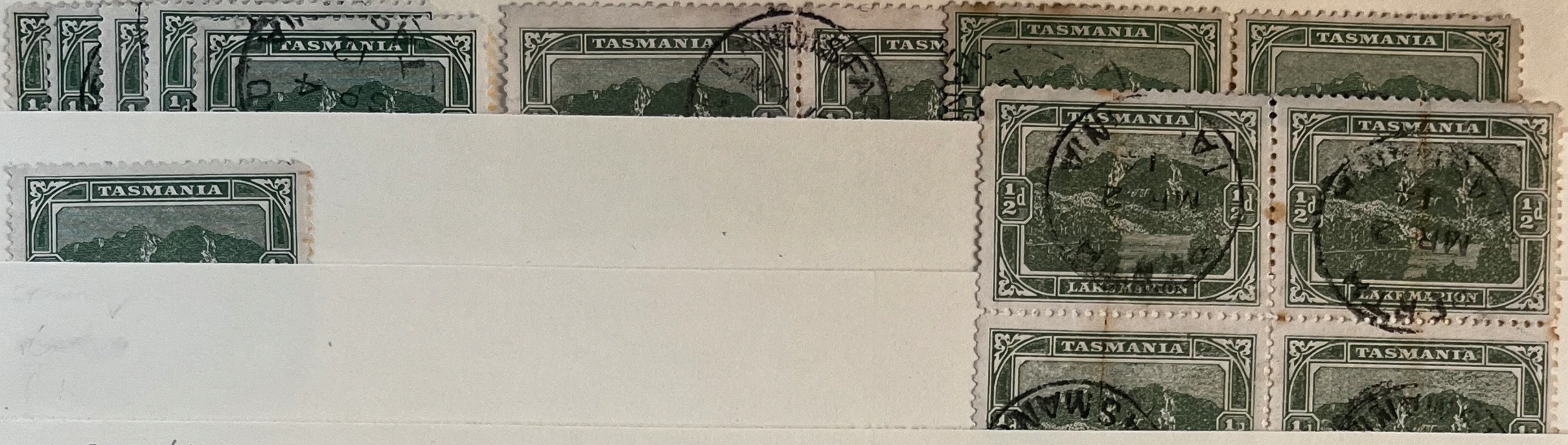
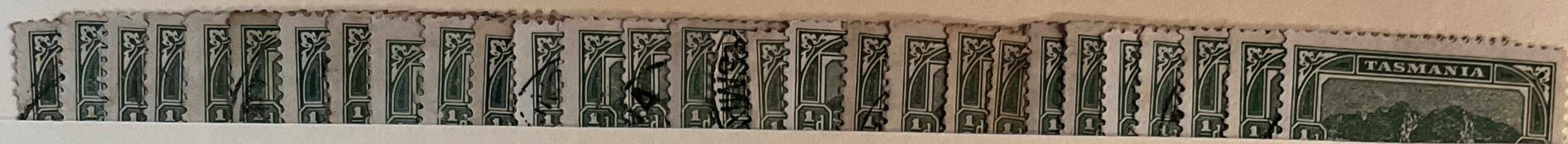
wmk crown/A
left p. 11



wmk crown/A
right p. 11



wmk crown/A
left 12 1/2



wmk crown/A
right 12 1/2



TAS



wmk TAS
Scott 87
SG 230

11 x 11



wmc TAS perf. 14
Scott 87
SF 230



color lines

Wmk V over Crown
Scott 95
SG 238 (Litho.)
SG 240-1 (Typo.)

"Nick in TASMANIA
Color tablet above
3rd A"

SG
238
p. 12 1/2



plate 2 pos. 42

white flaw under AS

plate 2 pos. 29

inv.
Wmk.

Scott 94 Type
SG 240

V over Crown
OCTOBER 1902

V over Crown
Sideways right
12 1/2



T Perfin

SG 240
Crown LEFT
12 1/2



SCOTT 94 Type V over Crown
SG 240a

V over Crown
sideways right
perf. 11



V over Crown
sideways left
perf. 11



right, Perf. 12 1/2
side line

white
flaw below
d, RVT



SG 241 (4-03)
V over crown
upright
p. 12 1/2



SG 241
V over Crown
upright-inverted
p. 12 1/2



scott 94 var.
SG 241a Typo.
V over crown upright
perf. 11



V over crown
upright - inverted
perf. 11



Scott 103

SG 250

Crown over A
upright

perf 12 1/2



Scott 103
SG 250
Crown over A
upright
perf. 12 1/2



SF 250 W1
Grown over A
INVERTED
Perf. 12 1/2



SG 250 w
Crown over A
INVERTED
Perf. 12 1/2



Missing year
in date slug

SG 250a

Crown over A
upright
part. 11



Worn plate

SG 250a

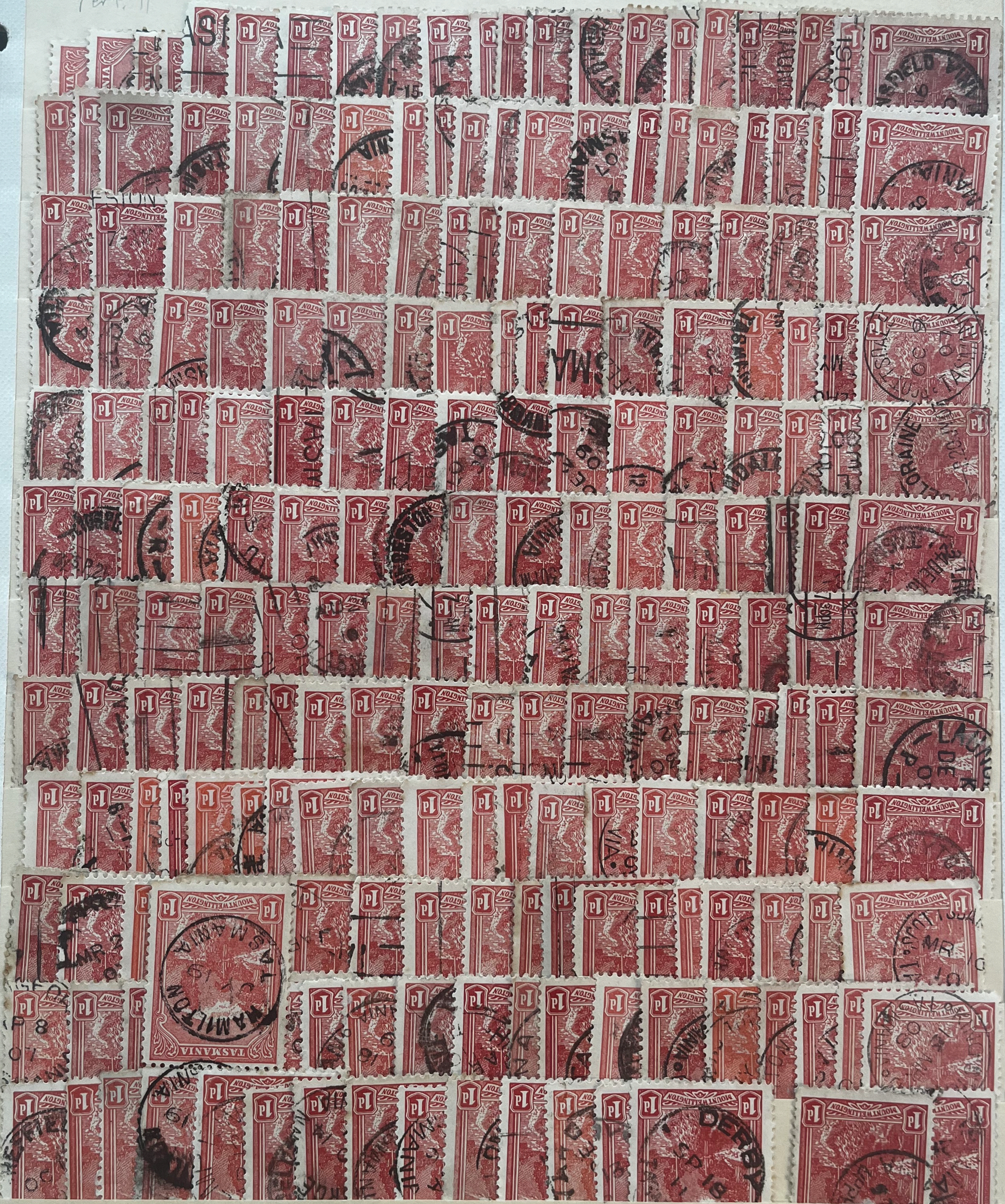
Crown over A
upright
perf. 11



CAPE BARREN ISLAND

Crown/A
inverted
perf. 11

SG 250a w/
Crown over A
inverted
part. II



UPPER CASTLE

WATERMARK
Crown OVER A
SIDEWAYS VARIETIES

12 1/2
Crown
right



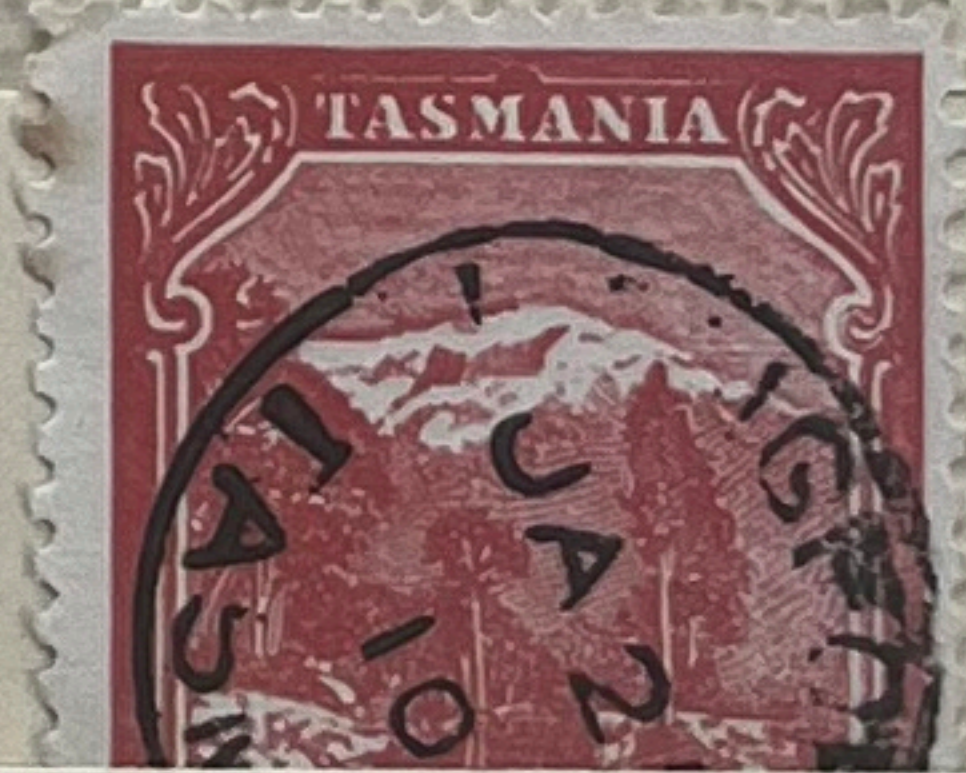
12 1/2
Crown
left



11
Crown
right



11
Crown
left



worn plate

The island was settled by the British in 1803 and was first known as Van Diemens Land. The island was renamed in 1855, but the first stamp issues of 1853-60 bear the earlier name, and it is upon these stamps that the first of the Official Perfins may be found.

The Small Triangle

No information about this from any member. Robson Lowe says that a small triangle was perforated on the stamps of the 1853-60 period, for use on official correspondence, and that it is scarce, and rare on cover.

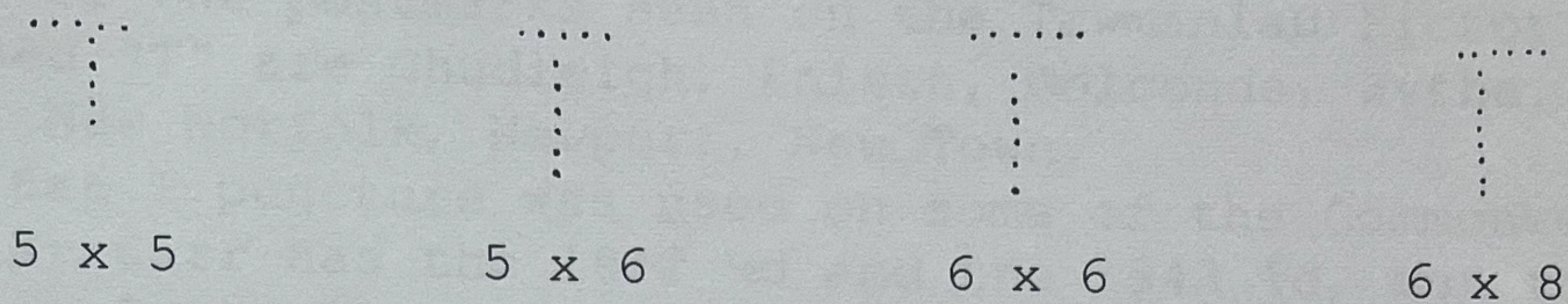
The T Perforations

"In October 1902, the State Government (Tasmania) sought permission to have stamps overprinted 'TS' but, as in the case of Queensland and South Australia, permission for overprinting was not granted. Authority was given, however, in the same month for stamps to be punctured 'TS' but the State authorities subsequently decided to use the initial 'T' only and such punctured stamps were brought into use about the beginning of 1903. At this time Commonwealth Departments were using ordinary stamps and continued to do so until punctured 'OS' stamps were supplied, in 1905, by the Government Printer at Melbourne". (Australian Philatelic Bulletin)

The method used to perforate the stamps with a letter T was a very unusual one. No special die was made, but an old foot operated perforating machine was adapted by removing a number of pins so that a line of holes could be made through each stamp in one direction, then a second line was made to form the shape of a letter T. The operation did not always produce recognisable T's, instead there were perforations looking like the letter 'L' or an inverted 'L', and T's with out the cross-bar (or down stroke). However the stamps were punctured, and the problem of having to deal with stamps of different size and shape was overcome by this simple method.

According to Mr O.G.Ingles the earliest date seen on one of the T punctured stamps is 4 November 1902, and it was postmarked at Fingal.

Many examples may be found on the Tasmanian Pictorial issues of the period 1899 to 1912, especially on the 1d and 2d values. Another collector, G.R.C.Searles, told me that he handled about 1000 stamps with 'T' perforation when he had some 150,000 Pictorials to go through. This is the most interesting period because there is a variety in the number of holes making the letter T.



Above are some few examples of the different punctures to be found. The number of holes in the top of the T is counted first, then the number of holes in the upright stroke.

The following is the complete list:- 4x6, 5x4 5x5, 5x6, 6x4, 6x5, 6x6, 6x7, 6x8, 7x6, 7x7, 7x8, 8x6, 8x7, and 8x8. It is not always easy to be certain of the numbers unless the holes are very clear and are not overlapping, as sometimes happens.

Mr Scarles says that his examples of the 5x4 and 5x5 on the Pictorials come on the 1892-99 issue, mostly on the ½d value. Mr. Ingles records only the 4d value with the 4x6 holes. The 6x6, 6x7, 7x6 and 7x7 seem to have been used on more values than the other combinations.

The T perfins are known to have been used on the stamps of Tasmania as listed below:

Queen's Head in Oval

Watermark: T A S	8d & 9d
V over Crown	9d
Crown over A	8d & 9d

Queen's Head in Circle

Watermark: T A S	½d, 5d, 6d, 10d, 1/-, 5/-, 10/-
V over Crown	1/-
Crown over A	4d, 1/-

Pictorials

Watermark: T A S	1d, 2½d, 3d, 4d, 5d, 6d
V over Crown	½d, 1d, 2d
Crown over A	½d, 1d, 2d*, 3d*, 4d, 6d* 1d on 2d

* = electro and litho. printings

The puncture may also be found on Postcards.

Some of the postmarks seen on the Tasmanian Pictorials perforated "T" are Chudleigh, Enison, Golconda, Hythe, Margate, New Norfolk, Newport, New Town.

The 6x6 T puncture was used on some of the Commonwealth stamps. Mr Carr has the 1942 ½d and the 1943 1d, but the "T" perfins on Australian stamps are usually 5x5. Many issues will have been used by the State Departments, the following list is as reported by those members who returned Worksheets.

<u>Kangaroo</u>	1d red, 3d olive (1915-23) 6d blue (1929-30)
<u>King George V</u>	½d green, ½d orange, 1d red, 1d green, 1½d red (1918-19), 2d red, 3d ultra.(1931) 4d yellow-olive, 2d on 1½d.
<u>King George VI</u>	½d orange, 1d green, 1d maroon, 1½d green, 2d scarlet, 1/- grey green.
1942-	1d, 2d, 2½d, 3d
1950-	2½d, 3d
<u>Queen Elizabeth Commemoratives</u>	2½d, 4d, 5d, 2/- 1934 2d Macarthur, 2½d Lawson, 2½d Mueller, 2½d 1950 Stamp Centenary, 3d Latrobe, Q.E. Coronation 3½d, 2/-, 4d Centenary of South Australia, 3½d Swan, 4d Broken Hill.

The OS perfin used by the Federal Departments dates from 1904 (September 27th is the earliest date seen up to Now) Mr Ingles says that the stamps are scarce on cover, but are easier to find in mint state than the "T" perforated issues where they are very elusive when mint.

The OS stamps recorded are;

On the Queen's Head in Oval

8d (Wmk.Tas), 9d (Wmk. V over Crown)

On the Queen's Head in Circle

10d, 1/-, 2/6, 5/-, 10/- all Wmk. Tas.

1/- Wmk. V over Crown.

On the Pictorials

Wmk. Tas, 3d, 4d, 5d, 6d.

Wmk V over Crown ½d., 1d, 2d.

Wmk Crown over A 1d, 2d, 4d, 6d.

Readers are referred to "Tasmania - The Perforated Officials and Other Punctures", by O.G. Ingles. Published in "Philately from Australia" December 1967.