





ज्युडीशयल
No 21
एक



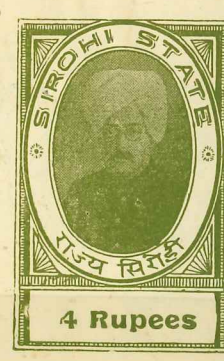
9232
ज्युडीशयल स्ट
No 152
दो आना



ज्युडीशयल स्टाम्प
No 300
नवील लामचन्द
ला शहा
BChowdhary
आठ आना



ज्युडीशयल
No 258
दो



ज्युडीशयल स्ट
No 529
चार रुपया



ज्युडीशयल स्टाम्प
No 531
पांच रुपया



ज्युडीशयल
No 28-3-43
दस रुपया

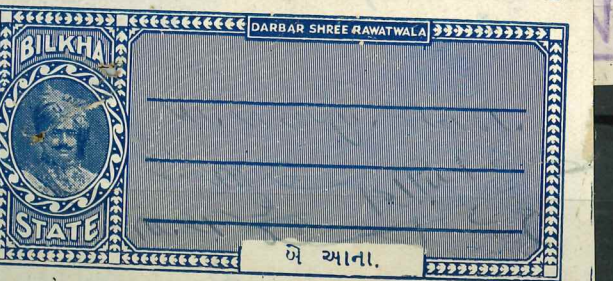
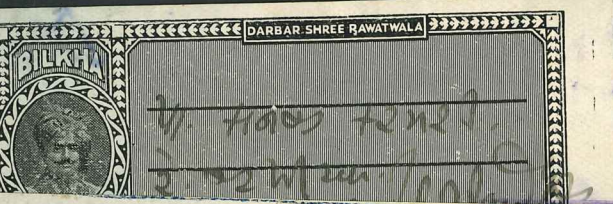


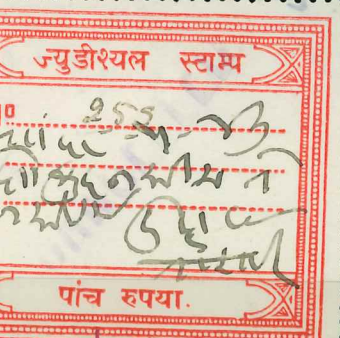
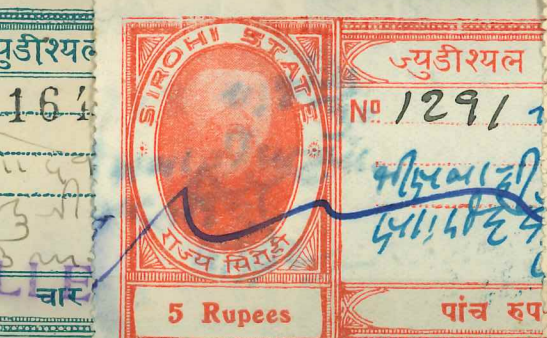
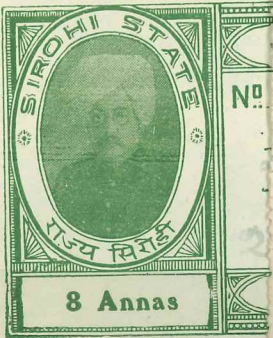
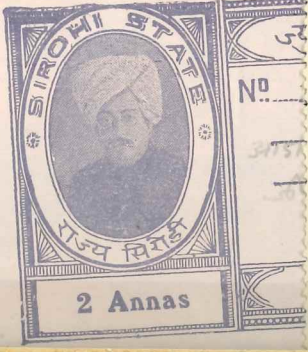
ज्युडीशयल स्ट
No 1869
वीस रुपया

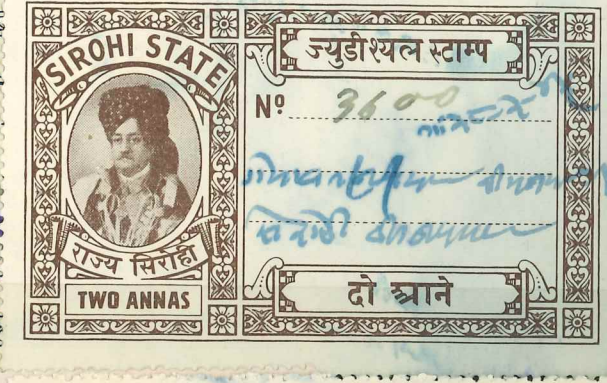


ज्युडीशयल स्टाम्प
No 297
पचास रुपया

DEWAS 2nd WAR CONTRIBUTION. FULL SET. 5















No.
Date
Vendor



22 - 1
22 - 1



2192/2



30 D'AYS SIGHT

BANGALORE-560001

PSPS.....

Date.....

ON OR BEFORE DATE..... PLEASE PAY TO

THE.....

THE SUM OF RUPEES.....

~~₹~~ **IX**

BEING THE VALUE OF THE GOODS RECEIVED AS PER

OUR INVOICE NO **1895** DATED.....

WAY BILL NO..... DATED..... OF.....

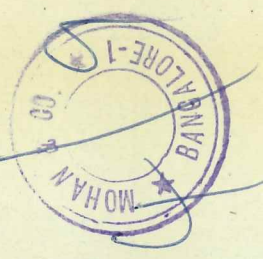
TO, M/s. For **MOHAN & CO.**



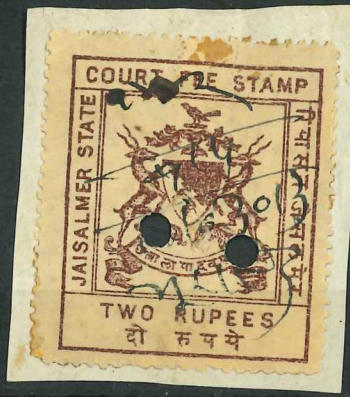
Partner/Manager
[Signature]

NOTE TO BANK

Please Return Documents after Due Date. If Payment Delayed please Collect Interest 18% P.A.









१०० २५ १०० ॥

१०० २५ १०० ॥

१०० २५ १०० ॥

१०० २५ १०० ॥

१००

१००

१००

१००

So. (3)

So. (3)



5
13
20

6
14
21

7
15
22

8
I/9 16(2)
23

12/03/05



IV
III
II
I

Make up.

Date

Shade.

To plate.

~~Printed~~

A

B

1.

□ 1/4A →
overleaf

2.

colour?

3.



5.



COUNTRY
ISSUE
CAPITAL

①



all

1 1/4 W2

W2

W2

②



kin W2



En

5

Lot 361

COUNTRY
ISSUE
CAPITAL



3



14 x 15 1/2

wz

5



15 1/2

wz

4



15 1/2

6



7



NO. 157
Copyright 1950

En

7



COUNTRY
ISSUE
CAPITAL

Madro Rao
Saidli



C. 192
1924



(1925)



(1927)

NO. 157
Copyright 1950

Ed



COUNTRY
ISSUE
CAPITAL

George Jivaji
Ran Sankar



1925 - 1961



1927 (?)



1938

p. 11

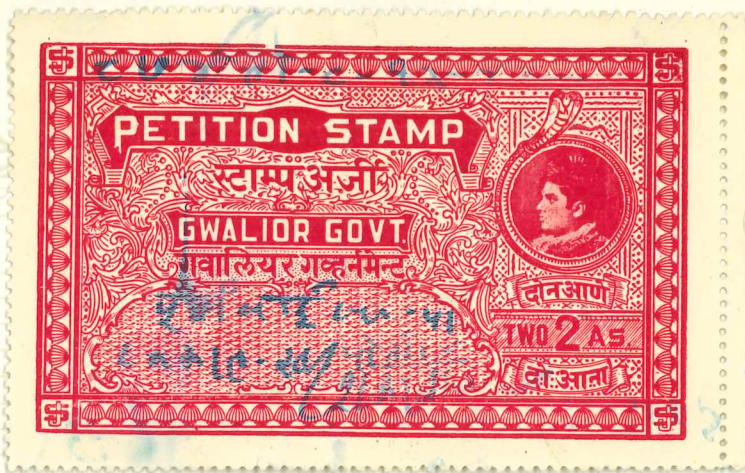


1928

Copyright 1950 NO. 157

Ed

3



3



1955



1950



1957

NO. 157

Copyright 1950

Ed.

3

1918 - 1932

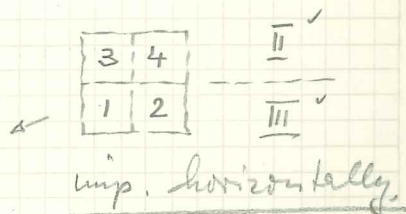
Daulat Singh



perf. 14 1/2



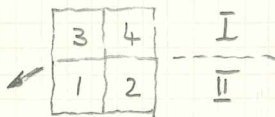
I
[3]



[4]
III

(left) SAWA ANA (SG) F4

[1] III(?)



1 1/2 ANNA / 19

"SAWA ANO"

(SG) F3 perf. 11.25

32
1960
Reliant
Printed in England S100

perf 11.9

(= 12)



COUNTRY
ISSUE
CAPITAL



p. 14 **

p. 14 *



p. 14 (*)

p. 15

p. 14

c. 19

NO. 157

Copyright 1950

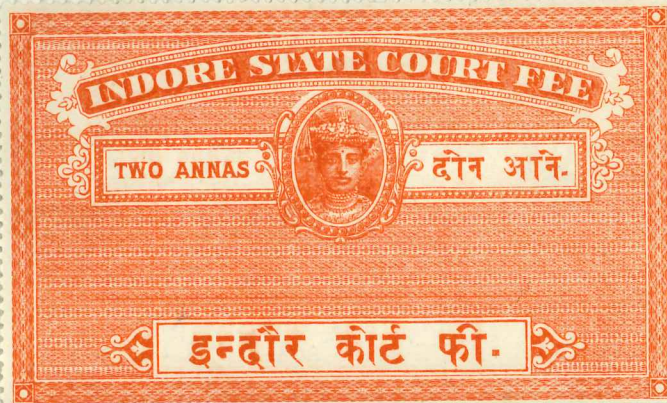
E.H.

5

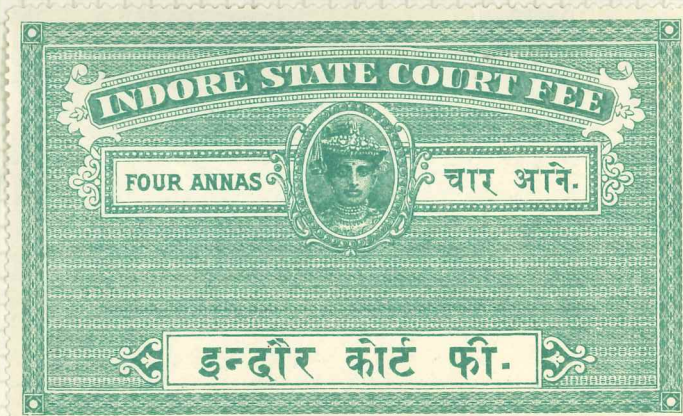
COUNTRY
ISSUE
CAPITAL



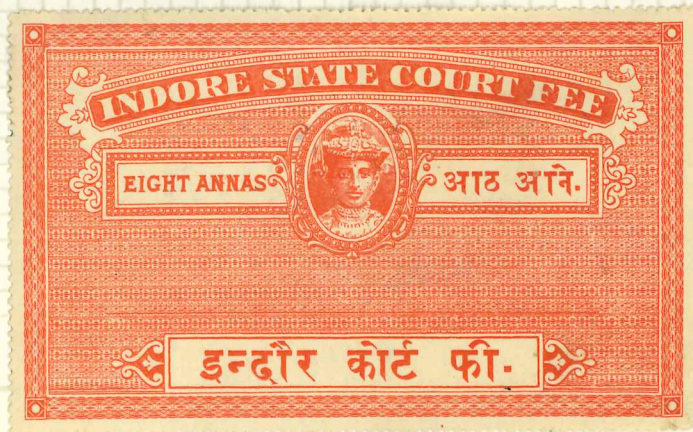
p. 12 1/2 "SPECIMEN"



p. 12



p. 12



p. 14 (no gum)

End



p. 14



p. 14



पॉस्ट, प. 12
७ ११

p. 12



1927

p. 14



p. 12 x 12 1/2



COUNTRY
ISSUE
CAPITAL

C. 190
1928



1925



p. 14

p. 12

12

12 $\frac{3}{4}$

p. 12 x 12 $\frac{3}{4}$ x 12 x 12

12

NO. 157
Copyright 1950

Ed



faded (?)

p. 12 1/4 x 14 = 1926



1925

p. 14



p. 12 1/2



p. 14

NO. 157

Copyright, 1950

End



P. 11

1927



1926

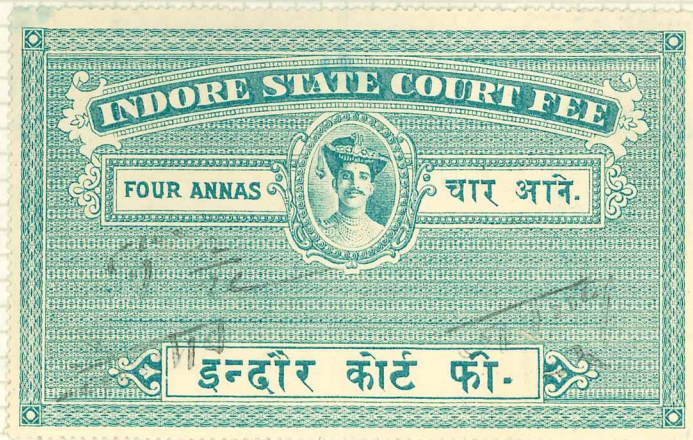
P. 14

P. 14



P. 11 x 11 1/2 1927

P. 14



P. 14

NO. 157

Copyright 1950.

COUNTRY
ISSUE
CAPITAL



p. 11 1/2

Yeshwant Rao
(T2)



split along

proof



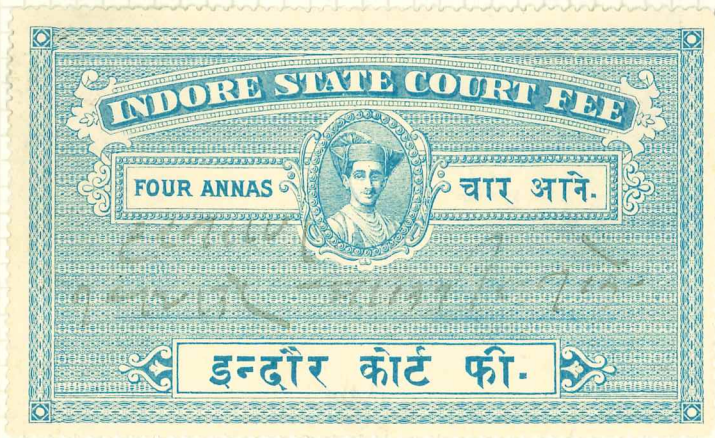
p. 11

NO. 157

Copyright 1950

En

4



c. 1928 -
38
(1934).

© 1934

p. 14

all p. 14

(rough) → 2

© 1931

all p. 14

© 194.

→ 2

1947

1932

p. 14

p. 14

p. 11 1/2

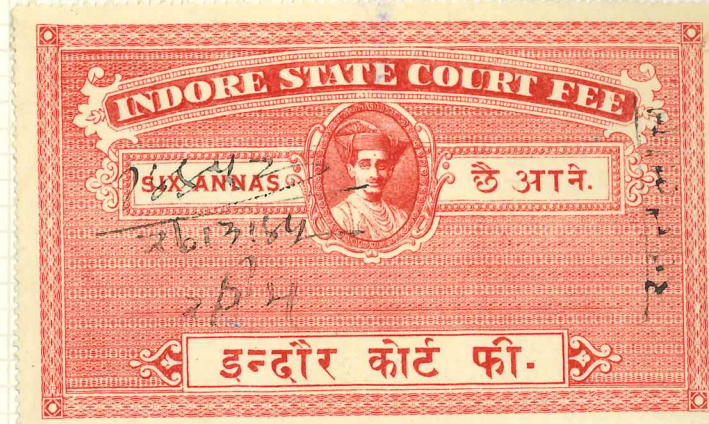
→ 2

p. 13 1/2

COUNTRY
ISSUE
CAPITAL



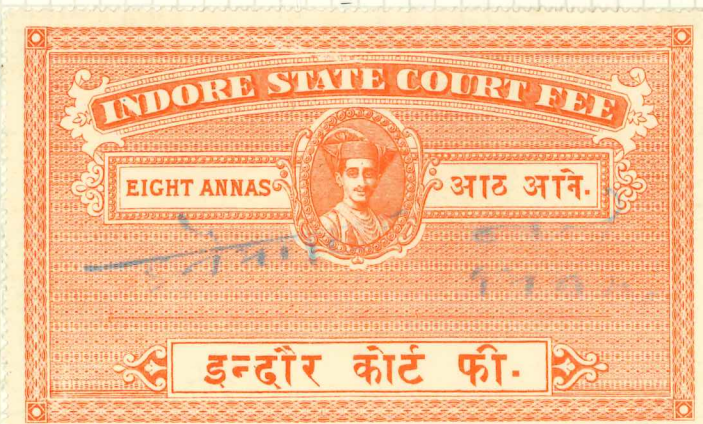
p. 13 3/4 @ 1934



p. 14 @ 1945
p. 13 1/4 @ 1945



p. 11 1/2 @ 1931



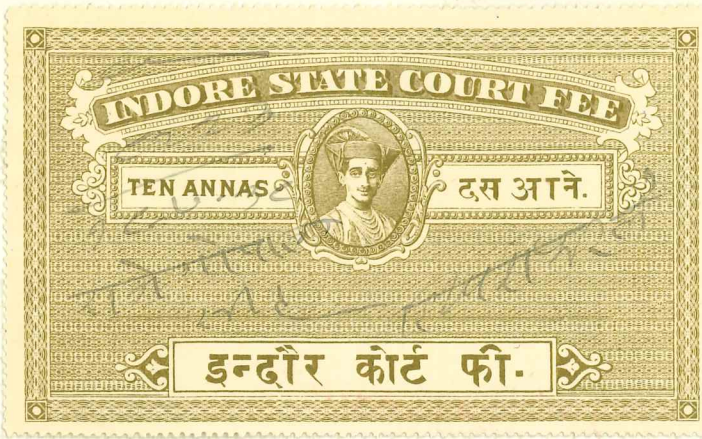
p. 14 @ ?



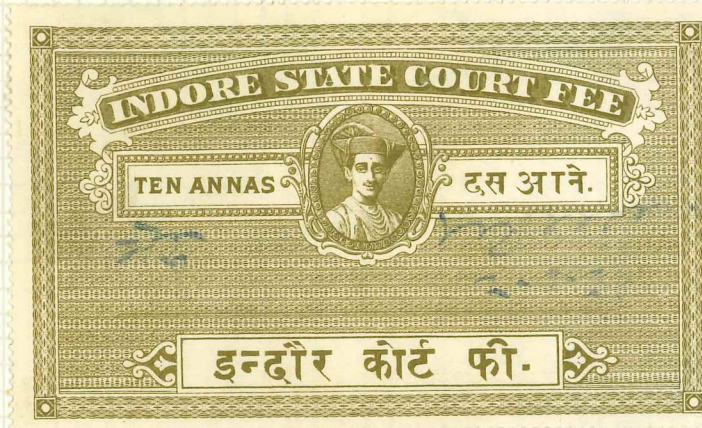
p. 13 1/4 @ 1943

p. 14 @ 1933

p. 14 1/2
p. 13 1/2 x 14 1/2

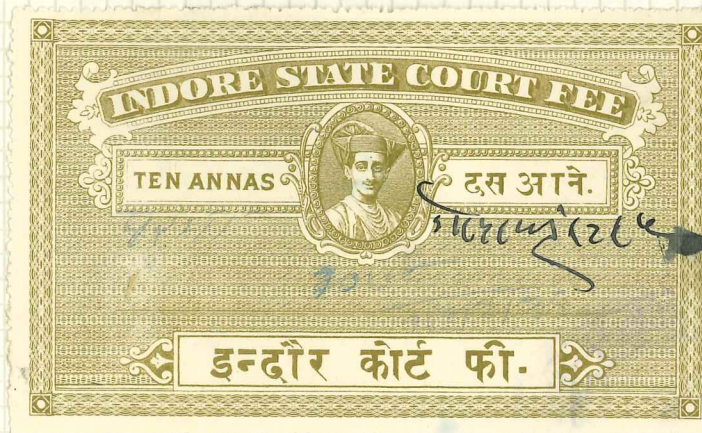


p. 13 1/2



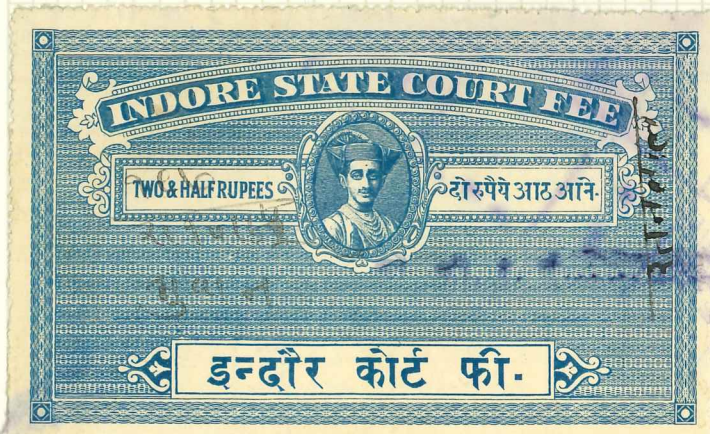
p. 13 1/4

(1928-33)

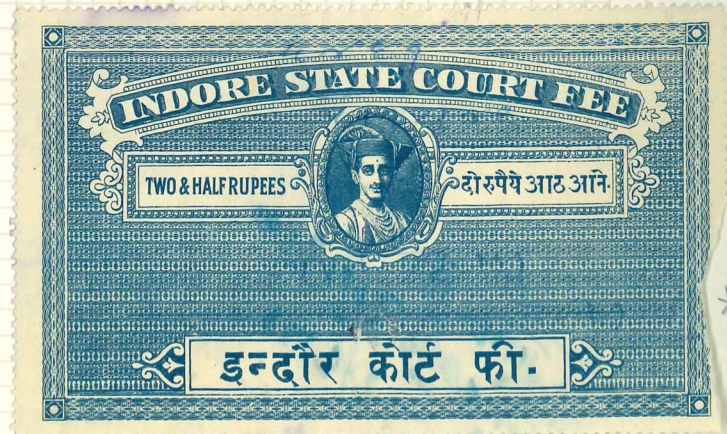


p. 14

(1935)



p. 14

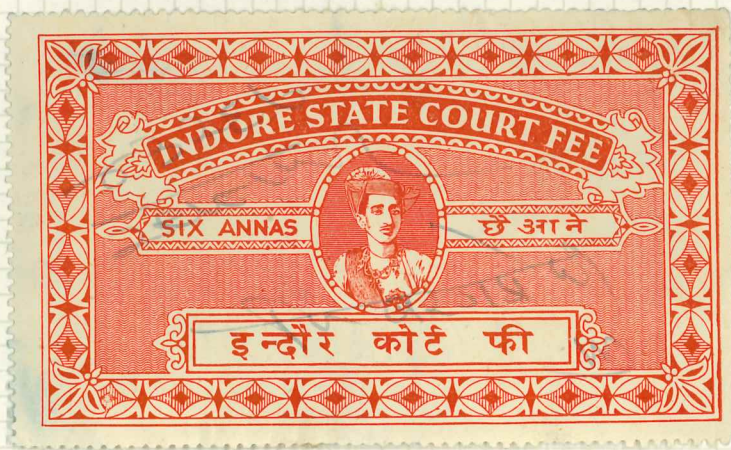
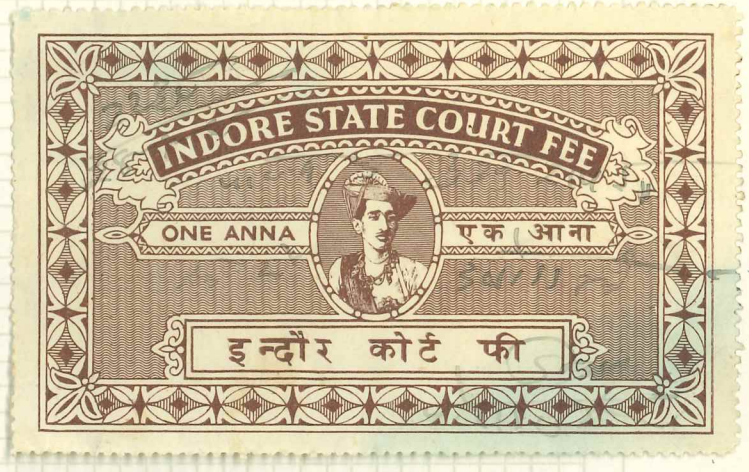


p. 13 1/4

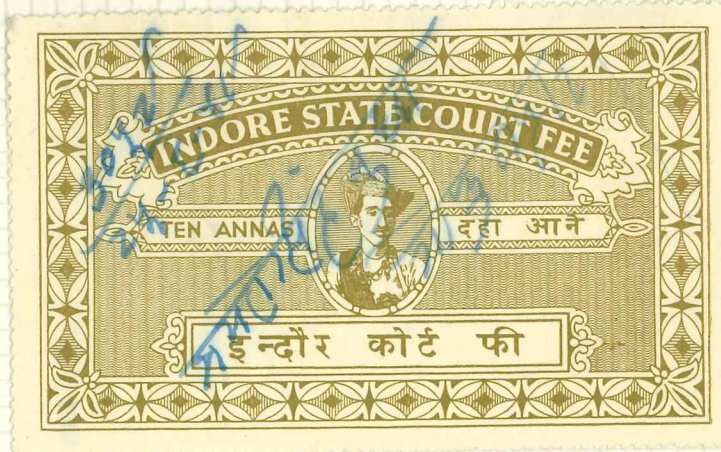
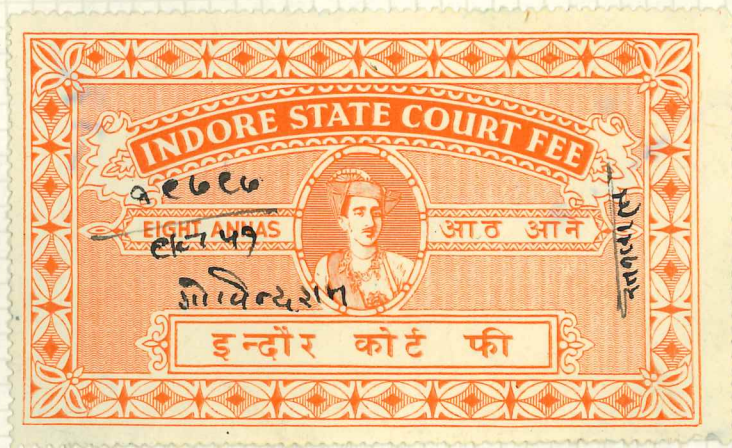
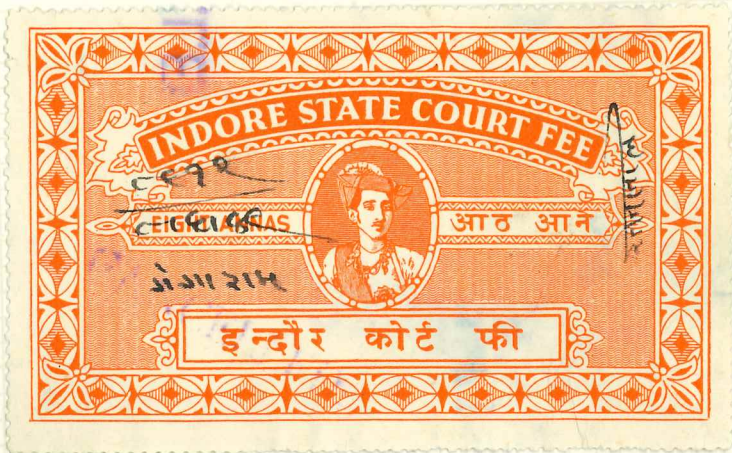
COUNTRY
ISSUE
CAPITAL



COUNTRY
ISSUE
CAPITAL



COUNTRY
ISSUE
CAPITAL



c 1940
194

NO. 157

Copyright 1950

Ena

COUNTRY
ISSUE
CAPITAL

JAIPUR

dupl. 15mm ✓

15½



15½



mint

p. 12
(11.9)

P12



P12



- 15½ -

R. B.

p. 12
(11.9)



p. 12 (11.9, rough)



JEYPURE (Zamindari?)

p. 14, Wm. Cotton

1880

Wm. Cotton

COUNTRY
ISSUE
CAPITAL

ovpt. 15mm (N 15 1/2)

B. B.



mint

p. 11

p. 11

15



mint

p. 12



p. 12

p. 12

15 1/2

15 1/2



p. 11

p. 12

15 1/2



p. 11

no W17

EIA



COUNTRY
ISSUE
CAPITAL

ovpl. 15 1/2

ovpl. 15 1/2

RED
red



p. 72

Wm. DORI



ovpl. 15 1/2

p. 72

3x ovpl. 15 1/2



p. 72

15 1/2



8/5
B.B.

15 1/2



p. 72

others [no way]

NO. 157
Copyright 1950

Ed



COUNTRY
ISSUE
CAPITAL.



12 (11.9)



p. 11



p. 11

p. 4
← imperforate margin



12



12



12



12



12



12



12

Wh. ?

A.B.



12



12

12

12

End



JOYNTILAL KOTICHA,
STOCK EXCHANGE BLDG.,
FORT, BOMBAY, 1.

Registered with the Company.
Broker.

Dated _____

Power of attorney No. _____

Broker's signature

OR

Seller's signature _____

Balance certificate required / not required for shares.

1. The form must be carefully and legibly filled in and the name of the Company inserted in the space provided at the head of the Deed.
2. Names of the parties in the body of the transfer must be in full stating whether Mr, Mrs, or Miss.
3. No erasure is allowed. Any corrections or alterations must be initialled by both the transferor and the transferee.
4. All signatures by thumb impressions, marks, etc., must be verified by a J. P. or a Magistrate.

INSTRUCTIONS

COUNTRY
ISSUE
CAPITAL



Naazik
pof 74

Luhadio present

2 Rs

on

document

COUNTRY
ISSUE
CAPITAL



prof. 14 as
other Nesik
stamps



Lu.



D.B.



16-3-4(46?)

Lu.



Provisionals
issued before the
definition of 2As?

Lu.



Lu.

≥ 1946 onwards (2)

COUNTRY
ISSUE
CAPITAL

PROVISIONALS



CF
SILKAR

P & Revenue



15 mm

sans-serif 7



15 mm



18 mm

18 mm

15 mm



14 mm



14 mm



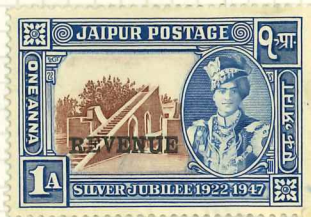
COUNTRY
ISSUE
CAPITAL



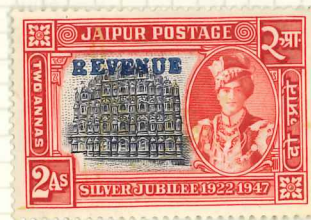
2.7.



13 $\frac{1}{2}$ mm
(1 $\frac{1}{2}$ mm)



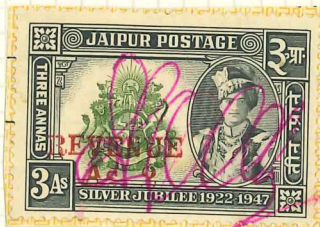
14 mm
(2 mm)



> 14 mm



COUNTRY
ISSUE
CAPITAL



V
A



18 mm V
A D



V (3)
A



18 mm

V
A O

no stop

CF ~~Wink~~
 not ~~marked~~
 cancelled



16 1/2 (pink)



17



17

(P)



17



17



111/94 Mittel

17 1/2

← P & R



17 (orange)

Postage only



21

(P & R)



21

(P)



(Block) = NASIK ?



16 1/2 (pink)

16 1/2

17 (orange)



17

16 1/2

17

17

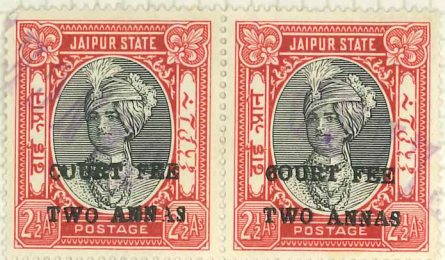
17

25/7/51

NO. 151
Copyright 1950.



16 1/2



17



17 (orange)



17 (orange)



17 (red)

17
17

17
46 1/2
17

} = 8A5



P/

P. & R



17

17

17

17 (large)

17 (large)



17

D. B. (4x4) 16 As 1 Re



17

16 17

17

17

17



17



17



17



17

(2x4) 8 As D. B.



17 (small?)



17



17



#

17



17

"COURT FEE" inverted.

End



Relevant
Made and Printed in England S107



16.5

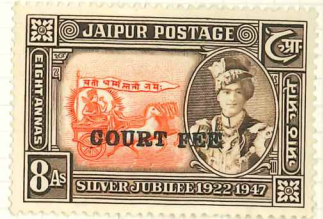


17

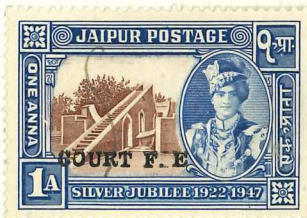
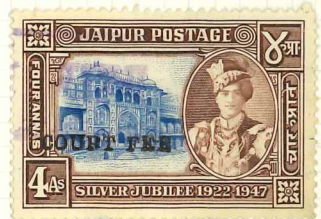
12 (small)



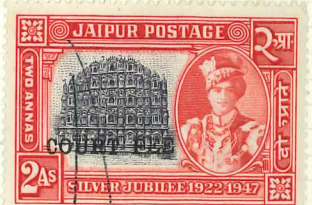
16.5



12 (small)



12



12



12
12



16.5

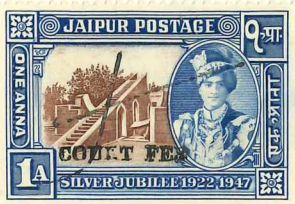
SIKAR (4)
|| handstamp ||

17

COURT
ISSUE
CAPITAL 17



76^r small



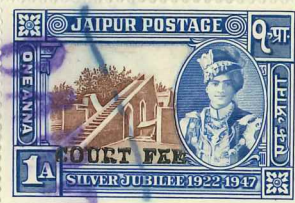
17 (small)



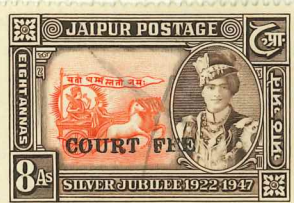
17



17 (small)



17



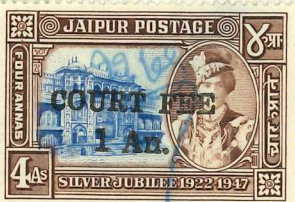
17 (small)



17



21



21



21



21

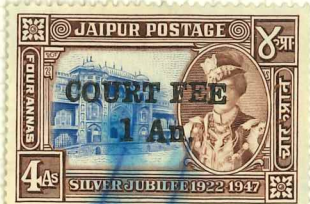


21



21

COURT
1



21 (→)



COURT
1

En

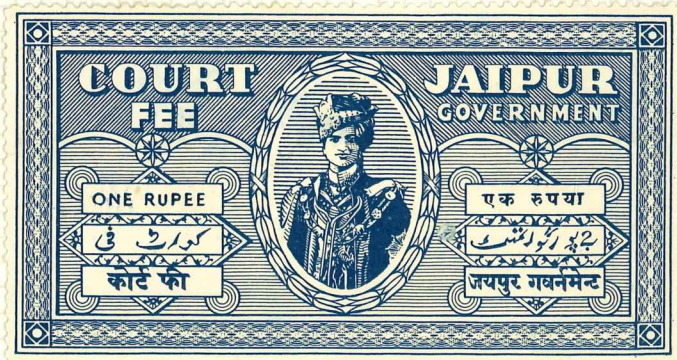
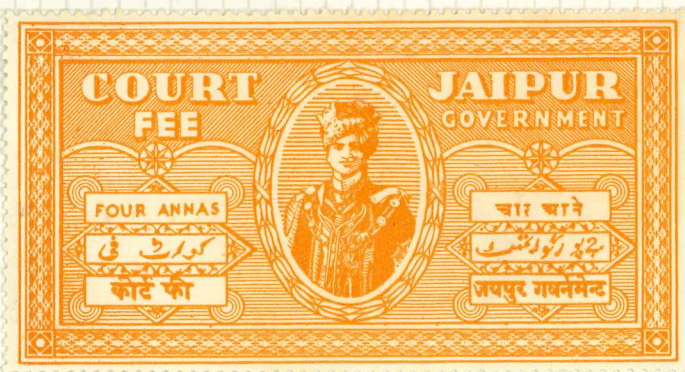
mint



COUNTRY
ISSUE
CAPITAL



post 17



NO. 157

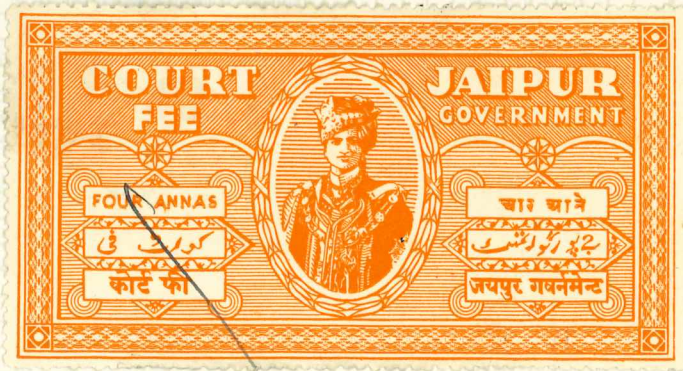
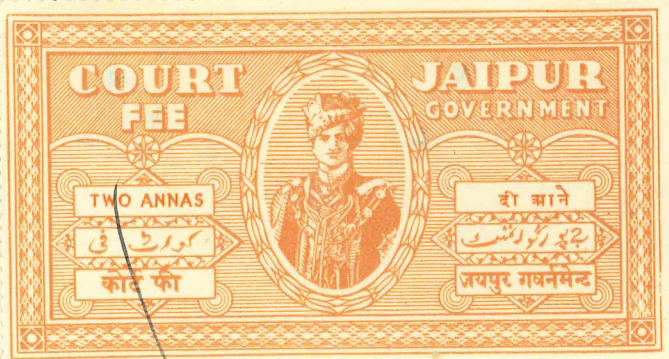
Copyright 1950

Ed

COUNTRY
ISSUE
CAPITAL



One Plate for
all values
printed in different
colours.
overprinted will
value!



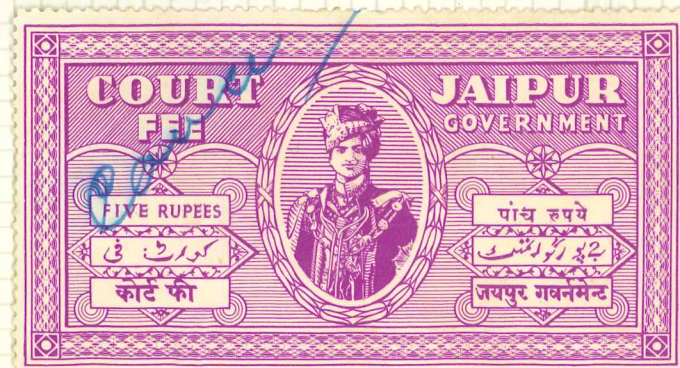
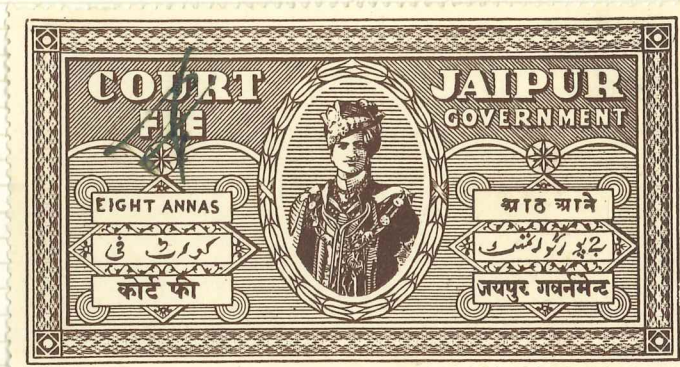
(Einkaufszettel mit
nicht aufgeben!
(79, 80)

Value
"FOUR ANNAS"
displaced.

Einkaufszettel

in Karte(??)
199

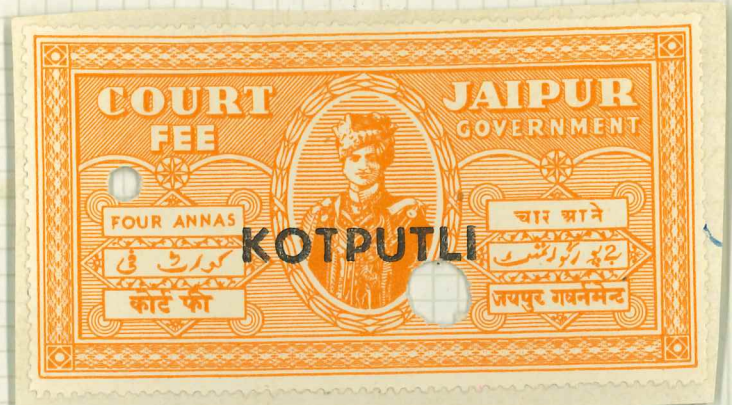
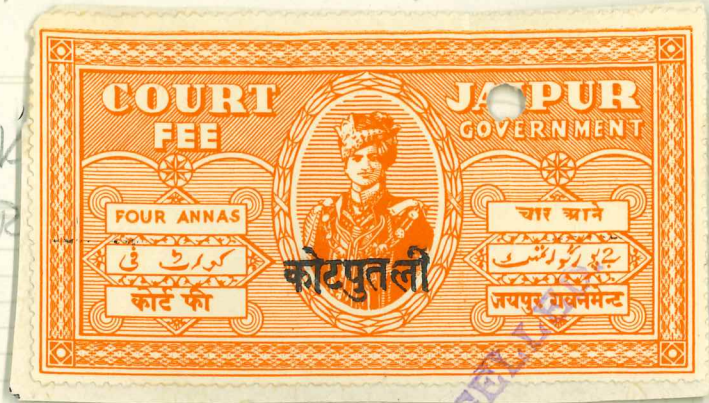
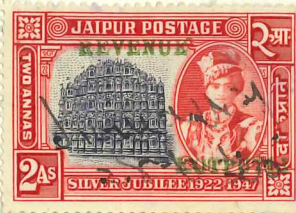
COUNTRY
ISSUE
CAPITAL



Edi

KOT PUTLI and KHETRI (same Rejs)

COUNTRY
ISSUE
CAPITAL



© 1940

KHETRI COURT FEE
 ONE ANNA
 खेतड़ी कोर्ट फी.
 21733
Jaswanti

KHETRI COURT FEE
 TWO ANNAS
 खेतड़ा कोर्ट फी.
 0178
Jaswanti

KHETRI COURT FEE
 FOUR ANNAS
 खेतड़ी कोर्ट फी.
 78487
Jaswanti

KHETRI COURT FEE
 EIGHT ANNAS
 खेतड़ी कोर्ट फी.
 60259
Jaswanti

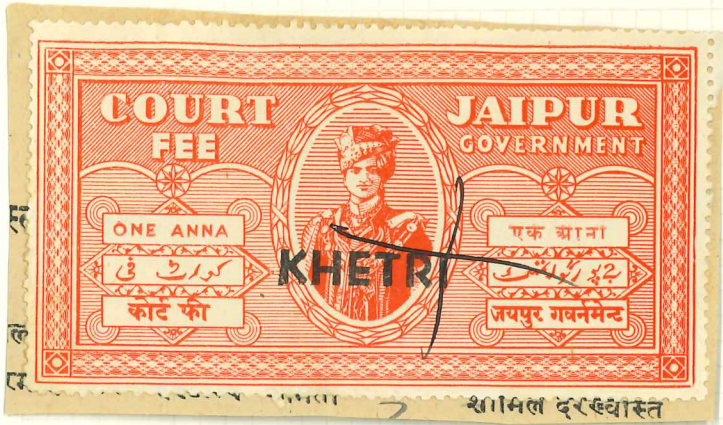
KHETRI COURT FEE
 ONE RUPEE
 खेतड़ी कोर्ट फी.
 19082
Jaswanti

KHETRI COURT FEE
 TWO RUPEES
 खेतड़ी कोर्ट फी.
 1202
Jaswanti

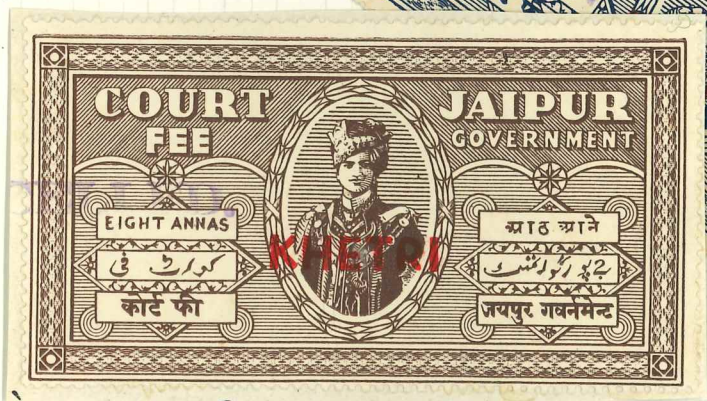
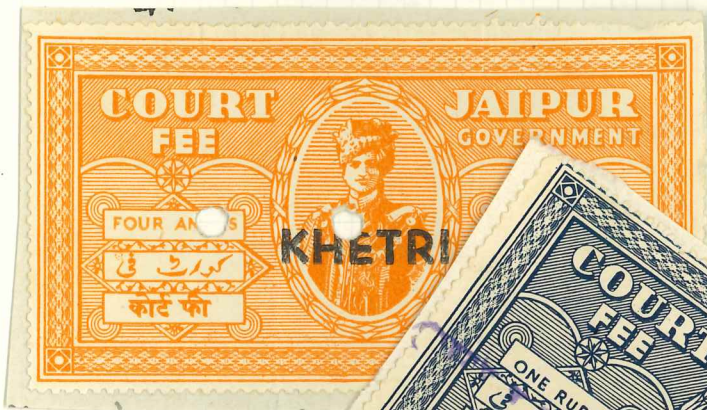
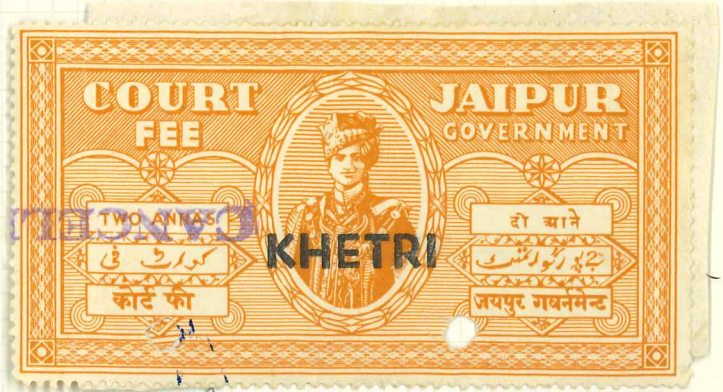
KHETRI COURT FEE
 FIVE RUPEES
 खेतड़ी कोर्ट फी.
 3822
Jaswanti

KHETRI COURT FEE
 TEN RUPEES
 खेतड़ी कोर्ट फी.
 1741
Jaswanti

KHETRI



شامل درخواست



Retreat
Made and printed in England S.100

COUNTRY
ISSUE
CAPITAL

SIKAR



-duplicates-

Court Fee 17 1/4 = Jaipur

0614143



1A

2A

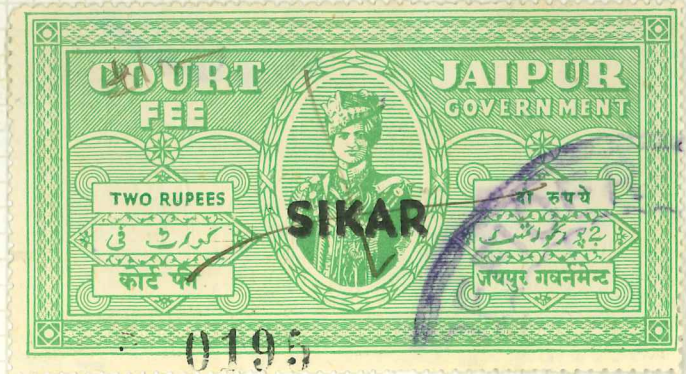
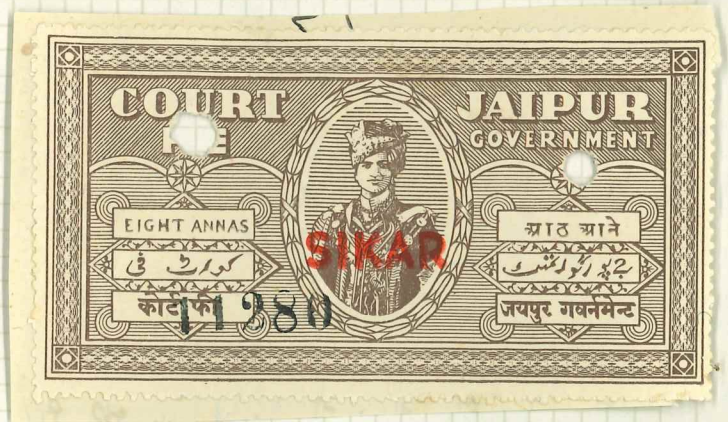
2A



Copyright 1950 NO. 157

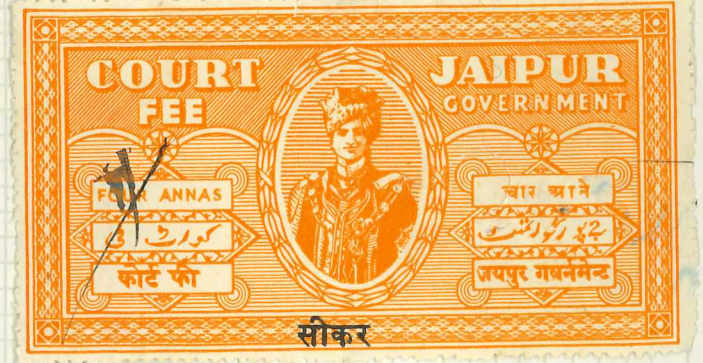
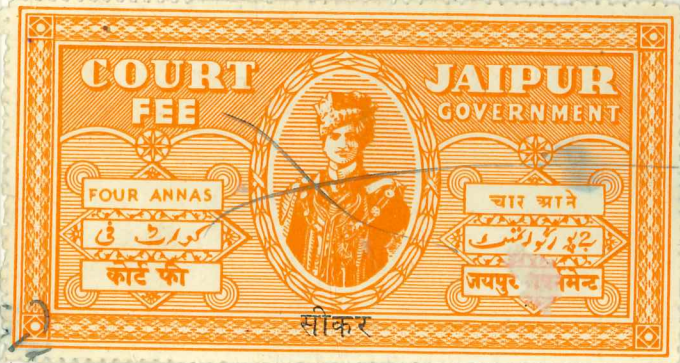
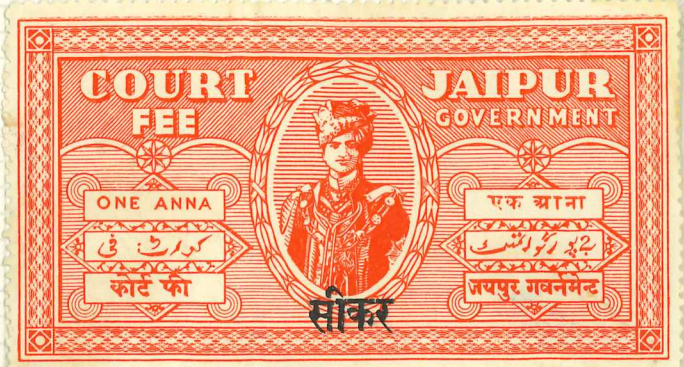
COUNTRY
ISSUE
CAPITAL

SIKAR



COUNTRY
ISSUE
CAPITAL

SIKAR



SIKAR (H.S.)

[
 Wm
 or
 over-lined
]

En

10

Copyright 1950 NO. 157

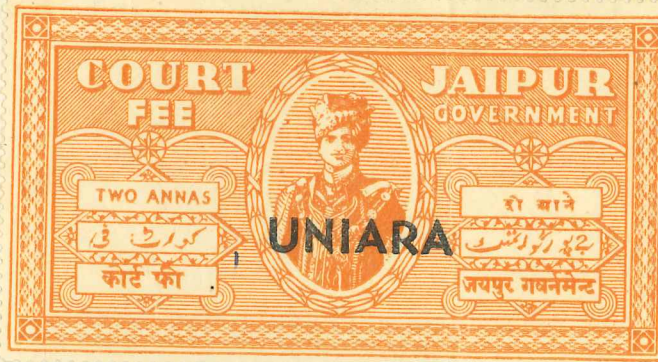
Post 364

COUNTRY
ISSUE
CAPITAL

UNIARA



1.3.
1952



UNIARA

24

वाकिदमत जनाब इन्स पेक्टर सा -
कर्टम एन्ड रेक्स साइज सप्लिया
तार

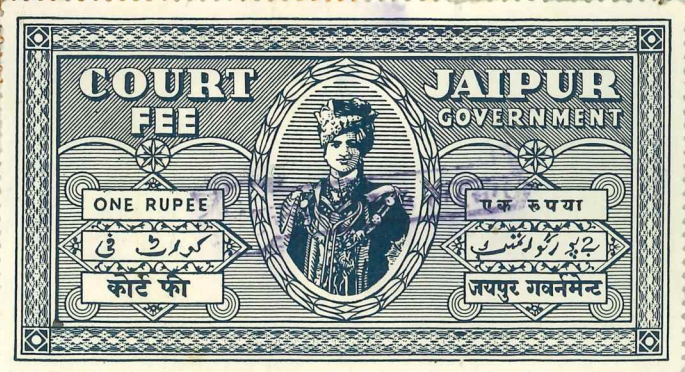
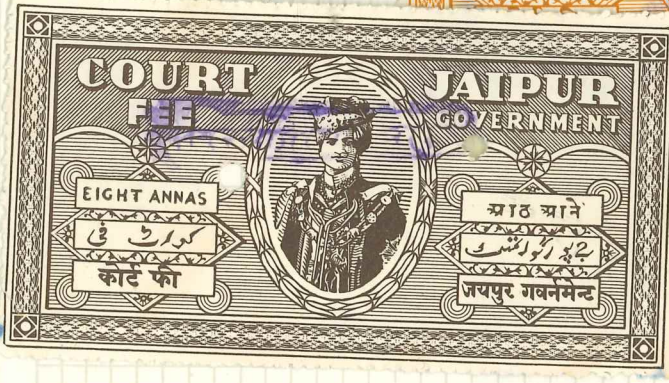
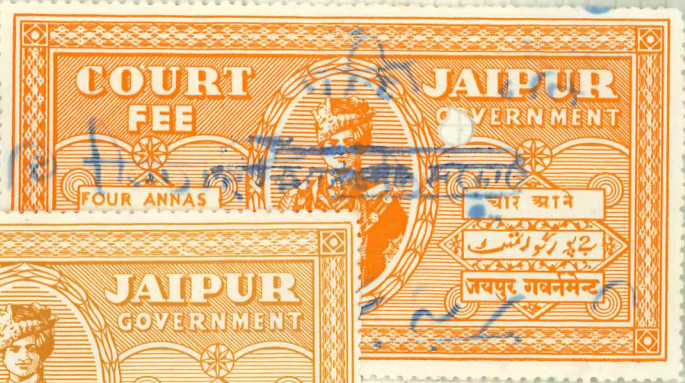
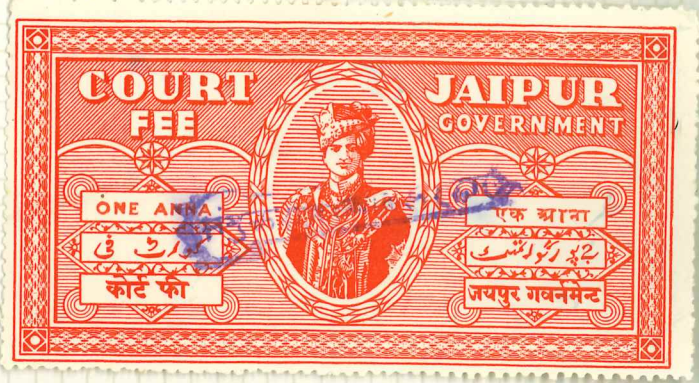
गरीब घर घर सजापत ,

जनाब आल्लो

गुजारिश है कि - दूरी कलास सा उने कारी ची घर ^{रस} अल्ले मव शी -
को जो पागड़ी वासो - जरावे घरसात मे मेरे पहां वह रहवापुा धार -
बाद घरसात दे वह रुद मेरे पहां से लेगपुा जिसा के बाकत रण
नमदीर प.प.सा मवले है" जसाल इपारे फां मवे शियां अरुसा

COUNTRY
ISSUE
CAPITAL

RAJASTHAN



NO. 157

COPYRIGHT 1950



COUNTRY
ISSUE
CAPITAL

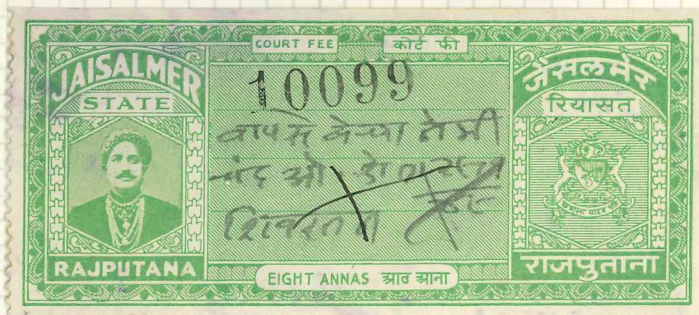
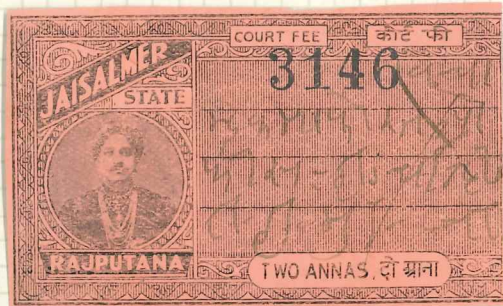


NO. 157
Copyright 1950

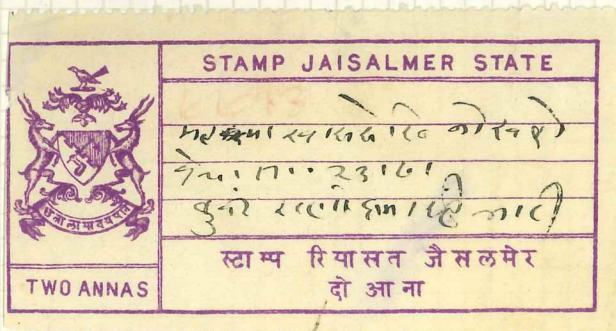
Ed



COUNTRY
ISSUE
CAPITAL



29/1/48



23/7/... miss

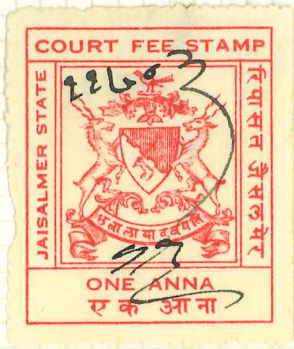
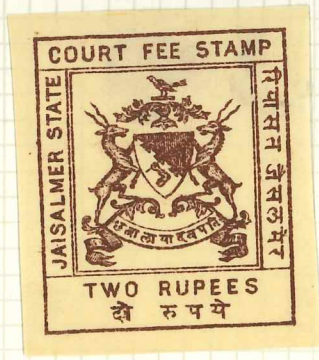
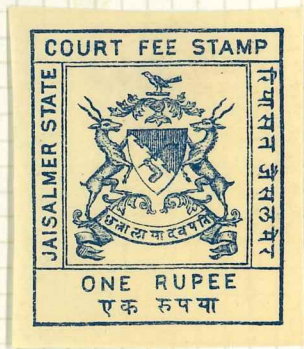
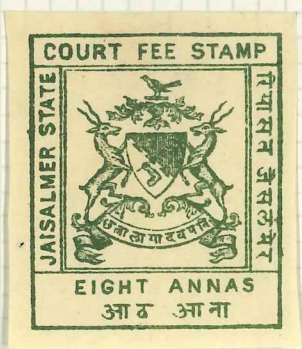
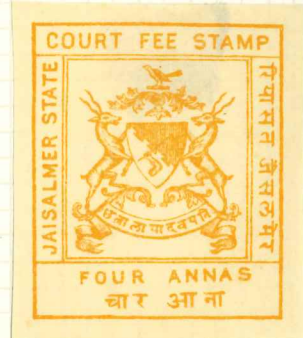
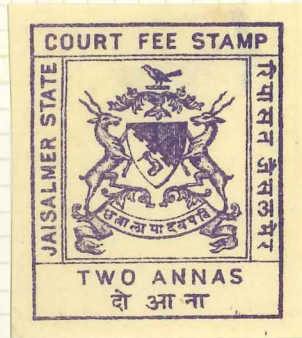
NO. 157
Copyright 1950

Ed



COUNTRY
ISSUE
CAPITAL

1947

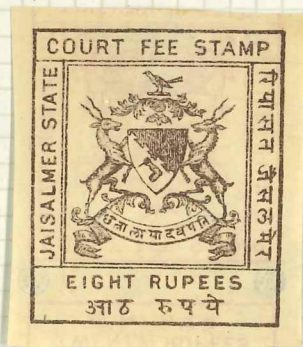
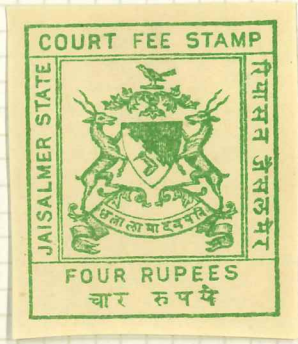


NO. 157

Copyright 1950



COUNTRY
ISSUE
CAPITAL



Part of
20 rupees
on
reverted
8 rupees

NO. 157

Copyright 1950

Edi







कार्तिका हाई कोर्ट,



2002

2727



राज किरान न्यायपालना दंड ३

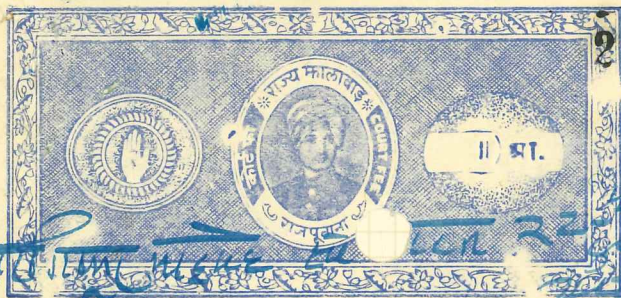
2002

2461



राज चंद्र लाल न्यायपालना दंड ३

२०५९



राज किरान न्यायपालना दंड ३





Reliant
Made and Printed in England S100

(R)



COUNTRY MEWAR
ISSUE
CAPITAL (Revenue)

← Court Fee Postmark !

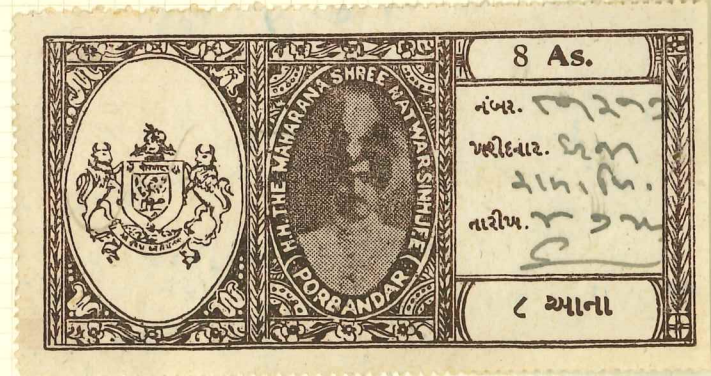
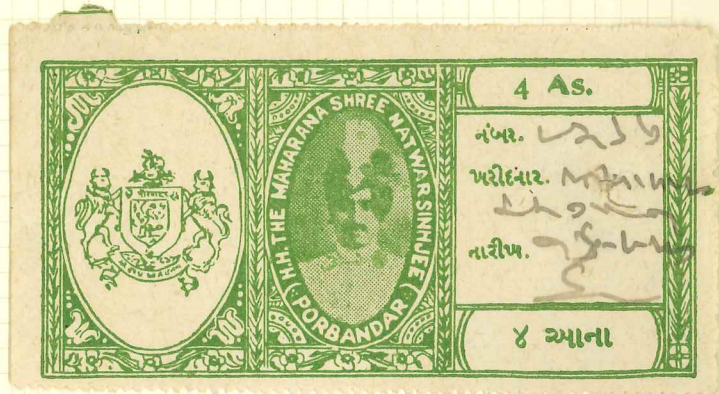
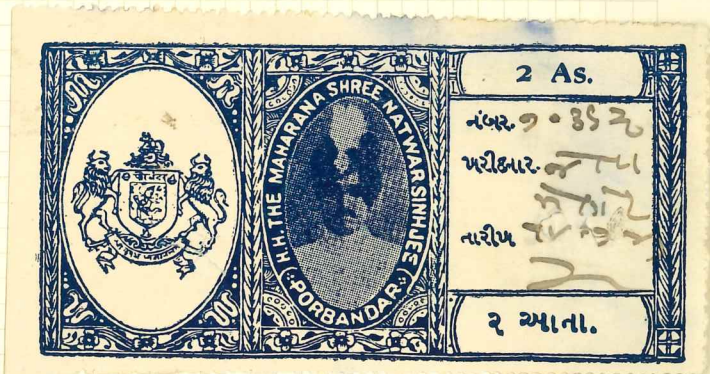


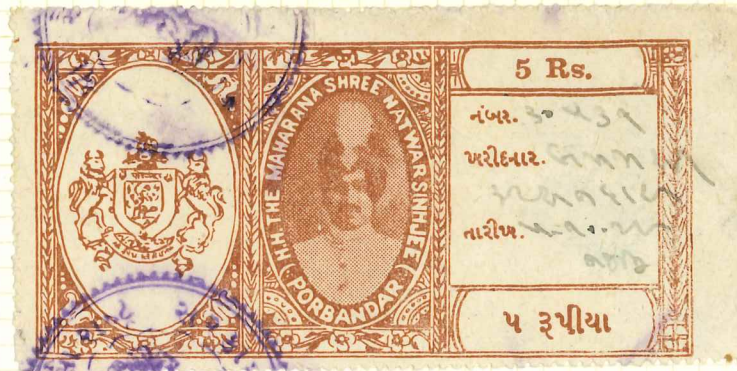
NO. 157

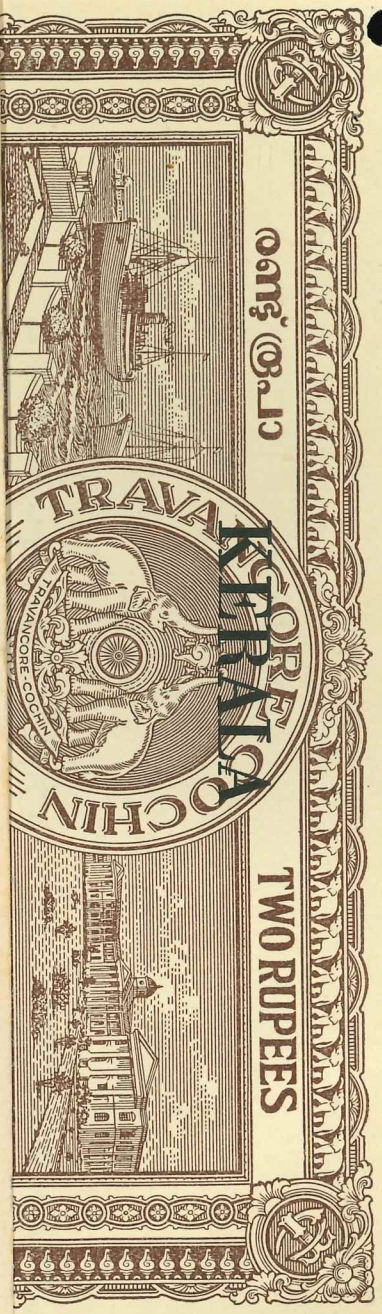
Copyright 1950

Ein

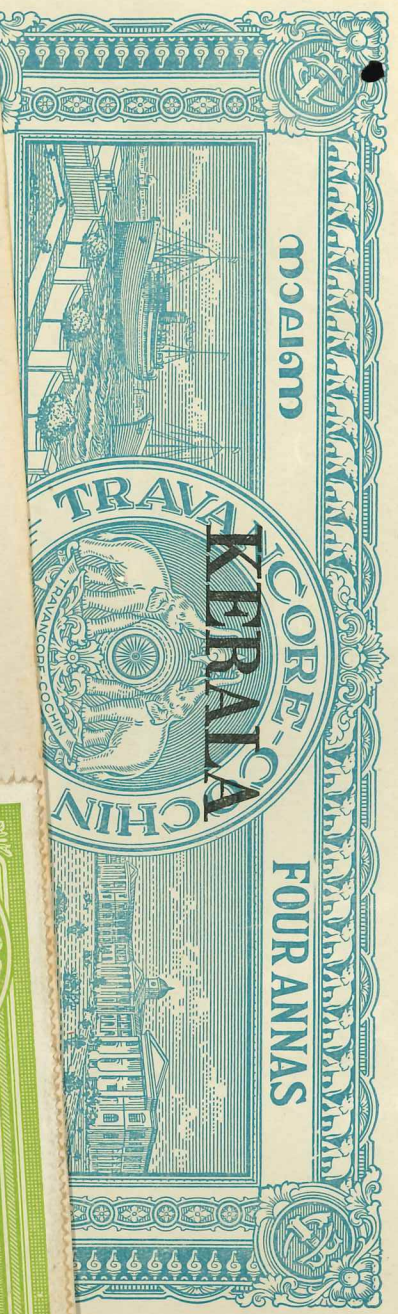
Ein







(2)



5





2



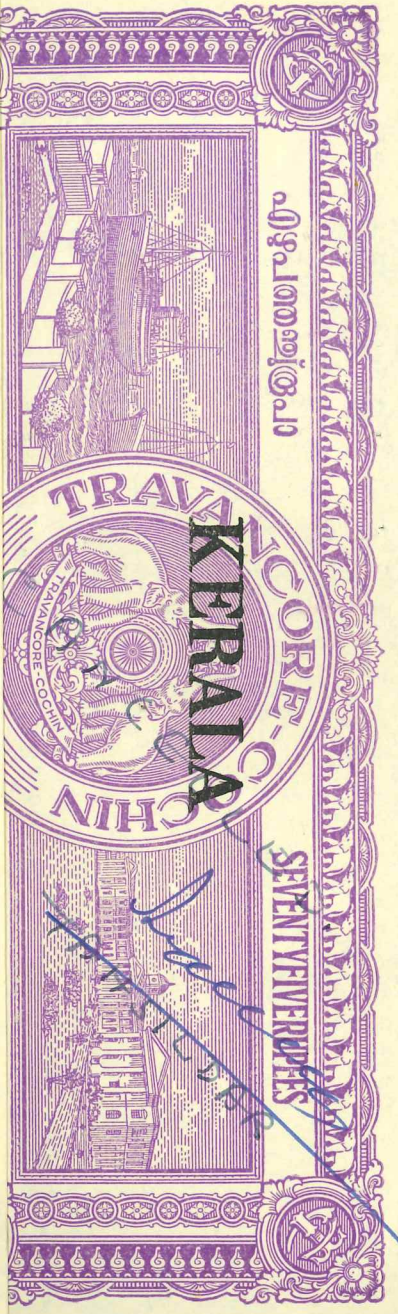


2

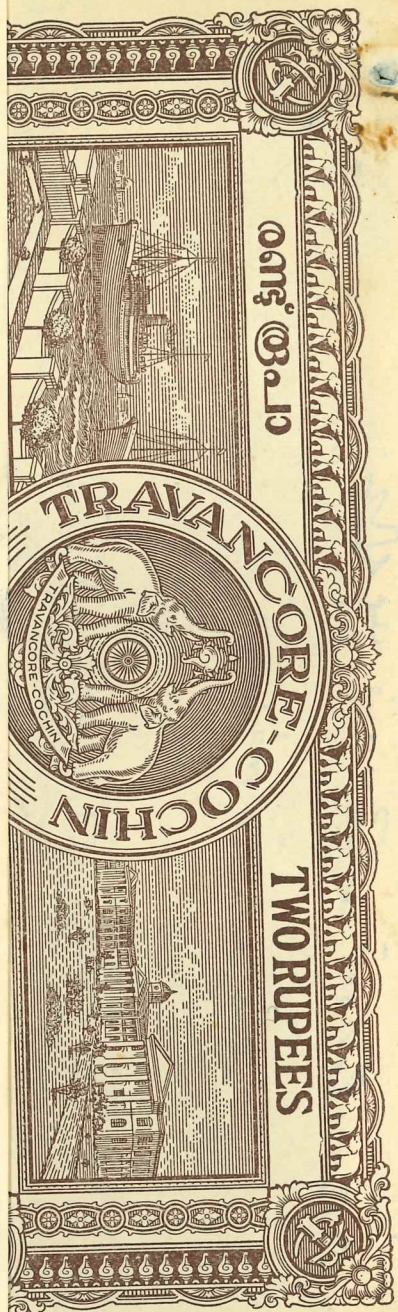
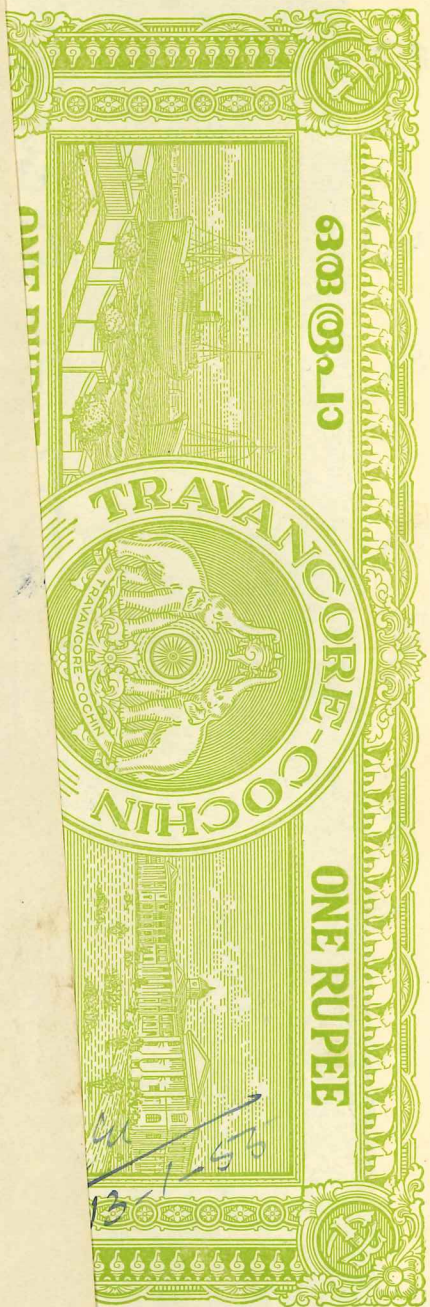


പിന്നിലുള്ള ചിത്രം പരിശോധിക്കുക. ഇതിൽ 100000 രൂപയുടെ ചിത്രം ഉണ്ട്. ഇതിൽ 80 രൂപയുടെ ചിത്രം ഉണ്ട്. ഇതിൽ 100000 രൂപയുടെ ചിത്രം ഉണ്ട്.

4







3179

Handwritten signature

12000

223-12

3/2



COURT FEE



COURT FEE



COURT FEE



COURT FEE



COURT FEE



COURT FEE

Handwritten text at the bottom of the page, likely a signature or date.



COURT FEE



COURT FEE



COURT FEE



Handwritten text in blue ink: '28100313' and '127/57'.

COURT FEE



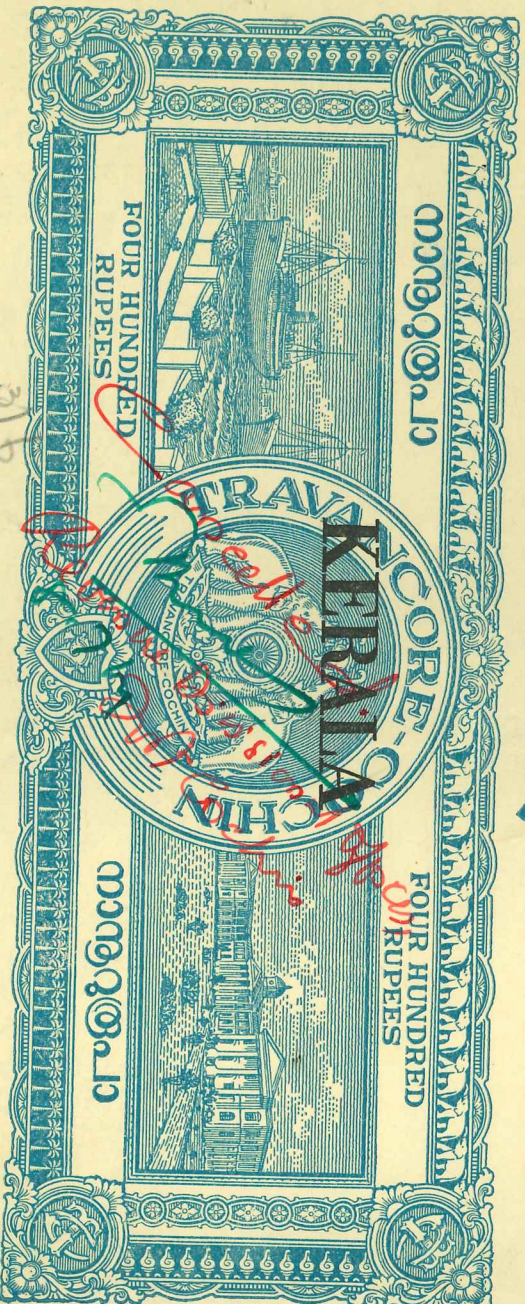
COURT FEE



2.

11. Abdul Shakoor son of D. ...

COURT FEE



98 95

BEFORE THE HON'BLE KXKX SUB COURT AT COCHIN.

Original Suit No. _____ of 1964.



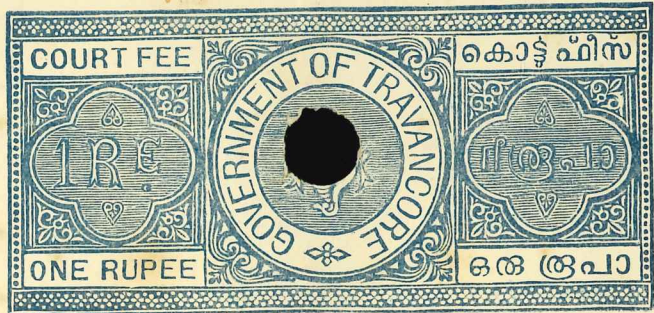
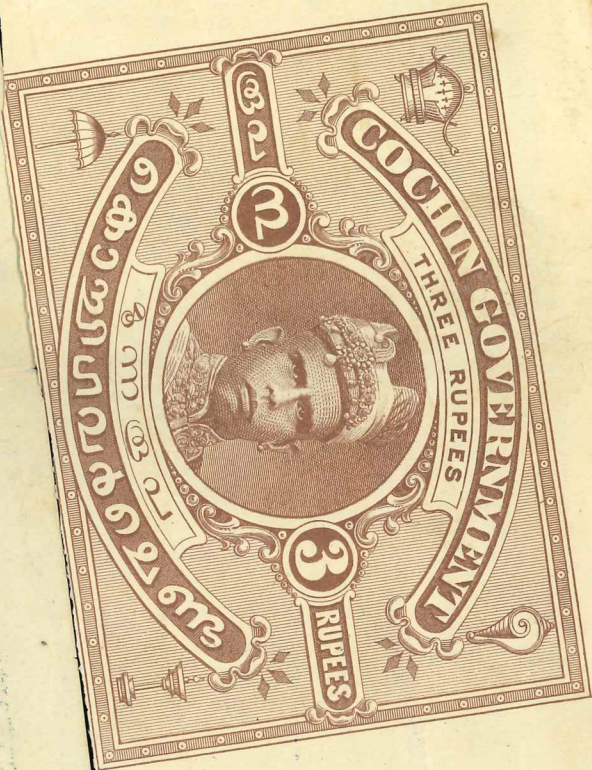
Handwritten Malayalam text: *അമ്മിനാഥ് മേലപ്പള്ളി*

Handwritten number: 4



Handwritten number: 13

Handwritten Malayalam text: *വിശ്വനാഥ് നമ്പ്യാ*



Handwritten Malayalam text: *അമ്മിനാഥ് മേലപ്പള്ളി*



Handwritten Malayalam text: *വിശ്വനാഥ് നമ്പ്യാ*

12/10 (94) Sub. Judge 28/8.
Defendant applies adjourned 30/11.



3

119

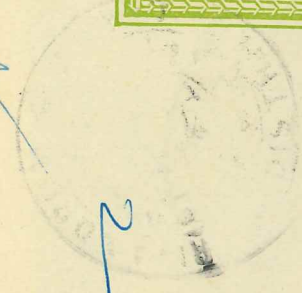
Handwritten Malayalam text: *കോടതിയിൽ ഹാജരായ സാക്ഷികൾക്കു നഷ്ടപരിഹാരം വേണ്ടി*



3



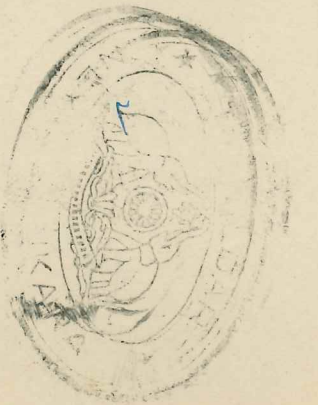
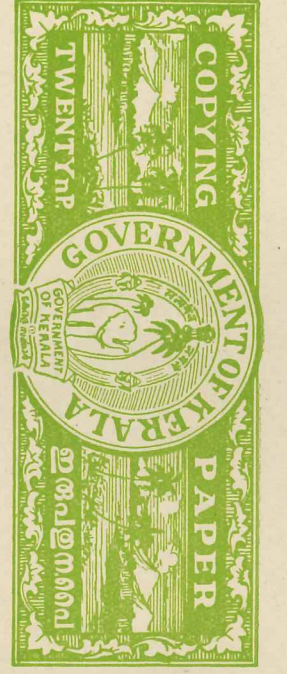
2



5

Handwritten Malayalam text: *കോടതിയിൽ ഹാജരായ സാക്ഷികൾക്കു നഷ്ടപരിഹാരം വേണ്ടി*

Handwritten Malayalam text: *കോടതിയിൽ ഹാജരായ സാക്ഷികൾക്കു നഷ്ടപരിഹാരം വേണ്ടി*



and found the accused guilty. Can
appeal from the above judgment, Ex. D

SOUTH KANARA

IN THE COURT OF THE DISTRICT JUDGE OF SOUTH KANARA.

Present: - Sri P. Sankara Menon, M.A., B.L.,
District Judge.

AS 5

TRAVANCORE-COCHIN COURT FEE

5000

215

GOVERNMENT OF MADRAS

GOVERNMENT OF MADRAS

ANNAS

TRAVANCORE-COCHIN COURT FEE

1000

3111

COPY STAMP

In the Court of the Subordinate Judge of South Kanara at
Tozhikode

5 AS

91005

GOVERNMENT OF MADRAS

GOVERNMENT OF MADRAS

ANNAS

INDIA

COURT FEE

ONE RUPEE

COPY STAMP

Dear dated 197-353

FOUR ANNAS

SIROHI STATE

यल स्टाम्प

802

1865

