

25602  
2074

2  
2  
2

## ROUMANIAN RHAPSODY

### PRINCIPALITY OF ROUMANIA.

In 1859, the Principality of **Moldavia** joined the Principality of **Muntania (Wallachia)** to form the combined State of **Moldo-Wallachia** and became known as **ROUMANIA** from 24 January 1862.

### MOLDO – WALLACHIA.

#### 1862 TO 1864. DEFINITIVE ISSUES.

26 JUNE TO 8 JULY, 1862.

**THE HANDSTRUCK ISSUES.** Made from single dies on bluish wove paper. Printed at the State-paper printing works in Jassy. Imperforate. Currency = Parale.

**DESIGN:** The combination of the eagle of Wallachia and the bulls-head of Moldavia with posthorn.



Lilac-rose



pale blue



deep blue

13 SEP. TO 25 SEP., 1864.

**THE MACHINE PRINTED ISSUES.** Printed from plates with forty varieties per sheet. Printed on white laid paper at the State-paper printing works in Jassy. Imperforate. Same design as above.



Rose-carmine



blue

25 602  
20 74

**1864, DECEMBER. PRINCE CUZA (1859-1866). DEPOSED IN 1866.**

**DEFINITIVE SERIES.** Prince Cuza looking to the right in a circle.  
Unissued series. Lithographed by Sander in Bucharest and printed imperforate.

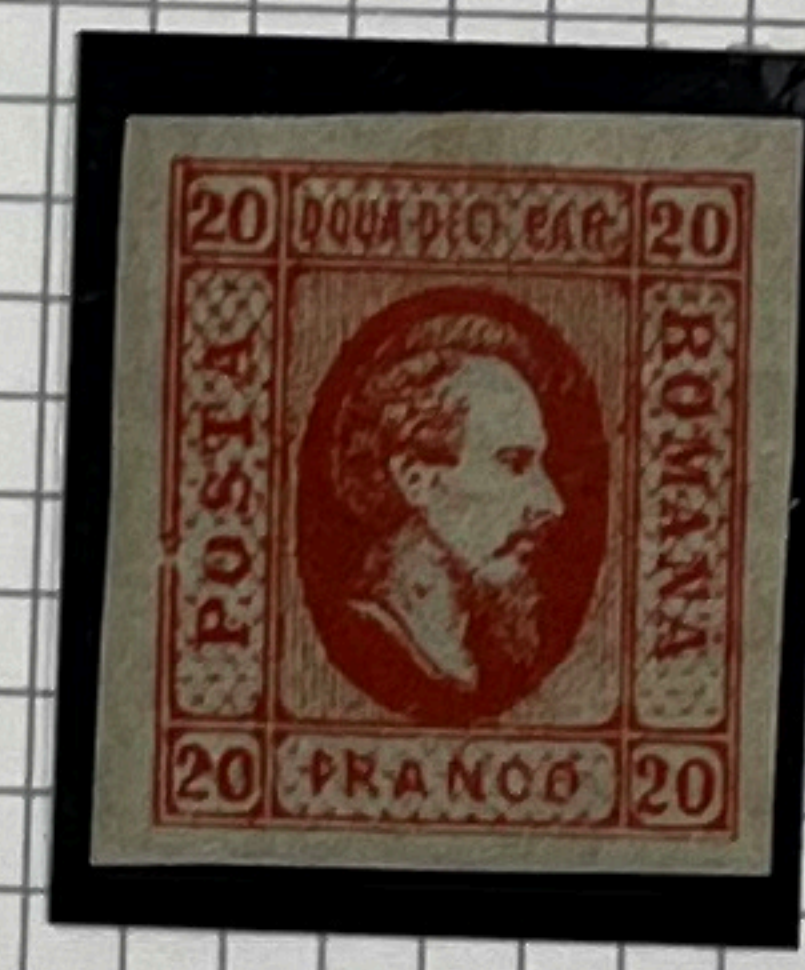


**1865, 9<sup>th</sup> JANUARY. DEFINITIVE SERIES. PRINCE CUZA IN OVAL.**

Lithographed by Sander in Bucharest on plain or striped wove paper. Imperforate.



Plain paper.



**1866, JULY to 1867. DEFINITIVE SERIES.**

**PRINCE CHARLES THE FIRST. (Proclaimed King in 1881.)**

Lithographed by Sander in Bucharest on thick or thinnish coloured papers. Prince Charles looking to the left in circle. Imperforate. Currency still Parale. These issues were for internal mail only, as external mail rates only began on 1 JULY 1869.



**1868, 20 JANUARY to 1870. DEFINITIVE SERIES.** Change of currency, from Parale to Bani. Lithographed and imperforate.



25002  
2075

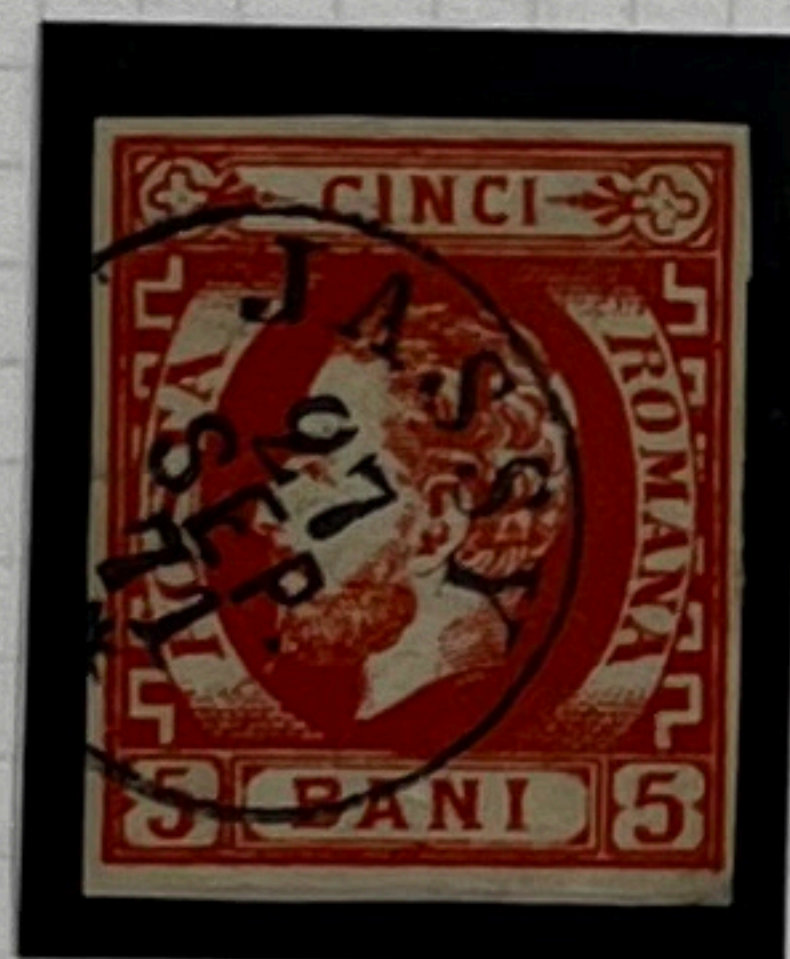
**1869, 20 MARCH to 1 APRIL. DEFINITIVE SERIES. NEW DESIGNS.**

Prince Charles with side-burns. Lithographed by Socecu, Sander and Tecu.  
Imperforate. Prince Charles ruled the country, first as Prince from 1866 and  
then from 1881, as King Charles till 1914.



**1871, 1 JANUARY. DEFINITIVE SERIES. CHANGE IN DESIGN.**

Prince Charles with full beard. Lithographed by Socecu, Sander and Tecu.  
Imperforate.



**1872, 15 FEBRUARY. DEFINITIVE SERIES. FIRST PERFORATED STAMPS.**

Lithographed as the previous issues, but PERF. 12½.



25 May  
2087

**1872, 1 OCTOBER. DEFINITIVE ISSUE. PRINTED IN PARIS.**

**NEW DESIGN.** Prince Charles 1 in circle of pearls with full beard.  
Lithographed in Paris by M. Hulot on coloured toned paper.  
Perf. 14 x 13½.



**1876, OCTOBER to 1879. DEFINITIVE ISSUE. PRINTED IN BUCHAREST.**

Similar to the Paris printing, but poorly printed, from either the original Paris Plates, or new plates. Lithographed in Bucharest, on ordinary yellowish or blueish paper. Perf. 11 to 13½.



25 MAY  
2080

25 MAY  
2083

25 MAY  
2085

## KINGDOM OF ROUMANIA

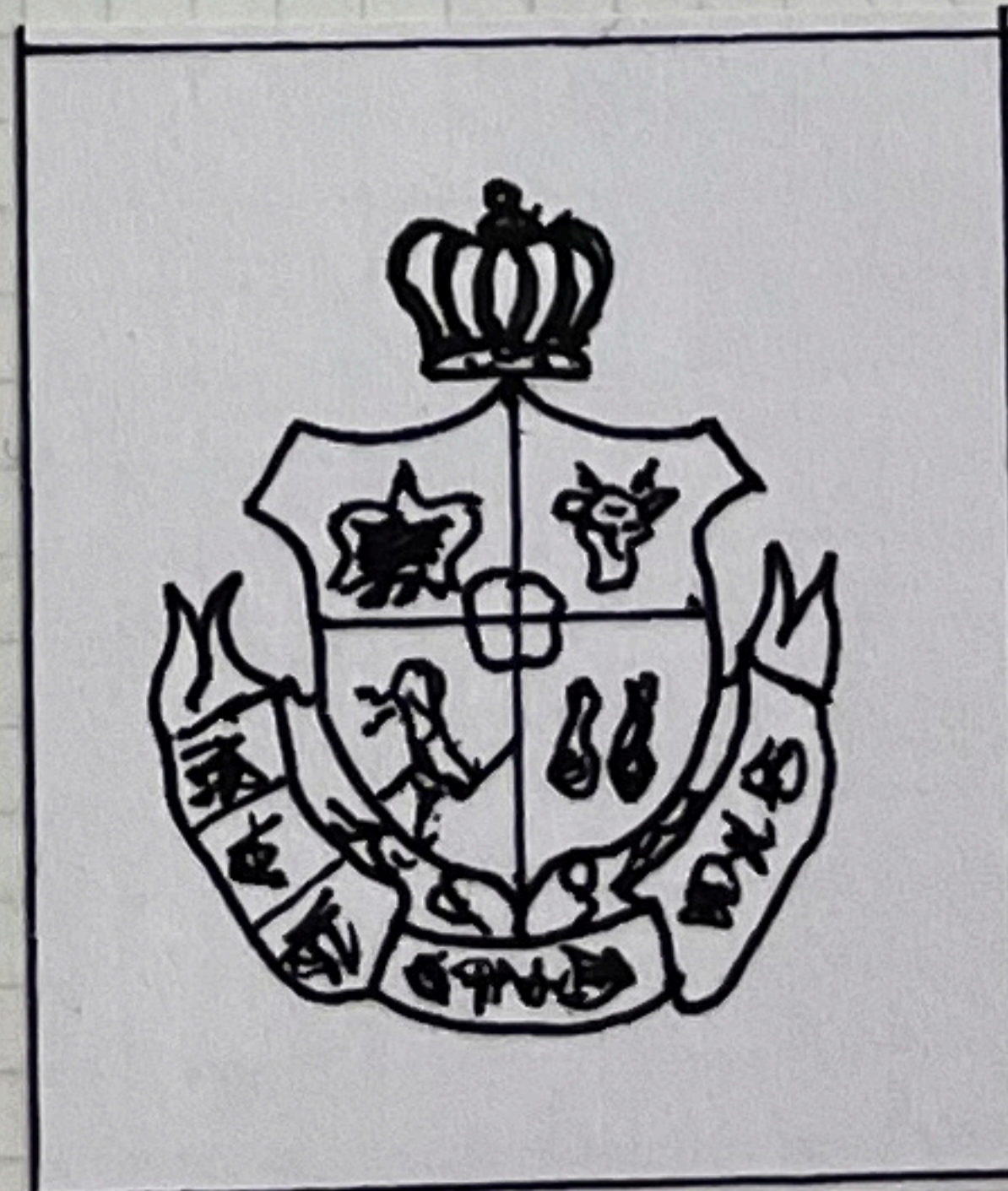
### 1885 to 1889. DEFINITIVE ISSUE. NEW DESIGN.

King Charles I in circle, with eagle above him. Lithographed at the State Printing works, Bucharest, on white or coloured papers. Perf. 11-13½. No watermark.



### 1889, 14<sup>th</sup> OCTOBER. DEFINITIVE ISSUE. SAME AS PREVIOUS DESIGN.

Lithographed on hardish, glassy paper with the colourless Royal coat of arms Impressed into the paper. Perf. 11½ -13½.



25 MAY  
2080

25 MAY  
2083

**1891, 10<sup>th</sup> MAY. JUBILEE COMMEMORATIVE ISSUE TO CELEBRATE THE 25<sup>TH</sup> ANNIVERSARY OF KING CHARLES I REIGN.**

Typographed at the Government printing works, Bucharest. Only 63,000 sets issued. Rough perfs. 11½ to 13½. Watermark : No watermark, or small "PR".

**This set of stamps was only valid for use for three days!!**



**1893 to 1898. DEFINITIVE SERIES IN LARGE FORMAT.**

Typographed Bucharest printing on various papers, which differ in thickness and texture. Watermark ; either small "PR " or large "PR ". Perf. 11½ to 13½.



25 MAY  
2080

25 MAY  
2082

**till 1896. BLOCKS OF FOUR.**

Design- The Head of King Charles the First.  
Typo-graphed, at the Government Printing Works, Bucharest.  
Watermarks – PR (large) impressed in the paper (1893-1896)  
but the 1894 printing had the small PR watermark.  
Various papers and perforations used.

Blocks of four, from 3 Bani to 15 Bani values.



25 MAY  
2080

25 MAY  
2081

1900 TO 1911. DEFINITIVE ISSUE. SAME DESIGN AS THE 1893 TO 1899 ISSUE, BUT WITH THE SHEET WATERMARK "JOHANNOT ET CIE ANNONAY". ONLY THE LEI VALUES HAVE NO WATERMARK.

Typographed on rose-tinted paper on the back, till 1908 and plain white paper after that date. Perf.  $11\frac{1}{2}$  to  $13\frac{1}{2}$ .



25 MAY  
2080

**1903, 18 APRIL TO 1 MAY. COMMEMORATIVE ISSUE TO CELEBRATE THE OPENING OF THE NEW GENERAL POST OFFICE IN BUCHAREST.**

Design : The old fashioned postal coach, drawn by four horses. Designer : Thevenin  
Typographed on pale rose coloured paper by the French Government Printing Works, Paris.  
No Watermark. Perf: 14 x 13½.



**1903, 18 APRIL TO 1 MAY. COMMEMORATIVE ISSUE TO CELEBRATE THE OPENING OF THE NEW GENERAL POST OFFICE IN BUCHAREST.**

Design : The new GPO building in Bucharest with the head of King Charles 1.  
Designer : G. Popescu. Lithographed in Paris on lightly-toned thick wove paper.  
No watermark. Perf. 13½ x 14.



25 mai  
2090

25 mai  
2079

1906, JUNE. COMMEMORATIVE ISSUE TO CELEBRATE THE 25<sup>th</sup> ANNIVERSARY OF THE KINGDOM.

Recess - printed by Bradbury, Wilkinson & Co. London. Designed by S. Pompilian. Perf. 12.



2090

25 WFLY  
2078

1906, JULY. COMMEMORATIVE ISSUE TO CELEBRATE THE 40<sup>TH</sup> ANNIVERSARY OF THE REIGN OF KING CHARLES I. STAMPS INSCRIBED " 1866 - 1906 ".

Recess - printed by Bradbury, Wilkinson & Co. London. Designed by S. Pompilian. Perf. 12.



Correct colour  
Blue & black

Error of colour  
Olive-green & black



25 may  
2090

25 may  
2077

1906, 29<sup>th</sup> TO 31<sup>st</sup> OCTOBER. COMMEMORATIVE ISSUE FOR THE BUCHAREST JUBILEE EXHIBITION.

Designed by C. Stengel. Typographed on coated paper and printed by Bradbury, Wilkinson & Co. London. Perf. 11½, but certain stamps also 13½.



25402  
2090

25404  
2076

**ROUMANIAN CHARITY STAMPS - 1906 to 1927.**  
**(TIMBRU de BINEFACERE meaning STAMPS FOR THE BENEFACTOR**

All of the following issues, had premiums charged, in addition to the normal face value of the stamp, the proceeds then going to charity.

**1906. January 1st to 14<sup>th</sup>. FIRST CHARITY ISSUE.** Queen Elizabeth (Carmen Sylva) of Roumania spinning at the Spinning Wheel. The motto at the bottom of the stamp reads : God guide our hand. Typographed . Perf.  $11\frac{1}{2}$  or compound  $11\frac{1}{2} \times 13\frac{1}{2}$ .



**1906. March 4<sup>th</sup> to 17<sup>th</sup>. SECOND CHARITY ISSUE. The Queen of Roumania weaving.**

The motto at the bottom reads: Woman weaves the future of the country.  
Designed by C. Petrescu\ . Perf.  $11\frac{1}{2}$  or  $11\frac{1}{2} \times 13\frac{1}{2}$ .



25 may  
2090

25 may  
2088

**1907, January. THE FIFTH CHARITY ISSUE.**

Recess printed by Bradbury, Wilkinson & Co., London. Perf. 11.

The design shows Queen Maria ad her children receiving a poor family, conducted by an angel.



**1927, 15<sup>th</sup> MARCH. CHARITY ISSUE TO COMMEMORATE THE 50<sup>TH</sup> ANNIVERSARY OF THE ROUMANIAN GEOGRAPHICAL SOCIETY.**

Typographed by Bradbury, Wilkinson & Co., London. Perf. 13½.



Map of Roumania



Stephan the Great



Michael the Brave



Kings Charles and Ferdinand.



Adam Clisi monument  
In Dobrukscha

25002  
2090

25003  
2089

**1906, 10<sup>th</sup> to 23<sup>rd</sup> MARCH. THE THIRD CHARITY ISSUE.**

Typographed by Bradbury, Wilkinson & Co. London. Perf. 11½ or compound of 11½ and 13½.  
The design shows the Queen of Roumania nursing a wounded soldier, and the motto inscribed on the stamp means "The wounds dressed and the tears wiped away". Numbers issued: 100,000 sets.



Printed on white paper



Printed on cream paper

**1906, 22<sup>nd</sup> JULY to 4<sup>th</sup> AUGUST. THE FOURTH CHARITY ISSUE.**

Typographed by Bradbury, Wilkinson & Co. London. Perf. 12.  
The design shows an Angel on an ornamental background and the motto inscribed means "But Glory, Honour and Peace, to all that do good."



25402  
2090

1931. 15<sup>th</sup> May. The Aviation Fund.

Created, to help the Dependants of Downed Aircraft Pilots.

Design shows an Aircraft over Mountainous Terrain.

Printed in Photogravure. Perf.13+1/2 to 14+1/2.

Designed by S.A. Constantinescu.

The stamps inscribed Timbrul Aviantiei were designed for postal use, but the stamps inscribed Fondul Aviantiei, were only for fiscal use.



1931. 15<sup>th</sup> July. The Romanian Boy Scouts Exhibition Fund.  
Photogravure. Perf.13+1/2.



Rescue Work

Prince Nicholas

King Charles II in the  
Scoutmaster's Uniform

The use of all these stamps, was obligatory, on all kinds of postal matter.

25 may  
2091

### KING CAROL II (CHARLES) OF ROMANIA.

Born 15 October 1893.  
Died 4 April 1953.

King Carol II reigned from 1930 till 1940, when he abdicated, in favour of his son, King Michael I. He went into exile in Portugal, from 1940 till his death in 1953.



1934. FROM AUGUST. 50 BANI - PORTRAIT OF KING CAROL II IN CIVILIAN CLOTHES.



1935 TO 1940. KING CAROL II IN GENERALS UNIFORM



PORTRAIT OF KING CAROL II, IN ADMIRALS UNIFORM.

25 May

25 May  
2092  
a-c

KING MICHAEL 1 OF ROMANIA. (1927 TO 2017). SON OF KING CAROL 11(CHARLES).  
REIGNED TWICE – **FIRST REIGN** - 1927 TILL 1930. **SECOND REIGN** - 1940 TILL 1947.  
KING MICHAEL WENT INTO EXILE IN 1947, WHEN THE COMMUNISTS TOOK OVER THE  
COUNTRY. HE DIED IN SWITZERLAND AT THE AGE OF 96 YEARS.



AIR MAIL COVER FROM BUCHAREST (BUCURESTI) TO JOHANNESBURG, SOUTH  
AFRICA, CANCELLED  
20<sup>TH</sup> MAY 1938, FRANKED WITH A THREE COLOUR FRANKING, OF THE KING CAROL 11  
(CHARLES) IN  
MILITARY UNIFORMS. CORRECT AIR MAIL RATE OF 76 LEI TO SOUTH AFRICA.



25 may  
2095

25 may  
2094

### POSTAGE DUES

#### POSTAL TAX STAMPS (TIMBRU DE AJUTOR).

The following stamps were for compulsory usage on inland mail to raise money for various funds. In some cases where the stamps were not applied, then the postal tax postage due stamps, were used.

1895. 15<sup>th</sup> September till 1905. Parcel Post Stamps.  
Typo-graphed. Watermark - Arms impressed in the paper.  
Perf.11+1/2 to 13+1/2.



1928. The 1927 Definitive overprinted in red.  
FACTAJ / 5 / LEI.  
5 Lei on 10 Bani light green.



#### ORDINARY POSTAGE DUE STAMPS (TAXA de PLATA).



25 May  
2015

**ROMANIAN - POSTAGE DUES.**

1922 - 24. THE TAXA DE PLATA ISSUES.

The Bani and Lei Issues.  
Black print on light-greenish paper.



25 may  
2096

**ROMANIAN - POSTAGE DUES.**

1922 - 24. THE TAXA DE PLATA ISSUES.

The Bani and Lei Issues.  
Blue print on greenish paper.



9

### ROUMANIAN OCCUPATION OF HUNGARY – 1919.

Through the Treaty of Versailles, at the end of World War 1, Roumania inherited territories in Eastern Hungary. Among these were the provinces of Transylvania and Debreczin.

#### TRANSYLVANIA.

The Roumanian Postal Authorities overprinted the current Hungarian stamps with an overprint **REGATUL ROMANIEI** in a double circle, which contained the Monogram of King Ferdinand and the letters PTT.

Two overprints were in use, the so-called **Klausenburger** overprint with the words **Bani** and **Lei** in standard print and the **Grosswardeiner** overprint in cursive style. These overprinted stamps were in use in Transylvania for 2½ years only.

#### Klausenburg overprints.



25  
210  
25 May  
2103

Klausenburg overprints.



25 magy  
2104

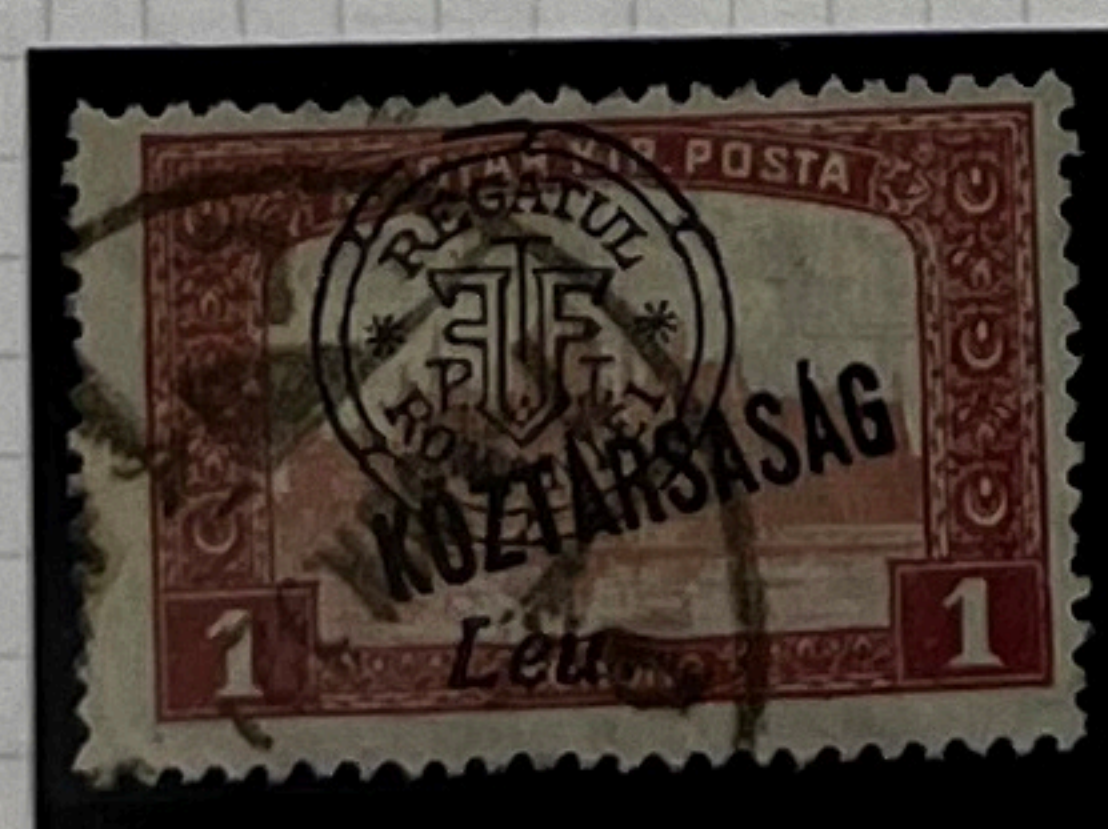
Grosswardein overprints.



Quadruple overprint.



REPUBLIC - KÖZTÁRSASÁG.



Overprint shifted.

AUSTRIAN WW ONE - FELDPPOST STAMPS USED IN ROMANIA.

25 may

25 may  
2105

Grosswardein overprints.



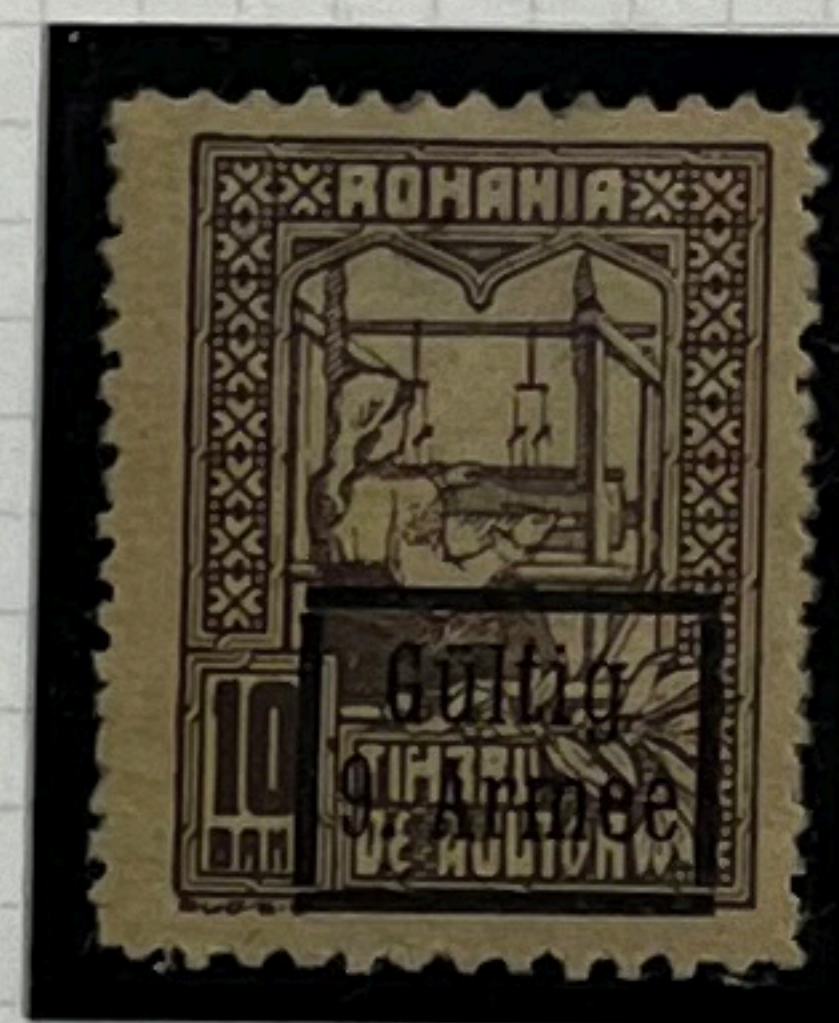
**AUSTRIAN WW ONE - FELDPPOST STAMPS USED IN ROMANIA.**

25 May

in 1917 during the occupation of Romania by the Central Powers, Austrian-Hungary issued

**MILITARY POST ISSUES FOR THE 9<sup>TH</sup> ARMY.**

**1918, 10 March.** Germania and various Rumanian Fiscal stamps, overprinted as **GULTIG 9. ARMEE** ( VALID FOR THE USE OF THE 9<sup>TH</sup> ARMY ONLY ) in a rectangular frame , printed in either red or black. Printed in Bucharest.



25 May  
2101

### AUSTRIAN WW ONE - FELDPOST STAMPS USED IN ROMANIA.

In 1917, during the occupation of Romania by the Central Powers, Austria-Hungary issued occupation postage stamps. The Austrian stamps used the K.U.K FELDPOST stamps, surcharged into Romanian currency. ( Bani and Lei ).

The stamp design, featuring Emperor Karl of Austria (He succeeded his Uncle Emperor Franz Joseph who died in 1916) was used in many areas during the war 1914 – 1918, with the bottom intentionally left blank, so that local denominations could be inserted. Therefore, the Bani and Lei values, were inserted in black ink.

The following year 1918, new stamps were issued with their values in red ink.



25 may  
2100

### AUSTRIAN WW ONE - FELDPPOST STAMPS USED IN ROMANIA.

In 1917, during the occupation of Romania by the Central Powers, Austria-Hungary issued occupation postage stamps. The Austrian stamps used the K.U.K FELDPPOST stamps, surcharged into Romanian currency. ( Bani and Lei ).  
The stamp design, featuring Emperor Karl of Austria (He succeeded his Uncle Emperor Franz Joseph who died in 1916) was used in many areas during the war 1914 – 1918, with the bottom intentionally left blank, so that local denominations could be inserted. Therefore, the Bani and Lei values, were inserted in black ink.

The following year 1918, new stamps were issued with their values in red ink.



25 may  
2097

25 may  
2099

TAL TAX STAMPS.

SOLDIERS FAMILY FUND – (TIMBRU de AJUTOR)

These stamps were produced as a War Tax. Every letter sent, had to have a 5 Bani Tax stamp, added to the normal franking.  
The 10 Bani duty, was to be added to Telegrams, as an additional Tax franking.

1916 till 1918. The Charity Issue. Printed in Typo-graph, on white or grey paper.  
Design shows the Queen weaving.



1918. The 1916 issues overprinted 1918, to be used as Definitive issues.



Timbru de Ajutor overprinted on Taxa de Plata Issues.



1921. Social Assistance Issues.  
Typo-graphed. Perf. 11+1/2 to 14.  
Design shows a nurse, looking after children.



25 MGV  
2098

**GERMAN MILITARY ADMINISTRATION IN RUMANIA.**  
**1917, 1 JUNE till 1918.**

Various issues of the Germania war stamps, as well as various current Rumanian postage due issues and War tax -postage due stamp issues, were overprinted with the letters "MViR", an abbreviation for **Militarverwaltung in Rumanian**. These overprints were made in different forms and the currency 1Leu = 100 Bani.



cancel-Bukarest



cancel-Bukarest

