

CUBA: VARIETIES AND ERRORS 1899-1962

PURPOSE OF THE EXHIBIT:

This traditional exhibit presents a comprehensive study of over 90% of the Cuban stamps containing a fixed variety or error from 1899 to 1962. It shows mostly varieties that occur in the same position in each sheet printed. I have been able to locate most of the positions where these varieties occur. There are also errors that occur at random, such as misperforations and paper creases in which fixed positions do not exist.

ORGANIZATION OF THE EXHIBIT:

This exhibit is organized into three sections. **Section 1** shows varieties and errors of the United States Overprinted Issues for Cuba, 1899. **Section 2** shows varieties and errors of the Republic of Cuba, 1902 to 1958. **Section 3** shows varieties and errors of Revolutionary Cuba, 1959 to 1962. (Stamps issued after 1962 are subject to embargo). The exhibit is in chronological order, with a few exceptions.

RARITIES:

Many of the stamps shown in this exhibit are very rare and/or scarce. In some cases there are only one or two samples recorded. In other cases less than 6 or 16 stamps were printed and/or recorded and in other cases only 100 stamps were printed. Exceptional items are framed in **RED** and significant items are framed in **BLUE**.

HIGHLIGHTS:

Section 1- United States Overprinted Issues of Cuba 1899.

Highlights are listed in the next page.

Section 2- Republic of Cuba, 1902 to 1958.

Highlights: Cuban Patriots Issue of 1910, inverted centers. Two cents with albino center, only 2 recorded.

First International American Conference issue, only 2 recorded, a single and a vertical pair.

1936 Issues of Free Zone of Matanzas and Máximo Gómez color proofs with fixed varieties similar to the regular issued stamps. Only one of each can exist.

1944 issue of the Anniversary of the Discovery of the Americas. Imperforated horizontally, only 20 stamps recorded.

1950 issue of the 75th Anniversary of the U.P.U. Less than 25 stamps found. Unique pair with sheet number.

1952 Executed Students issue, vertical strip of 3 imperforated horizontally. Only 25 recorded

1953 3 cent inverted surcharge of the 2 cent Tobacco issue of 1948. Only 5 or 6 recorded.

1951 SS for the Centennial of the Havana Medical Journal. Inverted overprint. Only one recorded. Same SS with the oval overprint broken off. Only one recorded.

1951 Antonio Guiteras SS, inscription inverted. Only one recorded.

1956 Virgin of Charity SS with yellow color missing. Only 16 recorded.

Section 3 – Revolutionary Cuba: 1959-1962

Highlights: 1962 block of 4 inverted 8 cent surcharge. Only 100 known.

Inverted surcharge (February 3rd, 1960) on the Semipostal Pro-Agrarian Reform of 1959. Only 3 known.

1962 SS of the International Philatelic Exhibition in Prague. Red color missing. Six to 8 recorded.

UNITED STATES OVERPRINTED ISSUES FOR CUBA ERRORS AND VARIETIES

1899

Section 1

Section 1 shows the viewer the errors and varieties that occurred during the printing of the US overprints for stamps that were used in Cuba on US stamps during the US occupation. A variety is defined as an error in the overprinting that occurs constantly in the same position in each sheet. An error is defined as an overprinting fault that occurs as a result of a broken plate, dirt, weak inking, etc

Organization of Section 1

Section 1 is organized in three parts.

- Varieties and errors of the regular use (ordinaries) stamps (1, 2-1/2, 2, 3, 5 and 10 cents). Highlights are: 2c on 2c inverted overprint, 2c strip of 5 stamps with overprint transition error, 2 U.S. stationary covers with very displaced overprints and 5c "CUPA" variety, type II variety of the 10c overprint, 10c "CUBA" in bottom overprint.
- Special Delivery stamps. Highlights are: two blocks of 6, with the "missing period after Cuba" constant variety in positions 22 and 47, "Dots in the Arch over Messenger's Head," Paris Exhibit, Plate 882.
- Varieties and errors of the postage due stamps (1, 2, 5 and 10 cents). Highlights are: 2c on 2c inverted overprint.

Section 1 – United States Overprinted Issues for Cuba

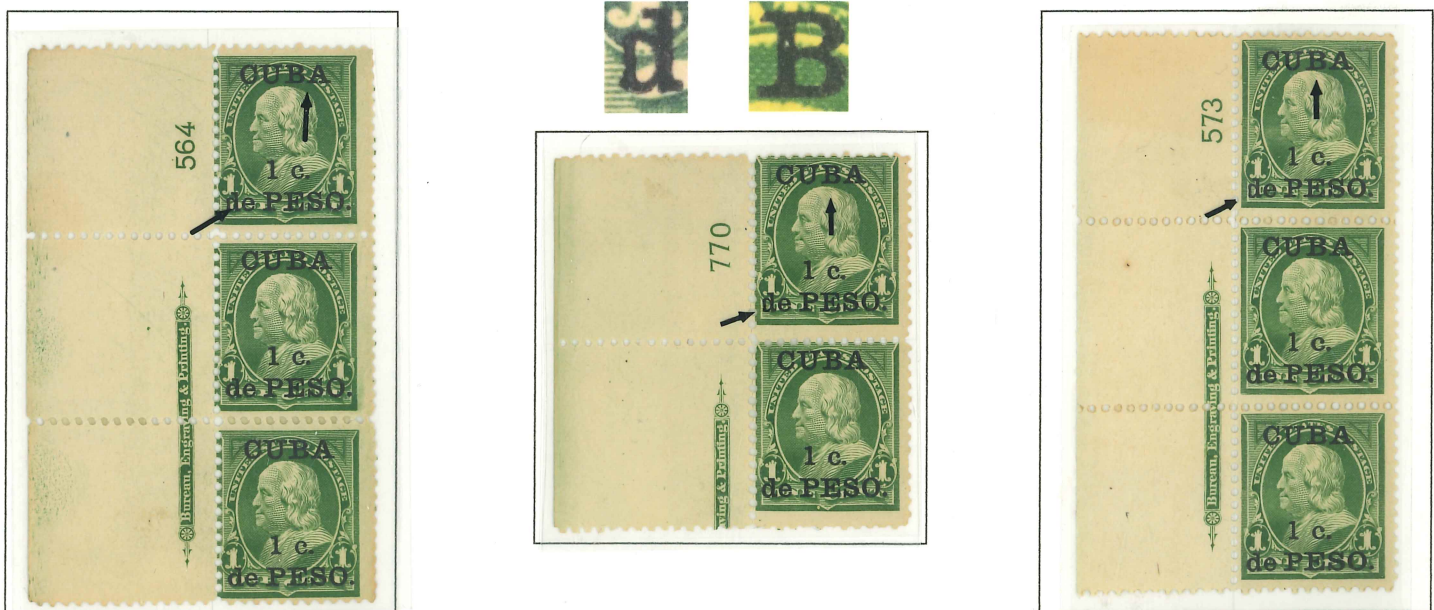
January 1899

One Cent over One Cent Ordinary

Below and the following page there are two interesting varieties that occur in different positions in the plate. One is the "deformed d" which occurs in **position 31** next to the left plate number (plates 564, 566, 567, 573, 574, 770, 772, 773) and in **position 86, bottom plate** (plates 574, 768, 772, 773). The "deformed d" is absent in the left plate numbers 572, 573, 574, 575, 766, 769, some 770, some 772, some 773, 794, 797, 811 and 813.

In addition, there is a variety "top serif of the B in Cuba cut at an angle" in positions **31, 36, 81 and 86**, with or without "deformed d." Notice that "B" cut in an angle is shared by the "deformed d" in two positions, 31 and 86.

Also in position 70 there is a fixed variety "broken right leg of A of CUBA." All of these varieties also appear in the postage due overprints. (One Cent over One Cent.)



PLATES 564, 770, 573. DEFORMED "D" AND "B" CUT AT AN ANGLE. POSITION 31. TOP STAMP.

Two and a Half Cent over Two Cents Ordinary

The first shipment of postal supplies included two million 2 cents stamps surcharged "2-1/2c. de PESO" intended for the payment of the "local" drop rate. Unfortunately no one noticed that the rate had been dropped to 2 cents by the Spanish, so the P.G. Rathbone ordered that the stamps were to be sold at the 2 cent value (the only time in history that U.S.A. stamps were sold for less than face value). New stamps of 2 cents were printed but they were not placed on sale until all the 2-1/2 cent stamps had been sold.



SHORT UPPER SERIF OF "B" OF "CUBA"



LARGE BREAK IN FRACTION BAR



SMALL BREAK IN FRACTION BAR



LEFT UPPER SERIF OF "U" OF "CUBA" CUT IN AN ANGLE



SHORT UPPER LEFT SERIF OF "P"
SHORT LOWER LEFT SERIF OF "P"
POSITION 31



SHORT UPPER SERIF OF "B" OF "CUBA"



SHORT UPPER SERIF OF "B"



Cover with Variety



*Soldiers Package
Letter
Scullin
1st Supt 8th Infantry
Comdy Camp L*

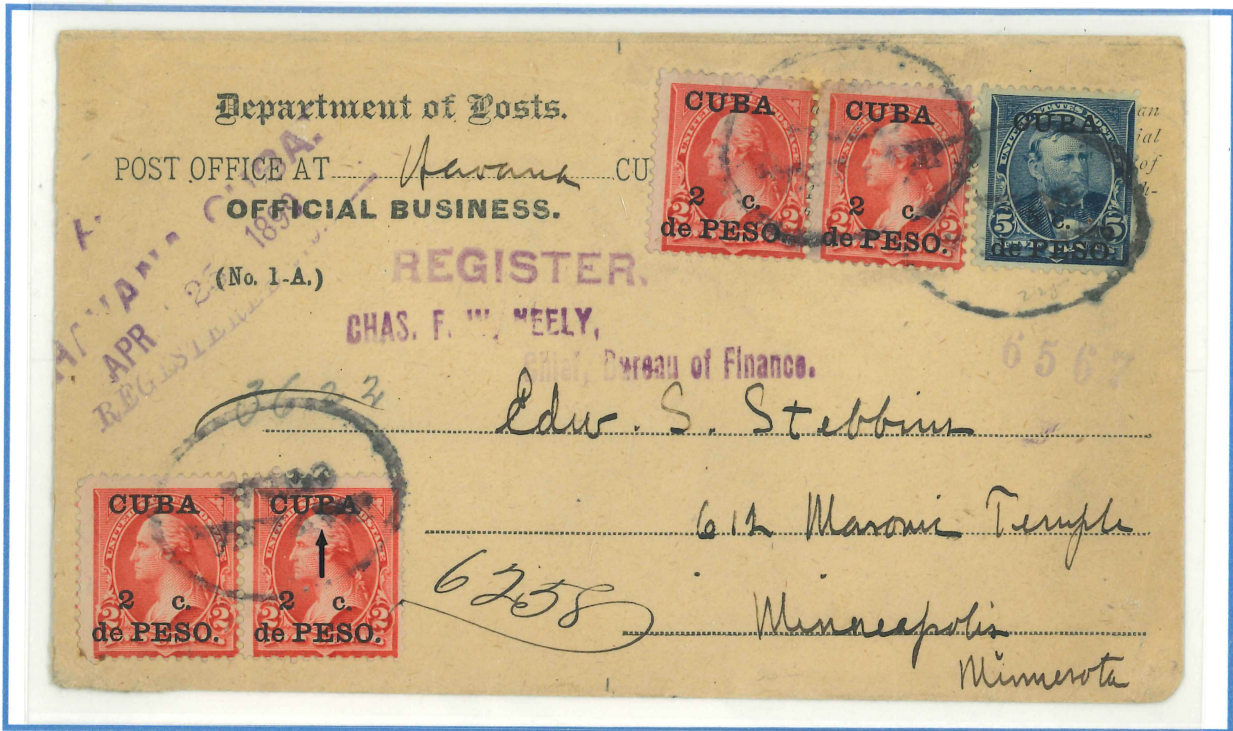


*Mrs. Louis Handwerker
No 1603 South 3rd St.
Philadelphia
Pa*

U.S. of America

UPPER LEFT SERIF OF "U" CUT AT AN ANGLE ON SECOND STAMP
SOLDIER'S PACKAGE FROM COMDY CAMP L TO PHILADELPHIA, PA
Military Station No. 10, Havana ("General Utility" Postmark type 1)

Covers with Varieties



"CUPA" IN SECOND STAMP LOWER LEFT - VERY SCARCE US "OVAL" CANCELLER: "HAVANA-CUBA"
Registered Mail from Havana, Cuba (April 25, 1899) to Minneapolis, MN. (received May 1, 1899)



SHORT TOP LEFT SERIF ON "B" OF "CUBA" ON THREE CENTS STAMP
Mailed from Santiago de Cuba (date unknown) to Richmond, VA (received June 23rd, 1899).
Military Station No. 1 ("General Utility" postmark type 1)

Three Cents over Three Cents Ordinary

POS 5 POS 6 POS 7



RIGHT



LEFT

"3" SHIFTED TO THE LEFT OF "P" POSITION 5
 "3" ON TOP OF "P" POSITIONS 6 AND 7
 NOTCH IN LOWER SERIF OF "E" POSITION 6
 DISTANCE BETWEEN "3" AND "P" IS 1-1/2 MM
 IN ALL THREE STAMPS

POS 5 POS 6



BROKEN "A" OF "CUBA" POS 5
 DEFORMED "3" POSITION 6
 DISTANCE BETWEEN "3" AND "P" IS
 1- 1/2 MM IN BOTH STAMPS

POS 95 POS 96 POS 97



TOP



LEFT



"3" SHIFTED TO THE LEFT OF "P" POSITION 95
 "3" ON TOP OF "P" POSITIONS 96 AND 97
 SHORT LOWER SERIF OF "P" POSITION 97
 DEFORMED "D" LOWER SERIF OF "D" POS 97
 DISTANCE BETWEEN "3" AND "P" IN POS 95 IS 2 MM
 DISTANCE BETWEEN "3" AND "P" IN POS 96/97 IS 1-1/2 MM
 OPEN "c" OF CENTS POSITION 97

POS 5 POS 6 POS 7



TOP



LEFT



RIGHT

POS 15 POS 16 POS 17

"3" SHIFTED TO THE RIGHT OF "P" IN POS 5 AND 15
 "3" ON TOP OF "P" IN POSITIONS 6 AND 16
 "3" TO LEFT OF "P" IN POSITIONS 7 AND 17
 "PERIOD" BETWEEN "B" AND "A" OF "CUBA" POS 16
 BROKEN TOP SERIF OF "E" OF "PESO" POSITION 7
 NOTCH IN LOWER SERIF OF "E" OF "PESO" POS 6
 CLOSED "c" OF CENTS POSITION 17
 DISTANCE BETWEEN "3" AND "P" IS 2 MM POS 5/15
 DISTANCE BETWEEN "3" AND "P" IS 1-1/2 MM
 POSITIONS 6, 7, 16, 17



Three Cents over Three Cents Ordinary



"3" TO THE RIGHT OF "P"

"3" TO THE RIGHT OF "P"

"3" TO THE LEFT OF "P"

"3" TO THE LEFT OF "P"

SHORT TOP SERIFS OF "B" OF "CUBA"

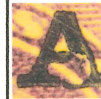


"3" TO THE LEFT OF "P"

"3" TO THE LEFT OF "P"

"3" ON TOP OF "P"

SHORT TOP SERIFS OF "B" OF "CUBA"



"3" TO THE LEFT OF "P"
BROKEN "S" OF "PESO"

"3" TO THE LEFT OF "P"
BROKEN "A" OF "CUBA"

"3" TO THE LEFT OF "P"
BROKEN "O" OF "PESO"



"3" TO THE RIGHT OF "P"

THIN "O" OF "PESO" ON BOTTOM

"3" ON TOP OF "P"

ANGLE BETWEEN "3" AND "c"

"3" TO THE LEFT OF "P"

SMASHED "D" OF "D"
POSITIONS 31 OR 81 ?

Five Cents over Five Cents Ordinary

The 5 cents value offers plenty of varieties that include the well known "CUPA" instead of "CUBA." In this section you will find the "CUPA" variety in pairs, used, unused and in covers.

"CUPA" INSTEAD OF "CUBA"

This variety occurs because there was a flaw in the letter "B" that did not allow the bottom of the letter "B" to be fully printed. This is a constant variety that occurs in position 50 of the sheet and always has a straight edge on the right hand side. Also there is a notch on top of "d." In many instances you can see a blue line in the bottom of the stamps that indicates the separation between the upper 50 and lower 50 stamps in the pane.

The stamp on the left of "CUPA", that is, position 49 also has a constant variety which is missing part of the letter "E" of "PESO" in the upper left part of the letter and a notch in top of "P." This can be seen in both pairs shown below. In the used pair you will notice that the right margin of the pair is perforated. This is a reperforated stamp, if you look carefully you can see the differences between the right margin reperforation and the other three margins. There are many forgeries in which the forgers print a letter "P."



BROKEN "E" (49) "CUBA" (50)
NOTCH ON "P" (49) NOTCH ON "D"(50)
REPERFORATED RIGHT MARGIN



BROKEN "E"(49) "CUBA"(50)
NOTCH ON "P" (49) NOTCH ON "D"(50)



COVER MAILED FROM HABANA TO ADDISON, MICHIGAN ON MAY 10TH, 1904 CONTAINING A "CUPA" VARIETY, POSITION 50 AND NOTCH ON "D" POSITION 50

Below are examples of other varieties (defects) of the overprint in the five cents stamp. The positions of these varieties are unknown and is not known which ones are constant.



DIFFERENT EXAMPLES OF TOP SERIF OF "B" BROKEN IN THE LEFT



BROKEN "O"

BROKEN "P" AT BOTTOM

BROKEN "P" AT TOP SERIF

NOTCH AT BOTTOM OF "E"



BROKEN "U" AT LEFT

BROKEN "U" AT RIGHT

BROKEN "S" AT TOP

TOP SERIF OF "B" CUT AT AN ANGLE
LARGE PERIOD AFTER "O"

As mentioned before there were 4 mini-plates of 25 (5X5) used to print the whole sheet of 100 stamps. Shown below are top and bottom plate strips of 3's that show where the break of the mini-plates occurs. Notice the placement of the overprints to the left and right of where the break occurs.



UPPER LEFT
POSITION 5

UPPER RIGHT
POSITION 6, 7



LOWER LEFT
POSITION 95

LOWER RIGHT
POSITION 96, 97

One Cent Overprint over One Cent Postage Due

On November 15th, 1899 the United States placed in use postage due stamps for Cuba using the U.S. Postage Due stamps of 1895. The overprinting plates were the same as had been used for the regular postage stamps and possess the same plate errors. Because the number of stamps issued were much smaller in quantity than the regular issued stamps fewer examples of varieties can be found and are harder to find (for example 1 cent regular issue 4 million vs. 1 cent postage due 100,000), etc. There are conflicting dates as to when the stamps were placed in circulation.

ONE CENT POSTAGE DUE SPECIMEN



This one cent postage due stamp is one of the 100 specimens issued and distributed to the Postmaster General for the use of its office. It is hand stamped "SPECIMEN" by the Office of the Third Assistant Postmaster General before distribution. **THIS IS A UNIQUE COPY OF THIS STAMP SINCE IT HAS THE VARIETY "BROKEN RIGHT LEG" OF "A" OF "CUBA" IN POSITION 70 OF THE SHEET OF 100.**



UNDERINKED "B" OF "CUBA"
SMALL PERIOD AFTER "O"



BROKEN "S" AND "O"
OF "PESO"



BROKEN "B" OF "CUBA"



COVER FROM HALIFAX, CANADA TO HAVANA, CUBA, JUNE 15, 1900. POSTAGE DUES 6 CENTS
SHOWS THE ONE CENT POSTAGE DUE STAMP WITH VARIETY "BROKEN RIGHT LEG" OF "CUBA" IN POSITION 70

Five Cents Overprint over 5 Cents Postage Due

“CUPA” instead of “CUBA” constant variety also shows up in the five cents postage due stamp in position 50. Also in position 49 the broken “E” of “PESO” in the upper serif and a notch on top of the “P” of “PESO.”



POSITION 49 POSITION 50
BROKEN “E” “CUPA”
NOTCH ON “P” NOTCH ON “D”



POSITION 25 POSITION 26 POSITION 27
BROKEN “B”



BROKEN “E” AND “P”



BROKEN “B”



BROKEN “E”
BROKEN “P”



BROKEN “O”



NOTCH IN BOTTOM OF “E”
POSITIONS 21, 26, 71, 76



SHORT SERIF OF “B”



NOTCH ON TOP OF “E”



NOTCH INSIDE “E”



DEFORMED “D” POS 31 OR 86



BROKEN “O”



BROKEN “E” AND “S”

Ten Cents Overprint over Ten Cents Postage Due



BROKEN "A" RIGHT LEG NOTCH ON BOTTOM OF "A" LEFT LEG POINTED UPPER SERIF OF "B" BROKEN "P" LOWER SERIFF



NOTCH IN UPPER RIGHT SERIF OF "U"

NOTCH ON LEFT SIDE OF "P"

BROKEN "U" "B" "A"



COVER FROM NORFOLK, VA. TO HAVANA, CUBA, JANUARY 15, 1901. LOCK BOX BROKEN "E" AT THE BOTTOM

Two Cents over Two Cents Ordinary



INVERTED SURCHARGE
RARE - P.F. CERTIFICATE



CUBA IN BOTTOM
RARE



STRIP OF FIVE STAMPS WITH OVERPRINT TRANSITION ERROR - BROKEN SERIF OF "B" IN 5TH STAMP - ONLY 90 KNOWN



"CUPA" IN 1ST STAMP



BROKEN "A" POS 70



BROKEN "B"



UPPER LEFT SERIF OF "U" CUT
AT AN ANGLE



BROKEN UPPER
SERIF OF "B"



BROKEN "E OF "PESO"



DEFORMED PERIOD
AFTER "c"



BROKEN UPPER RIGHT
SERIF OF "U"



BROKEN UPPER SERIF
OF "B" - UPPER LEFT SERIF
OF "U" CUT AT AN ANGLE



UPPER LEFT SERIF OF "P" SHORT (3RD UPPER) - DEFORMED "O" OF "PESO" (2ND LOWER)



PLATE 769: NO DEFECTS

DEFORMED "D" OF "de" AND TOP SERIF OF THE "B" OF "CUBA" IS CUT AT AN ANGLE. (POSITION 86). LOWER LEFT STAMP.
BROKEN RIGHT LEG OF "A" OF "CUBA" (POS 70), 2ND ROW, 5TH STAMP



PLATES 572, 573, 574, 575, 766: "B" CUT AT AN ANGLE. NO DEFORMED "d"



BROKEN "E" POS 62

BROKEN "E" POS 62

"1" SMALL SERIF POS 24,29,74,79

BROKEN "O" NO PERIOD

BROKEN "O" PARTIAL PERIOD



POINTED "B" SERIF



MISSING "A" OF "CUBA"



BROKEN "B" AT RIGHT

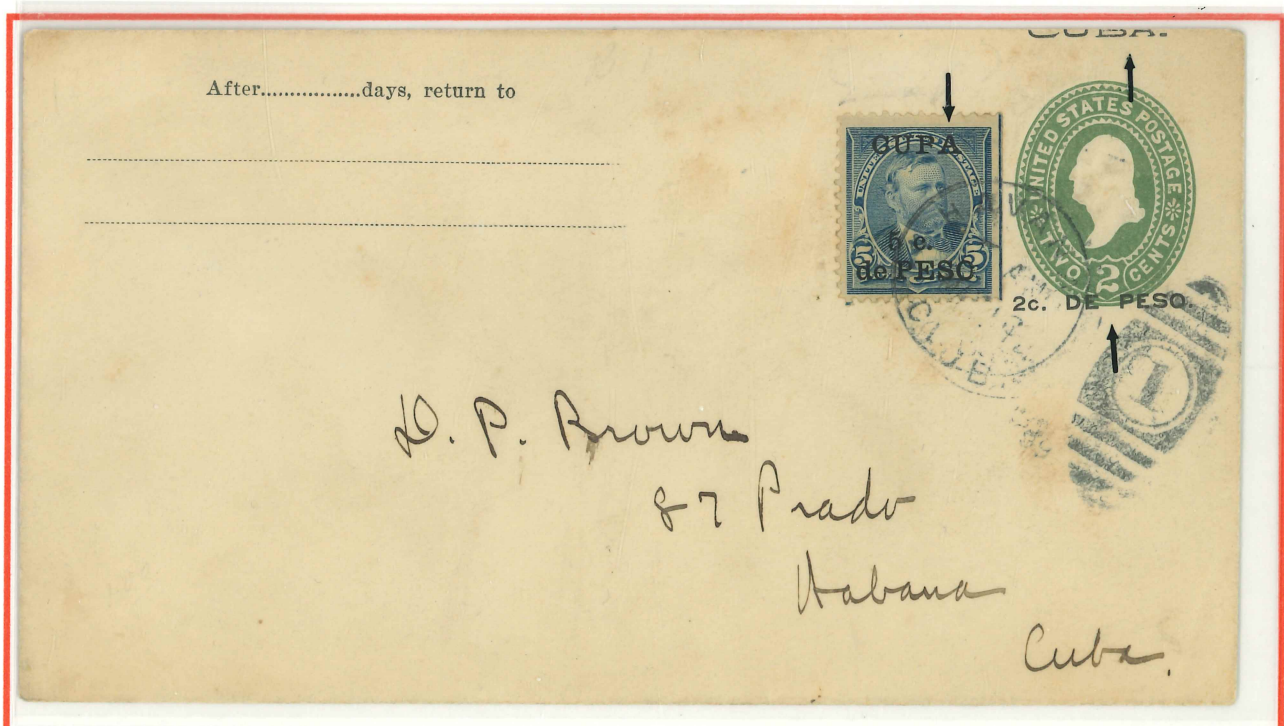
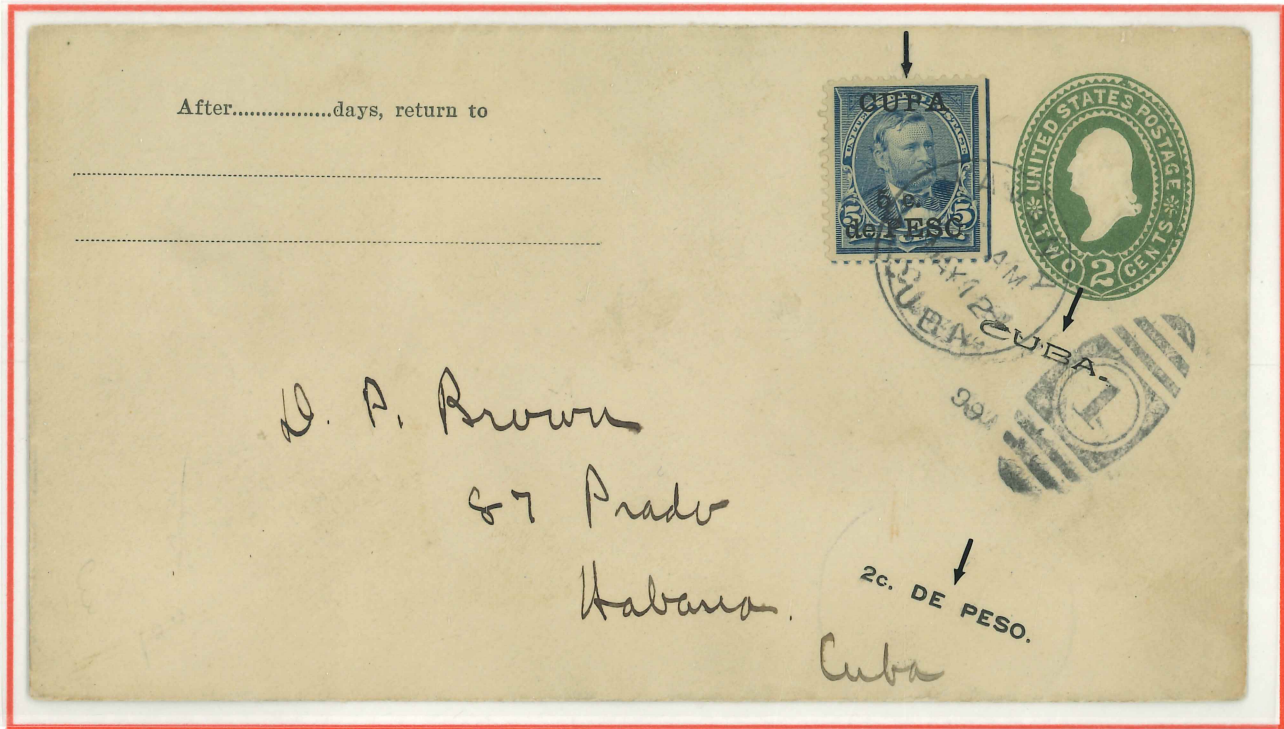


OVERPRINT SLANTED UPWARDS

Two Cents over Two Cents overprinted U.S. Stationery

United States envelopes of the 1887 issue, manufactured by the Hartford Manufacturing Co., Hartford, Connecticut, were shipped to Cuba for the use of U.S. troops and general use throughout the island. They were overprinted by Ruiz y Hermano, Havana. Laid paper watermarked "U.S.P.O.D "94" in a monogram.

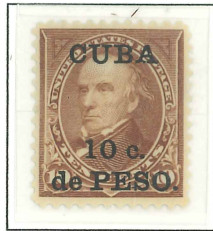
Shown below are two examples of these envelopes with very displaced overprints and the five cents "CUPA" variety stamps. **THESE ENVELOPES, ESPECIALLY WITH THE FIVE CENTS "CUPA" VARIETY ARE CONSIDERED VERY RARE. ONLY A FEW COPIES ARE KNOWN TO EXIST. EX TOWS.**



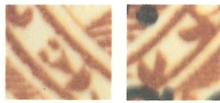
Ten Cents over Ten Cents Ordinary

Due to the lower number of stamps printed and the smaller use of these stamps I have not been able to find many varieties in the printing of the surcharges, or perhaps there are not many varieties of this value.

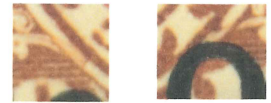
Below you will find a 10 cent regular mail **Special Overprint** stamp that was used for an exhibit at the Paris Exposition of 1900. In all the values, the available plates were used except the 10 cent regular (type I) which was not longer available. The plate that was used for the 10 cent regular was the re-engraved type II in which the tips of the ornaments break the curved lines below the "E" of the "TEN" and the "T" of "CENTS." **Only 100 stamps were printed, a few were kept after the exposition and rest destroyed.** Also shown are two rare displacements: "CUBA" in bottom and an extreme displacement up with "CUBA" almost disappearing. Other varieties are also shown.



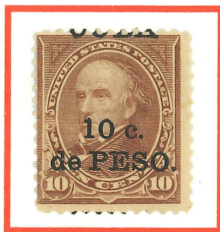
TYPE I



TYPE II
VERY FEW KNOWN



VF - FRESH O.G.



PARTIAL "CUBA"
IN TOP
"10c" IN MIDDLE



"CUBA" IN BOTTOM



PARTIAL "CUBA" IN TOP
AND BOTTOM
"10c" IN MIDDLE



BROKEN UPPER
SERIF OF "P"
POSITION 95

BROKEN "B" AND "A"
OF "CUBA"
POSITION 97



POINTED UPPER SERIF OF "P"



SHORT UPPER SERIF OF "B"



Ten Cents over Ten Cents Special Delivery

United States stamps for Special Delivery of the issue of 1895 depicting a postal messenger on foot, surcharged "CUBA" and the new value in "c" de "PESO" in red ink by the U.S.A. Bureau of Engraving and Printing. The first shipment was made to Cuba on April 10th, 1899, received on April 29th, 1899.

Shown below is a block of six stamps, type I, plate 492, showing the "no period after CUBA" variety, position 22. This is the top pane, showing in the left margin a portion of the arrow and the blue line separating the top and bottom panes.

Also shown below is a plate block of six stamps, type I, plate 492, showing the "no period after CUBA" pos 47.

BEP 492				
1	2	3	4	5
6	MINI-PLATE (5x5) #1			10
11	1ST PTG - TOP			15
16	2ND PTG - BOTTOM			20
21	Pos. 22 No Period	23	24	25
26	27	28	29	30
31	MINI-PLATE (5x5) # 2			35
36	1ST PTG - BOTTOM			40
41	2ND PTG - TOP			45
46	Pos. 47 No Period	48	49	50
BEP 492				

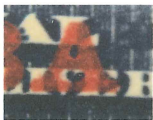


NO PERIOD AFTER "CUBA", POSITION 22, PLATE 492, UPPER PANE



NO PERIOD AFTER CUBA, POSITION 47, PLATE 492, LOWER PANE

MNH
VERY
FRESH!

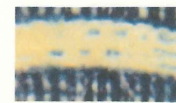


NO PERIOD



PERIOD

Shown below is the Special Printing for the Paris Exhibit using plate 882 "Dots in the Arch over Messenger's Head." According to "NAPP's Numbers only 50 stamps were printed making it a very rare stamp.



DOTS



NO DOTS

FIVE DOTS IN THE ARCH, TYPE II, PLATE 882

Two Cents Overprint over Two cents Postage Due



INVERTED OVERPRINT
TOP SHORT SERIF OF "B"

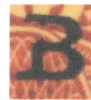


INVERTED OVERPRINT
TOP SHORT SERIF OF "B"
DEFECTIVE "P" OF "PESO"
P.F. Certificate



INVERTED OVERPRINT

THESE STAMPS ARE VERY RARE. THE FIRST TWO STAMPS WITH THE TOP SHORT SERIF OF "B" ARE MORE RARE



DIFFERENT EXAMPLES OF BROKEN "B" OF "CUBA"



BROKEN "O" OF "PESO" ON RIGHT STAMP
OVERPRINT SHIFTED DOWN



DENT ON RIGHT SERIF OF "U"