

AIR MAILS

640
640



FIF

17th DEC 1931 DUBLIN: via Christmas Flight to Australia. to Alor Star 15 JAN 32



FIF

15th DEC 31 DUBLIN: via Experimental Flight to Malaya: to Singapore B/S Singapore 31 DEC 31



FIF

15th DEC 1931 DUBLIN: VIA 1st RETURN SERVICE ENGLAND TO TASMANIA: - SINGAPORE
B/S ALOR STAR KEDAH 15 JAN 32 - SINGAPORE 16 JAN 32



P/F

17th DEC 1931 DUBLIN: VIA LONDON - PORT DARWIN. B/S DARWIN AUSTRALIA 14th JAN 31

AIR MAILS

f40
e20



5705 E90

FIF

11th DEC 31 DUBLIN: Via 1st RT/SERV ENGLAND-TASMANIA TO WYNDHAM
B/S DARWIN 19 JAN 32, MELBOURNE 22 JAN 32, WYNDHAM 13 FEB 32



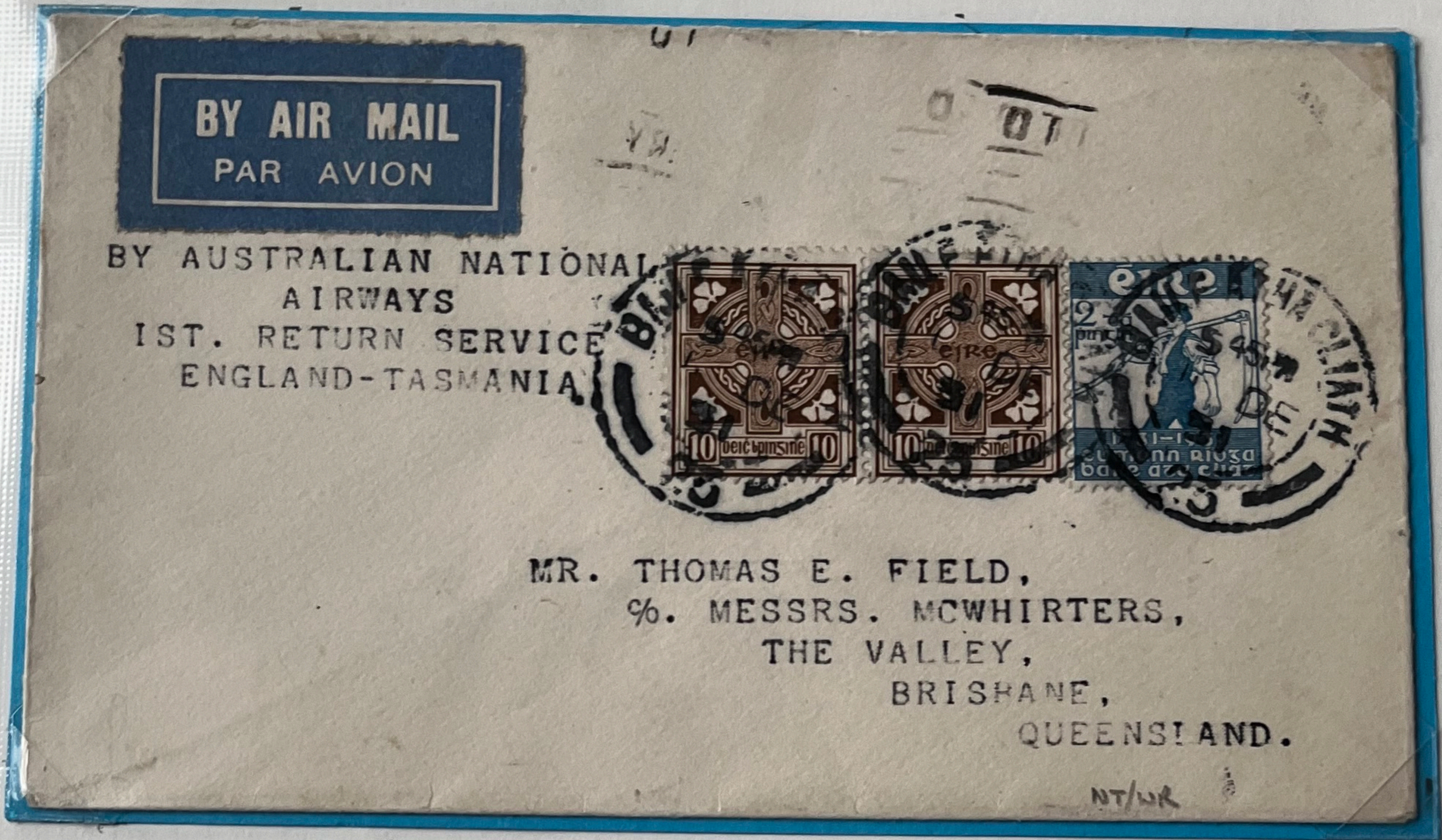
5705 E90

FIF

16th DEC 31 DUBLIN: Via 1st RT/SERV LONDON-TASMANIA TO BRISBAN Q/LAND
B/S BRISBAN 21st JAN 32

AIR MAILS

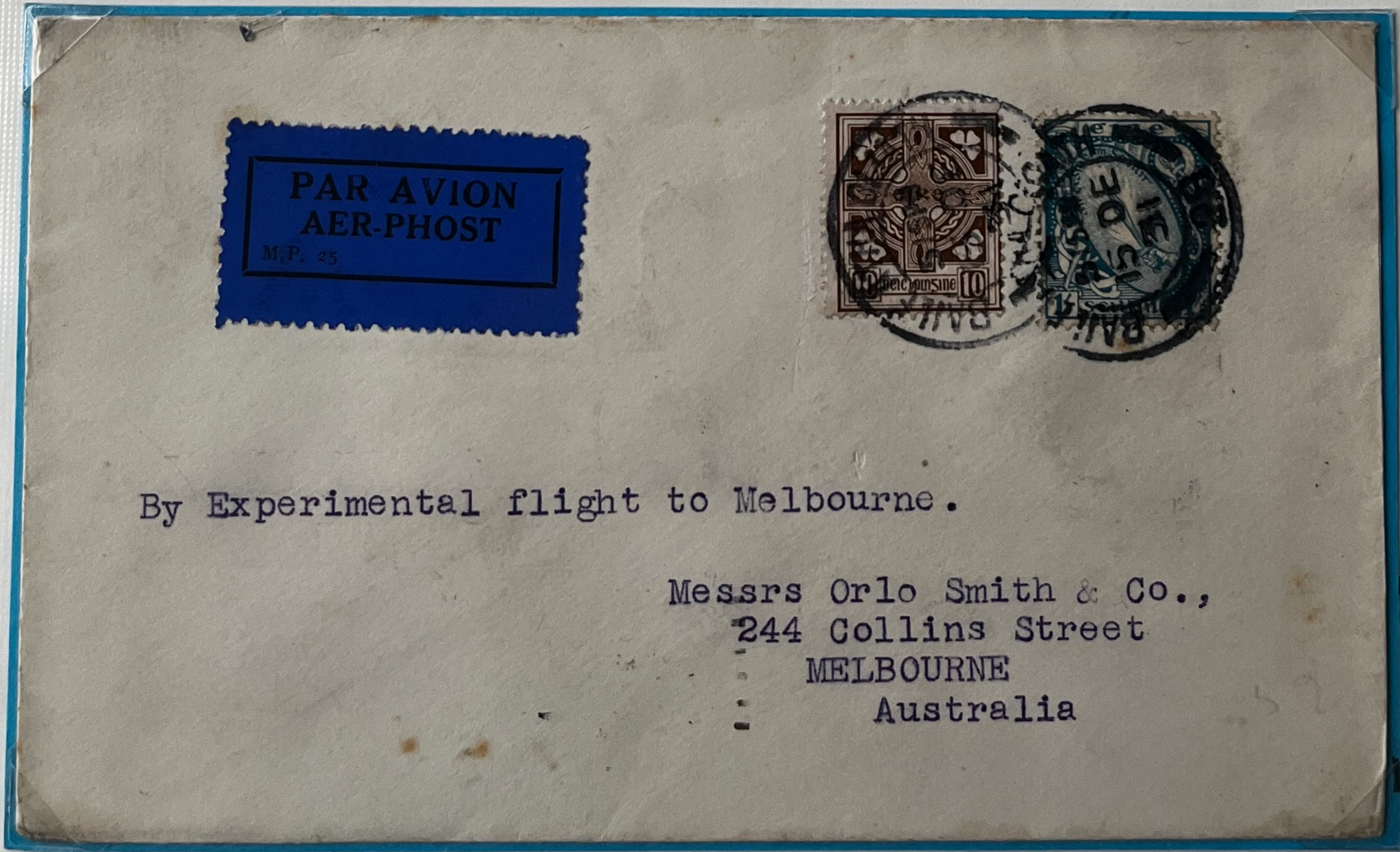
£30
£60



Stamp £90

F/F

15th DEC 31 DUBLIN: VIA 1st RT/SERV London-Tasmania to BRISBANE
BACK STAMP BRISBANE 21st JAN 32



Stamp £35

F/F

15th DEC 31 DUBLIN: BY EXP FLIGHT TO MELBOURNE: B/S MELBOURNE 22 JAN 32

AIR MAILS

E40
E40



S705 E 24

FIF 23

24 JUN 29 DUBLIN: OVER PERTH - ADELAIDE: B/S ADELAIDE 5TH AUG. 24 50 29



S705 E 24

FIF

2ND APR 31 DUBLIN: BY LONDON-INDIA EXTENDED EXPERIMENTAL FLIGHT TO AUSTRALIA

B/S SYDNEY 29TH APR 1931

AIR MAILS

£50
£50

STPS £52



STPS £57



16TH DEC 31 DUBLIN

CHRISTMAS FLIGHT TO AUSTRALIA

B/S SYDNEY 27TH JAN 32

B/S TIMARU 25TH JAN 32

MAP OF AUSTRALIA

ON BACK 14 RES

F/F

AIR MAILS

£ 40
£ 40



STB 30

F/F

23RD APR 31 DUBLIN BY SECOND EXPERIMENTAL FLIGHT LONDON TO AUSTRALIA

B/S SYDNEY N.S.W. 11TH MAY 1931



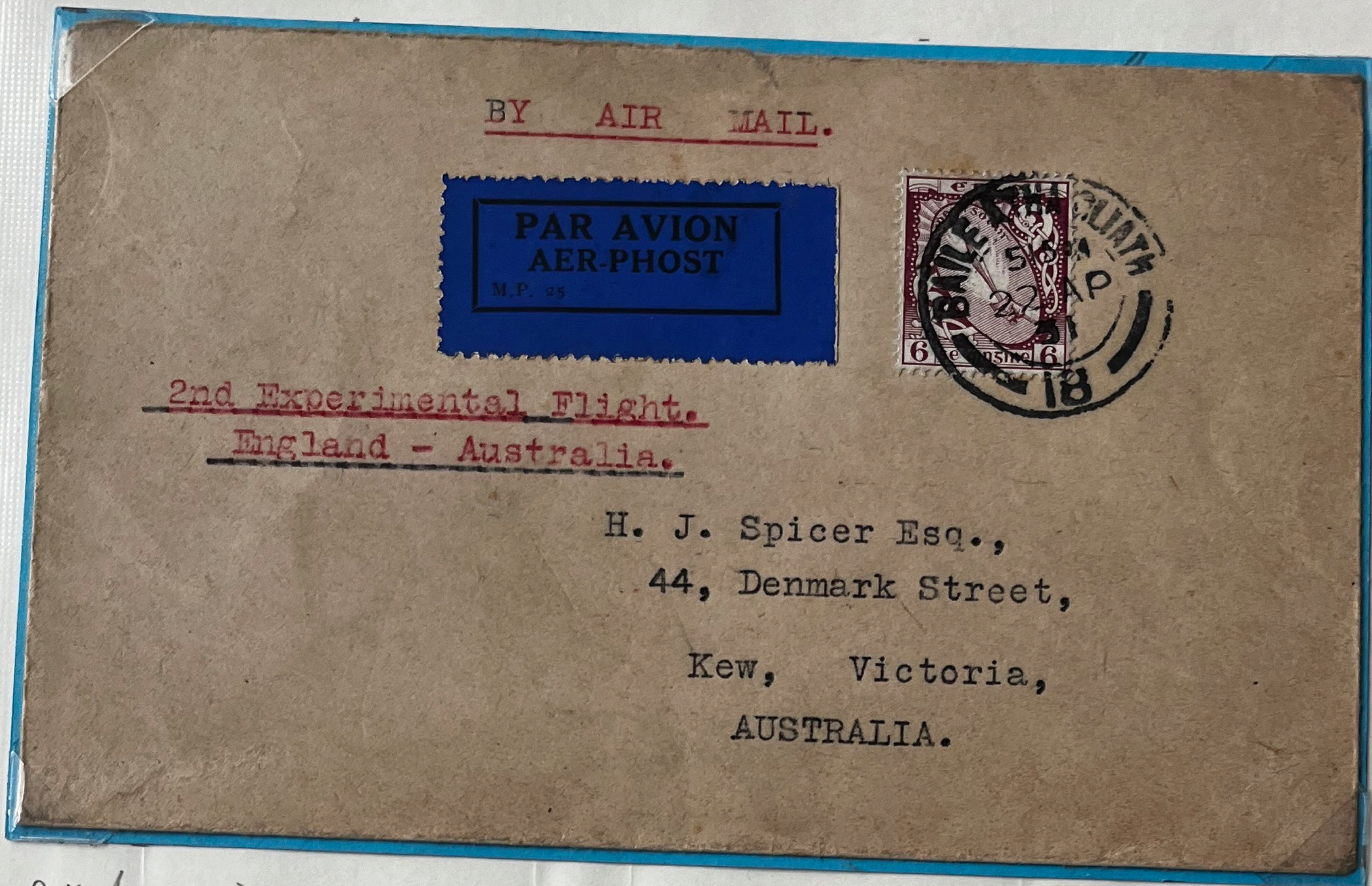
STB 30

F/F

COVER AS ABOVE B/S SYDNEY N.S.W. 14TH MAY 1931

AIR MAILS

e 50
e 20



F/F

22nd APR 1931 DUBLIN: BY 2ND EXP FLIGHT ENGLAND - AUSTRALIA - TO KEW VICTORIA
 B/S KEW VICTORIA 14th MAY 1931



5705 E 27

F/F

23rd APR 31 DUBLIN: BY 2ND EXP FLIGHT ENGLAND - AUSTRALIA TO WELLINGTON N.Z.
 B/S SYDNEY N.S.W. 14th MAY 31. + WELLINGTON N.Z. 18th MAY 31

AIR MAILS

€50
€50



STOS €50

FIF

6th DEC 34 DUBLIN: BY LONDON-SINGAPOUR SERVICE EXTENDED TO AUSTRALIA
B/S. MELBOURNE VICTORIA 22 DEC 1934



FIF

REL COVER AS ABOVE B/S SYDNEY 24 JAN 35

AIR MAILS

330



-Blackall.

John S. Davis Esq.,
Poste Restante,
BLACKALL. Queensland
Australia.

5th XII-34 DUBLIN:- BY LONDON TO SINGAPOUR EXTENDED TO AUSTRALIA

B/S BLACKALL QUEENSLAND 21ST DEC 34

50632

F/P

60

AIR MAILS

E30



S105 E32

OPENING OF THE AIR MAIL SERVICE BY IMPERIAL AIRWAYS AND QANTAS EMPIRE AIRWAYS BETWEEN ENGLAND AND AUSTRALIA

John S. Davis Esq.,
Poste Restante,
Camooweal.
Queensland.
AUSTRALIA.

F/F

5th XII - DUBLIN: BY LONDON-SINGAPOUR EXTENDED TO AUSTRALIA

B/S CAMOOWEAL QUEENSLAND 21ST DEC 34

60

AIR MAILS

€30



5705 E32

F/P

5th XII-34 DUBLIN: BY LONDON - SINGAPORE EXTENDED TO AUSTRALIA

B/S CHARLEVILLE QUEENSLAND 21st DEC 34

60

AIR MAILS

30



5272 232

F/P

5th XII-34 DUBLIN: BY LONDON - SINGAPOUR EXTENDED TO AUSTRALIA
 B/S CLONCURRY QUEENSLAND 21st DEC 34

460

AIR MAILS

30



57 93

- Newcastle Waters

OPENING OF THE AIR MAIL SERVICE BY IMPERIAL AIRWAYS AND QANTAS EMPIRE AIRWAYS BETWEEN ENGLAND AND AUSTRALIA

John S. Davis Esq.,
Poste Restante,
Newcastle Waters,
Northern Territory,
AUSTRALIA.

418

5TH XII - DUBLIN: - BY LONDON - SINGAPORE EXTENDED TO AUSTRALIA

B/S NEWCASTLE WATERS NORTHERN AUSTRALIA 19TH DEC 34

460

AIR MAILS

E50



S78 E62

F17

5TH DEC 34 DUBLIN - LONDON - SINGAPOUR EXTENDED TO AUSTRALIA

B/S ALBERTON SOUTH AUSTRALIA 23RD DEC 34

460

AIR MAILS

60



5775 E27

F17

Highhead - London E.C. 4,
England - Australia

Mr E.A. Crome
32 Cavendish Street
Stanmore NSW Australia

7th DEC HOLYHEAD - LONDON T.P.O. BY LONDON - SINGAPORE EXTENDED TO AUSTRALIA

BIS. STANMORE N.S.W. 22nd DEC 34

H60

AIR MAILS

E 30



18th NOV HOBART: BY SPECIAL AIR MAIL FLIGHT AUSTRALIA-ENGLAND TO GOREY (IRELAND)

BACIL :- MAP OF ROUTE IN RED

AIR MAILS

€ 36
€ 30



FIF

12th NOV 31 NZ. BY CHRISTMAS AIR MAIL FIRST OFFICIAL FLIGHT: NEW ZEALAND - AUSTRALIA - LONDON 1931



FIF

21st FEB 38 ADELAIDE. BY FIRST DIRECT ROUTE AIRCRAFT WEEKLY SERVICE 1938
AUSTRALIA - ENGLAND COST 5^d FOR 1/2 OZ NO BS

AIR MAILS

€30

€30



6th DEC 1934:- ILFRACOMBE:- BY AIR MAIL SERVICE AUSTRALIA-ENGLAND. TO DUBLIN

F 1P



7th 12-37 DUBLIN:- VIA LONDON - AUSTRALIA B/S MELBOURNE 21 SEPT 37

STP € Gr

NOT F/P

1460

AIR MAILS

30
30



6th DEC 34 ILFRACOMBE Q/LAND: BY AIR MAIL SERVICE AUSTRALIA-ENGLAND TO DUBLIN

FIF



7th DEC 34 EAST GEELONG VICTORY: BY AIR MAIL SERVICE AUSTRALIA-ENGLAND TO DUBLIN

FIF

AIR MAILS

£20 each.



14th FEB 1941: BOWRAL Australia: via CALIFORNIA CLIPPER ON "THE LONG ROUTE"



2nd JULY - 1941 Aus: via CALIFORNIA CLIPPER ON THE LONG ROUTE

NOT A/P 23.

AIR MAILS

E20



FIF

16th NOV 1931:- By Special Air Mail Flight AUSTRALIA - ENGLAND to BELFAST.

AIR MAILS

€ 20 profit



2ND DEC 34. BRISBANE: VIA AUSTRALIA - LONDON RETURN FEELT BY LISBURN 25 DEC 34



Rate 5/10

FOR SERVICE

Over the Long Route

BY CALIFORNIA CLIPPER

VIA USA