

# Monaco

1215/13 8,5

1980



8,5

# Monaco

1980

1776/322 2715



1699



1030



1777



1776



1778



1774/25-116



1771



1772

271

# Monaco

1980



*"... pays dont les frontières ne sont que fleurs" (COLETTE)*  
MONACO  
*"... où l'autorité d'un seul garde la liberté de tous" (PAGNOL)*



BFI 8

# Monaco

1980



1201/201 - 03



1205/205 - 7



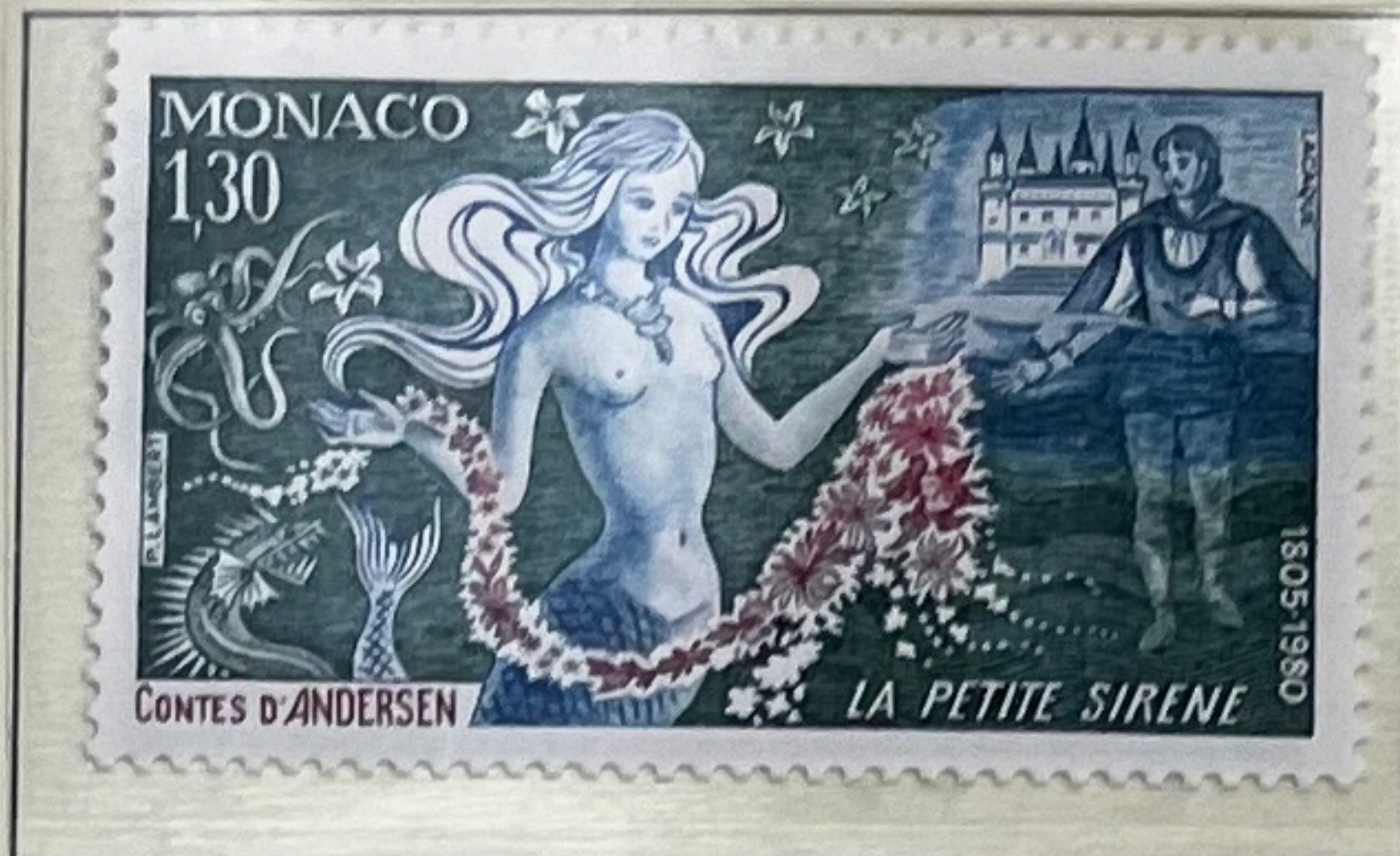
1207 - 0

36

# Monaco

1980

1235/40 10



1248



1247 - 2,2

1248 = 4,5

1249 = 2,8

1249



1715-1718  
1719-1720  
1721-1722  
1723-1724  
1725-1726  
1727-1728  
1729-1730  
1731-1732  
1733-1734  
1735-1736  
1737-1738  
1739-1740  
1741-1742  
1743-1744  
1745-1746  
1747-1748  
1749-1750  
1751-1752  
1753-1754  
1755-1756  
1757-1758  
1759-1760  
1761-1762  
1763-1764  
1765-1766  
1767-1768  
1769-1770  
1771-1772  
1773-1774  
1775-1776  
1777-1778  
1779-1780  
1781-1782  
1783-1784  
1785-1786  
1787-1788  
1789-1790  
1791-1792  
1793-1794  
1795-1796  
1797-1798  
1799-1800

806  
908



# Monaco

1960



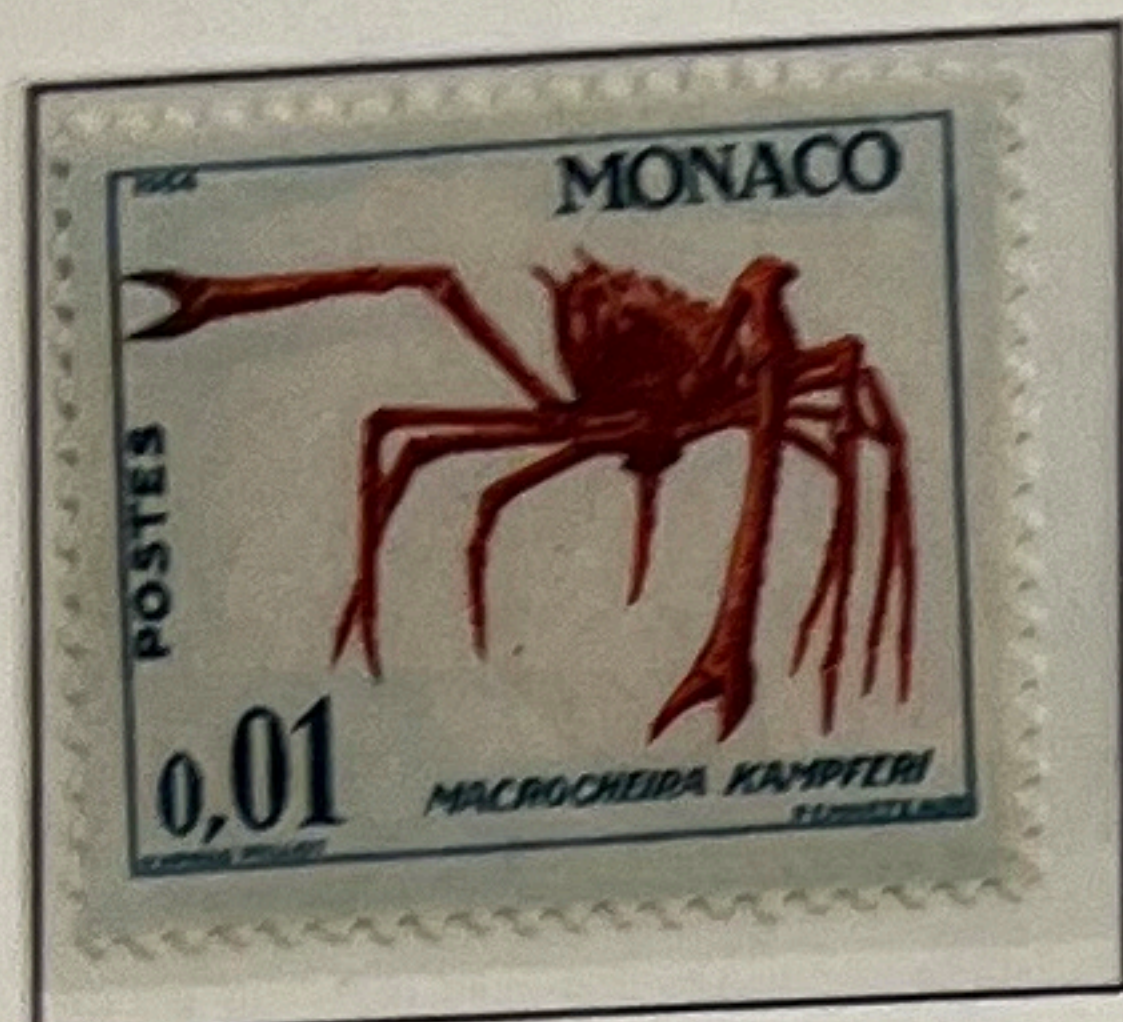
# Monaco

1960



# Monaco

1960/64



1960/71



vert-bleu/rose-lilas



brun-orange/carmin



sépia/vert



lilas-rose/gris



1969



1969



0.95 POSTES 0.95



1971

1.10 POSTES 1.10



1.30 POSTES 1.30



1966

2.30 POSTES 2.30

# Monaco

1960/71



1969



1971



1969



1971



1971



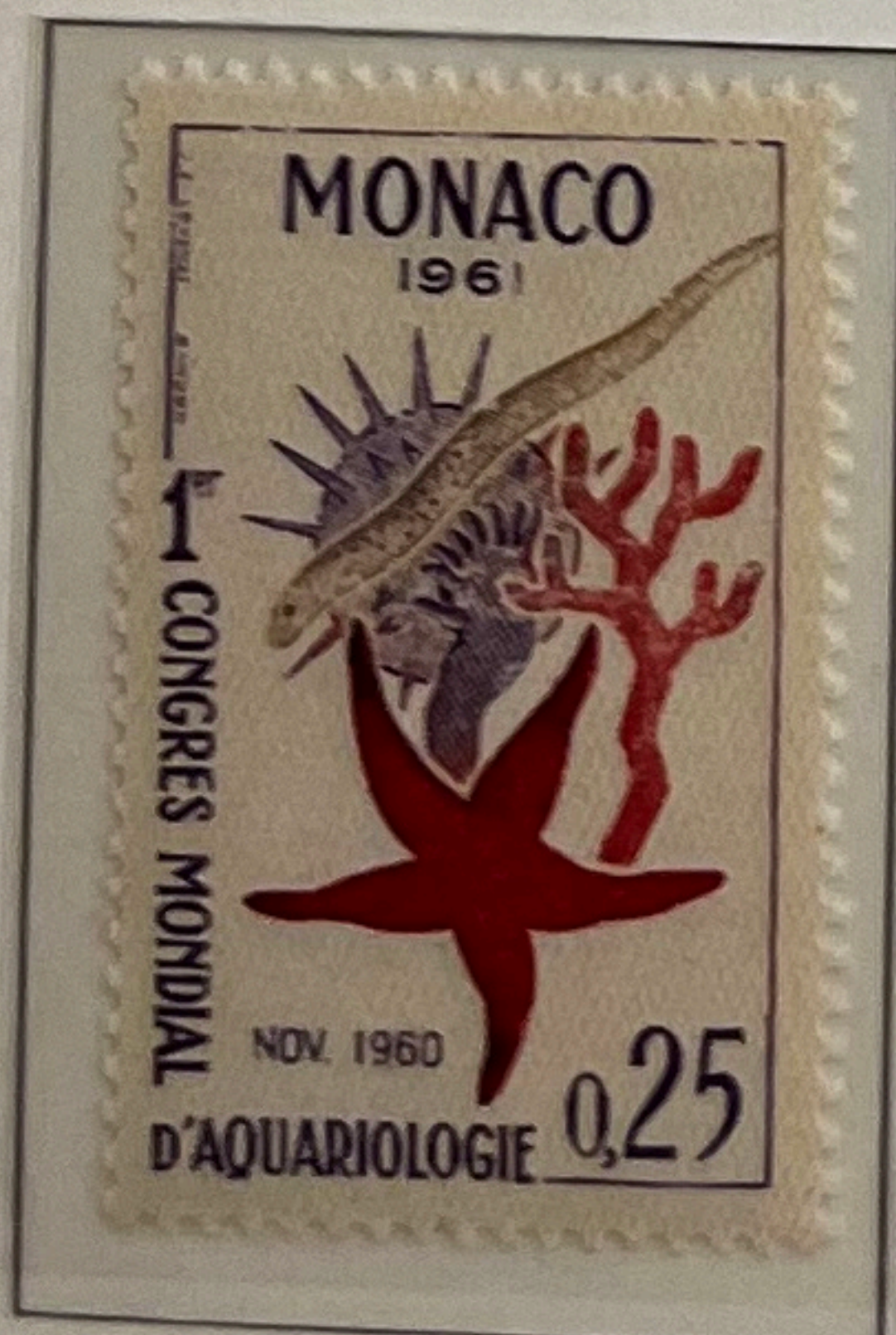
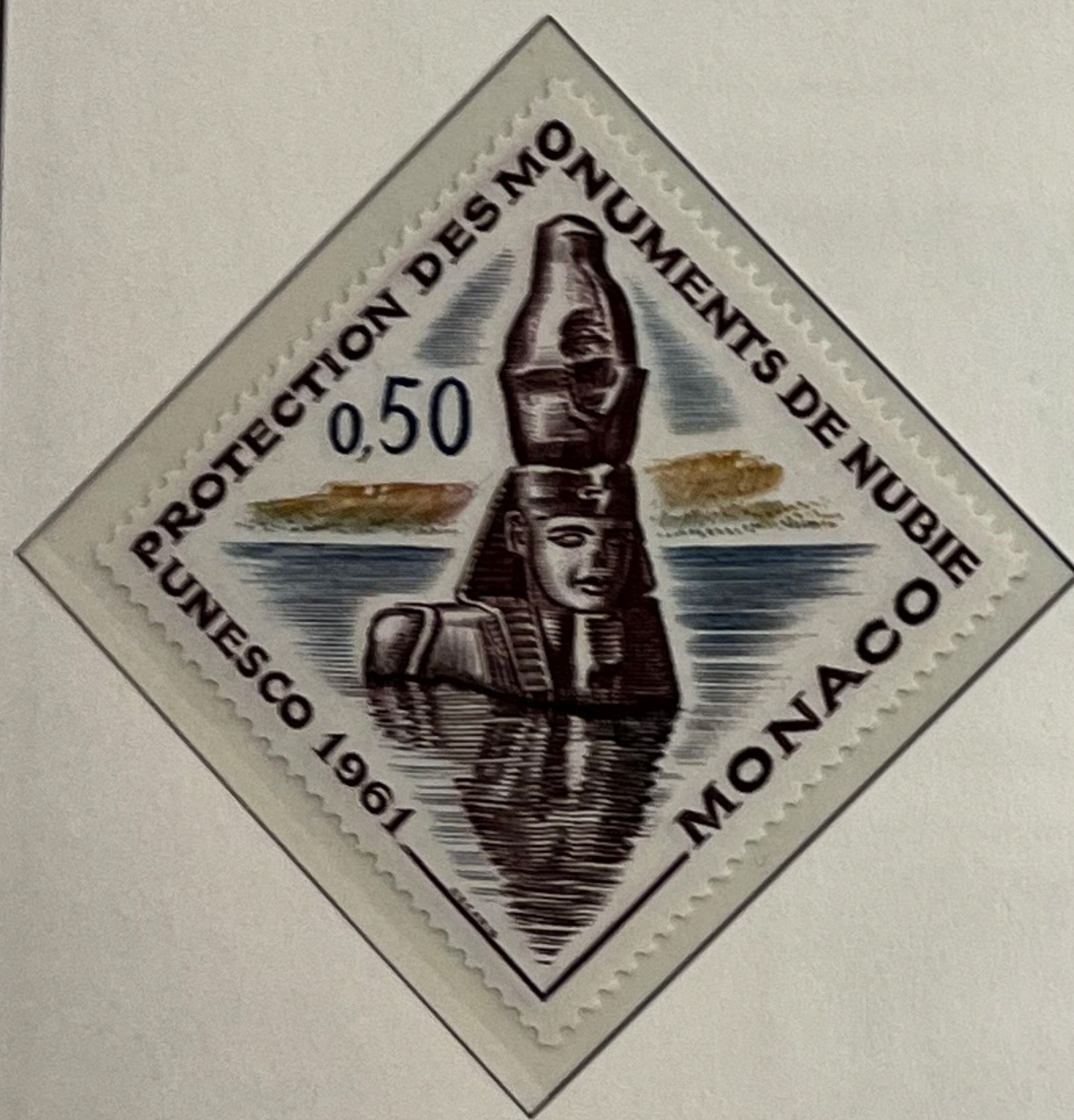
# Monaco

1960/61

Poste Aérienne



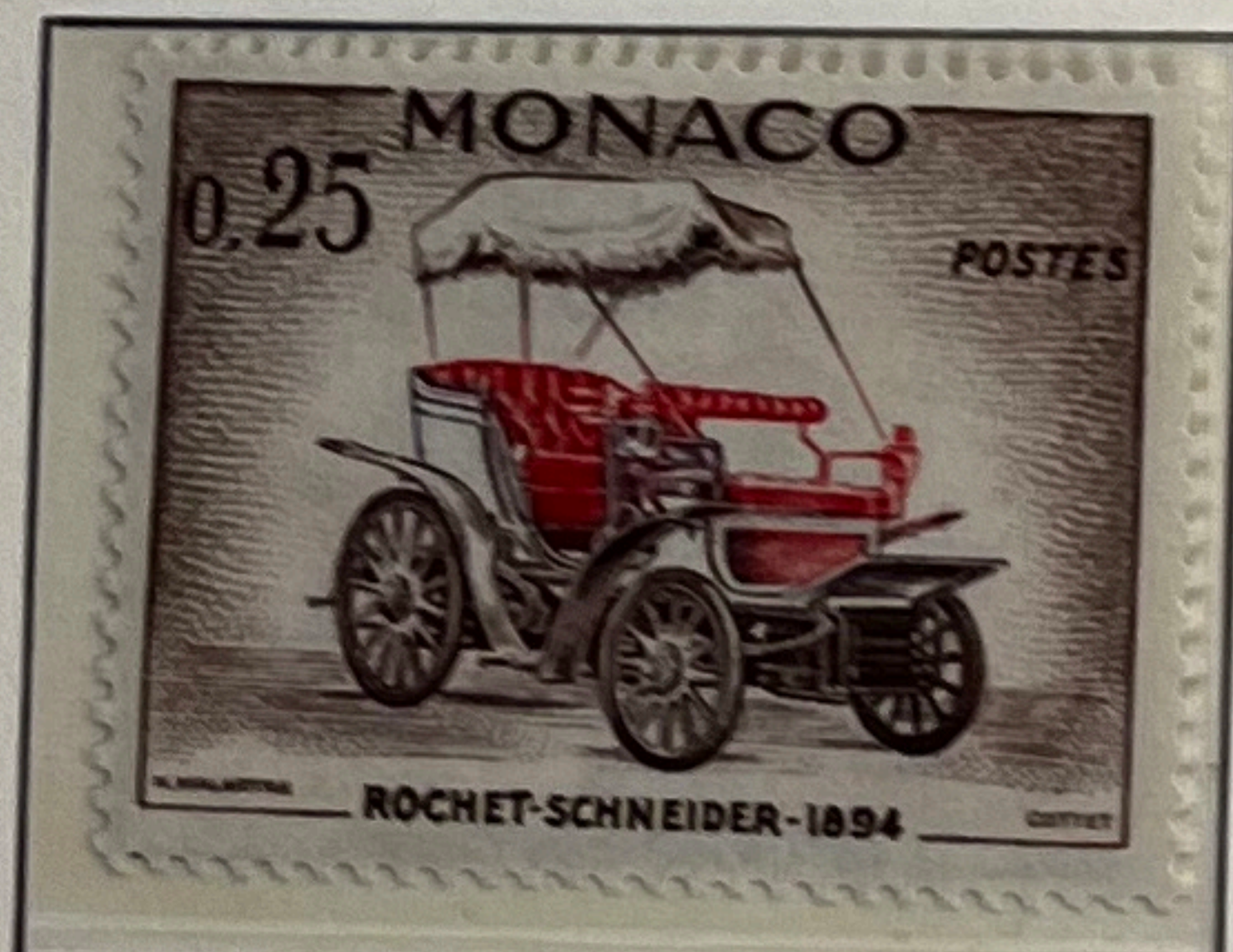
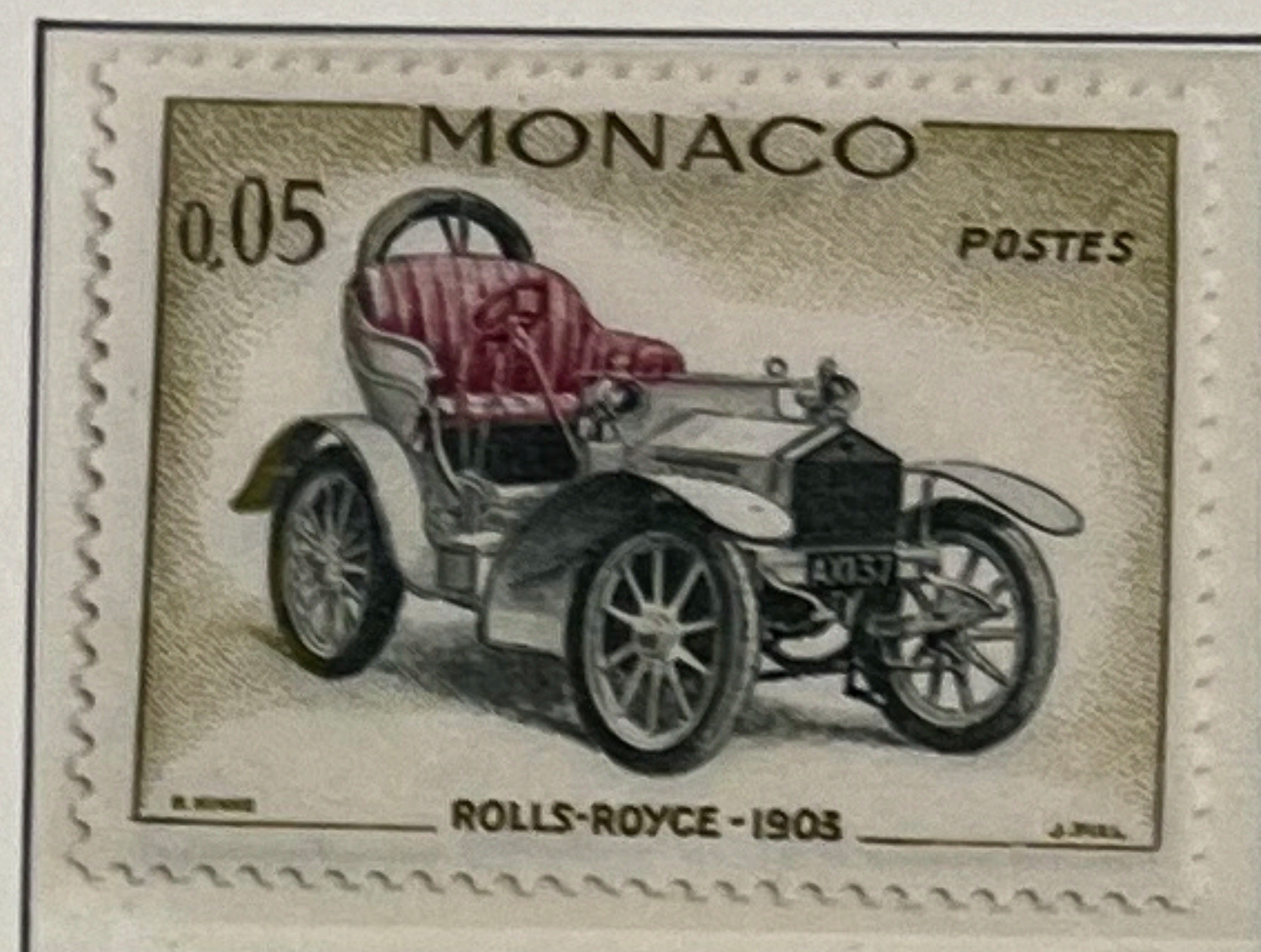
1961



# Monaco

1961

657/702 18



18

# Monaco

1962



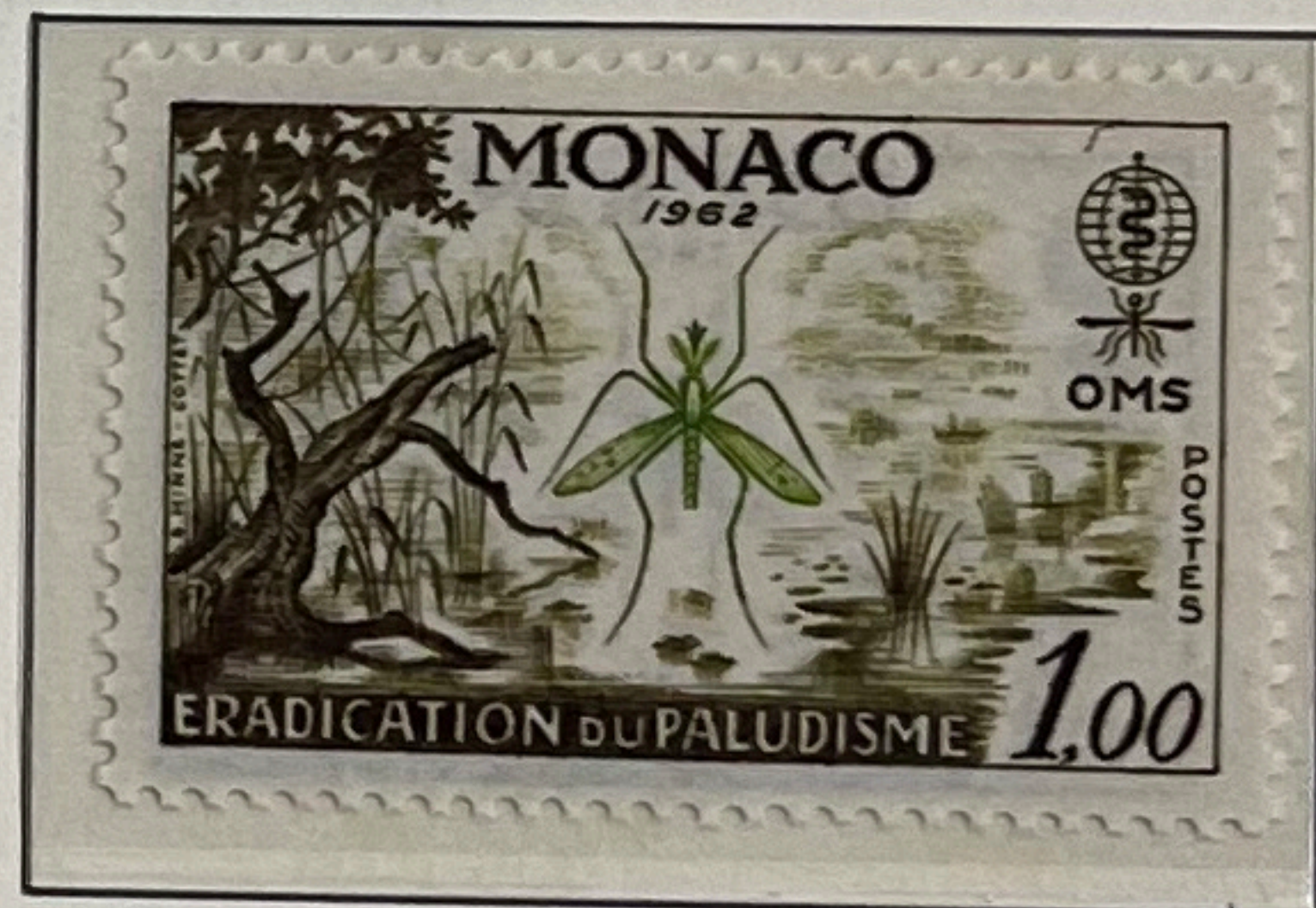
54-A



54-C



580



577



575



A80

54-A =

= 3.12

= 1.6

= 3.6

= 10

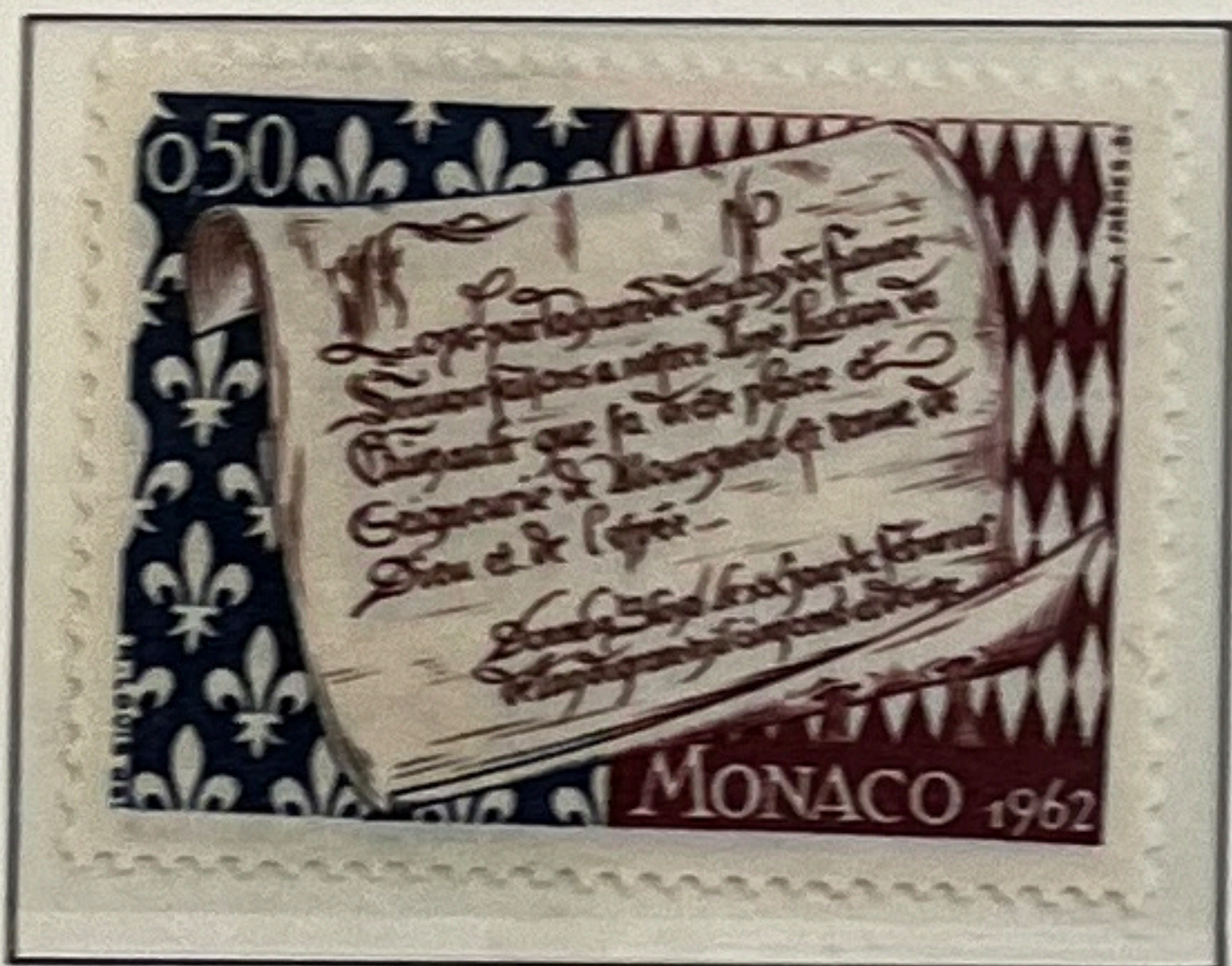
17.4

# Monaco

1962



576/170 = 2,5



576/170 + 576/171 = 2,5



A17

617

# Monaco

1962



598 = 1



591/97 = 6



7

# Monaco

1962

981/90 = 13



13

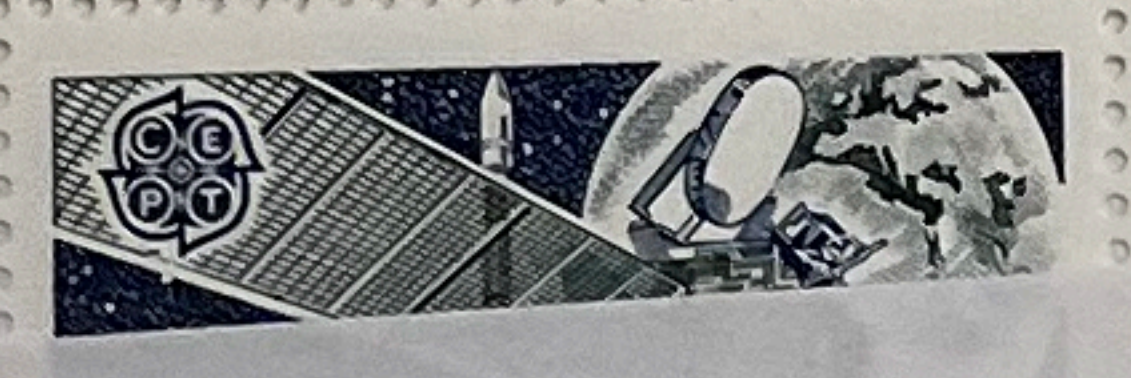


12

xx MONACO 1/1  
1960 523/44/45<sup>A</sup>  
546<sup>A</sup>/47/47<sup>A</sup>  
548/48<sup>A</sup>/49  
549<sup>A</sup>/50/50<sup>A</sup>

xx MONACO 1/1  
1960  
529/30/31

xx MONACO 1/1  
1960  
540 x 2



*Le jeu de billes*  
**PRINCIPALITE DE MONACO**  
*La corde à sauter*



1.30 POSTES 1.30 2.30 POSTES 2.30 2.30

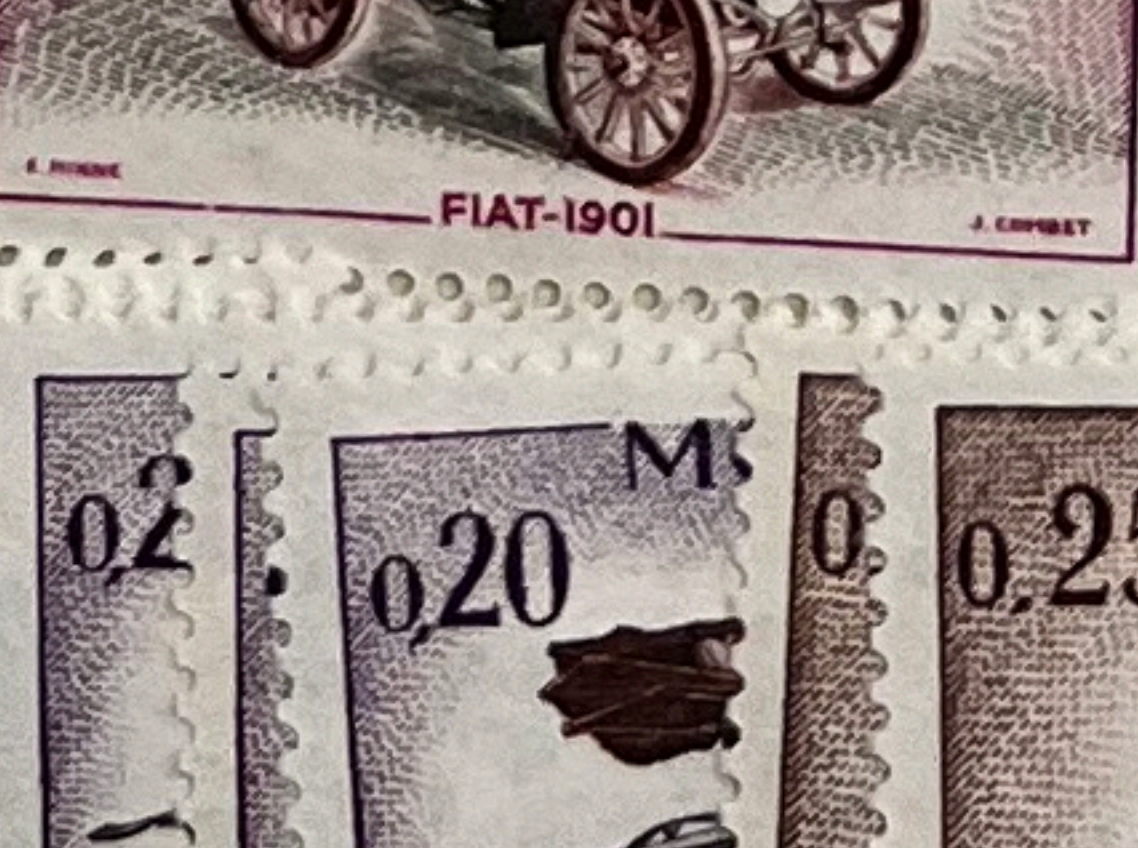
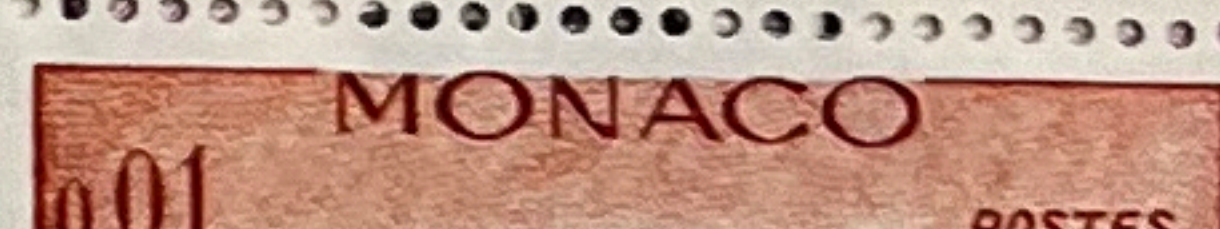
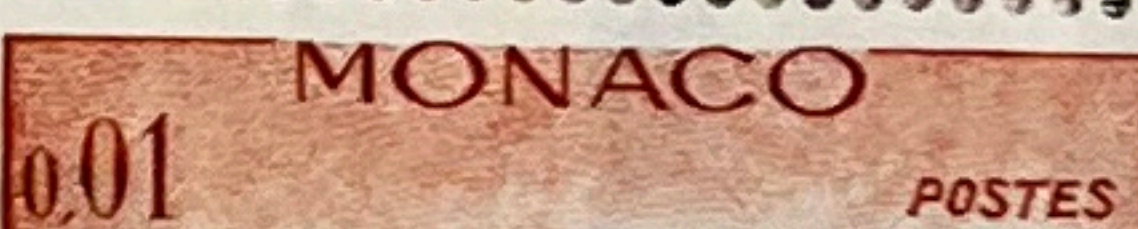
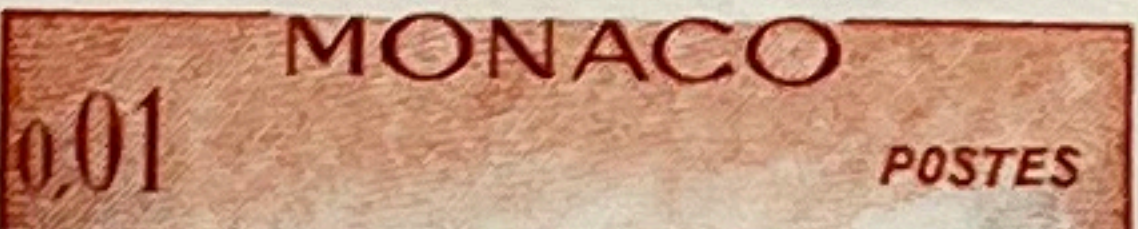
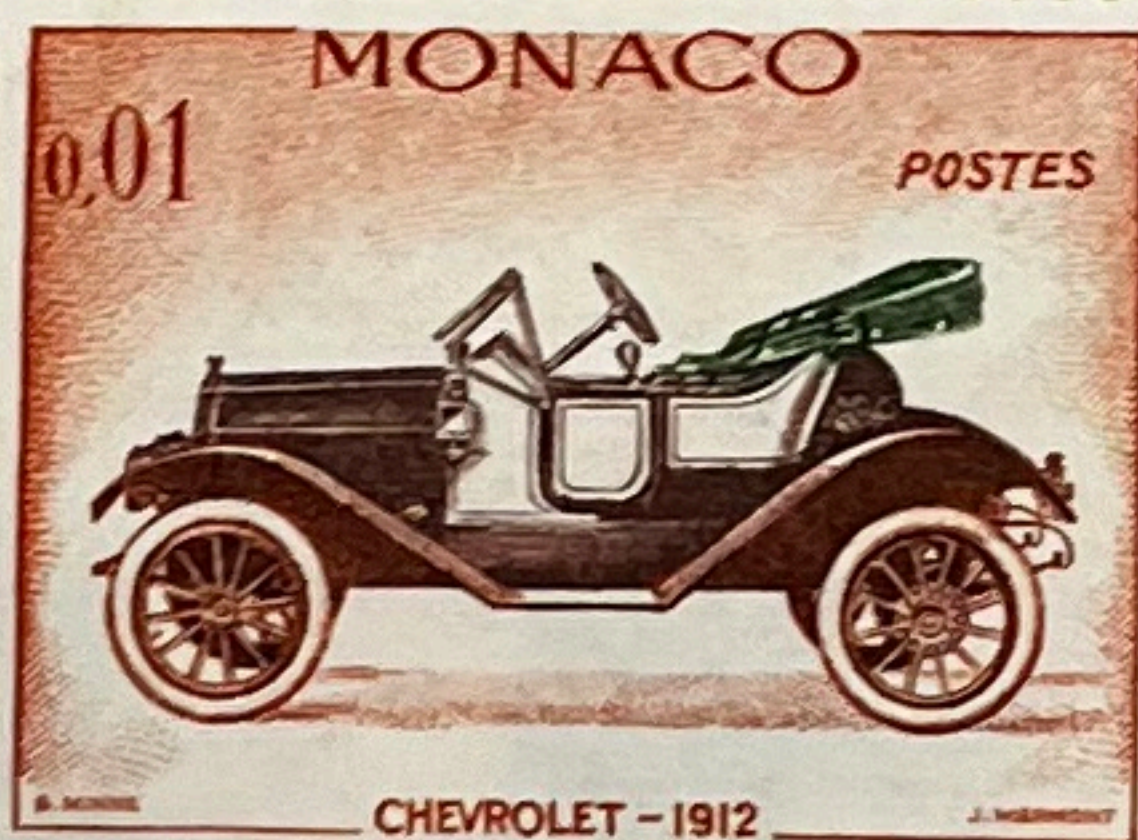
XX MONACO 4/7

1961 551/5454

555 — 570

MONACO

XX — 1961

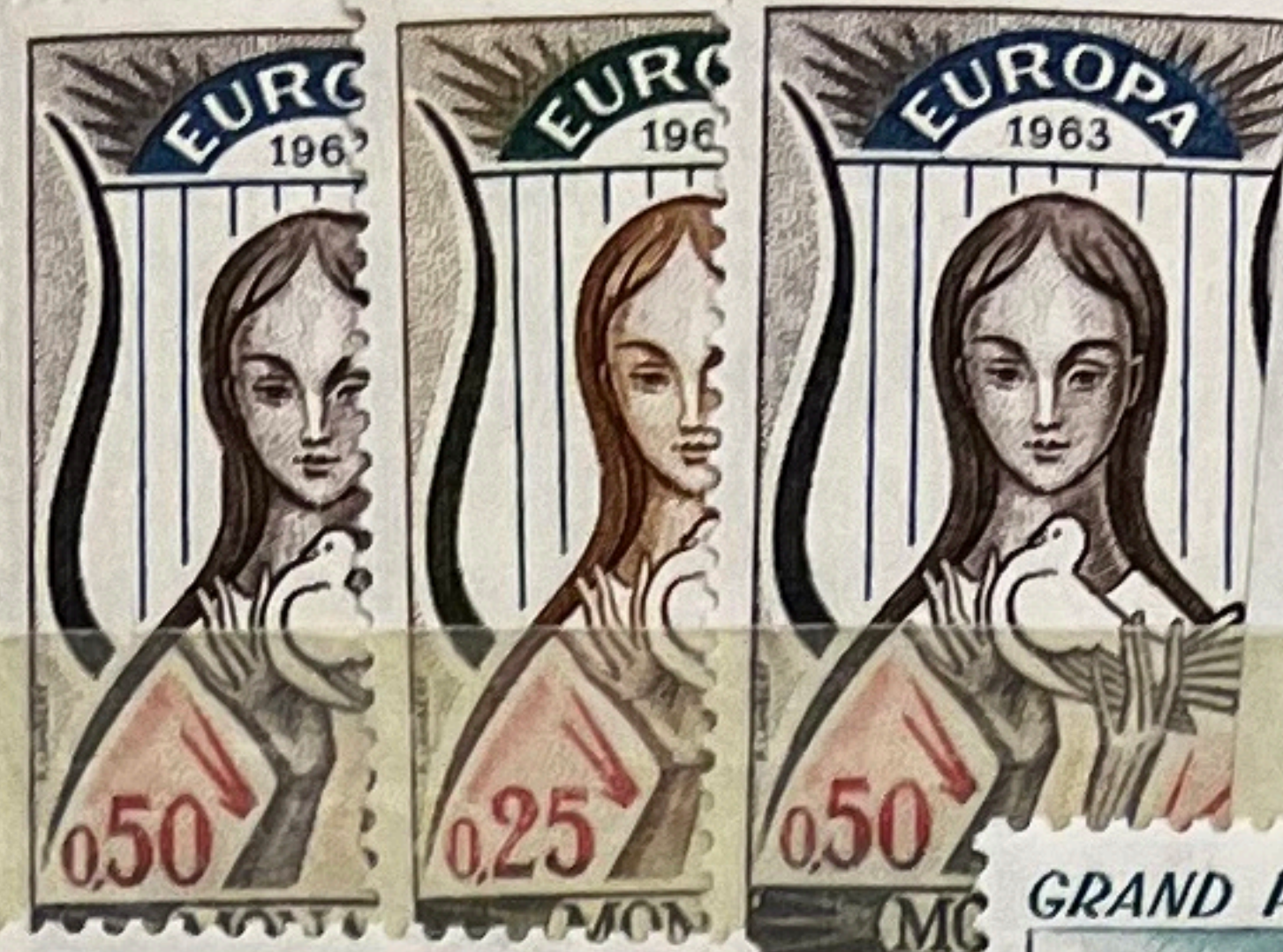


1962 - 200 - 939

MONACO  
XX - 1962

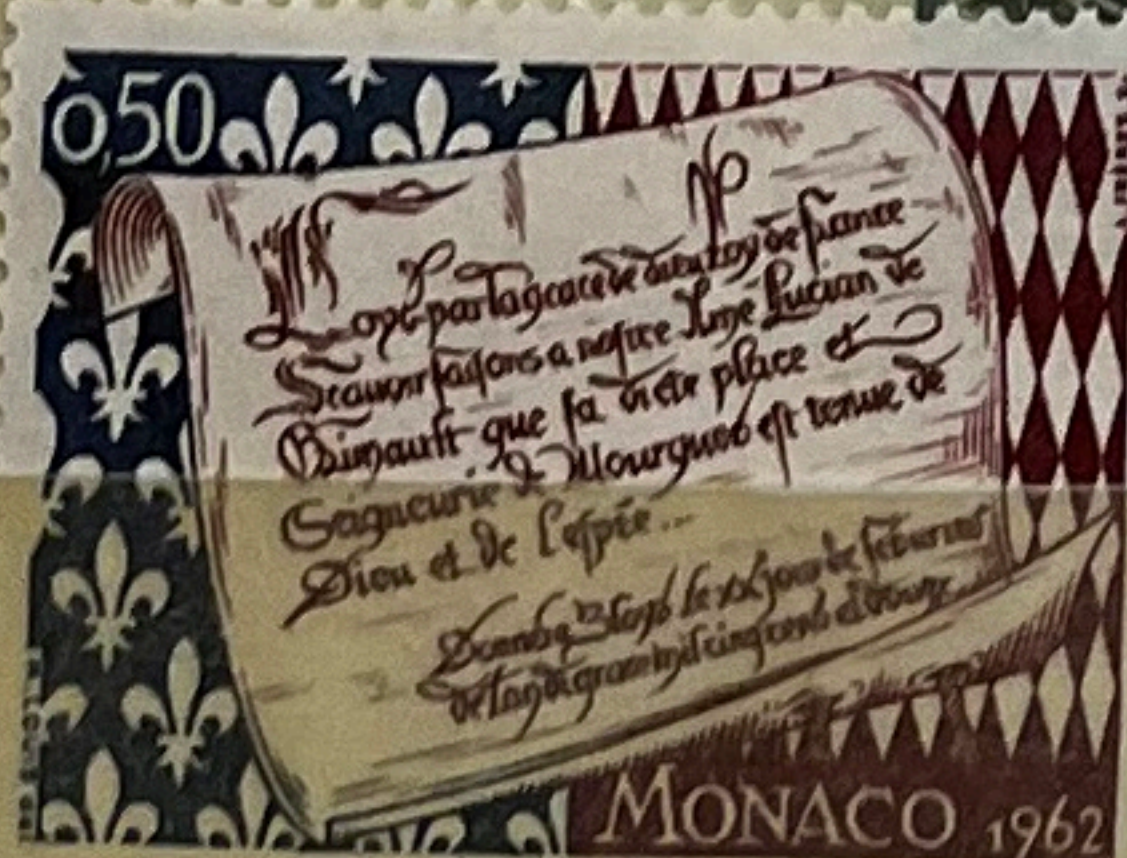


MONACO  
XX - 1963



- 7.12.62

SCOLATEX MONACO



xx MONACO 7/7  
1963  
608 x 1  
609 x 1  
618 x 1



xx MONACO 1/1

1964

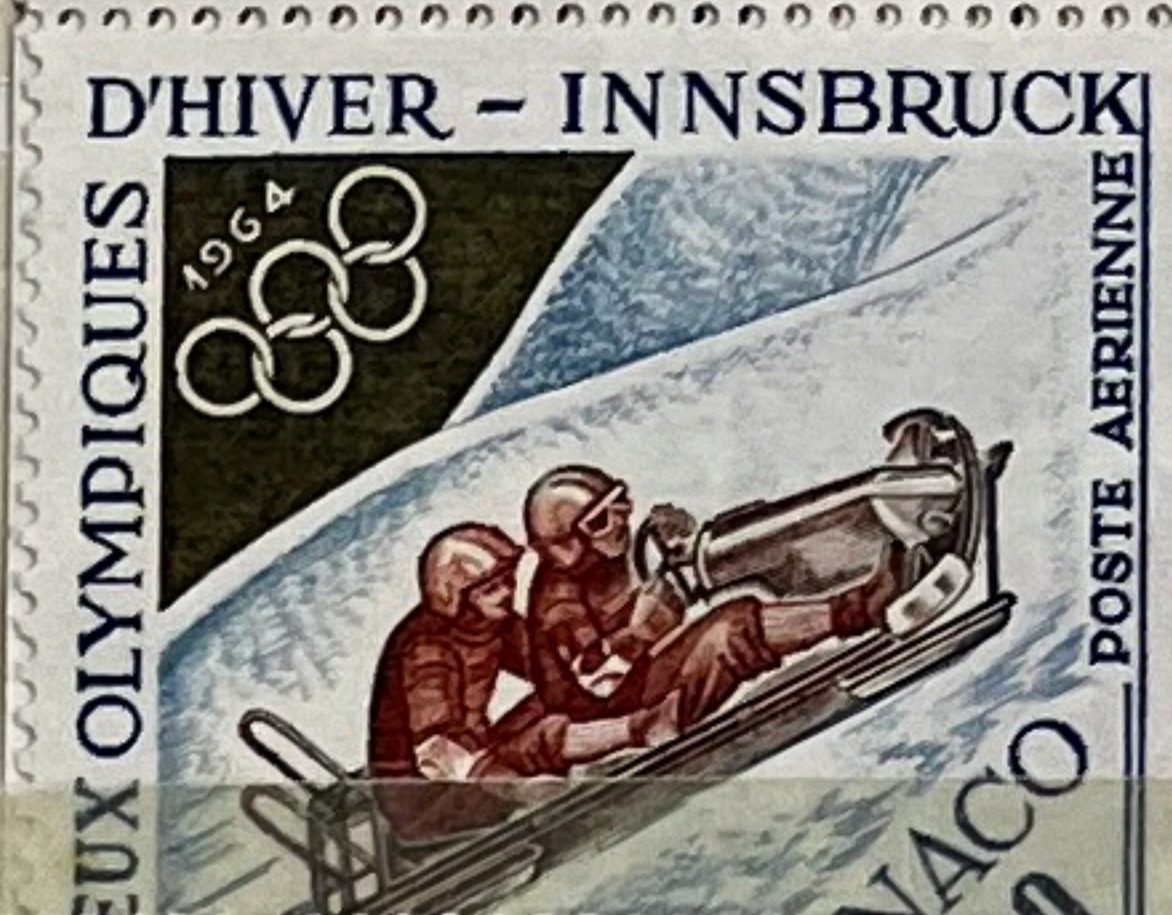
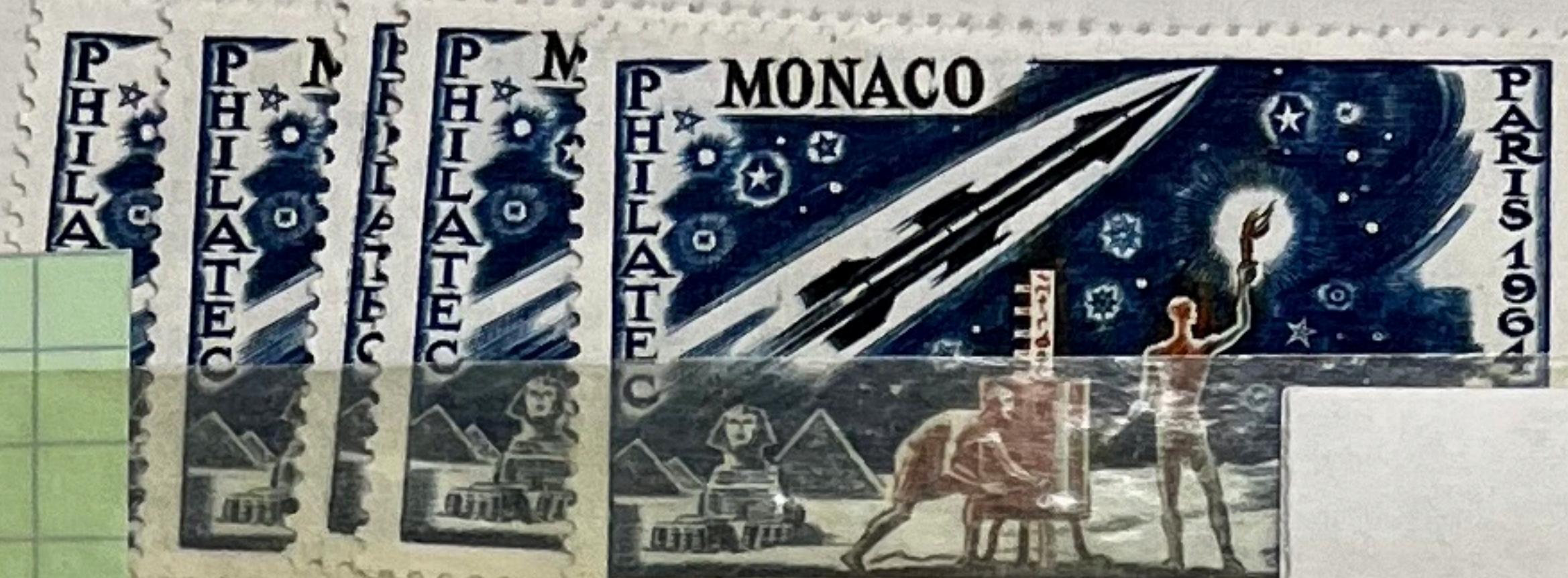
636/37/42/43

644/48/46/47/48

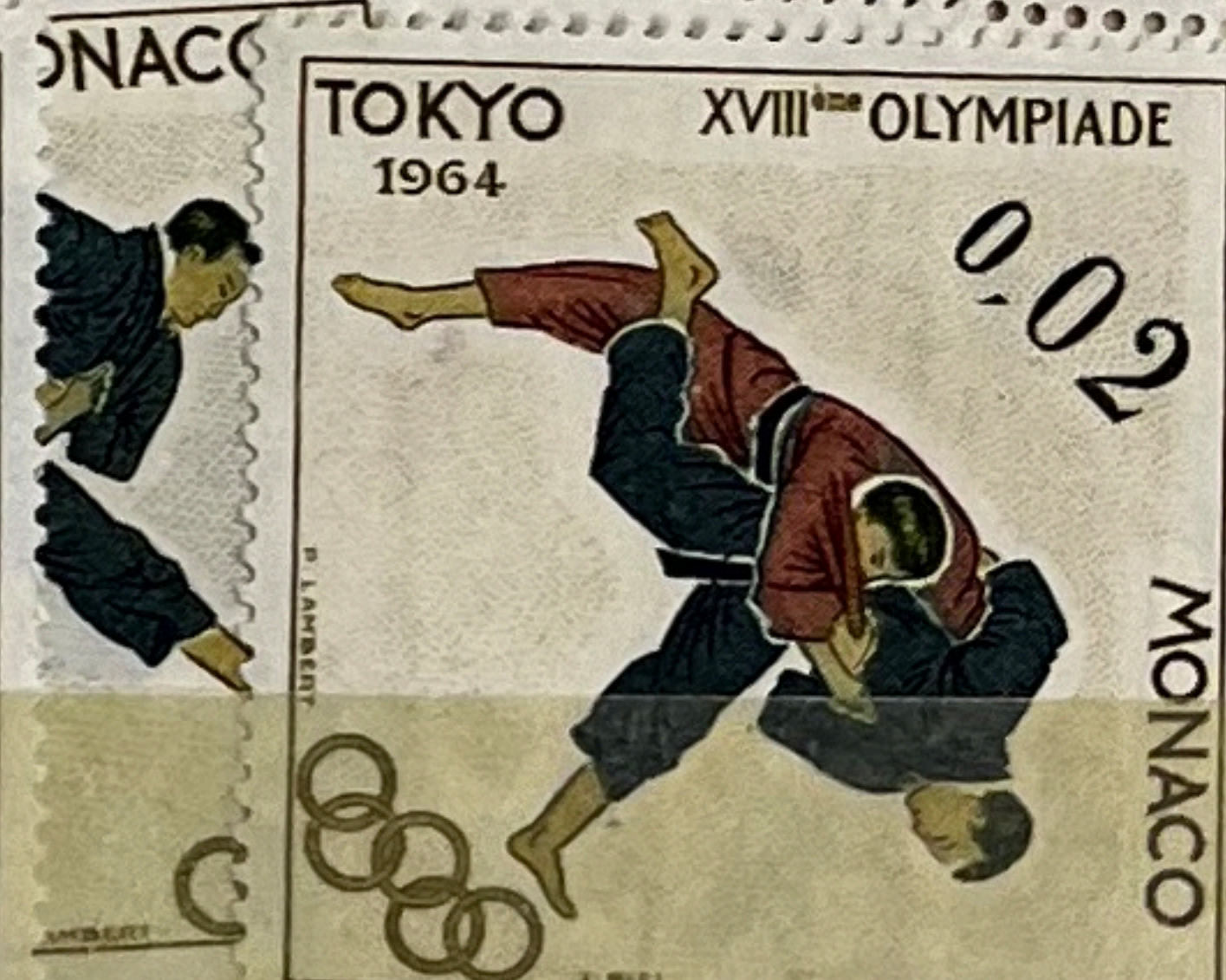
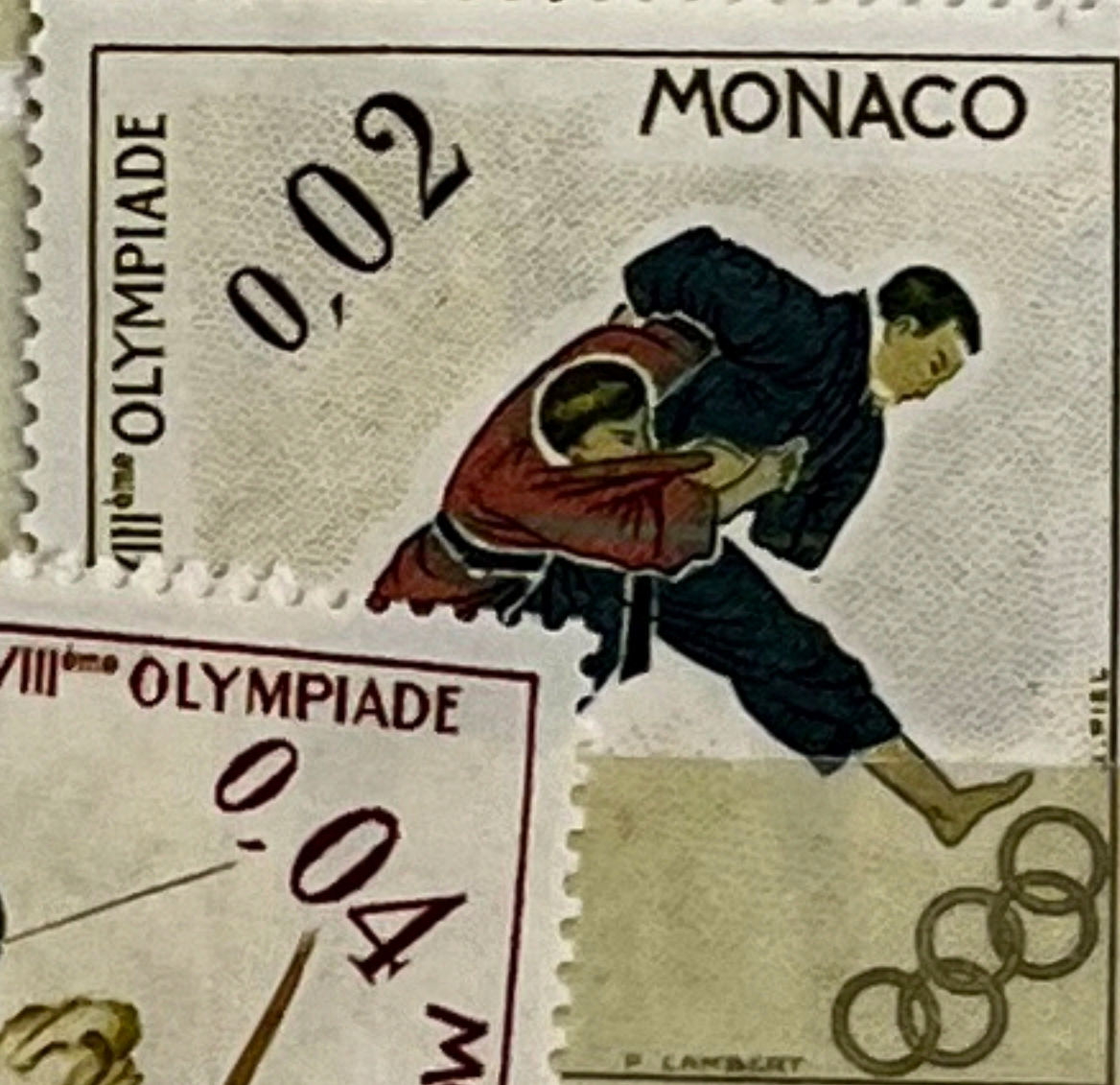
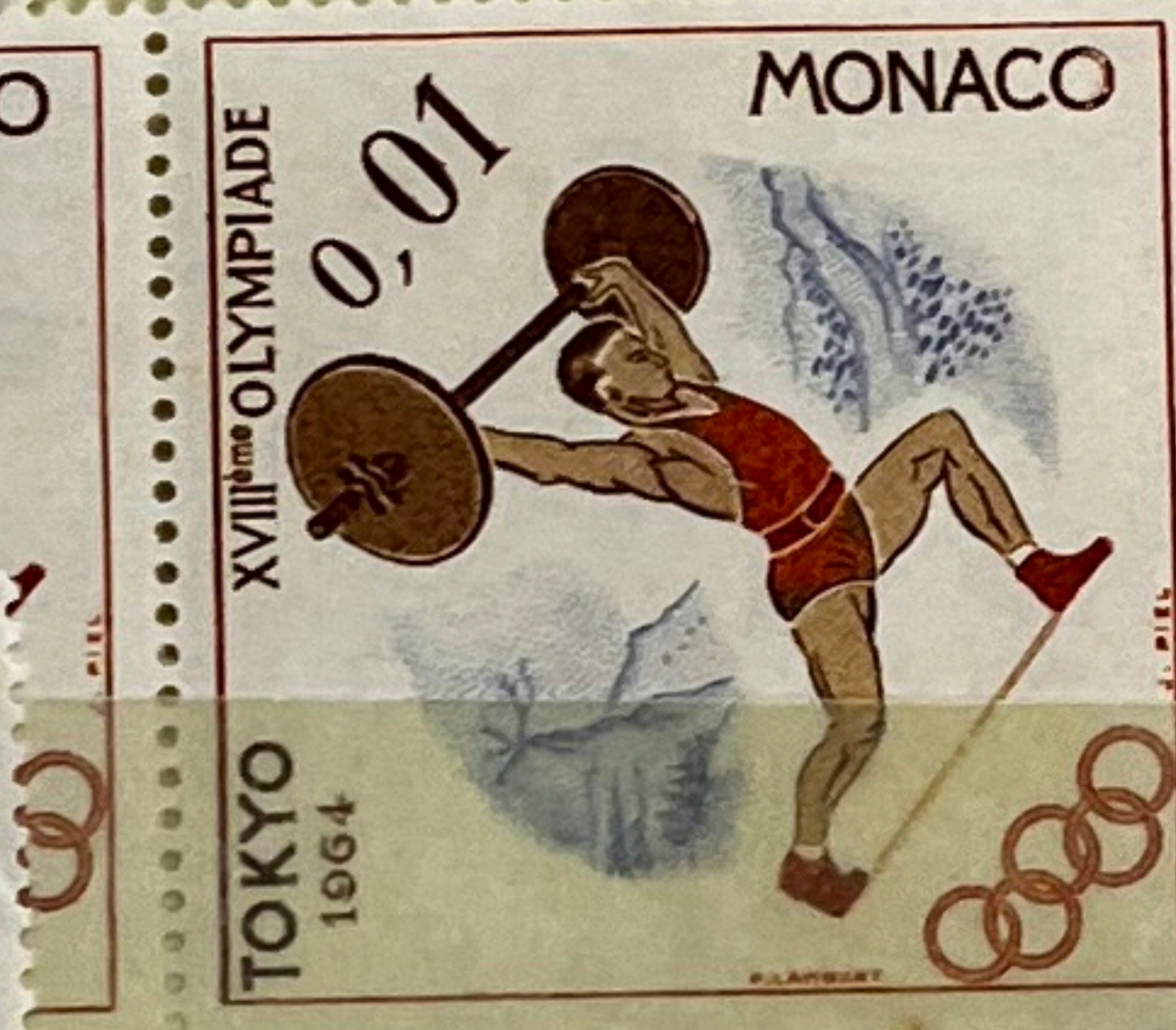
649/50/51/52/53

656/59/60/62

MONACO  
xx - 1964

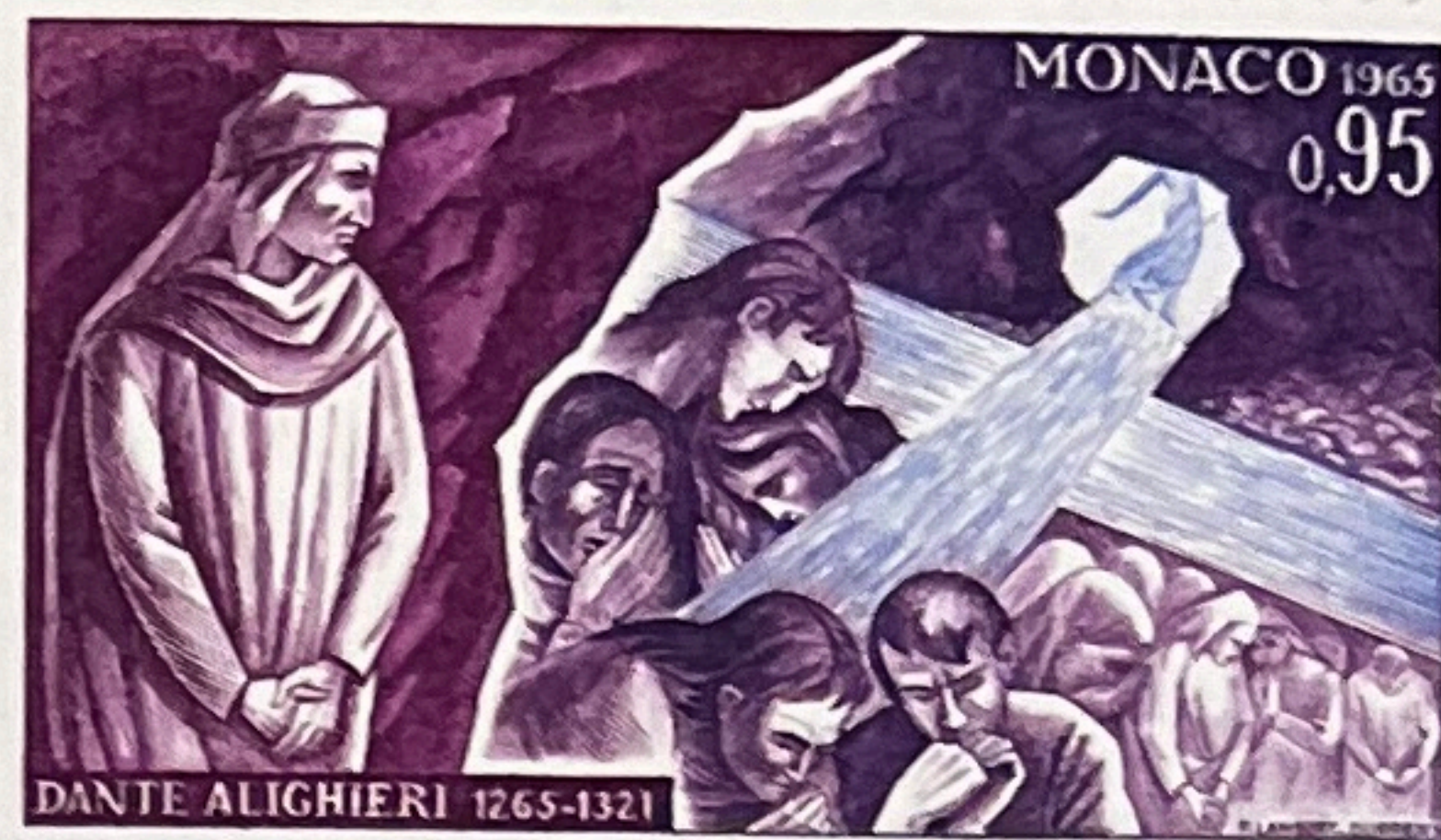


7.64

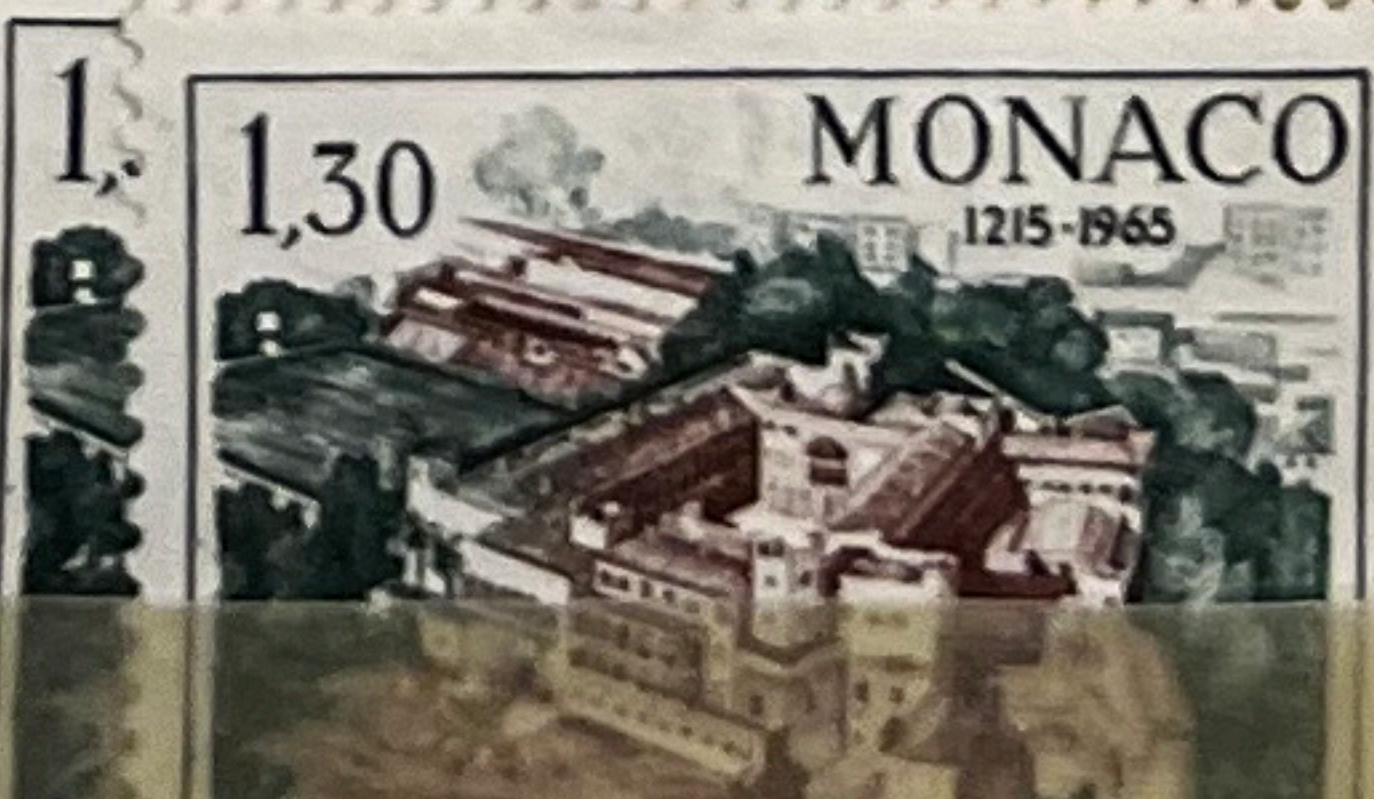
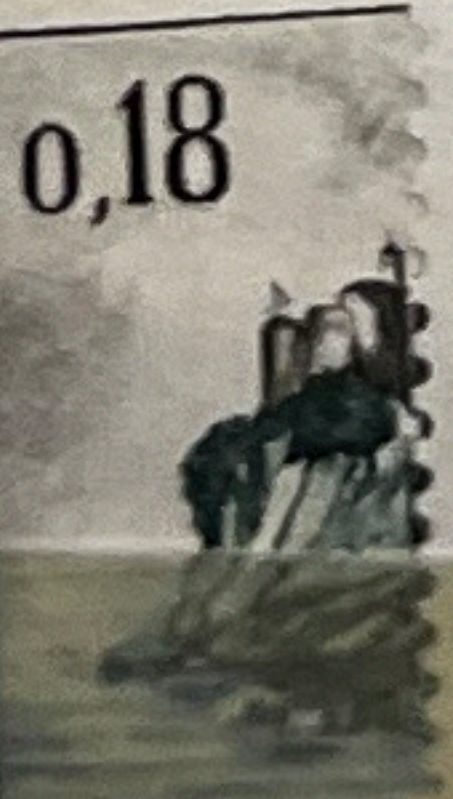
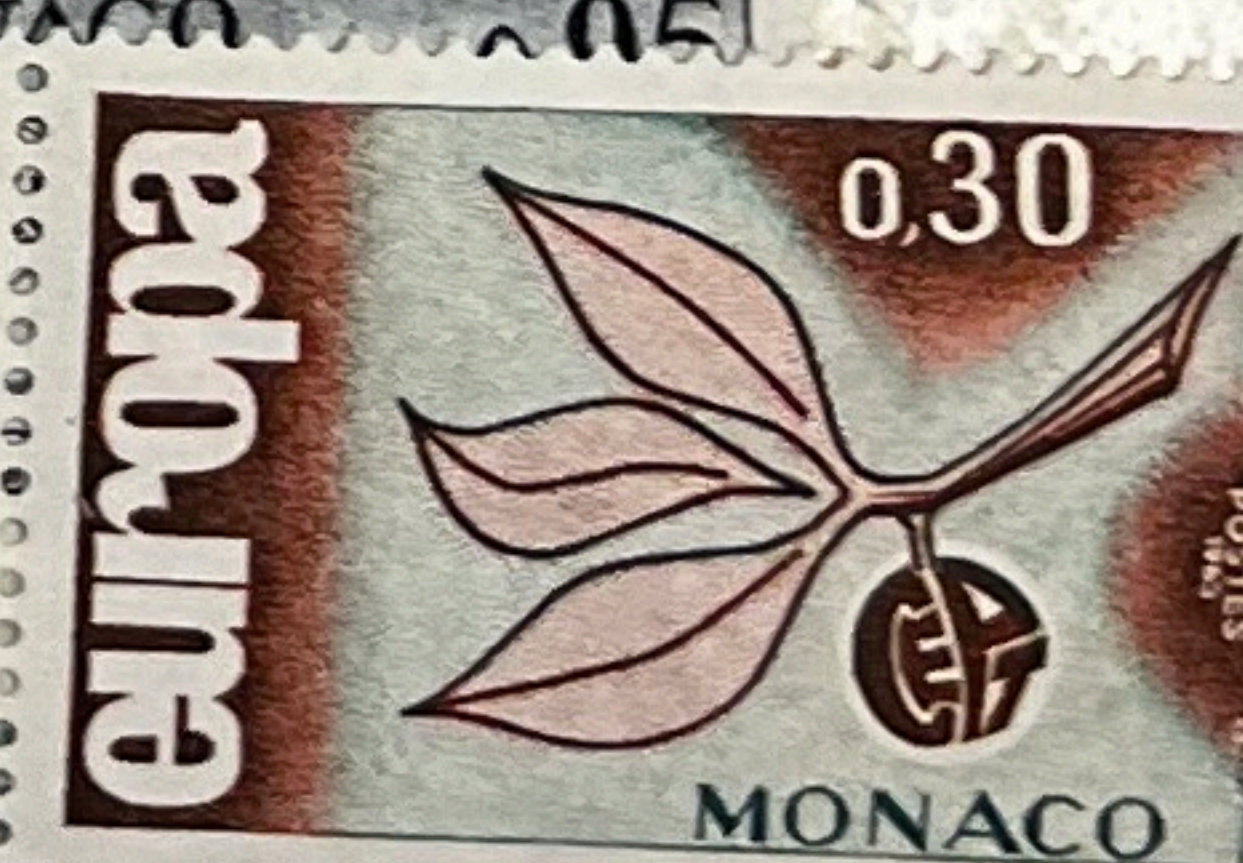


xx MONACO 4/1

1965

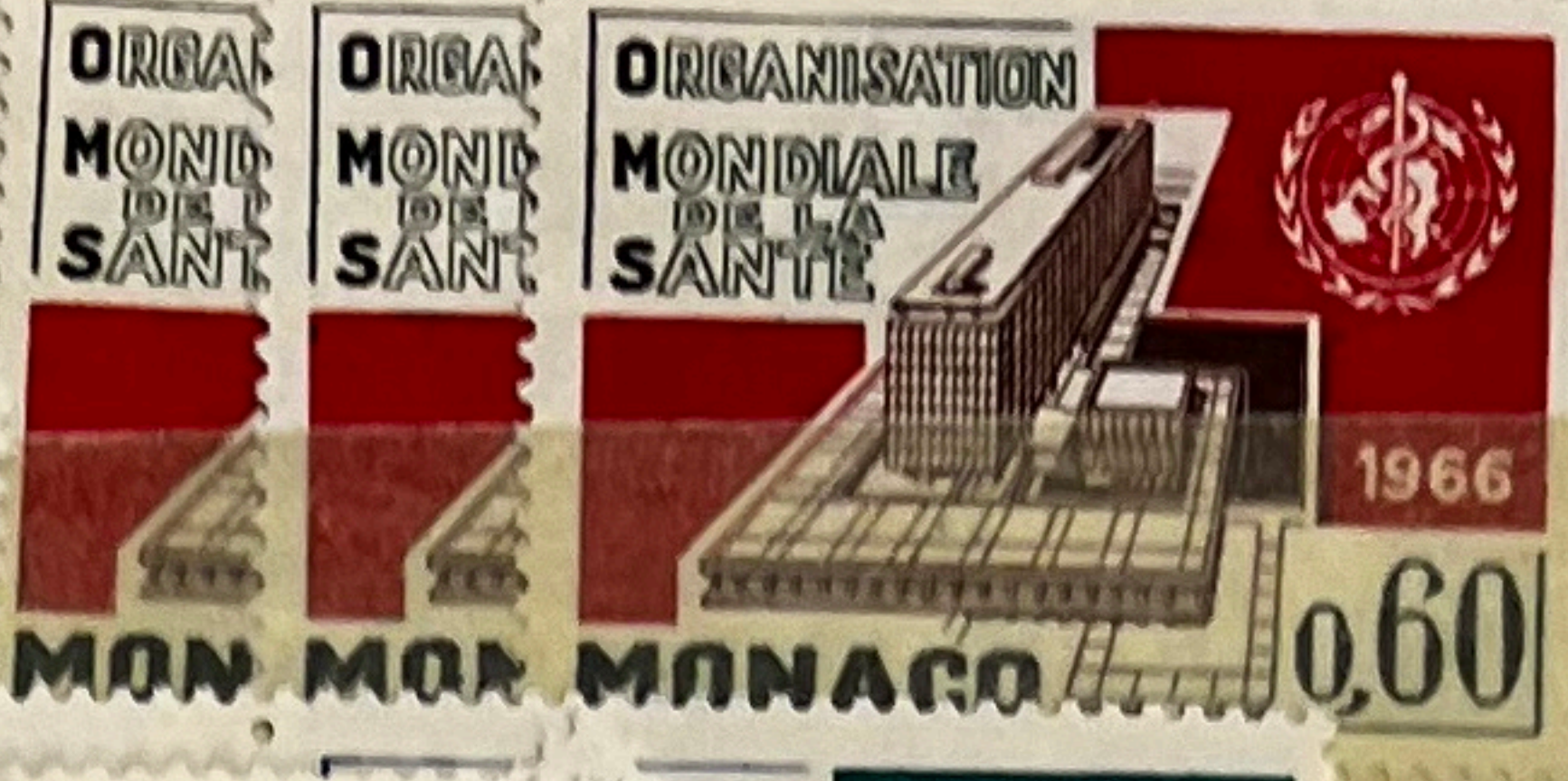


MONACO  
xx



xx MONACO 1/1  
1966  
688 x 1  
691 x 1  
692 x 1  
694 x 1  
695 x 1

33832



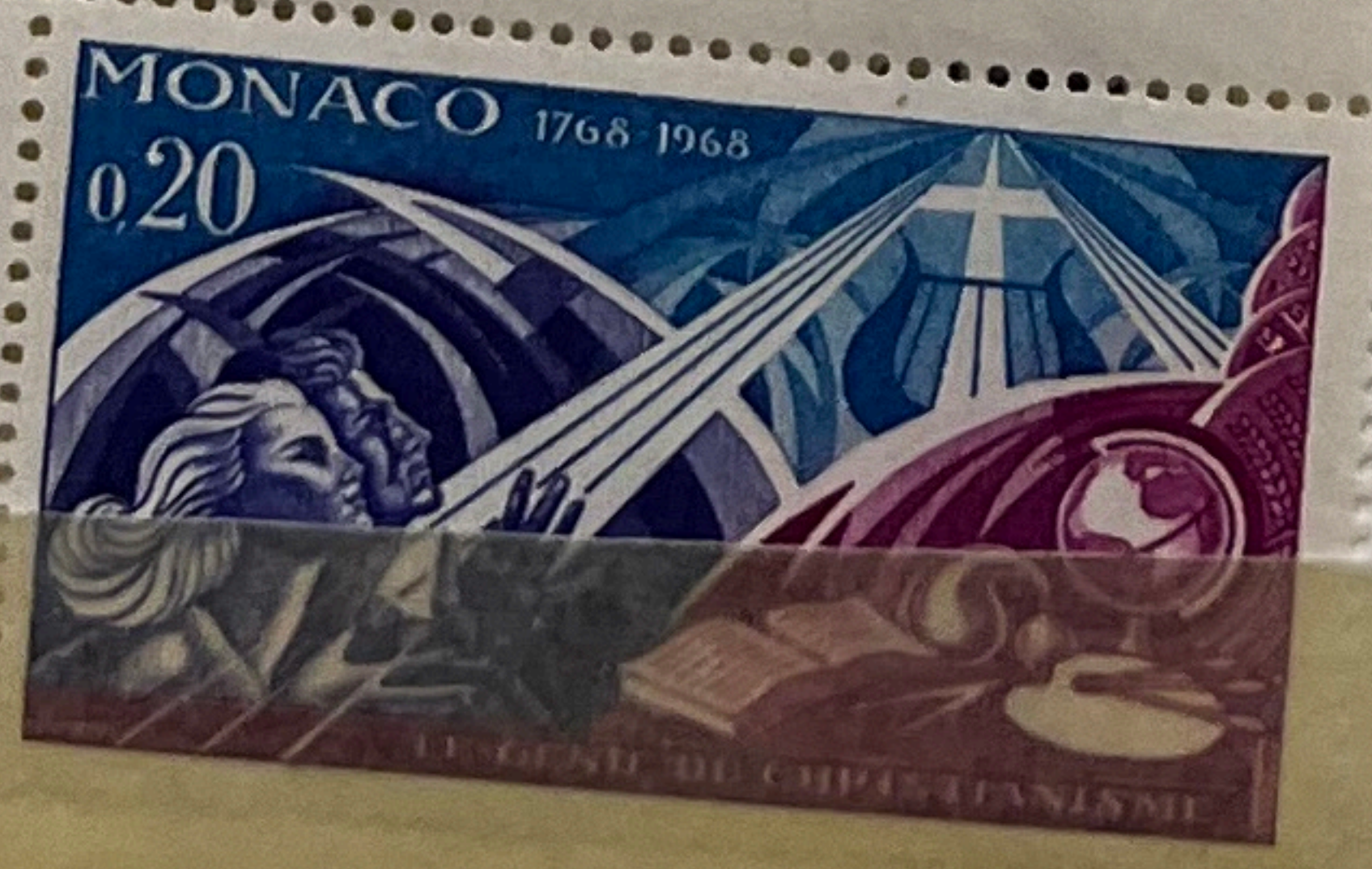
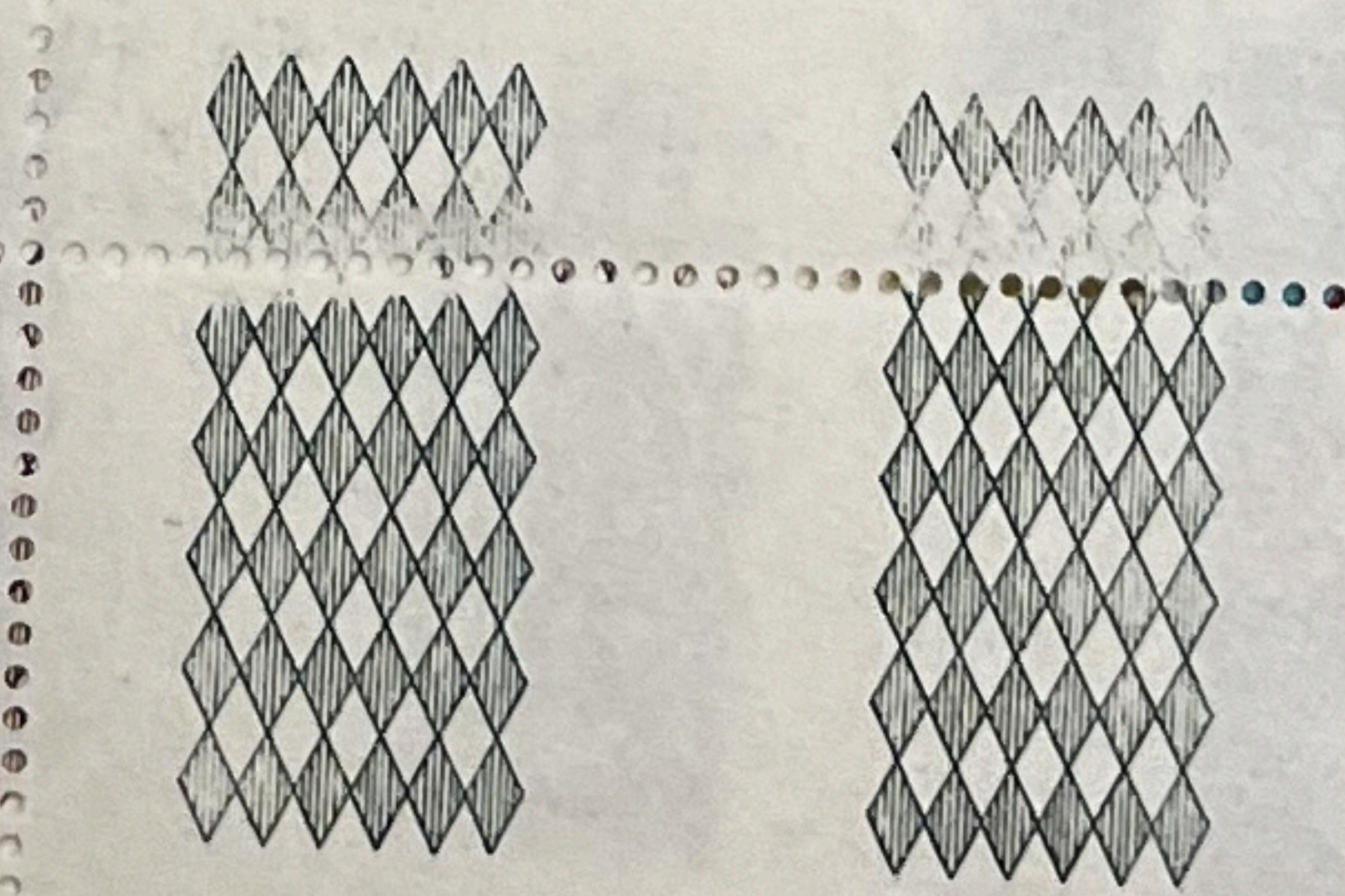
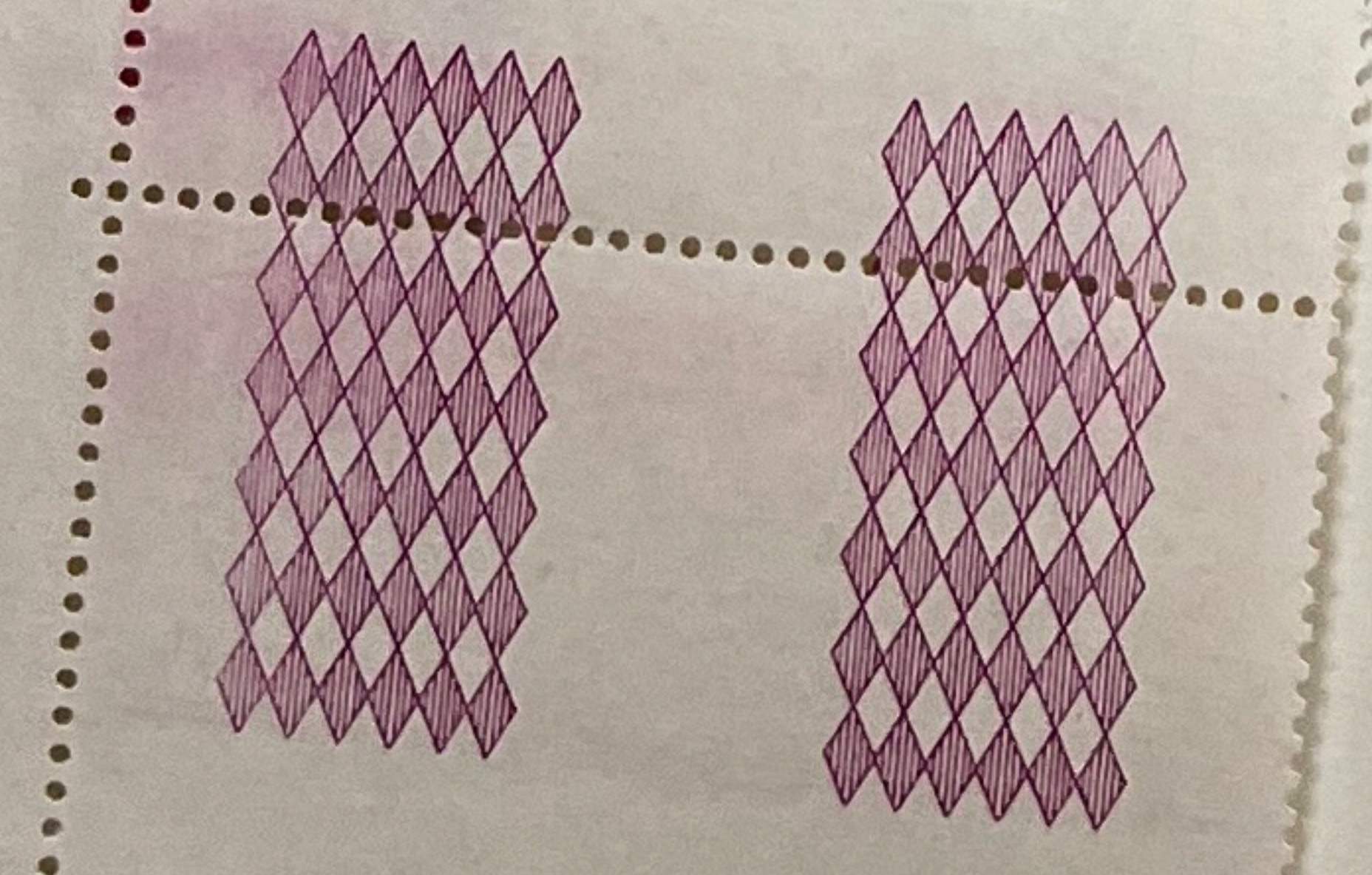
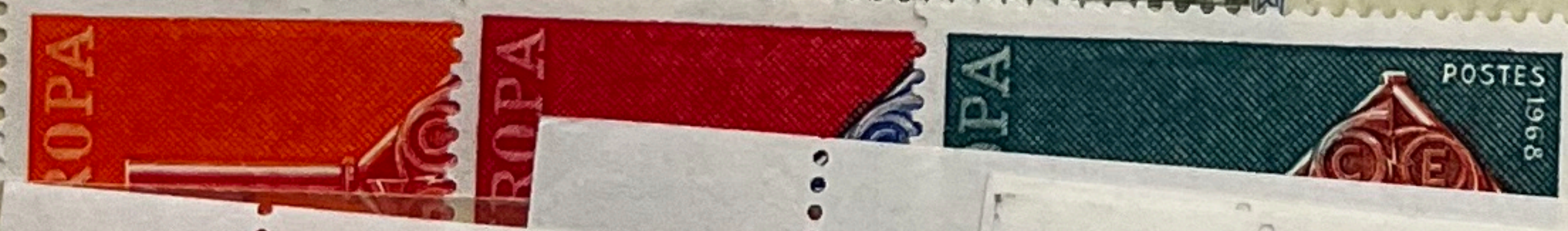
xx MONACO 1/1  
1967

723 x 1  
925 x 1  
726 x 1



1978 1979 1980

MONACO





xx MONACO 4/7  
1968  
752 — 57





Handwritten text on a yellow sticky note, including the name "Lynn" and the date "1984".