

Guatemala.



25 centavos

Hintergrund der Ausgabe

Der damalige Präsident, Manuel Estrada Cabrera, wurde von seiner Mutter, Sra. Joaquina Cabrera de Estrada, gebeten ein Mutterschaftsspital bauen zu lassen. Leider war die Staatskasse wiederum leer aber der Präsident hatte die gute Idee, die RESTBESTAENDE der ungültig gewordenen Wappenserie überdrucken zu lassen. Mit dem Erlös wurde dann einige Jahre nachher das Spital gebaut (siehe die 60c Marke auf der folgenden Seite).

Es handelt sich demnach NICHT um eine AUSHILFSAUSGABE sondern um eine AUFBRAUCHSAUSGABE.

Diese Marken erschienen am 18. April 1903.

Gezeigt werden:

1. Marken einschl. eines kompletten Bogens (Unikat), Specimen und Abarten. Plattierungen.
2. Fälschungen lose und auf Briefen sowie auf einer Karte. Es gibt viele Fälschungen dieses Aufdruckes, meistens zum Schaden der Sammler aber auch die Post wurde wacker betrogen.
3. Frankaturen einschl. Mischfrankaturen, eine seltene Destination sowie Postkarten (letztere sehr selten, aber überfrankiert).



The REMAINDERS of the "National Emblem" issues were overprinted to augment the funds for construction of the "Asilo de Maternidad Joaquina" (maternity hospital), a project of Sra. Joaquina Cabrera de Estrada, the president's mother.

These stamps, therefore, are considered CHARITY stamps and are NOT provisionals as there was neither a shortage or a postal rate of 25 centavos.



In 1919 a 60c stamp appeared depicting this hospital

All 7 values were issued on April 18, 1903.

25c on 1c deep green - 110.000



Pos. 1-3 (2x)

The surcharge setting for all 7 values was 10x2 subjects (2 horizontal rows of 10) impressed 5 times on the sheet of 100 stamps. Type was used to set up a horizontal strip of 10 subjects which was then duplicated and clamped together - hence the SAME FLAWS appear on every row. A further setting of 10x10 or 10x5 seems also to have been used.

Positions 5, 6 and 10 are flawless and not plateable.



- Position 1: There is a knob at the right end of the top bar on "T"
 2: The right end of the top bar of "E" is pointed
 3: The upper curve of "S" is defective
 4: The top bar of "E" is thin
 5: No flaws
 6: No flaws
 7: The "A" is short
 8: There is a nick in the top of the top bar of "E"
 9: The "0" in "1903" has a dent at 7 o'clock
 10: No flaws *

* Also dent in the "2" at 11 o'clock. So far found in position 10 only on 25/1, 25/2, 25/6 and 25/10cent. on every alternate row i.e. on the sheet of the 25/6c in rows 1, 3, 5, 7 and 9 in the last vertical row.

Other flaws exist but are NOT CONSTANT.

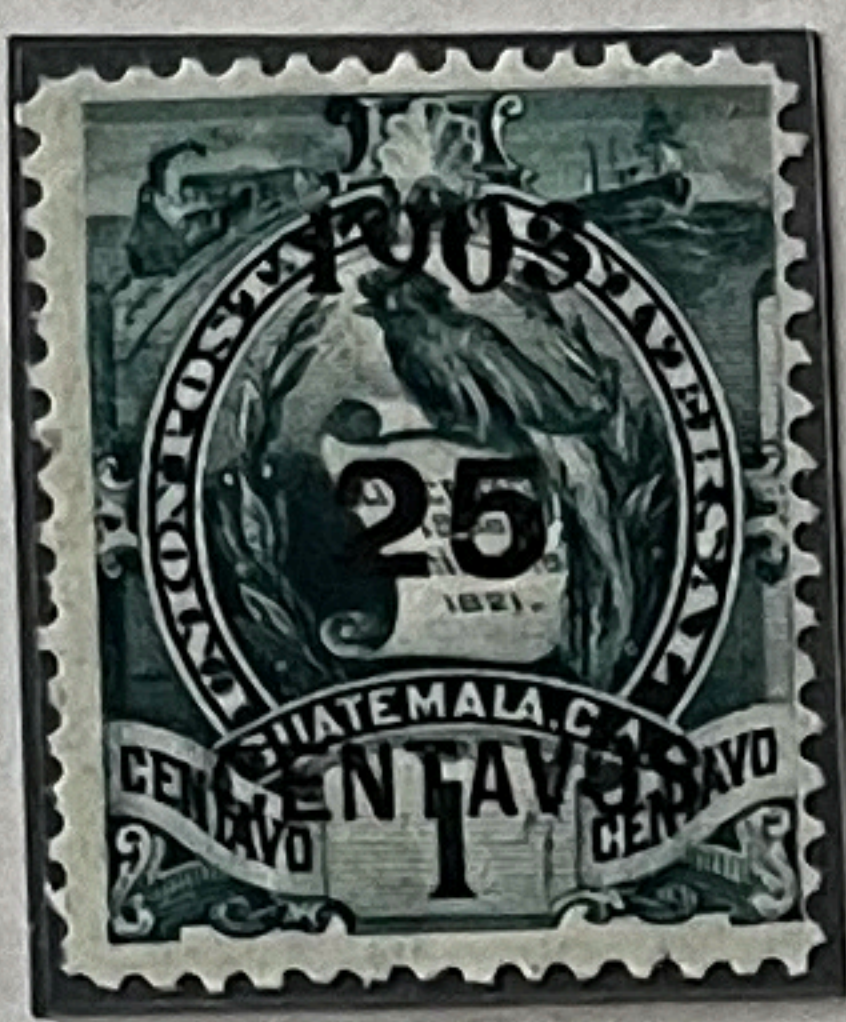
25c on 1c deep green



U.P.U. SPECIMEN
Pos. 2



Pos. 4



Pos. 9



Pos. 10



Pos. 9-10 (2x)



Not plateable
Used blocks are scarce

Varieties



Pos. 4
Surcharge shifted downwards



Surcharge inverted

25c on 2c rose carmine



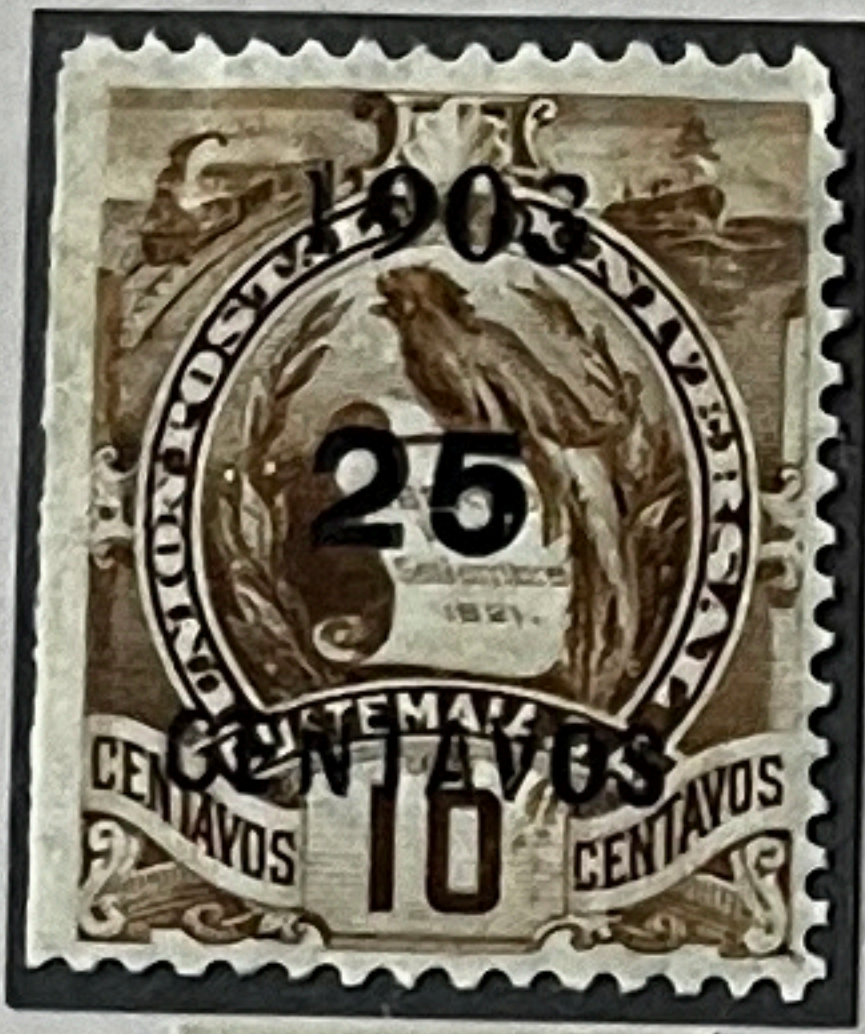
Pos 6-10 (6x)
Largest known multiple of this value



"CENTAVOS" incomplete
(see pos. 8, bottom row
of block of 30).



Pos. 2
U.P.U. SPECIMEN



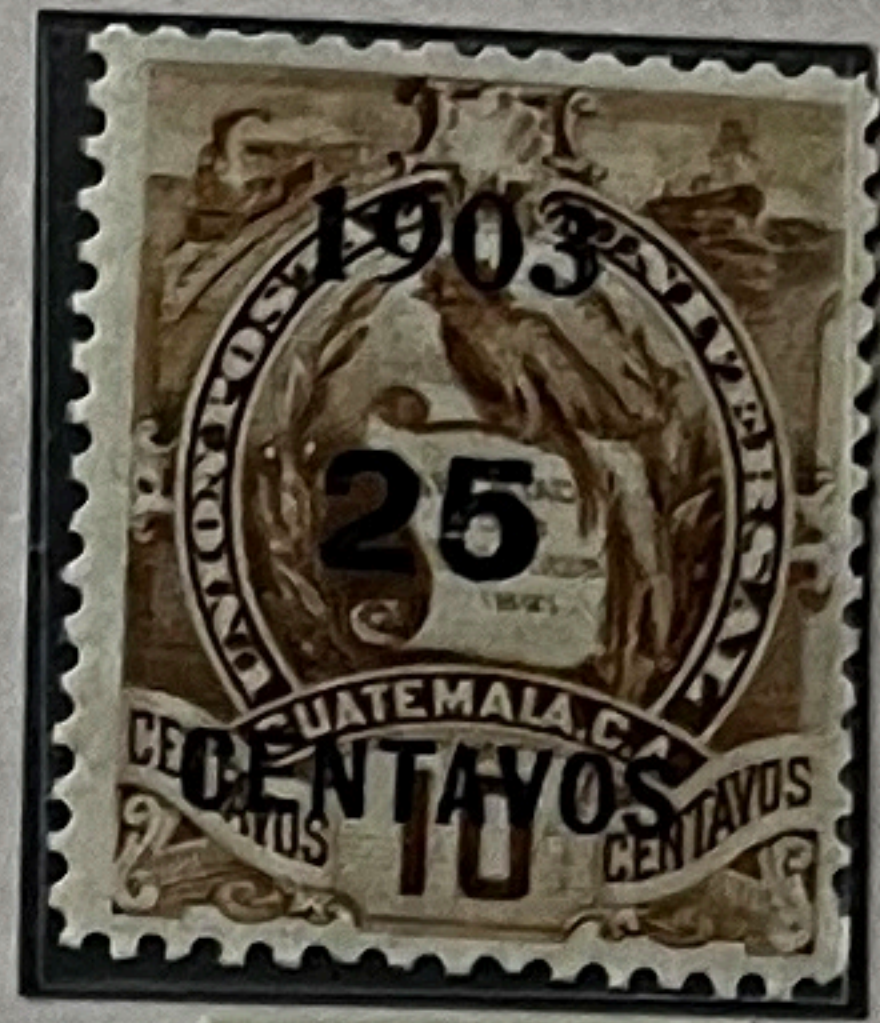
Pos. 1



Pos. 2



Pos. 3



Pos. 7



Pos. 5-6 (2x)



Pos. 8-9 (2x)



Pos. 5-7
used multiples are uncommon

The 1, 2, 6 and 10c are RECESS printed.

25c on 10c brown ochre

Marginal
Bl. of 30

Positions in
sheet of 100



51 - 56

61 - 66

71 - 76

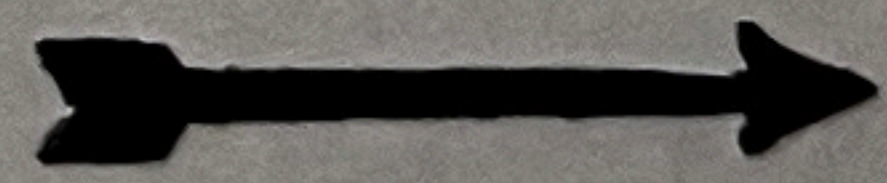
81 - 86

91 - 96

With paper fold in Pos. 81 and 82.

SEE FOLLOWING PAGE for complete sheet of 100 with sheet margin at bottom with printer's name, folded under to fit the page.

Multiples of this value (8,000 issued) are scarce and this is so far the ONLY KNOWN COMPLETE SHEET of this value.

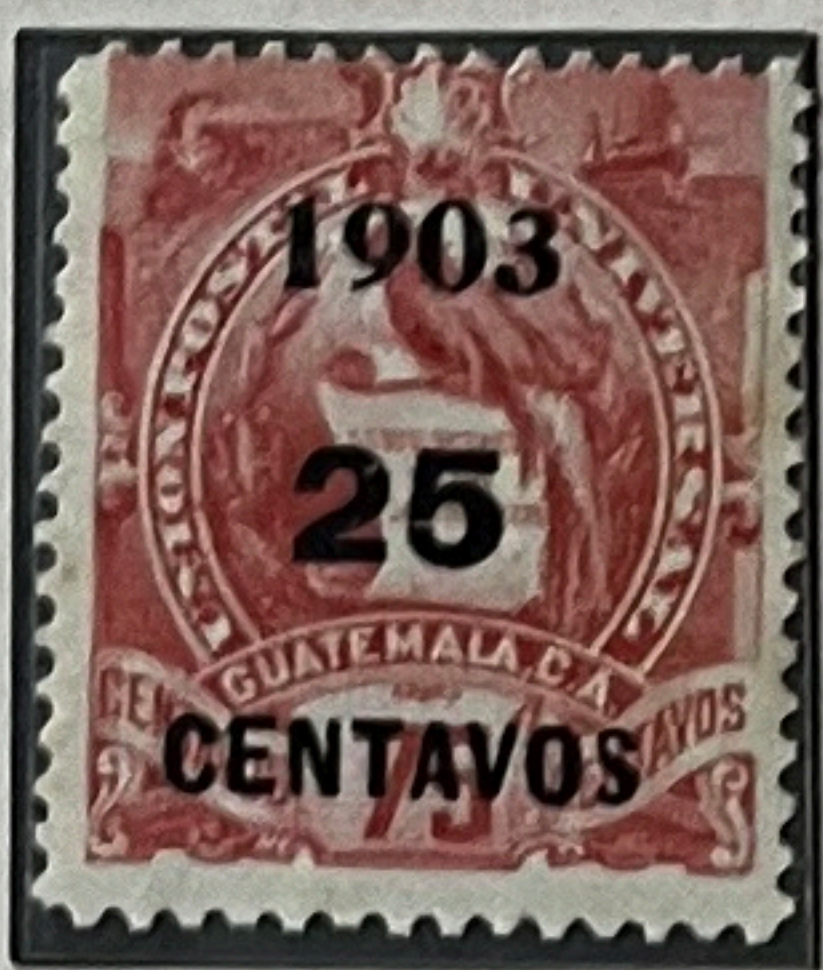




U.P.U. SPECIMEN



Pos. 2



Pos. 3



Pos. 4



Pos. 7



Pos. 8



Pos. 6-7 (2x)



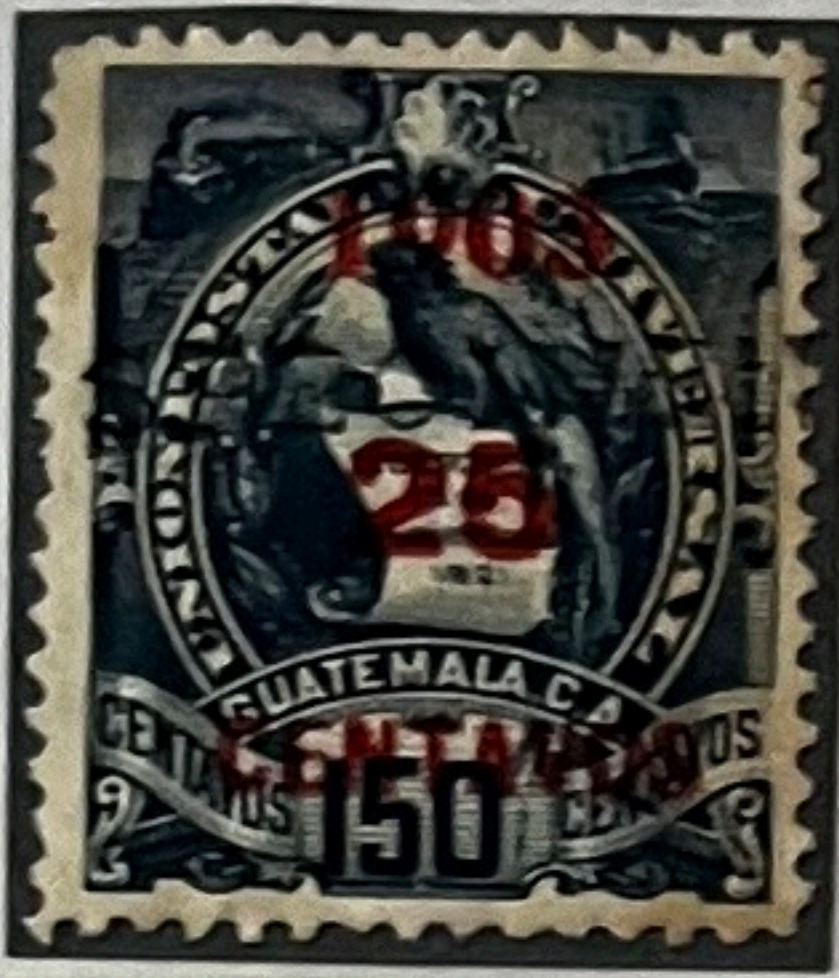
Pos. 9



There are no flaws in the surcharges which points to positions 5, 6 or 10. The 3 stamps represent 3 different positions in the unsurcharged sheet of 100.

Note: Commercial mail of the surcharged high values 75, 150 and 200c is practically non-existent!

25c on 150c dark blue - 6.200



U.P.U. SPECIMEN
Pos.4/74



Pos.1/71



Pos.2/12-3/13
2/22-3/23



Pos.2/92



Pos.3/33



Pos.4/54



Pos.4/84



Pos.6/26



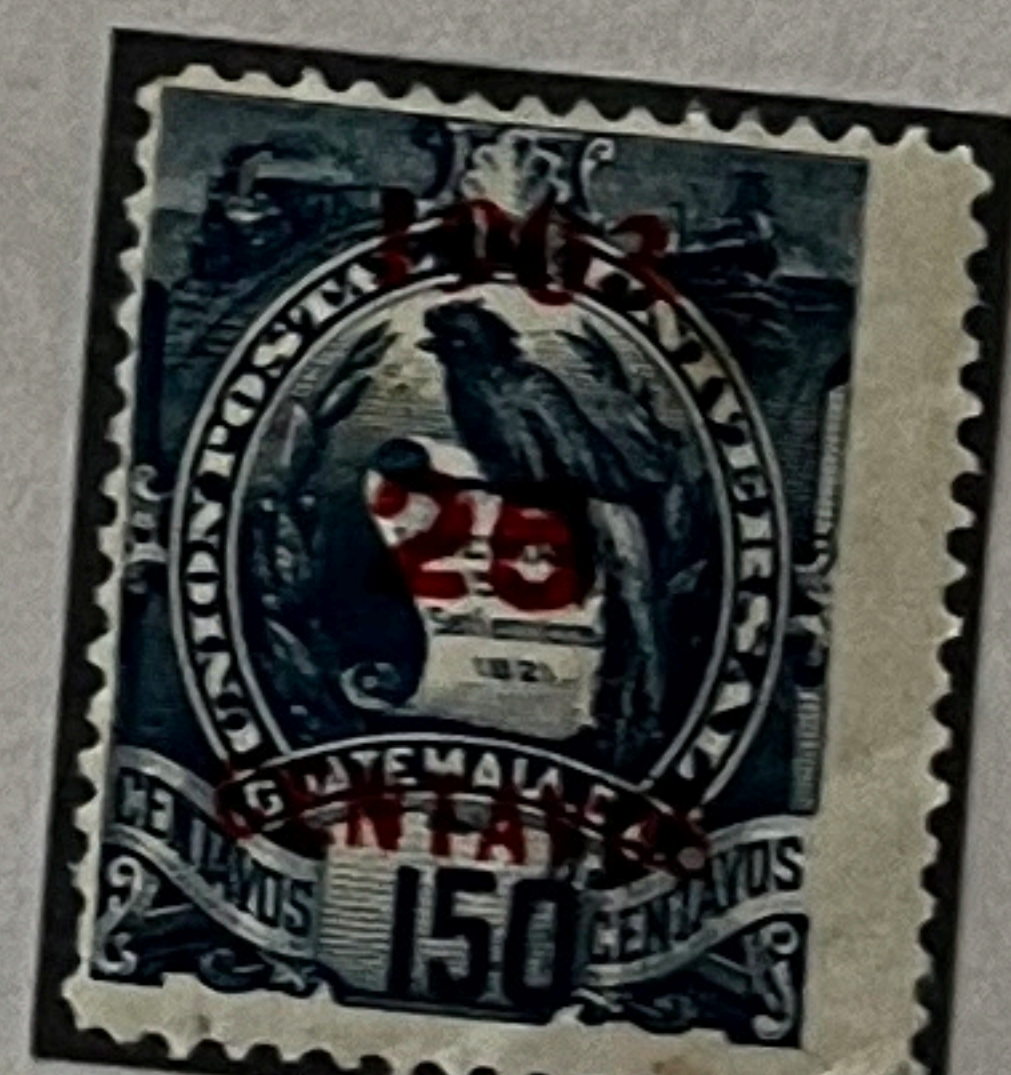
Pos.8/8



Pos.8/48



Pos.8/98



Pos.10/90

The first figure refers to the position of the surcharge, the second to the position in the unsurcharged sheet of 100 stamps.

The BASIC 150 centavos stamps lend themselves to PLATING every position on account of the many lithographic flaws.

25c on 200c orange yellow - 5.700



Pos. 4
U.P.U. SPECIMEN



Pos. 2



Pos. 3



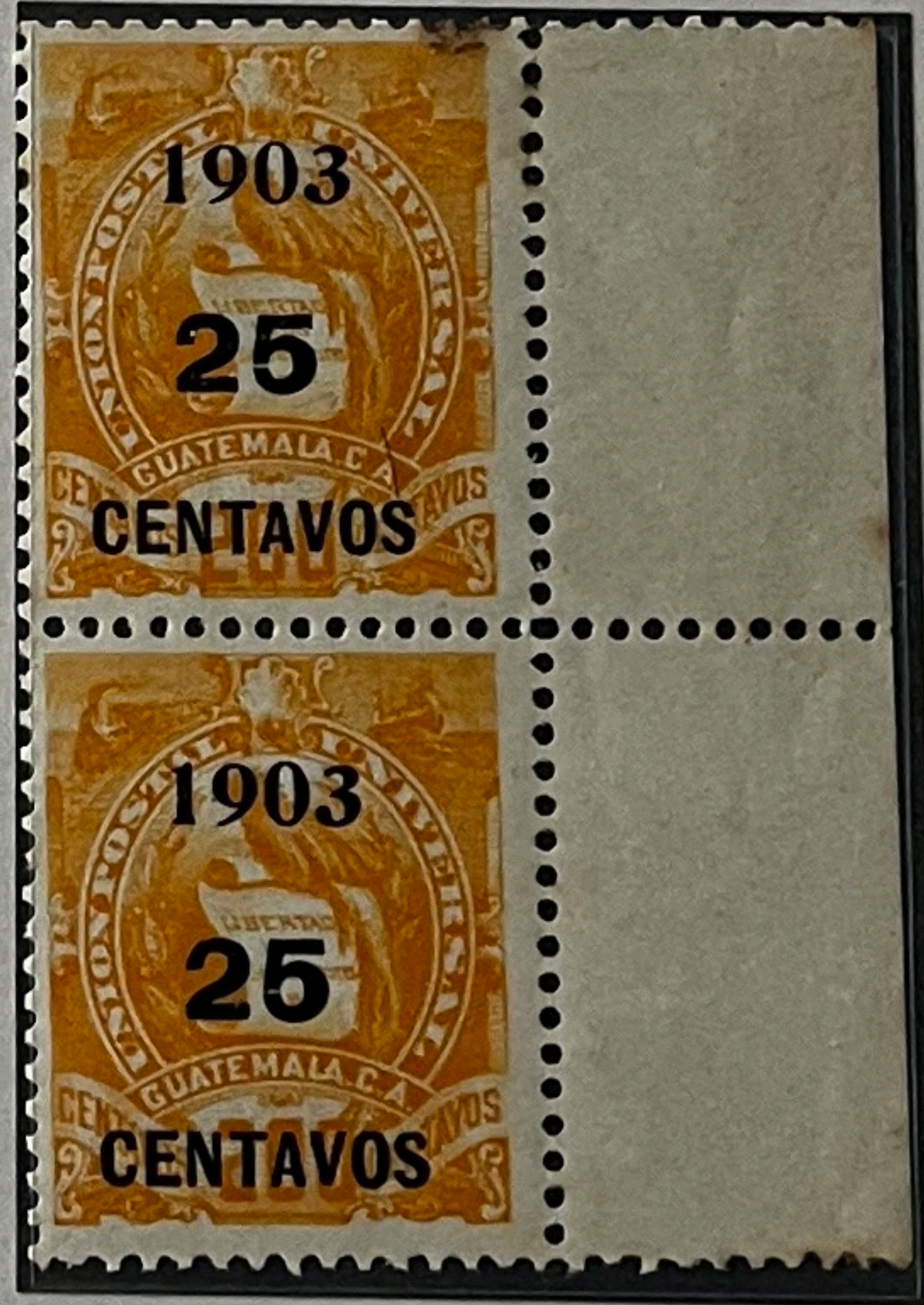
Pos. 4



Pos. 8



Pos 6-7 (2x)

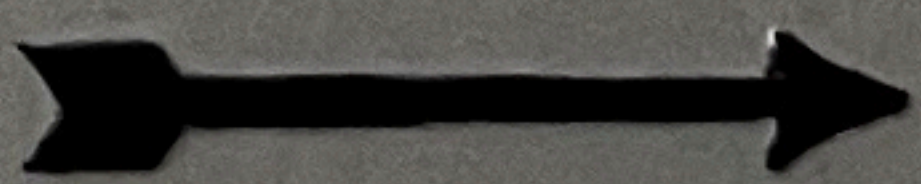


Pos. 10 (2x)

The 75, 150 and 200 centavos are LITHOGRAPHED.
The overprinting was done in Guatemala by the Tipografia Nacional.

The surcharges on the 1, 2, 6 and 10c have been FORGED extensively mainly on used basic stamps. No forgeries of the 75, 150 and 200 centavos are known.

See following pages for forgeries



Plating study of the 3 high values USED

See illustration on page 3

25c on 75c

(6.200)



no flaws
Pos.5,6 or 10



Pos.1



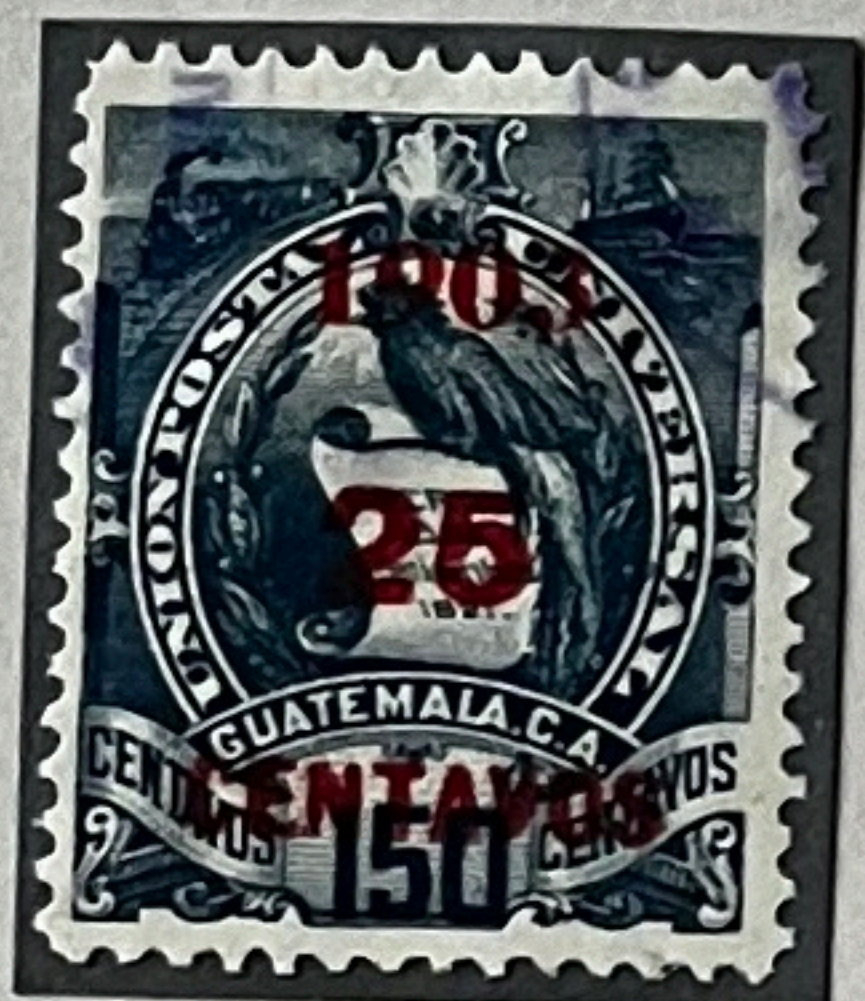
Pos.2



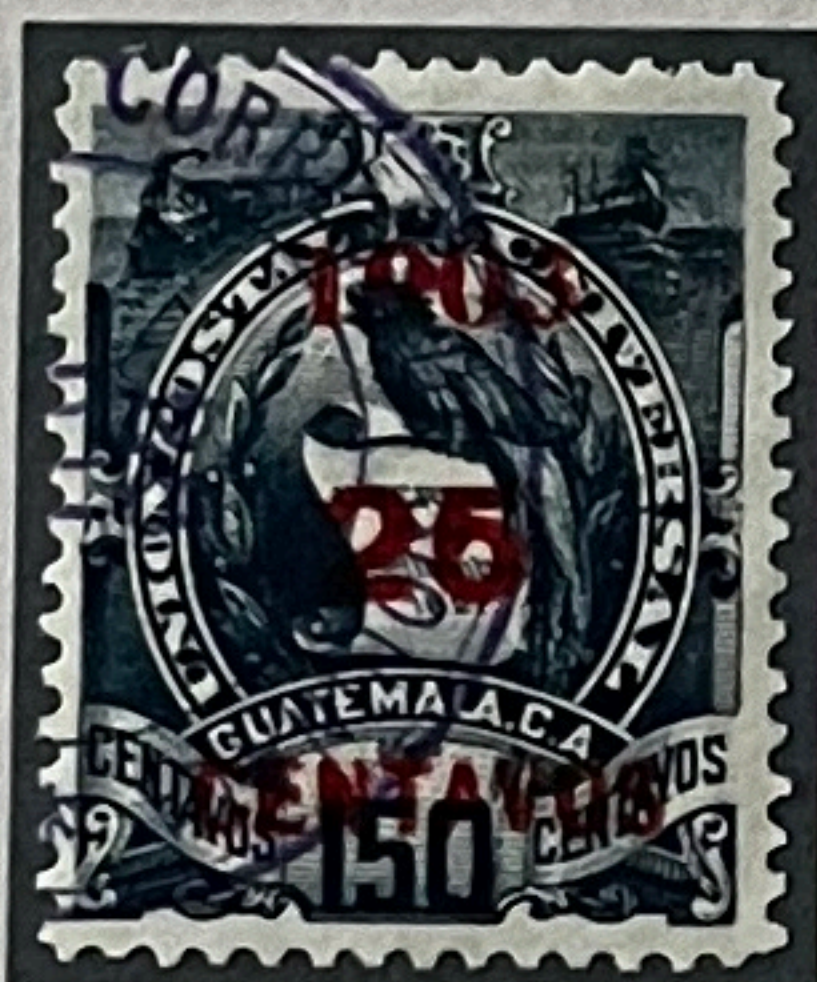
Pos.8

25c on 150c

(6.200)



Pos.2/22



Pos.2/72



Pos.4/34



Pos.6/6

All the stamps in the original unsurcharged sheets of 100 can be plated on account of the many lithographic flaws. The second figure refers to the position in the sheet of 100.

25c on 200c

(5.700)



Pos.2



Pos.3



Pos.4



Pos.7



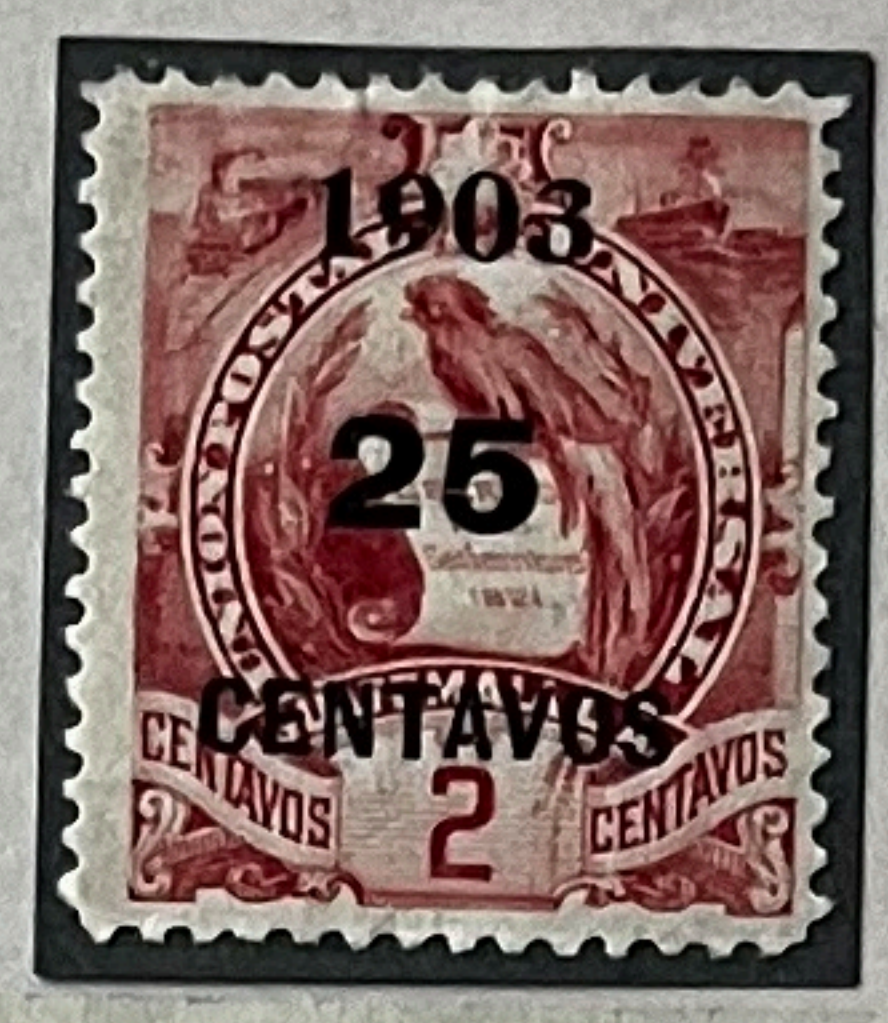
Pos.9

The yellow colour makes plating of the surcharge easy.

The 3 surcharged high values are not found on commercial mail; all the items shown here are "cancelled to order".

Varieties - shifted surcharges

25c on 1, 2, 6, 10 and 200c



Pos. 8 normal



No flaws



Pos 7 & 8 (2x)



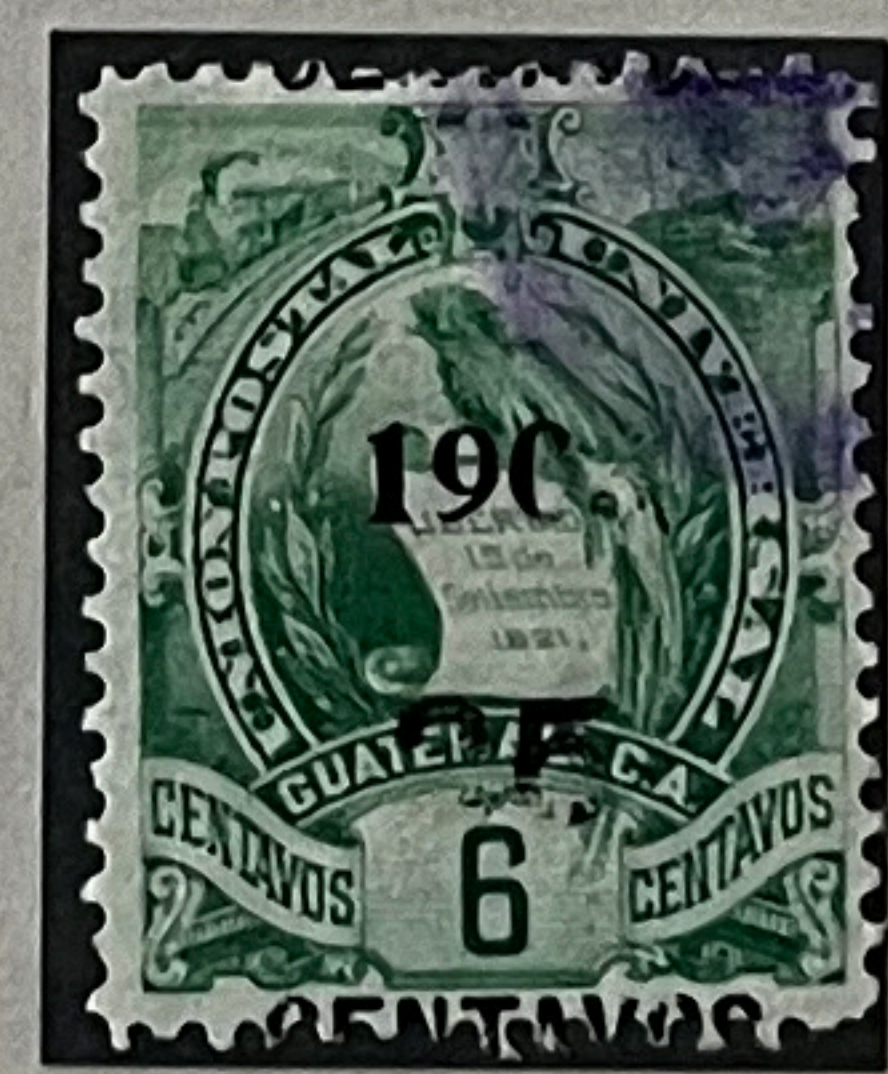
Pos. 9 (3x)



No flaws



Pos. 1



Surcharge incomplete

Shifted surcharges on this issue are not common but they are by no means rare.

Postmarks of the period

a selection on this issue

Bars

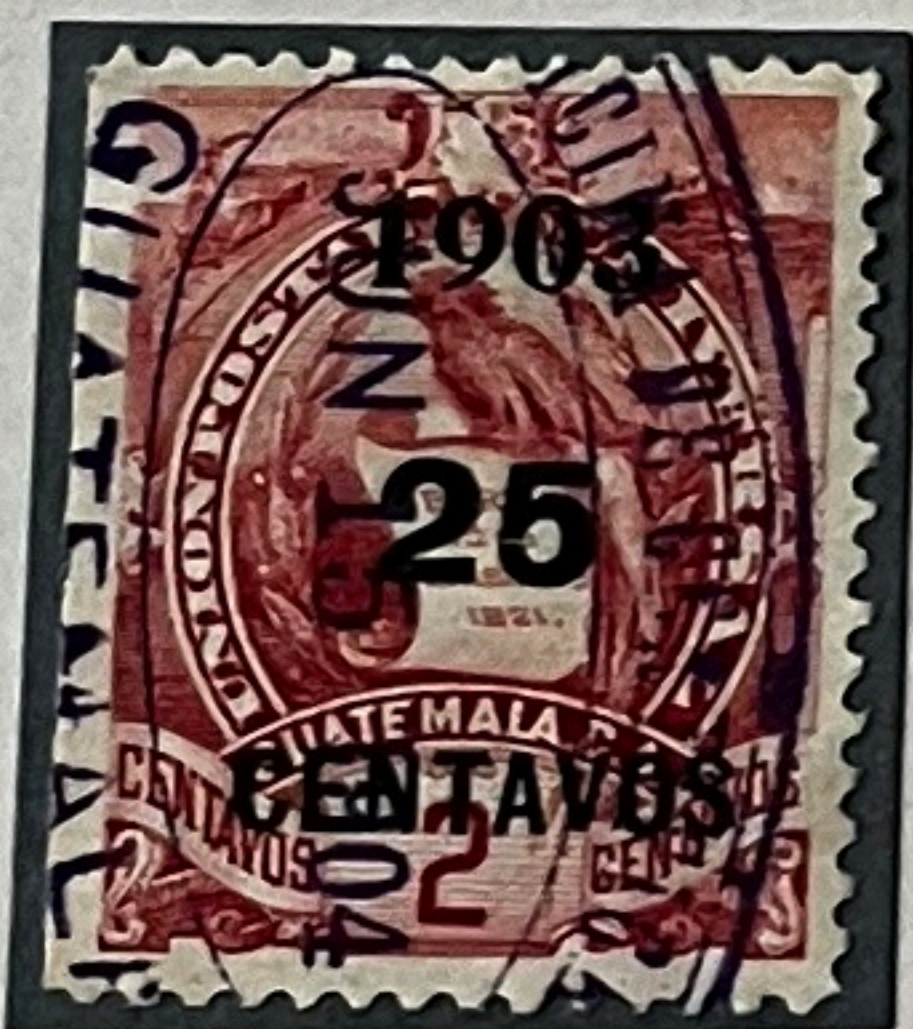


Numerals "1" & "2" in circle



1 NC6 } Red
2 NC7 } 32-9

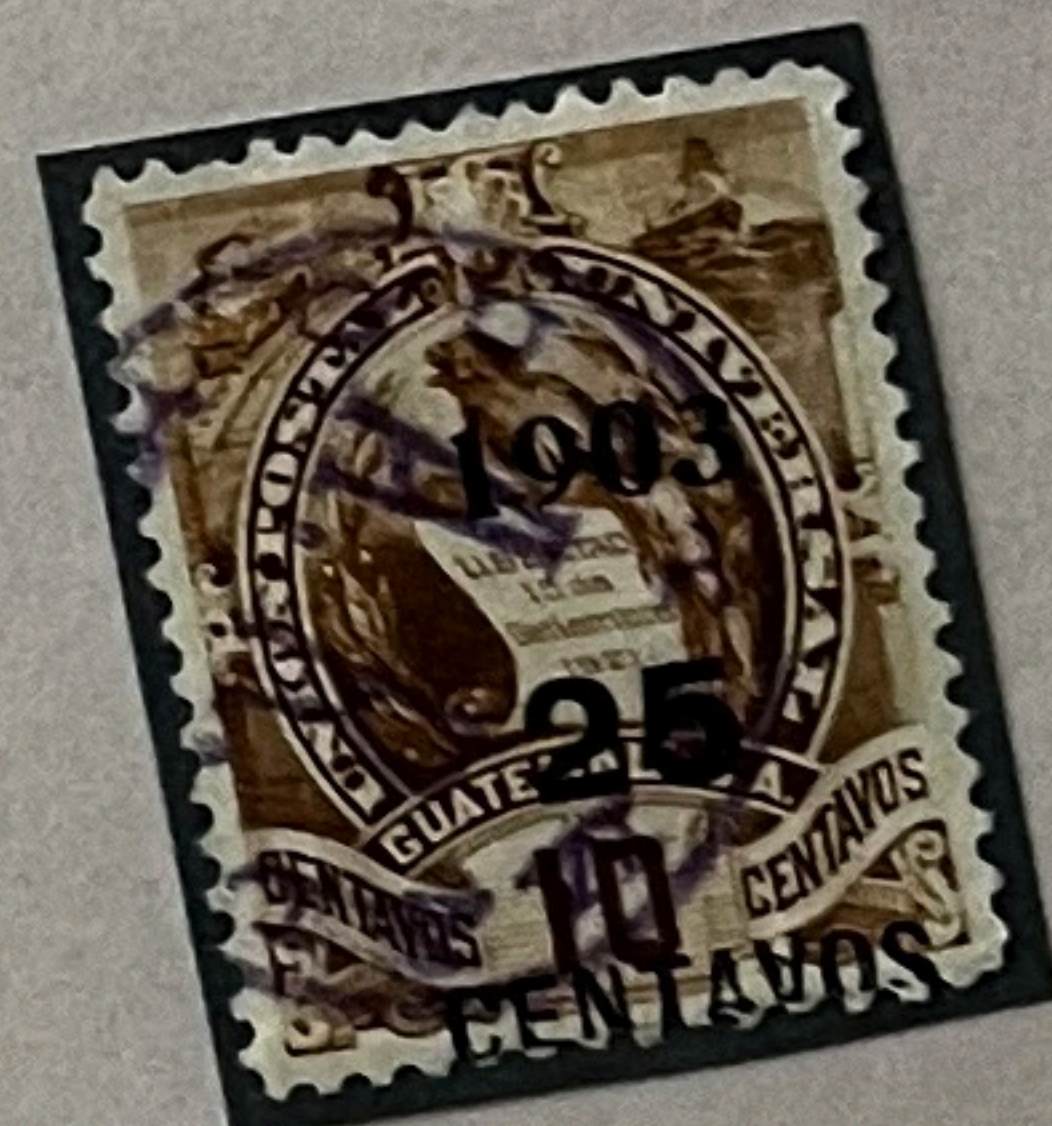
Others



Registration



Curved "AMATITLAN" (scarce!) with forged surcharge!



"A.R." in circle

AMATITLAN
Lined envelope
1902.
Section 30.1

Foreign postmarks



2 different NEW YORK postmarks



As can be seen from the many covers shown, the most common postmarks are: datestamps, the large numerals "1" and "2" in circle and the registration marks on registered mail. Fancy cancels, stars, wedges etc. are seldom found.

25c on 6c emerald green - 31.000



Pos. 9
U.P.U. SPECIMEN



Pos. 1



Pos. 2



Pos. 3



Pos. 4



Pos. 8

Dark emerald green



Pos. 9-10 (2x)

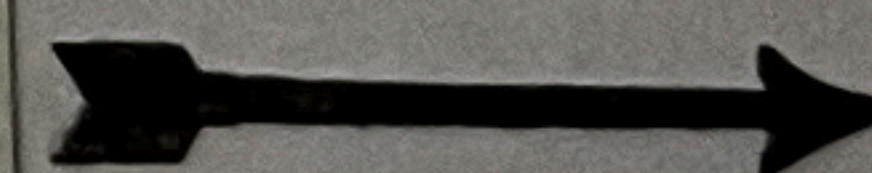
Light emerald green



Pos. 9-10 (2x)
with straight edge

The 1,2 and 6c were printed in sheets of BOTH 100 and 200 stamps.
(latter on 2 plates side by side). The 200 unit sheets were cut
down the middle - hence the straight edges at left or right.

On the next page is a COMPLETE SHEET of 100 in the dark emerald shade.



The ONLY SURVIVING sheet of all the 7 values!





U.P.U. SPECIMEN
Pos. 9

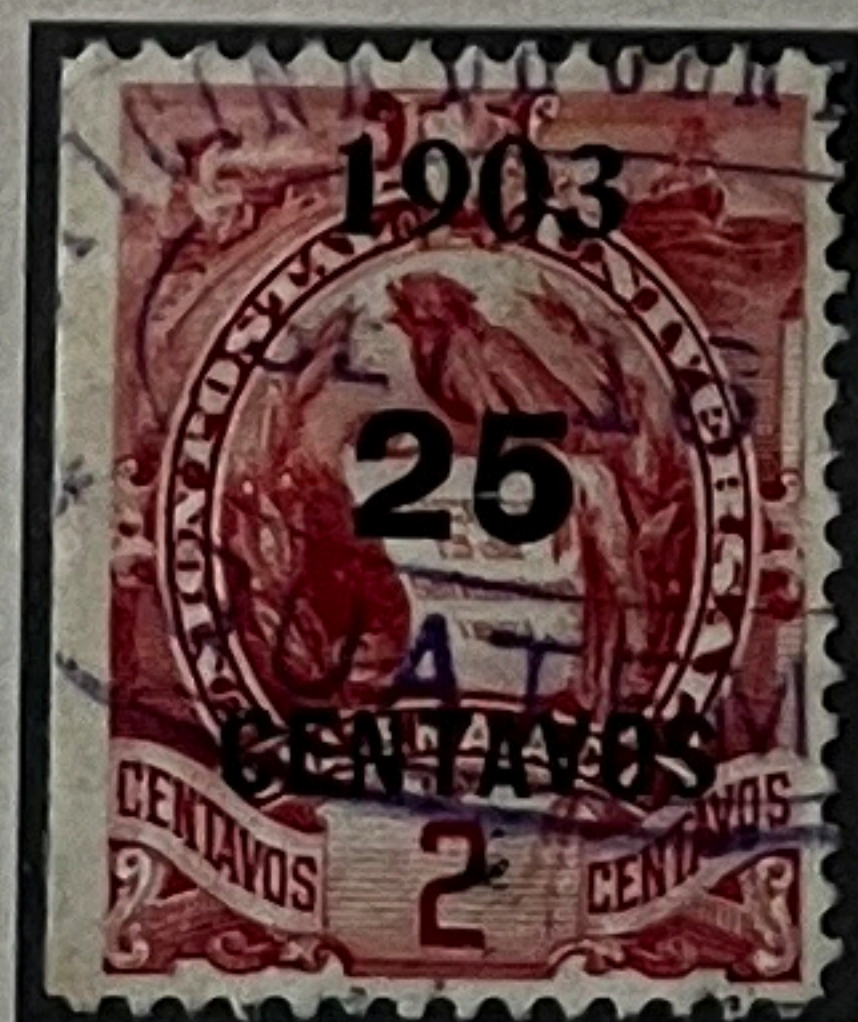
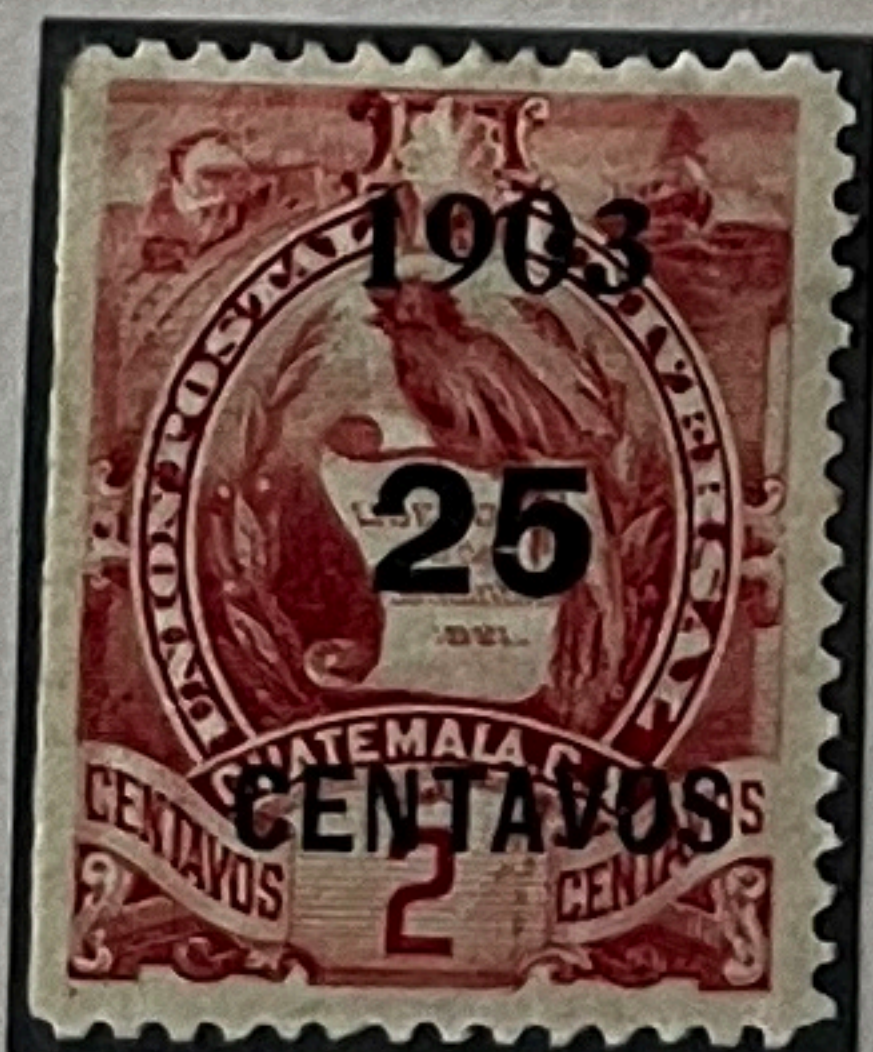


Possibly Pos. 5-6 (2x)

Pos. 7-8 (2x)

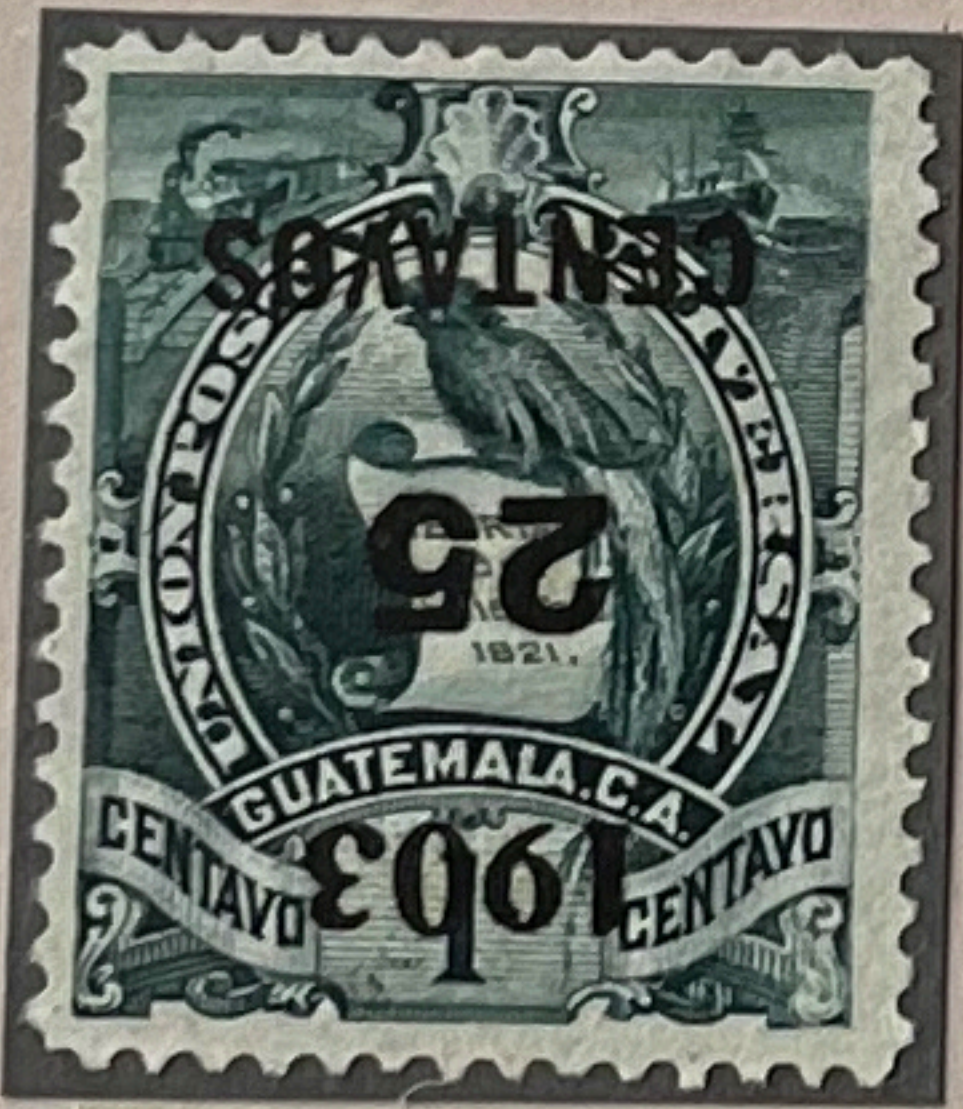


Pos. 1-4 (2x)



Pos. 1 with straight edges
(from right pane of 100 stamps)

Forged surcharges - the 1, 6 and 10c surcharge (in mm)
 Measurements of the 1c surcharge (in mm)
 Vertical height: 19.8 / Length: 15.3



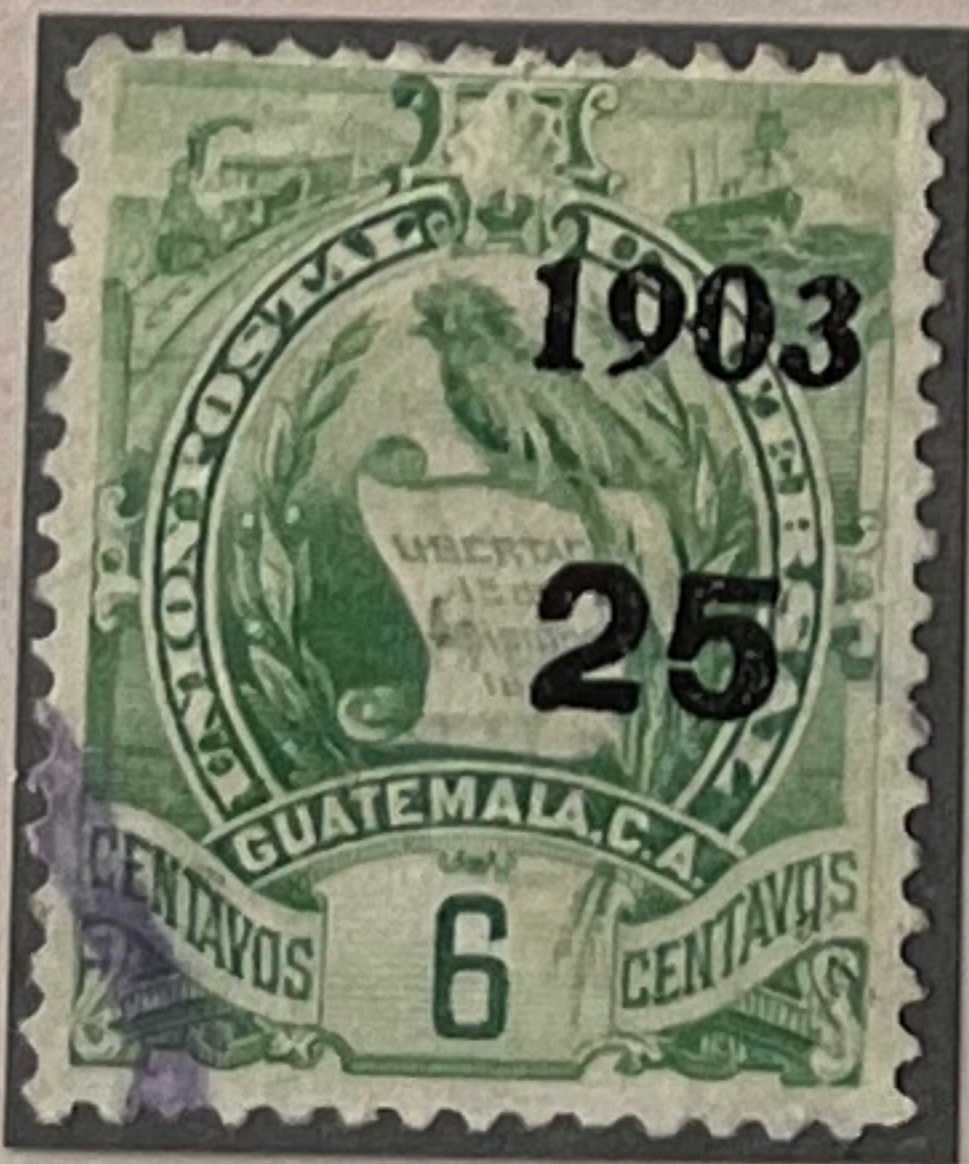
Inverted
 H. 20.3
 Cent.15.5



Sideways
 H. 19.8
 Cent.15.0



Normal
 H. 19.3
 Cent.15.4



Missing cent.
 H. 19.8



Inverted
 H. 19.3
 Cent.15.3



Inverted
 H. 19.3
 Cent.15.5