

MANUEL EYRES CIRCULAR
DELIVERY COMPANY LTD.

A COLLECTION OF BOTH IMPERFORATE AND PERFORATED STAMPS OF THE 3RD FORGERIES, CIRCA 1885, A LARGE NUMBER OF THEM "PLATED" FROM OVERLAPPING PAIRS, STRIPS ETC. AND WITH SOME SHADES.

ALTHOUGH OTHER TRANSFER DIFFERENCES CAN BE FOUND THE SIMPLEST METHOD OF IDENTIFICATION OF ANY STAMPS POSITION, IN THE HORIZONTAL STRIPS OF NINE FOR EACH VALUE AND TOWN, IS BY COMPARING DAMAGE TO THE VALUE TABLET AND INSCRIPTION. THIS IS ALWAYS DIFFERENT ON EACH STAMP, IN MANY CASES SIGNIFICANTLY, BUT SIZE OF LETTERS, THEIR POSITION OR DAMAGE TO THEM AND THE TABLET WILL ALWAYS SHOW SOME DIFFERENCES.

INSUFFICIENT BLOCKS OR STRIPS WERE AVAILABLE TO IDENTIFY ALL STAMPS BUT OVER 70% ARE PLATED AND WILL BE MOST USEFUL TOWARDS A COMPLETED STUDY OF THESE STAMPS.

{	TOTAL STAMPS	=	231	}
	" PERFORATED	=	53	
	" "PLATED"	=	161	

BIRMINGHAM



1

2



2

3

3

1

2



3

6

7

8

4



1

2

6

7

8

9



2

BIRMINGHAM (Perf)



1



7



9



9



3



5



9



2



3



4

Ed

Ed

DUNDEE



EDINBURGH & LEITH



1



2



4



5



1



2



3



1



2



2



7

GLASGOW



7

8



6

7

8

1

2



3

4

5



7



LIVERPOOL



5



2



3



7



2



3



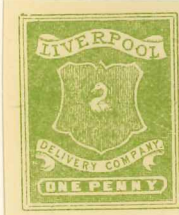
4



5



9



1



2



1



2



3



4



6



7



2



9



8



5



6



7

NO. 157
Copyright 1950

Ed

W

LIVERPOOL (Perf)



8



3



4



5



1



7



8



9

LONDON



8

9



3



6



7



8



9



MANCHESTER



3



1



2



4



1



4



5



6



2



7



3



8



1



3



1



9



9



METROPOLITAN



4



4



5



6



1



2



3



8



9



1



1



2



3



4



5



6



1



7



8



9



2



3

METROPOLITAN (Perf)



2



3



4



1



7



1



7