

FALKLAND ISLANDS DEPENDENCIES

South Georgia

1944/45



1944



black & brown



1945



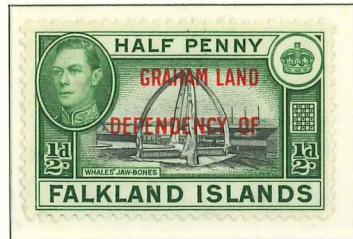
blue-black & brown



FALKLAND ISLANDS DEPENDENCIES

Graham Land

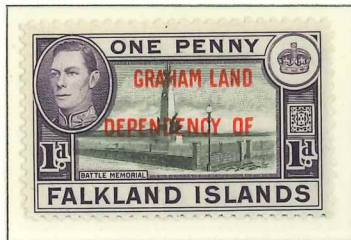
1944/45



black & green



blue-black & green



1944



black & brown



1945



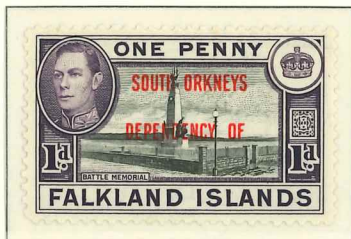
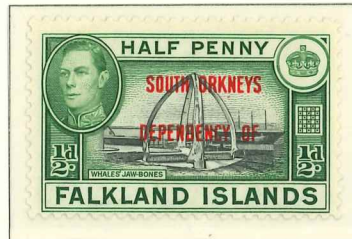
blue-black & brown



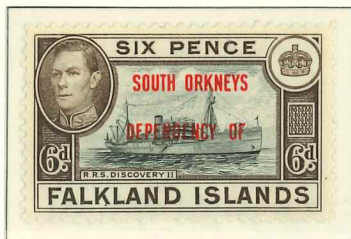
FALKLAND ISLANDS DEPENDENCIES

South Orkneys

1944/45



1944



black & brown



1945



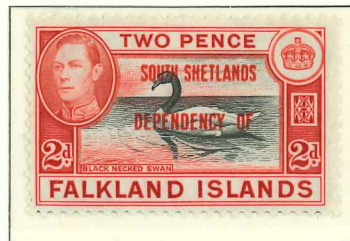
blue-black & brown



FALKLAND ISLANDS DEPENDENCIES

South Shetlands

1944/45



1944



black & brown



1945



blue-black & brown

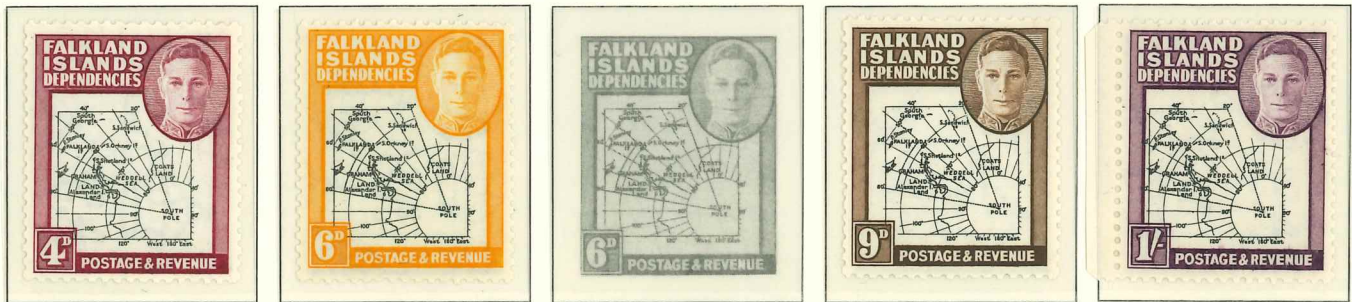
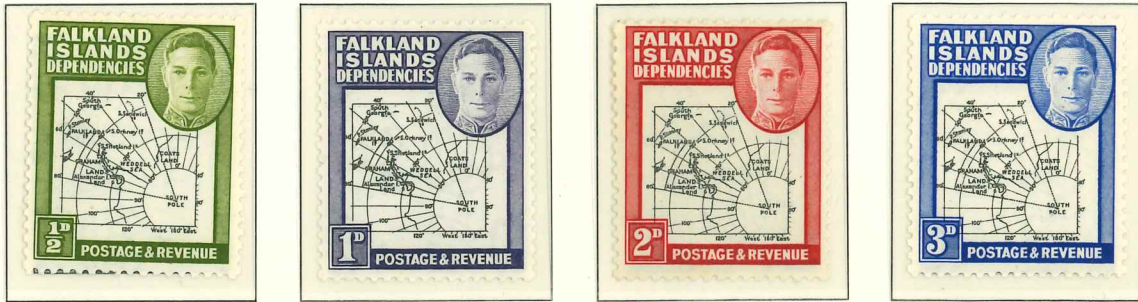


FALKLAND ISLANDS DEPENDENCIES

From 1 February 1946 to 16 July 1963
 Graham Land, South Georgia, South Orkneys and South Shetlands
 used FALKLAND ISLANDS DEPENDENCIES stamps.

1946

1st Issue: Map thick and coarse



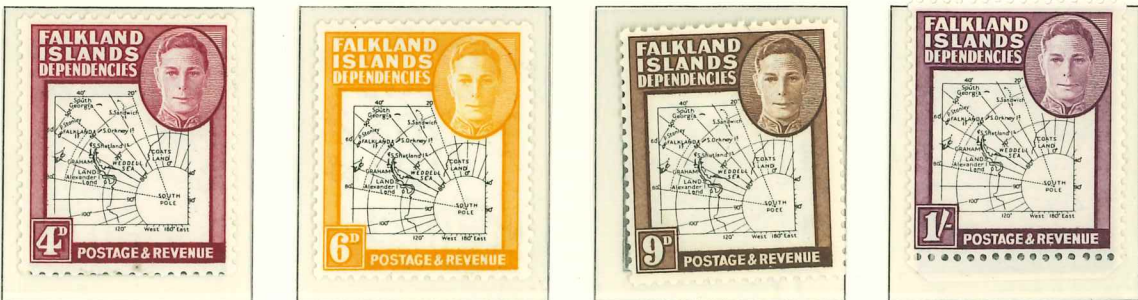
black & orange

black & ochre

1948/49

2nd Issue: Map thin and clear

1949



FALKLAND ISLANDS DEPENDENCIES

1946



1948



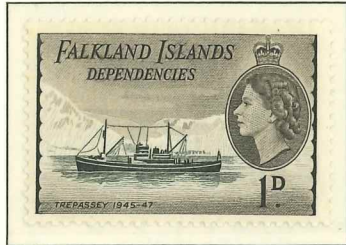
1949



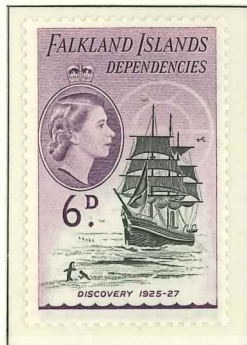
FALKLAND ISLANDS DEPENDENCIES

Definitive series

1954



1954



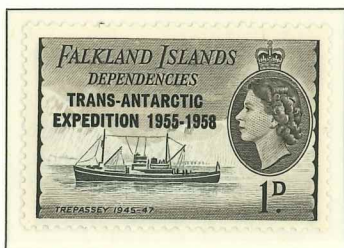
FALKLAND ISLANDS DEPENDENCIES

Queen Elizabeth II

1953



1956



The stamps of Falkland Islands Dependencies were withdrawn on 16 July 1963 after Graham Land, South Orkneys and South Shetlands had become a separate colony, BRITISH ANTARCTIC TERRITORY.

FALKLAND ISLANDS DEPENDENCIES

From 17 July 1963 to 4 May 1980 South Georgia and South Sandwich Islands used SOUTH GEORGIA stamps.

Definitive series — 1963/70 — Wmk. Multiple St. Edward's Crown Block CA

1963 — Perf. 15 - Ordinary paper



Wmk. upright

1967 — Perf. 14 x 15 - Ordinary paper



1970 — Perf. 15 - Glazed paper



Wmk. sideways



FALKLAND ISLANDS DEPENDENCIES

Decimal currency

Definitive series

1971

Wmk. upright
Multiple St. Edward's Crown Block CA



Wmk. sideways - Glazed paper



Ordinary paper
(unless otherwise stated)



FALKLAND ISLANDS DEPENDENCIES

Decimal currency

Definitive series

1972/76

1972

Surcharge Type II
Wmk. sideways - Glazed paper



1973

Surcharge Type III
Wmk. upright - Glazed paper



1972

Glazed paper - Wmk. upright



1976

Glazed paper - Wmk. sideways



1973

Surcharge Type II
Glazed paper



1972

Surcharge Type II
Glazed paper - Wmk. upright



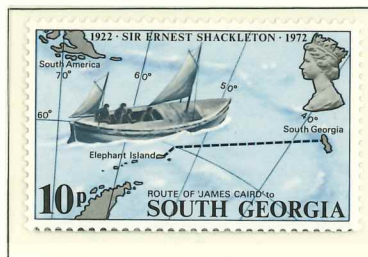
1976

Surcharge Type II
Glazed paper - Wmk. sideways



FALKLAND ISLANDS DEPENDENCIES

1972



1973

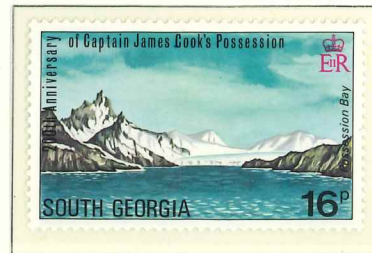


FALKLAND ISLANDS DEPENDENCIES

1974

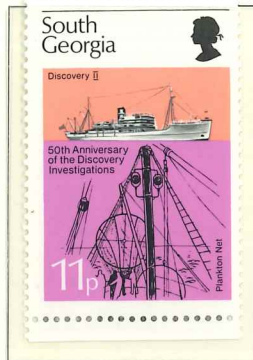
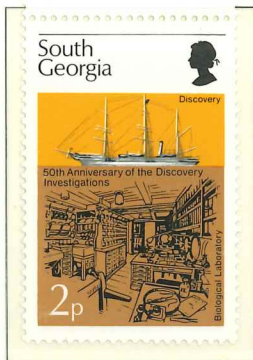


1975



FALKLAND ISLANDS DEPENDENCIES

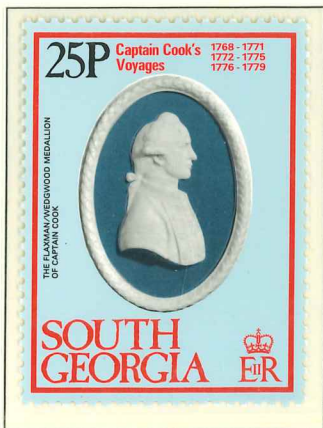
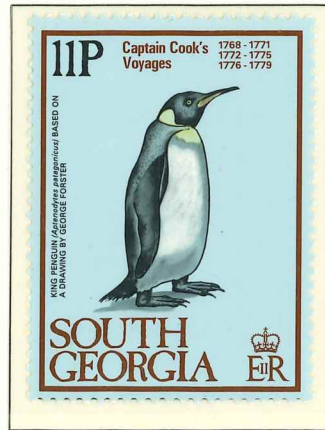
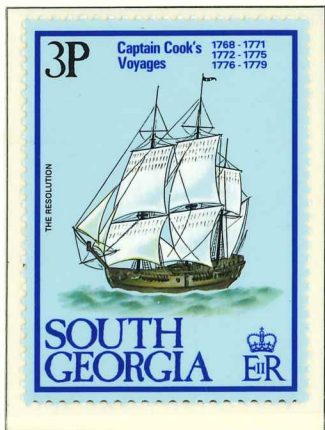
1976



1977



1979



FALKLAND ISLANDS DEPENDENCIES

1978



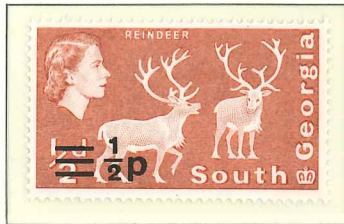
FALKLAND ISLANDS DEPENDENCIES

Definitive series

1977/78

Wmk. Multiple Crown CA Diagonal

Glazed paper



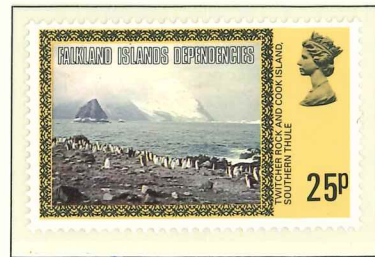
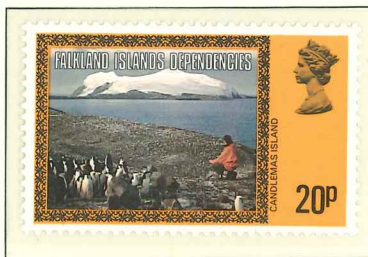
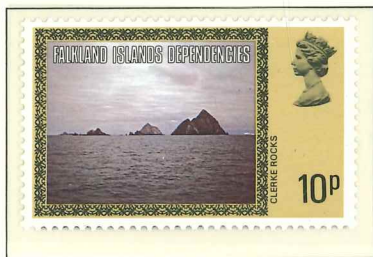
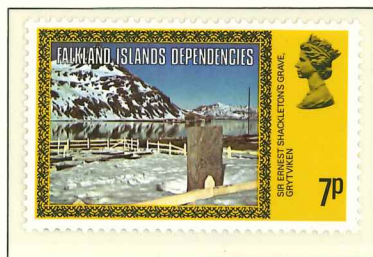
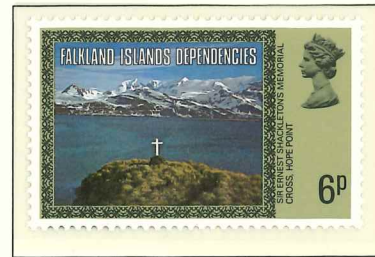
1978



FALKLAND ISLANDS DEPENDENCIES

From 5 May 1980 to 1985
the stamps for South Georgia and the South Sandwich Islands
have the inscription
FALKLAND ISLANDS DEPENDENCIES

Definitive series — 1980 — Without imprint date

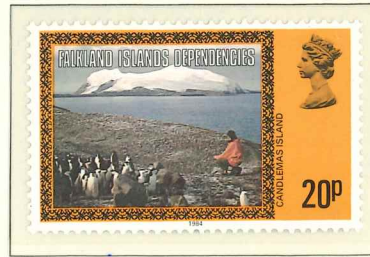
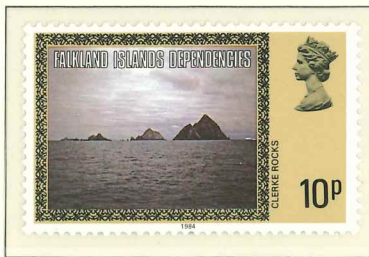


FALKLAND ISLANDS DEPENDENCIES

Definitive series

1984

With imprint date "1984"

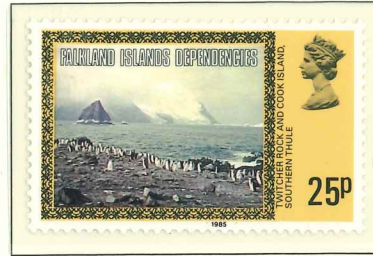


FALKLAND ISLANDS DEPENDENCIES

Definitive series

1985

With imprint date "1985"



FALKLAND ISLANDS DEPENDENCIES

1981



FALKLAND ISLANDS DEPENDENCIES

1982



FALKLAND ISLANDS DEPENDENCIES

1982

Perf. 13 1/2 x 14



Perf. 13 1/2



Semi-Postal Stamp



1983

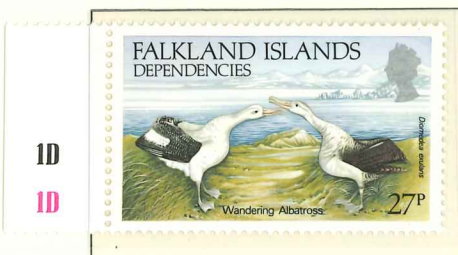


FALKLAND ISLANDS DEPENDENCIES

1984



1985



FALKLAND ISLANDS DEPENDENCIES

1985



FALKLAND ISLANDS DEPENDENCIES

South Georgia and the South Sandwich Islands

1986



Celebrating the
Marriage between
HRH The Duke of York &
Miss Sarah Ferguson at
Westminster Abbey
23rd July 1986

South Georgia and
the South Sandwich Islands



Celebrating the
Marriage between
HRH The Duke of York &
Miss Sarah Ferguson at
Westminster Abbey
23rd July 1986

South Georgia and
the South Sandwich Islands



Celebrating the
Marriage between
HRH The Duke of York &
Miss Sarah Ferguson at
Westminster Abbey
23rd July 1986

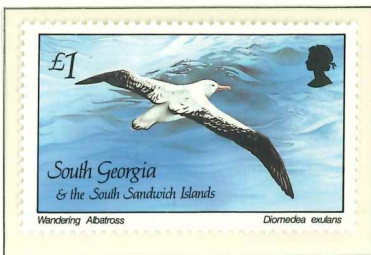
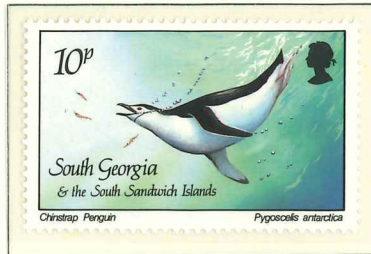
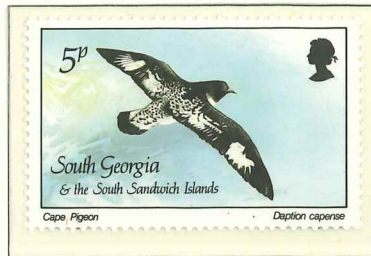
South Georgia and
the South Sandwich Islands

FALKLAND ISLANDS DEPENDENCIES

South Georgia and the South Sandwich Islands

Definitive series

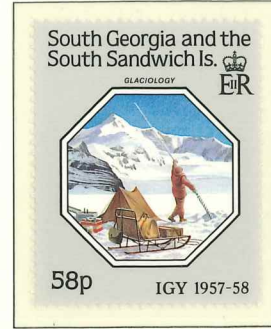
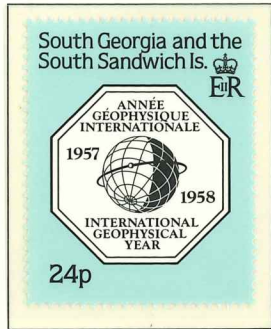
1987



FALKLAND ISLANDS DEPENDENCIES

South Georgia and the South Sandwich Islands

1987



IB

1988

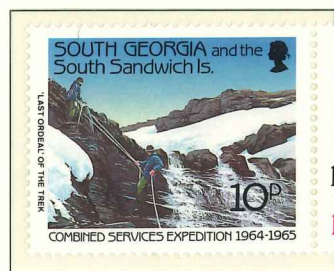
ID



FALKLAND ISLANDS DEPENDENCIES

South Georgia and the South Sandwich Islands

1989



1B
1B



1D
1D



1B
1B



1D
1D

FALKLAND ISLANDS DEPENDENCIES

South Georgia and the South Sandwich Islands

1990



'Se-tenant' strip of three printed in different sequences with three different types of inscribed labels.

FALKLAND ISLANDS DEPENDENCIES

South Georgia and the South Sandwich Islands

1991



FALKLAND ISLANDS DEPENDENCIES

South Georgia and the South Sandwich Islands

1992



FALKLAND ISLANDS DEPENDENCIES

South Georgia and the South Sandwich Islands

1992



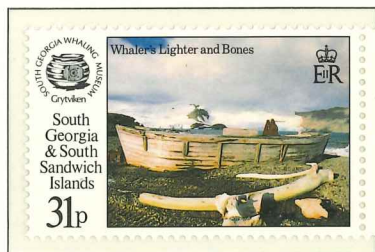
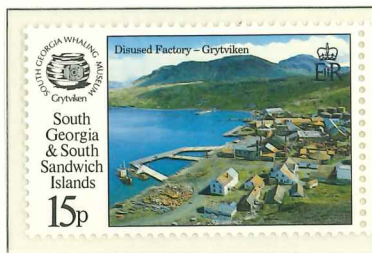
10th Anniversary of the Liberation of SOUTH GEORGIA & SOUTH SANDWICH ISLANDS

The Surcharge on these stamps is to be donated to SSAFA.

FALKLAND ISLANDS DEPENDENCIES

South Georgia and the South Sandwich Islands

1993

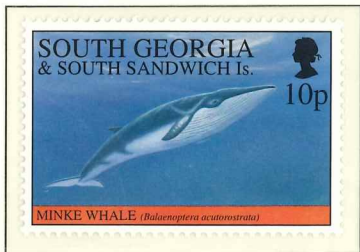
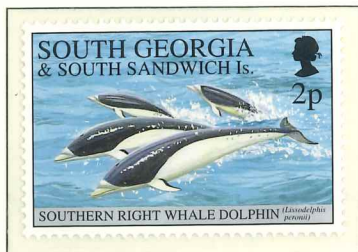


FALKLAND ISLANDS DEPENDENCIES

South Georgia and the South Sandwich Islands

Definitive series

1994



FALKLAND ISLANDS DEPENDENCIES

South Georgia and the South Sandwich Islands

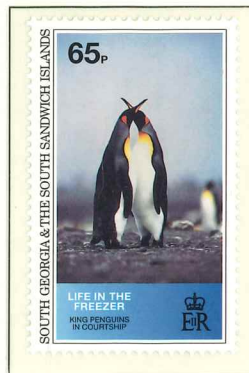
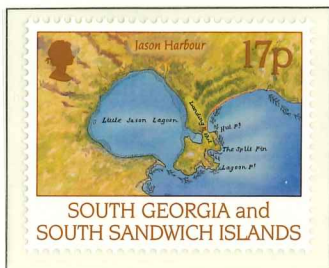
1994



1994



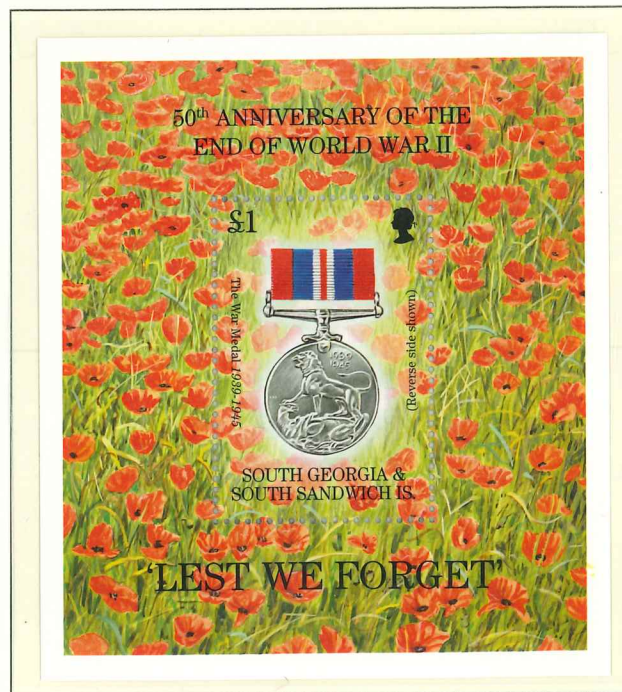
International Stamp Exhibition "HONGKONG '94"



FALKLAND ISLANDS DEPENDENCIES

South Georgia and the South Sandwich Islands

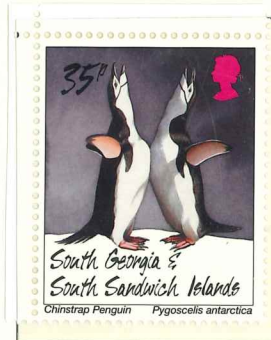
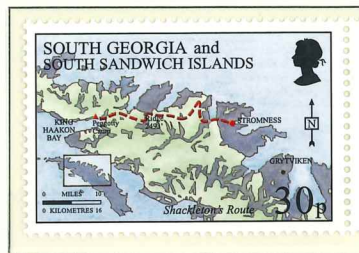
1995



FALKLAND ISLANDS DEPENDENCIES

South Georgia and the South Sandwich Islands

1996



FALKLAND ISLANDS DEPENDENCIES

South Georgia and the South Sandwich Islands

1997



BFS -

FALKLAND ISLANDS DEPENDENCIES

South Georgia and the South Sandwich Islands

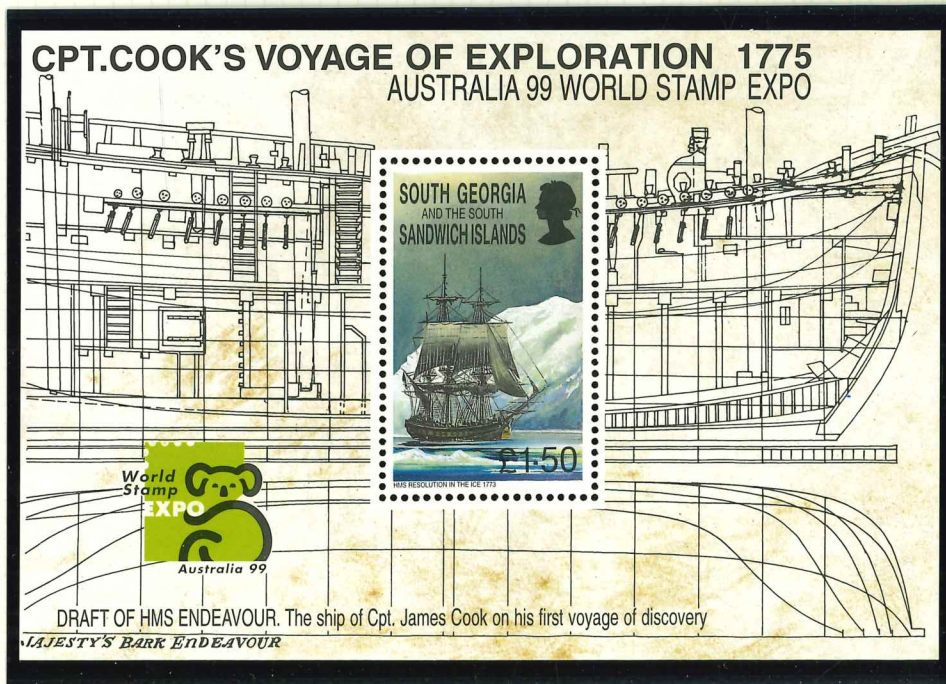
1997



278 a 283



378





284



285



286



287



289



288



290



291



292

DIANA, PRINCESS OF WALES
1 July 1961 - 31 August 1997



SOUTH GEORGIA & SOUTH SANDWICH ISLANDS 35p



SOUTH GEORGIA & SOUTH SANDWICH ISLANDS 35p



SOUTH GEORGIA & SOUTH SANDWICH ISLANDS 35p



SOUTH GEORGIA & SOUTH SANDWICH ISLANDS 35p

£1.40
+
20p
surcharge

In respect of international sales, 20p from the total selling price shown on the souvenir sheet will be donated to The Diana, Princess of Wales Memorial Fund.



In addition to the surcharge, 50% of the profits from the sale of this issue will be donated to The Diana, Princess of Wales Memorial Fund.





297



308

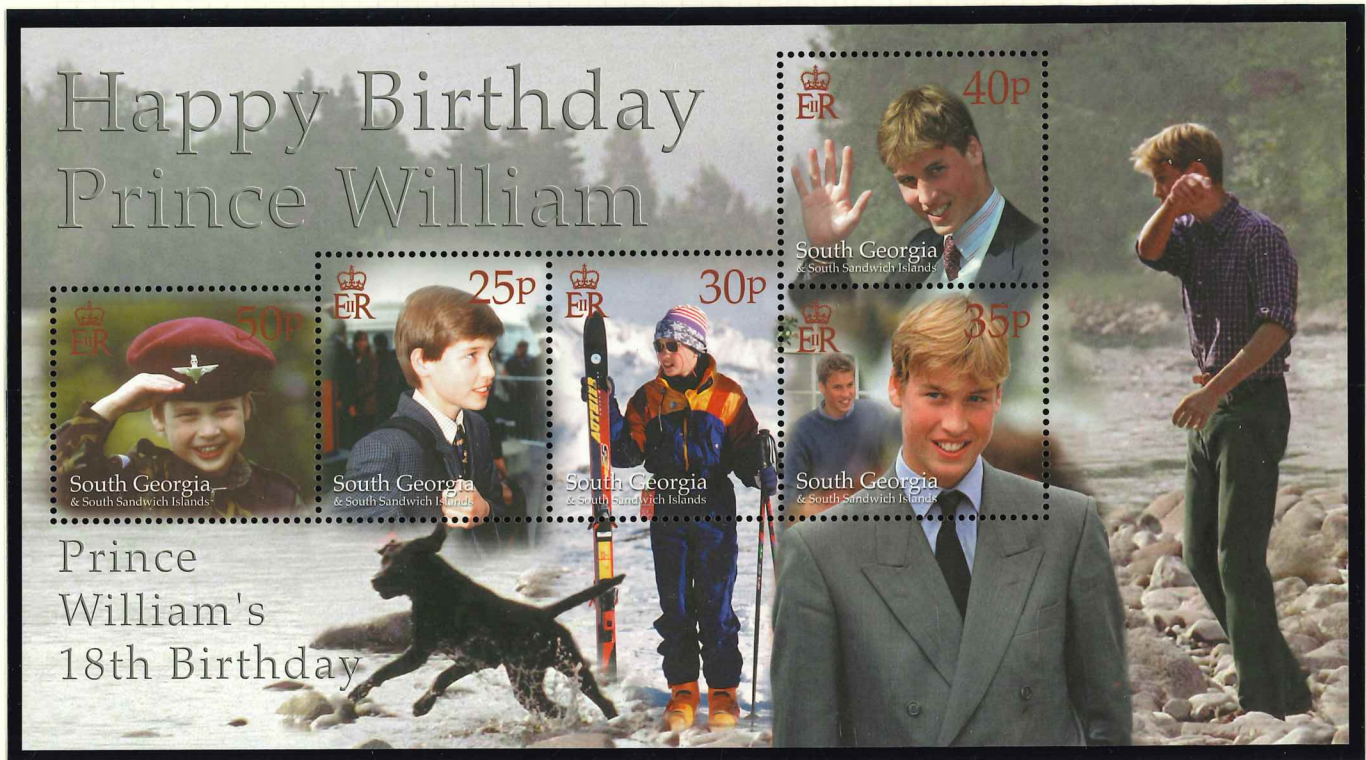




318



321



322



325

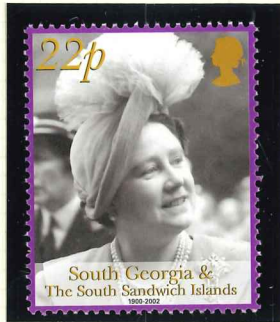




334 / 337



3F11



344 / 347



BF 13



349/351



352/355



356



357/358

1A 1A 1A 1A	1A 1A 1A 1A			
<p>South Georgia & South Sandwich Islands 40p</p> <p>1906 HMS Sappho visits Grytviken</p>	<p>South Georgia & South Sandwich Islands 40p</p> <p>1911 Norwegian Reindeer Introduced</p>	<p>South Georgia & South Sandwich Islands 40p</p> <p>1912 -Largest Blue Whale Landed - 35.5m</p>	<p>South Georgia & South Sandwich Islands 40p</p> <p>1916 Shackleton's Island Crossing</p>	Grytviken
<p>South Georgia & South Sandwich Islands 40p</p> <p>1922 Shackleton's Memorial Cross</p>	<p>South Georgia & South Sandwich Islands 40p</p> <p>1925 Discovery Investigations</p>	<p>South Georgia & South Sandwich Islands 40p</p> <p>1938 First powered flight over South Georgia</p>	<p>South Georgia & South Sandwich Islands 40p</p> <p>1943 Operation Tabarin</p>	Bird Island
<p>South Georgia & South Sandwich Islands 40p</p> <p>1957 Duke of Edinburgh Visits</p>	<p>South Georgia & South Sandwich Islands 40p</p> <p>1958 Bird Island Research Station</p>	<p>South Georgia & South Sandwich Islands 40p</p> <p>1964 Mount Paget Climbed</p>	<p>South Georgia & South Sandwich Islands 40p</p> <p>1982 Liberation of the Island</p>	Drygalski Fjord
<p>South Georgia & South Sandwich Islands 40p</p> <p>1985 Royal Charter and Crest</p>	<p>South Georgia & South Sandwich Islands 40p</p> <p>1992 Museum Inaugurated</p>	<p>South Georgia & South Sandwich Islands 40p</p> <p>2001 Applied Fishery Research</p>	<p>South Georgia & South Sandwich Islands 40p</p> <p>2003 Grytviken Remedial Work</p>	King Haakon Bay
1A 1A 1A 1A	 <p>Crown Agents</p>	BDT INTERNATIONAL SECURITY PRINTING LTD	1A 1A 1A 1A	



375-380



394-397

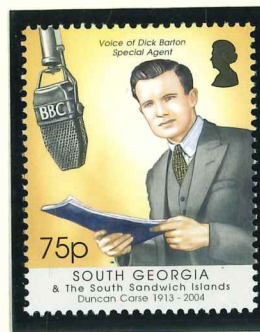


381 - 392

393



398-401



402-405



No 6 e 411



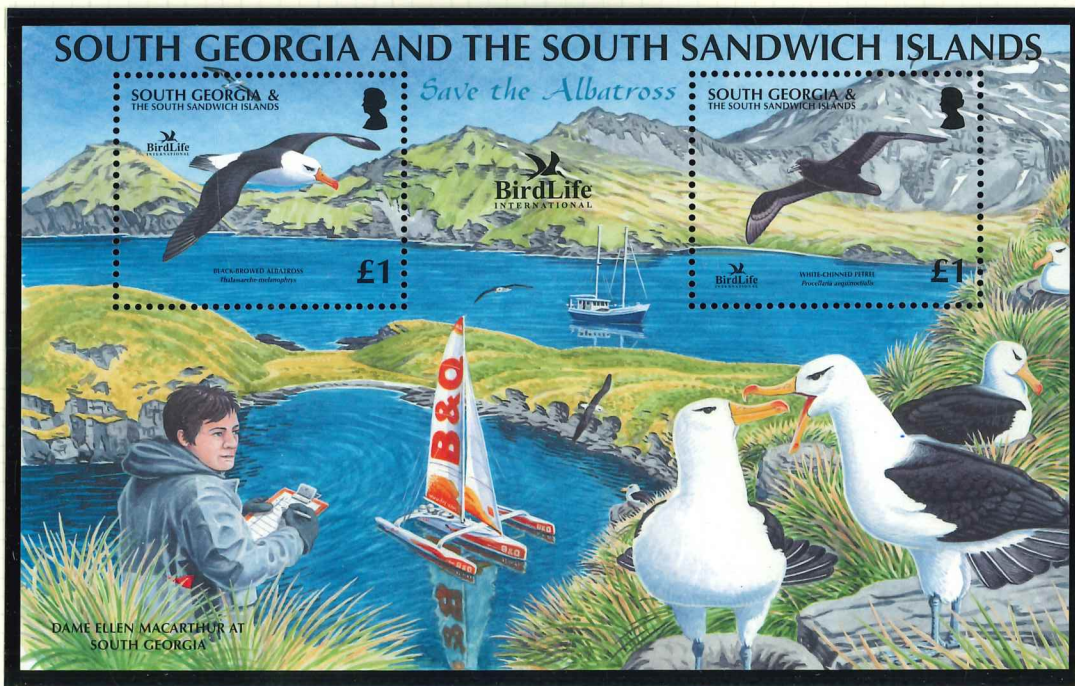
412 - 415



BF 14



416-419



GF 15



420-423



424-427

2007



428/31



432

433

434

435

436



437



432



439



440



441



442



443



444