

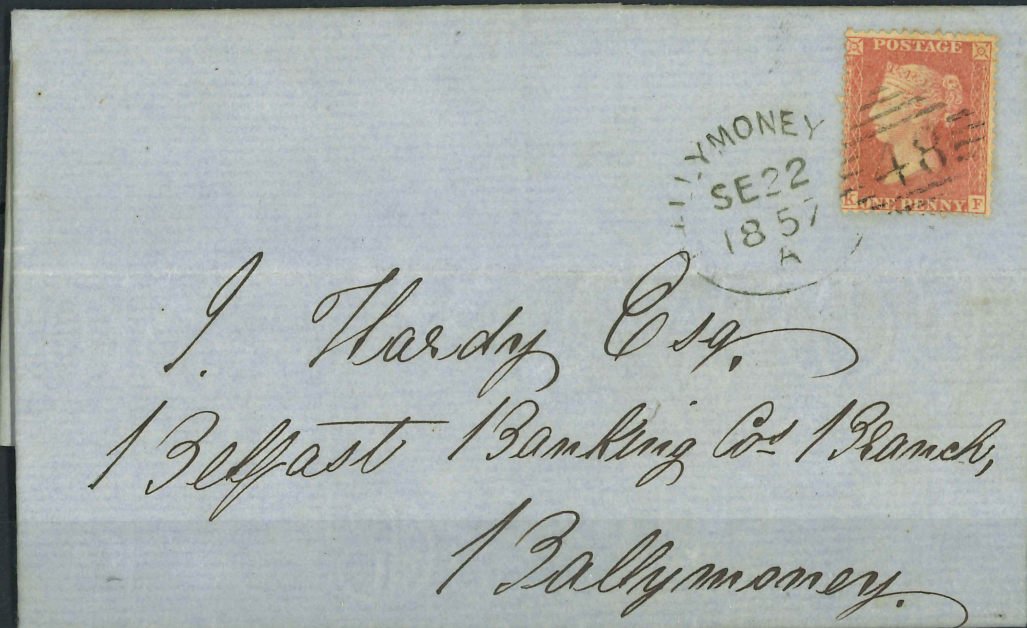


1857, TRANSITIONAL ISSUE  
ON TONED YELLOWISH TO  
CREAM PAPER (SG SPEC. 19)

1d. Large Crown  
P. 14  
Pl. 27.



Strip of 4, "Ennisbillyen 214" Spoon  
"DE. 9. 1861"



CORK (156) (ENGLISH TYPE OVAL OF BARS ENCLOSING 156)

KNOWN USED FROM 9<sup>TH</sup> MAY 1855  
TO 23<sup>RD</sup> FEB. 1857.


CODE E (OCT. 25<sup>TH</sup> 1855)

1<sup>D</sup> RED-BROWN DIE II PERF. 14  
(BLUED PAPER) PLATE 32



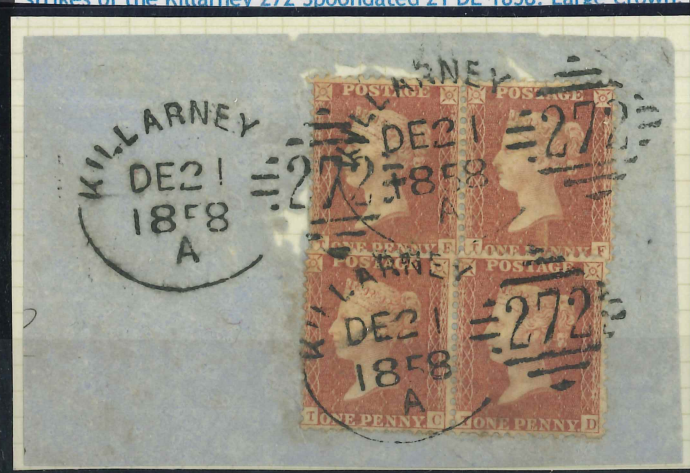
1857  
TRANSITIONAL  
ISSUE  
ON YELLOWISH  
TO CREAM PAPER  
LC. P.14.  
SG. SPEC. 09.



UNPLATE  
 "Enniskillen 214"  
 (MJ-NK) DE. 21. 1861

DESCRIPTION


SG40 1858 1d Red Plate 43 (TE-TF) (TC-TD) two horizontal pairs tied to a fragile and somewhat damaged/piece by very fine strikes of the Killarney 272. Spoodated 21 DE 1858. Large Crown



1857 Transitional Issue on  
yellowish to Cream Paper

Large  
Crown  
P.14



PLATE 4  
 "Enniskillen 214"  
 (OB-OD) Dec. 1. 1860



CONSTANT  
VARIETY ON  
EB



(SEE ILLUSTRATION  
1974 G.B. SIBCO  
PAGE 148)

1857-Transitional issue on  
yellowish to cream paper

SG. SPAC  
09



PLATE 43

Strip of 4  
(EB-EE)

"Enniskillen 214"  
AP. 2. 1859

1857 TRANSITIONAL ISSUE ON YELLOWISH  
TO CREAM PAPER, LARGE CROWN  
PERF 14.



PLATE 42  
Strip of 4  
(IG-IV)

"Enniskillen 214" duplex  
"AP. 7. 1861"