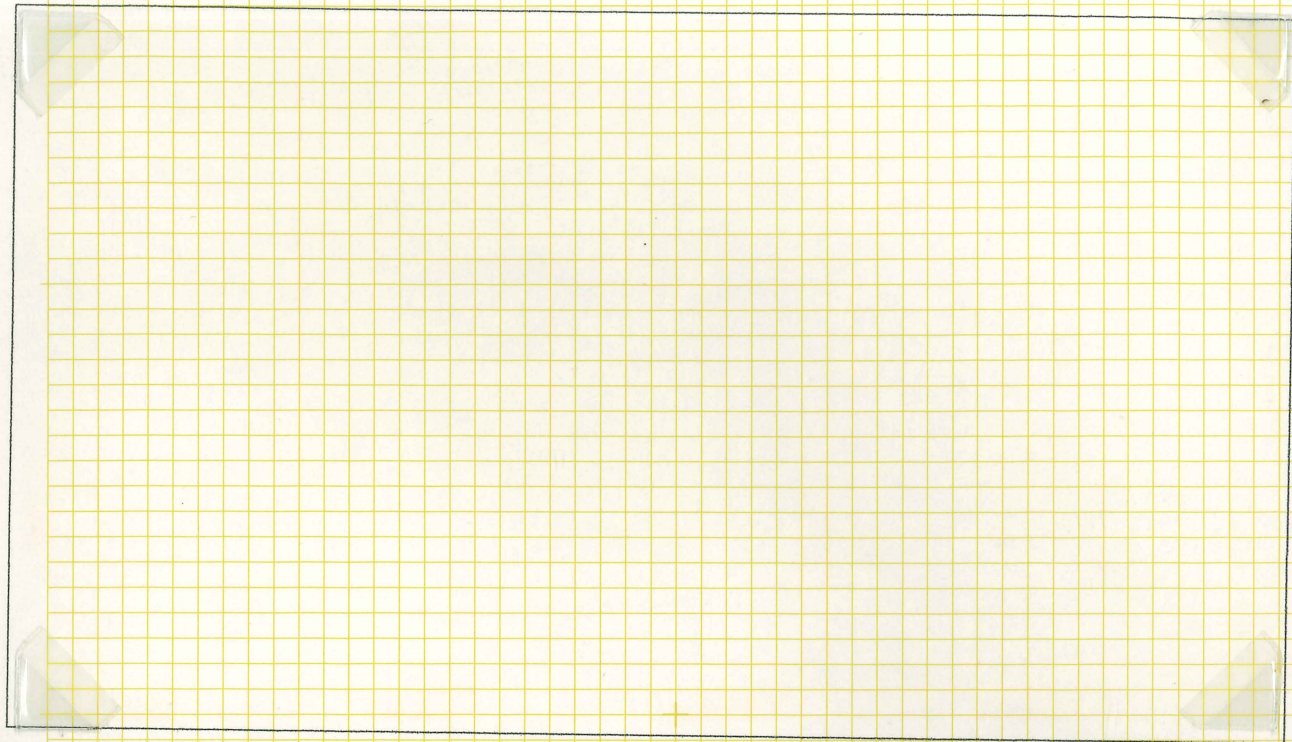
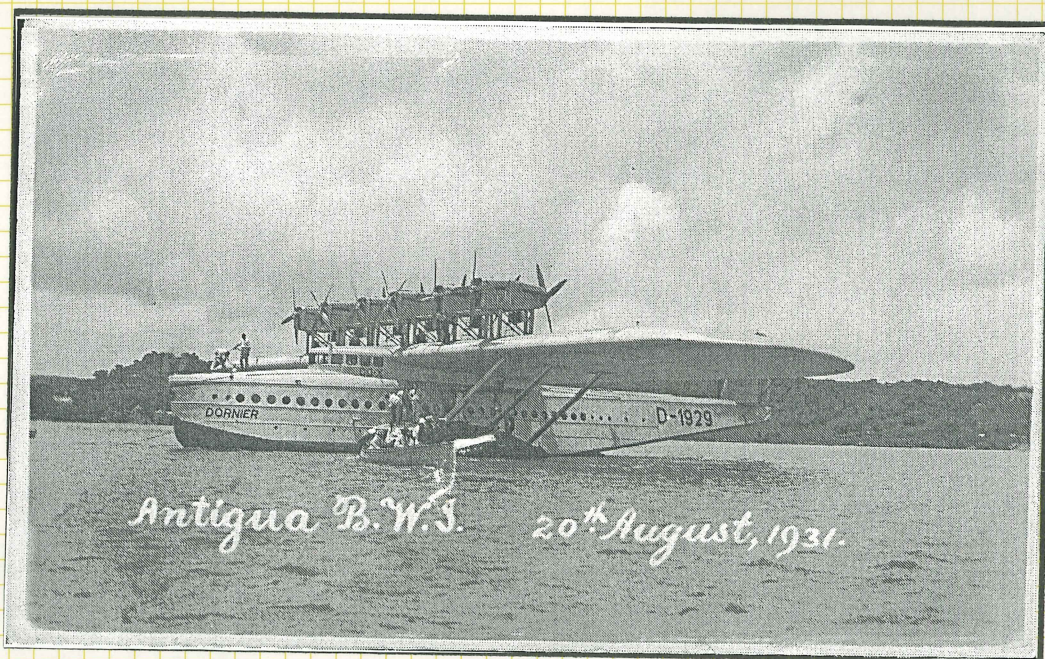


In August 1931 the huge Dornier DO-X airliner called at Antigua.

This 12-engined goliath was on a proving flight from Germany to the United States and had been en-route for nearly 10 months due to various misadventures.

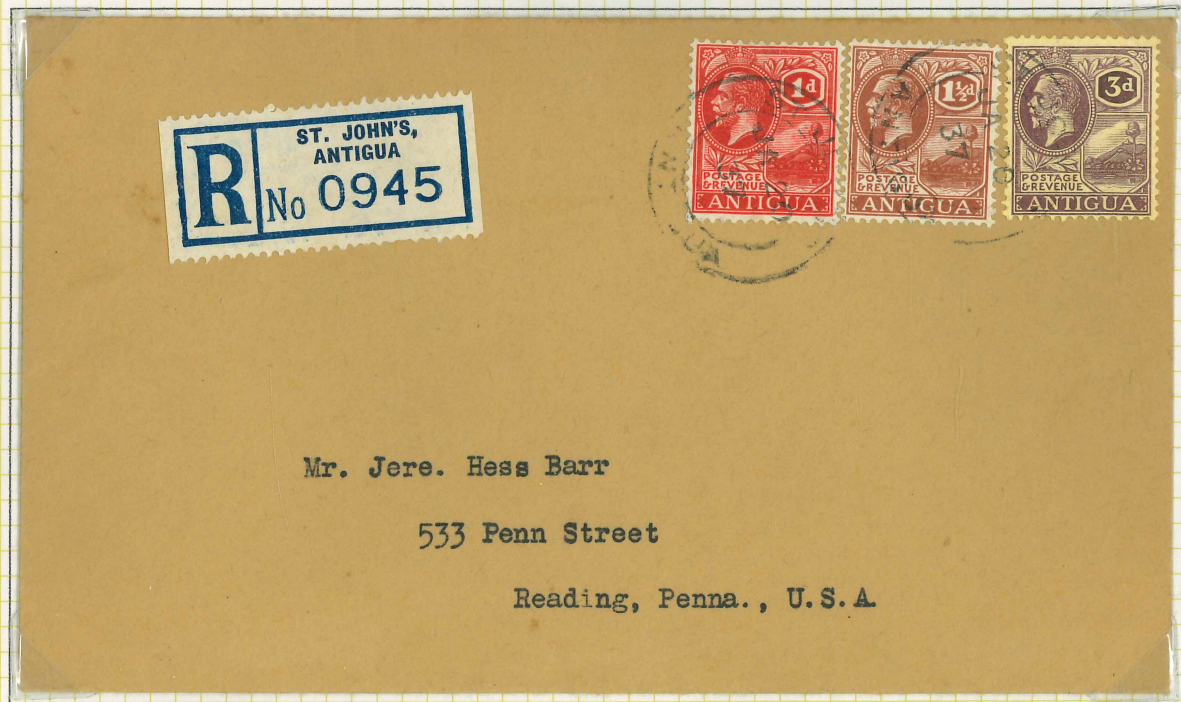


This cover addressed to the UK is franked by 3 x 4d adhesives and shows a special flight cachet from Antigua; it also shows a Jusqu'à mark in black indicating that the journey from New York to England was completed by sea.





A commercial cover to the USA, to the Chrysler Car Company, Detroit, dated 26 October 1928.



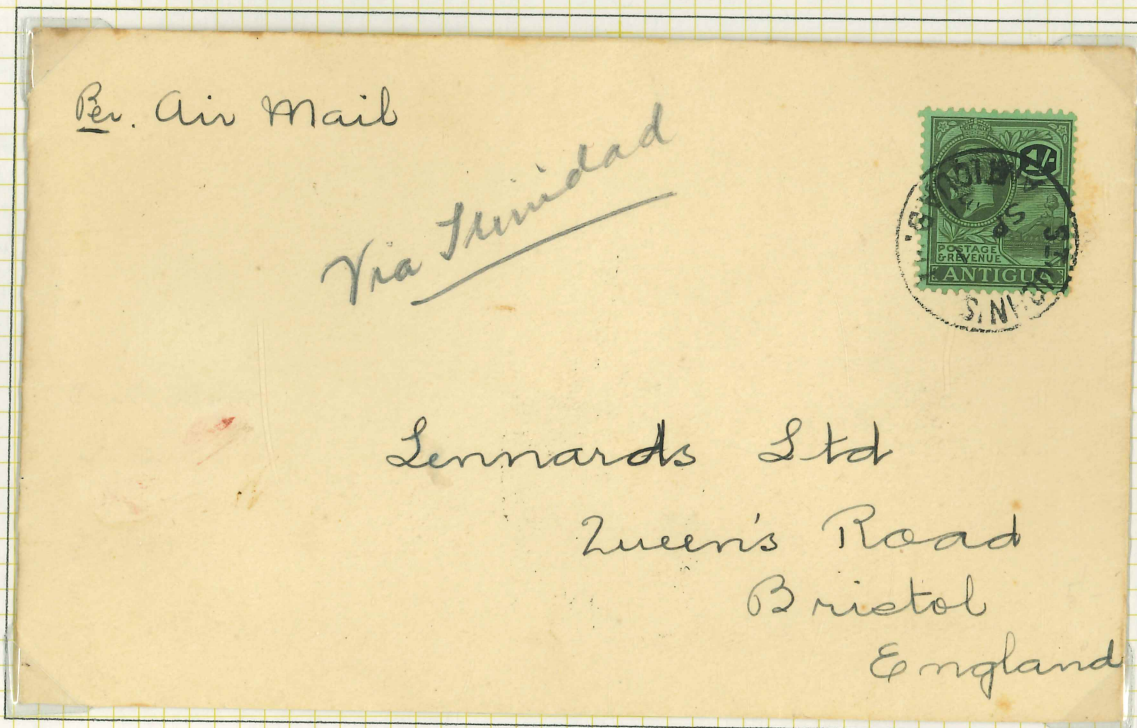
A very late use of these stamps, dated 20 January 1937.



A rather quaint habit, common in those days, of placing the adhesive on the picture side of a postcard. This example of a 'Traveler Palm, Botanic Station, Antigua, B.W.I.', is dated 2 October 1930.



Another late use of these stamps combined with a Federal issue 2d grey.

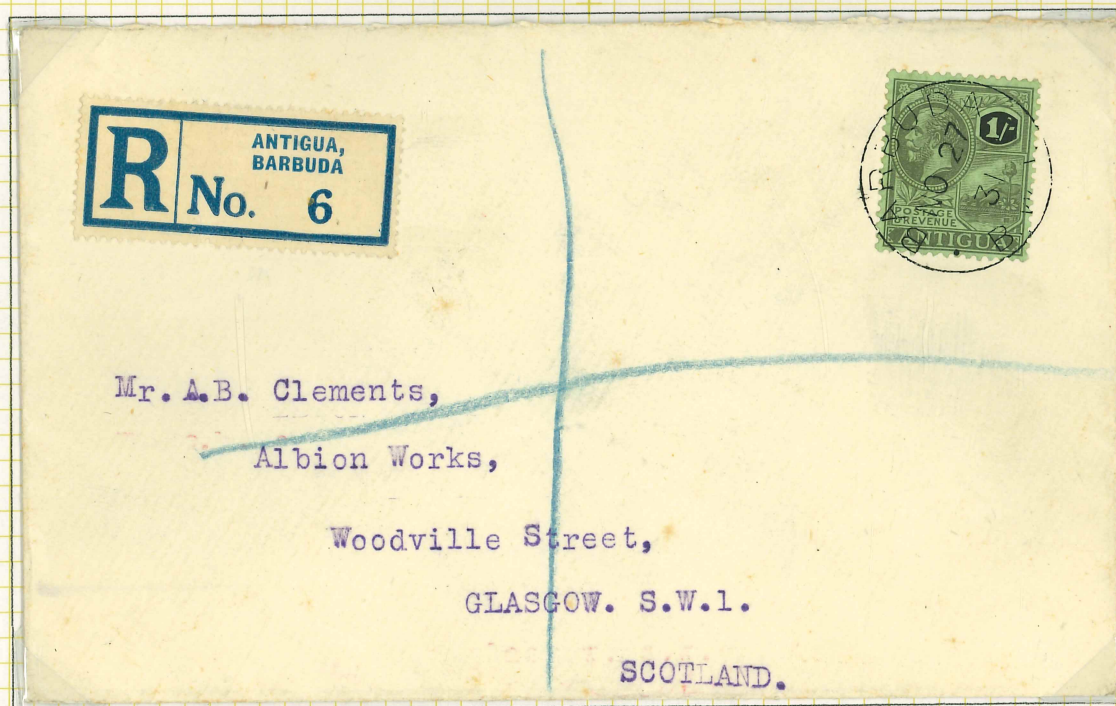


A commercial cover, addressed to Bristol, via Trinidad, dated 1 September 1931



Dr. H. Burnett-Bruce,
Pittwater Road,
Collaroy Beach,
SYDNEY ; AUSTRALIA.

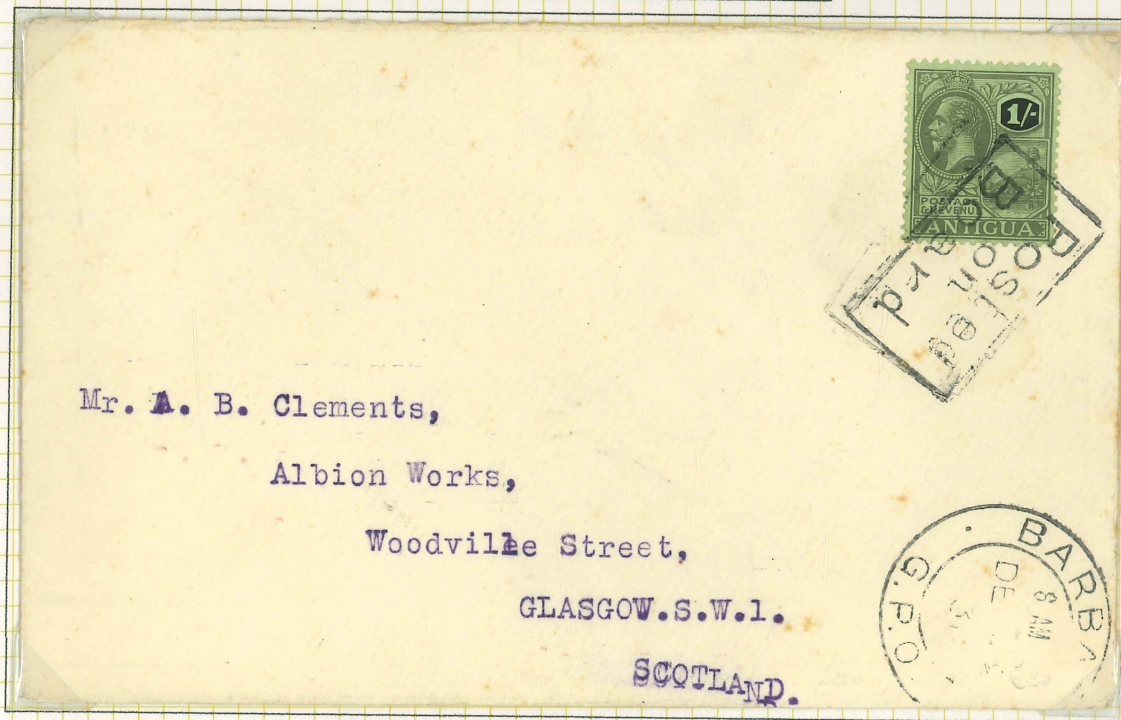
Antigua adhesives were also used in Barbuda; this neat printed cover, no doubt philatelic, bears not only a 1½d adhesive of Antigua but two of the overprinted Federal issue ½d. It shows a clear Barbuda cds of 21 November 1930 (Oliver B1).



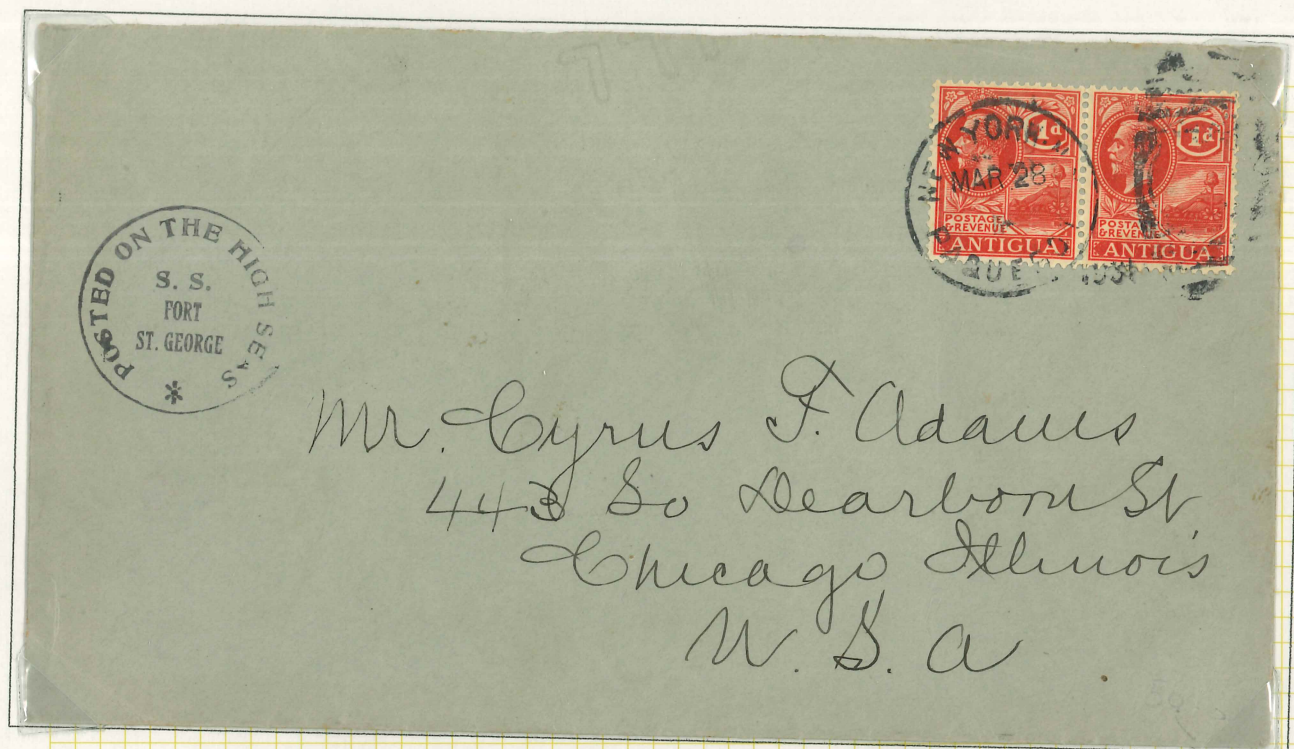
Mr. A.B. Clements,
Albion Works,
Woodville Street,
GLASGOW. S.W.1.
SCOTLAND.

Another cover, this time addressed to Scotland and registered, is franked with a 1s and dated 27 November 1931 (Oliver B1).

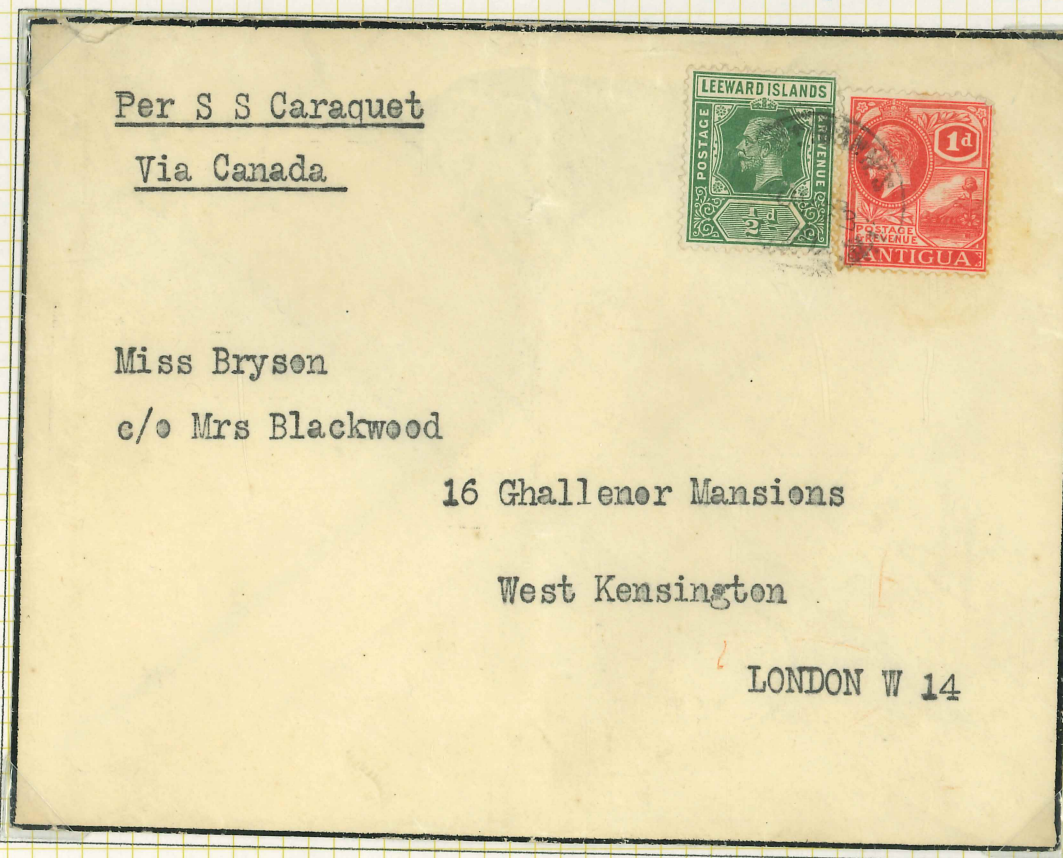
The period in which these stamps were in use was the heyday of the ocean liners – with smaller ships servicing the inter-island routes.



These two covers were obviously posted on board the same ship at the same time, but probably, because of the different envelope sizes, posted by different people. The ship was en-route to Barbados, where the letters entered the postal service and were postmarked 'BARBADOS' and dated 20 December 1931.



This cover, addressed to Chicago, was posted on board the **S.S. FORT ST. GEORGE** of the Furness-Bermuda Line and handstamped with the ship's cachet. The two 1d adhesives are cancelled with a 'NEW YORK PAQUEBOT' duplex of 28 March 1931.



This mourning cover to the UK is endorsed **S.S. CARAQUET**, a 5,000 ton liner of the Royal Mail Line, unfortunately void of the usual cachet used on this ship. The cover is franked with a 1d as well as a 1/2d Federal issue.

After a survey flight in the July, the first commercial flight from Miami was made on 21 September 1929; the pilot was Col. Charles Lindberg.



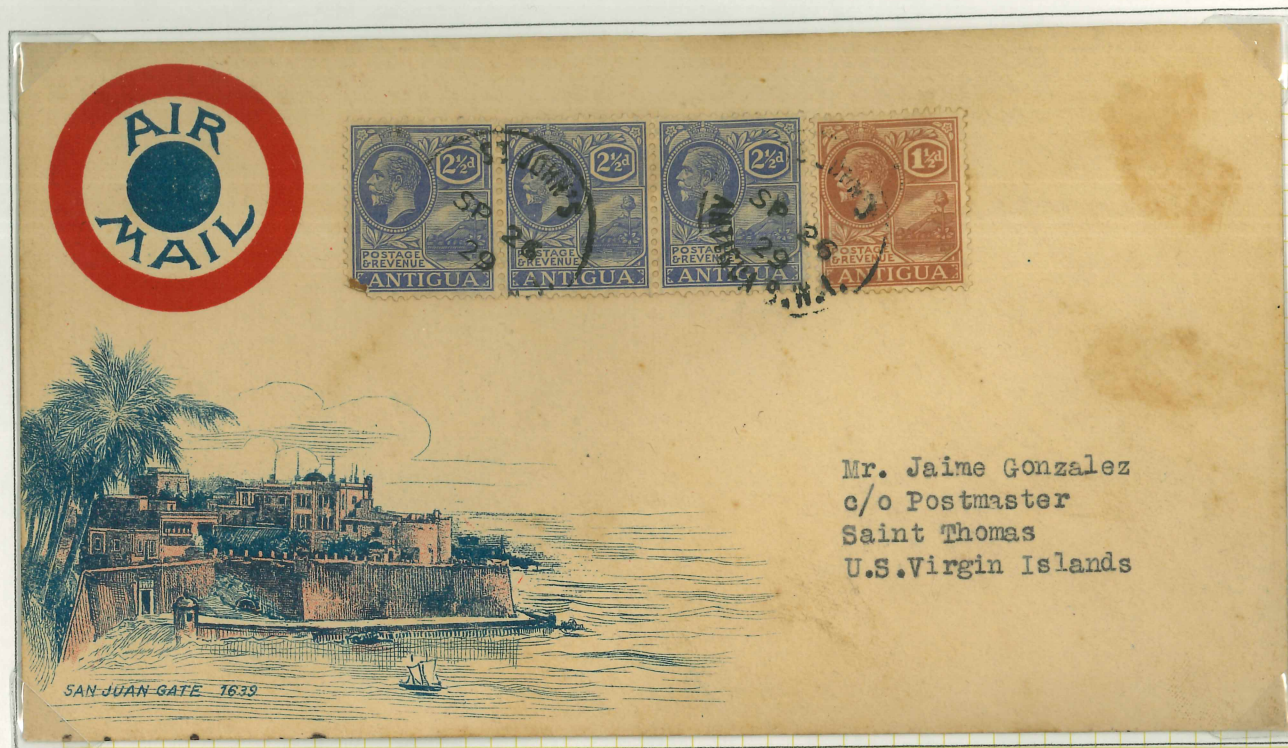
This First Flight cover to St. Lucia is franked with a 1½d and three 2½d adhesives and cancelled with a St. John's, Antigua cds and a blue 'BY AIR MAIL/PAR AVION' label. This flight initiated the Foreign Air Mail 6 (FAM6) contract by Pan American Airlines.



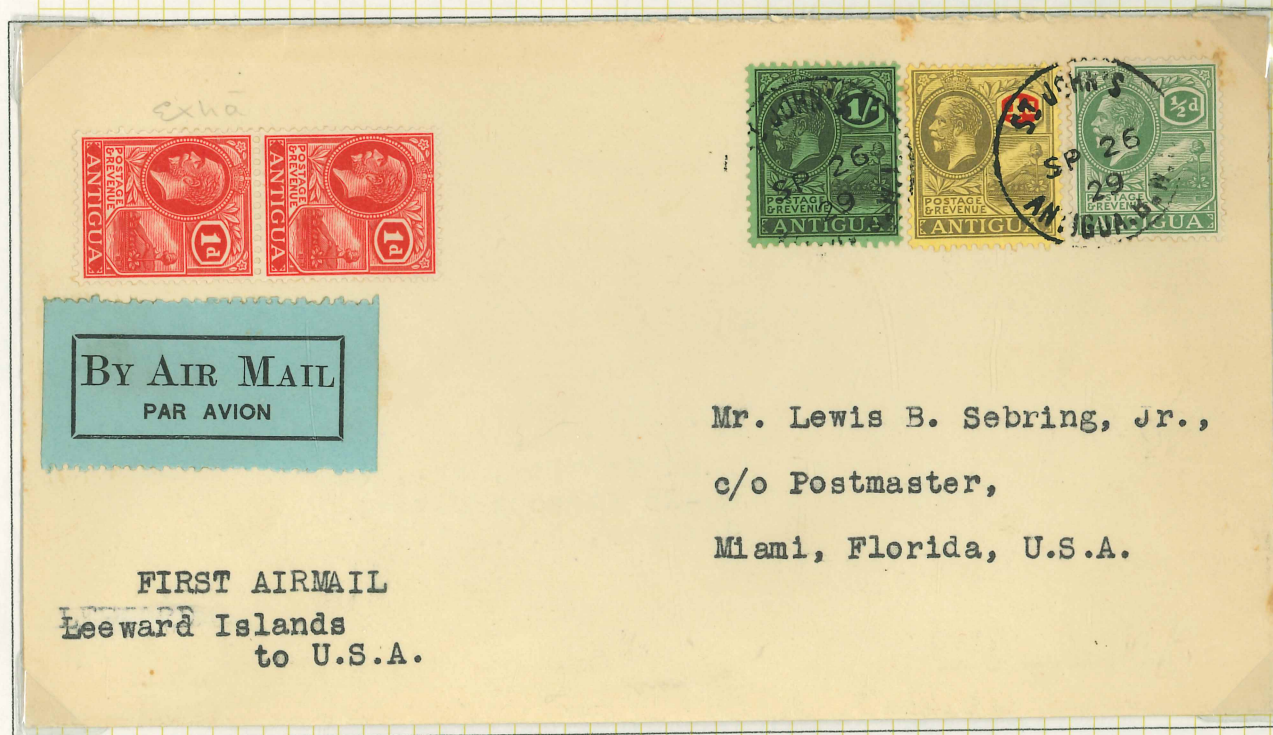
The return flight left Dutch Guiana on 24 September 1929, piloted by Capt. Jack Tilton. Mail from Antigua was sent via St. Thomas to Puerto Rico. This cover left Antigua early on the 26th, arriving at San Juan later the same day (the cover is backstamped with this date). It is franked with a 3d and 6d adhesive.



This unaddressed cover has the First Flight cachet of the FAM6 route and bears 1d, 1½d, 2½d and 4d adhesives. Markings on the reverse show it ended up in New York.



This illustrated cover, addressed to a Puerto Rican philatelist and flown on the return flight, bears a 1½d and three 2½d adhesives.



This cover addressed to Miami on the first return flight, bears a slightly different St. John's postmark. It is reputedly its last known day of use. The two 1d scarlet are believed to have been added subsequently.

© SENATOR STANDARD ALBUM LEAF No. 0387
STANLEY GIBBONS PUBLICATIONS LTD. LONDON AND RINGWOOD
MADE AND PRINTED IN ENGLAND



These two covers, addressed to the USA, were carried on the return First Flight and bear the cachet 'FIRST AIR MAIL/ANTIGUA TO U.S.A./SEPTEMBER 1929'.



This cover was addressed to the UK, bears a 'Jusqu'à' mark indicating that insufficient postage had been paid and that the letter would proceed by sea.

During this period, there were many village postmarks in use.



This Montgomery Ward cover to Chicago shows a St. Mary's cds, dated 11 October 1924.



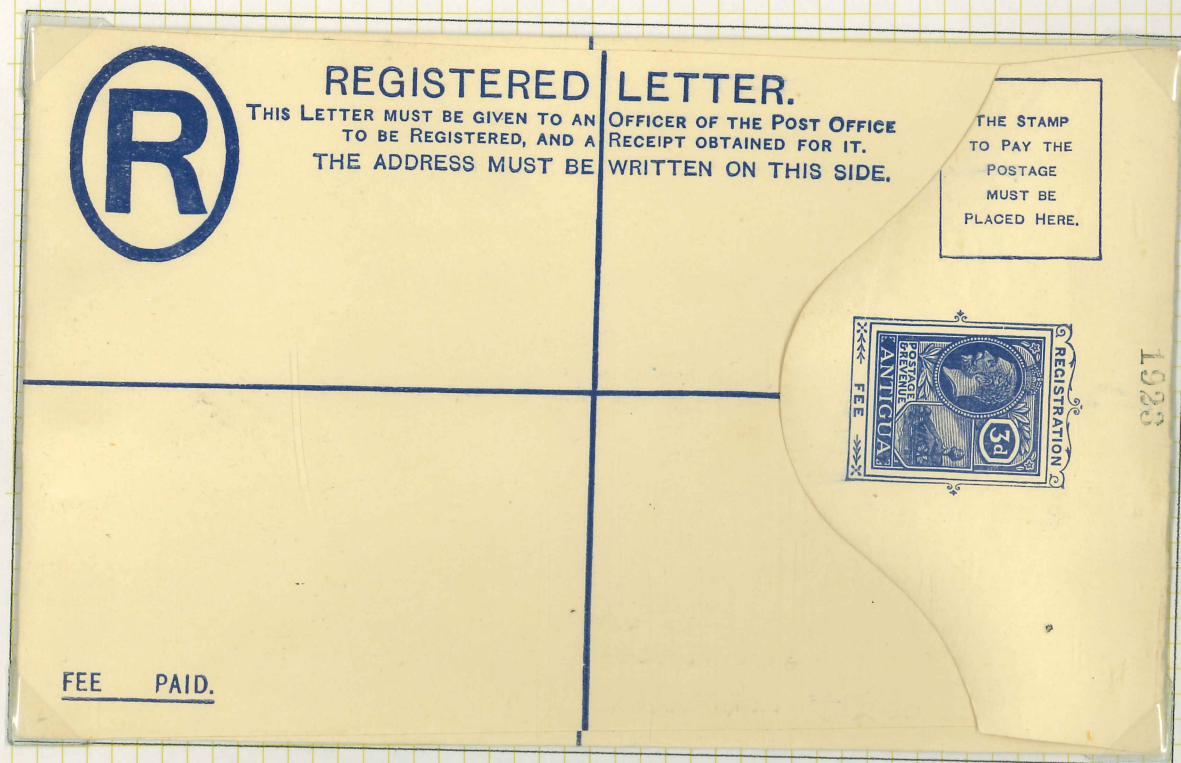
This interesting cover is addressed to Lennards Limited of Bristol, well-known boot and shoe makers. It is franked by four copies of the Leeward Islands keyplate 1d and a single 1/2d of Antigua. Of more interest is the fact that it emanates from Parham (formerly St. Peter's) and bears the St. Peter's cds as well as the scarce Parham registration label.

The design which appeared on the stamps was to reappear in a different guise, i.e. on postal stationery.



Antigua only had one postcard with this design, a 1/2d.

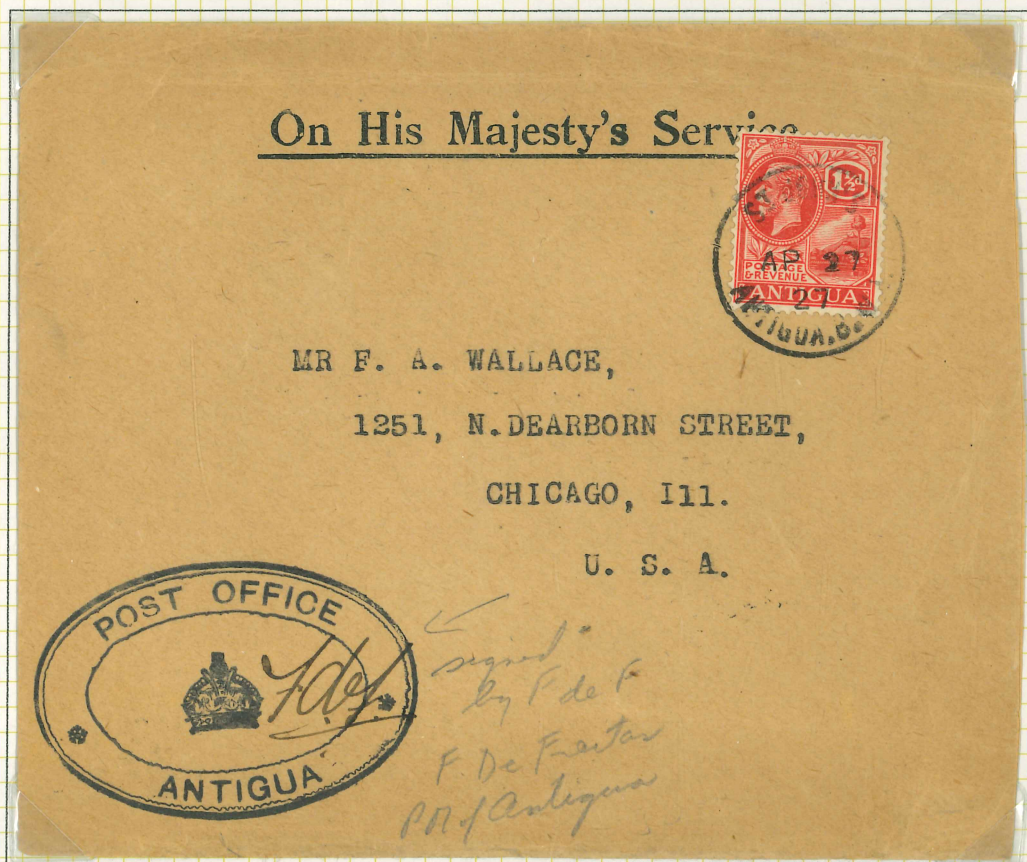
The design was also used for postal stationery registered envelopes.



This is the Size G envelope overprinted 'SPECIMEN' (UPSS D4) and inscribed with the year date '1923' indicating that it is from the UPU archives and the year date they were received.



This rather attractive 'WILSON' philatelic cover, dated 15 January 1924, bears 1/2d, 1 1/2d, 2d and 6d adhesives.



A 1 1/2d OHMS cover to the USA, personally initialed by the Postmaster-General of Antigua, Mr. F. De Freitas, and dated 27 April 1927.



This cover was carried on the First Flight from Antigua to Kingston, Jamaica by Pan American Airlines. Only 36 letters were carried and it was cancelled at St. Johns on 13 December 1930.



In these early days, routes were continually changing and in January 1931, FAM6 was extended to French Guiana. This cover is dated 13 January 1931.

1924 This is the Size H2 envelope again a copy overprinted 'SPECIMEN' and taken from the UPU archives and dated '1923'.

© SENATOR STANDARD ALBUM LEAF No. 0387
STANLEY GIBBONS PUBLICATIONS LTD., LONDON AND RINGWOOD
MADE AND PRINTED IN ENGLAND



Before moving on to the uses of these issues, there is one variety which is of interest. This is the so-called 'shifted *découpage*' variety. This is in the form of a colourless shadow appearing beside the duty imprint. The reasons for this variety are rather complicated but for those interested, the book *Fundamentals of Philately* by L. N. Williams has a good explanation.

It is most unusual to find this variety on cover.

