

British Guiana

1890 PROVISIONAL

"ONE CENT" ON \$1, \$2, \$3 AND \$4 VALUES.



The original Inland Revenue values were printed in sheets of 120 with a vertical gutter which was then guillotined making two sheets of 60. It was these sheets of 60 which were locally overprinted "ONE CENT" in red with two parallel horizontal lines obliterating the original value.

These obliterating lines were printed as continuous lines across the sheet of 60 almost, but not quite reaching the edge of the stamps in the first and sixth vertical columns.

COLUMN 1

COLUMN 6



British Guiana

The original printing of the \$4 Inland Revenue stamp had a listed variety - large "4" - which occurred on all ten stamps in the second vertical column.



The top and bottom strips are backed by a tissue-like material to prevent adhesion of the sheets when they were sent to a hot and humid tropical climate.

British Guiana

The ends of the top and bottom lines obliterating the original values are not always one above the other. These are the variations for the leftmost column.



Row 1

Row 2

Row 3



Lines end vertically one above the other.

British Guiana

- Row 4 Top line ends slightly to the left of the bottom.
- Row 5 Top line ends slightly to the right of the bottom.
- Row 6 Lines end vertically one above the other.
- Row 7 Lines end vertically one above the other.



- Row 8 Top line ends well to the right of the bottom.
- Row 9 Top line ends slightly to the right of the bottom and narrows towards the end.
- Row 10 Lines end vertically one above the other.

British Guiana

There are similar variations in the rightmost column.



- Row 1 Top line ends to the left of the bottom.
- Row 2 Top line ends to the right of the bottom.
- Row 3 Top line ends to the right of the bottom and narrows slightly towards the end.

- Row 4 Top line ends to the left of the bottom.
- Row 5 Top line ends to the left of the bottom.
- Row 6 Top line ends to the right of the bottom.
- Row 7 Top line ends slightly to the left of the bottom.



British Guiana



- Row 8 Lines end vertically one above the other.
- Row 9 Top line ends to the left of the bottom.
- Row 10 Top line ends to the right of the bottom.

Also, there are cases of a "Double" overprint.



British Guiana

CONSTANT VARIETIES OF THE "ONE CENT" OVERPRINT.

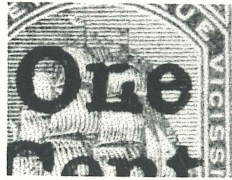
As with many of the local overprints done within the Empire, what we would nowadays call quality control was practically non-existent and therefore there tended to be many varieties on the overprinted sheets.

Variety No. 1 Dent in "C" of "Cent". (Row 10/Column 2)



British Guiana

Variety No. 2 Break in "n" of "One". (R10/6)

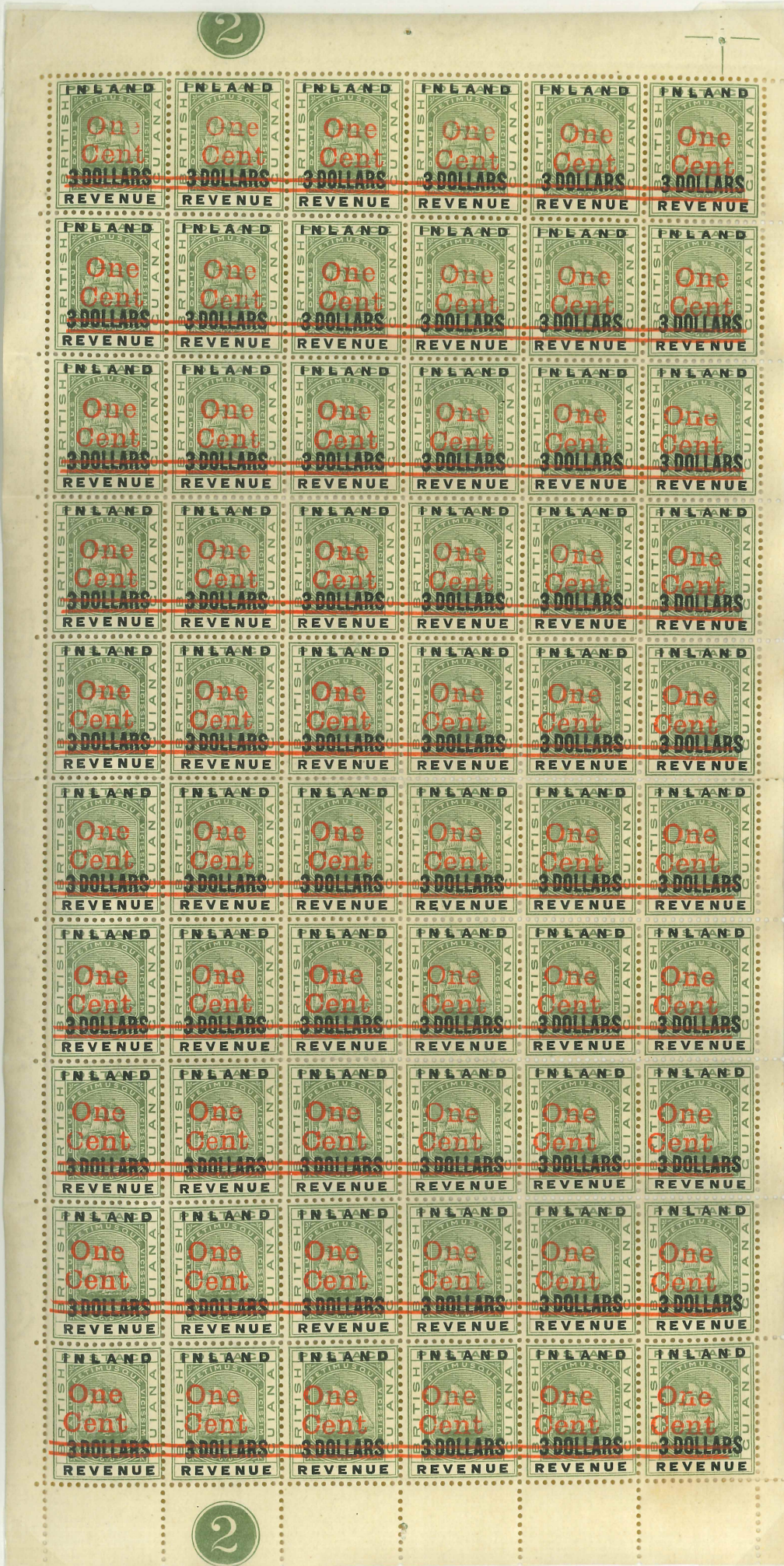


Variety No. 3 Short tail to "e" in "One". (R10/5)



Both varieties on this page are evident in this corner block of 6.





All the
aformentioned
flaws are evident in
the following two
complete sheets of
these stamps.
Other flaws may be
apparent but
usually these are
not constant; some
indeed are not
visible in early
printings only
becoming evident
as the printings
advance towards
the end of the run.

British Guiana

Variety No. 4 Break or dent in "e" of "One". (R8/2)



British Guiana

Variety No. 5 Short outer serif on right leg of "n" in "One". (R8/3)



British Guiana

Variety No. 6 Weakness in 7 o'clock position of "O" and weak left side to "e" of "One".
(R6/3)



British Guiana

Variety No. 7 Weakness to top of "n" and "e" of "One". (R3/6)



British Guiana

Variety No. 8 Weak left side to "e" of "One". (R1/1)



Variety No. 9 No outside serif to right leg of "n" of "One". (R3/1)



British Guiana

Variety No. 10 No outside serif to left leg of "n" of "One". (R1/3)

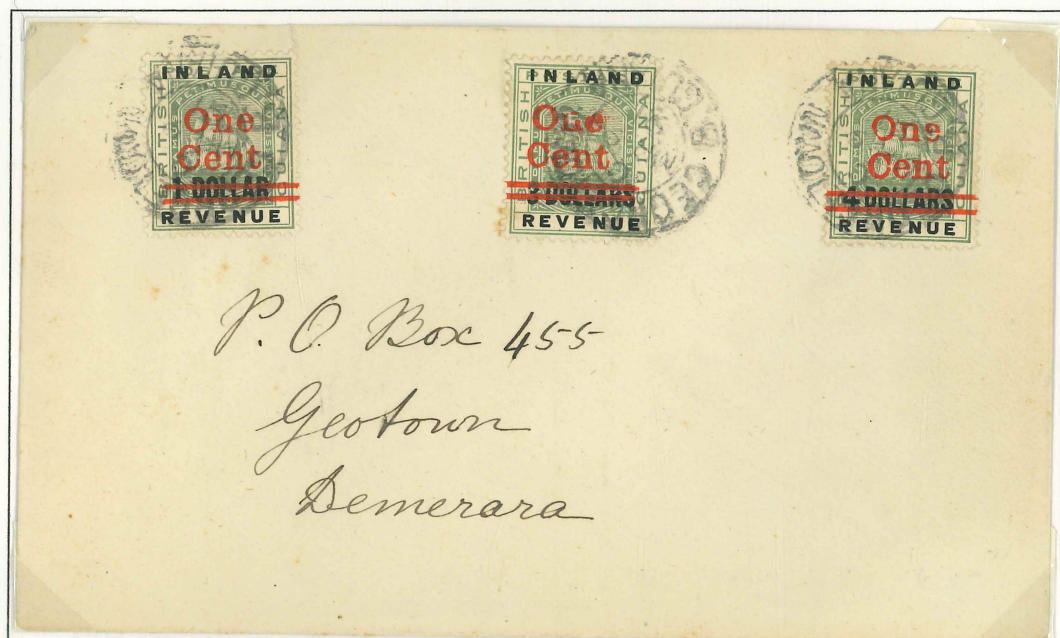


Variety No. 11 No outside serif to left leg of "n" of "Cent". (R2/3)



British Guiana

It is possible using the flaws and varieties listed above to position most of this issue even from a single stamp; and with pairs or small multiples it should be possible to position all of them.



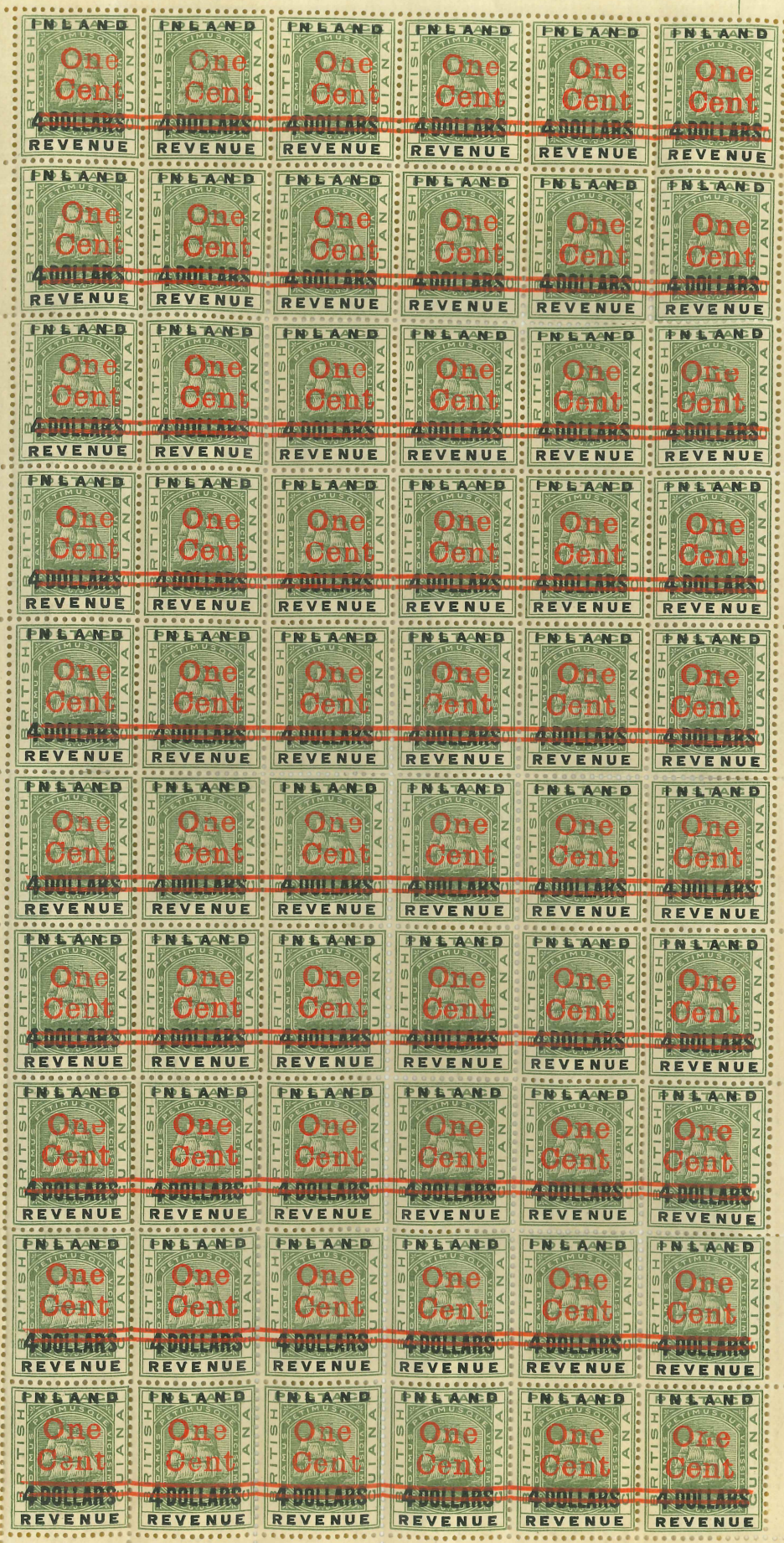
British Guiana



All the previously mentioned varieties are present on this block of 18.

- R8/2 Break or dent in "e" of "One".
- R8/3 Short outer serif on right leg of "n" in "One".
- R10/2 Dent in "C" of "Cent".
- R10/5 Short tail to "e" in "One".
- R10/6 Break in "n" of "One".

2



2