

IRISH STAMP COLLECTION
of
BARRY COUSINS

2 BOOKS
4AS1 & 4AS2
(Do not break up)

DOLLARD PRINTING HOUSE
ISSUE 1T

STAMP REF. T1, T2, T3
(plus odd examples from overprint references T4, T6, T8)

OVERPRINT TYPE (LETTER)
VARIETIES & FLAWS

+

BASIC STAMP CONFETTI
FLAWS

1922 Irish Overprints - The Low Value Issues

The Dollard Issue

by M.H.Priestly

1. Introduction.

The aim of this series of articles is to summarise the wealth of information on the low value overprints which has been published in the Revealer and Irish Philately or which is available in print. The source of information is noted in the text and listed at the end of each article. Photostats of the Revealer and Irish Philately references are available from the author. Where several sources give similar information, generally the source with the most detail will be given.

2. Background to the Dollard Issue.

The Treaty establishing the Irish Free State was signed on December 6th 1921. The Post Office was operating under difficult conditions; the GPO had been destroyed during the Easter Rising and was still in ruins; the mails between Dublin and Cork had practically ceased overland. The postal administration which was to be taken over by the new government was making a loss of £1.25 million per year. [Editor's note: The two latter statements are not wholly correct. They are applicable later in 1922, not at the start of the year when the Post Office was still under British administration].

Mr. J.J.Walsh, the first Postmaster General, invited designs for a new series of postage stamps for Ireland. In the meantime it was decided to overprint British stamps. Dollard Printing House, Dublin was invited to submit bids for overprinting the ½d, 1d, 2d, 3d, 4d, 5d, 10d and the 2/6, 5/- and 10/- value British stamps. On February 2nd 1922 Dollard submitted their bid, which was accepted the same day.

A six weeks supply of stamps was ordered, to a face value of £215,000 (including 49,000 sheets for Dollard) and this was received by the GPO on February 10th. Overprinting began on Saturday February 11th. On Tuesday February 14th the Post Office Department began distribution to Head Post Offices and by Friday February 17th 1922 overprinted stamps were on sale at all post offices (1).

Between February 17th and March 31st both overprinted and unoverprinted stamps were current in Southern Ireland. During this period overprinted stamps were not valid in Northern Ireland or Great Britain, but a number of overprinted letters did reach destinations there (2). [Editor's note: Overprinted stamps were valid in both Great Britain and Northern Ireland for both postal and other purposes up to March 31, 1922. This is clear from the British Post Office Circulars of the period]. Covers with both overprinted and unoverprinted stamps were known as combination covers (3).

Control of the Post Office did not pass to the Irish authorities until April 1st 1922. Until then proof sheets of each value of Dollard and Thom issues had to be sent to London. They are now at the London Postal Museum (4).

After April 1st unoverprinted stamps were not valid in Ireland and were surcharged if detected (5), except for British postal entires with imprinted values (2). Overprinting by Dollard continued until 12th June when stamp

deliveries to the company ceased and the contract was cancelled. This was probably due to the Government being concerned that the Dollard works was close to the area of the battle of the Four Courts (1). Another factor may have been that the Post Office Department had become irked by lax procedures at Dollard (6).

3. The Dollard Overprint.

Overprint Type. Dollard used an overprint for printing the low values which differs from all the other types in that the date 1922 is set in antique type with the figure 1 similar to the Roman type and the tail of the 9 below the base line of the other numbers (7). The Irish overprint "Rialtas Sealadač na hÉireann 1922" (Irish Provisional Government 1922) was suggested by the Postmaster General (8).

Printing. The printing plates were set up using a Monotype machine which set up one letter at a time. A number of clichés were made each 3 rows wide and 5 rows high. From this a matrix was prepared and stereos made. Sixteen stereos were locked or nailed on a base in 4 rows each of 4 to make up the composite printing plate. The printing was performed on a Dawson Wharfedale flat bed machine (1), which is illustrated in the Revealer (9).

Plate Settings. Three stereo settings were used for the plates. The first setting was very accurately set with no setting varieties. The 1 of Sealadač is vertically above the n of na and the 1 of 1922 is directly under the i of hÉireann. The horizontal repeat of the overprint was practically the same as that of the stamps; the vertical repeat of the overprint was a little short.

The reason for changing the setting was said to be with a view to improving the register of the printing. The second and third settings show a slight reduction of the horizontal repeat and a slight lengthening of the vertical repeat. These later settings were not nearly as accurately set up and show many shifted lines (6). 31 varieties of setting are possible (1 from Setting 1 and 15 each from Settings 2 and 3). An attempt was made to distinguish between these varieties (10) but slight variations between measurements on different sheets made this unsuccessful. However the general similarity between Settings 2 and 3 made it likely that Setting 3 was made to eliminate the damaged č of Sealadač in the top left stamp of the stereo in Setting 2 (11).

Black Overprints. The ½d, 1d and 3d values are found in all three settings. The 5d, 9d and 10d are found in Settings 1 and 2, and the 2½d and 4d only in Setting 1 (6).

The ink used is non glossy black, colour deep black to grey black (7). It is possible that the grey black was not a different ink but a mixture of the normal ink with the cleaning solvent (12).

Red Overprints. Shortly after the 2½d, 4d and 9d values were issued it was felt that the overprint did not show up distinctly. The printers suggested that red ink be used for these values; red overprints were on sale on 1st April 1922 (6). Carmine overprints did not appear before July, yet must have been printed prior to 12th June [Editor's note: only if it is assumed that Dollard did the printing of these]. According to the printer the carmine shade was due to the plates being inked two or three times before printing (13). J.Foley, however, is convinced that two distinct shades were used red and carmine, and notes that the red is found in varying intensities (14).

H.Zervas records the red overprints in Setting 2 and in a composite plate of alternate Setting 1 and 3 stereos. The latter gives the possibility of finding Setting 1/Setting 3 pairs and Setting 3/Setting 1 pairs (6). Kohl lists a Setting 1 plate as well as the Setting 2 and composite plate (13).

The printers said that the mixture of settings was due to the replacement of worn out or damaged stereos. In view of the regular alternation of the stereos this seems unlikely. The combination plate is found on all three red overprinted values (13).

Quantities Printed. The total number of sheets overprinted by Dollard is given by Freeman and Stubbs and by Meredith (16) as follows: ½d (43,000), 1d (112,000), 2½d black (1502), 2½d red (1298), 3d (6500), 4d black (1702), 4d red (1798), 5d (2100), 9d black (2398), 10d (900).

4. Proofs and Essays of the Dollard Overprint.

Essay. The bid submitted on February 2nd 1922 by Dollard included a sample of the proposed overprint. This was said to include a hyphen between the h and the É of hÉireann, and if in existence should be considered as an essay (6).

Proofs. Proofs of the Dollard overprint were produced in red, carmine or black ink on white or coloured paper. Some are stamped on the reverse in pale violet in large or small type "Original proof, Dollard, 17.2.22" and initialled B.J.B. (B.J.Brennan, the Dollard Manager) (1). It is doubtful if they were true proofs taken before overprinting, but were probably philatelic proofs produced for a Dublin stamp dealer with the connivance of Dollards. Proofs are listed in all three settings with the various types of handstamp and ink colours (8). An unusual block of 8 proofs in dark blue was sold in auction in 1959; [Editor's note the block was one of 12 and has reappeared in auction since] this was likely to be genuine since it was signed by the Stores Department of the GPO. A half sheet signed "Genuine Proofs / For Dollard, Printing House, Dublin Ltd / B.J.Brennan / Manager / June 14th 1922" was dated two days after Dollard ceased overprinting and must have been done for philatelic purposes (6). Complete sheets of proofs have been seen in the Agnew and Vesey collections (8). A variety with a vertical unprinted strip has also been seen (15). Meredith considered only the backstamped proofs to be genuine (16).

Connection between Dollard and Thom. Evidence of a connection between Dollard and Thom [Editor's note: Thom was the other company who, initially, overprinted stamps for the Irish Free State Post Office at the same time as Dollard] is indicated by Thom proofs backstamped "Original / Proof / Supplied by / Thom to / Dollard / 17.2.22" in the identical typeface used in the Dollard backstamp and another in Brennan's distinctive hand "Original / Proof / received / from / Thom / by / Dollard / B.J.B." (17). Brennan had a connection with F.F.Freeman and T.T.Stubbs, authors of Handbook of Provisional Issue Irish Free Stamps which was published by the Mint Stamp Company in April 1922, and he possibly provided the illustrations for the Thom and Dollard overprints in that book (12).

Overprint in red on the ½d value. Proofs of the Dollard overprint on the ½d value also exist with the same backstamp on the reverse as the plain paper proofs, although the colour of the backstamp is rose purple. A 3x2 corner block of this proof has been seen with the late control S22. It was probably made in connection with the changeover to red overprinting on April 1st 1922. Examples without the backstamp may be printers waste (7). There seems to have been more than one sheet of these stamps on the market: they may also be ascribed to the connection of Dollard with a Dublin stamp dealer (6). The colour is described as vermilion by Meredith (16).

5. Varieties.

Errors in the British stamp. In the values overprinted by Dollard the engraving errors listed in the catalogue are as follows: 4d Break over FOUR (Row 19 Stamp 2), Breaks under FOUR (Row 5 Stamp 12), Broken crossbar of 4 (Row 19 Stamp 4), 9d PQSTAGE (Row 3 Stamp 1), 10d Broken frame line (Row 9 Stamp 1). In addition inverted watermarks are found on the 1d and the watermark reversed on the 5d (18). The QNE 1d has been noted on the Dollard issue at Row 20 Stamp 10 (19).

The Breaks under FOUR variety is associated with a damaged frame (20) and an earlier stage shows 9 breaks instead of 10 (4). A diagonal break over the U may also be found on the Break over FOUR variety (21). A damaged scroll is recorded on the left side of the ½d, position unknown (22).

A detailed study of the 10d broken frame line variety has been made, indicating stages in the flaw and a position on Stamp 12, row unknown (23).

Inverted and doubled overprints. During March 1922 three sheets of the ½d were discovered with inverted overprint in the GPO in Dublin. They were ordered to be destroyed but one sheet and part of another had already been sold over the counter. The overprints of these sheets are all shifted to the right (24). The legitimacy of this variety seems to be established by a letter from the Postmaster General, although the letter admits to only one sheet (25).

One sheet of the 1d value is supposed to have been sold in Dublin with the overprint shifted to the left and at least four sheets with well centred overprints came from unofficial channels, most with Control S22 (13). This value is also illustrated shifted towards the bottom (24). The ½d value is noted as being from Setting 1 and the 1d from Setting 2 (8).

A lightly doubled overprint of the 1d value has been seen caused by shifting of the sheet in the press (13).

Misplaced overprints. Improper feeding of the sheets of unoverprinted stamps into the press resulted in some cases to the date appearing wholly or partly on the next stamp below or Rialtas on the next stamp above (26). One sheet received no overprint on the six right hand stamps of each row, while the gutter and the bottom margin received 12 overprints. Examples of stamps from this sheet show staining (13). A list of the vertical misplacements compiled from Meredith is given in Supplement 16 (26), and are illustrated also by Perry Adams (27).

- | | |
|--|---|
| (1) Ir, Phil, Sep 69 pp 42-46, V. Linnell | (14) Rev, Jul 74 p 933 J. Foley |
| (2) Rev, Jan 76 p 1049, Kohl's Handbook tr. H. Zervas | (15) Rev, Jul 73 p 855, J. Brady |
| (3) Rev, Nov-Dec 55 p 243, P. Adams | (16) Rev, Apr 78 p 61-66 W. Meredith |
| (4) Ir, Phil, Dec 78 p 75-77, C.I. O'Ulin & P.H. Williams | (17) Rev, Mar-Apr 55 p 208, 212, 214, P. Adams |
| (5) Rev, Jan-Feb 58 p 350, Editor | (18) Stamps of Ireland Spec. Cat. 1987,
MacDonnell Whyte |
| (6) Rev, Supp, 21 Jun 65 p 89-96, H. Zervas | (19) Ir, Phil, Jun 87 p 26, P.H. Williams |
| (7) Rev, Apr 76 p 1076-1080, Kohl's Handbook tr. H. Zervas | (20) Ir, Phil, Dec 75 p 75 C.I. O'Ulin |
| (8) Rev, Supp, 12 Jul-Aug 63 p 45-48, H. Fletcher | (21) Rev, Oct-Dec 66 p 640-641, G. Brady |
| (9) Rev, Winter 72 (actually 71) p 802-805, Editor | (22) Rev, Jan 80 p 47, J. Howley |
| (10) Rev, Jan-Mar 69 p 687-692, M.H. Priestley | (23) Rev, Apr-Jun 67 p 647, 649, G. Brady |
| (11) Rev, Winter 70-71 p 752-753, M.H. Priestley | (24) Rev, Apr-Jun 57 p 316-317, J. Walsh |
| (12) Rev, Apr-Jun 65 p 602, J. Foley | (25) Rev, Supp, 14 Jan-Feb 64 p 57-60, Editor |
| (13) Rev, Jul 76 p 1088-1091, Kohl's Handbook tr H. Zervas | (26) Rev, Supp, 16 Apr 64 p 65-68, Editor |
| | (27) Rev, Mar-Apr 56 p 261-262, P. Adams |

DOLLARD SETTINGS

Varieties V1a to V1n arise due to variations in line alignment, which is encountered with overprints from **Settings 2 & 3**. With individual stamps it is not always possible to determine the setting, as many variants are replicated with both settings.

Setting 1 by Dollard was accurately aligned and the relative alignment positions are taken as normal.

3 x 5 Stereos from Settings 2 & 3 also display normal alignments, five with Setting 2 and three with Setting 3.

OVERPRINT VARIANTS SETTINGS 2 AND 3

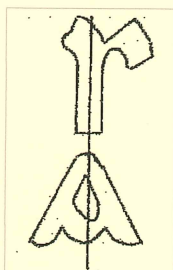
SETTING 2 (3 x 5 Stereo)

G (V1j/V2j)		A + I (V1h/V2h)
B (V1k/V2k)	A (V1a/V2a)	
		A + C (V1c/V2c)
	A (V1a/V2a)	A + D + E (V1f/V2f)
E (V1m/V2m)	B + E (V1i/V2i)	A + C/D (V1d/V2d)

SETTING 3 (3 x 5 Stereo)

A + H (V1g/V2g)	A (V1a/V2a)	A + J (V1i/V2i)
B (V1k/V2k)	A (V1a/V2a)	B + E (V1i/V2i)
C + F (V1n/V2n)		
	A + B (V1b/V2b)	A + D + E (V1f/V2f)
A + E (V1e/V2e)	B + E (V1i/V2i)	A + C/D (V1d/V2d)

'R' over 'Se'



*'V' references, as highlighted under Dollard low value issues - Sets 1T and 2T.

ALIGNMENT LINES 1 & 2

ALIGNMENT LINES 2 & 3

Normal	(A)	Normal	(B)	(C)	(D)
R	R	I	I	I	I
Se	Se	nA	nA	nA	nA
'R' over 'e'	'R' over 'Se'	'I' over 'n' of 'nA'	'I' over left shank of 'n' of 'nA'	'I' over right shank of 'n' of 'nA'	'I' over 'nA'

(A) 'R' over 'Se' can be determined by the positioning of the long stroke of the 's' in 'Rialtas' being almost vertically over, or slightly to the left of the top (centre point) of the second 'a' in 'Sealadac', see diagram above.

ALIGNMENT LINES 4 & 5

LINES 1,2,3

LINES 1,3

LINE 2

Normal	(E)	(F)	(G)	(H)	(I)	(J)
i	éi	ir	R n c	R n	Sealadac	Sealada^c
1	1	1	Diagonal cut to upright of 'R' in 'Rialtas' and first leg of 'n' of 'nA'. Damaged top to 'c' in 'Sealadac'	Diagonal cut to upright of 'R' in 'Rialtas' and first leg of 'n' of 'nA'	Raised 'c' in 'Sealadac' (Slight)	Raised "c" in "Sealadac"
'I' over '1'	'éi' over '1'	'ir' over '1'				

The collection which follows was assembled by Arthur Stokes the main focus being type & letter variants associated with the Dollard issues. Following acquisition of the collection by Barry Cousins an attempt has been made to cross reference the variants to studies undertaken by V. A. Linnell (Overprint lines 1 to 4) & Michael Priestley (Line 5 '1922')
Line alignment variants V1a to V1n are also notated, if discernable. The above detail being taken from the 'Compendium' published by Barry Cousins, President of the Irish Philatelic Circle 2011 to 2013.

This volume contains Dollard Stamps, which display minor letter varieties / flaws which was originally assembled by the late Arthur Stokes. It is understood that this part collection was gifted by Arthur, sometime in the 1970's. It is further understood that this collection passed through at least two hands, before being taken up by the late Barry Threfall.

The collection being part of Threfall's estate was auctioned in July 2011 by MacDonnell Whyte and acquired by Barry Cousins.

This volume contains only stamps overprinted by Dollard, the other parts of Arthur's collection are now with Barry Cousins, including stamps with letter flaws, from the Thom 5 line and 3 line issues.

This page and the page which follows, are retained for reference, in the clear handwritten style used by Arthur Stokes.

This volume has been reset by Barry Cousins, using computers as an aid and for reference takes into account studies undertaken by V. A. Linnell and Michael Priestley.

Ireland.

Overprints of 1922.

Dollard printing.

Multiple varieties.



First "A" and "r" of "Rialtaí" :- A & P.

Second "A" and "C" of "Sealadaic" :- A & C.

Second "E" of "hÉireann" :- e.



Straight transverse line from "e" of "Sealadaic"

through "l" & "o" of "Rialtaí."

Rounded centre of second "a" of "Rialtaí."



Defects in first, third, fourth, sixth, & seventh letters of "Rialtaí."

Defects in first, third, fourth letters of "Sealadaic" with only faint trace of "dot" over final "c".

Defect in "a" of "hÉireann."



Ireland.

Overprints of 1922.

Dollard printing.

Multiple varieties.



Circular flaw in top-left of "R", with
Broken "c" and short "r" in "Rialtaí."
Ends of "e" joined and not joined to "c" in
"Sealadóic."
Curved centre of 1st "n" and thin break in 2nd
"n" of "Éireann."



Broken curve and foot of "R", and
flaw in right side of "l" in "Rialtaí."
Flaws in first and third "a", and in
left curve of "c", of "Sealadóic."
Flaws in "r" and "a" of "Éireann."
Enlarged circular portion of "g", with
small break at left, of "1922."



In "Rialtaí":
Damaged curve in "R", with damage
in first "a", "c" and "r":
In "Sealadóic":
Damaged curve of "e", missing cross-stroke
of first "a", damaged apex of third "a".
In "Éireann":
Damaged right side of "a".



DOLLARD - STAMP & OVERPRINT VARIETIES.
BASIC DATA TAKEN FROM STUDIES CONDUCTED BY ARTHUR STOKES

STAMP COLOUR SHADES & OVERPRINT INK VARIANTS



T2 (SG 2) Scarlet (fu)
Normal Black Overprint



T2GB (SG3) Carmine - Red (fu)
Greyish - Black Overprint



T2 (SG 2) Scarlet (fu)
Normal Black Overprint



T2GB (SG 2) Scarlet (fu)
Greyish - Black Overprint

SLANTING OVERPRINT & LINE ALIGNMENT VARIETIES



T1/UF1sa (fu)
Overprint slanting upwards to the right
V1c - 'R' over 'Se' & 'l' over right shank of 'n' of 'nA'



T1/UF1sa (fu)
Left Stamp Overprint slanting upwards to the right
(pair from two stereos)
V1c - 'R' over 'Se' & 'l' over right shank of 'n' of 'nA'



T2/UF1sa (fu)
Overprints slanting upwards to the right
(pair from one stereo)
Left Stamp V1k - 'l' over left shank of 'n' in 'nA'
Right Stamp V1a - 'R' over 'Se'

DOLLARD - STAMP & OVERPRINT VARIETIES.
BASIC DATA TAKEN FROM STUDIES CONDUCTED BY ARTHUR STOKES

OVERPRINT SHIFTS



T1 / UF1s (fm)
Overprint shift to right



T1 / UF1s (fu)
Overprint shift to right
Overprint light / fine impression



T1 / UF1s (fu)
Overprint shift to right



T3 / UF1s (fu)
Overprint shift to right



T2g Strip of three stamps (umm)
Overprint shift to the left, part two overprints on each stamp
Marginal Stamp variants
DL4/C42 Shortened 'i' of 'hEireann'
DL5/02V - Break in lower part of loop of '9' in '1922'



T1 / UF1t (fu)
Left Stamp
Shattered overprint of 'Rialtas'
V1c - 'R' over 'Se' & 'l' over right shank of 'n' in 'nA'

DOLLARD - STAMP & OVERPRINT VARIETIES.
BASIC DATA TAKEN FROM STUDIES CONDUCTED BY ARTHUR STOKES

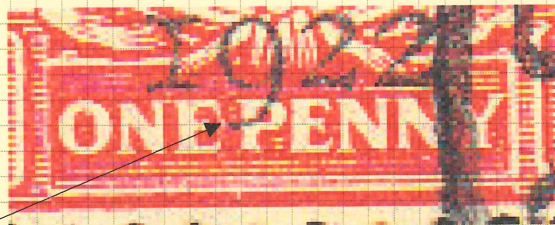
STAMP FLAWS



T2GB(fu)
 Scarlet / Black Overprint
 'ONE' in value tablet shows 'E' with
 downward spur from the upper bar



T2GB (fu)
 Scarlet / Greyish - Black Overprint
 'ONE' in value tablet shows 'E' with
 downward spur from the upper bar



T2 (fu)
 Scarlet / Black Overprint
 Left Stamp 'ONE' in value tablet shows 'E'
 with spurs from the upper and lower bars



T2GB (fu)
 Scarlet / Greyish - Black Overprint
 'ONE' in value tablet shows 'E' with small
 downward spur from the centre bar



T2 (fu)
 Scarlet / Black Overprint
 'PENNY' in value tablet shows small 'fishtail'
 projection from base of 'P' on left



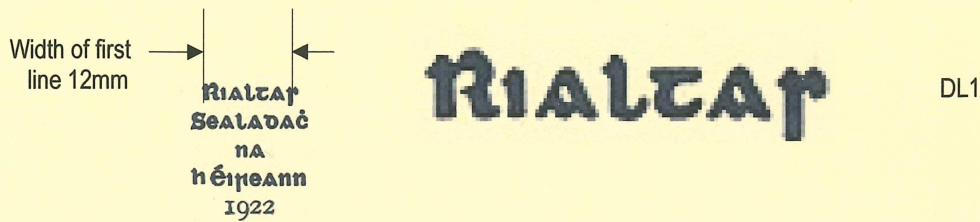
T2 (fu)
 Scarlet / Black Overprint
 Lower Stamp
 'PENNY' in value tablet shows small 'fishtail'
 projection from base of 'P' on left



T2 (fu)
 Scarlet / Black Overprint
 'PENNY' in value tablet shows small 'fishtail'
 projection from base of 'P' on left & small
 projection top left

OVERPRINT FIRST LINE 'Rialtas'

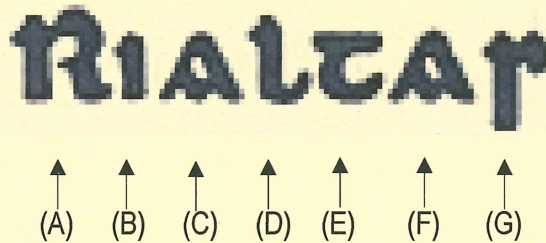
DOLLARD ISSUES 1T & 2T



NOTATIONS USED to identify VARIETIES and FLAWS (in brackets)

FIRST LINE Dollard (DL1)

LETTERS



Alpha letters used in sequence to identify each letter of the first line overprint.

IDENTIFICATION of VARIETIES and FLAWS found with each of the FIRST LINE LETTERS

Numerals from (1) onwards used, extent being dependent on the number of variants identified..

In the case of the Dollard variants, the basis for identification are the numeric allocations assigned by V. A. Linnell in 1974 & 1975 issues of 'The Revealer'.

As an example the first letter 'R' with the left side of the upright sliced and with no serif on the Dollard 1/2d value shown, will be referenced : T1/DL1/A9.



Alignment Varieties

Left Stamp V1l - 'l' over left shank of 'n' of 'nA' & 'ei' over '1'

Right Stamp V1d - 'R' over 'Se' & 'l' over right shank of 'n' in 'nA'



T1 /DL1/A9

Stamp 'T' reference, from the 'Compendium'.

In cases where the variety is listed in the 'Compendium', then this reference will also be added.

Any drawings reproduced are in the main taken from the hand drawn sketches by V. A. Linnell.

For added clarity the variant identifier is prefixed by the

Whilst this study is mainly focused on type variants, in cases where varieties occur due to line alignments, arising from Dollard Settings 2 & 3, then wherever possible these will be highlighted.

Varieties being V1a to V1n for Issue 1T and V2a to V2n for Issue 2T.

DOLLARD FIRST LINE FLAWS to 'R' of 'Rialtas'

(Flaw representations vary in both quality & accuracy, allocations in study are therefore the nearest equivalent)



NORMAL

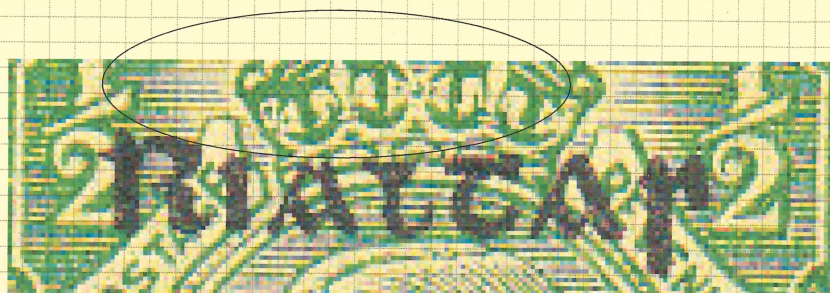
**DOLLARD - FIRST LINE TYPE VARIETIES.
BASIC DATA TAKEN FROM STUDIES CONDUCTED BY ARTHUR STOKES**

OVERPRINT VARIETIES, FIRST LINE 'Rialtas'

RIALTAS

DOLLARD - ISSUES 1T, 2T

DOLLARD PRINTING - VARIETIES & FLAWS



T1 DL1/UF1t (fm)

Curved flaw through top of 'Rial' of 'Rialtas'
F1e - Mis-shaped 'I' with cross stroke DL1/D4



T1 DL1/UF1t (fu)

Right Stamp - Curved flaw through top of 'Rial' of 'Rialtas'
F1e - Mis-shaped 'I' with cross stroke DL1/D4



T3 DL1/UF1t (fm)

Curved flaw through top of 'Rial' of 'Rialtas'
F1e - Mis-shaped 'I' with cross stroke DL1/D4



Left Stamp - Broken 'S' in 'Sealadac' DL2/A33

Right Stamp - Flaw as above &
DL5/02H Upper break in right curve of '9'



T1 DL1/UF1t (fu)

Hollow impression of 'R' in 'Rialtas'
& break in é of 'héireann' DL4/B56



T2 DL1/UF1t (fu)

Hollow impression of 'R' in 'Rialtas'
& break in é of 'héireann' DL4/B56



T2 DL1/UF1t (fu)

Hollow impression of 'R' in 'Rialtas'
& break in é of 'héireann' DL4/B56

DOLLARD - FIRST LINE TYPE VARIETIES.
BASIC DATA TAKEN FROM STUDIES CONDUCTED BY ARTHUR STOKES

OVERPRINT VARIETIES, FIRST LINE 'Rialtas'

RIALTAZ

DOLLARD - ISSUES 1T, 2T

DOLLARD PRINTING - VARIETIES & FLAWS to 'R' of 'Rialtas'



T1 / UF1t DL1/ A1 (fu)
 Left Stamp - Indent left side of upright of 'R', above base



T2 / V1j DL1/ A2 (fu)
 Diagonal cut to base of upright of 'R', also cut to 'n' of 'nA'.
 'c' of 'Sealadac' often damaged



T2 / V1j DL1/ A2 (fu)
 Diagonal cut to base of upright of 'R', also cut to 'n' of 'nA'.
 'c' of 'Sealadac' often damaged



T2 / UF1t DL1/ A1 (fu)
 Left Stamp - Indent left side of upright of 'R', above base



T1 / V1j DL1/ A6 (fm)
 Major irregularity to outer top curve of 'R'
 V1j - Diagonal cut to base of upright of 'R', also cut to 'n' of 'nA'.
 F1a - colon for 'i' in 'Rialtas' DL1/B12
 DL5/04F Break in upper curve of 2nd '2'



T1 / V1j DL1/ A7 (fu)
 Major irregularity to outer top curve of 'R'
 & with spur
 Left Stamp
 V1j - Diagonal cut to base of upright of 'R', also cut to 'n' of 'nA'.



T2 / V1j DL1/ A6 (fu)
 Major irregularity to outer top curve of 'R'
 V1j - Diagonal cut to base of upright of 'R', also cut to 'n' of 'nA'.



T1 / UF1t DL1/ A9 (fu)
 Left upright of 'R' sliced & with no serif
 Left Stamp V1l - 'l' over left shank of 'n' of 'nA' & 'ei' over '1'
 Right Stamp 'R' over 'Se' & 'l' over 'nA' - V1d



T2 / UF1t DL1/ A9 (fm)
 Left upright of 'R' sliced & with no serif



T2 / UF1t DL1/ A9 (fu)
 Left upright of 'R' sliced & with no serif
 V1c - 'R' over 'Se' & 'l' over right shank of 'n' in 'nA'



T2 / UF1t DL1/ A9 (fm)
 Left upright of 'R' sliced & with no serif



T2 / UF1t DL1/ A10 (fu)
 Curved indent in upright of 'R', top inner
 V1f - 'R' over 'Se', 'l' over 'nA' & 'ei' over '1'



T2 / UF1t DL1/ A10 (fu)
 Curved indent in upright of 'R', top inner



T2 / UF1t DL1/ A10 (fu)
 Curved indent in upright of 'R', top inner

DOLLARD - FIRST LINE TYPE VARIETIES.
BASIC DATA TAKEN FROM STUDIES CONDUCTED BY ARTHUR STOKES

OVERPRINT VARIETIES, FIRST LINE 'Rialtas'

RIALTAS

DOLLARD - ISSUES 1T, 2T

DOLLARD PRINTING - VARIETIES & FLAWS to 'R' of 'Rialtas'



T1/UF1b DL1/A13



T2/UF1t DL1/A17 (fu)
Crossbar of 'R' missing



T2/UF1t DL1/A17 (fu)
Crossbar of 'R' missing



T1/UF1t DL1/A20 (fu)
Lower right arm of 'R'
damaged & flattened



T2/UF1t DL1/A20 (fu)
Lower right arm of 'R'
damaged & flattened



T2/UF1b DL1/A13 (fu)
Left Stamp
Break in curve of 'R'



T2/UF1t DL1/A21 (fu)
Fine/thinned upper curve of 'R'



T2/UF1t DL1/A21 (fu)
Fine/thinned upper curve of 'R'



T2/UF1t DL1/A25 (fu)
Mid point break in upright of 'R'



T2/UF1t DL1/A25 (fu)
Mid point break in upright of 'R'



T2/UF1t DL1/A28 (fu)
Curved indent top left of upright



T2/UF1t DL1/A28 (fu)
Curved indent top left of upright



T5/UF1t DL1/A29 (fm)
Circular break in upright
below serif



T2/UF1t DL1/A30 (fu)
Curved indent top right of upright



T2/UF1t DL1/A30 (fu)
Curved indent top right of upright



T1/UF1t DL1/A32 (fu)
Indent outer curve of 'R'



T2/UF1t DL1/A32 (fu)
Indent outer curve of 'R'

DOLLARD - FIRST LINE TYPE VARIETIES.
BASIC DATA TAKEN FROM STUDIES CONDUCTED BY ARTHUR STOKES

OVERPRINT VARIETIES, FIRST LINE 'Rialtas'

RIALTAS

DOLLARD - ISSUES 1T, 2T

DOLLARD PRINTING - VARIETIES & FLAWS to 'R' of 'Rialtas'



T2 / UF1b DL1/ A34 (fu)
Break in curve, crossbar
& lower arm of 'R'



T1 / UF1t DL1/ A35 (fu)
Lower part of upright
of 'R' shortened



T2 / UF1t DL1/ A35 (fu)
Lower part of upright
of 'R' shortened



T1 / UF1t DL1/ A37(fu)
Serif of upright missing &
top squared



T2 / UF1t DL1/ A37(fu)
Serif of upright missing &
top squared



T2 / UF1b DL1/ A40 (fu)
Break in curve of 'R'
adjacent to upright



T2 / UF1b DL1/ A40 (fu)
Break in curve of 'R'
adjacent to upright
V1m - 'ei' over '1'



T2 / UF1b DL1/ A40 (fu)
Break in curve of 'R'
adjacent to upright
V1l - 'R' over 'Se' &
'ei' over '1'



T2 / UF1b DL1/ A40 (fu)
Break in curve of 'R'
adjacent to upright
'é' of 'héireann' distorted
& 'n' of 'nA' with flaw / break



T2 / UF1b DL1/ A40 (fu)
Break in curve of 'R'
adjacent to upright
'é' of 'héireann' distorted
& 'n' of 'nA' with flaw / break



T2 / UF1b DL1/ A41 (fu)
Right arm of 'R' with looped
leading edge from crossbar
to its base



T2 / UF1b DL1/ A42 (fu)
Circular flaw in top loop of 'R'
V1c - 'R' over 'Se' & 'l' over right
shank of 'n' in 'nA'

DOLLARD - FIRST LINE TYPE VARIETIES.
BASIC DATA TAKEN FROM STUDIES CONDUCTED BY ARTHUR STOKES

OVERPRINT VARIETIES, FIRST LINE 'Rialtas'

RIALTAS

DOLLARD - ISSUES 1T, 2T

DOLLARD PRINTING - VARIETIES & FLAWS to 'R' of 'Rialtas'



T2 / UF1b DL1/ A40 (fu)
Circular break in upper curve of 'R'



T2 / UF1b DL1/ A40 (fu)
Circular break in upper curve of 'R'



T2 / UF1b DL1/ A40 (fu)
Circular break in upper curve of 'R'



T2 / UF1b DL1/ A40 (fu)
Circular break in upper curve of 'R'



T2 / UF1b DL1/ A40 (fu)
Circular break in upper curve of 'R'



T2 / UF1t DL1/ A44 (fu)
Left Stamp - Lower right arm of 'R' distorted, with inner indent
V1t - 'c' for 'e' in 'Sealadac'
DL4/B54 - 'é' of 'héireann' with upper break
Right Stamp - DL2/H16 - Break in 'c' of 'Sealadac'



T2 / UF1t DL1/ A44 (fu)
Lower right arm of 'R' distorted, with inner indent
DL4/B54 - 'é' of 'héireann' with upper break



T2 / UF1t DL1/ A45 (fu)
Irregular indent from left of lower arm of 'R'



T2 / UF1t DL1/ A45 (fu)
Irregular indent from left of lower arm of 'R'
V1a - 'R' over 'Se'



T1 / UF1t DL1/ A46 (fu)
Circular flaw top of upright between serif and curve of 'R'



T2 / UF1t DL1/ A47 (fu)
Line flaw from upper curve of 'R' into upright



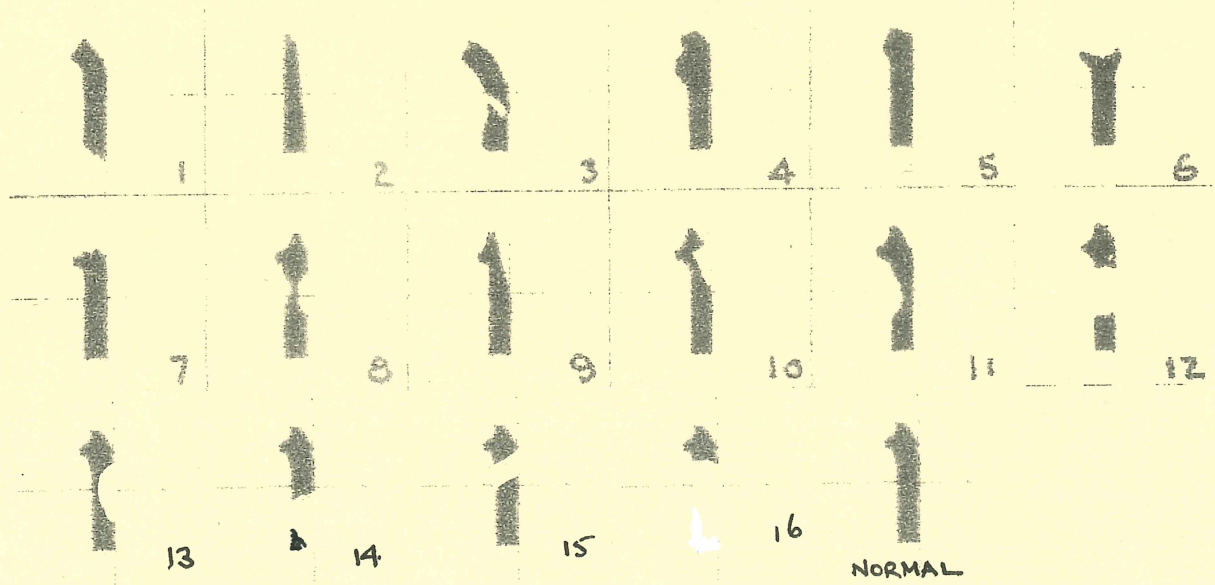
T2 / UF1t DL1/ A48 (fu)
Curved indent in lower right side of upright



T6 / UF1t DL1/ A48 (fu)
Curved indent in lower right side of upright

DOLLARD FIRST LINE FLAWS to 'i' of 'Rialtas'

(Flaw representations vary in both quality & accuracy, allocations in study are therefore the nearest equivalent)



DOLLARD - FIRST LINE TYPE VARIETIES.
BASIC DATA TAKEN FROM STUDIES CONDUCTED BY ARTHUR STOKES

OVERPRINT VARIETIES, FIRST LINE 'Rialtas'

RIALTAS

DOLLARD - ISSUES 1T, 2T

DOLLARD PRINTING - VARIETIES & FLAWS to 'i' of 'Rialtas'



T2 / UF1t DL1/ B1 (fu)
Base of upright with diagonal cut



T2 / UF1t DL1/ B6 (fu)
Shortened 'i' from top with serifs
Upper Stamp
DL2/D13 - 'i' of 'Sealadac' with indent mid right of upright



T2 / F1b DL1/ B6 (fu)
Shortened 'i' from top with serifs & 'A' broken
UF1bb - No crossbar on 2nd 'A' F24



T2 / UF1t DL1/ B6 (fu)
Shortened 'i' from top with serifs



T2 / UF1t DL1/ B6 (fu)
Shortened 'i' from top with serifs



T1 / UF1t DL1/ B11 (fu)
Curved indent from left of upright



T2GB / UF1t DL1/ B11 (fm)
Curved indent from left of upright



T2 / UF1t DL1/ B11 (fu)
Curved indent from left of upright

Greyish Black Overprint



T1 / F1a DL1/ B12 (fu)
Two dots (colon) for 'i'



T1 / F1a DL1/ B12 (fu)
Two dots (colon) for 'i'



T2 / F1a DL1/ B12 (fu)
Two dots (colon) for 'i'



T2 / F1a DL1/ B12 (fu)
Two dots (colon) for 'i'



T2 / F1a DL1/ B12 (fu)
Two dots (colon) for 'i'
Right Stamp V1a - 'R' over 'Se'



T4 / F1a DL1/ B12 (fu)
Left Stamp Two dots (colon) for 'i' & DL1/E23 damage to 'r'
Centre Stamp 'i' damaged DL2/D19 & 'c' damaged DL2/H15
Right Stamp 'S' damaged DL2/A49

E40

DOLLARD - FIRST LINE TYPE VARIETIES.
BASIC DATA TAKEN FROM STUDIES CONDUCTED BY ARTHUR STOKES

OVERPRINT VARIETIES, FIRST LINE 'Rialtas'

RIALTAS

DOLLARD - ISSUES 1T, 2T

DOLLARD PRINTING - VARIETIES & FLAWS to 'i' of 'Rialtas'



T1 Block (fu)
 Stamp top right - DL1/B13
 Curved indent in right side of upright
 & DL1/F1- 2nd 'A' of Rialtas' blotted
 Stamp top left - V1j
 Diagonals of 'R' & 'n' cut and 'c' damaged
 Stamp bottom left - V1k
 'i' over left shank of 'n'
 Stamp bottom right - V1a
 'R' over 'Se'



T1/UF1t DL1/B13 (fu)
 Curved indent in right side of upright



T1/UF1t DL1/B13 (fu)
 Curved indent in right side of upright
 V1f - 'R' over 'Se', 'i' over 'nA' & 'ei' over '1'



T1/UF1t DL1/B13 (fu)
 Curved indent in right side of upright



T1/UF1t DL1/B13 (fu)
 Curved indent in right side of upright



T1/UF1t DL1/B14 (fu)
 'i' shortened from the bottom, with only a trace of the base showing



T1/UF1t DL1/B14 (fu)
 'i' shortened from the bottom, with only a trace of the base showing



T3/UF1t DL1/B14 (fm)
 'i' shortened from the bottom with only a trace of the base showing



T1/UF1t DL1/B15 (fu)
 Diagonal cut in upright



T2/UF1t DL1/B15 (fu)
 Diagonal cut in upright
 V1f - 'R' over 'Se', 'i' over 'nA' & 'ei' over '1'



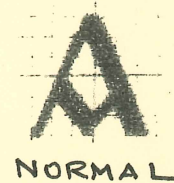
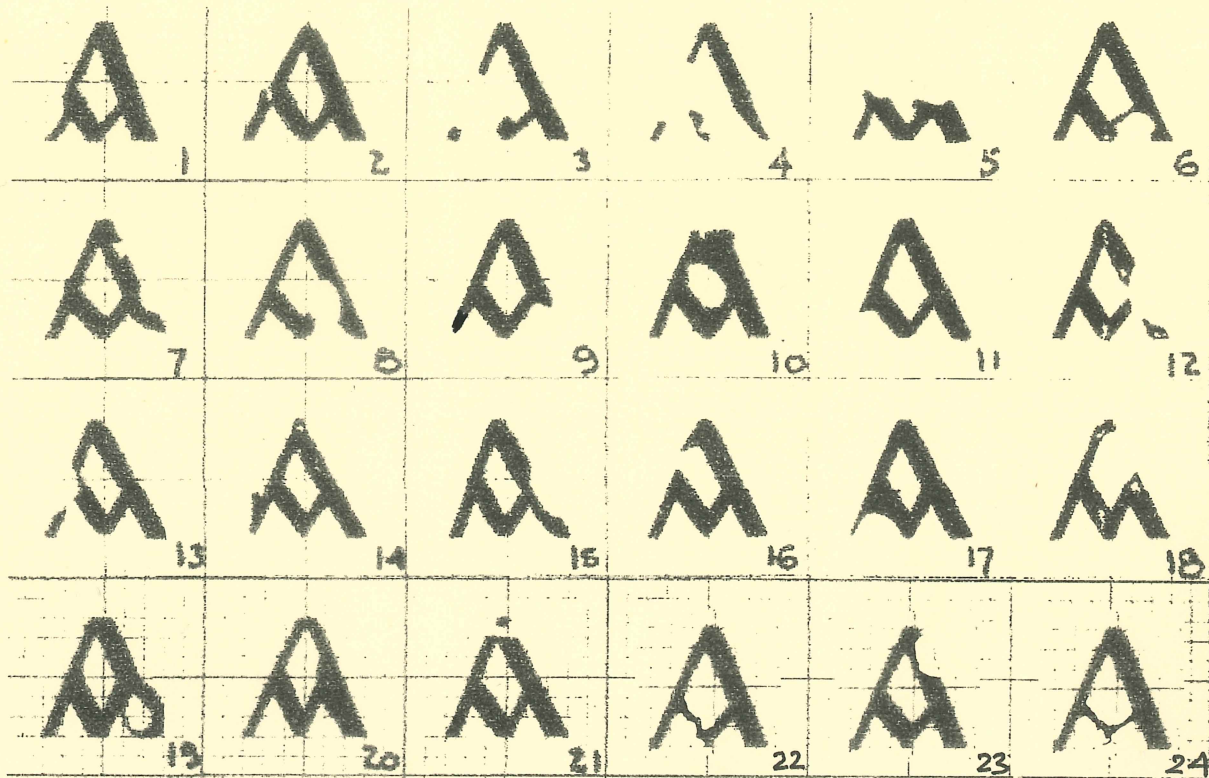
T2/UF1t DL1/B15 (fu)
 Diagonal cut in upright
 V1c - 'R' over 'Se', 'i' over right shank of 'n'



T2/UF1t DL1/B16 (fm)
 'i' shortened from the bottom, & with no outline of base

DOLLARD FIRST LINE FLAWS, first 'a' of 'Rialtas'

(Flaw representations vary in both quality & accuracy, allocations in study are therefore the nearest equivalent)



DOLLARD - FIRST LINE TYPE VARIETIES.
BASIC DATA TAKEN FROM STUDIES CONDUCTED BY ARTHUR STOKES

OVERPRINT VARIETIES, FIRST LINE 'Rialtas'

RIALTAS

DOLLARD - ISSUES 1T, 2T

DOLLARD PRINTING - VARIETIES & FLAWS to the first 'a' of 'Rialtas'



T2 / UF1t DL1/ C3 (fu)
Break in left arm & crossbar of 'a' damaged



T2 / UF1t DL1/ C3 (fu)
Break in left arm & crossbar of 'a' damaged



T2 / UF1t DL1/ C3 (fu)
Break in left arm & crossbar of 'a' damaged



T2 / UF1t DL1/ C11 (fu)
Left arm of 'a' missing from crossbar



T2 / UF1t DL1/ C3 (fu)
Break in left arm & crossbar of 'a' damaged



T2 / UF1t DL1/ C11 (fu)
Left arm of 'a' missing from crossbar



T2 / UF1t DL1/ C9 (fu)
Left & right arms of 'a' cut & damaged below the crossbar



T1 / UF1t DL1/ C12 (fu)
Curved indent/break in right arm adjacent to crossbar



T2 / UF1t DL1/ C12 (fu)
Curved indent/break in right arm adjacent to crossbar



T2GB / UF1t DL1/ C12 (fu)
Curved indent/break in right arm adjacent to crossbar
Greyish Black overprint ink



T2 / UF1t DL1/ C12 (fu)
Curved indent/break in right arm adjacent to crossbar
Left Stamp V1e - 'R' over 'Se' & 'ei' over '1'
Right Stamp V1l - 'l' over left shank of 'n' & 'ei' over '1'



T2 / UF1t DL1/ C12 (fu)
Curved indent/break in right arm adjacent to crossbar

DOLLARD - FIRST LINE TYPE VARIETIES.
BASIC DATA TAKEN FROM STUDIES CONDUCTED BY ARTHUR STOKES

OVERPRINT VARIETIES, FIRST LINE 'Rialtas'

RIALTAS

DOLLARD - ISSUES 1T, 2T

DOLLARD PRINTING - VARIETIES & FLAWS to the first 'a' of 'Rialtas'



T2 / UF1t DL1 / C16 (fu)
Break in left arm above crossbar



T2 / UF1t DL1 / C17



T2 / UF1t DL1 / C16 (fu)
Break in left arm above crossbar



T2 / UF1t DL1 / C18 (fu)
Break in right arm above crossbar



T2 / UF1t DL1 / C22 (fu)
Left crossbar of 'a'
distorted



T2 / UF1t DL1 / C22 (fu)
Left crossbar of 'a'
distorted



T2 / UF1t DL1 / C23 (fu)
Indent in right arm of 'a'
above crossbar



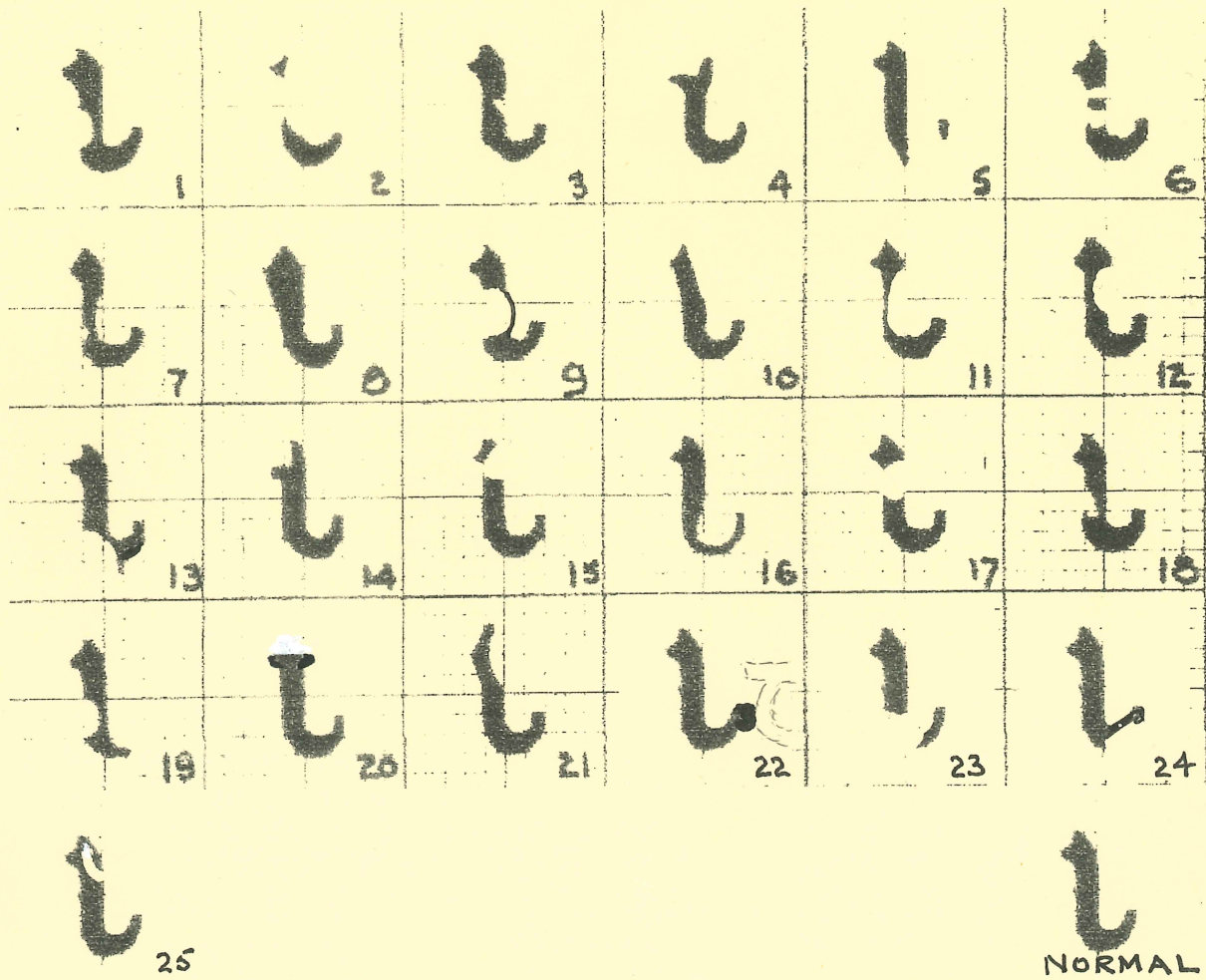
T2 / UF1t DL1 / C23 (fu)
Indent in right arm of 'a'
above crossbar



T1 / UF1t DL1 / C23 (fu)
Both crossbars of 'a'
thinned & distorted

DOLLARD FIRST LINE FLAWS, in 'l' of 'Rialtas'

(Flaw representations vary in both quality & accuracy, allocations in study are therefore the nearest equivalent)



DOLLARD - FIRST LINE TYPE VARIETIES.
BASIC DATA TAKEN FROM STUDIES CONDUCTED BY ARTHUR STOKES

OVERPRINT VARIETIES, FIRST LINE 'Rialtas'

RIALTA

DOLLARD - ISSUES 1T, 2T

DOLLARD PRINTING - VARIETIES & FLAWS to 'l' of 'Rialtas'



T2 / UF1t DL1/ D1 (fu)
 Curved indent lower left side of upright
 V1e - 'R' over 'Se' & 'ei' over 'l'



T2 / UF1t DL1/ D2 (fu)
 Break / distorted top of upright of 'l'



T1 / UF1t DL1/ D5 (fu)
 Break in lower curve of upright



T1 / UF1t DL1/ D5 (fu)
 Break in lower curve of upright



T2 / UF1t DL1/ D5 (fu)
 Break in lower curve of upright
 Left Stamp V1b
 'R' over 'Se' & 'l' over left shank of 'n'
 Right Stamp V1f
 'R' over 'Se', 'l' over 'nA' & 'ei' over 'l'



T1 / UF1t DL1/ D9 (fu)
 Large break midway left upright, joined with curved ink flaw



T2 / UF1t DL1/ D10 (fu)
 Upright sloping to the left



T2 / UF1t DL1/ D11 (fu)
 Large curved indent in upright from the right



T2 / UF1t DL1/ D11 (fu)
 Large curved indent in upright from the right



T2 / UF1t DL1/ D12 (fu)
 Curved indent top of upright from the right



T2 / UF1t DL1/ D13 (fu)
 Indent to lower left side of upright
 V1c - 'R' over 'Se' & 'l' over right shank of 'n'
 DL2/C10 - First 'a' break in left arm
 DL2/H40 - 'c' distorted



T2 / UF1t DL1/ D13 (fu)
 Indent to lower left side of upright
 V1c - 'R' over 'Se' & 'l' over right shank of 'n'
 DL2/C10 - First 'a' break in left arm
 DL2/H40 - 'c' distorted



T2 / UF1t DL1/ D13 (fu)
 Indent to lower left side of upright
 V1m - 'ei' over 'l'

**DOLLARD - FIRST LINE TYPE VARIETIES.
BASIC DATA TAKEN FROM STUDIES CONDUCTED BY ARTHUR STOKES**

OVERPRINT VARIETIES, FIRST LINE 'Rialtas'

RIALTAS

DOLLARD - ISSUES 1T, 2T

DOLLARD PRINTING - VARIETIES & FLAWS to 'l' of 'Rialtas'



T2/F1c DL1/D15 (fu)
Break near top of upright.
Dot / Dash over
shortened upright



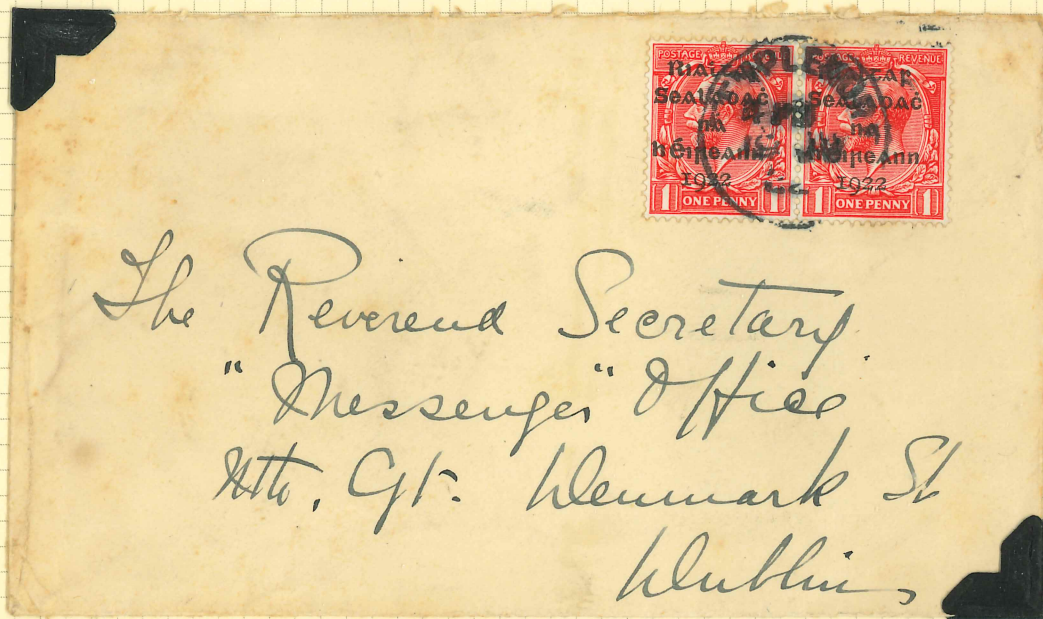
T2/F1c DL1/D15 (fu)
Break near top of upright.
Dot / Dash over
shortened upright



T2/F1c DL1/D15 (fu)
Break near top of upright.
Dot / Dash over
shortened upright



T2/F1c DL1/D15 (fu)
Break near top of upright.
Dot / Dash over shortened upright
V1b - 'R' over 'Se' & 'l' over left
shank of 'n'



T2/F1c DL1/D15 (fu)
Break near top of upright. Dot / Dash over shortened upright
Left Stamp V1k - 'l' over left shank of 'n'. Right Stamp V1a - 'R' over 'Se'



T2/F1c DL1/D17(fu)
Break in upright.
Dash over shortened upright



T2/F1c DL1/D17(fu)
Break in upright.
Dash over shortened upright



T2/F1c DL1/D17(fu)
Break in upright.
Dash over shortened upright

DOLLARD - FIRST LINE TYPE VARIETIES.
BASIC DATA TAKEN FROM STUDIES CONDUCTED BY ARTHUR STOKES

OVERPRINT VARIETIES, FIRST LINE 'Rialtas'

RIALTAS

DOLLARD - ISSUES 1T, 2T

DOLLARD PRINTING - VARIETIES & FLAWS to 'l' of 'Rialtas'



T1 / UF1t DL1/ D16 (fu)
Lower curve of upright
thinned



T2 / UF1t DL1/ D16 (fu)
Lower curve of upright
thinned



T2 / UF1t DL1/ D22 (fu)
Lower curve joined by ink
flaw to 't'



T2 / UF1t DL1/ D23 (fu)
Break in lower upright and
curve of 'l'



T2 / UF1t DL1/ D24 (fu)
Curve straight angled and
thinned



T2 / UF1t DL1/ D25 (fu)
Upward curved inclusion
from top right of upright

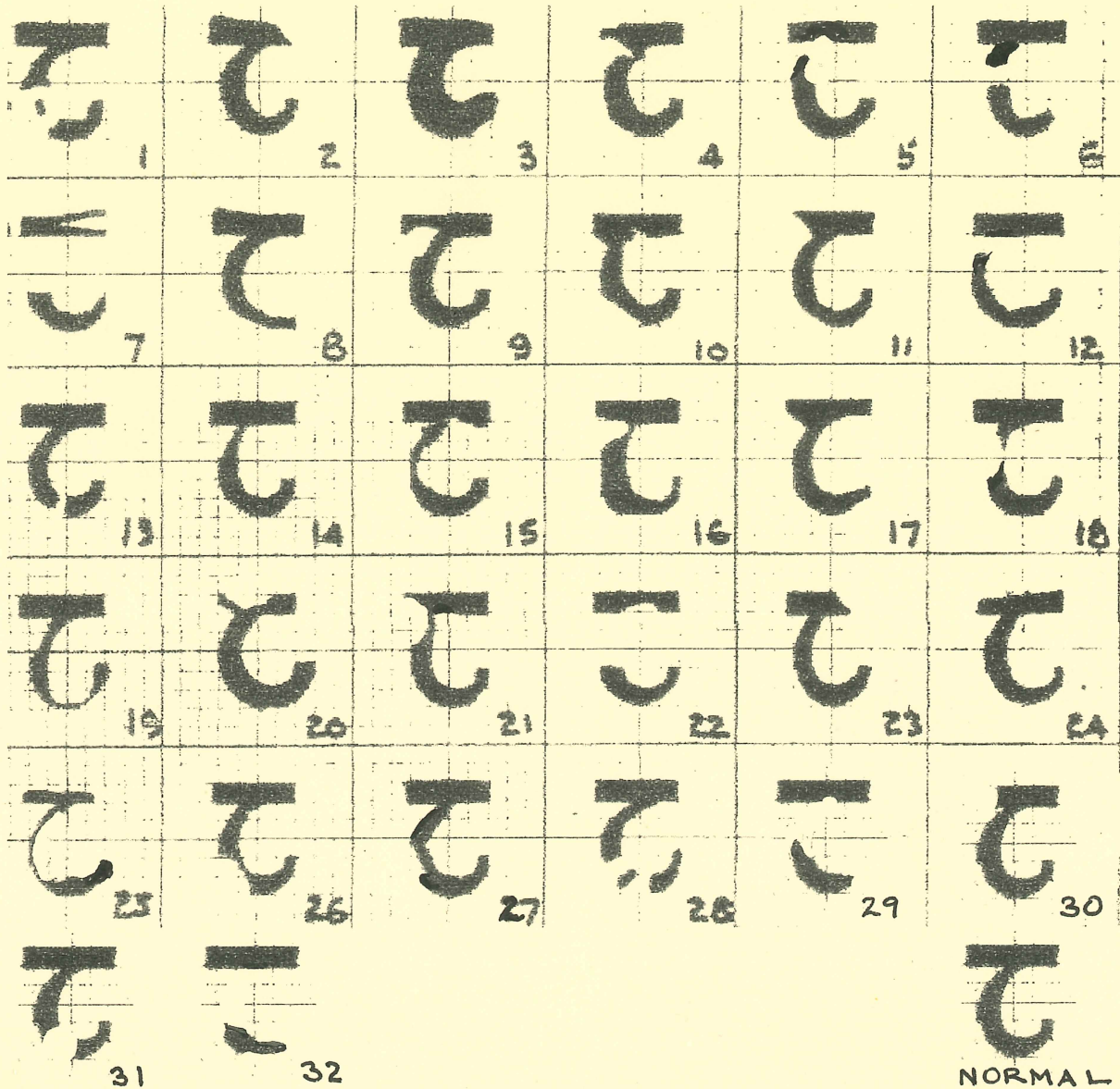


Vla 'R' over 'se'

T1 DL1/ D15

DOLLARD FIRST LINE FLAWS, in 't' of 'Rialtas'

(Flaw representations vary in both quality & accuracy, allocations in study are therefore the nearest equivalent)



DOLLARD - FIRST LINE TYPE VARIETIES.
BASIC DATA TAKEN FROM STUDIES CONDUCTED BY ARTHUR STOKES

OVERPRINT VARIETIES, FIRST LINE 'Rialtas'

RIALTAS

DOLLARD - ISSUES 1T, 2T

DOLLARD PRINTING - VARIETIES & FLAWS to 't' of 'Rialtas'



T2 / UF1t DL1/ E5 (fu)
 Curve distorted, break below top of 't' & small indent in crossbar
 DL1/93



T2 / UF1t DL1/ E6 (fu)
 Break midway in downward curve of 't'
 V1a 'R' over 'Se'



T1 / UF1t DL1/ E12 (fu)
 Small break in curve of 't' below crossbar



T2 / UF1t DL1/ E15 (fu)
 Indent to underside crossbar DL1/F18 - 2nd 'A' arms short



T2 / UF1t DL1/ E18 (fu)
 Curved indent from left of downward curve of 't'
 V1g - 'R' over 'Se' & Diagonal cuts in limbs of 'R' & 'n'



T2 / UF1t DL1/ E18 (fu)
 Curved indent from left of downward curve of 't'



T2GB / UF1t DL1/ E19 (fu)
 Thinned base line curve of 't'
 Greyish Black overprint ink



T2 / UF1t DL1/ E23 (fu)
 Short crossbar of 't' with bevelled ends



T2 / UF1t DL1/ E21 (fu)
 Curved indent from left into crossbar & top of upright
 Left Stamp V1b 'R' over 'Se' & 'l' over left shank of 'n'
 Right Stamp V1f 'R' over 'Se', 'l' over 'nA' & 'ei' over 'l'



T2 / UF1t DL1/ E25 (fu)
 Main curve of 't' thinned



T1 / UF1t DL1/ E26 (fu)
 Curved indent in lower part of 't' from left



T2 / UF1t DL1/ E27 (fm)
 Irregular shaped indent mid point of curve of 't' from left



T2 / UF1t DL1/ E28 (f)
 Two breaks in lower curve of 't'



T2 / UF1t DL1/ E29 (fu)
 Major break below crossbar & tip of 't' cut
 y1f

DOLLARD - FIRST LINE TYPE VARIETIES.
BASIC DATA TAKEN FROM STUDIES CONDUCTED BY ARTHUR STOKES

OVERPRINT VARIETIES, FIRST LINE 'Rialtas'

RIALTAS

DOLLARD - ISSUES 1T, 2T

DOLLARD PRINTING - VARIETIES & FLAWS to 't' of 'Rialtas'



T2 / UF1t DL1/ E30 (fu)
 Crossbar of 't' with break from left to curve



T2 / UF1t DL1/ E30 (fu)
 Crossbar of 't' with break from left to curve



T2 / UF1t DL1/ E31 (fu)
 Circular break in lower curvature of 't'
 V1e - "R" over 'Se' & 'ei' over '1'



T2 / UF1t DL1/ E31 (fu)
 Circular break in lower curvature of 't'
 V1e - "R" over 'Se' & 'ei' over '1'



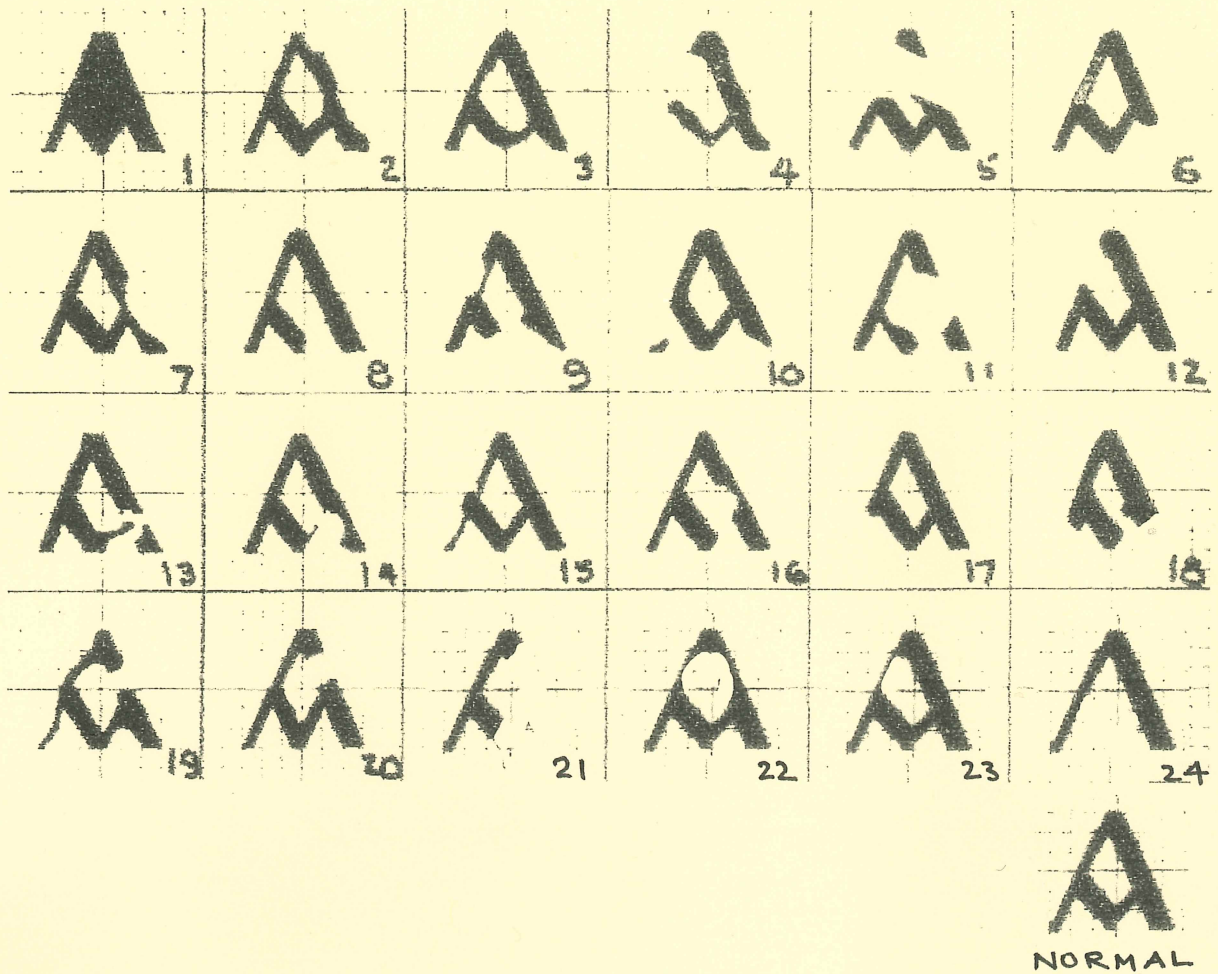
T2 / UF1t DL1/ E32 (fu)
 Major break in curve from crossbar & tip of curve short & flat
 Stamp top left V1f - 'R' over 'Se', 'l' over 'nA' & 'ei' over '1'
 Bottom left V1d - 'R' over 'Se' & 'l' over 'nA'
 Bottom right V1m - 'ei' over '1'



T2 / UF1t DL1/ E32 (fu)
 Major break in curve from crossbar & tip of curve short & flat
 Upper Stamp V1c - 'R' over 'Se' & 'l' over right shank of 'n'
 Lower Stamp V1f - 'R' over 'Se', 'l' over 'nA' & 'ei' over '1'

DOLLARD FIRST LINE FLAWS, in second 'a' of 'Rialtas'

(Flaw representations vary in both quality & accuracy, allocations in study are therefore the nearest equivalent)



DOLLARD - FIRST LINE TYPE VARIETIES.
BASIC DATA TAKEN FROM STUDIES CONDUCTED BY ARTHUR STOKES

OVERPRINT VARIETIES, FIRST LINE 'Rialtas'

RIALTAS

DOLLARD - ISSUES 1T, 2T

DOLLARD PRINTING - VARIETIES & FLAWS to second 'a' of 'Rialtas'



T2 / UF1t DL1/ F6 (fu)
 Right leg of 'a' missing
 below crossbar



T1 / UF1t DL1/ F11 (fu)
 Circular break in right leg
 & in right side of crossbar



T2 / UF1t DL1/ F11 (fu)
 Circular break in right leg
 & in right side of crossbar



T2 / UF1t DL1/ F11 (fu)
 Circular break in right leg
 & in right side of crossbar



T1 / UF1t DL1/ F12 (fu)
 Break in left leg above crossbar



T2 / UF1t DL1/ F12 (fu)
 Break in left leg above crossbar



T2 / UF1t DL1/ F16 (fm)
 Curved indent centre of inner
 right leg & break in crossbar



T2 / UF1t DL1/ F17 (fu)
 Left leg of 'a' missing
 Below crossbar



T2 / UF1t DL1/ F21 (fu)
 Right leg of 'a' & right side of
 crossbar missing



T2 / UF1t DL1/ F22 (fu)
 Circular inner flaw in area above crossbar with indents
 to both legs
 Top Stamp V1c - 'R' over 'Se' & 'l' over right shank of 'n'
 Lower Stamp V1f - 'R' over 'Se', 'l' over 'nA' & 'ei' over 'l'



T2 / UF1t DL1/ F23 (fu)
 Thinned left leg of 'a' above
 crossbar
 DL1/E27 Irregular indent left
 side of lower curve of 't'
 V1a - 'R' over 'Se'

**DOLLARD - FIRST LINE TYPE VARIETIES.
BASIC DATA TAKEN FROM STUDIES CONDUCTED BY ARTHUR STOKES**

OVERPRINT VARIETIES, FIRST LINE 'Rialtas'

RIALTAS

DOLLARD - ISSUES 1T, 2T

DOLLARD PRINTING - VARIETIES & FLAWS to second 'a' of 'Rialtas'



T2 / UF1t DL1/ F2 (fu)
Indent flaw in top outer right leg of 'a' in 'Rialtas'
T2/ V1k
'l' over left shank of 'n' in 'nA'



T2 / UF1t DL1/ F12 (fu)
Break in left leg above crossbar of 'a' in 'Rialtas'
T2/ V1b
'R' over 'Se' & 'l' over left shank of 'n' in 'nA'
cds WEXFORD 19 AU 22



T2 / UF1t DL1/ F12 (fu)
Break in left leg above crossbar of 'a' in 'Rialtas'

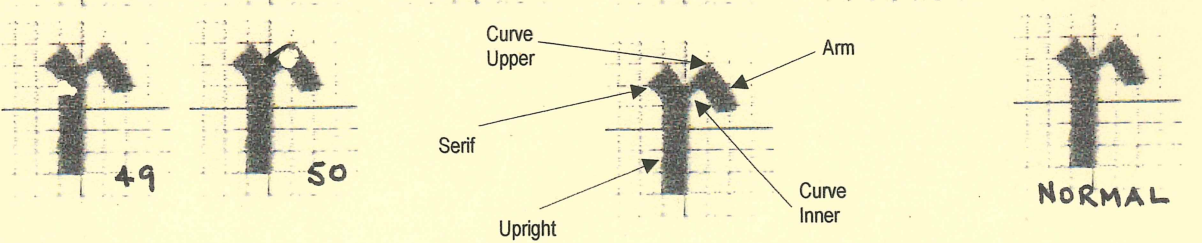
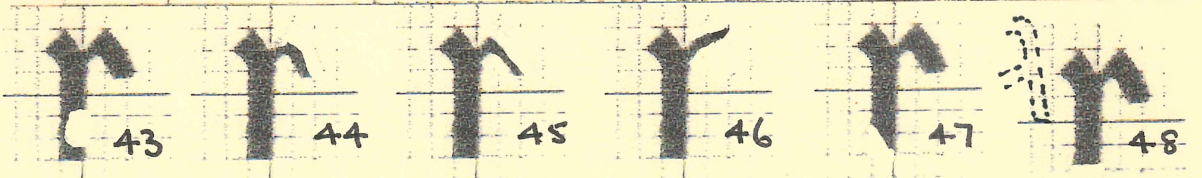
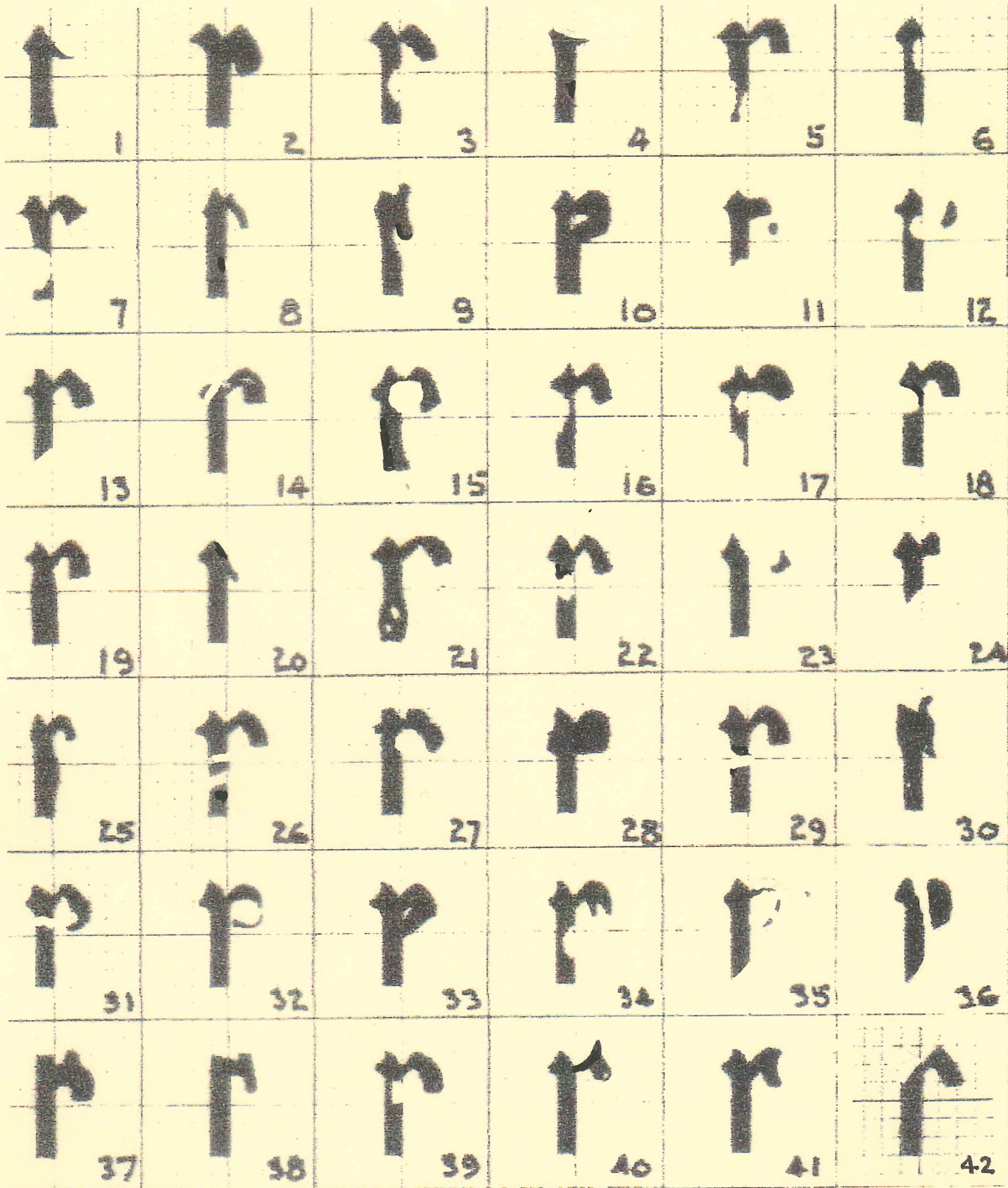


T3 / UF1t DL1/ F12 (umm)
Right Stamp
Break in left leg above crossbar of 'a' in 'Rialtas'

DOLLARD FIRST LINE FLAWS, in 's' of 'Rialtas'

Gaelic shape of 's' resembles the Latin 'r', with the upright having an extended length (r)

(Flaw representations vary in both quality & accuracy, allocations in study are therefore the nearest equivalent)



NORMAL

DOLLARD - FIRST LINE TYPE VARIETIES.
BASIC DATA TAKEN FROM STUDIES CONDUCTED BY ARTHUR STOKES

OVERPRINT VARIETIES, FIRST LINE 'Rialtas'

RIALTAS

DOLLARD - ISSUES 1T, 2T

DOLLARD PRINTING - VARIETIES & FLAWS to 's' of 'Rialtas'



T1 / F1f DL1/ G1 (fu)
 Broken 's' with curve distorted & replaced by serif



T2 / F1f DL1/ G1 (fu)
 Broken 's' with curve distorted & replaced by serif
 Left Stamp V1i
 'R' over 'Se' & 'c' of 'Sealadac' raised
 Right Stamp V1g
 'R' over 'Se' & diagonal cuts to uprights of 'R' & 'n'



T2 / F1f DL1/ G3 (fu)
 Broken 's'
 Curved indent in upright from right



T2 / F1h DL1/ G4 (fu)
 Broken 's' with curve distorted, replaced by small serifs left & right of upright & no dot on raised 'c'
 V1a - 'R' over 'Se'



T2 / F1h DL1/ G4 (fu)
 Broken 's' with curve distorted, replaced by small serifs left & right of upright and no dot on raised 'c'
 V1a - 'R' over 'Se'



T2 / F1h DL1/ G4 (fu)
 Broken 's' with curve distorted, replaced by small serifs left & right of upright & no dot on raised 'c'
 V1a - 'R' over 'Se'



T1 / F1f DL1/ G6 (fu)
 Broken 's' with no curve & with small upper indent from right side of upright



T1 / F1f DL1/ G6 (fu)
 Broken 's' with no curve & with small upper indent from right side of upright

DOLLARD - FIRST LINE TYPE VARIETIES.
BASIC DATA TAKEN FROM STUDIES CONDUCTED BY ARTHUR STOKES

OVERPRINT VARIETIES, FIRST LINE 'Rialtas'

RIALTAS

DOLLARD - ISSUES 1T, 2T

DOLLARD PRINTING - VARIETIES & FLAWS to 's' of 'Rialtas'



T1 / UF1t DL1 / G7 (fu)
Curved indent
side of up



T2 / UF1t DL1 / G7 (fu)



T2 / UF1t DL1 / G7 (fu)
Curved indent in left
side of upright



T2 / UF1t DL1 / G7 (fu)
Curved indent in left
side of upright



T2 / UF1t DL1 / G7 (fu)
Curved indent in left
side of upright



T2 / UF1t DL1 / G7 (fu)
Curved indent in left
side of upright
T1GB Greyish Black
overprint ink



T2 / UF1t DL1 / G8 (fm)
Small loop / curve of 's'
in 'Rialtas'
V1a - 'R' over 'Se'



T2 / UF1t DL1 / G9 (fu)
Compressed loop of 's'
in 'Rialtas'



T2 / UF1t DL1 / G10 (fu)
Loop of 's' joined at two
points to upright
forming 'P'



T2 / UF1t DL1 / G12 (fu)
Circular break in curve
& indent in upright



T2 / UF1t DL1 / G13 (fu)
Upright of 's' shortened
with bevel to the right



T2 / UF1t DL1 / G13 (fu)
Upright of 's' shortened
with bevel to the right



T2 / UF1t DL1 / G13 (fu)
Upright of 's' shortened
with bevel to the right



T2 / V1a & DL1 / G10
cas BORRIS
C: CARLOW



T2 / UF1t DL1 / G14 (fu)
Diagonal flaw in upright,
below serif to top of curve



T2 / UF1t DL1 / G16 (fu)
Curved indent left side of
upright below serif



T2 / UF1t DL1 / G17 (fu)
Base of upright with irregular
flaw from left & indent flaw from
right below curve

DOLLARD - FIRST LINE TYPE VARIETIES.
BASIC DATA TAKEN FROM STUDIES CONDUCTED BY ARTHUR STOKES

OVERPRINT VARIETIES, FIRST LINE 'Rialtas'

RIALTAS

DOLLARD - ISSUES 1T, 2T

DOLLARD PRINTING - VARIETIES & FLAWS to 's' of 'Rialtas'



T1 / UF1t DL1/ G15 (fu)
Circular flaw giving
indents in inner curve &
upright



T1 / UF1t DL1/ G15 (fu)
Circular flaw giving
indents in inner curve &
upright



T1 / UF1t DL1/ G15 (fu)
Circular flaw giving
indents in inner curve &
upright



T2 / UF1t DL1/ G15 (fu)
Circular flaw giving indents in inner
curve & upright
V1b - 'R' over 'Se' & 'l' over left shank
of 'n'



T2 / UF1t DL1/ G15 (fu)
Circular flaw giving indents in inner curve & upright
Left Stamp V1a - 'R' over 'Se'
Right Stamp V1f - 'R' over 'Se' & 'l' over 'nA' & 'ei' over '1'



T2 / UF1t DL1/ G15 (fu)
Circular flaw giving indents in inner curve & upright
Right Stamp V1a- 'R' over 'Se'



T1 / UF1t DL1/ G19 (fu)
Lower part of upright
width slightly expanded



T1 / F1f DL1/ G20 (fu)
Curve replaced by down-
ward facing serif



T1 / F1f DL1/ G22 (fu)
Mid way break in upright



T1 / F1f DL1/ G22 (fu)
Mid way break in upright



T2 / F1f DL1/ G22 (fu)
Mid way break in upright



T2 / UF1t DL1/ G23 (fu)
Major break in curve
from upright to its tip



T2 / UF1t DL1/ G23 (fu)
Major break in curve
from upright to its tip
DL1/E31 't' with break in
loop
V1a - 'R' over 'Se'



T2 / UF1t DL1/ G26 (fu)
Two line breaks in at mid
point of upright



T2 / UF1t DL1/ G27 (fu)
Circular indent from
right of upright adjacent
to curve / loop



T2 / UF1t DL1/ G29 (fu)
Wedge shaped break in
upright from the left

DOLLARD - FIRST LINE TYPE VARIETIES.
BASIC DATA TAKEN FROM STUDIES CONDUCTED BY ARTHUR STOKES

OVERPRINT VARIETIES, FIRST LINE 'Rialtas'

RIALTAS

DOLLARD - ISSUES 1T, 2T

DOLLARD PRINTING - VARIETIES & FLAWS to 's' of 'Rialtas'



T1 / V1w + V1h DL1/ G24 (fu)
 Left Stamp V1h - Small 's', raised
 'c' in 'Sealadac' & 'R' over 'Se'
 Right Stamp V1j - Diagonal cuts
 to 'R' & 'n' & top of 'c' damaged



T1 / V1w + V1h DL1/ G24 (fu)
 Left Stamp -V1h - Small 's', raised
 'c' in 'Sealadac' & 'R' over 'Se'
 Right Stamp V1j - Diagonal cuts to
 'R' & 'n' & top of 'c' damaged



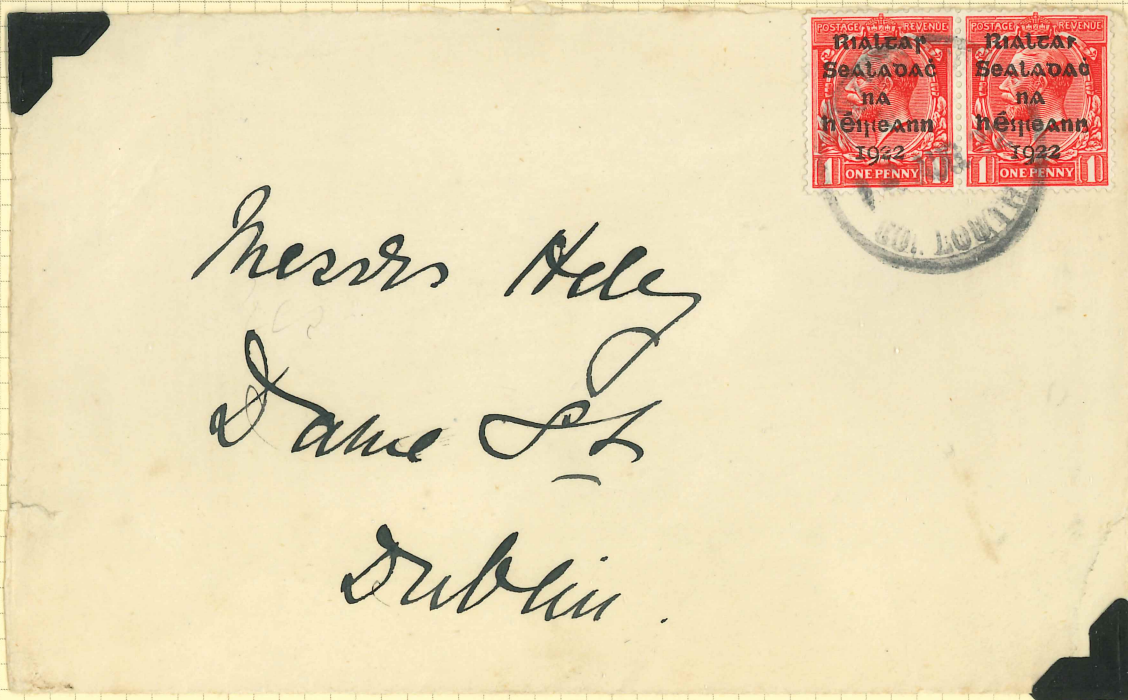
T2 / V1w + V1h DL1/ G24 (fu)
 Small 's', raised 'c' in 'Sealadac'
 & 'R' over 'Se'
 2nd 'n' of 'héireann', lower right
 shank balloned



T2 / V1w + V1h DL1/ G24 (fu)
 Small 's', raised 'c' in 'Sealadac'
 & 'R' over 'Se'
 DL5/ H29 2nd 'n' of 'héireann',
 base with thinned loop



T2 / V1w DL1/ G24 (fu) + V1h
 Small 's' & raised 'c' in 'Sealadac'
 & 'R' over 'Se'
 DL5/ H29 2nd 'n' of 'héireann',
 base with thinned loop



T2 / V1w DL1/ G24 (fu) + V1h
 Small 's' & raised 'c' in 'Sealadac' & 'R' over 'Se'
 DL5/ H29 2nd 'n' of 'héireann', base with thinned loop

DOLLARD - FIRST LINE TYPE VARIETIES.
BASIC DATA TAKEN FROM STUDIES CONDUCTED BY ARTHUR STOKES

OVERPRINT VARIETIES, FIRST LINE 'Rialtas'

RIALTAS

DOLLARD - ISSUES 1T, 2T

DOLLARD PRINTING - VARIETIES & FLAWS to 's' of 'Rialtas'



T2 / UF1t DL1/ G31 (fu)
 Line break in upright adjacent to tip of curve



T2 / UF1t DL1/ G30 (fu)
 Arm of curve compressed & distorted



T2 / UF1t DL1/ G31 (fu)
 Line break in upright adjacent to tip of curve



T2 / UF1t DL1/ G32 (fu)
 Curve with thinned loop, forming 'P'
 V1c - 'R' over 'Se' & 'l' over right shank of 'n'



T2 / UF1t DL1/ G32 (fu)
 Curve with thinned loop, forming 'P'
 V1c - 'R' over 'Se' & 'l' over right shank of 'n'



T2 / UF1t DL1/ G32 (fu)
 Curve with thinned loop, forming 'P'
 V1c - 'R' over 'Se' & 'l' over right shank of 'n'



T2 / UF1t DL1/ G32 (fu)
 Curve with thinned loop, forming 'P'
 V1c - 'R' over 'Se' & 'l' over right shank of 'n'



T2 / UF1t DL1/ G33 (fu)
 Curve with thick loop forming 'P', with pin hole centre



T4 / UF1t DL1/ G32 (fu)
 Curve with thinned loop, forming 'P'
 Left Stamp T51 (fu)
 Issue 9T Saorstat



T2 / UF1t DL1/ G36 (fu)
 Downward line cut in curve adjacent to upright



T2 / UF1t DL1/ G35 (fu)
 Curve with thinned loop forming 'P' with breaks



T2 / UF1t DL1/ G38 (fu)
 Serif sliced in line with upright on left



T2 / UF1t DL1/ G38 (fu)
 Serif sliced in line with upright on left

DOLLARD - FIRST LINE TYPE VARIETIES.
BASIC DATA TAKEN FROM STUDIES CONDUCTED BY ARTHUR STOKES

OVERPRINT VARIETIES, FIRST LINE 'Rialtas'

RIALTAS

DOLLARD - ISSUES 1T, 2T

DOLLARD PRINTING - VARIETIES & FLAWS to 's' of 'Rialtas'



T1 / UF1t DL1/ G40 (fu)
Circular indent into top of curve by upright



T2 / UF1t DL1/ G40 (fu)
Circular indent into top of curve by upright



T2 / UF1t DL1/ G42 (fu)
Sliced diagonal cut from left of upright, no serif



T2 / UF1t DL1/ G42 (fu)
Sliced diagonal cut from left of upright, no serif



T1 / UF1t DL1/ G43 (fu)
Indent in lower upright from right
DL2/F22 'd' with break in right side of loop



T2 / UF1t DL1/ G44 (fu)
Loop of curve shortened & thinned
V1a - 'R' over 'Se'



T2 / UF1t DL1/ G44 (fu)
Loop of curve shortened & thinned
V1a - 'R' over 'Se'



T2 / UF1t DL1/ G44 (fu)
Loop of curve shortened & thinned
V1a - 'R' over 'Se'



T2 / UF1t DL1/ G44 (fu)
Loop of curve shortened & thinned
V1a - 'R' over 'Se'



T1 / UF1t DL1/ G45 (fu)
Loop of curve flattened downward left to right & thinned



T2 / UF1t DL1/ G45 (fu)
Loop of curve flattened downward left to right & thinned
V1i - 'R' over 'Se' & 'c' raised in 'Sealadac'



T2 / UF1t DL1/ G46 (fu)
Loop of curve tilts upwards left to right & thinned



T2 / UF1t DL1/ G46 (fu)
Loop of curve tilts upwards left to right & thinned

DOLLARD - FIRST LINE TYPE VARIETIES.
BASIC DATA TAKEN FROM STUDIES CONDUCTED BY ARTHUR STOKES

OVERPRINT VARIETIES, FIRST LINE 'Rialtas'

RIALTAS

DOLLARD - ISSUES 1T, 2T

DOLLARD PRINTING - VARIETIES & FLAWS to 's' of 'Rialtas'



T2 / UF1t DL1/ G47 (fu)
 Bevel in base of upright
 from left to right



T1 / UF1t DL1/ G48 (fu)
 Upright of 's' shortened, with top of curve
 in line with mid point of right leg of the
 adjacent 'a'



T2 / UF1t DL1/ G49 (fu)
 Small triangular inclusion top
 of upright from left



T1 / UF1t DL1/ G50 (fu)
 Small circular flaw within
 centre of curve

OVERPRINT SECOND LINE 'Sealadac'

DOLLARD ISSUES 1T & 2T

Width of
second line
15 mm



SEALADAC

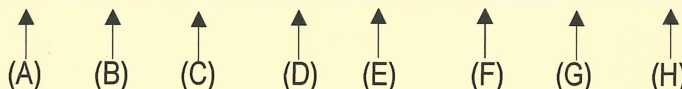
DL2

NOTATIONS USED to identify VARIETIES and FLAWS (in brackets)

SECOND LINE Dollard (DL2)

LETTERS

SEALADAC



Alpha letters used in sequence to identify each letter of the second line overprint.

IDENTIFICATION of VARIETIES and FLAWS found with each of the SECOND LINE LETTERS

Numerals from (1) onwards used, extent being dependent on the number of variants identified..

In the case of the Dollard variants, the basis for identification are the numeric allocations assigned by V. A. Linnell in 1974 & 1975 issues of 'The Revealer'.

As an example the first letter 'S' with a break in the centre of the lower curve on the Dollard 1d value shown, will be referenced : T2/DL2/A19.



Alignment Varieties

V1e - 'R' over 'Se' & 'ei' over '1'



T2 /DL2/A19

For added clarity the variant identifier is prefixed by the Stamp 'T' reference, from the 'Compendium'. In cases where the variety is listed in the 'Compendium', then this reference will also be added. Any drawings reproduced are in the main taken from the hand drawn sketches by V. A. Linnell.

Whilst this study is mainly focused on type variants, in cases where varieties occur due to line alignments, arising from Dollard Settings 2 & 3, then wherever possible these will be highlighted. Varieties being V1a to V1n for Issue 1T and V2a to V2n for Issue 2T.

DOLLARD SECOND LINE FLAWS, in 'S' of 'Sealadac'

(Flaw representations vary in both quality & accuracy, allocations in study are therefore the nearest equivalent)



1



2



3



4



5



6



7



8



9



10



11



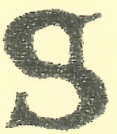
12



13



14



15



16



17



18



19



20



21



22



23



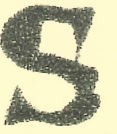
24



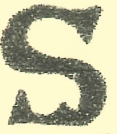
25



26



27



28



29



30



31



32



33



34



35



36



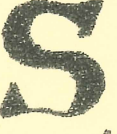
37



38



39



40



41



42



43



44



45



46



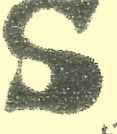
47



48



49



50



51



52



NORMAL

DOLLARD - SECOND LINE TYPE VARIETIES.
BASIC DATA TAKEN FROM STUDIES CONDUCTED BY ARTHUR STOKES

OVERPRINT VARIETIES, SECOND LINE 'Sealadac'

SEALADAC

DOLLARD - ISSUES 1T, 2T

DOLLARD PRINTING - VARIETIES & FLAWS to 'S' of 'Sealadac'



T2 / UF1t DL2/ A2 (fu)
Break in upper curve



T2 / UF1t DL2/ A2 (fu)
Break in upper curve



T6 / UF1t DL2/ A2 (fu)
Break in upper curve



T2 / UF1t DL2/ A19 (fu)
Major break in lower curve
V1a - 'R' over 'Se'



T2 / UF1t DL2/ A19 (fu)
Major break in lower curve
V1a - 'R' over 'Se'



T2 / UF1t DL2/ A32 (fu)
Diagonal straight line flaw in
left side of upper curve



T2 / UF1t DL2/ A33 (fu)
Break in connecting loop
between curves &
serifs in lower curve
replaced by circular flaw



T1 / UF1t DL2/ A37 (fu)
'S' thinned & with break in
connecting loop
between curves



T2 / UF1t DL2/ A37 (fu)
'S' thinned & with break in
connecting loop
between curves



T2 / UF1t DL2/ A51 (fu)
Upper loop oversize to left
& thinned



T2 / UF1t DL2/ A51 (fu)
Upper loop oversize to left
& thinned
V1f - 'R' over 'Se', 'l' over
'nA' & 'ei' over 'l'



T2 / UF1t DL2/ A51 (fu)
Upper loop oversize to left
& thinned
Left Stamp
V1l - 'l' over left shank of
'n' & 'ei' over 'l'
Right Stamp
V1c - 'R' over 'Se' &
'l' over 'nA'



T2 / UF1t DL2/ A48 (fu)
Top of upper curve raised / oversize
& thinned

DOLLARD SECOND LINE FLAWS, in 'e' of 'Sealadac'

(Flaw representations vary in both quality & accuracy, allocations in study are therefore the nearest equivalent)



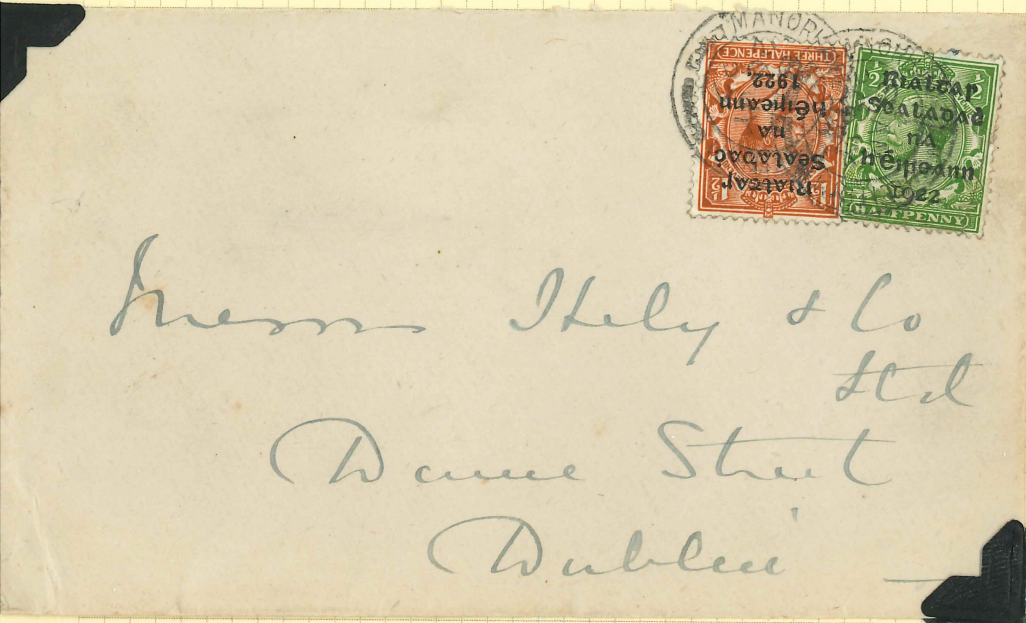
DOLLARD - SECOND LINE TYPE VARIETIES.
BASIC DATA TAKEN FROM STUDIES CONDUCTED BY ARTHUR STOKES

OVERPRINT VARIETIES, SECOND LINE 'Sealadac'

SEALADAC

DOLLARD - ISSUES 1T, 2T

DOLLARD PRINTING - VARIETIES & FLAWS to 'e' of 'Sealadac'



T1 / UF1t DL2 / B14 (fu)
 Break in crossbar & flaws in lower curve to left
 T15 Thom 1½d (fu)

T2 / UF1t DL2 / B15 (fu)
 Break in upper curve of 'e'



T2 / V1t DL2 / B16 (fu)
 'c' for 'e'
 No crossbar & damage to
 inner left of lower curve

T2 / V1t DL2 / B16 (fu)
 'c' for 'e'
 No crossbar & damage to
 inner left of lower curve

T2 / UF1t DL2 / B18 (fu)
 Upper curve of 'e' & crossbar
 thinned. Crossbar with slight
 upward tilt at tip

T2 / UF1t DL2 / B18 (fu)
 Upper curve of 'e' & crossbar
 thinned. Crossbar with slight
 upward tilt at tip

T2 / F1t DL2 / B23 (fu)
 Lower curve with ink
 Infill / blotted &
 2nd 'n' of 'Sealadac' blotted



T1 / F1t DL2 / B26 (fu)
 'e' of 'Sealadac' joined to
 form an 'o' & upper left
 curve with flaw



T2 / F1t DL2 / B27 (fu)
 'e' of 'Sealadac' with fine join
 to form an 'o'

DOLLARD - SECOND LINE TYPE VARIETIES.
BASIC DATA TAKEN FROM STUDIES CONDUCTED BY ARTHUR STOKES

OVERPRINT VARIETIES, SECOND LINE 'Sealadac'

Sealadac

DOLLARD - ISSUES 1T, 2T

DOLLARD PRINTING - VARIETIES & FLAWS to 'e' of 'Sealadac'



T1 / V1t DL2/ B28 (fm)

Middle Stamp 'c' for 'e' in 'Sealadac' &

T1/ UF1t DL4/ A52 Break in upper part of left upright

Left Stamp T1/ UF1t DL1/B3 'i' bends to the left with flaw in left side of upright



T1 / V1t DL2/ B28 (fu)

'c' for 'e' in 'Sealadac'



T2 / V1t DL2/ B28 (fu)

'c' for 'e' in 'Sealadac'

Left Stamp

DL4/C36 Major break - lower section of upright of 'i'



T2 / V1t DL2/ B28 (fu)

'c' for 'e' in 'Sealadac'



T2 / V1t DL2/ B28 (fu)

'c' for 'e' in 'Sealadac'

Left Stamp

T2/ UF1t DL2/ B39

Curved indent flaw mid point from left



T2 / UF1t DL2/ B33 (fu)

Crossbar with breaks/ flaws



T2 / UF1t DL2/ B32 (fu)

Break in lower curve of 'e'



T2 / UF1t DL2/ B38 (fu)

Upper curve thinned with irregular flaws & indent flaw in left side of lower curve



T2 / UF1t DL2/ B42 (fu)

Lower tip of 'e' cut shortened

Left Stamp V1d 'R' over 'Se' & 'l' over 'nA'

Right Stamp V1e 'R' over 'Se' & 'ei' over 'l'



T2 / UF1t DL2/ B52 (fu)

Break in right side of upper curve of 'e'



T2 / VF1t DL2/ B54 (fu)

Major break in crossbar & both tips cut back, giving wide opening to 'c'



T2 / VF1t DL2/ B54 (fu)

Major break in crossbar & both tips cut back, giving wide opening to 'c'

**DOLLARD - SECOND LINE TYPE VARIETIES.
BASIC DATA TAKEN FROM STUDIES CONDUCTED BY ARTHUR STOKES**

OVERPRINT VARIETIES, SECOND LINE 'Sealadac'

Sealadac

DOLLARD - ISSUES 1T, 2T

DOLLARD PRINTING - VARIETIES & FLAWS to 'e' of 'Sealadac'



T3 / UF1t DL2/ B55 (fm)
Right side of 'e' with flat edge



T2 / UF1t DL2/ B56 (fu)
Top curve of 'e' with breaks & distorted
& indent flaw outer left adjacent
to crossbar



T2 / UF1t DL2/ B56 (fu)
Top curve of 'e' with breaks & distorted
& indent flaw outer left adjacent
to crossbar



T2 / UF1t DL2/ B61 (fu)
Mid way break from left of 'e' & small
cut in crossbar



T2 / UF1t DL2/ B61 (fu)
Mid way break from left of 'e' & small
cut in crossbar



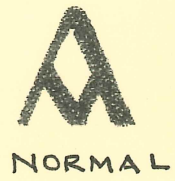
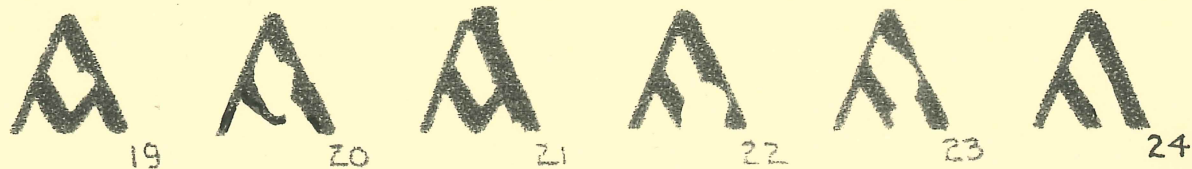
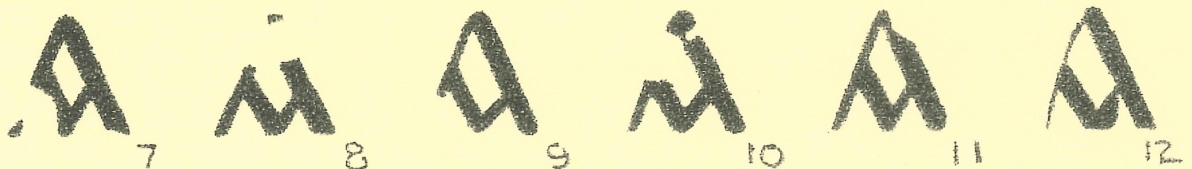
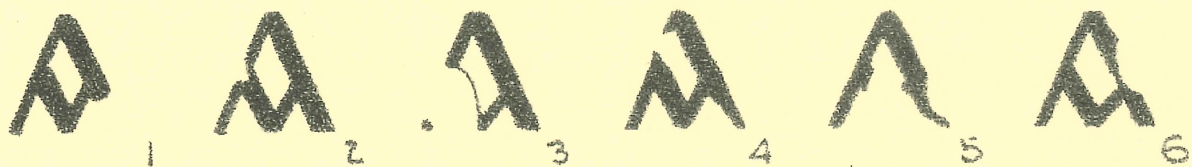
T2 / UF1t DL2/ B61 (fu)
Mid way break from left of 'e' & small
cut in crossbar



T2 / UF1t DL2/ B61 (fu)
Mid way break from left of 'e' & small
cut in crossbar

DOLLARD SECOND LINE FLAWS, in first 'a' of 'Sealadac'

(Flaw representations vary in both quality & accuracy, allocations in study are therefore the nearest equivalent)



**DOLLARD - SECOND LINE TYPE VARIETIES.
BASIC DATA TAKEN FROM STUDIES CONDUCTED BY ARTHUR STOKES**

OVERPRINT VARIETIES, SECOND LINE 'Sealadac'

Sealadac

DOLLARD - ISSUES 1T, 2T

DOLLARD PRINTING - VARIETIES & FLAWS to first 'a' of 'Sealadac'



T1 / UF1t DL2/ C3 (fu)
Break in left leg of 'a', with left arm of crossbar replaced by thin curved line



T2 / UF1t DL2/ C3 (fu)
Break in left leg of 'a', & left arm of crossbar missing



T4 / UF1t DL2/ C3 (fm)
Break in left leg of 'a', with left arm of crossbar replaced by thin curved line
DL1/A18 Break in upper curve of 'R' in 'Rialtas'



T2GB / UF1t DL2/ C7 (fu)
Break in left leg of 'a' & curved indent in left arm of crossbar
Greyish Black overprint ink



T2 / UF1t DL2/ C14 (fu)
Curved indent in outer left arm adjacent to crossbar



T1 / UF1t DL2/ C20 (fu)
Crossbar distorted with right side missing & indent mid point right arm inner

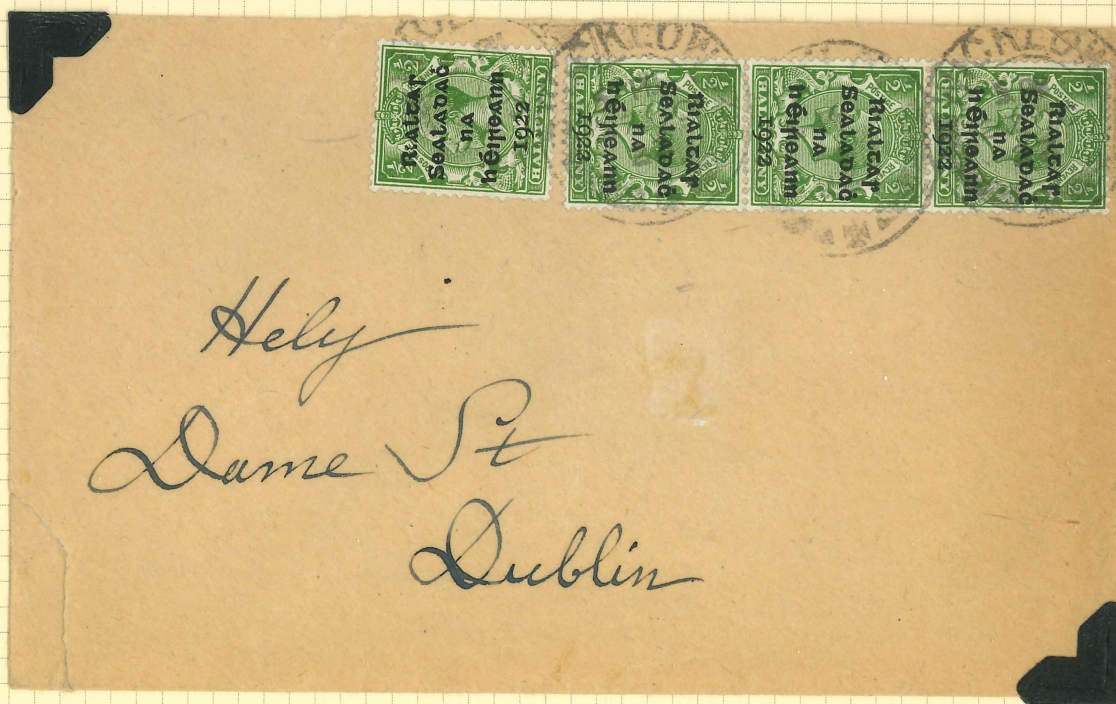


T2 / UF1t DL2/ C22 (fu)
Break right arm of crossbar & indent inner side of right arm



T2 / UF1t DL2/ C24 (fu)
Right arm of crossbar missing

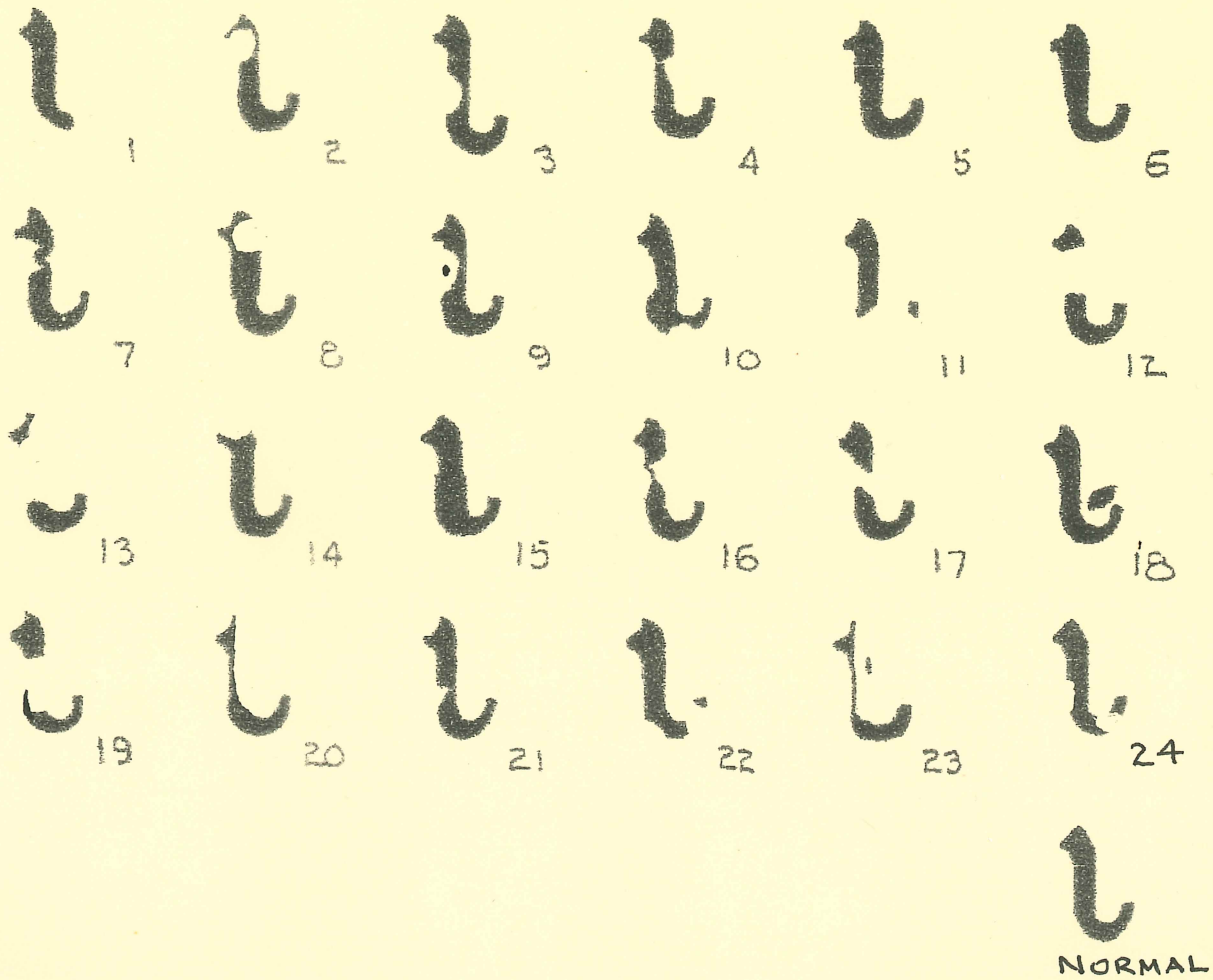
DL2/ C32 No crossbar
DL2/ D19 Break upright 'l'



T1 / UF1t DL2/ C22 (fu)
Stamp 2 (from left) Break right arm of crossbar & indent inner side of right arm
Stamp 1 DL1/B13 'i' of 'Rialtas' with curved indent in right side of upright & DL1/ F1 2nd 'a' of Rialtas' blotted

DOLLARD SECOND LINE FLAWS, in 'l' of 'Sealadac'

(Flaw representations vary in both quality & accuracy, allocations in study are therefore the nearest equivalent)



**DOLLARD - SECOND LINE TYPE VARIETIES.
BASIC DATA TAKEN FROM STUDIES CONDUCTED BY ARTHUR STOKES**

OVERPRINT VARIETIES, SECOND LINE 'Sealadac'

Sealadac

DOLLARD - ISSUES 1T, 2T

DOLLARD PRINTING - VARIETIES & FLAWS to 'l' of 'Sealadac'



T1 / UF1t DL2/ D2 (fu)
Circular flaw in upper left side of upright, by serif



T2 / UF1t DL2/ D3 (fu)
Curved indent midway in left side of upright



T1 / UF1t DL2/ D8 (fu)
Circular flaw in upper right side of upright, adjacent to serif



T2 / UF1t DL2/ D9 (fu)
Curved indent with dot midway in left side of upright



T2 / F1ia DL2/ D11 (fu)
Break lower part of upright, giving 'i' for 'l'



T1 / UF1t DL2/ D13 (fu)
Major break in upright below upper tip
Left Stamp V1e 'R' over 'Se' & 'ei' over 'l'
Right Stamp V1l 'l' over left shank of 'n' & 'ei' over 'l'



T1 / UF1t DL2/ D14 (fu)
Curved cut in top of upright cut, reducing height & giving a large serif



T2 / UF1t DL2/ D19 (fu)
Break in upright & lower portion distorted
V1b, 'R' over 'Se' & 'l' over left shank 'n'



T2 / UF1t DL2/ D19 (fu)
Break in upright & lower portion distorted



T2 / UF1t DL2/ D19 (fu)
Break in upright & lower portion distorted
DL2/G32 3rd 'a' crossbar missing



T1 / UF1t DL2/ D20 (fu)
Upright cut away / thinned over its length from the right



T2 / UF1t DL2/ D20 (fu)
Upright cut away / thinned over its length from the right



T1 / UF1t DL2/ D24 (fu)
Small indent lower left side of upright & break in lower curve near tip

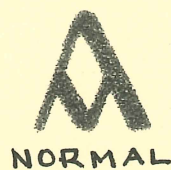
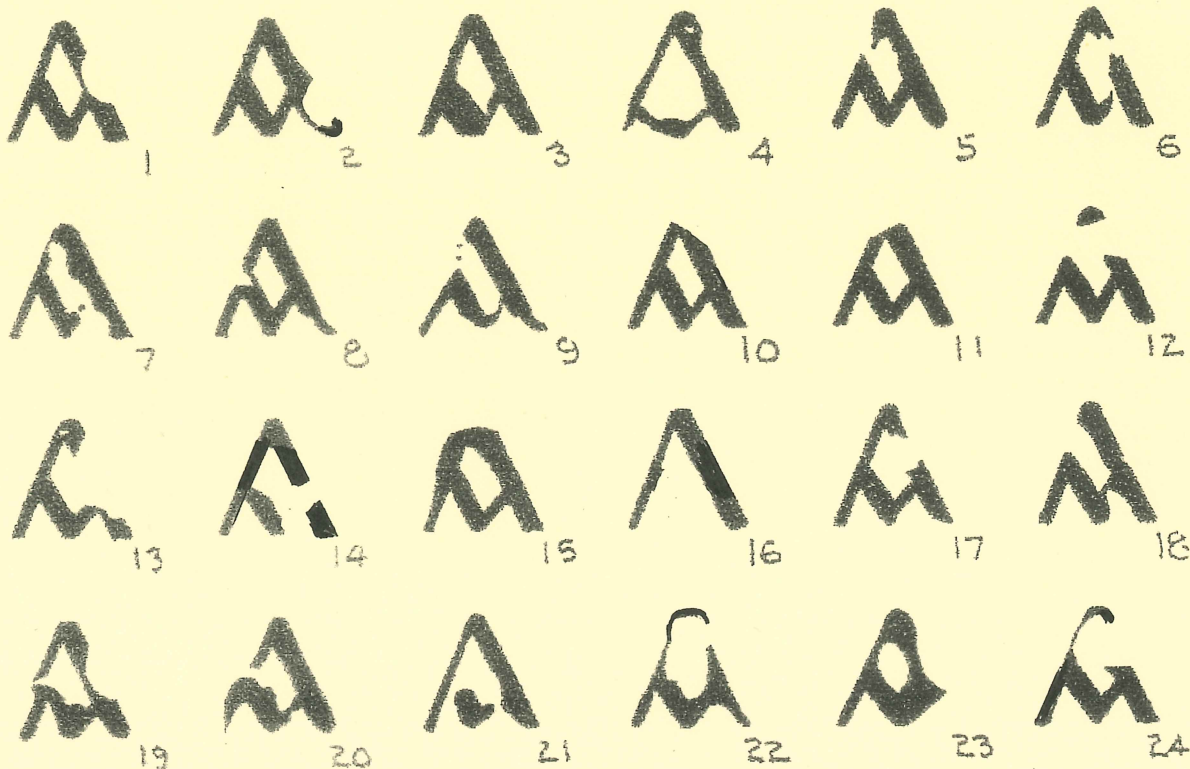
V1f 'R' over 'Se',
'l' over 'na' &
'ei' over 'l'



Left stamp
DL2/ D11
and V1f
ods MULLINGAR
24 JY 22

DOLLARD SECOND LINE FLAWS, in second 'a' of 'Sealadac'

(Flaw representations vary in both quality & accuracy, allocations in study are therefore the nearest equivalent)



DOLLARD - SECOND LINE TYPE VARIETIES.
BASIC DATA TAKEN FROM STUDIES CONDUCTED BY ARTHUR STOKES

OVERPRINT VARIETIES, SECOND LINE 'Sealadac'

Sealadac

DOLLARD - ISSUES 1T, 2T

DOLLARD PRINTING - VARIETIES & FLAWS to second 'a' of 'Sealadac'



T1 / UF1t DL2/ E2 (fu)
Outer circular flaw in lower right leg of 'a'



T2 / UF1t DL2/ E10 (fu)
Flat top to 'a' sloping downwards to the right



T2 / UF1t DL2/ E14 (fu)
Break in right arm of crossbar & break in right leg adjacent to crossbar



T2 / UF1d DL2/ E16(fu)
No crossbar to 'a'
Left Stamp
DL2/H34 Break lower left curve of 'c'
V1k 'l' over left shank of 'n' in 'nA'
Right Stamp
T2/V1t DL2/B28 'c' for 'e' in 'Sealadac'
V1a 'R' over 'Se'



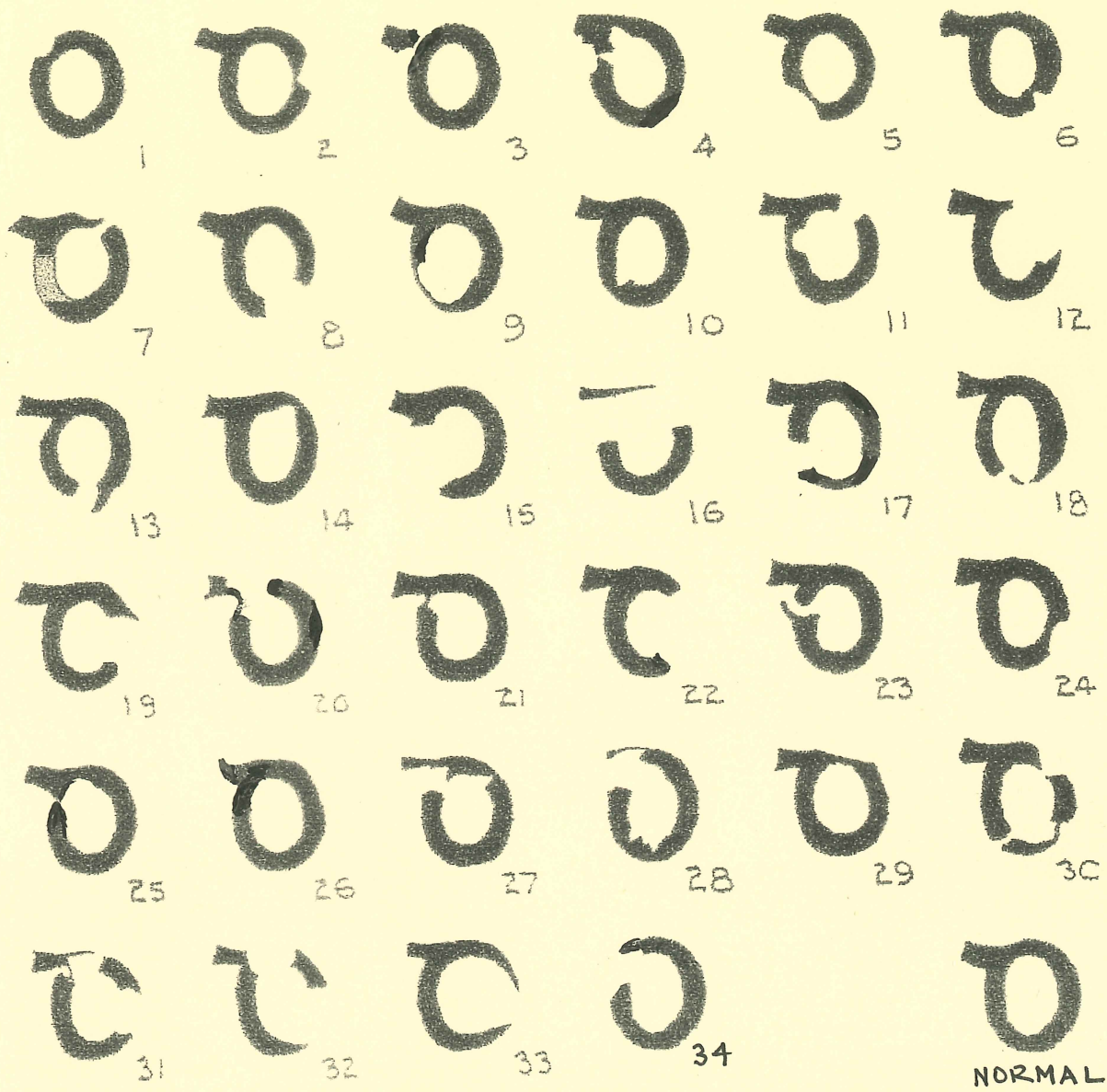
T2 / UF1t DL2/ E22 (fu)
Top of 'a' extended with thin circular loop



T2 / UF1t DL2/ E24 (fu)
Break in right leg of 'a' above crossbar & left tip of lower leg with serif

DOLLARD SECOND LINE FLAWS, in 'd' of 'Sealadac'

(Flaw representations vary in both quality & accuracy, allocations in study are therefore the nearest equivalent)



**DOLLARD - SECOND LINE TYPE VARIETIES.
BASIC DATA TAKEN FROM STUDIES CONDUCTED BY ARTHUR STOKES**

OVERPRINT VARIETIES, SECOND LINE 'Sealadac'

SEALADAC

DOLLARD - ISSUES 1T, 2T

DOLLARD PRINTING - VARIETIES & FLAWS to 'd' of 'Sealadac'



T1 / UF1t DL2/ F1 (fu)
Top stroke cut/ missing
Left Stamp V1l



T2 / UF1t DL2/ F3 (fu)
Flaw between right side of
top stroke & curve



T2 / UF1t DL2/ F3 (fu)
Flaw between right side of
top stroke & curve



T2 / UF1t DL2/ F4 (fu)
Upper left stroke distorted
& adjacent curve with
break & indents

'l' over left shank of 'n' & 'ei' over '1'
Right Stamp V1d
'R' over 'Se' & 'l' over right shank of 'n'



T2 / UF1t DL2/ F5 (fu)
Curved indent in outer
curve, bottom left
Vie 'R' over 'Se'
'ei' over '1'



T2 / UF1t DL2/ F9 (fu)
Inner curve lower left
thinned



T2 / UF1t DL2/ F9 (fu)
Inner curve lower left
thinned



T2 / UF1c DL2/ F12 (fu)
't' for 'd'



T2 / UF1c DL2/ F12 (fu)
't' for 'd'



T2 / UF1t DL2/ F17 (fu)
Break in left lower curve



T2 / UF1c DL2/ F19 (fu)
Break mid point
of right curve 'c' for 'd'



T2 / UF1t DL2/ F20 (fu)
Break top upper curve by
stroke & curve below
stroke thinned



T2 / UF1c DL2/ F22 (fu)
Large break 'c' for 'd'



T2 / UF1c DL2/ F22 (fu)
Large break 'c' for 'd'



T2 / UF1t DL2/ F25 (fu)
Indent in top inner
curve & weak join of
curve to stroke



T2 / UF1t DL2/ F26 (fu)
Stroke replaced
by a serif



T2 / UF1t DL2/ F26 (fu)
Stroke replaced
by a serif



T2 / UF1t DL2/ F32 (fu)
Breaks in both right &
top of curve



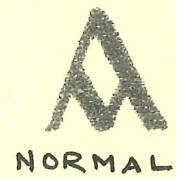
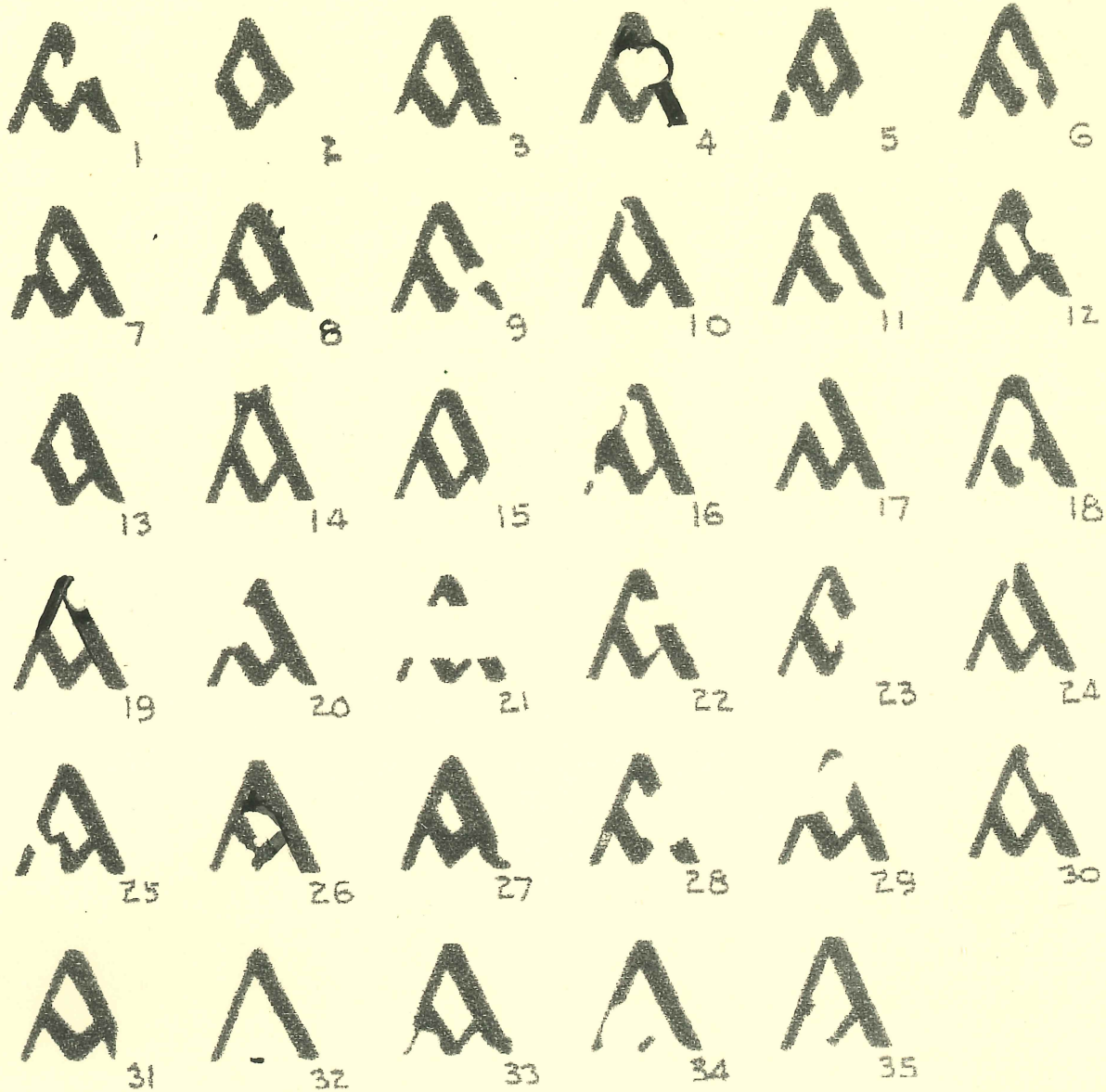
T2 / UF1c DL2/ F33 (fu)
Small break 'c' for 'd'



T1 / UF1t DL2/ F34 (fu)
No stroke & cut in curve

DOLLARD SECOND LINE FLAWS, in third 'a' of 'Sealadac'

(Flaw representations vary in both quality & accuracy, allocations in study are therefore the nearest equivalent)



**DOLLARD - SECOND LINE TYPE VARIETIES.
BASIC DATA TAKEN FROM STUDIES CONDUCTED BY ARTHUR STOKES**

OVERPRINT VARIETIES, SECOND LINE 'Sealadac'

Sealadac

DOLLARD - ISSUES 1T, 2T

DOLLARD PRINTING - VARIETIES & FLAWS to third 'a' of 'Sealadac'



T1 / UF1t DL2/ G3 (fu)
Short left leg of 'a'



T2 / UF1t DL2/ G3 (fu)
Short left leg of 'a'



T2 / UF1t DL2/ G4 (fu)
Indent from left side of right leg,
outer joined by curved line
Left Stamp V1e 'R' over 'Se' &
'ei' over '1'
Right Stamp V1I 'I' over left
shank of 'n' & 'ei' over '1'



T2 / UF1t DL2/ G4 (fu)
Indent from left side of
right leg, outer joined by
curved line



T1 / UF1t DL2/ G12 (fu)
Indent midway in right leg
from right outer
Left Stamp V1f
'R' over 'Se', 'I' over 'nA' &
'ei' over '1'
Right Stamp



T1 / UF1t DL2/ G13 (fu)
Left leg below crossbar
cut / missing
V1c
'R' over 'Se' & 'I' over
right shank of 'n'



T1 / UF1t DL2/ G13 (fu)
Left leg below crossbar
cut / missing



T2 / UF1t DL2/ G13 (fu)
Left leg below crossbar
cut / missing



T1 / UF1t DL2/ G19 (fu)
Indent top of right leg
from right outer

DL1/ D8 Break in upright
of 'I' from right &
DL2/ G24 Distorted
crossbar in 3rd 'a'



T2 / UF1t DL2/ G20 (fu)
Break in left leg above
crossbar
V1b 'R' over 'Se' & 'I' over
left shank of 'n'



T2 / UF1t DL2/ G20 (fu)
Break in left leg above
crossbar



T2 / UF1t DL2/ G20 (fu)
Break in left leg above
crossbar

**DOLLARD - SECOND LINE TYPE VARIETIES.
BASIC DATA TAKEN FROM STUDIES CONDUCTED BY ARTHUR STOKES**

OVERPRINT VARIETIES, SECOND LINE 'Sealadac'

Sealadac

DOLLARD - ISSUES 1T, 2T

DOLLARD PRINTING - VARIETIES & FLAWS to third 'a' of 'Sealadac'



T1 / UF1t DL2/ G22 (fu)
Break in right leg, above
crossbar



T2 / UF1t DL2/ G22 (fu)
Break in right leg, above
crossbar



T2 / UF1t DL2/ G26 (fu)
Crossbar distorted & flaw
to inner apex join of legs



T2 / UF1da DL2/ G32 (fu)
No crossbar on third 'a' & with dot
along base line between legs, common
Left Stamp
DL2/ D Damage to 'l'
DL2/ F Damage to 'd'
DL4 / A Damaged upright of 'h'
Right Stamp
DL2/ E Break in right leg of 2nd 'a'



T2 / UF1da DL2/ G32 (fu)
No crossbar on third 'a' &
with dot along base line
between legs, common



T4 / UF1da DL2/ G32 (fu)
No crossbar on third 'a' &
with dot along base line
between legs, common

DOLLARD SECOND LINE FLAWS, in 'c' of 'Sealadac'

(Flaw representations vary in both quality & accuracy, allocations in study are therefore the nearest equivalent)



**DOLLARD - SECOND LINE TYPE VARIETIES.
BASIC DATA TAKEN FROM STUDIES CONDUCTED BY ARTHUR STOKES**

OVERPRINT VARIETIES, SECOND LINE 'Sealadac'

SEALADAC

DOLLARD - ISSUES 1T, 2T

DOLLARD PRINTING - VARIETIES & FLAWS to 'c' of 'Sealadac'

Raised 'c' of 'Sealadac' from Dollard Stereo Settings 2 (V1h) and 3 (V1i)



T1/ DL2H Strip of four Setting 3 (fu)

- First Stamp V1g - 'R' over 'Se' & diagonal cuts to upright of 'R' & left shank of 'n'
- Second Stamp V1a - 'R' over 'Se'
- Third Stamp V1i - Raised 'c' & 'R' over 'Se'
- Fourth Stamp V1g - 'R' over 'Se' & diagonal cuts to upright of 'R' & left shank of 'n'



T1/ DL2H (fu)

- Upper Stamp V1d - 'R' over 'Se' & 'l' over right shank of 'n'
- Lower Stamp V1i - Raised 'c' & 'R' over 'Se'



T2/ DL2H (fu)

- Left Stamp Normal
- Right Stamp V1h - Slightly raised 'c' & 'R' over 'Se'



T2/ DL2H (fu)

- Left Stamp Normal
- Right Stamp V1h - Slightly raised 'c' & 'R' over 'Se'



T2/ DL2H (fu)

- Left Stamp V1a - 'R' over 'Se'
- Right Stamp V1h - Slightly raised 'c' & 'R' over 'Se'



T2/ DL2H (fu)

- V1h - Slightly raised 'c' & 'R' over 'Se'



T2/ DL2H (fu)

- V1i - Raised 'c' & 'R' over 'Se'
- DL1/G45 'r' curve flattened left to right & thinned



T2/ DL2H (fu)

- V1i - Raised 'c' & 'R' over 'Se'



T2/ DL2H (fu)

- V1i - Raised 'c' & 'R' over 'Se'



T4/ DL2H (fm)

- V1h - Slightly Raised 'c' & 'R' over 'Se'

**DOLLARD - SECOND LINE TYPE VARIETIES.
BASIC DATA TAKEN FROM STUDIES CONDUCTED BY ARTHUR STOKES**

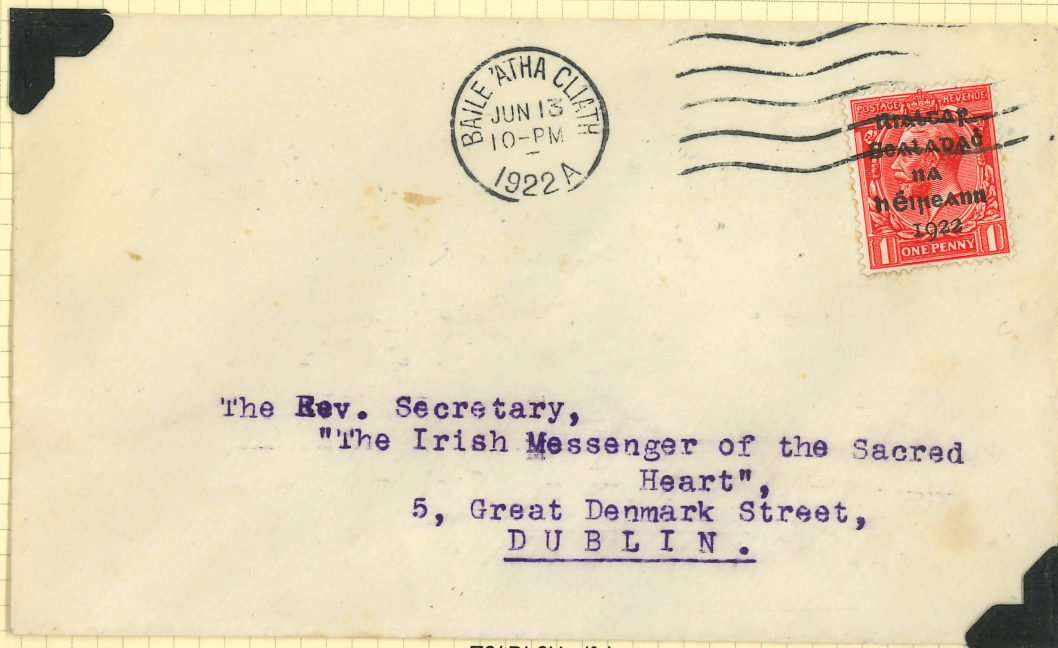
OVERPRINT VARIETIES, SECOND LINE 'Sealadac'

SEALADAC

DOLLARD - ISSUES 1T, 2T

DOLLARD PRINTING - VARIETIES & FLAWS to 'c' of 'Sealadac'

Raised 'c' of 'Sealadac' from Dollard Stereo Settings 2 (V1h) and 3 (V1i)



T2/DL2H (fu)
V1i - Raised 'c' & 'R' over 'Se'



T2/DL2H (fu)
Left Stamp V1i - Raised 'c' & 'R' over 'Se'
Right Stamp T2 / F1j - Arc over 'c'

DOLLARD - SECOND LINE TYPE VARIETIES.
BASIC DATA TAKEN FROM STUDIES CONDUCTED BY ARTHUR STOKES

OVERPRINT VARIETIES, SECOND LINE 'Sealadac'

SEALADAC

DOLLARD - ISSUES 1T, 2T

DOLLARD PRINTING - VARIETIES & FLAWS to 'c' of 'Sealadac'



T2/ UF1t DL2/H3 (fu)
Partly blocked 'c'



T2/ UF1t DL2/H3 (fu)
Partly blocked 'c'



T2/ UF1f DL2/H7 (fu)

'c' tips joined, over inked with dot touching top of curve
 Left Stamp V1l - 'l' over left shank of 'n' & 'ei' over '1'
 Right Stamp V1d - 'R' over 'Se' & 'l' over right shank of 'n'



T2/ UF1f DL2/H7 (fu)

'c' tips joined, over inked with dot touching top of curve
 V1i - 'R' over 'Se' & raised 'c'



T2/UF1t DL2/H10 (fu)
Top left break in
curve of 'c'



T2/ UF1t DL2/H10 (fu)
Top left break in
curve of 'c'



T2/UF1t DL2/H10 (fu)
Top left break in
curve of 'c'



T2/UF1t DL2/H10 (fu)
Top left break in
curve of 'c'



T2/UF1t DL2/H10 (fu)
Top left break in
curve of 'c'



T2/ F1j DL2/H12 (fu)
Dot replaced by small
arc



T1/ UF1t DL2/H15 (fu)
Break mid point left side
of curve in 'c'



T3/ UF1t DL2/H15 (fm)
Distorted top curve of 'c'



T6/ UF1t DL2/H15 (fm)
Curved indent from
outer left of 'c' above
mid point

DOLLARD - SECOND LINE TYPE VARIETIES.
BASIC DATA TAKEN FROM STUDIES CONDUCTED BY ARTHUR STOKES

OVERPRINT VARIETIES, SECOND LINE 'Sealadac'

SEALADAC

DOLLARD - ISSUES 1T, 2T

DOLLARD PRINTING - VARIETIES & FLAWS to 'c' of 'Sealadac'



T1/UF1t DL2/H21 (fu)
Tips of 'c' widened



T1/UF1t DL2/H21 (fu)
Tips of 'c' widened
v1a



T1/UF1t DL2/H22 (fu)
Upper leading edge of 'c' cut



T2/UF1t DL2/H22 (fu)
Upper leading edge of 'c' cut



T2/UF1t DL2/H23 (fu)
Upper leading edge of 'c' cut & with dot at tip



T1/UF1t DL2/H24 (fu)
Left inner curve of 'c' thinned & distorted



T2/UF1t DL2/H24 (fu)
Left inner curve of 'c' thinned & distorted



T1/UF1t DL2/H25 (fu)
Upper inner curve of 'c' thinned & distorted



T2/UF1t DL2/H26 (fu)
Break to right of lower curve



T2/UF1t DL2/H26 (fu)
Break to right of lower curve



T2/UF1t DL2/H27 (fu)
'c' over inked & tips very close



T2/UF1t DL2/H27 (fu)
'c' over inked & tips very close



T2/UF1t DL2/H29 (fu)
Dot replaced by semi circle & top arm slightly distorted



T1/UF1t DL2/H30 (fu)
Top arm of 'c' thinned towards tip



T2/UF1t DL2/H34 (fu)
Break in lower curve, bottom left



T2/UF1t DL2/H34 (fu)
Break in lower curve, bottom left



T2/UF1t DL2/H34 (fu)
Break in lower curve, bottom left



T4/UF1t DL2/H34 (fu)
Break in lower curve, bottom left

**DOLLARD - SECOND LINE TYPE VARIETIES.
BASIC DATA TAKEN FROM STUDIES CONDUCTED BY ARTHUR STOKES**

OVERPRINT VARIETIES, SECOND LINE 'Sealadac'

SEALADAC

DOLLARD - ISSUES 1T, 2T

DOLLARD PRINTING - VARIETIES & FLAWS to 'c' of 'Sealadac'



T2/ F1k DL2/H18 (fu)
Hyphen for dot over 'c'
& top arm distorted
V1a - 'R' over 'Se'



T2/ F1k DL2/H18 (fu)
Hyphen for dot over 'c'
& top arm distorted



T1/ UF1t DL2/H38 (fu)
Lower half of 'c' cut, &
semi circle remaining
joined by a straight line



T2/ UF1t DL2/H40 (fu)
Tips joined & mid point break on
left, forming a reversed 'c'
Left Stamp V11 - 'l' over left shank
of 'n' & 'ei' over 'l'
Right Stamp V1d - 'R' over 'Se' & 'l'
over right shank of 'n'



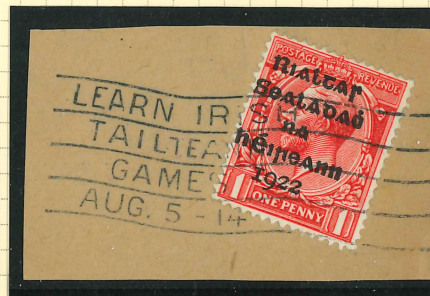
5/ UF1t DL2/H44 (m)
Lower arm of 'c' cut
from mid left side &
upper tip distorted



T4/ UF1t DL2/H45 (u)
Lower arm of 'c' thinned
& indent in top below
dot



T1/ UF1t DL2/H46 (fu)
Tips of 'c' joined with
right outer curve
flattened



T2/ UF1t DL2/H46 (fu)
Tips of 'c' joined with
right outer curve
flattened & dot in
contact with top of curve



T2/ UF1t DL2/H47 (fu)
Leading edges of both
arms thinned & distorted



T2/ F1j DL2/H49 (fu)
Arc over 'c' in place of
dot & top curve distorted



T1/ UF1e DL2/H50 (fu)
'c' collapsed / blotted &
shown in part with no dot
over 'c'
V1f - 'R' over 'Se', 'l' over
'nA' & 'ei' over 'l'



T2/ UF1e DL2/H50 (fm)
'c' collapsed / blotted &
shown in part with no dot
over 'c'
V1f - 'R' over 'Se', 'l' over
'nA' & 'ei' over 'l'



T2/ UF1e DL2/H50 (fu)
'c' collapsed / blotted &
shown in part with no dot
over 'c'
V1f - 'R' over 'Se', 'l' over
'nA' & 'ei' over 'l'



T2/ UF1e DL2/H50 (fu)
'c' collapsed / blotted &
shown in part with no dot
over 'c'
V1f - 'R' over 'Se', 'l' over
'nA' & 'ei' over 'l'



T2/ UF1t DL2/H51 (fu)
Damage outer bottom left
& inner upper curves of 'c'



T2/ UF1t DL2/H51 (fu)
Damage outer bottom left
& inner upper curves of 'c'



T2/ UF1t DL2/H52 (fu)
Lower arm of 'c' cut from
mid point of bottom curve



T6/ UF1t DL2/H52 (fm)
Upper arm leading edge
square cut & tip of lower
arm widened

DOLLARD - SECOND LINE TYPE VARIETIES.
BASIC DATA TAKEN FROM STUDIES CONDUCTED BY ARTHUR STOKES

OVERPRINT VARIETIES, SECOND LINE 'Sealadac'

Sealadac

DOLLARD - ISSUES 1T, 2T

DOLLARD PRINTING - VARIETIES & FLAWS to 'dot' & 'c' of 'Sealadac'



T2/ UF1t DL2/H8 (fu)
 Dot egg shaped' flattened
 & 'c' distorted
 V1a - 'R' over 'Se'



T2/ UF1t DL2/H14 (fu)
 Dot with circular flaw &
 lower leading edge of 'c'
 mis-shaped



T2/ F1k DL2/H36 (fu)
 Hyphen for dot & upper
 outer curve of 'c' distorted



T2/ F1j DL2/H (fu)
 Accent in place of dot
 over 'c'



T1/ F1j DL2/H (fu)
 Reversed accent in place
 of dot over 'c'



T2/ F1j DL2/H (fu)
 Arc for dot over 'c'



T2/ F1j DL2/H (fu)
 Reversed accent in place
 of dot over 'c'



T2/ UF1t DL2/H (fu)
 Mis-shaped dot over 'c'
 & 'c' damaged



T2/ UF1t DL2/H (fu)
 Mis-shaped dot over 'c'
 & 'c' damaged



T2/ UF1t DL2/H (fu)
 Mis-shaped dot over 'c'