

Morocco Agencies  
£

MINT

Waterlow & Layton

Water  
& Layton

Sepia  
Brown



Water  
& Layton  
Sepia  
Brown  
Specimen



SG 50  
Mint (400)  
£ 45

No. 13  
Mint +++  
BCK(A) 1



DE LA RUE

DLR  
Deep  
Yellow  
Brown  
~~Light~~



Very  
Deep  
Yellow  
Brown  
DLR



Yellow  
Brown  
DLR



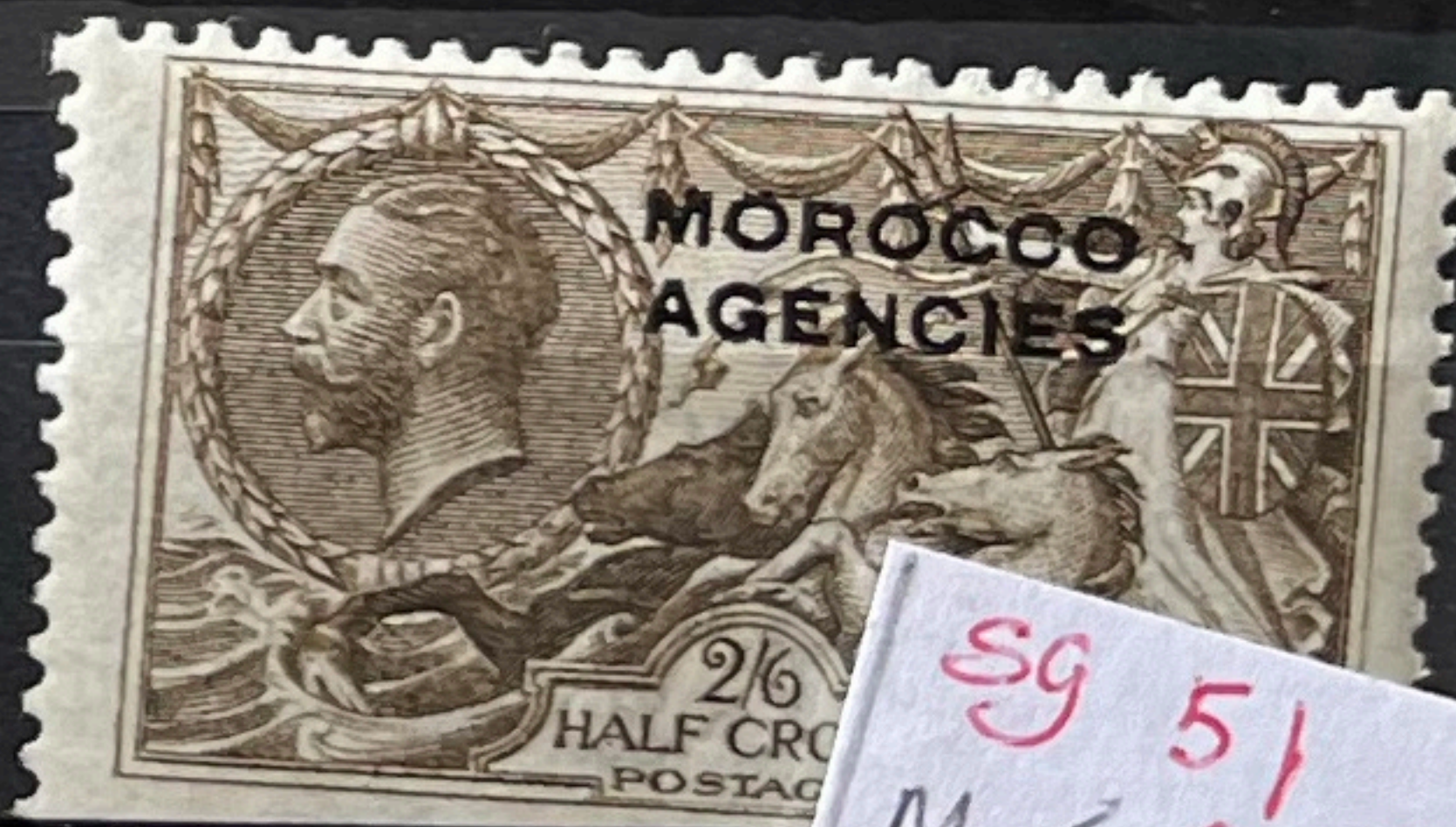
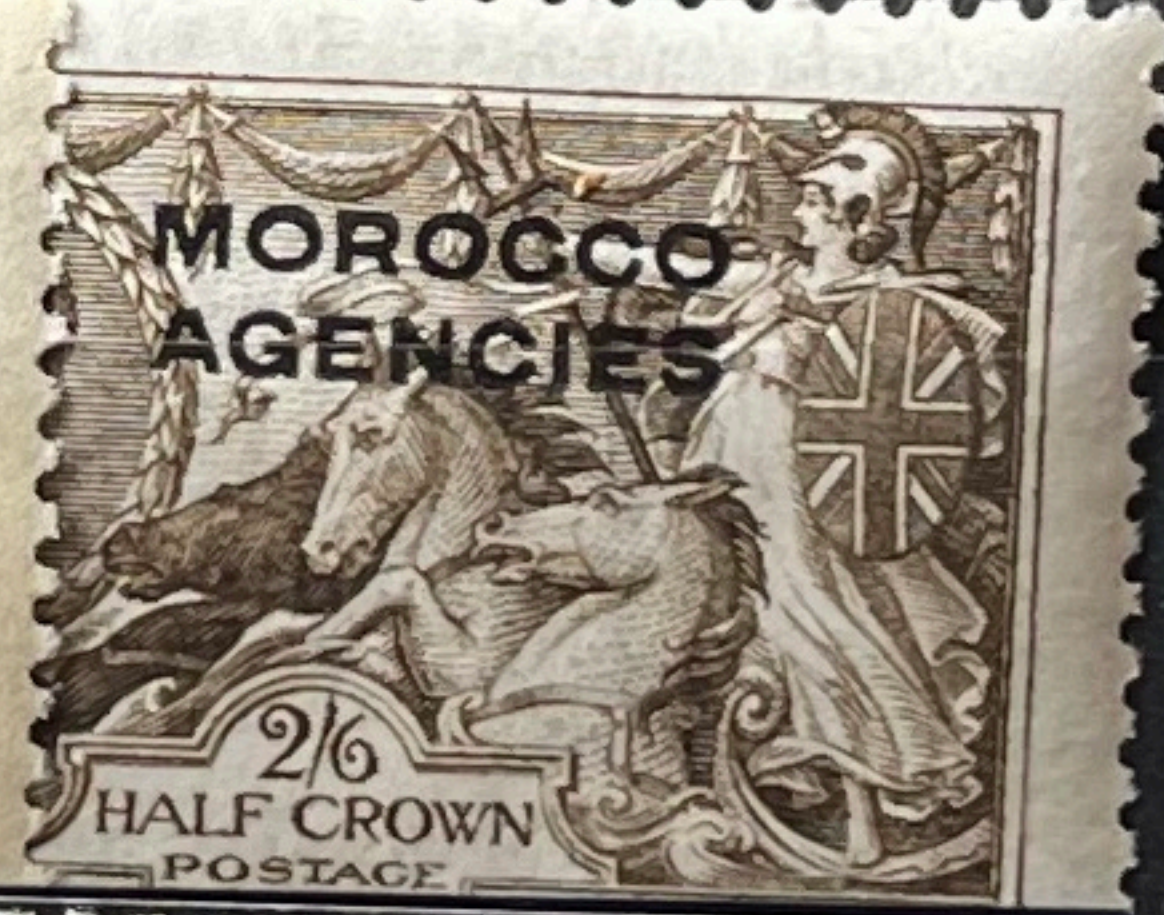
Seal  
Brown



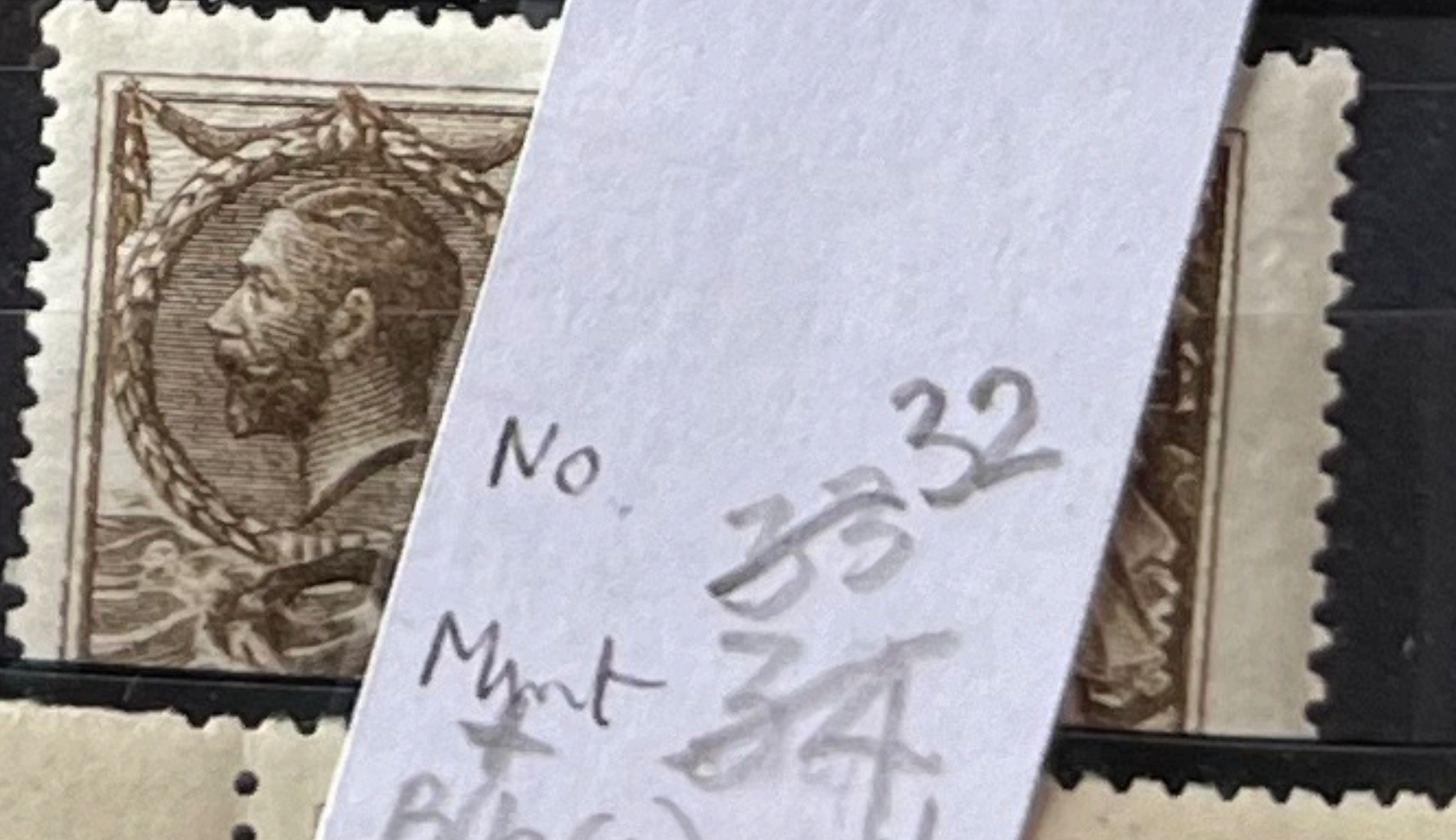
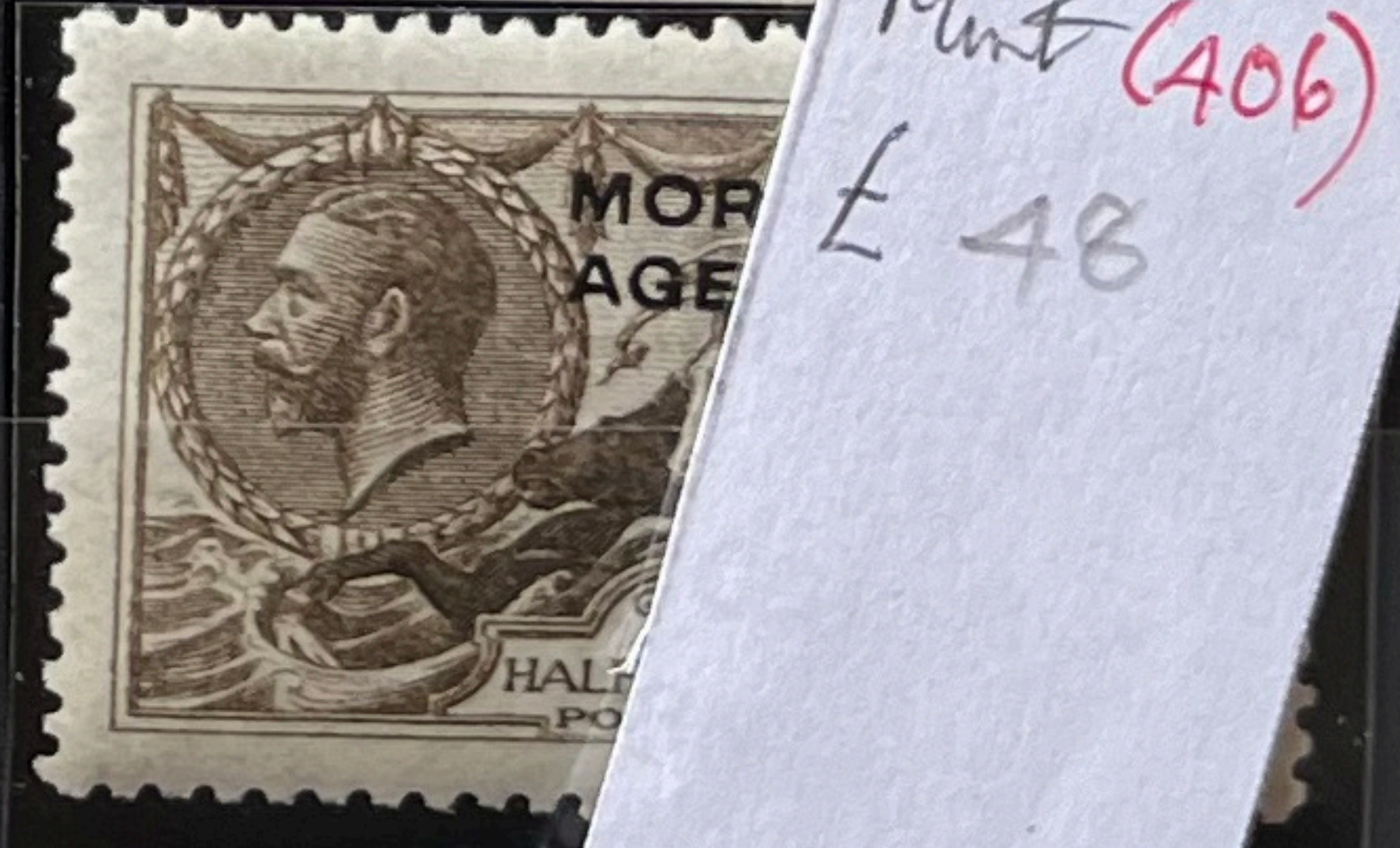
D.L.R.  
PC 11  
Seal  
Brown



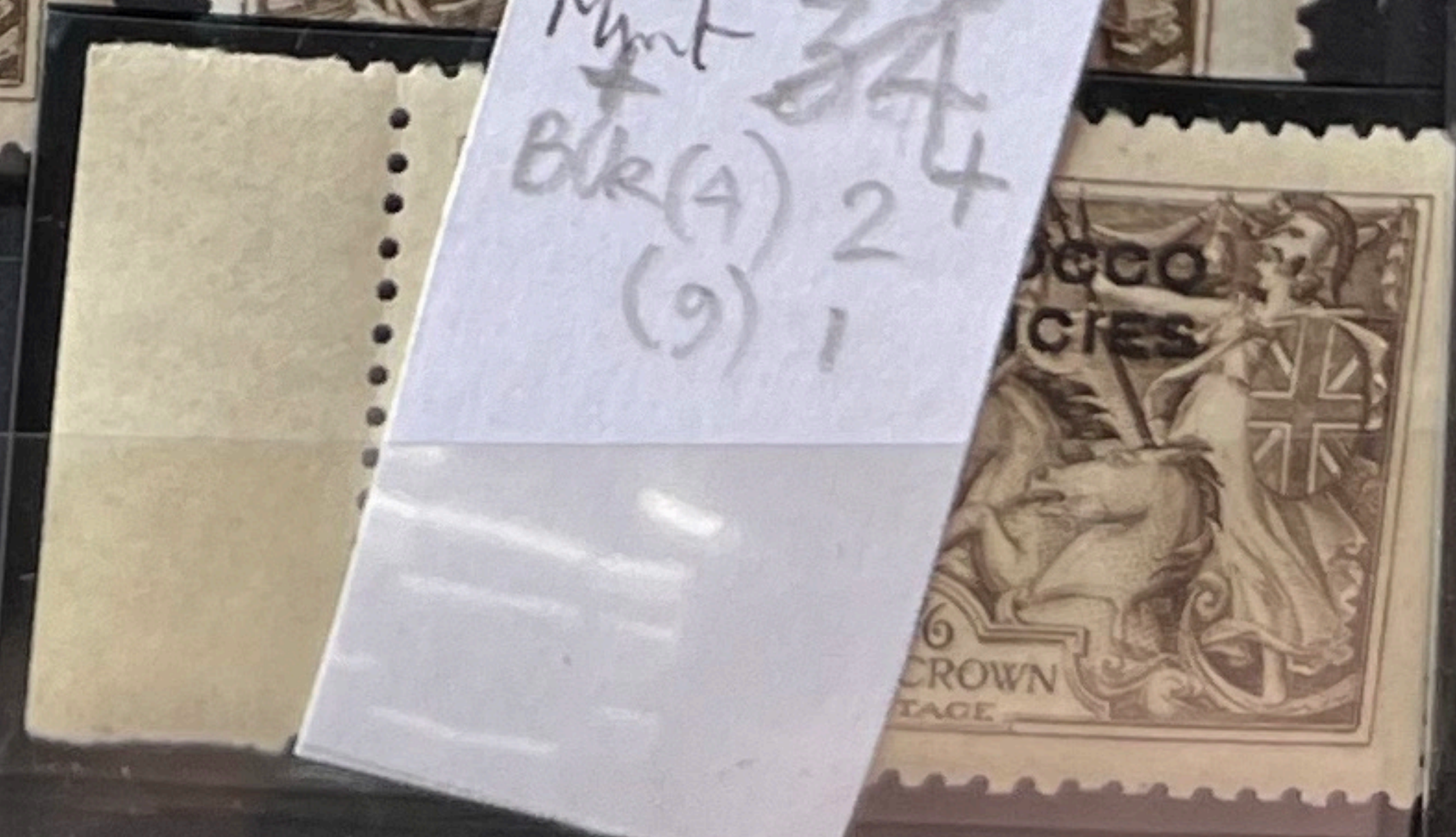
A.L.R.  
Seal  
Brown



sg 51  
Mnt (406)  
£ 48



No. 33 32  
Mnt 34  
Blk(A) 24  
(9) 1





No. 6257.....

# DAVID BRANDON

EXPERT COMMITTEE

77, STRAND, LONDON WC2R 0DE, ENGLAND

Date. 24-10-1980.....

The Committee is of the opinion that the

*Morocco Agencies. 1918-31, 2/6 chocolate-brown of Great Britain, Wmk. Single Cypher, Perf. 11x12, Bradbury Wilkinson printing showing "Nurses re-entry" (Pl. 2; R. 1/3) overprinted in black (S.G. 53 variety) secured with full original gum is genuine.*



*U.P. Bird  
Dus Bollen  
David Brandon.*



*BW 5353  
PLATE - /1 PARTS  
series I STATE, 3  
Choc. Brown.  
Pate - /1R R/2  
state 3  
Long Tail  
JC entry. 50 Apr  
& top fine line  
doubled & right  
outer J/C doubled*



BW  
Series I  
PC  
2/4 L  
State I  
Minor  
Entry  
R5/2  
Choc  
Brown



BW  
Series I  
Plate  
2/4 L  
State I  
Distinguished  
Entry  
R5/3  
Choc  
Brown



BW  
Series II  
Plate  
8/10  
Choc  
Brown

6257

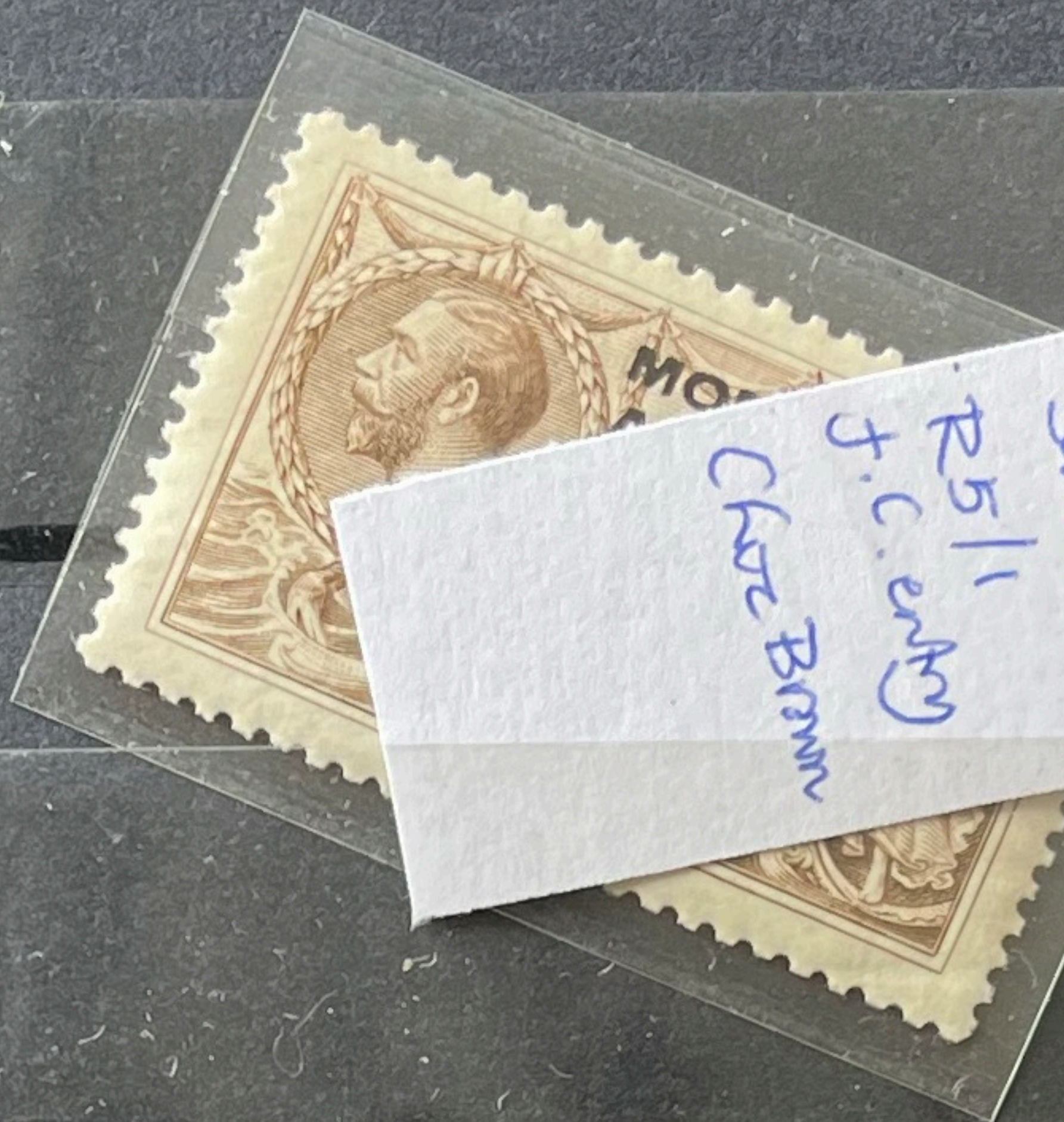


Plate  
2/4 Right  
(State I)  
R7/1  
Major  
~~not~~  
R1/3  
as on Cert.  
Choc  
Brown

S9 53  
Mint (A1A)  
£ 30  
No. 16  
Mint 16

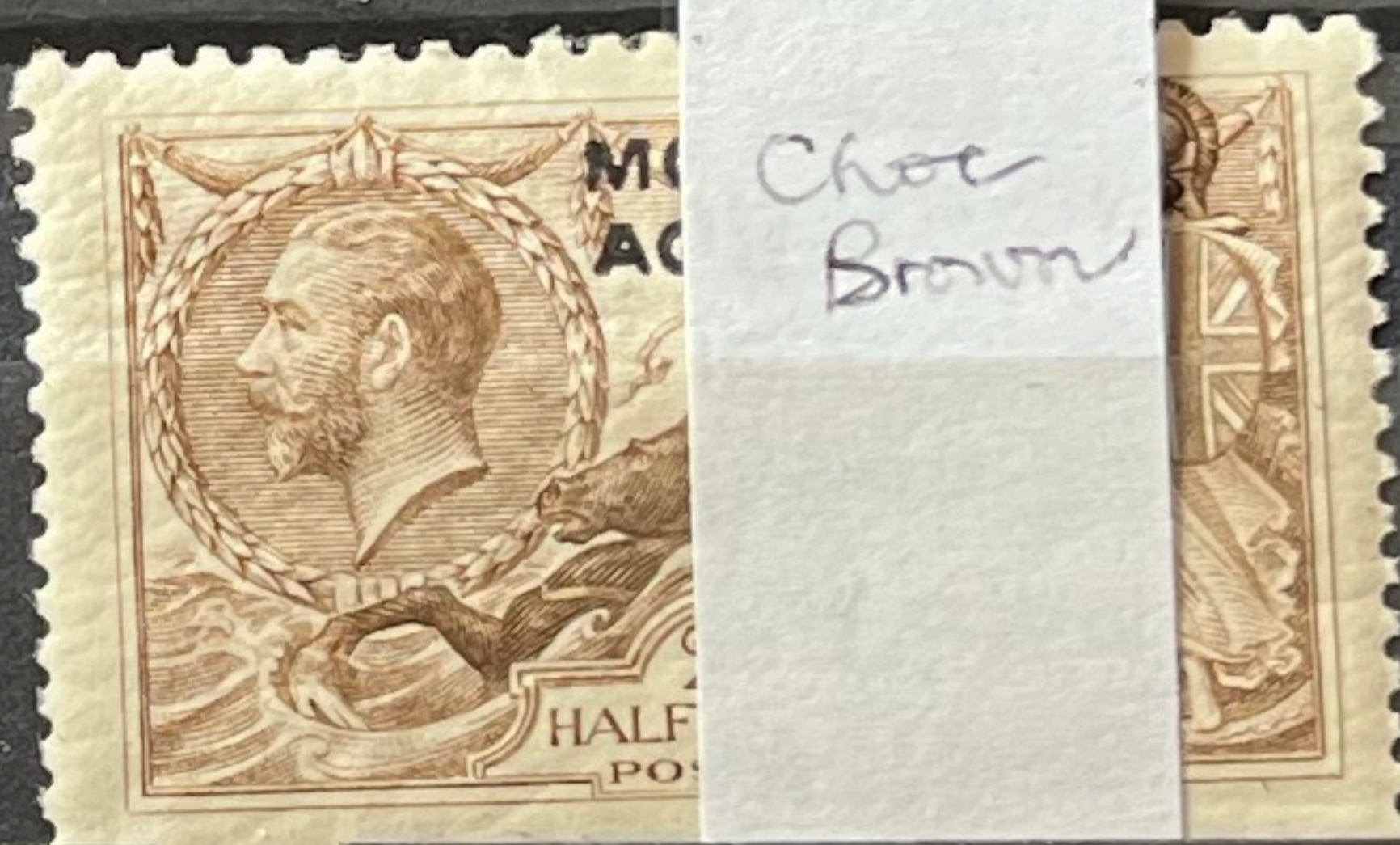


BRADBURY  
WILKINSON



BW I  
Series I  
PC-11R  
State 3  
R5/1  
f.c. only  
Choc Brown

BW  
Series I  
PC-11R  
State 3



Choc  
Brown

BW  
Series I  
PC-11R  
State 3  
Choc





BW  
Series III  
Rose Armix  
Plate 5/6L  
State 2



17  
11 (2)  
Minor  
Frame and  
dots  
at  
center



THIS SCHE  
S AND CON  
CATED BIE  
SSION:  
ER:  
ENCE ADD  
/PROPOSAL  
SURANCE







Re-Eng  
Bright  
Rose-Red



S9 74  
Mint (451)  
£ 23

No.  
Mint 11  
+  
Boks(4) 2





De La Rue

DLR  
Very  
Deep  
Yellow  
Brown

DLR  
Yellow  
Brown

DLR  
Super  
Brown

DLR  
Deep  
Yellow  
Brown



59 51 (406)  
used  
E 30

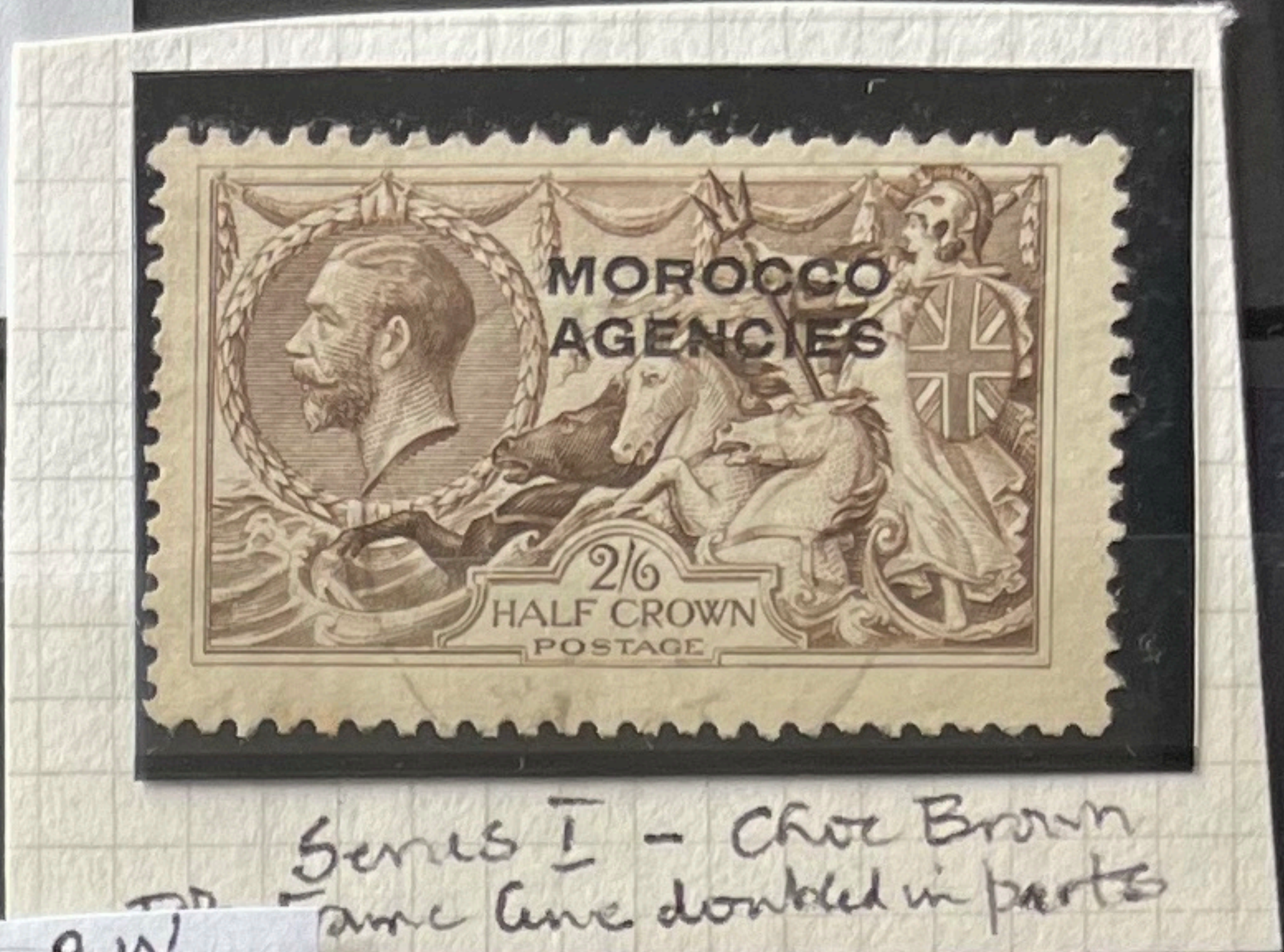
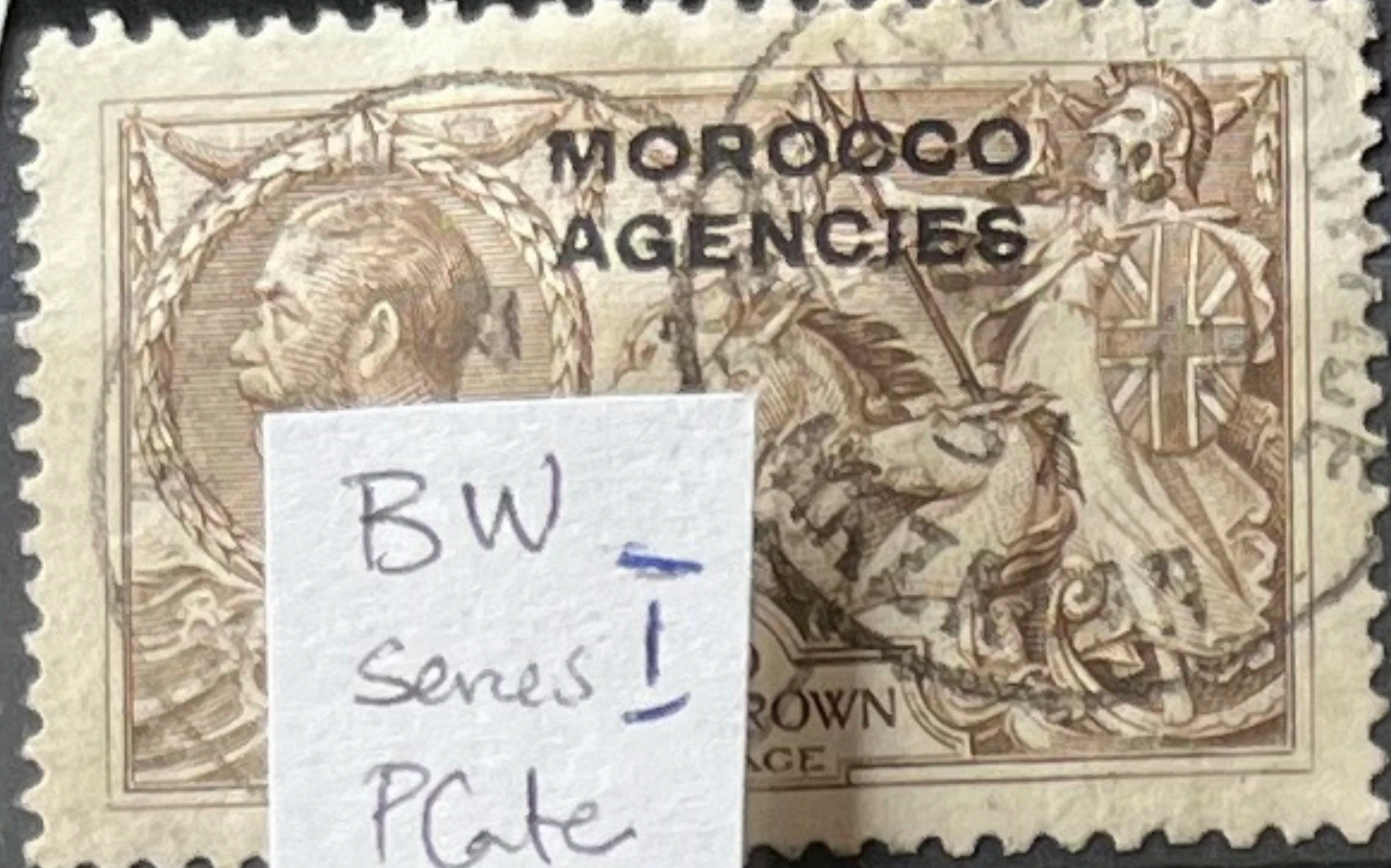
No. 24  
used

Page  
577L  
Number  
Entries  
R9/4  
R10/3  
Color  
Brown

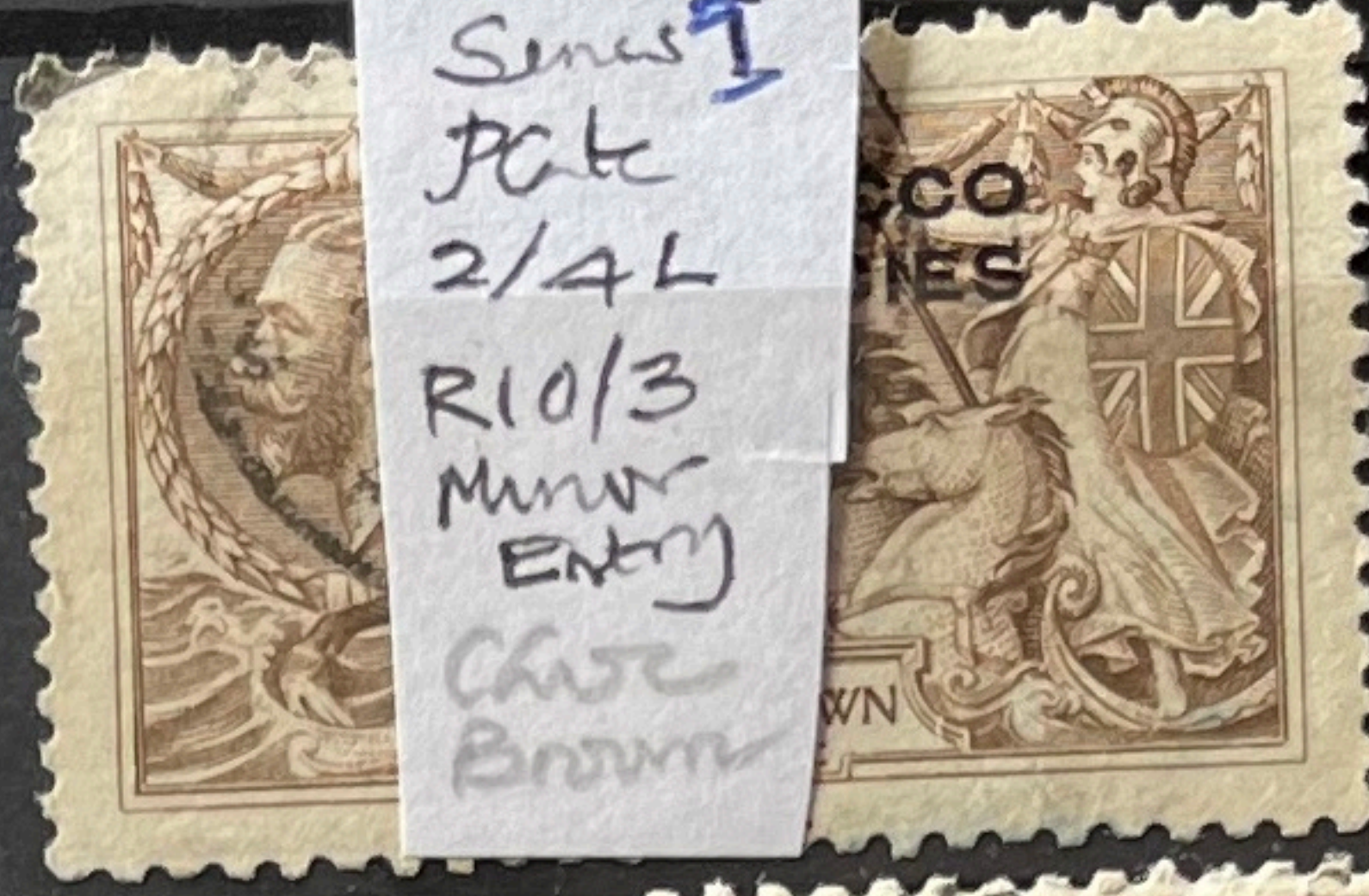
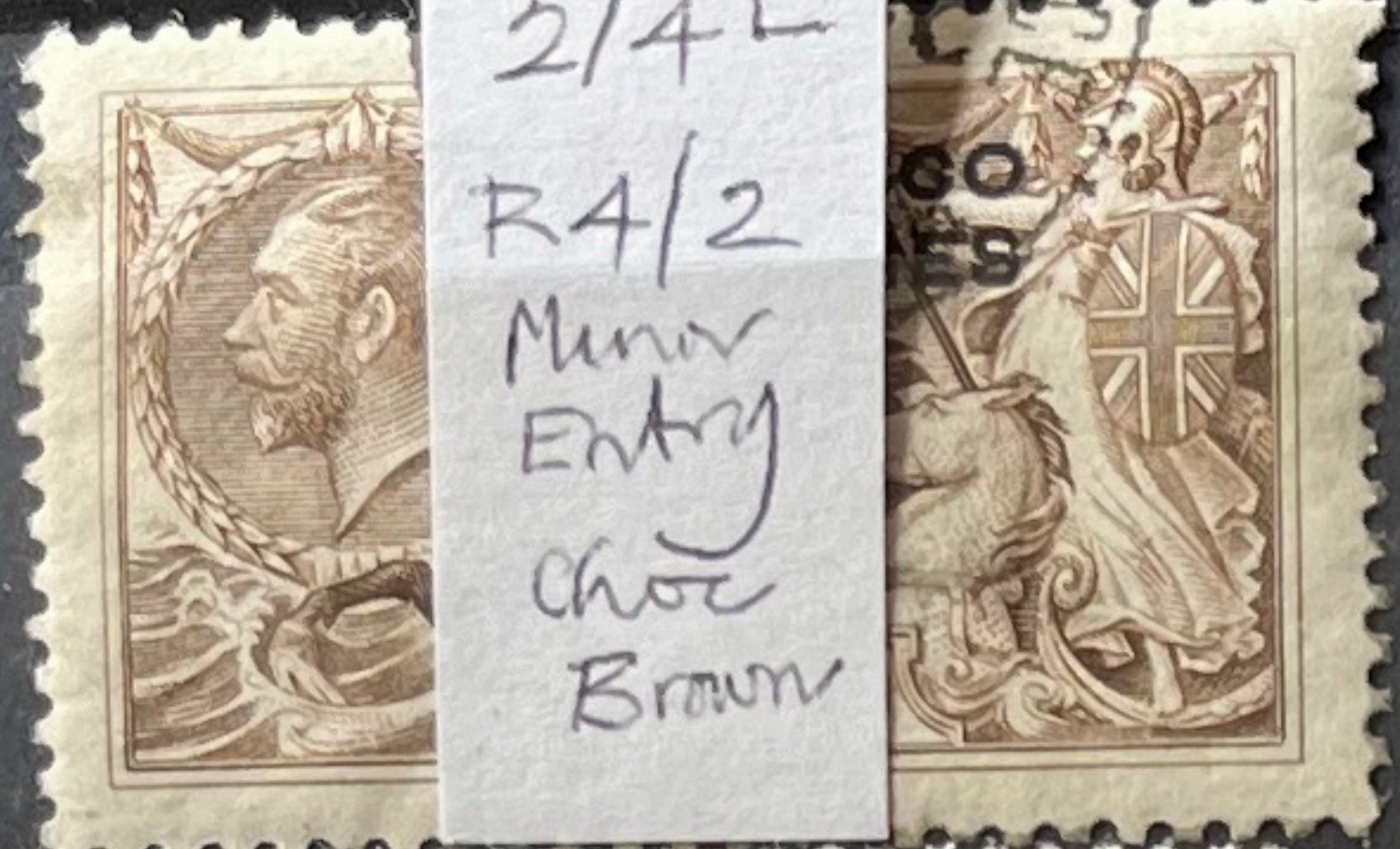


Bradbury  
Wilkinson

BW  
Series I  
PC-1/R  
(state 3)  
R 3/1  
Frankline  
variety  
Choc  
Brown



BW  
Series I  
Plate  
2/4L  
R 4/2  
Minor  
Entry  
Choc  
Brown



BW  
Series I  
Plate  
2/4L  
R 10/3  
Minor  
Entry  
Choc  
Brown



F  
Series W  
Plate  
2/4L  
Minor  
Entry  
Choc  
Brown

BW  
Series II  
Choc  
Brown



BW  
Series II  
Grey  
Brown  
PC  
8/10



20. B  
BW  
Series II  
Choc  
Brown



7  
26  
69  
69  
69  
69



Water-Cut  
Re-engraved

Re-Eng  
Choc  
Brown



Re-Eng  
Reddish  
Brown

Double



Re-Eng  
Bright  
Rose-  
Red



5973 & 74  
(450 & 451)  
used 60  
+ 2  
100  
  
No. 4  
used 2



MOROCCO AGENCIES  
- SPANISH  
MINT

Waterlow &  
Layton

N. 119

# MOROCCO

1914-26 - S.D. 'Sea-horses' surcharged in Spanish currency - shades ~  
Waterlow printings ~



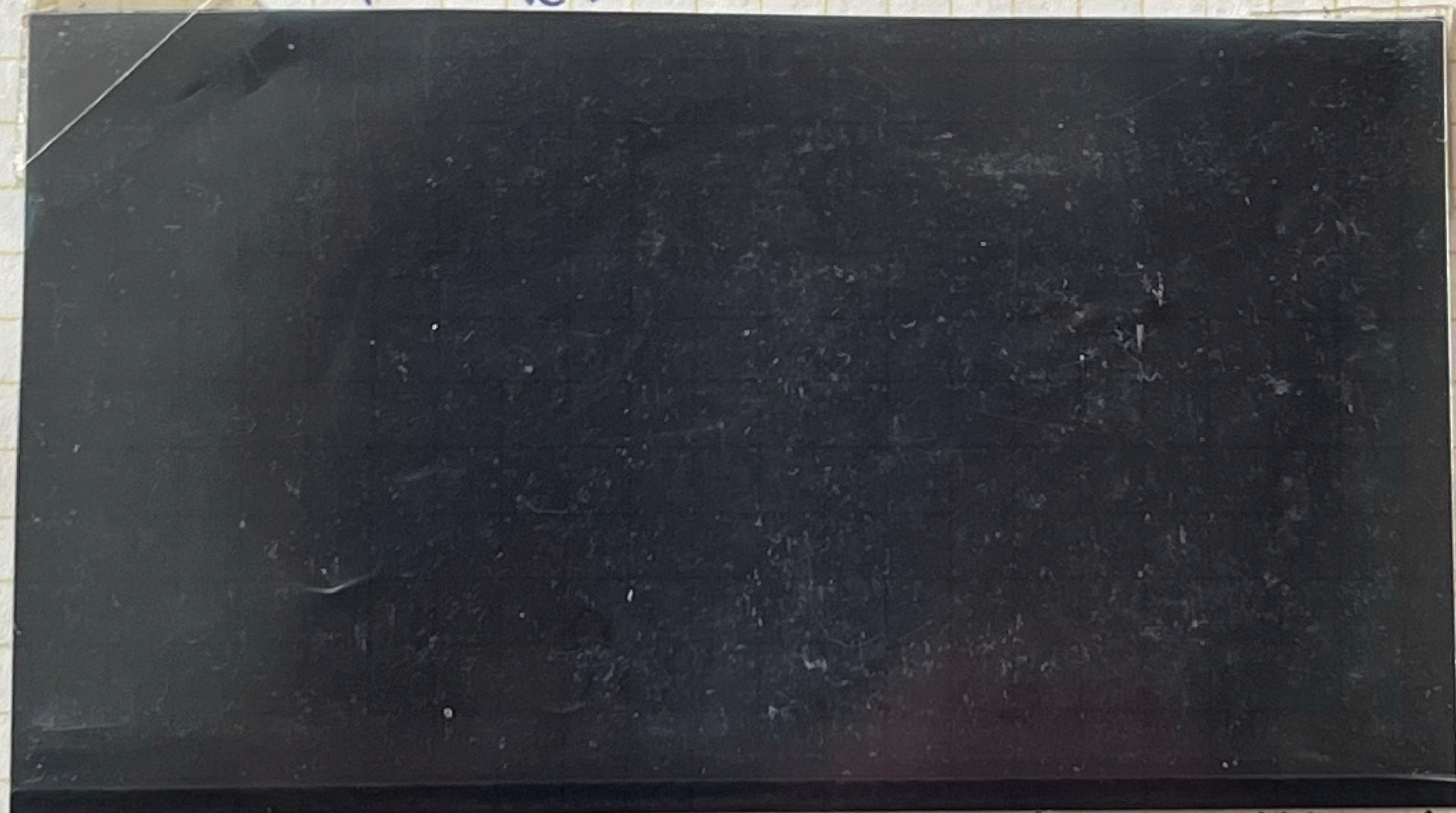
Rose Carmine-red



Deep carmine-red



Deep rose-carmine



Pale rose-carmine  
(P.S. certificate 114558)

Pale rose-carmine (R.P.S. certificate 117779)



Very pale carmine  
(ex Charles Nissen, Jan '64)



Rose-carmine - pair





The albino 'MOROCCO' is only  
just above the '6 PESETAS'.



Watt & Layton  
Rose  
Carmine



59136  
Mint  
£ 29  
59137  
(Pale)  
£ 130



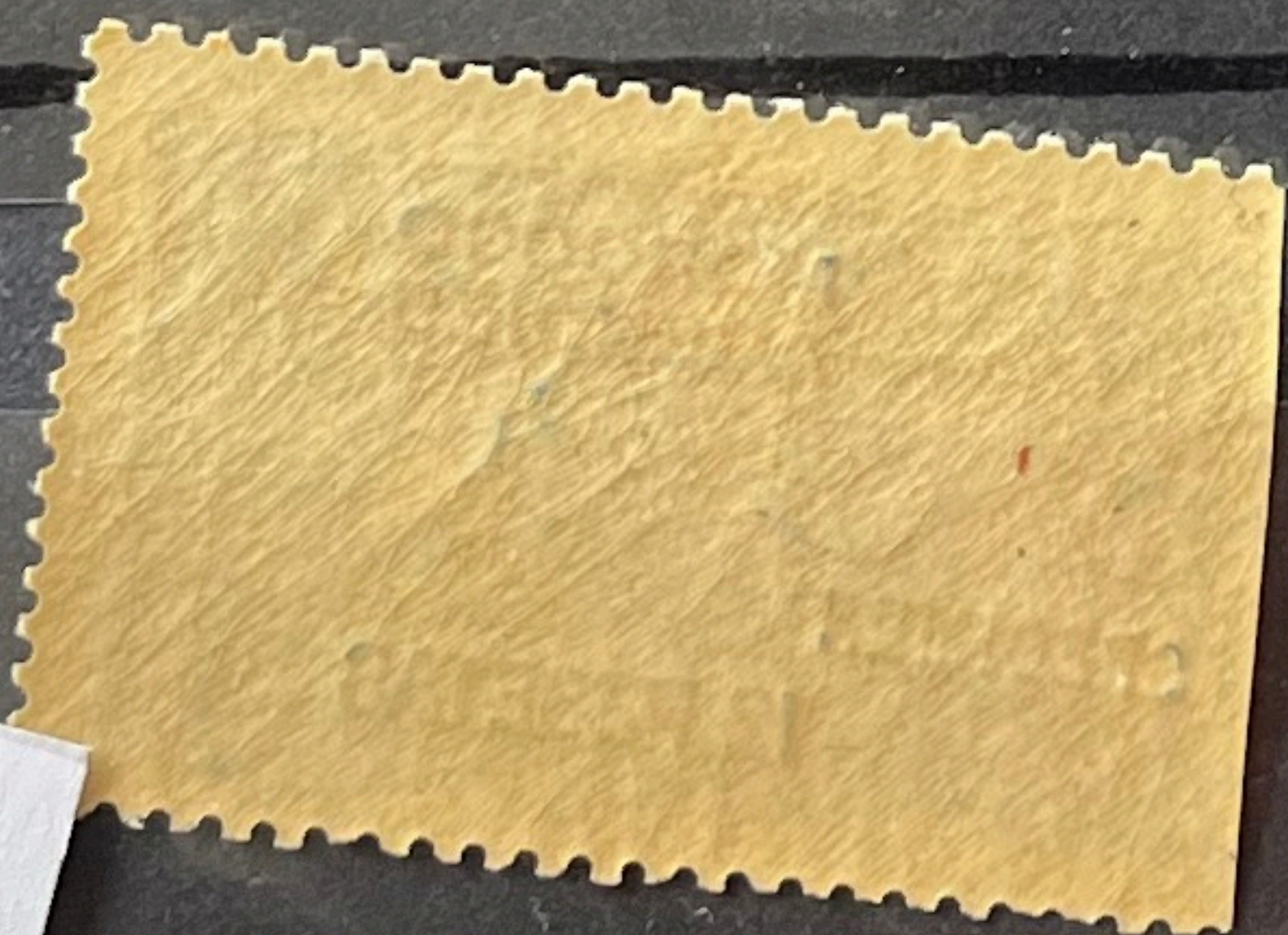
No. 136  
23  
137  
22  
Mint 2  
2



Walter  
Layton  
Indigo  
Blue



Walter  
Layton  
Indigo  
Blue  
Specimen

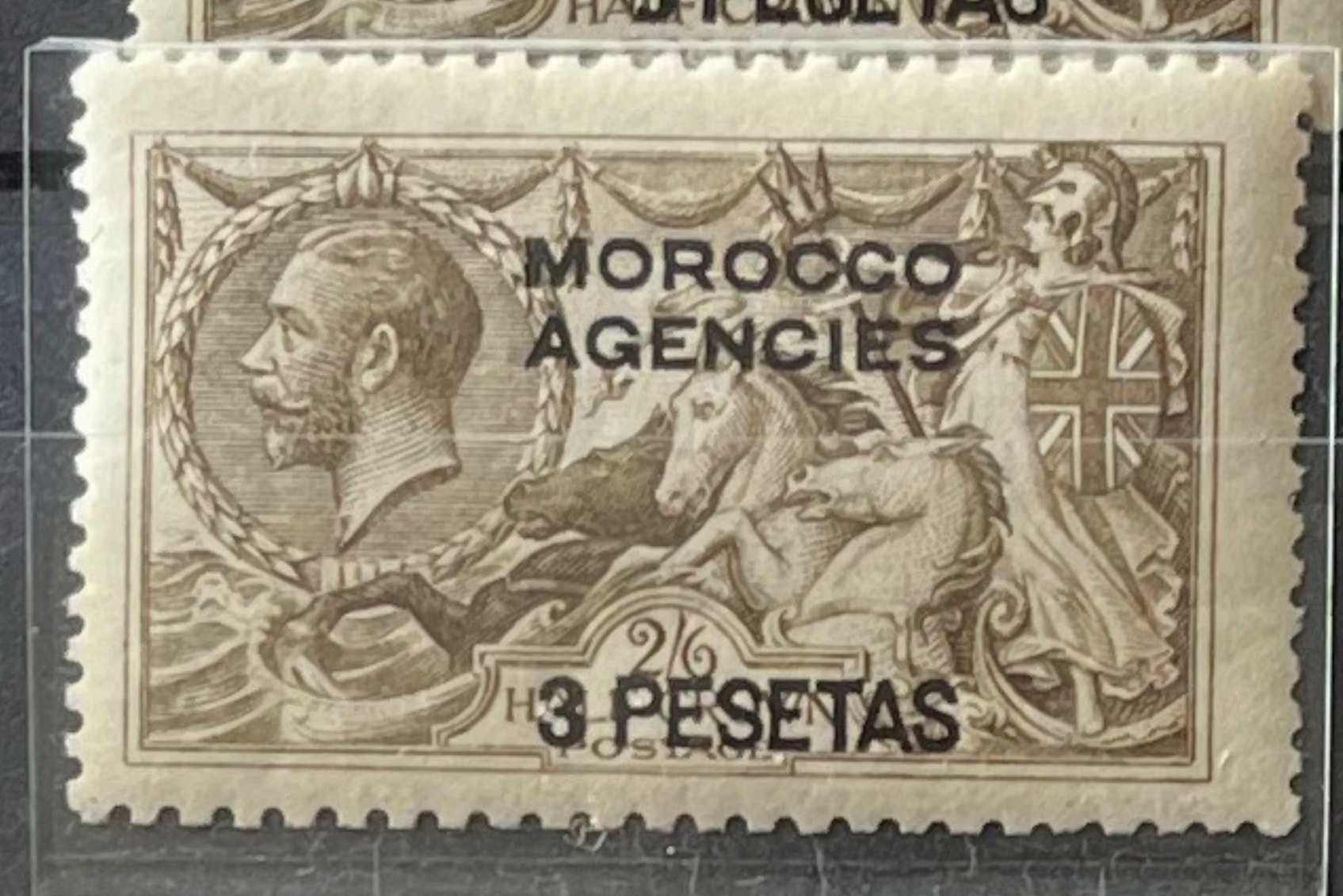
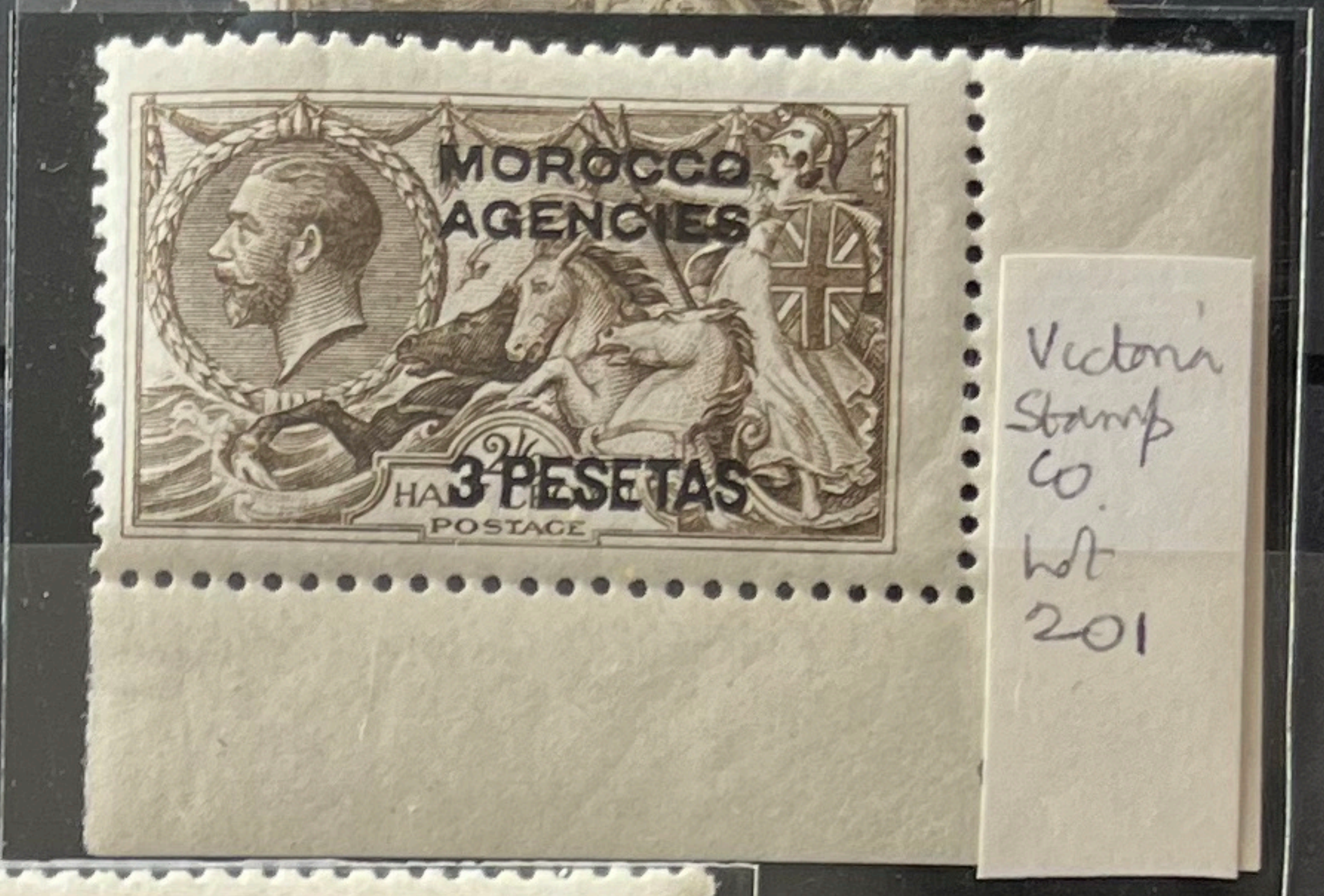


SG 1398  
Mint  
£ 100  
  
No.  
Mint 10









591392  
 Mint 140  
 F384  
 32  
 No. 19  
 Mint &  
 Value 1  
 (Blea) 1



DLR  
Blue



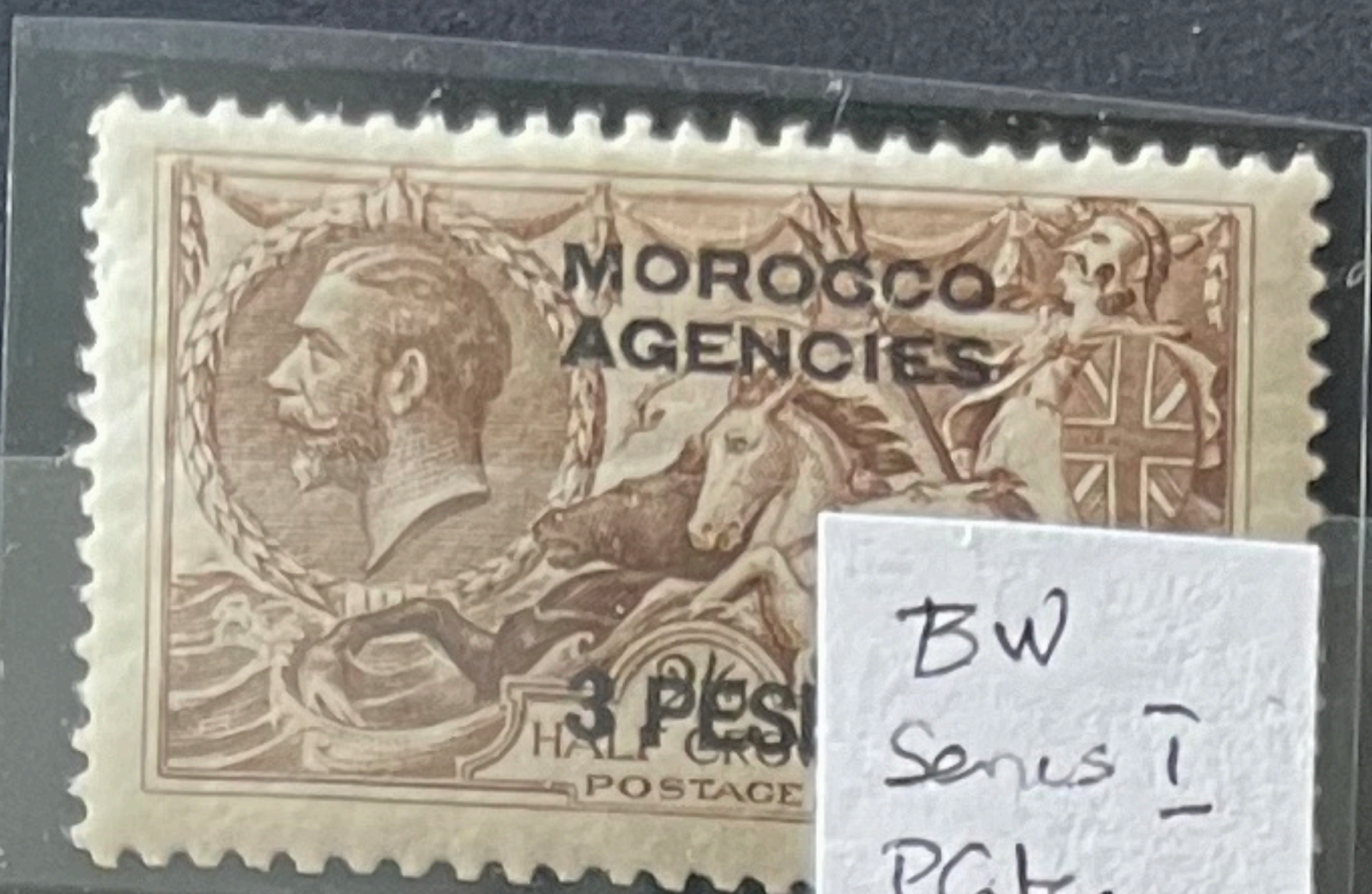
59141  
Mint  
£90  
No. 8  
Mint







BW  
Series I  
Plate  
-IR state 2  
Reddish  
Brown



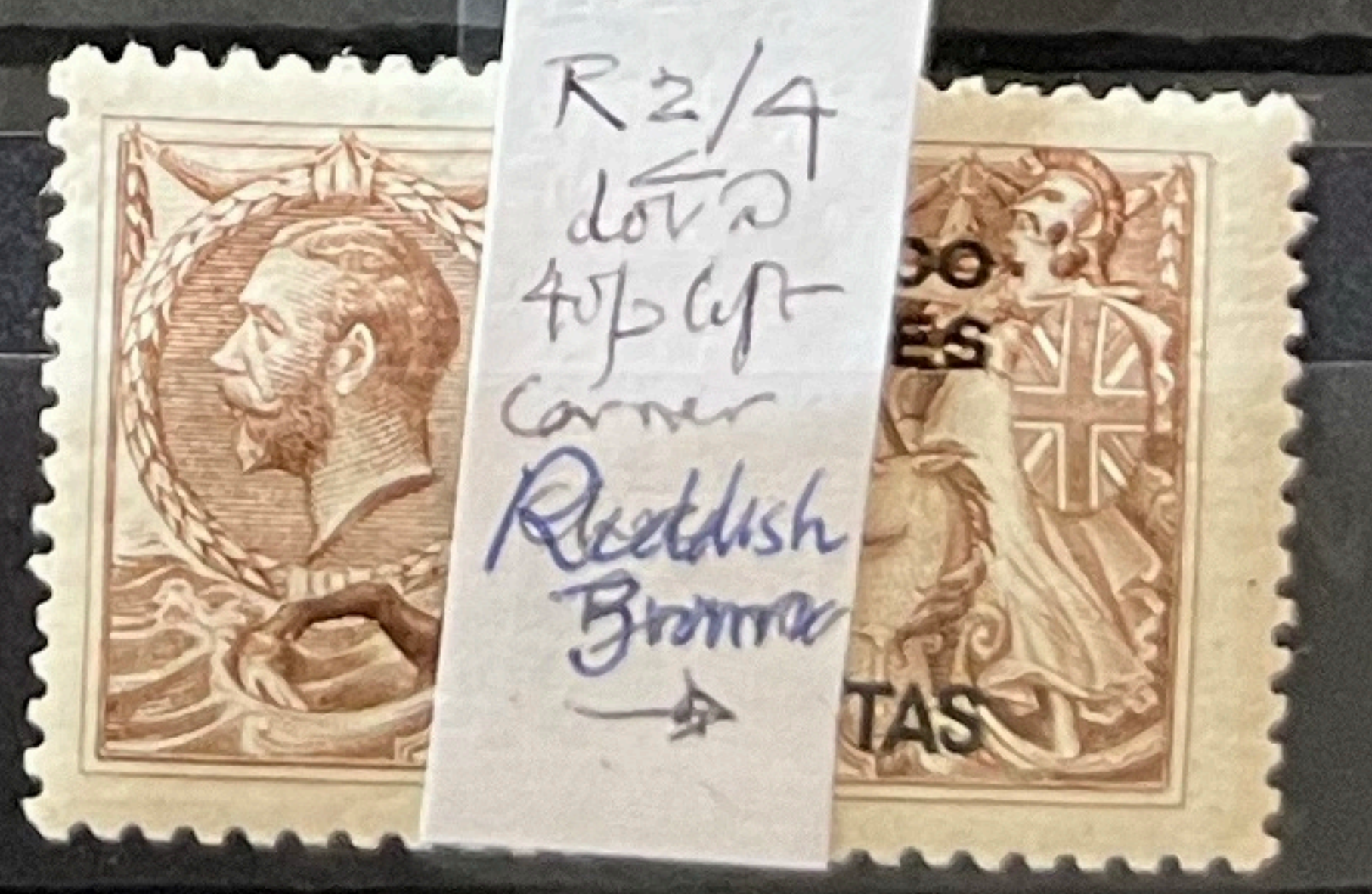
BW  
Series I  
Plate  
-IR  
State 2  
R3 note  
central dot  
between  
frame lines  
Reddish  
Brown  
→



BW  
Series I  
Plate  
-IR  
State 2  
Central  
dot  
between  
frame  
lines  
Row 3  
Reddish  
Brown  
(2)

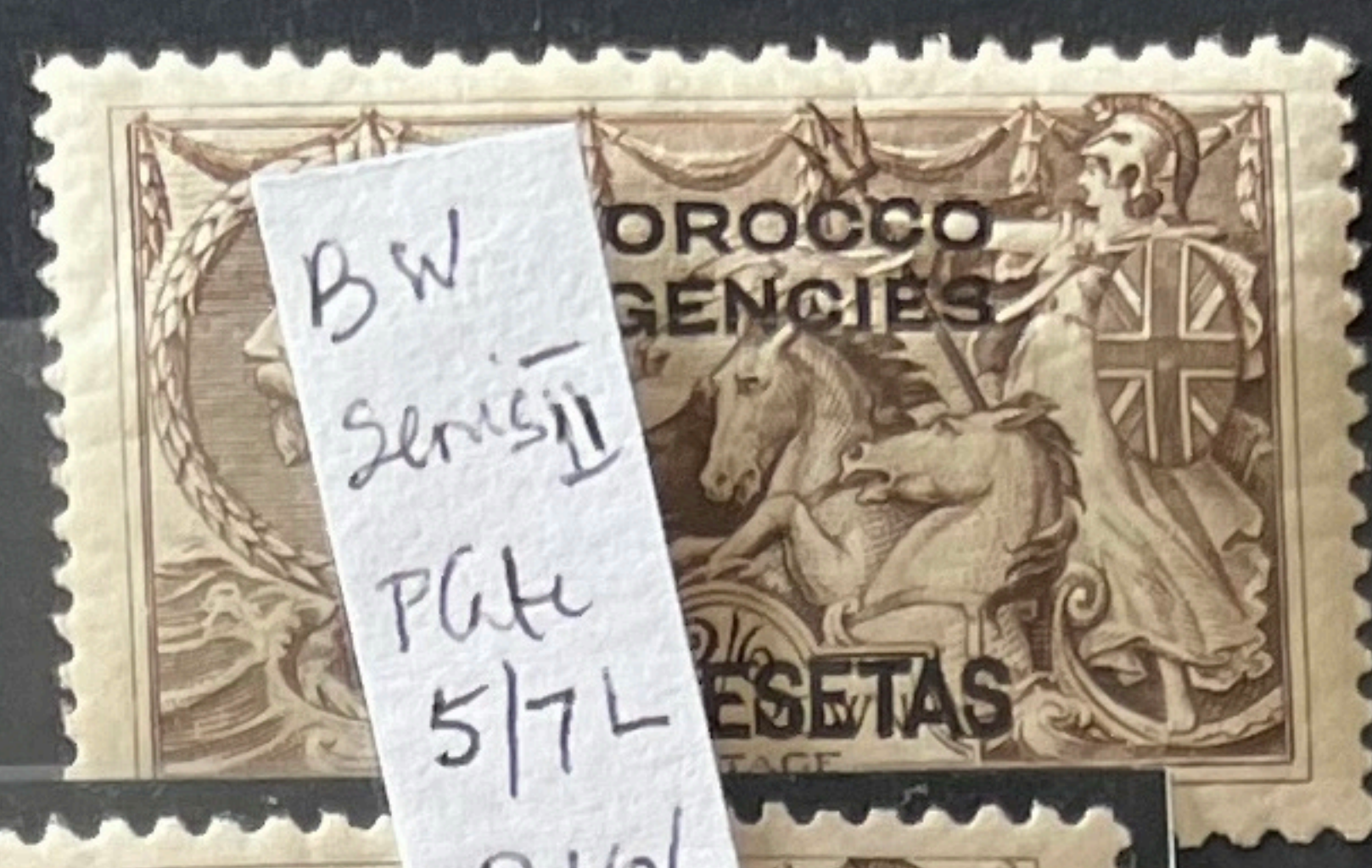


BW  
Series I  
Plate - IR  
State 2  
R2/A  
dot  
top left  
corner  
Reddish  
Brown  
→





BW  
Series II  
Plate  
5/7 Left  
Choc  
Brown



BW  
Series II  
Plate  
5/7L  
R10/2  
Minor  
Entry  
Choc  
Brown

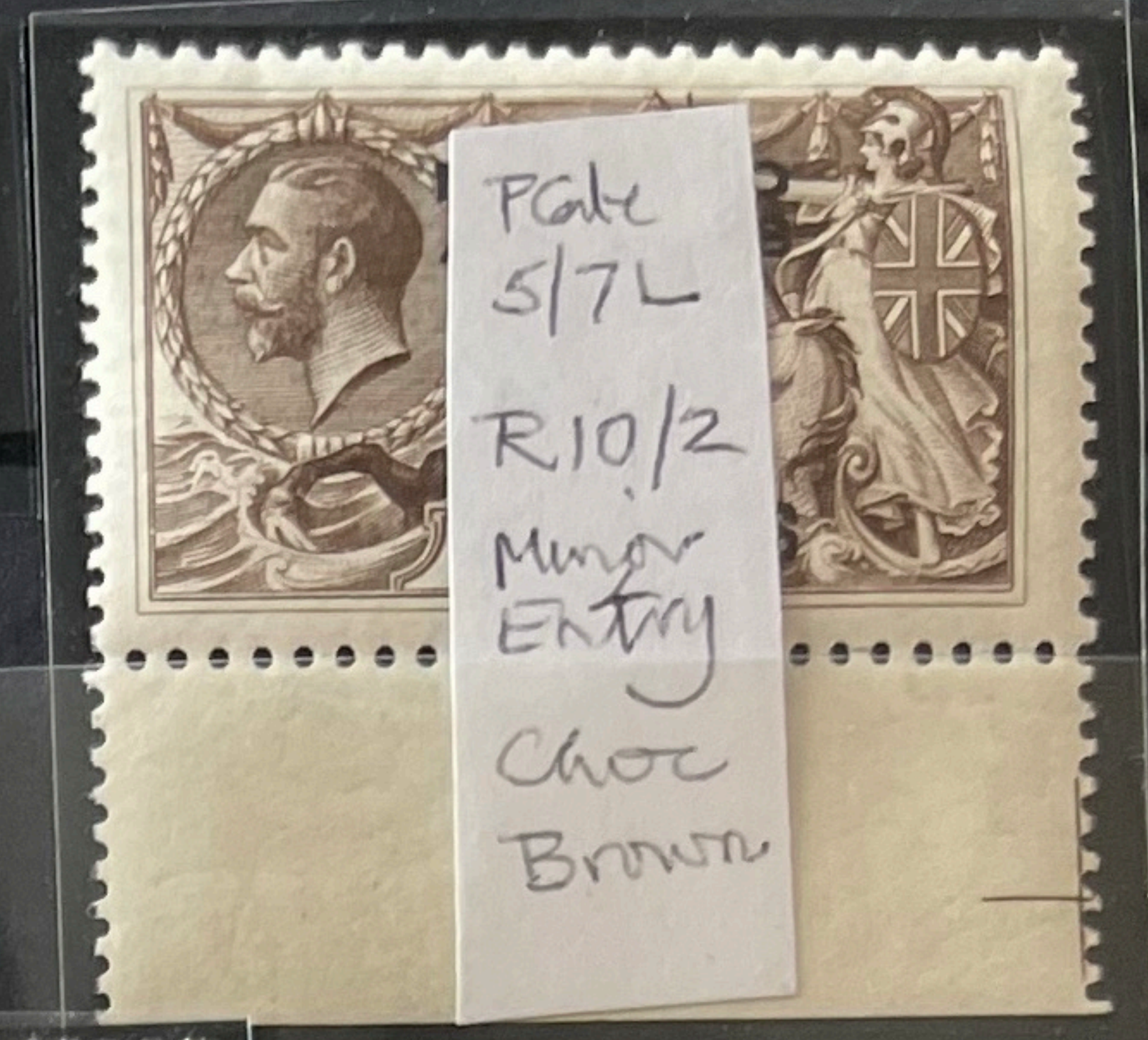
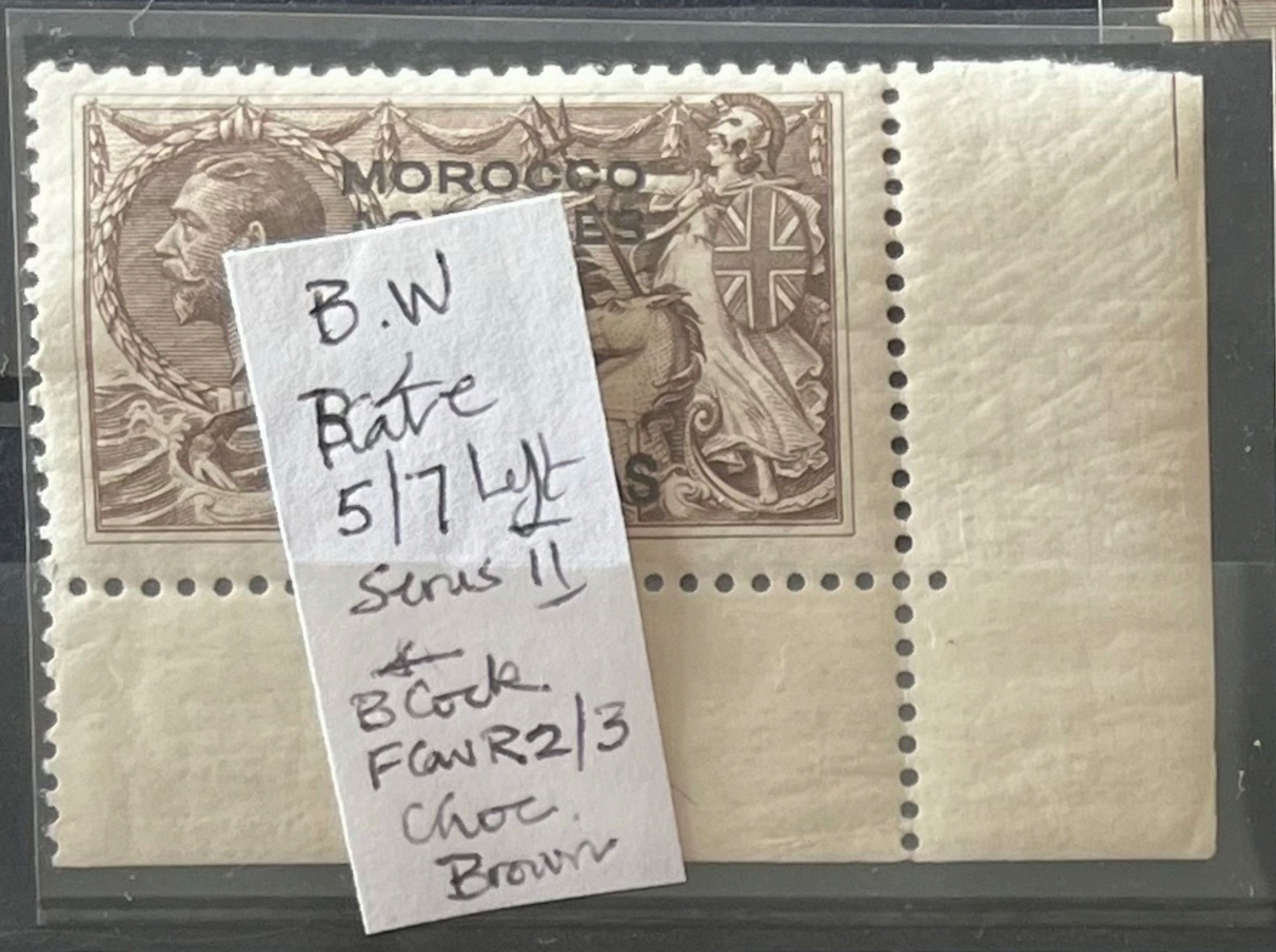


Plate  
5/7L  
R10/2  
Minor  
Entry  
Choc  
Brown



B.W  
Plate  
5/7 Left  
Series II  
B.Cock  
Faw R2/3  
Choc.  
Brown



No 130273

THE ROYAL PHILATELIC SOCIETY  
LONDON

41, Devonshire Place,  
London, W1N 1PE



Meeting of - 5 DEC 1984

In the OPINION of The EXPERT COMMITTEE the item  
submitted as

Morocco Agencies 1914-26 S.G. N<sup>o</sup> 142  
3 p. on 28 60 Chocolate-brown -  
Bradbury Wilkinson printing - unused -  
is genuine.

Observations

*Lahee*  
Chairman

130273



BW  
Plate  
5/7L  
Series II  
Choc  
Brown

Sg 142  
Mint  
€ 23  
No. 37  
Mint  
BR(4) 7  
BR(26) 1