

1867—continued

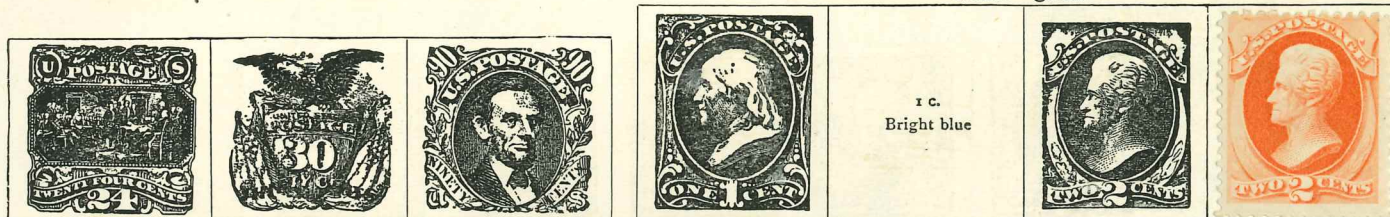
10 c. Green	12 c. Black	15 c. Black	24 c. Lilac	30 c. Orange	90 c. Blue
----------------	----------------	----------------	----------------	-----------------	---------------

1869. Perf. With embossed grille

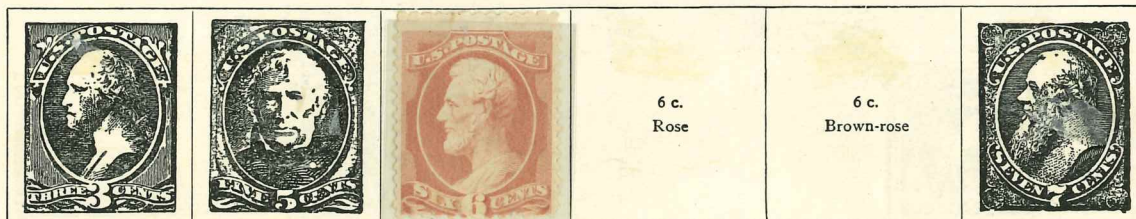


114 Brown-yellow 115 b Brown 116 Ultramarine Ultramarine Orange 19 Green Blue and brown

1870-71. Perf.
Without "grille"



Purple and green Carmine and blue Black and carmine Blue 1 c. Bright blue 593 Brown 180 8



149 A/B Green 181 Blue 209 Carmine 150 w A 6 c. Rose 6 c. Brown-rose 151 A Vermilion



163 a B Brown 152 A 153 A Purple Orange 155 Violet Black Carmine

With "grille"

1 c. Blue	2 c. Brown	3 c. Green	6 c. Carmine	7 c. Vermilion	10 c. Brown	12 c. Purple
--------------	---------------	---------------	-----------------	-------------------	----------------	-----------------

157 A

15 c. Orange	24 c. Violet	30 c. Black	90 c. Carmine
-----------------	-----------------	----------------	------------------

1882. Perf.



1883. Perf.



215 Brown 213 w Brown-red Green






UNITED STATES—continued


1887. Perf. As 1870-71 1888. Colours changed As 1882 As 1883

 Blue		3 c. Vermilion	30 c. Chestnut	90 c. Violet	5 c. Blue	 4 c. Carmine
---	--	-------------------	-------------------	-----------------	--------------	--

147


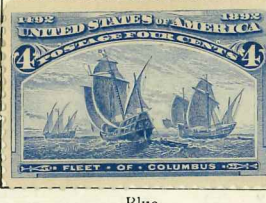

1890. Perf.

 Blue	1 c. Ultramarine	 2 c. Carmine	2 c. Lake	 3 c. Violet	 4 c. Yellow-brown	 5 c. Brown
---	---------------------	--	--------------	---	---	--

5 c. Chestnut	 6 c. Brown-red	 8 c. Purple	 10 c. Green	 15 c. Blue	 30 c. Black	 90 c. Orange
------------------	--	---	---	--	---	--

1893. "Columbian Exposition" issue. Perf.

 1 c. Deep blue	 2 c. Purple	 3 c. Green
--	---	---

 4 c. Blue	 5 c. Brown	 6 c. Violet
--	--	---

 8 c. Claret	 10 c. Green	 15 c. Brown-orange
--	---	--

 50 c. Slate-blue	 51 c. Scarlet	 52 c. Lake	 53 c. Yellow-green
---	---	--	---



UNITED STATES—continued

1893—continued

1894. No wmk. Perf. Similar to 1890, but with triangles added in corners



Carmine

Black

Blue

Scarlet



Violet

Sepia

Chestnut

Red-brown

Brown-purple



Green

Indigo

Orange

Black

Blue

Green

1895. As last, but wmk. "U. S. P. S." in sheet

1 c. Blue	1 c. Prussian blue	2 c. Carmine	3 c. Pink	4 c. Violet	5 c. Sepia	5 c. Chestnut
--------------	-----------------------	-----------------	--------------	----------------	---------------	------------------

6 c. Red-brown	8 c. Purple	8 c. Brown-purple	10 c. Green	15 c. Indigo	50 c. Orange
-------------------	----------------	----------------------	----------------	-----------------	-----------------

1898. Colours changed

\$1.00 Black	\$2.00 Blue	\$5.00 Green	1 c. Green	2 c. Vermillion	4 c. Brown
-----------------	----------------	-----------------	---------------	--------------------	---------------

4 c. Marone	5 c. Blue	6 c. Lake	10 c. Brown	10 c. Chestnut	15 c. Olive
----------------	--------------	--------------	----------------	-------------------	----------------

UNITED STATES—continued

1898. Perf. "Trans-Mississippi Exposition" issue



Green

Orange

Purple-brown

Grey-violet

Sage-green

Black

1901. Perf. Centres in black. "Pan-American Exposition" issue



Orange-brown

Green

Carmine

Brown

Blue

1902. Perf.



Purple-brown

Yellow-brown

Yellow-green

Carmine

Purple



Brown

Blue

Lake

Grey-violet

Brown

Purple-brown

1903. Perf.



Orange

Black

Blue

Blue-green

Carmine

1904. Perf. "St. Louis Exhibition" issue



Green

Carmine

Violet

Blue

Yellow-brown

- 330/4

UNITED STATES—continued

1189

1907. Perf. "Jamestown Exhibition" issue

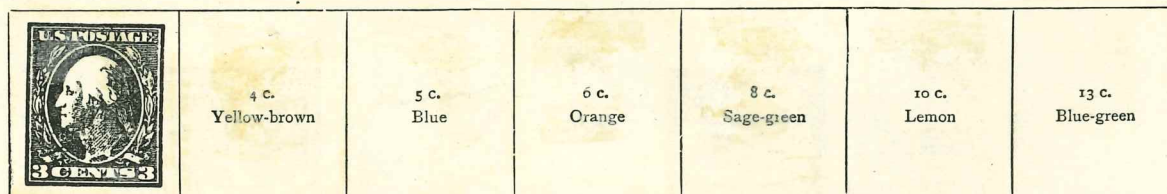


Green 336 Carmine Blue

1908. Wmk. "U.S.P.S." in sheet. Perf.

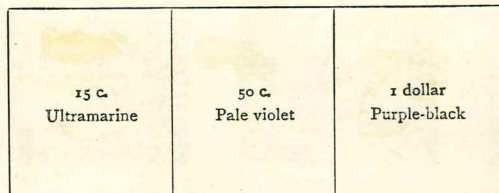


338a Green 339 Carmine



Violet-mauve 340 511 513 344 345 346

1909. Commemorative stamps. Perf. Hudson-Fulton



347 349

1909. Perf.



374 Lake

Seattle Exhibition

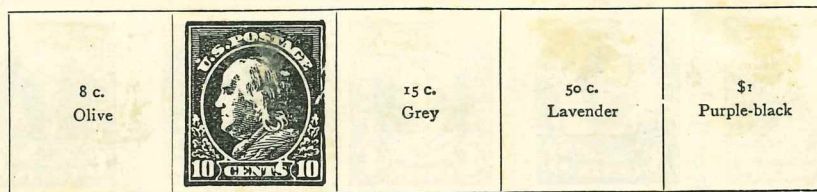


378 Carmine-lake



379 Carmine-lake

1912. Perf.



409a 411 Yellow 413 524 405

1913. Issue commemorating the opening of the Panama Canal



423 Green Carmine 425 Blue Yellow

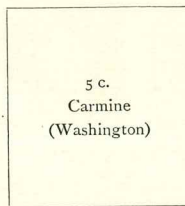
1914



514 516 519 522 523

UNITED STATES—continued

Error



5 c.
Carmine
(Washington)

1917. Perf.



518 11 c., myrtle

520

Black and red

\$5
Black and green

1918. Perf.



6 c.
Orange

24 c.
Red and blue

517/6

Green

1919. Perf.



544

Violet

1919. Surface-printed. Perf.



547

549

550

Violet

1920. Perf.



554/5

Green

Carmine

558

Blue

1922. Perf.



11 x 12 ?

560

Green

Carmine

Violet

Brown

Blue

Orange

Black



569

Olive

564

Rose

Yellow

Pale blue

Plum

Blue

Grey



Carmine

Green

Sepia

Purple

Brown

Blue

Blue and carmine

UNITED STATES—continued

1191

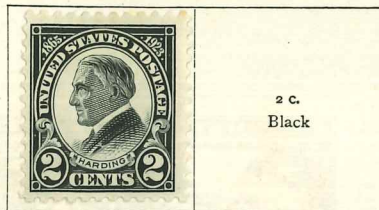
1922. Imperf.



350

351

Perf. 1923 Imperf.



614 Black

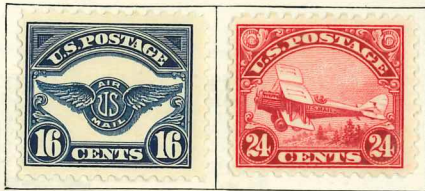
1923. Perf.



A 614/2 Green

616

1924. Perf.



Indigo

Carmine



418/20

Green

Carmine

Blue

1925. Perf.



Black and carmine

Black and blue

624/5



621/3

Green

Carmine

Blue

Perf.



569 Sepia

Perf.



561/2

Imperf.



1925-26. Perf.



626 Green

627

Black

1926. Perf.



628

Carmine

Perf.



A 628/30

Indigo

15 c.
Brown

20 c.
Green

UNITED STATES—continued

1926. Perf.



644 Carmine

645 Violet

646 Blue

1927. Perf.



646 Carmine

1928. Perf.

Overprinted



648 Carmine

649 Blue and Carmine

651

649

650

652

Carmine

1929. Perf.



653

Blue

678

Carmine

680

Carmine

681

Carmine

682

Carmine

654

Black and Carmine

1930. Perf.



687/9

Green

Brown

Blue



683

Carmine

684

Carmine

A 684

Purple

688

Brown

689

Carmine

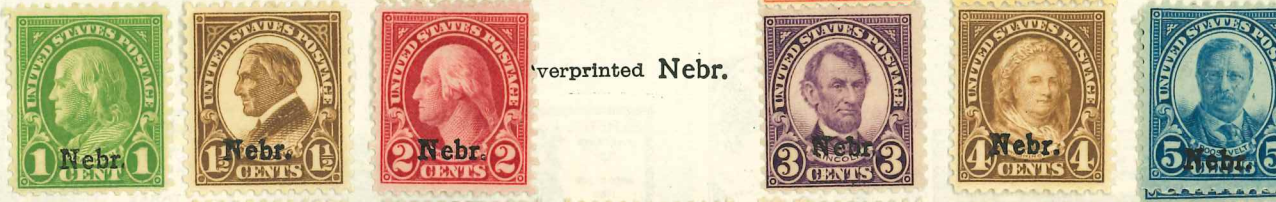
690

Carmine





UNITED STATES POSTAGE
As 1922
reprinted Kans.



reprinted Nebr.



1930. Perf.

1931. Perf.

1932. Perf.



21089

488 Brown 491 Carmine 702 Black and red Black and carmine 716 Carmine 717 Carmine

1932. Perf.



704/5 Sepia Green Brown Carmine Violet Brown Blue Orange

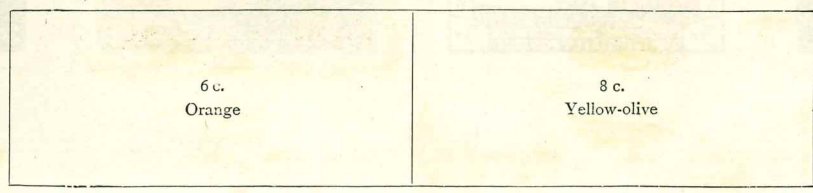


Black Olive Vermilion Yellow Violet Blue

1932-34. Air stamps as 1930



720 Violet



6c. Orange

8c. Yellow-olive

A6856



723 Violet

UNITED STATES—continued

1932. Perf.



Violet



Violet



Yellow-green



Violet



Violet



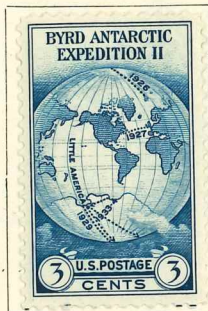
Violet

1933. Perf.

Air stamp



Green



Blue



Blue



Carmine

1934. Perf.



1934. Various views. Perf.



Green



Vermilion



Violet



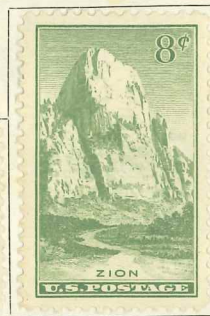
Brown



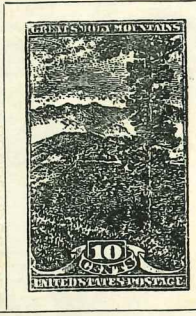
Ultramarine



Black



Vermilion



Grey

1935. Perf.



Violet



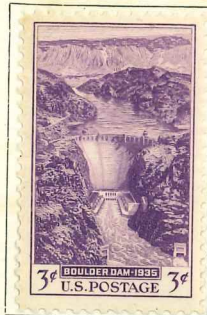
Violet

UNITED STATES—continued

1195

1935—continued

1936. Perf.



772 Violet



Air stamp

Greenish blue



775 Violet



Violet



Violet



Violet



Violet



UNDER AUTHORITY OF
JAMES A. FARLEY, POSTMASTER GENERAL

PRINTED BY THE TREASURY DEPARTMENT,
BUREAU OF ENGRAVING AND PRINTING

BYRD ANTARCTIC EXPEDITION II

BYRD ANTARCTIC EXPEDITION II

BYRD ANTARCTIC EXPEDITION II

BYRD ANTARCTIC EXPEDITION II

BYRD ANTARCTIC EXPEDITION II

BYRD ANTARCTIC EXPEDITION II

U.S. POSTAGE 3 CENTS

U.S. POSTAGE 3 CENTS

U.S. POSTAGE 3 CENTS

U.S. POSTAGE 3 CENTS

U.S. POSTAGE 3 CENTS

U.S. POSTAGE 3 CENTS

IN COMPLIMENT TO THE
NATIONAL STAMP EXHIBITION OF 1934

NEW YORK, N.Y., FEBRUARY 10-18, 1934
PLATE NUMBER 21184



E 452



E 648



E 649



E 650



54 627

M 372 issued without gum



737



736



734



731



A 245 (1938)



732



845



846



844



0225



0204



0214

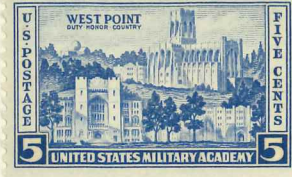
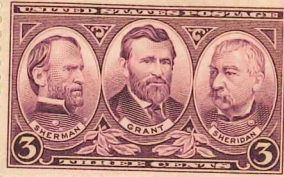


0189

Can't 1500 as normal, all specimen opt. no gum as usual. \$110



751/2 (1936)



151/2



0227/31



0261

\$1194.