

POSTAGE STAMP ALBUM

203978
816552
203978

EUROPE

1250 11

ENGLAND

Envelopes.



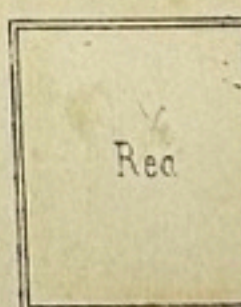
ISSUE OF 1862.



MALTA



IONIAN ISLES



AUSTRIA

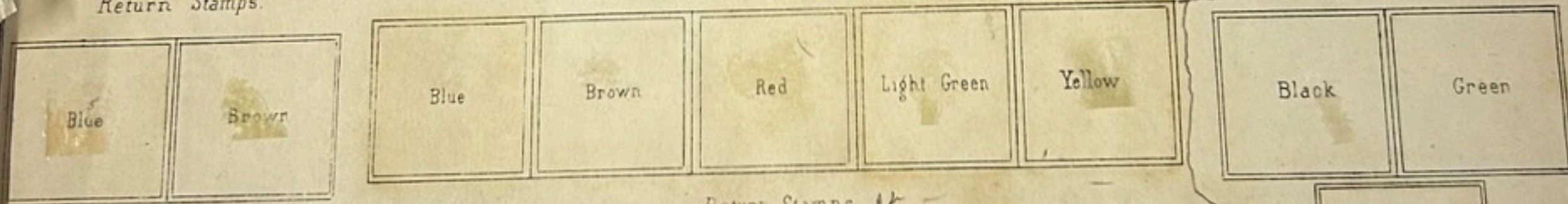
First Issue.



Second Issue.

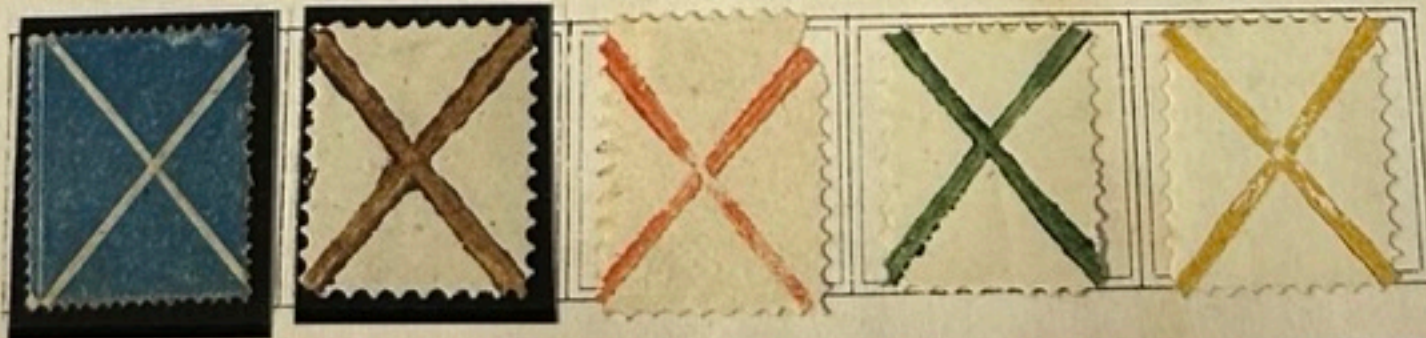
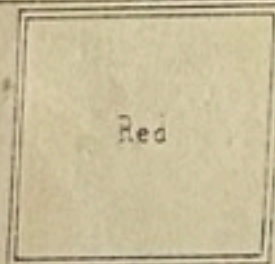


Third Issue.



Return Stamps.

Return Stamps.



Return Stamps. No



205

EUROPE

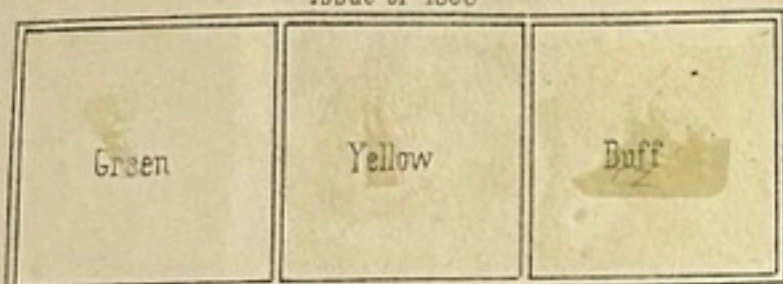
210 25

GERMANIC CONFEDERATION

Grand-Duchy of Baden.

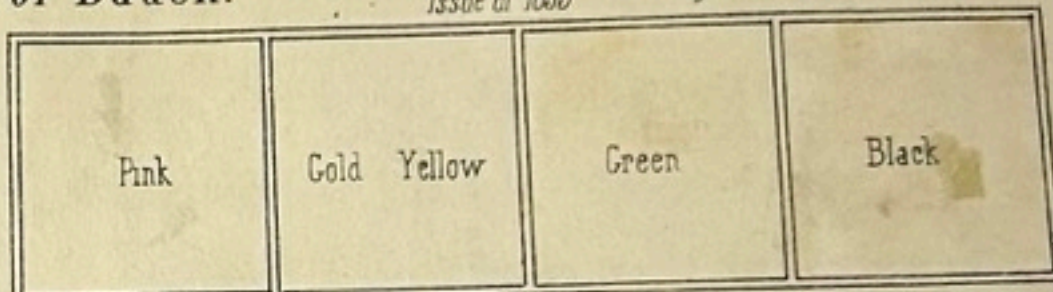
Issue of 1850

300

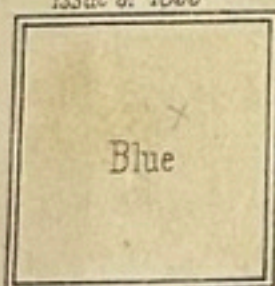


Issue of 1855

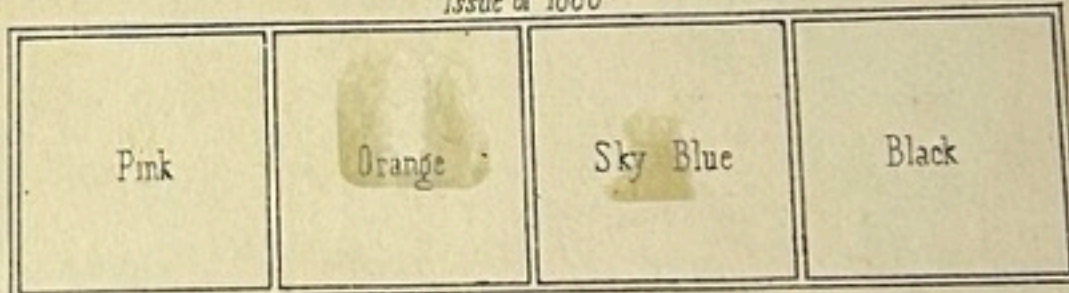
75



Issue of 1858



Issue of 1860



30

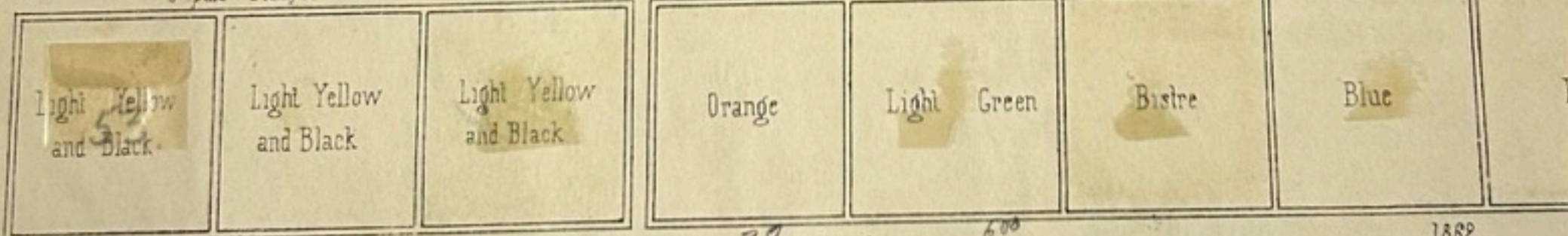
U. paid Stamps.

Issue of 1862

15

Issue of 1862

15



50

30 Envelopes.

600

1862



JL

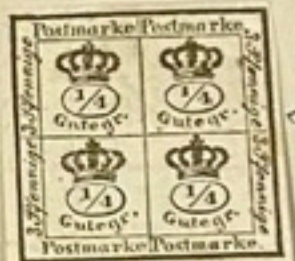
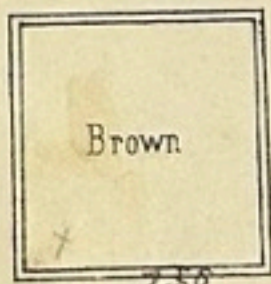
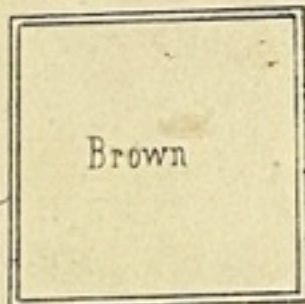
2600

GERMANIC CONFEDERATION

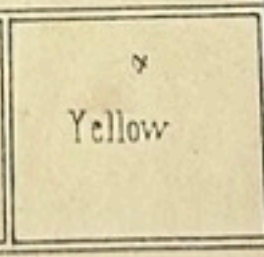
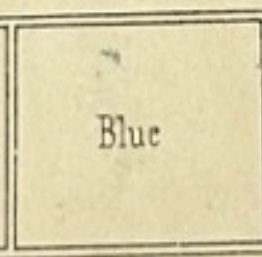
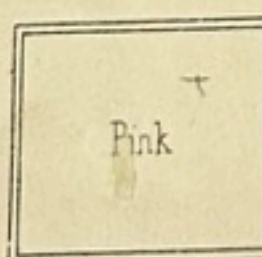
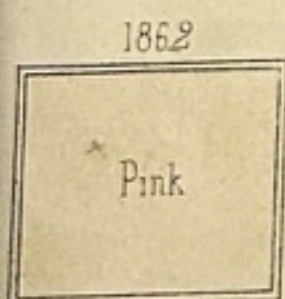
Brunswick.
(Duchy)



800



7

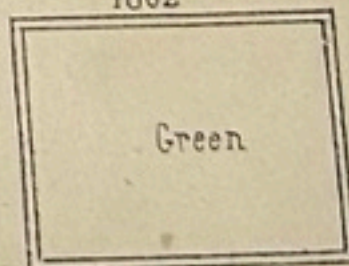
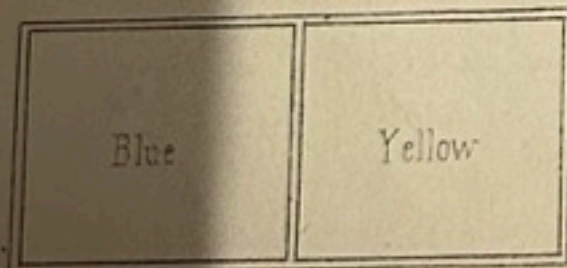


City of Brunswick



1862

Envelopes. 700



GERMANIC CONFEDERATION

Hamburg

Issue of 1862



Issue of 1862



GERMANIC CONFEDERATION

Hamburg (Continued)

Issue of 1863



Issue of 1863



GERMANIC CONFEDERATION.

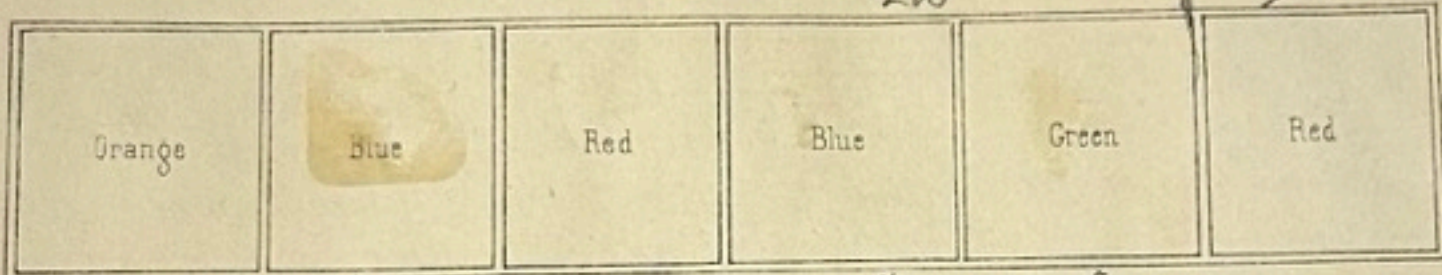
Hanover

2200

200

200

City of Hanover



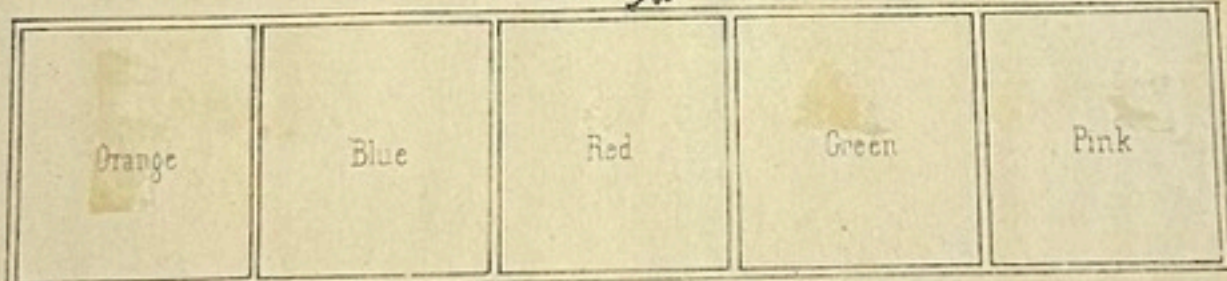
City of Hanover



Issue of 1853

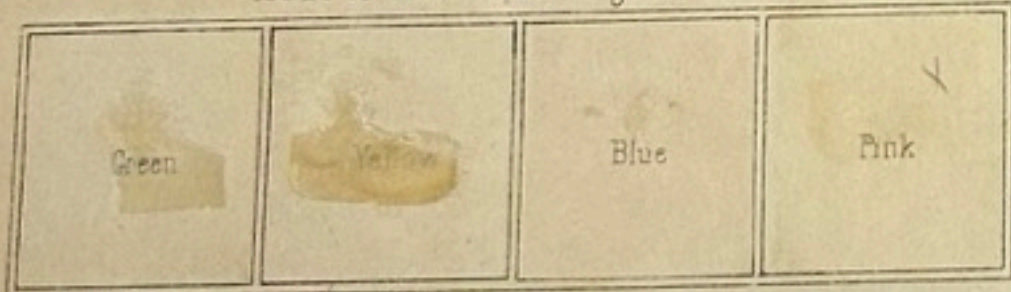
50

9



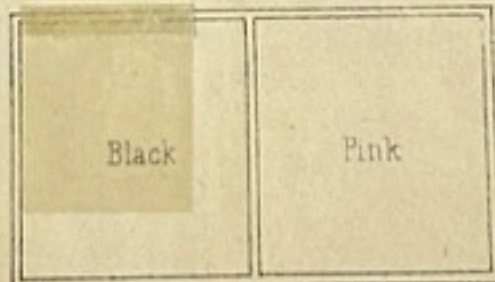
25

Issue of 1859 with king's head.

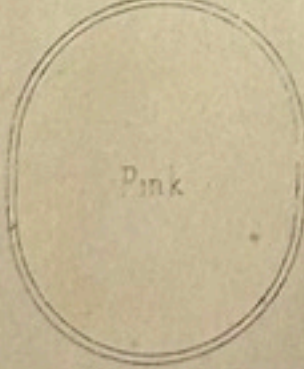


Issue of 1862.

100



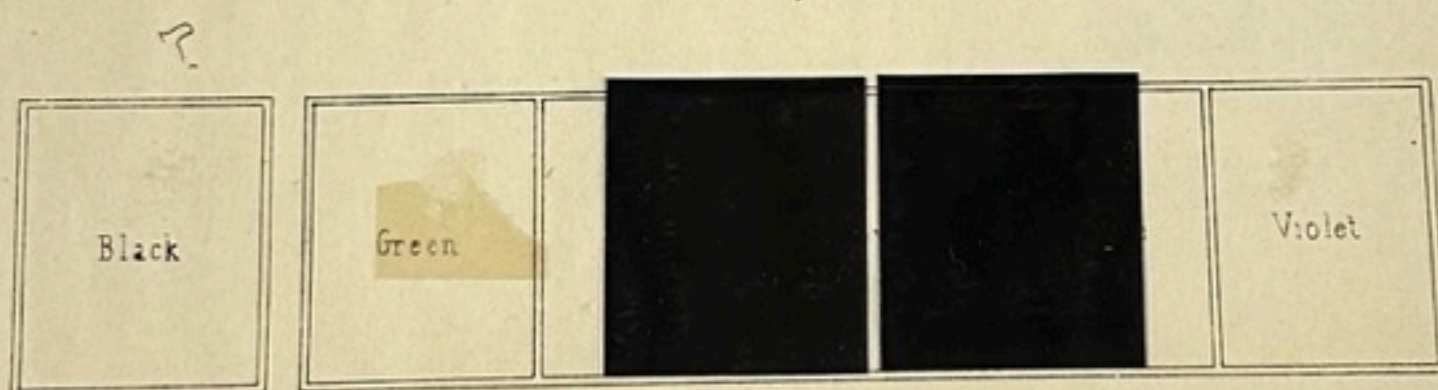
Envelopes



GERMANIC CONFEDERATION.

45

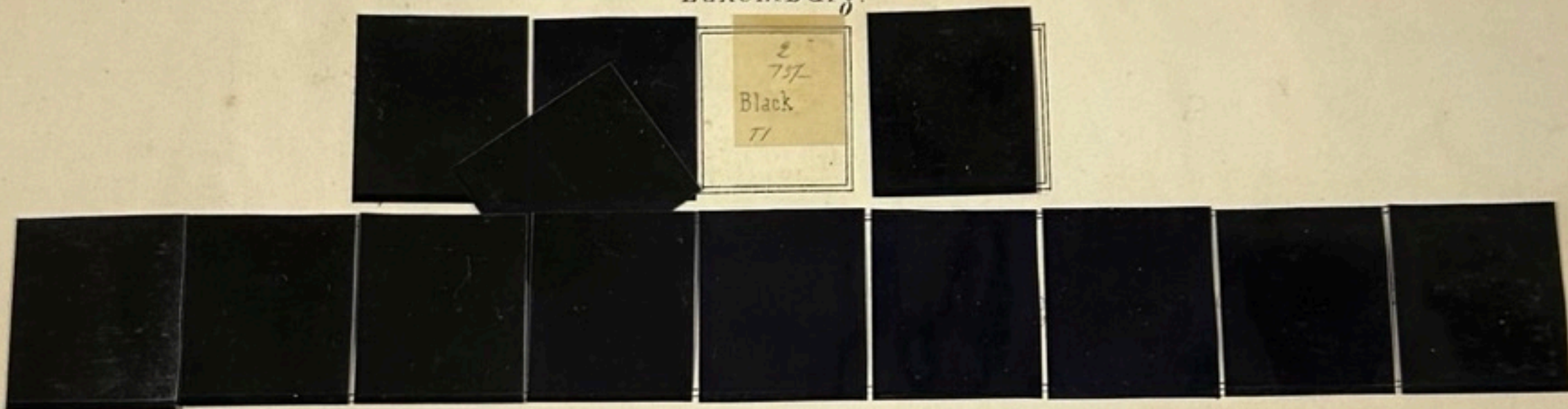
Lubeck
(Free City)



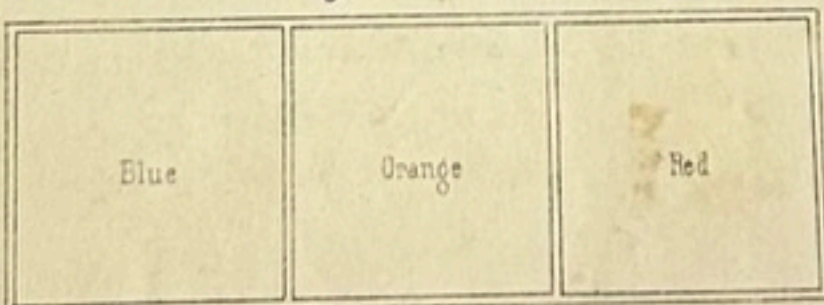
72

GERMANIC CONFEDERATION.

Luxemburg.



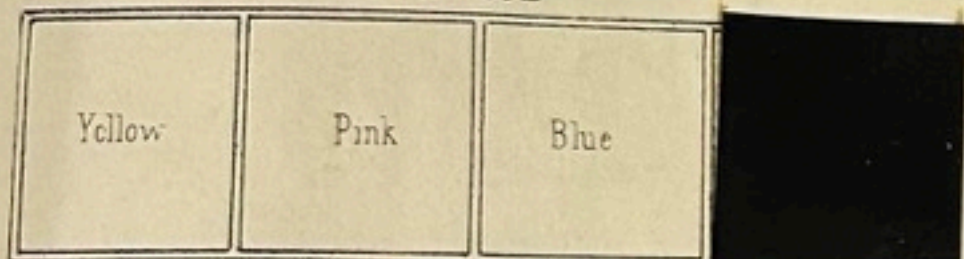
Mecklenberg Schwerin. 800



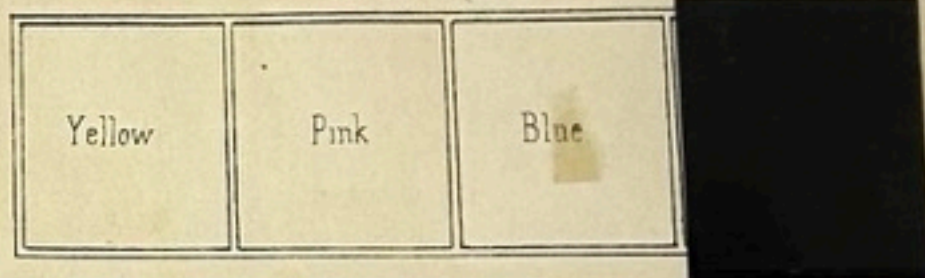
GERMANIC CONFEDERATION. 8, 218

Oldenburg (Grand Duchy)

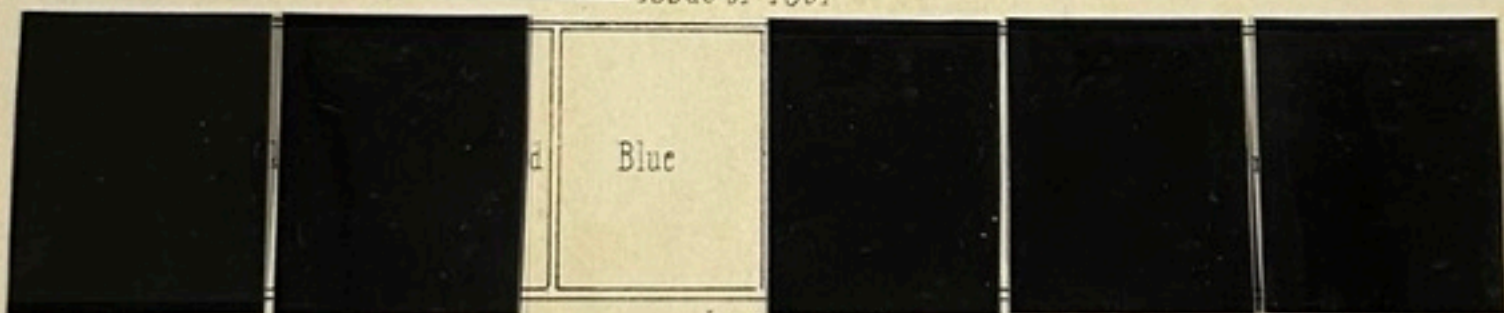
Issue of 1852 1300



Issue of 1860 4600

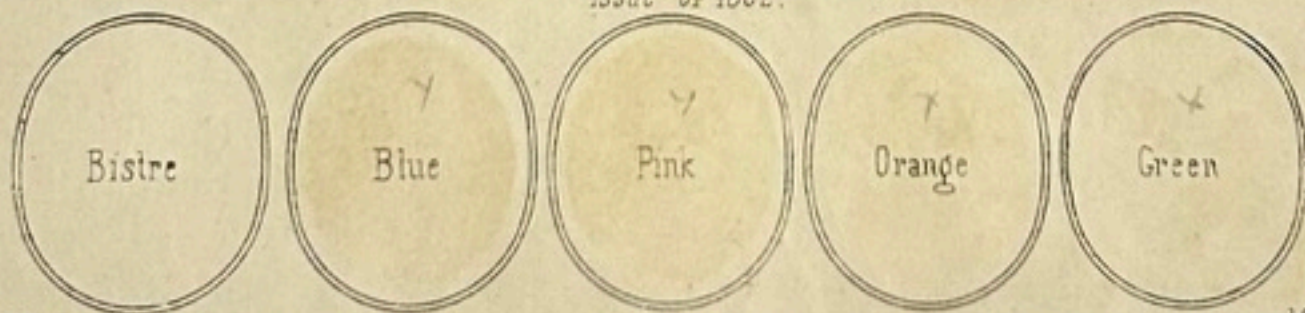


Issue of 1861



2300

Issue of 1862



1861

Envelopes

1862



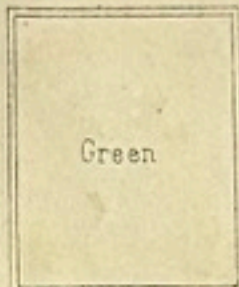
EUROPE

45

GERMANIC CONFEDERATION .

87,700

Saxony



1K

Frederick Augustus 100

20

Gold Yellow	Blue	Pink	Light Gray
-------------	------	------	------------

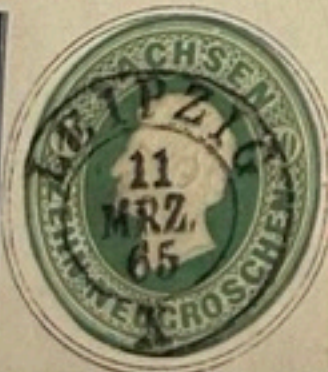
John 350

Sky Blue	Orange	Gold Yellow	Deep Blue	Pink	Light Gray
----------	--------	-------------	-----------	------	------------



Envelopes

1862



GERMANIC CONFEDERATION.

3,300

Thurn and Taxis Post-Office (Northern States)

Light Yellow v	Pink	Blue	Light Blue	Water-green	Flesh-colour	Brown Yellow
-------------------	------	------	------------	-------------	--------------	--------------

1300

[Black]	Lilac	Red	Pink	Sky-Blue x	Light-Green	Red
---------	-------	-----	------	---------------	-------------	-----

1150

Issue of 1862. 350

Bistre	Blue x	Pink x	Vermilion
--------	-----------	-----------	-----------

Envelopes

EUROPE

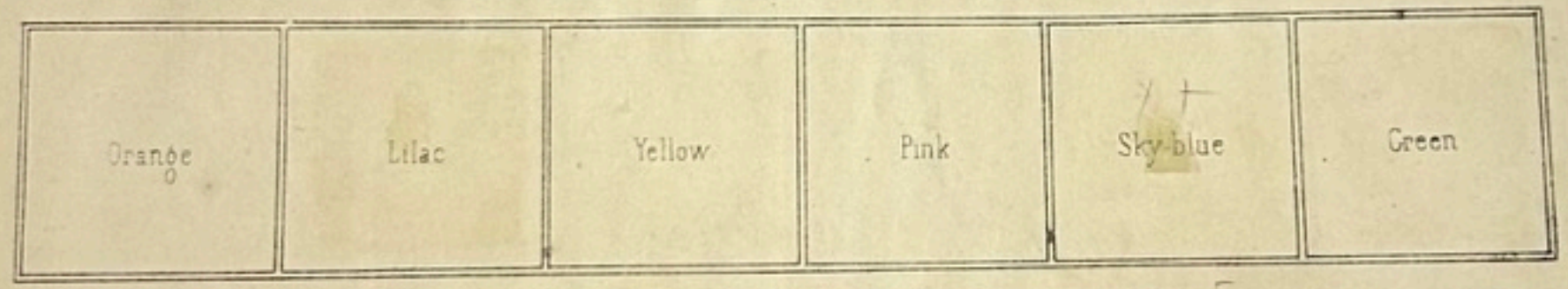
45

GERMANIC CONFEDERATION
Thurn and Taxis, Post Office (Southern States)

580

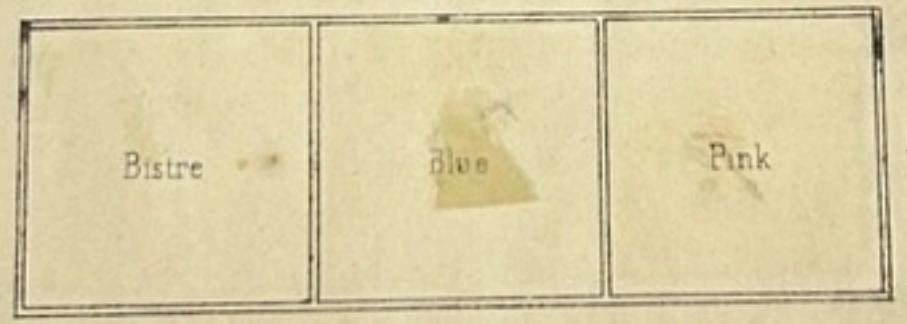


120



800

180



100



Envelopes



GERMANIC CONFEDERATION

2500

Wurtemberg

Return Stamp



3

Violet	Pink	Blue	Green	Gold Yellow	Buff
--------	------	------	-------	-------------	------

100

Blue	Pink	Green	Orange	Brown
------	------	-------	--------	-------

1500

Blue	Pink	Green	Orange
------	------	-------	--------



1862



1862

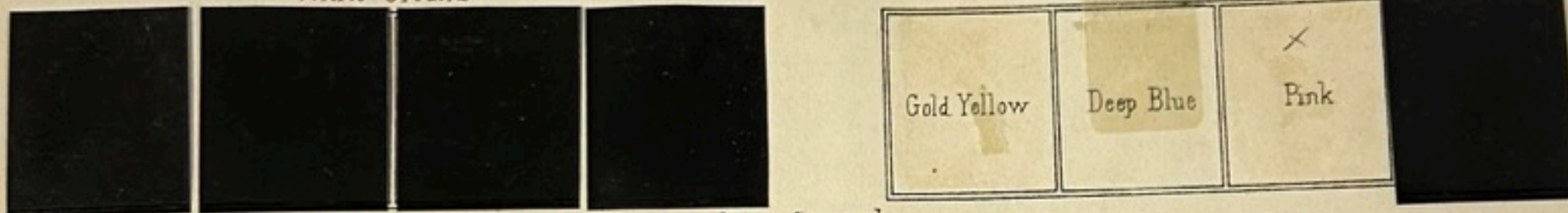
EUROPE

PRUSSIA 360

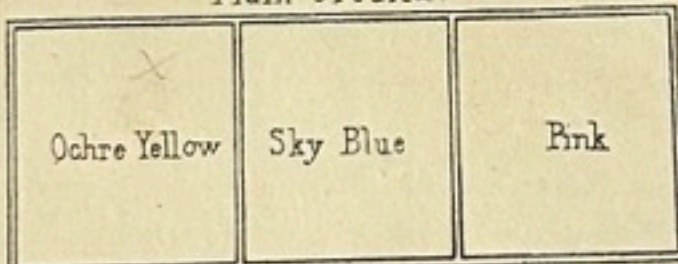
70

Frederick William IV. Coloured Ground.

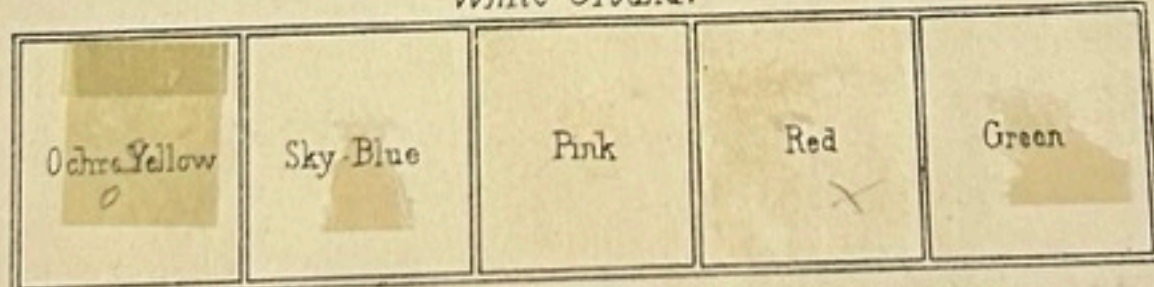
White Ground



Plain Ground.



White Ground.



Envelopes

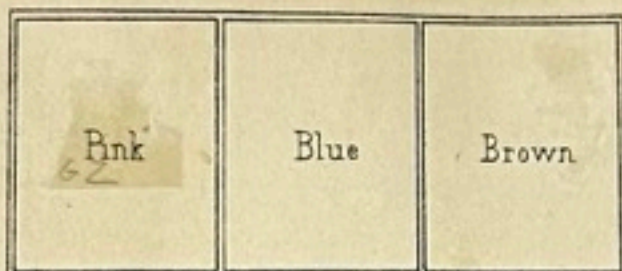


EUROPE

RUSSIA

3x11 = 24K

28.4K



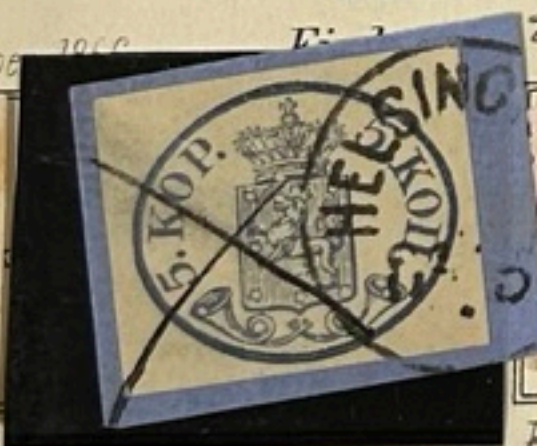
Local Stamp

Envelopes

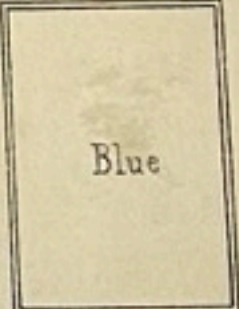


White Paper 1860

Coloured Paper 1860



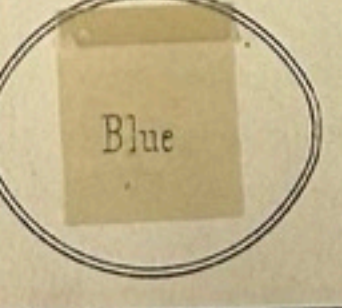
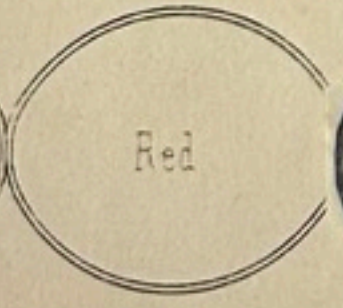
Poland



2-4K

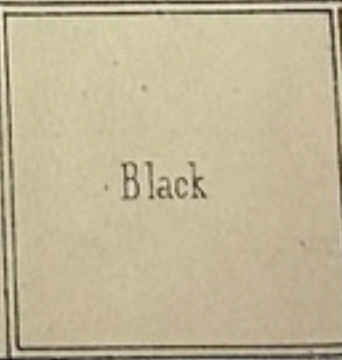
Envelopes

1862



Envelopes

Warsaw



Lith. Courty, r. Rousselot, 18 Paris

NORTH AMERICA

4-2K

5

UNITED STATES

Northern Federal States.

Blue	Black	Red
------	-------	-----

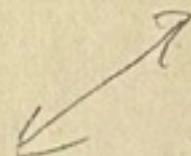


1-00



4-00

7-50



	Orange	Violet		Green	Blue	Maroon	Red	Blue
--	--------	--------	--	-------	------	--------	-----	------

1-9K

47-401 1-50 4-00 37 4-74 E 300 50 35 50 32 304 300 26A 10A 4-20-300

Blue	Orange	Lilac	Black	Green	Brownish Yellow	Dark Brown	Red	Blue
------	--------	-------	-------	-------	-----------------	------------	-----	------

H. 6-00 72 2-00 71 3-00 70 1-00 69 50 68 7-50 67 2-76A 6-00 65 L.H. Corley, & Rousselet, 15, Paris. 30-65



PREÇO 42\$50



#23



22



26



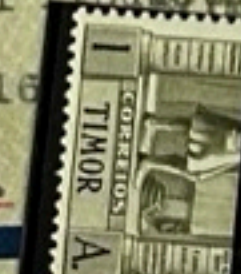
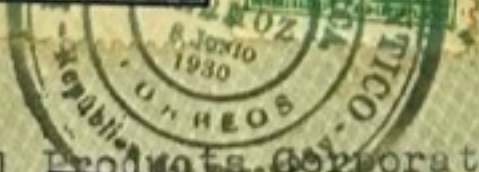
M. V. Jussila,
Lappajärvi,
451 =
1542
Wakuntuan Ink 1000



VIA AERE

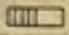


Señores
International Products Corporation,
Reconquista 16
BUENOS AIRES.



Compagnie Générale Aérienne de Postes



1882/83.  (Marken von Peru mit|Stamps of Peru with|Timbres de Perou avec \times Chilenisches Wappen|Chilian arms|Armes de Chili.)



gelb|orange


dunkelviolet|violet

karmin|carm.

dunkelblau|blue|bleu

grün|green|vert

karmin|carm.

1881/83. )



rosa|rose

grün|green|vert

dunkelblau|blue|bleu

hellblau|blue|bleu

¹⁾ Marken von Peru mit|Stamps of Peru with|Timbres de Perou avec \times UNION POSTAL UNIVERSAL PERU in Hufeisenform & Chilenisches Wappen a horseshoe and Chilian arms|formant fer à cheval et Armes de Chili.

Port. Congo

1893-5 King Carlos I
Porcelana, Perf 11.5



P12-10



15r
chestnut

20r
violet



50r
blue

75r
carminc

80r
green



Perf 12.5



Perf 13.5



5r
yellow orange

10r
violet green

100r
chestnut/yellow

ANGRA

DAISY SHEET
No. 710-10
Printed in U. S. A.

elbe



COLOMBIA

AIR POST STAMPS
1941



80 C
OLIVE BLACK



5 P
LIGHT GREEN
AND BLACK

1945



40 C
CLARET



60 C
LIGHT
VIOLET BROWN

80 C
DARK
SLATE GREEN

2 P
RED ORANGE

1946-48



COLOMBIA

POSTAL TAX STAMPS

1937



1935



1940



1939



1940





AN OFFICIAL SCOTT ALBUM PAGE




COLOMBIA

POSTAL TAX STAMPS
1943-45


Postal Tax Stamps of 1939 Surcharged like cut ¼ C On 1 C VIOLET	\$ 0,01½ MEDIO CENTAVO On 2 C PEACOCK GREEN	¼ C On 20 C LIGHT BROWN		
---	--	-------------------------------	---	---

1945-48

Stamp of 1939 Overprinted  5 C DULL BROWN	Stamp of 1941 Overprinted SOBRETASA 20 C GRAY BLACK	Same Overprint on Stamp of 1938 20 C DARK BLUE
---	---	--

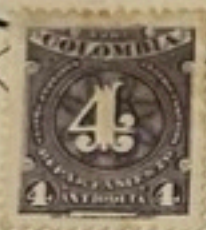
	5 C VERMILION
--	------------------

	1 C On 10 C LIGHT VIOLET	1 C On 25 C RED	1 C On 50 C ULTRAMARINE
---	-----------------------------------	-----------------------	-------------------------------

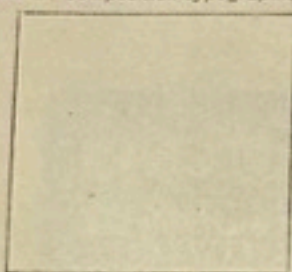
			10 C PURPLE
---	--	---	----------------

ANTIOQUIA

PROVINCE DE COLOMBIE

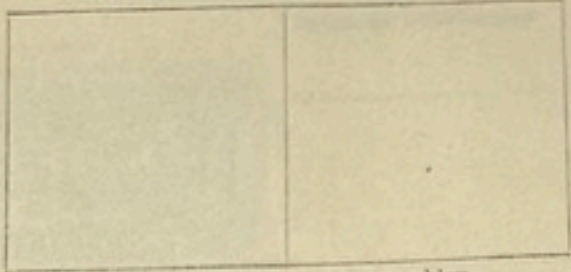


1901. Composition typographique.



1 c. rouge.

1901. Même genre. Millésime 1901 en haut.



1 c. brun jaune.

1901. Même genre. CENTAVO sous le chiffre.



1 c. brun rouge.

1 c. bleu.

1902. Types divers.



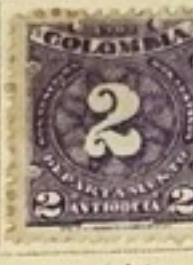
1 c. rose.



1 c. bleu.



2 c. bleu.



2 c. violet.



3 c. vert.



4 c. violet.



5 c. rouge.



10 c. lilas.

Erreur.



20 c. vert.



30 c. rose.



40 c. bleu.



50 c. brun sur jaune.

1 p. violet et noir.

2 p. rose et noir.

5 p. bleu et noir.

3 c. bleu.

1903. Types divers.



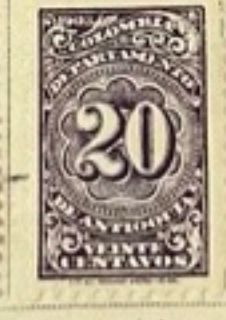
4 c. bistre brun.



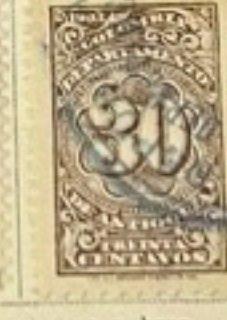
5 c. bleu.



10 c. jaune.



20 c. violet.



30 c. brun.



40 c. vert.



50 c. rose.

1 p. brun.

Timbre pour chargements.

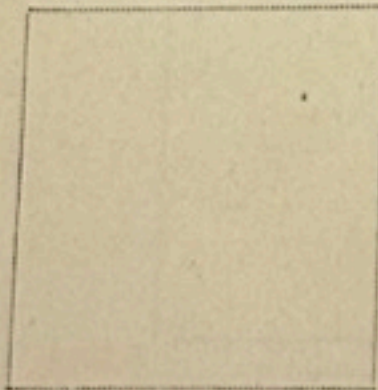
1902. Inscriptions.



10 c. violet sur bleu.

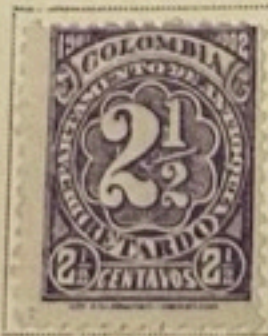
Timbres pour lettres en retard.

1901. Genre des Timbres de 1901.



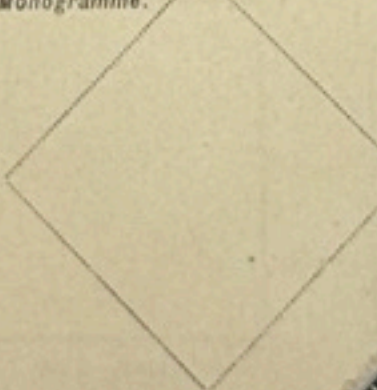
1 1/2 c. lilas.

1902. Chiffres.



2 1/2 c. violet.

1902. Monogramme.



5 c. noir sur ros.

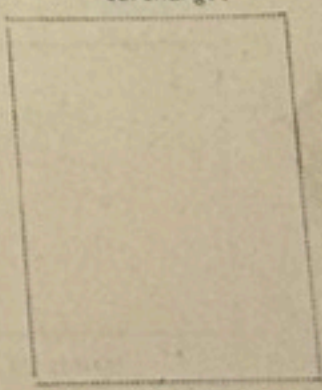
Timbres pour avis de réception.

1903. Monogramme.



5 c. gris vert.

1903. Timbre de Colombie de 1902. surchargé.



10 c. noir sur rose.

T. H. LEMAITRE, PHILATÉLISTE ET ÉDITEUR D'ALBUMS 16 AVENUE DE L'OPÉRA PARIS

COLOMBIA

1941-44

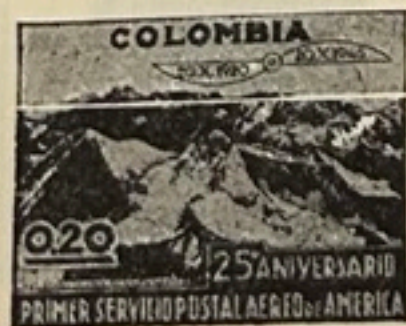
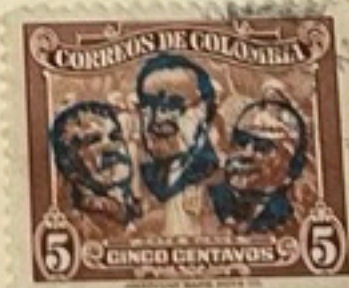
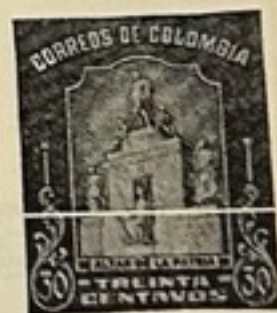
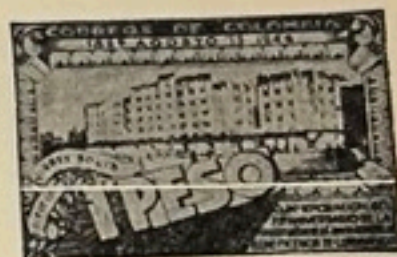
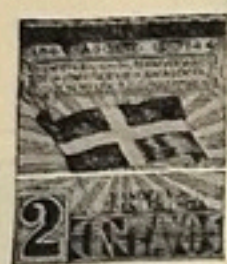


Stamps of 1939-44
Surcharged
with New Value
1 C
On 5 C
DULL BROWN

2 C
On 5 C
DULL BROWN

5 C
On 10 C
DEEP ORANGE

1944-45

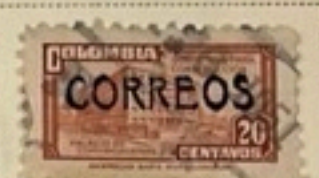
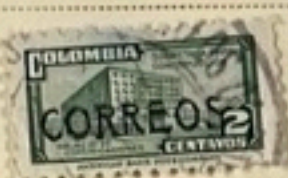
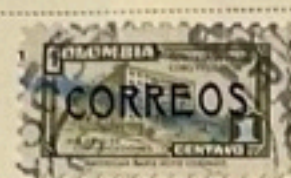


COLOMBIA

1947-49



Postal Tax of 1945
Overprinted
"C"
1 C
YELLOW
BROWN

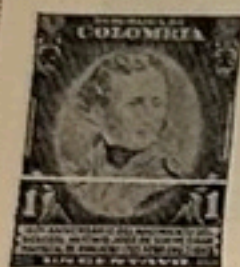


Type of 1937
10 C
RED



COLOMBIA

1946



2 C
VIOLET
AND ROSE
CARMINE



9 C
DARK GREEN
AND RED

10 C
ULTRAMARINE
AND ORANGE



30 C
BROWN RED
AND
GREEN



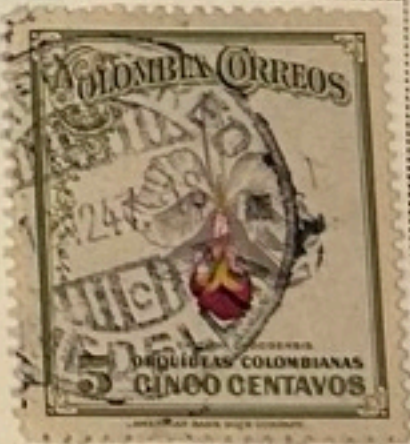
50 C
DEEP BROWN
AND
VIOLET



1946-47



15 C
SLATE BLACK



COLOMBIA

UNITED STATES OF COLOMBIA



REPUBLIC OF COLOMBIA



COLOMBIA



Air Post



Registration



COLOMBIA

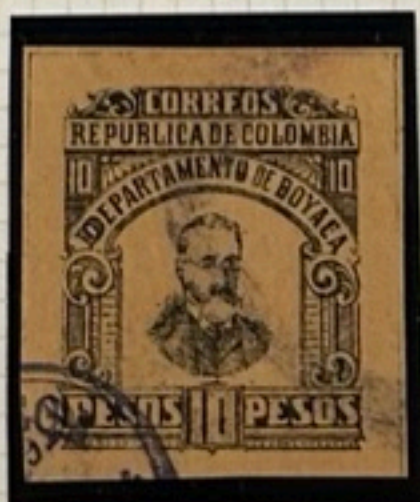
ANTIOQUIA



BOLIVAR



BOYACA



COLOMBIA

CAUCA



CUNDINAMARCA

SANTANDER



TOLIMA



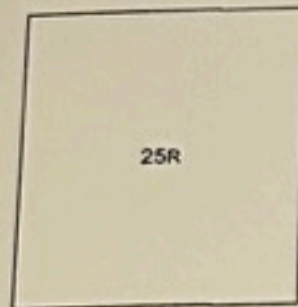
KIONGA

Lourenco Marques Issue Surcharged in red
1916



FUNCHAL

King Carlos
1892-93



25R



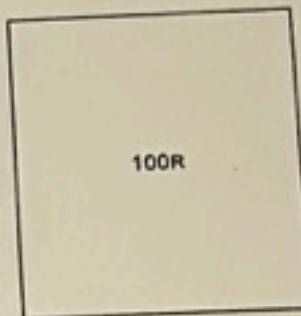
50R



75R



80R



100R



150R



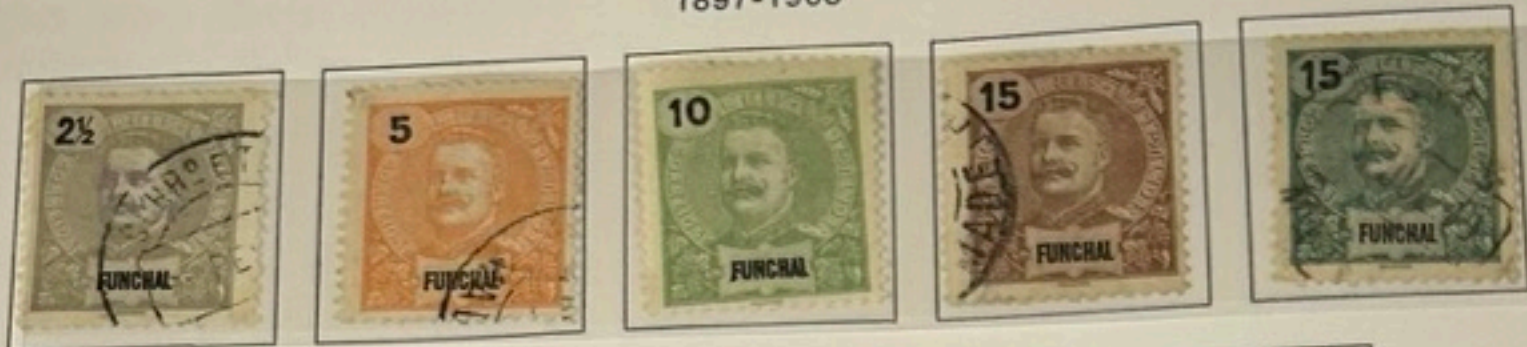
200R



300R

FUNCHAL

King Carlos
1897-1905



Port. Congo

1893-5 King Carlos I (cont'd)
Pontinhado perf 12.5

Perf 13.5

20r violet blue

25r
green

75r
carmine

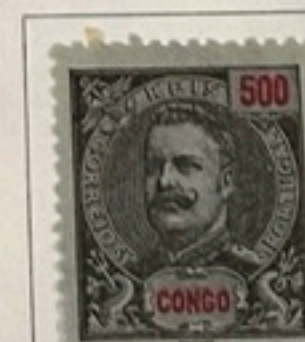
80r
yellow-green

50r
blue

1898-01 King Carlos I, black value
Smooth, light wire mark (pontinhado) P 11.5



200r
lilac



Yellowish
Paper



25r
green

Port. Congo

1902 OP on Carlos (4-number)
& newspaper stamp
Porcelana



Perf 11.5

65r on 15r
brown

65r on 25r
green



130r on 100r
brown/yellow



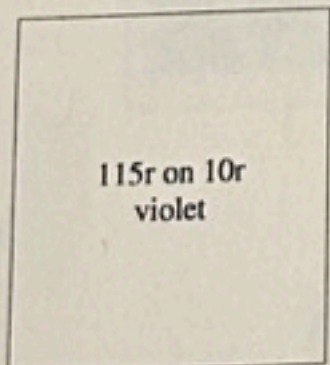
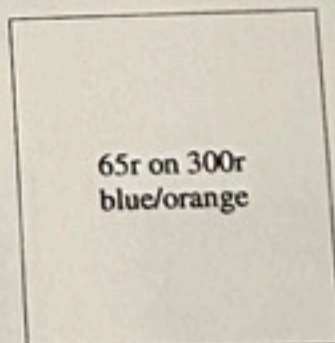
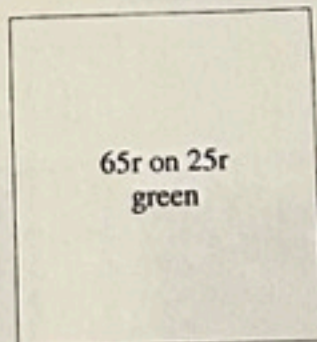
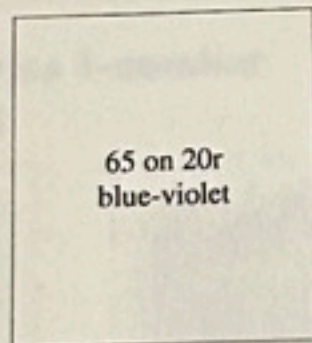
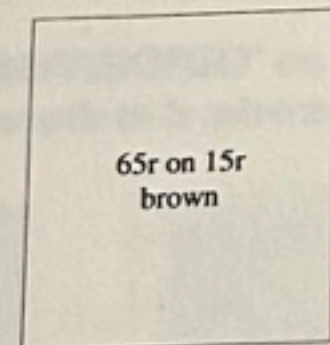
Perf 12.5

65r on 15r
brown

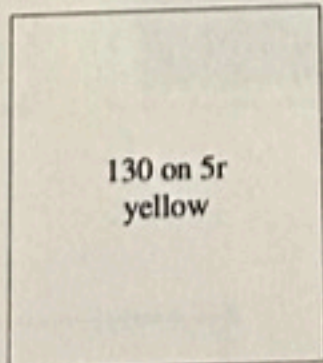
65 on 20r
blue-violet

65r on 25r
green

65r on 300r
blue/orange



115r on 10r
violet

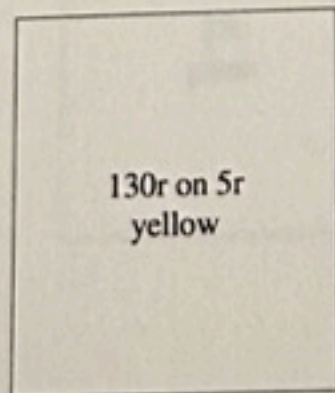


130 on 5r
yellow



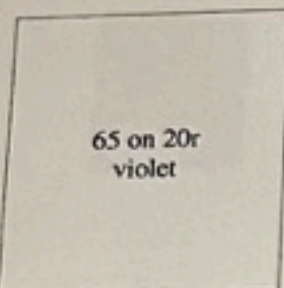
Perf 13.5

130r on 5r
yellow

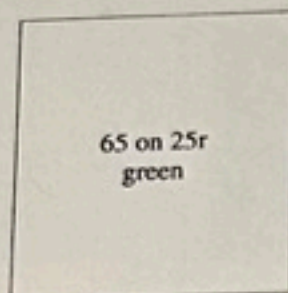


Port. Congo

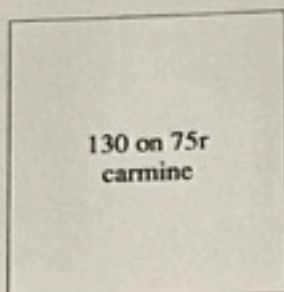
Pontinhado
Perf 12.5



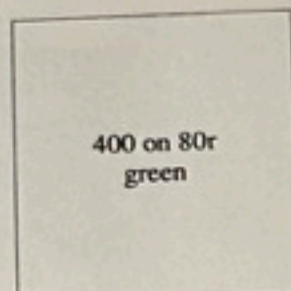
65 on 20r
violet



65 on 25r
green

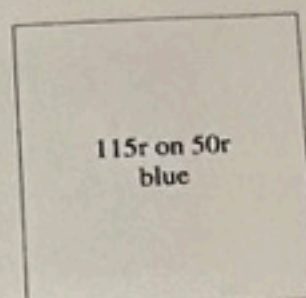


130 on 75r
carmine



400 on 80r
green

Perf 13.5



115r on 50r
blue

Smooth Paper
Perf 12.5



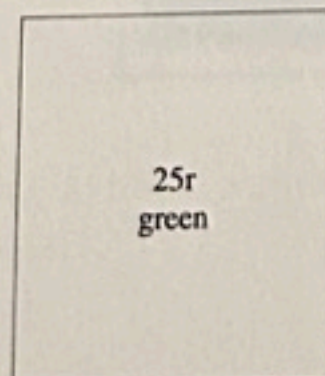
Perf 13.5



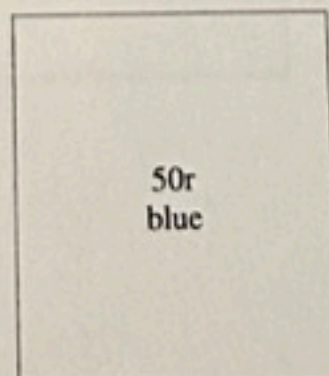
1903 'PROVISORIO' on Carlos 1-number
Paper smooth to lt wire mark



Yellowish
Paper



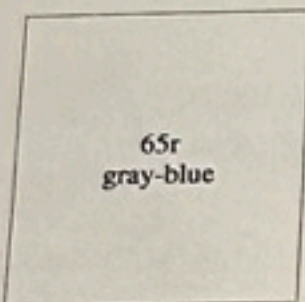
25r
green



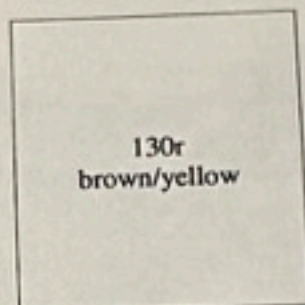
50r
blue

Port. Congo

1903 Carlos, new values and colors, P 11.5
Paper smooth, light wire mark



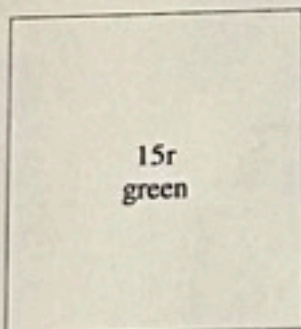
65r
gray-blue



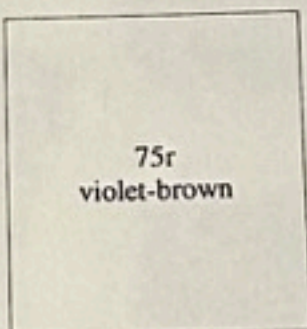
130r
brown/yellow



Paper Yellowish

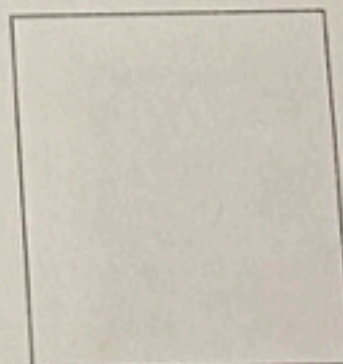
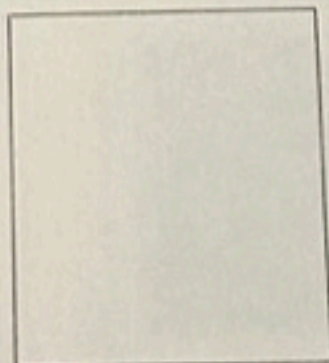


15r
green



75r
violet-brown

1905 50r Surcharge on Carlos



Port. Congo

1911 Angola stamps
OP Congo+ Republica



'REPUBLICA' OP on Carlos (25r)
smooth, light wire mark



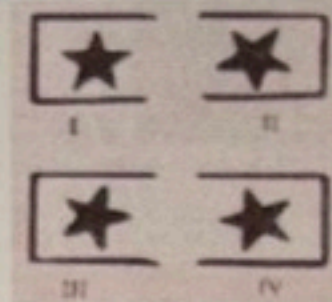
Port. Congo

1913. Vasco da Gama- Macau, Port Africa, Timor

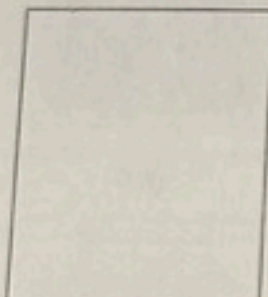


Port. Congo

1914 Ceres
P 15x14
Porcelana



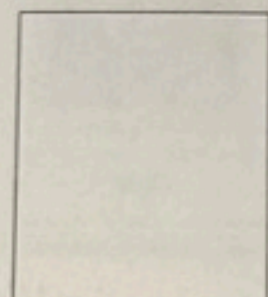
II-II



III-II



I-I



III-I



I-I



I-I



I-I



II-II



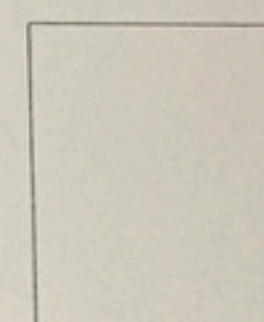
I-I



II-I



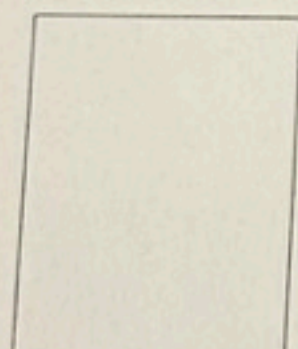
II-II



I-I



II-II



I-I



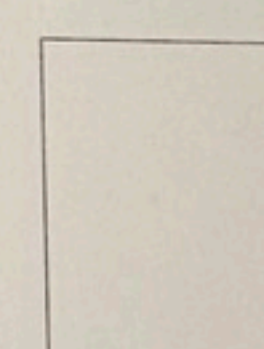
II-II



I-II



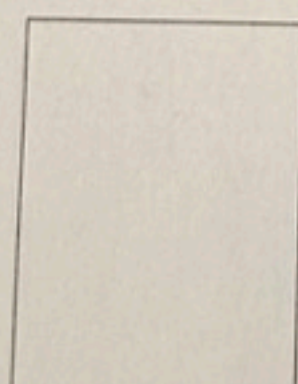
II-II



I-I



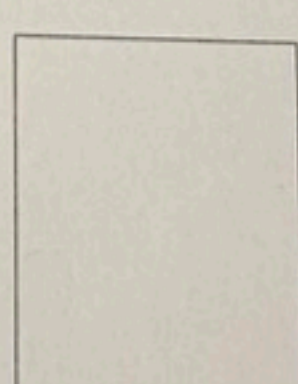
II-II



I-I



II-II



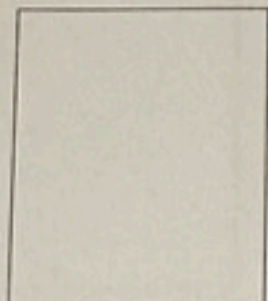
I-I

Port. Congo

1914 Ceres
P 15x14
Porcelana Colored



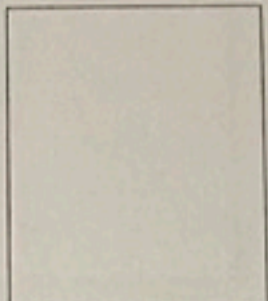
II-II



I-I



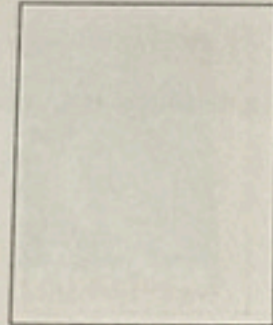
II-II



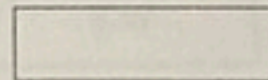
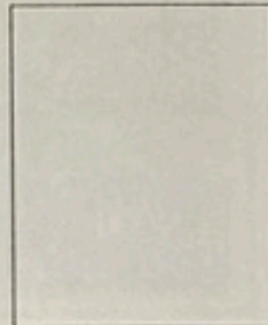
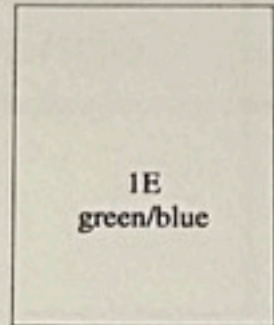
I-I



II-II



I-I





SG8 2 Pairs

SG7 PAIR



"WINDHOEK" S.W.A. 12th OCT. 1916



"MARIENTAL" S.W.A.



"WINDHUK" S.W.A.P.
30th SEPT. 1920

NOTE
SPELLING



"SWAK-PALM" (DATE BOTTOM) DATE DIST. 1919
KARIBIB



"KALKFELD" S.W.AFRICA
1/2" STATIONERY STAMP
OPT. SOUTHWEST AFRICA
ONE PENNY



"SWAK"

SACC
RAND 2,440

T060

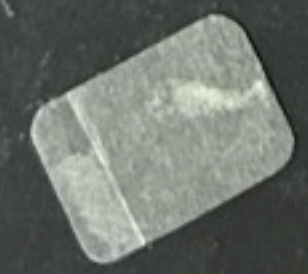
1897



1900
vww



1909
vww



CAMERUN

PREWEX
1881
1897

LOT GERMAN COLONIES
STAMPS & COVERS

UNW



UNW



SAND A

1901
UNW

1915
am

SOUTH
WEST
AFRICA

PREWAL



1897

1898



1901 UNW



1906
am





