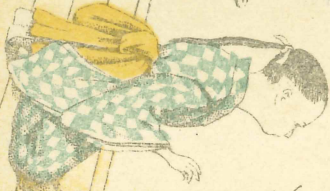
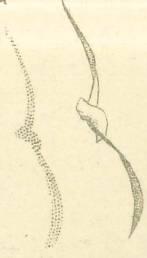


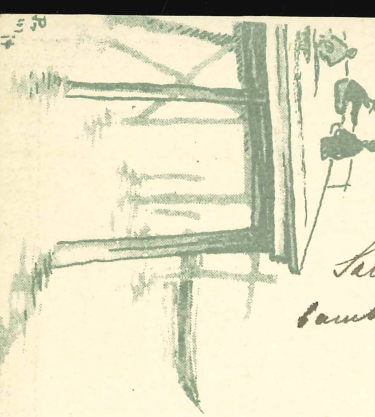
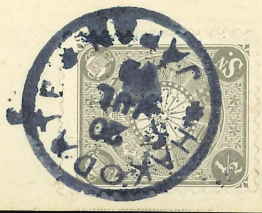


Egrigia Sig.^a Contessa,
Le invio da carissima il suo trale
che si trovano qui le potrei
'mini' e 'palloni' saluti.

Suo Dn.
G. Botte



Egrigia Sig.^a Contessa,
mille saluti affettuosi dal suo
Dn.
G. Botte.



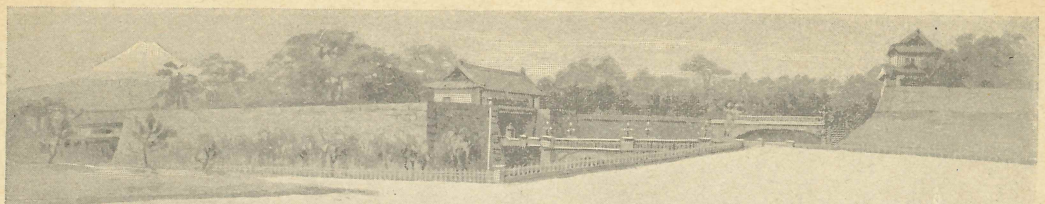
Egrigia Sig.^a Contessa,
Saluti affettuosi a lei, ed al ed ai
bambini
Dn.^o suo
G. Botte.



Vertical text on the right side of the envelope, possibly a recipient address or postal notes.



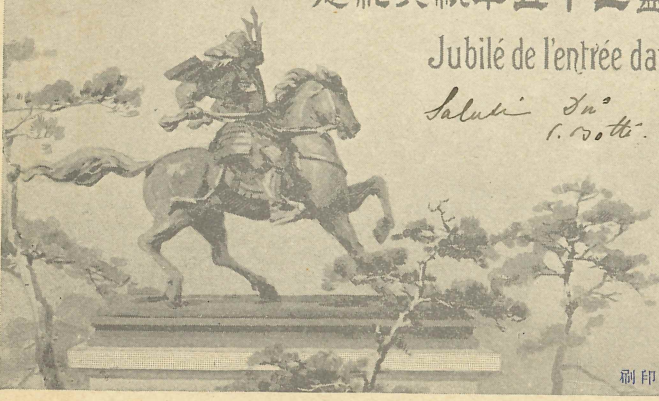
*Saluti Ino
I. Roth.*



紀念典祝年五十二盟加合聯便郵國萬

Jubilé de l'entrée dans l'Union Postale Universelle.

*Saluti Ino
I. Roth.*



像銅成

Le portais de Tsiyoda.
Statue de Kousouhoki Masashighé.

刷印局刷印 行發省信遞 濟錄登權作著