

10 C.  
gelbbraun  
yellow-brown  
brun-jaune  
□



1 Fr.  
orangerot  
red-orange  
rouge-orange  
□

1 Fr.  
braunkarmin  
brown-carmin  
carmin-brun  
□



1 C.  
olivgrün  
olive-green  
vert-olive  
a. blau  
□



25 C.  
blau  
blue  
bleu  
□



80 C.  
karminrosa  
carmin-rose  
rose-carmin  
□

1 Fr.  
dunkelkarmin  
dark carmin  
carmin foncé  
□



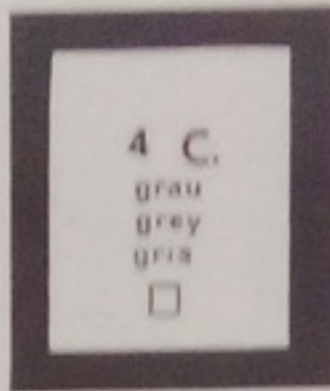
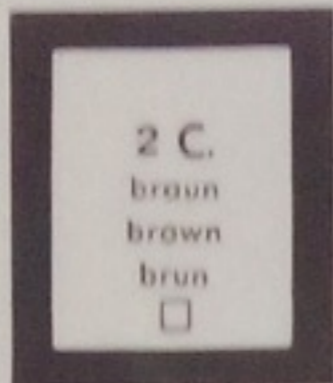


36

37

38

39



39

40

41

42

43



44

45

47

48

49



50

51

52

53



50a

53a

55

60

53a



54

55

56

57



19



20



21



22



23



24



25



26 a



27



28A



29A



30



31



32



33

5 (C.)  
gelbgrün  
yellow-green  
vert-jaune  
Type I



65



103 Type I



66

20 (C.)  
rotbraun  
red brown  
brun-rouge  
gelbes Papier  
Type I

25 (C.)  
ultramarin  
ultramarine  
outremer  
Type I



69

40 (C.)  
ziegelrot  
brick red  
rouge de brique  
a. sāmisch  
Type I

50 (C.)  
karmin  
carmine  
carmin  
u. rose  
Type I





2 (C.)  
grün  
green  
vert  
Type II



3 (C.)  
gelbbraun  
yellow-brown  
brun-jaune  
a. gelb  
Type II



5 (C.)  
gelbgrün  
yellow-green  
vert-jaune  
Type II

10 (C.)  
grün  
green  
vert  
Type II



10 (C.)  
schwarz  
black  
noir  
a. lila  
Type II



20 (C.)  
rot  
red  
rouge  
grünes Papier  
Type II



35 (C.)  
schwarzviolett  
black-violet  
violet-noir  
a. gelb  
Type II

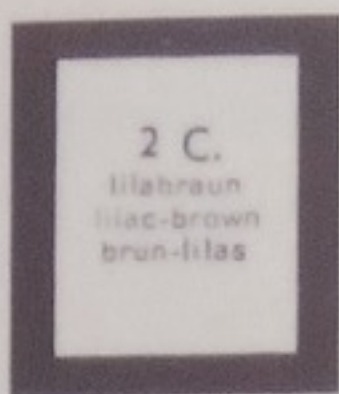




157



107



103



111



42



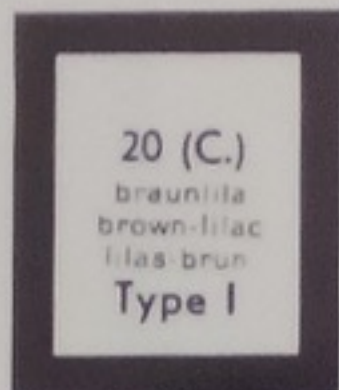
233



43



106



M2 Type I  
N



114 Type I



115



117



114 Type II  
N



124



157



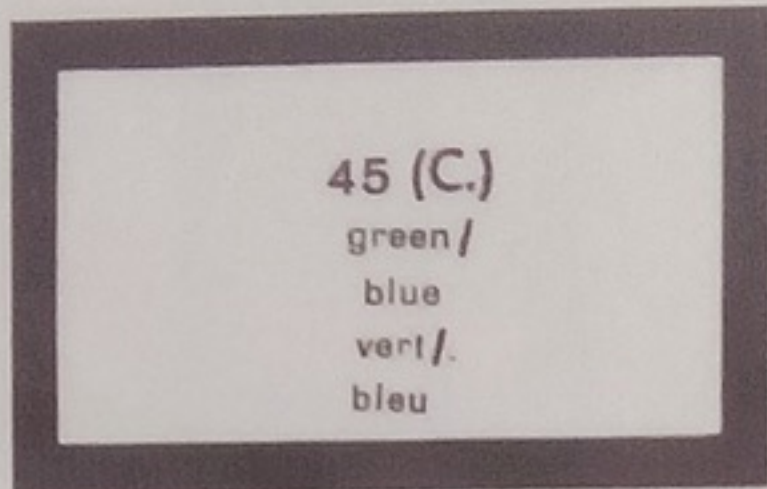
102



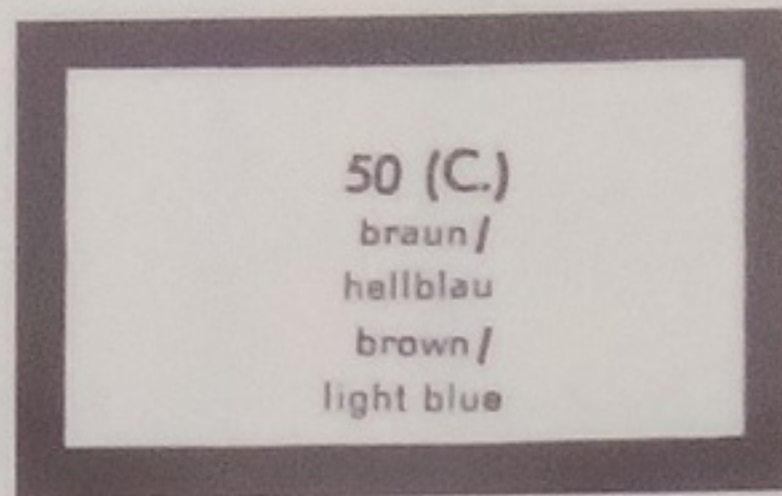
111



119



143



120



144



121

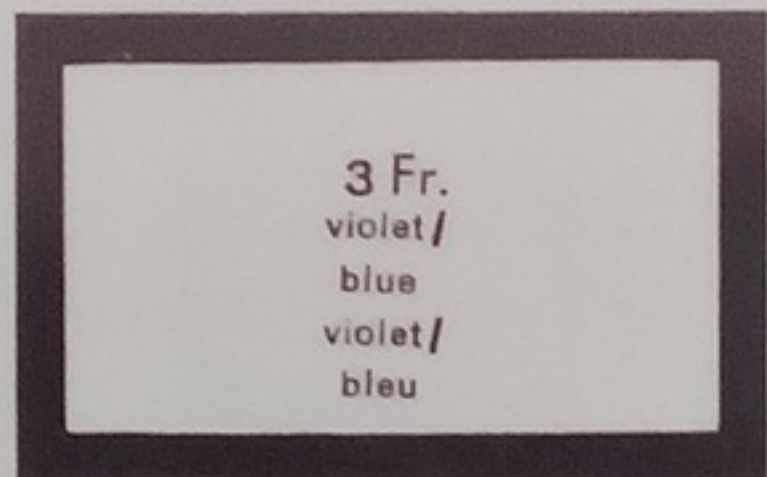


122

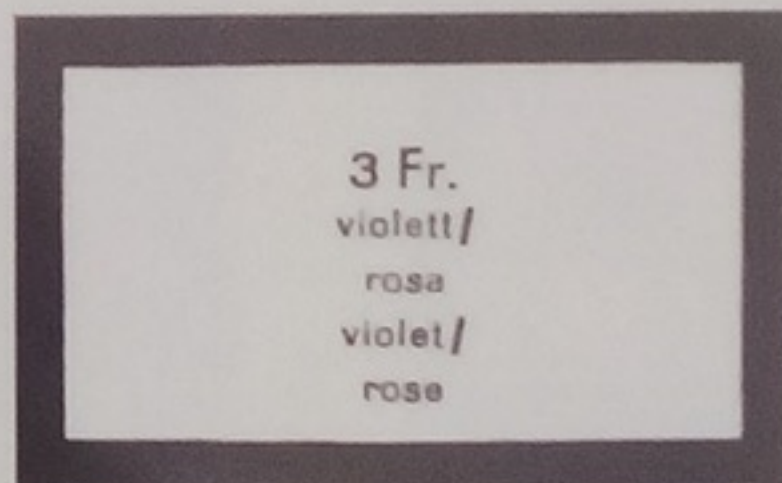


light blue

125



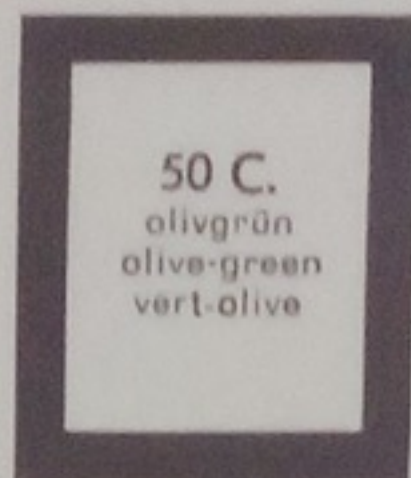
206



126



197



199



200





124



137



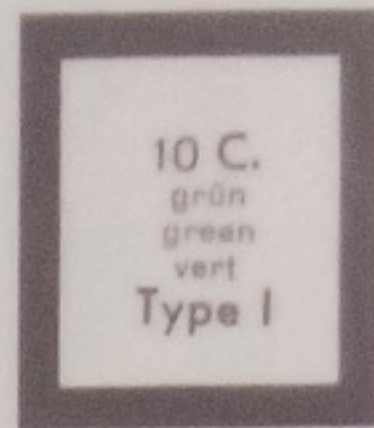
138



135



138



158a



189



139a



130



140



235



241



360



191



192



162



133



134



236



237



195



232



196



146



156



147



182





162



166



163



164



165



183



184



185



186





170



171



172



173



174



175



176



177



178



179



180



181



217



218



223



224



219



220



221



225



222



47



227



228



210



213



215



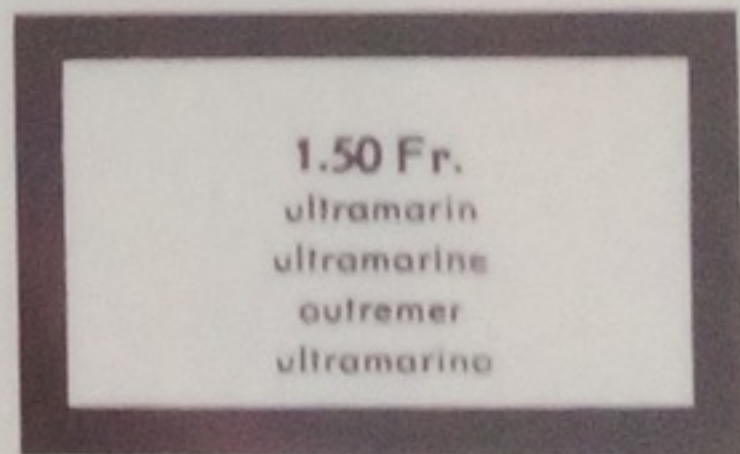
211



229



244



243



248



257



277A



278



278A 278B

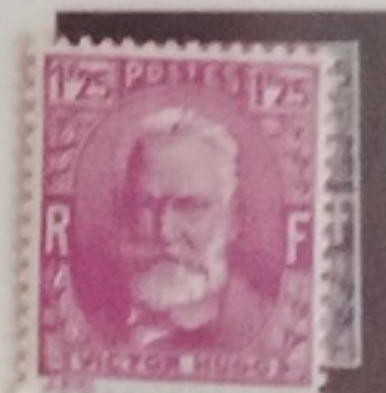








290

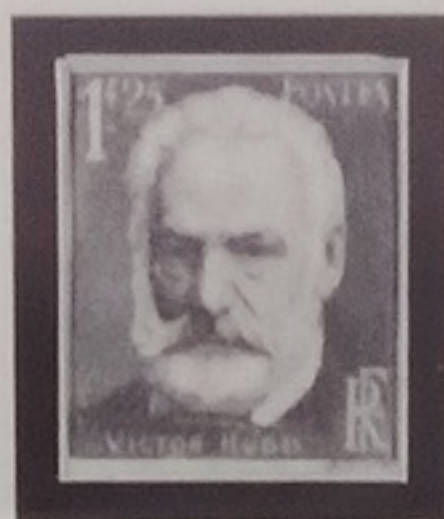




270-273



272b



295



277A



277B



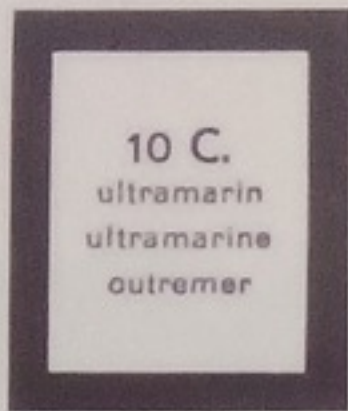
278



278A



278B



10 C.  
ultramarin  
ultramarine  
outremer

279



30 C.  
braunrot  
brown-red  
rouge-brun

360



35 C.  
grün  
green  
vert

361



239



280



281



282



283



363



364



284



365



284A



285



286



366



287



288



289



279A



279B



280



259



305



309



310



312



307



311



308



316



313



317



314



318



315



319



11. 8. 36

326



320



17. 8. 36

327



328



321



308



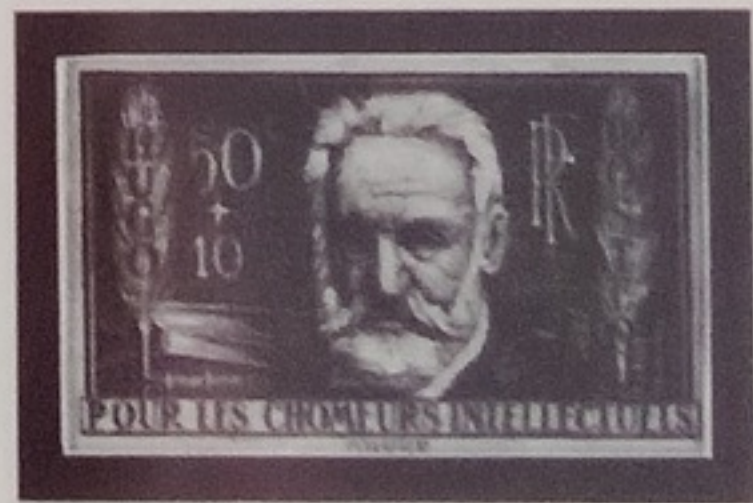
9. 8. 36

322



27. 8. 36

325



331

332

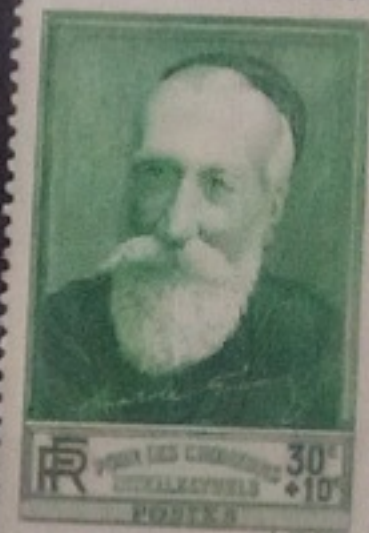
28.8.38

-4.9.36

325

324

333



-8.6.37

349

335

24.5.37



338

303



337

344



342

336

342





353



356



357



358







20 C.  
schwarz  
black  
noir

30 C.  
schwarz  
black  
noir



28



29

15 C.  
hellgrön  
light green  
vert clair

20 C.  
olivgrön  
olive-green  
vert-olive









GIBBS



BYRRH

*reclame*



POSTAL



1420

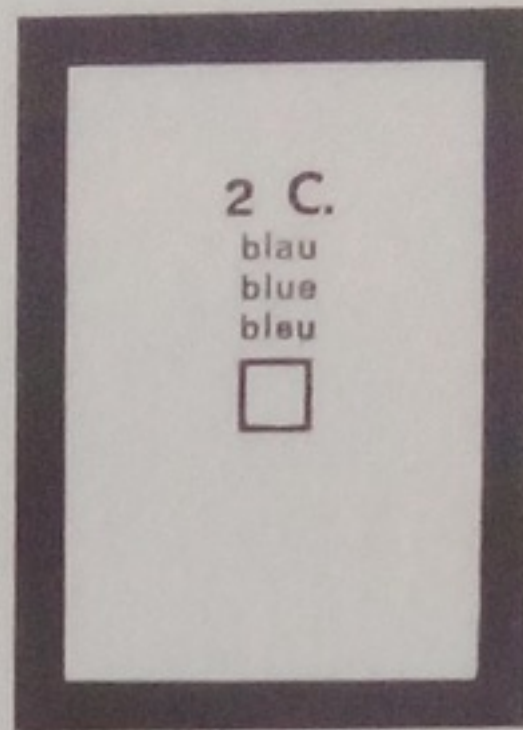
1420



18.5.36

33

10





48

74

78

84

87

88

89



90

91

94A

98

99

97

95



530 206-2164



243-2432



372-316



377



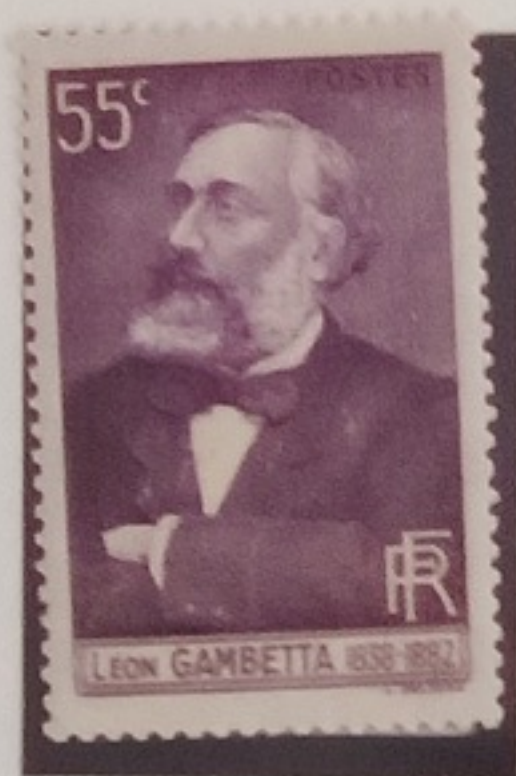
378



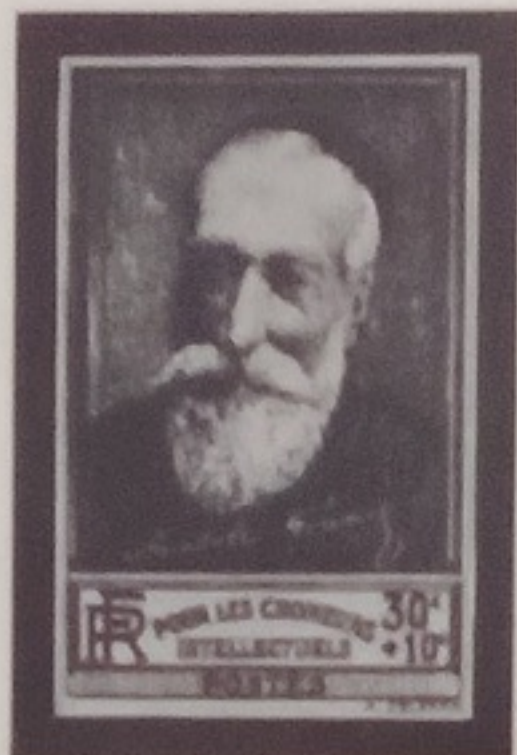
386



387



372A



380



385



384



373



383



393 a



396



400



449



443



450



388



390



393



389



391



392



499



500



539



394



501



397



399



401



417



402



403



418



419



423



424



420



421



422



428



426



425



428



427



430



444



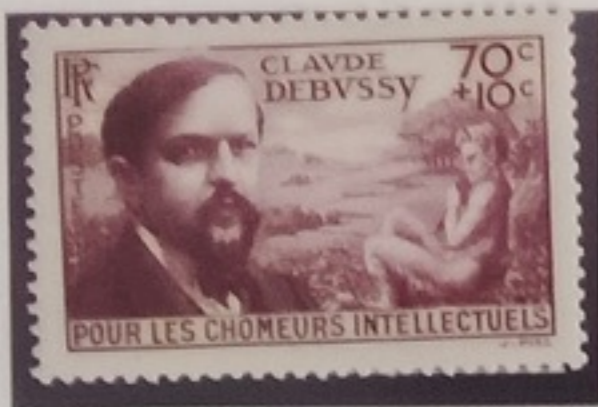
423



436



442



437



438



433



443



440



441



446



451



445



452



449



465



461



434



455



503



741



434



456



497



474



457



475



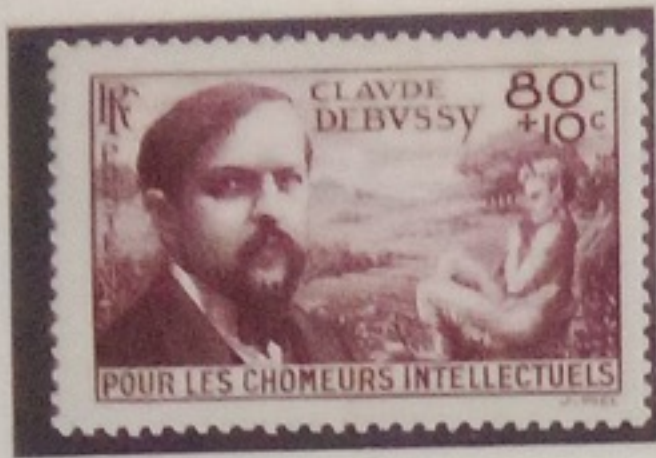
453



456



465



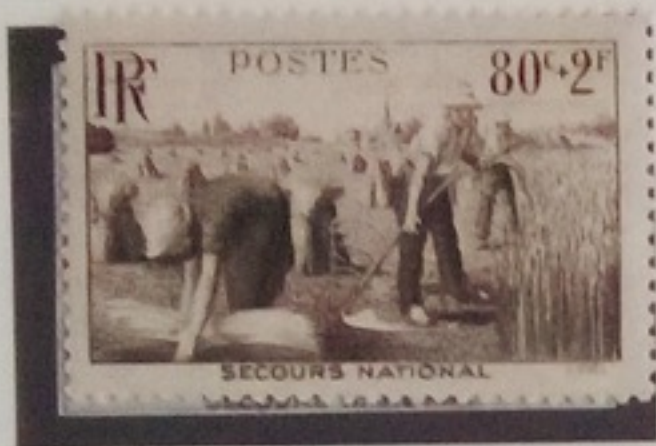
462



463



464



466



467



468



4987



463



492



495



545



584



550



551



584



470-493



489

491



490

492

493



470  
473

502

541

540



540



526 & 537







567



572-575



582



610



611



602-605





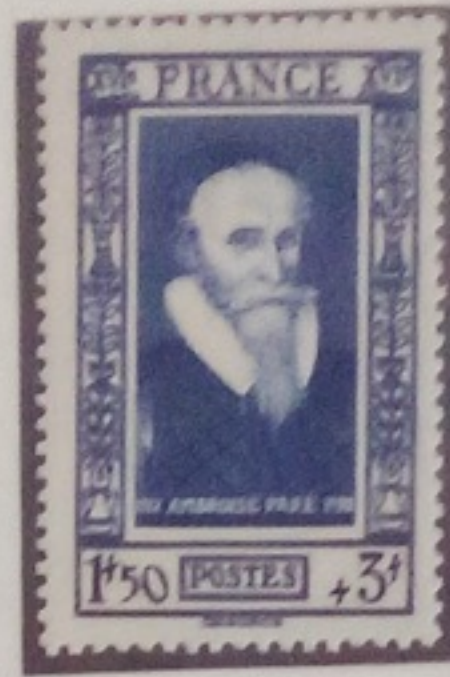
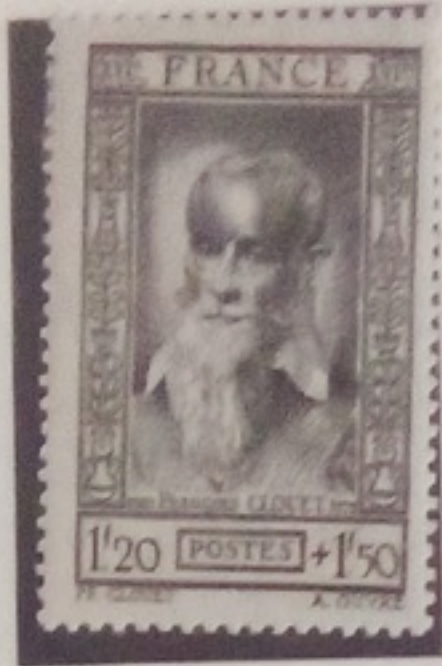
565.666 a



568-571



576-580



587-532



573 - 538



607



606



608



741



612-617



665-667



60



61



62



63



66



65a



630-648



98

99

100

101



620-629



702-711



649-656



649-656



657-660



83



670-681



750

754

755

751



752-750



425-29



430-753



682-701



712



715



714



735



715



716



716A



806



716B



717



716



807



808



718A



713



719A



713B



809



815



720



721



884



810



722



725



811



812



885



814



813



827



886



887



740



742



743



744

720a  
mèches  
Reliées



721AB  
mèches  
Retouché  
TC



750

No 722h  
Prix 250  
Cote 5000 (A.V.S.)  
Cat. 1000  
Brosses  
d'oreilles  
Touche  
normal

722h



100



99



737



739



743



744



745



746



752



747



748



748



765-770



789



753



761



762



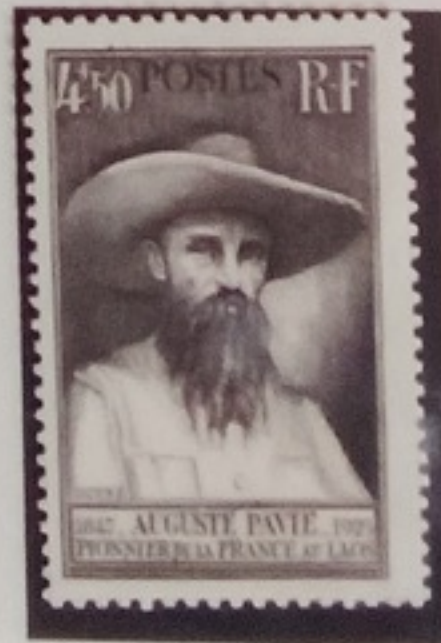
777



754



773



784



785