

# SAN MARINO

The world's smallest republic. Area: 38 square miles; Population: 14,000; Language: Italian;  
Capital: San Marino. 100 Centesimi = 1 Lira.

## ISSUES OF 1877-99



1

4

7

11

25c Claret 5	30c Ochre Brown 6	40c Mauve 7
--------------------	-------------------------	-------------------



2

3

5

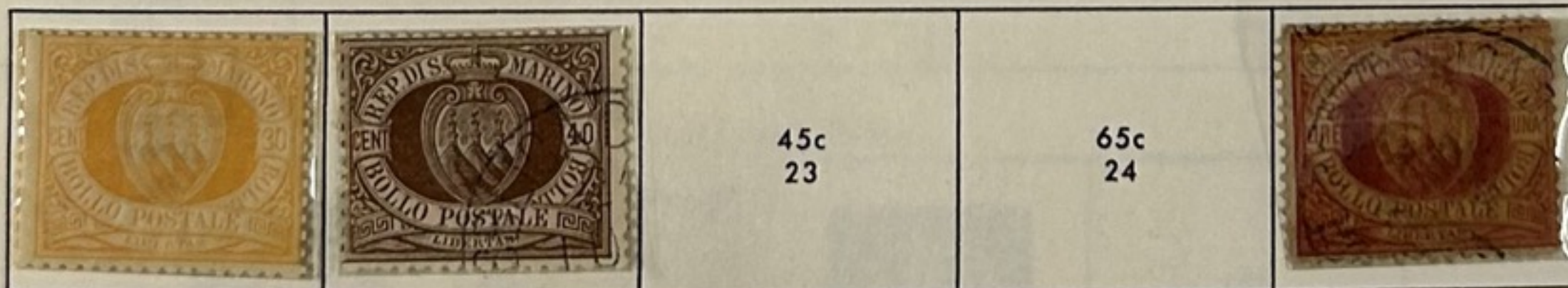
6



9

10

14



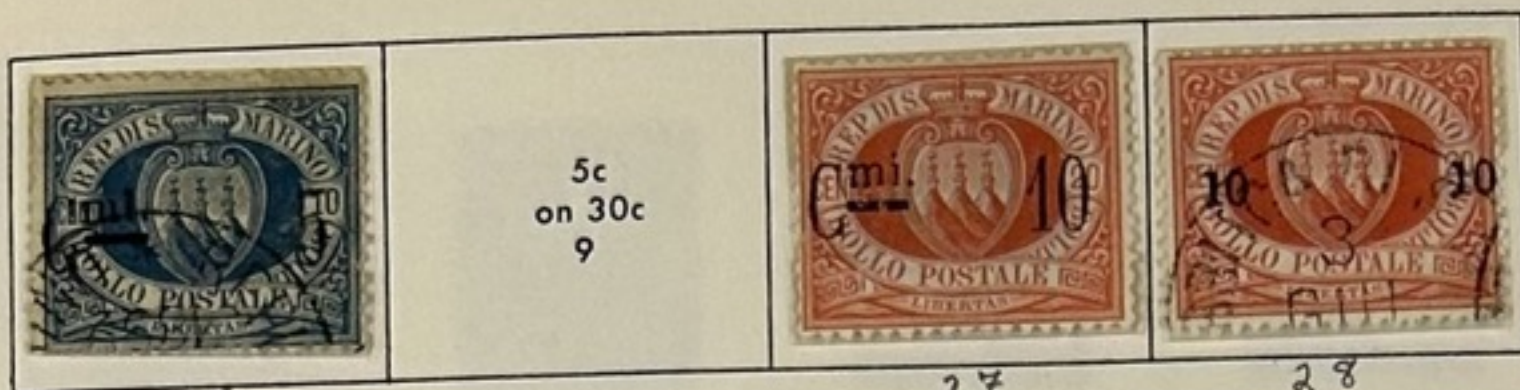
16

18

21

# SAN MARINO

ISSUES OF 1892-1919



25

5c  
on 30c  
9

27

28



29



31



30



19 mm  
78



32



18 1/2 mm  
78a




79



34



### Blue Green & Deep Brown

				
32	10c 33	30c 34	50c 35	60c 36

### Rose & Deep Brown

			
37		39	10L 40

J7

# SAN MARINO

ISSUES OF 1903-18



40

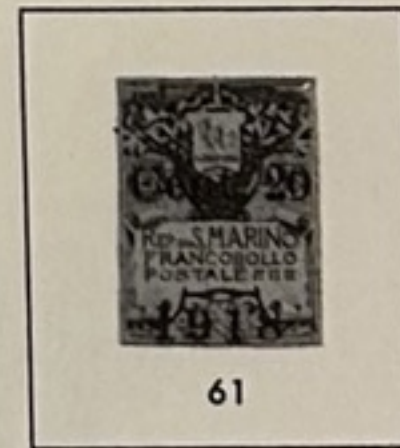
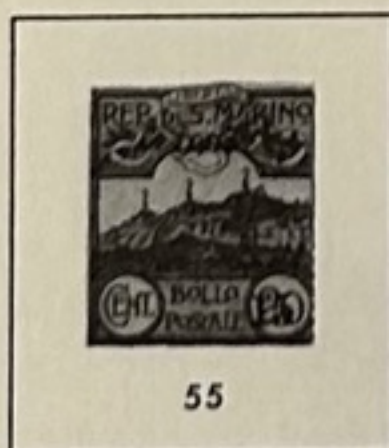
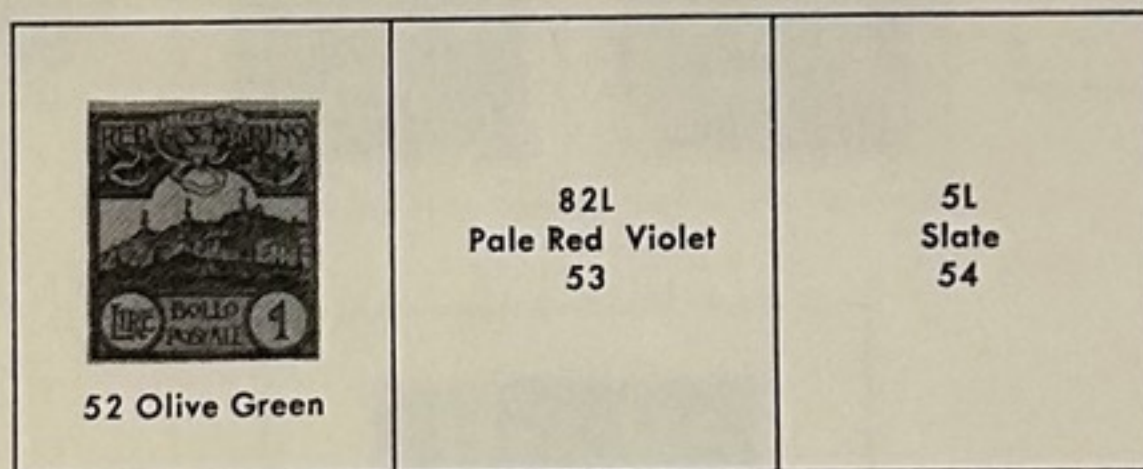


53

56

59

66



# SAN MARINO

ISSUES OF 1918



63

64



69



70

B3-B11



B12-B14



B15-B17

# SAN MARINO

ISSUES OF 1921-25



			<p>15c Emerald Green 80</p>	
--	--	--	-------------------------------------	--

41                      43                      46                      51

<p>82 Greenish Gray</p>	<p>30c Light Rose Lake 83</p>	<p>40c Light Carmine Red 84</p>	<p>50c Light Brown Purple 85</p>	<p>80c 86</p>
-------------------------	---	---	--	-------------------

<p>90c 87</p>	<p>88 Pale Gray Blue</p>	<p>2L Dull Orange Salmon 89</p>
-------------------	--------------------------	---



					<p>30c Light Brown Orange 95</p>
--	--	--	--	--	--

44                      44                      52                      55

<p>96 Light Brown</p>	<p>50c Deep Slate 97</p>		<p>99 Light Blue</p>		
-----------------------	----------------------------------	--	----------------------	--	--

65                      74                      76

# SAN MARINO

ISSUES OF 1922-23



33

35

36

37

38

39



82



81



83



B18-B24



E3



E2



EB1

# SAN MARINO

ISSUES OF 1924



84-86, 87, 88



87

88

135



136

137

138

Red Rose & Deep Brown



121

50c  
124

511

512

514

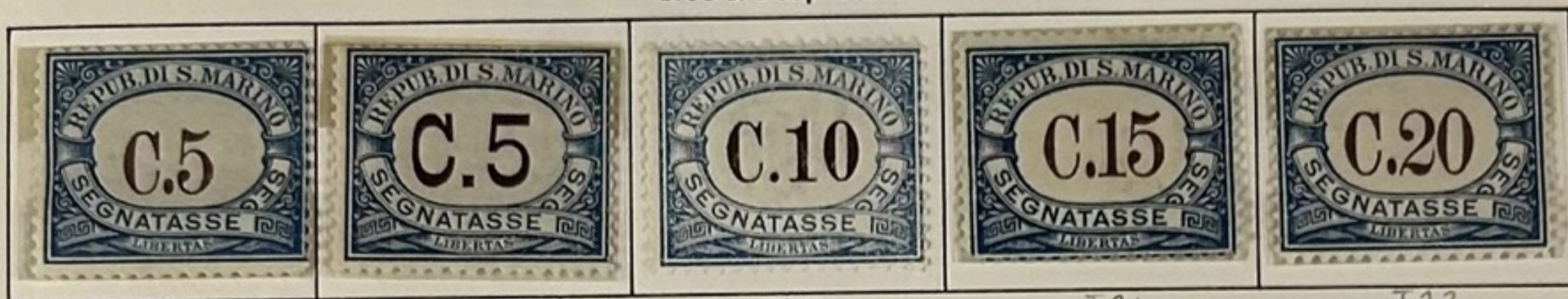
# SAN MARINO

ISSUES OF 1925-39



93-96

## Blue & Deep Brown



319

320 (39)

320

321

322



323

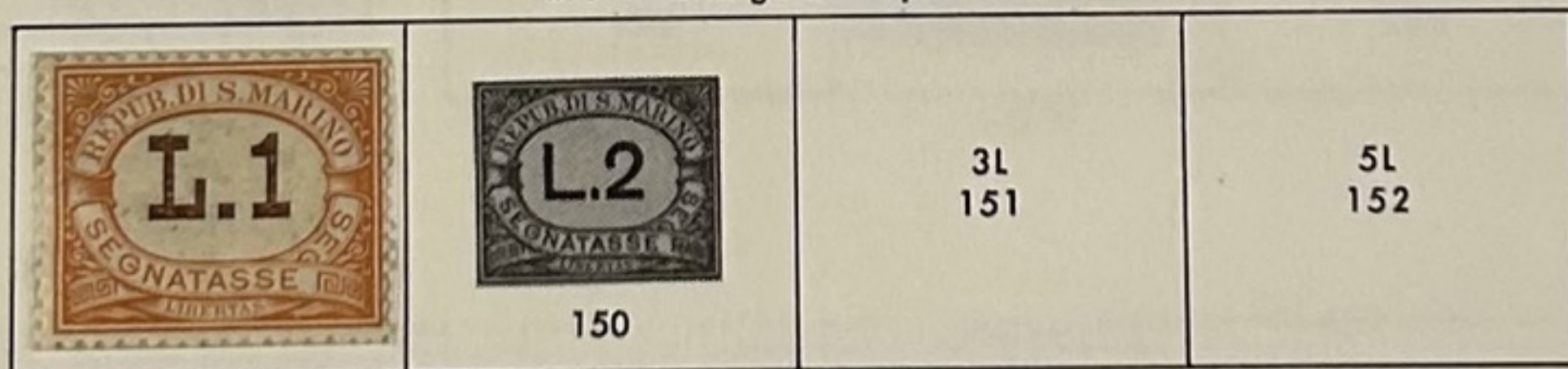
324

325

326

327

## Brown Orange & Deep Brown



328

150

3L  
151

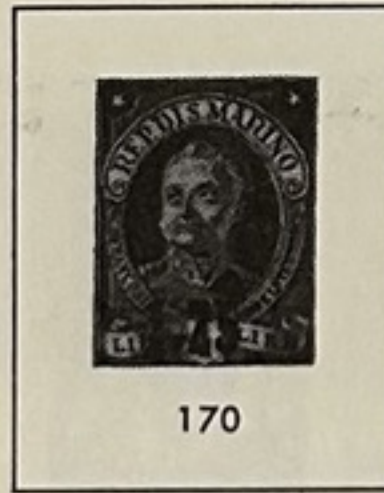
5L  
152



97-102



103



170



1105



172



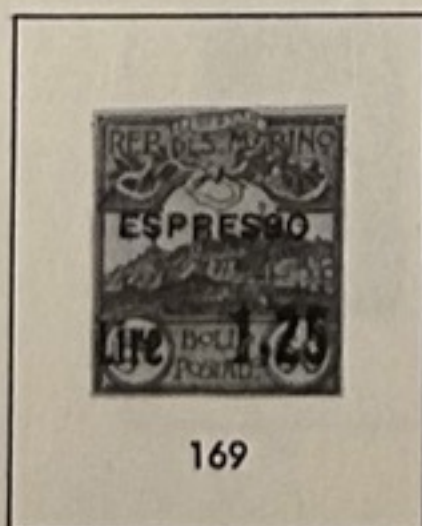
108



1109



175



169



185



187

# SAN MARINO

ISSUES OF 1928-35



111



112

111-114



180



181



115



116



117



118



119



202

120



121



122



123



124



207



208



209



128



211

# SAN MARINO

ISSUES OF 1928-29



E6



E7

Imperforate between



91-915



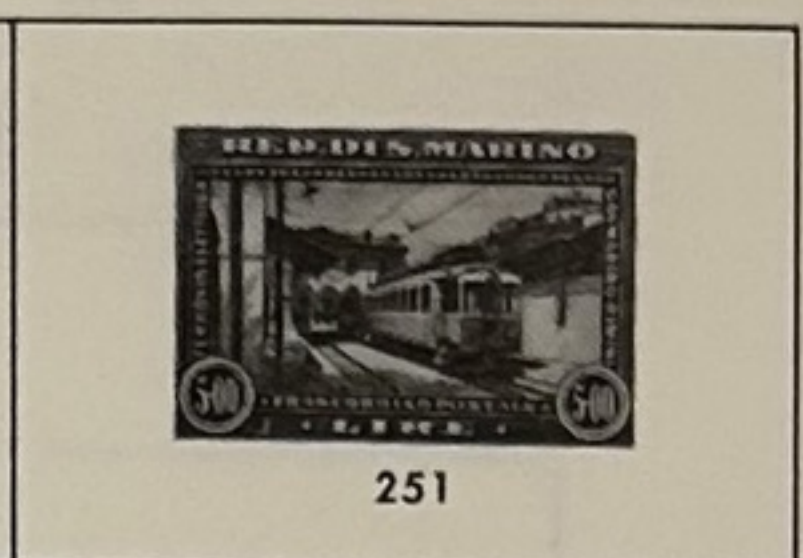
139



140



141



251

# SAN MARINO

ISSUES OF 1931-33



233

80c  
234



C3



266



152



153



269

# SAN MARINO

ISSUES OF 1932-33



143-150



161-167

# SAN MARINO

ISSUES OF 1935-36



169

170

171

172



173



289

176



288



291

293

294

178

180

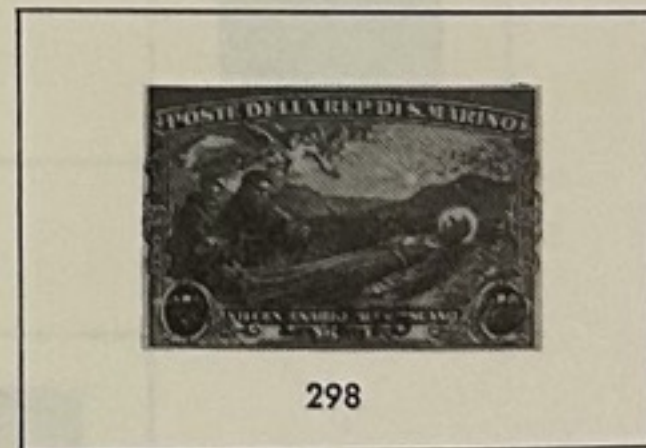
PEARL 2



297\*



181-182



298



299, on 50c

300, on 80c

# SAN MARINO

ISSUES OF 1936-43

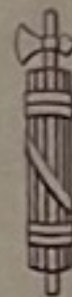


188-189

1937. 1636TH YEAR OF THE REPUBLIC  
Souvenir Sheet



REPUBBLICA DI SAN MARINO



ANNO 1937 - 1636 d. F.R.

1938. DEDICATION OF BUST OF ABRAHAM LINCOLN  
Souvenir Sheet



REPUBBLICA DI SAN MARINO



3 SETTEMBRE 1937-1637 d.F.R.

1938. DEDICATION OF BUST OF ABRAHAM LINCOLN  
Souvenir Sheet



REPUBBLICA DI SAN MARINO



3 SETTEMBRE 1937-1637 d.F.R.

# SAN MARINO

ISSUES OF 1942



190

191

192



326



193

194



327



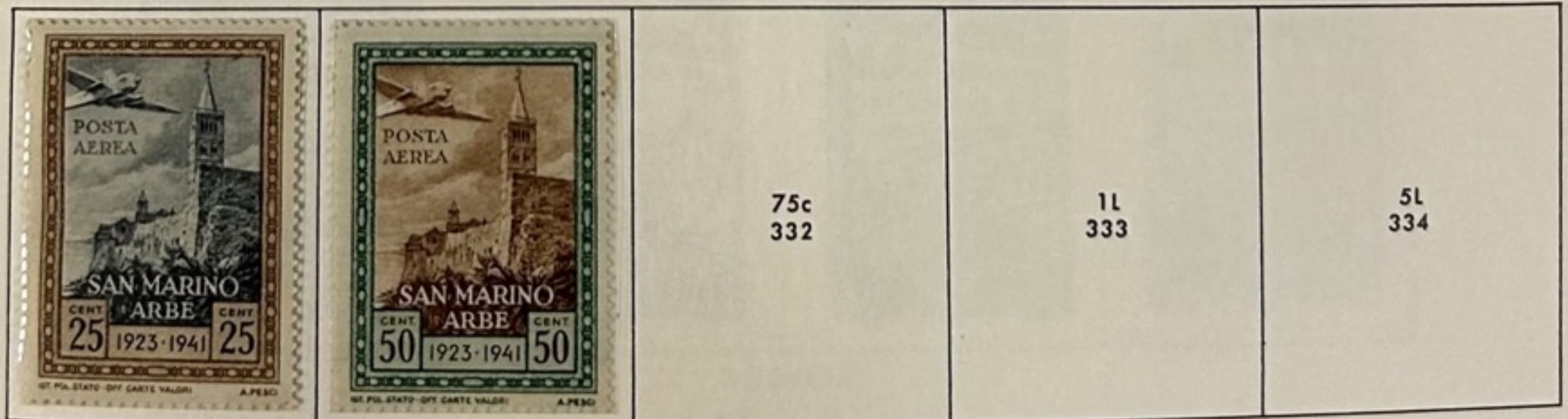
328



195



329



C21

C22

C21-C25

75c  
332

1L  
333

5L  
334

# SAN MARINO

ISSUES OF 1942-43



200



202



201



203-212

# SAN MARINO

ISSUES OF 1943



213-214



215-227

# SAN MARINO

ISSUES OF 1943



C26

C27

C28



C29

C30

368

369

C26-C33

C33



C34-C39

# SAN MARINO

ISSUES OF 1943



228-238



E8-E9

# SAN MARINO

ISSUES OF 1944-46



241



825



c 81



c 40



242



243



244



245



246



247



248



249



250



250A



251



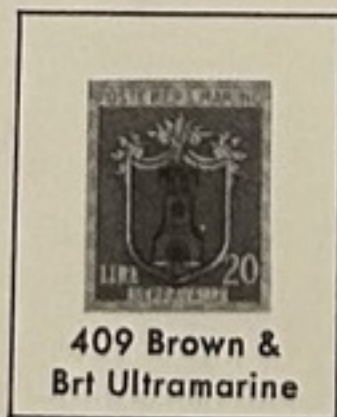
252



251A



253



409 Brown & Brt Ultramarine



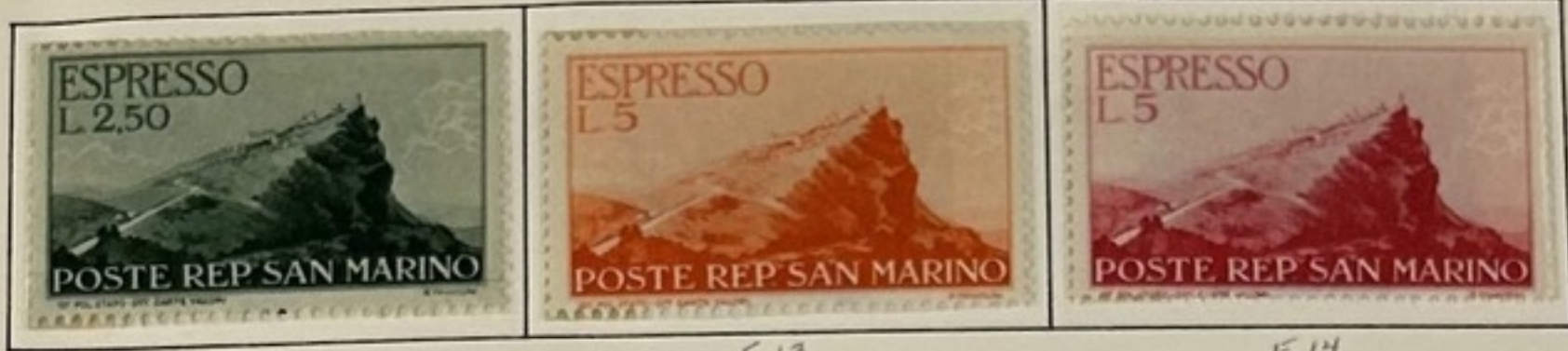
2256



254

# SAN MARINO

ISSUES OF 1945-50



E12

E13

E14



415

E16

E22

418



431

J47



J65-J80

# SAN MARINO

ISSUES OF 1945-46

Perforated between; watermark crown



# SAN MARINO

ISSUES OF 1946-47

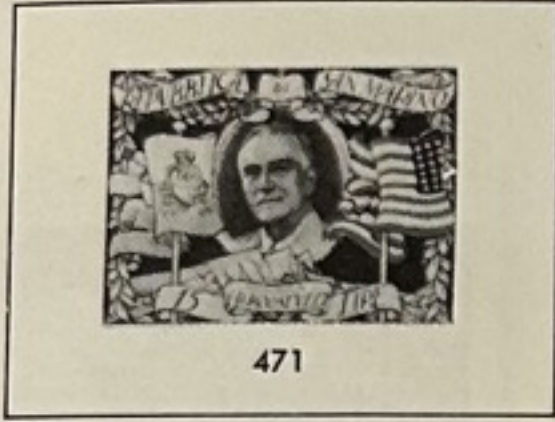


257



# SAN MARINO

ISSUES OF 1947

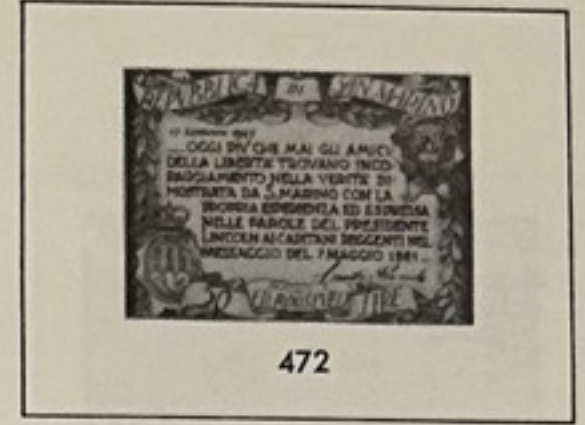


471



473

257A-257F



472



C51A-C51H

# SAN MARINO

ISSUES OF 1946-47



258



B26



259



257G



257H



C51K



257I



C51L



C51J



B26A-B26C



# SAN MARINO

ISSUES OF 1947



C52



260-265

C53



B37-B38

# SAN MARINO

ISSUES OF 1947-50



C54



E17-E19



E19-E21



277



C56

# SAN MARINO

ISSUES OF 1947-49



266-271, c55



272-276



DISPLACED  
OVERPRINT

294-295

# SAN MARINO

ISSUES OF 1949-50



539



537

540

542



# SAN MARINO

ISSUES OF 1949-51



296-303



C57-C61



304, C62, C65

# SAN MARINO

ISSUES OF 1950-51



C63-C71



C72-C74

# SAN MARINO

ISSUES OF 1951-52



305-306

C 79



307



582



583



320



321



322



323



602



320-326

325



604



C 81

13

# SAN MARINO

ISSUES OF 1952



308

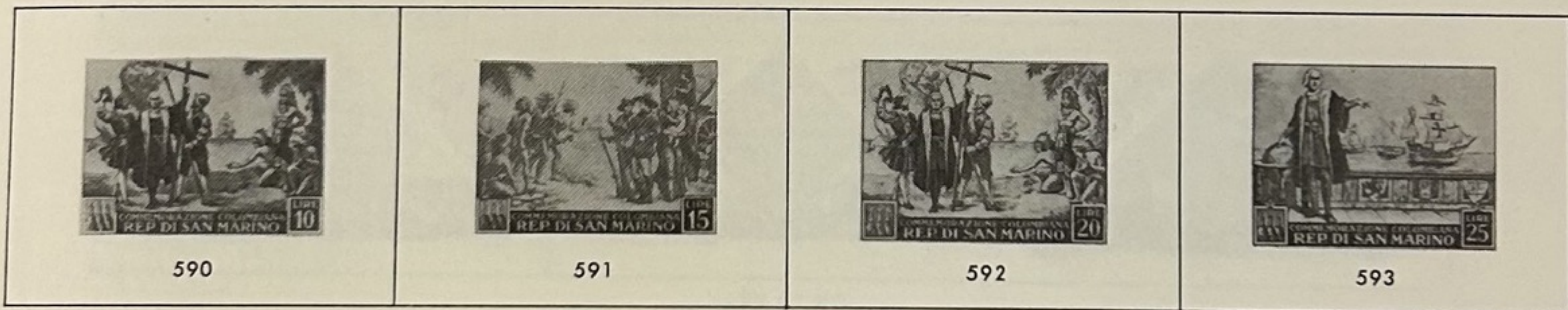
309



310

311

312



590

591

592

593



317

318

319

# SAN MARINO

ISSUES OF 1952-53



C 82 - C 87

# SAN MARINO

ISSUES OF 1953



C90



327-334, C90



335

# SAN MARINO

ISSUES OF 1953-54



336-344

# SAN MARINO

ISSUES OF 1954-55



345-355

# SAN MARINO

ISSUES OF 1954-56



356-357, c92



c93



358



385



c94



359-363



373



374

# SAN MARINO

ISSUES OF 1955-56



364-372, C95



386-388



# SAN MARINO

ISSUES OF 1956-60



375-384

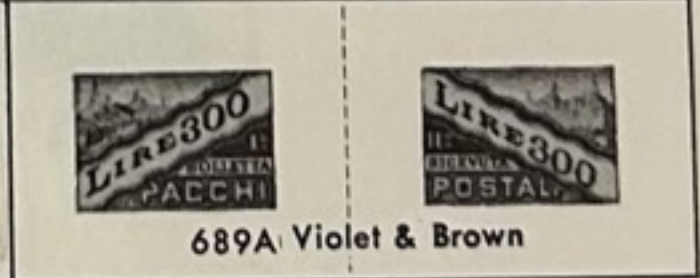
## Watermark Multiple Stars



Q37



Q38



689A Violet & Brown



689B



Q39

# SAN MARINO

ISSUES OF 1956-61



C96



473

392



389

390

474

391



475

476

393



411

SAN MARINO

ISSUES OF 1957



394

395

396

397

398



399

400

394-403



404-410

# SAN MARINO

ISSUES OF 1957-58



414



C97



415



426



412-413



C100

# SAN MARINO

ISSUES OF 1958-59



416-425



C107

# SAN MARINO

ISSUES OF 1959



C101-C105



427432, C106

# SAN MARINO

ISSUES OF 1959



433



435



435



436



C108



C110

439-445

# SAN MARINO

ISSUES OF 1959-60



437

C109



438



446-455

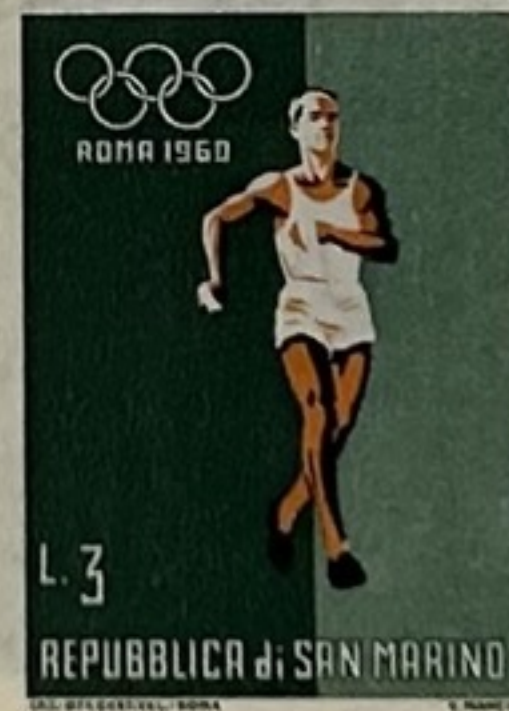


456-465, C111-C114

1960. OLYMPIC GAMES, ROME  
Souvenir Sheet



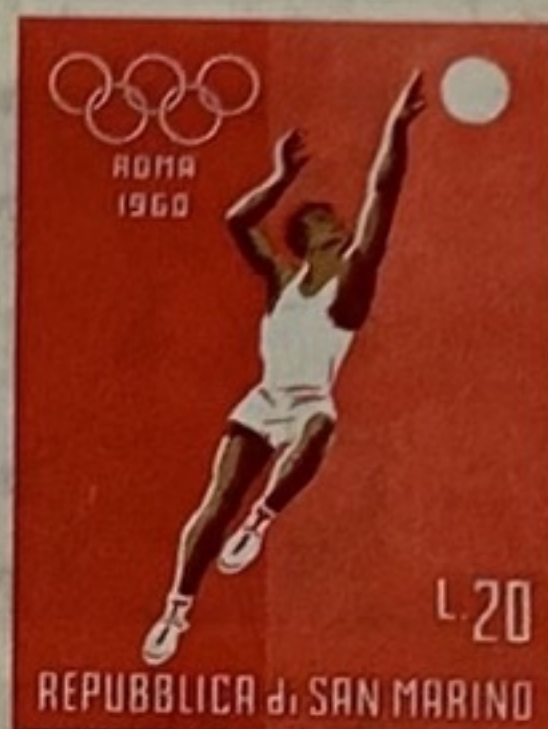
REPUBBLICA DI S. MARINO



771A



REPUBBLICA DI S. MARINO



7928

1960. OLYMPIC GAMES, ROME  
Souvenir Sheet

REPUBBLICA  DI S. MARINO



# SAN MARINO

ISSUES OF 1960



466-470



C115



471

C116

SAN MARINO

ISSUES OF 1960-61



815



442



490



474-486



487-489

# SAN MARINO

ISSUES OF 1961-62



491-93



494-508

# SAN MARINO

ISSUES OF 1962



509-518



519-528

# SAN MARINO

ISSUES OF 1962



529-538

SAN MARINO

ISSUES OF 1962-63



540-549



541

539

# SAN MARINO

ISSUES OF 1963



554-561



564-568

# SAN MARINO

ISSUES OF 1963



569-570



572-581

SAN MARINO

ISSUES OF 1963-64



C118-C128



IL FOGLIO



582-591

IL FOGLIO



593

582

6

SAN MARINO

ISSUES OF 1964-65



594-603



604-605



607-608

C124

606

SAN MARINO

1965



Q42



Q43



Q44



Q45

# SAN MARINO

ISSUES OF 1965



609-611



612-620

# SAN MARINO

ISSUES OF 1965-66



E26



621



E27



622-625



626



627-632

# SAN MARINO

ISSUES OF 1966



E28-E30



633-638



638-642

# SAN MARINO

ISSUES OF 1966



643-652



653

# SAN MARINO

ISSUES OF 1967



654-660



661-663a



664



Q47



665-670

# SAN MARINO

ISSUES OF 1967-1968



671-675



676



677-686



687

SAN MARINO

ISSUES OF 1968-69



688-691



695-698



692-694

SAN MARINO

ISSUES OF 1969



701-702



699-700



703-709



710-712

# SAN MARINO

ISSUES OF 1969-70



713-715



716-727



729



728



730

# SAN MARINO

ISSUES OF 1970



731-732



733-735a



736-745

# SAN MARINO

ISSUES OF 1971



746-748



749-750



751-753



754-757



# SAN MARINO

ISSUES OF 1972



OLLI VALI



# SAN MARINO

ISSUES OF 1972



777-786



Q.46



787-788



789



C.129



490-794

# SAN MARINO

ISSUES OF 1973



498-499a



800



NDS

NDS



801



L.1

SAN MARINO

S. A. , LA



L.2

SAN MARINO

S. A. , LA



L.3

SAN MARINO

S. A. , LA



L.4

SAN MARINO

S. A. , LA



L.5

SAN MARINO

S. A. , LA



L.10

SAN MARINO

S. A. , LA



L.25

SAN MARINO

S. A. , LA



L.50

SAN MARINO

S. A. , LA



L.90

SAN MARINO

S. A. , LA



L.220

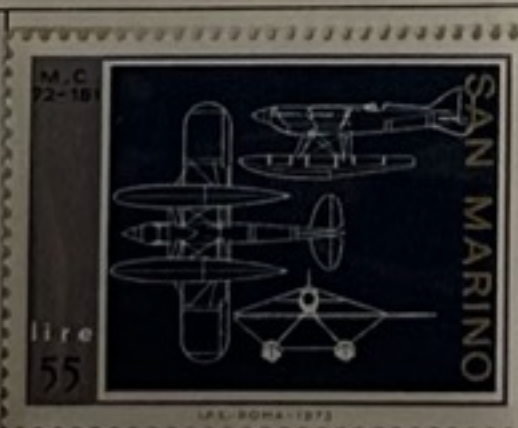
SAN MARINO

S. A. , LA

804-813



25



55



60



90



220

814-818

# SAN MARINO

ISSUES OF 1973



819-827



828-831



832-839

# SAN MARINO

ISSUES OF 1974



840



842



841



848-849



C130-C132



843-844a



850



852



851

# SAN MARINO

ISSUES OF 1975



853



858



854-854



859



860-864

# SAN MARINO

ISSUES OF 1975



867



868



869-871 a



865-866 a



872-874



SAN MARINO

1976



889-890

891

885-884



845-884

81

# SAN MARINO

ISSUES OF 1976-77



898



892



894



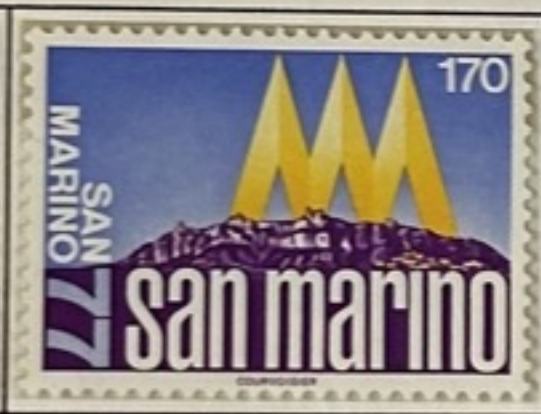
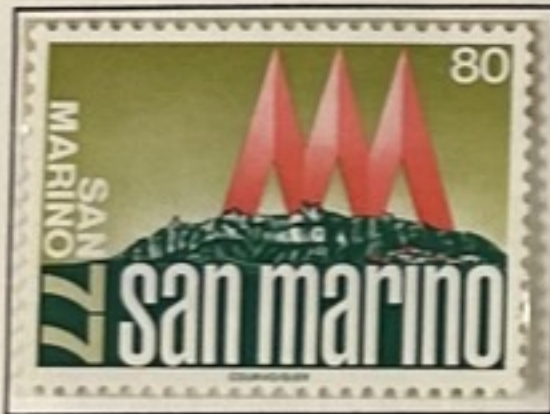
906



895-896a



907



897-899

C 133



900-905

# SAN MARINO

ISSUES OF 1977



909-910 a



908



917



918



911-915



916a



REPUBBLICA DI SAN MARINO

SAN MARINO SAN MARINO SAN MARINO SAN MARINO SAN MARINO



1000

COURVOISIER



1000

COURVOISIER



1000

COURVOISIER



1000

COURVOISIER



1000

COURVOISIER



CENTENARIO DEL FRANCOBOLLO



# SAN MARINO

ISSUES OF 1977-78



926



929



919-921a



930



924/925



922-923



927



c134/c136



928



931/933

# SAN MARINO

ISSUES OF 1978-79



945



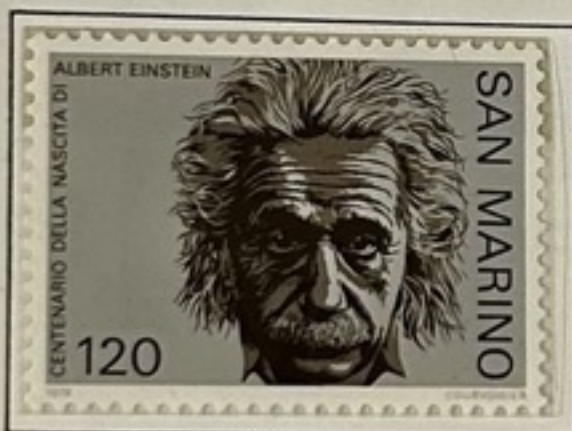
944



946



941/943



947



948/953



948

# SAN MARINO

ISSUES OF 1979



960



959



954/958



961/970

SAN MARINO

ISSUES OF 1979-80



975/977



971/974

978



979/981



982

# SAN MARINO

ISSUES OF 1980



985/986



987-991



994



982



983/984

SAN MARINO

ISSUES OF 1980-81



995-997



1000



998-999



1003-1005



1001-1002a

# SAN MARINO

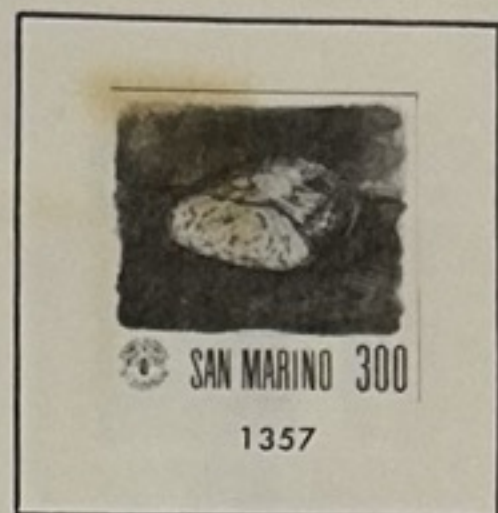
ISSUES OF 1981-82



1010



1012-1013



1018



1014-1016



1017



1031

1020

## TARIFFE POSTALI APRILE 1982

<b>EUROPA</b>	LETTERA (20 GRAMMI) . . . . .	L.	150
	LETTERA RACCOMANDATA . . . . .	L.	450
	CARTOLINA ILLUSTRATA . . . . .	L.	100
<b>ITALIA</b>	LETTERA (20 GRAMMI) . . . . .	L.	300
	LETTERA ESPRESSO . . . . .	L.	1.000
	LETTERA RACCOMANDATA . . . . .	L.	900
<b>S. MARINO</b>	LETTERA (20 GRAMMI) . . . . .	L.	450
	LETTERA ESPRESSO . . . . .	L.	1.450
	LETTERA RACCOMANDATA . . . . .	L.	1.450
<b>EUROPA</b>	CARTOLINA ILLUSTRATA . . . . .	L.	300

**Si prega di usare sempre il CODICE POSTALE.**

( SVIZZERA )



# SAN MARINO

ISSUES OF 1982



1021-1030



1034



1035



1036