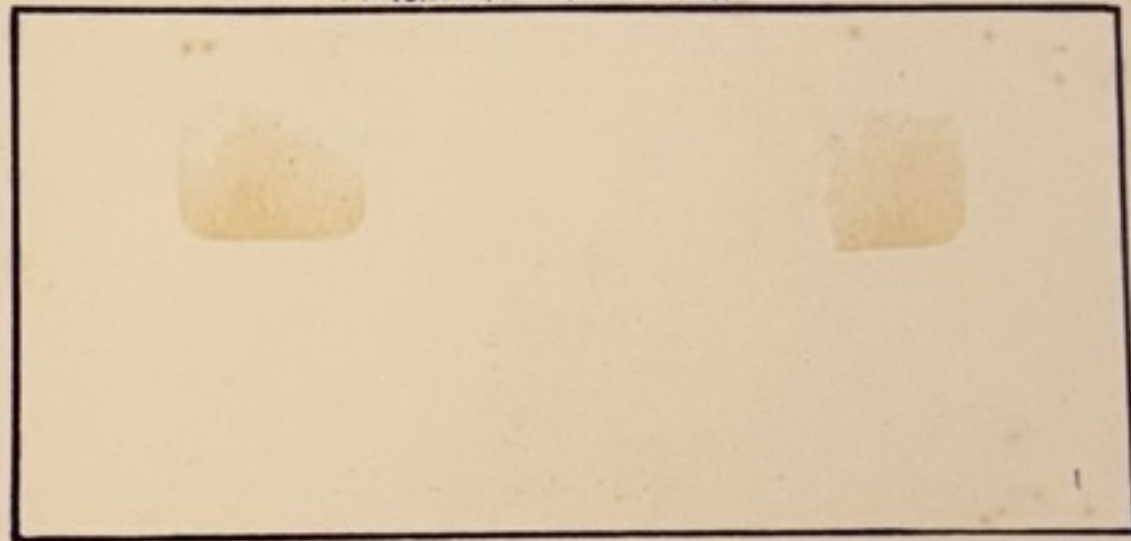
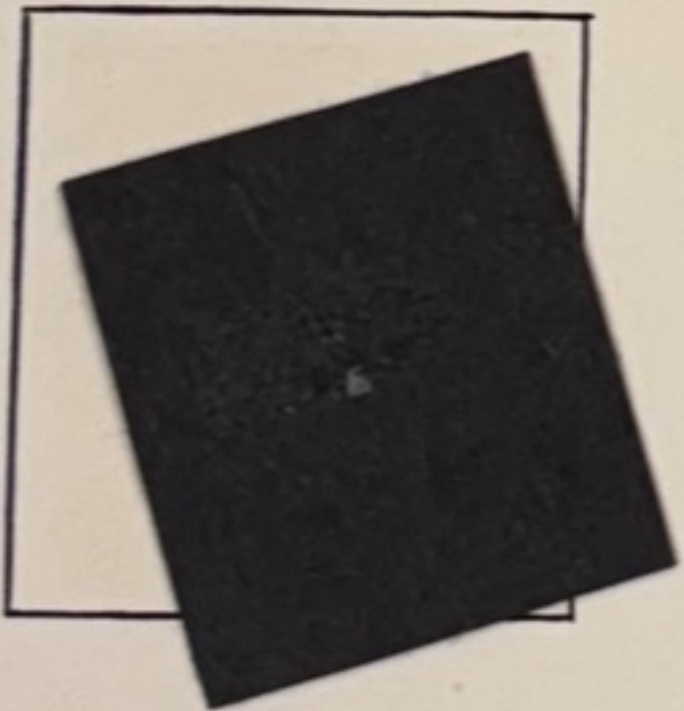




PAQUETAT POSTMARK.





Hunter Penrose "Cigarette stamps"

English green ink, no watermark, no gum, perfs



English black ink, gummed, watermark multi-trefoil, no perfs



"Test Stamps"

1M Red, German ink, gummed, Multi-trefoil



1M Green, English ink, gummed, Multi-trefoil



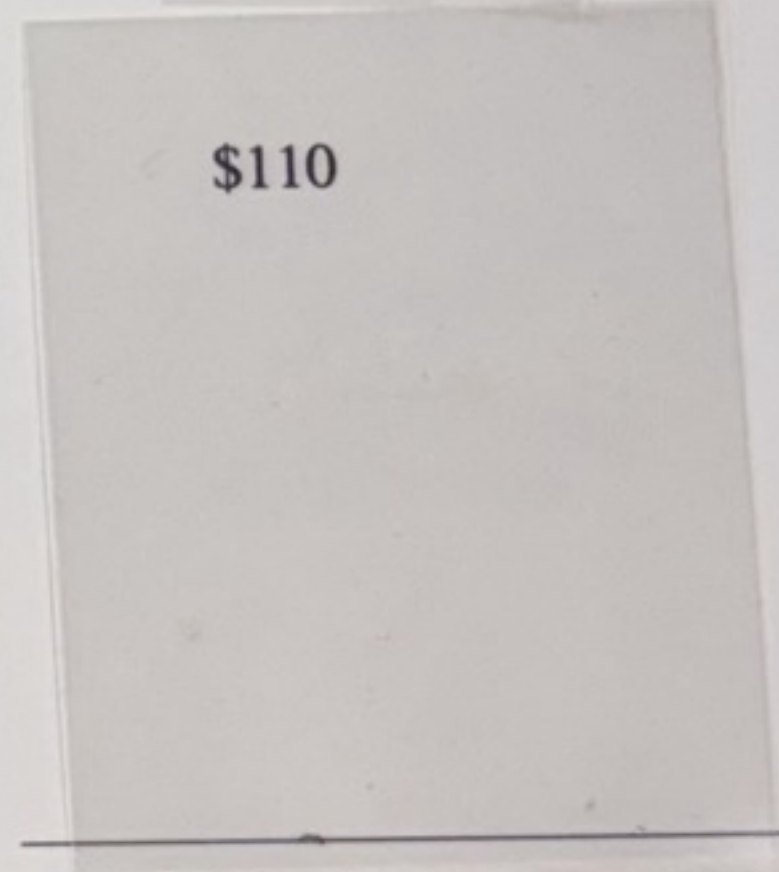
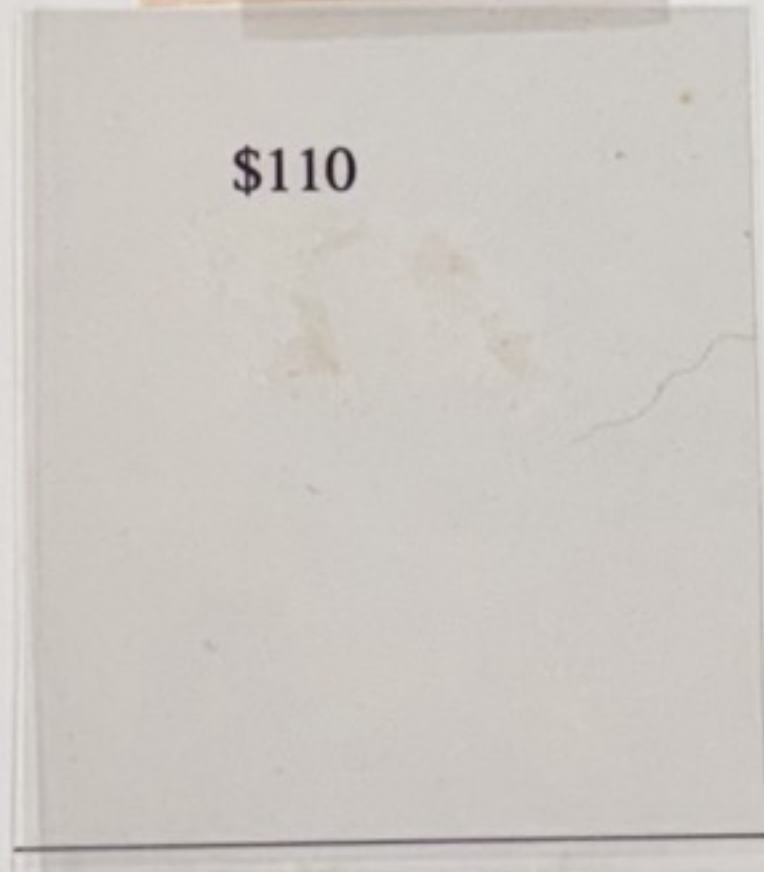
SA 1d stamps

Black 1d Vignette Unwatermarked, ungummed, Imperforate

\$110

Red 1d Frame Unwatermarked, ungummed, Perforated 14³/₄x14

\$110



Paper - Ungummed
Watermark - None
Perforation - 14³/₄x14

LONDON

SOUTH AFRICA

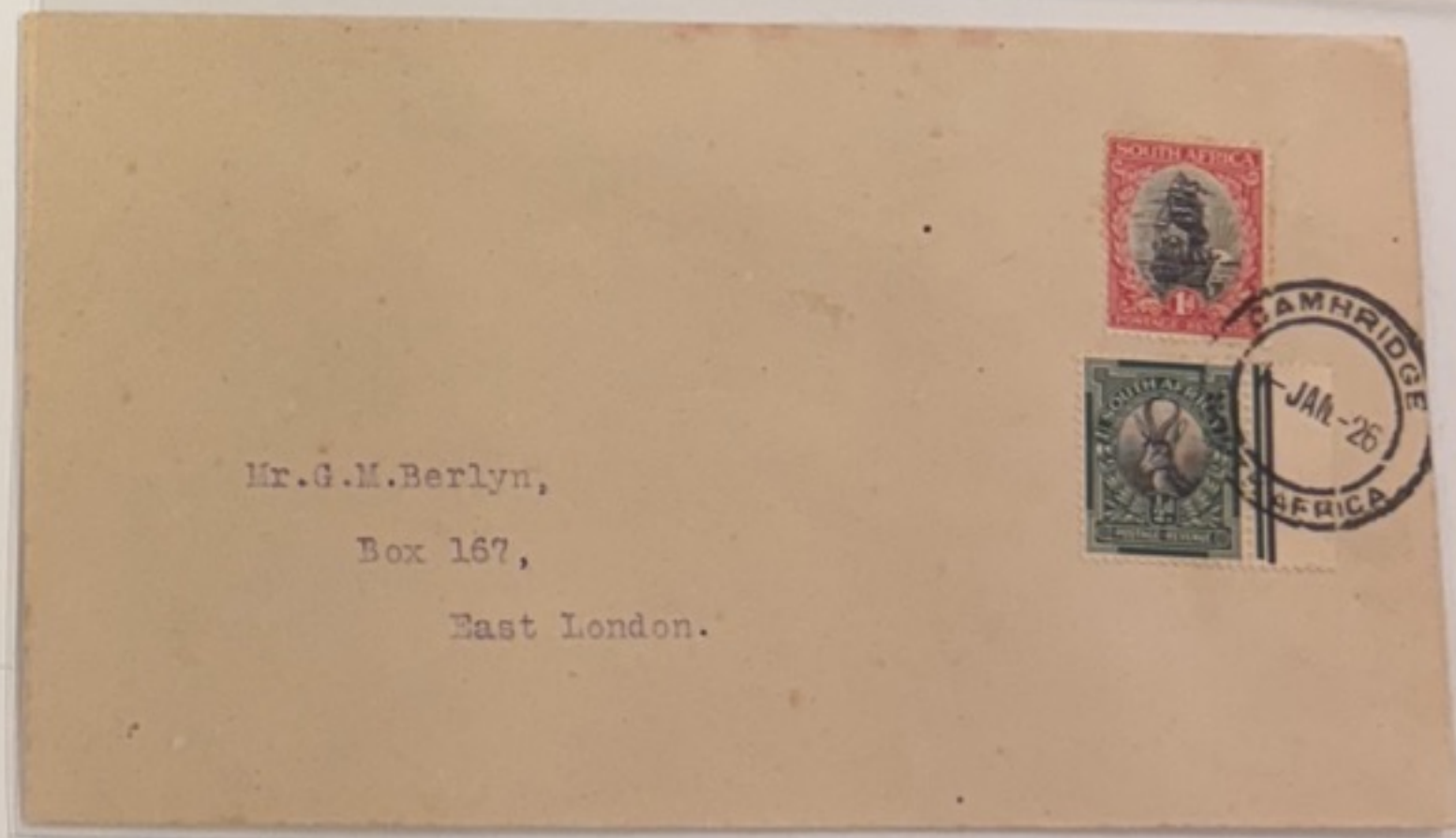
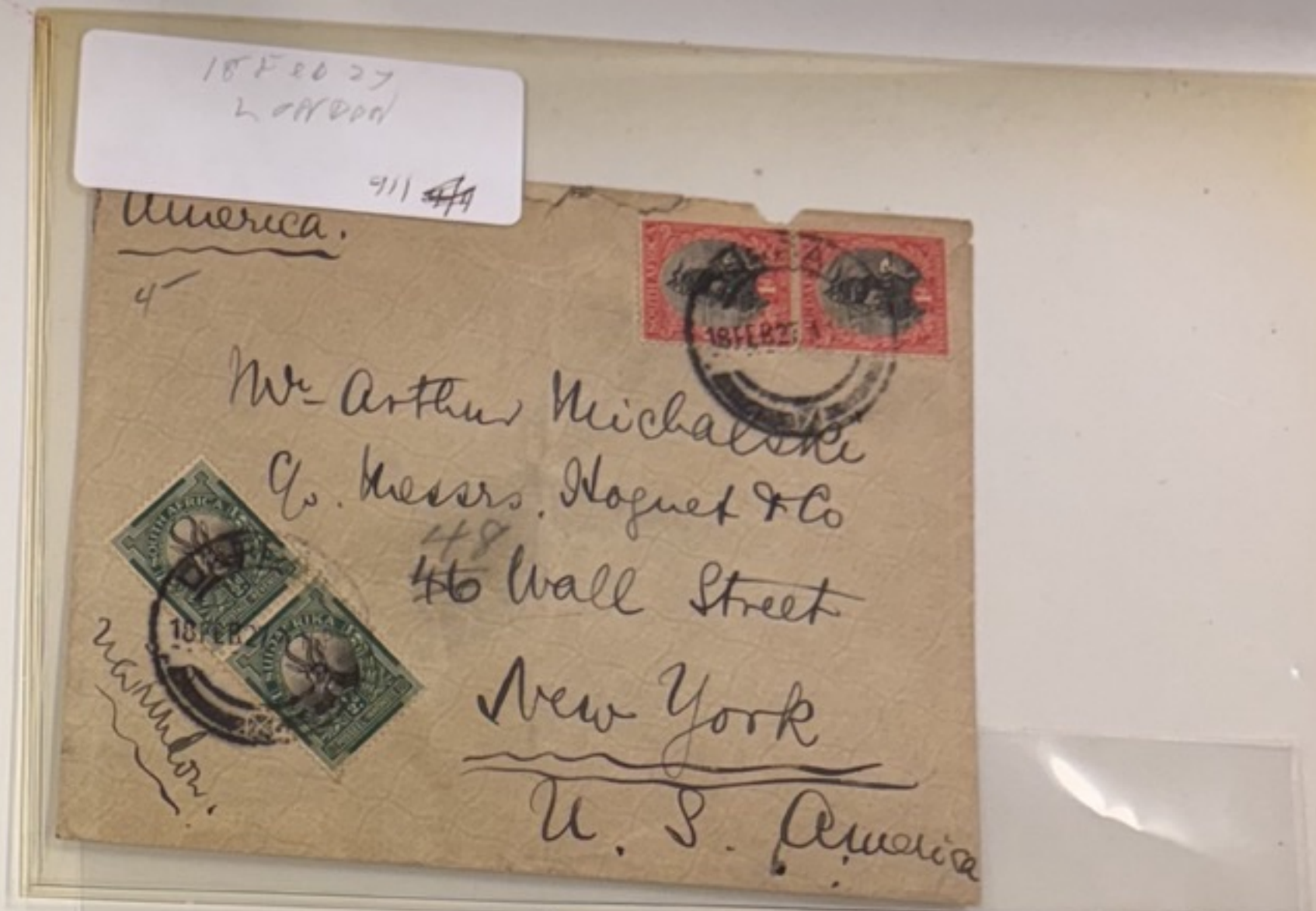
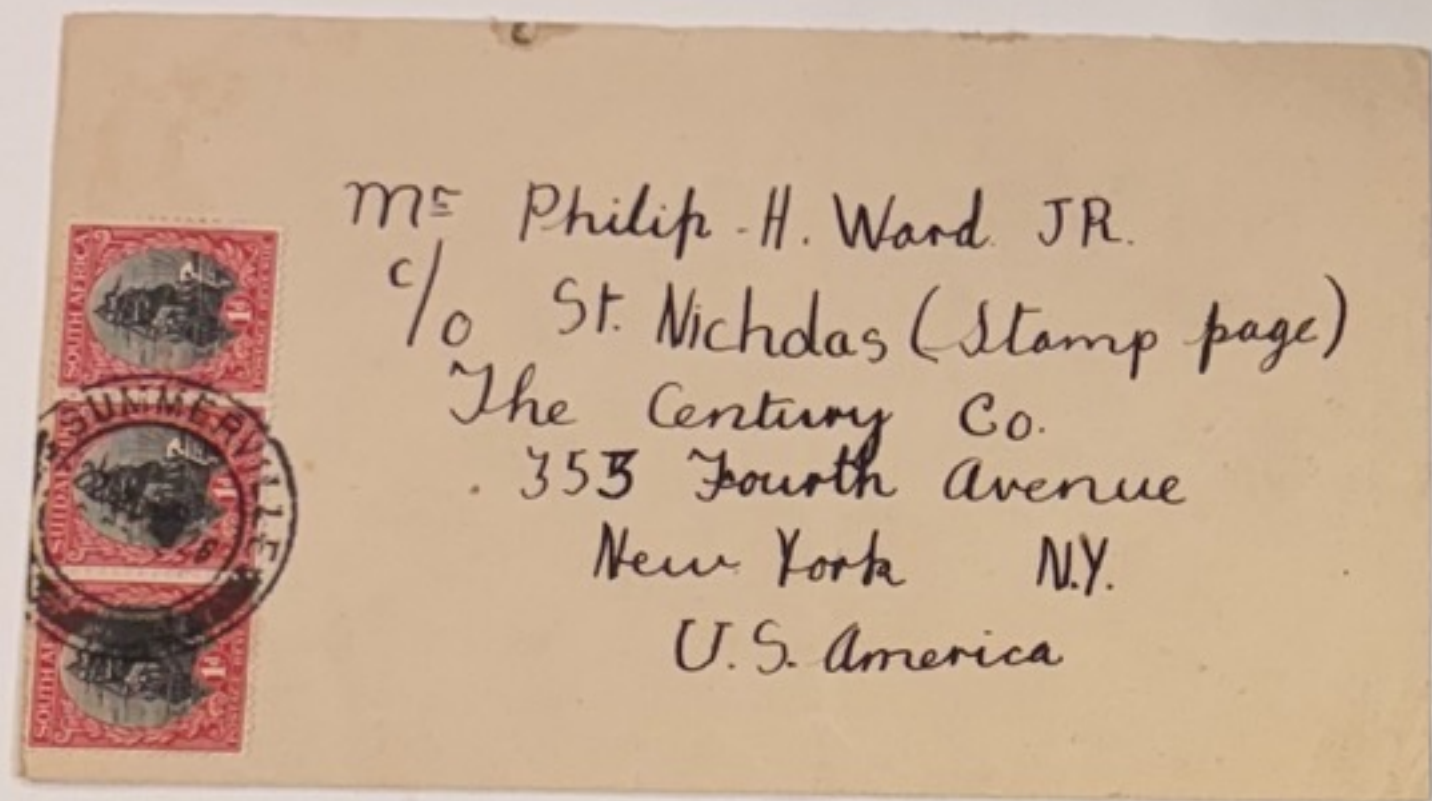
Group "A"



On the



...k. Springbok. Typographed. Perf. 14 1/2
... by Waterlow and Son, London, until
... office in Pretoria took over printing
... margin copies or dated stamps, classifying the London and
... is practically impossible, as the same plates were used for each
... and color variations are practically nil.



V13 LONDON



W.T. ...

V22 III 1215 CALADASH

IMP! INSTAL PACRIS



II 11/2, V12 ↑ THUNDERBOLT

V14

IT 177 TAKHRAF V7

SM 406-00

BUKSA103

VA - W on STEAN

VC - W on MAST

~~IT 177 TAKHRAF V7~~
V6



V22
STAN LIGHT



V14

v1?



v2

1876

v5

v4 1877

DOT 05

North - v12

v13 2



~~Handwritten scribble~~

~~DOT 05~~

v22 - CALANCAH

v22 - early?

100 [] v23
15/8

BOOK 07 - BOOK 08





White
leaf
Pret



P
255



1 1927

1550P I

Varieties, Cover



LSA

"Hickey" Foreign matter on plate.



Plate 7



155 3
N2-18/10



1927 1d
Pretoria
155 2



Plate 2
til



SOUTH AFRICA



1d

POSTAGE-REVENUE

SUIDAFRIKA



1d

POSSEEL-INKOMSTE

SUIDAFRIKA



1d

POSSEEL-INKOMSTE

SOUTH AFRICA



1d

POSTAGE-REVENUE

SOUTH AFRICA



1d

POSTAGE-REVENUE

SUIDAFRIKA



1d

POSSEEL-INKOMSTE

SUIDAFRIKA



1d

POSSEEL-INKOMSTE

SOUTH AFRICA



1d

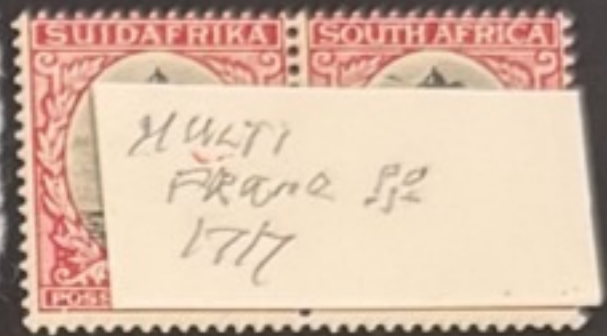
POSTAGE-REVENUE



15/8 v4
8/51
DARK
7-27

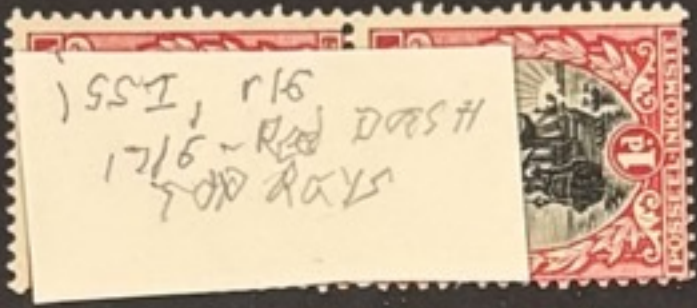


?? June, 1930
= Issue 1 or 2, probably 1



MULTI
FRANK 52
17/7

R-1 G2 D1
155 I



ISSI, r16
17/6 - Red DASH
FOR ROYS



B
7 9 3 8

Red line, fore of ship, runs
to top and bottom margins 7/12



ISSI
2/5
R



SUID





E

1

0

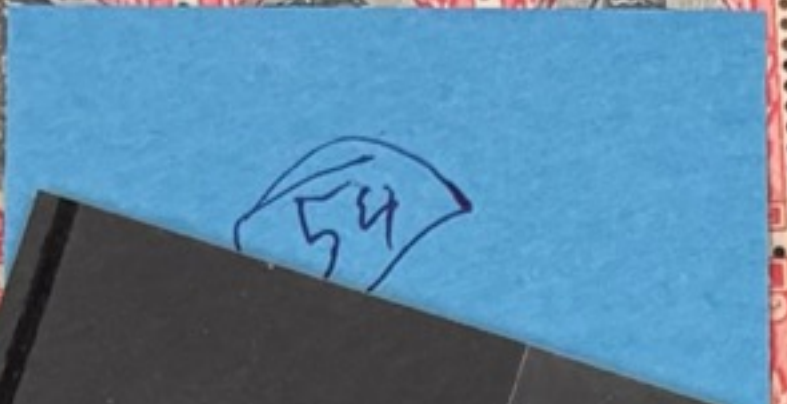
8

6

158 £42
25/4
DIX 47



Waterlow trial on paper
Black Frame. Imperf
R14/7,8 noted



complete design took place on various papers and different inks

inks unspecified

257/16

DIX 51
Gummed
Esparto paper
English black ink
Unspecified red ink
'3 P AIR'



15x14

wmk clover leaf



complete designs on unwatermarked paper

257/16
DIX 51
P.H. 201

German inks



Dix 53



257/16
DIX 51
P.H. 201





37 I

Va. RETOUCHEKD SEA
AND SKY.

Row 10/1

SHINNEY GUM

. 10

V 30 & 31 8⁰⁰

200th Anniversary of the
Wolraad Woltemade Rescue.

1973 June 2



C59 4 Cent Cylinders 531 530 529 A
Phosphorescent paper
No watermark
Perforations: 12 : 12½
Sheets: 100 20 x 5

Maraoon/Olive/Black	.10	.05
Control block of four		
Cylinders 531 530 529 A	.40	



C60 5 Cent Cylinders 528 527 526
Phosphorescent paper
No watermark
Perforations: 12 : 12½
Sheets: 100 20 x 5

Olive-green/Olive/Black	.10	.05
Control block of four		
Cylinders 528 527 526	.50	



C61 15 Cent Cylinders 525 524 523
Phosphorescent paper
No watermark
Perforations: 12 : 12½
Sheets: 100 20 x 5

Purple-brown/Yellow-brown/Black	.30	.25
Control block of four		
Cylinders 525 524 523		1.25

V
LANTON



57

2011



Jet/deep maroon = Iss 6



57

57

P MAROON



Line left of mast 4/1



Red dot 'A' 20/7



Line across rays 14/11



Line through rays 20/3



Large spot top of 1st ray, 15/2



Broken Left Yard, 7/1



Spot on
zon



Spot serif '1'
12/12



Red dot above
pennant 10/2



SouthAfrica

South Africa SG 43cw/SAH 37Bv12 1931-2 1d Die 1
Issue 7/A, watermark inverted, R15/9 'loose rope'

Murray Payne Ltd
www.murraypayne.com

Condition
VFM

Sort #

000043cw

£14.00



Inv.wmk.

V13, 17/9, Searchlight
+ light color

17/9
520

7-15
20-7

V2

37 J
7-15
yao

Red dot at
2 oclock 15/5

ISSUE
37 J V2
BROKEN
R 9/10

MP variety same I-V2
Black sloping lines in sea

37 J V2
1-5 M

in error of value II

1172

broken frame under P.O. VI

15 x 8

broken frame under P.O. (Afr)

IV

V. 11

Ref. shift
1554

ENTA

BLANKETRYRE PRINT
GENERAL PRINTERS - LITHOGRAPHERS - CARTON MAKERS - BOOK BINDERS



High diver 5/7

CLASS 9 STEEL BLUE



U37C ISS 8 UP 1933
GR/ROSEY RED



U37C ISS 8 INVERT 21/20 + 24
GR/ROSE



18



ISSUE 8 17x1, 17x2



9 Steel blue/rosy mauve
WM up. 1935 cancel



Red mark
Mid 58
Front
RT stamp

DP



Deformed top front
over Africa 1d
10-12



BRK in strand under A
SUID-A 1d



7

r

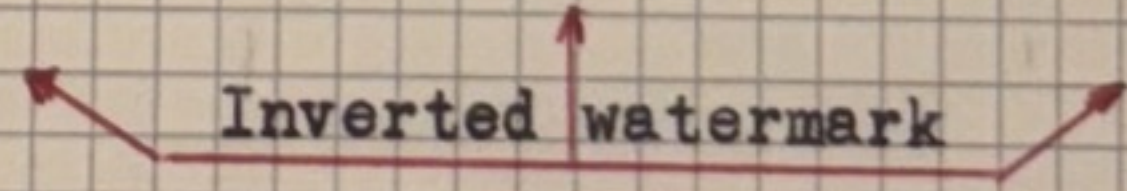


Red line in top
left frame 3/8
Break in frame

Deformed frame
over "FR" of
Afrika.

Red line in e
of inkomste

Break in frame over
"S" of Suid 17/3



SUID

FRIKA

e

S

Any stamp bearing a post mark between mid-1935 and 1938 inclusive, are pretty certain to be a member of this group.

Minor flaws of this group are shown above and the following few pages.



U45 ISS 10 PALE GR/PALE CAR

JAN 36 16 Jan 36
10

110 BNP
10 610



U45 ISS 10 GR-BLK/CAR UP

3 APR 35 10



→ red line through POSS..

19/1



10

*k



45

Ps. 10. V.1.

COLLECTA: PHILATELIC P...



45 R10 V6
610



11



COLLECTA: PHILATELI



Hyphenated

Issue 11, 1935

Imperf, Arrows

the 11 best identifiers
colors are similar

155 ~~11~~ 17x19/11,12 Price 358



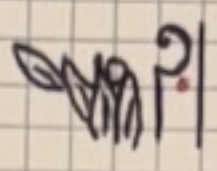
R

Group "G"

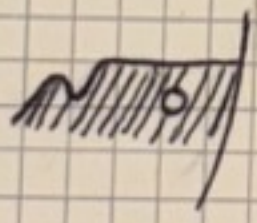
~~scribble~~
14?



White dot and red mark
in top right. 19/6.



White dot in
mountain.



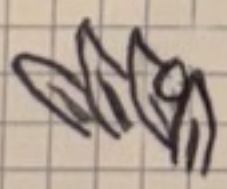
"PO" and "ST" of
postage joined. 3/10

POSTAGE

scribble
n bach
de Hoofst
sterda



White blob between 4th
and 5th leave right. 19/1



"S" of inkomste
deformed. 14/2.

STE

Group "G" is best known for its white flaws.



12

U45 ISS 12 V30 R11/10
BLK LINE UP FROM STERN (A)
SMUDGE 2nd A (E), THIN OVAL TOPS

12

155 12
19/4/37



12 March 1937
issues 10, 11, or 12.
No bud on top leaf
Afrikaans=not 10,11
=Issue 12
1/- airmail to Holland'

from stern
to "U" of South
1/20 10





R. 14 V25
← 614

14

V. 24
11/3 3000
Y000



45 R. 14 V. 25
614

12-16/8-9
15/17



NETHERLAND 79663
2789
BOTH SIDES of

V. 27

Mr. J.H. Broekman,
Stationadi 1
Amsterdam-Zuid,
NETHERLANDS.



By surface mail
R.P.



← 45 . R. 14 R2/2 V23

8000



1/II/47
509
Id = 155 15/-
SA - us
Date + 500 2000
3/-

No 1251

Messrs. Gordon Smillie Inc.
246 Summer Street,
BOSTON. MASS.
U. S. A.

NET,
SBURG.
1933

750
Antenuphal
obtaining certified

FOR AND ON BEHALF OF
BOWMAN, GILFILLAN AND BLACKLOCK.

Facey







↓ 15 - V5
1870
PHOT
CASH

GRP II
15-21
1550
16

10-15
SOUTH AFRICA
1d
POSTAGE REVENUE
1951
45B NR



45B. Pl. 16 VI 2/5 H

14, 151
2, 3
DOT PLAD
ART.

Centers of top
stamps much darker
V8



4/7
T K E A

7/2, 3
DOT
BLOC
7/3



UN507

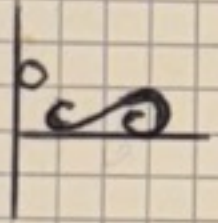
SOUTH AFRICA

15-19

Group "I"

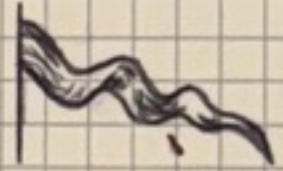


White mark in left lower side 27/5

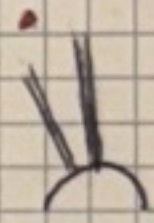


Red smear under pennant Afrikaan stamp 17/7

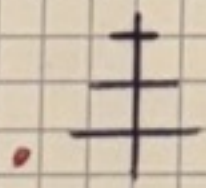
SCRIBED



Red mark in ray's 6/9



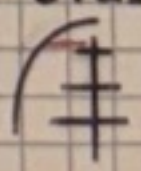
Red mark by bottom yard arm 4/7



Light sky 20/2



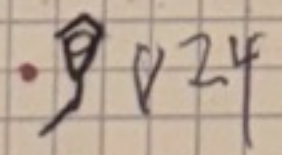
Red line from yard arm to oval 4/6



155
19



Red by left rear lantern 20/4



Red mark in "1" 12/3

1



SUIDAFRIKA



1

POSTSEEL INKOMSTE

SOUTH AFRICA



1

POSTAGE REVENUE

SUIDAFRIKA



1

POSTSEEL INKOMSTE



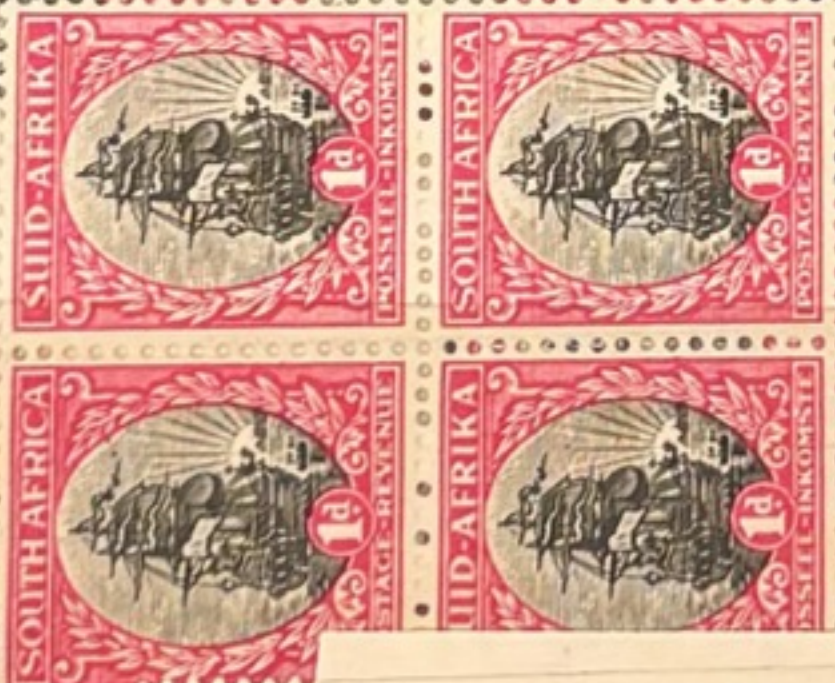
Cat.No. 15520, V29
 aged LH NH
 VF EF
 et Single Block
"SEAGULL" LEFT OF YARDARM
 Selling Price 2⁰⁰



Cylinder No. 6 B



Cylinder No. 6 B



Plati 21

6 A

Cylinder No. 6 B





Black lines through stamp

21 5/15/10
↓ 15/4



18-9/1
LATER
Heavy retouch on ships hull

5/4 458

V32 21
15/4



21 458

V33 10/10



21 458



d=2.5 RM 18!
dx 5 WP

15521
~~DATES~~
16, 12/11, 12
F K
ENG
R16



19

5/1

s on vignette



458 V35 V36
21 peak
19/9

1d Group V Issue 21
July, 1948

Hyphenated,
Unscreened
Cyls 6A/6B

R18-20/1-12

V27, Multi Down-slanting red line from
top of wreath 19/11 to 20/12 = Iss 19, 21

V40, 19/8, Numerous faint red dots in
rays = Iss 21

V41, 19/9, Small oval L, 18/5
= Iss 21

68

Issue 21

122

Rows L 6A and R 6B

wilson jones.

Cylinder No. 6 B



ue of the
sheets. I



ve flaw
row



V red dto lower yard TR
V Vert line L frame TL & BL
= Iss 21

Cylinder No. 6 A



Handwritten notes on a yellow sticky note: "12/3", "DPT", "CMT", "WANT", and a circled "2".



Handwritten note: "Red dot h of oval."



Handwritten notes on a blue sticky note: "1949" and a circled "2".

Cylinder No. 6 A

19/2



Cylinder No. 6 B

19/2

2/0/49

19/9

19/8

2/0
line - 1d

SOUTH AFRICA

22-24

Group "J"

Quadruple negative flaws of group "J".



POS

FR

MSTE



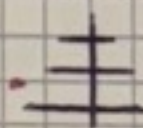
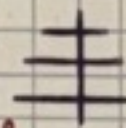
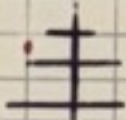
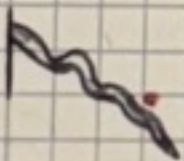
Red above
pennant 11/8

19/3

9/5

11/5

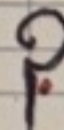
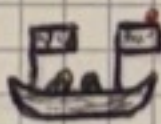
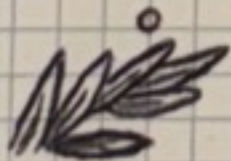
Red by yard arms



White dot 2nd left
top leave 10/8

Red, by flag
boat 5/2

Red by right
hook 11/2



This group is printed wholly by photogravure, with the aid of a grid screen instead of the screen of rotogravure. This makes a difference in the appearance of the stamps and, in particular, tends to obliterate the finer points of the design. The screen used had 150 lines to the inch, for clearer printing a much finer screen should have been used.

71

Issue 22 .

Color 76/14 = Iss 22
Weight = 14.5mm

125



14

1950
P22

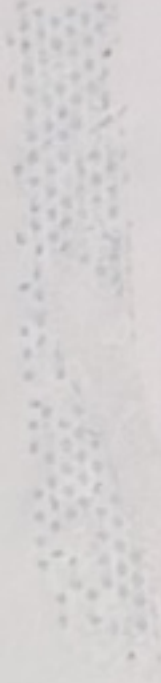
76

R19,20/1,2
V2 Dot under 1st E
=Off 25 =Iss 2

1d Group VI Issue 22
September 1950

Hyphenated, Screened
Cyls 76/14

This issue shares the frame cylinder with Issue 24. The vignette cylinder is unique, but has no recorded flaws! Official Set 25 provides some ID. Short 2 month life, so 1 printing. R&L arrows all the same.



Cyl #s 76/14 = Iss 22
 Margin = 14.5mm



R19,20/1,2
 V2 Dot under 1st E 19/2
 =Off 25 =Iss 22

R1-3/1,2
 V6 Broken C in OP on 3/2
 =Off 25 = Issue 22

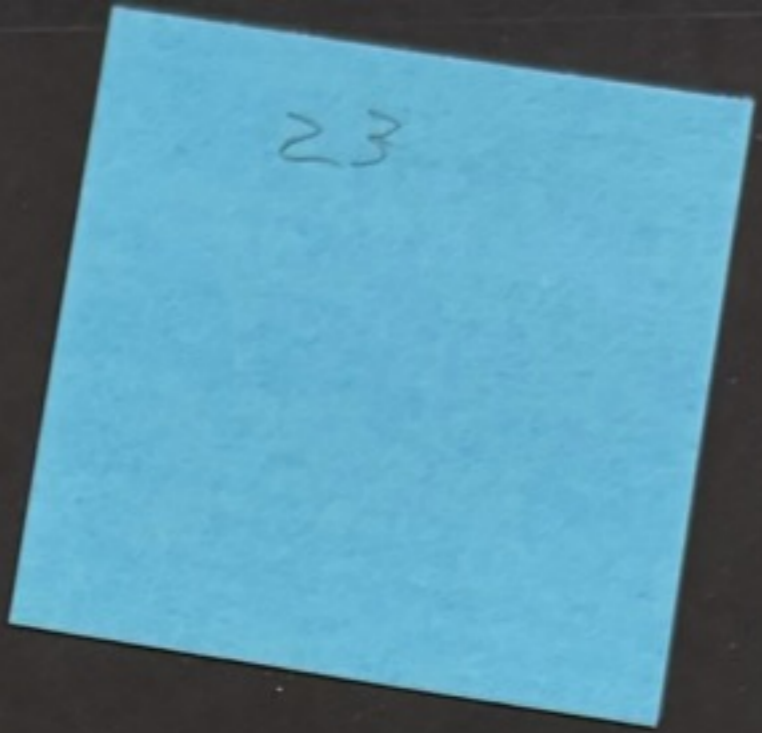


R6,7/1,2
 Top Arrow
 Iss 22



R6,7/18,20
 Bottom Arrow

R10,11/11,12
 Right Arrow
 Iss 22, M = 14.5mm



R1,2/6,7
 Top Arrow = Iss 23
 R10/6, faint line curving up and
 left from end of pennant = 70
 2304 29
 23

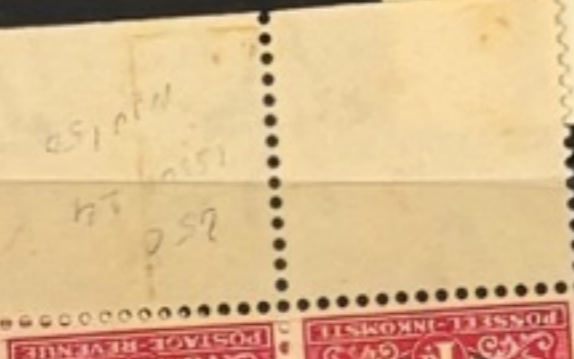




2244
18



U45C SEPIA BLK/MAGENTA-CAT
155 24
7/NOV/50



102

V2



Sau 1947 1150 04
A# ASD =

CAT. PRICE
OUR PRICE

2244
V-10 13/8



45C
2244
V-10 13/8



2244
V-10 13/8

5769

3c



P25
1951



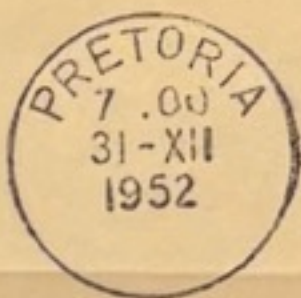
Iss 25, Rose Carmine
June 1951 = Iss 25



V 19/5, 2 dots over H of
South = Iss 25
shall JUREK



line
= Iss 25



PADVEILIGHEID HANG VAN U AF

To G. and C. Mentham Co.

Dept. 331

Springfield 2, Mass.





54

53



USED
GR-BLKK
SUTHERLAND

Broken left hook

9

IC of AFRICA joined

IC

dot in front
right hook

9



Handwritten notes on a white paper strip, including a blue scribble and the text "1/12 set line by".



Handwritten numbers "13/10" and "12" in the bottom left corner of the stamp sheet.

Handwritten number "12x10" in the top right corner of the stamp sheet.

Handwritten number "13x9" in the middle right corner of the stamp sheet.



26



39/1,2
DOT and 'U1'



U45D ISS 26 x/xy
THIRD SHADE
BLUISH GREY/MAGENTA-CARMINE

20/1
8 over K



Red smudge.
2577



SOUTH AFRICA

25/27

Group "K"



26



26

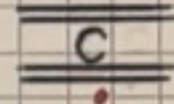
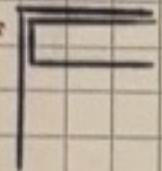


26

Red mark next to top
left frame line 19/9

Red dot next to left
middle frame line 8/1

Red dot under "C"
of Africa 4/8



26

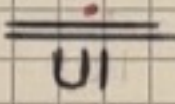
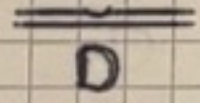


26



Break in top frame
line over "D" of
Suid 20/7

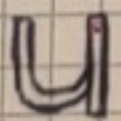
Red dot over "UI"
of Suid 3/2



25



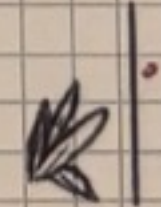
Dot in "U" of
South



10 Black dot
15/9 Red dot r
Black lin
Black dot



Dot outside right
frame 15/1



SOUTH AFRICA

Group "K"



Small black dot in sunrays 14/10
 Small red dot over "AF" 14/11
 3 dot above flag of small boat 15/9
 Red dot on flag of ship 17/9
 Red dot right margin 17/11

Black dot left frame 18/8
 Red dot right margin 19/12
 Black line through "1d" 20/9
 Black dots left of ship above water 20/12

Phones/Fone 1171 & 1172 P.O. Box/Posbus 253 Due Date

GOLDBLATT'S WHOLESALE (PTY.) LTD.
 Cor Buitenkant & Station Streets
 KROONSTAD O.F.S.

£ 15 : 6 : 8 28-8-1954

At Thirty Days After Date, Pay to the Order of
 Barclays Bank (D.C. & O.)
 the sum of 15 Pounds

For value received

HEILBRON, ORANGE FREE STATE

To: Mrs John Pierce
 Heilbron

PAID

HEILBRON, ORANGE FREE STATE
 Alpha-5817

Barclays Bank
 (D.C. & O.)
 Kroonstad O.F.S.

HEILBRON, O.F.S.

SEP 1954

SOUTH AFRICAN SALON OF PHOTOGRAPHY

MR
 2400
 S

155
 25-27

U.S. AMERICA

If undelivered, return to The Johannesburg Photographic and Cine Society, P.O. Box 7024, Johannesburg.

10 NOV 57 195 25

Oliver Machinery Company,
 Wrapping Machinery,
 Grand Rapids
 Mich. U.S.A.

SUID AFRIKA 6d

SUID AFRIKA 6d

SUID AFRIKA 6d

SUID AFRIKA 6d

SUID AFRIKA 2d

Lot
Sale
Cat
Init

No. **E87809**

Ohjwaranga 6. 9. 19 51,

The Standard Bank of South Africa Limited.

Pay Green's Soap and Chemical Works

the sum of Five Pounds 3/9

L 5. 3. 9.

A. Trunsch
A. Trunsch

THE STANDARD BANK OF SOUTH AFRICA LIMITED
TELLER BANKING CORPORATION
JOHANNESBURG (S.W. Africa) (9 214)
25 OCT 1951




P.O. Box 172 Phone 55-1334

A. E. CHAPMAN,
STOCKBROKER.

No. **6560**

313 PRINCE GEORGE AVENUE,
BRAKPAN, *20th September* 1947

RECEIVED from *Mrs. B. J. Stevens*

the sum of *Twenty* Pounds
Shillings and _____ Pence

for *On Account*

For A. E. CHAPMAN,
[Signature]

£ *20* : - : -

RLE 23216.5.46



P.O. Box 172 Phone 55-1334

A. E. CHAPMAN,
STOCKBROKER.

No. **6290**

313 PRINCE GEORGE AVENUE,
BRAKPAN, *13th January* 1948

RECEIVED from *Mrs B J Stevens*


the sum of *One hundred* Pounds
Shillings and _____ Pence

for *a/c*

For A. E. CHAPMAN,
[Signature]

£ *100* : - : -

RLE 23216.5.46



Group "K"

V12



27

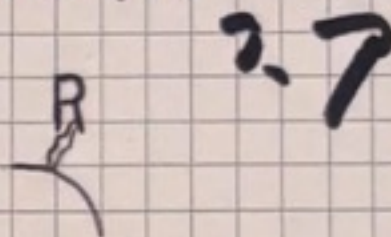


27

Red dot outside
left frame line 20/2

White break from
"R" of Africa
to oval 5/9

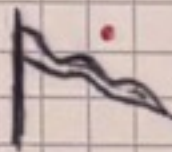
Red break in "O"
of postage 20/11



POS



Red dot by top pennant



V14

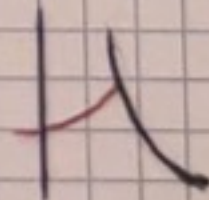
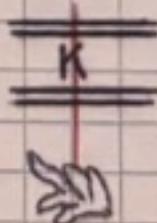


Red mark over "H"
of South

Red line through
"K" of Afrika

Red line from left
oval to frame

H





26

U45D ISS 26 V10



54



48



54



48