



UNIVERSAL PHILATELIC AUCTIONS

CODE : LOTNO :

280544 11605







7863¹⁵
61334
6/12



INDIA SIRMOOR 1899/1900 6p deep green comma after first 'S' variety SG75c cat £400, fine used, couple of blunt perfs £100









S.G. 18
 4M
 H 30p
 4000

2



I 6



2



Date	1892	paper		printer		cat no	54
part		plate					2
work	colour/shade						
remarks	80: 110 81/125						



Date	1895/6	paper		printer		cat no	54
part		plate					5-21
work	colour/shade						
remarks	80: 14 81/6						



Date	1895/9	paper		printer		cat no	54
part		plate					22-29
work	colour/shade						
remarks	Set of 8 80: 14 81/18						



Date . 1892 - 1899
 Cat Nols . Between 542 - 33
 Condition . M.M.

Date	1899	paper		printer		cat no	54
part		plate					30-33
work	colour/shade						
remarks	Set of 4 80: 13 81/46						





597

III (2)

III (3)

III (4)

III (5)

III (1)



599

PRINTING

2nd

3rd

4th

5th



6th

7th

7th 2

3 7th 3 5975

4 5916 4

5917

5

1575



120

11/1 7M A

70 V A

8M VI/3 B

80 VI/3 B

80 B VI/3



IG 9M C

V 2 11M C

II 1 110 C

II 3 12M C

12M C

IV/1



NO 15 2/11

100)

14 U 1/3

14 M 1/7

16 M VI/3



201M

21M

SIRMOOR



V 2

VII 2



SIRMOOR

I 3

I 1

II 4



III 1



IV 2

IV 3

IV 5



V 1

V 1

V 1



V 2

V 2

V 2



1876-1880



45



10



10

1892



2



5



4



7



1



2



3



6



4



3



7



1



?



6



7



2





2nd Printing

1



2



3



4



1



2



2



2



3rd Printing

1

c e

d

I 1



d

2nd Printing

2



2



7



3rd Printing

d



e



1st Printing

1



2



IV PRINTING

1



2



3



4



5



3



1



2



4



2



3



4

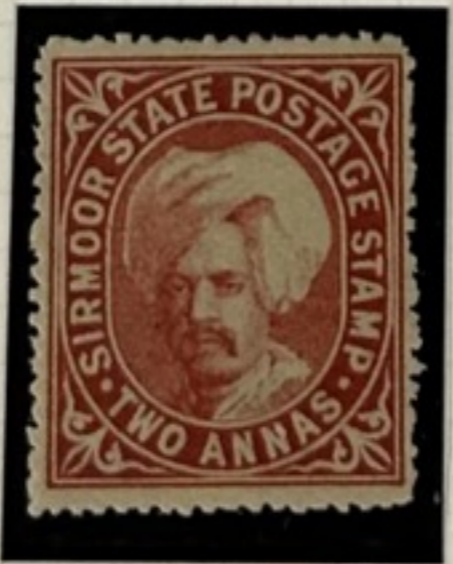


V PRINTING

1892



VII PRINTING
July 1896



VI PRINTING

2



3



repaired frame
line over R of
THREE



3



4



712

I 1

I 2

713

V 1



1891 712

II 2

II 1

II 1

II 4

II 3



x



Inverted 'S'

1892-7 713

III 3

17mm

V 2

III 4

III 3

inv S raised stop



15mm

V 1

15mm

V 2

18mm

V 2

17mm

V 2



17mm

V 1

17.5mm

V 1

II 3

IV 1



1890 711

II 3 puncture



1891 712

II 3

II 2 no stop
lower S



II 1

II 2

II 3



1892-7 713

III 3 inv 1st S
raised •



III 1

III 3

III 4

IV 1



punctured V1

V1



V1

19mm V1

16mm V1



1892-7 T13

V1

inv 1st S raised.

V1

raised 2nd stop



V1

V2

V2

V2



V1



7/3 1892-7
in red

II 3



II 4



II 1



III 5



IV 1



I 1



I 4



IV 1



IV 2



IV 2



IV 5



IV 3

inv 1st 5
raised.



1896 714 VI 2



VI 2



V 2



1898 715 VI 2

VI 1



1900 718 VII 4

VII 4

VII 3

1

4

2



1

2

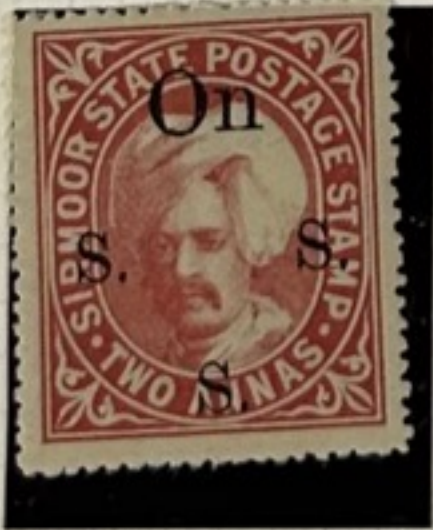
4



1

2

2



714

V 1

V 2



V 1

V 2



715

V 2

1



718

VII 1

2

2



1894 T19 V1



82

V2



V2



V1



V2



V1



no lower S
V2



85

pink puncture T23

VI 1

1896 V1

x



105

89

1895-99 Authenticity doubted

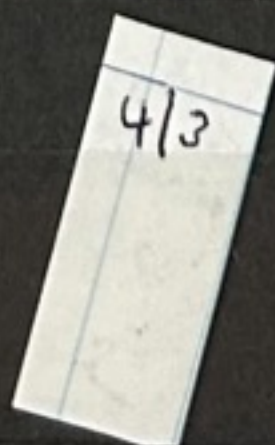
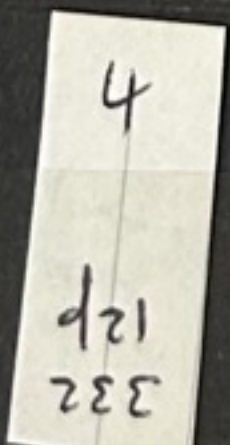
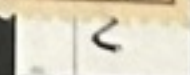
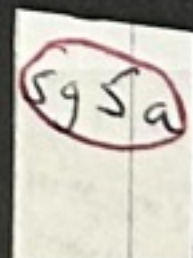
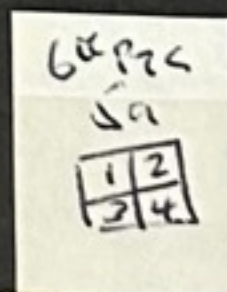
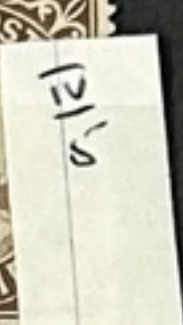
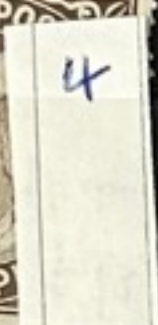
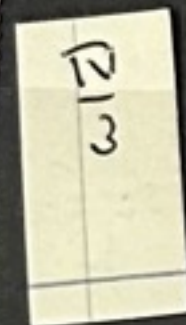
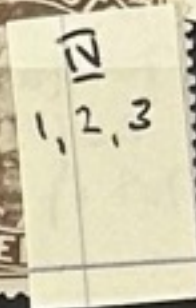
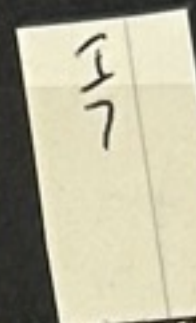
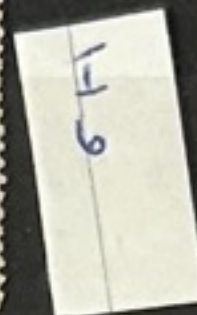
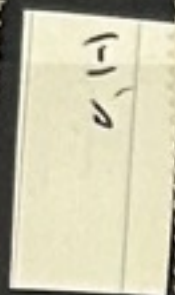
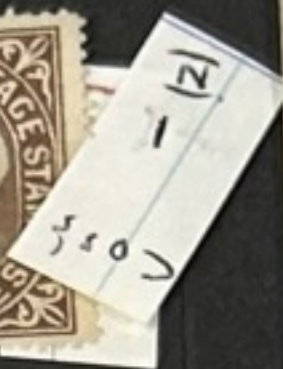


1895-1899



1899







1-3

595



5



7-3



1-2



1-2



2-3



1-2



3-4

6-125 50

1	2
3	4

61



1



2

595



3



3 REPAIRED



4



151-

596a



151 2



151 3



151 4



151 5



151



152

596



153



154
141
212



152



151



152



4
Reversed



II
V



1



2

II 175
56a.
imposed
55



3
162a



3
Reversed



II
1



II
3

56



II
1



II
2
9113





11

211

13

4

57

119

611

12

11

311

411

57a

11

12

13

7b

11

7c

12



1-9
4



2d



1-12A W



514



514
2-5



1/2/3
5
28 →
148



VI
2





12
ds
930



13



14

14

597



15
11
1917



16



17

597a



18

597b



19
2
20



21
3
23-5
182



22



23
13/2/14
Sales



24
3

4
25
146
↑

7d



171-

33
7c



19



24



1
3
20
482
294

598



114



115



116



117
VAR



113



1318

1319
1413



110

598a



1320



1321
a?



1-16
R-1



1/2
2

59
8c



1-1
11
2
2/2

59
8d



1-1
2



1-1
2
2/2



1-1
4



?
NW corner
inner plate
at bottom



2nd N of
Anna.
with dot
in stamp.





108
E-11-75
25



111
a
Circled
to India



110
Tongbo
to
Tongbo



111
a
035



112
a



113
R-11
S
53



112
a
Spines



113
a



I-1

I-1
262
267



I-2
262
267

59
9



I-7
2
65



I-4

6



I-7



Flaws
not
noticed



I-1

59
9a



I-2

I-1

59
9b



I-1
262
267



I-2



I-3



I-2





191-

