

1893. - Imperf.

FORGERIES



1897 - Imperf.

1/2 anna



Value in one group



1 anna

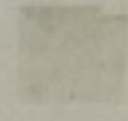
Laid paper



2 annas



4 annas



FORGERIES



1899 - 1906.

(a) Rouletted in colour or in black, horizontally and at end of rows.

1/4 anna



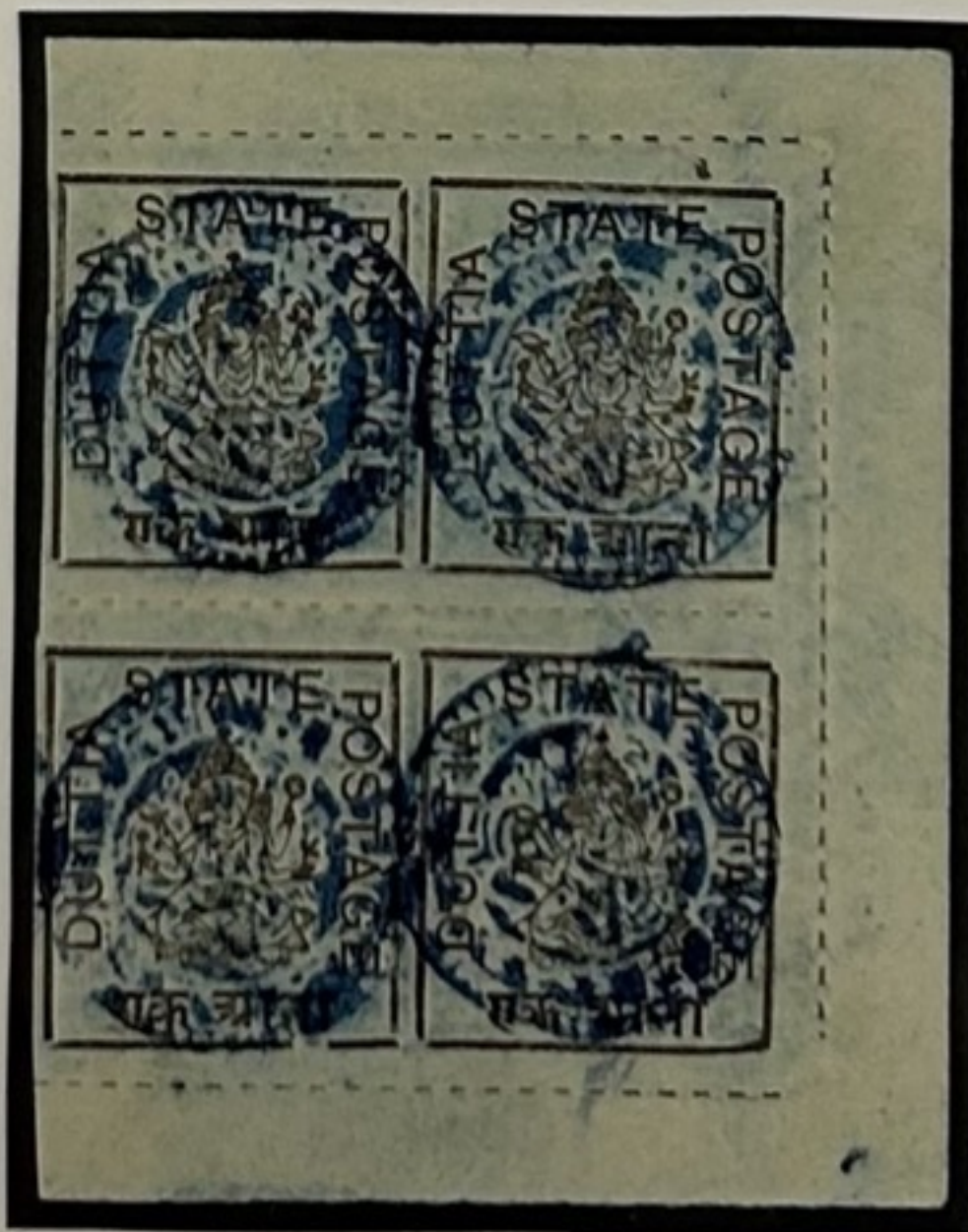
1/2 anna



On yellow-green, pelure paper



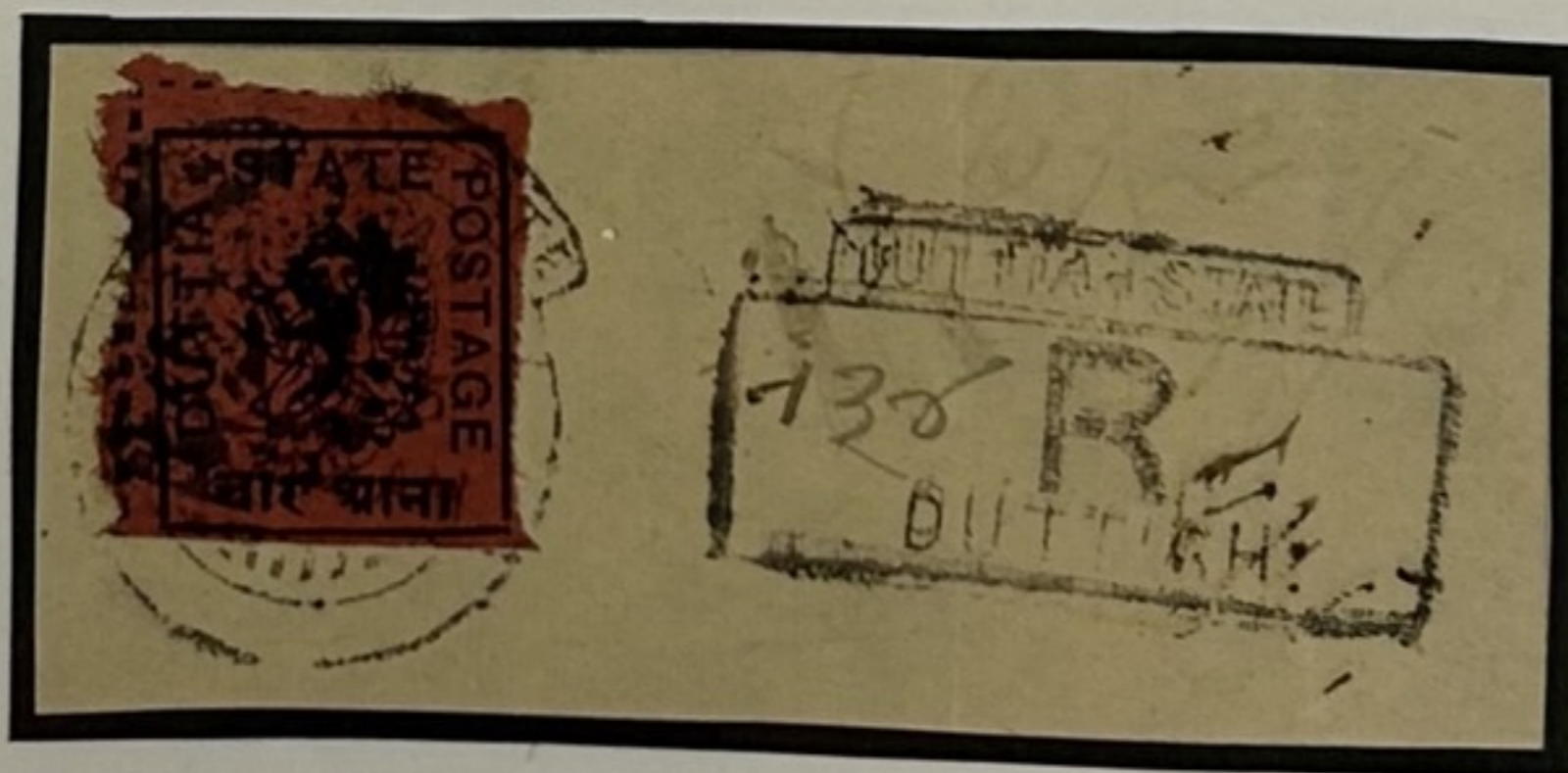
1 anna



2 annas



4 annas



1904 - 05. - Without rouletting. Imperf.



1911. - Perf $13\frac{1}{2}$. Stamps very wide apart.



Stamps closer together

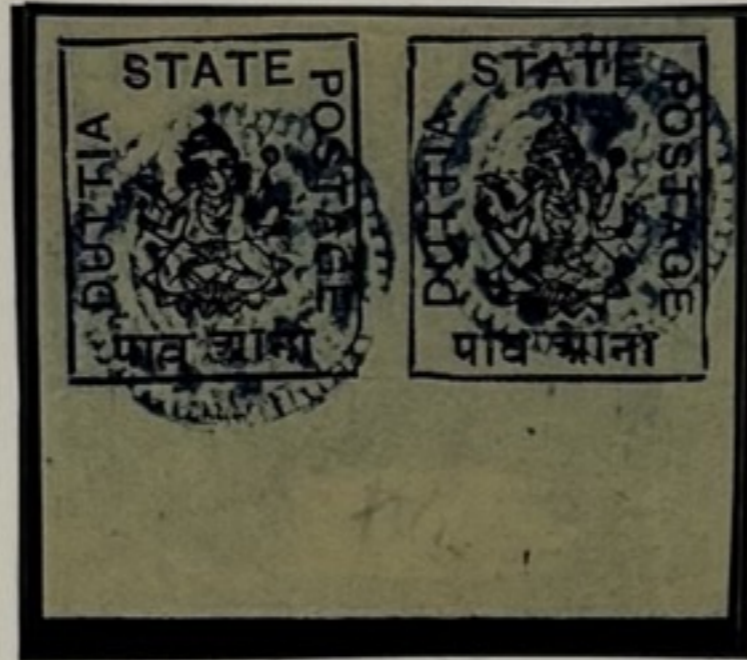


Printed wide apart. Perf $13\frac{1}{2}$ x coloured roulette (1/4 a.) or $13\frac{1}{2}$ x imperf (1/2 a.)



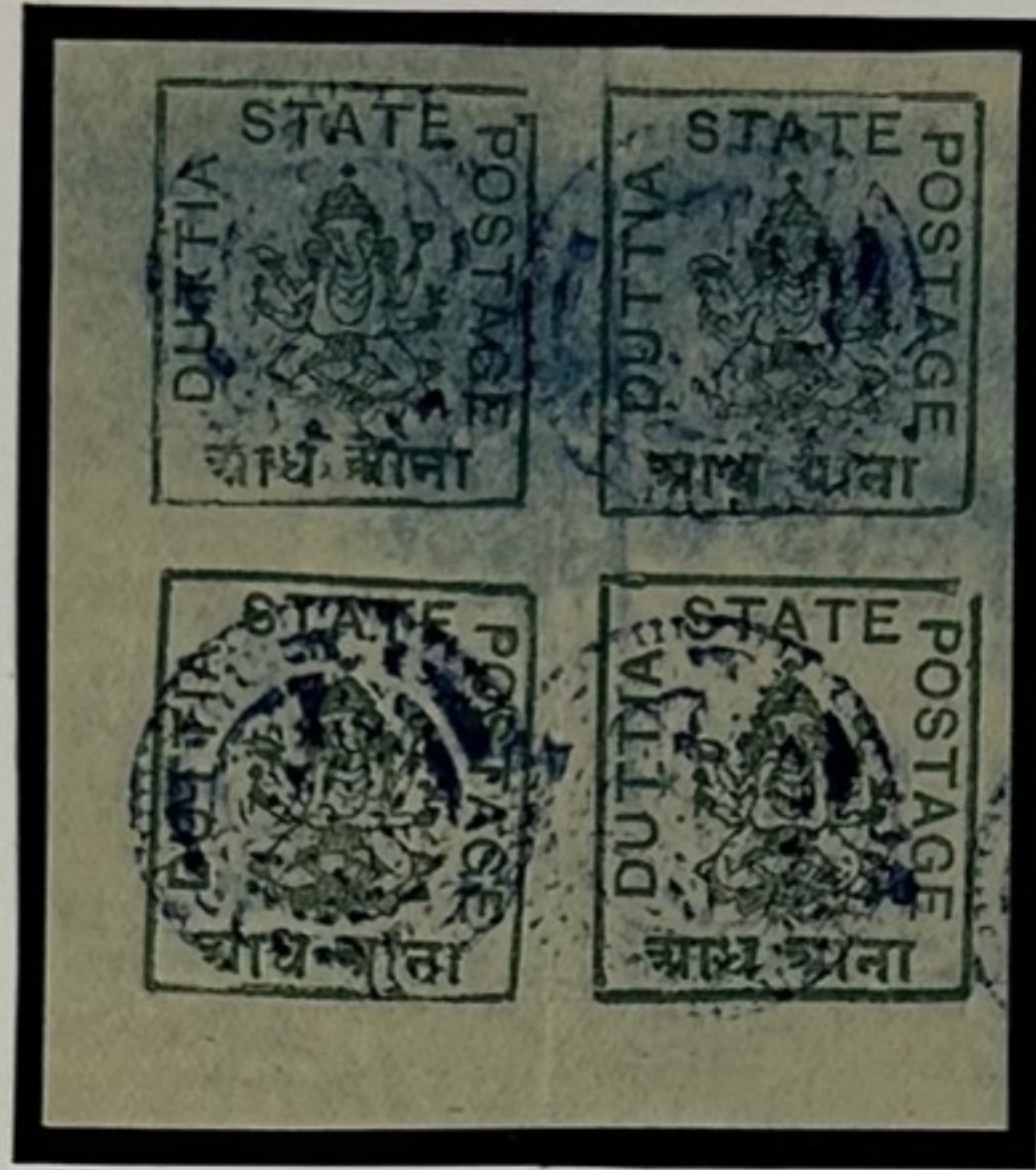
1916. - Colours changed. imperf.

1/4 anna



1/2 anna





1 anna



Tête-bêche pair

2 annas



4 annas

12661

5/2/21

1918. - Colours changed. Imperf.

1/2 anna



1 anna



Perf. 11,1/2

1/4 anna



1920.. - Rouletted.



Rouletted x perf 7

