

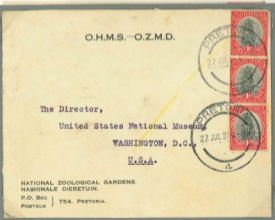
1. Typo

Pretoria Issue 1-3



Registered
To Mozambique
1d letter, 4d Reg-
istration.

Mozambique was
a member of the
SA Postal Union
So Domestic rates
24 January 1930



3d Foreign rate to US
27 July 1927

2. Rotogravure

Darmstadt Trials 1929

Vignettes

Still unhyphenated, but has a square toe 'R', **R**
as do all following.

In 1929, the Government Printing Office decided to print their own stamps by rotogravure. Trials were made in Darmstadt on a Goebel press which would turn gummed roll paper into finished stamp sheets.



Gummed paper, English ink
Perf 15:14



Watermark trefoil edge 4th column
German ink, Gummed, perf 15:14



Unperfected coated
Paper, Imperf
German Ink



Imperf, unperfected, no watermark.
Ink unperfected



Unperfected, perforated 15:14
"Before fine etching"
Unperfected ink



Paper is watermarked only last three images!

Darmstadt Trials



Ungummed paper,
Imperf, ink not specified.
Hard paper, would not absorb ink



Watermarked, gummed, perf
"Last proof after Mr. Teller rubbed down the
insides."
Background not clean.



Watermarked Trefoil, gummed, perf
"Last proof. Background clear. With
full pressure on the cylinder"



No WM, Ungummed, perf
Clean background

Frames

2. Roto

Darmstadt Trials

Complete stamp



Gummed Esparto paper,
English black ink
No WM, perf
"2 P Air" pressure



Gummed Esparto paper,
English black ink
No WM, perf
"3 P Air" Pressure



Gummed esparto paper
German inks



Esparto paper. German inks. Perforated, gummed, no watermark
Misplaced vignette.



Springbok WM, gummed, perf
English inks



Trefoil WM, gummed
"Final proof (approved Teller)"



Esparto paper, English
black, German Red.
"Final run"



Gummed Esparto paper
Worn frame. "End of run"

3. Roto 1

Roto Group I 1930

Master, Multi flaws

Group 1 Master flaw
White spot TR of Odd
Afrik stamps.

Group 1 Master flaw
White spot TR of Odd
Afrik stamps.



Issue 1-6 Multi flaws



Extended foot 'R' 4/10
3,4/10-12

Issue 1-6 General Flaws



Blurred ship
Over dilution of ink



Oblique line in
rays



Heavy sky,
white line on left



Missing sky shading



Vertical crease
Before printing



"New Moon"
Misregister



Black mark
Right of top mast 4/1

Red spot serif of
'1', 11/2



17/7-10.
Multi broken line under PO, 17/7
Issue 1. Break right frame 17/8

Issue 1, May 1930

3. Roto 1

Control
Varieties

Issue 1
distinguished by 'A'
or 'B'
After Sheet number

R1-6/11,12

White projection
'O' 3/12
Dot under left po
yard 5/12



Sheet #7667
B- Set 1
R16,17/11,12



Red mark over
'KA'



Red dot left of stern
R20/1



Red dot in 'F' Eng 20/11
White line 'KO' to frame 20/12



R4/1, red dot over 'A' English 4/1
Multi flaw gap in frame 3/2



3. Roto I

Issue 2, June 1930

'B', 'D', and 'E' letters were used in this run, but it was a single print as shown by identical positions of the sheet number, even though the letter changed.



Controls Variety

At the start of the run, the letter 'B' was re-used by mistake. But now the Upper pane English stamp has a broken mast. Corrected after very few sheets
Only Identifiable Piece on the sheet



Upper pane.
 D opposite English with "broken mast"



Lower Pane
 D opposite Afrikaans



Issue 2, upper pane
 'E' opposite English with "Broken Mast"



Black line under 'OU'
 6/1

3. Roto 1

Issue 2, June 1930

Cylinder accident
 Usa

R7-13/7-12.
 Two serious black doctor scratches
 Probable cause of scrapping of Issue 2 cylinders.

Multi flaws at 8/7, 8/10 9/8, 12/8.
 Horizontal red line through rays and into gutter 7/12
 -Iss 2



Issue 2 pair With control 'D', broken mast.

1st SA - England flight SA-Rhodesia

6d correct, as Rhodesia was a member of the SA Postal Union.

Very difficult to identify.
Marginalia and a few varieties.



'E' opposite English, without broken mast—Issue 3
Position of sheet # shows both same print.



Retouch left of stem
10/11



Leg of 'R' extended
to oval 4/10



Large red dot last 'A'
Africa 1/2d
Heavy scum, Rough
chrome



Tiny red dot outside left
frame at top. 16/11



Very difficult to identify. Only Marginal
information or a few specific varieties
work. Iss 4 & 4a identical except arrows.



'F' opposite English mast not
broken. Upper half



16, 17/1,2 Lower yard
extended to edge 16/1



'Imp' on mizzen yard
Afrik 17/9



Fine black
arrow—4a
R10,11/1,2

Light patch top
of shrouds and
retouching of sky
at left



Rugby ball
End mizzen main yard



R4,5/5,6
Large dot left
black doctor mark



R18,19/3,4
Black line from lower
yard to left



'F' opposite Afrikaans
Lower Half



Paper join.
Margin 13.5mm—Issue 4#



Large black blob on 'CA' English
3/2



Issue 5 was small and soon aborted.
Only identification a very few varieties.



- R1/1: Two tiny black dots in the middle
between first and second rays
R2/1: Black dot midway between stern
lantern and bottom Yardarm.



R19, 20/10-12
Black dot next to stern lantern 20/11

Again, a very short run. Identified by arrows, varieties, and color.
Later stamps called maroon just have a lot more ink. Both have a hue of 353-6.#



Red dot belly of 'd'
R18/12



Left arrow, Issue 6



Frame break under 'U'
of Revenue 20/5



Blurred Ship
'Maroon'/jet.



Red dot left of stem 8/3
curved lines in sky 8/3,4

Red blob at
2:30
4/11



Paper splice



Rugby ball left of yard
Multi flaw 15/8



Red slash 3rd ray 3/7

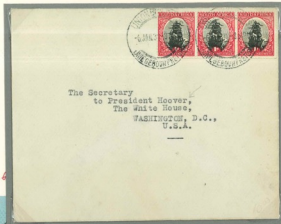


9 March 1932, Jet black/Maroon = Issue 6
1d under paid to Germany



Shows overlap of hyphen, but no design characteristic of Iss 8&9 =7
27 February, 1932.
SA Air to Northern Rhodesia same as domestic. 1d postage, 4d Air.

Foreign Mail 3d
6 January 1931
To President Hoover



Imperial rate 2d
SA-Scotland



Used as Revenue stamp
All financial documents had to have 1d revenue stamp.
31 July 1931



7. Screened

Multi Varieties
Blob over 'S'
1/12
Smoke trail 2/5

Iss 22&24
Varieties
Red mark in
leaves
10 o'clock 1/3

Issue 22 Nov. 1950

Mini-sheet



R1,2/1-12

Red mark in leaves 10 o'clock, 1/3 (Issues 22 & 24). Blob over 'S' of SUID 1/12. Smoke trail 2/5 (Milti), Blob on 2/6 TR leaves.



Dots in 'O' Posseel 10/9; dot on curve right curly 11/2



2 dots under 'L' 19/4; dot under 'OS' 19/2;

7. Screened

Issues 22&24 Sep-Nov 1950

Frame Varieties
Use

These issues shared same frame cylinder, so same varieties

Blob over 'SU'
1/12Smear under
'UT' 5/5Red dot in TR
scroll. 5/12Red dot under 'R'
Afrik 3/8Break in TR frame
13/8'Smoke Trail' 2/5 Multi
R1,2/4-7

NORWICH UNION
FIRE INSURANCE SOCIETY, LIMITED.

O. F. S. Head Office for South Africa:
UNION CORPORATION BUILDING, 74-78, Marshall Street, Johannesburg.
P.O. Box 128. Telegraphic Ad.: "NORWICH." Telephone No. 33-0111.

FIRE DEPT. THEUNISSEN O.F.S. RENEWAL RECEIPT

AP/EDW AGENCY INSURANCE AND INVESTMENTS.

Policy No.	Name of Assured	Sum Insured	Premium and Stamp Duty	Renewed	
				From	To
10723782.	B. Ichikovich & Bertha Mandelzweig (Born Gordon) THEUNISSEN, Orange Free State.	£ 2,300.	3.16. 8. 1.11.	1.11.50.	1.11.51.
			3.18. 7.		

On PROPERTY AS DESCRIBED ON THE FACE OF THE POLICY - SITUATE 355, SECOND AVENUE, THEUNISSEN, ORANGE FREE STATE.

Received the sum stated hereon being the Premium and Stamp Duty for the renewal of this Policy.

For JOSEPH LIDDLE (PTY) LTD
MANAGER FOR SOUTH AFRICA.

Al reaction

28 November 1950. Date proves Issue 22
23d Stamp Duty of 2.5% of Premium. Revenues show secret mark "50"

Issue 23, Nov 1950

Varieties

7. Screened

Only the frame cylinder 88 is unique.

So Cylinder Nos and arrows (on Frame Cylinder No 88) are identifiers.



Left Arrow



Right Arrow

Top arrow = Issue 23
Line up from end of pennant,
1/6Bottom arrow.
Line from mizzen yard up
19/6Smudged bottom right
leaves

Red sheet number



Dot on curve of curly(Multi)-11/2 ; Red line in middle Right Margin 11/. Black dot right margin opposite pinnace 10/8. Down slanting line upper Mizzen yard 10/8. Tiny dot at 11 o'clock edge 11/9. Dot above pennant 11/8. Dot end of Mizzen yard 10/10. Dotted line into right margin 11/8. Large dot over mountain 11/6. Dot left of stem lantern 11/11. Dot edge of oval 9 o'clock. 10/2.

Side arrows =Issue 23, as the frame cylinder 88 is unique to this issue.

Only 1 unique frame flaw at 11/8, Dotted line up from 3rd leaf into gutter proves Issue 23



2 dots over 'E' of Inkomste 20/3. Faint dotted line from 11 o'clock to top mizzen yard 19/6. Line dangling mizzen yard 19/6.

Vignette flaws Issue 23&24
Many tiny black spots in the vignette,
none very prominent.

7. Screened

Neither frame nor vignette is unique. Very difficult.
Need blocks that have both a frame flaw and a ship flaw.
Cylinder #'s also proof.

Frame

1/3. Blob in upper leaves
at left opposite mizzen
top yard.
1/11. Red dot in left
gutter midway.

Ship

1/6. Curved dotted line from
'R' to pennant.
1/10. Dot edge opposite
pennant tip.



Frame

10/9 Dots in 'O' Posseel

Ship

11/8. Dot over pennant.
10/10. Dot in rays opposite
lower pennant.
11/6. Dot over mountain.
10/2. Dot edge opposite stern
lantern.



Frame

19/4. 2 dots under 'L' of
Posseel.
19/2. Dot under 'O'
. Posseel

Ship

19/6. line dangling from
mizzen mid yard.
19/6. Faint dotted line from
edge down to mizzen mid
yard.



8. Hard horizon

Issue 25, Feb 1951

Controls, cover

Redrawn with hard horizon and even wider gutters. Issues 25,6,7.

Mini-sheet



Invert 'U' right of topmast
1/1



Lighter sky at top left. 1/10



Left Arrow



Right Arrow



Cylinder + sheet #

Top
arrow R1/1
Black 'U'
over pennant
Issue 25

R2/3, Major
red blob be-
tween R2/2
and R2/3 is a
multipositive
flaw.



RELEASED
BUREAU OF
Entomology and Plant Quarantine
U.S. DEPT. OF AGRICULTURE
NEW YORK, N.Y.

PASSED FOR
OF DIVISION
U.S. CUSTOMS
AT OMAHA, NEB.

Miss M. White,
1950, South 2nd St.
Lincoln 2,
Nebraska,
U.S.A.

WESTBTON

G.S. 122

U.S.A.



6925

36

8. Hard horizon



R14,15/1,2
Frame break over 'U' 15/1



Red dot 3rd sun ray
20/12



Break in bottom left
frame 4/7



Break in left frame
20/3



Black dot 11 o'clock
Afrikaans 5/10



Frame break under 'T'
In 'Postage' 8/12



Red smudge over mountain
16/11

Issue 26, Jan 1953

Varieties
Full sheet strips



R1,2/1-12

Top arrow proves Issue 26
Red line from lower left leave to oval 2/3. Multi positive flaw



R10,11/1-12

The two arrows prove Issue 26
No varieties

8. Hard horizon

Issue 26 has a unique frame cylinder, so controls and frame varieties are unique.
Different placements of the sheet numbers shown below prove 3 separate printings.



Sheet # opposite
Row 18
Middle of margin



No sheet # in bot-
tom 5 rows.



Sheet # Opposite Row 17
Close to stamps

8. Hard horizon



No variety on 19/2 so not set 25



R20/12
Red dot end of 1st ray.



8. Hard horizon

Issue 27, April 1954

Arrows
Cylinder Nos.

Only the frame cylinder is unique to this Issue, so arrows and frame flaws identify, but only 4 tiny flaws listed. Final ship.



White flaw joins 'R'
and oval 5/9

This red flaw 'K'
15/12



Sky not pale = Issue 27

8. Hard horizon

October 14, 1954

Mixed Franking

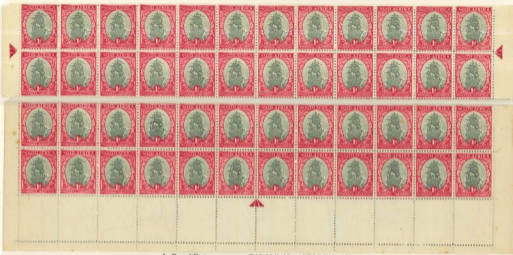
On October 14, 1954 A new definitive series of postage stamps was introduced, the "Animal" Series. Leading to "mixed" frankings of mail, both civil and official. The ship series was not demonetized.



Mixed Franking 1 September 57
15 1d stamps = 1/3d. + A 1shilling Animal (Kudu) = 2/3d Correct rate
Not enough room for 12 more ship stamps.
The 1d Official was on Issue 26 of the ship

From Department of Education, Arts and Science At Pietermaritzburg, Natal

6. Wider gutter



L, R and Bottom arrows. R10,11/1-12 and R19,20/1-12
Red break in 'I' Afrikaans R11/3



Gray/pink

Grayrose

Jet/carmine

Deceptive named colors.
All the same color ink.
Light to heavy inked print.



Red dot left gutter
17/7



Red dot in mainsail
and Left Stay 8/2



Dot end of Pennant
18/4



Frame break over 'T' of
South NL

9 September 1943
Airmail from
my mother to my sister

Rate 1/3d
Overfranked 1d



Vertical red lines left of
ship on both. 9/3,4



Vertical red line, 'O' of
Inkomste to top
R9/3, R stamp



"Lazy V" at bottom
yard Afrikaans



Red dot under 'F' English

11,12/3,4
Red break center if 'T'
11/3



R1,2; 9,10; 19,2
All 4 arrows

Smoke trail from Pennant, 2/5. Multi
White line from wreath to frame at right 1/6



No varieties
Right arrow truncated

Much lighter sky at top, 20/2



Issue 18, March 1948

6. Wider gutter

Varieties

This short issue in March 1948, 1 month after Issue 17, is called "Sunrise Issue" for the relatively high contrast between the ship and the sky.
With only 2 varieties in literature, very difficult.
Contrast and dates are main ID.



Dot end of pennant
Afrikaans
19/4



"Loose rope"
Up from bottom left yard
2/7=Issue 18



27/48
Not Sunset
so Issue 18



Red dot in 'I'
Of Africa
NL



Hi contrast = Issue 18



6. Wider gutter

Issue 19 April 1948

Cover, varieties

Issue 19, a small print just 1 month after Issue 18 and 1 month before Issue 20. Used for Official Set 22.



Bottom Arrow,
R19,20/6,7



Right Arrow
R10,11/11,12



R19,20/3,4
Red dots below 'H' and by
stern lantern, R20/4



R12,13/3,4
Retouched sky 12/4



Large white break
in Mainsail 19/12



Red dot below stern
Lantern R4/12



Official Set 22=Issue 19
"Smoke Trail" Right stamp. R2/4,5

R Margin clean,
14mm=Official Set 22
=Issue 19
4½d Surface mail
to Europe



6. Wider gutter

Issue 20 May 1948

Mini-Sheet
Varieties Use

Only issue 9 across. Old paper.
Many stamps had the sky retouched.



Retouch Row 10.
#2, 4, 5, 6, 8.



"Seagull" TR stamp
R6/7



R4,5/1,2
Dot directly off bottom yard. R4/1
Dot over pennant tip. R5/1



R12,13/8,9
Crooked black line across 3 rays
R12/9



Red dot over 'R' of
Afrika 19/8

Retouches



Heavily retouched sky
Top right
29 locations
Only in even rows!
5 Seen in Row 10
of the mini-sheet.



*Mr. O. J. Thomson,
Products - Automotive Electrical,
Borg - Warner International Corporation,
310 South Michigan Avenue,
Chicago 4,
Illinois.
H. S. A.*

Black line vignette @ 9o'clock
Middle stamp, 4/7
27 May 1948 SA to US 3d rate

6. Wider gutter

Issue 21 July 1950

Mini-sheet
Usage

The first issue to show cylinder numbers.
Many prints, shades, varieties



Cylinder No. 6 A

Cylinder No. 6 B



6. Wider gutter

Issue 21 July 1950

Varieties

Long lived issue, many varieties.



Line joining yards R1/1
Red line rt gutter 3/1



Mast extended to edge
English 6/6



Dot in 'I' English 7/1
Red vertical line in
Main topsail 7/2



Curved scratch
Left sky to stern 3/1



Slanting black line
through Pennant 9/1



R9,10/1-4. Large red dot left margin 9/3
Red line between stamps, 9/1-10/1 and 9/2-10/2



Red dot high left
margin 5/3



"Seagull" TL sky
5/11



Large red dot left margin
9/3,4

6. Wider gutter

Issue 21 July 1948

Varieties



Dot over 'A'
English 18/9

Dot over 'A'
Afrik 11/6

Dot on 'F'
12/9



Red line down
into sky TL 15/2

R15,16/3,4
St. Elmo's fire 15/4
Late heavy retouch
ship's bow
16/4



"Blob" in sun rays on R17/8 appears in later printings.

Starts small as a "high diver" on the left stamp to the large balloon on right.



Flying rope up from
left lower yard 18/1
Another mysterious scratch



Red mark between
TL yards 17/5



R19,20/6-8
'Flamingos in sunray' 19/8
Bottom arrow



Red dot in TL gutter
19/3

6. Wider gutter

Issue 21 July 1948

Mini-Sheet

A long life, many printings and shades of a rosy carmine. Only unscreened issue to have cylinder numbers.



7. Screened

Issues 22-24, 1950

Cylinder blocks

In 1950 it was decided to switch to the more normally screened cylinders, but the transition was not painless. These 3 are only ones screened, with soft horizon. Difficult to identify, as generally need 2 flaws to ID an Issue, except for Cylinder blocks. All flaws of Issue 24 show on previous issues!



Issue 22
1st print, Vignette cylinder 76
unsatisfactory



Issue 23
2nd print, Frame cylinder 88
unsatisfactory



Issue 24
Final print
Frame 14, Vignette 70

7. Screened

Issue 22 November 1950

Controls

Issue 22 is difficult, it shares the frame cylinder with Set 24, and its unique vignette cylinder 76 has no flaws. Only marginalia help. Used only for Official Set 25, which helps.



Cylinder Nos 14/76



Arrow
R. Margin 14.5mm=Issue 22



Top Arrow =
Official Set 25
=Issue 22



R1-3/1,2
Broken C in English on 3/2
=Official Set 25= Issue 22.



Bottom Arrow =
Official Set 25
=Issue 22



R19,20/1,2
Dot under 1st 'E' 19/2
= Official Set 25=Issue 22.

London print, right pane: Perf right, imperf left = London. No break in jubilee under R20/12.
 Note following left hand margins have from 1 to 11 perfs. This indicates printing order #.

To start, they only pulled out 3 perforating pins to leave an 'imperf' margin. Continuing, they pulled out more then more until only 1 perf shows.



R1,2/1-12
 No varieties

R10,11/1-12
 No Varieties



→ R19,20/1-12
 Only flaw showing is Breaks in Frame line
 Above 'H' and 'AF' R19/7

THAFR

1. Typo

London Issue 1926

*Upright W/M
Controls, Varieties*



Early print, does not show
'C' for 'O' in Postage



Break in frame
over 'H AF' at 19/7



No break in black Jubilee line
under 20/12=London plate



10 perfs



London Issue 1926

*Inverted WM
Varieties*

1. Typo

The inverted WM was only a small portion of the London Issue.



Imperf left,
Perf right
=London Printing
2 edge perfs



8 edge perfs



Varieties



'C' for 'O' in Postage 1/1
Up WM.
Later prints only show this.



Broken 'M' Inkomste
17/12, Invert WM



Misper-Bent corner
Upright WM



1½d World Post card rate
to US
10 April, 1926



2d Empire rate
4d for Air from Pretoria to
Capetown for fastest passage
to UK
28 August, 1928



Foreign mail 3d
To USA
13 June, 1927

1. Typo

Pretoria Issue 2, 1928

Controls, Cracks,
Varieties

These plates were poorly made and shows many cracks. Short life.



R1,2/1-12, Early print. Show none of the 5 varieties that developed. Jubilee line gaps 1mm red, 3mm black = Issue 2.



R2/12

Final plate break-up
Part of value circle #



Cracked through ship edge.
"Thunderbolt"
R16/8



Cracked Frame
Oblique crack
A/F R1/7
Early



R1/7 crack final state



R11/1-3 Crack through ship. R11/2



Issue 2, 2 cuts
Faint registration mark



Long red line,
Short black line = Iss 2

"New Moon"



Spoon shaped mark in upper
black Jubilee line=Iss 2



Double perf



Large black mark in sail R1/12

1. Typo

Pretoria Issue 3, 1929

Jubilee lines

ID by the Jubilee lines



Left black line split 1/1

Red line continuous
over 6 & 7

Full Jubilee lines

Lower black line 2 flaws
No full left arrow previously
reported #Upper red line notched.
White flaw at stern R11/11

Left black line split

Continuous red line
6-7

Issue 3, 3 cuts

1. Typo

Pretoria Issue 3, 1929

Varieties

Only 3 handbook identified varieties in this issue, but also some
transients.'Calabash' crack
R12/5"Starboard Light" on stern
R15/9Issue 3, 3 cuts
The alignment mark between 20/11 and 12
from the London plate has now disappeared

Paper join

1. Typo

Pretoria Issue 1-3

White Blobs

Pretoria issues were plagued with white blobs. Probably an aged, deteriorating rubber inking roller.



White on
2nd Pennant



White at 10 o'clock
20/1



White on
left stern lantern



White above top pennant
Afrikaans stamp



White leaf
Top right



White leaf
Top left



White on
Right scroll



White on
3rd Yard, left



White on Flag



White
Under flag



White blob in Sunrays, 4 different positions.

1. Typo

Pretoria Issue 2-3

Minor flaws

Pretoria issues 2 and 3 had many minor flaws



Light shade on right of stamp
Dark shading on left



White line under left
scroll English stamp



Spread in vignette inking
Light to dark



Broken frame lines
Over 'H' and under 'SO'



Break in frame over 'R'
20/8, Multi flaw.



White line diagonal bottom
left corner Name frame
Afrikaans stamp



Red dot top of '1'



Red line mast top to
oval



Extra perfs at bottom
Perfin?



Broken rope over left
stern lantern





11th row flaw. Red dot in sea by boats
English 2/3, Afrik 13/3



11th row flaw St Elmo's Fire end lower pennant
English 6/3, Afrikaans, 17/3



Red dot L of 3rd yard
5/1



Red line in rays
Blk dot at 4 o'clock 6/3



Red line on 'D' 7/11



Heavy red line BR edge
10/2



Arrowhead at 9 o'clock
19/10



Red slash through 'KA' 12/8
Without red dot in gutter below '1'



Large dot margin under 20c
Extra rope 2nd left yard



The Librarian.

August 1934

1d newspaper rate to US

"Umteteli wa Bantu" "Follower of the Bantu People"
Zulu/Xhosa newspaper.

Two small Printings, the first in gray-black with inverted WM,
the second in steel blue with upright WM.
ID by varieties, color, arrows, date.



Gray-black WM invert
Large black smudge 2 o'clock.
Afrik 1/11
4 April 34=1st print.



Left Arrow, 1st print



Red dot in 'O' &
Line bottom of 'U'
-Set 9, Steel blue



Black dot in sky 11
o'clock. 13/3



Black spot left end top
yard. 10/4
WM up, Steel blue



Black Dot edge of oval at 3
o'clock 11/1 WM up



Steel blue vignette and date 31 Dec 1934 = Issue 9
3d domestic airmail, Cape Town to Port Elizabeth

Design Characteristics, 1st 5 issues (10-14)

In 1934 a new model, introduced a hyphen in the word **SUID-AFRIKA**, but retained the vignette cylinder from issue 9. Five issues in this group, the first two from the same multi-positive.



English stamps in even numbered rows
Show a "pimple" at 11 o'clock on the 'O'
of south.



English stamps in even numbered rows.
A second flaw appeared in Issue 14
Dent in frame line over 'T' of South.
Also shows pimple.

Issue 10 best identified by varieties, arrows, dates.
Only 10 and 11 have inverted WMs.



Red line under 'RI'
3/8



Red Comet
Invert 8/1
Rare (bc)



Red line in frame
Top right 18/9



Red line from bottom
yard to top oval 8/1



Albatros (early)
and Speared Albatross' (late)
R13/3 =Iss 10



R5,6/9,10
Var "comma" bad on tip of
left leaf 6/10=Iss 10



22 Nov 1935 =Issue 10
Smoke trail down, TR stamp

Paper join



Red line from value into hull
R14/11

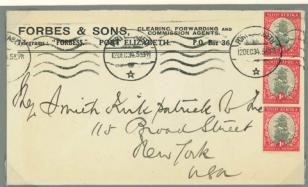


10 Dec 1934=Issue 10
Spot on 1st ray SW 12/7=mu

Variety, cover

R12-15/2-4
"Speared Albatross"
13/3, middle 2nd row

13 March 1935



12 December 1934, hyphenated = Issue 10
"Albatross" flaw top stamp
3d to USA

"Smith, Kirkpatrick Inc" were agents for SA before, during and after the war.

Issue 11 best identified by varieties, arrows.
All colors are similar. Inv WM.

Imperf Top Arrow
Proves imperfs are Issue 11.



Top Arrow



Right Arrow



Left Arrow



Bottom Arrow

1 January 1936
Date = Issue 11

1d under paid=2d
fine=4c US



5. Hyphenated

Issue 11, 1935

Varieties

Issue 11 best identified by varieties, arrows.
All colors are similar. Inv WM.



Line up from left yard 1/1
Red dot at 8 o'clock 1/2

"1" for "I" in Suid. R17/11 = Issue 11.

Different placement of sheet #s. Scratch shows Right to be late print.

R8,9/1,2
Spot L of yard
9/1=Issue 10 or 11
But no red line bot-
tom yard.
Thus Issue 11
WM UP=Rare(HC)



White mark under
'FR' R15/1



Heavy black mark under
'KA' R20/8



Large red dot on
hull. R5/5



Black smudge at edge of oval
at 1 o'clock. R2/1



Two cuts top
frame. R15/11

5. Hyphenated

Issue 12, November 1936

Control, Varieties
Cover

Issue 12 also best identified by varieties, arrows.
All colors are similar. WM Upright.



R6-9/1,2
"Phantom Ship" R8/1
Left half faint



Left arrow=Issue 12



Right Arrow Iss 12
Official OP



R15,16/3,4
Two white lines from Doctor dig-in
across frame and vignette, lower pair.
R16/3,4



R11,12/10,11
Black line vignettes of both
left stamps



White line through
rigging under
mainsail. R17/7

13 March 1937
Tristan da Cunha to
SA
Carried by SA Navy
supply ship, landing at
the Simonstown Naval
base.



5. Hyphenated

Issue 13, April 1938

Arrow
Varieties, Cover

Issue 13 also best identified by varieties, arrows.
All colors are similar. WM all Upright.



Top Arrow Iss 13



Bottom row Issue 13
3 heavy lines above pen-
nant tip 20/7



R19,20/3,4
Black line Pinnacle up to oval.
R20/4 = Iss 13



White streak from pennant to frame, 9/11
Not listed in H/C, but above 5 examples prove constant. #



Large whitish blob on hull. 2/12
More visible on heavily inked prints



Line Mizzen
yard to oval 1/4



Dot over Pennant
R13/8



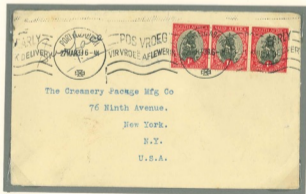
Line pennant
tip to oval 20/4



Smeared leaves top right
& Red dot sunrays
R3/2



Black line right side of oval
20/4
R17-20/2-4



The Creamery Package Mfg Co
76 Ninth Avenue.
New York.
N.Y.
U.S.A.

27 march 1939
Too early for Issue 14=Issue 13
Too late for Issue 12

5. Hyphenated

Issue 14, March 1939

Arrow, Varieties
UsageIssue 14 also best identified
by varieties, arrows.

R6/1-4

Smoke trail upper right R6/4

Missing rope
R11/3Thick red blob, BL of left
stamp. R2/2,3Dot in rays over Mountain
Left, 14/9,10RWhite line
TR frame R9/9

R12-16/6-9

3 dots in 2nd ray 13/730 July 1940
Dog license
Revenue use.
1d on every fiscal
paper.

BOEK NO 2. No 368

VICTORIA WES AFDELINGSRAAD.

HONDELISENSIE.

'n Lisensie word hiermee toegestaan aan Stambler van 2079 Afdelingsraad

Distrik No _____ in die Afdeling Victoria Wes, om **EEN HOND** vir die jaar

Een Duizend Negenhonderd en veertig (19340) aan te hou, waar-
voor hy vandag die som van **EEN POND STERLING** betaal het.

Bespreking van hond _____

Uitgereik op Victoria Wes Afdeling Victoria Wes,

2079 19340 J. G. Hendon Invoerderaar.

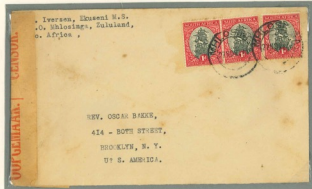
5. Hyphenated

Issue 14, March 1939

Varieties

Issue 14 also best identified
by varieties, arrows.Extended mast
1/1

R9,10/9,10

Red mark Flag R10/9, Red line over Pennant
R10/10, Blk line L side oval R9,10/110White line joins 'D' to frame
19/7Broken middle yard
and rope 11/3 late3 dark lines at
1 o'clock 20/7Red Blob under 'O'
of South. 18/6Black dot in sky
over stern lantern
20/1220 November
1940
War CensorThin over 'T'
EnglishBreak under 'L'
Of Posseel.
= Issue 14

Quad negativeHyphen begins
Bulged 'O' begins

D/A



O

Common VarietiesLight shading
around shipRed dot end of bottom
yard 2/4Deformed frame over
'FR' Afrika

Steel blue vignette

Broken oval 10
o'clock
Top leg 'K' brokenRed line & frame
break top left
frame 3/8Deformed frame under
'U'

The new design had been shrunk slightly to give a 2mm perforation gutter instead of 1.5mm. Includes Issues 15, 17-21. Issue 15 is very smudgy. First stamp Afrikaans

'Stab' mark 'FR'
English R1/2
Early state, no extended mast
Afrikaans 1/1Intermediate. Stab + beginning of
frame breakdown over 'TH' and 'R'
No extended mastLast state. Long stab +
Frame badly
broken over name R1/2,
Line up from mast, R1/1
Has developed during print. #4d Registration
indiciaDot end of 2nd Yard, R10/7 = Set 15.
2nd on a 4d Registered Envelope, domestic=OK

9. COILS

1926 COILS

Typo,
London, Pretoria

These coil stamps were made up by guillotining the sheets and pasting the strips. So a curly toe and guillotined edge identifies as R-6 (London) or R-8 (Pretoria). The stamps are almost identical, only sealing strips differ and print quality.

Waterlow & Sons
Limited,
Contractors,
London, Newcastle
and Wulfford.

500 1d. STAMPS.
DELIVERY TOP END FIRST.

London
Coil #6 end seal

"Waterlow & Sons"

500 stamps

Government
Printing Office,
Pretoria.

Pretoria
Coil #8 end seal

Government
Printing Pretoria
1,200 stamps

1,200 1d. STAMPS.
DELIVERY TOP END FIRST.

Pretoria coil, strip
of 8, folded.

Vertical edges
prove coils
showing
straight cut perfs



Pretoria 1927 coil #8 strip of 6.

Coil join-Best way to identify. Also straight edges.

1931 FFC Kimberley to Windhoek, South West Afrika.

Differentiating London vs Pretoria Coils

The literature says there is no way of differentiating the London coil from the Pretoria coil on the typo stamps.. This assumes that the plate sent to Pretoria was the one used in London
 However my studies show that **the plate sent to Pretoria was a new plate.**

The new plate contains a mark on almost EVERY vignette, which is absent from all London prints of the 1d.
 Can only happen if it is on the die used for the plate.

There is also a minor black dot to the right of the middle spar on the 1st Pretoria print. It does not come through on the copy plates made in Pretoria.



London from
coil



Pretoria from
test print



Pretoria from 1st
print control
BR with no cuts



In the London prints, the lines forming the 'Y' do not actually join, but on the Pretoria prints they do join, creating a dark spot which is clearly visible.

The much better quality of the London prints is also clear.

9. Coils

1930 Roto Coil 10

Mis-cut on cover

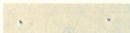
1st rotogravure coil derived from Issues 1-6.
No curly toe.



Strip 10, 9-11
Red mark in
'O' of Postage=Coil 10.
Strip 10, Row 11



Paper creases
=Coil 10, Strip 1.



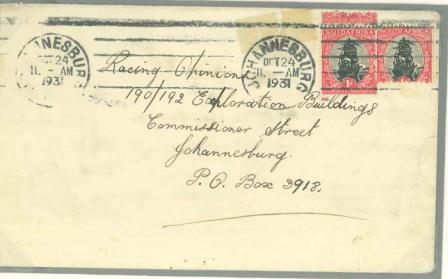
Pinholes from vending
machine feeder=coil.top

Strip 3, 18-2
Coil 10.
Wider gutter with line
between Rows 20-21.
Rows 21/22 are inserted
Rows 3&4 to fill
cylinder.



Miscut=Coil
Unhyphenated
Roto
October 21 31
From Issues 1-6

=1930 Coil 10, as next
coil not issued until
November.



Roto coils with flat foot

Extremely difficult to identify.
White blotches

White blotched
Doctor scrape=Coil 11
Inserted rows 9 & 10 at 20,21.
Wider gutter between 21-22.

Poorly slit edges, not guillotined.



Miscut
Coil 10 or 11



Miscut Coil
Date illegible.

The coil is bluer than the 'rosine' which corresponds with 'Carmine', which is evidence R-11 of 1931

The 1d is the "jet black and maroon" overinked print of Issue 6



9. Coils

1935 Coil 15

Added rows,
Gutter Cover

This 1935 coil R-15 Has **perf 13.5x14**, not 14.5x14, as all other coils.
Leftover sheets were sold over the counter. Small gutter between strip 6 and 7.

Added Coil Rows 20-22

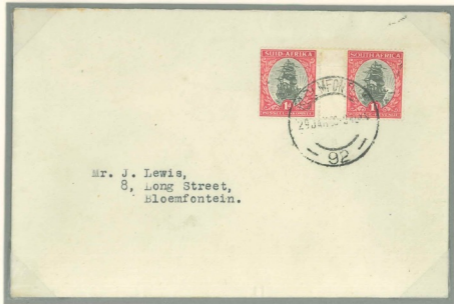
Added rows 21 and 22.
R20 vignette normal
Added R21 vignette Dark
Added R22 light.
WM upright.



Gutter block of 8, R9,10/5-8. Inv WM
Broken perf pin in gutter.

Gutter pair
29 January 36

From coil sheets



Coil 19 of 1937 is hyphenated and had the larger stamp with a narrow 1.5mm perf gutter



Coil 20 of 1940 had a smaller stamp and a 2mm perf gutter. ID is hyphenated only 18mm wide, unscreened. Rows 21 and 22 added, with Row 22 displaced a bit left. Balance of Coil 20 sold as sheets



Rows 21, 22
22 to left



Rows 22/23,
22 to left



Black 'Hook' top right
of oval Row 13/12



Block of 16
Sheet # 95218
5 digit black, from newer press.

The monocolour red 1d coils were introduced in 1943.

This first issue is "coarsely screened" cylinder 16, and has wide gutters, 2mm. Rows 3&4 were used to add Rows 21 and 22 to fill the cylinder, and have only a 1.5mm gutter between these two.

Folded full strip of 22.
Showing is R18-24
R21 & 22 have
1.5mm
gutter,
Not 2mm

Mutilated
in vending
Machine.
1947

R19-21/3
Big white blotch 19/3
White blotch BL 21/3

R17-20/9
White spot with dots
BL corner 19/9

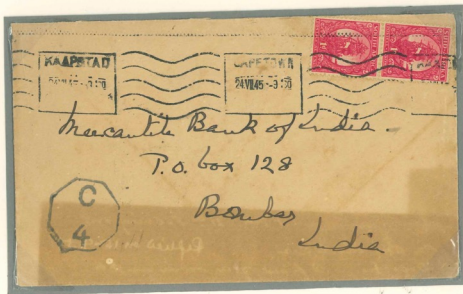
Line small boat
to lantern
R22&4

21

22

Coil 24 by date
24 July 1945

2d Imperial surface.



The 1949 issue printed with **cylinder 24**, is similar to the 1943 issue, except the perforation gutters are narrower, 1.5mm as the stamps are now 18.25mm instead of 18mm. The screening also seems finer. Identical with the next and final

506 1d. STAMPS.
DELIVERY TOP END FIRST.
Value £2. 2s. 2d.



Birds
around
pennant
21/8

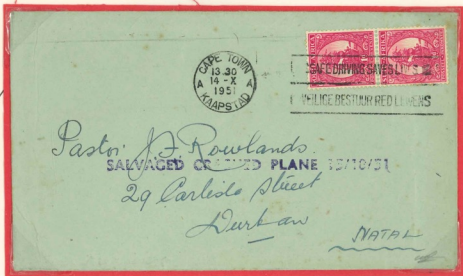


Large white blob on
stern castle
R6/12
=Cyl 24
=1949 coil
R3-6/12

Coil Sealing tape
25 October 1950 = 1949 Coil
Pencil R59/12

The last right 12th column.
1st 3 stamps unprinted edge.
NL.

"Blazing Sun"
Loss of definition of
sun rays



14 October 1951, 1.5mm gutter = Cylinder 24.

"SALVAGED CRASHED PLANE 15/10/51"

SAA DC-3 crashed 15/10/51 en route Port Elizabeth to Durban

Crew and passengers all perished

24 covers survived, few with 1d coil franking.

The 1953 coil is printed from a new cylinder, # 97, but same negative so identical to the 1949 coil except a few varieties

Roll End Seal

Probably 1953 coil

Folded full strip of 22
Line across sunrays
14/11.



Folded full strip of 22.
Stamp 22 offset to
right of stamp 1.
=1953 issue



Large dot foot of
5th ray 8/3



Government:
Pig. and Stamp
Office,
Pretoria.

506 Id. STAMPS.
DELIVERY TOP END FIRST.
Value £2. 2s. 2d.

London 1926

Booklet, Panes Usage

10. Booklet

Booklets were made from special plates of 22 rows instead of 20. Curly toe R.

Plate layout for the typo booklets.

m	1	2	3	ε	2	1	m	m	1	2	3	ε	2	1	m
---	---	---	---	---	---	---	---	---	---	---	---	---	---	---	---



Booklet covers+all advertising interleaving. No panes.
Black thread=London



Outer margin of sheet. Jubilee lines
Invert WM



Interior margin.
1 red Jubilee line + bars
Invert WM



Outer margin of sheet. Jubilee lines
Upright WM

10. Booklet

London Issue, 1926

Panes
Usage

Two types of booklets, one with ads on the interleafing, and one blank.
Identical stamps.



Full pane. WM Up. Miscut
Shows tete-beche portion at right



Contained two ½d and four 1d panes.
This booklet has ads on the interleafing .



The second type had no ads
Inside interleafing
Blank Glassine

22 Jun 1927
Perf 14.5x14
=London issue
2d Empire rate



10. Booklet

Pretoria Issue, 1927

Panes
Usage

The Pretoria booklet #7 was perforated 13.5:14 with a line perforator making ID easy.
Printed with gutter with "Jubilee" type lines in the gutter.



Red Jubilee line with bars. WM up. Mint
Left margin of right pane



Full pane, WM inverted



25 March 1930
Perf 13.5x14
=Pretoria 1927
3d to USA

Roto 1930

Varieties
Usage

10. Booklet

1930 Booklets B-8&9.
Identical stamps. Only unhyphenated Roto booklets



Joined paper
white blob under top yard
17/9



"Dragon" in sail
17/9



Creases, left column



Extra peak 17/3
17, 18/2-4



4 July 1934
12 booklet stamps= 1/-
Air to London and on to Berlin

Coil 1934

This is the **only coil hand torn** from sheets.
ID is damage by vending machine and
irregular side perforations.

The rarest of the coils.



Irregular side perfs
Coarse side lines = Issues 8,9
Miscut coil = 1934 coil #12

Unused coil rolls cut into 20 roll
sheets and sold at POs.

Identified only by a red 'Cross' in left
margin between row 18 & 19.

Black dot between 2nd and 3rd rays 16/4

Black line right of small boat. 16/6

Red dot rt of Mainsail 17/4

Black mark in sea left of hull 17/8 Black dot below 3rs yardarm 17/9

Red dot between 2nd and 3rd yardarm 18/1

Black mark hanging from middle yardarm 18/4

Break in Oval frame at TR 19/11



Rows 15-19, Strips 1-12

Red 'cross' in Left margin between Rows 18&19 proves sheet form of Coil 12

IN DIENS VAN SY MAJESTEIT.
ON HIS MAJESTY'S SERVICE.



Dr J. G. Harg
507 Nashville ave
New Orleans La
U.S.A.

On Left

Set 16/76 1d
23 Mar 42
Jo, burg-D.C.

Note large variation in
vignette darkness.

On Right

Set 16/77 1½d
27/II/41

Pretoria-D.C.
Dept of the Interior
handstamp.

No overprint varieties reported. But at least one shown here three times. One on next page



Black dot TL of 'U' Right stamp.

Iss 14, R14/4

Discovery



R 14-17/1-6

14/4, dot TL 'U' **Discovery**

KUT

1941

1st print

Other Uses

1st print
Issue 14
divided half sheet

Hidden is new
mark 'Dot TL of
'U', 14/4

Auditors red
ink 3 times per
half sheet right
margin

1st row flaw
developing black
in the bottom left
of 18/12 and
middle of 15/12
and high in 11/12

3/7 3 dots in
rays
9/6 Red blob
under 'O'
3/7 White line
up from 'D'



5 7 0 8



Post war type. SWA 8 pt type
Up rated 6d for Air to Germany, American Zone
10 April, 1948



The only SWA OP Envelope
Used the new indicia



9 November 1933 upgraded 1d PC to Germany. Bi-colored indicium.

S.W.A. very small, with stops. Missung stop after A.

"Here the German Bund has adopted the Fuehrer Prinzip"



SWA in 12 pt type

1935 OP Post card type, blank back
Indicia mono-color, bi-lingual. OP two sizes

1926 OP on 1st postal
stamp OP



1926 Issue
On Pretoria typo

May 1929
OP Horizontal +SWA
On SA Pretoria issue



1927 Issue on typo
Broken top 'A'

August 1929
OP Vertical +SWA
On SA Pretoria Issue 3



Full frame set-off



OP Vertical,
R9,10/11,12
Break in Red Jubilee 10/12=
Base stamp is Pretoria Issue 3



Bent T English
TL stamp NL#



14. South West Africa

South West Africa

S.W.A. On Roto stamps

Issues, Varieties

Forme used on 4 Base Issues



Issue 2, 1930 R11/5,6
Black mark in left sea 11/5.



Issue 4
Misplaced OP
F at Afrik=
Lower pane Issue 4



Issue 1 or 3, 1930 R 11,12/1,2
White 'dolfin in mainsail. 11/1
Red dot in '1', 11/2



Issue 7 1931
Bottom Arrow



Extra peak,
17/3
17,18/3,4



Low print
White blobs left side
vignette, TR stamp



R19,20/9,10
Large black blob in rays, 20/9

14. Southwest Africa

South West Africa

OP on London stamps

1926 Pretoria OP
On London typo



No nicks in Jubilee Lines
"Caslon" between R20/11,12
Only 1 known in this position.
Discovery



Right Arrow
Broken 't' R11/11



Broken 'h' R20



Large break black Jubilee Line, 2 known.

Only recently found.

1927 Pretoria OP
On London typo
New OP forme
Transposed languages



1927 Issue
Languages transposed

Basutoland, Swaziland

SA Officials
In Basutoland,
Swaziland

Basutoland

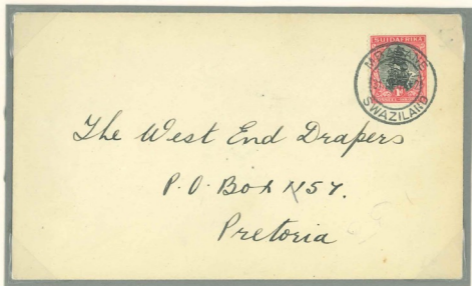


4 May 1933
PM reads "Maseru South Africa"
Stop after Afrikaans,
English stamp TR
9,10/9,10



4 May 1933 PM reads "Maseru South Africa"
Stop After Afrikaans, Afrikaans stamp 5/11
Short 'L' 6/11
'B' next to English=
Upper pane

Swaziland



31 December 1932
PM reads "Mbabne-Swaziland"

Swaziland

"Swaziland Revenue Only"



"SWAZILAND REVENUE ONLY"
On Pretoria Typo. 1927-30



"SWAZILAND REVENUE ONLY"
On un-hyphenated roto. 1931-3
Finer type



1d 'Swaziland Revenue Only' stamp fee for cheque. Mbabwane 26 October, 1931.
Unhyphenated Roto base stamp. Fine type

Rotogravure, Square Toe



T margin 32mm
R Margin 15mm
OP is on Issue 13



Normal high OP



Large black dot under 2nd yard
8/7, proves Issue 14

OP Low



POST EARLY
FOR
CHRISTMAS

Edward P.R. Tregaskis, Esq.,
M.R.C.S., L.R.C.P.,
Heilbron, Orange Free State Prov.,
S.A.



8 December 1937. UK-South Africa. 1/3d Printed rate.
1d duty for advertisement.

OP 'Consular/Konsular'



Customs Duty.

The overprint for customs duty on advertising was first done in English.
Soon changed to French, in spirit of bilingualism.

Red "Customs Duty" Pretoria Typo

Curly toed 'R'



Used pair
Mostly used singles

Red "Customs Duty"
Pretoria Letterpress, curly toe

Black 'Douane'. Pretoria Typo

Curly toed 'R'.



Black 'Douane'
Pretoria Letterpress



Perfin
"CT Co."

Bilingual Design 1935

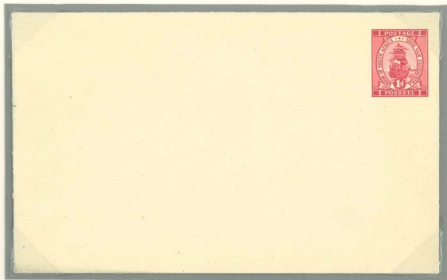
11. Stationery

An entirely new monocolour, bi-lingual Model .
Screened rotogravure.



Die 5. Envelope, Letter Card

Envelope
1930-1952



LETTER CARD



BRIEFKAART



Letter card
Screened photogravure
1943

TO OPEN THE LETTER CARD, TEAR OFF THE EDGE AT THE PERFORATION.
OM HIERDIE BRIEFKAART OOP TE MAAK, MOET DIE RAND LANGS DIE GEPERFOREERDE LYN
AFGESKEUR WORD.

The 2nd print on a few sheets of Issue 15 is smeary and has new varieties. Smaller stamp and wider 2mm gutter.



Frame break over 'S'
Issue 15, 17/3



25 October 1952

Smeary show 2nd print.
30c Kenyan
Sea to UK



Folded full sheet of the OP on Issue 15. **Very uncommon**

- Thick frame line over 'AF' R1/2.
- Heavy shading on top of the rays 4/3.
- Dot right of pennant tip 16/12
- Red break in 'Afrika' 11/3
- Dark red blob in leaves 17/4
- Black dot below pennant 18/4

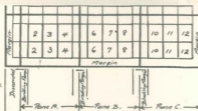
The 1935 "Advertisement" booklet, #10, used the same multi-positive as the stamps, with some rows blanked out for binding and advertisements.

21 panes/sheet, each with its own selection of ads and PO slogans.

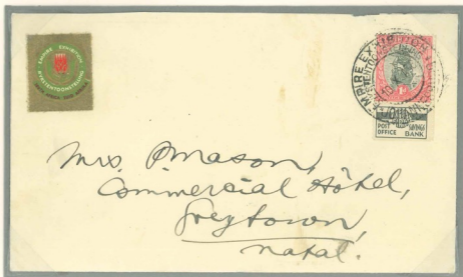


Complete booklet
Stamps and Advertising dividers

Arrangement of
panes
(from h/c)



10 October, 1935
Stamps from this
booklet can only
be identified if
they retain their
tag.



JIPEX 1936

10. Booklet

Panes

In October 1936, sheets of the 1935 booklet were overprinted. "JIPEX" on the stamps, and Johannesburg International Philatelic Exhibition, 1936' in both languages in the binding margins.

Sold as individual sheetlets. 21 different 1d sheetlets. Arrangement of ads different on each.



Panes from my complete set



First day cover 2 November 1936

B-11, the "blank border" booklet was issued in 1937. The same multi-positive was used as for the 1935 booklet. The main difference is the right margin was not removed, giving blank borders all around.



Complete
Empty
Booklet
All interleaving
with ads
Some panes



The "Razor Blade" booklets # 12, 13, were issued in 1937-8 for railway station vending machines for the benefit of travelers.
The only stamp guillotined top and bottom.



Two panes from same 1937 booklet
Both show broken yard arm on 2nd stamp



The 6d 'razor blade' booklet had 2 panes of 1d and 2 of 1/2d.



The 3d booklet Of 1938 had only 1 pane of each value
. Meant for travelers, they were mainly in RR stations.
Missing perf hole between stamps.

This "Advertising Booklet" #20 contained 2 panes each of the 1/4d, 1d and 1 1/2d..
Post Office slogans top and bottom and ads on the interleaves



Pane 19 of 21



Pane 14 of 21

Complete
Booklet



Advertising
Interleaf

FIVE ROSES
TEA

bears the stamp of

QUALITY

Include FIVE ROSES TEA
in YOUR Overseas gift parcel

Advertising
Back Cover



10. Booklet

Final Booklet 1951

Exploded

The last 1d ship booklet was in 1951. The stamps are similar to Issues 21-24, with a soft horizon, but **screened**. Contained 2 panes of 6 each of the ½d, 1d and 2d, plus blank interleaving

Intact booklet



A left or interior pane



A right hand pane with Sheet No. 22227



½d pane



2d pane

Interleaving blank
sheet.





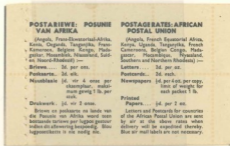
Front Cover



Inside front cover, Overseas rates



Outside back cover, Inland rates



Inside back cover, African Postal Union rates



8 September 1951
1d and 2d panes from this booklet.
1/10d registered Air to US. Correct.

1/2d pane on back with gutter from booklet sheet sold
over the counter



11. Stationery

Unhyphenated, 1931

Die 1
PO picture PC

Since this is an indicia study, only changes in that will be shown. Only 4 changes

"Postage Revenue" at bottom
replaced by Suidafrika
Curly toe 'R' top and bottom

SOUTH AFRICA

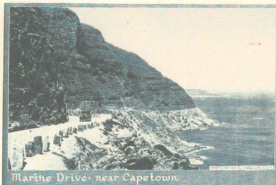
SUIDAFRIKA

Post Office
Picture Post Card
Divided back

Die 1.



Front
76%



1d Wrapper
Both 'R's curly toed

Press proof
Of frame and text

1d Newspaper wrapper

This Wrapper may contain only Newspapers or such documents as are allowed to be sent at the printed papers rate of postage. If this rule be infringed, the packet will be surcharged as a letter.

Hierdie omslag mag slegs gebruik word vir koerante of vir sodanige dokumente, wat as drukwerk verstuur mag word. Indien die reël oortree word, word die pakkie as 'n brief belaa.



Unhyphenated Monocolor 1926, 1931



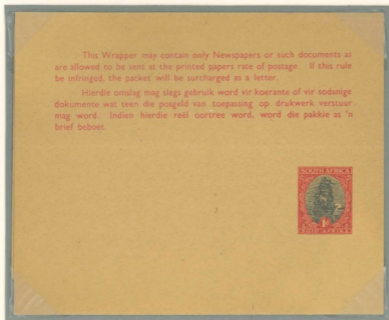
Curly toed top and bottom. Orange indium.
1d letter card rate
1926-1931



Curly toes top and bottom. Monocolor.
Orange rather than red color, only on these early Lettercards.
4 November 1931

1d Letter card up-rated by the PO for the new 2d Letter rate
(1.4.1931-4.1934)

SUID-AFRIKA

30 Dec 33
Hyphenated
Suid-AfrikaDivided back,
plain front.English on top of the
IndiciumHyphenated
Suid-Afrika

SUID-AFRIKA

Die 4
English on top

Plain back



Die 4a
Afrikaans on top
Plain back

1940-1

Two booklets, but same 1d stamps both booklets, B18,19
 different contents. Blank border at right.
 Balance sold at PO's.



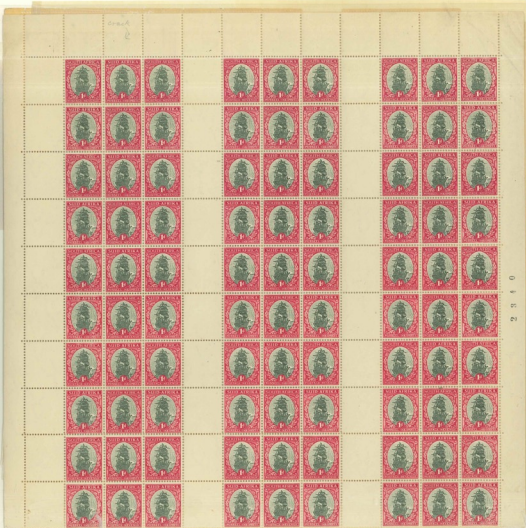
Folded Full Sheet of
 22 rows



1940. B-18, complete
 2 panes @ $\frac{1}{4}$, 4 @1d



1941 B-19, complete
 2 panes @ $\frac{1}{4}$, 2@1d, 2@1 $\frac{1}{2}$ d



4. Wide hyphen

Issue 8, 1933

Controls,
Varieties Cover

The new model hyphen does NOT overlap the 'L-'. Also wider lines at sides. Issues 8,9.
ID by arrows, varieties.



Totally Omitted Vignette
"Rare & Spectacular"
Gibbons

Appears to be from lower in the same
sheet as the next partial Omission.



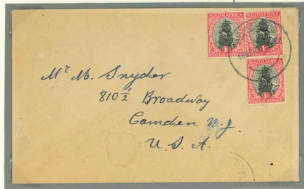
Partly omitted vignette
Extremely scarce (SG)



St. Elmo's fire.
BR English



Bottom arrow
White blob 'P' English 20/5
Smudge on 'A' English 20/7



2 red dots over 'H A'
R7/4, Multi
On Issues 8,9

10 March 1933
Before Issue 9.

3d sea to USA



"High Diver" R5/7
R5/7,8

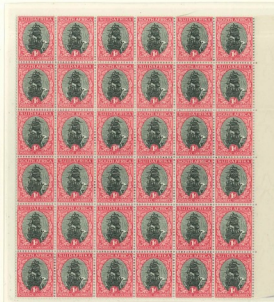


Black line under 'SO'
4/1,2

4. Wide Hyphen

Issue 8, 1933

Varieties
B36



B36, R13-18/7-12

Varieties prove Issue 8

13/10, break in white frame top left

14/10, Dot bottom loop of 'D'

16/8, Dot top of loop of 'D'

16/12, Break in white frame over 1st 'S' of Posseel.

17/7, Line below left curl

17/11, Dot in lower loop of 2nd 'S' of Posseel

Short, unremarkable issue.

Large red dot in 'I'
5/5Blotched hyphen in
'SUID-AFRIKA'
2/10Break in frame
Under deformed 'VE'
of revenue. 20/42 red dots in 'd'
Line up from 'N' of
revenue to top oval2/5,6
Smoke trail below
Pennant. M 2/5Dirt under doctor blade
For an instant
Leakage of the red inkNew Multipositive for issues 17-21. Issue 17 often shows whitish streak above 'Inkomste'
Called 'Sunset Issue' as dark sky makes ship NOT stand out.White line from leaf to
right frame. 1/6
Issues 17 & 18 (common
frame cylinder)

Right Arrow

Much lighter sky
at top 20/2R4/6,7
Dot in leg of 'A'
Afrikaans
R4/7Upper Vignettes much darker
than lower
Dot over pennant R15/3
R14,15/2,3Black dot under 1st 'A'
At 12:30 o'clock
English R7/2,3

Blotchy print and whitish streak

3 examples showing both blotchy printing and
the Whitish streak over bottom title.

1. Typo

Pretoria Issues 1927-29

Pre-production

A few plate proofs were made in Pretoria

Green and red
On thin card



Pre-production
Major errors

Major Errors, Imperf 3 sides and tete-beche



Imperf 3 sides
Perforator missed 1 beat
Rare



Tete-Beche
Rare

Pretoria Issue 1 1927

Control Varieties

1. Typo

R18-20/10-12
White blob in
spandrel,
right of value
R18/10



No break in Jubilee
line under 20/12
=Pretoria 1 print



Alignment
mark
between
R12/11-12



Later stage with blob also on
left toe of '1'
R18/10



Final stage
with blob
also
Mizzen yard



R11,12/1,2 Arrow
Plate crack R11/2,
Late print



The 1d Ship Stamp of South Africa 1926-1953 In its many guises

PURPOSE. To show the development of this design over its 27 year life as it went through many large and small changes in the many printings in the 31 basic stamp issues. Also the coils, booklets, stationery, consular, customs and foreign. The Officials have their own 10 frame exhibit.

TREATMENT. Divided into chronological chapters following changes in production method, basic design, the master negative and also the multi positive. Usages, both postal and revenue will be shown, as the stamps were valid for both. Then chapters of the other uses.

DIFFICULTY. Some of the issues are extremely difficult to identify, and will be so indicated. Fortunately I have been collecting South Africa for 70 years and have been able to identify every single issue. Some of the pre-production material is rare or unique.

BACKGROUND. It was decided to omit the King's head design of the previous series. The ship depicted is the Drommedaris, the ship of Jan van Riebeck, and carried the first settlers of the Cape. It is their Mayflower. Production began as letterpress in London. Those plates were then used in Pretoria for printing and making new plates. In 1930 they switched to a German rotogravure press that delivered finished sheets of perforated stamps. At first a Dutch screenless gravure system was used, but later a normal screened gravure system was used from 1950, and the spelling changed from un-hyphenated "Suidafrika" to the hyphenated "Suid-Afrika" in 1934.

Plan

- | | | | |
|---|--|---------------------------------------|--|
| 1. Typograph issues, Curly toe 'R' | | 6. Gutter widened. Issues 15-21 | |
| 2. Darmstadt Roto Trials | | 7. Screened. Issues 22-4. | |
| 3. Roto Issues 1-7 Square toe starts | | 8. Hard horizon on left. Issues 25-27 | |
| 4. Wider hyphen at bottom. Issues 8-9 | | 9. Coils | |
| 5. Suid-Afrika hyphenated. Issues 10-14 | | 10. Booklets | |
| | | 11. Stationery | |
| | | 12. Consular/Customs | |
| | | 13. Foreign OPs, Usage | |

Rejected Essays



Harrison essays

Plate proofs, color trials



Essay by Mr. Booysen



Waterlow plate proofs
Imperf, no watermark



Waterlow trial on paper
Blue and orange
Imperf



Waterlow trial on Paper
Red and Black
Imperf

London Issue

1. Typo

Has the curly toed 'R' and Suidafrika unhyphenated



Pre-production

The first ship stamps were from typographic plates made in London by Waterlow and printed there. Imperf on left margin, vs later Pretoria prints from same plates, imperf on right margin. The plates were almost perfect for the London printing, but acquired flaws later.

Die proof



Waterlow die proof in issued colors, Inset on card with paper cover (folded back).
"WATERLOW & SONS/SPECIMEN" handstamp at bottom right corner.
"Very rare" Only one known

The new cylinders have two distinctions. All odd numbered Afrikaans stamps show a 'bud' on leaf tip under scroll. All even numbered ones show a whitish spot at bottom 2 right leaves. 7 and 7a differ only in the large arrows in 7a.



Issue 7, a



Missing Vignette
Rare
Only recently accepted by
Gibbons. G

Issue 7, Fine arrows



Bottom Arrow Iss 7
Top yardarm extends to oval. 20/7



Submitted by *David Hoffstadt*

Issue 7a, Broad arrows

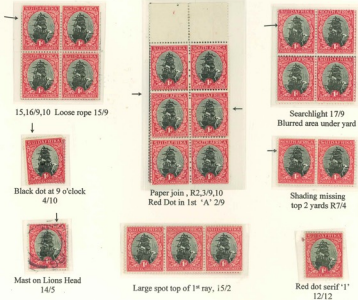
Large right arrow
=Iss 7a



Large bottom arrow
=Iss 7a



Varieties, 7, 7a



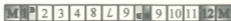
10. Booklet

Roto 1930

All Panes

1930 Booklets B-8&9.

Identical stamps. Only unhyphenated Roto booklets



Pane A Pane B Pane C



Pane A

Pane B

Panes A, B above. Two binding margins with stitch marks.

"Extremely Rare" (Welz auctions). Featured on cover of their catalog.



Left is WM up, Right is WM invert.

Pane C

Binding margin at right and blank at left.

Proves Booklet Pane C

WM UP

Frame 7

"Borderless" 1939

Borderless
Booklets
B-14 to B-17

different covers, but the same 1d panes.

the same multi-positive as Issue 15, with the smaller size

stamp and larger perf gutters.



1939 'Borderless' Booklet
Coat of arms at left. B-14



Late 1939 'Borderless' Booklet
Coat of arms centered. B-15-17



1d pane from early booklet
"SPECIMEN"
Only one known

South West Africa

S.W.A. On Typo stamps

Specimen, Curly toe

Frame 8



SPECIMEN
Handstamp in Purple
For SA Postal Union
Few pairs known



SWA Low-Normal



SWA High

10 September
1922
SA to
Germany
3d Seamil-
Correct.



KUT

1941

Specimen.
Prints, Covers

Frame

8

om the UK, so emergency OP on South African in Pretoria
Issue 14. 2nd issue 15th July, a few from Issue 15



Pair, OP 'Specimen'
Seemingly a rubber handstamp applied in Nairobi.
Only example seen. #



Dry Print
Right 'DA'
Almost missing



Issue 14, R11/3,4
Broken rope bottom yard 11/3
Large dot before 'U' 11/4 #



FDC 1 July, 1941
Proves 5c on 1d is from Issue 14