



230964 A (1)

230964 A (1)

DAVID



France

1900 - '29



1900



1900 - '27



2 fr.  
violet et jaune  
violet and buff



20 fr.  
lilas et vert  
lilac and green

1902



1903 - '38



1906



1906 - '26 Gravure fine. Thin figures





1914



1914



1919



1917 - '19



5 + 5 fr.  
bleu et noire  
blue and black

1918



1921



1923 - '26



1926



1924



1924



1925



1924 - '25



1926-'27



1926-'27



1927



1927



1927



1928



1929



1928



1929



1930



1929



1929 - '32



1930



1930



1930



1930



1930 - '31



1931



1933



1934



1933



1934



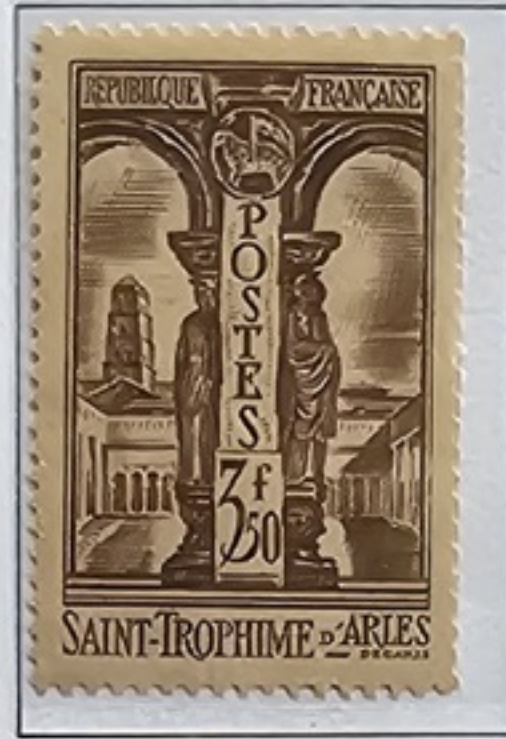
1932 - '39



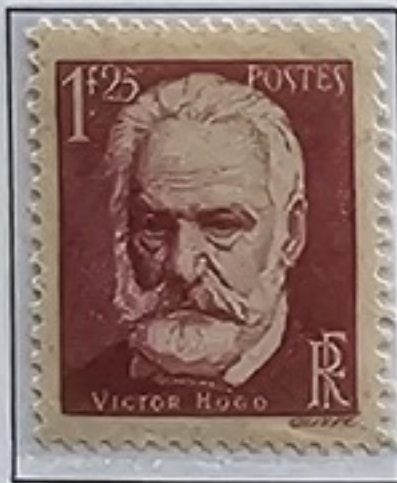
1934



1935 - '36



1935



1935



1935



1935



1935



1936



1936



1936



1936



1936



1936



1936



1936

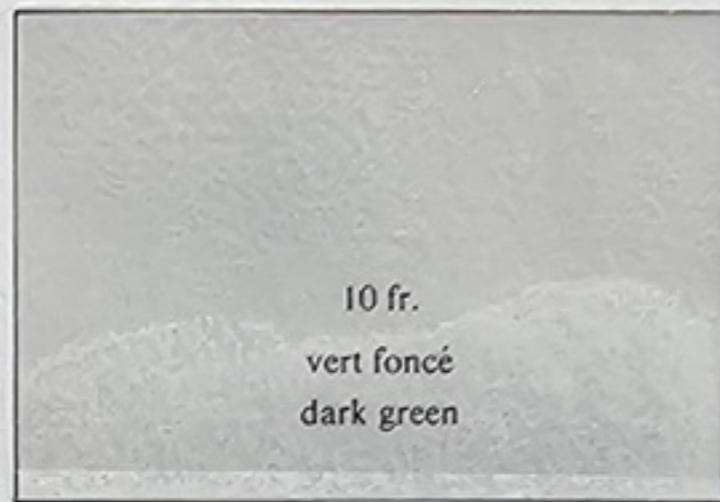


1936



1936

1936



1936



1936



1937



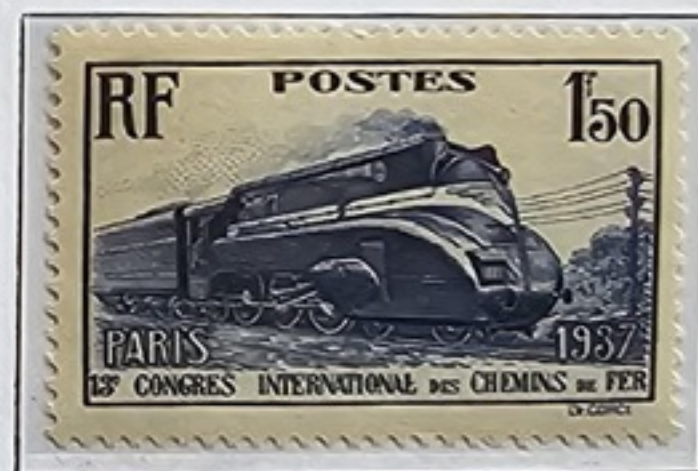
1937



1936



1937



1937



1937



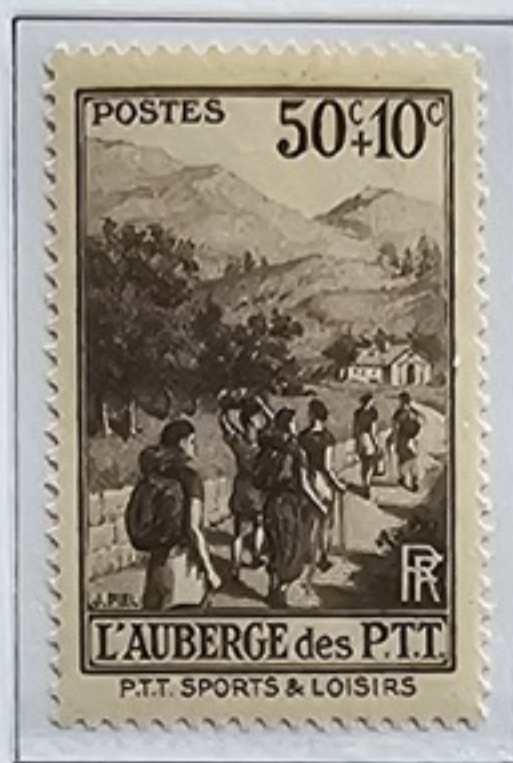
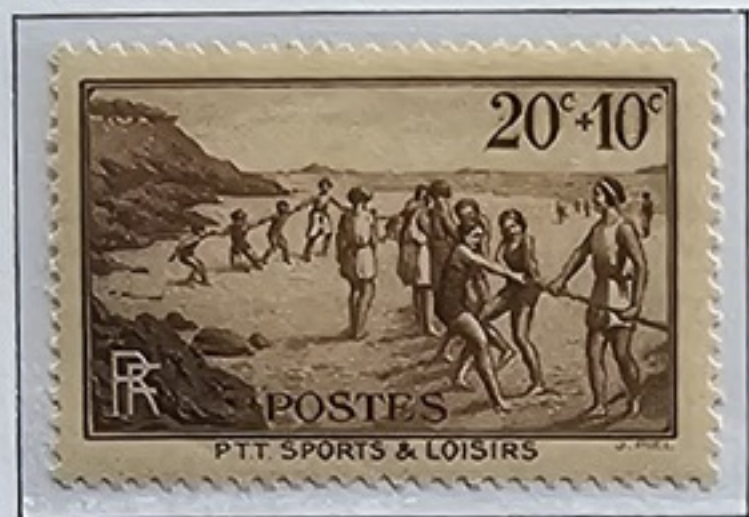
1937



1937



1937



1937



1937



1937



1937



1937



1937



1937



1937



1938



1938 - '41



1938 - '39



1938



1938



1938



1938



1938



1938



1938



1938



1938



1938



1938



1938



1938



1938



1938 - '42



1938



1939



1939



1939



1939



1939



1939



1939



1939



1939



1939



1939



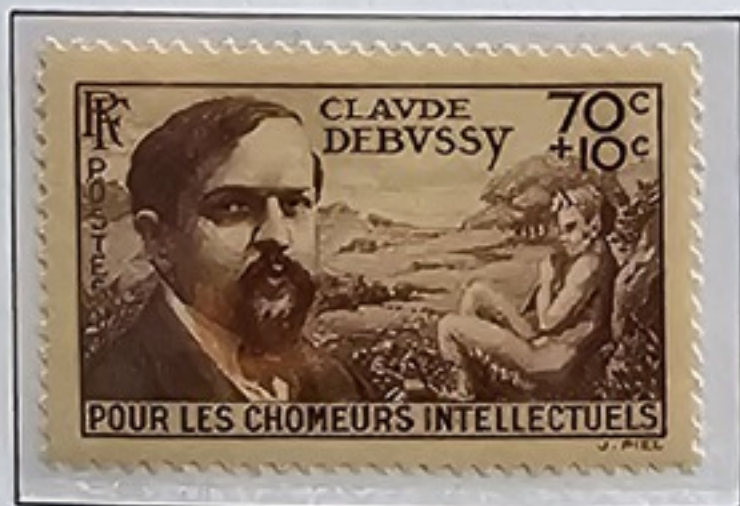
1939



1939 - '44



1939



1939



1939



1939



1939



1939



1939



1939



1939



1939



1940



1940



1940



1940



1940



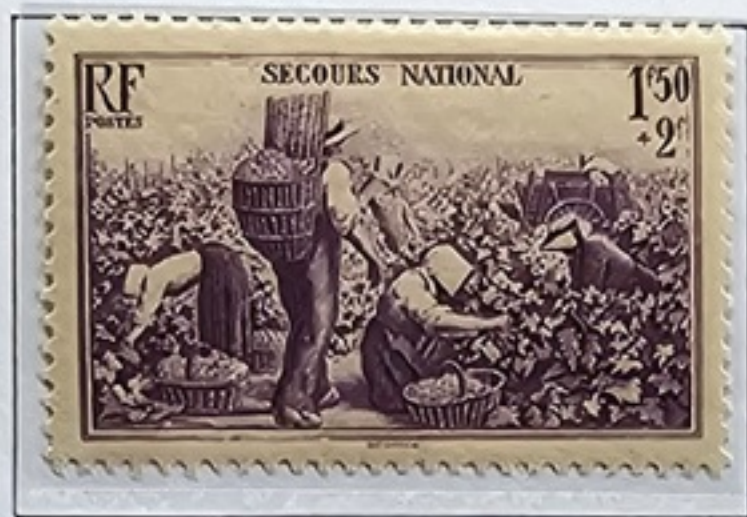
1940



1940



1940



1940 - '41



1940



1940 - '41



1941



1941



1941



1941



1941



1941 - '42



1941



1941



1941 - '42



1941



1942



1942



1942



1942



1942



1942



1942



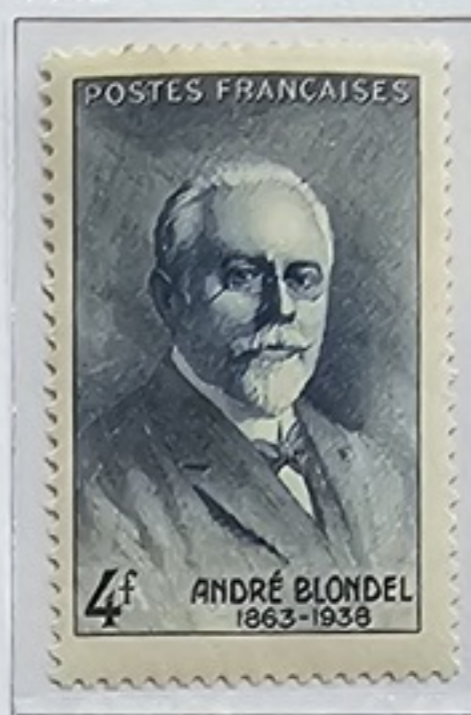
1942



1942



1942



1942



1942

1943



1942



1943



1943



1943



1943



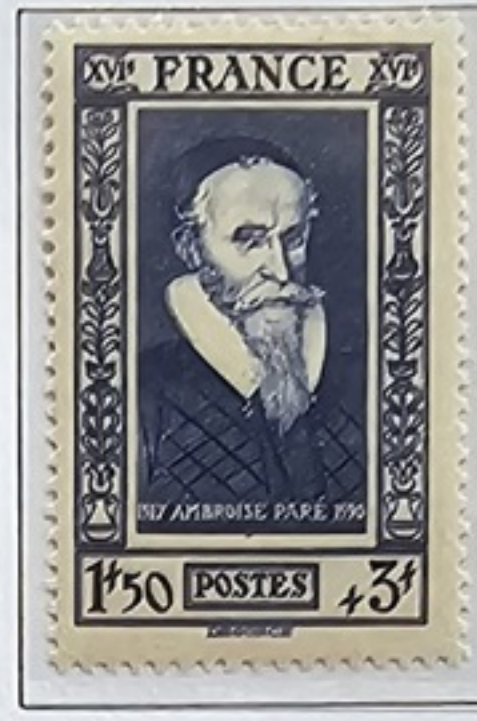
1943



1943



1943



1943



1943



1944



1944



1944



1944



1944



1944



1944

1944



1944



1944



1944



1944



1944



1944



1944



1944



1944



1945 - '47



1944



1945



1945



1945



1945



1945



1945



1945



1945



1945



1945



1945 - '51





1945



1946



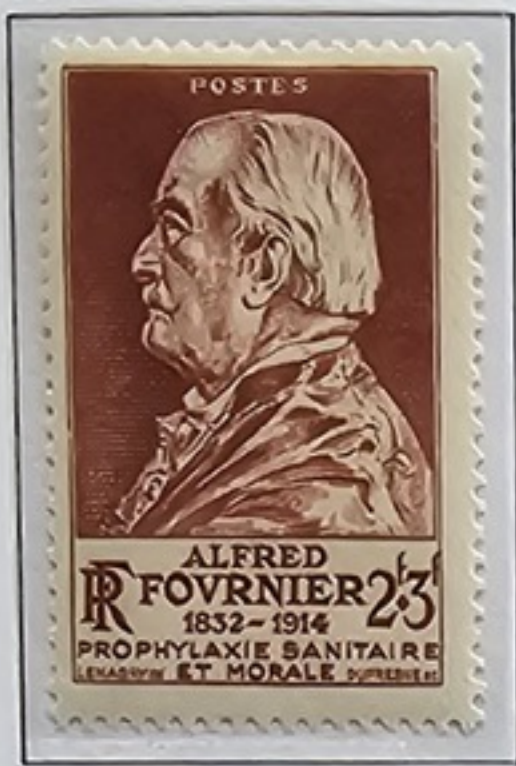
1946



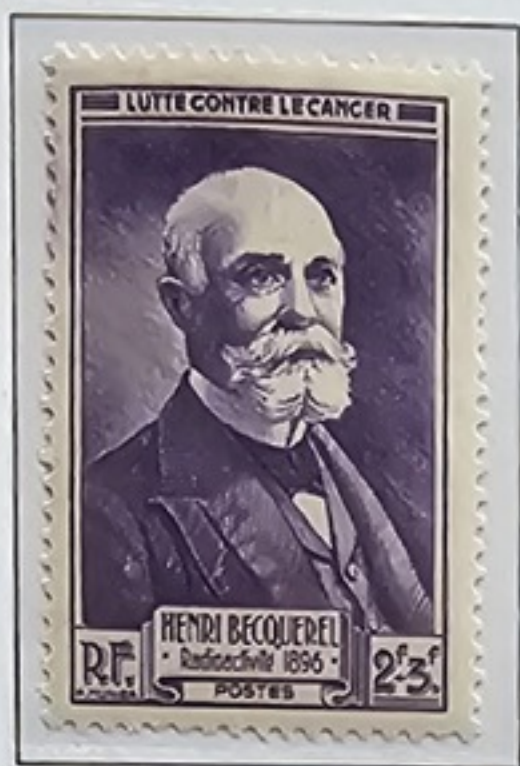
1945



1946



1946



1946



1946



1946



1946 - '48



1946



1946



1946



1946



1947

1947



1947



1947



1947



1947



1947



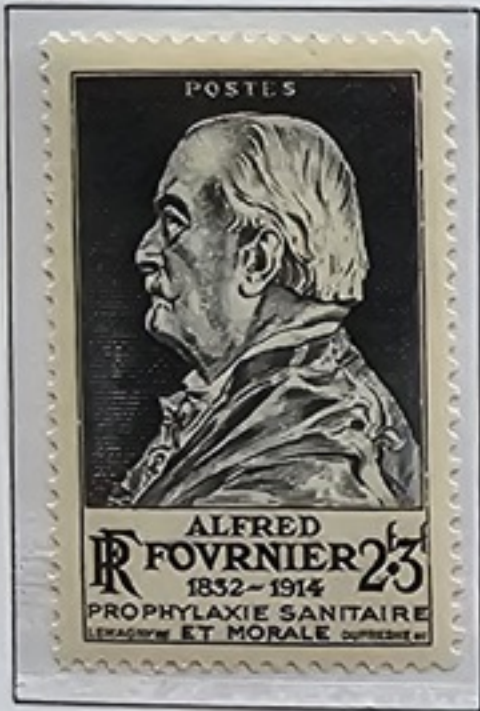
1947



1947



1947



1947



1947



1948



1947 - '48

1947



1949



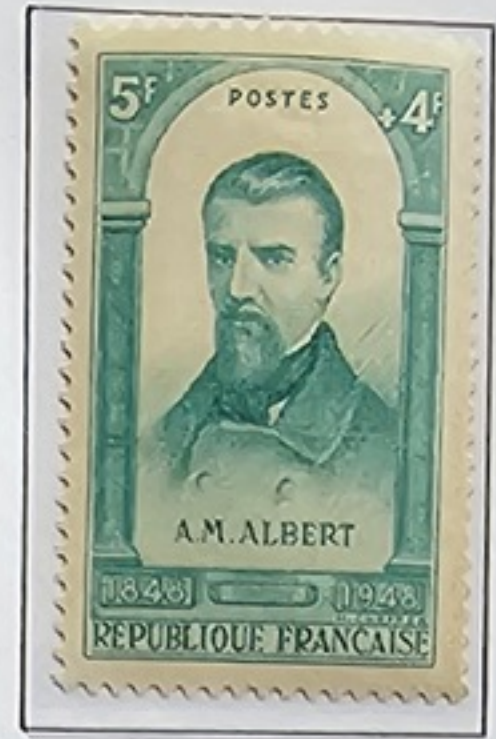
1948



1948



1948



1948



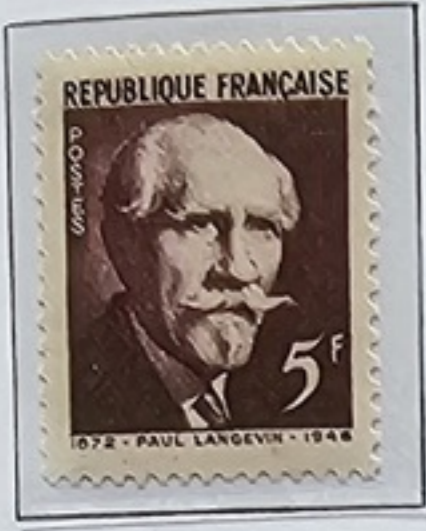
1948



1948



1948



1949



1948



1949



1949



1949



1949



1949



1949



1949



1949



1949



1949



1950



1949



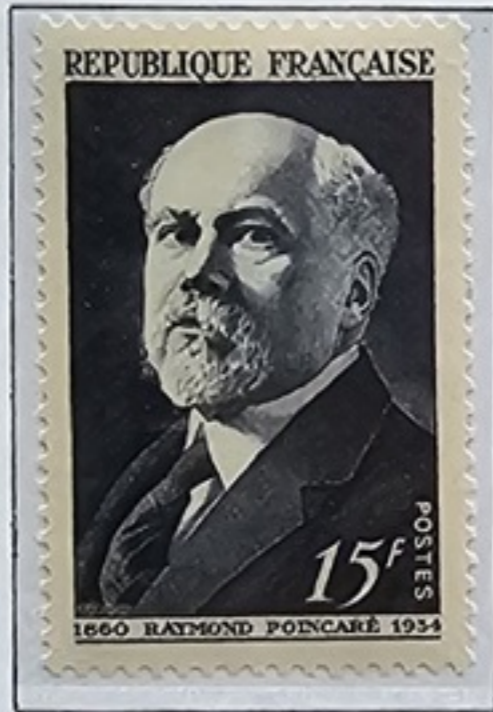
1949



1949



1950



1950



1950



1950



1950



1950



1951



1950



1951



1951



1951



1951



1951



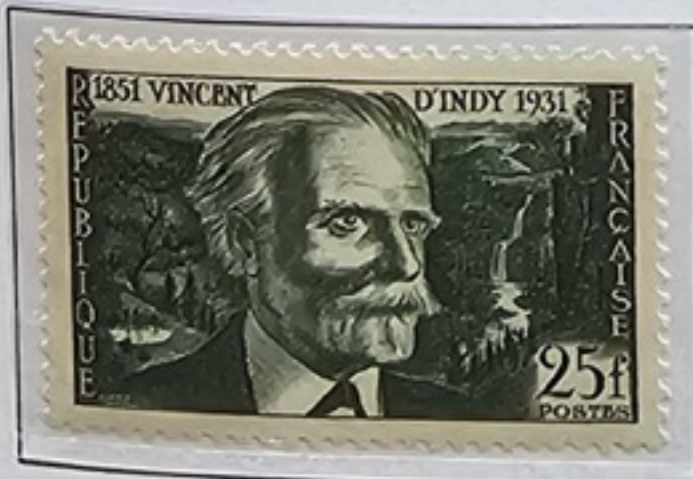
1951



1951



1951



1951



1951



1951



1951



1951



1951



1951



1951



1951



1951



1951



1952



1951



1951



1952



1952



1952



1952



1952



1952



1952



1952



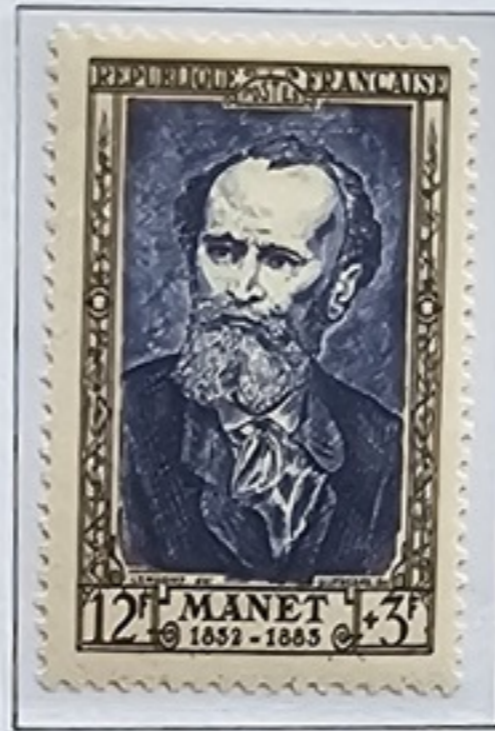
1952



1952



1952



1952



1952



1952



1953



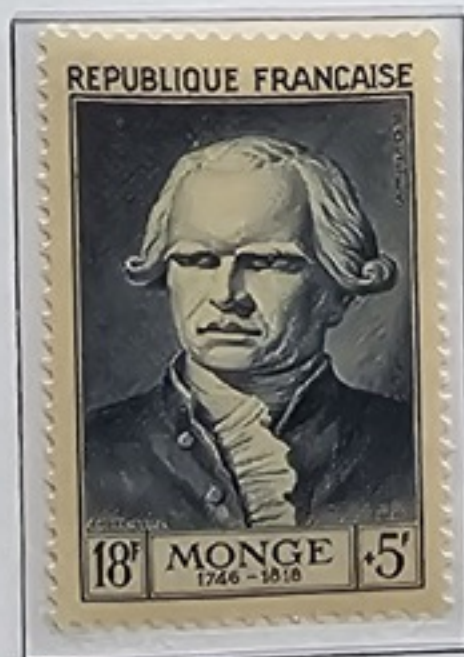
1953



1953



1953



1953



1953



1953



1953



1953



1953



1954



1954



1954



1954



1954



1954



1954



1954



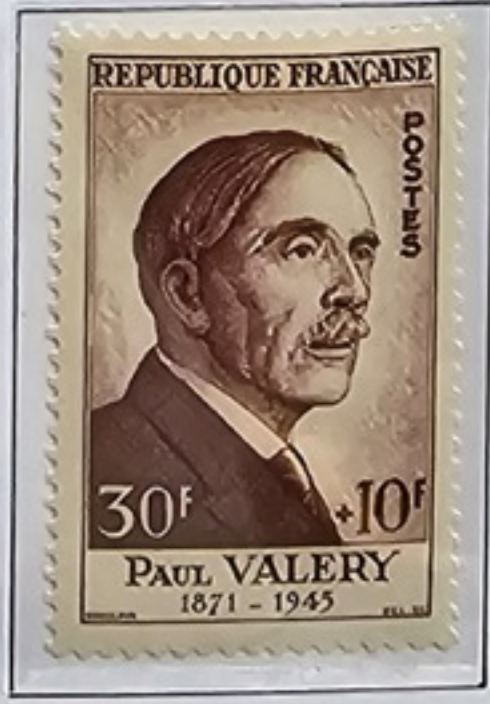
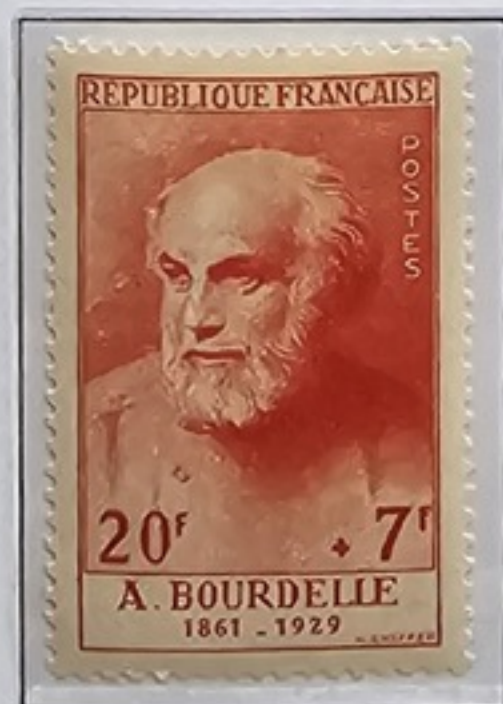
1954



1954



1954



1954



1954



1954



1954



1954



1954



1954



1954



1955



1955



1955



1955



1955



1955



1955



1955



1955



1955



1955



1955



1955



1955



1955



1955



1955



1955



1955



1955



1955

