



David Feldman
INTERNATIONAL AUCTIONEERS



Mauritius

The "Port Louis" Collection

Geneva - Thursday, November 21, 2024 at 15:00 CET



Mauritius

The “Port Louis” Collection

Geneva - November 21, 2024 at 15:00 CET

© 2024 David Feldman SA
All rights reserved

All content of this catalogue, such as text, images and their arrangement, is the property of David Feldman SA, and is protected by international copyright laws.

Printed in the UK by Pardy & Son Printers Ltd.

Cover images: front, lot 70021; back, lot 70009.

Colour and size disclaimer. We strive to present the lots in this catalogue as accurately as possible. Nevertheless, due to limitations of digital scanners, digital photography, and unintentional variations on the offset printing presses, we cannot guarantee that the colours you see printed are an exact reproduction of the actual item. Although variations are minimal, the images presented herein are intended as a guide only and should not be regarded as absolutely correct. All colours are approximations of actual colours. Images sizes may also be different from the actual sizes of the items.



David Feldman
INTERNATIONAL AUCTIONEERS



We strive for excellence

and we go the extra mile for our consignors

Contact us to discuss your consignment
to our auctions at info@davidfeldman.com



Autumn Auction Series

Geneva, November 18-24, 2024



David Feldman
International Auctioneers

Tel +41 22 727 07 77

info@davidfeldman.com



www.davidfeldman.com

We are delighted to present our largest auction in the past 10 years, featuring over 7,500 lots; a fantastic selection of world philately and rarities of the world.



- **Egypt**, including Early Stampless Mail, First, Second and Third Issues, Kings Fouad & Farouk, Commemoratives and other issues
- **Switzerland**, with a great selection of rarities and covers, from classics to modern
- **Great Britain**, including some of the most significant line-engraved rarities in existence
- **British Empire**, including Ireland, with the Des Quail Collection of Postal History (Part III) and the Cousins Collection of Overprints (Part III); South Africa with the Robert Hisey collections and important Transvaal
- **Mauritius**, the “Port Louis” Collection, from “Post Paid” to “De La Rue” issues
- **France and Colonies**, with the largest offering the company has ever presented
- **Europe, Overseas and All World Collections**, including the Robert Hisey collection of Finland, major rarities from across Europe and US rarities from the Charles Mangham collection

Auction Bidding Options

There are several ways to bid in our auctions (if you cannot attend in person). Bids can be made by email, telephone, and through our Web site.

Written Bid Form

You are invited to bid before the auction, using the bid forms enclosed with the catalogue.

- Write down the lot numbers of interest to you and your bids on them
- Complete your personal information
- Sign the form on the last page of this catalogue and send it either:
 - by email: info@davidfeldman.com
 - by post: David Feldman SA,
PO Box 29, Chemin du Pavillon 2
1218 Le Grand-Saconnex, Geneva, Switzerland

Bids initially made by telephone must be supported by written confirmation by post prior to the sale.

Phone Bids During the Auction

If you wish to bid by phone, you should confirm in writing 48 hours before the auction indicating the lot numbers you wish to bid on and phone number(s) where you can be reached during the auction. Due to the availability of multiple other bidding options, telephone bidding is accepted at the discretion of David Feldman SA. One of our philatelists will call you a few lots in advance of your first lot of interest, and bid for you directly during the auction.

Online Bidding

Participate in any David Feldman auction from the comfort of your home, office, or while travelling.

New Clients

If you are a new client, please follow these steps to save your pre-auction bids and/or create a live bidding account.

- Select "My Account" on www.davidfeldman.com and follow the steps to create your personal account
- During the account creation process you will be sent a request to complete a new client registration form, where you will be asked to confirm your contact details and provide credit references and proof of identity.

Pre-Auction Bidding

Once your details have been confirmed, you will then be able to enter any bids in advance of the auction via our web site.

- Log-in to your account
- Browse the auction lots to find those items that interest you
- Enter the maximum amount you want to bid for any lot
- Click the "Bid" button
- Repeat for each desired lot
- Monitor your bids to see if you have been outbid

Live Auction Bidding

You may also bid live in any of our auctions via the Internet. Follow your targeted lots on screen and enter your bids with the confidence that you will be bidding as if you were in the auction room itself.

- Click on the "Live Auction" button on the home page
- Log-in to the auction
- Follow the auction and click the "Bid" button to register your bid with the auction
- Defend your bid(s) as needed

Reminder. These are the instructions for existing clients who have already made auction bids with us using existing credentials. If you are a new client, or an existing client who has not bid via the internet before, please ensure that you create your account **at least 48 hours before the auction** and ensure that you provide us with the information requested during this process without delay.

Auction Agenda

Autumn Auction Series – November 18-24, 2024

DATE	TIME (CET)	CATALOGUE	CURRENCY
Monday, November 18	10:00	Switzerland	CHF
	13:00	Egypt	CHF
Tuesday, November 19	10:00	France / France Collections	EUR
Wednesday, November 20	10:00	French Colonies	EUR
	15:00	All World Collections	CHF
Thursday, November 21	10:00	Great Britain	GBP
	15:00	Mauritius – The “Port Louis” Collection	GBP
Friday, November 22	9:00	British Empire	GBP
Saturday, November 23	9:00	Europe (A to Romania)	CHF
Sunday, November 24	9:00	Europe (Russia to Y) & Overseas	CHF
	16:00	USA	USD

This catalogue is your personal invitation to participate in the auction.
Ce catalogue fait office d’invitation personnelle pour participer à la vente aux enchères.
Dieser Katalog dient als persönliche Einladung zur Teilnahme an der Auktion.

Auction Bidding Agents

Commissionnaires / Kommissionäre

David Feldman SA is pleased to handle your bids, representing you as if you were present in the auction room.

However, if you would like to be represented by a professional bidding agent, we list below a number of persons who regularly bid at our sales on behalf of clients.

David Feldman SA prend soin de vos offres lui parvenant directement et vous représente au mieux de vos intérêts comme si vous étiez dans la salle des ventes.

Dans le cas où vous préféreriez néanmoins passer par un commissionnaire, nous listons ci-après certaines personnes prenant régulièrement part à nos ventes en représentant des acheteurs.

David Feldman SA ist gerne bereit, Ihre Gebote so zu vertreten, als wären Sie selbst im Auktionssaal anwesend.

Wenn Sie jedoch von einem professionellen Bietagenten repräsentiert werden möchten, finden Sie unten eine Liste von Personen, die regelmäßig bei unseren Auktionen im Namen von Kunden mitbieten.

Germany

Jochen Heddergott **Tel** +49 89 272 1683
Mobile +49 151 4040 9090
Email jh@philagent.com

Lorenz Kirchheim **Tel** +49 40 645 32 545
Email lorenz.kirchheim@t-online.de

Great Britain

Trevor Chinery **Tel** +44 7527444825
Auction Agency **Email** trevortrilogy@aol.com
Website philatelic-auction-agent.co.uk

Nick Martin **Mobile** +44 770 376 6477
Email nick@martinlincs.uk
Website loveauctions.co.uk

Italy

Giacomo Bottacchi **Mobile** +39 347 -922 0225
Email gbstamps@iol.it

USA

Charles E. Cwiakala **Tel** +1 847 823 8747
Email cecwiakala@aol.com

Purser & Associates **Tel** +1 857 928 5140
Email info@pursers.com

Frank Mandel **Mobile** +1 718 873 5702
Email earlybird1@me.com



David Feldman
International Auctioneers

Tel +41 22 727 07 77

info@davidfeldman.com

Our Team

Direction	Joel Feldman Nalis Feldman David Feldman	Managing Director Head of Administration and Human Resources Founder and Managing Director Emeritus
Philately	Jean-Roger Bardeau Vivek Chopra Guy Croton Markand Dave Gérald Imbert Marcus Orsi Jean-Luc Rossel François Rouiller Ricardo Verra Michael Vojta W. Danforth Walker Bruce Weinman Allan Westphall	Senior Philatelist – France Representative – West Coast of the USA Senior Philatelist & Head of United Kingdom Representative – India Senior Philatelist & Head of France Director of Philately (emeritus) Representative – Switzerland Senior Philatelist – France Director of Philately Senior Philatelist – Eastern Europe Ambassador – USA Representative – East Coast of the USA Senior Philatelist & Numismatics expert
Administration	Riccardo Bassi Steve Bodenne Nida Delplanque Rodolfo Nascimento Mélanie Wyssa	Administration & Client Service Head of Logistics Administration & Client Service Logistics Assistant Accountant
Creative Hub	Francesco Baita Eva Mondehard Alex Porter	Head of IT & Senior Multimedia Creator Marketing Coordinator Head of Marketing & Senior Graphic Designer
External Consultants	Tony Banwell Gary Dubro Tim Francis David MacDonnell Michael Tseriotis	Consultant in the UK Consultant in the USA Consultant Philatelist & representative for the UK Consultant in Ireland Consultant in Greece
Agents	Philippe Abert Jorge Del Mazo Carlos Hernández Rocha Yves Louis Bill Schultz Jean-Jacques Tillard Pierre Wertheimer	France Argentina Uruguay France Canada & USA International Agent International Agent



Payment Instructions

Instructions de Paiement / Zahlungsanweisungen

Bank Transfer / Transfert Bancaire / Banküberweisung

Credit Suisse - 8 Paradeplatz, Zürich 8070, Switzerland

Swiss Francs (CHF)

Account 0316-398878-81
IBAN CH02 0483 5039 8878 8100 0
Swift / BIC CRESCHZZ80A
Beneficiary David Feldman SA

US Dollars (USD)

Account 0316-398878-82
Iban CH65 0483 5039 8878 8200 0
Swift / BIC CRESCHZZ80A
Beneficiary David Feldman SA

Euros (EUR)

Account 0316-398878-82-3
IBAN CH81 0483 5039 8878 8200 3
Swift / BIC CRESCHZZ80A
Beneficiary David Feldman SA

British Pounds (GBP)

Account 0316-398878-82-4
Iban CH54 0483 5039 8878 8200 4
Swift / BIC CRESCHZZ80A
Beneficiary David Feldman SA



Many clients have found the option of paying by Wise Payments (www.wise.com) both cost efficient and timely. We highly recommend this option for those clients unable to pay by bank transfer.

Credit card / Carte de crédit / Kreditkarte

Accepted credit cards

For invoices of less than CHF / EUR / USD / GBP 2'000

- Visa
- MasterCard
- American Express (charges made in CHF only)

Please note that all credit card payment will incur an additional charge of 3% plus possible other fees, such as £10 standard fees on GBP payments. Please also note that credit card payments usually take 10-20 working days to be credited to our account and if you pay in this manner, we kindly request your patience.



David Feldman
International Auctioneers

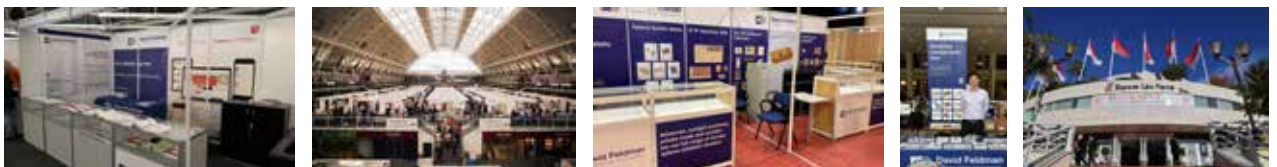
Tel +41 22 727 07 77

info@davidfeldman.com

Meet our Philatelists!

We will be present at the following shows:

- November 22-24, 2024 – Chicagopex, Chicago, IL, USA
- December 5-8, 2024 – MONACOPHIL, Monte Carlo, Monaco
- January 17 & 18, 2025 – York Stamp & Coin Fair, York Racecourse, York, UK
- March 27-29, 2025 – Salon Philatélique de Printemps, Paris, France
- May 8-11, 2025 – EuroPhilEx, Birmingham, UK
- May 14-17, 2025 Bernaba'25, Bern, Switzerland
- July 18 & 19, 2025 – York Stamp & Coin Fair, York Racecourse, York, UK
- On dates to confirm: Paris-Philex and Stampex 2025



In addition to personally meeting our multilingual, expert philatelists and chatting with them, at our stand at any exhibition, you can benefit from:

- Getting an appraisal of your stamps without any commitment on your part
- Advice on buying and selling your collection or any philatelic item
- Getting to know the terms and conditions of our auctions and Private Treaty options
- General information about the hobby of stamp collecting or a particular collecting interest
- Viewing and taking home catalogues of our upcoming auctions
- Potential viewing of lots of our upcoming auctions

Viewing in Geneva

November 18-24, 2024 (Before November 17 by appointment)



**David Feldman
International Auctioneers**

Chemin du Pavillon 2
PO Box 29
1218 Le Grand-Saconnex, Geneva

From 9am to 7pm daily.
Viewing of lots on weekends
or evenings can be arranged.



Your first night at the Hilton is on us!

When you come to Geneva for
viewing, your first night's stay at
the Hilton will be paid by us.
Please, contact us before booking.



David Feldman
International Auctioneers

Tel +41 22 727 07 77

info@davidfeldman.com



www.davidfeldman.com

Introduction

Dear Collector and Client,

David Feldman, both our Managing Director Emeritus and the company, have been inextricably linked with the philately of Mauritius since our landmark auction of Kanai's collection of Mauritius over 30 years ago. This tradition of offering the best collections on the market has continued since then with the sales of the "Adamastor" and "Tatiana" collections, as well as iconic rarities such as the "Post Office" printing plate and the "Bombay" cover.

So it brings us enormous pleasure to present the "Port Louis" collection of Mauritius, featuring over 400 lots from the Earliest Post Paid through all the primitives and Britannia issues, then to the De La Rue issues from Queen Victoria up to King George V and concluding with the Express stamps.

The collection includes some of the most important stamps and covers of classic Mauritius. This includes the largest known multiple of the Earliest Impression issues, lot 70009, the stunning 1d used block of six, which has graced the collections of Hind, Burrus, Kanai and "Tatiana". Another one of the 'crown jewels' is the famous Early Impression 1d and 2d on a cover from Souillac, which is one of only two known combinations of both values on cover and the only one with the Early Impression on cover.

The collection also has probably the best assortment of De La Rue issues we have ever handled, with some amazing essays, die proofs, colour trials, archive items and varieties, with many items emanating from the Marion collection, including the gorgeous 10d essay which donned the front cover of the catalogue.

It is such a privilege to be able to bring to the market such a special collection, and to present the items in the best way possible to maximise their potential through our experience in lotting, describing and estimating to produce a catalogue worthy of displaying these philatelic treasures in their best possible light.

We'd like to thank Dirk Michalski for his help in adding provenance and extra guidance on the rarity of some of the items in this auction. He has been collating a census of the classic issues of Mauritius and would be pleased to hear from fellow collectors who might be able to add to it. His email is dirkmichalski@t-online.de.

The David Feldman team strives for excellence in the lotting and promotion of every property entrusted to us. We invite you to visit us in person or via the Internet to examine and determine those lots which may be of interest to you. We wish you success with your bids and satisfaction with your purchases.

Warm regards,

Ricky Verra
Director of Philately

Geneva, October 2024

Mauritius

Pre-Stamp & Stampless Postal History	70000-70001
Incoming Mail	70002-70003
GB Used in Mauritius	70004
1847 Post Office Issue (SG 1-2)	70005-70008
1848-59 Post Paid Issue	70009-70077
1858-62 Britannia Issues (SG 26-35)	70078-70110
1859 Lapirot Issue	70111-70118
1859 Sherwin Issue (SG 40)	70119-70124
1859 Dardenne Issue (SG 41-44)	70125-70151
1860-72 De La Rue Issues (SG 46-72)	70152-70188
1876-78 Surcharges (SG 76-91)	70189-70204
1879-80 De La Rue Watermark CC (SG 92-100)	70205-70243
1883-94 De La Rue Watermark CA (SG 101-111)	70244-70249
1883-91 Surcharges, Arms & Jubilee Issues (SG 112-35, 137)	70250-70285
1899 Birth Bicentenary of la Bourdonnais (SG 136)	70286-70301
1900-05 Arms Issue (SG 138-155)	70302-70350
Later Issues	70351-70402
Express Delivery Stamps	70403-70427
Mauritius Used in Seychelles (B64)	70428-70432
Collections	70433-70436

London

W. G. & S.
57



re Louise

Denlah Terrace



Harrogate

Yorkshire


England

Mauritius


Pre-Stamp & Stampless Postal History

- 70000  1852 (Apr 8) Cover sent to Hérault with red oval "Packet Letter Mauritius", sent via Marseille and Bordeaux, some soiling, fine cover. 100 - 150
- 70001  / 54 1860 (Aug 28) Entire from Madras, India, to Mauritius with "Late Received" hs (type IID-3 and a **rare postmark according to Kanai**), endorsed "per Mermaid" and charged "1/", reverse with GPO Mauritius double circle ds, very fine. 400 - 600

Incoming Mail

- 70002  / 54 1887 envelope to Port Louis, showing "Ship letter" h.s. (Type SL11) in black, very fine "52c/to pay" h.s. (UP75; the only recorded example) and, on reverse, clear arrival datestamp (9.10). Rare. 200 - 300



- 70003  1851 (Sep 17) Small envelope from Torquay to London and then on to Mauritius, franked GB 1851 1d red tied by 'B03' P&O Mail Boat barred oval and 'MAURITIUS/GPO/SP.17.1851' crowned circle with unframed black 'Ship Letter' alongside, cover small faults; detailed certificate Louis (2020). 1'300 - 1'800
- Rate: The 1d paid the local postage rate within London and readdressed and forwarded to Mauritius with no postal charges raised because addressed to Blyth brothers which owned their own fleet of vessels providing regular service between Mauritius and London, this special status granted free ship letter postage in Mauritius (see Peter Ibbotson page 22).
- Only three GB line engraved covers are recorded to Mauritius, as a Blyth brother free ship letter it is unique. A rarity of Mauritius postal history.**

GB Used in Mauritius



70004



15'000 - 20'000

1862 (Jun 9) Envelope to Dublin with GB 1855-57 6d pale lilac, wmk Emblems tied by "B53" numeral and Dublin cds, red "1 1/2d" hs, reverse with Mauritius despatch, H&K Pact and Belturbet arrival, minor envelope faults, **the only known usage of GB in Mauritius**, a major used abroad postal history rarity, cert. BPA (2003).

Bidding Steps

50-100	→ 5	500-1000	→ 50	10'000-20'000	→ 1'000
100-200	→ 10	1'000-2'000	→ 100	20'000-50'000	→ 2'000
200-500	→ 20	2'000-5'000	→ 200	50'000-100'000	→ 5'000
		5'000-10'000	→ 500	100'000-200'000	→ 10'000

All bids in British pounds

Bids between these steps will be adjusted accordingly to the next higher bid step.

1847 Post Office & Post Paid Sperati Forgeries



70005

1847 “Post Office” 2d essays or proofs on cardboard paper in the correct shade and in the red that was used for the 1d value; the red is dated 3/51, indicating March 1951 and the blue has some partially erased production notes on reverse that probably pertain to exposure time and temperature. Also two glass clichés of the same 2d value in very light red and in greenish-blue (with image reversed) with some production notes. It is worthy of note that the 2d value has the tiny thin line in the bottom right corner, the secret marking that the Royal Philatelic Society put on reproductions to tell them apart from the genuine stamps. **A stunning set of two matching pairs of this most iconic Sperati production, hitherto unrecorded,** housed in Sperati’s cardboard box of photographic paper from the Lumière brothers.

20'000 - 30'000

Additional note on rarity and relevance: Nothing about the “Post Paid” was recorded in the Sperati II handbook by Robson Lowe and Carl Walske, and no examples were found in the Musée de la Poste of Paris.



70006

1848 "Post Paid" 1d, a spectacular assembly of twelve items for the production process of this famous stamp, comprising seven glass clichés in the various colours preferred by Sperati to create good contrasts, four clichés on celluloid showing experimentation with colour shades, also proofs on medium wave paper, one exhibiting a double impression in black, with Sperati's note "2/1"; **a truly remarkable selection that shows the progression of the matrix from glass clichés to experimental impression.** The lot is housed in Sperati's box "Nouvelles Plaques Eclair, Papiers Photographiques".

10'000 - 15'000

Additional note on rarity and relevance: Nothing about the "Post Paid" was recorded in the Sperati II handbook by Robson Lowe and Carl Walske, and no examples were found in the Musée de la Poste of Paris.



70007

1848 "Post Paid" 1d, an attractive group of four items, comprising one glass cliché with impression in vermilion, and two proofs on paper, in black (numbered "117") and in red-vermilion, also one glass cliché of the PAID in circle cds in negative coloured dark brown. **A spectacular assembly of proofs, cliché and the accompanying postmark, unique as such and of the highest rarity.** This lot comes with Sperati's own cardboard box for photographic paper of the Lumiere brand.

2'000 - 5'000



70008

1847 "Post Office" 2d, Sperati's proof on cardboard in a rich and deep blue with very sharp impression. It is worthy of note that the 2d value has the tiny line in the bottom right corner, the secret marking that the Royal Philatelic Society put on the reproductions to tell them apart from the genuine stamps. **An extremely rare and hitherto unrecorded proof, no more than seven proofs are known in a range of colours.** This lot is housed in Sperati's cardboard box of photographic paper from the Lumière brothers.

5'000 - 7'500

1848-59 Post Paid Issue

The currency of the auction is the British pound.





1848-59 Post Paid Issue

1848-59 Post Paid Issue

Earliest Impressions (SG 3-5)

Early Impressions (SG 6-9)

Intermediate Impressions (SG 10-15)

Worn Impressions (SG 16-22)

Latest Impressions (SG 23-25)

70009-70077

70009-70010

70011-70031

70032-70045

70046-70061

70062-70077

Earliest Impressions (SG 3-5)

THE LARGEST KNOWN MULTIPLE

70009



3 80'000 - 100'000

1d orange-vermilion, earliest impression, BLOCK OF SIX, positions 1-6, good to very large all round except bottom left and right, all cancelled by rare blue numeral '1' of Mahebourg and a portion of red London ds applied in transit, some usual toning, extraordinarily fine for such an important and large multiple, exhibition showpiece (SG £108'000 as singles).

On the reverse of the block, we can see the outline of the flap of the original envelope to which it had been affixed, which is therefore not a crease.

This spectacular block in its rich bright shade clearly shows, amongst other characteristics of the earliest impression the 'sticky print' and uneven inking of the beginning period. "The impression is so early that if the paper was yellowish it would undoubtedly classify as the earliest" (Burrus 1968). We now know that several different papers were used at the same time and can confirm without doubt that this block is from the EARLIEST impression.

Arnold Rudge states "After very careful thought and examination I am convinced this block is an Earliest. There is also an amazing DOUBLE PRINT of the design best seen at lower right".

This is the LARGEST KNOWN MULTIPLE of the Earliest impression and of the entire Post Paid issue. An outstanding item of phenomenal importance.

Provenance: Arthur Hind, March 1934 (Lot 249), Maurice Burrus, October 1963 (Lot 32), Hiroyuki Kanai, November 1993 (Lot 6), Tatiana, 2020 (Lot 20040)

Expertise: Signed Herbert Bloch, cert. David Brandon (1997)

ONE OF THE FINEST RECORDED



70010

(*)

5 30'000 - 40'000

2d. deep blue **unused** left marginal with fine to huge margins, deep rich impression, from position 4 on the plate, rich deep colour from the scarce indigo shade, very fine and fresh, a superb stamp (S.G.5, £65'000).

Provenance: Ferrary, April 1923, Sale VI (Lot 346), Dale-Lichtenstein, October 1968 (Lot 5), Hiroyuki Kanai, November 1993 (Lot 27), Tatiana, 2020 (Lot 20042).

Early Impressions (SG 6-9)



70011

⊙

6 8'000 - 12'000

1d. vermilion on bluish paper, early impression, horizontal strip of three, positions 4-5-6, clear to good margins all round, cancelled by numeral "3" of Souillac, small surface scuff on centre stamp, slight offset from an address on reverse, fresh colour, a rare and attractive multiple (SG £27'000 as singles).

Provenance: Dale-Lichtenstein 1970.

Expertise: Cert. David Brandon (1990).



70012

⊙

6 6'000 - 8'000

1d. vermilion, horizontal pair, early impression, position 8-9, good to large margins, used, some usual light toning, very fine for the rare used pair (S.G. 6, £18'000+).

Expertise: Signed Diena, cert. Diena (1961) and R.P.S. (1963).

Provenance: Amundsen & "Dallas".



70013



70014

70013 ☉ 6 3'000 - 4'000

1d. vermilion on greyish paper, early impression, close to good margins, lightly cancelled, "10" double circle numeral (Riviere du Rempart) later Grand Bay. According to J. Petřík, this cancel is NOT KNOWN on the Post Paid issue; possibly a unique item.

Expertise: Cert Diena (1963).

70014 ☉ 6 2'000 - 3'000

1d. vermilion, early impression, position 11, good to large margins, neat "1" numeral of Mahébourg in blue, minor corner crease, very fine with deep colour and scarce with coloured cancel (S.G.6, £9'000).

Provenance: Hiroyuki Kanai, November 1993 (Lot 42). (**Note:** This stamp was once owned by the Royal Philatelic Society of London).

Expertise: Cert. R.P.S. (1926) and B.P.A. (2011).



70015 (*) 7 6'000 - 8'000

1d. orange-vermilion on greyish paper, early Impression, position 11, good to huge margins uneven all round, **UNUSED** without gum; a fresh and attractive example, the 1d unused is extremely rare, a world rarity (S.G.7, £35'000).

Expertise: Cert. B.P.A (2022).



70016



70017

70016 ☉ 7 2'400 - 3'400

1d. orange-vermilion on grey paper, early impressions, position 2, fine used with good to huge margins and neatly cancelled by "14" double circle cancellation of Plaine Magnien Riviere du Rempart; a fine and most attractive example (S.G.7, £8'000).

Expertise: Cert B.P.A (1994).

Provenance: Hiroyuki Kanai, November 1993 (Lot 41).

- 70017 ☉ / 26 7 2'000 - 3'000
 1d. orange-vermilion on greyish, early impression, position 8, large to very large margins, cancelled by light barred circular grid in black, very fine (S.G.7, £8'000).

Expertise: Cert. Peter Holcombe (1989).



70018



70019

- 70018 ☉ 7 1'500 - 2'000
 1d. orange-vermilion on whitish paper, early Impressions, position 9, fine used with good large even margins all round, neatly cancelled by dumb oval of bars; scarce.(S.G.7, £8'000). Cert. David Brandon (2012).

- 70019 ☉ 7 1'200 - 1'500
 1d. orange-vermilion on bluish paper, early impression, pos.6, fine to huge margins (showing portion of neighbour above), target cancel, light filled in thin and corner crease in the margin at top right, a striking example; cert. (RPS (2024) which doesn't mention the thin (S.G. £8'000).



- 70020 △ 7 2'400 - 3'400
 1d. orange-vermilion, early Impression, position 3, huge margins all round, used on large piece of cover front, neatly and centrally cancelled by 5 rings target cancel, showing boxed "PENNY POST" (Kanai IIH-2) and portion of boxed "INLAND" (Kanai IIA-3), a lovely fresh example and very rare. (S.G.7, £8'000+).

Provenance: Maurice Burrus, October 1963 (Lot 133).

Expertise: Cert. David Brandon (2007).

Find a bid form on the **last page** of this catalogue.

**THE ONLY KNOWN COMBINATION OF BOTH VALUES
OF THE EARLY IMPRESSION ON COVER**



70021



7,9

150'000
- 200'000

1d orange-vermilion, early impression, position 9, used in combination with 2d dark blue, early impression, position 2, on cover to Port Louis, light circular numeral "3" of Souillac with clear despatch datestamp SP 7 1854 at left, GPO arrival for the following day, 2d with part sheet margin at top, minor crease in margin, an extraordinary usage and the only known combination of both values of the early impression.

Rate: The 3d rate is the addition of the 2d inland rate between rural towns and the Port Louis delivery (Article 5 of the Ordinance No. 13 of 1846).

Unique and one of the major items of Mauritius. A major showpiece of this issue.

Illustrated on the cover of "Mauritius Post Paid" by J. Petřík.

Note: The only other comparable item is a cover ex Burrus with intermediate 1d and 2d from Souillac DE 18 1855.

Provenance: Dale-Lichtenstein and Hiroyuki Kanai, November 1993 (Lot 46).

This cover was one of the star items in the Liechtenstein collection and was featured in the first Dale-Lichtenstein auction (1968), described as:

"A wonderful combination cover, as fine as it could exist." It realised half the price paid for the Post-office 2d on part cover in the same sale. It realised CHF161'000 in the Kanai auction.

Expertise: Cert. R.P.S. (1968), Bühler (1979) and David Brandon (2007).



70022

*

8 12'000 - 16'000

2d. blue, early impression, position 8, **UNUSED** with large part original gum, good to large even margins all round, lovely sharp crisp impression and excellent colour, an important unused stamp of Mauritius and an important world rarity (S.G.8, £45'000).

Provenance: "Tatiana", April 2020 (20058).

Note: This impression is at least as rare as the earliest in unused condition, showing the slightly "sticky" print.

Expertise: Cert. Alberto Diena (1967) and B.P.A. (1979).



70023



70024



70025

70023

⊙

8 3'000 - 4'000

2d. blue on grey, early Impression, position 10, used with huge margins on three sides, excellent fourth side, centrally cancelled by clear crisp strike of the numeral "2" of Flacq (S.G.8 £10'000).

A superb stamp and a rarity in this quality.

Expertise: Cert. Sismondo (2021).

70024

⊙

8 2'000 - 3'000

2d. blue on bluish, early impression, position 11, neatly stuck by superb central "1" numeral of Mahébourg in blue, four good to large even margins and bright fresh colour, very fine and a stunning example of the coloured cancel (S.G.8, £10'000).

Provenance: Maurice Burrus, October 1963 (Lot 88).

Expertise: Cert. B.P.A. (2011).

70025

⊙

8 400 - 600

2d blue, used with good even margins, some defects, very fine appearance (S.G.8, £10'000).



70026



8 10'000 - 15'000

2d blue, early impression, position 10, just cut into on the left side otherwise clear margins, on 1850 (Jan 18) wrapper from Port Louis "p. B B Greene bound for Cork" to Bordeaux, tied by black grill, crowned GPO ds, landed at Cove and with blue **"COVE / SHIP LETTER"** and "8" ship rate hs on face, reverse with Queenstown and English transits, charged '30' in France with boxed "COLONIES / & C ART 13" accountancy. A rare usage, **the only example seen routed through Ireland.**

Provenance: Stevens (April 1961) and "Emerald".

Expertise: Cert. B.P.A. (1977).



70027



70028

70027



8 var 2'000 - 3'000

2d. blue on bluish, early impression, position 12, showing partial **double impression** at right and foot (outer frame and some letters doubled), light target cancel in black, four clear margins, a fine example of the is very unusual printing error (S.G.8 var, £10'000+).

Provenance: "Chartwell" 2011.

Expertise: Cert. David Brandon (2011).

70028



8a 4'000 - 6'000

2d. blue on greyish paper, early Impressions, position 7, showing the **"PENOE"** error, clear to huge margins on three sides, cancelled by clear central strike of numeral '1' of Mahébourg, a wonderful example of the error (S.G.8a, £20'000).

Provenance: "Adamastor", December, 2017 (80021).

Expertise: Cert R.P.S (1968).



70029

⊙

8a

4'000 - 6'000

2d. blue on grey paper, early Impressions, position 7 showing a wonderful example of the "PENOE" error, large to very large margins, neatly cancelled by ringed numeral "1" of Mahebourg in blue; fresh and attractive (S.G.8a, £20'000).

An exceptional stamp with this variety.

Provenance: Weill.

Expertise: Cert B.P.A. (2022).



70030

⊙

8a

3'000 - 5'000

2d. blue, early impression, positions 7 exhibiting the "PENOE" error, used with clear to mainly wide even margins, attractive sharp impression, lightly cancelled by '1' target cancel in blue, minor oxidation, very rare (S.G. 8a, £20'000).

Provenance: Vikram Chand.

Expertise: Cert. B.P.A. (1979).

ONE OF THE FINEST EARLY IMPRESSIONS KNOWN



70031

⊙

9

3'000 - 4'000

2d. deep blue on thick greyish, early impression, position 1 on the plate, strong colour, large to enormous margins, neat numeral "2" of Flacq, small brown spots on reverse not showing on face, a most attractive and exceptional stamp (S.G. £11'000).

Amongst the most beautiful of all the known Two pence Post Paid.

Provenance: Hind, De Silva, Stevens and Hiroyuki Kanai, November 1993 (Lot 58, Realised CHF7'475).

Intermediate Impressions (SG 10-15)



70032

(*)

10

3'000 - 4'000

1d. vermilion, intermediate impression, position 9, **UNUSED** without gum, good to large even margins, minor rubbing and small thin, otherwise fine and rare (S.G.10, £23'000).

Provenance: Dale-Lichtenstein, Hiroyuki Kanai, November 1993 (Lot 63).

Expertise: Signed Calves.



70033

⊙

10

800 - 1'200

1d bright vermilion, intermediate impression, position 10, very good to large margins, cancelled by a superb strike of the "12" numeral of Grand Savanne, light vertical crease and small thin spot, still a lovely example of this scarce cancel (S.G. £3'250).



70034

⊙

10 var

3'000 - 4'000

1d. vermilion on yellowish paper, intermediate impression, position 12, exhibiting a spectacular pre-printing paper fold, clear to large margins showing the design complete in a very much oversized example, cancelled by double target marks also struck on the white area caused by the variety, a unique showpiece of immense eye appeal, simply spectacular.

Provenance: Hiroyuki Kanai, November 1993 (Lot 67).

Expertise: Cert. BPB (2002).



70035



70036

- | | | | |
|---|---|----|---------------|
| 70035 | ⊙ | 11 | 2'000 - 3'000 |
| 1d. dull vermillion vertical pair on yellowish paper, intermediate impression, positions 9/12, very large to huge margins all round, fine used, neatly cancelled by double ring "2" of Flacq; a very rare multiple (S.G.11, £6'500+). | | | |
| Expertise: Cert B.P.A. (1994). | | | |
| 70036 | ⊙ | 11 | 800 - 1'000 |
| 1d. dull vermillion on bluish paper, intermediate Impression, position 9, good to large even margins all round, lightly cancelled by double ring numeral "2" of Flacq, very fine (S.G.11, £3'500). | | | |
| Expertise: Signed Peter Holcombe. | | | |

THE LARGEST KNOWN BLOCK OF THE POST PAID TWOPENNY



- | | | | |
|--|-----|----|-----------------|
| 70037 | ⊙ ⊞ | 14 | 30'000 - 40'000 |
| 2d. blue on greyish, intermediate impression, in block of six from the top half of the sheet, positions 1-3 + 4-6, each cancelled by black target, clear margins on two sides and just touching on others, tiny marginal thin, minor wrinkle and natural paper flaw in margin only, deep colour and fine impression, must be considered in exceptional quality for the largest of blocks. | | | |
| The largest known block of the Post Paid 2d, unique and a major exhibition item. | | | |
| Provenance: Ferrary, Dale-Lichtenstein, Hiroyuki Kanai, November 1993 (Lot 77). | | | |
| Expertise: Cert. BPA (2015). | | | |



70038

⊙

14

2'000 - 3'000

2d. blue, intermediate Impressions, horizontal pair [11,12], large even margins all around, cancelled by two good strikes of numeric circle obliterator, horizontal pressed crease at foot and small tear in margin above left hand stamp, not affecting the appearance of this very rare multiple (S.G.14, £9'000+).

Provenance: Hiroyuki Kanai, November 1993 (Lot 81).

Expertise: Cert BPA (2022) does not mention tear.



70039

⊙

14

1'500 - 2'000

2d. blue on bluish, intermediate impression, position 4, showing attractive and unusual pre-printing “pli d'accordéon” paper fold running through the crown, light blue strike of the numeral “1” of Mahébourg, clear to very large margins, fine and very scarce example of the printing error (SG £4'500+).



70040



70041

70040

⊙

14

1'000 - 1'500

2d. Blue on bluish paper, intermediate Impression, position 8, large to very margins all around, lovely rich colour and a crisp impression that almost qualifies as “early”, neatly cancelled by concentric circles, a superb and most attractive used example (S.G.14, £4'500).

Expertise: Cert. Peter Holcombe (1992), David Brandon (2008).

70041

⊙

14

800 - 1'200

2d. blue on greyish, intermediate impression, position 3, large to very large even margins and cancelled light numeral “2” of Mahébourg, paper split at left side and minor faults not mentioned by cert. (S.G.14, £4'500).

Provenance: Hiroyuki Kanai, November 1993 (Lot 86).

Expertise: Cert. BPA (2011), signed Pfenninger.



70042

⊙

14, 14a 9'000 - 12'000

2d. blue on bluish, intermediate impression, positions 1/4/7/10, complete vertical sheet marginal row of four including position 7 showing the “PENOE” error on the third stamp, part sheet margins at left and foot, top stamp barely touched on one corner, cancelled light numeral “1”, two tiny pinholes and shallow thinning.

A most remarkable and impressive multiple (SG £22'500 as singles), **exhibition showpiece**.

Provenance: Ferrary, Dale-Lichtenstein, Hiroyuki Kanai, November 1993 (Lot 78, Realised CHF8'625) and “St. Louis”.

Expertise: Cert. David Brandon (2008).

ONE OF THE FINEST RECORDED



70043

☉

14a

6'000 - 8'000

2d. blue on yellowish white paper, intermediate Impression, position 7 illustrating the “PENOE” error, lightly cancelled “1” in circles for Mahebourg in blue, large to very large margins and a scarce stamp (S.G.14a, £9'000).

Expertise: Signed Pfenniger, Cert B.P.A. (2014).



70044



70045

70044

☉

14a

2'000 - 3'000

2d. blue, intermediate Impression, position 7 showing the “PENOE” error, good to large even margins and cancelled by clear strike of numeral ‘1’ of Mahébourg, fine and rare (S.G.14a, £9'000).

Expertise: Cert. B.P.A. (2011).

70045

☉

15

800 - 1'200

2d. light blue on greyish, intermediate impression, position 2, neatly cancelled numeral “1” of Mahébourg in blue, clear to good margins, fine and fresh (S.G.15, £4'000). **Expertise:** Cert. David Brandon (2012).

Worn Impressions (SG 16-22)



70046



70047



70048

70046

☉

16

300 - 400

1d. red on greyish, worn impression, position 3, neatly cancelled by double ring numeral “12” at Grand Savane, good to large margins, fine and scarce cancellation on this issue (S.G.16, £950). Cert. B.P.A. (2011).

70047

☉

16

200 - 300

1d. orange red on yellowish paper, worn impression, position 4, very large to huge even margins all around, lightly struck with boxed “Inland” cancel, a very fine and choice example (S.G.16, £950). Cert. David Brandon (2012).

70048

◎ / 36

16

200 - 300

1d. red on greyish, worn Impressions, position 2, good to large margins all round, neatly cancelled by Plaine Magnien Riviere du Rempart numeral "14", a very attractive example (S.G.16, £950). Signed Pfenninger, Cert. B.P.A. (2022).



70049

△

16

1'500 - 2'000

1d. bright red on grey, worn Impression, horizontal pair, position 11/12, clear to large margins tied to a small fragment to Adelaide (AU), by dumb bar oval cancels in combination with "Britannia" issue 6d. blue, the piece with trivial age marks.

A most attractive and rare usage to an unusual destination, for an 8d. rate cover from the same correspondence see Kanai auction 1993 lot 187.



70050

✉

16

2'000 - 3'000

1d. red on greyish blue, worn impression, position 9, on lithographed prices current entire from Port Louis to Genoa (Italy), via London, stamp fine with good to large margins and tied by neat dumb oval in black, GPO despatch for NO 10 1859 and Genoa 11 DIC on flap, very fine.

A rare single franking to a scarce destination being printed matter.

Expertise: Cert. B.P.A. (2012).



70051



16

1'500 - 2'000

1d. red on yellowish paper, worn impression, vertical pair with fine to huge margins, positions 5/8, cancelled by "12" numeral on 1859 folded letter from "Savane, le 2 mars" to Port Louis, despatch datestamp (wrong date) of Grand Savane on face (partly entered by postmaster in manuscript), MAURITIUS GPO receipt for MR 8 1859 on flap, a rare usage for this office.

Note: See Stevens lot 1036 another pair, horizontal, dated FE 23 1857.

Expertise: Cert. B.P.A. (2014).



70052



17

2'000 - 3'000

1d. red-brown on greyish, worn impression, two singles with good to huge margins, positions 7 and 1, tied to 1859 cover from Port Louis to London by target cancels, MAURITIUS GPO despatch of JU 20 1859 on flap, very fine and a rare cover to a scarce destination. Cert. David Brandon (1996), signed Calves.



70053



70055



70056



70054

- | | | | |
|--|---|----|---------------|
| 70053 | ⊙ | 18 | 300 - 400 |
| 1d. Orange Red on Bluish Paper, worn Impression, position 10, extremely large to huge even margins all around, used with light oval cancel, extremely fine (S.G.18, £900). Cert. David Brandon (2011). | | | |
| 70054 | △ | 18 | 1'500 - 2'000 |
| 1d. deep red-brown shade on bluish, worn impression, full vertical strip of four, positions 3/6/9/12, clear to wide margins all around, used on fragment and tied by dumb oval cancels in black, part French charge mark, good colour and rare multiple. | | | |
| Provenance: Maurice Burrus, October 1963 (lot 139 when a larger piece and dated 8.8.1859), Hiroyuki Kanai, November 1993 (Lot 98). | | | |
| Expertise: Cert. BPA (1995) | | | |
| 70055 | ⊙ | 19 | 800 - 1'000 |
| 1d. red brown on bluish paper, worn Impression, large margins all around neatly cancelled by a clear crisp strike of the double ring "8" for Ville Bague (Pamplemousses South); noted by Petřík as rare; light corner crease not affecting the very fine appearance; rare. | | | |
| Expertise: Signed Richter, Jakubek, Cert R.P.S (2013). | | | |
| 70056 | ⊙ | 19 | 200 - 300 |
| 1d. brownish red on bluish, worn Impression, position 8, large to huge margins, neatly cancelled by crisp sharp strike of the barred oval cancel, very fine. Cert. David Brandon (2012). | | | |



70057



70058

- | | | | |
|--|---|----|-----------|
| 70057 | ⊙ | 20 | 500 - 700 |
| <p>2d. blue, worn impression, position 5, used, good to large uneven margins, cancelled by clear target cancel, showing two pronounced pre-printing paper folds, lovely impression and colour, unusual printing variety illustrating this very attractive “pli d’accordéon”, an exhibition showpiece. Cert. Sergio Sismondo (2002), David Brandon (2002)</p> | | | |
| 70058 | ⊙ | 20 | 400 - 600 |
| <p>2d. Blue on yellowish white paper, worn impression, position 5, large to very large margins all round, lovely fresh colour and paper, light concentric circle cancel, Very Fine (S.G.20, £1'800). Cert. David Brandon (2017).</p> | | | |



- | | | | |
|---|---|-----|---------------|
| 70059 | ⊙ | 20a | 1'000 - 1'500 |
| <p>2d. Blue on bluish paper, worn Impression, position 7 showing the “PENOE” error, large even margins, lightly cancelled “2” in circle of Flaccq, a very fine example of the constant plate variety (S.G.20a, £3'500).
 Expertise: Signed Georg Bühler and Peter Holcombe, Cert. Hunziker (1968).</p> | | | |



70060



70061

- | | | | |
|--|---|----|-----------|
| 70060 | ⊙ | 21 | 300 - 500 |
| <p>2d. grey blue on grey paper, worn impression, position 3, neatly cancelled by numeral “14” cancel of Riviere du Rempart; large to very large margins; fine and most attractive (S.G.21, £1'800). Cert B.P.A. (2018).</p> | | | |
| 70061 | ⊙ | 22 | 300 - 500 |
| <p>2d. light blue on bluish, worn impression, position 10, large to very large margins, cancelled by clear neat black target pmk, small spot in lower margin, very fine (S.G. £1'800).
 Expertise: Cert. Brandon (2012)</p> | | | |

Latest Impressions (SG 23-25)

**THE LARGEST KNOWN MINT MULTIPLE
OF THE ENTIRE POST PAID ISSUE**



70062

* 田

23 30'000 - 40'000

1d. orange red, latest impression, in mint block of six from the lower half of the sheet, positions 7-9 + 10-12, with large part original gum, good to large margins on three sides and just touched at foot, several small faults and position 10 with stain, still in a remarkable state of preservation.

The largest known mint multiple of the entire Post Paid issue and a major showpiece.

Provenance: Dale-Lichtenstein 1969 ("unique"), Kanai 1993 (Lot 126, Realised CHF18'400), Gross 2008.



70063



70064



70065



70066

- | | | | |
|---|---|----|---------------|
| 70063 | ⊙ | 23 | 800 - 1'200 |
| <p>1d. red on grey, latest impression, left sheet marginal vertical pair with large to very large margins on the others sides, positions 1/4, showing unusual and very rare edge of plate marking, with black boxed "INLAND" cancel, slight crease and shallow thinning, an exceptional and eye-catching multiple (S.G.23, £1'600).</p> <p>Expertise: Cert. B.P.A. (2011).</p> | | | |
| 70064 | ⊙ | 23 | 300 - 500 |
| <p>1d. red-brown pair on yellowish paper, latest Impression, positions 7-8, good to large margins all round, neatly cancelled by two clear strikes of the "PAID" in circle pmks; a rare multiple (S.G.23, £1'600).</p> <p>Expertise: Cert David Brandon (1996).</p> | | | |
| 70065 | ⊙ | 23 | 200 - 300 |
| <p>1d. orange-red on yellowish paper, latest Impression, large to huge margins, neatly cancelled by clear strike of the "PAID" in circle pmk, very fine to superb, showpiece (S.G.23, £800).</p> <p>Expertise: Signed Richter, W.Engel, Cert. David Brandon (2014).</p> | | | |
| 70066 | △ | 23 | 1'000 - 1'500 |
| <p>1d. red on yellowish, latest impression, vertical strip of four from a complete vertical row with positions 1/4/7/10, on fragment cancelled by dumb oval obliterators, lower stamp with dramatic and substantial pre-printing paper fold resulting in the stamp being fully 4 mm taller than normal, archive fold in margin between second and third stamp, extremely unusual multiple, interesting showpiece.</p> | | | |



70067



23

2'000 - 3'000

1d. red on bluish, latest impression, four singles, margins ranging from clear to exceptional with two showing portions of adjoining stamps at top, positions 12, 6, 11 and 8, each tied by barred oval hs on folded 1860 entire letter from Port Louis to Granville, France, entering the country of destination with red cds and '8' charge on front, reverse with 'GPO/FE6 1860/MAURITIUS' and various French cds's, a delightful and most desirable usage. Ex: Maurice Burrus, October 1963 (Lot 143), Hiroyuki Kanai, November 1993 (Lot 131) and Vikram Chand. Cert. B.P.A. (1994).



70068



23

1'000 - 1'500

1d. red on bluish paper, latest Impression, position 3, on 1859 Printed Circular to Port Louis, neatly tied by dumb oval of bars cancel, the reverse showing G.P.O Mauritius c.d.s.; a rare usage. Ex. Kanai. Cert B.P.A (1994).



70069

(✉)

23

3'000 - 4'000

1d. red on greyish, latest impression, vertical sheet marginal strip of four, positions 2/5/8/11, large to enormous margins, sheet margins at top and base, tied to large part of cover front with upper back flap from Port Louis to Nantes, France, tied by neat strikes of the target cancel, part '8' décimes charge and red Suez entry cds at bottom, with crown 'MAURITIUS/AU8 1859/GPO' ds, French transits and receiving cds's, undoubtedly one of the finest usages of Post Paid 1d strip of four to have survived, a delightful exhibition showpiece.

Provenance: Rothschild, Schindler, Chand.

Expertise: Certs. A. Diena (1962, where the cover shows the lower part before having been detached and was heavily creased horizontally), G. Bolaffi (1963, in his current state as a part cover), Mohrmann (1964), B.P.A. (1995), Richter (1996).



70070



70071



70072

70070

(*)

24

2'000 - 3'000

1d. red-brown on bluish, latest impression, position 2, **UNUSED** with good colour, large even margins, very fine and scarce unused (S.G.24, £6'500).

Expertise: Cert. B.P.A. (2011).

70071

⊙

24

200 - 300

1d. red-brown on greyish, latest impression, position 7, large to very even margins, neatly cancelled by clear strike of the circular PAID pmk in black, shallow thinning and trace of creasing, excellent appearance (SG £800). Cert. BPA (2007).

70072

⊙

24

200 - 300

1d. orange-red on yellowish paper, latest Impression, position 9, large margins, showing a stronger impression than most other "latest", neatly cancelled by bold barred oval cancel leaving a clear profile, tiny thin speck in the top right margin, still of wonderful appearance (S.G.24, £800). Signed A.Diena.



70073



24

2'000 - 3'000

1d. red-brown on bluish paper, latest impression, two single from positions 5 and 8, each with large to very large margins, and in combination with "Britannia" 6d., each centrally cancelled by "Paid" in circle, on 1860 (Mar 8) entire letter from Port Louis with contents from Mauritius Commercial bank to Calcutta (India), originally endorsed in error "*p Overland via Marseilles*" (deleted) and "*p str to Aden*" (with Aden also apparently deleted); filing creases affecting 1d. [8] and 6d. and some slight soiling, a very rare franking with this combination of issues and paying 8 penny rate.

Provenance: Dale Lichtenstein 1968, "Chartwell".

Expertise: Cert R.P.S. (1968).



70074



24

1'500 - 2'000

1d. red-brown, latest impression, strip of three and single, all with good to very large margins, on 1860 entire to Granville, "*Via Suez & Marseille*", each neatly cancelled by dumb oval bars cancels, the front handstamped "8", the reverse with G.P.O Mauritius c.ds.; a rare cover.

Provenance: Burrus.



70075



24

1'500 - 2'000

1d. red-brown on bluish, latest impression, position 4, large to very large margined example, cancelled by target postmark and paying the 1d circular rate on October the 1st, 1859 printed matter from Port Louis to Paris, France, with red Suez entry cds in France below, addressee's wrapper missing, with manuscript annotation of the receipt indicating the sender (the representative in Mauritius of the Comptoir National D'Escompte de la Ville de Paris) and the date of the circular, this also tying the franking, a very rare usage of this rate to a destination overseas, **one of only 6 known** Ex: Vikram Chand and "Tatiana". Cert. Peter Holcombe (1989), David Brandon (2007).

Bidding Steps

50-100 → 5
 100-200 → 10
 200-500 → 20

500-1000 → 50
 1'000-2'000 → 100
 2'000-5'000 → 200
 5'000-10'000 → 500

All bids in British pounds

10'000-20'000 → 1'000
 20'000-50'000 → 2'000
 50'000-100'000 → 5'000
 100'000-200'000 → 10'000

Bids between these steps will be adjusted accordingly to the next higher bid step.



70076



25

800 - 1'200

2d. blue, latest Impression, position 5, good to large margins on 1857 (Jan) soldier's envelope from Port Louis to Mahebourg "In Care Of John Newgate, Corp of 5th Fusilier, neatly cancelled by concentric ring cancellation, the cover with some soiling throughout, an attractive usage.

Expertise: Signed A.Diena, W.Balasse.

Provenance: Lars Amundsen.



70077



25a

3'000 - 4'000

2d. blue, latest Impression, position 7 showing the "PENOE" printing error, tied by target "6" of Poudre d'Or, on cover to Port Louis with Poudre d'Or boxed cachet, some staining and silverfish damage, according to Petřík "Extremely rare cancel"; a most desirable showpiece (S.G.25a, from £11'250 as single on cover).

Expertise: Cert Diena (1963).

Provenance: Burrus and Kanai.

1858-62 Britannia Issues



1858-62 Britannia Issues (SG 26-35)



70078



70079

70078

P

7'000 - 10'000

1858-62 Master die proof in black on sunken card with void tablet, without country, very fine and very rare.

One of the most important Perkins, Bacon die proofs not only for Mauritius but for Barbados and Trinidad as well.

Provenance: Hurlock, Sir John Mariott (realised £13'800 in 2001).

70079

P

1'200 - 1'500

1858-62 Undenominated die proof in black on India paper affixed to card (36x40mm. with chamfered corners); a few light fox marks with a couple just affecting the design, however an attractive and rare proof of this beautiful design.

Provenance: L.U.G. Tripp, May 1948, Chartwell 2011.



70080



70081

70080

(*)

26

800 - 1'500

1858, undenominated Britannia issue, imperforate, no watermark, surcharge four-pence (type 4), unused with wide margins. Attractive single and a scarce example of the surcharged value that was locally overprinted and available only for a short time, ex Cramer, Kanai, with certificate RPS 1958.

70081

⊙

26

400 - 800

1858, undenominated Britannia issue, imperforate, no watermark, surcharge four-pence (type 4), used pair with wide and somewhat irregular margins, attractively cancelled with concentric circles obliterator, ex. Cramer, Kanai, with certificate BPA 1994.



70082



70083

- | | | | |
|---|----------|----|--------------------|
| 70082 | ☉ | 26 | 150 - 200 |
| 1858-62 "Four Pence" (type 4) green, very fine "used" with the merest trace of a cancel giving a fresh unused appearance with strong colour; fine and scarce (S.G.26, £450). Cert R.P.S. (1983). | | | |
| 70083 | * | 27 | 100 - 150 |
| 1858-62 Un-denominated Issue (4d.) green, very fine mint example, large margins all round, large part original gum, a wonderfully fresh example (S.G.27, £475). Cert R.P.S. (1980). | | | |
| 70084 | ✉ / 54 | 27 | 700 - 1'000 |
| 1858-62 4d. green, with good to large balanced margins, on 1859 entire letter from Port Louis to Marseille (France), cancelled by dumb oval of bars, hand stamped "8", the reverse showing G.P.O Mauritius d.s; fine and scarce.
Expertise: Cert. B.P.A (2007). | | | |
| 70085 | * 田 / 54 | 28 | 400 - 600 |
| 1858-62 Un-denominated Issue (6d.) vermilion, marginal blocks of six and eight, originally forming an irregular block of 15 from the lower left of the sheet, large part original gum, the block of 8 with some staining at lower right though still a very fresh and attractive reconstructed block and very rare (S.G.28, £1'050+). | | | |

ONE OF THE LARGEST RECORDED MULTIPLES



- | | | | |
|--|-------|----|----------------------|
| 70086 | (*) 田 | 29 | 2'400 - 3'000 |
| 1858-62 Un-denominated Issue (9d.) dull magenta marginal block of twelve (4x3) from the left of the sheet, unused without gum as usually found, lovely deep fresh colour (S.G.29, £10'800 as singles).
A rare and stunning multiple of this lovely stamp, and surely one of the largest recorded multiples.
Provenance: Maurice Burrus, October 1963 (Lot 239), Chartwell 2011. | | | |



70087

(*) 田

29

500 - 800

1858-62 Un-denominated Issue (9d.) dull magenta marginal block of four from the right of the sheet, unused without gum as usually found, lovely deep fresh colour. A rare and stunning multiple of this lovely stamp (S.G.29, £2'700 as singles).



70088

(*)

29

200 - 300

1858-62 Un-denominated Issue (9d.) dull magenta pair, unused without gum as usually found, close to large margins, very fine with lovely deep fresh colour.



70089

✉

29

2'000 - 2'600

1858-62 9d magenta, good to large margins, on 1860 (5 Apr.) envelope from Grand Bay to London, tied by concentric circles and showing "1" crayon colonial credit, on reverse, fine Type D2 framed despatch d.s. of "Grand Bay/5.AP.60", extremely rare.

One of two recorded examples from this office.

Provenance: Dale, Schindler, Hiroyuki Kanai (November 1993 lot 312) and Marion.

Expertise: Cert. B.P.A. (1995).



70090



29a

2'600 - 3'000

1858-62 (9d) dull magenta re-issued as 1d. with good to very large margins, on 1863 (5 Jan.) envelope from "Pte. John Smith No. 1019 No. 9 Company" to England, countersigned by the Commanding Officer, neatly cancelled with "B53" duplex, Harrogate arrival c.d.s. (10.2) on reverse; the envelope with a light vertical fold clear of the adhesive, and other small imperfections.

A very rare and important soldier's rate franking. One of only two covers known using the 1d. dull magenta for the soldier's letter rate. Cert Holcombe (1990).

Provenance: Wren and Gerald Sattin.

Expertise: Cert Holcombe (1990).

Note: 2nd. Battalion H.M. 24th. Regiment embarked at Cork, Ireland for Mauritius on 12th. March 1860 where it remained for nearly six years The Britannia stamp without face value was first issued as a 9d. stamp in 1858. It was replaced in 1860 by a stamp showing the money value and the balance of the (9d.) value were placed in store. These were re-issued as stamps with a value of 1d. in November 1862 during a brief period of shortage of the current 1d. stamp.

70091



30

200 - 300

1890 "LPE/1890" red overprints on remainders of the two unissued "Britannia" stamps in red-brown and blue blocks of four sold as souvenirs to raise funds for the 1890 London Philatelic exhibition; fresh and attractive, although 2700 in each colour were prepared, we cannot recall handling any examples in over 25 years!



70092



31

3'000 - 4'000

1858-62 Issue (no value) blue with "Ormond Hill" cancelled handstamp, pos.6 from the vertical block of six, just clear to small margins and unused without gum; 3mm scissor-cut at foot, otherwise sound and very rare, **only 3 examples recorded** (S.G. £13'000).

Provenance: Peter Jaffe.

Expertise: Cert. David Brandon (1997).



70093



70094



70095



70097

70093

P

32

200 - 300

1859-61 6d. plate proof in black on stout wove paper, good margins on all sides, fine.

70094

*

32

200 - 300

1859-61 6d. blue, large margins all round, full original gum and displaying superb fresh colour, a rare stamp in this exceptional quality and certainly one of the finest we have seen (S.G.32, £900). Signed Roumet.

70095

*

32

200 - 300

1859-61 6d. blue, fine mint with large part original gum, large margins, fresh and attractive (S.G.32, £900).



70096

⊙

32

7'000 - 10'000

1859-61 Britannia Issue 6d. blue, very large balanced margins, showing a crisp part strike of the Perkins Bacon "CANCELLED" handstamp, pos.2 from the single block of six that was originally presented to Ormond Hill in 1861, a superb example and of this great rarity (S.G. £13'000).

Provenance: Peter Jaffe.

Expertise: Cert B.P.A. (2024).

70097

⊙

32

200 - 300

1858-62 6d. Blue, large part og, four large margins, attractive colour, Very Fine.

70098

No Lot



70099

⊙

33

150 - 200

1858-62 6d slate, top left corner sheet marginal pair, used, a wonderful positional item.

You can view our catalogues and bid during the auction
via our website, www.davidfeldman.com



70001



70002



70084



70104



70109



70105



70085



70110ex1



70100



70101

70100 * 34 1'000 - 1'500

1859-61 1s vermilion, good margins all round, very fine mint with large part original gum, a wonderfully fresh example (S.G.£3'250).

70101 (*) 34 300 - 500

1859-61 Britannia 1s vermilion, fine to good margins, unused, fine and very scarce and often found without gum (S.G. £3'250).



70102 © 34 7'000 - 10'000

1858-62 Britannia Issue 1/- vermilion, very large balanced margins, showing a crisp part strike of the Perkins Bacon "CANCELLED" handstamp [6], taken from the single block of six that was originally presented to Ormond Hill in 1861, a superb example and the finest of the five recorded examples (S.G.34, £11'000). **A great rarity.**




Provenance: Peter Jaffe.

Expertise: Cert. David Brandon (2009).



70103 ✉ 34 1'500 - 2'000

1858-62 1s vermilion, block of four, touched to clear margins, on 1861 (Nov 6.) large quadruple rate envelope ex "Cursetjee" correspondence to Aden, marked "pr Norna", rated 2/-, each cancelled "B53", with, on reverse, despatch and Aden Steamer Point (18.11) datestamps, some soiling though a fine looking cover. Copy of Cert B.P.A. (2001).

Lot n°	Symbol(s) / Photo page	Cat. n°	Estimate (€)
70104	✉ / 54	34	600 - 800
	1858-62 1s vermillion, close to very large margins, in combination with 1862 4d. carmine with wing-margin, on 1862 (5 Apr.) double rate envelope to Bordeaux, marked "Suez & Marseille", both cancelled by "B53" obliterator, showing red unframed "p.d." and Marseilles entry c.d.s. with, on reverse, despatch and arrival date stamps, an attractive combination usage. Ex:Robert Marion. Cert. R.P.S. (2013).		
70105	✉ / 54	34	400 - 600
	1858-62 1s vermillion, close to large margins, on 1859 entire to Calcutta (India),lightly cancelled by dumb oval of bars, the reverse showing G.P.O Mauritius c.d.s. and boxed Calcutta Ship Letter; fine. Cert B.P.A (1976).		
			
70106	*	35	300 - 400
	1858-62 1s yellow green pair, fine mint with large part OG, large margins all round, fresh and attractive (S.G.35, £1'300).		
			
70107	*	35	150 - 200
	1858-62 1/- yellow-green marginal example from the right of the sheet, very fine mint with large part OG, a wonderfully fresh example.(S.G.35, £650).		
			
70108	⊙	35	80 - 120
	1858-62 1/- yellow-green, strip of three with clear to very large margins, cancelled "B53" several times, a rare multiple.(S.G.35, £480+).		
	Provenance: Jaffe.		
70109	✉ / 54	35	700 - 1'000
	1858-62 4d. green pair with good margins, on 1854 Part wrapper ex the "Billingsley" correspondence to Cape Town, marked "P Clasmerden", rated "1/-", tied by dumb oval cancels and showing, on reverse, despatch and arrival date stamps.		
	Provenance: Dale-Lichtenstein, Tomasini and Jaffé.		
	Expertise: Cert B.P.A. (1980).		
70110	F / 54		100 - 150
	Forgeries: 1863 Spiro forgeries, pair of complete sheets with target cancels, with 6d slate pin perf. and (no value) blue imperf., very scarce intact sheets.		

Lapirot, Dardenne & Sherwin Issues

"Sabette"



to



1859 Lapirot Issue	70111-70118
Early Impressions (SG 36-37)	70111-70112
Intermediate Impressions (SG 38)	70113-70115
Worn Impressions (SG 39)	70116-70118
1859 Sherwin Issue (SG 40)	70119-70124
1859 Dardenne Issue (SG 41-44)	70125-70151

de

1859 Lapirot Issue

Early Impressions (SG 36-37)



70111



70112

70111 ☉ 36 1'500 - 2'000

2d. dark blue on bluish paper, early impression, large to huge margins all round, showing intense colour and impression, neatly cancelled by a central strike of the "14" double-circle cancel ("Riviere du Rempart"), faint corner crease entirely in the top right margin, otherwise extremely fine, an outstanding used example (S.G.36, £4'500)

Provenance: Maurice Burrus, October 1963 (Lot 154), "Adamastor", December, 2017 (80054), "Tatiana".

Expertise: Cert. B.P.A. (1978).

70112 ☉ 37 800 - 1'200

2d. blue on grey paper, early impressions, position 8, good to large uneven margins, fine used, neatly cancelled by "16" numeral of Easter Suburb, scarce. (S.G.36, £4'500). Signed Peter Holcombe, Cert B.P.A. (2018).

Intermediate Impressions (SG 38)

70113 ✉ / 70 37 1'500 - 2'000

2d. blue, horizontal pair, early impression, positions 9-10, touched to huge margins, on 1859 cover to France tied by dumb ovals in black, GPO MAURITIUS despatch for JU 17 1859 on reverse, charged "8" décimes in France, scarce. Cert. David Brandon (2008).



70114 ☉ 38 500 - 800

2d. blue, intermediate impression, position 11, large to enormous uneven margins and neat cancelled by barred oval cancel in black, extremely fine (SG £1'400).

Expertise: Cert. B.P.A. (2014).

70115 ✉ / 70 38+39 2'000 - 3'000

2d blue, intermediate impression, position 3, in combination with 2d blue, worn impression, position 9, on 1859 folded letter sheet from Port Louis to France "via Suez", cancelled by black targets, MAURITIUS GPO despatch for AU 8 1859 on flap, faint crease crosses stamps, rare.

Expertise: Cert. R.P.S. (2009).

Worn Impressions (SG 39)



70116

70116

⊙

2d. blue, strip of three, worn impression, positions 5-6-7, clear to enormous margins and neatly cancelled by three strike of the circular PAID pmk, part French TPO cds in red in top margin, two tiny pinholes, an exceptionally rare used multiple.

Provenance: "Chartwell".

Expertise: Signed W H C(olson).

70117

70117

⊙

2d. blue, worn impression, position 3, with sheet margin at top, otherwise very large to huge even margins, crisp barred oval cancel, exceptionally fine (SG £900)

Expertise: Signed Knopke.

39

700 - 1'000

70118

(✉) / 70

2d. blue, worn impression horizontal pair, positions 1-2, used on large part cover front, sent "via Suez & Marseille" to Amsterdam, each neatly cancelled by dumb oval cancel; the piece having been folded numerous times (one just touching the lower right corner; otherwise fine. Cert B.P.A. (2023).

39

600 - 900

1859 Sherwin Issue (SG 40)



70119

(*)

1859 Sherwin 2d deep blue, unused, just touched at left to clear margins, from position 11 on the plate, small repair at lower left, **one of only eight examples recorded of which one is in the Royal Collection, one of the rarest classic stamps in the world** (S.G.40, £225'000).

Provenance: Schindler (1996), "Tatiana" (2020).

Expertise: Cert. Brandon (2005).

40 20'000 - 30'000



70120 ☉ 40 7'000 - 8'000

2d. deep blue on bluish vertical pair, positions 9/12, close to large margins, neatly cancelled by individual strikes of dumb barred oval, which leave the portrait largely clear on the upper stamp, trivial blemishes mentioned only for accuracy (tiny ink mark between and light gum staining) though an outstanding pair of this classic rarity, of which few sound pairs exist (S.G.40, £16'000+).

Provenance: Amundsen, Hiroyuki Kanai, November 1993 (Lot 208).

Expertise: Cert R.P.S (1941).



70121



70122



70123

70121 ☉ 40 4'000 - 5'000

2d. blue, from position 1 on the plate, large even margins and light barred oval cancel, extremely fine and rare in this quality superlative quality (SG £8'000).

Provenance: "A.P.", Tripp and Kanai (Lot 209, Realised CHF8'000).

Expertise: Cert. RPS (1948) and Brandon (2009).

70122 ☉ 40 3'000 - 4'000

2d. blue on bluish paper, position 6, a superb used example with very large and balanced margins all around (a most unusual occurrence on this issue), spectacular colour in the deepest shade possible, and showing a proof like impression, neatly cancelled by barred oval cancel, extremely fine and very difficult to find a better example (S.G.40, £8'000).

Expertise: Signed A.Diena, Cert. David Brandon (2012).

70123 ☉ 40 2'000 - 3'000

2d. deep blue on bluish paper, position 5, a superb used example with large margins all round and showing lovely colour and impression, neatly cancelled by "PAID" in circle; very fine and exceptionally rare (S.G.40, £8'000).

Provenance: Ferrary.

Expertise: Signed Peter Holcombe, Cert B.P.A. (1968).



70124

40F

400 - 500

1900 Sherwin coloured autotype illustrations of the (unissued) 1d vermilion and the 2d blue, removed from the original page from the RPSL handbook on British Africa published in 1900, very scarce and ideal for plating the 2d, see footnote under SG40 in the SG catalogue.

1859 Dardenne Issue (SG 41-44)



70125

⊙

41a

700 - 1'000

1d. red, large to huge margins, showing bright colour, lightly struck by "Paid" in circle cancels, an extremely fine used example (S.G.41a, £1800).

Expertise: Cert. David Brandon (2012),

Provenance: Arthur Hind, Maurice Burrus, October 1963 (Lot 206), Hiroyuki Kanai, November 1993 (Lot 232).

Note: Although there was large spacing between stamps, single examples are rarely found with margins this wide.



70126



70127

70126 ☉ 41a 200 - 300

1d. red with variety “egg over PENNY”, four even margins, cancelled neat numeral “4” in blue, fine and attractive and rare plate flaw (S.G.41a, £1’800). Ex: Kanai 1993. Cert. David Brandon (2012).

70127 ☉ 41a 200 - 300

1d. red on laid paper, a fine used example with huge margins all round neatly cancelled by dumb oval of bars, a very fresh and attractive example (S.G.41a, £1’800).



70128 (*) 42 4’000 - 5’000

1d.dull vermilion on laid paper, **unused** without gum, close to good margins, showing superb fresh colour, a true rarity unused (S.G.42, £10’000).

Expertise: Signed A.Brun.



70129



70130



70131

70129 ☉ 42 300 - 500

1d. vermilion, large to huge margins all around, showing strong colour and crisp impression, neatly cancelled by barred oval cancel, extremely fine to superb (S.G. £1’500). Cert R.P.S. (2011).

70130 ☉ 42 200 - 300

1d. dull vermilion, large to very large even margins all around, light barred oval cancel, very fine and a superb appearance (SG £1’500.). Cert. David Brandon (2008).

70131 ☉ 42 200 - 300

1d.deep vermilion, superbly used, neatly cancelled by “PAID” in circle; huge margins all round showing magnificent rich colour (S.G.42, £1’500). Cert. Enzo Diena (1979).



70132



42

4'000 - 6'000

1d. dull vermillion, large to huge margins, light barred oval cancel, on merchant's cover from Port Louis to France by the vessel "Salsette" (last voyage), via Suez, MAURITUS GPO despatch for MR 8 1860 on flap, most likely sent as printed matter, very fine.

An extremely rare usage with only 3 single frankings known (two printed matters and one soldier cover).

Note: See Steven lot 1132 for a similar item.

Expertise: Cert. B.P.A. (2012).

Feldman
INTERNATIONAL AUCTIONS SINCE 1967

SMALL OBJECTS OF GREAT VALUE

Whether they have financial or sentimental significance, we care for your treasures as much as you do.

David Feldman SA is proud to partner with its new sister company, Feldman International Auctions (FIA), to combine fresh innovation with decades of experience.

We are excited to announce a significant auction of coins, watches, jewellery and *objets d'art* at the Beau-Rivage Hotel on December 1, 2024. Additional consignments welcome!

Contact us!

www.feldmanauctions.com



A KEY SHOWPIECE OF THE DARDENNE ISSUE



70133



42 + 43ab 20'000 - 30'000

1859 Dardenne 1d red and 2d blue used together on cover to France "via Aden" tied by barred ovals in black, French V. SUEZ entry, charged "8" in France, MAURITIUS GPO despatch for FE 7 1860 on reverse, 2d with large margins and clearly showing the "feather" retouch below TWO variety.

This is the finer of the two recorded covers with singles of each value and one of the major Dardenne items.

Provenance: Hiroyuki Kanai, November 1993 (Lot 272, Realised CHF41'400).

Expertise: Cert. B.P.A. (2015).



70134



70135

70134 ☉ 43 600 - 800

2d. slate-blue, used vertical pair, positions 40/46, tied to fragment by two complete strikes of the barred oval cancellation, good to large uneven margins, showing retouch in right margin; very fine and scarce (S.G.43, £2'800).

Provenance: Hind, June 1934 (Lot 419), Dale Lichtenstein, March 1970 (Lot 138), Kanai, November 1993 (Lot 277), Schindler, March 1996 "Tatiana", June 2020.

Expertise: Cert. B.P.A. (1995).

70135 ☉ 43 300 - 500

2d. Slate Blue, position 59, a fine used example showing "Line Flaw", good to huge margins, and showing lovely rich colour, neatly cancelled by "Paid" in circle, corner crease at lower left confined to the margin, still very fine.

Provenance: Hiroyuki Kanai, November 1993 (Lot 259).

Expertise: Cert. David Brandon (2012).



70136



70137

70136 ☉ 43 200 - 300

2d. slate blue, good to large margins, position 38, fine used with clear barred oval, lovely fresh colour (S.G.43, £1'400). Signed Grobe, Cert B.P.A. (1998).

70137 ☉ 43a 200 - 300

2d. blue, bright fresh shade, fine to huge margins, extremely neat barred oval cancel, very fine (S.G.43a, £1'100). Cert. David Brandon (2009).

The currency of the auction is the British pound.





70138



43a

3'000 - 5'000

2d. bright blue, two singles with clear to huge margins, from positions 18 & 4, on 1860 cover from Port Louis to Réunion, cancelled by dumb ovals in black, GPO MAURITIUS despatch for MR 23 1860 on flap, St. Denis arrival 29 Mars, and showing framed "M & I" (Mauritius and India) hs, fresh and attractive. **A rare usage.**

Provenance: Chartwell.

Expertise: Cert. B.P.A. (2012).



70139



43a

2'000 - 3'000

2d. blue pair on laid paper, with huge margins, showing traces of adjoining impressions at foot, on 1860 (Mar 5) entire from Port Louis "Via Marseilles" to Bordeaux, cancelled by dumb oval of bars, the reverse showing various transit marks; a very fine and most attractive usage; very rare with stamps showing such large margins.

Provenance: Maurice Burrus, October 1963 (Lot 221), Vikram Chand.

Expertise: Cert. David Brandon (2007).



70140



70141

- 70140** ☉ 44 500 - 700
 2d. pale blue horizontal pair showing “NIE” letters of the papermaker’s watermark, large margins and light barred oval cancels, extremely fine (SG £1’900 as singles). Ex: Dale Lichtenstein 1970, lot 136. Cert. David Brandon (1986).

- 70141** ☉ 44 200 - 300
 2d. pale blue, hint of possible retouch below value (not the “feather” variety), good to large margins, neat barred oval cancel, fine (SG £950).



70142



70143

- 70142** ☉ 44 200 - 300
 2d. pale blue, with litho ring flaw at upper right, fine to huge margins, light barred oval cancel, very fine (SG £950). Cert. David Brandon (2008).

- 70143** ☉ 44 200 - 300
 2d pale blue with large to enormous margins and neat barred oval in black, fresh and very fine (SG £950). Signed A. Diena and Bloch.

- 70144** △ / 70 44 2’000 - 3’000
 1859 Dardenne 2d. pale blue pair, **left stamp with re-touch on nose**, used on large piece of entire to France, cancelled by mute ovals, the pair very fresh and most attractive. Cert B.P.A (2011).



70145



70146

- 70145** ☉ 44 var 300 - 500
 1859 Dardenne 2d pale blue, clearly showing the “cut transfer” variety (lower left corner truncated), plus litho ring flaw at lower right, good to very large margins, light barred oval cancel, very fine and rare.

- 70146** ☉ 44 var 200 - 300
 2d. pale blue, with “cut transfer” variety (lower left corner truncated), lightly cancelled with fine to large margins, fine and rare. Cert. David Brandon (2005).



70147



70148

70147

⊙

44a

400 - 600

2d. pale blue, the "major retouch" to neck variety, lightly cancelled with good to large margins, very fine and rare (S.G.44a, £2'000). Cert. R.P.S. (1942).

70148

⊙

44a

400 - 600

2d. pale blue on laid paper, position 36, with heavy retouch on neck, a good used example with large margins and rich colour; fine (S.G.44a, £2'000).



70149



70151

70149

⊙

44b

300 - 500

2d. pale blue, with "feather" retouch variety below TWO, close to large margins, neat barred oval cancel, fine and fresh, a rare variety (SG £1'200). Cert. Peter Holcombe (1995), reverse signed with Champ guarantee.

THE "FEATHER" VARIETY



70150

△

44b

600 - 900

2d. pale blue, positions 51-52, used pair on a fragment with just clear to very large margins, tied by two strikes of the "PAID" circle cancel, some minor creasing, a very fine pair with both examples showing retouched below the TWO and a dramatic line flaw in right sheet marginal, a wonderful showpiece (SG £2'400+). Ex: Dale-Lichtenstein, Kanai and Schindler. Cert. B.P.A. (1995).

70151

⊙

44var

200 - 300

2d. pale blue on laid paper, position 34, a good used example, showing printing flaws with three typical colour dots, fresh and an attractive plate error.

You may bid live by Internet at www.davidfeldman.com

Later Issues



1860-72 De La Rue Issues (SG 46-72)	70152-70188
1876-78 Surcharges (SG 76-91)	70189-70204
1879-80 De La Rue Watermark CC (SG 92-100)	70205-70243
1883-94 De La Rue Watermark CA (SG 101-111)	70244-70249
1883-91 Surcharges, Arms & Jubilee Issues (SG 112-35, 137)	70250-70285
1899 Birth Bicentenary of la Bourdonnais (SG 136)	70286-70301
1900-05 Arms Issue (SG 138-155)	70302-70350
Later Issues	70351-70402
Express Delivery Stamps	70403-70427
Mauritius Used in Seychelles (B64)	70428-70432
Collections	70433-70436



70113



70118



70115



70144



70154



70160



70161



70163

1860-72 De La Rue Issues (SG 46-72)



70152



70153



70156

- | | | | |
|--------------|--|-------|------------------|
| 70152 | P | 46 | 300 - 500 |
| | 1860-63 1d. purple-brown, a lower left corner pair of imprimaturs with part interpanneau margin at left and showing guide cross at foot, on gummed unwatermarked paper, fine. Ex: Robert Marion, November 2013 (Lot 4130). | | |
| 70153 | * | 46 | 100 - 150 |
| | 1860-63 1d. purple-brown, large part OG, typical centring to left and remarkably fresh and fine for this stamp, very scarce unused (S.G.46, £425). | | |
| 70154 | ✉ / 70 | 46 | 400 - 600 |
| | 1860-63 1d. purple-brown (top overlapping right edge of envelope), on 1860 (Jul 7) envelope sent at the concessionary rate to the UK, cancelled by concentric circle cancel, endorsed "From Pte. Thomas Tandy 2nd Battn. 24 Regt No 9 Compy" and countersigned by his commanding officer, reverse with Mauritius GPO despatch, Worcester and Upton on Severn arrival cds, minor soiling, scarce Soldier's cover. | | |
| 70155 | ** * ⊕ | 46-51 | 500 - 800 |
| | 1860-80 valuable mint selection on stock cards, including 1860 1d. purple-brown to 9d. dull purple overprinted "Specimen", 6d slate and 1/- buff pairs, 1863-72 values to 5/- in mint multiples, including 1d. block of 12, 3d. block of 8, 1/- plate block of 12, 5/- marginal block of 4, 1878 surcharges with values to 2r 50c. 1879-80 odd values to 2r. 50c.; generally fresh and fine mint. | | |
| 70156 | P | 47 | 300 - 500 |
| | 1860-63 2d. blue, a lower left corner pair of imprimaturs with part interpanneau margin at left and showing guide cross at foot, on gummed unwatermarked paper, fine. Ex: Robert Marion, November 2013 (Lot 4131). | | |



- | | | | |
|--------------|--|----|------------------|
| 70157 | P | 47 | 200 - 300 |
| | 2d. die proof in black on glazed card (92x60mm.) marked "After Striking" in pencil manuscript and dated "15/11/59", additionally marked 1/146. fine. | | |



Lot n°	Symbol(s)	Cat. n°	Estimate (€)
70158	P	70158	
70158	P	47	200 - 300
2d. die proof (value tablet blanked out) in black on glazed card (92x60mm.) dated "15/9/59". fine.			
70159	P	70159	
70159	P	47	200 - 300
2d. die proof in black on glazed card (92x60mm.) dated "3/10/59". fine.			
70160	✉ / 70	48	2'000 - 3'000
1s deep green, in combination with 1860 4d. rose, on 1863 (6 Jan.) envelope to Creon, France both clearly tied by "B53" obliterator, showing red unframed "p.d" and Marseilles entry datestamp with, on reverse, blue despatch, Bordeaux and arrival datestamps, a rare mixed issue franking. Ex: Marion. Signed Peter Holcombe.			
70161	✉ / 70	48	600 - 900
1860-63 4d. rose, on 1860 (Apr 7) outer wrapper to Nantes, France, endorsed "Suez et Marseilles", tied by dumb oval of bars used on the first day of issue , the front showing "Pays etr. Y.Suez/AMB.D" French entry cds alongside MS"16" (decimes), the reverse showing superb "GPO/Mauritius" despatch cds, light soiling and filing folds but a remarkable first day usage, which opens well for display, one of only two know first day usages from the De La Rue period.			
70162	✉	48	150 - 200
1860-63 4d. rose vertical pair, on 1862 (July 8) entire letter from Flacq to Bordeaux, endorsed "Voie de Suez", neatly cancelled "B53", backstamped Mauritius code A "JY 9/62" c.d.s. and Aug. 7 arrival, attractive.			
70163	✉ / 70	48+49	300 - 400
1860-63 4d. rose and 6d. green vertical pair, on 1863 (6 June) double rate entire to Bordeaux, marked "p Nepaul via Suez and Marseille", both tied by "B53" obliterator and red Suez transit c.d.s., showing unframed "p.d." alongside with, on reverse, despatch and arrival datestamps; the entire with the odd minor tone spot and with some small faults on reverse; an attractive and rare franking.			



70164	田 P	49	200 - 300
1860-63 6d. green imperforate block of four imprimaturs from the left of the sheet, fresh og with some minor wrinkles and small scissor cut between at foot, though of very fine appearance.			



70165

(*)

50

300 - 500

1860-63 6d. slate, unused without gum, handstamped "SPECIMEN" diagonally in red serified characters (Samuel type HK1), extremely rare with this being the only known example on this value, with a single copy of the 1/- green being recorded. An important item for both Mauritius and Hong Kong philately. Cert B.P.A (2001).

Note: previously regarded as a Hong Kong local overprint, it is now believed to have been applied at Somerset house. See enclosed article from the Hong Kong study circle journal no 315 (Oct 2000).



70166



70168

70166

P

52

400 - 600

1863 (c) piece (108x42mm) counter sunk and mounted with three stamp size die proofs of the 3d., 1/- and 5/-, stamp size die proofs in black on glazed card, some peripheral toning/burnishing affecting the proof, though still an attractive and rare item. Ex De La Rue archives. A fine and rare proof.



70167



70170

70167

田 P

52

200 - 300

1860-63 1/- buff imperforate block of four imprimaturs from the right of the sheet, fresh og with some minor wrinkles but very fine.

70168

P

56

200 - 300

1860-63 Head with uncleared surround, stamp-size proof in black on glazed card, fine. Ex De La Rue archives, Robert Marion, November 2013 (Lot 44123).



70172



70172ex1



70172ex2



70172ex3



70172ex4



70172ex5



70173



70177



70178



70179



70169 S 56, 59, 61, 62 800 - 1'200

1863-72 1d. purple-brown, 2d. pale blue, 3d. dull red and 4d. rose affixed to part of a page from the day book with details of the stamps, each with manuscript "Specimen", all with perf faults due to be cut out by scissors, fine. Ex: De La Rue archives, November 1976, Robert Marion, November 2013 (Lot 4152).

70170 * 田 P 56w 200 - 300

1863-72 1d. purple-brown, wmk CC (**Inverted**) imperforate block of four imprimaturs from the foot of the sheet with good margins on other sides, lovely fresh colour and part OG; some wrinkling, otherwise fine; also a single example with just clear to large margins.



70171 * P 57/67 700 - 1'000

1863-72 1d. brown, 2d. bright blue, 4d. rose, 6d. blue-green, 10d. maroon, 1/- yellow imperforate imprimaturs, large margins all round and large part og, showing lovely fresh colour, 1d., 4d. and 10d. with some gum creasing, nevertheless a rare and most attractive group.

70172 P / 74 58/68 1'200 - 1'500

1872 (c.) 1d. bistre, 2d. bright blue, 4d. rose, 6d. blue-green, 10d. maroon and 1/- orange "set" of six matching imprint blocks of 12 plate proofs from the foot of the sheet on thick glazed wove paper, overprinted "Cancelled" (type d7), the odd trivial bends and surface marks though a beautiful and most desirable series of blocks; very rare of which only one sheet of each value existed (72)

Note: The 3d. 9d and 5/- values never existed in this form and the absence of the imprint from the 10d. block reflects the later manufacture of the plate for that value.

Provenance: "Adamastor", December, 2017 (80144).

70173 ** * 田 / 74 59 200 - 300

1863-72 2c. pale blue, mint block of twelve from the right of the pane, large part OG; a scarce multiple (S.G.59, £900+).



- 70174** S 60, 63, 66, 68, 72 **700 - 1'000**
 1863-72 3d. dull red, 6d dull violet, 9d. yellow-green, 1/- yellow and 5/- bright mauve, each with manuscript "Specimen" and affixed to small piece, all with perf faults due to being cut out by scissors, fine and very rare. Ex De La Rue archives, November 1976.



- 70175** P 70175 70180 70181 61, 71 **300 - 400**
 1863-72 3d. and 5/-, stamp-size proofs in black on glazed card, both with some light peripheral staining otherwise fine. Ex: De La Rue archives, Ex Marion



- 70176** * 61a **150 - 200**
 1863-72 3d. dull red (towards deep) horizontal interpanneau pair, large part OG; small handstamp on reverse, though not detracting from the very fresh and fine appearance; a rarity in this form.

- 70177** ✉ / 74 62 **50 - 80**
 1863-72 4d. rose pair, on 1871 (4 May) envelope to France, neatly tied by "B53" obliterator, showing unframed "p.d." with, on reverse, despatch and arrival datestamps.

- 70178** ✉ / 74 62, 68 **400 - 500**
 1863-72 4d. rose pair and 1/- yellow vertical pair, on 1867 (18 July) double entire to Bordeaux, marked "St. Mozambique via Suez & Marseilles", each cancelled "B53", showing unframed "p.d." and light French maritime octagonal d.s. with, on reverse, despatch and arrival datestamps. Holcombe Opinion (1993). S.G. 62, 68. Ex Hiroyuki Kanai, November 1993.

- 70179** ✉ / 74 62+65 **400 - 500**
 1863-72 4d. rose and 6d. green wing-margin strip of six, on 1866 (18 (Oct.) treble rate entire to Bordeaux, marked "St. Mozambique via Suez & Mar, each cancelled "B53", showing unframed "p.d." and "pos. an. v. paq. f/2 mars 2" octagonal d.s. with, on reverse, despatch and arrival datestamps; the entire a little soiled and with some small faults, mainly on reverse, a scarce franking; ex Marion.

- 70180** P 64 **200 - 300**
 1860-63 6d. stamp-size proof in black on glazed card, fine. Ex De La Rue archives.

- 70181** P 64, 68 **300 - 500**
 1860-63 Master proof for the 6d./, 1/- design with uncleared value tablets and surround, stamp-size in black on glazed card, fine. Ex De La Rue archives.

70182

✉ / 82

65

70 - 100

1863-72 6d. green with wing-margin, on 1877 (11 Oct.) entire to Marseilles, bearing clearly tied by "B53" duplex and showing red Marseilles entry datestamp. fine.



70183



70184

70183

E

67

2'000 - 3'000

1863-72 10d. stamp-size composite essay with printed head and frame superbly hand painted in purple and Chinese white, fine. A most delightful and colourful essay.

Provenance: Dale Lichtenstein, September 1969 (Sale 6), Hiroyuki Kanai, November 1993 (Lot 389), Robert Marion, November 2013 (Lot 4144).

70184

P

67

200 - 300

1863-72 10d. (type 10), stamp size die proof in black on glazed card, counter sunk mounted in piece (36x41mm), some peripheral toning/burnishing affecting the proof, though still an attractive and rare item. Ex De La Rue archives.



70185

P

67

200 - 300

1863-72 10d. master die proof in black on white glazed card (90 x 60mm.), endorsed 'after hardening' and dated 'July 18, 1872'; fine.



70186

P

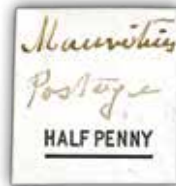
68

200 - 300

1860-63 1/- stamp-size proof in black on glazed card, fine. Ex De La Rue archives.

Lot n°	Symbol(s) / Photo page	Cat. n°	Estimate (€)
70187	* 田 1863-72 1/- blue block of four fresh large part original gum, some perforation faults otherwise fine and with fresh colour (S.G.69, £600+).	69	150 - 200
70188	✉ / 82 1863-72 1s blue strip of four, on 1873 (14 Nov.) quadruple rate entire to Calcutta, marked "Via Aden", cancelled "B53", showing red ink "3/4d" with, on reverse, despatch, Sea Post Office and arrival datestamps; the envelope a fraction soiled though a very scarce franking; ex Marion.	69	300 - 400

1876-78 Surcharges (SG 76-91)



70189	P 1877 "half penny" stamp-size die proof of the surcharge, in black on glazed card with manuscript "Mauritius Postage" and marked on reverse "12/1/77, 60 leads". Scarce.	76	150 - 200
-------	--	----	-----------



70190



70191



70194



70190	* 1876 1/2d on 9d dull purple, variety surcharge inverted , mint part o.g., fine; cert RPS (1996) (S.G. £850).	76a	300 - 400
70191	* 1876 "HALF PENNY" on 9d. dull purple (type 11), Variety Surcharge inverted , fresh with large part og, fine and rare. Cert B.P.A. (1949) (S.G.76a, £850).	76a	200 - 300



70192



70193

70192	⊙ 1876 "Half Penny" surcharge (type 11) on 9d. dull purple, variety Surcharge double , fine used. Rare. Cert Certificate (2013) (S.G. £2250).	76b	700 - 1'000
70193	* 1876 1/2d. surcharge, (type 12) on 1860-63 9d. dull purple, unused with traces of gum; fresh and fine. Rare. (S.G.78, £3'250). Cert. B.P.A (2020).	78	700 - 1'000
70194	(*) 1876 and 1877, group of three unused stamps with "CANCELLED" remainder hs incl. a fine example of the very scarce 1876 1/2d on 9d red surcharge and both shades of the 1877 1s on 5s (rosy mauve with minor imperfections, bright mauve has a tear).	78, 81, 82	100 - 150



70195

70197

70198

70199

70195

*

78var

150 - 200

1876 prepared for use but not issued ½d. (type12 in red) on 9d. dull purple, two unused examples overprinted "CANCELLED" (type MR1) showing contrasting shades of the basic stamp and of the surcharge; fresh Mint OG, attractive and scarce.

70196

** * 田 / 82

80

200 - 300

1877 "One Penny" on 4d. rose carmine, mint imprint block of 24 from the lower left of the pane, lovely fresh colour, with all bar 5 stamps mint NH; a scarce multiple (S.G.80, £696+).

70197

*

81

200 - 300

1877 "One Shilling" on 5/- rosy mauve horizontal pair, the right stamp showing surcharge shifted upwards, fine mint. Scarce. (S.G. 81, £700).

70198

*

81w

150 - 200

1877 1/- on 5/- rosy mauve (type 15), **variety watermark inverted**, a superbly fresh example with large part og; minor gum crease in no way affecting the fine appearance. Scarce.(S.G.81w, £550).

70199

*

82a

100 - 150

1877 1/- surcharge (type 15) on 1863-72 5/- bright mauve, **variety wrong font "S"**, large part OG; fine and very rare. Cert B.P.A. (2007).



70200ex

70202

70200

* 田

83-91

200 - 300

1878 set of values to 2r. 50c. on 5/- less the 25c. on 6c. in fresh mint OG blocks of four (the 38c. in block of 6); a wonderfully fresh looking group.

70201

** * 田 / 82

86

100 - 150

1878 13c. on 3d. orange red, imprint block of 12, fresh mint with all bar the top left stamp mint NH; a fine and rare multiple.

70202

*

86var

300 - 400

1878 "13c." on 3d. orange-red, wing margin block of four **variety horizontal perforations 4mm. from foot**, large part OG, fine mint, a visually appealing variety. very rare.

- 70203** ✉ / 82 1878 25c. on 6d. slate-blue, on 1878 (1 Feb.) entire to Marseilles, tied by clear "B53" duplex and showing arrival date stamp on reverse. fine and attractive. 88 **50 - 80**
- 70204** E 1878 "50 cents" on 1/- orange essay, without gum, vertical crease in the wing margin just touching the design at lower left, otherwise fine. Scarce. 90 **80 - 120**

1879-80 De La Rue Watermark CC (SG 92-100)



- 70205** P 1883-94 Requisition sheet, The Unique sheet from the Colonial Post Master, general Post Office in Mauritius, Dated "14th Sep 1882", headed "Requisition for the undermentioned Postage Stamps required for use of this department" bearing examples of the 1879-80 2c. venetian red, 4c. Orange, 17c. rose (changed in manuscript to 16c.) and 25c. olive-yellow, with details of quantities required; very rare. Ex De La Rue Archives. **3'000 - 4'000**

The Manuscript alteration on the 17c. confirms that the 17c. was to be replaced by a 16c. adhesive. As it Transpired, the new 16c. adhesive in rose was never supplied, which resulted in the local provisional surcharges of February and July 1883. In the De La Rue archives there is a record of a submission on 24th January 1883 of a design for a 16c. value, which was not approved, the 16c. adhesive printed in chestnut was eventually placed on sale in 1885.



70206



70207

- | | | | |
|---|---|----|-----------|
| 70206 | P | 92 | 200 - 300 |
| 2c. master die proof in black on white glazed card (90 x 60mm.), dated 'Oct. 16 1877', fine. | | | |
| 70207 | P | 92 | 200 - 300 |
| 2c. die proof in black on glazed card (92x60mm.) marked "before hardening" and dated "Oct 19 1877", fine. | | | |



- | | | | |
|---|---|--------|-------------|
| 70208 | P | 92-100 | 800 - 1'200 |
| 2c. to 2r 50c. set of nine imperforate imprimaturs, each with large margins and all but the 13c. with brilliant large part og, the odd trivial wrinkles, not detracting from the lovely fresh appearance. Scarce. | | | |



- | | | | |
|--|---|-------------|-----------|
| 70209 | P | 92, 98, 100 | 300 - 500 |
| 2c. Venetian red, 38c. bright purple and 2r 50c. brown purple set of three imperforate imprimaturs, each with very large margins, overprinted "Cancelled" (type d7) with out gum; the 2c. with light crease, though a very attractive and rare trio, unrecorded by Samuel with this overprint. | | | |



- | | | | |
|--|---|--------|-----------|
| 70210 | P | 92/100 | 300 - 500 |
| 2c., 13c., 17c., 28c., 50c., and 2r50c. set of imperforate imprimaturs, all with good margins all round; a very rare and most attractive series. | | | |



70182



70196



70188



70201



70203



70212



70216



70223



70211



70213

- | | | | |
|--|-------------|----|------------------|
| 70211 | P | 93 | 200 - 300 |
| 4c. die proof in black on glazed card (92x60mm.) marked "before hardening" and dated "Dec 4 1877", fine. | | | |
| 70212 | ** * 田 / 82 | 93 | 200 - 300 |
| 4c. orange marginal block of 18 from the upper right of the sheet showing plate number "1"; large part OG; a scarce multiple (S.G.93, £1'170). | | | |
| 70213 | P | 94 | 200 - 300 |
| 8c. master die proof in black on white glazed card (90 x 60mm.), dated 'Nov. 8 1877', fine. | | | |



70214



70215

- | | | | |
|---|-------------|----|------------------|
| 70214 | P | 94 | 200 - 300 |
| 8c. master die proof in black on white glazed card, endorsed dated 'Nov 6 1877'; fine. | | | |
| 70215 | P | 94 | 200 - 300 |
| 8c. die proof in black on glazed card (92x60mm.) dated "Nov 6 1877", fine. | | | |
| 70216 | ** * 田 / 82 | 94 | 200 - 300 |
| 1879-80 8c. blue marginal block of 12 from the upper right of the sheet showing plate number "2"; large part OG; a few fox marks on reverse and folded through the lower rows perfs. though not detracting from the fine appearance; a scarce multiple. | | | |

Please ensure your bids arrive on time!

In the case of equal bids, the first bid received will take precedence.



70217

70222

70217 * S 94/100 300 - 500
 8c, 13c (very close margin at left), 38c and 2R50 (small wrinkle) imperf. imprimatur group, mint hr, fine (4).



70218



70219

70218 P 95 200 - 300
 13c. master die proof in black on white glazed card, endorsed dated 'Nov 13 1877'; fine.

70219 P 95 200 - 300
 13c. master die proof in black on white glazed card, endorsed dated 'Nov 15 1877'; fine.



70220



70221

70220 P 95 200 - 300
 13c. master die proof in black on white glazed card, endorsed dated 'Nov 16 1877'; fine.

70221 P 95 200 - 300
 13c. die proof in black on glazed card (92x60mm.) dated "Nov 17 1877", fine.

70222 ⊙ F 95 100 - 150
 13c. slate Photo-Litho Sperati forgery, "used" with part "B5(3); Very rare.

Note: this is not the forgery described in the 1955 BPA handbook but reproduction "B" subsequently identified by Lowe and Walske.

70223 ✉ / 82 95 **400 - 600**
 13c. slate and 1883-94 2c. green and 25c. olive-yellow, on 1888 (3 Feb) linen lined envelope registered to Paris, tied by two light strikes of "B53", showing "R" in oval, red-brown registered dispatch cds and octagonal "LIGNE1/PAQ FR No 6" ship ds in red at right; vertical cover fold, clear of the adhesives the 13c. very fine and a rarity on cover.



70224 P 96 **400 - 600**
 1879-80 17c. rose block of four imperforate imprimaturs, large margins from the foot of the pane, brilliant large part og; insignificant gum wrinkles and traces of rubbing though most attractive and very rare as a block.



70225



70226

70225 P 96 **200 - 300**
 17c. master die proof in black on white glazed card, endorsed 'before/ hardening' and dated 'Dec 20 1877'; fine.

70226 P 96 **200 - 300**
 17c. master die proof in black on white glazed card, endorsed dated 'Dec 17 1877'; fine.

70227 ✉ / 96 96 **80 - 120**
 1879-80 17c. rose, on 1882 (Mar. 21) envelope to Scotland in the hand of General Gordon (then Commander of the Royal Engineers in Mauritius), backstamped Apr. 17 arrival, slight soiling, scarce.

Additional images from larger lots
 may be available at www.davidfeldman.com

If a lot of your interest is not pictured in our website, you may request images at info@davidfeldman.com



- | | | | | |
|--|---|-------|----|-----------|
| 70228 | P | 70228 | 97 | 200 - 300 |
| 25c. master die proof in black on white glazed card (90 x 60mm.) endorsed 'before hardening' and dated Nov. 2 1877'; fine. | | | | |
| 70229 | P | 70229 | 97 | 200 - 300 |
| 25c. die proof in black on glazed card (92x60mm.) dated "Oct 31 1877", fine. | | | | |



- | | | | | |
|--|---|-------|----|-----------|
| 70230 | P | 70230 | 97 | 200 - 300 |
| 25c. die proof in black on glazed card (92x60mm.) marked "After Hardening" and dated "Nov 13 1877", fine. | | | | |
| 70232 | P | 70232 | 97 | 200 - 300 |
| 38c. die proof in black on glazed card (92x60mm.) marked "Before Hardening" and dated "Nov 24 1877", fine. | | | | |



- | | | | | |
|---|------|-------|----|-----------|
| 70231 | ** 田 | 70231 | 97 | 500 - 800 |
| 25c. olive-yellow in a superb mint NH block of four, lovely rich fresh colour; a very rare multiple (S.G.97, £1'900+) | | | | |
| 70232 | P | 70232 | 98 | 200 - 300 |
| 38c. die proof in black on glazed card (92x60mm.) marked "Before Hardening" and dated "Nov 24 1877", fine. | | | | |



70233



70234

- | | | | | |
|-------|---|--|----|-----------|
| 70233 | F | 1879 38c, glass master negative in black, broken and affixed on a smaller glass by Sperati; an exceptional item with no other cliché or trial exposure in the “Ultimate” Collection. The matrix is the most important and first element in the process of reproduction, and this is unique. | 98 | 400 - 700 |
| 70234 | F | 1879 38c, trial exposure on glass in light brown, showing a vertical crack through the glass stemming from the master negative; a unique item with no other cliché or trial exposure in the “Ultimate” Collection. | 98 | 300 - 500 |



70235



70236

- | | | | | |
|-------|---|--|----|-----------|
| 70235 | F | 1879 39c, glass support cliché in brown, a horizontal pair printed as tête-bêche. | 98 | 300 - 600 |
| 70236 | F | 1879 38c, trial exposure on glass, somewhat damaged by humidity, in a light brown shade; an extremely rare trial with no other cliché or trial exposure found in the “Ultimate” collection of Sperati. | 98 | 200 - 300 |



- | | | | | | |
|---|---|-------|-------|----|-----------|
| 70237 | P | 70237 | 70238 | 99 | 200 - 300 |
| 50c. master die proof in black on white glazed card (90 x 60mm.), endorsed 'before hardening' and dated 'Dec. 7. 1877', fine. | | | | | |
| 70238 | P | | | 99 | 200 - 300 |
| 50c. die proof in black on glazed card (92x60mm.) dated "Dec 5 1877", fine. Ex Marion. | | | | | |



- | | | | | | |
|---|---|-------|-------|-----|-----------|
| 70239 | P | 70239 | 70240 | 99 | 200 - 300 |
| 50c. die proof in black on glazed card (92x60mm.) marked "After Hardening, and dated "Dec 11 1877", fine. | | | | | |
| 70240 | P | | | 100 | 200 - 300 |
| 2r 50c. die proof in black on glazed card (92x60mm.) dated "Oct 22 1877", fine. | | | | | |



- | | | | | | |
|---|---|-------|-------|-----|-----------|
| 70241 | P | 70241 | 70242 | 100 | 200 - 300 |
| 2r 50c. die proof in black on glazed card (92x60mm.) dated "Oct 23 1877", fine. | | | | | |
| 70242 | P | | | 100 | 200 - 300 |
| 2r 50c. die proof in black on glazed card (92x60mm.) dated "Oct 25 1877", fine. | | | | | |



70243



70245

70243

P

100

200 - 300

2r 50c. die proof in black on glazed card (92x60mm.) marked "After Hardening" and dated "Oct 29 1877", additionally initialled at lower right. fine.

1883-94 De La Rue Watermark CA (SG 101-111)



70244

P

101

3'000 - 4'000

1893 1c. pair of beautifully hand painted essays on tracing paper (65x79mm.), in an unissued design, the other as issued design, each painted in lilac with lettering, value, and in the case of the unissued design, portions of the frame, highlighted in Chinese white, , the issued design lettered "A" and dated "Jan 5th. 93", the unissued design lettered "B" and dated "Jan. 13th. 93". A unique and wonderfully fresh and highly attractive pair.

70245

P

101

200 - 300

1c. master die proof in black on white glazed card, endorsed 'before/ hardening' and dated '21 mar. 93'; fine.

70246

* 田 / 96

107

70 - 100

1893 watermark Crown CA, 15c chestnut, marginal block 18, being the lower three rows of the left pane, showing plate '1' in margin. Superb and fresh unmounted (S.G.107, £171+).



70247 P 109 800 - 1'200

1885 hand painted essay of the 16c. issue design with blank value tablet, in chestnut with "Mauritius postage" in Chinese white and "16 cents" value tablet hand painted below, beautifully executed on tracing paper (19x22mm.) dated "2 jul. 83" which has a Barbados 1882 perforated proof (thinned) with blank value tablet hand stamped "cancelled" attached over upper left side, marked "for colour" A delightful piece of De La Rue artwork. Ex De La Rue archives, November 1976, Robert Marion, November 2013 (Lot 4249).



70248

70248 P 109 200 - 300

16c. issue design die proof with blank value tablet, in black on glazed card (92x60mm.) marked "after hardening", dated "20 SEP 83" and additionally marked in pencil "W Bartlett", fine. Ex Marion.



70249

70249 P 109 200 - 300

16c. issue design die proof with blank value tablet, in black on glazed card (92x60mm.) marked "before hardening", dated "20 SEP 83", fine.

1883-91 Surcharges, Arms & Jubilee Issues (SG 112-35, 137)

70250 ✉ / 96 112 100 - 150

1883 16 cents on 17c. rose, Type 28, narrow surcharge pair, on 1883 (21 Apr.) envelope to Naples, marked "Per French Mail", tied by "B53" obliterator, the reverse with despatch and arrival datestamps. Scarce. Ex Peter Jaffé, January 2007.

70251 ✉ / 96 112 70 - 100

1883 16 cents on 17c. rose, Type 28 narrow surcharge single, on 1883 (23 Feb.) envelope (a little soiled) to Bordeaux, clearly tied by "B53" duplex, showing "ligne t/paq. fr. no 3" c.d.s. in black with arrival datestamp on reverse; Cert B.P.A (2013).



70252



70253



70255



70258

70252

*

114

100 - 150

1883 16c. surcharge (type 28a) on 1879-80 17c. rose, large part OG; tiny surface blemish to left of nose mentioned only for accuracy, otherwise fresh and fine. Rare. Cert B.P.A (2022) (S.G.114, £400).

70253

P

115

150 - 200

1883 16c on 17c Rose imperf. plate proof with wmk CC (not wmk CA as issued) and in a slightly different shade, fine appearance, believed to be unique, ex De La Rue archives and Kanai.



70254

(*) ⊙ F

116a

100 - 150

1886-91, Surcharge varieties group incl. 1886 2c on 38c without bar lightly used, very fine (S.G. £250), what look to be three forgeries of 1891 2c on 4c double surcharge mint and used and 2c on 38c on 9d double overprint one inverted mint (toned) (4).

70255

*

116b

300 - 400

1886 2c. surcharge (type 30) on 1879-80 38c. bright purple, **variety surcharge inverted**, large part OG; fine and rare. Cert B.P.A (2014) (S.G.116b, £1'200).

70256

✉ / 96

117

500 - 800

1887 2c. on 13c. wing-margin strip of three in combination with 1880 13c. wing-margin pair, on 1888 (1 June) envelope registered from Beau-Bassin to Paris, all cancelled by "27" obliterator, showing "registered/mauritiu" oval d.s. and "ligne t/paq. fr. no 4" octagonal d.s., both in red, with despatch and arrival datestamps on reverse; the envelope with central vertical fold. A very scarce franking.



70257

** * 田

117b

700 - 1'000

1887 "2 Cents" in red, locally overprinted on 13c. slate block of four, **variety overprint double**; fine mint, the lower pair mint NH, also a normal block of four for comparison, a very rare multiple (S.G.117b, £3'400+).

70258

*

118var

100 - 150

1891 "Two Cents" surcharges, (type 32) on 1883-94 4c. carmine, **variety "TS" of Cents omitted**, large part OG; diagonal bend at foot; though of fresh and fine appearance. Rare. Cert B.P.A (2015). Ex Kanai.



70259



70260



70261



70262

70259	*	119a	200 - 300
1891 "TWO CENTS" on 17c. rose (type 32), variety surcharge inverted , fresh colour and large part og; rare so fine (S.G.119a, £550).			
70260	*	119a	150 - 200
1891 Surcharged locally 2c on 17c rose, error surcharge inverted, mint h.r. with original gum, fine and fresh (S.G. £550).			
70261	*	120a	150 - 200
1891 "Two Cents" surcharge (type 33) on 38c. on 9d. pale violet, variety surcharge inverted , large part OG; fine and rare. Cert Brandon (2019) (S.G.120a, £600).			
70262	⊙	120a	150 - 200
1891 "Two Cents" on 38c. on 9d. pale violet, variety Surcharge Inverted , Good Used, with some slight staining at top. Scarce. Cert R.P.S (1976).			



70263



70264



70265



70266

70263	*	120b	200 - 300
1891 "Two Cents" surcharge (type 32) on 38c. on 9d. pale violet, variety surcharge double , large part OG; fine and rare. Cert Brandon (2019) (S.G.120b, £800).			
70264	*	120c	100 - 150
1891 "Two Cents" surcharges, (type 33) on 1878 38c. on 9d. pale violet vertical pair, variety Surcharge double one inverted , large part OG; fresh and fine. Rare. (S.G.120c, £380).Cert. B.P.A (2015).			
70265	*	120c	70 - 100
1891 2c. on 38c. on 9d. pale violet (Type 33), variety surcharge double on inverted , fresh with large part OG, very scarce (S.G.120c, £190).			
70266	*	121b	80 - 120
1891 2c. on 38c. bright purple (Type 32), variety surcharge double , fresh with large part OG, very scarce (S.G.121b, £250).			

The currency of the auction is the British pound.





70267



70268

- | | | | |
|---|-----|------|-----------|
| 70267 | E | 127 | 500 - 800 |
| <p>1895 Arms Issue, hand painted drawing of the Arms with legend in various colours, finely executed on tracing paper (80x95mm.) in a circular frame (54mm.), most attractive; also enlarged photographic reproduction of artist's drawing for a 3c. value in a design similar to that issued. Ex: Robert Marion, November 2013 (Lot 4280).</p> | | | |
| 70268 | P | 127 | 200 - 300 |
| <p>1895 (Apr) Master die proofs of the Arms issue with uncleared value tablet and surround in black on glazed card (92x60mm.), marked "Before Hardening and dated "25 APR 95" in blue, fine.</p> | | | |
| 70269 | * S | 127s | 80 - 120 |
| <p>1895-99 "Arms" set of 6 (2) to 18c, each overprinted "Specimen", the first set mounted on album page pieces almost certainly from the Natal P.O. Archive, the 2c.-4c. and 18c. all showing identical "M" flaw, the second set with large part OG and showing lovely fresh colour, very fresh and attractive.</p> | | | |



- | | | | |
|--|---|-----|---------------|
| 70270 | E | 129 | 1'800 - 2'400 |
| <p>1895 Arms hand painted essay of the low value format in blue showing "3 cents" value crossed through in red, on thin card (90x92mm.) marked "key" die for various duties" and "Appd, EEB, 23.3.95"; the card a trifle spoiled away from the design. Delightful.</p> | | | |



70271

E

133

1'000 - 1'500

1898 Diamond Jubilee, a stunning hand painted essay in the issued colours on thick card, dated "Sept 1st 97" and hand stamped 27 SEP 97, the card with a vertical bend at left and some toning, though in no way detracting from the fresh and lovely appearance of the painted design. Rare.



70272

E

133

700 - 1'000

1898 Diamond Jubilee, Photographic essay of the finished design, stamp-size, affixed to card (114x89mm.) dated "Sept 1st 97"; two pinholes at top well clear of design. Ex De La Rue archives.



70273



70274

70273 P 133 300 - 500
 1898 Diamond Jubilee, Complete design with blank value tablet and "thirty six cents" value tablet with manuscript "Mauritius Postage" at top, both stamp-size in black on glazed card and affixed to piece (107x57mm.) showing "Dec 13" and "Dec 17" respectively, the first "60 Leads, 6 extra", the second "60 Leads" and both further dated "Feb 11th 98" in red ink; the first with some very minor surface faults. Ex: De La Rue archives, Robert Marion, November 2013 (Lot 4288).

70274 P 133 200 - 300
 1898 Diamond Jubilee, Complete design with blank value tablet in black on glazed card (92x60mm.), marked "before hardening" and dated "9 dec 97", fine.



70275 P 133 200 - 300
 1898 Diamond Jubilee, Complete design with blank value tablet in black on glazed card (58x43mm.) dated "8.12.97" in pencil, fine.



70276 P 133 200 - 300
 1898 Diamond Jubilee, Arms and crown only with square uncleared surround, in black on glazed card (34x48mm.) marked "14.10.99 for punch" in pencil, fine.



70227



70246



70251



70256



70250



70283



70299ex



70354



70277



70278

- | | | | |
|---|------|------|-----------|
| 70277 | P | 133 | 200 - 300 |
| 1898 Diamond Jubilee, Complete design with blank value tablet in black on glazed card (92x60mm.), marked "before hardening" and dated "9 dec 97" in blue, fine. | | | |
| 70278 | P | 133 | 200 - 300 |
| 1898 Diamond Jubilee, Complete design with blank value tablet in black on glazed card (92x60mm.), marked "After Striking" dated "13 dec 97" in blue, and initialled at lower right; fine. | | | |
| 70279 | ** S | 133s | 80 - 120 |
| 1898 Diamond Jubilee 36c. orange and ultramarine vertical strip of five (the largest possible as issued by the UPU), each overprinted "specimen", fresh and fine mint, fine mint NH. A rare multiple (S.G.133s, £275+). | | | |



70280



70281



70282

- | | | | |
|---|--------|------|-----------|
| 70280 | * | 134a | 150 - 200 |
| 1899 6c. on 18c. green and ultramarine, variety Surcharge Inverted , fine mint. Cert R.P.S. (2013) nonsensically notes "Gum toned", though actually fresher than other examples we have seen (S.G.134a, £700). | | | |
| 70281 | △ | 134a | 70 - 100 |
| 1899 6c. on 18c. green and ultramarine (2, one with variety surcharge inverted) on 1899 (14 June) 4c. on 36c. stationery envelope piece, all tied by Mauritius c.d.s., fine. Cert R.P.S. (1941). | | | |
| 70282 | △ | 134a | 70 - 100 |
| 1899 6c. on 18c. green and ultramarine with variety Surcharge Inverted , tied to small piece by Mauritius c.d.s. (14.6.1900), fine. | | | |
| 70283 | ✉ / 96 | 134a | 150 - 200 |
| 1899 6c. on 18c. green and ultramarine (2), one showing variety surcharge inverted , used on 1899 (14 June) locally addressed 4c. on 18c. stationery envelope, fine. Cert R.P.S. (2013). Ex: Robert Marion, November 2013 (Lot 4294) | | | |



70284

*

135a

100 - 150

1899 15c. on 36c. orange and ultramarine, **variety bar of surcharge omitted**, fine unused with large part original gum. very scarce (S.G.135a, £500).



70285

* S

135as

100 - 150

1899 15c. on 36c. orange and ultramarine handstamped "ultramar" in blue, fine with large part original gum. and another example with **bar of surcharge omitted**, overprinted "Specimen" rare in such fine condition.

Bidding Steps

50-100 → 5
 100-200 → 10
 200-500 → 20

500-1000 → 50
 1'000-2'000 → 100
 2'000-5'000 → 200
 5'000-10'000 → 500

All bids in British pounds

10'000-20'000 → 1'000
 20'000-50'000 → 2'000
 50'000-100'000 → 5'000
 100'000-200'000 → 10'000

Bids between these steps will be adjusted accordingly to the next higher bid step.

1899 Birth Bicentenary of la Bourdonnais (SG 136)



70286

E

136

4'000 - 6'000

1899 (Jun19) La Bourdonnais 15c, De La Rue Appendix sheet with imperforate colour trials in twelve colours dated 19.6.99 and again the day after. Minor soiling at edges, most attractive, unique.

Provenance: ex De La Rue archives 1976.



70287



70288



70289



70290

70287 E 136 1'000 - 1'500

1899 (Dec.) Mahe de Bourdonnais Bicentenary essays, 18c. composite stamp-size essay with photographic head in brown and frame printed in blue in a design similar to that issued but with value also in the upper corners, affixed to card (90x115mm.) lettered "B" and dated "March 28th 99". A superb essay. very rare. Ex: De La Rue archives, Robert Marion, November 2013 (Lot 4300).

70288 E 136 1'000 - 1'500

1899 (Dec.) Mahe de Bourdonnais Bicentenary essays, 18c. composite stamp-size essay with head and frame printed in blue in a design later modified for the final issue, affixed to card (90x115mm.) lettered "BB" and dated "March 28th 99". A superb essay. very rare. Ex: De La Rue archives, Robert Marion.

- 70289** E / 100 136 **1'000 - 1'500**
 1899 (Mar.) Mahe de Bourdonnais Bicentenary essays, 18c. composite stamp-size essay with head and frame printed in blue with details picked out in Chinese white, affixed to card (90x115mm.) lettered "BB" and dated "March 28th 99". with various annotations around the design including "Accent over e of Mahe", "Head slightly tilted to left-should be corrected" "Appd. but payment of duty to be omitted for the present 11/4". A superb essay. Ex: De La Rue archives, Robert Marion.
- 70290** E / 100 136 **700 - 1'000**
 1899 (Mar.) Mahe de Bourdonnais Bicentenary essays, 18c. composite stamp-size essay with photographic head in black and frame printed in brown in a design similar to that issued but with value also in the upper corners, affixed to card (90x115mm.) lettered "B" and dated "March 28th 99"; the card with some slight soiling.. A superb essay. very rare. Ex: De La Rue archives, Robert Marion.



- 70291** E 136 **700 - 1'000**
 1899 (13 Dec.) Bourdonnais, Two 15c. De La Rue copper plate stamp size composite essays in deep and light blue mounted on card and dated "March 28/99"; fine and scarce. Unique essays Illustrated on page 166 of Ibbotson's handbook.



- 70292** P 136 **3'000 - 4'000**
 1899 (April) Mahé de la Bourdonnais, 15c in ten different imperforate colour trials in ultramarine (as issued), yellow, carmine, myrtle-green, indigo, orange, red-orange, mauve, red-brown and sepia, a very rare and beautiful group with all but the red-orange and mauve; ex Kanai and De La Rue Archives.

Additional images from larger lots
 may be available at www.davidfeldman.com

If a lot of your interest is not pictured in our website, you may request images at info@davidfeldman.com



70293



70294



70295

- | | | | |
|---|---|-----|--------------------|
| 70293 | P | 136 | 800 - 1'200 |
| 1899 (29 May)(15c.) Bourdonnais die proof in black on surfaced wove (49x54mm) with complete die sinking, a progressive proof with blank value tablet and shading incomplete, dated in blue "29 MAY 99", superb and most probably unique in this form. Ex Kanai. | | | |
| 70294 | P | 136 | 800 - 1'200 |
| 1899 Bourdonnais complete stamp size die proof in myrtle-green on thick surfaced wove paper, a very rare and beautiful proof. Ex Kanai. | | | |
| 70295 | P | 136 | 400 - 600 |
| 1899 (Mar.) Mahe de Bourdonnais Bicentenary essays, The Unique 15c. working die proof from the printers day book, with numeral annotations vertically down the left hand side; very rare. Ex: De La Rue archives, Robert Marion | | | |



70296



70297



70298

- | | | | |
|--|--------|-----|------------------|
| 70296 | P | 136 | 300 - 500 |
| 1899 Bourdonnais colour trial in slate on unwatermarked wove paper, Rare. Ex De La Rue Archives. | | | |
| 70297 | P | 136 | 300 - 500 |
| 1899 La Bourdonnais, die proof in issued ultramarine on wove paper (49 x 45mm.), a few trivial stains and slight creasing. Ex Kanai. | | | |
| 70298 | P S | 136 | 300 - 500 |
| 1899 (13 Dec.) Bourdonnais, 15c. stamp size die proof in indigo on thin wove paper, engraved "SPECIMEN" in reverse above the impression; rare. Ex Lichtenstein and Marcus Samuel. | | | |
| 70299 | ✉ / 96 | 136 | 80 - 120 |
| 1899 La Bourdonnais 15c used on cover per the vessel "Yangtse" to Reunion Island, also 15c used on mourning cover to France by French Packet with LA REUNION A MARSEILLE L U No2 cds.; scarce. | | | |

70300 P S 136s 300 - 500
 1899 (13 Dec.) Bourdonnais, 15c. selection comprising stamp size proofs in black on thick paper (2) issued stamp Overprinted "SPECIMEN" mint (2) and used (2); generally fine.



70301 P 136s 200 - 300
 1899 (13 Dec.) Bourdonnais 15c. die proof in vermilion on thick surfaced wove paper and 15c. blue overprinted "SPECIMEN"; fine and scarce.

1900-05 Arms Issue (SG 138-155)



70302 P 200 - 300
 1900-05 Arms issue, stamp size master die proof with blank value tablet and stamp size proof of the value tablet, both in black on glazed card, mounted on piece cut from the day book, endorsed with the number of leads and dated. Scarce.



70303 P 200 - 300
 1900-05 "Arms" stamp size master die with blank value tablet in black on glazed card, along with a matching perforated colour trial in purple overprinted "SPECIMEN" (soiled and creased); Scarce.



70304 E

138 2'000 - 3'000

1900-05 Arms issue, De La Rue Appendix E sheets with 27 imperforate colour trials for the low values, on coloured and white papers, mostly affixed by top margin, a very fresh assembly, few with light creasing, a very rare group, ex De La Rue archives 1976.



70305



70307

70305

P

138

200 - 300

1896 (Dec) die proof with blank value tablet, in black on glazed card (92x60mm.), marked "Before Hardening" and dated "17 Dec 96" in blue; fine.



70306

P

138

200 - 300

1896 (Dec 31) stamp size die proof with blank value tablet, in black on glazed card, on day book piece, showing endorsements for the amount of leads taken and dated "Dec 31. 60" in red (indicating invoice date); a Unique and important item, documenting the early production of this plate, not used for printing postage stamps until 1902. fine.

70307

P

138

200 - 300

1897 (Oct) Master die proofs of the Arms and crown only with uncleared surround, in black on glazed card (92x60mm.), marked "Before Hardening" and dated "20 Oct 97" in blue, fine.



70308

P

138

200 - 300

1900-05 small arms 1c. dull purple on buff imperforate colour trials (4) on gummed watermarked paper with the duty plates in different colour; a scarce group.

70309

P

138

200 - 300

1900-05 small arms 1c. blue-green on buff imperforate colour trials (3) on gummed watermarked paper with the duty plates in different colour; a scarce group.



- 70310 P 138 200 - 300
1900-05 small arms 1c. dull purple on white, imperforate colour trials (4) on gummed watermarked paper with the duty plates in different colour; a scarce group.



- 70311 P 138 200 - 300
1900-05 small arms 1c. blue-green on white, imperforate colour trials (4) on gummed watermarked paper with the duty plates in different colour; a scarce group.

- 70312 P 138 150 - 200
1900-05 small arms 1c. purple on yellow, imperforate colour trials (3) on gummed watermarked paper with the duty plates in different colour; a scarce group.

- 70313 P 138 100 - 150
1900-05 small arms 1c. green on yellow, imperforate colour trials (2) on gummed watermarked paper with the duty plates in different colour; a scarce pair.

- 70314 P 138 100 - 150
1900-05 small arms 1c. purple on red and 1c. black on red, imperforate colour trials (2) on gummed watermarked paper with the duty plates in different colour; a scarce pair.

- 70315 P 138 100 - 150
1900-05 small arms 1c. black on white, imperforate colour trials (2) on gummed watermarked paper with the duty plates in different colour; a scarce pair.



- 70316 P 138 100 - 150
1900-05 "Arms" 1c. imperf colour trial, affixed to day book piece, and endorsed at left "Blue paper/D.F. Black/Ovptd. Blue/15 cents"; fine and scarce.

- 70317 * 138-152, 151a 80 - 120
1900-05 Arms, wmk. multiple Crown CC. 1c to 50c set of 15 values plus 25c on chalk-surfaced paper. Very fine fresh mint. SG 138-152, 151a.

- 70318 * 138-155 100 - 150
1900-05 Arms, complete set of 18 values. Fine or very fine mint (S.G.138-155, £400).



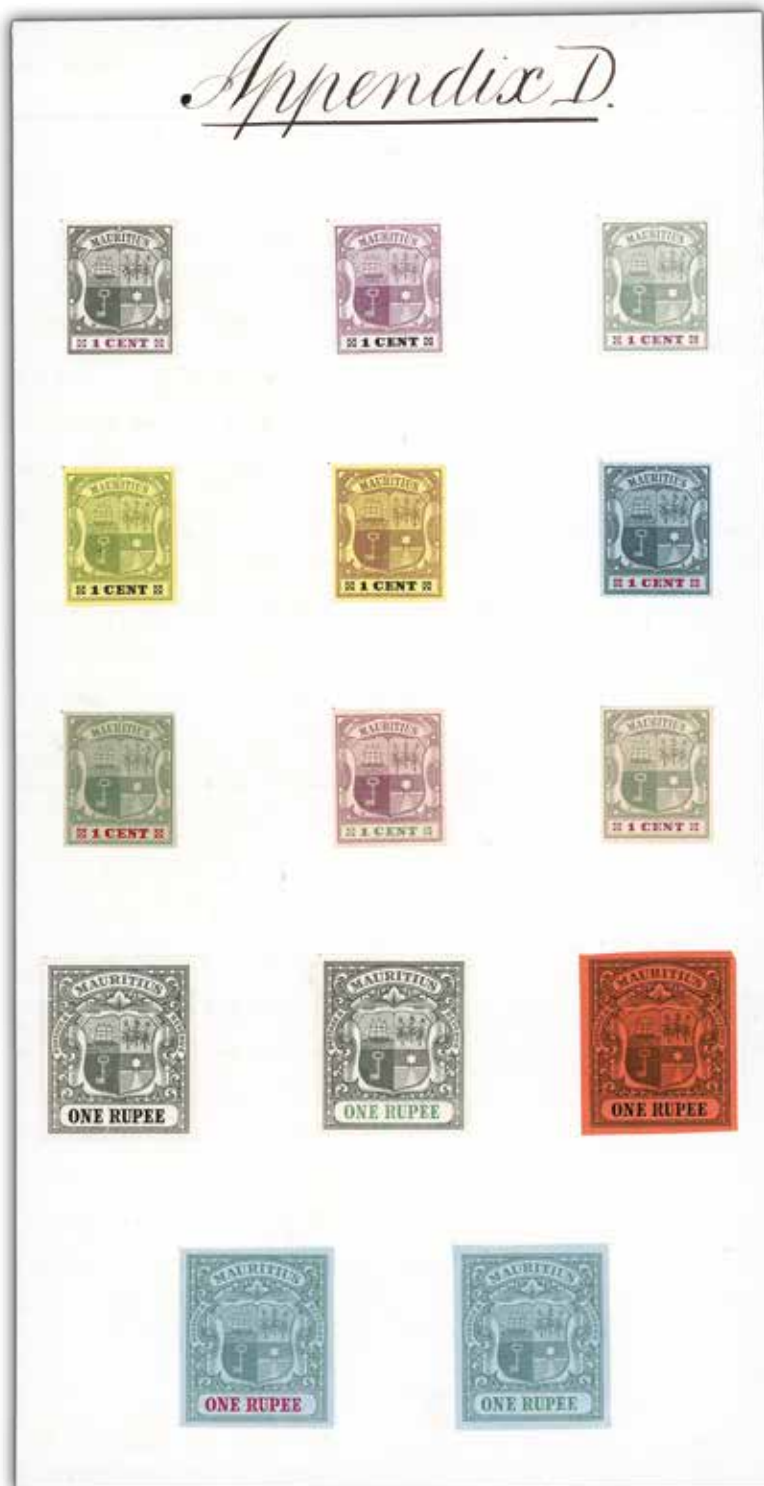
70319

E

138, 153

4'000 - 6'000

1900-05 Arms issue, De La Rue Appendix sheet B, with imperforate colour trials on coloured and white papers, 24 different low values all denominated 1 cent, and 10 different high values, each denominated 1 rupee, lovely fresh colours and a most impressive showpiece, unique, ex De La Rue archives 1976.



70320

E

138,153

2'000 - 3'000

1900-05 Arms issue, De La Rue Appendix sheet D, undated, mounted with 9 different 1c. and 5 different 1r. colour trials, a spectacular and unique page, ex De La Rue archives 1976.



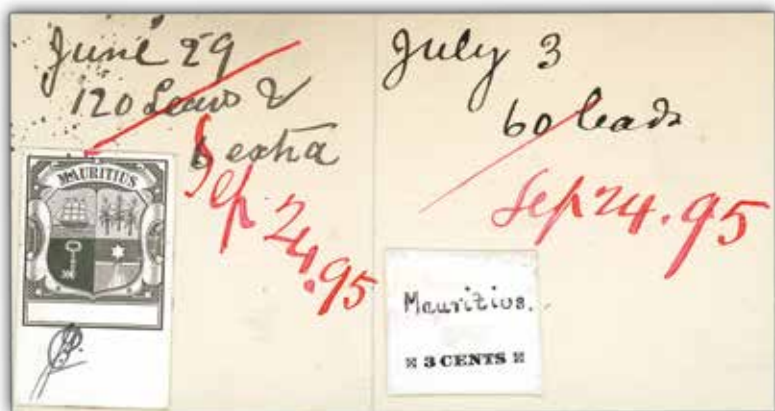
70321

E

138,153

2'000 - 3'000

1900-05 Arms issue, De La Rue Appendix C sheets with chosen colours for the original 14 values represented by imperforate colour trials (one cent for the low values, one rupee for the high values), extra trial for the 15c on Crown CA blue paper, a very fresh assembly, few with light creasing, a very rare group, ex De La Rue archives 1976.



70322 P

138/152 1'000 - 1'500

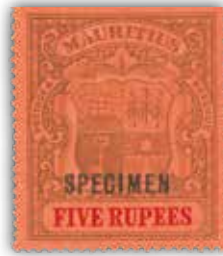
1900-05 Arms Issue Small format master die proof with blank value tablet (21x34mm.) in black on glazed card bespattered with ink spots and initialled in margin, together with stamp-size die proofs for the 1c., 2c., 3c., 4c., 5c., 6c., 8c., 15c., 18c., 25c. and 50c. value tablets in black on glazed card, each with manuscript "Mauritius" at top, and affixed to three pieces dated between "28 Jan" and "3 July" and giving details of leads taken. Ex De La Rue archives, Ex Sir Gawaine Baillie.



70323 P

138/153 500 - 800

1900-05 small arms selection of imperforate colour trials in the various colours, comprising 1c. (7), 3c. (2), 2r.50c. (1), 1r. (7), with the duty plates in different colours, a scarce group.



70324

* S

138s-155s

100 - 150

1900-05 set of 18 to 5r. overprinted "SPECIMEN", large part to full OG, the odd blemish, though a very fresh set, scarce complete (S.G.138s-155s, £425).



70325

P

140

500 - 800

1900-05 small arms 3c. dull purple on white, imperforate colour trials (15) on un-watermarked paper with the duty plates in different colour, one with trial cancel; a scarce group.



70326

P

140

300 - 400

1900-05 small arms 3c. dull green, imperforate colour trials (7) on un-watermarked paper with the duty plates in different colour, one with trial cancel; a scarce group.

Feldman
INTERNATIONAL AUCTIONS SINCE 1967

SMALL OBJECTS OF GREAT VALUE

Whether they have financial or sentimental significance, we care for your treasures as much as you do.

David Feldman SA is proud to partner with its new sister company, Feldman International Auctions (FIA), to combine fresh innovation with decades of experience.

We are excited to announce a significant auction of coins, watches, jewellery and *objets d'art* at the Beau-Rivage Hotel on December 1, 2024. Additional consignments welcome!

Contact us!

www.feldmanauctions.com





70327

E

140, 154

1'500 - 2'000

1900-05 Arms issue, De La Rue Appendix sheet date Aug 12 1895 mounted with 12 different 3c. colour trials, each initialled and proposed value alongside, a spectacular and unique page, ex De La Rue archives 1976.

70328

* S

140s

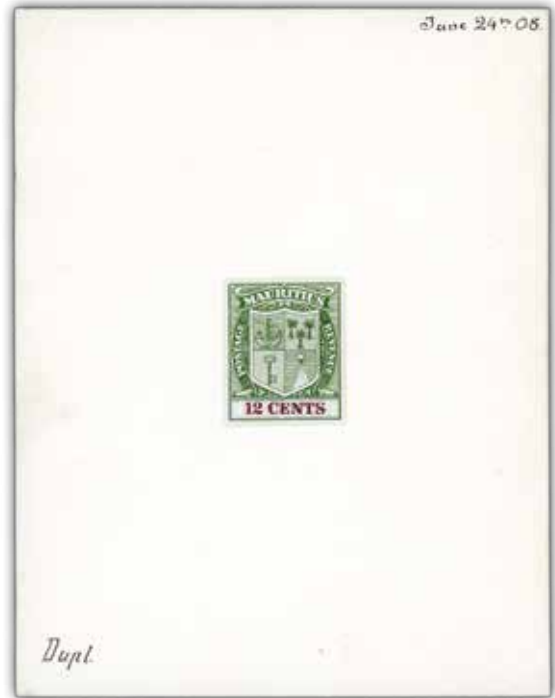
150 - 200

1902 3c. green and carmine/yellow, 5c. dull purple and black on buff and 6c. purple and carmine on red in strips of four, overprinted "Specimen", with additional Spécimen (Spanish) diagonal receiving handstamps, also 1944 4c. purple and carmine/yellow, (distributed in unused condition by the UPU) in a vertical strip of four with the same Spanish overprint, some faults and soiling though a very rare group with the additional handstamps possibly applied in Bolivia.

Lot n°	Symbol(s) / Photo page	Cat. n°	Estimate (€)
70329	* S 1900-05 3c., 5c. (dull purple and black on buff) and 6c, marginal examples from the top of the sheet showing plate number "1", each overprinted "Specimen", large part original gum, very fresh and attractive; a rare and remarkable trio with only six sheets of each value overprinted. Also 4c. green vertical pair overprinted, fine.	140s	80 - 120
70330	S 1900-05 range of values 2x4c., 5c., 8c., 12c., 25c., 50c. along with 1902 12c. on 8c. and 1903 Express 15c., each overprinted SPECIMEN and affixed to Madagascar UPU receiving authority ledger pages and handstamped "POSTES ET TELEGRAPHES/COLLECTION/DE BERNE/MADAGASCAR" a unique group. scarce.	141/152	400 - 700



70331



70335

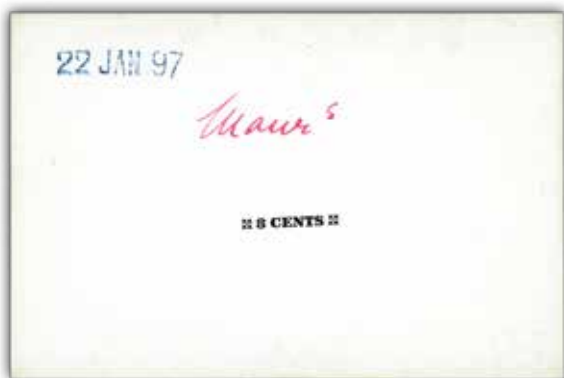
70331	E 1900-05 Arms Issue 5c. in green very similar to the 1910 design except for the value tablet, affixed to card (90x115mm.) dated "Jan 16th 08", fine.; very rare.	144	700 - 1'000
-------	--	-----	-------------



70332	P 1900-05 Arms Issue 5c. die proof of the value tablet with manuscript "Maur's" in red ink above, in black on glazed card (92x60mm.) dated "22 jan. 97", fine.	144-45	100 - 150
-------	---	--------	-----------



70333 * 146a 800 - 1'200
 1900-05 6c. purple and carmine on red, **variety watermark sideways to right**, large part OG; some gum creasing though of very fine appearance, **the only recorded example** which is the basis of the catalogue listing. Cert R.P.S. (2002) harshly states "Creased" (S.G.146a, £2'500).



70334



70336



70337



70338

70334	P		147	100 - 150
1900-05 Arms Issue 8c. die proof of the value tablet with manuscript "Maurs" in red ink above, in black on glazed card (92x60mm.) dated "22 jan. 97", fine.				
70335	E / 113		148	700 - 1'000
1900-05 Arms Issue 12c. in green, the value tablet excised and "12 cents" in claret inserted, the join touched up in Chinese white and very similar to the issued design (the 12c. did not come in this design until 1921), affixed to card (90x115mm.) dated "June 24th 08".				
70336	P		148	100 - 150
1900 (Jun) 12c. proof of the value tablet in black on glazed card (92x60mm.), date "26 Jun 00" in blue. fine.				
70337	P		149-50	100 - 150
1900-05 Arms Issue 15c. die proof of the value tablet with manuscript "Maurs" in red ink above, in black on glazed card (92x60mm.) dated "22 jan. 97", fine.				
70338	P		151	100 - 150
1900-05 Arms Issue 25c. die proof of the value tablet with manuscript "Maurs" in red ink above, in black on glazed card (92x60mm.) dated "22 jan. 97", fine.				



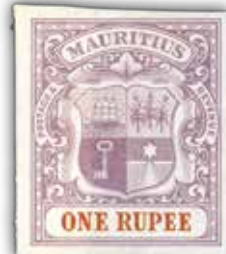
70339

E

153

1'500 - 2'000

1900-05 Arms issue, De La Rue Appendix sheet B undated mounted with 6 different 1r. colour trials, a spectacular and unique page, ex De La Rue archives 1976.



70340

P

153

300 - 400

1900-05 Arms Issue 1r. imperforate colour trials (5), in green and violet, green and purple (some paper adhering to reverse), dull purple and chestnut (some paper adhering to reverse), dull purple and brown (light vertical crease) and in green and red on green (small repaired tear at top left), all on gummed watermarked paper. Scarce.



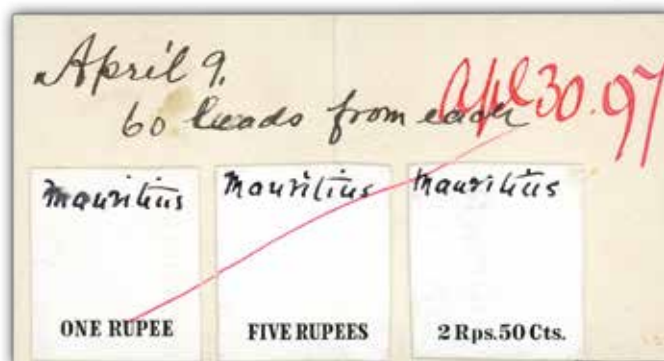
70341

P

153-54

700 - 1'000

1900-05 Arms issue, 7 large arms imperforate colour trials in various denominations and colours each affixed to single piece of appendix sheet, with one of the 1r. values and one 2r. 50c. value endorsed "Approved" in red, a fine and most attractive group. Rare.



70342

P

153-55

200 - 300

1900-05 Arms Issue 1r., 2r.50c. and 5r. stamp-size die proofs of the value tablets with manuscript "Mauritius" at top, all affixed to piece (102x53mm.) dated "April 9", marked "60 Leads from each" and further dated "Apr 30.97" in red ink, fine. Ex De La Rue archives; ex: Sir Gawaine Baillie, Robert Marion, November 2013 (Lot 4308)



70344

70343

- 70343**
**
1900-05 1r. grey-black and carmine corner marginal pair from the lower left of the sheet showing plate number "1", **variety watermark inverted**, fine mint NH, a superb positional piece with the variety evident in the margins from the face (S.G.153w, £280).
153w
100 - 150
- 70344**
*
1900-05 1r. grey-black and carmine, **variety watermark inverted**, large part original gum. (S.G.153w, £140).
153w
40 - 60



- 70345**
E
1908 3r. Arms essay, deeply engraved in maroon on varnished card, stamp-size and affixed to small piece. Unique and most attractive.
154
1'000 - 1'500

Bidding Steps

50-100 —————> 5	500-1000 —————> 50
100-200 —————> 10	1'000-2'000 —————> 100
200-500 —————> 20	2'000-5'000 —————> 200
	5'000-10'000 —————> 500

All bids in British pounds

10'000-20'000 —————> 1'000
20'000-50'000 —————> 2'000
50'000-100'000 —————> 5'000
100'000-200'000 —————> 10'000

Bids between these steps will be adjusted accordingly to the next higher bid step.



70346



70347

70346 E 154 **700 - 1'000**
 1900-05 Arms Issue 3r. in pink, attractive heavily engraved design of a large format with arms in centre, slightly touched-up by hand, affixed to card (90x115mm.) dated "Jan 16th 08".

Provenance: De La Rue archives, Robert Marion, November 2013 (Lot 4334).

70347 E 154 **700 - 1'000**
 1900-05 Arms Issue 3r. essay in brown, a horizontal design with arms in centre, apparent handwash border around oval centre, affixed to card (90x115mm.) dated "Jan 31st 08", fine and very rare.

Provenance: De La Rue Archives, Robert Marion, November 2013 (Lot 4335).



70348



70350

70348 P 154 **200 - 300**
 1900-05 "Arms" 2r 50c. imperf colour trial, affixed to day book piece and endorsed at left "1R. 85 cts"; fine and scarce.



- | | | | |
|---|---------|-----|-----------|
| 70349 | P | 154 | 100 - 150 |
| 1900-05 Arms Issue 2r.50 imperforate colour trial in dull purple and ultramarine on gummed unwatermarked paper, fresh and fine. | | | |
| 70350 | P / 118 | 155 | 200 - 300 |
| 1900-05 "Arms" 5r imperf colour trial, affixed to day book piece, and endorsed at right "5 Rs." and "Approved 14th Oct 97" in red; fine and scarce. | | | |

Later Issues



70351



70352

- | | | | |
|---|--------|---------------------|-----------|
| 70351 | * 田 | 162 | 100 - 150 |
| 1902 2r50 Overprinted Postage and Revenue (type 44) locally, a very fresh mint block of four, a scarce multiple (S.G.162, £520+). | | | |
| 70352 | * | 163a | 200 - 300 |
| 1902 12c. on 36c. orange and ultramarine, variety surcharge inverted , fine mint with large part original gum (S.G.135a, £800) Cert B.P.A (2012). | | | |
| 70353 | * | 164-175, 165a, 168a | 70 - 100 |
| 1904-07 Arms, wmk. multiple Crown CA. Complete set of eight values plus 2c and 6c chalk-surfaced papers. Very fine fresh mint. SG 164-175, 165a, 168a. | | | |
| 70354 | ✉ / 96 | 171 | 120 - 150 |
| 1910 (10 Jan.) 2c. brown card, uprated with 15c. black and blue on blue, from Beau Bassin to Quatre Bornes, marked "Express Delivery" and showing a fine "express" h.s. in a type unlisted by Proud, arrival c.d.s. (10.1) alongside; most unusual. | | | |
| 70355 | P | 181 | 100 - 150 |
| 1910 (Jan) issue Arms master die proof with blank value tablet, in black on glazed card (92x60mm.), marked "Before Hardening" and dated "18 aug 1908"; fine. | | | |
| 70356 | * S | 181s/195s | 80 - 120 |
| 1910 set of 15 values to 10r. mounted on pieces of album pages, almost certainly from the Natal P.O. Archive, each overprinted "Specimen", very fresh and attractive. Rare. (S.G.181s/195s, £400). | | | |



70357

P

185

1'000 - 1'500

1910 (Jan) issue 5c. in dark green on buff heavily engraved in an unadopted design, affixed to card (24x28mm.), fine.



70358

P

185/195

800 - 1'200

1910 (Jan) issue 5c., 12c., 25c., 50c., 1R., 2R 50c., 5R, 10R., name and duty plates in black on glazed cards (92x60mm.) dated "10 Aug 08", (the 5R. 09 Aug 09) fine.

70359 ** * 田 193 **40 - 60**
 1910 2r.50c. corner block of four with plate number '1' and 10r. single mint example; lightly mounted mint. fine.

70360 S / 136 196/204 **400 - 600**
 1913-22 range of values comprising 5c., (3), 25c (3), and 10r. (3), each overprinted SPECIMEN and affixed to Madagascar UPU receiving authority ledger page pieces and hand stamped "POSTES ET TELEGRAPHES/COLLECTION/DE BERNE/MADAGASCAR" with m/s heading at top indicating that these stamps were received 26 Feb 1912 (one year before they were actually issued in Mauritius) further enhanced by one of each value showing the constant variety "Broken M" of which only seven existed a unique group, these three values being the first stamps of the entire British Empire to be printed in the new Keyplate design. Rare.



70361 S 198/202 **500 - 800**
 1913-22 range of values comprising 12c., 25c (2), 50c., 1r. (2), 5r., 10r. and 2r 50c. in strips of three, each overprinted SPECIMEN and affixed to Madagascar UPU receiving authority ledger page pieces and hand stamped "POSTES ET TELEGRAPHES/COLLECTION/DE BERNE/MADAGASCAR" a unique group. scarce.



70362 ** * 田 204a **1'500 - 2'000**
 1913-22 10r. green and red on blue green (olive back), a superb mint NH block of four with interpanneau margin at left, a lovely fresh example of this very rare stamp. Cert B.P.A. (2010) (S.G.204a, £4'400+)

Provenance: "Adamastor", December, 2017 (80207).

70363 ** * 205 **200 - 300**
 1898-1921 fine mint selection of issues on stock cards, including 1913-21 KGV keytype, wmk. multiple Crown CA. Complete set of eight values plus the Die II for 25c and 1r. Very fine fresh mint, 1916 2r. 50c., 1913-21 5r. ; a very fresh and attractive group.

70364 ** * 205-22 **40 - 60**
 1921-26 Arms, wmk. multiple Script CA. 1c to 20c complete set of 17 values plus 15c cobalt shade. All bar the 4c green unmounted, very fine and fresh. SG 205-221, 219b.

70365 * S 205s-221s **100 - 150**
 1921-26 "Arms" set of 17 to 20c. overprinted "SPECIMEN" with 8 values (the 1925-26 new colours and values) in horizontal pairs, large part to full OG; the odd imperfections, though mostly very fine and fresh (S.G.205s-221s, £475).



70366



70367

70366 P 208 **100 - 150**
 1926 (Sep) 3c. proof of the value tablet and name in black on glazed card (92x60mm.), marked "After Striking" and dated "11.9.26". fine.

70367 P 209 **100 - 150**
 1921 (Dec) 4c. proof of the value tablet in black on glazed card (92x60mm.), marked "Before Striking" and dated "12/19/21". fine.



70368



70371



70372

70368 * S 210s **80 - 120**
 1921-26 4c. green, overprinted "Specimen", showing constant **variety broken "M"** large part original gum, very fresh and attractive; rare with only 7 possible examples.



70369 P 215 **200 - 300**
 1922 (Jan) two 20c. proofs of the value tablet in black on glazed cards (92x60mm.), marked "Before Striking" and "After Striking" dated "17/1/22" and "18/1/22" respectively in manuscript, fine.





- 70370**
P

215
200 - 300
- 1922 (Jan) two 10c. proofs of the value tablet in black on glazed cards (92x60mm.), marked "Before Striking" and "After Striking" dated "16/1/22" and "17/1/22" respectively in manuscript, fine.
- 70371**
* S

215s
80 - 120
- 1921-26 10c. grey, overprinted "Specimen", showing constant **variety broken "M"** large part original gum, very fresh and attractive; rare with only 7 possible examples.
- 70372**
* S

220s
80 - 120
- 1921-26 20c. blue, overprinted "Specimen", showing constant **variety broken "M"** large part original gum, very fresh and attractive; rare with only 7 possible examples.



- 70373**
P

222
700 - 1'000
- 1921-26 Arms issue, The Unique imperforate 50r. dull purple and green, attached to Part Appendix Sheet endorsed "29th April 1924/ Mauritius reqd 2839" and again endorsed below "approved (Signed "Initialled") "30/4/24" also including two issued Stamps overprinted "SPECIMEN", one overprinted in serifed capitals diagonally, the other type D167; a very rare and most attractive group.



- 70374** P 222 **150 - 200**
 1921-26 Arms issue, 50 Rupees, stamp size master die proof with blank value tablet in black on glazed card, dated "11 Dec 96". Scarce. Ex: Robert Marion, November 2013 (Lot 4357).



70375



70376



70378

- 70375** * S 222 **100 - 150**
 1921-26 50r. dull purple and green, overprinted with a bold local serifed "SPECIMEN" of a type unknown to Samuel; large part OG. Rare (S.G.222s, £400).
- 70376** * 222 **200 - 300**
 1921-26 50R Dull Purple & Green, large part OG; very fresh and fine. Cert B.P.A. (2007) (S.G.222, £950).



- 70377** ☉ 222 **1'500 - 2'000**
 1924 50r. dull purple and green; fine used; exceedingly rare postally used (S.G.222, £4'250).
- 70378** * S 222s **100 - 150**
 1921-26 50R Dull Purple & Green overprinted SPECIMEN, fine mint.(S.G.222s, £400).

You can view our catalogues and bid during the auction
 via our website, www.davidfeldman.com



70379

E

223

2'000 - 3'000

1926, two pieces cut from the De La Rue appendix pages bearing 8 different 1c. perforated colour trials for the 8 new values in 1926, each with the value of the issued stamp written alongside, both pieces endorsed "Appd for colour 19/7/26" two very important keyplate issue pieces. Very rare. Ex De La Rue Archive.



70380

P

223

200 - 300

1926 (Jun) two 1c. proofs of the value tablet and name in black on glazed cards (92x60mm.), marked "Before Hardening" and "After Striking" and dated "1 Jun 1926" in blue, the later dated "11.9.26" in manuscript; fine.



70381 S 223/232a 400 - 500

1921-34 1c. to 20c. set of nine values in strips of three being the new issues made in 1926, each overprinted SPECIMEN and affixed to Madagascar UPU receiving authority ledger page pieces and hand stamped "POSTES ET TELEGRAPHES/COLLECTION/DE BERNE/MADAGASCAR" Rare.

70382 * 223/236 100 - 150

1921-34 KGV key type, wmk. multiple Script CA. 1c to 25c group of 25 upper or lower marginal copies, all showing plate numbers in margins. 1c '17', 2c '16', '17', '21', 3c '16', '17', '21', 4c '16', '17', '21', 5c '11', '16', '17', '21', 6c '16', 8c '17', 10c '16', '17', '21', 12c '10', 12c '17', 15c '18', 20c '16' and 25c '16', '18'. Very fine mint or unmounted. A remarkable and very difficult assembly. SG between 223-236.

70383 * S 223s-241s 200 - 300

1921-34 1c. to 5r. fifteen values in horizontal pairs overprinted "SPECIMEN", large part to full OG; the odd imperfections, though mostly very fine and fresh. Ex Koh i Noor.



70384 P 224 200 - 300

1926 (Jun) two 2c. proofs of the value tablet and name in black on glazed cards (92x60mm.), marked "Before Hardening" and "After Striking" and dated "1 Jun 1926" in blue, the later dated "11.9.26" in manuscript. fine.



70385 * 224var 1'000 - 1'500

1921-34 2c. brown, die II, mint nh horizontal strip of three showing major misplacement of duty tablets, a superb and very visually appealing variety. Rare. Ex Baillie.

You may bid live by Internet at www.davidfeldman.com



70386 P 226 200 - 300
 1926 (Aug) two 4c. proofs of the value tablet and name in black on glazed cards (92x60mm.), marked "Before Hardening" and "After Striking" the later dated "11.9.26". fine.



70387 P 227/238 150 - 200
 1923 5c, 12c., 25c, 50c. and 1r. stamp size die proofs of the value tablet and name in black, on glazed card mounted on two pieces of cut from the day book, endorsed with the number of leads and dated. Scarce.



70388 P 229 100 - 150
 1926 (?) 8c. proof of the value tablet and name in black on glazed card (92x60mm.), marked "Before Hardening" and undated. fine.

70389 P 230 100 - 150
 1926 (Aug) 10c. proof of the value tablet and name in black on glazed card (92x60mm.), marked "Before Hardening" and dated "4 Aug 1926" in blue; fine.



70390



70391

- | | | | |
|---|---|------|-------------|
| 70390 | P | 232b | 700 - 1'000 |
| 1935 12c. imperforate colour trial in grey, on glazed paper, marked "appd. 25/11", and dated "22.11.35" at upper right and endorsed "Mauritius 5327."; superb. | | | |
| 70391 | P | 232b | 300 - 400 |
| 1934 12c. Type B imperforate colour trial in grey, affixed to piece (93x62mm.) marked "appd. for colour", initialled and dated "13.12.33"; superb. | | | |
| 70392 | P | 232b | 150 - 200 |
| 1933 12c. die proof of the value tablet and name in black on glazed card (92x60mm), marked "Approved 17/11, and dated "16.11.33" at lower right and endorsed "Reqn G/4886"; scarce. | | | |



70393



70394

- | | | | |
|---|---|-----|-------------|
| 70393 | P | 233 | 700 - 1'000 |
| 1931 15c. imperforate colour trial in blue, on glazed paper, marked "ok 6/11", and dated "5.11.31" at lower left and endorsed "Requ 4438."; superb. | | | |
| 70394 | P | 233 | 700 - 1'000 |
| 1931 15c. die proof in light blue, on thick laid surfaced paper, marked dated "5.11.31" at lower left and endorsed "Requ 4438."; pin holes from being pinned to a page, Superb. | | | |



70395

P

233

200 - 300

1926 (Aug) two 15c. proofs of the value tablet and name in black on glazed cards (92x60mm.), marked "Before Hardening" and "After Striking" the later dated "11.9.26". fine.



70396

P

234

200 - 300

1926 (Aug) two 20c. proofs of the value tablet and name in black on glazed cards (92x60mm.), marked "Before Hardening" and "After Striking" dated "4 Aug 1926" and "11.9.26". fine.



70398

70397

70397

P

235

300 - 400

1932 20c. Die I imperforate colour trial in Prussian blue, affixed to piece (80x62mm.) marked "appd. for colour", initialled and dated "7/4/32"; superb.

70398

P

235

300 - 400

1931 20c. die proof in blue, on thick laid surfaced paper, marked dated "25.10.33" at lower right and endorsed "Approved 26/x"; fine and most attractive.

70399 * S 236/241 **300 - 400**
 1921-34 25c., 1r. 2r 50c., 5r. and 10r. each in a horizontal strip of three, overprinted "Specimen"; large part original gum, very fresh and attractive and scarce in multiples.



70400 P 239 **150 - 200**
 1922 2r. 50c. die proof of the value tablet and name in black on glazed card (92x60mm), marked "After striking" and dated "26.11.22" at lower right. Scarce.



70401 ** * 田 241 **200 - 300**
 1921-34 10r. green and red on emerald, a lovely fresh mint block of four, virtually full OG the lower pair mint NH. A fine and scarce multiple (S.G.241, £640).



70402 * 259ba **100 - 120**
 1938 25c brown-purple right margin example showing plate error 'IJ' instead of U in Mauritius, mint light hinge trace, very fine & fresh example (S.G. £300).

Express Delivery Stamps

70403 * 田 / 136 E2 **300 - 400**
 1903 Express Delivery 15c. on 15c. ultramarine (type E2) block of 15 showing the complete setting; large part original gum (a little toned), some creasing as to be expected though not detracting from the fine appearance of this very rare multiple (S.G.E2, £975+).



70404



70405



70406



70407

- | | | | |
|---|---|-----|-------------|
| 70404 | * | E2a | 400 - 600 |
| 1903-04 15c. on 15c. ultramarine, type e2 surcharge variety A of Inland inverted, large part original gum. Rare. (S.G.E2a, £1'700). Cert. B.P.A. (2012). | | | |
| 70405 | ⊙ | E2b | 800 - 1'200 |
| 1903-04 surcharged in one operation 15c on 15c, variety INLAND inverted ; fine used. Rare. (S.G.E2b, £3'500). Cert. B.P.A. (2000). | | | |
| 70406 | ⊙ | E2b | 700 - 1'000 |
| 1903-04 surcharged in one operation 15c on 15c, variety INLAND inverted , fine used. Rare. (S.G.E2b, £3'500). Cert. B.P.A. (undated). | | | |
| 70407 | * | E3a | 400 - 600 |
| 1903-04 15c. on 15c. ultramarine, type E3 surcharge, variety surcharge inverted ; fresh mint og, spectacular and rare. (S.G. E3a, £1300.) | | | |
| Expertise: Cert. B.P.A. (2011). | | | |



70408



70409

- | | | | |
|---|---|-----|-----------|
| 70408 | △ | E3a | 300 - 400 |
| 1903-04 15c. on 15c. ultramarine, type e3 surcharge variety surcharge inverted , very fine used on piece dated with "My/9/04" cds and also bearing 1900-05 2c pair similarly cancelled. a rare and most attractive piece. Cert B.P.A. (2011). (S.G.E3a, £850). | | | |
| Expertise: Cert. B.P.A. (2011). | | | |
| 70409 | △ | E3a | 150 - 200 |
| 1903-04 surcharged in one operation 15c on 15c, variety surcharge inverted , neatly tied on piece by two c.d.s.; fine and scarce. (S.G.E3a, £850). Cert Brandon (2004). | | | |

The currency of the auction is the British pound.





70410



70411



70415

70410 ☉ E3aw 200 - 300

1903-04 surcharged in one operation 15c on 15c, **variety surcharge and watermark inverted**; fine used. Rare. (S.G.E3aw, £1'200) Cert B.P.A. (2015).

70411 ☉ E3b 400 - 600

1903-04 surcharged in one operation 15c on 15c, **variety surcharge double, both inverted**, fine used. Rare. Cert Brandon (1979). (S.G.E3b, £1'900).



70412



70413



70414

70412 * E3c 3'000 - 5'000

1903-04 surcharged in one operation 15c on 15c, **variety imperforate between** in a mint vertical pair, gum a little browned, though of very fresh appearance, an extremely rare variety with only **4 examples known to exist in private hands** (plus 2 more in institutions) (S.G.E3c, £10'000).

70413 * E3c 2'000 - 3'000

1903-04 surcharged in one operation 15c on 15c, **variety imperforate between** in a mint vertical pair, gum a little browned, and folded between impressions though of very fresh appearance, an extremely rare variety with only **4 examples known to exist in private hands** (plus 2 more in institutions). (S.G.E3c, £10'000). Cert. Scheller (2008).

70414 * E3c 1'500 - 2'000

1903-04 surcharged in one operation 15c on 15c, **variety imperforate between** in a mint vertical pair, unused with some original gum; vertical crease and some surface abrasions though exceptionally rare with only **4 examples known to exist in private hands** (plus 2 more in institutions). (S.G.E3c, £10'000) Cert R.P.S. (1953).

70415 * E3var 400 - 600

1903-04 surcharged in one operation 15c on 15c, **variety "A" of INLAND inverted**; fine mint with large part original gum. Rare. Cert B.P.A. (2012).



70416



70418



70419

70416

△

E4a

500 - 800

1903-04 15c. on 15c. ultramarine, type E4 surcharge, **variety Surcharge inverted**, used on piece, some perf. toning though not affecting the fine appearance. (S.G.E4a, £2000).



70417

⊙

E4b

800 - 1'200

1903-04 surcharged in one operation 15c on 15c, **variety surcharge double**; fine used. Rare. (S.G.E4b, £3'500). Cert Brandon. (2019).

70418

△

E4c

1'000 - 1'500

Express delivery 1903-04 surcharged in one operation 15c on 15c, **variety Surcharge double both inverted**; fine used, tied to small piece, very rare (S.G.E4c, £5'000) Cert R.P.S. (1970).

70419

△

E4d

500 - 800

Express delivery 1903-04 surcharged in one operation 15c on 15c, **variety "c" omitted**, fine used on piece. Rare. (S.G.E4d, £2'500) Cert. B.P.A. (1979).



70420



70421



70422

70420

*

E5a

200 - 300

1903-04 surcharged in one operation 18c. green, **variety exclamation mark for "i" in "foreign"**, large part original gum (toned), strong rich colour. Scarce.(S.G.E5a, £750).

70421

*

E6a

300 - 500

1904 15c. grey-green, type E3 surcharge, **variety surcharge inverted**, brilliant mint og, a rarity in this exceptional condition, with most known examples toned.(S.G.E6a, £1200). Cert. David Brandon (2000).

70422 * / 133 E6a 300 - 400
 1903-04 surcharged in one operation 15c. grey-green, **variety surcharge inverted**, part original gum. Scarce. (S.G.E6a, £950) Cert R.P.S. (2002).



70423



70424



70425



70426

70423 ☉ E6a 200 - 300
 1903-04 surcharged in one operation 15c. grey-green, **variety surcharge inverted**, fine used; (S.G.E6a, £800).

70424 * E6b 300 - 400
 1903-04 15c. grey green, type e3 surcharge variety surcharge double, fine mint with large part og. fine and fresh. (S.G.E6b, £750).

Expertise: Cert. B.P.A. (2014).

70425 * E6c 300 - 400
 1903-04 surcharged in one operation 15c. grey-green, **variety surcharge double one "lniand"** (very closely spaced), fresh with large part original gum. Scarce. (S.G.E6c, £1'200) Cert. B.P.A. (2004).

70426 ☉ E6c 200 - 300
 1904 15c. grey-green, type e3, **variety surcharge double, one "LNIAND"**, centrally cancelled by "No/11/05" c.d.s. Characteristic insignificant blemishes, very rare. (S.G.E6c, £800).

AN OUTSTANDING COLLECTION OF THE EXPRESS DELIVERY ISSUES ON COVER



70427 ✉ Collection E2 3'000 - 4'000
 1903 Express Delivery, An extensive specialised and superb array of covers forming the the potential of a wonderful exhibit. The collection displays 28 covers or cards, going to multiple destinations including local usage, Egypt, Britain and France, some wonderfully fresh and attractive mixed frankings, and all but 10 benefitting from Certificates; an extremely rare group.

Mauritius Used in Seychelles (B64)70428 



60 - 100

1860-78 9d dull purple SG Z10, 6d dull violet SG Z21 and 4c on 1d bistre SG Z38, each with 'B64' postmark, fine (S.G. £725).

70429 

2'000 - 3'000

1863 (Aug) envelope from Seychelles to India with 1859-61 6d blue imperf. (fine to large margins, small scissor incision at top left corner) and 1860-63 2d blue, each tied by "B64" numerals, with Seychelles despatch adjacent along with Bombay arrival and "1" in circle hs.

70430  

S.G. Z10

5'000 - 8'000

1870 (Jun 7) envelope from Seychelles to Utah, USA, with Mauritius 1860-63 9d block of four tied by very good strikes of the "B64" barred ovals, reverse with two Seychelles despatch cds (one with inverted code B), with London transit along with New York entry and "4" charge hs, envelope with some minor cosmetic reparations with the block having been folded over the edge for sending and the envelope since refolded to improve its appearance. **A rare double rate usage, and a showpiece item of Mauritius used in the Seychelles.**



70360



70403



70433ex1



70433ex2



70435ex1



70435ex2



70431



105

1'000 - 1'500

1888 (May 25) Govt. House envelope (logo on backflap) from Seychelles to the UK with 1883-94 16c pair cancelled by B64 numerals, despatch cds adjacent, reverse with Aden transit and London arrival cds, some minor toning, fine. Ex: South



70432

1'200 - 1'500

1860-90, Used collection of Mauritius used in Seychelles on album pages, incl. a spectacular piece with 18 stamps from the 1878-90 issues lightly cancelled by "B63" numerals (cert. RPS 2014), also 1860-63 9d, 1862 6d slate (cert. BPA 2002), 1863-72 1d, 2d pale and bright blues, 1s orange, 1878 issues incl. 4c on 1d (cert. BPA 2022) and 2R50c on 1s, etc., a very good lot of these difficult to find stamps (S.G. £3'600+).

Collections

- | | | |
|--|--------------------|------------------|
| 70433 | ✉ Collection / 136 | 600 - 800 |
| <p>1840s and 1850s, group of twenty letters, incoming (from India) and outgoing, many stamped by oval "packet letter Mauritius" and Madras GPO, with a good range of endorsements and routings. Also good ship letters on 8 exhibition pages with thorough analysis, many with Mauritius GPO crown handstamp. A great lot with much to study, and with interesting documentation, such as duplicate letters and different rates, most of material stemming from the Pison Bell & Co. correspondence. Generally good condition but with the usual archival folds and ink corrosion so typical of the epoch.</p> | | |
| 70434 | ☉ ✉ Collection | 200 - 300 |
| <p>1849-1913 Attractive accumulation of eight covers and an array of stamps with some useful cancels including the scarce "B64" of Seychelles, mostly from the De La Rue issues, some faults, mixed to fine (90+ stamps & 8 covers).</p> | | |
| 70435 | ✉ Collection / 136 | 200 - 300 |
| <p>1862-1910 Postal Stationery: Attractive accumulation of thirty-four unused stationery envelopes, showing 1873 10d on linen paper without watermark, plus a few overprinted Cancelled etc., fine to very fine (34).</p> | | |
| 70436 | * ☉ Collection | 150 - 200 |
| <p>1863-94, group of 12 DLR stamps with inverted watermarks incl. used 1863-72 1d, 3d, 6d, 1s yellow, 1s blue, 1s orange, 5s rosy mauve, 5s bright mauve (straight edge), 1877 1/2d on 10 used, 1878 2c mint and 1883-94 15c used, mixed condition, a very difficult group (S.G. £1'050).</p> | | |

Symbols and Condition

Symboles et Condition / Symbole und Erhaltung

Symbols / Symboles / Symbole

*	mint with original gum <i>neuf avec gomme / ungebraucht mit Falz</i>
**	mint never hinged <i>neuf avec gomme intacte / postfrisch</i>
(*)	unused, un gummed or regummed <i>neuf sans gomme ou regommé / ungebraucht ohne Gummi oder nachgummiert</i>
⊙	used <i>oblitéré / gebraucht</i>
⊞	block of four or larger <i>multiple / Viererblock</i>
∩	tête-bêche pair <i>paire tête-bêche / Kehdruckpaar</i>
⊗	fiscal cancel <i>oblitération fiscale / fiskalische Entwertung</i>
△	piece or fragment of a cover or document <i>fragment / Briefstück</i>
✉	cover or postcard incl. postal stationery <i>lettre, carte postale ou entier / Brief, Postkarte oder Ganzsache</i>
E	essay <i>essai / Entwurf</i>
P	proof (incl. die, plate or trial colour) <i>épreuve / Probedruck</i>
R	revenue or fiscal <i>timbre fiscal / Gebührenmarken</i>
S	specimen <i>spécimen / Specimen</i>
F	forgery <i>faux / Fälschung</i>

Condition of Covers / Condition des lettres et entiers / Erhaltung von Briefen

Extremely fine / Superbe / Prachterhaltung

Outstanding, the envelope with only slight wear, fresh stamp and cancel.
/ Qualité irréprochable, l'enveloppe ne présente que de très légères traces d'usure, le timbre est frais et l'oblitération est propre. / Herausragende Qualität, Brief mit minimalen Gebrauchsspuren (Archivqualität), frische Marken und sehr klarer Stempel.

Very fine / Très beau / Sehr schön

Choice condition, the envelope shows typical slight soiling or wear from usage.
/ Qualité premier choix, l'enveloppe peu néanmoins présenter quelques légères salissures et usures. / 1.Wahl, Brief zeigt nur typische leichte Gebrauchsspuren.

Fine to very fine / Beau à très beau / Schön bis sehr schön

Normal condition, the envelope shows a bit heavier wear or soiling.
/ Qualité standard, les traces d'usures sont un peu plus prononcées. / Gewöhnliche aber noch einwandfreie Erhaltung mit etwas stärkeren Gebrauchsspuren (leicht fleckig oder andere leichtere Abnützungen).

Fine / Beau / Schön

Evident wear or other factors (see description and photo), still a presentable example.
/ Evidentes traces d'usures ainsi que d'autres facteurs (voir photo et description) mais exemplaire très présentable. / Offensichtliche Gebrauchsspuren oder andere Mängel (siehe Beschreibung und/oder photo bzw. scan) aber noch immer herzeigbare und sammelwürdige Qualität bzw. Erhaltung.

Please note: Light edge wear, top backflap faults, slight reductions at one side, and file folds are normal for 19th Century covers. Also normal are light cleaning or minor stains and small mends along the edges. They are to be expected and are not always described, and are not grounds for return, nor are factors visible in the illustrations. We will gladly provide full-size scans on request.

Prrière de noter : De légères traces d'usures, défauts au rabat, de légères réductions sur un côté et des plis d'archives sont des caractéristiques normales pour des lettres du 19^{ème} siècle. De légères améliorations au niveau de la propreté ainsi qu'un éventuel ajout de quelques renforts sont également acceptables et ne figurent pas nécessairement dans les descriptions. Ces points ainsi que tous les éléments visibles au niveau de l'illustration ne peuvent par conséquent pas être sujets à réclamation. Des scans supplémentaires d'une pièce peuvent être envoyés sur simple demande.

Bitte beachten: Leichte Eckabnützungen, Mängel der Absenderklappe, leichte Reduktionen an einer Seite und Archivierungsbügel sind als normal für Briefe des 19.Jhdts. anzusehen, ebenso gelten als «normal» leichte Reinigung, kleine (minimale) Stockflecken oder Risschen und Bügel entlang der Briefkanten - diese sind zu erwarten, zu akzeptieren und nicht immer beschrieben (zumeist aber am photo und/oder scan ersichtlich) - diese stellen daher keine Grundlage für Retournierungen dar, ebenso wie auf den photos resp. scans klar ersichtliche Faktoren - Fotos und scans sind immer auch Teil der Beschreibung Im Zweifel können Sie von uns VOR DER Auktion jederzeit Photokopien oder besser auflösende scans verlangen und werden wir Ihnen diese gerne zusenden bzw. mailen.



Consign your collectables with a reliable partner

Valuations are free and non-binding



1. Contact our specialists

Contact our specialists by phone or email to discuss your needs and to request an estimate of your collectables.



2. Send us your collectables

We organise express, tracked, and secure shipping from your home directly to us. Your items are fully insured.



3. Follow the process

Your collectables are lotted, described, and estimated by our specialists. We promote your treasures to our worldwide client list.



4. Get paid quickly

You are usually paid within 6 weeks after the auction in the method most convenient to you.

Contact our specialists today to make an appointment by phone or email



David Feldman
International Auctioneers

Tel +41 22 727 07 77

info@davidfeldman.com



www.davidfeldman.com

Conditions of Sale

1. By participating, registering, or obtaining a bidder number in one of David Feldman S.A.'s auctions, one agrees to be bound by the terms and conditions set out below and by the rights and obligations arising therefrom. These same terms and conditions apply to all transactions relating to lots forming part of the auction or concluded outside the auction. DAVID FELDMAN S.A., organiser of this auction, acts exclusively as agent and therefore assumes no liability whatsoever in the event of default(s) by buyers and/or sellers. **The auction is conducted in the name and on behalf of third-party sellers who are directly responsible to the exclusion of DAVID FELDMAN S.A.**

1.1 Lots are offered for sale based on their presentation in the catalogue and/or on the website: Lots are described with the utmost care but without engaging the responsibility of DAVID FELDMAN S.A. Photographs form an integral part of the descriptions.

1.2 There is no responsibility as to the condition of lots with a value of less than CHF 1'500 or its equivalent in other currencies. The catalogue may mention damage to the lots sold but does not draw up an exhaustive list. Bidders may consult the lot condition report, where available, either on the Internet or on request. Lots marked with a square next to the lot number are subject to federal control of precious metals (CMP), whose report is available on request.

1.3 DAVID FELDMAN SA organises one or more lot presentation days at a location in the Canton of Geneva or elsewhere, prior to the sale, where buyers or their agents may examine all lots at the times indicated in the sale catalogue or on our website.

1.4 Buyers have had the opportunity to examine the lots prior to the sale and are deemed to have examined all the lots purchased and to accept them in the condition in which they are found at the time of the auction, irrespective of the description given in the catalogue. This description is given as an opinion only and does not constitute any guarantee as to the authenticity of the items sold. **Except in the case of a prior agreement with David Feldman SA, no claims will be accepted; lots are sold as is.** However, in the context of the sale of philatelic items, clause 3.10 applies.

2. Auction bids

2.1 Each bid must be higher than the previous bid according to at least the following scale: (the currency may change depending on the auction). Unless otherwise indicated in the catalogue and on the website, the Swiss franc is presumed to be the currency of the sale.

50 - 100:	5	10'000 – 20'000:	1'000
100 - 200:	10	20'000 – 50'000:	2'000
200 - 500:	20	50'000 – 100'000:	5'000
500 – 1,000:	50	100'000 – 200'000:	10'000
1'000 – 2'000:	100	200'000 – 500'000:	20'000
2'000 – 5'000:	200	500'000 – 1'000'000:	50'000
5,000 - 10'000:	500	1'000'000 or more:	100'000

Bids between these amounts will be rounded up to the next higher bid.

2.2 Every bid constitutes a binding and irrevocable offer; the bidder remains committed to his/her offer until it is expressly overbid or declined by the auctioneer.

2.3 Double bids are notified immediately, and the bidding process is restarted; if no higher bid is made, the auction is decided by a draw; for equivalent bids from bidders present and absent, priority is given to the written bidder or to the bidder personally present in the case of a telephone bid.

2.4 The hammer price may, exceptionally, be reduced to the lowest winning bid if it is established that the same bidder has inadvertently increased the price by using more than one bidding method.

2.5 Telephone bids are only accepted if the bidders have registered in advance to bid in this way and are known to DAVID FELDMAN S.A. who has

been able to check their solvency. Buyers are charged an administrative fee.

2.6 Only buyers registered with DAVID FELDMAN S.A. who have obtained a bidder number may participate in the auction. Upon request, they must provide proof of identity, address, and bank account details. Upon request, DAVID FELDMAN S.A. reserves the right to limit the maximum bidding amount to certain buyers depending on their financial capacity. For certain buyers, DAVID FELDMAN S.A. may even require the prior deposit of a financial guarantee by credit card or bank transfer.

2.7 Written bids received by DAVID FELDMAN S.A. or on the website prior to the sale take precedence in all cases over bids made in the auction room. They are firm and final. Bidders giving a written bidding order may make alternative bids and/or limit the total amount of their bids. Bids given "to buy" may not exceed more than 10 times the value of the high estimate printed in the catalogue.

2.8 For auctions without an auctioneer, online bids are received by DAVID FELDMAN S.A. on its website. At the end of the auction, at the precise time and minute, the lot is awarded to the highest bidder, at one step above the next highest bid. If the last bidder has bid in the last fifteen seconds of the sale, the auction for this lot is extended by fifteen seconds from the time the last bid was received.

2.9 All written bids are considered binding for 60 days after the auction date. DAVID FELDMAN S.A. is therefore entitled to invoice the bidder for the goods until the expiry of this period. Any invoice received by the bidder is therefore valid and must be paid immediately.

2.10 DAVID FELDMAN S.A. has the right to refuse bids, to separate, join or withdraw any lot at its sole discretion. The sale will be conducted in English or French, but bids may be repeated in any other language. DAVID FELDMAN S.A. is also authorised to bid on behalf of sellers where reserve prices have been set. If the seller sets reserve prices for some of his/her lots, s/he will be deemed to be the buyer and DAVID FELDMAN S.A. will bid on his/her behalf up to the reserve prices set. If the price set by the seller is not reached, the next lot will be auctioned.

3 The auction sale

3.1 Auction Representatives and Agents: The bidder assumes personal responsibility for his/her bid and cannot claim that the purchase was made in the name or on behalf of a third party. The representative is jointly liable for the person s/he represents for compliance with the obligations.

This responsibility extends particularly to checking the quality of the lots purchased and to the subsequent payment of the invoice for the lots purchased.

Bidders who are personally present as representatives of third parties must communicate this unequivocally to the auction management at the latest at the time of the auction.

3.2 Winning bids: Each lot is awarded to the highest bidder on behalf of its respective seller. In addition to the hammer price, **the buyer is charged a 23% buyer's commission, plus VAT where applicable.**

VAT of 8.1% is payable by the buyer on the hammer price. For lots marked with a circle next to the lot number, VAT of 8.1% is payable on the buyer's commission only.

3.3 VAT paid may be refunded upon presentation of proof of export. DAVID FELDMAN S.A. will charge an administration fee of CHF 75.00.

Shipping costs will be invoiced separately.

Before the auction, buyers must obtain information on the administrative procedures for the export of lots and their legality. Buyers are solely responsible for any such formalities after the auction. DAVID FELDMAN S.A. can take care of this for a fee.

3.4 When the hammer falls, the profits and risks of the lots thus auctioned pass to the bidder whose bid has been accepted. However, the goods will



not be handed over to the buyer until the purchase price (hammer price plus costs and VAT, if applicable) has been paid in full. Thus, the risks are transferred at the time of the auction. Ownership passes to the buyer once the invoice has been paid in full and possession has been transferred.

3.5 At DAVID FELDMAN S.A.'s request, sales must be officially acknowledged by signature.

3.6 Payment: Successful bidders are obliged to pay the purchase price, plus VAT if applicable, and the commission in cash in the currency of the auction, against surrender of the goods purchased, within a maximum of 5 days of the auction.

Fees charged to DAVID FELDMAN S.A. for credit card payments will be invoiced to the buyer. These vary from 1.5% to 5% depending on the credit card company.

Cash payments are only accepted up to CHF 100'000.

3.7 Payment arrangements: Upon prior request at least 10 days before the sale, DAVID FELDMAN S.A. may, at its own discretion, grant payment arrangements to buyers. The buyer benefiting from such arrangements will pay a minimum amount of 25% of the total invoice within a maximum of 5 days from the date of the sale and will then pay the balance in equal monthly instalments over a maximum period of 4 months. Monthly interest plus costs incurred **at the rate of 1%** is charged by and on behalf of DAVID FELDMAN SA from the date of the sale. Interest is debited monthly to the customer's account. In general, **no lot is delivered without full payment of the hammer price, the sales commission and, if applicable, VAT.**

3.8 Late payment: Payment must be made in cash as soon as the lot is sold. Any buyer who has not paid the hammer price and the commission due in full within a maximum of 5 days of the sale is already in default of payment. In the event of default by the buyer, DAVID FELDMAN S.A. reserves the right (1) to cancel the sale and dispose of the lot(s) concerned and to take legal action against the buyer in order to obtain payment of an indemnity of 23% of the hammer price and full payment of the commission due plus interest of at least 1% per month or (2) to enforce the seller's lien in accordance with the above provisions. In addition, expenses incurred by DAVID FELDMAN S.A. in the performance of its obligations hereunder shall be levied in addition on all sums due from the buyer. In addition, the defaulting debtor loses all rights of complaint.

3.9 Right of lien: Until full payment of the amounts due, the buyer grants DAVID FELDMAN S.A., acting on behalf of the Seller, a right of lien on all lots sold but not delivered. This lien guarantees the payment of any amount due past and present, such as the hammer price, the purchase commission, possible VAT, interest, and possible costs. After notice from the buyer, DAVID FELDMAN S.A. is authorised, but not obliged, to realise the pledges without further formalities and without notice if the buyer is in default for the payment of his/her debt or the fulfilment of any obligation. DAVID FELDMAN S.A. may in all cases realise the liens by mutual agreement.

To this end, DAVID FELDMAN S.A. is not obliged to comply with the procedures specified in the Federal Debt Collection and Bankruptcy Act; DAVID FELDMAN S.A. is also free to initiate or continue ordinary debt collection proceedings without first realising the liens and without thereby waiving them.

If the realisation of the lien does not cover the amounts owed by the Buyer, DAVID FELDMAN S.A. is entitled to sue the Buyer for the difference.

3.10 Appraisal or counter-appraisal in the context of the sale of philatelic items only: DAVID FELDMAN S.A. may attach an appraisal to the description of philatelic items, the report of which forms an integral part of the description of the lots, which may be obtained on request. When the authenticity of a lot of philatelic objects is contested, the buyer must produce a certificate of expertise or counter-expertise from

a qualified expert justifying his/her claim, within 30 days of the date of the auction. If the recognised expert, who assumes all responsibility in the event of error, deems that the item has been falsified, s/he may mark it accordingly; the signs "FAKE" or "FORGED" do not then constitute an alteration to the batch of philatelic items.

In the event of such a claim, DAVID FELDMAN S.A. reserves the right to request, at its discretion, one or more subsequent expert appraisals, the costs of which will be borne by the seller if the buyer's claim is well-founded. If the buyer's claim is unfounded, the buyer will bear all the costs incurred. If the claim is well-founded, the lot of philatelic objects will be taken back, and the auction price and commission will be reimbursed in full to the buyer. In the event of delayed payment due to an appraisal approved by David Feldman S.A., interest is payable at 50% of the usual rate for any lot of philatelic objects whose authenticity is confirmed. If David Feldman S.A. does not agree, all interest will be due.

Buyers may request an extension for certification at the time of the adjudication only. For lots with a hammer price of 5'000 or more in the currency of the auction, DFSA will charge a flat handling fee of CHF 100 per item, plus the cost of the certificate. For all other lots DFSA will charge a flat handling fee of CHF 200 per item, plus the cost of the certificate.

3.11 Limits of the guarantee: Batch items described as collections, selections, or groups, those consisting of duplicates and accumulations, cannot be the subject of any claim whatsoever. Claims concerning lots of items described as sets or groups of sets containing more than one stamp will only be considered within the limits of the above article if they relate to more than one third of the total acquisition value of the lot. Lots of items which have been examined by the purchaser or his/her agent, as well as lots of philatelic items which are described as having defects, may not be the subject of any claim in respect thereof. No claim may be made in respect of perforation, centring, margins, or any other feature visible in the illustration of any illustrated batch of items.

3.12 All lots awarded must be removed after the auction by the purchasers within 5 days, at the purchasers' cost and expense. No lot may be picked up during the auction. Lots not picked up will be stored at the buyers' expense for a maximum of 6 months. After this period, the lots will become the property of DAVID FELDMAN S.A., without eliminating the buyers' financial obligations hereunder.

Upon request, DAVID FELDMAN S.A. directly or through a third party, can arrange transport or delivery against payment of this service in advance. Under no circumstances will DAVID FELDMAN S.A. or the third party be liable for any damage to or loss of the items during transport or delivery.

4 Applicable law and jurisdiction

The present auction and all legal relationships arising from it shall be subject exclusively to Swiss law. Any legal action or proceedings relating to the auction and the legal relationships arising therefrom shall be subject to the exclusive jurisdiction of the courts of Geneva, subject to appeal to the Swiss Federal Court in Lausanne. In any case, DAVID FELDMAN S.A. reserves the right to sue any defaulting buyer at his/her place of residence, in which case Swiss Law remains applicable.

5 Miscellaneous

These General Terms and Conditions of Sale apply to all purchases and sales transactions with David Feldman SA with participating bidders, even outside of auctions.

These Terms and Conditions of Sale have been drawn up in French and are accompanied by an English translation. In the event of any discrepancy between the English and French versions, the French text shall prevail.

At David Feldman International Auctioneers, we are not just about auctions; we are about elevating your philatelic experience to new heights!



Introducing our exclusive Creative Hub
– your gateway to unparalleled marketing excellence through:

- Creative Brilliance
- Strategic Marketing
- Trusted Expertise
- Attention to Detail

Experience the difference that expert marketing can make. Your stamps deserve nothing less than the best, and we are here to deliver.

David Feldman's **CREATIVE HUB**

DIGITAL MARKETING • PUBLISHING • CONTENT CREATION • ARTIFICIAL INTELLIGENCE • SOCIAL MEDIA • DESIGN • CREATIVITY • ADVERTISING & MERCHANDISING • INFORMATION TECHNOLOGY

Contact us today and let's embark on a journey to showcase your collection like never before!



**David Feldman
International Auctioneers**

Tel +41 22 727 07 77

info@davidfeldman.com



www.davidfeldman.com

Grand Auction



*Patek Philippe Aquanaut
White gold. Ref. 5168G*

WATCHES • COINS • JEWELLERY OBJETS D'ART • FURNITURE • PAINTINGS



*Ring in platinum with blue
sapphire and diamonds,
10.59 g.*



*Musical clock, from
the Louis XVI period,
attributed to P.
JAQUET-DROZ,
Neuchâtel / La Chaux-
de-Fonds, circa 1780.
Height 60 cm.*



*Macedon, Alexander III
(the Great), c. 336-323 BC,
gold double stater, 17.15 g.*



*T. Kunichira (1835-1900),
triptych depicting the
actors Yūshō, Tanosuke, and
Shikan, woodblock print,
late 19th century. 36 x 75 cm
(detail).*



*Chinese Kangxi porcelain
plate, blue and white,
depicting birds and
flowers. Diameter 35.5 cm
x depth 3.5 cm.*

December 1, 2024 – Beau Rivage Genève

Feldman
INTERNATIONAL AUCTIONS SINCE 1967

www.feldmanauctions.com



A project by:



Location

Bus stop: “**Grand-Saconnex, Susette**” just in front of the offices.

From Geneva International Airport: 5 minutes by **bus 5** until “Grand-Saconnex, Place” (direction “Thônex, Vallard”, every 10 minutes on average), then 1 minute by **bus 60** (direction “Ferney, Marie” or “Gex, L’Aiglette”, every 6 minutes).

From Cornavin Train Station: 20 minutes by **bus 60** (direction “Ferney, Marie” or “Gex, L’Aiglette”, every 6 minutes).



David Feldman
International Auctioneers

Chemin du Pavillon 2
PO Box 29
1218 Le Grand-Saconnex, Geneva

Tel +41 22 727 07 77

info@davidfeldman.com
www.davidfeldman.com



Download the **SBB Mobile** app on your mobile device to help you with tickets and transport options.

Feldman

INTERNATIONAL AUCTIONS SINCE 1967

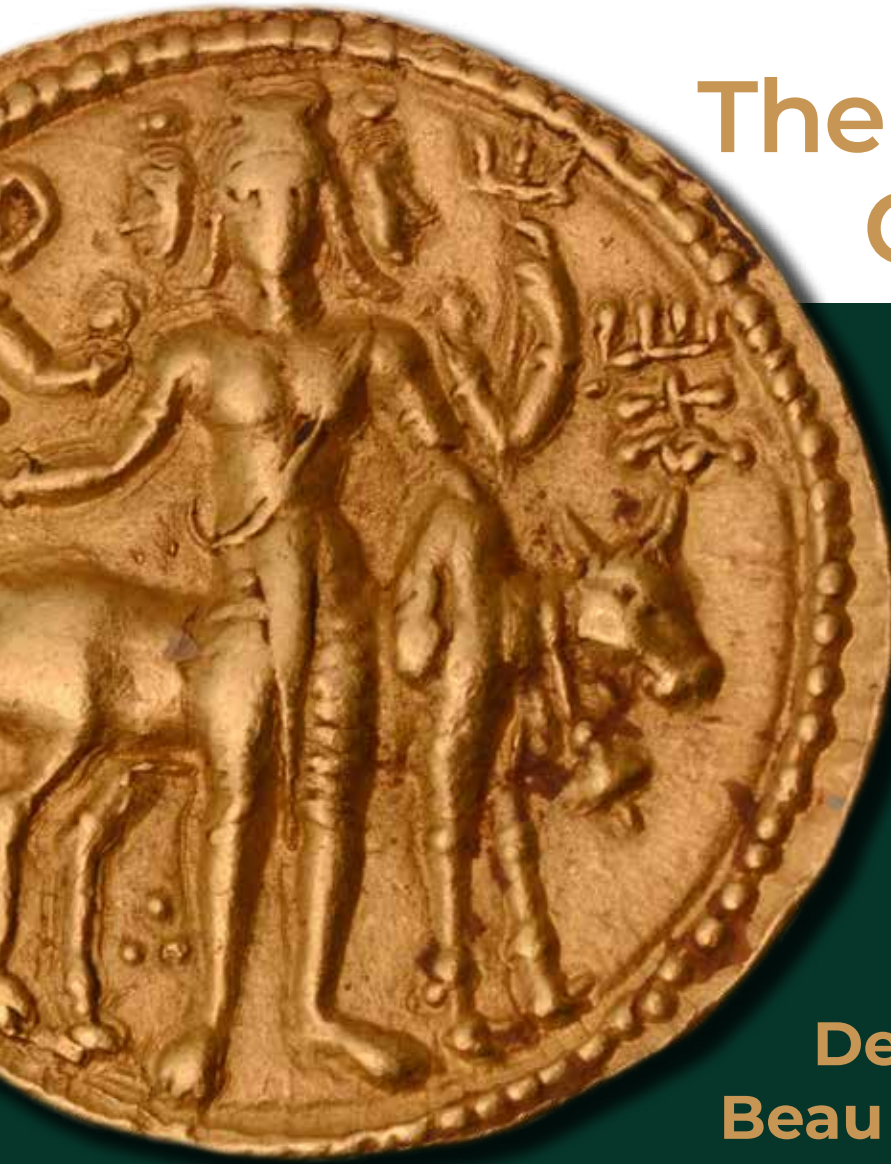
PRESENT

Vikram Chand's

The Silk Road Collection

A numismatic
journey along
the ancient
Euro-Asian
trading routes

December 1, 2024
Beau Rivage Genève



www.feldmanauctions.com



A project by:



Hotels in Geneva

Hilton Geneva Hotel and Conference Centre ****

Rte François-Peyrot 34
1218 Le Grand-Saconnex

Distance: 5 minutes walk
Room rates: from CHF 199

Tel +41 22 747 02 02
hilton.com

ibis budget Genève Palexpo Aéroport *

Route François Peyrot 28
1218 Le Grand-Saconnex

Distance: 12-minute walk
Room rates: from CHF 89

Tel +41 22 545 46 46
all.accor.com/hotel/A8F3/index.en.shtml

ibis Styles Genève Palexpo Aéroport ***

Route François-Peyrot 28
1218 Le Grand-Saconnex

Distance: 12-minute walk
Room rates: from CHF 99

Tel +41 22 545 45 45
all.accor.com/hotel/A8F2/index.en.shtml

Hôtel Astoria ***

Place Cornavin 6
1201 Geneva

Distance: 15 minutes by bus F (every 6 minutes)
Room rates: from CHF 160

Tel +41 22 544 52 52
astoria-geneve.ch

Nash Pratik Hotel ***

Chemin de la Violette 13
1216 Cointrin

Distance: 17 minutes by bus 53 (every 30 minutes)
Room rates: from CHF 75

Tel +41 22 55 299 60
nashpratikhotel.com

Hotel Auteuil Manotel ****

Rue de Lausanne 33
1201 Geneva

Distance: 17 minutes by bus F (every 6 minutes)
Room rates: from CHF 190

Tel +41 22 544 22 22
hotelauteuilgeneva.com

The Ritz-Carlton Hotel de la Paix *****

Quai du Mont-Blanc 11
1201 Geneva

Distance: 22 minutes by bus F (every 6 minutes)
Room rates: from CHF 450

Tel +41 22 908 60 00
ritzcarlton.com/geneva

Four Seasons Hotel des Bergues *****

Quai des Bergues 33
1201 Geneva

Distance: 23 minutes by bus F (every 6 minutes)
Room rates: from CHF 610

Tel +41 22 908 70 00
fourseasons.com/geneva

Hotels in France

Résidence la Réserve ****

Avenue du Jura 1
01210 Ferney-Voltaire

Distance: 6 minutes by bus F (every 6 minutes)

Room rates: from €105

Tel +33 4 50 40 30 20
residence-la-reserve.com

m3 Hotel Ferney ***

Rue de Genève 34
01210 Ferney-Voltaire

Distance: 10 minutes by bus F (every 6 minutes)

Room rates: from €105

Tel +33 9 85 60 18 30
m-3hotels.com/ferney

Appart'City Confort Genève Aéroport Ferney Voltaire ****

Avenue des Sablonnières 11
01210 Ferney-Voltaire

Distance: 13 minutes by bus F (every 6 minutes)

Room rates: from €98

Tel +33 4 50 40 22 65
appartcity.com

Appart'hôtel et Spa Odalys Ferney Genève ****

Chemin du Levant 13
01210 Ferney-Voltaire

Distance: 13 minutes by bus F (every 6 minutes)

Room rates: from €102

Tel +33 4 50 99 51 51
odalys-vacances.com

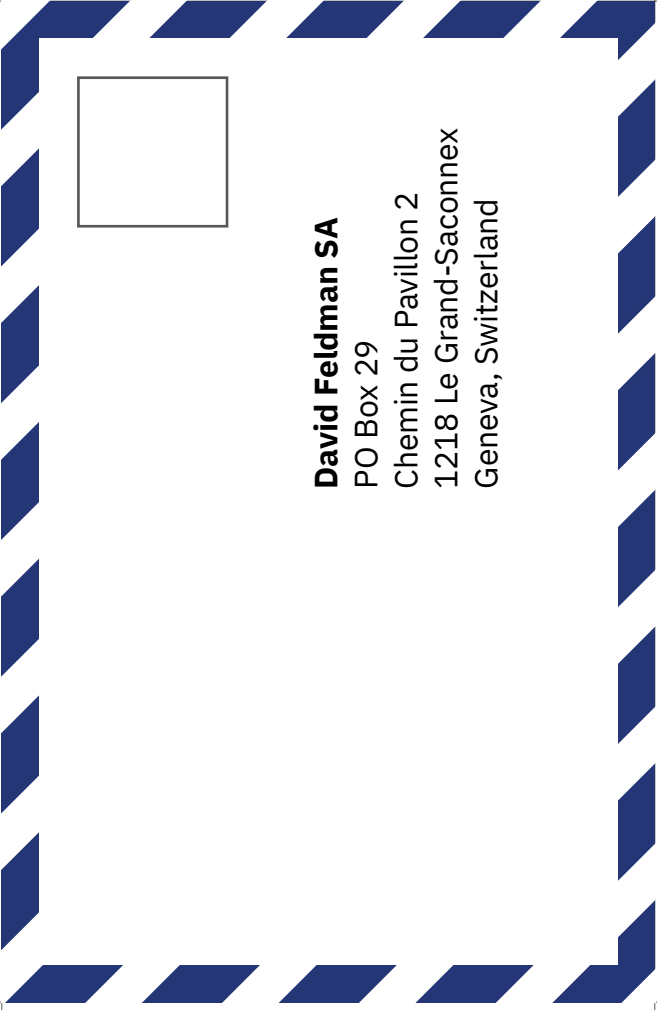
Step 1. Fold along this line, from edge to edge.

Step 2. Fold along this line, from edge to edge.

From:

.....
.....
.....
.....

Step 2. Fold along this line, from edge to edge.



Step 1. Fold along this line, from edge to edge.

