



97

1

**CORINPHILA**  
CORPORATION INTERNATIONALE DE PHILATELIE



**AUKTIONEN AG**

Los Nr. 7079

INTERNATIONALE BRIEFMARKEN-AUKTIONEN · INTERNATIONAL STAMP AUCTIONS · VENTES AUX ENCHÈRES INT. DE TIMBRES-POSTE

Bellerivestrasse 34  
CH-8034 Zürich

Telefon 01 / 383 10 60  
Fax 01 / 383 09 14



1866: 100 r blue-green (off centre) cancelled with pre-stamp cancellation from Cidade de Larangas (Larangeiras) as far we can say = unique - ex-coll. Charles Jewell.

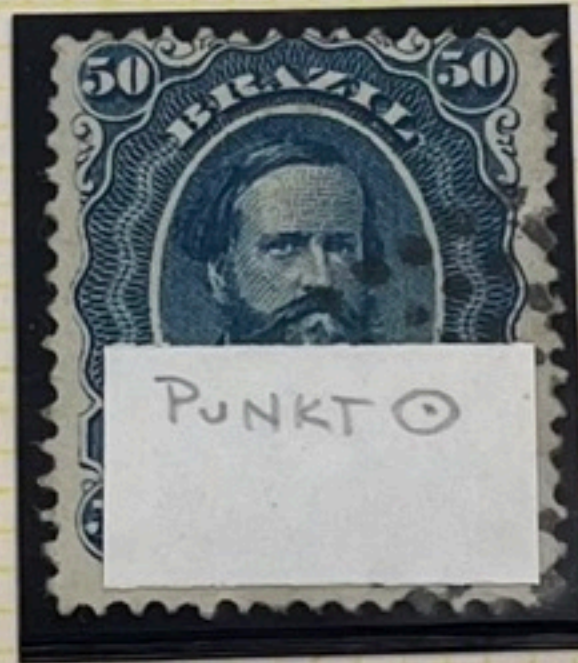
Einlieferer 1109  
4773

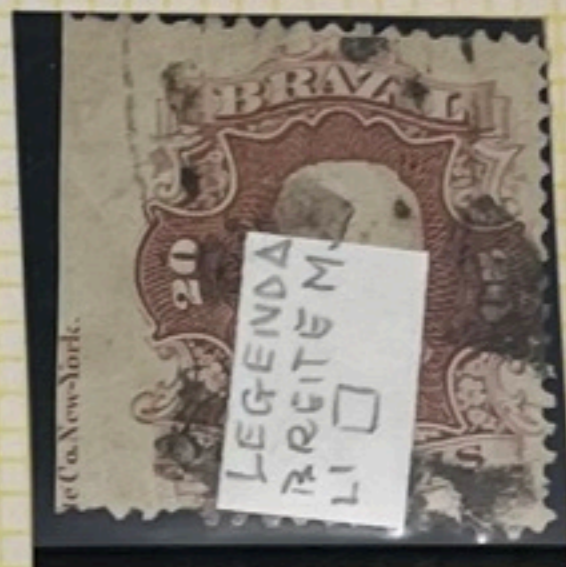
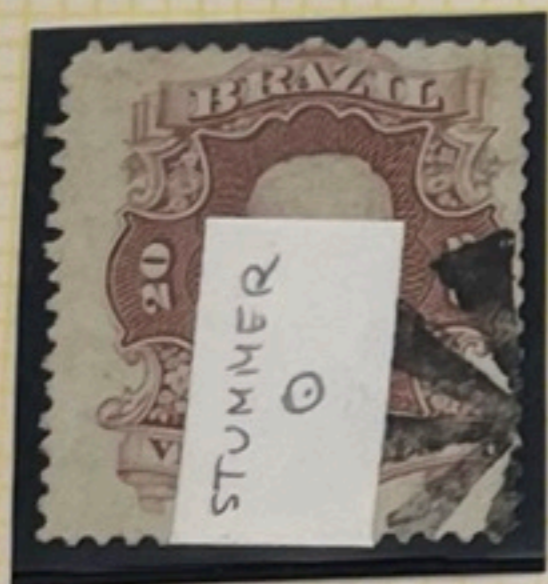
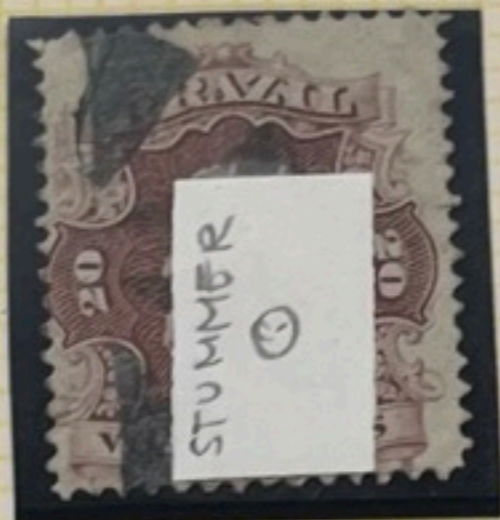
Käufer 575

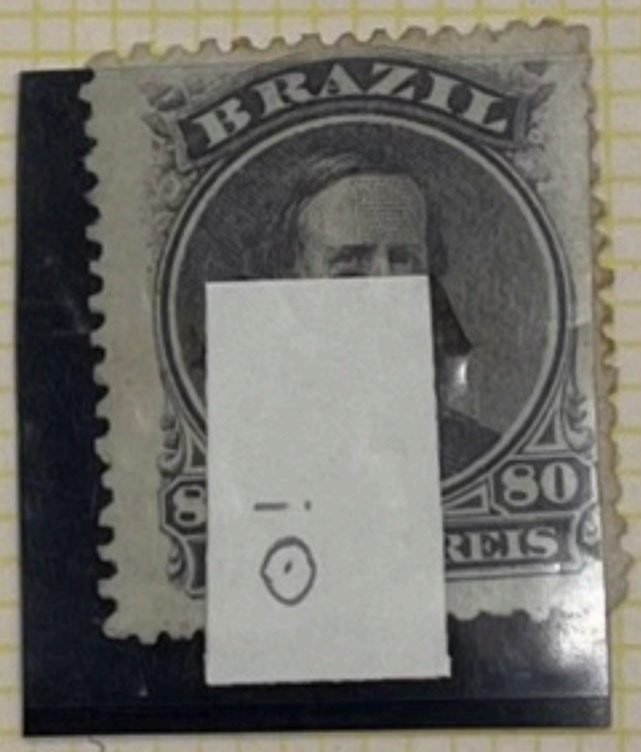
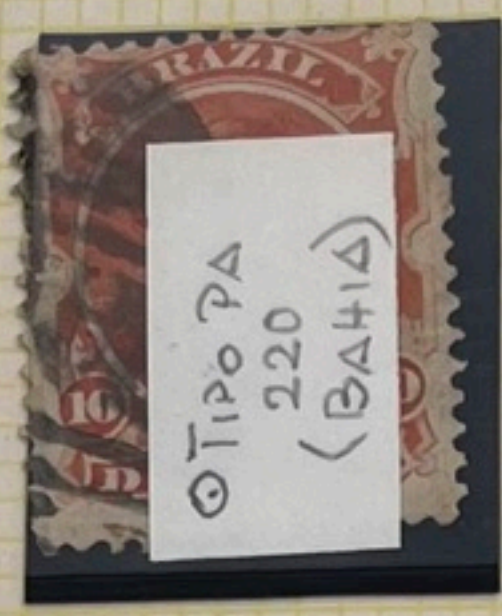
Zuschlag 140,-

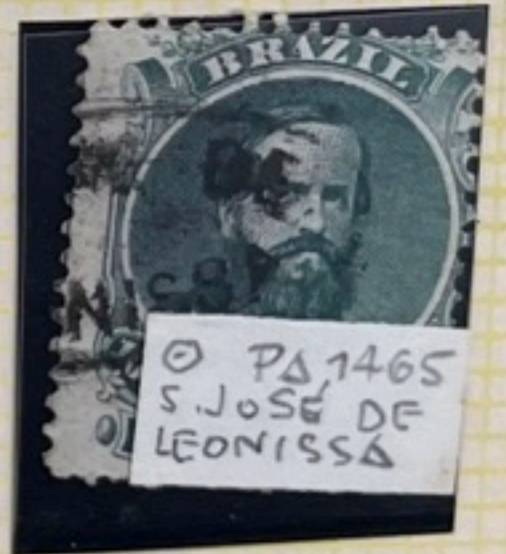
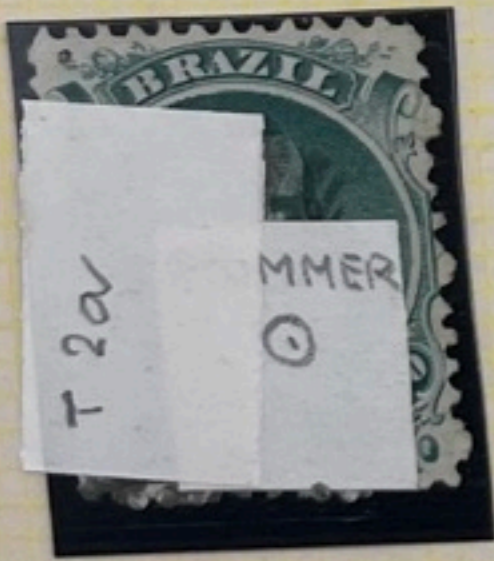
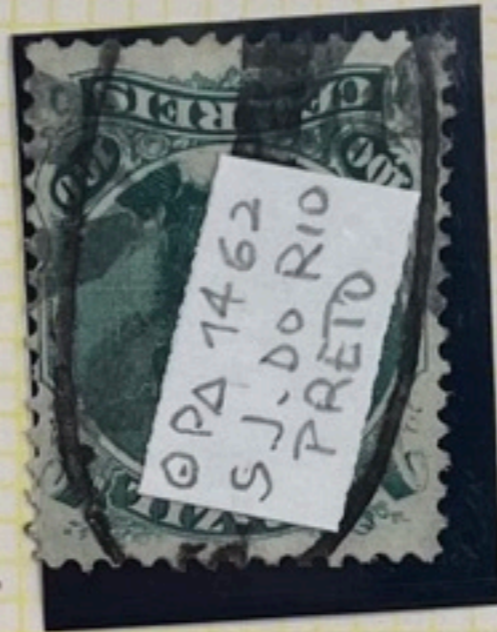
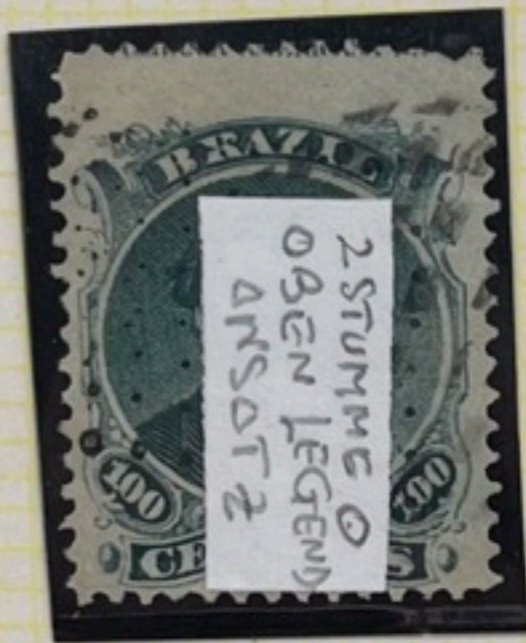
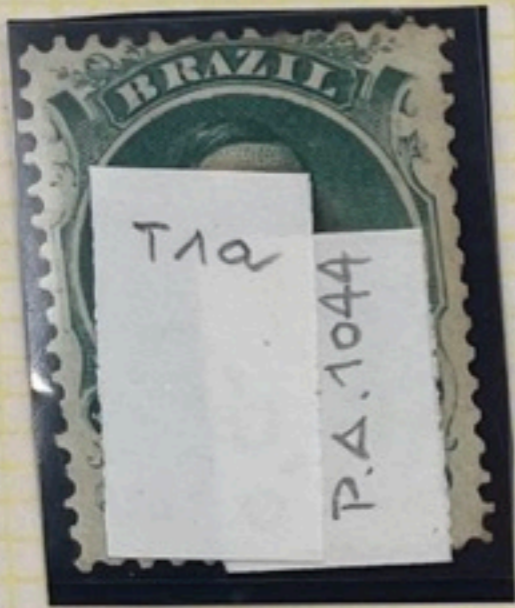
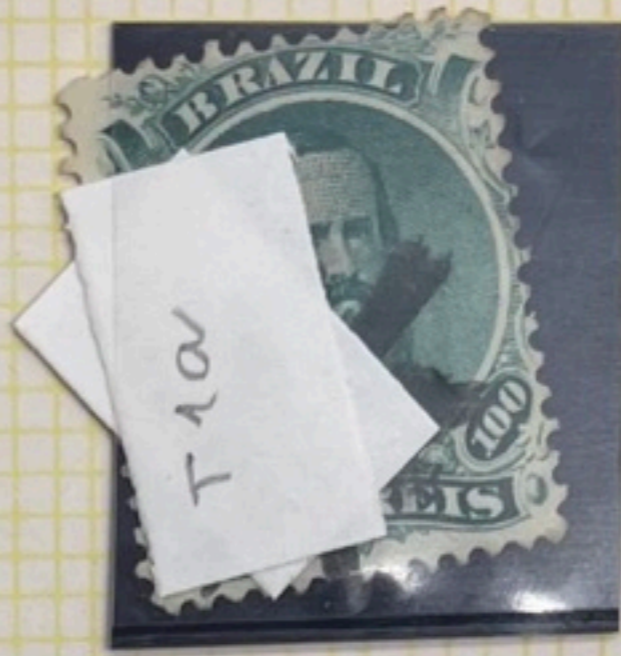
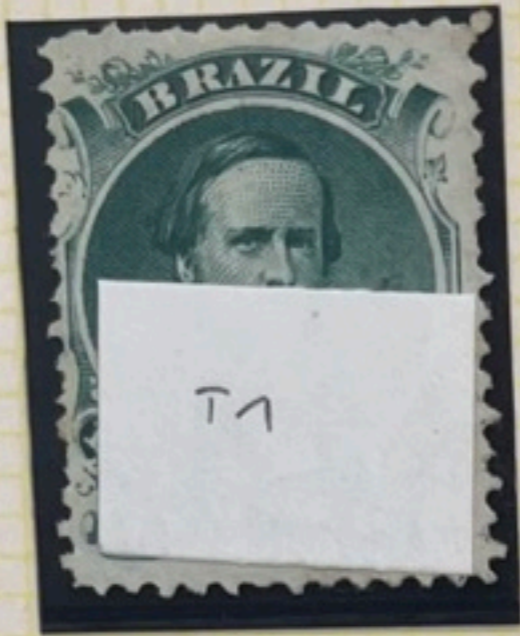
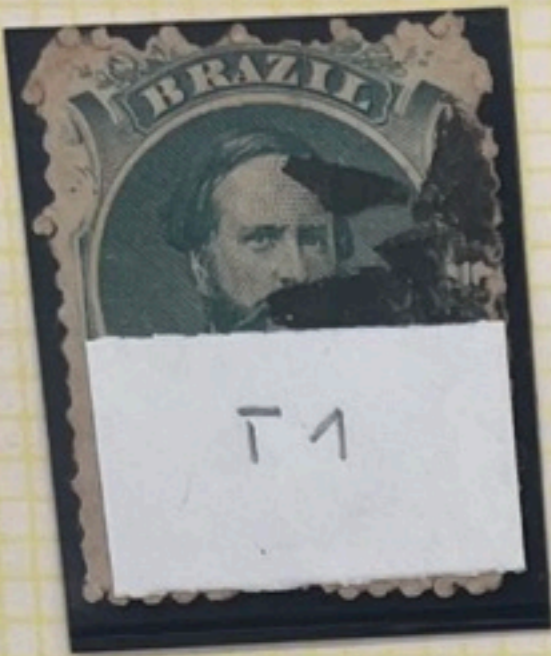
1

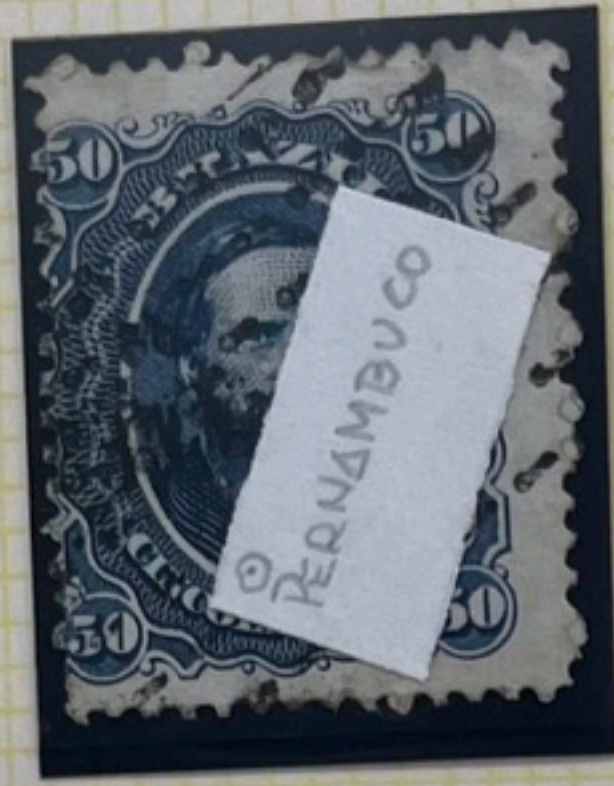








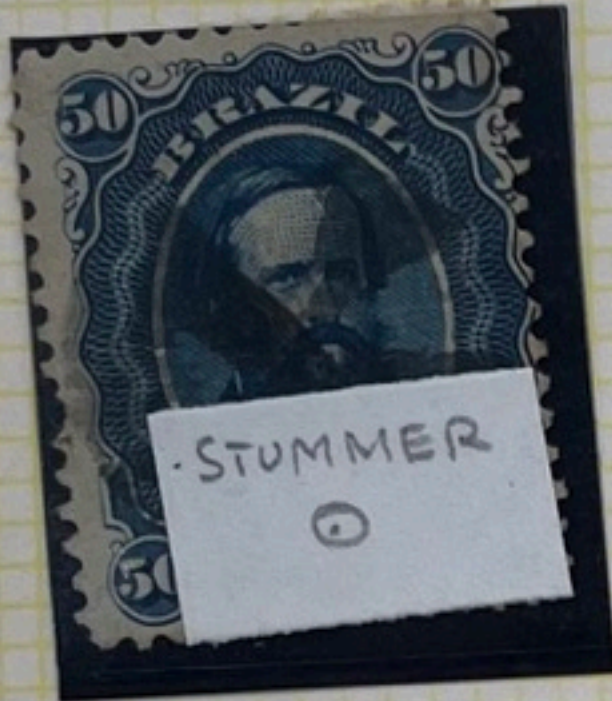




PERNAMBUCO



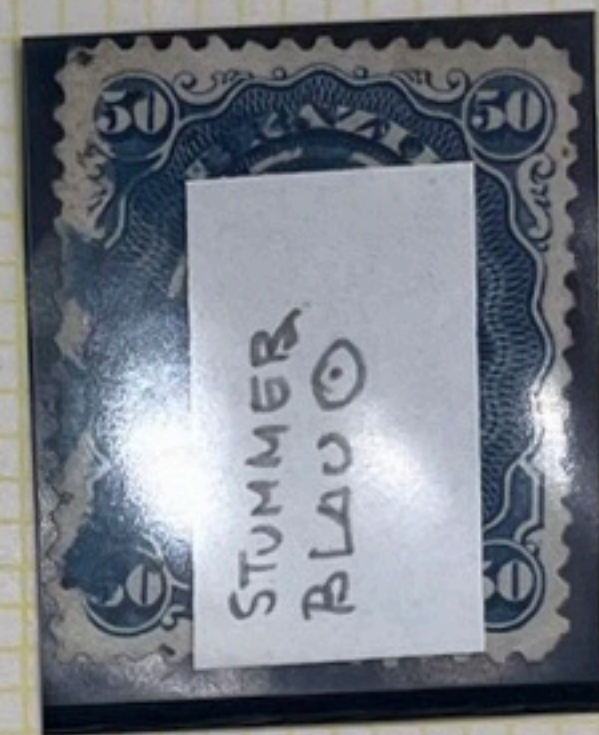
FRANZ



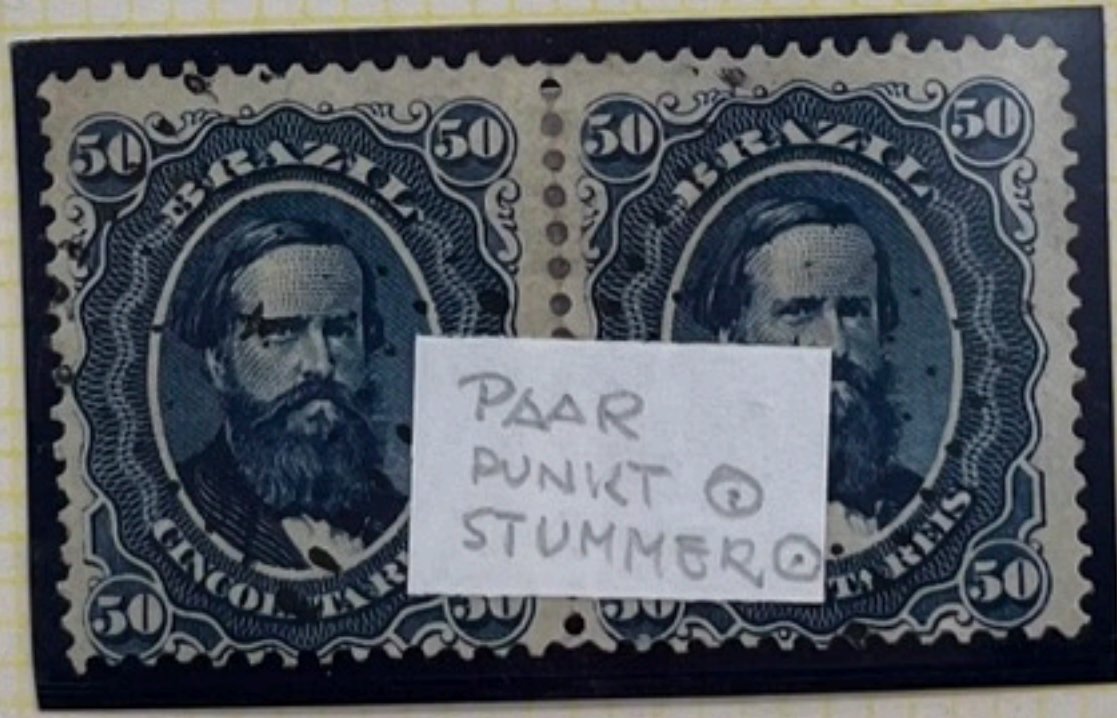
STUMMER



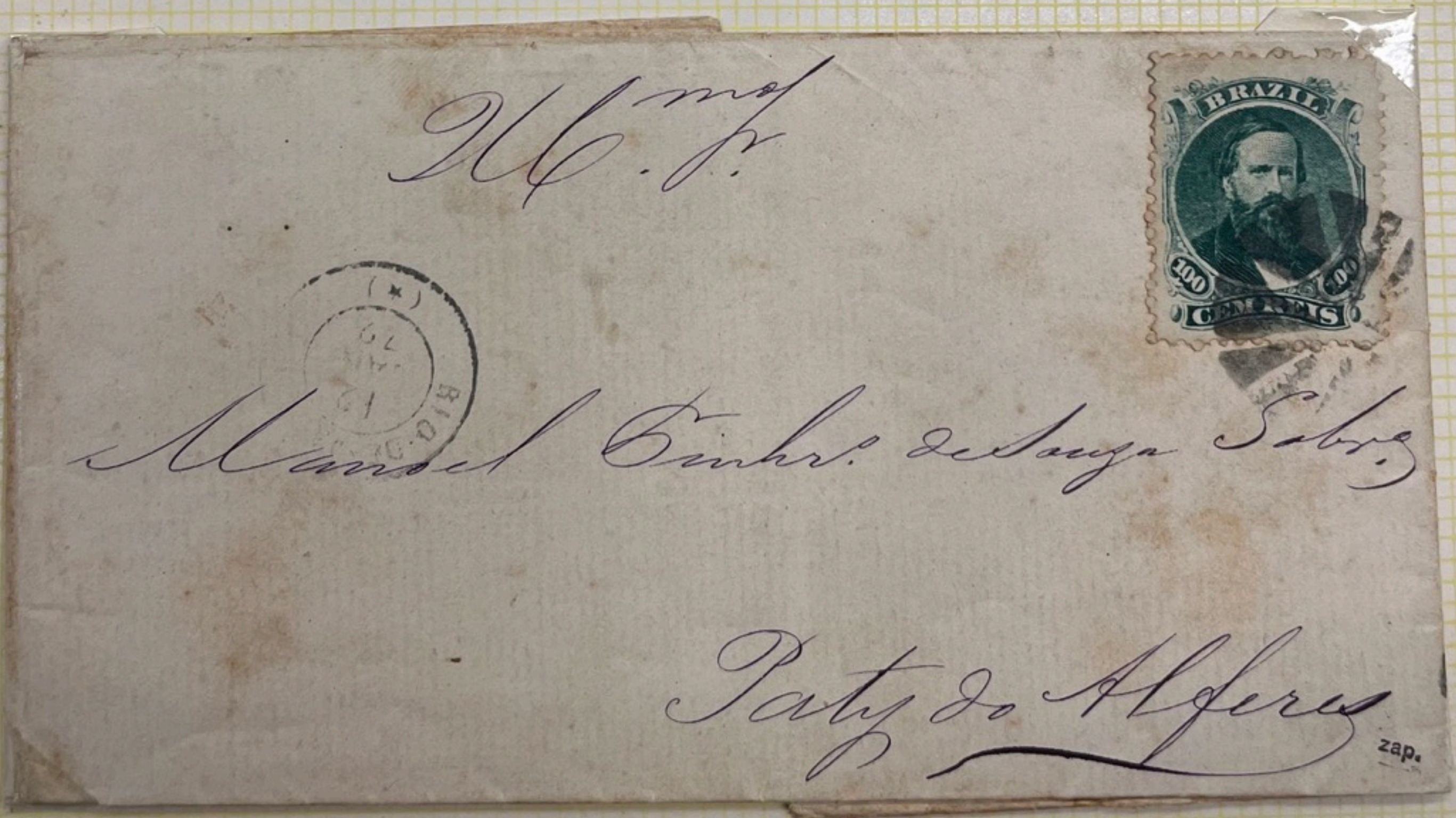
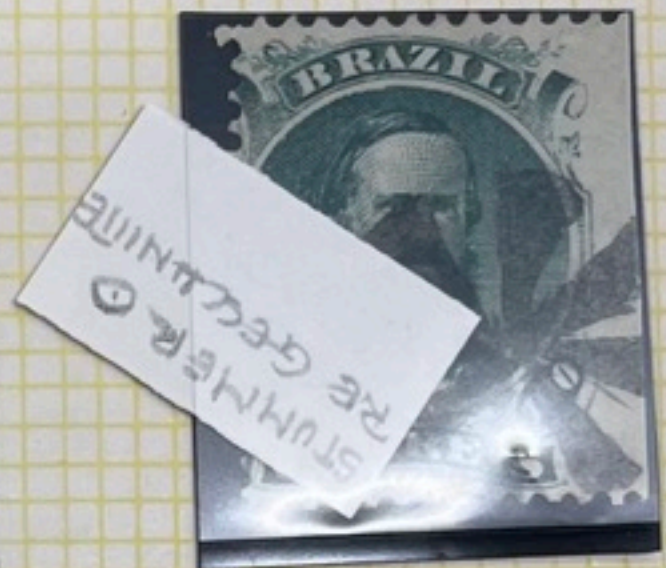
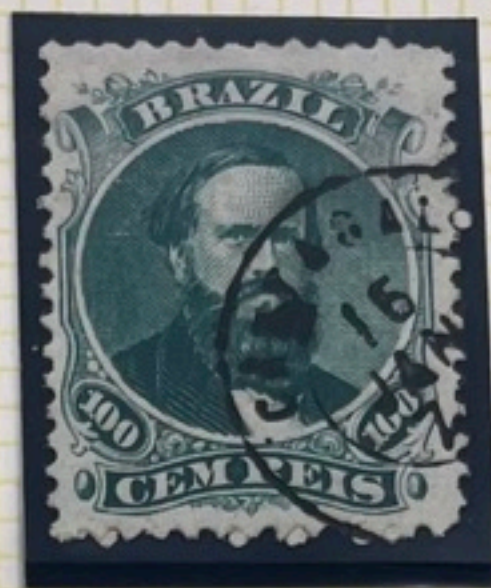
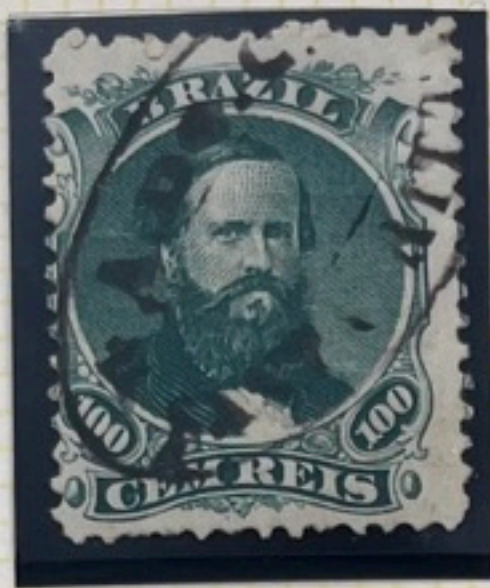
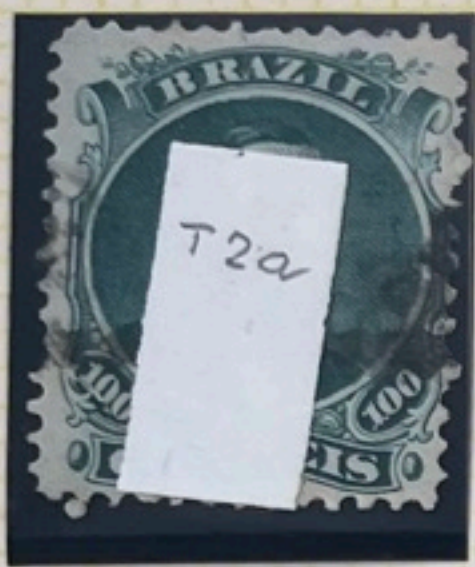
TRANSPARENT



STUMMER  
BLAU



PAAR  
PUNKT  
STUMMER



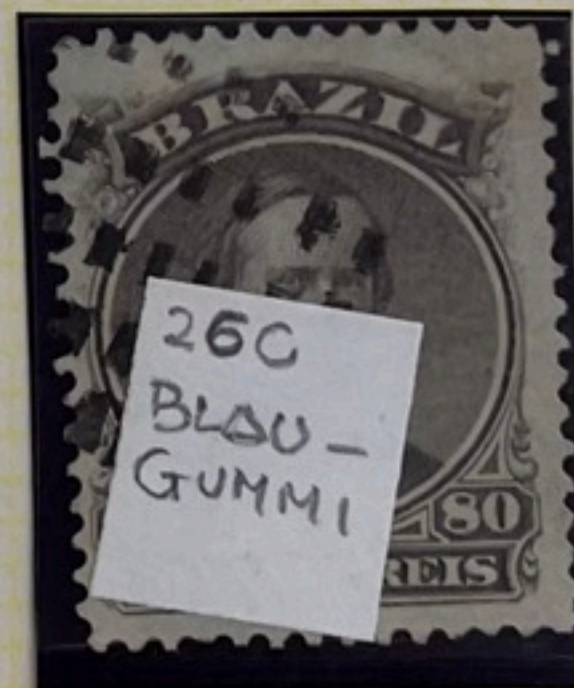
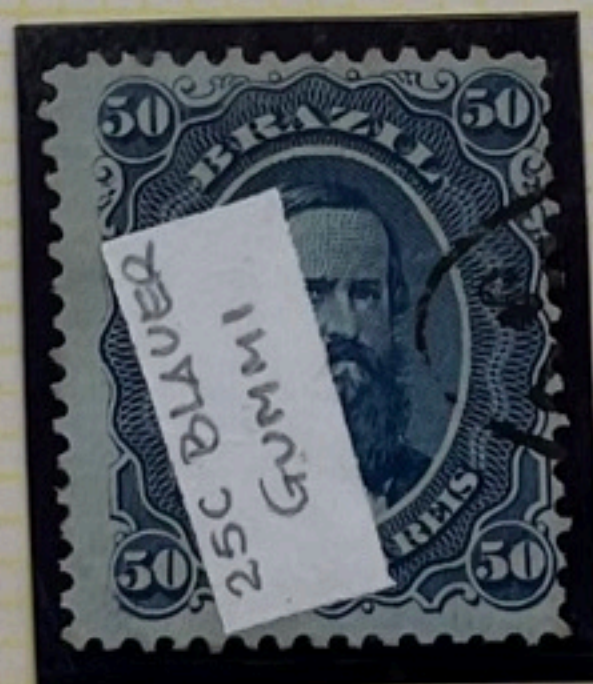
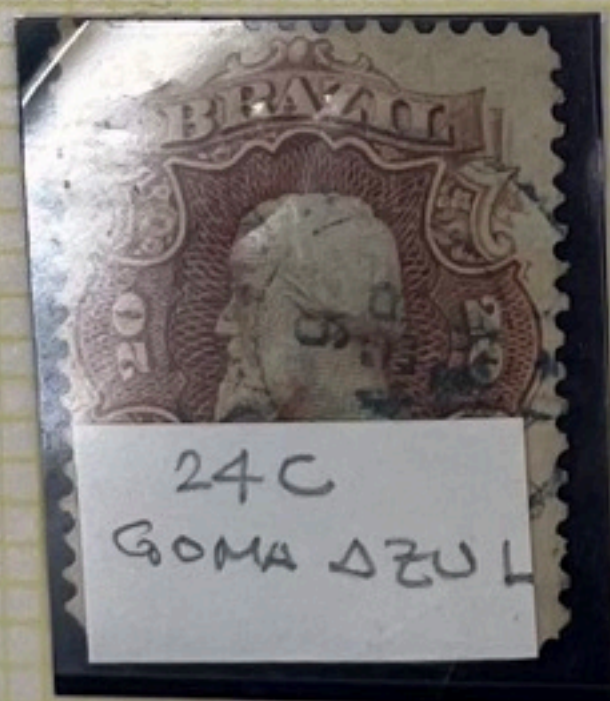
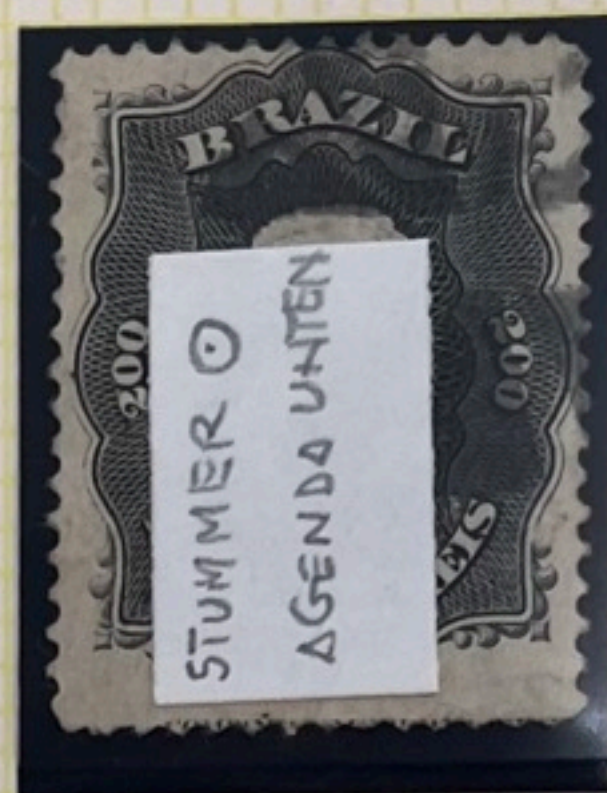
*M. Manoel*

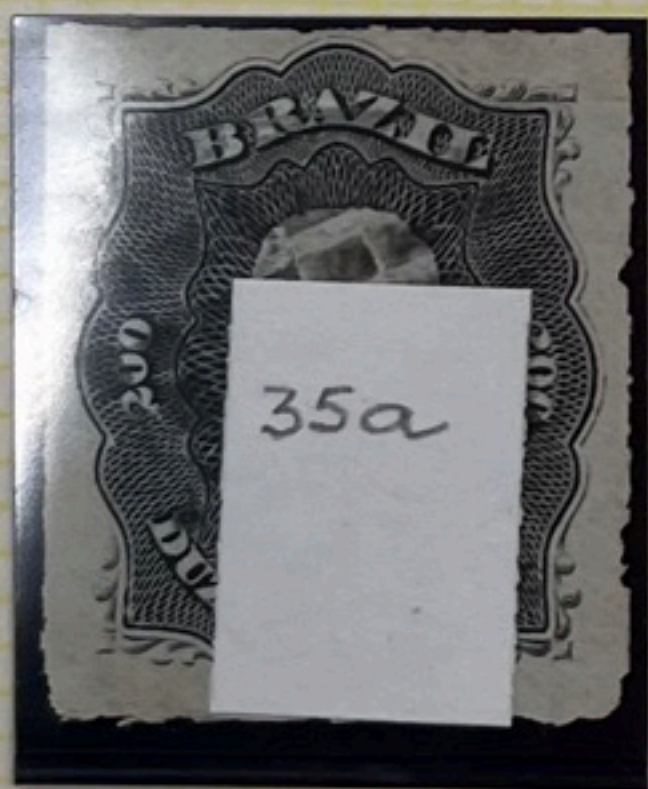
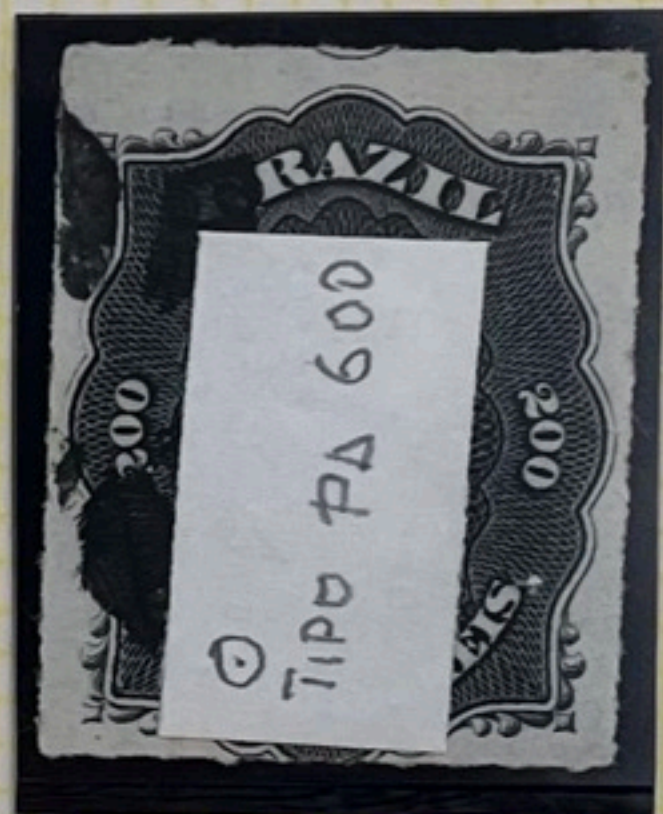
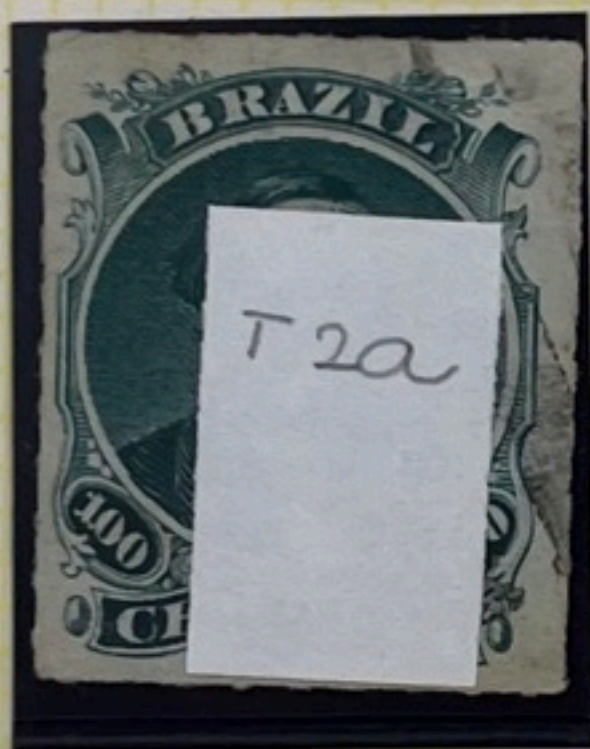
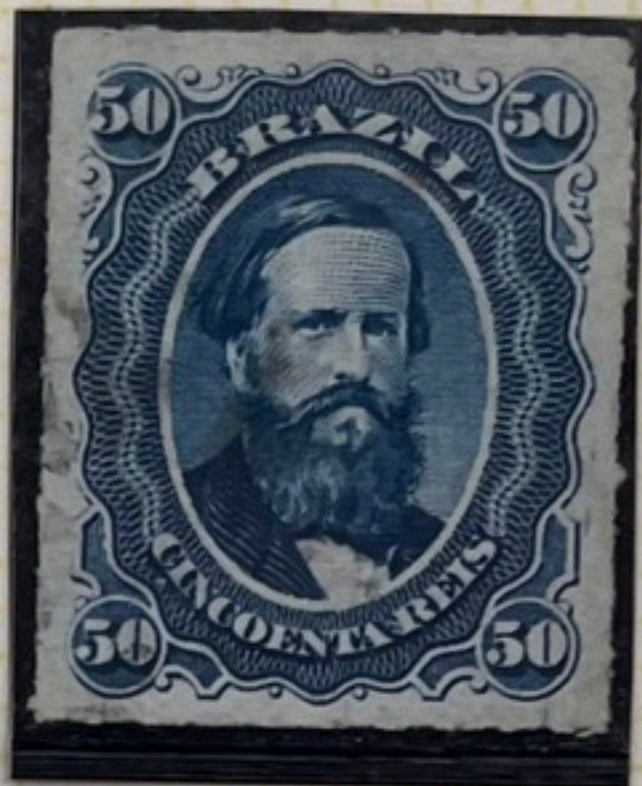
RIO DE JANEIRO  
19/10/62

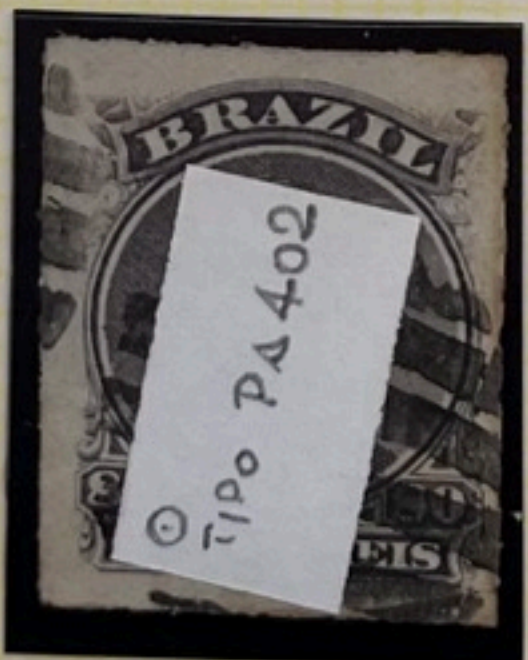
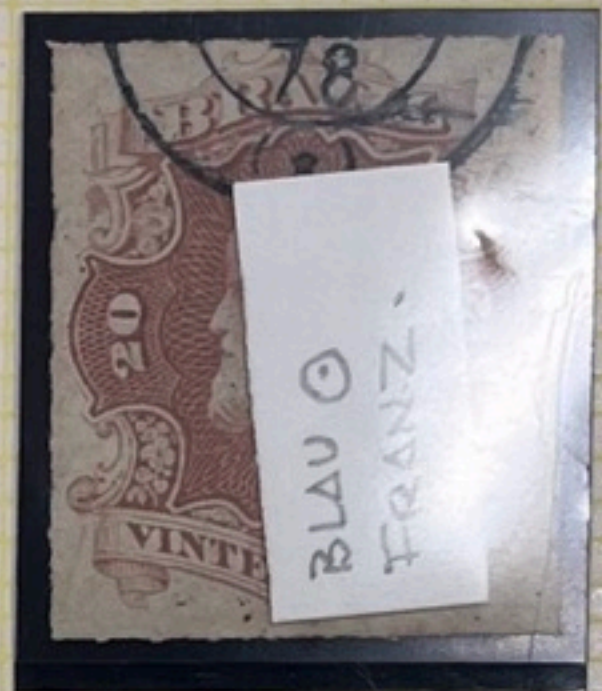
*M. Manoel Cunha de Souza Sobrinho*

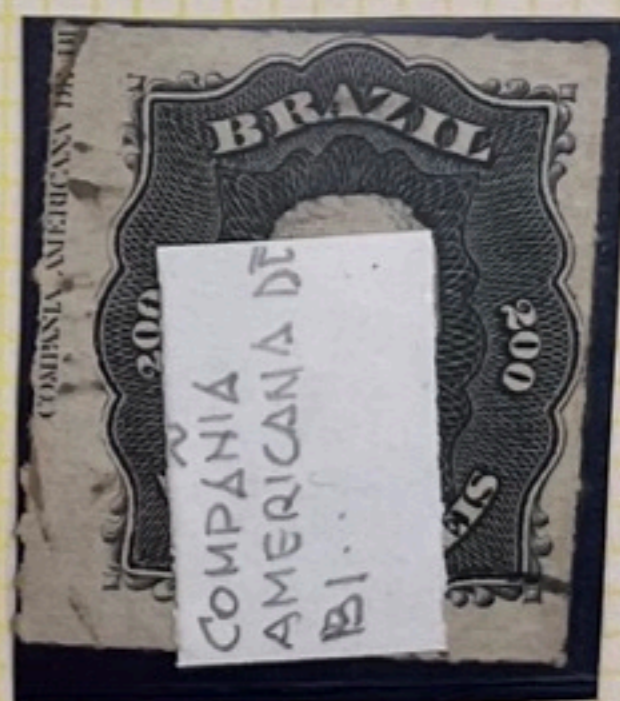
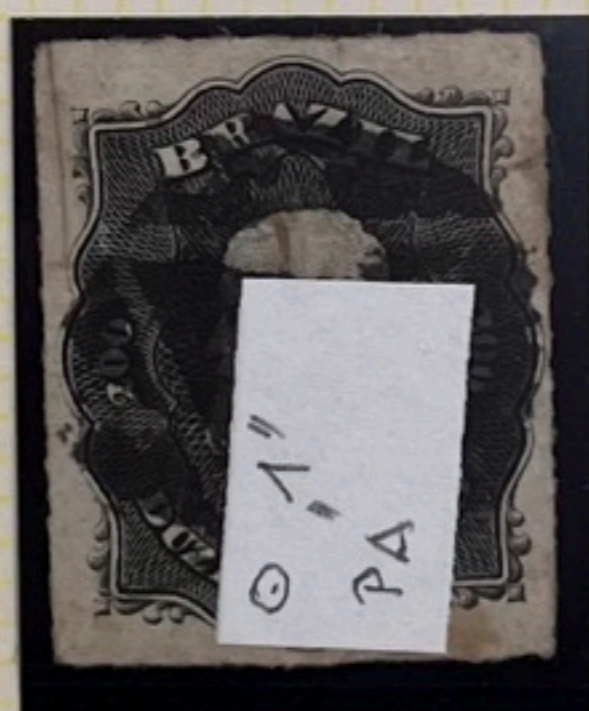
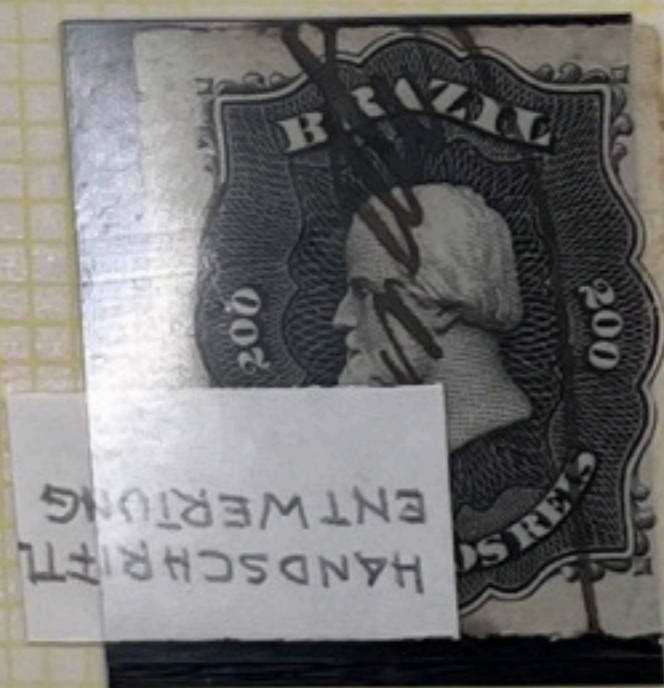
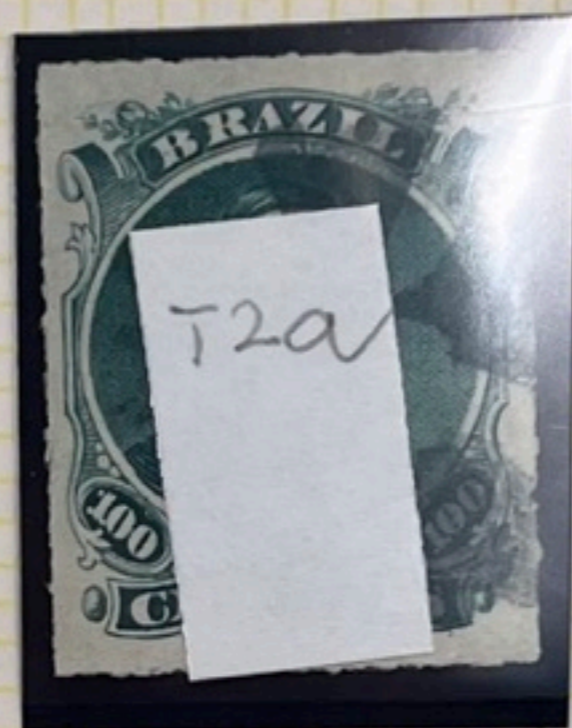
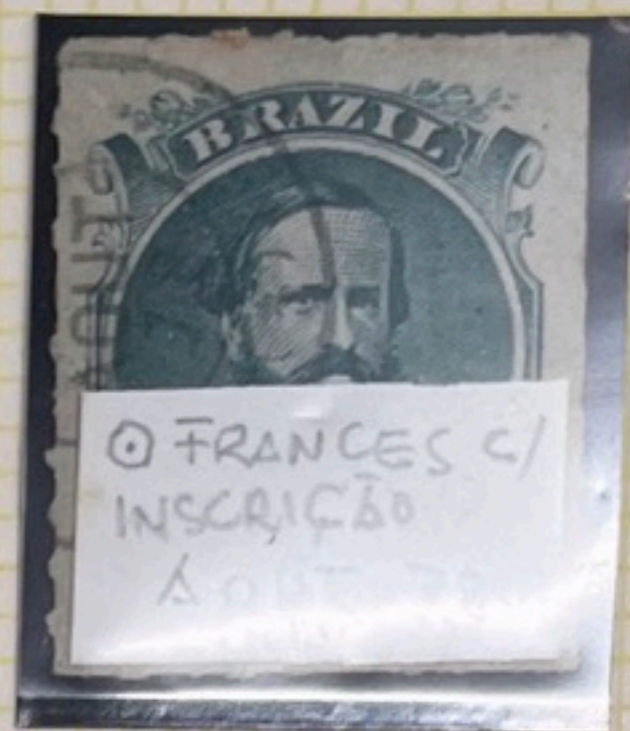
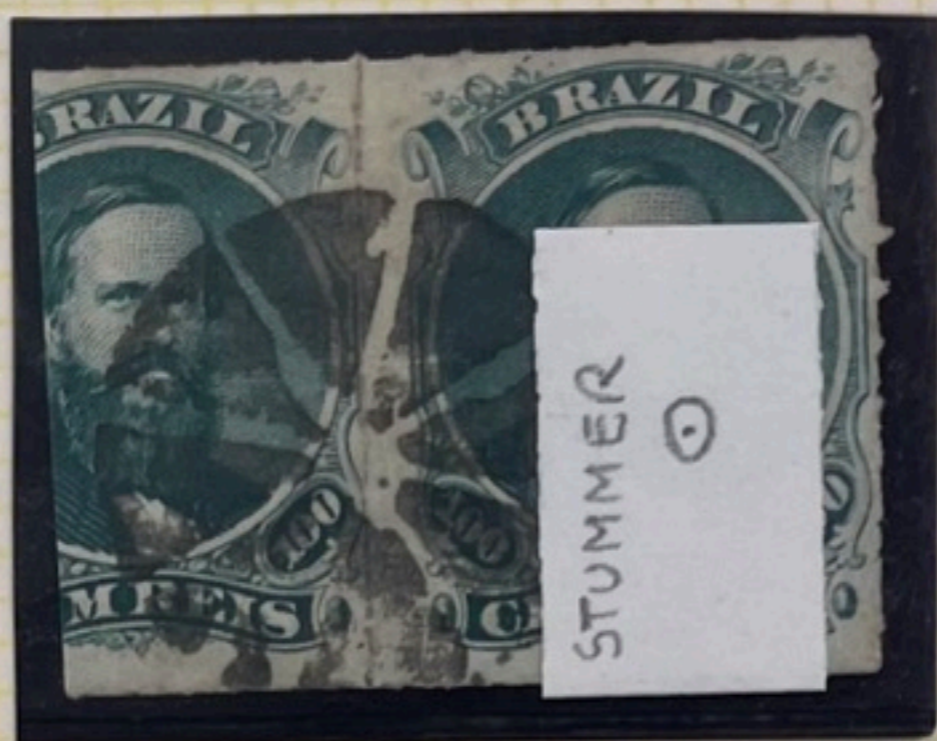
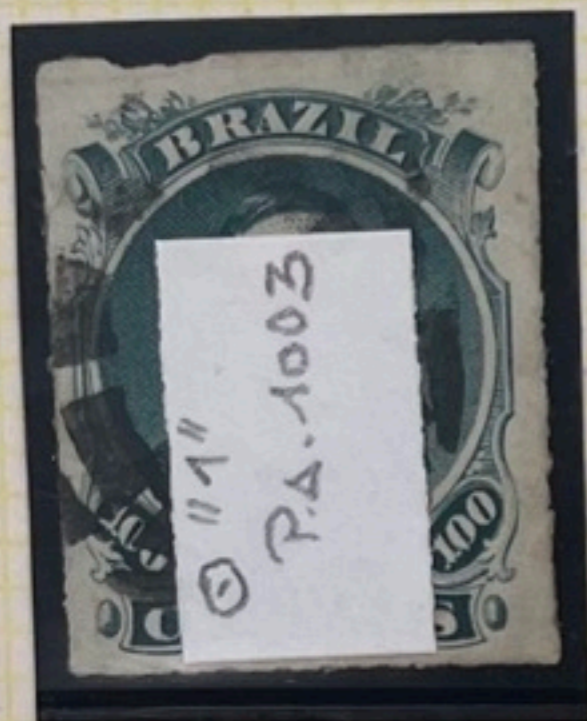
*Paty do Alferes*

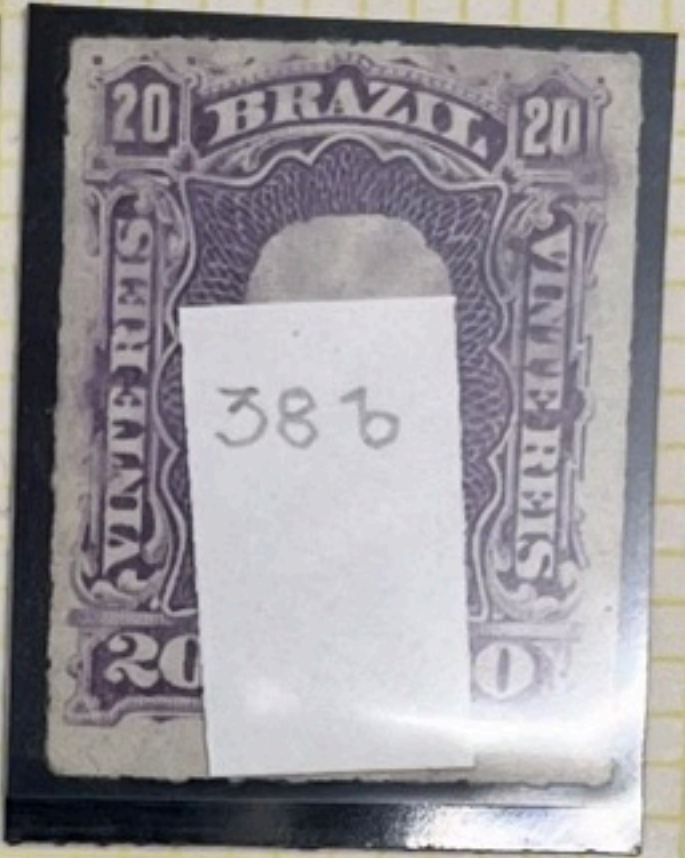
zap.

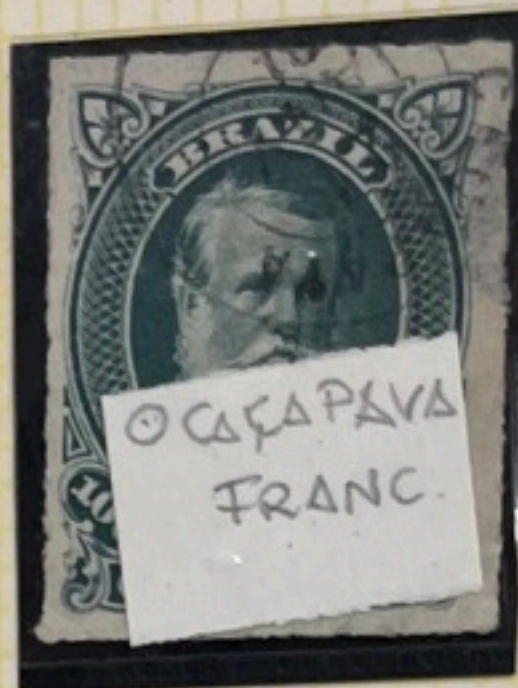
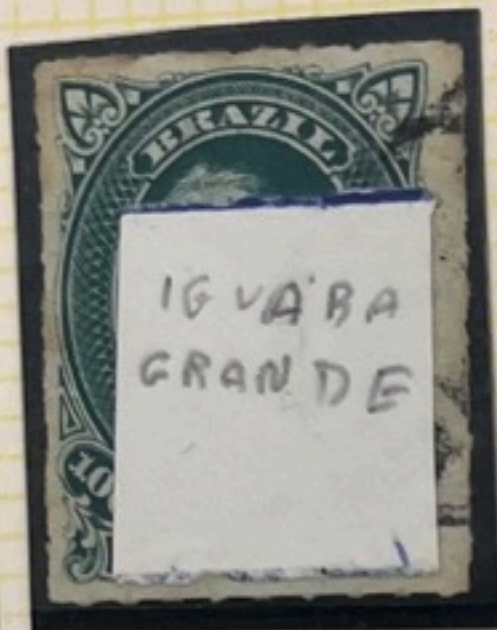
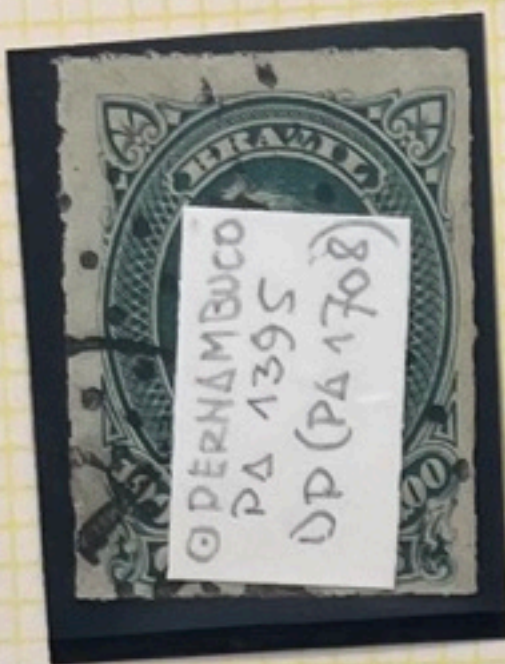










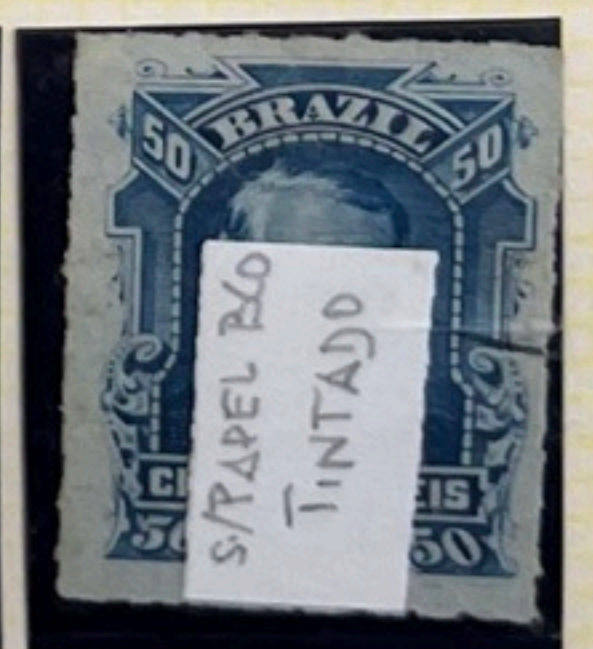
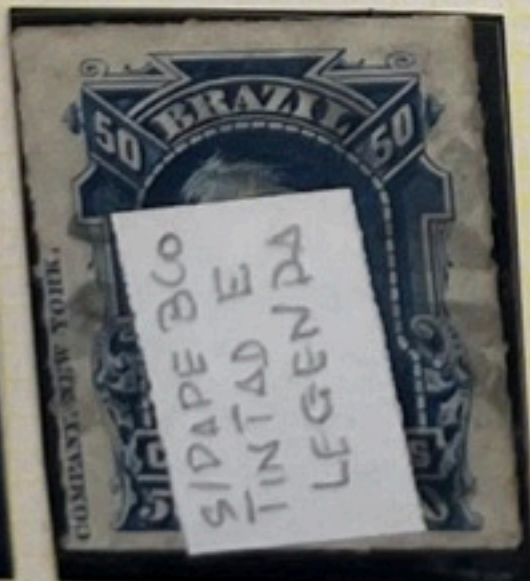
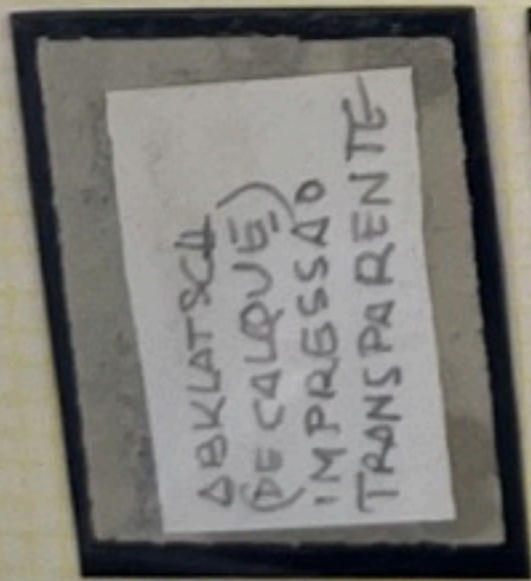
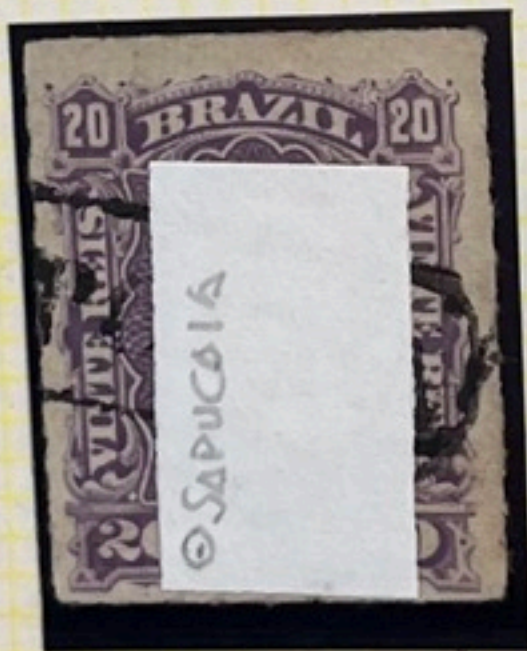
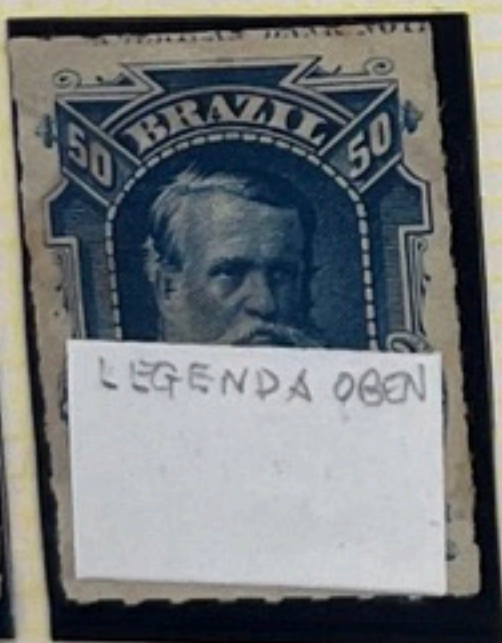
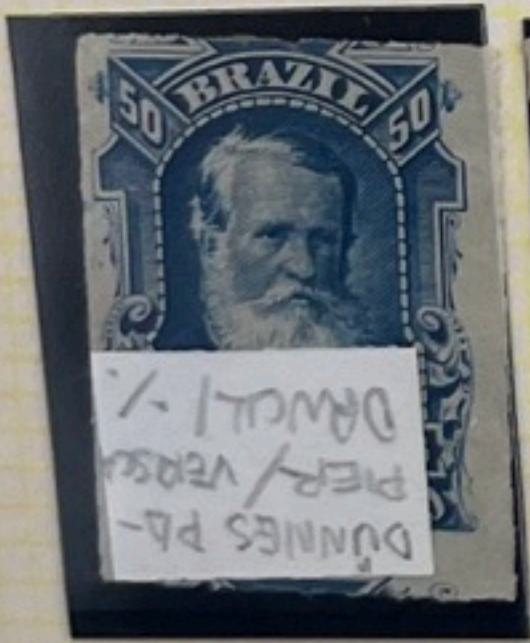
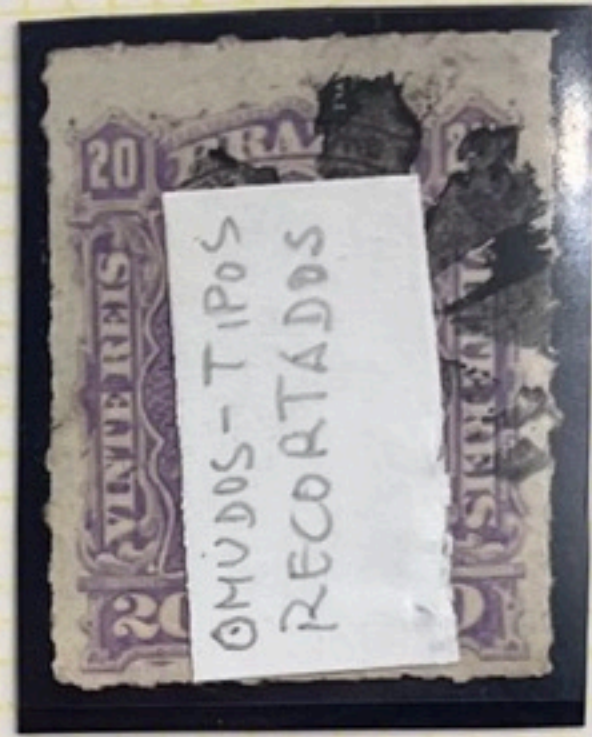


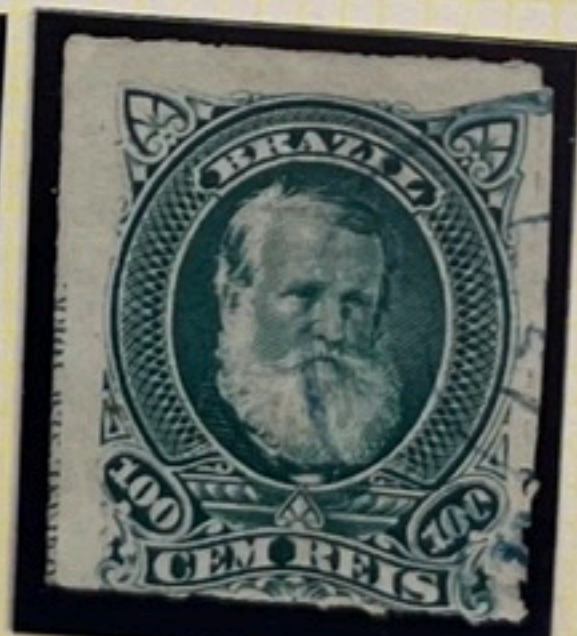
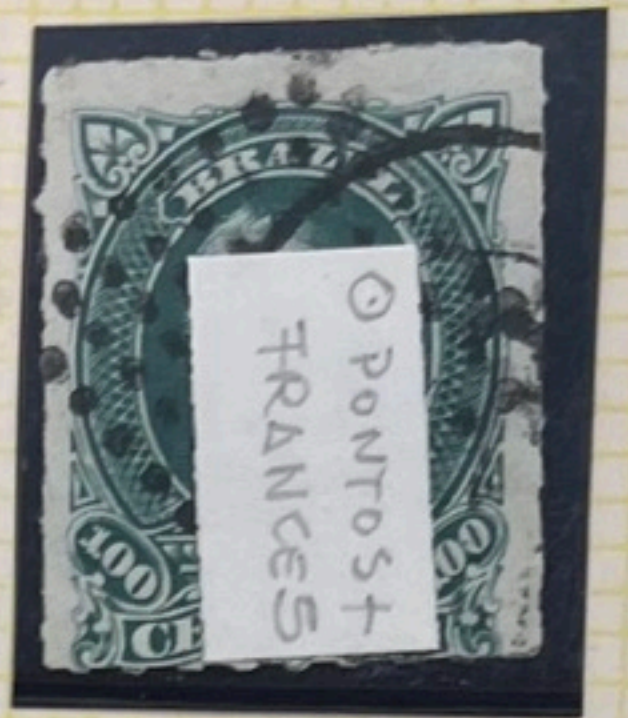
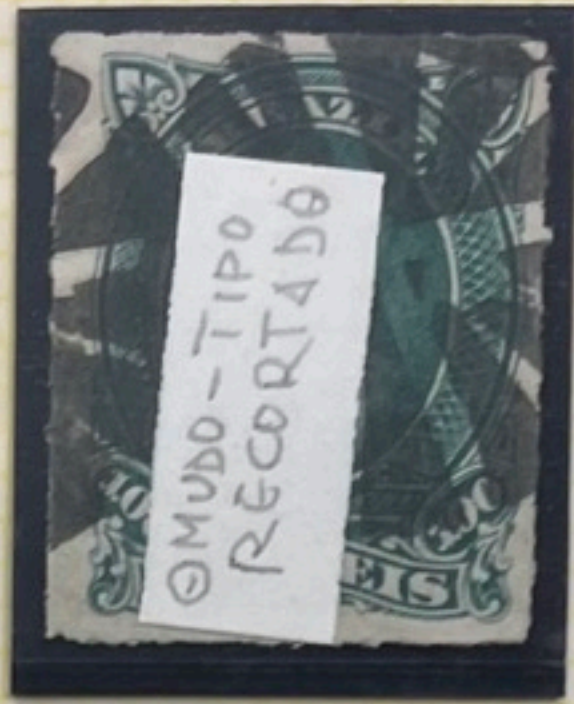
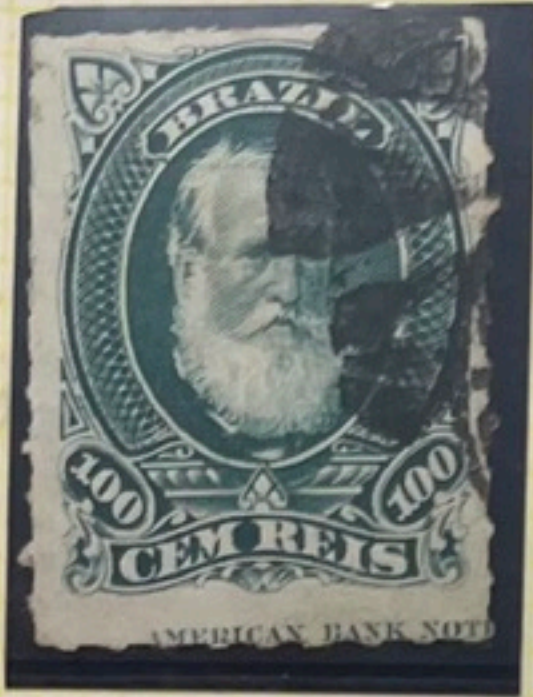
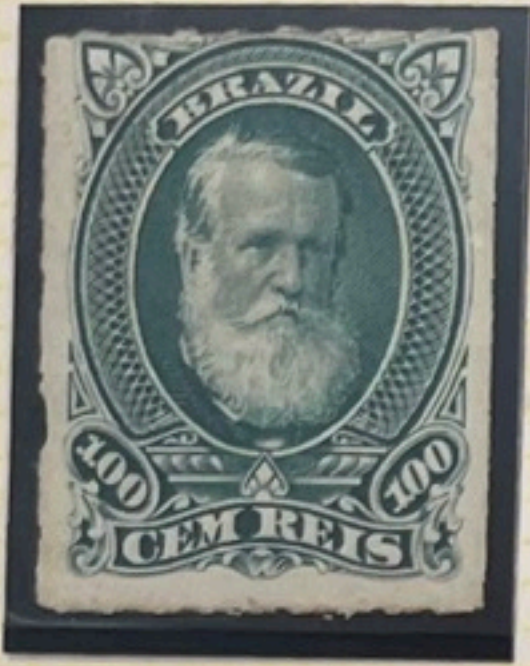
*M. S. S. S.*

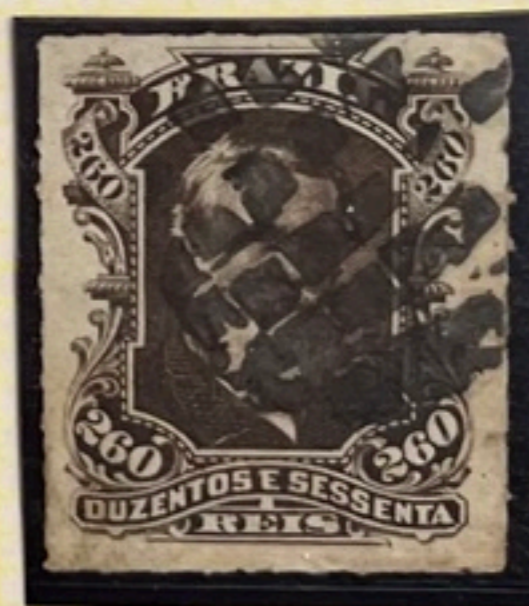
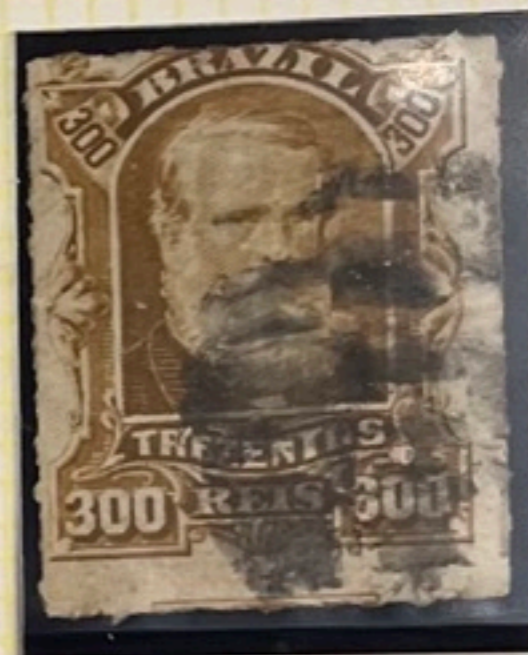
*Senhores de Raphael Augusto Teixeira de  
Almeida*

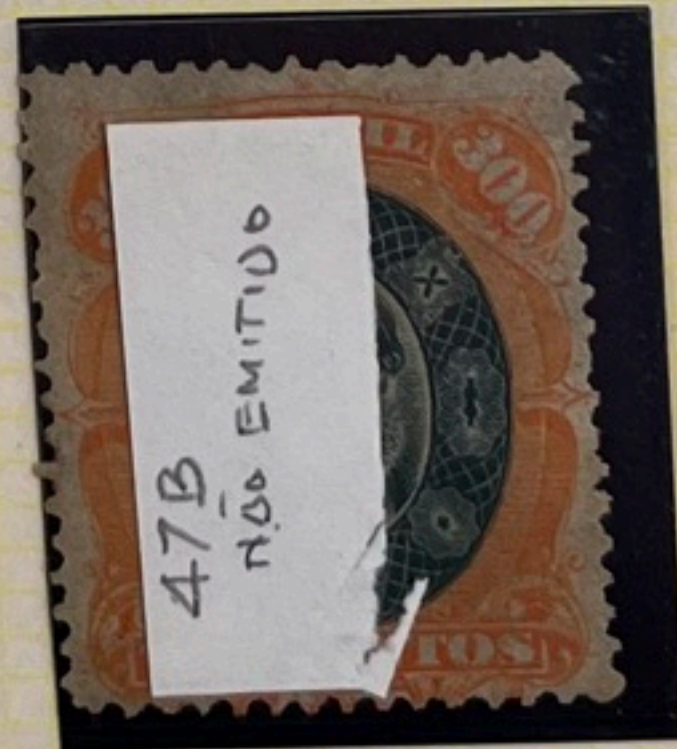
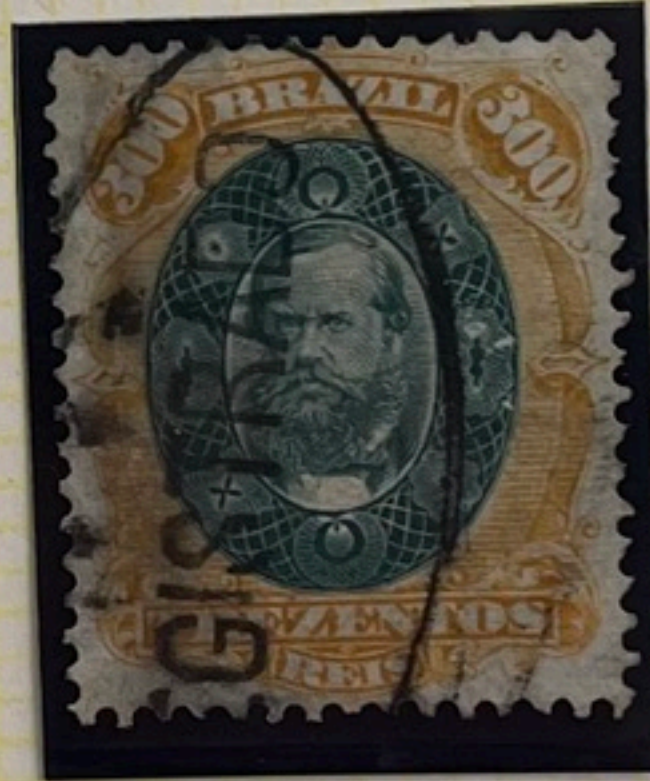
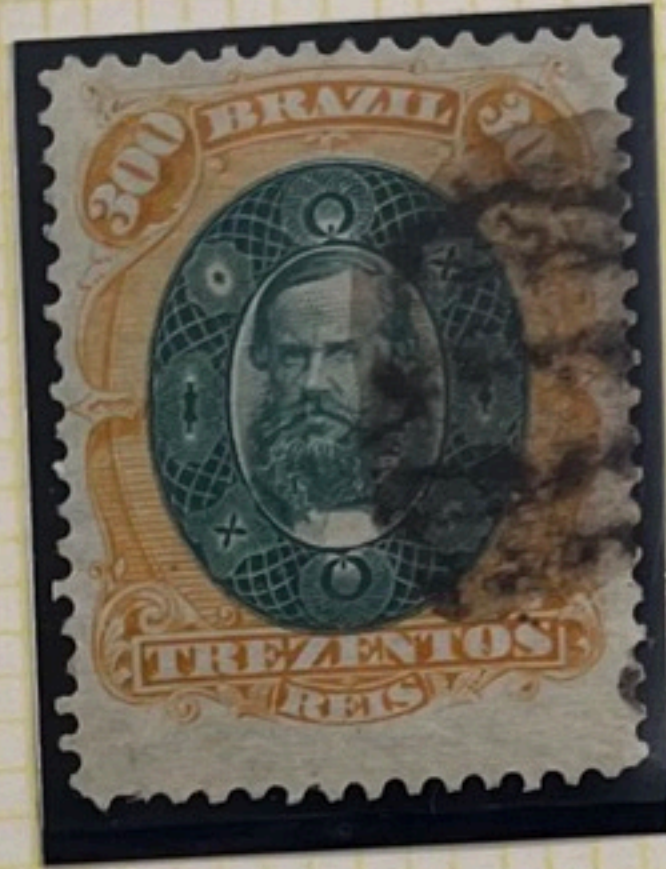


*Barra do Pirajó*













23-29 ◦ BRASILIEN

1866, 10-500R, Serie von 8 Werten (Mi 100.-)



1876/77, Lot von 14 Werten, alles farbige Stempel.



28 Δ

BRASIL IEN

1866, 200R schwarz, halbiert auf Δ als 100



1866/78, 7 versch. Don-Pedro-Werte, alle mit DP Stpl.



1866 FRANKOSERIE KAISER PEDRO II.

GEZAEHNT 12

STUMME ENIWERUNGSTEMPEL



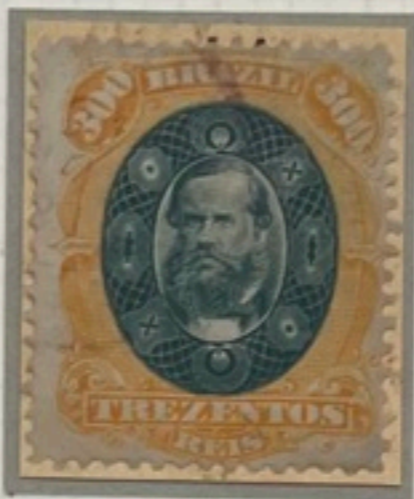
1876 FRANKO-SERIE KAISER PEDRO II.

DURCHSTOCHENE AUSGABE



1875 BRIEF VON S.PASIO NACH AMPARO

100 REIS GEZAEHNT



300 REIS DER HOECHSTE WERT DER DON PEDRO-AUSGABE ERSCHEINT AM 21.8.1878  
WIEDER MIT ZAEHNUNG 12 AUFLAGE : 996400

1878\_1879

FORTSETZUNG DER DURCHSTOCHENEN AUSGABE KAISER PEDRO II MIT WEISSEM BART



1876 BRIEF VON RIO DE JANEIRO NACH AMPARO

AUSGABE 1876



