



EUROPA



SCHAUBEK-ALBUM

BAYERN / BAVARIA / BAVIERE
 Königreich / Kingdom / Royaume / Freistaat / Republic / République
 München / 1 Gulden = 60 Kreuzer / 1 Mark = 100 Pfg.

1849/62 —

1876/1911 ~

1867/75 ~



2
Pfennig
grau
grey | gris



3
Kreuzer
rosa | rose



25
Pfennig
orange

30
Pfennig
olivgrün
olive green
vert-olive

40
Pfennig
olivgelb
olive yellow
jaune-olive

2
Mark
orange



1911 ~

20 Pf.
(Pfennig)
blau : bläulich
blue : bluish
bleu : bleuâtre

25 Pf.
(Pfennig)
schwarzbraun :
sämisch
black brown :
buff
brun-noir :
chamois

40 Pf.
(Pfennig)
oliv : sämisch
olive : buff
olive : chamois



10
(Pfennig)
rot/gelb/schwarz
red/yellow/black
rouge/jaune/noir

1914/20 ~

2 Pf.
(Pfennig)
blaugrau
blue grey
bleu-gris



auch mit | also
with | aussi avec
**Volksstaat
Bayern**
5 Pf.
(Pfennig)
grün
green | vert

oder | or | ou
**Freistaat
Bayern**
7 1/2 Pf.
(Pfennig)
dunkelgrün
dark green
vert foncé

10 Pf.
(Pfennig)
zinnober
vermillon
vermillon

15 Pf.
(Pfennig)
rot
red | rouge



25 Pf.
(Pfennig)
grauschwarz
grey black
noir-gris

30 Pf.
(Pfennig)
orange

40 Pf.
(Pfennig)
oliv | olive

50 Pf.
(Pfennig)
rotbraun
red brown
brun-rouge

60 Pf.
(Pfennig)
dunkelgrün
dark green
vert foncé

75 Pf.
(Pfennig)
rotbraun
red brown
brun-rouge

80 Pf.
(Pfennig)
dunkelviolet
dark violet
violet foncé



2 M.
(Mark)
dunkelviolet
dark violet
violet foncé

3 M.
(Mark)
rot
red | rouge

BELGIEN / BELGIUM / BELGIQUE / BELGIE

Königreich / Kingdom / Royaume / Brüssel / 1 Franc = 100 Centimes

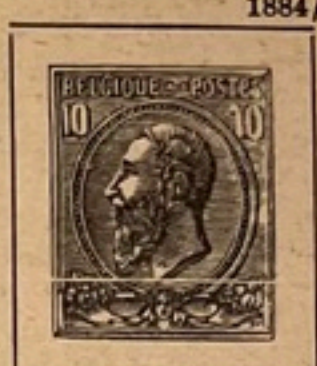
1883 ~



1809/81 ~



1884/91 ~



1893/94 ~



1905 ~



1907/08 ~



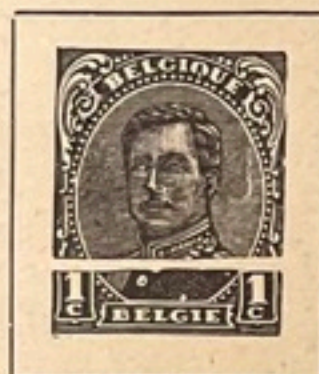
1912/14 ~



20
(Centimes)
olivgrau
olive grey
gris-olive



1915/20 ~



2
(Centimes)
dunkelbraun
dark brown
brun foncé

3
(Centimes)
grauschwarz
grey black
noir-gris

1 C.
(Centime)
orange

2 C.
(Centimes)
olivbraun
olive brown
brun-olive

3 C.
(Centimes)
braunrot
brown red
rouge-brun



1922/27 ~

1920 ~



2 C.
(Centimes)
oliv | olive

1930 ~



1930 ~



1921/24 ~



75 C.
(Centimes)
rot
red | rouge

1929 ~

T. 50 C.

1 c
(Centime)
rotorange
red orange
orange-rouge

3 c
(Centimes)
rotbraun
red brown
brun-rouge



1.25 Fr.
(Franc)
grün-schwarz
green black
noir-gris



1930 ~



1932 ~



1934/35 ~

1
F(ranc)
karmin
carmine
carmin



1932 ~

T. 2 C.

10
(Centimes)
dunkeloliv
dark olive
olive foncé

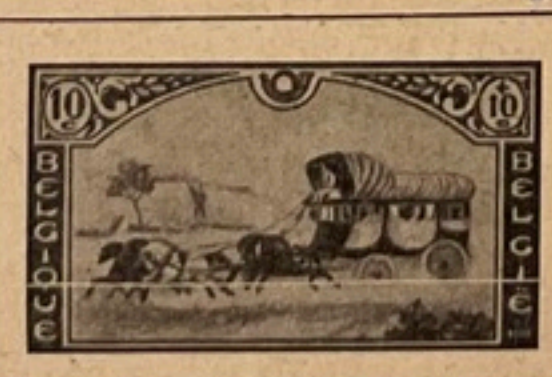
T. 5 C.

20
(Centimes)
violett | violet

1936 ~



10
C(entimes)
oliv | olive



1935 ~



20
C(entimes)
violett | violet

1936 ~

25
C(entimes)
rosa | rose

BELGIEN / BELGIUM / BELGIQUE / BELGIE

1935 III ~



1936 II ~



25 + 5
C(entimes)
violett | violet

1937 I ~



1.75 Frs.
+ 25 C.
violettblau
violet blue
bleu-violet

1938 IV ~



30 + 5
C(entimes)
hellila
light lilac
lilas clair

1937 ~



25 + 5
C(entimes)
dunkeloliv
dark olive
olive foncé

1938 II ~



1938 ~
T. 1936
40
C(entimes)
lila
lilac | lilas

1937 II ~

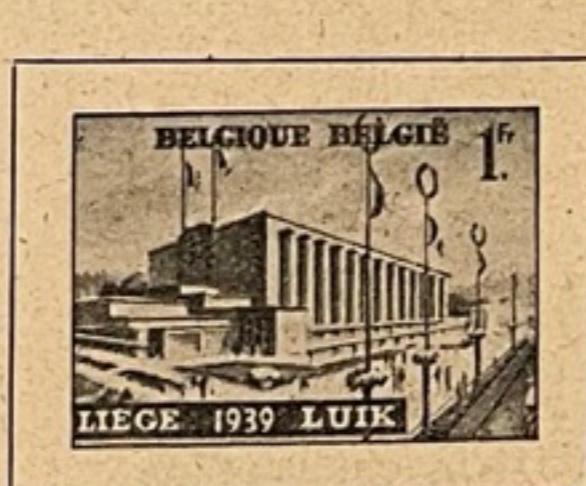


25 + 5
C(entimes)
braun
brown | brun

1938 III ~



1938 ~



1936/43 ~



1.50
FR(anc)
rotlila
red lilac
lilas-rouge



2
F(rancs)
dunkellila
dark lilac
lilas foncé

T. 1 F.
2
F(rancs)
violett
violet

T. 1.75 F.
2.25
F(rancs)
schwarzviolett
black violet
violet-noir

BULGARIEN / BULGARIA / BULGARIE / БЪЛГАРИЯ

Fürstentum / Principality / Principauté / Königreich / Kingdom / Royaume / Sofia / 1 Lew = 100 Stotinki

1882/87 ~



1895 ~ (X)



1901 ~



1889/90 ~



1911 ~



1919 ~



1918 ~



1918/19 ~



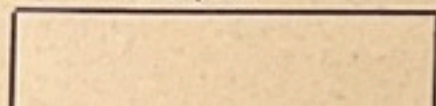
1919 ~



1918/19 ~



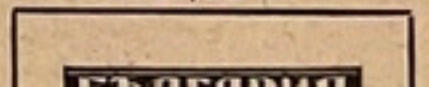
1921/22 ~



1924 ~



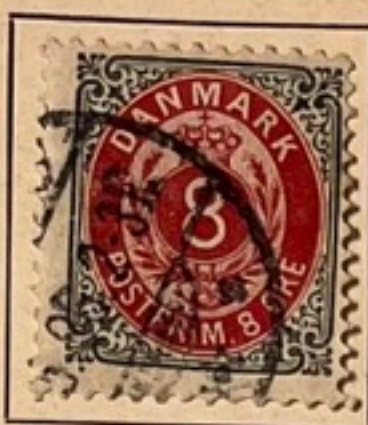
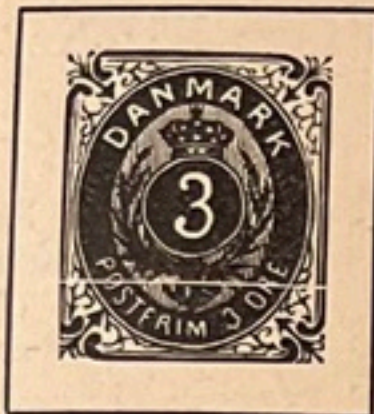
1921/22 ~



DANEMARK / DENMARK / DANEMARK / DANMARK

Königreich / Kingdom / Royaume / Kopenhagen / 1 Krone = 100 Øre

1875/79 ~



1867 —



1882/1902 ~

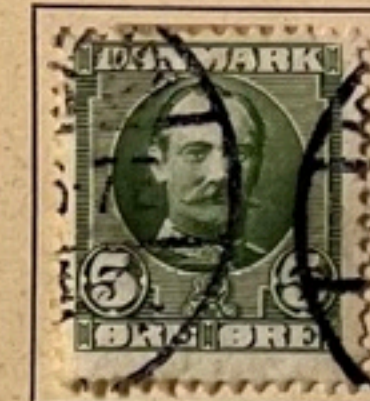
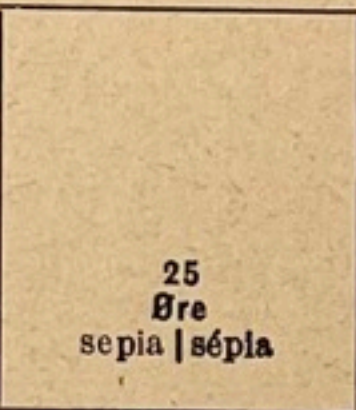


1
Øre
orange

1904/12 ~

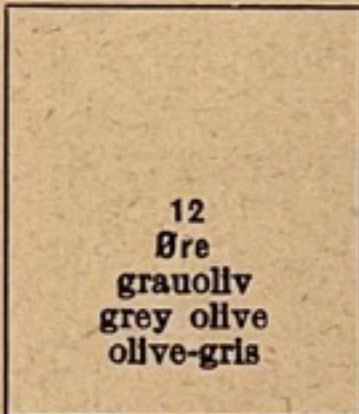
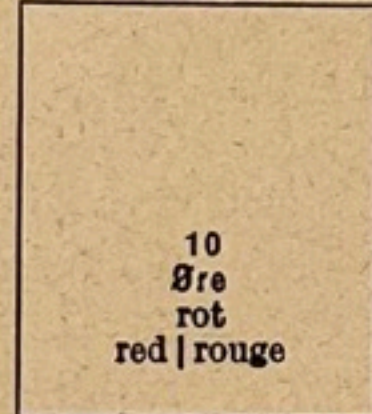
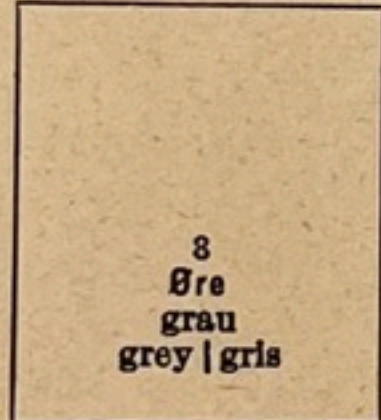
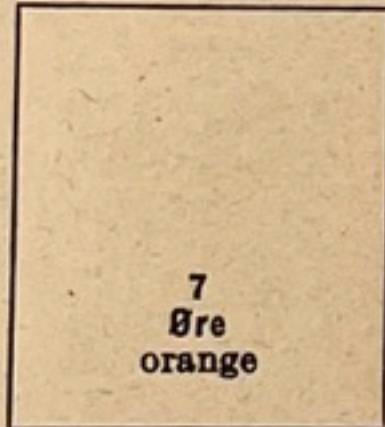


1904/05 ~

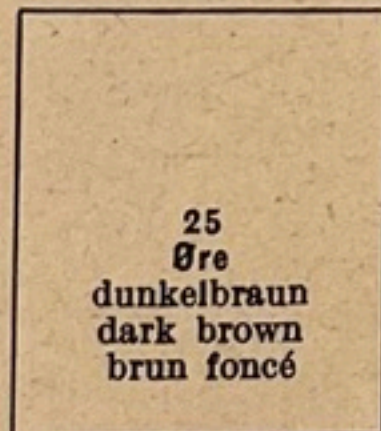


1907/12 ~

1913/20 ~



1924 ~



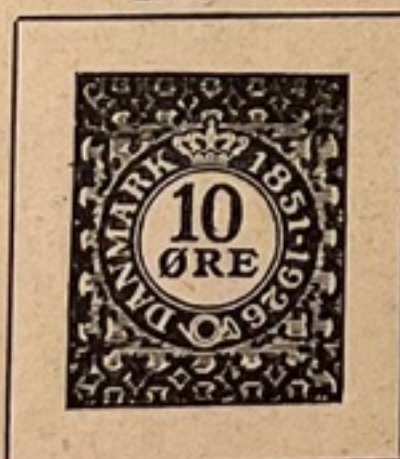
1924 ~



1929 ~

1929 ~

1926 ~



1920 ~

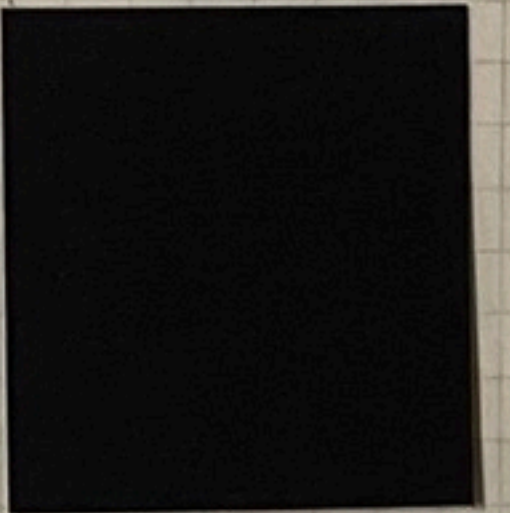
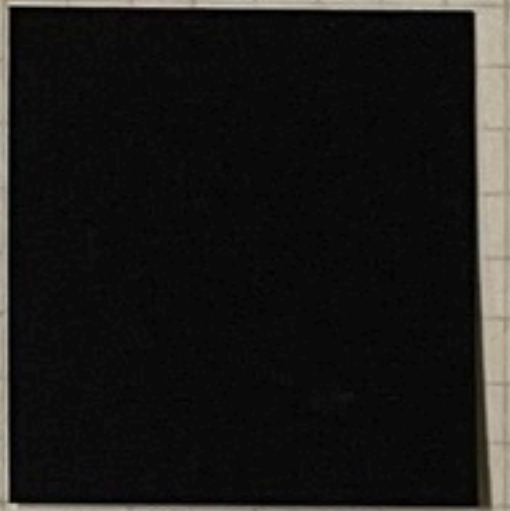


1926 ~

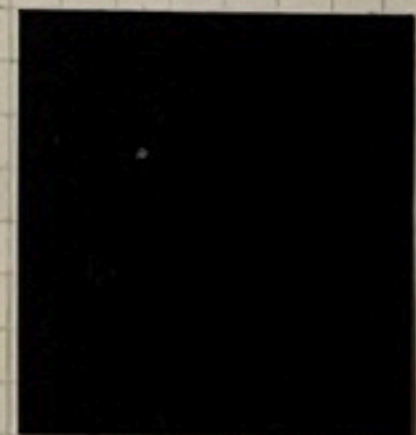
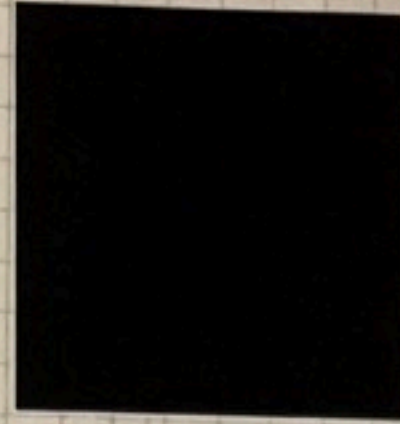


1930 ~

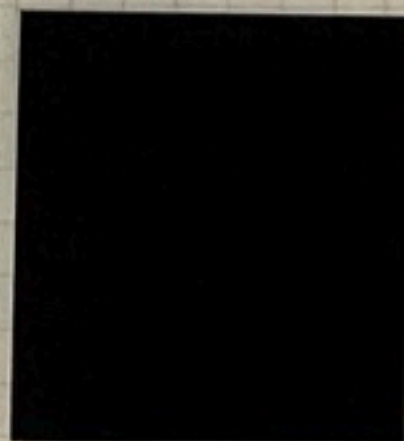


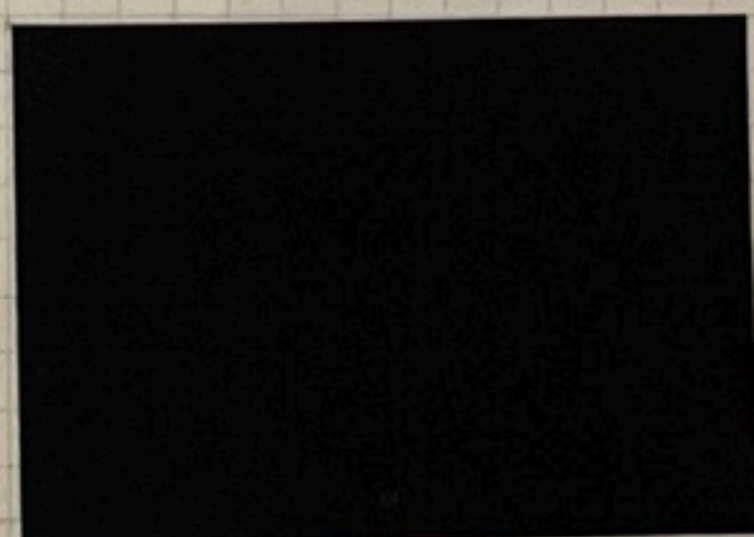




















rün—vert.

carmin.

blau—bleu.

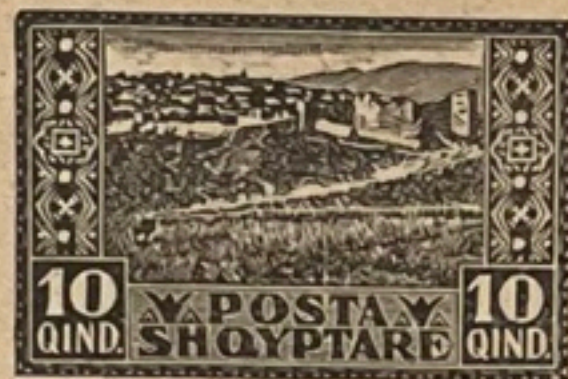
h'lil.

orange.

orange.

2 q.

5 q.



orange.

h'grün—vert clair.

carmin.

d'grün—vert foncé.

viol.

2 fr.

oliv.



Portomarken.

Timbres taxe.

1922. ○

TAK 05

rot & grau
rouge & gris.

schwarz & gelb
noir & jaune.

rot & grün
noir & vert.

rot & grün
rouge & vert.

schwarz & violett
noir & violet.

blau & braun
bleu & brun.

1882/85.



lila & sämisch
lilas & cham.



grün & sämisch
vert & cham.



orange & gelb
orange & jaune.



grün & grünlich
vert & verdâtre.



rosa & fleischfarb.
rose & chair.



violett & lila
violet & lilas.



blau & blaßblau
bleu & bleu pâle.



violett & hellgrün
violet & vert clair.



blau & fleischfarb.
bleu & chair.

1884/85. ○



rosa & fleischfarb.
rose & chair.

5 * 30 st.

blau & braun
bleu & brun.

15 * 25 st.

blau & blaßblau
bleu & bleu pâle.

50 st. * 1 fr.

schwarz & rot
noir & rouge.

1886/87. □



lila & sämisch
lilas & cham.

ДВЪ

2 st.

grün & sämisch
vert & cham.

1 lew.

schwarz & rot
noir & rouge.

1889/96. □



viol.



2 st.

grau—gris.



br'n.



grün—vert.



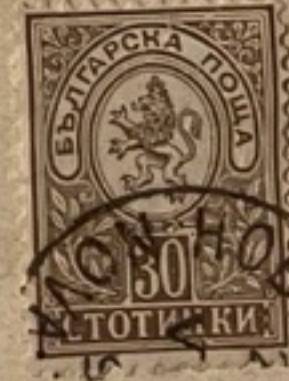
rot—rouge.



gelb—jaune.



blau—bleu.



br'n.



grün—vert.

(Emiss. 1889/96.)

(1896)

1 lew.

rot—rouge.

(1896)

2 l.

rosa & lachsfarben
rose & saumon.

3 l.

schwarz & sämisch
noir & cham.

1892/1901. ○

01

* 2 st.

grün & sämisch
vert & cham.

5

* 3 st.

br'n.

10

* 50 st.

grün—vert.

15

* 80 st.

br'n.

1896. □



1901. □



carmin.

15 st.

grün—vert

BULGARIEN.

BULGARIE.



1 st.

violett & olivgrün
violet & olive.



3 st.

orange & blauschw.
orange & noir.



rot & schwarzbraun
rouge & brun-noir.



lilarot & grünschw.
rose & gris-noir.



hellblau & blauschw.
outremer & noir.



gelbbraun & grünschw.
bistre & gris.

(Emiss. 1901.)



1 lew.

dunkelblau & braun
bleu & brun.

ziegelrot & grünschw.
rouge & vert.



rot—rouge.

10 st.

grün—vert.

15 st.

blau—bleu.

(Emiss. 1901.)

2 lew.

rot & blauschwarz
rouge & bleu-noir.

3 l.

grau & schokoladen
gris & chocolat.



10 st.

grün—vert.

25 st.

rotbraun—brun-rouge.

blau—bleu.

1903/09. (Fm. 1889/90.)

1909

(1 stot.)

viol.

do. (Fm. 1901.)

1909

(5 st.)

grün—vert.

1909

5

(5 * 30 st.)

br'n.

1909

10

(10 * 15 st.)

orange.

1909

10

(10 * 30 st.)

grün—vert.

1910.

5

(5 * 15 st.)

lilarot & grünschw.
rose & gris-noir.



25

(25 * 30 st.)

lilarot & grünschw.
rose & gris-noir.

gelbbraun & grünschw.
bistre & gris.

1910

1

(1 * 3 st.)

orange & blauschw.
orange & noir.

1910

5

(5 * 15 st.)

lilarot & grünschw.
magenta & vert-noir.

1911. * Mitte schwarz [Centre noir].



br'n-carm.*



grün—vert.*

2 st.

rot—rouge.*

10 st.

rot—rouge.*

25 st.

ultramar.—outremer.*



grün—vert.*



gelbbraun—bistre.



blau—bleu.*



br'n-orange.*

1 lew.

br'n.

2 l.

viol.*

3 l.

viol.*



10 st.

25 st.

oliv.

rotbraun—rouge-brun.

blau—bleu.

1913. (Fm. 1911.) O „ОСВОБ. ВОЙНА“ [1912—1913].



br'n-carmin.



grün—vert.



rot—rouge.



rot—rouge.



ultramar.—outrem.



grün—vert.



gelbbraun—bistre.

1915/17. (Type 1911.)



schiefergrün—gris-vert.



grün & lilabraun
vert & lilas-brun.

15 st.

oliv.

30 st.

oliv & rotbraun
olive & rouge-brun.

10 st.

braunrot & d'braun
rouge-brun & brun.

25 st.

schw'blau & schwarz
noir-bleu & noir.

1915. (Fm. 1911: 25 st.) O

10 st.

* 25 st.

ultramarin & schwarz
outremer & noir.

1916. (1889/96.) O

grün—vert.

8

стот.

* 1 st.

viol.

1918. ■■■■■



grün—vert.

1918. ■■■■■



oliv.



d'br'n.



d'blau—bleu foncé.



rot—rouge.

1917/18. ■■■■■



grün—vert.



graugrün—gris-vert.



blau—bleu.

30 st.

orange.

50 st.

viol.

1918. ■■■■■



grün—gris.

1920. ■■■■■



schwarz—noir.



oliv.



br'n-orange.

3 l.

lilarot—lilas-rouge.

1918. ■■■■■



olivgrün—gris-vert.

1920. 24. Oct. Iwan Vasoff.

h'blau—bleu clair.

viol.-br'n.

ocker—ocre.



carmin.



graubraun—gris-brun.



viol.



br'n.



1921.



weinrot—lie de vin.



weinrot—lie de vin.



weinrot—lie de vin.



blau—bleu.



ro.-viol.

1921.



graublau—gris-bleu.



grün—vert.



orange.



br'n-viol.



blau—bleu.



carmin.



d'blau—bleu foncé.



br'n.



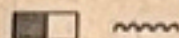
viol.



blau—bleu.



viol.



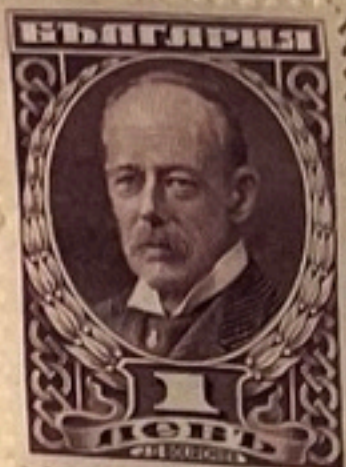
rot—rouge.



orange.



blauschiefer—ardoise.



viol.



gelbgrün—vert-jaune.



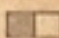
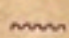
d'grün—vert foncé.



grünblau—bleu-vert.



br'n-viol.


1921/22.  



blau—bleu.



blau—bleu.


1924/25. (T. 1916/21.) 

10 st. • 20 st.

orange.

20 st. • 5 st.

grün—vert.

do. 

10 st. • 1 st.

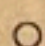
schwarz—noir.

20 st. • 10 st.

viol.

20 st. • 30 st.

rot—rouge.

(Fm. 1919/23.) 

1 l. • 5 st.

grün—vert.

3 l. • 50 st.

blau—bleu.

6 l. • 1 l.

carmin.

1925.  



rot & blau
rouge & bleu.
P. ros.



carmin & ro.



d'grün & gelblich
vert foncé & jaunâtre.



schwarz & ocker
noir & ocre.



braun & grün,
brun & verdât.




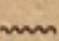
schwarz—noir.



oliv.



carmin & cham.

1926. (Christo Boteff)  



oliv.



gräuviolett—viol.-gris.



lil.-br'n.

1925. 



schwarz • grün—noir • vert.

2 l.

blaugrün—vert-bleu.

5 l.

blau—bleu.

1926. 



grün—vert.

1926. do.



br'n-viol.

do.




bräunlichgrau
gris-brunâtre.

1927. 



blau & oliv
bleu & gris-vert.

1926. 



d'br'n & ro.-br'n.

1927. 



orange.

2 l.

viol.

5 l.

rot—rouge.


1927. 



karmin & grau
carmin & gris.

30 st.

schwarzgrün & braun
vert-noir & brun.

1927/28. 



bräunlichgrau
gris-brunâtre.

1928. 



blau & d'braun
bleu & brun fcé.



schwarz & rot
noir & rouge.



blau & oliv
bleu & gris-vert.



karmin & h'gelb
carmin & jaune clair.



d'br'n & ro.-br'n.

1928. 

1851. —



br'n.



blau—bleu

1853. — Punktierter Grund [Fond pointillé].



blau—bleu.

4 sk.

br'n.

8 sk.

hellgrün—vert clair.

16 sk.

lil.

1857. do. Wellig lin. Grund [Fond ondulé].



br'n.

8 sk.

grün—vert.

1863. do.

4 sk.

rötlichbraun
brun-orange.

16 sk.

viol.

1864/68.



blau—bleu.

3 s.

lil.



rot—rouge.

8 s.

gelbbraun—bistre.

16 s.

grauoliv—olive.

1870.



grau & blau
gris & bleu.

3 sk.

grau & violett
gris & violet.

4 sk.

grau & rot
gris & rouge.

8 sk.

grau & braun
gris & brun.

16 sk.

grau & grün
gris & vert.

48 sk.

braun & lila
brun & lilas.

1875/79.



graublau & grau
gris-bleu & gris.



grau & blau
gris & bleu.

5 ö.

rosa & blau
rose & bleu.



grau & rosa
gris & rose.



grau & rotlila
gris & mauve.

16 ö.

grau & braun
gris & brun.



rot & grau
rouge & gris.



grau & grün
gris & vert.

(Emiss. 1875/79.)



braun & lila
brun & lilas.



grau & gelb
gris & jaune.

1882. Kleine Eckziffern¹⁾.



grün—vert.



blau—bleu.

1885/1902. do. Große Eckziffern²⁾.



orange.



grün—vert.



carmin.



lil.



blau—bleu.



br'n.

1904. (Fm. 1875 1885.) O



grau & rot
gris & rouge.



br'n.